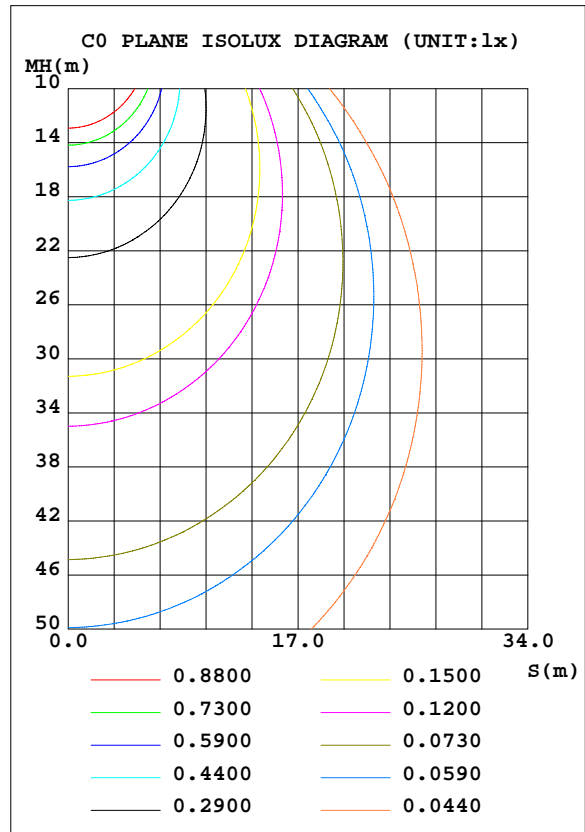
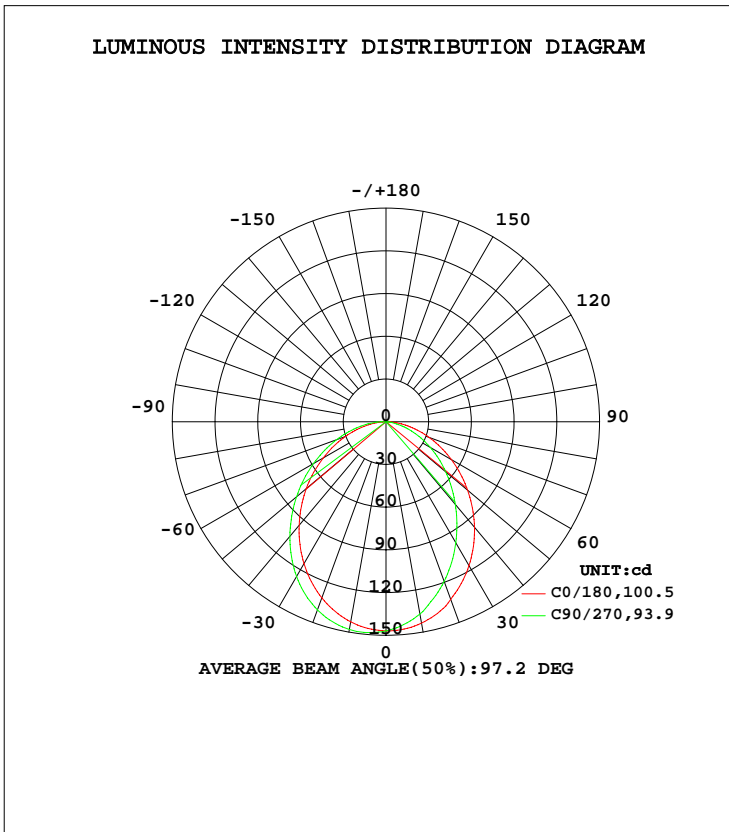


LUMINAIRE PHOTOMETRIC TEST REPORT

Test:U:120.0V I:0.0537A P:6.430W PF:0.9978 Lamp Flux:359.11x1 lm		
NAME: ASD-UCS-12D5CC-XX 2700K	TYPE:N/A	WEIGHT:N/A
SPEC.:N/A	DIM.: N/A	SERIAL No.:N/A
MFR.: ASD Lighting Corp	SUR.:N/A	Shielding Angle:N/A

DATA OF LAMP		PHOTOMETRIC DATA Eff: 55.85 lm/W			
MODEL	ASD-UCS-12D5CC-XX	Imax(cd)	148.7	S/MH(C0/180)	1.19
NOMINAL POWER(W)	5	LOR(%)	100.0	S/MH(C90/270)	1.03
RATED VOLTAGE(V)	120	TOTAL FLUX(lm)	359.11	η UP, DN(C0-180)	0.1,55.4
NOMINAL FLUX(lm)	359.11	CIE CLASS	DIRECT	η UP, DN(C180-360)	0.1,44.5
LAMPS INSIDE	1	η up(%)	0.2	CIBSE SHR NOM	1.25
TEST VOLTAGE(V)	120	η down(%)	99.8	CIBSE SHR MAX	1.30



C Range: 0 - 360DEG
 C Interval: 22.5DEG
 Test Speed: HIGH
 Temperature:25.3DEG
 Operators:David
 Test Date:2017-06-07

γ Range: 0 - 180DEG
 γ Interval: 1.0DEG
 Test System:EVERFINE GO-R5000_V2 SYSTEM V2.0.351
 Humidity:45%
 Test Distance:2.447m [K=1.0000]
 Remarks:

ZONAL FLUX DIAGRAM

ZONAL FLUX DIAGRAM:

γ	C0	C45	C90	C135	C180	C225	C270	C315	γ	Φ zone	Φ total	%lum, lamp
10	142.7	146.5	148.1	147.0	143.6	139.3	137.1	138.8	0- 10	13.83	13.83	3.85,3.85
20	131.7	138.1	140.6	139.0	132.8	124.0	119.4	123.1	10- 20	38.80	52.63	14.7,14.7
30	115.1	123.0	125.6	124.1	116.6	104.7	98.07	103.5	20- 30	56.62	109.2	30.4,30.4
40	94.87	102.9	105.0	104.1	96.68	83.21	75.82	81.95	30- 40	64.84	174.1	48.5,48.5
50	73.06	80.37	82.01	81.47	74.88	61.77	54.81	60.65	40- 50	63.34	237.4	66.1,66.1
60	50.90	57.39	58.79	58.42	52.99	41.66	35.85	40.72	50- 60	53.91	291.3	81.1,81.1
70	30.46	35.79	36.97	36.54	32.27	23.47	19.15	22.73	60- 70	39.02	330.4	92,92
80	12.62	16.71	17.82	17.30	14.11	8.102	5.369	7.543	70- 80	21.93	352.3	98.1,98.1
90	0.0498	1.341	2.230	1.614	0.0601	0.0144	0.0136	0.0155	80- 90	6.237	358.5	99.8,99.8
100	0.0576	0.0687	0.0595	0.0527	0.0167	0.0221	0.0217	0.0234	90-100	0.1115	358.6	99.9,99.9
110	0.0661	0.0754	0.0650	0.0594	0.0301	0.0347	0.0362	0.0382	100-110	0.0491	358.7	99.9,99.9
120	0.0671	0.0758	0.0661	0.0606	0.0512	0.0566	0.0581	0.0587	110-120	0.0589	358.8	99.9,99.9
130	0.0819	0.0879	0.0778	0.0751	0.0720	0.0761	0.0784	0.0807	120-130	0.0627	358.8	99.9,99.9
140	0.1196	0.1225	0.1145	0.1123	0.0930	0.0965	0.0987	0.0984	130-140	0.0711	358.9	99.9,99.9
150	0.1785	0.1827	0.1759	0.1741	0.1130	0.1143	0.1158	0.1155	140-150	0.0792	359.0	100,100
160	0.2208	0.2260	0.2224	0.2184	0.1374	0.1388	0.1394	0.1385	150-160	0.0759	359.0	100,100
170	0.2226	0.2286	0.2251	0.2214	0.1510	0.1526	0.1506	0.1494	160-170	0.0525	359.1	100,100
180	0.1915	0.1951	0.1967	0.1908	0.1903	0.1936	0.1927	0.1904	170-180	0.0180	359.1	100,100
DEG	LUMINOUS INTENSITY:cd Less than 25% Percent = 9.3 %									UNIT:lm		

Conical surface Flux(90deg): 206.5 lm

%lum = 57.5%
 %lamp = 57.5%

Conical surface Flux(120deg): 291.34 lm

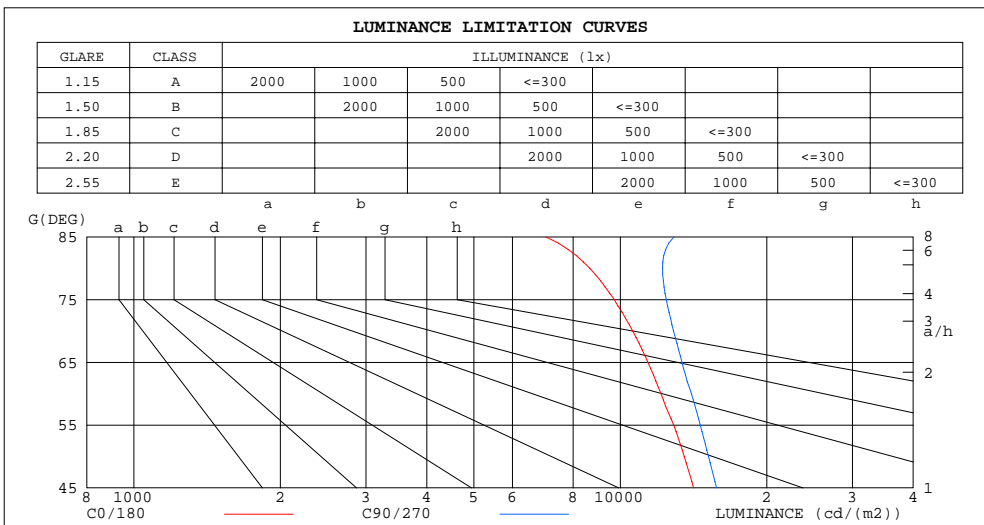
%lum = 81.1%
 %lamp = 81.1%

C Range: 0 - 360DEG
 C Interval: 22.5DEG
 Test Speed: HIGH
 Temperature:25.3DEG
 Operators:David
 Test Date:2017-06-07

γ Range: 0 - 180DEG
 γ Interval: 1.0DEG
 Test System:EVERFINE GO-R5000_V2 SYSTEM V2.0.351
 Humidity:45%
 Test Distance:2.447m [K=1.0000]
 Remarks:

LUMINANCE LIMITATION CURVES

Test:U:120.0V I:0.0537A P:6.430W PF:0.9978 Lamp Flux:359.11x1 lm		
NAME: ASD-UCS-12D5CC-XX 2700K	TYPE:N/A	WEIGHT:N/A
SPEC.:N/A	DIM.: N/A	SERIAL No.:N/A
MFR.: ASD Lighting Corp	SUR.:N/A	Shielding Angle:N/A



LUMINANCE cd/(m2)		
G(DEG)	C0/180	C90/270
85	7021	12894
80	8654	12212
75	9714	12429
70	10602	12866
65	11395	13389
60	12119	13995
55	12872	14592
50	13531	15187
45	14142	15764

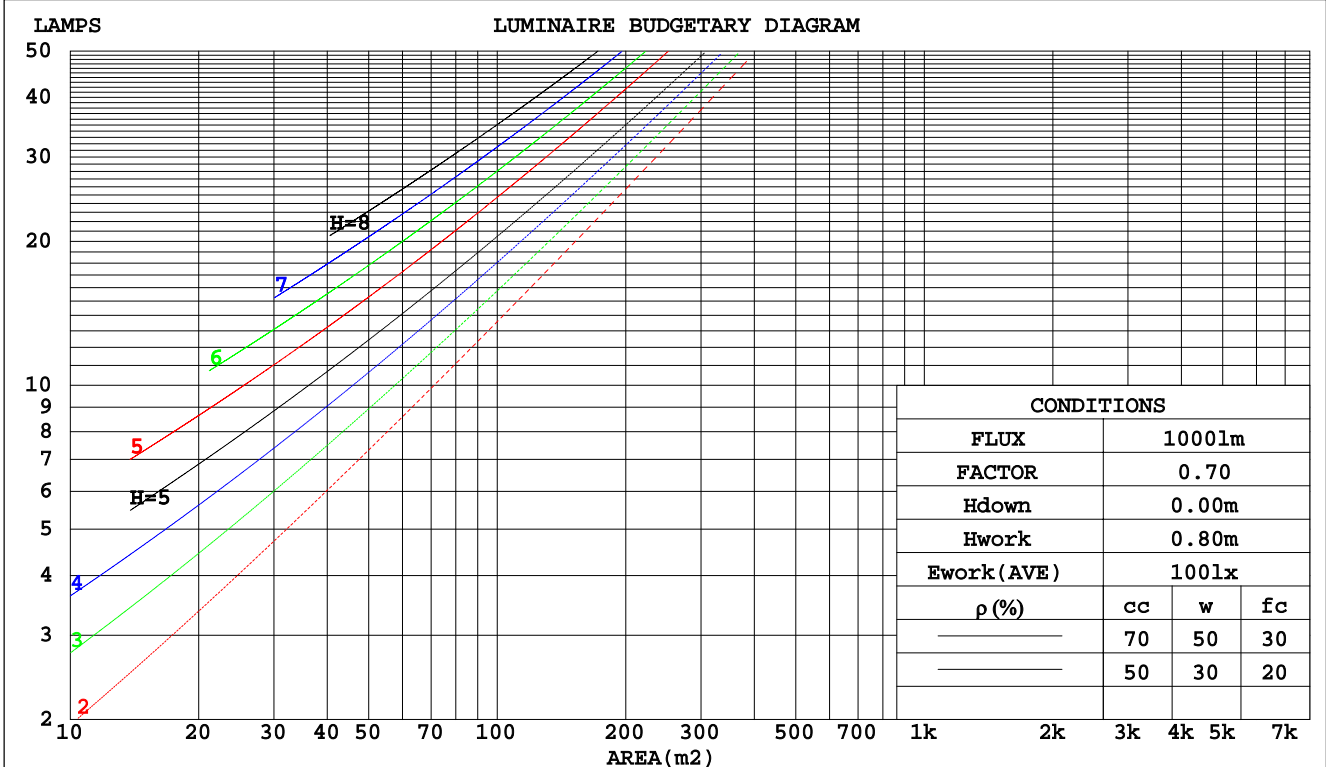
C Range: 0 - 360DEG
 C Interval: 22.5DEG
 Test Speed: HIGH
 Temperature:25.3DEG
 Operators:David
 Test Date:2017-06-07

γ Range: 0 - 180DEG
 γ Interval: 1.0DEG
 Test System:EVERFINE GO-R5000_V2 SYSTEM V2.0.351
 Humidity:45%
 Test Distance:2.447m [K=1.0000]
 Remarks:

CU AND LUMINAIRE BUDGETARY ESTIMATE DIAGRAM

Test:U:120.0V I:0.0537A P:6.430W PF:0.9978 Lamp Flux:359.11x1 lm		
NAME: ASD-UCS-12D5CC-XX 2700K	TYPE:N/A	WEIGHT:N/A
SPEC.:N/A	DIM.: N/A	SERIAL No.:N/A
MFR.: ASD Lighting Corp	SUR.:N/A	Shielding Angle:N/A

pcc	80%			70%			50%			30%			10%			0
	50%	30%	10%	50%	30%	10%	50%	30%	10%	50%	30%	10%	50%	30%	10%	0
pw																0
pfc	20%			20%			20%			20%			20%			0
RCR	RCR:Room Cavity Ratio Coefficients of Utilization(CU)															
0.0	1.19	1.19	1.19	1.16	1.16	1.16	1.11	1.11	1.11	1.06	1.06	1.06	1.02	1.02	1.02	.00
1.0	1.05	1.00	.97	1.02	.98	.95	.98	.95	.92	.94	.92	.89	.90	.88	.87	.84
2.0	.92	.85	.79	.90	.84	.79	.86	.81	.77	.83	.79	.75	.80	.76	.73	.71
3.0	.81	.73	.67	.79	.72	.66	.76	.70	.65	.74	.68	.64	.71	.66	.63	.60
4.0	.72	.63	.57	.71	.63	.57	.68	.61	.56	.66	.60	.55	.64	.58	.54	.52
5.0	.65	.56	.49	.63	.55	.49	.61	.54	.49	.59	.53	.48	.58	.52	.47	.45
6.0	.58	.50	.43	.57	.49	.43	.56	.48	.43	.54	.47	.42	.52	.47	.42	.40
7.0	.53	.45	.38	.52	.44	.38	.51	.43	.38	.49	.43	.38	.48	.42	.37	.36
8.0	.49	.40	.35	.48	.40	.34	.47	.39	.34	.45	.39	.34	.44	.38	.34	.32
9.0	.45	.37	.31	.44	.36	.31	.43	.36	.31	.42	.35	.31	.41	.35	.31	.29
10.0	.41	.34	.28	.41	.33	.28	.40	.33	.28	.39	.33	.28	.38	.32	.28	.26



C Range: 0 - 360DEG
 C Interval: 22.5DEG
 Test Speed: HIGH
 Temperature:25.3DEG
 Operators:David
 Test Date:2017-06-07

γ Range: 0 - 180DEG
 γ Interval: 1.0DEG
 Test System:EVERFINE GO-R5000_V2 SYSTEM V2.0.351
 Humidity:45%
 Test Distance:2.447m [K=1.0000]
 Remarks:

WEC AND CCEC

Test:U:120.0V I:0.0537A P:6.430W PF:0.9978 Lamp Flux:359.11x1 lm		
NAME: ASD-UCS-12D5CC-XX 2700K	TYPE:N/A	WEIGHT:N/A
SPEC.:N/A	DIM.: N/A	SERIAL No.:N/A
MFR.: ASD Lighting Corp	SUR.:N/A	Shielding Angle:N/A

ρcc	80%			70%			50%			30%			10%			0
ρw	50%	30%	10%	50%	30%	10%	50%	30%	10%	50%	30%	10%	50%	30%	10%	0
ρfc	20%			20%			20%			20%			20%			0
RCR	RCR:Room Cavity Ratio						Wall Exitance Coefficients(WEC)									
0.0																
1.0	.297	.169	.053	.290	.165	.053	.277	.159	.051	.264	.152	.049	.253	.147	.047	
2.0	.280	.154	.047	.274	.151	.046	.262	.146	.045	.251	.141	.044	.241	.137	.043	
3.0	.260	.138	.041	.255	.136	.041	.244	.132	.040	.235	.129	.039	.226	.125	.039	
4.0	.241	.125	.037	.236	.123	.036	.227	.120	.036	.218	.117	.035	.210	.114	.035	
5.0	.223	.114	.033	.219	.112	.033	.211	.110	.032	.203	.107	.032	.196	.105	.031	
6.0	.207	.104	.030	.204	.103	.030	.196	.101	.029	.190	.099	.029	.183	.097	.029	
7.0	.193	.096	.027	.190	.095	.027	.184	.093	.027	.178	.091	.026	.172	.089	.026	
8.0	.181	.088	.025	.178	.088	.025	.172	.086	.025	.167	.085	.024	.162	.083	.024	
9.0	.170	.082	.023	.167	.082	.023	.162	.080	.023	.157	.079	.023	.153	.077	.022	
10.0	.160	.077	.021	.158	.076	.021	.153	.075	.021	.149	.074	.021	.144	.073	.021	

ρcc	80%			70%			50%			30%			10%			0
ρw	50%	30%	10%	50%	30%	10%	50%	30%	10%	50%	30%	10%	50%	30%	10%	0
ρfc	20%			20%			20%			20%			20%			0
RCR	RCR:Room Cavity Ratio						Ceiling Cavity Exitance Coefficients(CCEC)									
0.0	.192	.192	.192	.164	.164	.164	.112	.112	.112	.064	.064	.064	.021	.021	.021	
1.0	.181	.157	.137	.155	.135	.118	.106	.093	.081	.061	.054	.047	.019	.017	.015	
2.0	.172	.133	.101	.147	.115	.087	.101	.079	.061	.058	.046	.036	.019	.015	.012	
3.0	.164	.115	.077	.140	.100	.067	.096	.069	.047	.056	.040	.028	.018	.013	.009	
4.0	.156	.102	.061	.134	.088	.053	.092	.061	.037	.053	.036	.022	.017	.012	.007	
5.0	.149	.092	.050	.128	.079	.043	.088	.055	.030	.051	.032	.018	.016	.011	.006	
6.0	.141	.083	.041	.122	.072	.036	.084	.050	.025	.049	.030	.015	.016	.010	.005	
7.0	.135	.076	.035	.116	.066	.031	.080	.046	.022	.046	.027	.013	.015	.009	.004	
8.0	.128	.070	.031	.110	.061	.027	.076	.043	.019	.044	.025	.011	.014	.008	.004	
9.0	.122	.065	.027	.105	.057	.024	.073	.040	.017	.043	.024	.010	.014	.008	.003	
10.0	.117	.061	.024	.101	.053	.021	.070	.037	.015	.041	.022	.009	.013	.007	.003	

C Range: 0 - 360DEG
 C Interval: 22.5DEG
 Test Speed: HIGH
 Temperature:25.3DEG
 Operators:David
 Test Date:2017-06-07

γ Range: 0 - 180DEG
 γ Interval: 1.0DEG
 Test System:EVERFINE GO-R5000_V2 SYSTEM V2.0.351
 Humidity:45%
 Test Distance:2.447m [K=1.0000]
 Remarks:

UGR(Unified Glare Rating) Table

Test:U:120.0V I:0.0537A P:6.430W PF:0.9978 Lamp Flux:359.11x1 lm		
NAME: ASD-UCS-12D5CC-XX 2700K	TYPE:N/A	WEIGHT:N/A
SPEC.:N/A	DIM.: N/A	SERIAL No.:N/A
MFR.: ASD Lighting Corp	SUR.:N/A	Shielding Angle:N/A

ceiling/cavity	0.7	0.7	0.5	0.5	0.3	0.7	0.7	0.5	0.5	0.3
walls	0.5	0.3	0.5	0.3	0.3	0.5	0.3	0.5	0.3	0.3
working plane	0.2	0.2	0.2	0.2	0.2	0.2	0.2	0.2	0.2	0.2
Room dimensions	Viewed crosswise					Viewed endwise				
x = 2H y = 2H	22.0	23.4	22.2	23.6	23.8	22.4	23.9	22.7	24.1	24.3
3H	23.3	24.7	23.6	24.9	25.1	23.9	25.3	24.2	25.5	25.8
4H	23.8	25.1	24.1	25.4	25.6	24.6	25.9	24.9	26.1	26.4
6H	24.2	25.4	24.5	25.7	26.0	25.1	26.3	25.4	26.6	26.9
8H	24.3	25.5	24.7	25.8	26.1	25.3	26.5	25.7	26.8	27.1
12H	24.4	25.5	24.7	25.8	26.1	25.5	26.6	25.8	26.9	27.2
4H 2H	22.6	23.9	22.9	24.2	24.4	23.0	24.3	23.3	24.5	24.8
3H	24.2	25.3	24.5	25.6	25.9	24.7	25.8	25.0	26.1	26.4
4H	24.8	25.9	25.2	26.2	26.5	25.5	26.5	25.9	26.8	27.2
6H	25.4	26.3	25.8	26.6	27.0	26.2	27.1	26.6	27.4	27.8
8H	25.5	26.4	25.9	26.8	27.1	26.4	27.3	26.8	27.7	28.0
12H	25.6	26.4	26.1	26.8	27.2	26.7	27.5	27.1	27.8	28.2
8H 4H	25.2	26.0	25.6	26.4	26.8	25.7	26.6	26.2	27.0	27.4
6H	25.9	26.6	26.3	27.0	27.4	26.6	27.3	27.0	27.7	28.1
8H	26.1	26.8	26.6	27.2	27.7	27.0	27.6	27.4	28.0	28.5
12H	26.3	26.9	26.8	27.3	27.8	27.3	27.9	27.8	28.3	28.8
12H 4H	25.2	26.0	25.7	26.4	26.8	25.8	26.5	26.2	26.9	27.3
6H	26.0	26.6	26.4	27.0	27.5	26.7	27.3	27.1	27.7	28.2
8H	26.3	26.8	26.8	27.3	27.8	27.1	27.6	27.6	28.1	28.6
Variations with the observer position at spacings:										
S = 1.0H	+ 0.2 / - 0.2					+ 0.2 / - 0.2				
1.5H	+ 0.2 / - 0.4					+ 0.2 / - 0.3				
2.0H	+ 0.2 / - 0.4					+ 0.2 / - 0.2				

CIE Pub.117 Corrected 359.1 lm Total Lamp Luminous Flux. (8log(F/F0) = -3.6)

C Range: 0 - 360DEG
 C Interval: 22.5DEG
 Test Speed: HIGH
 Temperature:25.3DEG
 Operators:David
 Test Date:2017-06-07

γ Range: 0 - 180DEG
 γ Interval: 1.0DEG
 Test System:EVERFINE GO-R5000_V2 SYSTEM V2.0.351
 Humidity:45%
 Test Distance:2.447m [K=1.0000]
 Remarks:

UTILIZATION FACTORS TABLE

Test:U:120.0V I:0.0537A P:6.430W PF:0.9978 Lamp Flux:359.11x1 lm		
NAME: ASD-UCS-12D5CC-XX 2700K	TYPE:N/A	WEIGHT:N/A
SPEC.:N/A	DIM.: N/A	SERIAL No.:N/A
MFR.: ASD Lighting Corp	SUR.:N/A	Shielding Angle:N/A

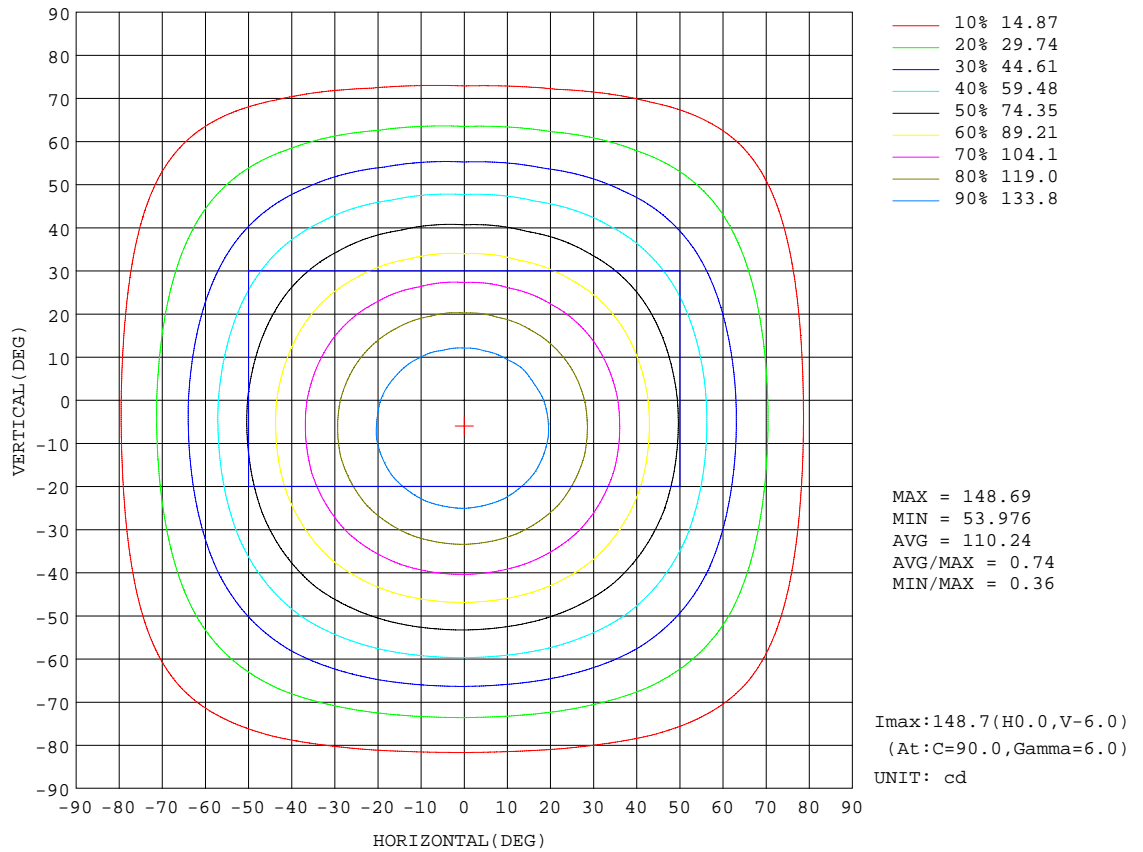
REFLECTANCE										
Ceiling	0.8	0.8	0.8	0.7	0.7	0.7	0.5	0.5	0.5	0
Walls	0.7	0.5	0.3	0.7	0.5	0.3	0.7	0.5	0.3	0
Working plane	0.2	0.2	0.2	0.2	0.2	0.2	0.2	0.2	0.2	0
ROOM INDEX	UTILIZATION FACTORS(PERCENT) $k(RI) \times RCR = 5$									
k = 0.60	60	49	42	59	48	42	58	48	42	35
0.80	70	59	51	69	58	51	67	57	51	44
1.00	78	67	60	77	67	60	75	68	59	53
1.25	85	75	68	83	74	68	81	73	67	60
1.50	90	80	74	88	79	73	85	78	72	65
2.00	96	88	82	94	87	81	91	85	80	72
2.50	100	92	87	98	91	86	94	88	84	76
3.00	103	97	91	101	95	90	97	92	88	80
4.00	107	101	97	105	100	96	100	96	93	84
5.00	109	105	101	107	103	99	102	99	96	87
ROOM INDEX	UF(total)									Direct
According to DIN EN 13032-2 2004			Suspended				SHRNOM = 1.25			

C Range: 0 - 360DEG
 C Interval: 22.5DEG
 Test Speed: HIGH
 Temperature:25.3DEG
 Operators:David
 Test Date:2017-06-07

γ Range: 0 - 180DEG
 γ Interval: 1.0DEG
 Test System:EVERFINE GO-R5000_V2 SYSTEM V2.0.351
 Humidity:45%
 Test Distance:2.447m [K=1.0000]
 Remarks:

ISOCANDELA DIAGRAM

Test:U:120.0V I:0.0537A P:6.430W PF:0.9978 Lamp Flux:359.11x1 lm		
NAME: ASD-UCS-12D5CC-XX 2700K	TYPE:N/A	WEIGHT:N/A
SPEC.:N/A	DIM.: N/A	SERIAL No.:N/A
MFR.: ASD Lighting Corp	SUR.:N/A	Shielding Angle:N/A

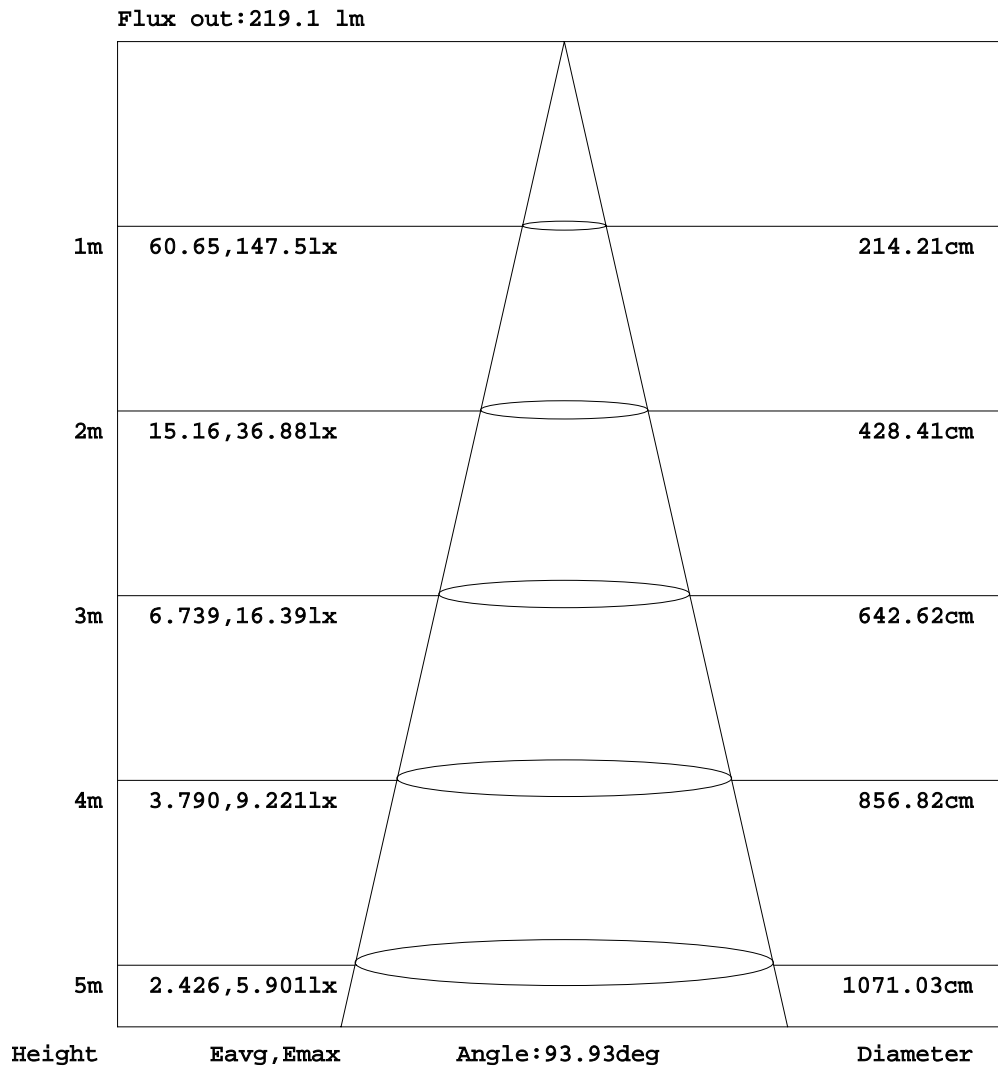


C Range: 0 - 360DEG
 C Interval: 22.5DEG
 Test Speed: HIGH
 Temperature:25.3DEG
 Operators:David
 Test Date:2017-06-07

γ Range: 0 - 180DEG
 γ Interval: 1.0DEG
 Test System:EVERFINE GO-R5000_V2 SYSTEM V2.0.351
 Humidity:45%
 Test Distance:2.447m [K=1.0000]
 Remarks:

AAI Figure

Test:U:120.0V I:0.0537A P:6.430W PF:0.9978 Lamp Flux:359.1lx1 lm		
NAME: ASD-UCS-12D5CC-XX 2700K	TYPE:N/A	WEIGHT:N/A
SPEC.:N/A	DIM.: N/A	SERIAL No.:N/A
MFR.: ASD Lighting Corp	SUR.:N/A	Shielding Angle:N/A



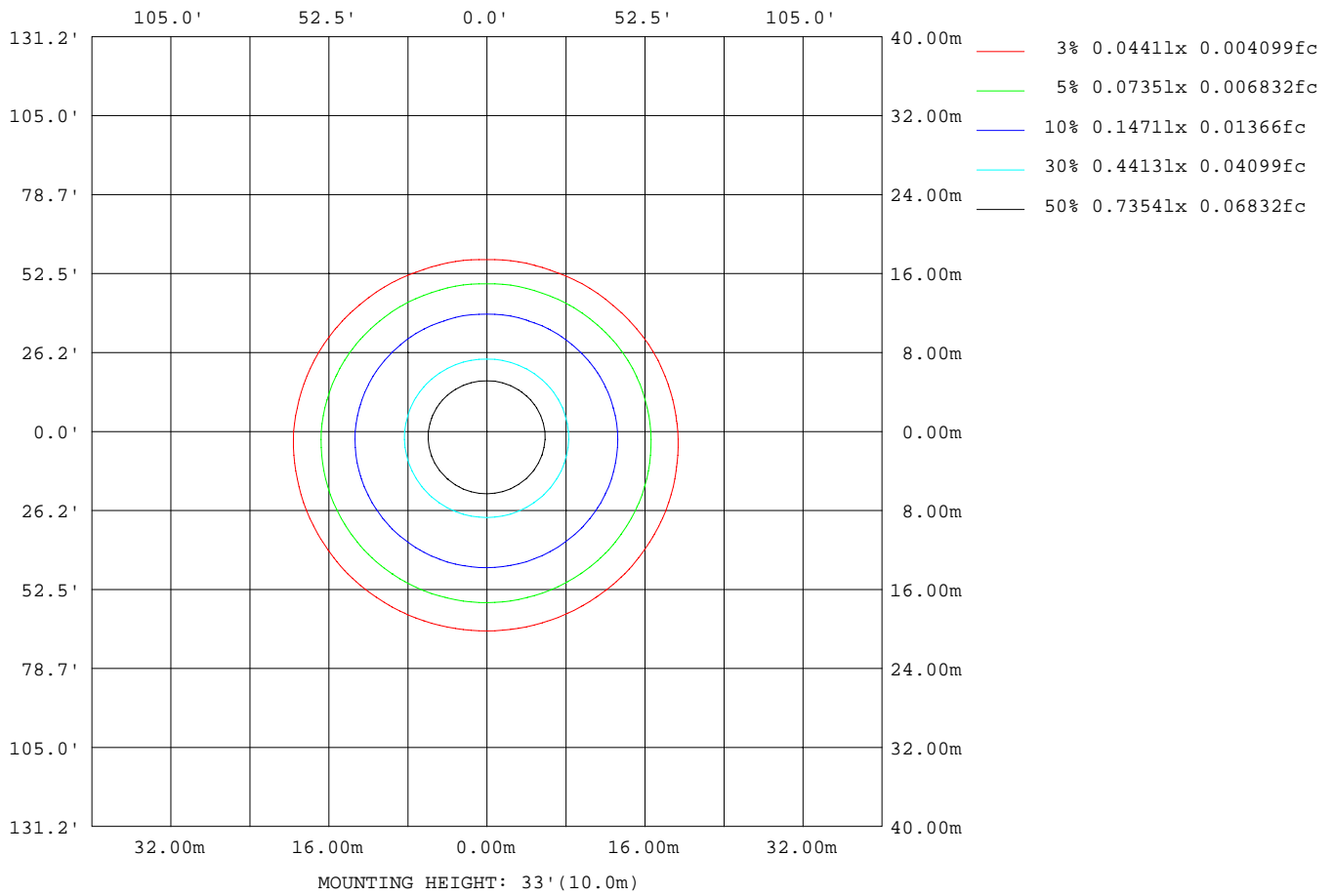
Note:The Curves indicate the illuminated area and the average illumination when the luminaire is at different distance.

C Range: 0 - 360DEG
 C Interval: 22.5DEG
 Test Speed: HIGH
 Temperature:25.3DEG
 Operators:David
 Test Date:2017-06-07

γ Range: 0 - 180DEG
 γ Interval: 1.0DEG
 Test System:EVERFINE GO-R5000_V2 SYSTEM V2.0.351
 Humidity:45%
 Test Distance:2.447m [K=1.0000]
 Remarks:

ISOLUX DIAGRAM

Test:U:120.0V I:0.0537A P:6.430W PF:0.9978 Lamp Flux:359.11x1 lm		
NAME: ASD-UCS-12D5CC-XX 2700K	TYPE:N/A	WEIGHT:N/A
SPEC.:N/A	DIM.: N/A	SERIAL No.:N/A
MFR.: ASD Lighting Corp	SUR.:N/A	Shielding Angle:N/A



C Range: 0 - 360DEG
 C Interval: 22.5DEG
 Test Speed: HIGH
 Temperature:25.3DEG
 Operators:David
 Test Date:2017-06-07

γ Range: 0 - 180DEG
 γ Interval: 1.0DEG
 Test System:EVERFINE GO-R5000_V2 SYSTEM V2.0.351
 Humidity:45%
 Test Distance:2.447m [K=1.0000]
 Remarks:

LED Avg.L Report

Test:U:120.0V I:0.0537A P:6.430W PF:0.9978 Lamp Flux:359.11x1 lm		
NAME: ASD-UCS-12D5CC-XX 2700K	TYPE:N/A	WEIGHT:N/A
SPEC.:N/A	DIM.: N/A	SERIAL No.:N/A
MFR.: ASD Lighting Corp	SUR.:N/A	Shielding Angle:N/A

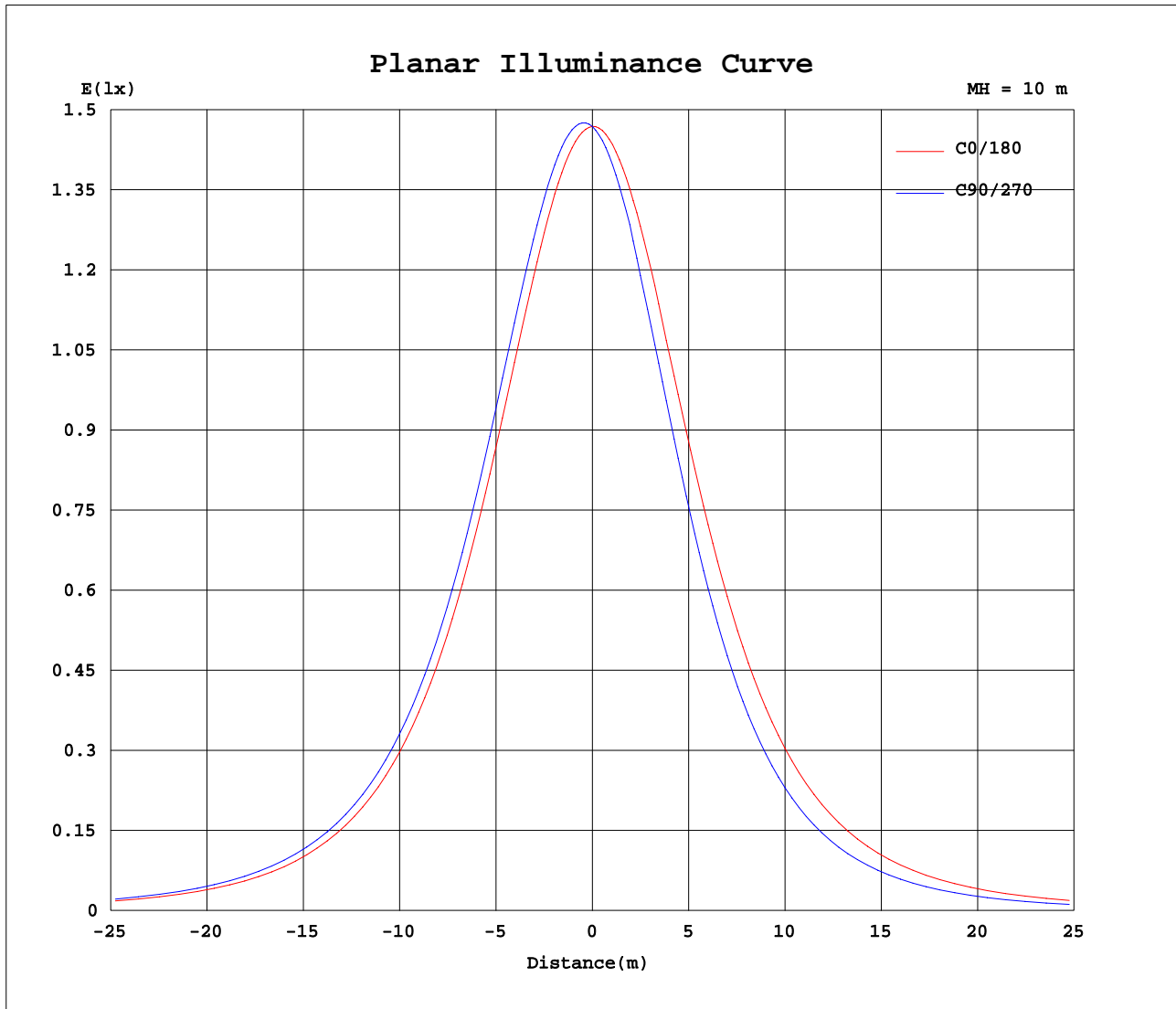
AvgL	cd/m2
L_0~180(65)av	11668
L_0~180(75)av	10095
L_0~180(85)av	7830
L_90~270(65)av	10523
L_90~270(75)av	8940
L_90~270(85)av	7064
L_45(65)av	11067
L_45(75)av	9489
L_45(85)av	7086

Standard: GB/T 29293-2012

C Range: 0 - 360DEG
 C Interval: 22.5DEG
 Test Speed: HIGH
 Temperature:25.3DEG
 Operators:David
 Test Date:2017-06-07

γ Range: 0 - 180DEG
 γ Interval: 1.0DEG
 Test System:EVERFINE GO-R5000_V2 SYSTEM V2.0.351
 Humidity:45%
 Test Distance:2.447m [K=1.0000]
 Remarks:

Planar Illuminance Curve



C Range: 0 - 360DEG
 C Interval: 22.5DEG
 Test Speed: HIGH
 Temperature: 25.3DEG
 Operators: David
 Test Date: 2017-06-07

γ Range: 0 - 180DEG
 γ Interval: 1.0DEG
 Test System: EVERFINE GO-R5000_V2 SYSTEM V2.0.351
 Humidity: 45%
 Test Distance: 2.447m [K=1.0000]
 Remarks:

LUMINOUS DISTRIBUTION INTENSITY DATA

Test:U:120.0V I:0.0537A P:6.430W PF:0.9978 Lamp Flux:359.11x1 lm		
NAME: ASD-UCS-12D5CC-XX 2700K	TYPE:N/A	WEIGHT:N/A
SPEC.:N/A	DIM.: N/A	SERIAL No.:N/A
MFR.: ASD Lighting Corp	SUR.:N/A	Shielding Angle:N/A

Table--1

UNIT: cd

C(DEG) γ (DEG)	0	22.5	45	67.5	90	112.5	135	157.5	180	202.5	225	247.5	270	292.5	315	337.5			
0	147	147	147	147	147	147	147	147	147	147	147	147	147	147	147	147			
5	146	147	148	148	149	148	148	147	146	145	144	143	143	143	144	145			
10	143	145	146	148	148	148	147	145	144	141	139	138	137	138	139	141			
15	138	141	143	145	145	145	144	142	139	136	132	130	129	129	131	135			
20	132	135	138	140	141	140	139	137	133	128	124	121	119	120	123	127			
25	124	128	131	133	134	134	132	130	125	120	115	111	109	110	114	119			
30	115	120	123	125	126	125	124	121	117	111	105	100.0	98.1	99.3	104	109			
35	105	110	113	115	116	116	115	112	107	101	94.0	89.0	86.9	88.3	92.8	99.2			
40	94.9	99.8	103	104	105	105	104	101	96.7	90.2	83.2	77.9	75.8	77.3	82.0	88.7			
45	84.0	88.8	91.8	93.1	93.7	93.7	92.9	90.4	85.9	79.4	72.4	67.1	65.1	66.5	71.2	77.9			
50	73.1	77.7	80.4	81.5	82.0	82.1	81.5	79.2	74.9	68.5	61.8	56.8	54.8	56.2	60.6	67.1			
55	62.0	66.4	68.9	69.9	70.3	70.5	69.9	67.8	63.9	57.9	51.5	46.9	45.1	46.3	50.5	56.5			
60	50.9	55.0	57.4	58.5	58.8	58.9	58.4	56.4	53.0	47.4	41.7	37.5	35.9	37.0	40.7	46.2			
65	40.4	44.2	46.3	47.2	47.5	47.7	47.1	45.3	42.4	37.4	32.3	28.6	27.2	28.2	31.4	36.3			
70	30.5	33.8	35.8	36.6	37.0	37.1	36.5	34.8	32.3	27.9	23.5	20.4	19.2	20.0	22.7	26.9			
75	21.1	24.0	25.9	26.7	27.0	27.1	26.5	25.0	22.8	19.1	15.4	12.9	11.8	12.5	14.7	18.2			
80	12.6	15.1	16.7	17.5	17.8	17.8	17.3	15.9	14.1	11.1	8.10	6.05	5.37	5.81	7.54	10.3			
85	5.14	7.08	8.45	9.18	9.44	9.41	8.95	7.73	6.32	4.00	1.78	1.10	0.90	1.00	1.56	3.43			
90	0.05	0.49	1.34	1.96	2.23	2.11	1.61	0.79	0.06	0.01	0.01	0.01	0.01	0.01	0.02	0.02			
95	0.05	0.06	0.06	0.06	0.06	0.05	0.05	0.05	0.01	0.01	0.02	0.02	0.02	0.02	0.02	0.02			
100	0.06	0.06	0.07	0.07	0.06	0.05	0.05	0.06	0.02	0.02	0.02	0.02	0.02	0.02	0.02	0.03			
105	0.06	0.07	0.07	0.07	0.06	0.06	0.06	0.06	0.02	0.03	0.03	0.03	0.03	0.03	0.03	0.03			
110	0.07	0.07	0.08	0.07	0.06	0.06	0.06	0.06	0.03	0.03	0.03	0.04	0.04	0.04	0.04	0.06			
115	0.07	0.07	0.08	0.08	0.06	0.06	0.06	0.07	0.04	0.04	0.04	0.05	0.05	0.05	0.05	0.07			
120	0.07	0.07	0.08	0.08	0.07	0.06	0.06	0.07	0.05	0.05	0.06	0.06	0.06	0.06	0.06	0.07			
125	0.07	0.08	0.08	0.08	0.07	0.06	0.06	0.07	0.06	0.06	0.07	0.07	0.07	0.07	0.07	0.07			
130	0.08	0.08	0.09	0.08	0.08	0.07	0.08	0.08	0.07	0.07	0.08	0.08	0.08	0.08	0.08	0.08			
135	0.10	0.10	0.10	0.10	0.09	0.09	0.09	0.09	0.08	0.08	0.09	0.09	0.09	0.09	0.09	0.09			
140	0.12	0.12	0.12	0.12	0.11	0.11	0.11	0.12	0.09	0.09	0.10	0.10	0.10	0.10	0.10	0.10			
145	0.15	0.15	0.15	0.15	0.15	0.14	0.14	0.15	0.10	0.10	0.11	0.11	0.11	0.11	0.11	0.11			
150	0.18	0.18	0.18	0.18	0.18	0.17	0.17	0.18	0.11	0.11	0.11	0.12	0.12	0.12	0.12	0.12			
155	0.20	0.20	0.21	0.20	0.20	0.20	0.20	0.20	0.13	0.13	0.13	0.13	0.13	0.13	0.13	0.13			
160	0.22	0.22	0.23	0.22	0.22	0.22	0.22	0.22	0.14	0.14	0.14	0.14	0.14	0.14	0.14	0.14			
165	0.23	0.23	0.23	0.23	0.23	0.22	0.22	0.22	0.14	0.15	0.15	0.15	0.15	0.15	0.15	0.15			
170	0.22	0.22	0.23	0.23	0.23	0.22	0.22	0.22	0.15	0.15	0.15	0.15	0.15	0.15	0.15	0.15			
175	0.21	0.21	0.21	0.21	0.21	0.21	0.21	0.21	0.17	0.17	0.17	0.17	0.17	0.17	0.17	0.17			
180	0.19	0.19	0.20	0.19	0.20	0.19	0.19	0.19	0.19	0.19	0.19	0.19	0.19	0.19	0.19	0.19			

C Range: 0 - 360DEG
 C Interval: 22.5DEG
 Test Speed: HIGH
 Temperature:25.3DEG
 Operators:David
 Test Date:2017-06-07

γ Range: 0 - 180DEG
 γ Interval: 1.0DEG
 Test System:EVERFINE GO-R5000_V2 SYSTEM V2.0.351
 Humidity:45%
 Test Distance:2.447m [K=1.0000]
 Remarks: