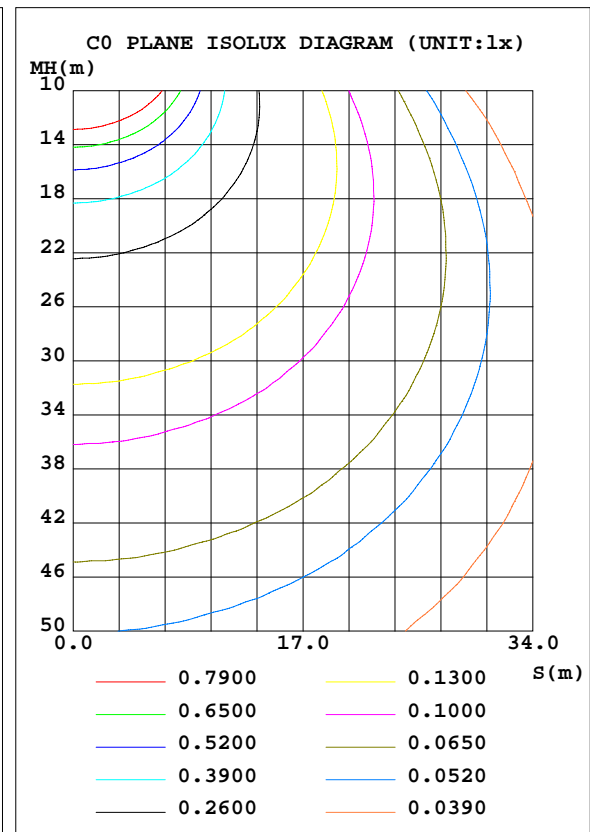
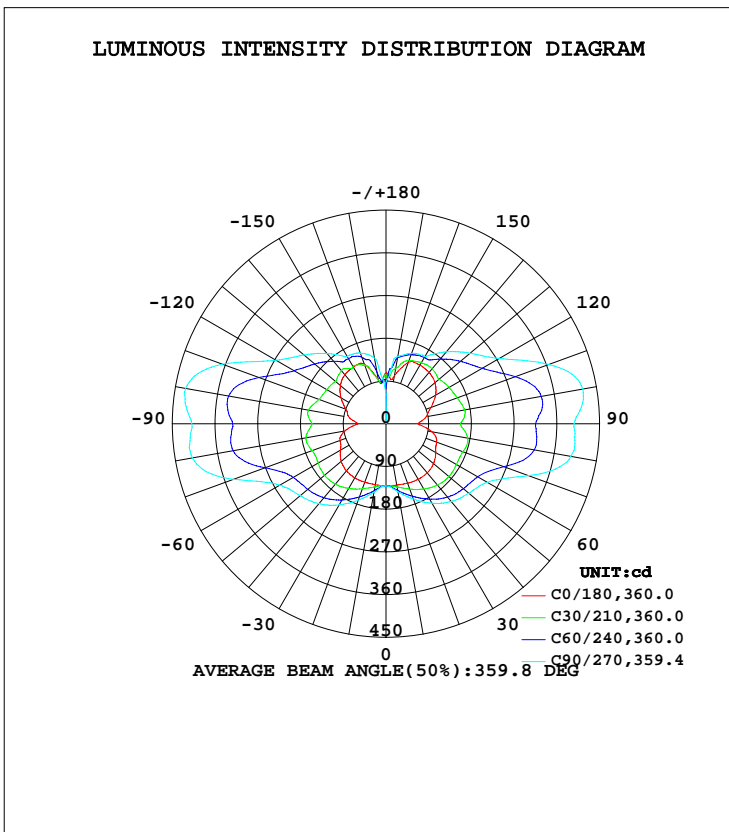


LUMINAIRE PHOTOMETRIC TEST REPORT

Test:U:277.00V I:0.1196A P:29.910W PF:0.9029 Freq:60.00Hz Lamp Flux:2514.84x1 lm		
NAME:	TYPE:LED	WEIGHT:
SPEC.:	DIM.:	SERIAL No.:
MFR.: ASD Lighting corp	SUR.:	Shielding Angle:

DATA OF LAMP		PHOTOMETRIC DATA Eff: 84.08 lm/W			
MODEL	SD-LWS27-MV-36D30CC-BK	I <sub>max</sub> (cd)	429.6	S/MH(C0/180)	1.53
NOMINAL POWER(W)	30	LOR(%)	100.0	S/MH(C90/270)	2.32
RATED VOLTAGE(V)	120-277	TOTAL FLUX(lm)	2514.8	η UP, DN(C0-180)	24.7,25.1
NOMINAL FLUX(lm)	2514.84	CIE CLASS	DIFFUSE	η UP, DN(C180-360)	24.6,25.7
LAMPS INSIDE	1	η up(%)	49.2	CIBSE SHR NOM	2.00
TEST VOLTAGE(V)	277	η down(%)	50.8	CIBSE SHR MAX	2.00



C Range: 0 - 360DEG  
 C Interval: 15.0DEG  
 Test Speed: HIGH  
 Temperature: 25.0DEG  
 Operators: Alan Wang  
 Test Date: 08 May 2023

γ Range: 0 - 180DEG  
 γ Interval: 1.0DEG  
 Test System: EVERFINE GO-R5000\_V2 SYSTEM V2.00.416  
 Humidity: 43.5%  
 Test Distance: 2.500m [K=1.0390]  
 Remarks:

## ZONAL FLUX DIAGRAM

## ZONAL FLUX DIAGRAM:

$\gamma$	C0	C45	C90	C135	C180	C225	C270	C315	$\gamma$	$\Phi$ zone	$\Phi$ total	%lum,lamp
10	131.4	139.4	145.6	139.3	130.6	139.5	146.4	139.6	0- 10	12.88	12.88	0.51,0.51
20	133.3	156.1	168.9	154.5	131.3	156.0	171.8	157.0	10- 20	41.58	54.46	2.17,2.17
30	135.3	172.7	193.2	170.7	131.7	172.9	197.5	175.3	20- 30	74.95	129.4	5.15,5.15
40	135.2	188.0	213.9	183.9	129.7	187.1	219.6	191.3	30- 40	110.7	240.1	9.55,9.55
50	130.9	196.0	228.0	190.7	123.0	194.7	236.0	200.4	40- 50	144.0	384.1	15.3,15.3
60	121.2	199.3	247.2	193.3	110.8	197.0	258.8	205.6	50- 60	171.1	555.2	22.1,22.1
70	113.3	216.6	319.4	210.4	103.5	214.2	342.3	225.8	60- 70	202.4	757.7	30.1,30.1
80	98.31	242.5	395.5	239.2	87.93	245.7	414.1	251.5	70- 80	252.7	1010	40.2,40.2
90	67.60	233.2	396.2	231.1	59.42	237.7	409.0	240.0	80- 90	266.4	1277	50.8,50.8
100	86.14	245.7	421.6	243.3	78.76	246.9	428.8	250.0	90-100	269.3	1546	61.5,61.5
110	101.0	220.7	365.1	213.3	90.11	212.6	367.0	219.3	100-110	255.0	1801	71.6,71.6
120	120.8	194.1	275.5	187.4	109.5	183.5	268.2	190.6	110-120	203.2	2004	79.7,79.7
130	134.8	177.5	231.1	171.7	125.4	169.1	225.6	174.3	120-130	163.2	2168	86.2,86.2
140	141.5	158.4	197.6	153.9	135.0	152.1	193.1	157.6	130-140	130.8	2298	91.4,91.4
150	142.9	157.6	164.1	154.6	137.5	153.6	164.1	158.8	140-150	98.28	2397	95.3,95.3
160	137.4	149.7	157.8	148.0	133.8	141.9	158.3	152.7	150-160	69.29	2466	98.1,98.1
170	102.5	131.7	143.8	110.2	94.05	96.29	140.6	141.7	160-170	38.68	2505	99.6,99.6
180	108.3	98.74	87.85	94.36	106.5	100.5	59.88	90.63	170-180	10.26	2515	100,100
DEG	LUMINOUS INTENSITY:cd									UNIT:lm		

Conical surface Flux(90deg): 308.32 lm

%lum = 12.3%

%lamp = 12.3%

Conical surface Flux(120deg): 555.24 lm

%lum = 22.1%

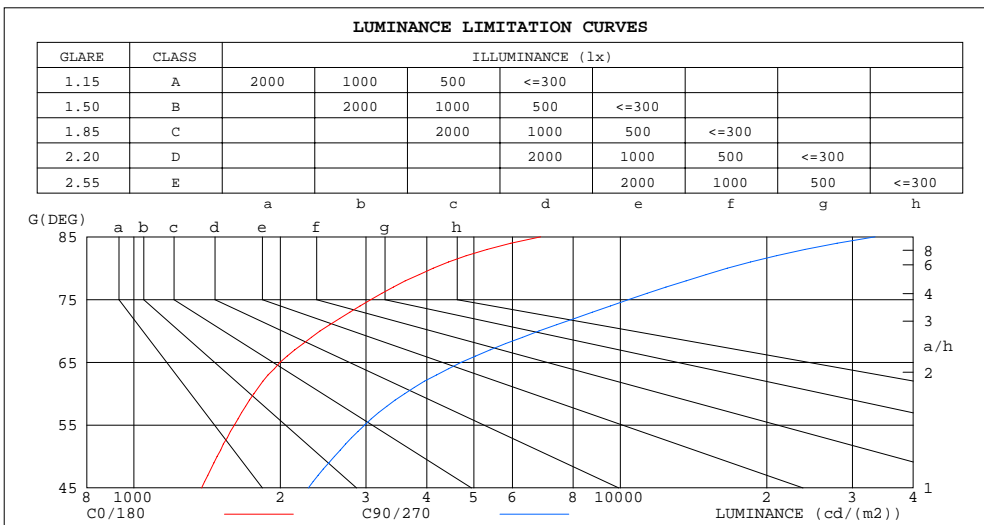
%lamp = 22.1%

C Range: 0 - 360DEG  
 C Interval: 15.0DEG  
 Test Speed: HIGH  
 Temperature: 25.0DEG  
 Operators: Alan Wang  
 Test Date: 08 May 2023

$\gamma$  Range: 0 - 180DEG  
 $\gamma$  Interval: 1.0DEG  
 Test System: EVERFINE GO-R5000\_V2 SYSTEM V2.00.416  
 Humidity: 43.5%  
 Test Distance: 2.500m [K=1.0390]  
 Remarks:

LUMINANCE LIMITATION CURVES

Test:U:277.00V I:0.1196A P:29.910W PF:0.9029 Freq:60.00Hz Lamp Flux:2514.84x1 lm		
NAME:	TYPE:LED	WEIGHT:
SPEC.:	DIM.:	SERIAL No.:
MFR.: ASD Lighting corp	SUR.:	Shielding Angle:



LUMINANCE cd/(m2)		
G(DEG)	C0/180	C90/270
85	6855	33380
80	4125	16593
75	3071	10403
70	2415	6803
65	1997	4710
60	1766	3603
55	1609	2982
50	1483	2584
45	1378	2283

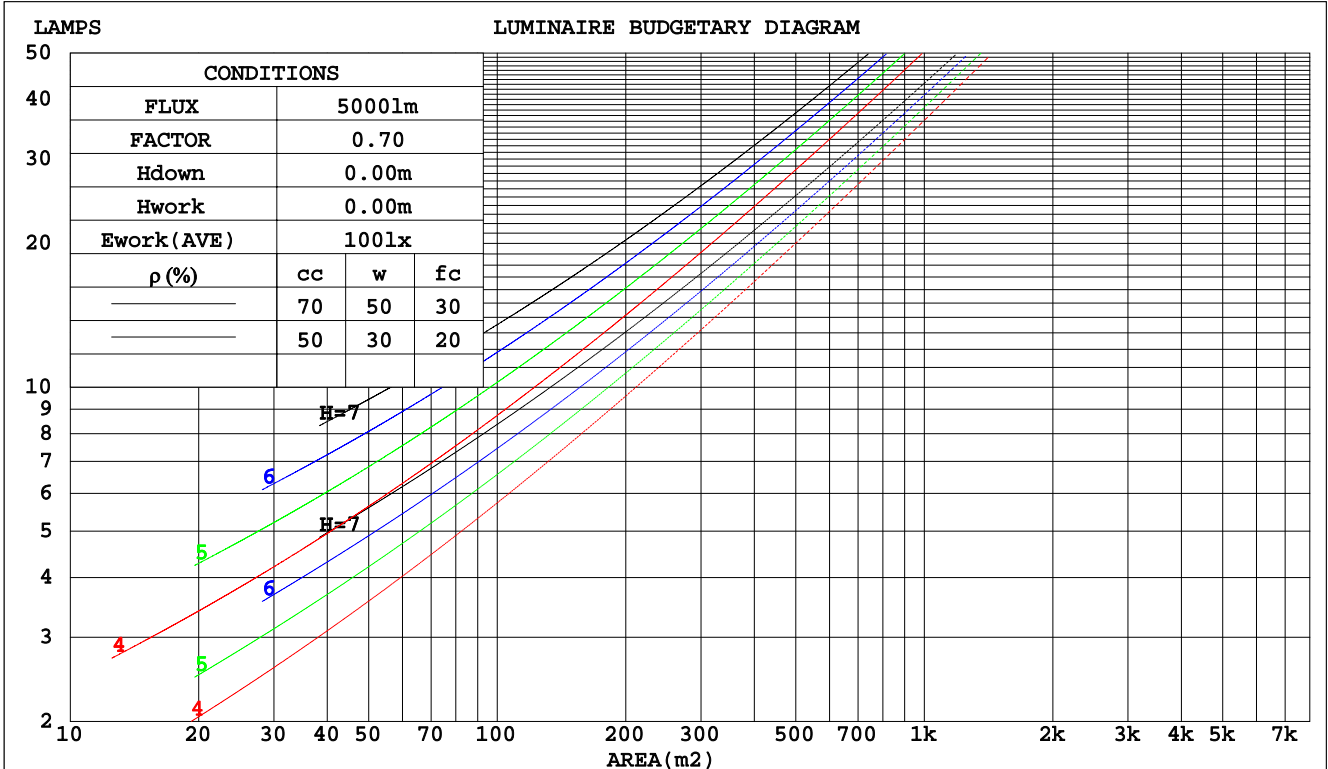
C Range: 0 - 360DEG  
 C Interval: 15.0DEG  
 Test Speed: HIGH  
 Temperature: 25.0DEG  
 Operators: Alan Wang  
 Test Date: 08 May 2023

$\gamma$  Range: 0 - 180DEG  
 $\gamma$  Interval: 1.0DEG  
 Test System: EVERFINE GO-R5000\_V2 SYSTEM V2.00.416  
 Humidity: 43.5%  
 Test Distance: 2.500m [K=1.0390]  
 Remarks:

CU AND LUMINAIRE BUDGETARY ESTIMATE DIAGRAM

Test:U:277.00V I:0.1196A P:29.910W PF:0.9029 Freq:60.00Hz Lamp Flux:2514.84x1 lm		
NAME:	TYPE:LED	WEIGHT:
SPEC.:	DIM.:	SERIAL No.:
MFR.: ASD Lighting corp	SUR.:	Shielding Angle:

pcc	80%			70%			50%			30%			10%			0
	50%	30%	10%	50%	30%	10%	50%	30%	10%	50%	30%	10%	50%	30%	10%	0
pw																
pfc	20%			20%			20%			20%			20%			0
RCR	RCR:Room Cavity Ratio						Coefficients of Utilization(CU)									
0.0	1.07	1.07	1.07	.99	.99	.99	.84	.84	.84	.70	.70	.70	.57	.57	.57	.51
1.0	.86	.80	.75	.79	.74	.69	.66	.62	.58	.53	.50	.47	.42	.40	.38	.32
2.0	.73	.64	.57	.66	.59	.53	.55	.49	.44	.44	.40	.36	.34	.31	.28	.23
3.0	.62	.53	.46	.57	.49	.42	.47	.40	.35	.37	.33	.28	.29	.25	.22	.17
4.0	.54	.45	.37	.50	.41	.34	.41	.34	.29	.33	.27	.23	.25	.21	.18	.14
5.0	.48	.38	.31	.44	.35	.29	.36	.29	.24	.29	.23	.19	.22	.18	.15	.11
6.0	.42	.33	.26	.39	.30	.24	.32	.25	.20	.26	.20	.16	.20	.16	.12	.09
7.0	.38	.29	.23	.35	.27	.21	.29	.22	.18	.23	.18	.14	.18	.14	.11	.08
8.0	.34	.26	.20	.31	.24	.18	.26	.20	.15	.21	.16	.12	.16	.12	.09	.07
9.0	.31	.23	.17	.29	.21	.16	.24	.18	.13	.19	.14	.11	.15	.11	.08	.06
10.0	.28	.21	.15	.26	.19	.14	.22	.16	.12	.18	.13	.10	.14	.10	.07	.05



C Range: 0 - 360DEG  
 C Interval: 15.0DEG  
 Test Speed: HIGH  
 Temperature: 25.0DEG  
 Operators: Alan Wang  
 Test Date: 08 May 2023

γ Range: 0 - 180DEG  
 γ Interval: 1.0DEG  
 Test System: EVERFINE GO-R5000\_V2 SYSTEM V2.00.416  
 Humidity: 43.5%  
 Test Distance: 2.500m [K=1.0390]  
 Remarks:

WEC AND CCEC

Test:U:277.00V I:0.1196A P:29.910W PF:0.9029 Freq:60.00Hz Lamp Flux:2514.84x1 lm		
NAME:	TYPE:LED	WEIGHT:
SPEC.:	DIM.:	SERIAL No.:
MFR.: ASD Lighting corp	SUR.:	Shielding Angle:

ρcc	80%			70%			50%			30%			10%			0
ρw	50%	30%	10%	50%	30%	10%	50%	30%	10%	50%	30%	10%	50%	30%	10%	0
ρfc	20%			20%			20%			20%			20%			0
RCR	RCR:Room Cavity Ratio						Wall Exitance Coefficients(WEC)									
0.0																
1.0	.424	.241	.076	.401	.229	.073	.360	.206	.066	.321	.185	.059	.286	.166	.053	
2.0	.350	.192	.059	.329	.181	.056	.291	.162	.050	.256	.144	.045	.224	.127	.040	
3.0	.303	.161	.048	.285	.152	.046	.250	.135	.041	.218	.119	.037	.188	.104	.032	
4.0	.269	.140	.041	.252	.132	.039	.220	.117	.035	.190	.102	.031	.163	.088	.027	
5.0	.242	.123	.036	.226	.116	.034	.197	.103	.030	.170	.089	.027	.144	.077	.023	
6.0	.220	.110	.032	.206	.104	.030	.179	.092	.027	.153	.080	.023	.130	.068	.020	
7.0	.202	.100	.028	.189	.094	.027	.164	.083	.024	.140	.072	.021	.118	.061	.018	
8.0	.186	.091	.026	.174	.086	.024	.151	.075	.022	.129	.065	.019	.108	.056	.016	
9.0	.173	.084	.023	.162	.079	.022	.140	.069	.020	.120	.060	.017	.100	.051	.015	
10.0	.162	.077	.022	.151	.073	.020	.131	.064	.018	.112	.055	.016	.094	.047	.013	

ρcc	80%			70%			50%			30%			10%			0
ρw	50%	30%	10%	50%	30%	10%	50%	30%	10%	50%	30%	10%	50%	30%	10%	0
ρfc	20%			20%			20%			20%			20%			0
RCR	RCR:Room Cavity Ratio						Ceiling Cavity Exitance Coefficients(CCEC)									
0.0	.566	.566	.566	.483	.483	.483	.330	.330	.330	.190	.190	.190	.061	.061	.061	
1.0	.566	.533	.504	.485	.458	.433	.331	.315	.300	.191	.182	.174	.061	.059	.056	
2.0	.561	.512	.472	.480	.441	.408	.329	.305	.284	.190	.177	.167	.061	.057	.054	
3.0	.554	.497	.452	.475	.429	.392	.326	.298	.275	.188	.174	.162	.060	.057	.053	
4.0	.546	.486	.440	.469	.420	.382	.322	.293	.269	.186	.171	.159	.060	.056	.052	
5.0	.539	.477	.431	.463	.413	.375	.319	.288	.265	.185	.169	.157	.059	.055	.052	
6.0	.531	.470	.425	.457	.407	.370	.315	.285	.262	.183	.167	.156	.059	.055	.051	
7.0	.524	.463	.421	.451	.402	.367	.312	.282	.260	.181	.166	.155	.059	.054	.051	
8.0	.518	.458	.417	.446	.398	.364	.308	.279	.258	.179	.165	.154	.058	.054	.051	
9.0	.512	.454	.415	.441	.394	.362	.305	.277	.257	.178	.164	.153	.058	.054	.051	
10.0	.506	.450	.413	.436	.391	.360	.303	.275	.256	.177	.163	.153	.057	.053	.051	

C Range: 0 - 360DEG  
 C Interval: 15.0DEG  
 Test Speed: HIGH  
 Temperature: 25.0DEG  
 Operators: Alan Wang  
 Test Date: 08 May 2023

γ Range: 0 - 180DEG  
 γ Interval: 1.0DEG  
 Test System: EVERFINE GO-R5000\_V2 SYSTEM V2.00.416  
 Humidity: 43.5%  
 Test Distance: 2.500m [K=1.0390]  
 Remarks:

UGR(Unified Glare Rating) Table

Test:U:277.00V I:0.1196A P:29.910W PF:0.9029 Freq:60.00Hz Lamp Flux:2514.84x1 lm										
NAME:			TYPE:LED				WEIGHT:			
SPEC.:			DIM.:				SERIAL No.:			
MFR.: ASD Lighting corp			SUR.:				Shielding Angle:			
ceiling/cavity	0.7	0.7	0.5	0.5	0.3	0.7	0.7	0.5	0.5	0.3
walls	0.5	0.3	0.5	0.3	0.3	0.5	0.3	0.5	0.3	0.3
working plane	0.2	0.2	0.2	0.2	0.2	0.2	0.2	0.2	0.2	0.2
Room dimensions	Viewed crosswise					Viewed endwise				
x = 2H y = 2H	10.9	12.0	11.8	12.9	14.0	13.9	15.0	14.7	15.9	17.0
3H	13.5	14.5	14.4	15.4	16.6	18.2	19.2	19.1	20.1	21.3
4H	15.0	15.9	15.9	16.9	18.0	20.8	21.8	21.7	22.7	23.9
6H	16.5	17.4	17.4	18.3	19.5	23.6	24.5	24.5	25.4	26.7
8H	17.3	18.1	18.2	19.1	20.3	25.0	25.9	25.9	26.8	28.1
12H	18.1	18.9	19.0	19.8	21.1	26.5	27.4	27.5	28.3	29.6
4H 2H	12.7	13.6	13.6	14.6	15.8	14.6	15.6	15.5	16.5	17.7
3H	15.4	16.3	16.4	17.2	18.5	19.1	19.9	20.0	20.9	22.1
4H	17.0	17.8	17.9	18.7	20.0	21.9	22.6	22.8	23.6	24.9
6H	18.6	19.3	19.5	20.2	21.5	24.9	25.5	25.8	26.5	27.8
8H	19.4	20.0	20.3	21.0	22.3	26.4	27.0	27.4	28.0	29.3
12H	20.2	20.8	21.2	21.8	23.1	28.0	28.6	29.0	29.6	30.9
8H 4H	18.8	19.4	19.7	20.4	21.7	22.3	22.9	23.3	23.9	25.2
6H	20.6	21.1	21.6	22.1	23.4	25.5	26.1	26.5	27.1	28.4
8H	21.5	22.0	22.5	23.0	24.3	27.3	27.8	28.3	28.8	30.1
12H	22.4	22.8	23.4	23.9	25.2	29.2	29.7	30.2	30.7	32.0
12H 4H	19.5	20.1	20.5	21.1	22.4	22.3	22.9	23.3	23.9	25.2
6H	21.5	22.0	22.5	23.0	24.3	25.7	26.2	26.7	27.2	28.5
8H	22.5	23.0	23.6	24.0	25.3	27.5	28.0	28.5	29.0	30.3
Variations with the observer position at spacings:										
S = 1.0H	+ 0.1 / - 0.1					+ 0.1 / - 0.1				
1.5H	+ 0.2 / - 0.2					+ 0.2 / - 0.3				
2.0H	+ 0.3 / - 0.4					+ 0.3 / - 0.4				

CIE Pub.117, 2515 lm Total Lamp Luminous Flux Corrected (8log(F/F0) = 3.2)  
 Area: 0.13725 m2

C Range: 0 - 360DEG  
 C Interval: 15.0DEG  
 Test Speed: HIGH  
 Temperature: 25.0DEG  
 Operators: Alan Wang  
 Test Date: 08 May 2023

γ Range: 0 - 180DEG  
 γ Interval: 1.0DEG  
 Test System: EVERFINE GO-R5000\_V2 SYSTEM V2.00.416  
 Humidity: 43.5%  
 Test Distance: 2.500m [K=1.0390]  
 Remarks:

UTILIZATION FACTORS TABLE

Test:U:277.00V I:0.1196A P:29.910W PF:0.9029 Freq:60.00Hz Lamp Flux:2514.84x1 lm		
NAME:	TYPE:LED	WEIGHT:
SPEC.:	DIM.:	SERIAL No.:
MFR.: ASD Lighting corp	SUR.:	Shielding Angle:

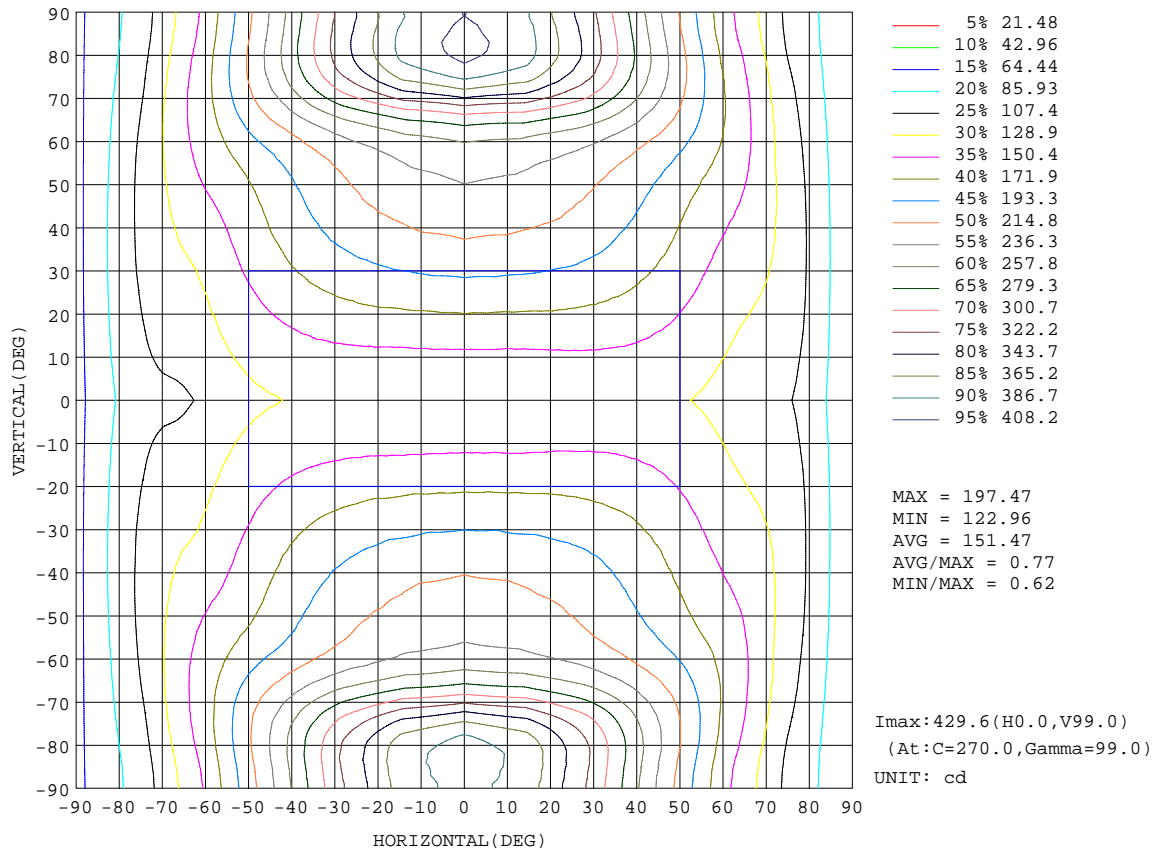
REFLECTANCE										
Ceiling	0.8	0.8	0.8	0.7	0.7	0.7	0.5	0.5	0.5	0
Walls	0.7	0.5	0.3	0.7	0.5	0.3	0.7	0.5	0.3	0
Working plane	0.2	0.2	0.2	0.2	0.2	0.2	0.2	0.2	0.2	0
ROOM INDEX	UTILIZATION FACTORS(PERCENT) k(RI) x RCR = 5									
k = 0.60	36	23	16	34	22	15	30	20	14	7
0.80	44	30	22	41	29	21	37	26	19	9
1.00	51	37	28	48	35	26	42	33	24	12
1.25	58	44	34	54	41	32	47	36	29	15
1.50	63	49	39	59	46	37	50	40	33	17
2.00	71	58	48	66	54	45	56	47	39	21
2.50	76	64	54	70	59	51	60	51	44	24
3.00	80	69	60	74	64	56	62	55	48	27
4.00	85	75	67	79	70	63	66	60	54	30
5.00	89	80	73	82	74	68	69	63	58	33
ROOM INDEX	UF(total)									Direct
According to DIN EN 13032-2 2004			Suspended				SHRNOM = 1.25			

C Range: 0 - 360DEG  
 C Interval: 15.0DEG  
 Test Speed: HIGH  
 Temperature: 25.0DEG  
 Operators: Alan Wang  
 Test Date: 08 May 2023

γ Range: 0 - 180DEG  
 γ Interval: 1.0DEG  
 Test System: EVERFINE GO-R5000\_V2 SYSTEM V2.00.416  
 Humidity: 43.5%  
 Test Distance: 2.500m [K=1.0390]  
 Remarks:

ISOCANDELA DIAGRAM

Test:U:277.00V I:0.1196A P:29.910W PF:0.9029 Freq:60.00Hz Lamp Flux:2514.84x1 lm		
NAME:	TYPE:LED	WEIGHT:
SPEC.:	DIM.:	SERIAL No.:
MFR.: ASD Lighting corp	SUR.:	Shielding Angle:



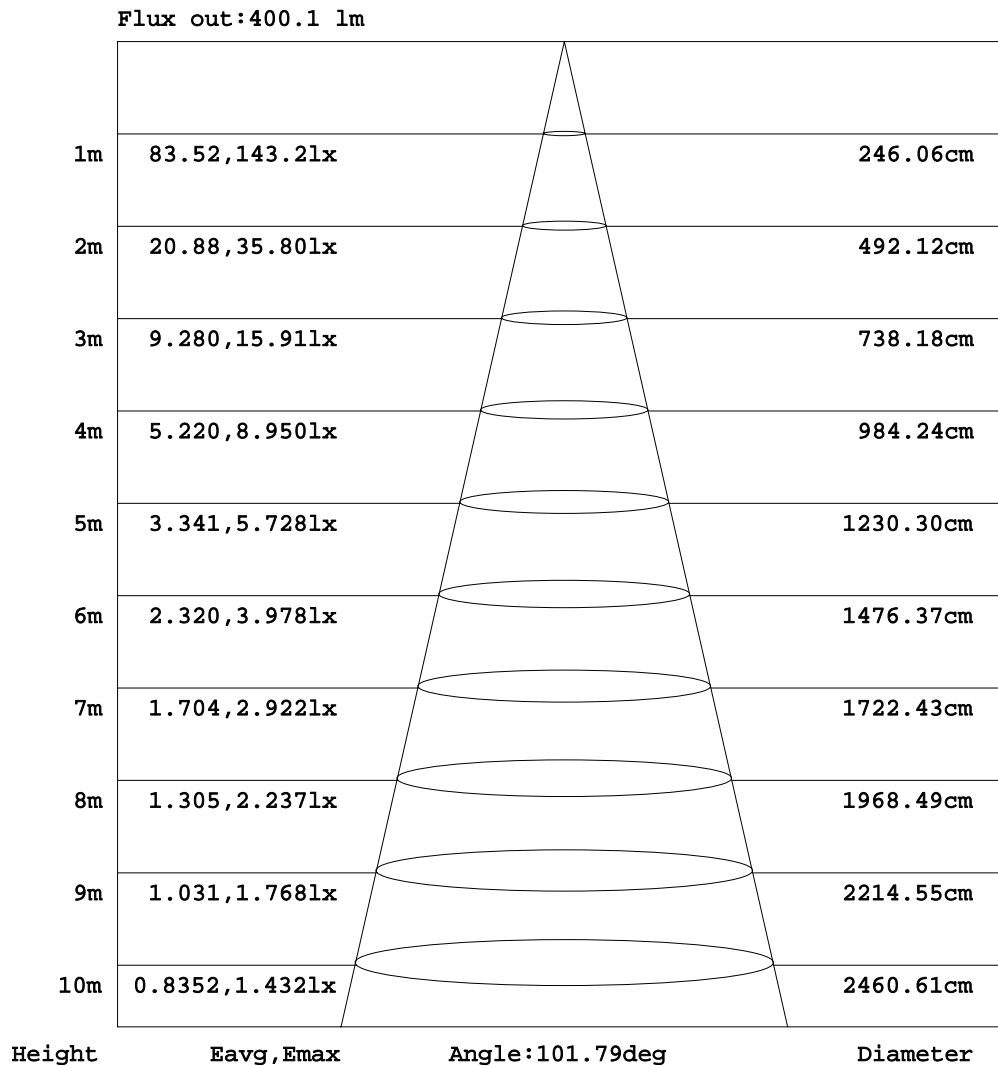
C Range: 0 - 360DEG  
 C Interval: 15.0DEG  
 Test Speed: HIGH  
 Temperature: 25.0DEG  
 Operators: Alan Wang  
 Test Date: 08 May 2023

γ Range: 0 - 180DEG  
 γ Interval: 1.0DEG  
 Test System: EVERFINE GO-R5000\_V2 SYSTEM V2.00.416  
 Humidity: 43.5%  
 Test Distance: 2.500m [K=1.0390]  
 Remarks:



AAI Figure

Test:U:277.00V I:0.1196A P:29.910W PF:0.9029 Freq:60.00Hz Lamp Flux:2514.84x1 lm		
NAME:	TYPE:LED	WEIGHT:
SPEC.:	DIM.:	SERIAL No.:
MFR.: ASD Lighting corp	SUR.:	Shielding Angle:



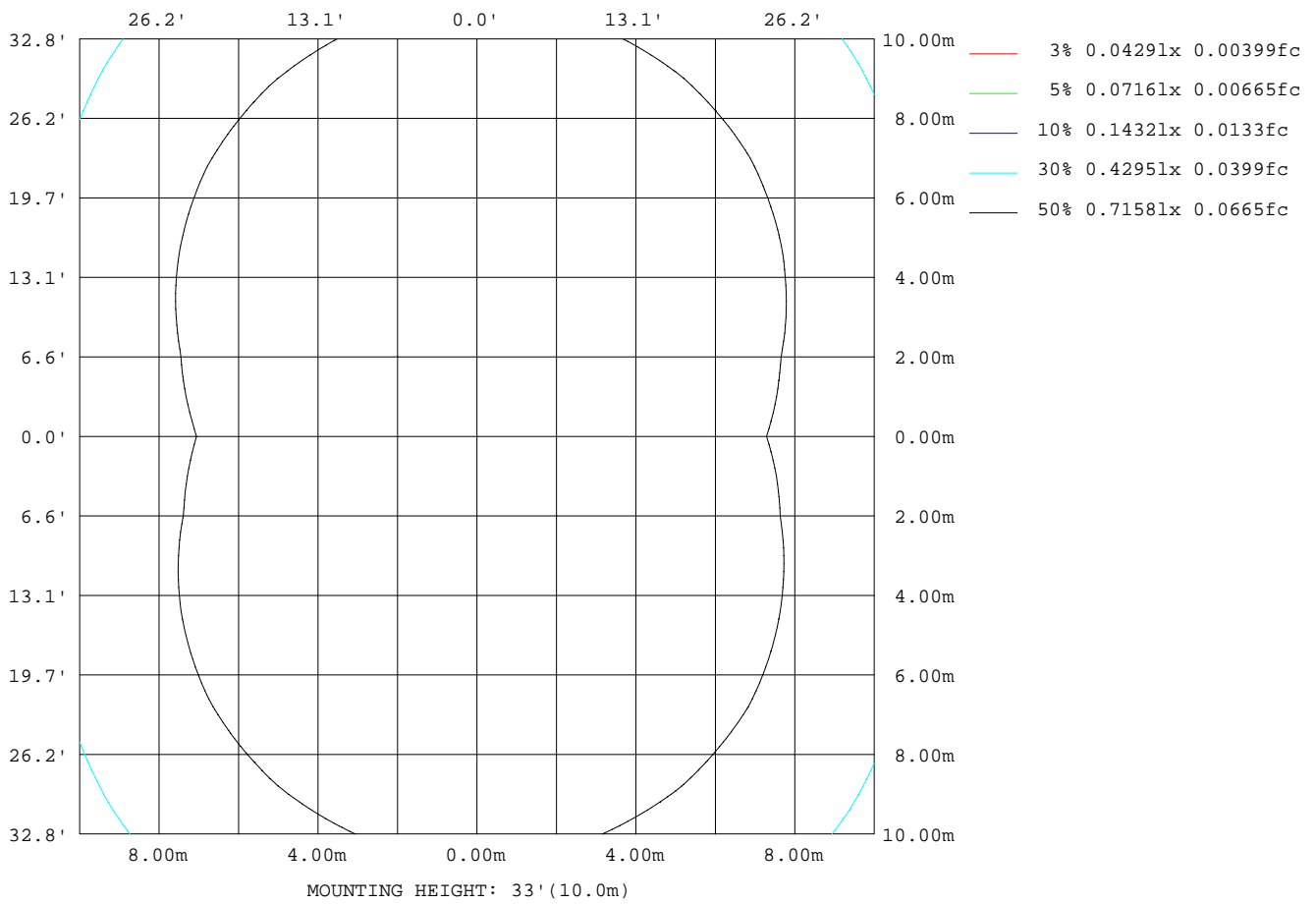
Note:The Curves indicate the illuminated area and the average illumination when the luminaire is at different distance.

C Range: 0 - 360DEG  
 C Interval: 15.0DEG  
 Test Speed: HIGH  
 Temperature: 25.0DEG  
 Operators: Alan Wang  
 Test Date: 08 May 2023

γ Range: 0 - 180DEG  
 γ Interval: 1.0DEG  
 Test System: EVERFINE GO-R5000\_V2 SYSTEM V2.00.416  
 Humidity: 43.5%  
 Test Distance: 2.500m [K=1.0390]  
 Remarks:

ISOLUX DIAGRAM

Test:U:277.00V I:0.1196A P:29.910W PF:0.9029 Freq:60.00Hz Lamp Flux:2514.84x1 lm		
NAME:	TYPE:LED	WEIGHT:
SPEC.:	DIM.:	SERIAL No.:
MFR.: ASD Lighting corp	SUR.:	Shielding Angle:



C Range: 0 - 360DEG  
 C Interval: 15.0DEG  
 Test Speed: HIGH  
 Temperature: 25.0DEG  
 Operators: Alan Wang  
 Test Date: 08 May 2023

γ Range: 0 - 180DEG  
 γ Interval: 1.0DEG  
 Test System: EVERFINE GO-R5000\_V2 SYSTEM V2.00.416  
 Humidity: 43.5%  
 Test Distance: 2.500m [K=1.0390]  
 Remarks:

## LED Avg.L Report

Test:U:277.00V I:0.1196A P:29.910W PF:0.9029 Freq:60.00Hz Lamp Flux:2514.84x1 lm		
NAME:	TYPE:LED	WEIGHT:
SPEC.:	DIM.:	SERIAL No.:
MFR.: ASD Lighting corp	SUR.:	Shielding Angle:

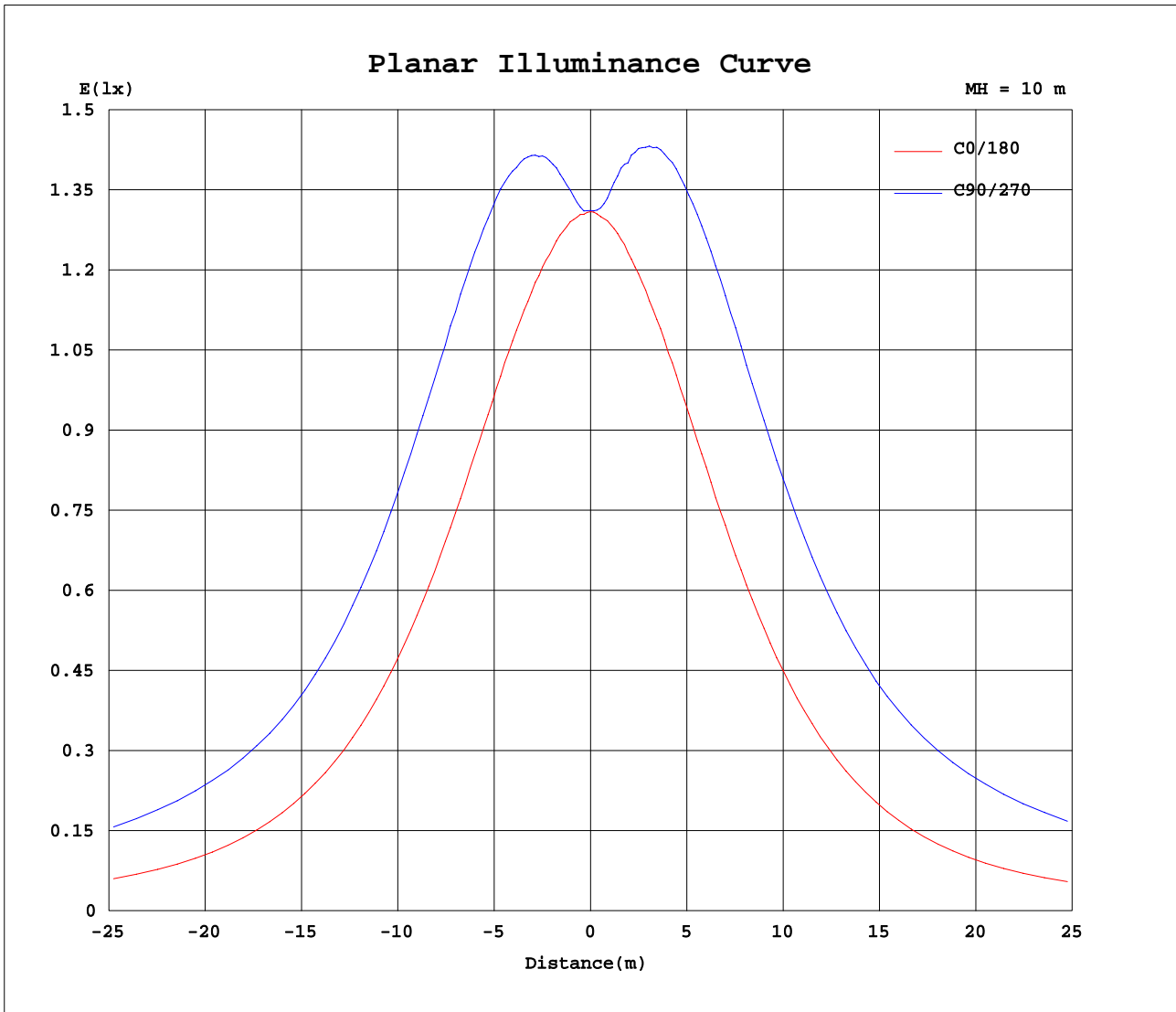
AvgL	cd/m2
L_0~180(65)av	1903
L_0~180(75)av	2918
L_0~180(85)av	6503
L_90~270(65)av	4846
L_90~270(75)av	10717
L_90~270(85)av	34010
L_45(65)av	3518
L_45(75)av	6598
L_45(85)av	20205

Standard: GB/T 29293-2012

C Range: 0 - 360DEG  
 C Interval: 15.0DEG  
 Test Speed: HIGH  
 Temperature: 25.0DEG  
 Operators: Alan Wang  
 Test Date: 08 May 2023

$\gamma$  Range: 0 - 180DEG  
 $\gamma$  Interval: 1.0DEG  
 Test System: EVERFINE GO-R5000\_V2 SYSTEM V2.00.416  
 Humidity: 43.5%  
 Test Distance: 2.500m [K=1.0390]  
 Remarks:

Planar Illuminance Curve



C Range: 0 - 360DEG  
 C Interval: 15.0DEG  
 Test Speed: HIGH  
 Temperature: 25.0DEG  
 Operators: Alan Wang  
 Test Date: 08 May 2023

$\gamma$  Range: 0 - 180DEG  
 $\gamma$  Interval: 1.0DEG  
 Test System: EVERFINE GO-R5000\_V2 SYSTEM V2.00.416  
 Humidity: 43.5%  
 Test Distance: 2.500m [K=1.0390]  
 Remarks:

LUMINOUS DISTRIBUTION INTENSITY DATA

Test:U:277.00V I:0.1196A P:29.910W PF:0.9029 Freq:60.00Hz Lamp Flux:2514.84x1 lm		
NAME:	TYPE:LED	WEIGHT:
SPEC.:	DIM.:	SERIAL No.:
MFR.: ASD Lighting corp	SUR.:	Shielding Angle:

Table--1

UNIT: cd

C(DEG) γ (DEG)	0	15	30	45	60	75	90	105	120	135	150	165	180	195	210	225	240	255	270
0	131	131	131	131	131	131	131	131	131	131	131	131	131	131	131	131	131	131	131
5	131	131	131	133	134	135	135	135	134	133	131	130	131	131	131	133	134	135	135
10	131	132	135	139	142	145	146	145	143	139	135	131	131	131	135	140	143	145	146
15	132	134	141	147	152	156	157	155	152	147	139	133	131	133	140	147	153	157	159
20	133	138	147	156	162	167	169	167	162	154	145	136	131	136	146	156	164	169	172
25	134	141	153	165	173	179	182	179	172	163	151	138	131	139	152	165	175	182	185
30	135	144	159	173	184	191	193	190	182	171	156	140	132	141	158	173	185	194	197
35	136	147	164	181	193	202	204	201	191	177	160	142	131	143	162	181	195	205	210
40	135	149	168	188	202	211	214	209	199	184	164	143	130	145	166	187	204	215	220
45	134	150	172	192	208	218	222	217	205	188	166	143	127	144	168	192	210	223	229
50	131	149	173	196	213	223	228	222	210	191	167	141	123	142	169	195	215	229	236
55	127	147	173	198	217	229	235	228	214	192	165	138	118	139	168	196	219	236	244
60	121	143	171	199	223	240	247	239	219	193	164	133	111	134	165	197	226	248	259
65	116	140	171	205	238	263	273	261	234	198	162	129	105	130	163	201	241	274	289
70	113	138	173	217	265	304	319	302	261	210	165	129	103	129	166	214	272	320	342
75	109	136	176	233	298	349	370	348	296	229	169	127	98.2	127	170	234	307	367	392
80	98.3	128	175	242	317	375	395	374	316	239	169	120	87.9	120	171	246	327	390	414
85	82.0	114	166	239	319	379	399	376	318	237	161	107	73.6	108	164	243	328	390	414
90	67.6	102	157	233	315	374	396	373	314	231	153	95.5	59.4	96.5	156	238	323	385	409
95	76.3	111	166	244	329	390	413	389	327	241	161	104	67.7	105	164	247	334	398	423
100	86.1	114	169	246	332	397	422	396	331	243	164	108	78.8	109	166	247	337	403	429
105	92.2	112	164	237	319	382	405	380	316	231	158	105	84.0	106	159	234	320	386	410
110	101	112	159	221	290	345	365	342	285	213	151	103	90.1	103	150	213	285	344	367
115	111	115	156	205	258	300	317	297	253	198	148	105	99.5	105	147	194	248	291	310
120	121	124	154	194	234	263	276	261	229	187	145	114	109	114	144	183	223	254	268
125	128	132	150	186	218	241	249	239	213	179	143	123	118	121	142	176	208	232	243
130	135	137	146	177	205	224	231	222	201	172	140	128	125	126	139	169	196	217	226
135	139	139	149	168	192	209	215	207	188	163	143	132	131	131	143	161	184	203	210
140	141	140	151	158	178	193	198	192	175	154	146	132	135	133	147	152	172	187	193
145	143	137	151	158	165	176	180	175	162	154	146	131	137	133	142	153	159	172	177
150	143	135	149	158	161	164	164	162	159	155	145	129	138	131	140	154	158	163	164
155	143	133	145	154	159	162	162	161	157	152	142	127	138	129	137	146	156	161	162
160	137	129	141	150	155	157	158	156	153	148	139	121	134	128	132	142	149	156	158
165	120	123	133	144	148	150	151	150	147	137	123	107	115	116	112	125	140	147	152
170	102	105	117	132	141	143	144	142	125	110	90.9	91.9	94.0	94.2	93.6	96.3	111	125	141
175	96.8	95.8	101	116	116	119	113	101	91.8	90.2	90.4	94.2	90.4	90.2	92.5	88.1	88.0	91.0	98.4
180	108	106	99.0	98.7	73.2	93.1	87.8	59.7	87.7	94.4	102	105	106	107	105	101	94.0	90.5	59.9

C Range: 0 - 360DEG  
 C Interval: 15.0DEG  
 Test Speed: HIGH  
 Temperature: 25.0DEG  
 Operators: Alan Wang  
 Test Date: 08 May 2023

γ Range: 0 - 180DEG  
 γ Interval: 1.0DEG  
 Test System: EVERFINE GO-R5000\_V2 SYSTEM V2.00.416  
 Humidity: 43.5%  
 Test Distance: 2.500m [K=1.0390]  
 Remarks:

LUMINOUS DISTRIBUTION INTENSITY DATA

Test:U:277.00V I:0.1196A P:29.910W PF:0.9029 Freq:60.00Hz Lamp Flux:2514.84x1 lm		
NAME:	TYPE:LED	WEIGHT:
SPEC.:	DIM.:	SERIAL No.:
MFR.: ASD Lighting corp	SUR.:	Shielding Angle:

Table--2

UNIT: cd

C( DEG) γ (DEG)	285	300	315	330	345														
0	131	131	131	131	131														
5	135	134	133	131	131														
10	145	143	140	135	131														
15	157	154	148	140	134														
20	170	164	157	147	137														
25	182	176	166	153	141														
30	195	187	175	160	144														
35	206	197	184	166	147														
40	216	207	191	171	149														
45	225	214	197	174	150														
50	232	220	200	176	150														
55	239	225	203	176	147														
60	251	233	206	175	143														
65	279	250	212	174	140														
70	326	282	226	177	139														
75	372	315	243	181	137														
80	393	333	252	179	129														
85	392	332	247	170	115														
90	387	325	240	160	103														
95	401	338	250	168	111														
100	404	340	250	169	114														
105	386	321	237	164	112														
110	346	289	219	158	112														
115	295	253	202	155	116														
120	257	229	191	153	126														
125	235	213	182	150	133														
130	219	200	174	146	137														
135	204	188	166	151	140														
140	189	175	158	153	140														
145	174	163	159	153	140														
150	165	162	159	151	138														
155	163	161	157	150	136														
160	159	157	153	147	137														
165	152	151	148	144	130														
170	144	144	142	132	115														
175	114	116	111	110	95.9														
180	59.9	60.8	90.6	97.0	101														

C Range: 0 - 360DEG  
 C Interval: 15.0DEG  
 Test Speed: HIGH  
 Temperature: 25.0DEG  
 Operators: Alan Wang  
 Test Date: 08 May 2023

γ Range: 0 - 180DEG  
 γ Interval: 1.0DEG  
 Test System: EVERFINE GO-R5000\_V2 SYSTEM V2.00.416  
 Humidity: 43.5%  
 Test Distance: 2.500m [K=1.0390]  
 Remarks: