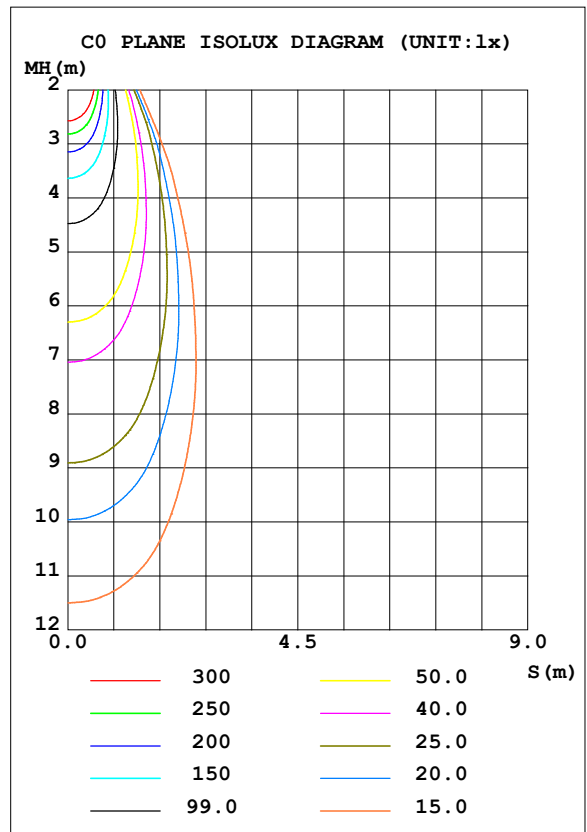
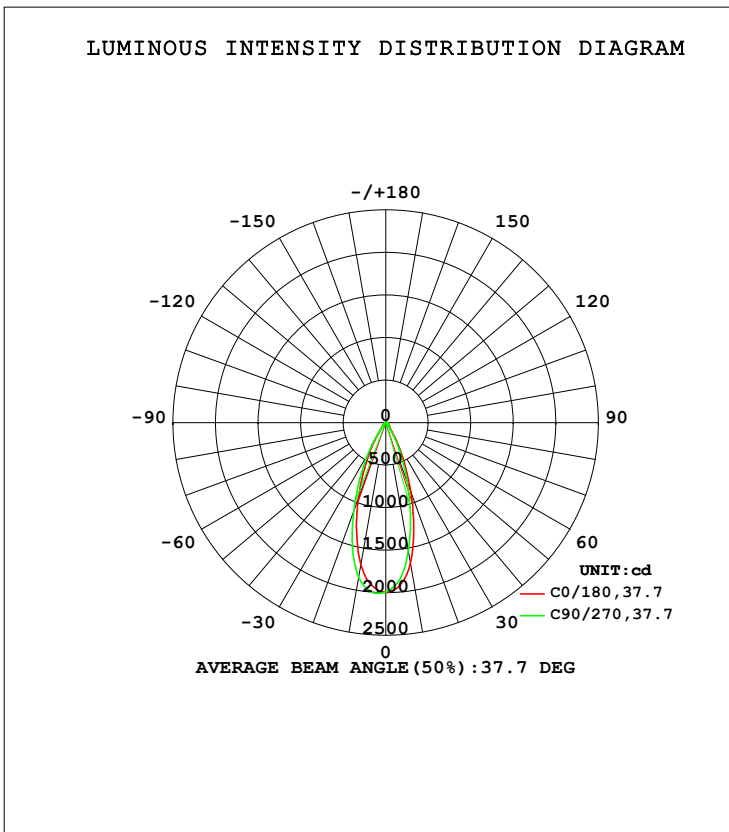


LUMINAIRE PHOTOMETRIC TEST REPORT

Test:U:119.97V I:0.1075A P:12.707W PF:0.9481 Freq:59.98Hz Lamp Flux:980.856x1 lm		
NAME: ASD-CD-TR-2D15AC-WH	TYPE:	WEIGHT:
SPEC.:3500K 90	DIM.:	SERIAL No.:
MFR.: ASD Lighting Corp	SUR.:	Shielding Angle:

DATA OF LAMP		PHOTOMETRIC DATA Eff: 77.19 lm/W			
MODEL		I _{max} (cd)	2008	S/MH (C0/180)	0.63
NOMINAL POWER (W)	15	LOR (%)	100.0	S/MH (C90/270)	0.68
RATED VOLTAGE (V)	120	TOTAL FLUX (lm)	980.86	<input type="checkbox"/> UP, DN (C0-180)	0.0, 45.5
NOMINAL FLUX (lm)	980.856	CIE CLASS	DIRECT	<input type="checkbox"/> UP, DN (C180-360)	0.0, 54.5
LAMPS INSIDE	1	<input type="checkbox"/> up (%)	0.0	CIBSE SHR NOM	0.50
TEST VOLTAGE (V)	120	<input type="checkbox"/> down (%)	100.0	CIBSE SHR MAX	0.65



C Range: 0 - 360DEG
 C Interval: 22.5DEG
 Test Speed: HIGH
 Temperature: 25.3DEG
 Operators:
 Test Date: 2021-10-19

Range: 0 - 90DEG
 Interval: 1.0DEG
 Test System: EVERFINE GO-SPEX500_V1 SYSTEM V2.00.421
 Humidity: 65.0%
 Test Distance: 3.080m [K=1.0000]
 Remarks:

ZONAL FLUX DIAGRAM

ZONAL FLUX DIAGRAM:

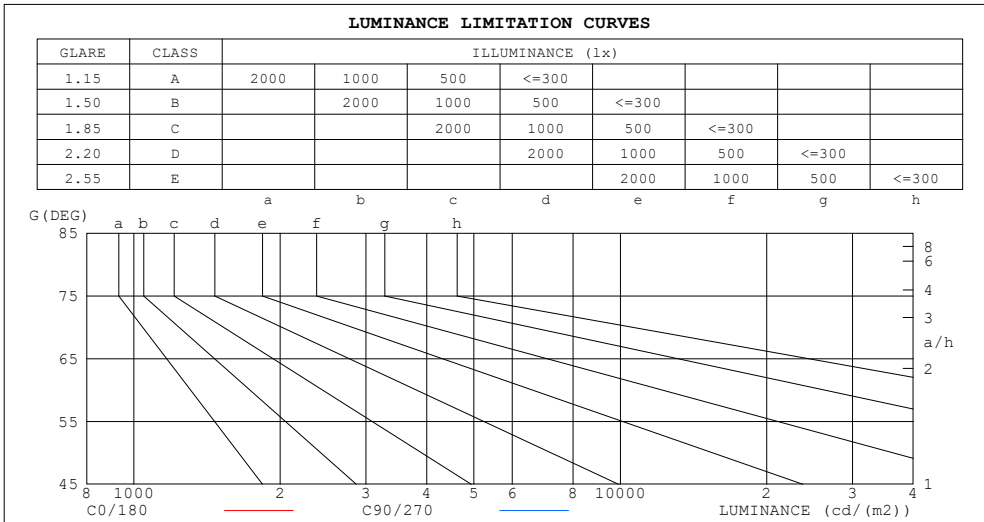
°	C0	C45	C90	C135	C180	C225	C270	C315	°	□ zone	□ total	%lum, lamp
10	1676	1617	1532	1636	1694	1758	1844	1777	0- 10	176.2	176.2	18,18
20	859.5	818.4	737.3	870.5	942.2	1025	1106	1036	10- 20	361.7	537.9	54.8,54.8
30	285.0	266.5	222.2	300.0	336.9	382.4	410.9	357.9	20- 30	266.0	803.9	82,82
40	68.79	65.85	60.76	68.75	73.92	76.19	73.40	73.64	30- 40	92.82	896.7	91.4,91.4
50	38.44	38.12	36.01	36.93	37.62	38.12	38.24	39.22	40- 50	39.05	935.7	95.4,95.4
60	21.00	20.69	19.20	19.59	20.26	18.96	18.05	20.68	50- 60	24.89	960.6	97.9,97.9
70	11.15	10.57	8.378	9.155	10.25	8.180	7.116	9.174	60- 70	14.07	974.7	99.4,99.4
80	3.990	2.289	1.130	1.826	3.364	1.358	0.6970	1.549	70- 80	5.625	980.3	99.9,99.9
90	0.0328	0.0329	0.0278	0.0226	0.0438	0.0376	0.0398	0.0488	80- 90	0.5469	980.9	100,100
100									90-100			
110									100-110			
120									110-120			
130									120-130			
140									130-140			
150									140-150			
160									150-160			
170									160-170			
180									170-180			
DEG	LUMINOUS INTENSITY:cd									UNIT:lm		

C Range: 0 - 360DEG
 C Interval: 22.5DEG
 Test Speed: HIGH
 Temperature:25.3DEG
 Operators:
 Test Date:2021-10-19

□ Range: 0 - 90DEG
 □ Interval: 1.0DEG
 Test System:EVERFINE GO-SPEX500_V1 SYSTEM V2.00.421
 Humidity:65.0%
 Test Distance:3.080m [K=1.0000]
 Remarks:

LUMINANCE LIMITATION CURVES

Test:U:119.97V I:0.1075A P:12.707W PF:0.9481 Freq:59.98Hz Lamp Flux:980.856x1 lm		
NAME: ASD-CD-TR-2D15AC-WH	TYPE:	WEIGHT:
SPEC.:3500K 90	DIM.:	SERIAL No.:
MFR.: ASD Lighting Corp	SUR.:	Shielding Angle:



LUMINANCE cd/(m2)		
G (DEG)	C0/180	C90/270
85	54	27
80	206	58
75	252	146
70	293	220
65	335	289
60	377	345
55	446	406
50	537	503
45	638	576

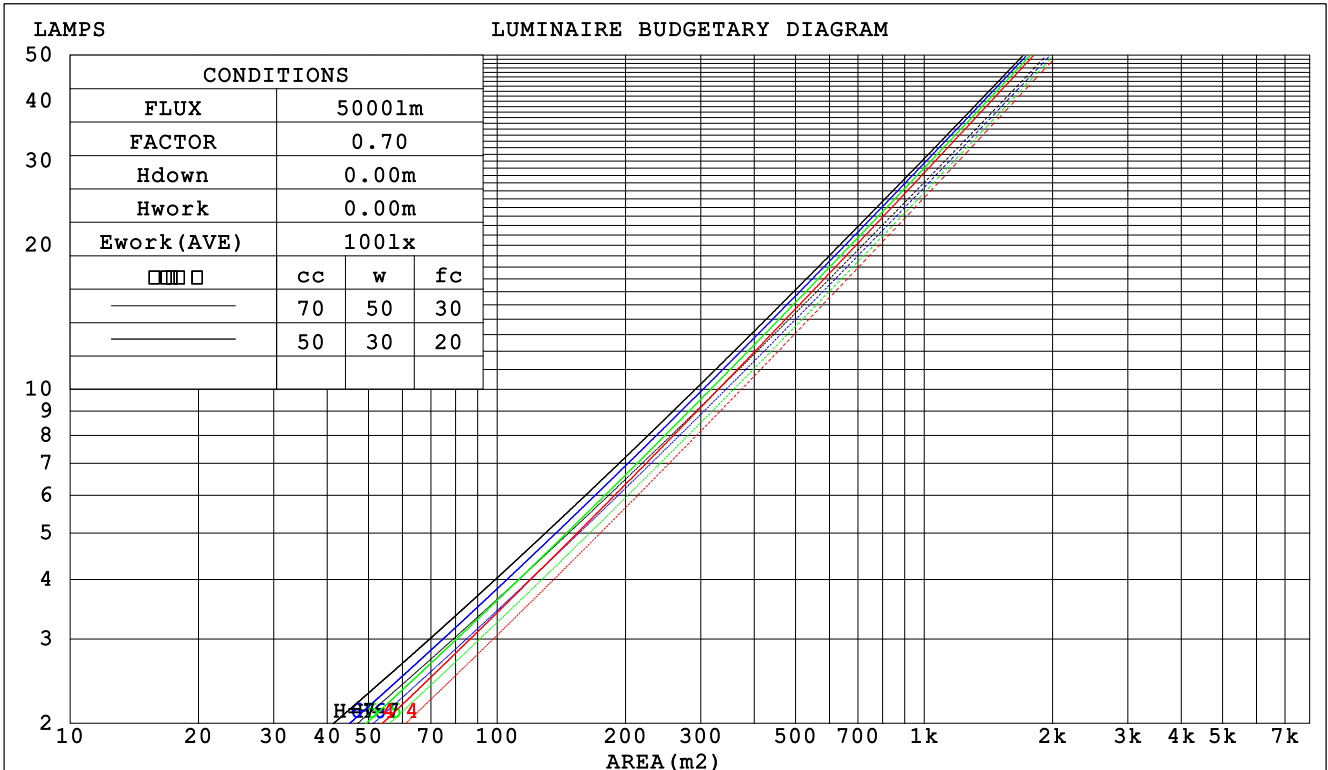
C Range: 0 - 360DEG
 C Interval: 22.5DEG
 Test Speed: HIGH
 Temperature:25.3DEG
 Operators:
 Test Date:2021-10-19

Range: 0 - 90DEG
 Interval: 1.0DEG
 Test System:EVERFINE GO-SPEX500_V1 SYSTEM V2.00.421
 Humidity:65.0%
 Test Distance:3.080m [K=1.0000]
 Remarks:

CU AND LUMINAIRE BUDGETARY ESTIMATE DIAGRAM

Test:U:119.97V I:0.1075A P:12.707W PF:0.9481 Freq:59.98Hz Lamp Flux:980.856x1 lm		
NAME: ASD-CD-TR-2D15AC-WH	TYPE:	WEIGHT:
SPEC.:3500K 90	DIM.:	SERIAL No.:
MFR.: ASD Lighting Corp	SUR.:	Shielding Angle:

□cc	80%			70%			50%			30%			10%			0
□w	50%	30%	10%	50%	30%	10%	50%	30%	10%	50%	30%	10%	50%	30%	10%	0
□fc	20%			20%			20%			20%			20%			0
RCR	RCR:Room Cavity Ratio						Coefficients of Utilization(CU)									
0.0	1.19	1.19	1.19	1.16	1.16	1.16	1.11	1.11	1.11	1.06	1.06	1.06	1.02	1.02	1.02	.00
1.0	1.11	1.09	1.07	1.09	1.07	1.05	1.05	1.03	1.02	1.01	.00	.99	.98	.97	.96	.94
2.0	1.04	1.00	.97	1.02	.99	.96	.99	.96	.94	.96	.94	.92	.93	.92	.90	.88
3.0	.98	.93	.89	.96	.92	.89	.94	.90	.87	.91	.89	.86	.89	.87	.85	.83
4.0	.92	.87	.83	.91	.86	.83	.89	.85	.82	.87	.84	.81	.85	.82	.80	.79
5.0	.87	.82	.78	.86	.81	.78	.85	.80	.77	.83	.79	.76	.82	.78	.76	.74
6.0	.83	.77	.74	.82	.77	.73	.81	.76	.73	.79	.75	.72	.78	.75	.72	.71
7.0	.79	.73	.70	.78	.73	.69	.77	.72	.69	.76	.72	.69	.75	.71	.68	.67
8.0	.75	.70	.66	.75	.70	.66	.74	.69	.66	.73	.68	.65	.72	.68	.65	.64
9.0	.72	.67	.63	.71	.66	.63	.70	.66	.63	.70	.65	.62	.69	.65	.62	.61
10.0	.69	.64	.60	.68	.63	.60	.68	.63	.60	.67	.63	.60	.66	.62	.60	.58



C Range: 0 - 360DEG
 C Interval: 22.5DEG
 Test Speed: HIGH
 Temperature:25.3DEG
 Operators:
 Test Date:2021-10-19

□ Range: 0 - 90DEG
 □ Interval: 1.0DEG
 Test System:EVERFINE GO-SPEX500_V1 SYSTEM V2.00.421
 Humidity:65.0%
 Test Distance:3.080m [K=1.0000]
 Remarks:

WEC AND CCEC

Test:U:119.97V I:0.1075A P:12.707W PF:0.9481 Freq:59.98Hz Lamp Flux:980.856x1 lm		
NAME: ASD-CD-TR-2D15AC-WH	TYPE:	WEIGHT:
SPEC.:3500K 90	DIM.:	SERIAL No.:
MFR.: ASD Lighting Corp	SUR.:	Shielding Angle:

<input type="checkbox"/> cc	80%	70%	50%	30%	10%	0
<input type="checkbox"/> w	50% 30% 10%	50% 30% 10%	50% 30% 10%	50% 30% 10%	50% 30% 10%	0
<input type="checkbox"/> fc	20%	20%	20%	20%	20%	0
RCR	RCR:Room Cavity Ratio		Wall Exitance Coefficients (WEC)			
0.0						
1.0	.170 .097 .031	.163 .093 .030	.151 .086 .028	.139 .080 .026	.128 .074 .024	
2.0	.161 .088 .027	.155 .086 .026	.145 .081 .025	.135 .076 .024	.126 .071 .022	
3.0	.152 .081 .024	.147 .079 .024	.138 .075 .023	.130 .071 .022	.122 .068 .021	
4.0	.143 .074 .022	.139 .073 .022	.132 .070 .021	.125 .067 .020	.118 .064 .020	
5.0	.136 .069 .020	.132 .068 .020	.126 .065 .019	.119 .063 .019	.114 .061 .018	
6.0	.129 .065 .018	.126 .063 .018	.120 .061 .018	.114 .059 .017	.109 .058 .017	
7.0	.122 .061 .017	.120 .060 .017	.115 .058 .017	.110 .056 .016	.105 .055 .016	
8.0	.117 .057 .016	.114 .056 .016	.110 .055 .016	.106 .053 .015	.102 .052 .015	
9.0	.112 .054 .015	.109 .053 .015	.105 .052 .015	.102 .051 .015	.098 .050 .014	
10.0	.107 .051 .014	.105 .051 .014	.101 .050 .014	.098 .049 .014	.095 .048 .014	

<input type="checkbox"/> cc	80%	70%	50%	30%	10%	0
<input type="checkbox"/> w	50% 30% 10%	50% 30% 10%	50% 30% 10%	50% 30% 10%	50% 30% 10%	0
<input type="checkbox"/> fc	20%	20%	20%	20%	20%	0
RCR	RCR:Room Cavity Ratio		Ceiling Cavity Exitance Coefficients (CCEC)			
0.0	.190 .190 .190	.163 .163 .163	.111 .111 .111	.064 .064 .064	.020 .020 .020	
1.0	.171 .157 .145	.146 .135 .125	.100 .093 .087	.057 .054 .050	.018 .017 .016	
2.0	.155 .133 .114	.133 .114 .098	.091 .079 .069	.052 .046 .040	.017 .015 .013	
3.0	.142 .113 .091	.121 .098 .079	.083 .068 .055	.048 .040 .033	.015 .013 .011	
4.0	.131 .099 .074	.112 .085 .064	.077 .059 .045	.045 .035 .027	.014 .011 .009	
5.0	.121 .087 .061	.104 .075 .053	.072 .052 .038	.042 .031 .022	.013 .010 .007	
6.0	.113 .077 .051	.098 .067 .045	.067 .047 .032	.039 .028 .019	.013 .009 .006	
7.0	.107 .070 .044	.092 .060 .038	.063 .042 .027	.037 .025 .016	.012 .008 .005	
8.0	.101 .063 .037	.087 .055 .033	.060 .038 .023	.035 .023 .014	.011 .007 .005	
9.0	.095 .058 .033	.082 .050 .028	.057 .035 .020	.033 .021 .012	.011 .007 .004	
10.0	.090 .053 .029	.078 .046 .025	.054 .033 .018	.032 .019 .011	.010 .006 .004	

C Range: 0 - 360DEG
 C Interval: 22.5DEG
 Test Speed: HIGH
 Temperature:25.3DEG
 Operators:
 Test Date:2021-10-19

Range: 0 - 90DEG
 Interval: 1.0DEG
 Test System:EVERFINE GO-SPEX500_V1 SYSTEM V2.00.421
 Humidity:65.0%
 Test Distance:3.080m [K=1.0000]
 Remarks:

UGR(Unified Glare Rating) Table

Test:U:119.97V I:0.1075A P:12.707W PF:0.9481 Freq:59.98Hz Lamp Flux:980.856x1 lm										
NAME: ASD-CD-TR-2D15AC-WH					TYPE:			WEIGHT:		
SPEC.:3500K 90					DIM.:			SERIAL No.:		
MFR.: ASD Lighting Corp					SUR.:			Shielding Angle:		
ceiling/cavity	0.7	0.7	0.5	0.5	0.3	0.7	0.7	0.5	0.5	0.3
walls	0.5	0.3	0.5	0.3	0.3	0.5	0.3	0.5	0.3	0.3
working plane	0.2	0.2	0.2	0.2	0.2	0.2	0.2	0.2	0.2	0.2
Room dimensions	Viewed crosswise					Viewed endwise				
x = 2H y = 2H	5.0	5.8	5.2	6.0	6.1	4.4	5.2	4.6	5.4	5.6
3H	5.6	6.4	5.9	6.6	6.8	4.9	5.7	5.2	5.9	6.1
4H	5.9	6.7	6.2	6.9	7.1	5.0	5.8	5.3	6.0	6.2
6H	6.1	6.8	6.3	7.0	7.3	5.0	5.7	5.3	6.0	6.2
8H	6.0	6.7	6.3	7.0	7.2	5.0	5.7	5.3	5.9	6.2
12H	6.0	6.7	6.3	6.9	7.2	4.9	5.6	5.2	5.8	6.1
4H 2H	5.2	6.0	5.5	6.2	6.4	4.7	5.5	5.0	5.7	5.9
3H	6.0	6.7	6.4	7.0	7.2	5.4	6.1	5.7	6.3	6.6
4H	6.4	7.0	6.7	7.3	7.6	5.5	6.1	5.9	6.4	6.8
6H	6.6	7.1	7.0	7.5	7.8	5.5	6.1	5.9	6.4	6.7
8H	6.6	7.1	7.0	7.4	7.8	5.5	6.0	5.9	6.3	6.7
12H	6.6	7.0	7.0	7.4	7.8	5.4	5.9	5.9	6.3	6.7
8H 4H	6.4	6.9	6.8	7.2	7.6	5.6	6.1	6.0	6.4	6.8
6H	6.7	7.1	7.1	7.5	7.9	5.6	6.0	6.0	6.4	6.8
8H	6.7	7.0	7.1	7.5	7.9	5.6	5.9	6.0	6.3	6.8
12H	6.6	7.0	7.1	7.4	7.9	5.5	5.8	6.0	6.3	6.7
12H 4H	6.4	6.8	6.8	7.2	7.6	5.6	6.0	6.0	6.4	6.8
6H	6.6	7.0	7.1	7.4	7.9	5.6	5.9	6.0	6.4	6.8
8H	6.6	7.0	7.1	7.4	7.9	5.5	5.8	6.0	6.3	6.8
Variations with the observer position at spacings:										
S = 1.0H	+ 0.6 / - 0.7					+ 0.7 / - 0.9				
1.5H	+ 0.8 / - 0.4					+ 0.5 / - 0.5				
2.0H	+ 0.9 / - 0.8					+ 1.0 / - 1.0				

CIE Pub.117, 980.9 lm Total Lamp Luminous Flux Correct (8log(F/F0) = -0.1)
 Area: 0.111111 m2

C Range: 0 - 360DEG
 C Interval: 22.5DEG
 Test Speed: HIGH
 Temperature:25.3DEG
 Operators:
 Test Date:2021-10-19

Range: 0 - 90DEG
 Interval: 1.0DEG
 Test System:EVERFINE GO-SPEX500_V1 SYSTEM V2.00.421
 Humidity:65.0%
 Test Distance:3.080m [K=1.0000]
 Remarks:

UTILIZATION FACTORS TABLE

Test:U:119.97V I:0.1075A P:12.707W PF:0.9481 Freq:59.98Hz Lamp Flux:980.856x1 lm		
NAME: ASD-CD-TR-2D15AC-WH	TYPE:	WEIGHT:
SPEC.:3500K 90	DIM.:	SERIAL No.:
MFR.: ASD Lighting Corp	SUR.:	Shielding Angle:

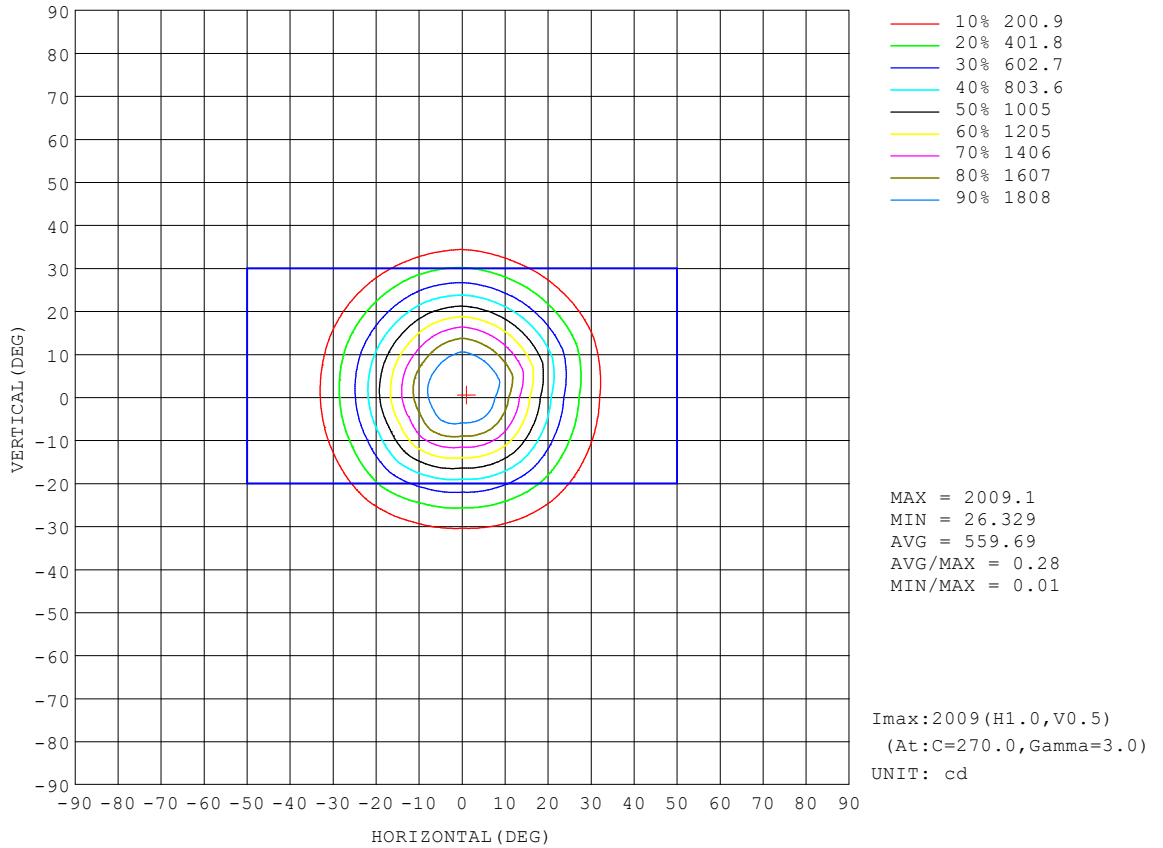
REFLECTANCE										
Ceiling	0.8	0.8	0.8	0.7	0.7	0.7	0.5	0.5	0.5	0
Walls	0.7	0.5	0.3	0.7	0.5	0.3	0.7	0.5	0.3	0
Working plane	0.2	0.2	0.2	0.2	0.2	0.2	0.2	0.2	0.2	0
ROOM INDEX	UTILIZATION FACTORS (PERCENT) $k(RI) \times RCR = 5$									
k = 0.60	86	80	76	86	79	76	85	79	75	72
0.80	94	88	84	93	87	84	92	87	83	79
1.00	98	92	89	97	92	88	96	92	88	84
1.25	102	97	93	101	96	93	99	95	92	88
1.50	105	100	97	104	99	96	102	98	95	91
2.00	108	104	100	107	103	100	104	101	98	93
2.50	110	106	103	108	105	102	105	102	100	94
3.00	111	108	105	110	106	104	106	104	102	95
4.00	114	111	108	111	109	107	108	106	104	97
5.00	115	112	111	113	111	109	109	107	106	98
ROOM INDEX	UF(total)									Direct
According to DIN EN 13032-2 2004			Suspended				SHRNOM = 1.25			

C Range: 0 - 360DEG
 C Interval: 22.5DEG
 Test Speed: HIGH
 Temperature:25.3DEG
 Operators:
 Test Date:2021-10-19

Range: 0 - 90DEG
 Interval: 1.0DEG
 Test System:EVERFINE GO-SPEX500_V1 SYSTEM V2.00.421
 Humidity:65.0%
 Test Distance:3.080m [K=1.0000]
 Remarks:

ISOCANDELA DIAGRAM

Test:U:119.97V I:0.1075A P:12.707W PF:0.9481 Freq:59.98Hz Lamp Flux:980.856x1 lm		
NAME: ASD-CD-TR-2D15AC-WH	TYPE:	WEIGHT:
SPEC.:3500K 90	DIM.:	SERIAL No.:
MFR.: ASD Lighting Corp	SUR.:	Shielding Angle:

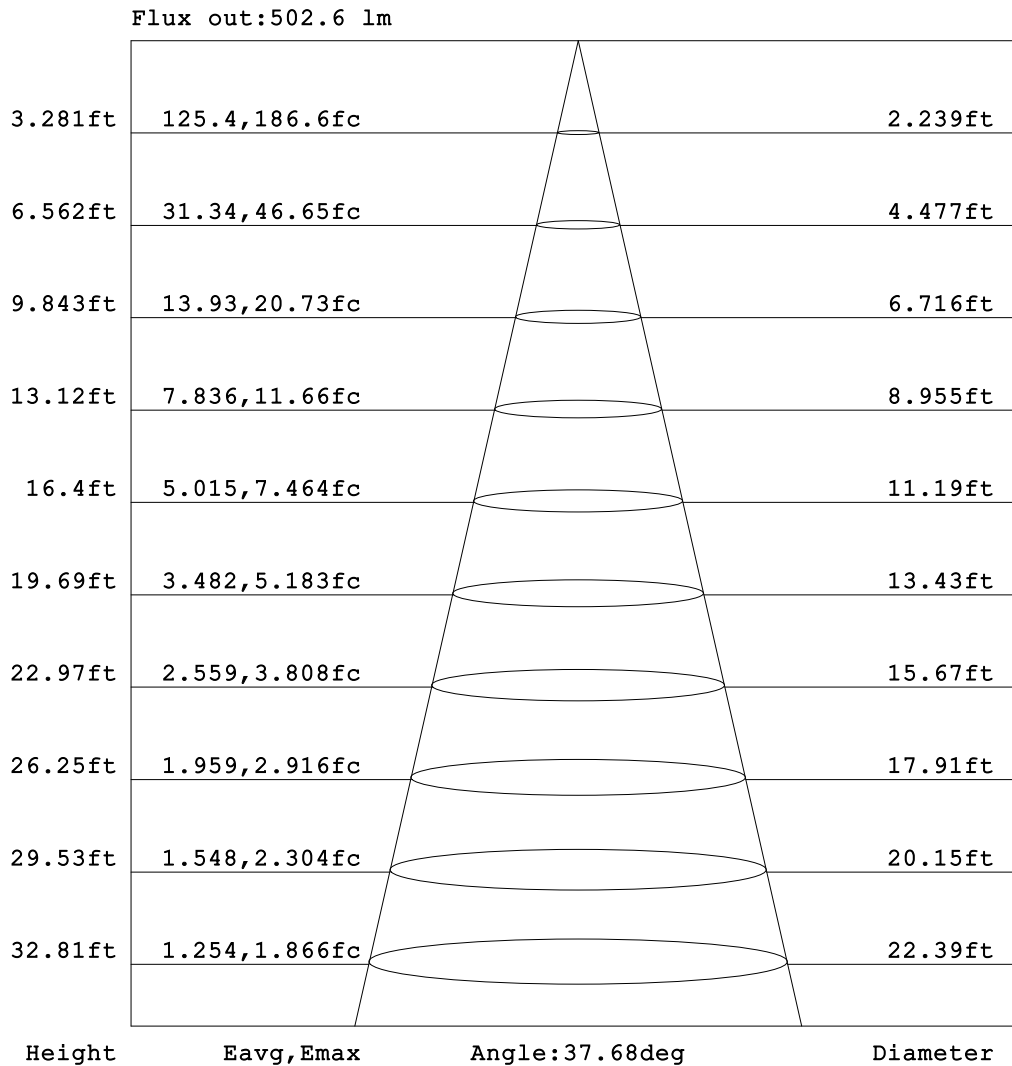


C Range: 0 - 360DEG
 C Interval: 22.5DEG
 Test Speed: HIGH
 Temperature:25.3DEG
 Operators:
 Test Date:2021-10-19

Range: 0 - 90DEG
 Interval: 1.0DEG
 Test System:EVERFINE GO-SPEX500_V1 SYSTEM V2.00.421
 Humidity:65.0%
 Test Distance:3.080m [K=1.0000]
 Remarks:

AAI Figure

Test:U:119.97V I:0.1075A P:12.707W PF:0.9481 Freq:59.98Hz Lamp Flux:980.856x1 lm		
NAME: ASD-CD-TR-2D15AC-WH	TYPE:	WEIGHT:
SPEC.:3500K 90	DIM.:	SERIAL No.:
MFR.: ASD Lighting Corp	SUR.:	Shielding Angle:



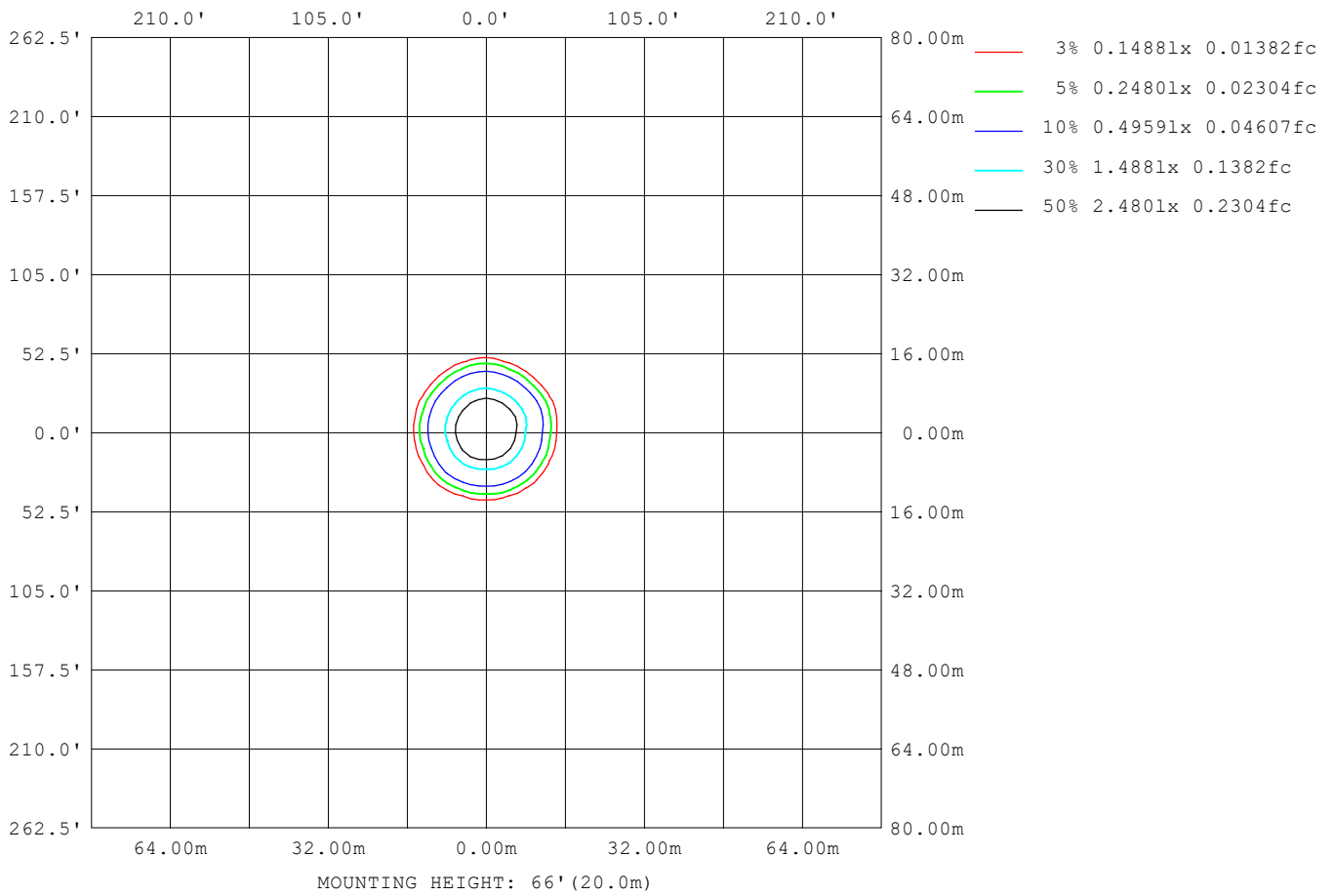
Note:The Curves indicate the illuminated area and the average illumination when the luminaire is at different distance.

C Range: 0 - 360DEG
 C Interval: 22.5DEG
 Test Speed: HIGH
 Temperature:25.3DEG
 Operators:
 Test Date:2021-10-19

Range: 0 - 90DEG
 Interval: 1.0DEG
 Test System:EVERFINE GO-SPEX500_V1 SYSTEM V2.00.421
 Humidity:65.0%
 Test Distance:3.080m [K=1.0000]
 Remarks:

ISOLUX DIAGRAM

Test:U:119.97V I:0.1075A P:12.707W PF:0.9481 Freq:59.98Hz Lamp Flux:980.856x1 lm		
NAME: ASD-CD-TR-2D15AC-WH	TYPE:	WEIGHT:
SPEC.:3500K 90	DIM.:	SERIAL No.:
MFR.: ASD Lighting Corp	SUR.:	Shielding Angle:



C Range: 0 - 360DEG
 C Interval: 22.5DEG
 Test Speed: HIGH
 Temperature:25.3DEG
 Operators:
 Test Date:2021-10-19

Range: 0 - 90DEG
 Interval: 1.0DEG
 Test System:EVERFINE GO-SPEX500_V1 SYSTEM V2.00.421
 Humidity:65.0%
 Test Distance:3.080m [K=1.0000]
 Remarks:

LED Avg.L Report

Test:U:119.97V I:0.1075A P:12.707W PF:0.9481 Freq:59.98Hz Lamp Flux:980.856x1 lm		
NAME: ASD-CD-TR-2D15AC-WH	TYPE:	WEIGHT:
SPEC.:3500K 90	DIM.:	SERIAL No.:
MFR.: ASD Lighting Corp	SUR.:	Shielding Angle:

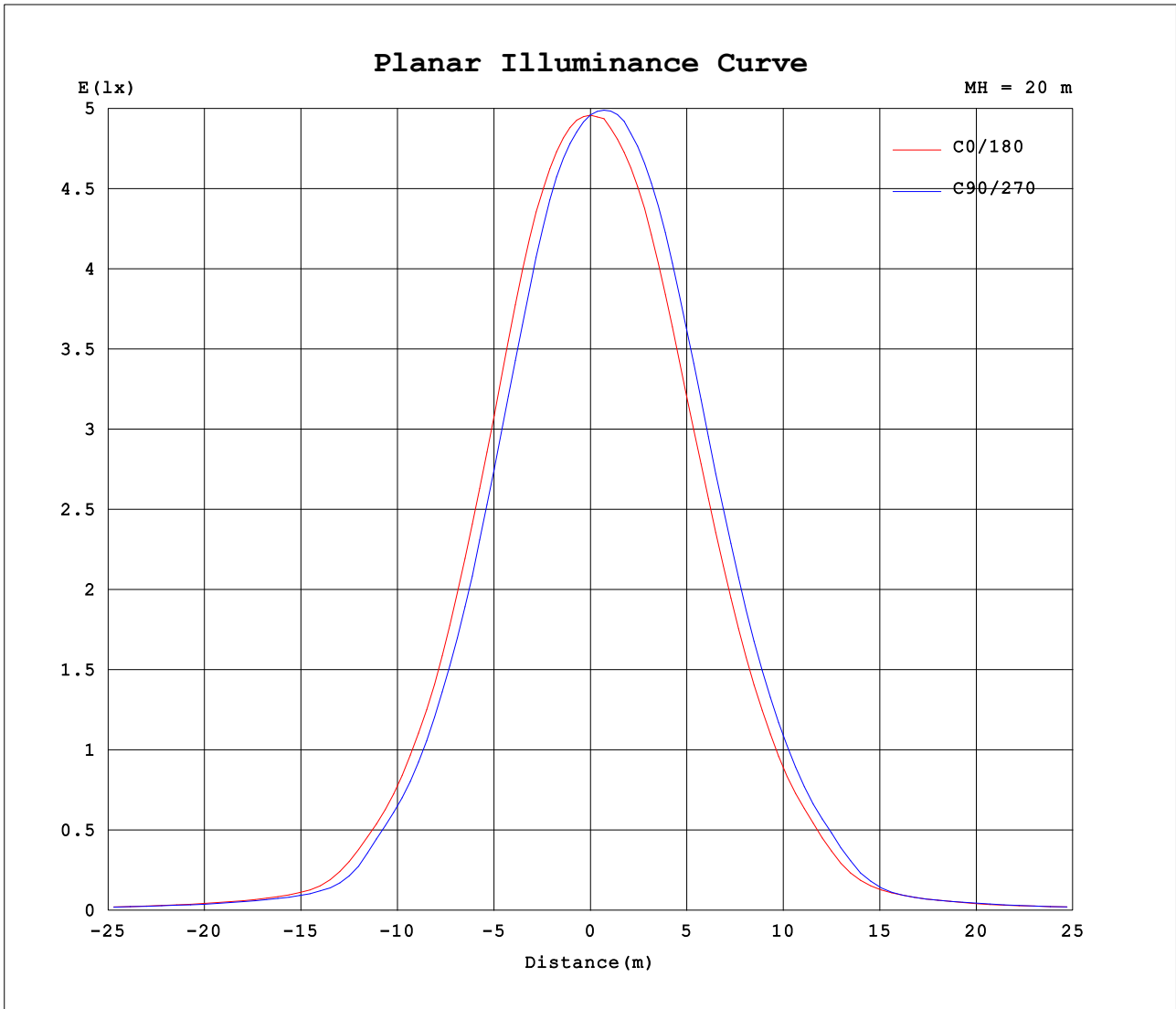
AvgL	cd/m2
L_0~180 (65) av	326
L_0~180 (75) av	239
L_0~180 (85) av	54
L_90~270 (65) av	272
L_90~270 (75) av	132
L_90~270 (85) av	17
L_45 (65) av	304
L_45 (75) av	176
L_45 (85) av	18

Standard: GB/T 29293-2012

C Range: 0 - 360DEG
 C Interval: 22.5DEG
 Test Speed: HIGH
 Temperature:25.3DEG
 Operators:
 Test Date:2021-10-19

Range: 0 - 90DEG
 Interval: 1.0DEG
 Test System:EVERFINE GO-SPEX500_V1 SYSTEM V2.00.421
 Humidity:65.0%
 Test Distance:3.080m [K=1.0000]
 Remarks:

Planar Illuminance Curve



C Range: 0 - 360DEG
 C Interval: 22.5DEG
 Test Speed: HIGH
 Temperature: 25.3DEG
 Operators:
 Test Date: 2021-10-19

Range: 0 - 90DEG
 Interval: 1.0DEG
 Test System: EVERFINE GO-SPEX500_V1 SYSTEM V2.00.421
 Humidity: 65.0%
 Test Distance: 3.080m [K=1.0000]
 Remarks:

LUMINOUS DISTRIBUTION INTENSITY DATA

Test:U:119.97V I:0.1075A P:12.707W PF:0.9481 Freq:59.98Hz Lamp Flux:980.856x1 lm		
NAME: ASD-CD-TR-2D15AC-WH	TYPE:	WEIGHT:
SPEC.:3500K 90	DIM.:	SERIAL No.:
MFR.: ASD Lighting Corp	SUR.:	Shielding Angle:

Table--1

UNIT: cd

C (DEG) \ □ (DEG)	0	22.5	45	67.5	90	112.5	135	157.5	180	202.5	225	247.5	270	292.5	315	337.5			
0	1989	1989	1989	1989	1989	1989	1989	1989	1989	1989	1989	1989	1989	1989	1989	1989			
5	1920	1905	1892	1876	1856	1874	1887	1888	1918	1934	1956	1972	1996	1975	1959	1954			
10	1676	1639	1617	1567	1532	1583	1636	1627	1694	1732	1758	1800	1844	1802	1777	1769			
15	1272	1233	1217	1166	1127	1187	1260	1253	1333	1375	1413	1472	1518	1469	1440	1429			
20	860	822	818	771	737	785	870	867	942	986	1025	1081	1106	1062	1036	1021			
25	522	496	492	453	434	462	541	541	593	639	667	710	716	674	654	643			
30	285	268	267	242	222	245	300	299	337	369	382	407	411	375	358	355			
35	113	106	105	94.1	89.4	96.1	119	120	138	150	154	163	171	145	140	143			
40	68.8	66.1	65.9	62.5	60.8	62.3	68.7	68.5	73.9	76.6	76.2	77.1	73.4	70.8	73.6	74.5			
45	50.3	48.1	47.8	46.4	45.4	45.7	46.7	45.5	49.6	51.0	51.3	52.3	52.0	52.3	51.9	52.5			
50	38.4	37.9	38.1	37.0	36.0	36.2	36.9	35.7	37.6	38.1	38.1	37.6	38.2	38.8	39.2	39.4			
55	28.5	27.8	27.8	26.6	26.0	26.3	27.1	26.4	27.8	28.5	27.4	25.6	25.9	26.5	29.2	30.0			
60	21.0	20.7	20.7	20.0	19.2	19.1	19.6	19.0	20.3	20.3	19.0	18.0	18.1	18.7	20.7	21.8			
65	15.8	15.5	15.5	14.6	13.6	13.4	14.1	13.9	14.8	14.5	13.1	12.0	12.0	12.6	14.5	16.2			
70	11.2	11.0	10.6	9.33	8.38	8.37	9.16	9.59	10.2	9.65	8.18	7.24	7.12	7.61	9.17	11.0			
75	7.26	7.14	6.03	4.90	4.22	4.30	5.05	5.86	6.46	5.63	4.30	3.53	3.39	3.70	4.91	6.61			
80	3.99	3.48	2.29	1.47	1.13	1.20	1.83	2.71	3.36	2.45	1.36	0.79	0.70	0.80	1.55	3.00			
85	0.53	0.63	0.36	0.32	0.27	0.24	0.17	0.50	0.52	0.38	0.07	0.07	0.07	0.08	0.12	0.45			
90	0.03	0.03	0.03	0.02	0.03	0.03	0.02	0.03	0.04	0.04	0.04	0.04	0.04	0.04	0.05	0.04			

C Range: 0 - 360DEG
 C Interval: 22.5DEG
 Test Speed: HIGH
 Temperature:25.3DEG
 Operators:
 Test Date:2021-10-19

□ Range: 0 - 90DEG
 □ Interval: 1.0DEG
 Test System:EVERFINE GO-SPEX500_V1 SYSTEM V2.00.421
 Humidity:65.0%
 Test Distance:3.080m [K=1.0000]
 Remarks: