



LED DISK LIGHT

WITH MOTION SENSOR

► **DESIGN & OPTIONS** - LED DISK LIGHT WITH MOTION SENSOR has a classic. The built-in motion sensor turns off the fixture automatically when no motion is detected. This fixture also includes a CCT option, letting you set it to 2700K, 3000K, 3500K, 4000K or 5000K with a simple switch. The 110° beam angle and CRI90+ grants you smooth and even lighting. It comes in a 6" size with a WHITE finish.

► **INSTALLATION** - LED DISK LIGHT WITH MOTION SENSOR can be installed either on an existing outlet box or a remodeled can using our retrofit kit (sold separately). This fixture is suitable for most new construction, remodeling, and shallow recessed lighting housings. Refer to install instructions for detailed steps.

► **APPLICATION** - Install the LED DISK LIGHT WITH MOTION SENSOR to the ceiling for bright light in your family room, bedroom, hallway, corridor, or any other common area in your living space. It is suitable for Wet locations, making it perfect for kitchen and bathroom lighting as well. You could also use it as a complimentary light to an existing ceiling light.

► **ENERGY SAVING & EFFICIENCY** - Replacing an incandescent fixture with LED DISK LIGHT WITH MOTION SENSOR can save you 8 times as much on your current energy costs. With a lifespan of 50,000 hours, these fixtures are made to last decades under normal operation! This fixture will save you a significant amount of money in its lifetime.

► **CERTIFICATION & WARRANTY** - Buy with confidence: ASD provides a 5-year warranty along with UL and ENERGY STAR certifications to guarantee top quality products and safety!

Top US certifications allow participation in rebates; please check the rebate programs available in your state.

Catalog number	
Notes	
Type	



PRODUCT LEGEND:

Family	Size	Dimmable	Watts	CCT	Option	Finish
ASD-LDS	X	X	XX	XX	XX	XX
LED Disk Light	6 = 6 inch	N = Non-Dimmable	15 = 15 W	CC = 2,700/3,000/3,500/4,000/5,000 K	MS = Motion Sensor	WH = White

LED DISK LIGHT WITH MOTION SENSOR:

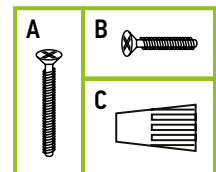
Model	Size	Watts	Voltage	Dimmable	Lumens	CCT	Finish	Dimensions (DxH)
ASD-LDS-6N15CC-MS-WH	6"	15 W	120 V	No	1,100 lm	2,700/3,000/3,500/4,000/5,000 K	White	7 3/4" x 2 9/16"

PRODUCT SPECIFICATIONS:

Construction & Materials		Electrical System	
Housing	Iron	Input Voltage	120 V
Lens	Acrylic	Max input current	0.15 A
Finish Color	White	Inrush current (Action time)	0.2 A (0.01 S)
Weight	1 lb (0.4 kg)	AC input range	min 100 V max 135 V
Environmental System		Off State Power	0 W
Work Environment	Suitable for Wet Locations	Power Consumption	15 W
Operating Temperature	-4°F to 104°F (-20°C to 40°C)	Power Factor	> 0.9
L-70 Life	> 50,000 hrs		
Optical System			
Luminous Flux	1,100 lm		
Color Temperature	2,700/3,000/3,500/4,000/5,000 K		
CRI	> 90		
Regular and Voluntary Certifications			
5-year limited warranty			
cULus certified			
Energy Star listed			

PACKAGE CONTENTS:

Description	Q-ty
LED Disk Light with Motion Sensor	1
1-1/2 in. machine screws (A)	2
1/2 in. machine screws (B)	2
Wire Nuts (C)	3
Box	1
Cut sheet	2



For most up-to-date spec sheets please refer to asd-lighting.com

ASD[®] LED DISK LIGHT

WITH MOTION SENSOR

INSTALLATION GUIDE

IMPORTANT SAFETY INFORMATION:

Please read all the instructions below before installation.

- ▶ Make sure that the supply voltage corresponds to the rated product voltage.
- ▶ The product must be installed by a qualified electrician in accordance with the National Electrical Code and corresponding local codes.
- ▶ If the product is damaged, do not use it.

⚠ WARNING

RISK OF PERSONAL INJURY – READ and follow all WARNINGS and installation instructions.

Keep or give to the owner for future reference.

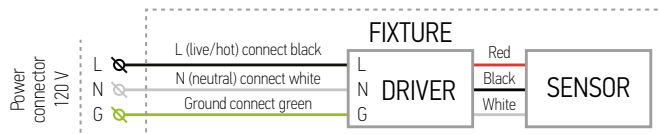
Risk of cuts: Wear gloves to prevent cuts or abrasions when removing from carton, handling, installing, and maintaining this product.

Risk of electric shock: This product must be installed in accordance with the applicable installation code by a person familiar with the construction and operation of the product and the hazards involved.

Risk of Fire: Minimum 194°F supply conductors. Consult a qualified electrician to ensure correct branch circuit conductor.

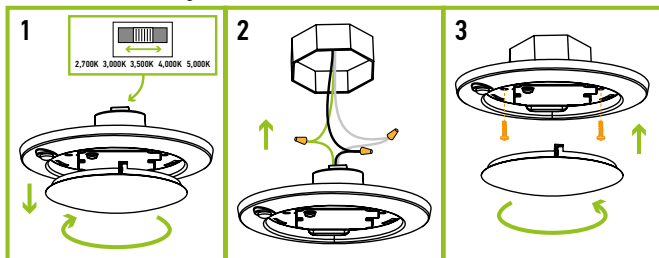
ASD[®] assumes no responsibility for claims arising out of improper or careless installation or handling of this product.

ELECTRICAL SCHEMATIC DIAGRAM:



INSTALLATION STEPS:

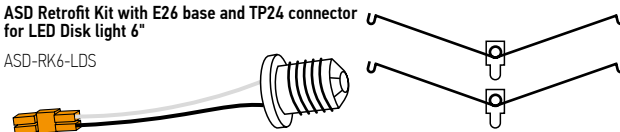
1. Remove the lens by turning it counter clockwise. Choose needed color temperature by adjusting switch position.
2. Connect the wires: Black to Black, White to White, Green to Green. Secure the connection with wire nuts. Tuck all the wires into the outlet box.
3. Align two holes in the fixture with outlet box. Use screws to attach one to another. Do not over tighten. Place the lens back and turn it clockwise to fix.



ACCESSORIES (sold separately):

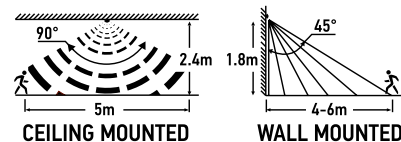
ASD Retrofit Kit with E26 base and TP24 connector for LED Disk light 6"

ASD-RK6-LDS



MOTION SENSOR FUNCTIONS:

- The light is ON for 12 sec., after you turn ON the power.
- The light is ON when movement is detected.
- After last detection the lights remains ON for 5 min.
- After stand-by period, light turns OFF automatically



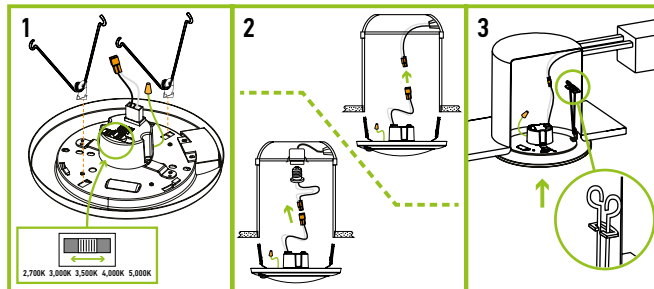
⚠ RF interference may affect the operation of this sensor

RETROFIT KIT INSTALLATION

ASD-RK6-LDS

sold separately:

1. Place the spring clip arms into the rectangular slots and twist them into a locked position. The spring clips must be adjusted depending on the can size. Choose needed color temperature by adjusting switch position.
2. Link TP24 connector with the fixture wires. Connect the E26 Adapter and thread it into the socket of the recessed can or connect it with TP24 of the recessed can directly.
3. Squeeze the two sets of spring clip arms up towards each other. Carefully route wires into the can, and hook both sets of spring clip arms into the arm hooks on the inside wall of the can. Release spring clip arms and gently push the Disk Light up into the can until flush against the ceiling surface.



ORDERING INFORMATION

LED DISK LIGHT WITH MOTION SENSOR:

Model	UPC	Pcs in Middle Box	Middle Box Size	Middle Box Weight	GTIN 14 Middle box	Pcs per Carton	Carton Size	Carton Weight	GTIN 14 Carton
ASD-LDS-6N15CC-MS-WH	810050733786	6	15.4" x 8.3" x 7.9"	6.2 lb	10810050733783	24	17.3" x 15.9" x 16.5"	25.6 lb	20810050733780

ACCESSORIES:

Model	Name	Weight	UPC
ASD-RK6-LDS	Retrofit Kit with E26 base and TP24 connector for LED Disk light 6"	0.1 lb	810050730112

Model	Pcs in Middle Box	Middle Box Size	Middle Box Weight	GTIN 14 Middle box	Pcs per Carton	Carton Size	Carton Weight	GTIN 14 Carton
ASD-RK6-LDS	12	7.5" x 3.5" x 7.5"	1.2 lb	10810050730119	48	14.6" x 8.1" x 8.1"	5.5 lb	20810050730116

For most up-to-date spec sheets please refer to asd-lighting.com

ASD LIGHTING CORP

E-mail: orders@asd-lighting.com | Web site: www.asd-lighting.com

