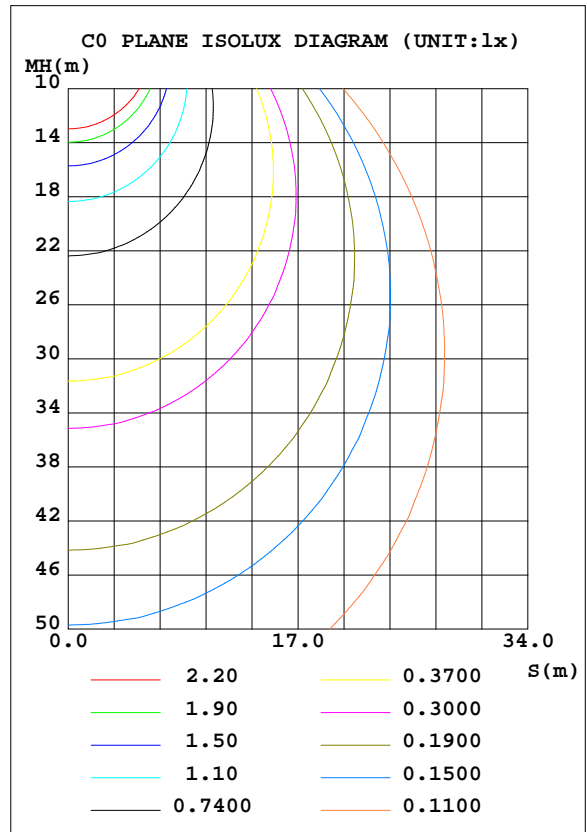
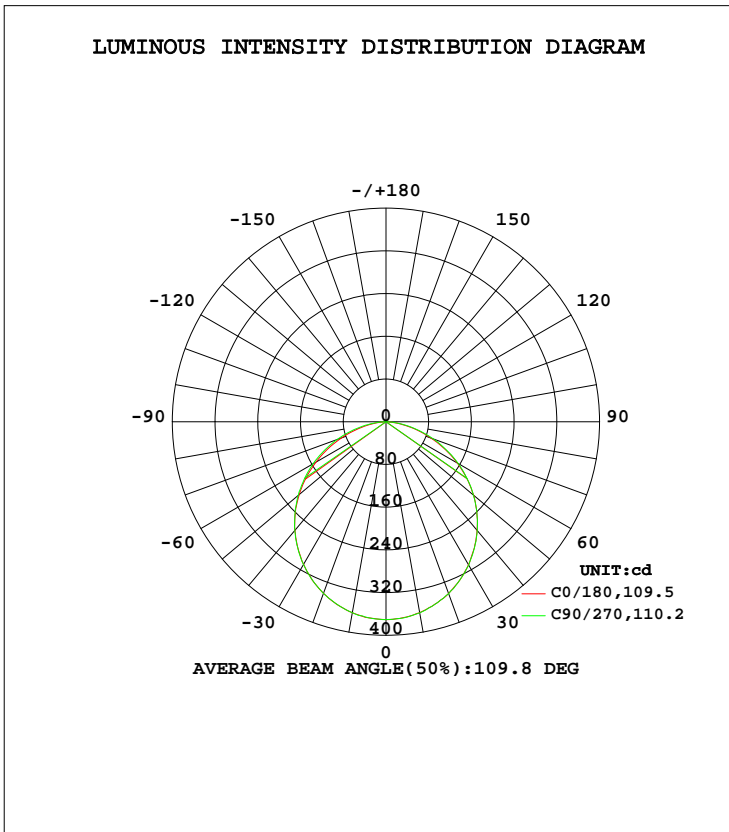


LUMINAIRE PHOTOMETRIC TEST REPORT

Test:U:120.0V I:0.1357A P:15.28W PF:0.9383 Lamp Flux:1021.02x1 lm		
NAME: LED luminaire	TYPE:N/A	WEIGHT:N/A
SPEC.:ASD-MPS-7D15CC-BK 5000K	DIM.: N/A	SERIAL No.:N/A
MFR.: ASD LIGHTING CORP	SUR.:N/A	Shielding Angle:N/A

DATA OF LAMP		PHOTOMETRIC DATA Eff: 66.82 lm/W			
MODEL	PSZ2S230215006-10	I <sub>max</sub> (cd)	371.0	S/MH(C0/180)	1.24
NOMINAL POWER(W)		LOR(%)	100.0	S/MH(C90/270)	1.24
RATED VOLTAGE(V)	120	TOTAL FLUX(lm)	1021.0	η UP, DN(C0-180)	0.1,50.1
NOMINAL FLUX(lm)	1021.02	CIE CLASS	DIRECT	η UP, DN(C180-360)	0.0,49.8
LAMPS INSIDE	1	η up(%)	0.1	CIBSE SHR NOM	1.25
TEST VOLTAGE(V)	120	η down(%)	99.9	CIBSE SHR MAX	1.35



C Range: 0 - 360DEG  
 C Interval: 22.5DEG  
 Test Speed: HIGH  
 Temperature:24.6DEG  
 Operators:Evan  
 Test Date:2023-02-21

γ Range: 0 - 180DEG  
 γ Interval: 1.0DEG  
 Test System:EVERFINE GO-R5000\_V2 SYSTEM V2.0.351  
 Humidity:51%  
 Test Distance:2.532m [K=1.0000]  
 Remarks:

ZONAL FLUX DIAGRAM

ZONAL FLUX DIAGRAM:

γ	C0	C45	C90	C135	C180	C225	C270	C315	γ	Φ zone	Φ total	%lum, lamp
10	363.0	362.7	363.1	362.9	363.1	363.6	363.3	362.9	0- 10	35.01	35.01	3.43,3.43
20	341.9	341.5	342.2	341.7	342.2	342.5	342.8	341.5	10- 20	99.93	134.9	13.2,13.2
30	308.5	308.3	309.0	308.4	309.1	309.8	310.0	307.6	20- 30	150.6	285.5	28,28
40	265.3	264.9	265.8	265.3	265.6	266.1	266.1	263.6	30- 40	180.2	465.8	45.6,45.6
50	212.2	213.5	214.4	214.6	214.4	214.1	213.9	211.9	40- 50	185.4	651.2	63.8,63.8
60	151.8	155.1	157.5	157.7	154.2	156.0	155.8	153.1	50- 60	165.3	816.5	80,80
70	88.74	92.74	97.42	95.58	90.33	92.27	94.14	89.50	60- 70	122.6	939.1	92,92
80	30.74	34.17	39.67	36.70	32.81	33.98	36.82	31.71	70- 80	66.35	1005	98.5,98.5
90	0.0636	0.0685	0.1139	0.0749	0.0158	0.0186	0.0179	0.0192	80- 90	14.46	1020	99.9,99.9
100	0.0824	0.1026	0.0910	0.1055	0.0300	0.0424	0.0357	0.0502	90-100	0.0560	1020	99.9,99.9
110	0.1074	0.1173	0.1096	0.1250	0.0641	0.0710	0.0612	0.0702	100-110	0.0816	1020	99.9,99.9
120	0.1360	0.1482	0.1441	0.1498	0.0926	0.0982	0.0962	0.0918	110-120	0.1036	1020	99.9,99.9
130	0.2029	0.2167	0.2201	0.2278	0.1508	0.1421	0.1353	0.1304	120-130	0.1320	1020	99.9,99.9
140	0.3244	0.3364	0.3540	0.3387	0.1943	0.1942	0.1818	0.1852	130-140	0.1663	1020	99.9,99.9
150	0.4582	0.4763	0.4964	0.4943	0.2282	0.2227	0.2286	0.2210	140-150	0.1958	1021	100,100
160	0.5621	0.5994	0.6059	0.5743	0.2754	0.2677	0.2830	0.2703	150-160	0.1827	1021	100,100
170	0.5521	0.5330	0.5547	0.5297	0.3409	0.3187	0.3300	0.3433	160-170	0.1254	1021	100,100
180	0.4210	0.4047	0.3949	0.4330	0.4363	0.4222	0.3994	0.4125	170-180	0.0417	1021	100,100
DEG	LUMINOUS INTENSITY:cd									UNIT:lm		

Conical surface Flux(90deg): 559.41 lm

%lum = 54.8%  
%lamp = 54.8%

Conical surface Flux(120deg): 816.5 lm

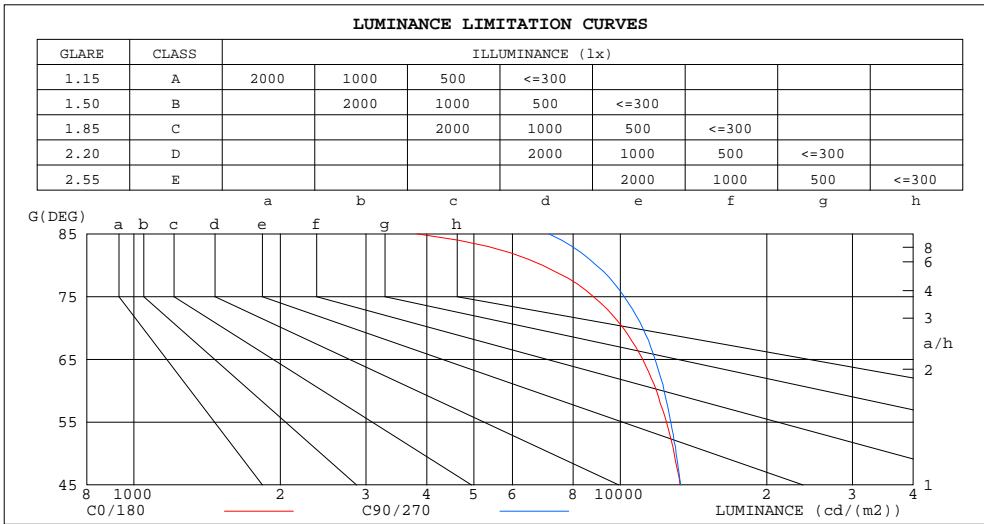
%lum = 80.0%  
%lamp = 80.0%

C Range: 0 - 360DEG  
C Interval: 22.5DEG  
Test Speed: HIGH  
Temperature:24.6DEG  
Operators:Evan  
Test Date:2023-02-21

γ Range: 0 - 180DEG  
γ Interval: 1.0DEG  
Test System:EVERFINE GO-R5000\_V2 SYSTEM V2.0.351  
Humidity:51%  
Test Distance:2.532m [K=1.0000]  
Remarks:

LUMINANCE LIMITATION CURVES

Test:U:120.0V I:0.1357A P:15.28W PF:0.9383 Lamp Flux:1021.02x1 lm		
NAME: LED luminaire	TYPE:N/A	WEIGHT:N/A
SPEC.:ASD-MPS-7D15CC-BK 5000K	DIM.: N/A	SERIAL No.:N/A
MFR.: ASD LIGHTING CORP	SUR.:N/A	Shielding Angle:N/A



LUMINANCE cd/(m2)		
G(DEG)	C0/180	C90/270
85	3820	7129
80	6917	8920
75	8800	10187
70	10138	11120
65	11119	11786
60	11867	12298
55	12440	12701
50	12899	13021
45	13268	13308

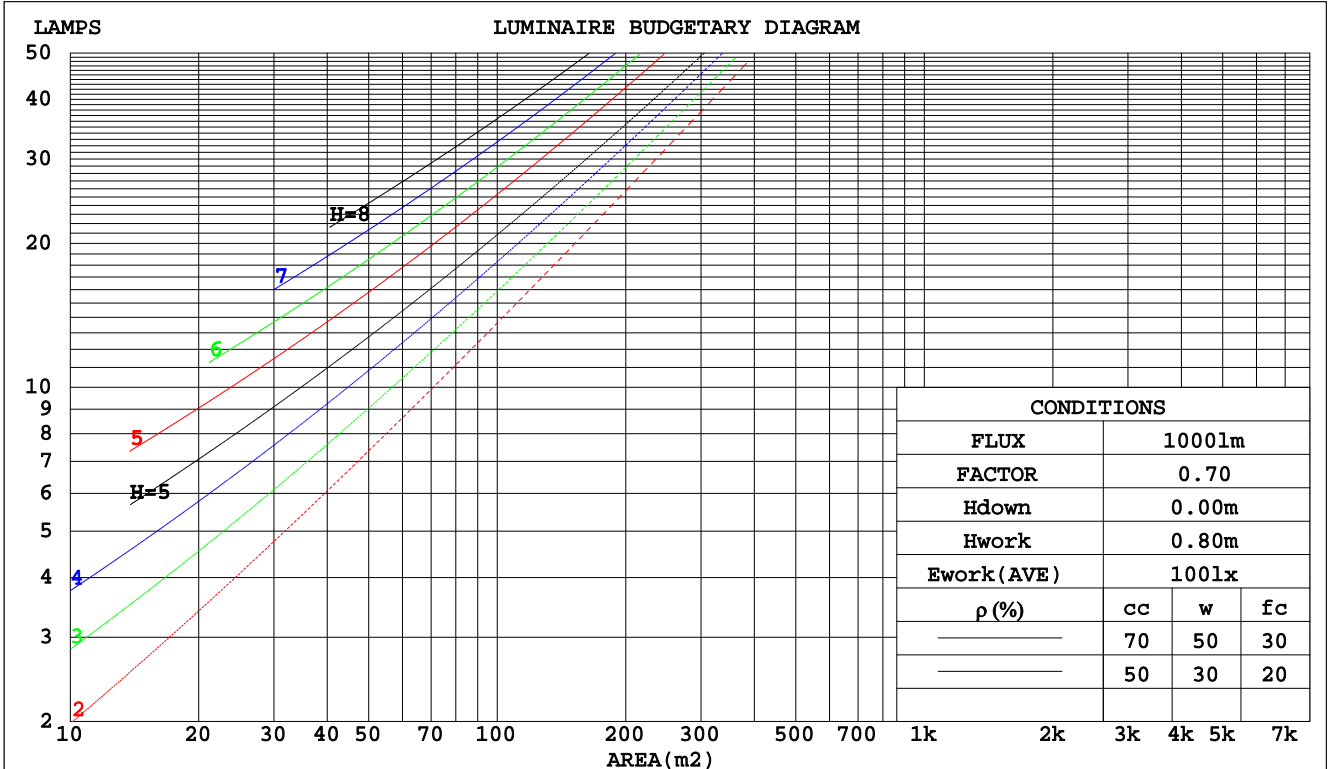
C Range: 0 - 360DEG  
 C Interval: 22.5DEG  
 Test Speed: HIGH  
 Temperature:24.6DEG  
 Operators:Evan  
 Test Date:2023-02-21

$\gamma$  Range: 0 - 180DEG  
 $\gamma$  Interval: 1.0DEG  
 Test System:EVERFINE GO-R5000\_V2 SYSTEM V2.0.351  
 Humidity:51%  
 Test Distance:2.532m [K=1.0000]  
 Remarks:

CU AND LUMINAIRE BUDGETARY ESTIMATE DIAGRAM

Test:U:120.0V I:0.1357A P:15.28W PF:0.9383 Lamp Flux:1021.02x1 lm		
NAME: LED luminaire	TYPE:N/A	WEIGHT:N/A
SPEC.:ASD-MPS-7D15CC-BK 5000K	DIM.: N/A	SERIAL No.:N/A
MFR.: ASD LIGHTING CORP	SUR.:N/A	Shielding Angle:N/A

pcc	80%			70%			50%			30%			10%			0
	50%	30%	10%	50%	30%	10%	50%	30%	10%	50%	30%	10%	50%	30%	10%	0
pw																0
pfc	20%			20%			20%			20%			20%			0
RCR	RCR:Room Cavity Ratio      Coefficients of Utilization(CU)															
0.0	1.19	1.19	1.19	1.16	1.16	1.16	1.11	1.11	1.11	1.06	1.06	1.06	1.02	1.02	1.02	.00
1.0	1.04	1.00	.96	1.02	.98	.95	.98	.95	.92	.94	.91	.89	.90	.88	.86	.84
2.0	.91	.84	.79	.89	.83	.78	.86	.80	.76	.82	.78	.74	.79	.76	.72	.70
3.0	.80	.72	.65	.78	.71	.65	.75	.69	.64	.73	.67	.63	.70	.65	.61	.59
4.0	.71	.62	.55	.70	.61	.55	.67	.60	.54	.65	.59	.54	.62	.57	.53	.51
5.0	.63	.54	.48	.62	.54	.48	.60	.53	.47	.58	.52	.46	.56	.51	.46	.44
6.0	.57	.48	.42	.56	.48	.42	.54	.47	.41	.53	.46	.41	.51	.45	.40	.38
7.0	.52	.43	.37	.51	.43	.37	.49	.42	.36	.48	.41	.36	.47	.40	.36	.34
8.0	.47	.39	.33	.47	.38	.33	.45	.38	.33	.44	.37	.32	.43	.37	.32	.30
9.0	.43	.35	.30	.43	.35	.30	.42	.34	.29	.40	.34	.29	.39	.33	.29	.27
10.0	.40	.32	.27	.39	.32	.27	.38	.31	.27	.38	.31	.27	.37	.31	.26	.25



C Range: 0 - 360DEG  
 C Interval: 22.5DEG  
 Test Speed: HIGH  
 Temperature:24.6DEG  
 Operators:Evan  
 Test Date:2023-02-21

γ Range: 0 - 180DEG  
 γ Interval: 1.0DEG  
 Test System:EVERFINE GO-R5000\_V2 SYSTEM V2.0.351  
 Humidity:51%  
 Test Distance:2.532m [K=1.0000]  
 Remarks:

WEC AND CCEC

Test:U:120.0V I:0.1357A P:15.28W PF:0.9383 Lamp Flux:1021.02x1 lm		
NAME: LED luminaire	TYPE:N/A	WEIGHT:N/A
SPEC.:ASD-MPS-7D15CC-BK 5000K	DIM.: N/A	SERIAL No.:N/A
MFR.: ASD LIGHTING CORP	SUR.:N/A	Shielding Angle:N/A

ρcc	80%			70%			50%			30%			10%			0
ρw	50%	30%	10%	50%	30%	10%	50%	30%	10%	50%	30%	10%	50%	30%	10%	0
ρfc	20%			20%			20%			20%			20%			0
RCR	RCR:Room Cavity Ratio						Wall Exitance Coefficients(WEC)									
0.0																
1.0	.301	.171	.054	.294	.168	.053	.281	.161	.051	.269	.155	.050	.257	.149	.048	
2.0	.286	.157	.048	.280	.154	.047	.268	.149	.046	.257	.144	.045	.247	.140	.044	
3.0	.266	.141	.042	.260	.139	.042	.250	.135	.041	.240	.132	.040	.232	.128	.040	
4.0	.246	.128	.038	.241	.126	.037	.232	.123	.037	.223	.120	.036	.216	.117	.036	
5.0	.228	.116	.034	.224	.115	.033	.215	.112	.033	.208	.110	.033	.201	.107	.032	
6.0	.212	.106	.030	.208	.105	.030	.201	.103	.030	.194	.101	.030	.187	.099	.029	
7.0	.197	.098	.028	.194	.097	.028	.187	.095	.027	.181	.093	.027	.176	.091	.027	
8.0	.184	.090	.025	.181	.089	.025	.176	.088	.025	.170	.086	.025	.165	.085	.025	
9.0	.173	.084	.023	.170	.083	.023	.165	.082	.023	.160	.080	.023	.155	.079	.023	
10.0	.163	.078	.022	.160	.077	.022	.156	.076	.021	.151	.075	.021	.147	.074	.021	

ρcc	80%			70%			50%			30%			10%			0
ρw	50%	30%	10%	50%	30%	10%	50%	30%	10%	50%	30%	10%	50%	30%	10%	0
ρfc	20%			20%			20%			20%			20%			0
RCR	RCR:Room Cavity Ratio						Ceiling Cavity Exitance Coefficients(CCEC)									
0.0	.191	.191	.191	.163	.163	.163	.112	.112	.112	.064	.064	.064	.020	.020	.020	
1.0	.181	.157	.136	.154	.135	.117	.106	.093	.081	.061	.054	.047	.019	.017	.015	
2.0	.172	.133	.100	.148	.114	.086	.101	.079	.060	.058	.046	.035	.019	.015	.011	
3.0	.165	.115	.076	.141	.099	.066	.097	.069	.046	.056	.040	.027	.018	.013	.009	
4.0	.157	.102	.060	.135	.088	.052	.093	.061	.036	.054	.036	.022	.017	.012	.007	
5.0	.150	.091	.048	.128	.079	.042	.088	.055	.030	.051	.032	.018	.017	.011	.006	
6.0	.142	.083	.040	.122	.072	.035	.084	.050	.025	.049	.030	.015	.016	.010	.005	
7.0	.136	.076	.034	.117	.066	.030	.081	.046	.021	.047	.027	.013	.015	.009	.004	
8.0	.129	.070	.030	.111	.061	.026	.077	.043	.018	.045	.025	.011	.014	.008	.004	
9.0	.123	.065	.026	.106	.057	.023	.074	.040	.016	.043	.024	.010	.014	.008	.003	
10.0	.118	.061	.023	.101	.053	.020	.070	.037	.014	.041	.022	.009	.013	.007	.003	

C Range: 0 - 360DEG  
 C Interval: 22.5DEG  
 Test Speed: HIGH  
 Temperature:24.6DEG  
 Operators:Evan  
 Test Date:2023-02-21

γ Range: 0 - 180DEG  
 γ Interval: 1.0DEG  
 Test System:EVERFINE GO-R5000\_V2 SYSTEM V2.0.351  
 Humidity:51%  
 Test Distance:2.532m [K=1.0000]  
 Remarks:

UGR(Unified Glare Rating) Table

Test:U:120.0V I:0.1357A P:15.28W PF:0.9383 Lamp Flux:1021.02x1 lm										
NAME: LED luminaire					TYPE:N/A			WEIGHT:N/A		
SPEC.:ASD-MPS-7D15CC-BK 5000K					DIM.: N/A			SERIAL No.:N/A		
MFR.: ASD LIGHTING CORP					SUR.:N/A			Shielding Angle:N/A		
ceiling/cavity	0.7	0.7	0.5	0.5	0.3	0.7	0.7	0.5	0.5	0.3
walls	0.5	0.3	0.5	0.3	0.3	0.5	0.3	0.5	0.3	0.3
working plane	0.2	0.2	0.2	0.2	0.2	0.2	0.2	0.2	0.2	0.2
Room dimensions	Viewed crosswise					Viewed endwise				
x = 2H y = 2H	21.6	23.1	21.8	23.3	23.5	21.7	23.2	22.0	23.4	23.6
3H	22.9	24.3	23.2	24.6	24.8	23.2	24.6	23.5	24.8	25.1
4H	23.4	24.7	23.7	25.0	25.3	23.8	25.1	24.1	25.4	25.6
6H	23.7	24.9	24.0	25.2	25.5	24.2	25.4	24.5	25.7	26.0
8H	23.8	25.0	24.1	25.2	25.5	24.3	25.5	24.6	25.8	26.1
12H	23.7	24.9	24.1	25.2	25.5	24.4	25.5	24.7	25.8	26.1
4H 2H	22.2	23.5	22.5	23.8	24.0	22.3	23.6	22.6	23.9	24.1
3H	23.7	24.9	24.1	25.2	25.5	24.0	25.1	24.3	25.4	25.7
4H	24.3	25.4	24.7	25.7	26.0	24.7	25.7	25.0	26.0	26.4
6H	24.7	25.6	25.1	26.0	26.3	25.2	26.1	25.6	26.5	26.8
8H	24.8	25.6	25.2	26.0	26.4	25.3	26.2	25.7	26.6	27.0
12H	24.8	25.6	25.2	26.0	26.4	25.4	26.2	25.9	26.6	27.0
8H 4H	24.5	25.4	25.0	25.8	26.2	24.9	25.7	25.3	26.1	26.5
6H	25.0	25.8	25.5	26.2	26.6	25.5	26.2	25.9	26.6	27.1
8H	25.2	25.8	25.6	26.3	26.7	25.7	26.4	26.2	26.8	27.3
12H	25.2	25.8	25.7	26.2	26.7	25.9	26.4	26.4	26.9	27.4
12H 4H	24.5	25.3	25.0	25.7	26.1	24.9	25.7	25.3	26.0	26.5
6H	25.1	25.7	25.5	26.1	26.6	25.5	26.2	26.0	26.6	27.0
8H	25.3	25.8	25.7	26.3	26.7	25.8	26.3	26.3	26.8	27.3
Variations with the observer position at spacings:										
S = 1.0H	+ 0.2 / - 0.2					+ 0.2 / - 0.2				
1.5H	+ 0.2 / - 0.3					+ 0.2 / - 0.3				
2.0H	+ 0.2 / - 0.3					+ 0.2 / - 0.3				

CIE Pub.117 Corrected 1021 lm Total Lamp Luminous Flux.(8log(F/F0) = 0.1)

C Range: 0 - 360DEG  
 C Interval: 22.5DEG  
 Test Speed: HIGH  
 Temperature:24.6DEG  
 Operators:Evan  
 Test Date:2023-02-21

γ Range: 0 - 180DEG  
 γ Interval: 1.0DEG  
 Test System:EVERFINE GO-R5000\_V2 SYSTEM V2.0.351  
 Humidity:51%  
 Test Distance:2.532m [K=1.0000]  
 Remarks:

UTILIZATION FACTORS TABLE

Test:U:120.0V I:0.1357A P:15.28W PF:0.9383 Lamp Flux:1021.02x1 lm		
NAME: LED luminaire	TYPE:N/A	WEIGHT:N/A
SPEC.:ASD-MPS-7D15CC-BK 5000K	DIM.: N/A	SERIAL No.:N/A
MFR.: ASD LIGHTING CORP	SUR.:N/A	Shielding Angle:N/A

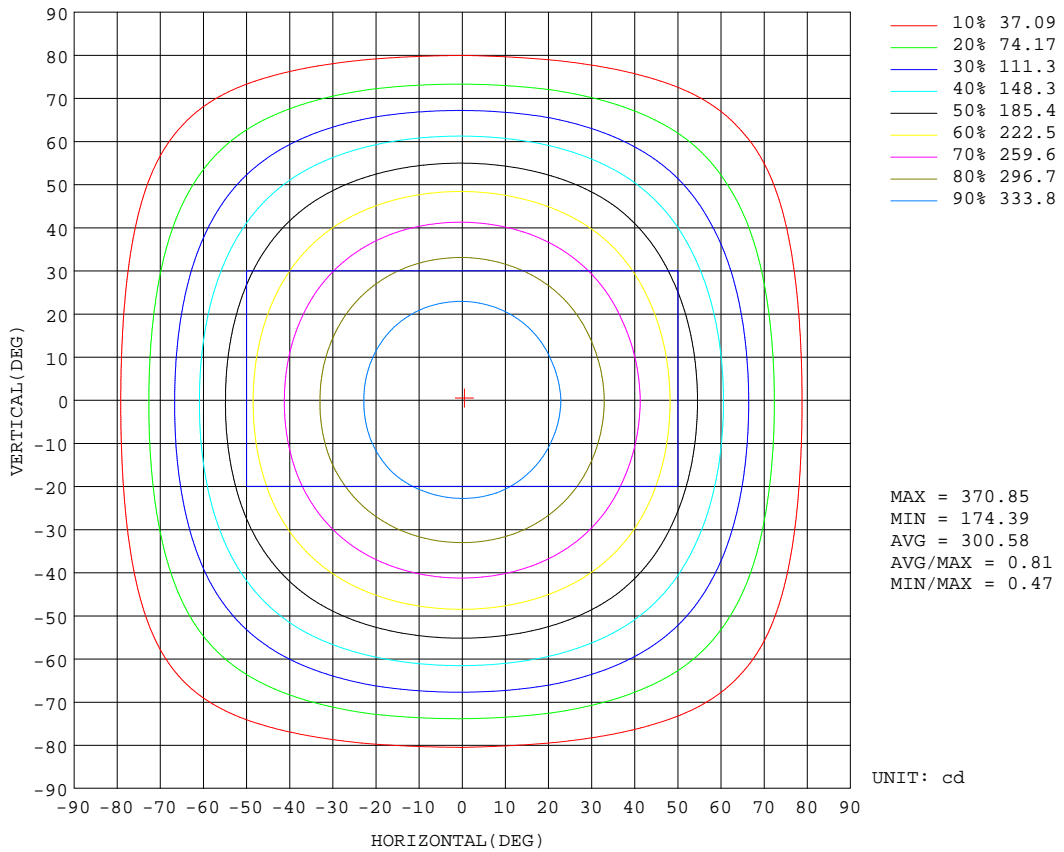
REFLECTANCE										
Ceiling	0.8	0.8	0.8	0.7	0.7	0.7	0.5	0.5	0.5	0
Walls	0.7	0.5	0.3	0.7	0.5	0.3	0.7	0.5	0.3	0
Working plane	0.2	0.2	0.2	0.2	0.2	0.2	0.2	0.2	0.2	0
ROOM INDEX	UTILIZATION FACTORS(PERCENT) $k(RI) \times RCR = 5$									
k = 0.60	58	47	40	57	46	39	56	46	39	33
0.80	68	57	49	67	56	49	65	55	49	42
1.00	77	66	58	75	65	58	73	66	58	51
1.25	84	73	66	82	73	66	80	71	65	58
1.50	89	79	72	87	78	72	84	76	70	63
2.00	95	87	81	94	86	80	90	84	78	71
2.50	99	92	86	97	90	85	93	88	83	75
3.00	103	96	91	100	94	89	96	91	87	79
4.00	107	101	96	104	99	95	100	96	92	84
5.00	109	104	100	107	102	99	102	99	96	87
ROOM INDEX	UF(total)									Direct
According to DIN EN 13032-2 2004			Suspended				SHRNOM = 1.25			

C Range: 0 - 360DEG  
 C Interval: 22.5DEG  
 Test Speed: HIGH  
 Temperature:24.6DEG  
 Operators:Evan  
 Test Date:2023-02-21

$\gamma$  Range: 0 - 180DEG  
 $\gamma$  Interval: 1.0DEG  
 Test System:EVERFINE GO-R5000\_V2 SYSTEM V2.0.351  
 Humidity:51%  
 Test Distance:2.532m [K=1.0000]  
 Remarks:

**ISOCANDELA DIAGRAM**

Test:U:120.0V I:0.1357A P:15.28W PF:0.9383 Lamp Flux:1021.02x1 lm		
NAME: LED luminaire	TYPE:N/A	WEIGHT:N/A
SPEC.:ASD-MPS-7D15CC-BK 5000K	DIM.: N/A	SERIAL No.:N/A
MFR.: ASD LIGHTING CORP	SUR.:N/A	Shielding Angle:N/A



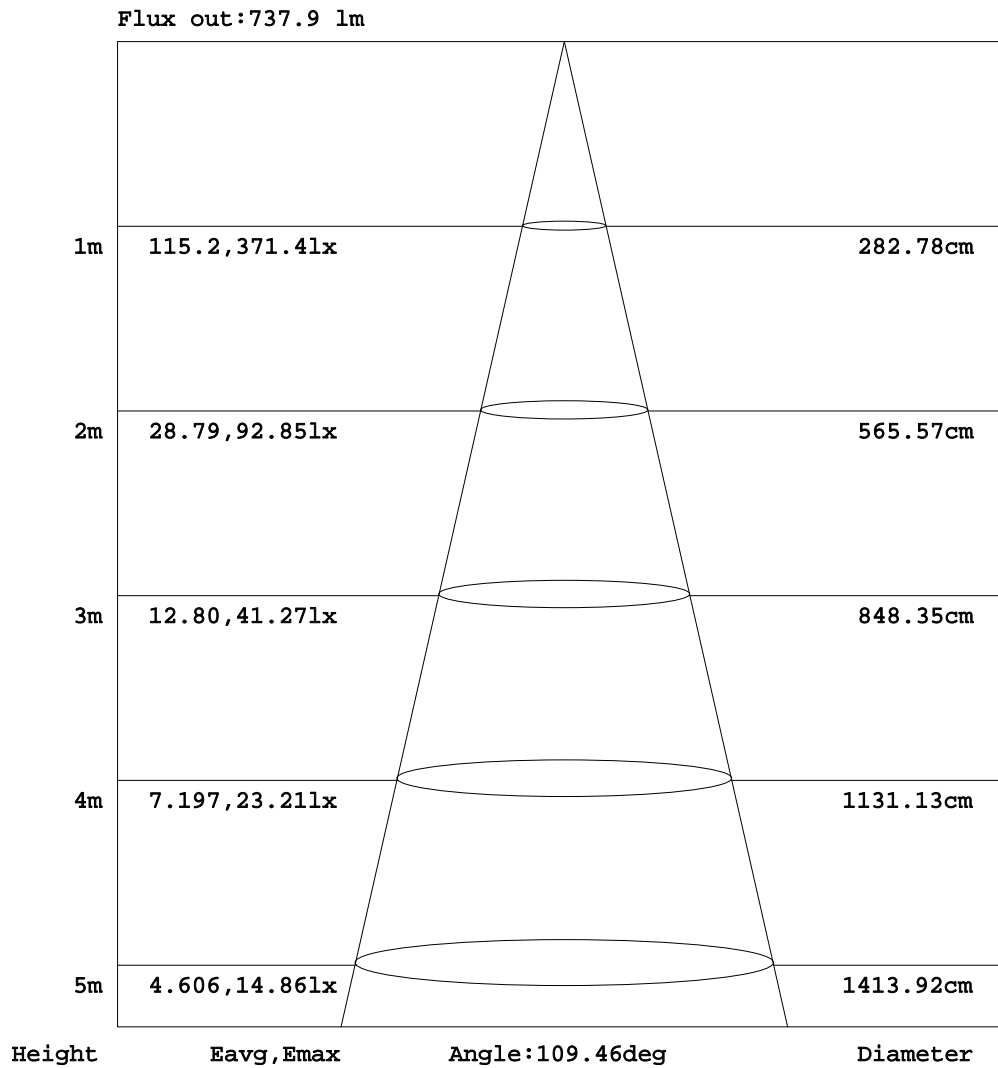
C Range: 0 - 360DEG  
 C Interval: 22.5DEG  
 Test Speed: HIGH  
 Temperature:24.6DEG  
 Operators:Evan  
 Test Date:2023-02-21

γ Range: 0 - 180DEG  
 γ Interval: 1.0DEG  
 Test System:EVERFINE GO-R5000\_V2 SYSTEM V2.0.351  
 Humidity:51%  
 Test Distance:2.532m [K=1.0000]  
 Remarks:



AAI Figure

Test:U:120.0V I:0.1357A P:15.28W PF:0.9383 Lamp Flux:1021.02x1 lm		
NAME: LED luminaire	TYPE:N/A	WEIGHT:N/A
SPEC.:ASD-MPS-7D15CC-BK 5000K	DIM.: N/A	SERIAL No.:N/A
MFR.:ASD LIGHTING CORP	SUR.:N/A	Shielding Angle:N/A



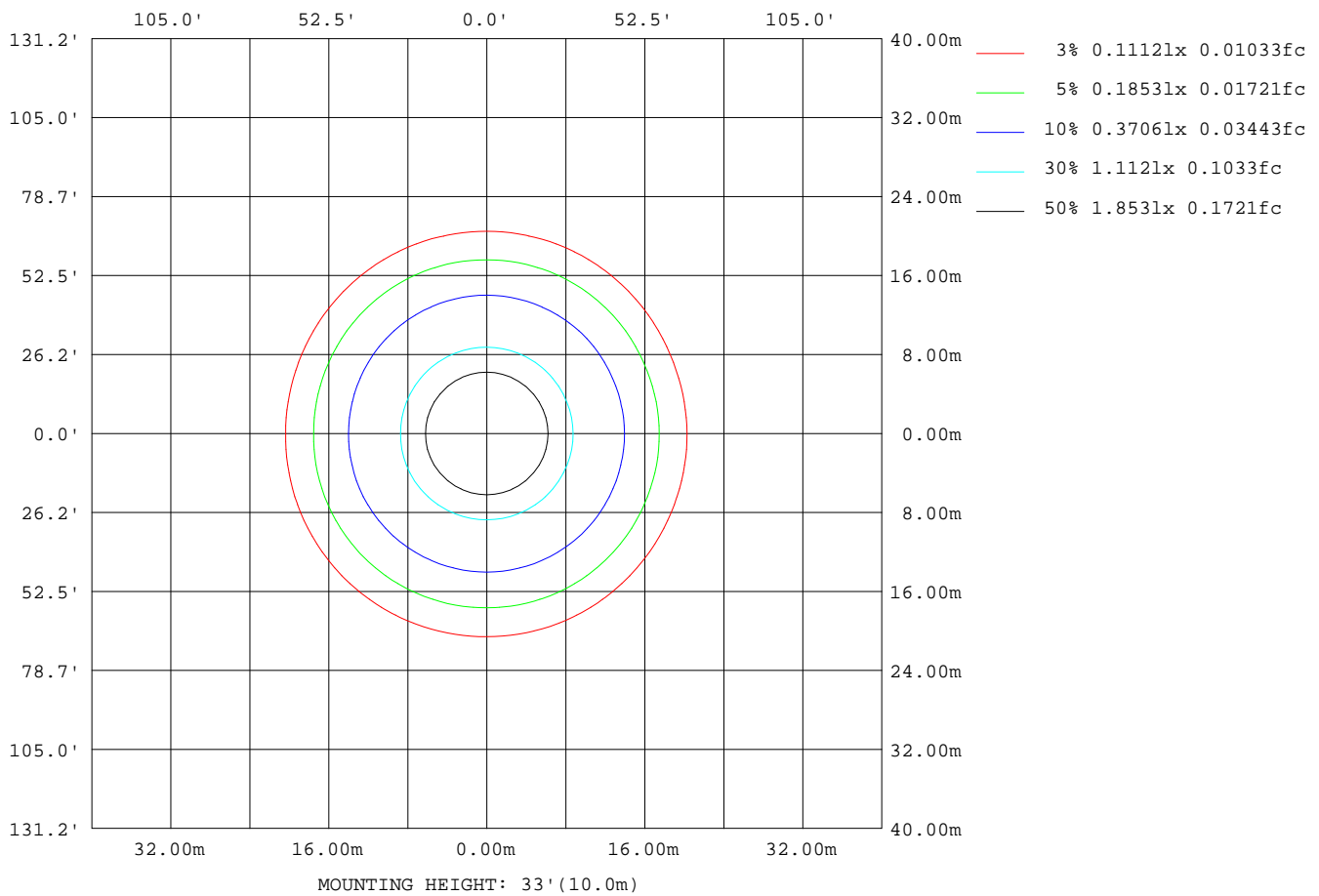
Note:The Curves indicate the illuminated area and the average illumination when the luminaire is at different distance.

C Range: 0 - 360DEG  
 C Interval: 22.5DEG  
 Test Speed: HIGH  
 Temperature:24.6DEG  
 Operators:Evan  
 Test Date:2023-02-21

γ Range: 0 - 180DEG  
 γ Interval: 1.0DEG  
 Test System:EVERFINE GO-R5000\_V2 SYSTEM V2.0.351  
 Humidity:51%  
 Test Distance:2.532m [K=1.0000]  
 Remarks:

ISOLUX DIAGRAM

Test:U:120.0V I:0.1357A P:15.28W PF:0.9383 Lamp Flux:1021.02x1 lm		
NAME: LED luminaire	TYPE:N/A	WEIGHT:N/A
SPEC.:ASD-MPS-7D15CC-BK 5000K	DIM.: N/A	SERIAL No.:N/A
MFR.: ASD LIGHTING CORP	SUR.:N/A	Shielding Angle:N/A



C Range: 0 - 360DEG  
 C Interval: 22.5DEG  
 Test Speed: HIGH  
 Temperature:24.6DEG  
 Operators:Evan  
 Test Date:2023-02-21

γ Range: 0 - 180DEG  
 γ Interval: 1.0DEG  
 Test System:EVERFINE GO-R5000\_V2 SYSTEM V2.0.351  
 Humidity:51%  
 Test Distance:2.532m [K=1.0000]  
 Remarks:

**LED Avg.L Report**

Test:U:120.0V I:0.1357A P:15.28W PF:0.9383 Lamp Flux:1021.02x1 lm		
NAME: LED luminaire	TYPE:N/A	WEIGHT:N/A
SPEC.:ASD-MPS-7D15CC-BK 5000K	DIM.: N/A	SERIAL No.:N/A
MFR.: ASD LIGHTING CORP	SUR.:N/A	Shielding Angle:N/A

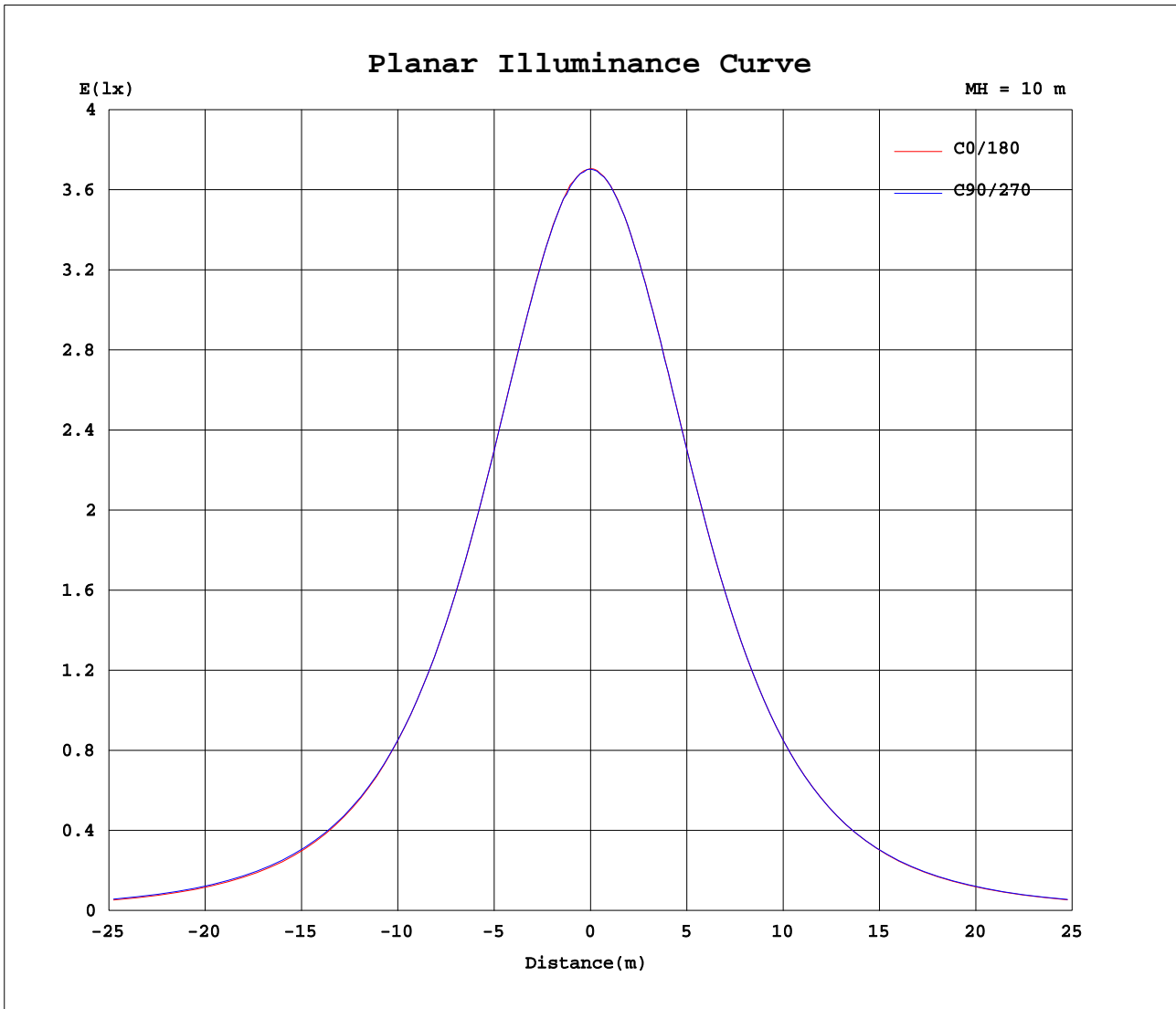
AvgL	cd/m2
L_0~180(65)av	11197
L_0~180(75)av	8940
L_0~180(85)av	4235
L_90~270(65)av	11664
L_90~270(75)av	9948
L_90~270(85)av	6603
L_45(65)av	11456
L_45(75)av	9389
L_45(85)av	4984

Standard: GB/T 29293-2012

C Range: 0 - 360DEG  
 C Interval: 22.5DEG  
 Test Speed: HIGH  
 Temperature:24.6DEG  
 Operators:Evan  
 Test Date:2023-02-21

γ Range: 0 - 180DEG  
 γ Interval: 1.0DEG  
 Test System:EVERFINE GO-R5000\_V2 SYSTEM V2.0.351  
 Humidity:51%  
 Test Distance:2.532m [K=1.0000]  
 Remarks:

Planar Illuminance Curve



C Range: 0 - 360DEG  
 C Interval: 22.5DEG  
 Test Speed: HIGH  
 Temperature: 24.6DEG  
 Operators: Evan  
 Test Date: 2023-02-21

$\gamma$  Range: 0 - 180DEG  
 $\gamma$  Interval: 1.0DEG  
 Test System: EVERFINE GO-R5000\_V2 SYSTEM V2.0.351  
 Humidity: 51%  
 Test Distance: 2.532m [K=1.0000]  
 Remarks:

LUMINOUS DISTRIBUTION INTENSITY DATA

Test:U:120.0V I:0.1357A P:15.28W PF:0.9383 Lamp Flux:1021.02x1 lm		
NAME: LED luminaire	TYPE:N/A	WEIGHT:N/A
SPEC.:ASD-MPS-7D15CC-BK 5000K	DIM.: N/A	SERIAL No.:N/A
MFR.:ASD LIGHTING CORP	SUR.:N/A	Shielding Angle:N/A

Table--1

UNIT: cd

C( DEG) γ (DEG)	0	22.5	45	67.5	90	112.5	135	157.5	180	202.5	225	247.5	270	292.5	315	337.5			
0	370	370	370	370	370	370	370	370	370	370	370	370	370	370	370	370			
5	368	369	369	369	368	369	368	369	368	369	369	369	369	369	368	369			
10	363	363	363	364	363	363	363	363	363	364	364	364	363	363	363	363			
15	354	354	353	355	354	355	354	355	354	355	354	355	354	355	353	354			
20	342	342	342	343	342	342	342	342	342	342	342	343	343	342	342	342			
25	327	327	326	327	327	327	327	328	327	328	327	328	327	327	325	326			
30	308	309	308	309	309	309	308	309	309	309	310	310	310	309	308	308			
35	288	288	287	288	288	289	288	290	288	289	289	290	289	288	286	286			
40	265	265	265	266	266	266	265	266	266	266	266	266	266	265	264	264			
45	240	240	240	241	241	241	241	242	240	241	241	241	241	240	239	238			
50	212	213	213	214	214	215	215	215	214	214	214	214	214	213	212	211			
55	183	183	185	186	187	187	187	187	185	186	186	186	185	185	184	182			
60	152	153	155	157	158	158	158	156	154	155	156	156	156	155	153	151			
65	120	121	124	127	128	128	127	125	122	122	124	125	125	124	121	118			
70	88.7	89.9	92.7	96.8	97.4	97.9	95.6	93.5	90.3	90.6	92.3	94.7	94.1	93.6	89.5	87.0			
75	58.3	59.6	62.4	66.1	67.5	67.8	65.2	63.1	60.2	60.4	61.9	64.2	64.3	63.0	59.3	57.0			
80	30.7	31.8	34.2	37.7	39.7	39.1	36.7	35.0	32.8	32.9	34.0	36.0	36.8	34.9	31.7	29.8			
85	8.52	9.30	11.0	13.7	15.9	14.9	13.0	11.7	10.4	10.3	11.0	12.5	13.6	11.6	9.49	7.77			
90	0.06	0.07	0.07	0.07	0.11	0.11	0.07	0.09	0.02	0.02	0.02	0.02	0.02	0.02	0.02	0.02			
95	0.07	0.07	0.08	0.08	0.08	0.07	0.07	0.07	0.02	0.02	0.02	0.02	0.02	0.02	0.03	0.02			
100	0.08	0.09	0.10	0.10	0.09	0.10	0.11	0.08	0.03	0.03	0.04	0.04	0.04	0.04	0.05	0.04			
105	0.09	0.10	0.11	0.10	0.10	0.11	0.11	0.10	0.05	0.04	0.05	0.05	0.05	0.05	0.06	0.05			
110	0.11	0.11	0.12	0.11	0.11	0.12	0.12	0.11	0.06	0.06	0.07	0.07	0.06	0.07	0.07	0.06			
115	0.12	0.13	0.13	0.12	0.12	0.13	0.14	0.13	0.08	0.08	0.08	0.08	0.08	0.08	0.08	0.08			
120	0.14	0.15	0.15	0.15	0.14	0.15	0.15	0.15	0.09	0.11	0.10	0.10	0.10	0.09	0.09	0.10			
125	0.17	0.16	0.17	0.18	0.18	0.18	0.18	0.17	0.12	0.12	0.12	0.12	0.11	0.11	0.11	0.12			
130	0.20	0.20	0.22	0.22	0.22	0.23	0.23	0.20	0.15	0.14	0.14	0.14	0.14	0.14	0.13	0.14			
135	0.23	0.25	0.27	0.27	0.28	0.28	0.28	0.26	0.16	0.16	0.17	0.16	0.16	0.16	0.16	0.17			
140	0.32	0.33	0.34	0.35	0.35	0.36	0.34	0.33	0.19	0.17	0.19	0.19	0.18	0.18	0.19	0.18			
145	0.40	0.42	0.41	0.44	0.45	0.45	0.40	0.41	0.21	0.21	0.21	0.22	0.21	0.21	0.20	0.21			
150	0.46	0.49	0.48	0.48	0.50	0.49	0.49	0.48	0.23	0.23	0.22	0.23	0.23	0.23	0.22	0.22			
155	0.51	0.53	0.54	0.57	0.56	0.56	0.55	0.55	0.26	0.25	0.26	0.25	0.26	0.26	0.25	0.27			
160	0.56	0.58	0.60	0.61	0.61	0.60	0.57	0.57	0.28	0.28	0.27	0.26	0.28	0.28	0.27	0.32			
165	0.58	0.56	0.60	0.60	0.62	0.59	0.58	0.54	0.31	0.31	0.28	0.31	0.30	0.31	0.32	0.35			
170	0.55	0.54	0.53	0.54	0.55	0.54	0.53	0.54	0.34	0.33	0.32	0.33	0.33	0.34	0.34	0.37			
175	0.53	0.52	0.51	0.48	0.47	0.48	0.49	0.50	0.38	0.38	0.38	0.37	0.37	0.38	0.39	0.42			
180	0.42	0.42	0.40	0.39	0.39	0.41	0.43	0.45	0.44	0.44	0.42	0.41	0.40	0.40	0.41	0.44			

C Range: 0 - 360DEG  
 C Interval: 22.5DEG  
 Test Speed: HIGH  
 Temperature:24.6DEG  
 Operators:Evan  
 Test Date:2023-02-21

γ Range: 0 - 180DEG  
 γ Interval: 1.0DEG  
 Test System:EVERFINE GO-R5000\_V2 SYSTEM V2.0.351  
 Humidity:51%  
 Test Distance:2.532m [K=1.0000]  
 Remarks: