



LED Round Low Bay Light

Premium Series

► **DESIGN & OPTIONS** - LED ROUND LOW BAYS have a vandal-proof and powder coated die-cast aluminum housing that provides excellent heat dissipation. The impact-resistant clear polycarbonate lens is precision molded for broad coverage. It comes with 120-277V, a 0-10V dimmable driver, a 5000K color temperature, and a BRONZE or WHITE finish. Models with color adjustable options are also available, letting you set it to 3000K, 4000K or 5000K with a simple switch.

► **INSTALLATION** - The fixture can be either surface mounted (directly on surface or with surface mounting bracket, sold separately) or pendant mounted. Refer to installation instructions for detailed steps.

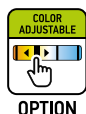
► **APPLICATION** - These LED ROUND LOW BAYS are a durable and efficient lighting solution for parking garages, gas stations, tunnels, train stations, underpasses, storefront soffits, and more. It is Wet location rated and can operate in temperatures between -22+122°F (-30+50°C), allowing it to be utilized in a wide variety of applications and climates.

► **ENERGY SAVINGS & EFFICIENCY** - This fixture provides a lumen output equal to MH/HPS and can cut your electric bill by up to 80% instantly. With a lifespan of 54,000 hours, these fixtures are made to last decades under normal operation! This fixture will save you a significant amount of money in its lifetime.

► **CERTIFICATION & WARRANTY** - Buy with confidence: ASD provides a 5-year warranty along with UL and DLC Premium certifications to guarantee top quality products and safety!

Top US certifications allow participation in rebates; please check the rebate programs available in your state.

Catalog number	
Notes	
Type	



OPTION

PRODUCT LEGEND:

Family	Watts	Dimmable	CCT	Finish	Series
ASD-LRLB	XX	D	XX	XX	PRM
LED Round Low Bay Light	25 = 25 W	Dimmable	50 = 5,000 K	Blank = White	Premium
	55 = 55 W		CC = 3,000/4,000/5,000 K	WH = White	
	75 = 75 W			BZ = Bronze	
	100 = 100 W				

LED ROUND LOW BAY LIGHT FIXTURE:

Model	Watts	Voltage	Dimming	Lumens	CCT	Finish	Dimensions (LxWxH)
ASD-LRLB-25D50-PRM	25 W	120-277 V	1-10 V	3,174 lm	5,000 K	White	10" x 10" x 3 1/8"
ASD-LRLB-100D50-PRM	100 W	120-277 V	1-10 V	12,487 lm	5,000 K	White	11" x 11" x 3 1/8"
ASD-LRLB-25DCC-WH-PRM	25 W	120-277 V	1-10 V	2,801/3,322/3,147 lm	3,000/4,000/5,000 K	White	10" x 10" x 3 1/8"
ASD-LRLB-55DCC-WH-PRM	55 W	120-277 V	1-10 V	6,297/7,312/6,987 lm	3,000/4,000/5,000 K	White	10" x 10" x 3 1/8"
ASD-LRLB-55DCC-BZ-PRM	55 W	120-277 V	1-10 V	6,297/7,312/6,987 lm	3,000/4,000/5,000 K	Bronze	10" x 10" x 3 1/8"
ASD-LRLB-75DCC-WH-PRM	75 W	120-277 V	1-10 V	9,147/10,485/10,115 lm	3,000/4,000/5,000 K	White	11" x 11" x 3 1/8"
ASD-LRLB-75DCC-BZ-PRM	75 W	120-277 V	1-10 V	9,147/10,485/10,115 lm	3,000/4,000/5,000 K	Bronze	11" x 11" x 3 1/8"
ASD-LRLB-100DCC-WH-PRM	100 W	120-277 V	1-10 V	11,946/13,977/13,557 lm	3,000/4,000/5,000 K	White	11" x 11" x 3 1/8"
ASD-LRLB-100DCC-BZ-PRM	100 W	120-277 V	1-10 V	11,946/13,977/13,557 lm	3,000/4,000/5,000 K	Bronze	11" x 11" x 3 1/8"

For most up-to-date spec sheets please refer to asd-lighting.com

ASD LIGHTING CORP

E-mail: orders@asd-lighting.com | Web site: www.asd-lighting.com





LED Round Low Bay Light

Premium Series

PRODUCT SPECIFICATIONS:

Construction & Materials						
Housing	Aluminum + PC					
Finish	White, Bronze					
Weight	ASD-LRLB-25D50-PRM	4.4 lb (2 kg)	ASD-LRLB-25DCC-WH-PRM	4.4 lb (2 kg)	ASD-LRLB-75DCC-WH-PRM	5.5 lb (2.5 kg)
	ASD-LRLB-100D50-PRM	5.5 lb (2.5 kg)	ASD-LRLB-55DCC-WH-PRM		ASD-LRLB-75DCC-BZ-PRM	
			ASD-LRLB-55DCC-BZ-PRM		ASD-LRLB-100DCC-WH-PRM	
					ASD-LRLB-100DCC-BZ-PRM	
Environmental System						
Work Environment	Suitable for Wet Locations, IP65					
Operating Temperature	-22°F to 122°F (-30°C to 50°C)					
L-70 Life	R > 54,000 hrs, C > 174,000 hrs					
Optical System						
Luminous Flux	ASD-LRLB-25D50-PRM	3,174 lm	ASD-LRLB-25DCC-WH-PRM	2,801/3,322/3,147 lm	ASD-LRLB-75DCC-WH-PRM	9,147/10,485/10,115 m
	ASD-LRLB-100D50-PRM	12,487 lm	ASD-LRLB-55DCC-WH-PRM	6,297/7,312/6,987 lm	ASD-LRLB-75DCC-BZ-PRM	9,147/10,485/10,115 lm
			ASD-LRLB-55DCC-BZ-PRM	6,297/7,312/6,987 lm	ASD-LRLB-100DCC-WH-PRM	11,946/13,977/13,557 lm
					ASD-LRLB-100DCC-BZ-PRM	11,946/13,977/13,557 lm
Color Temperature	5,000 K		3,000/4,000/5,000 K			
CRI	≥80					
Electrical System						
Input Voltage	120-277V AC					
Max input current	ASD-LRLB-25D50-PRM	0.25 A	ASD-LRLB-25DCC-WH-PRM	0.25 A	ASD-LRLB-75DCC-WH-PRM	0.75 A
	ASD-LRLB-100D50-PRM	1.0 A	ASD-LRLB-55DCC-WH-PRM	0.55 A	ASD-LRLB-75DCC-BZ-PRM	
			ASD-LRLB-55DCC-BZ-PRM		ASD-LRLB-100DCC-WH-PRM	1 A
				ASD-LRLB-100DCC-BZ-PRM		
Inrush current (Action time)	ASD-LRLB-25D50-PRM	35 A (0.065 S)	ASD-LRLB-25DCC-WH-PRM	30 A (0.415 S)	ASD-LRLB-75DCC-WH-PRM	80 A (0.512 S)
	ASD-LRLB-100D50-PRM		ASD-LRLB-55DCC-WH-PRM		ASD-LRLB-75DCC-BZ-PRM	
		ASD-LRLB-55DCC-BZ-PRM	ASD-LRLB-100DCC-WH-PRM		30 A (0.415 S)	
			ASD-LRLB-100DCC-BZ-PRM			
AC input range	min 100 V max 277 V					
Off State Power	0 W					
Power Consumption	ASD-LRLB-25D50-PRM	25 W	ASD-LRLB-25DCC-WH-PRM	25 W	ASD-LRLB-75DCC-WH-PRM	75 W
	ASD-LRLB-100D50-PRM	100 W	ASD-LRLB-55DCC-WH-PRM	55 W	ASD-LRLB-75DCC-BZ-PRM	75 W
			ASD-LRLB-55DCC-BZ-PRM	55 W	ASD-LRLB-100DCC-WH-PRM	100 W
					ASD-LRLB-100DCC-BZ-PRM	100 W
Power Factor	≥ 0.9					
Output voltage	ASD-LRLB-25D50-PRM	60-80 V	ASD-LRLB-25DCC-WH-PRM	60-80 V	ASD-LRLB-75DCC-WH-PRM	60-100 V
	ASD-LRLB-100D50-PRM		ASD-LRLB-55DCC-WH-PRM		ASD-LRLB-75DCC-BZ-PRM	
		ASD-LRLB-55DCC-BZ-PRM	ASD-LRLB-100DCC-WH-PRM			
			ASD-LRLB-100DCC-BZ-PRM			
Max output current	ASD-LRLB-25D50-PRM	310 mA	ASD-LRLB-25DCC-WH-PRM	350 mA	ASD-LRLB-75DCC-WH-PRM	970 mA
	ASD-LRLB-100D50-PRM	1.3 A	ASD-LRLB-55DCC-WH-PRM	750 mA	ASD-LRLB-75DCC-BZ-PRM	
			ASD-LRLB-55DCC-BZ-PRM		ASD-LRLB-100DCC-WH-PRM	1.36 A
				ASD-LRLB-100DCC-BZ-PRM		
LED driver class	ASD-LRLB-25D50-PRM	Class 1	ASD-LRLB-25DCC-WH-PRM	Class 2	ASD-LRLB-75DCC-WH-PRM	Class 2
	ASD-LRLB-100D50-PRM		ASD-LRLB-55DCC-WH-PRM		ASD-LRLB-75DCC-BZ-PRM	
		ASD-LRLB-55DCC-BZ-PRM	ASD-LRLB-100DCC-WH-PRM			
			ASD-LRLB-100DCC-BZ-PRM			
Dimming compatible controls						
Brand	Leviton		Lutron		Legrand	
Models	DS710	IP710	NTSTV-DV	NFTV	DVTV-WH	H4FBL3PW
Regular and Voluntary Certifications						
5-year limited warranty						
cULus listed	E473804					
DesignLights Consortium (DLC) listed (Classification: Premium)						
Main: Outdoor Luminaires; General Application: Low Output; Primary Use: Parking Garage Luminaires						

This fixture features Integrated dimming and can be 1-10v, PWM signal or resistance to save energy and achieve specific light levels.
The LED Round Low Bay light is designed to install as a surface mounted luminaire.

For most up-to-date spec sheets please refer to asd-lighting.com

ASD LIGHTING CORP

E-mail: orders@asd-lighting.com | Web site: www.asd-lighting.com





LED Round Low Bay Light

Premium Series

INSTALLATION GUIDE

IMPORTANT SAFETY INFORMATION:

Please read all the instructions below before installation.

- ▶ Make sure that the supply voltage corresponds to the rated product voltage.
- ▶ The product must be installed by a qualified electrician in accordance with the National Electrical Code and corresponding local codes.
- ▶ If the product is damaged, do not use it.

⚠ WARNING

RISK OF PERSONAL INJURY – READ and follow all WARNINGS and installation instructions.

Keep or give to the owner for future reference.

Risk of cuts: Wear gloves to prevent cuts or abrasions when removing from carton, handling, installing, and maintaining this product.

Risk of electric shock: This product must be installed in accordance with the applicable installation code by a person familiar with the construction and operation of the product and the hazards involved.

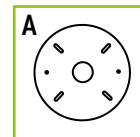
Risk of Fire: Minimum 194°F supply conductors. Consult a qualified electrician to ensure correct branch circuit conductor.

ASD® assumes no responsibility for claims arising out of improper or careless installation or handling of this product.

For recessed installation: Access above ceiling required. Inherently protected. Vapor barrier must be suitable for 194°F.

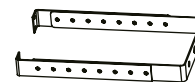
PACKAGE CONTENTS:

Description	Q-ty
LED Round Low Bay Light Fixture	1
Template (A)	1
Box	1
Cut Sheet	2

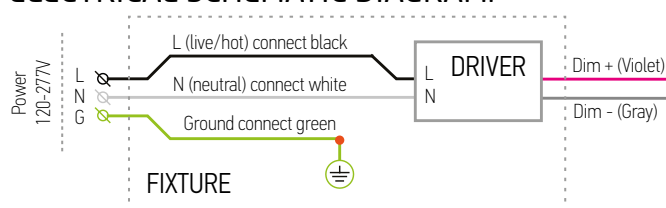


ACCESSORIES (sold separately):

Surface Mount Bracket ASD-SMB-CAN04



ELECTRICAL SCHEMATIC DIAGRAM:



ORDERING INFORMATION

LED ROUND LOW BAY LIGHT FIXTURE:

Model	Watts	CCT	UPC	Pcs per Carton	Carton Size	Carton Weight	GTIN-14
ASD-LRLB-25D50-PRM	25 W	5,000 K	819201026869	2	12.6" x 11.8" x 12.6"	10.3 lb	10819201026866
ASD-LRLB-100D50-PRM	100 W	5,000 K	819201025589	2	13.6" x 11.8" x 13.6"	13.0 lb	10819201025586
ASD-LRLB-25DCC-WH-PRM	25 W	3,000/4,000/5,000 K	810050730129	2	12.6" x 11.8" x 12.6"	10.4 lb	10810050730126
ASD-LRLB-55DCC-WH-PRM	55 W	3,000/4,000/5,000 K	810050730136	2	12.6" x 11.8" x 12.6"	10.6 lb	10810050730133
ASD-LRLB-55DCC-BZ-PRM	55 W	3,000/4,000/5,000 K	810050730334	2	12.6" x 11.8" x 12.6"	10.6 lb	10810050730331
ASD-LRLB-75DCC-WH-PRM	75 W	3,000/4,000/5,000 K	810050731317	2	13.6" x 11.8" x 13.6"	19.8 lb	10810050731314
ASD-LRLB-75DCC-BZ-PRM	75 W	3,000/4,000/5,000 K	810050731324	2	13.6" x 11.8" x 13.6"	19.8 lb	10810050731321
ASD-LRLB-100DCC-WH-PRM	100 W	3,000/4,000/5,000 K	819201024971	2	13.6" x 11.8" x 13.6"	13 lb	10819201024978
ASD-LRLB-100DCC-BZ-PRM	100 W	3,000/4,000/5,000 K	810050731331	2	13.6" x 11.8" x 13.6"	13 lb	10810050731338

ACCESSORIES:

Model	Name	Materials	Weight	Dimensions	UPC
ASD-SMB-CAN04	Surface mounting bracket	Aluminum	1.50 lb (0.68 kg)	6" x 6 3/4" x 1 3/8"	819201023219
Model	Pcs per Carton	Carton Size	Carton Weight	GTIN 14	
ASD-SMB-CAN04	20	16.7" x 14.2" x 12.8"	33.07 lbs	10819201023216	

For most up-to-date spec sheets please refer to asd-lighting.com

ASD LIGHTING CORP

E-mail: orders@asd-lighting.com | Web site: www.asd-lighting.com



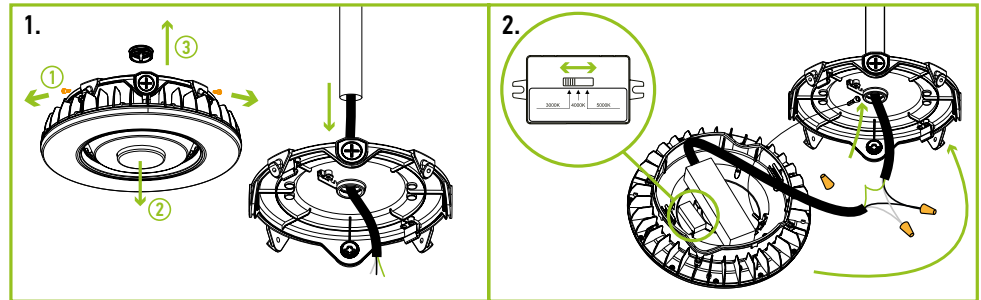


LED Round Low Bay Light

Premium Series

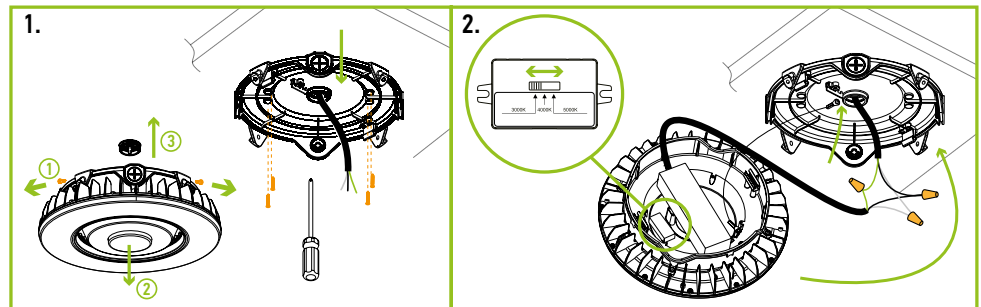
POLE MOUNTING

1. Disassemble the fixture by removing the four screws along the perimeter of the fixture. Remove the 3/4 inch plug in the center knockout on top. Thread the top of the fixture on to a 3/4 inch conduit pipe.
2. Attach the safety wire from the base to the top. Connect the wires: Black to Black, White to White, Green to Green. Secure the connection with Wire Nuts. Choose needed color temperature by adjusting the switch. Reassemble the housing by screwing the perimeter screws back into place.



SURFACE MOUNTING

1. Disassemble the fixture by removing the four screws along the perimeter of the fixture. Remove the 3/4 inch plug in the center knockout on top. Drill pilot holes. Bolt the top to the ceiling.
2. Attach the safety wire from the base to the top. Connect the wires: Black to Black, White to White, Green to Green. Secure the connection with Wire Nuts. Choose needed color temperature by adjusting the switch. Reassemble the housing by screwing the perimeter screws back into place.

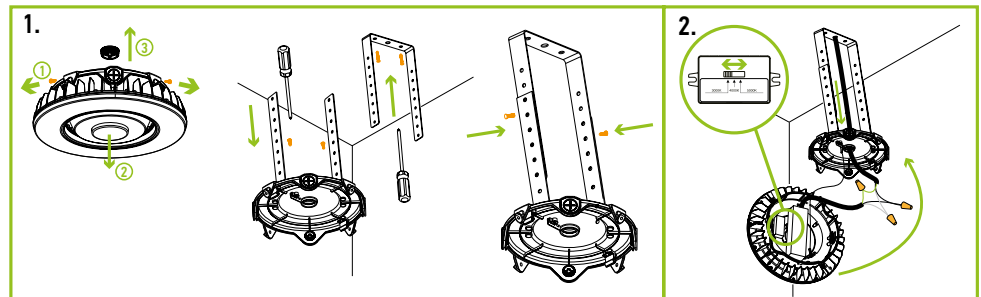


SURFACE MOUNTING

BRACKET ASD-SMB-CAN04

sold separately:

1. Disassemble the fixture by removing the four screws along the perimeter of the fixture. Remove the 3/4 inch plug in the center knockout on top. Screw one side of the mounting bracket to the ceiling. Screw the other side to the top of the fixture. Align both halves of the bracket and screw them together.
2. Attach the safety wire from the base to the top. Connect the wires: Black to Black, White to White, Green to Green. Secure the connection with Wire Nuts. Choose needed color temperature by adjusting the switch. Reassemble the housing by screwing the perimeter screws back into place.



For most up-to-date spec sheets please refer to asd-lighting.com

ASD LIGHTING CORP

E-mail: orders@asd-lighting.com | Web site: www.asd-lighting.com

