



LED DOWNLIGHT 1INCH & 2INCH

► **DESIGN** - LED DOWNLIGHT 1INCH & 2INCH comes with a durable airtight aluminum housing with excellent heat dissipation, multifaceted specular reflector with a 38° beam angle, anti-glare PC lens, and spring-loaded clips. It is designed to operate on 120V or 120-277V circuits.

► **COLOR SELECTABLE** - You can choose either a 2,700K soft white, 3,000K warm white, 3,500K neutral white, 4,000K cool white, or 5,000K daylight color temperature.

► **CRI90+** - rating provides rich and natural colors and keeps your space looking and feeling vibrant. True bright colors also improve your mood and general health.

► **INSTALLATION** - This fixture is IC rated so there is no can or any other housing required. It is also Wet Locations rated, making it perfect for any spaces with humidity requirements. Perfect for retail, hospitality, or any other commercial space with a high ceiling.

► **ADVANTAGES** - With a lifespan of 50,000 hours, these fixtures are made to last decades under normal operation! ASD provides a 5-year limited warranty along with ETL and Energy Star certifications to guarantee top quality products and safety!

Catalog number	
Notes	
Type	



REFLECTOR: WHITE
TRIM: WHITE



REFLECTOR: BLACK
TRIM: BLACK



REFLECTOR: CHROME
TRIM: WHITE



REFLECTOR: CHROME
TRIM: BLACK

Model	Size	Type	Watts	Voltage	Dimmable	Lumens	CCT	Reflector color	Trim color	Dimensions (LxH)
ASD-CD-PR-1D7AC-WH	1 inch	Round	7W	120 V	TRIAC	486/516/542/550/533 lm	5CCT (2,700/3,000/3,500/4,000/5,000 K)	White	White	2-3/8" x 3-3/8"
ASD-CD-PR-1D7AC-BK	1 inch	Round	7W	120 V	TRIAC	486/516/542/550/533 lm	5CCT (2,700/3,000/3,500/4,000/5,000 K)	Black	Black	2-3/8" x 3-3/8"
ASD-CD-PS-1D7AC-WH	1 inch	Square	7W	120 V	TRIAC	475/531/551/560/541 lm	5CCT (2,700/3,000/3,500/4,000/5,000 K)	White	White	2-3/8" x 3-3/8"
ASD-CD-PS-1D7AC-BK	1 inch	Square	7W	120 V	TRIAC	475/531/551/560/541 lm	5CCT (2,700/3,000/3,500/4,000/5,000 K)	Black	Black	2-3/8" x 3-3/8"
ASD-CD-PR-2D8AC-WH	2 inch	Round	8W	120 V	TRIAC	600/561/615/645/649 lm	5CCT (2,700/3,000/3,500/4,000/5,000 K)	White	White	3-1/8" x 2-15/16"
ASD-CD-CR-2D8AC-CH/WH	2 inch	Round	8W	120 V	TRIAC	600/536/584/609/606 lm	5CCT (2,700/3,000/3,500/4,000/5,000 K)	Chrome	White	3-1/8" x 2-15/16"
ASD-CD-CR-2D8AC-CH/BK	2 inch	Round	8W	120 V	TRIAC	600/536/584/609/606 lm	5CCT (2,700/3,000/3,500/4,000/5,000 K)	Chrome	Black	3-1/8" x 2-15/16"
ASD-CD-PR-2D8AC-BK	2 inch	Round	8W	120 V	TRIAC	600/561/615/645/649 lm	5CCT (2,700/3,000/3,500/4,000/5,000 K)	Black	Black	3-1/8" x 2-15/16"
ASD-CD-PR-2D15AC-WH	2 inch	Round	15W	120 V	TRIAC	830/978/1,078/1,110/1,023 lm	5CCT (2,700/3,000/3,500/4,000/5,000 K)	White	White	3-1/8" x 4-15/16"
ASD-CD-PR-MV-2D15AC-WH	2 inch	Round	15W	120-277 V	0-10 V	1,071/1,087/1,042/1,081/1,041 lm	5CCT (2,700/3,000/3,500/4,000/5,000 K)	White	White	3-1/8" x 4-15/16"
ASD-CD-CR-2D15AC-CH/WH	2 inch	Round	15W	120 V	TRIAC	830/842/934/1,011/964 lm	5CCT (2,700/3,000/3,500/4,000/5,000 K)	Chrome	White	3-1/8" x 4-15/16"
ASD-CD-CR-2D15AC-CH/BK	2 inch	Round	15W	120 V	TRIAC	830/842/934/1,011/964 lm	5CCT (2,700/3,000/3,500/4,000/5,000 K)	Chrome	Black	3-1/8" x 4-15/16"
ASD-CD-PR-2D15AC-BK	2 inch	Round	15W	120 V	TRIAC	830/978/1,078/1,110/1,023 lm	5CCT (2,700/3,000/3,500/4,000/5,000 K)	Black	Black	3-1/8" x 4-15/16"
ASD-CD-PS-2D8AC-WH	2 inch	Square	8W	120 V	TRIAC	600/534/584/612/615 lm	5CCT (2,700/3,000/3,500/4,000/5,000 K)	White	White	3-1/8" x 2-15/16"
ASD-CD-PS-2D8AC-BK	2 inch	Square	8W	120 V	TRIAC	600/534/584/612/615 lm	5CCT (2,700/3,000/3,500/4,000/5,000 K)	Black	Black	3-1/8" x 2-15/16"
ASD-CD-PS-2D15AC-WH	2 inch	Square	15W	120 V	TRIAC	830/923/1,015/1,103/987 lm	5CCT (2,700/3,000/3,500/4,000/5,000 K)	White	White	3-1/8" x 4-15/16"
ASD-CD-PS-2D15AC-BK	2 inch	Square	15W	120 V	TRIAC	830/923/1,015/1,103/987 lm	5CCT (2,700/3,000/3,500/4,000/5,000 K)	Black	Black	3-1/8" x 4-15/16"

For most up-to-date spec sheets please refer to asd-lighting.com



LED DOWNLIGHT 1 INCH & 2 INCH

PRODUCT SPECIFICATIONS:

Construction & Materials				
Housing	Aluminum			
Lens	PC			
Reflector color	White, Chrome, Black			
Trim color	White, Black			
Weight	ASD-CD-PR-1D7AC-WH	0.8 lbs (0.4 kg)	ASD-CD-PR-2D15AC-WH	1.2 lbs (0.5 kg)
	ASD-CD-PR-1D7AC-BK		ASD-CD-PR-MV-2D15AC-WH	
	ASD-CD-PS-1D7AC-WH	1.2 lbs (0.5 kg)	ASD-CD-CR-2D15AC-CH/WH	1.3 lbs (0.6 kg)
	ASD-CD-PS-1D7AC-BK		ASD-CD-CR-2D15AC-CH/BK	
	ASD-CD-PR-2D8AC-WH	1 lbs (0.5 kg)	ASD-CD-PS-2D8AC-WH	1 lbs (0.5 kg)
	ASD-CD-CR-2D8AC-CH/WH	0.8 lbs (0.4 kg)	ASD-CD-PS-2D8AC-BK	1.2 lbs (0.5 kg)
	ASD-CD-CR-2D8AC-CH/BK		ASD-CD-PR-2D15AC-BK	
	ASD-CD-PR-2D8AC-BK	1 lbs (0.5 kg)	ASD-CD-PS-2D15AC-WH	1.2 lbs (0.5 kg)
		ASD-CD-PS-2D15AC-BK		
Environmental system				
Work environment	Suitable for Wet Locations			
Operating temperature	-4°F to 104°F (-20°C to 40°C)			
L-70 Life	> 50,000 hrs			
Optical system				
Luminous flux	ASD-CD-PR-1D7AC-WH	486/516/542/550/533 lm	ASD-CD-PR-2D15AC-WH	830/978/1,078/1,110/1,023 lm
	ASD-CD-PR-1D7AC-BK		ASD-CD-PR-MV-2D15AC-WH	
	ASD-CD-PS-1D7AC-WH	475/531/551/560/541 lm	ASD-CD-CR-2D15AC-CH/WH	830/842/934/1,011/964 lm
	ASD-CD-PS-1D7AC-BK		ASD-CD-CR-2D15AC-CH/BK	
	ASD-CD-PR-2D8AC-WH	600/561/615/645/649 lm	ASD-CD-PS-2D8AC-WH	600/534/584/612/615 lm
	ASD-CD-CR-2D8AC-CH/WH	600/536/584/609/606 lm	ASD-CD-PS-2D8AC-BK	830/978/1,078/1,110/1,023 lm
	ASD-CD-CR-2D8AC-CH/BK		ASD-CD-PR-2D15AC-BK	
	ASD-CD-PR-2D8AC-BK	600/561/615/645/649 lm	ASD-CD-PS-2D15AC-WH	830/923/1,015/1,103/987 lm
		ASD-CD-PS-2D15AC-BK		
Color temperature	5CCT (2,700/3,000/3,500/4,000/5,000 K)			
CRI	> 90			
Electrical system				
Input voltage	120 V		for MV model: 120-277 V	
Max input current	ASD-CD-PR-1D7AC-WH	0.08 A	ASD-CD-PR-2D15AC-WH	0.15 A
	ASD-CD-PR-1D7AC-BK		ASD-CD-PR-MV-2D15AC-WH	0.12 A
	ASD-CD-PS-1D7AC-WH		ASD-CD-CR-2D15AC-CH/WH	0.15 A
	ASD-CD-PS-1D7AC-BK		ASD-CD-CR-2D15AC-CH/BK	
	ASD-CD-PR-2D8AC-WH		ASD-CD-PR-2D15AC-BK	0.08 A
	ASD-CD-CR-2D8AC-CH/WH		ASD-CD-PS-2D8AC-WH	
	ASD-CD-CR-2D8AC-CH/BK		ASD-CD-PS-2D8AC-BK	0.15 A
	ASD-CD-PR-2D8AC-BK		ASD-CD-PS-2D15AC-WH	
Inrush current (Action time)	4 A (0.5 S)		for MV model: 10 A (0.5 S)	
Off state power	0W			
Power consumption	ASD-CD-PR-1D7AC-WH	7W	ASD-CD-PR-2D15AC-WH	15W
	ASD-CD-PR-1D7AC-BK		ASD-CD-PR-MV-2D15AC-WH	
	ASD-CD-PS-1D7AC-WH		ASD-CD-CR-2D15AC-CH/WH	
	ASD-CD-PS-1D7AC-BK		ASD-CD-CR-2D15AC-CH/BK	
	ASD-CD-PR-2D8AC-WH	8W	ASD-CD-PR-2D15AC-BK	8W
	ASD-CD-CR-2D8AC-CH/WH		ASD-CD-PS-2D8AC-WH	
	ASD-CD-CR-2D8AC-CH/BK		ASD-CD-PS-2D8AC-BK	
	ASD-CD-PR-2D8AC-BK		ASD-CD-PS-2D15AC-WH	
		ASD-CD-PS-2D15AC-BK	15W	
Power factor	> 0.9			
Output voltage	36 V			
Max output current	ASD-CD-PR-1D7AC-WH	0.16 A	ASD-CD-PR-2D15AC-WH	0.32 A
	ASD-CD-PR-1D7AC-BK		ASD-CD-PR-MV-2D15AC-WH	
	ASD-CD-PS-1D7AC-WH		ASD-CD-CR-2D15AC-CH/WH	
	ASD-CD-PS-1D7AC-BK		ASD-CD-CR-2D15AC-CH/BK	
	ASD-CD-PR-2D8AC-WH	0.18 A	ASD-CD-PR-2D15AC-BK	0.27 A
	ASD-CD-CR-2D8AC-CH/WH		ASD-CD-PS-2D8AC-WH	
	ASD-CD-CR-2D8AC-CH/BK		ASD-CD-PS-2D8AC-BK	
	ASD-CD-PR-2D8AC-BK		ASD-CD-PS-2D15AC-WH	
		ASD-CD-PS-2D15AC-BK	0.32 A	
Surge protection DM/CM	2.5 kV / 2.5 kV			

For most up-to-date spec sheets please refer to asd-lighting.com



LED DOWNLIGHT 1 INCH & 2 INCH

Dimming compatible controls for TRIAC							
Brand	Lutron			Leviton			Cooper
Models	DMD-LE3-D	DVCL-153P	PD-6WCL	IPL06-10Z	6672	SI06P	
	SFTU-5A3P	CTCL-153P	DV-600P	DSL06	6621		
Dimming compatible controls for 0-10 V							
Brand	Lutron		Philips	Leviton	Lightolier Controls	Watt Stopper	
Models	Nova T - NTFTV	Divia - NFTV	Divia - DVTV	Sunrise - SR1200ZTUNV	Illumitech - IP7	ZP600FAM120	DCLV1

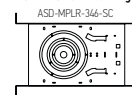
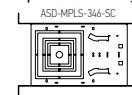
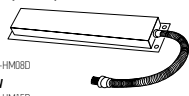
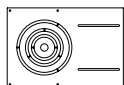
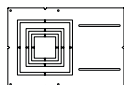
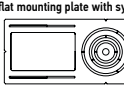
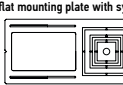
Regular and voluntary certifications
5-year limited warranty
Energy Star listed
cETLus certified 5003560

PACKAGE CONTENTS:

Description	Q-ty
LED Downlight 1inch & 2inch	1
Template for 1 or 2 inch (A)	1
Box	1



ACCESSORIES (sold separately):

New construction mounting plate with round holes and sliding clips ASD-MPLR-346-SC 	New construction mounting plate with square holes and sliding clips ASD-MPLS-346-SC 	Battery back-up kit 8W BLD-HM08D 15W BLD-HM15D 
New construction flat mounting plate with asymmetric round holes ASD-MPLR-346-FA 	New construction flat mounting plate with asymmetric square holes ASD-MPLS-346-FA 	
New construction flat mounting plate with symmetric round holes ASD-MPLR-346-FS 	New construction flat mounting plate with symmetric square holes ASD-MPLS-346-FS 	

BATTERY BACK-UP KIT INFORMATION

BLD-HM08D **BLD-HM15D** sold separately:

Specifications	BLD-HM08D	BLD-HM15D
Input voltage	120-347 Vac, 50/60 Hz	
Input current	≤ 100 mA	
Output voltage	≤ 170 Vdc	≤ 175 Vdc
Output power	8W	15W
Lumen	800 lm	1,000 lm
Application	< 60W (0-10 V dimmable fixture)	< 100W (0/1-10 V dimmable fixture)
Ambient temperature	32°F to 122°F (0°C to 50°C)	

ACCESSORY COMPATIBILITY LIST:

Accessories	Models									
	New construction flat mounting plate with asymmetric round holes ASD-MPLR-346-FA-BPACK	New construction flat mounting plate with asymmetric square holes ASD-MPLS-346-FA	New construction flat mounting plate with symmetric round holes ASD-MPLR-346-FS-4PACK	New construction flat mounting plate with symmetric square holes ASD-MPLS-346-FS	New construction mounting plate with round holes and sliding clips ASD-MPLR-346-SC-BPACK	New construction mounting plate with square holes and sliding clips ASD-MPLS-346-SC	Battery back-up kit 8W BLD-HM08D	Battery back-up kit 15W BLD-HM15D		
ASD-CD-PR-1D7AC-WH										
ASD-CD-PR-1D7AC-BK										
ASD-CD-PS-1D7AC-WH										
ASD-CD-PS-1D7AC-BK										
ASD-CD-PR-2D8AC-WH	•		•		•				•	
ASD-CD-CR-2D8AC-CH/WH	•		•		•				•	
ASD-CD-CR-2D8AC-CH/BK	•		•		•				•	
ASD-CD-PR-2D8AC-BK	•		•		•				•	
ASD-CD-PR-2D15AC-WH	•		•		•				•	
ASD-CD-PR-MV-2D15AC-WH	•		•		•				•	
ASD-CD-CR-2D15AC-CH/WH	•		•		•				•	
ASD-CD-CR-2D15AC-CH/BK	•		•		•				•	
ASD-CD-PR-2D15AC-BK	•		•		•				•	
ASD-CD-PS-2D8AC-WH	•	•	•	•	•	•			•	•
ASD-CD-PS-2D8AC-BK	•	•	•	•	•	•			•	•
ASD-CD-PS-2D15AC-WH	•	•	•	•	•	•			•	•
ASD-CD-PS-2D15AC-BK	•	•	•	•	•	•			•	•

For most up-to-date spec sheets please refer to asd-lighting.com



LED DOWNLIGHT 1 INCH & 2 INCH

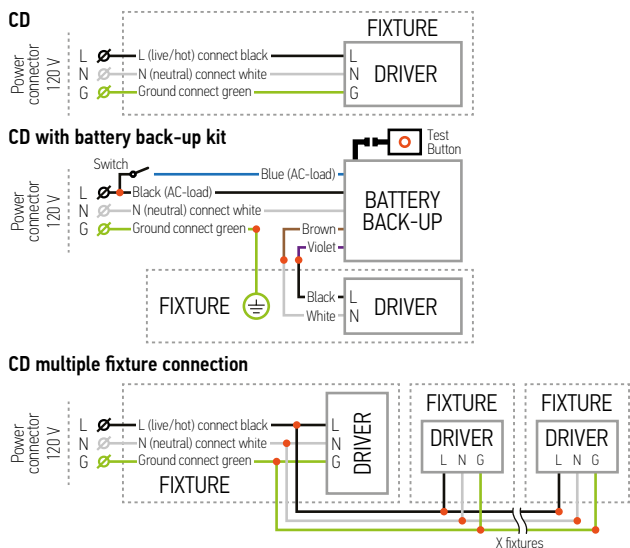
INSTALLATION GUIDE

IMPORTANT SAFETY INFORMATION:

Please read all the instructions below before installation.

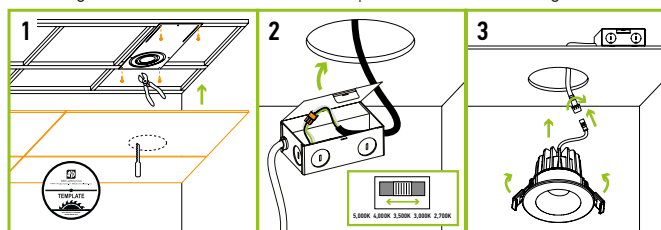
- ▶ Make sure that the supply voltage corresponds to the rated product voltage.
- ▶ The product must be installed by a qualified electrician in accordance with the National Electrical Code and corresponding local codes.
- ▶ If the product is damaged, do not use it.

ELECTRICAL SCHEMATIC DIAGRAM:



INSTALLATION STEPS:

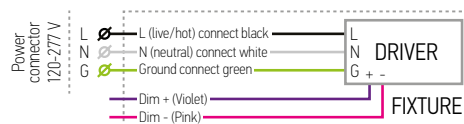
1. Remove 3 inch central circle on the mounting plate. Place the mounting plate and secure its position with the screws on the beams. Install drywall board. Cut a hole in the ceiling using template (included).
2. Connect the wires: Black to Black, White to White, Green to Green. Select the color temperature you need by using the switch. Put the driver box above the ceiling through the hole in the frame.
3. Connect driver box and fixture using quick connector, fold up the two spring mounting tabs and release as the fixture is placed into the mounting hole.



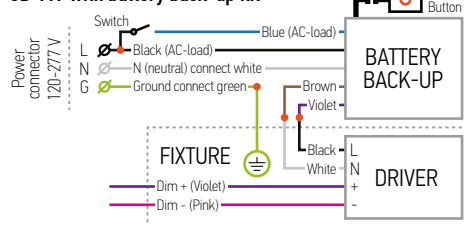
⚠ WARNING

RISK OF PERSONAL INJURY – READ and follow all WARNINGS and installation instructions. Keep or give to the owner for future reference.
Risk of cuts: Wear gloves to prevent cuts or abrasions when removing from carton, handling, installing, and maintaining this product.
Risk of electric shock: This product must be installed in accordance with the applicable installation code by a person familiar with the construction and operation of the product and the hazards involved.
Risk of Fire: Minimum 194°F supply conductors. Consult a qualified electrician to ensure correct branch circuit conductor.
 ASD® assumes no responsibility for claims arising out of improper or careless Installation or handling of this product.

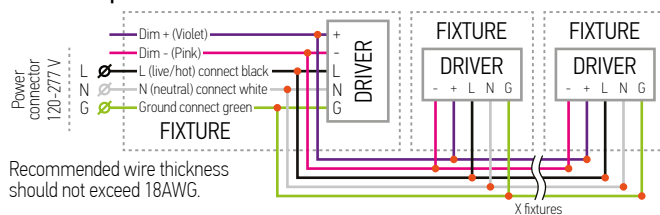
CD-MV



CD-MV with battery back-up kit



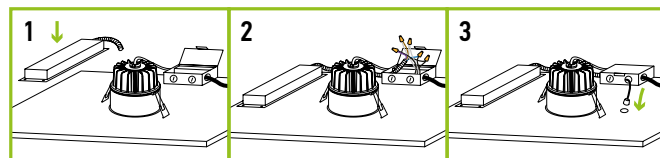
CD-MV multiple fixture connection



Recommended wire thickness should not exceed 18AWG.

INSTALLATION BATTERY BACK-UP KIT:

1. Secure the battery back-up kit to the ceiling.
2. Connect wires as shown on electrical diagram.
3. Connect test switch and affix it in the hole on the surface.



For most up-to-date spec sheets please refer to asd-lighting.com



LED DOWNLIGHT 1 INCH & 2 INCH

ORDERING INFORMATION

Model	UPC	Pcs. per carton	Carton size	Carton weight	GTIN 14
ASD-CD-PR-1D7AC-WH	810128111225	24	17.1" x 15.4" x 8.9"	25.1 lbs	20810128111229
ASD-CD-PR-1D7AC-BK	810128111232	24	17.1" x 15.4" x 8.9"	25.1 lbs	20810128111236
ASD-CD-PS-1D7AC-WH	810128111263	24	17.1" x 15.4" x 8.9"	25.1 lbs	20810128111267
ASD-CD-PS-1D7AC-BK	810128111270	24	17.1" x 15.4" x 8.9"	25.1 lbs	20810128111274
ASD-CD-PR-2D8AC-WH	810050736541	18	14.8" x 10.8" x 13.4"	21.5 lbs	10810050736548
ASD-CD-CR-2D8AC-CH/WH	810050737920	18	14.8" x 10.8" x 13.4"	19 lbs	10810050737927
ASD-CD-CR-2D8AC-CH/BK	810050737913	18	14.8" x 10.8" x 13.4"	19 lbs	10810050737910
ASD-CD-PR-2D8AC-BK	810128111201	18	14.8" x 10.8" x 13.4"	21.5 lbs	10810128111208
ASD-CD-PR-2D15AC-WH	810050736565	18	13" x 12.8" x 18.1"	26.8 lbs	10810050736562
ASD-CD-PR-MV-2D15AC-WH	810050739481	18	13" x 12.8" x 18.1"	26.8 lbs	10810050739488
ASD-CD-CR-2D15AC-CH/WH	810050737944	18	13" x 12.8" x 18.1"	27.6 lbs	10810050737941
ASD-CD-CR-2D15AC-CH/BK	810050737937	18	13" x 12.8" x 18.1"	27.6 lbs	10810050737934
ASD-CD-PR-2D15AC-BK	810128111218	18	13" x 12.8" x 18.1"	26.8 lbs	10810128111215
ASD-CD-PS-2D8AC-WH	810050736572	18	14.8" x 10.8" x 13.4"	21.5 lbs	10810050736579
ASD-CD-PS-2D8AC-BK	810128111249	18	14.8" x 10.8" x 13.4"	21.5 lbs	10810128111246
ASD-CD-PS-2D15AC-WH	810050736589	18	13" x 12.8" x 18.1"	26.8 lbs	10810050736586
ASD-CD-PS-2D15AC-BK	810128111256	18	13" x 12.8" x 18.1"	26.8 lbs	10810128111253

ACCESSORIES:

Model	Name	Weight	Dimensions (LxWxH)	UPC
ASD-MPLR-346-FA-6PACK	New construction flat mounting plate with asymmetric round holes	0.9 lbs	13-1/4" x 9-1/16" x 1/16"	810050739344
ASD-MPLS-346-FA	New construction flat mounting plate with asymmetric square holes	0.9 lbs	13-1/4" x 9-1/16" x 1/16"	810050733861
ASD-MPLR-346-FS-6PACK	New construction flat mounting plate with symmetric round holes	1 lbs	26" x 8-1/4" x 1/16"	810050739351
ASD-MPLS-346-FS	New construction flat mounting plate with symmetric square holes	1 lbs	26" x 8-1/4" x 1/16"	810050733885
ASD-MPLR-346-SC-6PACK	New construction mounting plate with round holes and sliding clips	1.1 lbs	14-3/8" x 10-9/16" x 1-5/8"	810050739337
ASD-MPLS-346-SC	New construction mounting plate with square holes and sliding clips	1.1 lbs	14-3/8" x 10-9/16" x 1-5/8"	810050731843
BLD-HM08D	Battery back-up kit 8W	2 lbs	10-7/16" x 1-15/16" x 15/16"	810128111508
BLD-HM15D	Battery back-up kit 15W	2.4 lbs	12-15/16" x 1-7/16" x 15/16"	810050734882

Model	Pcs. in middle box	Middle box size	Middle box weight	GTIN 14 in middle box	Pcs. per carton	Carton size	Carton weight	GTIN 14 in carton
ASD-MPLR-346-FA-6PACK	-	-	-	-	4	14.4" x 9.8" x 3.2"	22.5 lbs	10810050739341
ASD-MPLS-346-FA	6	9.3" x 0.6" x 13.6"	5.5 lb	10810050733868	24	14.4" x 9.8" x 3.1"	22.9 lbs	20810050733865
ASD-MPLR-346-FS-6PACK	-	-	-	-	4	27.2" x 9.1" x 3.2"	25.2 lbs	10810050739358
ASD-MPLS-346-FS	6	8.5" x 0.6" x 26.4"	6 lb	10810050733882	24	27.2" x 9.1" x 3.2"	24.6 lbs	20810050733889
ASD-MPLR-346-SC-6PACK	-	-	-	-	2	17.3" x 11.9" x 13.4"	17 lbs	10810050739334
ASD-MPLS-346-SC	6	15" x 11.2" x 7.5"	7.5 lb	10810050731840	12	23.2" x 15.6" x 8.3"	16.4 lbs	20810050731847
BLD-HM08D	-	-	-	-	10	14.4" x 13.8" x 9.3"	19.6 lbs	10810128111505
BLD-HM15D	-	-	-	-	10	18.5" x 13.4" x 11.8"	25.6 lbs	10810050734889

For most up-to-date spec sheets please refer to asd-lighting.com

ASD LIGHTING CORP

E-mail: orders@asd-lighting.com | Web site: www.asd-lighting.com

