



ROUND OUTDOOR WALL CYLINDER

► **DESIGN & OPTIONS** - ROUND OUTDOOR WALL CYLINDERS have a modern design with effective up/down illumination. This E26 base fixture is made from die-cast aluminum and a tempered glass cover. It is a durable lighting fixture that is highly resistant to rust, making it perfect for a variety of applications. The high quality reflector creates a 50° beam angle. It comes in four finish options: BLACK, BRONZE, WHITE, and STAINLESS STEEL.

► **INSTALLATION** - Installation is quick and easy: just attach the mounting plate to the J-box with screws, connect the wires, and fasten the fixture to the mounting plate. Waterproof gaskets, decorative nuts and all necessary installation accessories are provided.

For your convenience, remove the glass cover and screw in the bulb before installing. We recommend using LED A19 9W E26 ASD or you can use incandescent bulbs (60W max). Refer to install instructions for detailed steps.

► **APPLICATION** - This ROUND OUTDOOR WALL CYLINDER creates a cozy ambience that is great for indoor and outdoor projects such as decks, front doors, porches, patios, gardens, corridors, balconies, villas, and walkways. The fixture is Wet location rated and suitable for severe weather conditions.

► **ENERGY SAVING & EFFICIENCY** - This fixture is designed to support all kinds of bulbs with E26 sockets, but we strongly recommend using an LED bulb, not only for the high-quality lighting, but also for the appreciable savings.

► **CERTIFICATION & WARRANTY** - Buy with confidence: ASD provides a 5-year warranty along with ETL certification to guarantee top quality products and safety!

Catalog number	
Notes	
Type	



Finish:	Black	Bronze
	White	Steel

PRODUCT LEGEND:

Family	Number of lights	Light Source Type	Bulb Base Type	Maximum Bulb Wattage	Finish
ASD-OCL	X	I	XX	XX	XX
Round Outdoor Wall Cylinder	1 = 1 light 2 = 2 light	LED, Incandescent	26 = E26 Medium	60 = 60 W	BK = Black BZ = Oil Rubbed Bronze WH = White SS = Stainless Steel

ROUND OUTDOOR WALL CYLINDER:

Model	Number of lights	Bulb Type	Dimensions (LxWxH)	Finish	UPC
ASD-OCL-11-2660-BK	1 light	E26 60W max	4 3/8" x 6 3/8" x 7 7/8"	Black	810050730594
ASD-OCL-11-2660-BZ	1 light	E26 60W max	4 3/8" x 6 3/8" x 7 7/8"	Oil Rubbed Bronze	810050730600
ASD-OCL-11-2660-WH	1 light	E26 60W max	4 3/8" x 6 3/8" x 7 7/8"	White	810050730617
ASD-OCL-11-2660-SS	1 light	E26 60W max	4 3/8" x 6 3/8" x 7 7/8"	Stainless Steel	810050730624
ASD-OCL-21-2660-BK	2 light	E26 60W max	4 3/8" x 6 3/8" x 11 13/16"	Black	810050730631
ASD-OCL-21-2660-BZ	2 light	E26 60W max	4 3/8" x 6 3/8" x 11 13/16"	Oil Rubbed Bronze	810050730648
ASD-OCL-21-2660-WH	2 light	E26 60W max	4 3/8" x 6 3/8" x 11 13/16"	White	810050730655
ASD-OCL-21-2660-SS	2 light	E26 60W max	4 3/8" x 6 3/8" x 11 13/16"	Stainless Steel	810050730662

ORDERING INFORMATION:

Model	Pcs in middle box	Middle box Size	Middle box Weight	GTIN 14 for Middle box	Pcs. per Carton	Carton Size	Carton Weight	GTIN 14 for Carton
ASD-OCL-11-2660-BK	2	11" x 7.7" x 9.4"	11.5 lb	10810050730591	6	23.8" x 11.6" x 10"	16.7 lb	20810050730598
ASD-OCL-11-2660-BZ	2	11" x 7.7" x 9.4"	11.5 lb	10810050730607	6	23.8" x 11.6" x 10"	16.7 lb	20810050730604
ASD-OCL-11-2660-WH	2	11" x 7.7" x 9.4"	11.5 lb	10810050730614	6	23.8" x 11.6" x 10"	16.7 lb	20810050730611
ASD-OCL-11-2660-SS	2	11" x 7.7" x 9.4"	11.5 lb	10810050730621	6	23.8" x 11.6" x 10"	16.7 lb	20810050730628
ASD-OCL-21-2660-BK	2	11" x 7.7" x 13.4"	15.2 lb	10810050730638	6	23.8" x 11.6" x 14"	21.7 lb	20810050730635
ASD-OCL-21-2660-BZ	2	11" x 7.7" x 13.4"	15.2 lb	10810050730645	6	23.8" x 11.6" x 14"	21.7 lb	20810050730642
ASD-OCL-21-2660-WH	2	11" x 7.7" x 13.4"	15.2 lb	10810050730652	6	23.8" x 11.6" x 14"	21.7 lb	20810050730659
ASD-OCL-21-2660-SS	2	11" x 7.7" x 13.4"	15.2 lb	10810050730669	6	23.8" x 11.6" x 14"	21.7 lb	20810050730666

For most up-to-date spec sheets please refer to asd-lighting.com

ASD LIGHTING CORP

E-mail: orders@asd-lighting.com | Web site: www.asd-lighting.com





ROUND OUTDOOR WALL CYLINDER

PRODUCT SPECIFICATIONS:

Construction & Materials		
Housing	Aluminum	
Lens	Glass	
Finish Color	Black, Oil Rubbed Bronze, White, Stainless Steel	
Weight	ASD-OCL-11-2660-BK	1.9 lb (0.9 kg)
	ASD-OCL-11-2660-BZ	
	ASD-OCL-11-2660-WH	
	ASD-OCL-11-2660-SS	2.5 lb (1.2 kg)
	ASD-OCL-21-2660-BK	
	ASD-OCL-21-2660-BZ	
	ASD-OCL-21-2660-WH	
	ASD-OCL-21-2660-SS	
Environmental System		
Work Environment	Suitable for Wet Locations	
Operating Temperature	-40°F to 113°F (-40°C to 45°C)	
Electrical System		
Input Voltage	120 V	
Quantity of lights	ASD-OCL-11-2660-BK	1 - lights
	ASD-OCL-11-2660-BZ	
	ASD-OCL-11-2660-WH	
	ASD-OCL-11-2660-SS	2 - lights
	ASD-OCL-21-2660-BK	
	ASD-OCL-21-2660-BZ	
	ASD-OCL-21-2660-WH	
	ASD-OCL-21-2660-SS	
Light Direction	ASD-OCL-11-2660-BK	Up or Down
	ASD-OCL-11-2660-BZ	
	ASD-OCL-11-2660-WH	
	ASD-OCL-11-2660-SS	Up and Down
	ASD-OCL-21-2660-BK	
	ASD-OCL-21-2660-BZ	
	ASD-OCL-21-2660-WH	
	ASD-OCL-21-2660-SS	
Light Source Type	Incandescent/LED/CFL bulb	
Bulb Base Type	E26 Medium	
Maximum Bulb Wattage	60 watts	
Maximum Wattage	ASD-OCL-11-2660-BK	60 watts
	ASD-OCL-11-2660-BZ	
	ASD-OCL-11-2660-WH	
	ASD-OCL-11-2660-SS	120 watts
	ASD-OCL-21-2660-BK	
	ASD-OCL-21-2660-BZ	
	ASD-OCL-21-2660-WH	
	ASD-OCL-21-2660-SS	
Regular and Voluntary Certifications		
5-year limited warranty	cETLus certified 4001256	

INSTALLATION GUIDE

IMPORTANT SAFETY INFORMATION:

Please read all the instructions below before installation.

- Make sure that the supply voltage corresponds to the rated product voltage.
- The product must be installed by a qualified electrician in accordance with the National Electrical Code and corresponding local codes.
- If the product is damaged, do not use it.

⚠ WARNING

RISK OF PERSONAL INJURY – READ and follow all WARNINGS and installation instructions.

Keep or give to the owner for future reference.

Risk of cuts: Wear gloves to prevent cuts or abrasions when removing from carton, handling, installing, and maintaining this product.

Risk of electric shock: This product must be installed in accordance with the applicable installation code by a person familiar with the construction and operation of the product and the hazards involved.

Risk of Fire: Minimum 194°F supply conductors. Consult a qualified electrician to ensure correct branch circuit conductor.

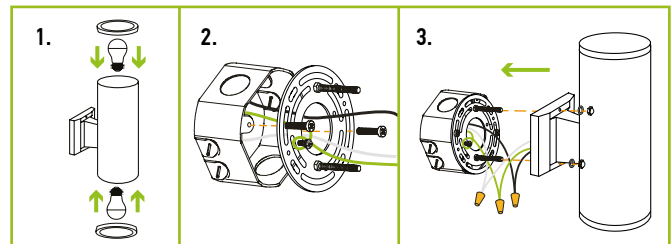
ASD® assumes no responsibility for claims arising out of improper or careless installation or handling of this product.

INSTALLATION STEPS:

- Remove the glass cover and install the bulbs (A19/60 W max).
- Screw the two mounting screws onto the mounting bracket. Attach the mounting bracket to the outlet box using screws. Make sure the threads of the mounting screws are facing outside when the mounting bracket is attached to the outlet box.
- Connect the wires: Black to Black, White to White, Green to Green. Secure the connection with wire nuts. Place the fixture base on the wall by aligning the protruding mounting screws through the holes on the wall plate. Put the waterproof gasket on each mounting screw. Tighten the fixture to the wall using two decorative nuts.

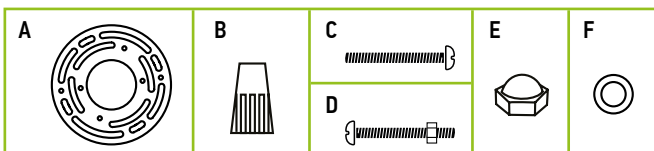
Caulk around wall plate with silicone weather sealant.

For outdoor locations it is recommended to use silicone (not included).



PACKAGE CONTENTS:

Description	Q-ty
Round Outdoor Wall Cylinder	1
Mounting bracket (A)	3
Wire Nut (B)	1
Mounting screw (C)	2
Outlet box screw (D)	2
Decorative nut (E)	2
Waterproof gasket (F)	2
Box	1
Cut sheet	2



For most up-to-date spec sheets please refer to asd-lighting.com

ASD LIGHTING CORP

E-mail: orders@asd-lighting.com | Web site: www.asd-lighting.com

