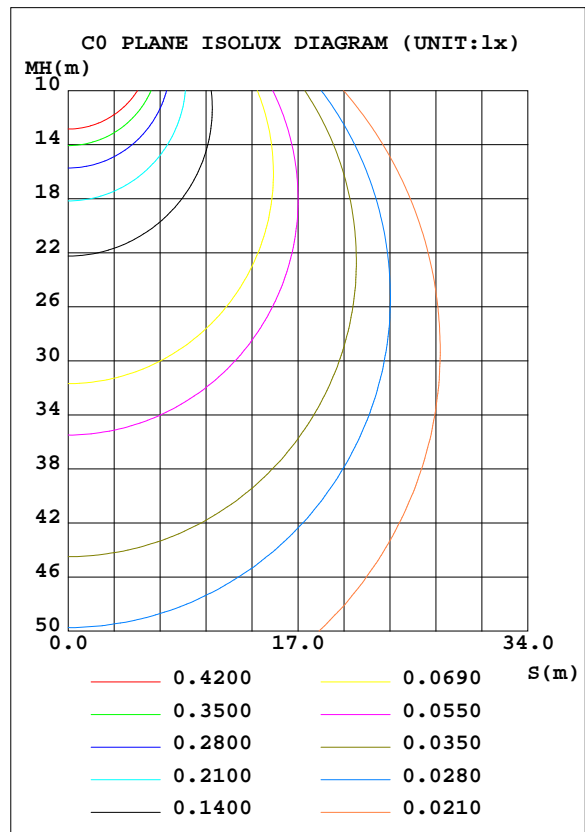
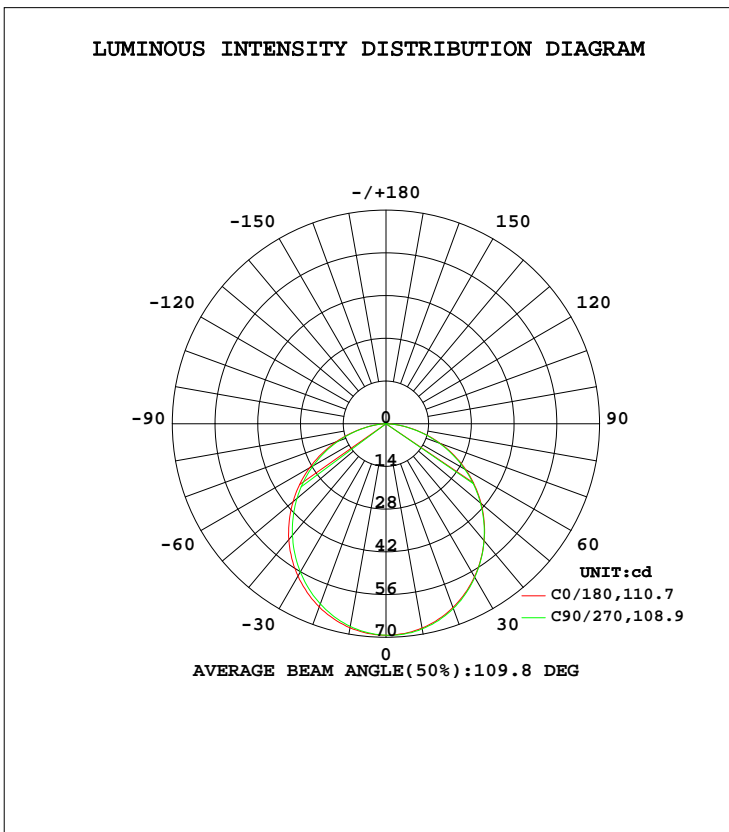


LUMINAIRE PHOTOMETRIC TEST REPORT

Test:U:120.05V I:0.0258A P:3.0300W PF:0.9783 Freq:60.00Hz Lamp Flux:191.609x1 lm		
NAME: ASD-UCS-9D3CC	TYPE: N/A	WEIGHT: N/A
SPEC.: N/A	DIM.: N/A	SERIAL No.: N/A
MFR.: ASD Lighting Corp	SUR.: N/A	Shielding Angle: N/A

DATA OF LAMP		PHOTOMETRIC DATA				Eff: 63.24 lm/W
MODEL	ASD-UCS-9D3CC	I _{max} (cd)	69.37	S/MH(C0/180)		1.24
NOMINAL POWER(W)	3	LOR(%)	100.0	S/MH(C90/270)		1.25
RATED VOLTAGE(V)	120	TOTAL FLUX(lm)	191.61	η UP, DN(C0-180)		0.1,48.8
NOMINAL FLUX(lm)	191.609	CIE CLASS	DIRECT	η UP, DN(C180-360)		0.0,51.1
LAMPS INSIDE	1	η up(%)	0.1	CIBSE SHR NOM		1.25
TEST VOLTAGE(V)	120	η down(%)	99.9	CIBSE SHR MAX		1.35



C Range: 0 - 360DEG
 C Interval: 22.5DEG
 Test Speed: HIGH
 Temperature:24.8DEG
 Operators:Water
 Test Date:2023-09-06

γ Range: 0 - 180DEG
 γ Interval: 1.0DEG
 Test System:EVERFINE GO-R5000_V2 SYSTEM V2.00.446
 Humidity:34%
 Test Distance:2.513m [K=1.0000]
 Remarks:

ZONAL FLUX DIAGRAM

ZONAL FLUX DIAGRAM:

γ	C0	C45	C90	C135	C180	C225	C270	C315	γ	Φ zone	Φ total	%lum, lamp
10	67.89	67.53	67.41	67.58	67.98	68.18	68.25	68.16	0- 10	6.547	6.547	3.42,3.42
20	63.90	63.19	62.86	63.26	64.10	64.37	64.41	64.37	10- 20	18.66	25.21	13.2,13.2
30	57.66	56.63	56.14	56.77	57.99	58.21	58.16	58.20	20- 30	28.06	53.27	27.8,27.8
40	49.53	48.38	47.73	48.51	50.04	50.17	49.99	50.17	30- 40	33.52	86.78	45.3,45.3
50	39.77	38.77	38.11	38.98	40.70	40.75	40.43	40.65	40- 50	34.46	121.2	63.3,63.3
60	28.96	28.02	27.62	28.51	30.25	30.22	29.83	29.85	50- 60	30.88	152.1	79.4,79.4
70	17.44	16.67	16.60	17.46	19.01	18.96	18.55	18.36	60- 70	23.30	175.4	91.6,91.6
80	6.479	5.948	6.267	6.818	7.697	7.852	7.574	7.272	70- 80	12.98	188.4	98.3,98.3
90	0.0027	0.0021	0.0019	0.0095	0.0676	0.0054	0.0001	0.0007	80- 90	3.034	191.4	99.9,99.9
100	0.0070	0.0116	0.0095	0.0283	0.0005	0	0	0	90-100	0.0041	191.4	99.9,99.9
110	0.0110	0.0125	0.0147	0.0216	0.0060	0.0006	0.0010	0.0012	100-110	0.0081	191.5	99.9,99.9
120	0.0183	0.0193	0.0237	0.0260	0.0075	0.0062	0.0058	0.0069	110-120	0.0110	191.5	99.9,99.9
130	0.0309	0.0330	0.0384	0.0378	0.0152	0.0143	0.0135	0.0139	120-130	0.0172	191.5	99.9,99.9
140	0.0558	0.0625	0.0664	0.0643	0.0241	0.0235	0.0239	0.0239	130-140	0.0251	191.5	99.9,99.9
150	0.0830	0.0928	0.0992	0.0896	0.0322	0.0337	0.0378	0.0332	140-150	0.0335	191.5	100,100
160	0.1087	0.1122	0.1140	0.1161	0.0476	0.0469	0.0472	0.0463	150-160	0.0333	191.6	100,100
170	0.1041	0.1053	0.1065	0.1069	0.0601	0.0573	0.0571	0.0590	160-170	0.0235	191.6	100,100
180	0.0843	0.0790	0.0776	0.0842	0.0831	0.0829	0.0771	0.0793	170-180	0.0078	191.6	100,100
DEG	LUMINOUS INTENSITY:cd									UNIT:lm		

Conical surface Flux(90deg): 104.18 lm

%lum = 54.4%
%lamp = 54.4%

Conical surface Flux(120deg): 152.13 lm

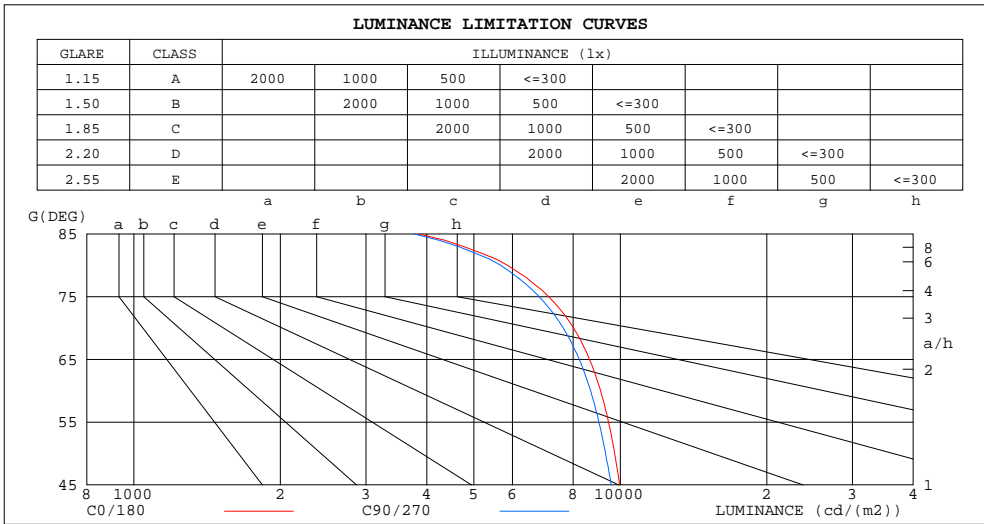
%lum = 79.4%
%lamp = 79.4%

C Range: 0 - 360DEG
C Interval: 22.5DEG
Test Speed: HIGH
Temperature:24.8DEG
Operators:Water
Test Date:2023-09-06

γ Range: 0 - 180DEG
 γ Interval: 1.0DEG
Test System:EVERFINE GO-R5000_V2 SYSTEM V2.00.446
Humidity:34%
Test Distance:2.513m [K=1.0000]
Remarks:

LUMINANCE LIMITATION CURVES

Test:U:120.05V I:0.0258A P:3.0300W PF:0.9783 Freq:60.00Hz Lamp Flux:191.609x1 lm		
NAME: ASD-UCS-9D3CC	TYPE: N/A	WEIGHT: N/A
SPEC.: N/A	DIM.: N/A	SERIAL No.: N/A
MFR.: ASD Lighting Corp	SUR.: N/A	Shielding Angle: N/A



LUMINANCE cd/(m2)		
G (DEG)	C0/180	C90/270
85	3856	3770
80	5868	5679
75	7121	6811
70	8018	7636
65	8640	8236
60	9109	8692
55	9457	9030
50	9730	9329
45	9965	9569

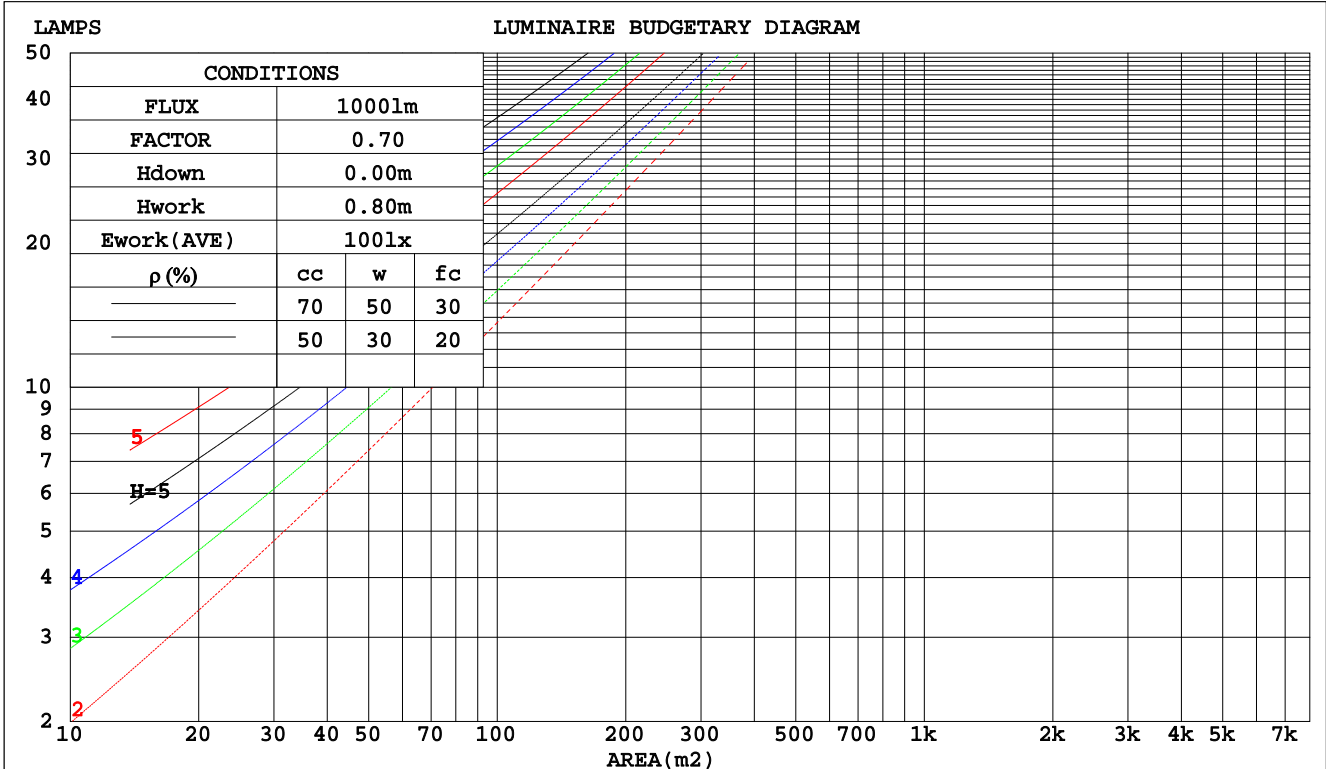
C Range: 0 - 360DEG
 C Interval: 22.5DEG
 Test Speed: HIGH
 Temperature: 24.8DEG
 Operators: Water
 Test Date: 2023-09-06

γ Range: 0 - 180DEG
 γ Interval: 1.0DEG
 Test System: EVERFINE GO-R5000_V2 SYSTEM V2.00.446
 Humidity: 34%
 Test Distance: 2.513m [K=1.0000]
 Remarks:

CU AND LUMINAIRE BUDGETARY ESTIMATE DIAGRAM

Test:U:120.05V I:0.0258A P:3.0300W PF:0.9783 Freq:60.00Hz Lamp Flux:191.609x1 lm		
NAME: ASD-UCS-9D3CC	TYPE: N/A	WEIGHT: N/A
SPEC.: N/A	DIM.: N/A	SERIAL No.: N/A
MFR.: ASD Lighting Corp	SUR.: N/A	Shielding Angle: N/A

pcc	80%			70%			50%			30%			10%			0
	50%	30%	10%	50%	30%	10%	50%	30%	10%	50%	30%	10%	50%	30%	10%	0
pw																0
pfc	20%			20%			20%			20%			20%			0
RCR	RCR:Room Cavity Ratio Coefficients of Utilization(CU)															
0.0	1.19	1.19	1.19	1.16	1.16	1.16	1.11	1.11	1.11	1.06	1.06	1.06	1.02	1.02	1.02	.00
1.0	1.04	.00	.96	1.02	.98	.94	.98	.94	.91	.94	.91	.89	.90	.88	.86	.84
2.0	.91	.84	.78	.89	.83	.77	.85	.80	.76	.82	.78	.74	.79	.75	.72	.70
3.0	.80	.72	.65	.78	.71	.64	.75	.69	.63	.72	.67	.62	.70	.65	.61	.59
4.0	.71	.62	.55	.69	.61	.55	.67	.60	.54	.64	.58	.53	.62	.57	.53	.50
5.0	.63	.54	.47	.62	.54	.47	.60	.52	.47	.58	.51	.46	.56	.50	.46	.44
6.0	.57	.48	.41	.56	.47	.41	.54	.47	.41	.52	.46	.41	.51	.45	.40	.38
7.0	.52	.43	.37	.51	.42	.36	.49	.42	.36	.48	.41	.36	.46	.40	.36	.34
8.0	.47	.39	.33	.46	.38	.33	.45	.38	.32	.44	.37	.32	.43	.36	.32	.30
9.0	.43	.35	.29	.43	.35	.29	.41	.34	.29	.40	.34	.29	.39	.33	.29	.27
10.0	.40	.32	.27	.39	.32	.27	.38	.31	.26	.37	.31	.26	.36	.31	.26	.24



C Range: 0 - 360DEG
 C Interval: 22.5DEG
 Test Speed: HIGH
 Temperature:24.8DEG
 Operators:Water
 Test Date:2023-09-06

γ Range: 0 - 180DEG
 γ Interval: 1.0DEG
 Test System:EVERFINE GO-R5000_V2 SYSTEM V2.00.446
 Humidity:34%
 Test Distance:2.513m [K=1.0000]
 Remarks:

WEC AND CCEC

Test:U:120.05V I:0.0258A P:3.0300W PF:0.9783 Freq:60.00Hz		
Lamp Flux:191.609x1 lm		
NAME: ASD-UCS-9D3CC	TYPE: N/A	WEIGHT: N/A
SPEC.: N/A	DIM.: N/A	SERIAL No.: N/A
MFR.: ASD Lighting Corp	SUR.: N/A	Shielding Angle: N/A

ρcc	80%			70%			50%			30%			10%			0
ρw	50%	30%	10%	50%	30%	10%	50%	30%	10%	50%	30%	10%	50%	30%	10%	0
ρfc	20%			20%			20%			20%			20%			0
RCR	RCR:Room Cavity Ratio						Wall Exitance Coefficients(WEC)									
0.0																
1.0	.305	.173	.055	.298	.170	.054	.284	.163	.052	.272	.157	.050	.261	.151	.049	
2.0	.288	.158	.048	.282	.155	.048	.270	.150	.047	.260	.146	.046	.250	.141	.045	
3.0	.267	.142	.043	.262	.140	.042	.252	.136	.041	.242	.133	.041	.233	.129	.040	
4.0	.247	.128	.038	.242	.127	.037	.233	.124	.037	.225	.121	.036	.217	.118	.036	
5.0	.229	.117	.034	.225	.115	.034	.216	.113	.033	.209	.110	.033	.202	.108	.032	
6.0	.212	.106	.030	.209	.105	.030	.201	.103	.030	.194	.101	.030	.188	.099	.029	
7.0	.198	.098	.028	.194	.097	.028	.188	.095	.027	.182	.093	.027	.176	.091	.027	
8.0	.185	.090	.025	.182	.089	.025	.176	.088	.025	.170	.086	.025	.165	.085	.025	
9.0	.173	.084	.023	.171	.083	.023	.165	.082	.023	.160	.080	.023	.156	.079	.023	
10.0	.163	.078	.022	.161	.078	.022	.156	.076	.021	.151	.075	.021	.147	.074	.021	

ρcc	80%			70%			50%			30%			10%			0
ρw	50%	30%	10%	50%	30%	10%	50%	30%	10%	50%	30%	10%	50%	30%	10%	0
ρfc	20%			20%			20%			20%			20%			0
RCR	RCR:Room Cavity Ratio						Ceiling Cavity Exitance Coefficients(CCEC)									
0.0	.191	.191	.191	.163	.163	.163	.111	.111	.111	.064	.064	.064	.020	.020	.020	
1.0	.181	.157	.135	.155	.135	.117	.106	.093	.081	.061	.054	.047	.019	.017	.015	
2.0	.172	.133	.099	.148	.114	.086	.101	.079	.060	.058	.046	.035	.019	.015	.011	
3.0	.165	.115	.075	.141	.099	.065	.097	.069	.046	.056	.040	.027	.018	.013	.009	
4.0	.157	.102	.059	.135	.088	.051	.093	.061	.036	.054	.036	.021	.017	.012	.007	
5.0	.150	.091	.048	.129	.079	.042	.089	.055	.030	.051	.032	.018	.017	.011	.006	
6.0	.142	.083	.040	.122	.072	.035	.084	.050	.025	.049	.030	.015	.016	.010	.005	
7.0	.136	.076	.034	.117	.066	.030	.081	.046	.021	.047	.027	.013	.015	.009	.004	
8.0	.129	.070	.029	.111	.061	.026	.077	.043	.018	.045	.025	.011	.014	.008	.004	
9.0	.123	.065	.026	.106	.057	.023	.074	.040	.016	.043	.023	.010	.014	.008	.003	
10.0	.118	.061	.023	.101	.053	.020	.070	.037	.014	.041	.022	.009	.013	.007	.003	

C Range: 0 - 360DEG
 C Interval: 22.5DEG
 Test Speed: HIGH
 Temperature:24.8DEG
 Operators:Water
 Test Date:2023-09-06

γ Range: 0 - 180DEG
 γ Interval: 1.0DEG
 Test System:EVERFINE GO-R5000_V2 SYSTEM V2.00.446
 Humidity:34%
 Test Distance:2.513m [K=1.0000]
 Remarks:

UGR(Unified Glare Rating) Table

Test:U:120.05V I:0.0258A P:3.0300W PF:0.9783 Freq:60.00Hz										
Lamp Flux:191.609x1 lm										
NAME: ASD-UCS-9D3CC					TYPE: N/A			WEIGHT: N/A		
SPEC.: N/A					DIM.: N/A			SERIAL No.: N/A		
MFR.: ASD Lighting Corp					SUR.: N/A			Shielding Angle: N/A		
ceiling/cavity	0.7	0.7	0.5	0.5	0.3	0.7	0.7	0.5	0.5	0.3
walls	0.5	0.3	0.5	0.3	0.3	0.5	0.3	0.5	0.3	0.3
working plane	0.2	0.2	0.2	0.2	0.2	0.2	0.2	0.2	0.2	0.2
Room dimensions	Viewed crosswise					Viewed endwise				
x = 2H y = 2H	26.3	27.8	26.6	28.0	28.2	26.1	27.6	26.4	27.8	28.0
3H	27.7	29.1	28.0	29.4	29.6	27.5	28.9	27.8	29.1	29.4
4H	28.3	29.6	28.6	29.8	30.1	28.0	29.4	28.3	29.6	29.9
6H	28.6	29.8	28.9	30.1	30.4	28.4	29.6	28.7	29.9	30.2
8H	28.7	29.9	29.0	30.2	30.5	28.4	29.6	28.8	29.9	30.2
12H	28.7	29.9	29.0	30.1	30.5	28.5	29.6	28.8	29.9	30.2
4H 2H	26.9	28.2	27.2	28.4	28.7	26.7	28.0	27.0	28.3	28.5
3H	28.5	29.6	28.8	29.9	30.2	28.3	29.4	28.6	29.7	30.0
4H	29.1	30.2	29.5	30.5	30.8	28.9	30.0	29.3	30.3	30.6
6H	29.5	30.5	29.9	30.8	31.2	29.3	30.3	29.7	30.6	31.0
8H	29.6	30.5	30.1	30.9	31.3	29.5	30.3	29.9	30.7	31.1
12H	29.7	30.5	30.1	30.9	31.3	29.5	30.3	29.9	30.7	31.1
8H 4H	29.3	30.2	29.7	30.5	30.9	29.1	30.0	29.5	30.4	30.8
6H	29.8	30.6	30.3	31.0	31.4	29.7	30.4	30.1	30.8	31.2
8H	30.0	30.7	30.5	31.1	31.5	29.9	30.5	30.3	30.9	31.4
12H	30.1	30.7	30.6	31.1	31.6	29.9	30.5	30.4	31.0	31.4
12H 4H	29.3	30.1	29.7	30.5	30.9	29.1	29.9	29.6	30.3	30.7
6H	29.9	30.5	30.3	30.9	31.4	29.7	30.3	30.2	30.8	31.2
8H	30.1	30.6	30.5	31.1	31.5	29.9	30.5	30.4	30.9	31.4
Variations with the observer position at spacings(CIE Pub.117):										
S = 1.0H	+ 0.2 / - 0.2					+ 0.2 / - 0.2				
1.5H	+ 0.2 / - 0.3					+ 0.2 / - 0.3				
2.0H	+ 0.2 / - 0.3					+ 0.2 / - 0.3				

CIE Pub.117, 191.6 lm Total Lamp Luminous Flux Correct (8log(F/F0) = -5.7)
 Area: 0.006355 m2

C Range: 0 - 360DEG
 C Interval: 22.5DEG
 Test Speed: HIGH
 Temperature:24.8DEG
 Operators:Water
 Test Date:2023-09-06

γ Range: 0 - 180DEG
 γ Interval: 1.0DEG
 Test System:EVERFINE GO-R5000_V2 SYSTEM V2.00.446
 Humidity:34%
 Test Distance:2.513m [K=1.0000]
 Remarks:

UTILIZATION FACTORS TABLE

Test:U:120.05V I:0.0258A P:3.0300W PF:0.9783 Freq:60.00Hz Lamp Flux:191.609x1 lm		
NAME: ASD-UCS-9D3CC	TYPE: N/A	WEIGHT: N/A
SPEC.: N/A	DIM.: N/A	SERIAL No.: N/A
MFR.: ASD Lighting Corp	SUR.: N/A	Shielding Angle: N/A

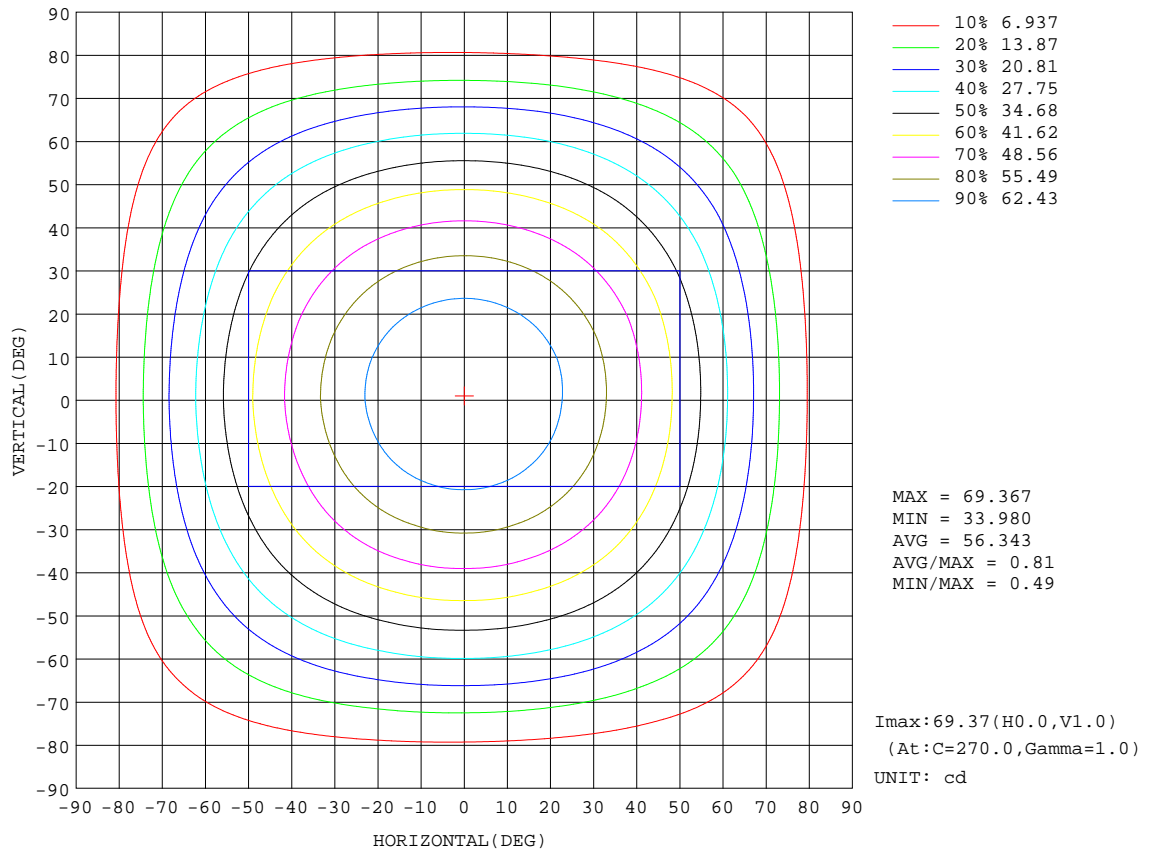
REFLECTANCE										
Ceiling	0.8	0.8	0.8	0.7	0.7	0.7	0.5	0.5	0.5	0
Walls	0.7	0.5	0.3	0.7	0.5	0.3	0.7	0.5	0.3	0
Working plane	0.2	0.2	0.2	0.2	0.2	0.2	0.2	0.2	0.2	0
ROOM INDEX	UTILIZATION FACTORS(PERCENT) k(RI) x RCR = 5									
k = 0.60	58	46	39	57	46	39	56	46	39	33
0.80	68	56	49	67	56	49	65	55	49	42
1.00	76	65	58	75	65	58	73	66	57	50
1.25	83	73	66	82	72	66	79	71	65	57
1.50	88	79	72	87	78	71	84	76	70	63
2.00	95	87	80	93	86	80	90	83	78	70
2.50	99	91	85	97	90	85	93	87	83	74
3.00	102	96	90	100	94	89	96	91	87	79
4.00	106	101	96	104	99	95	100	96	92	83
5.00	109	104	100	106	102	99	102	98	95	86
ROOM INDEX	UF(total)									Direct
According to DIN EN 13032-2 2004			Suspended				SHRNOM = 1.25			

C Range: 0 - 360DEG
 C Interval: 22.5DEG
 Test Speed: HIGH
 Temperature:24.8DEG
 Operators:Water
 Test Date:2023-09-06

γ Range: 0 - 180DEG
 γ Interval: 1.0DEG
 Test System:EVERFINE GO-R5000_V2 SYSTEM V2.00.446
 Humidity:34%
 Test Distance:2.513m [K=1.0000]
 Remarks:

ISOCANDELA DIAGRAM

Test:U:120.05V I:0.0258A P:3.0300W PF:0.9783 Freq:60.00Hz Lamp Flux:191.609x1 lm		
NAME: ASD-UCS-9D3CC	TYPE: N/A	WEIGHT: N/A
SPEC.: N/A	DIM.: N/A	SERIAL No.: N/A
MFR.: ASD Lighting Corp	SUR.: N/A	Shielding Angle: N/A

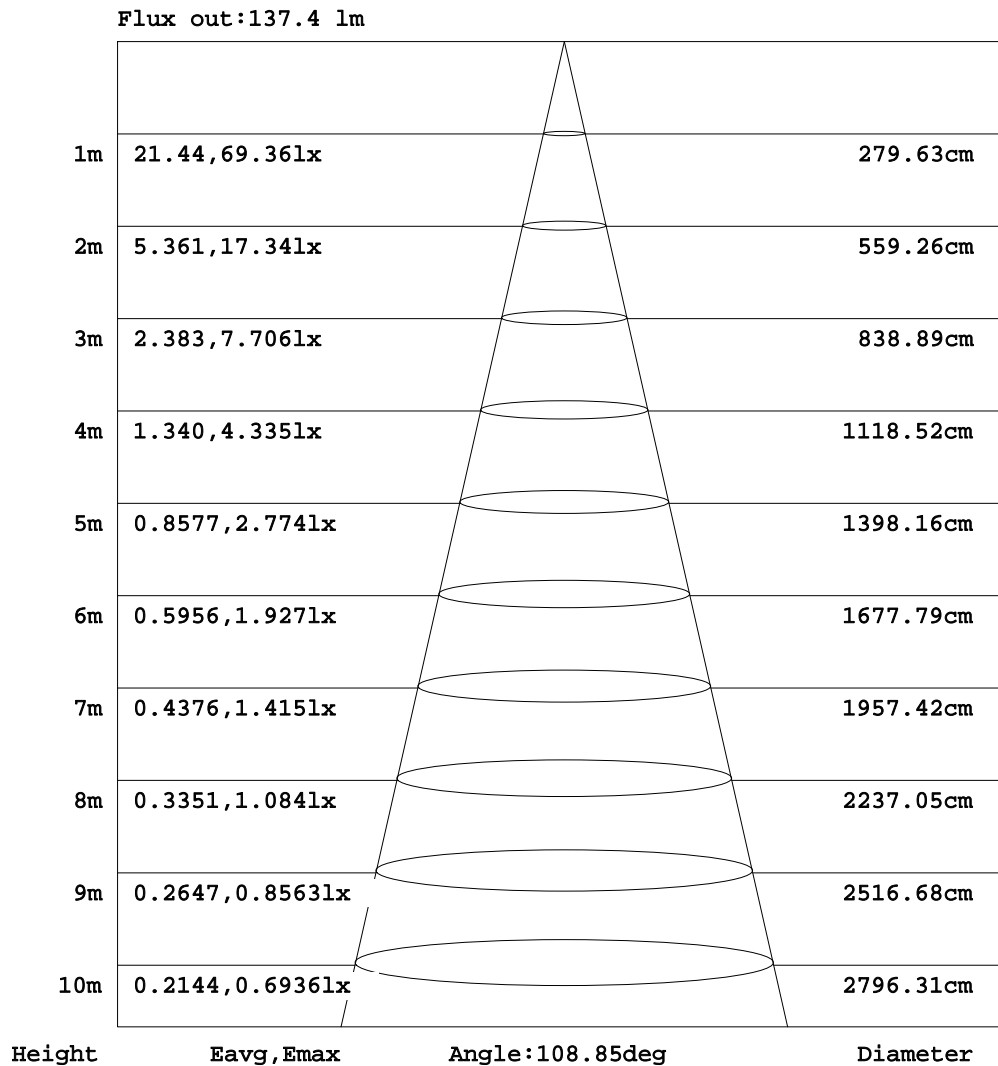


C Range: 0 - 360DEG
 C Interval: 22.5DEG
 Test Speed: HIGH
 Temperature: 24.8DEG
 Operators: Water
 Test Date: 2023-09-06

γ Range: 0 - 180DEG
 γ Interval: 1.0DEG
 Test System: EVERFINE GO-R5000_V2 SYSTEM V2.00.446
 Humidity: 34%
 Test Distance: 2.513m [K=1.0000]
 Remarks:

AAI Figure

Test:U:120.05V I:0.0258A P:3.0300W PF:0.9783 Freq:60.00Hz Lamp Flux:191.609x1 lm		
NAME: ASD-UCS-9D3CC	TYPE: N/A	WEIGHT: N/A
SPEC.: N/A	DIM.: N/A	SERIAL No.: N/A
MFR.: ASD Lighting Corp	SUR.: N/A	Shielding Angle: N/A



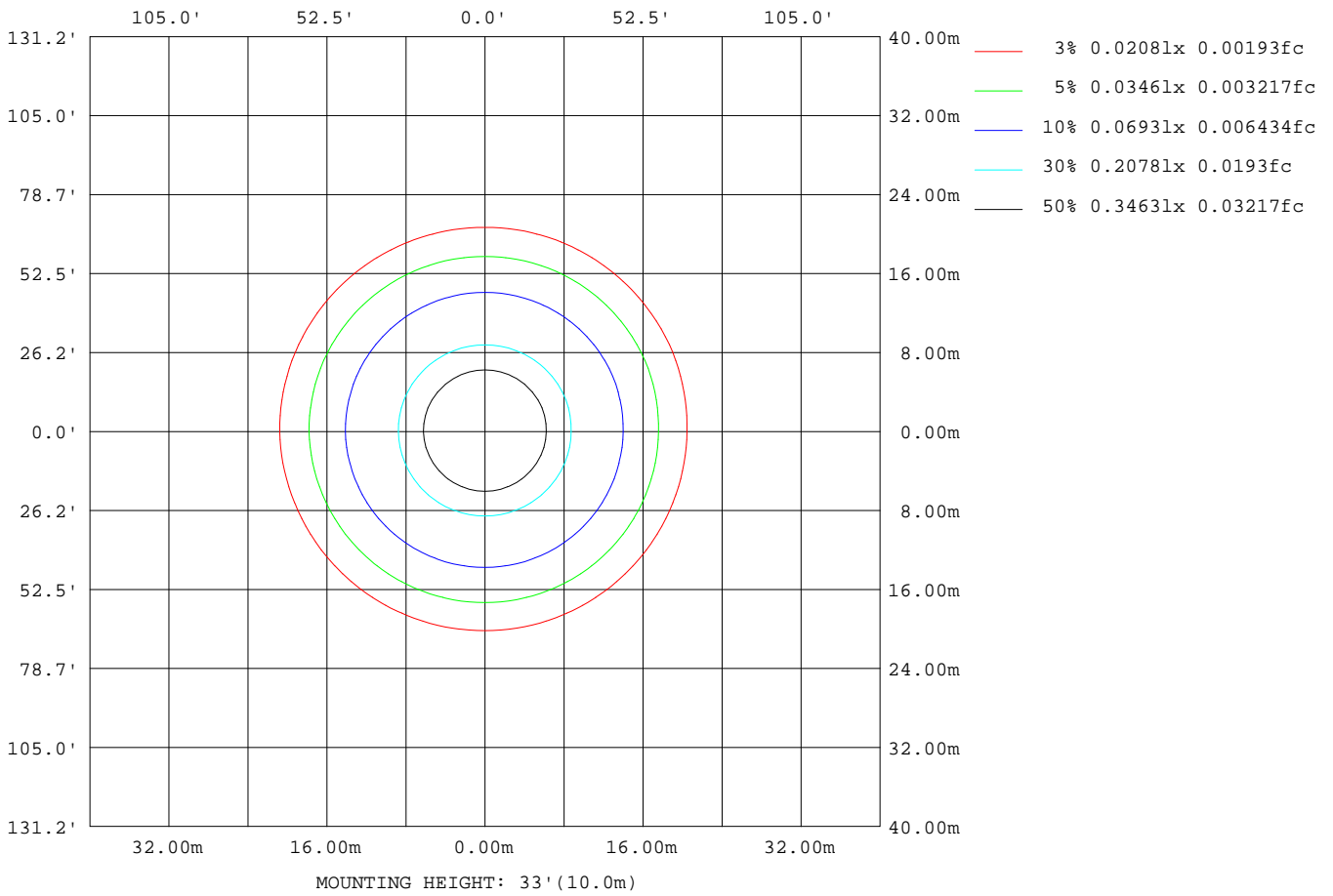
Note:The Curves indicate the illuminated area and the average illumination when the luminaire is at different distance.

C Range: 0 - 360DEG
 C Interval: 22.5DEG
 Test Speed: HIGH
 Temperature:24.8DEG
 Operators:Water
 Test Date:2023-09-06

γ Range: 0 - 180DEG
 γ Interval: 1.0DEG
 Test System:EVERFINE GO-R5000_V2 SYSTEM V2.00.446
 Humidity:34%
 Test Distance:2.513m [K=1.0000]
 Remarks:

ISOLUX DIAGRAM

Test:U:120.05V I:0.0258A P:3.0300W PF:0.9783 Freq:60.00Hz Lamp Flux:191.609x1 lm		
NAME: ASD-UCS-9D3CC	TYPE: N/A	WEIGHT: N/A
SPEC.: N/A	DIM.: N/A	SERIAL No.: N/A
MFR.: ASD Lighting Corp	SUR.: N/A	Shielding Angle: N/A



C Range: 0 - 360DEG
 C Interval: 22.5DEG
 Test Speed: HIGH
 Temperature:24.8DEG
 Operators:Water
 Test Date:2023-09-06

γ Range: 0 - 180DEG
 γ Interval: 1.0DEG
 Test System:EVERFINE GO-R5000_V2 SYSTEM V2.00.446
 Humidity:34%
 Test Distance:2.513m [K=1.0000]
 Remarks:

LED Avg.L Report

Test:U:120.05V I:0.0258A P:3.0300W PF:0.9783 Freq:60.00Hz Lamp Flux:191.609x1 lm		
NAME: ASD-UCS-9D3CC	TYPE: N/A	WEIGHT: N/A
SPEC.: N/A	DIM.: N/A	SERIAL No.: N/A
MFR.: ASD Lighting Corp	SUR.: N/A	Shielding Angle: N/A

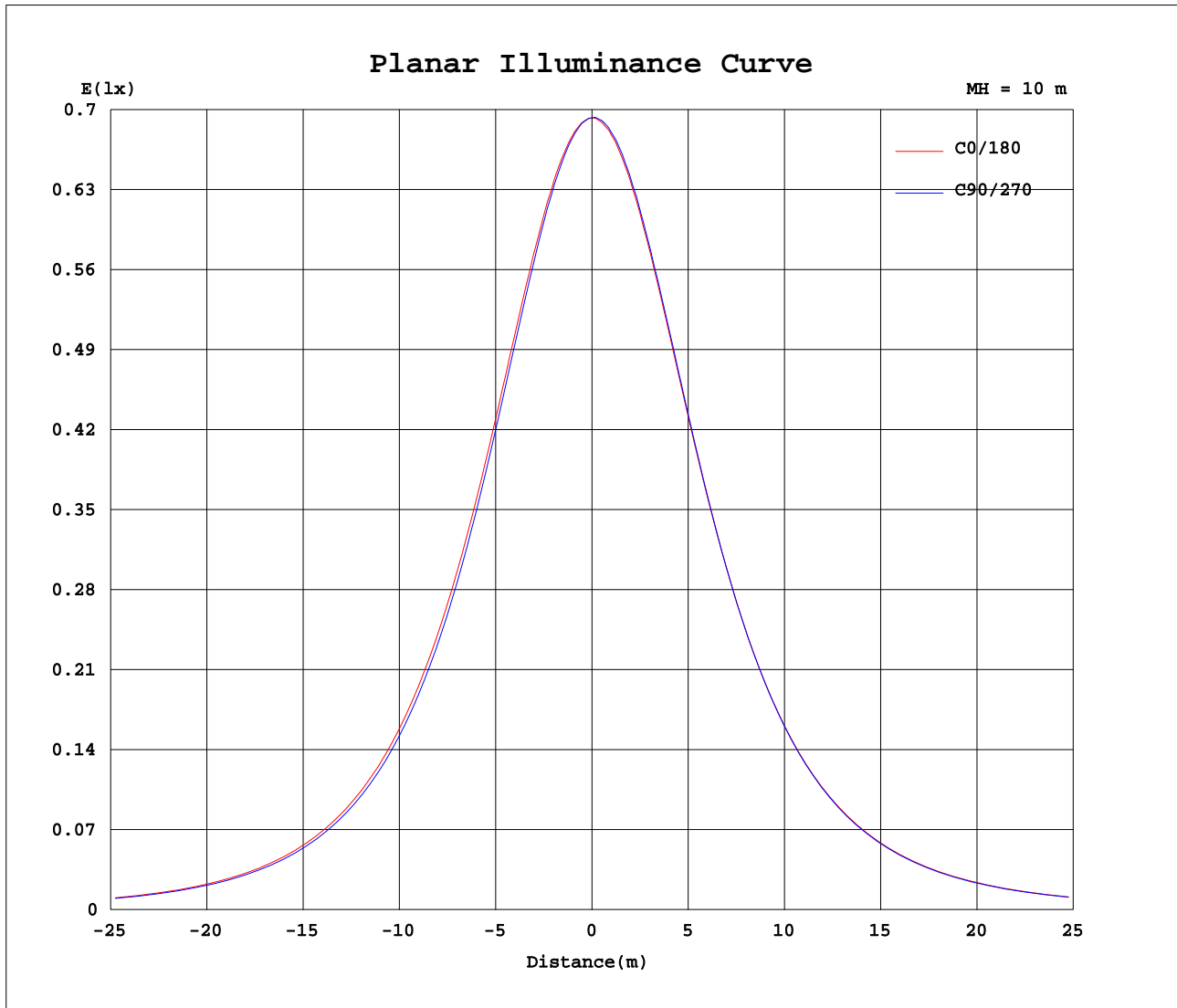
AvgL	cd/m2
L_0~180(65)av	8922
L_0~180(75)av	7581
L_0~180(85)av	4688
L_90~270(65)av	8626
L_90~270(75)av	7336
L_90~270(85)av	4443
L_45(65)av	8764
L_45(75)av	7447
L_45(85)av	4421

Standard: GB/T 29293-2012

C Range: 0 - 360DEG
 C Interval: 22.5DEG
 Test Speed: HIGH
 Temperature:24.8DEG
 Operators:Water
 Test Date:2023-09-06

γ Range: 0 - 180DEG
 γ Interval: 1.0DEG
 Test System:EVERFINE GO-R5000_V2 SYSTEM V2.00.446
 Humidity:34%
 Test Distance:2.513m [K=1.0000]
 Remarks:

Planar Illuminance Curve



C Range: 0 - 360DEG
 C Interval: 22.5DEG
 Test Speed: HIGH
 Temperature: 24.8DEG
 Operators: Water
 Test Date: 2023-09-06

γ Range: 0 - 180DEG
 γ Interval: 1.0DEG
 Test System: EVERFINE GO-R5000_V2 SYSTEM V2.00.446
 Humidity: 34%
 Test Distance: 2.513m [K=1.0000]
 Remarks:

LUMINOUS DISTRIBUTION INTENSITY DATA

Test:U:120.05V I:0.0258A P:3.0300W PF:0.9783 Freq:60.00Hz Lamp Flux:191.609x1 lm		
NAME: ASD-UCS-9D3CC	TYPE: N/A	WEIGHT: N/A
SPEC.: N/A	DIM.: N/A	SERIAL No.: N/A
MFR.: ASD Lighting Corp	SUR.: N/A	Shielding Angle: N/A

Table--1

UNIT: cd

C(DEG) γ (DEG)	0	22.5	45	67.5	90	112.5	135	157.5	180	202.5	225	247.5	270	292.5	315	337.5			
0	69.3	69.3	69.3	69.3	69.3	69.3	69.3	69.3	69.3	69.3	69.3	69.3	69.3	69.3	69.3	69.3			
5	69.0	68.9	68.8	68.8	68.7	68.7	68.7	68.8	69.0	69.1	69.1	69.2	69.2	69.1	69.1	69.0			
10	67.9	67.7	67.5	67.4	67.4	67.5	67.6	67.7	68.0	68.0	68.2	68.2	68.2	68.2	68.2	68.1			
15	66.2	66.0	65.7	65.5	65.5	65.5	65.7	66.0	66.3	66.5	66.6	66.7	66.7	66.7	66.6	66.5			
20	63.9	63.5	63.2	63.0	62.9	63.0	63.3	63.6	64.1	64.3	64.4	64.4	64.4	64.4	64.4	64.2			
25	61.1	60.7	60.2	59.8	59.7	59.9	60.2	60.6	61.3	61.5	61.6	61.6	61.6	61.6	61.6	61.5			
30	57.7	57.2	56.6	56.3	56.1	56.3	56.8	57.2	58.0	58.2	58.2	58.2	58.2	58.2	58.2	58.1			
35	53.9	53.3	52.7	52.2	52.1	52.3	52.8	53.3	54.2	54.4	54.4	54.3	54.3	54.4	54.4	54.4			
40	49.5	49.0	48.4	47.9	47.7	48.0	48.5	49.1	50.0	50.3	50.2	50.1	50.0	50.1	50.2	50.2			
45	44.8	44.3	43.7	43.2	43.0	43.3	43.8	44.6	45.5	45.7	45.6	45.4	45.4	45.5	45.6	45.6			
50	39.8	39.3	38.8	38.3	38.1	38.4	39.0	39.7	40.7	40.9	40.7	40.5	40.4	40.5	40.7	40.5			
55	34.5	34.0	33.5	33.1	32.9	33.2	33.8	34.6	35.6	35.7	35.6	35.4	35.2	35.3	35.4	35.3			
60	29.0	28.5	28.0	27.7	27.6	27.9	28.5	29.2	30.2	30.4	30.2	30.0	29.8	29.9	29.8	29.7			
65	23.2	22.8	22.4	22.2	22.1	22.4	23.0	23.7	24.7	24.8	24.6	24.4	24.2	24.3	24.1	24.0			
70	17.4	17.0	16.7	16.6	16.6	16.9	17.5	18.1	19.0	19.2	19.0	18.7	18.5	18.6	18.4	18.2			
75	11.7	11.4	11.1	11.1	11.2	11.5	12.0	12.4	13.2	13.4	13.3	13.1	12.9	12.9	12.6	12.4			
80	6.48	6.15	5.95	6.06	6.27	6.51	6.82	7.08	7.70	7.85	7.85	7.74	7.57	7.39	7.27	7.08			
85	2.14	1.82	1.93	1.97	2.09	2.24	2.41	2.57	3.06	3.13	2.99	2.95	2.83	2.59	2.46	2.63			
90	0.00	0.00	0.00	0.00	0.00	0.00	0.01	0.02	0.07	0.04	0.01	0.00	0.00	0.00	0.00	0.00			
95	0.01	0.01	0.00	0.00	0.00	0.00	0.00	0.00	0.00	0.00	0.00	0.00	0.00	0.00	0.00	0.00			
100	0.01	0.01	0.01	0.01	0.01	0.02	0.03	0.02	0.00	0.00	0.00	0.00	0.00	0.00	0.00	0.00			
105	0.01	0.01	0.01	0.01	0.01	0.02	0.02	0.02	0.00	0.00	0.00	0.00	0.00	0.00	0.00	0.00			
110	0.01	0.01	0.01	0.01	0.01	0.02	0.02	0.02	0.01	0.00	0.00	0.00	0.00	0.00	0.00	0.00			
115	0.02	0.02	0.02	0.02	0.02	0.02	0.02	0.02	0.01	0.00	0.00	0.00	0.00	0.00	0.00	0.00			
120	0.02	0.02	0.02	0.02	0.02	0.02	0.03	0.02	0.01	0.01	0.01	0.01	0.01	0.01	0.01	0.01			
125	0.02	0.03	0.03	0.03	0.03	0.03	0.03	0.03	0.01	0.01	0.01	0.01	0.01	0.01	0.01	0.01			
130	0.03	0.03	0.03	0.03	0.04	0.04	0.04	0.04	0.02	0.01	0.01	0.02	0.01	0.01	0.01	0.02			
135	0.04	0.04	0.04	0.05	0.05	0.05	0.05	0.04	0.02	0.02	0.02	0.02	0.02	0.02	0.02	0.02			
140	0.06	0.06	0.06	0.06	0.07	0.07	0.06	0.06	0.02	0.02	0.02	0.02	0.02	0.02	0.02	0.02			
145	0.07	0.07	0.08	0.08	0.09	0.08	0.08	0.07	0.03	0.03	0.03	0.03	0.03	0.03	0.03	0.03			
150	0.08	0.09	0.09	0.10	0.10	0.10	0.09	0.09	0.03	0.03	0.03	0.03	0.04	0.03	0.03	0.04			
155	0.10	0.11	0.11	0.11	0.11	0.11	0.11	0.10	0.04	0.04	0.04	0.04	0.04	0.04	0.04	0.04			
160	0.11	0.11	0.11	0.12	0.11	0.12	0.12	0.11	0.05	0.05	0.05	0.05	0.05	0.05	0.05	0.05			
165	0.11	0.11	0.11	0.12	0.12	0.12	0.12	0.11	0.05	0.05	0.05	0.05	0.05	0.05	0.05	0.06			
170	0.10	0.11	0.11	0.11	0.11	0.11	0.11	0.10	0.06	0.06	0.06	0.06	0.06	0.06	0.06	0.06			
175	0.10	0.10	0.10	0.10	0.09	0.09	0.10	0.10	0.07	0.07	0.07	0.07	0.07	0.06	0.07	0.07			
180	0.08	0.08	0.08	0.08	0.08	0.08	0.08	0.09	0.08	0.08	0.08	0.08	0.08	0.08	0.08	0.09			

C Range: 0 - 360DEG
 C Interval: 22.5DEG
 Test Speed: HIGH
 Temperature:24.8DEG
 Operators:Water
 Test Date:2023-09-06

γ Range: 0 - 180DEG
 γ Interval: 1.0DEG
 Test System:EVERFINE GO-R5000_V2 SYSTEM V2.00.446
 Humidity:34%
 Test Distance:2.513m [K=1.0000]
 Remarks: