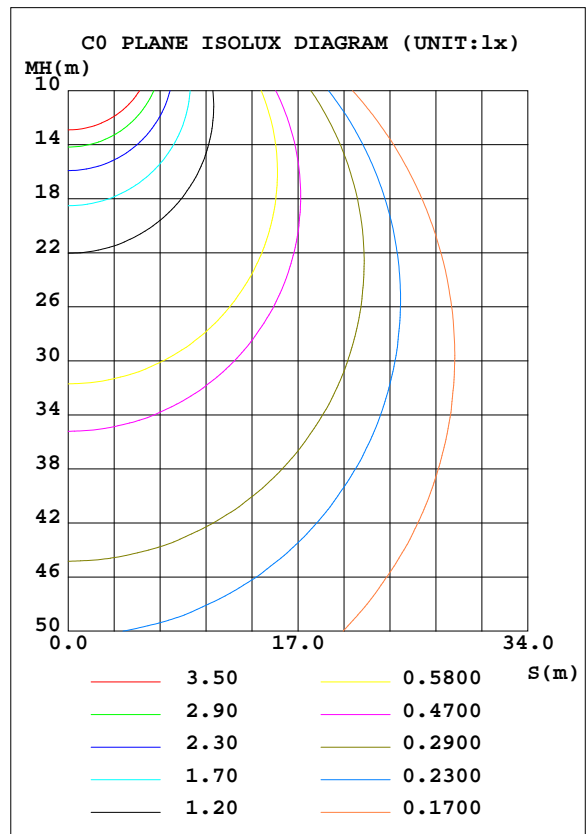
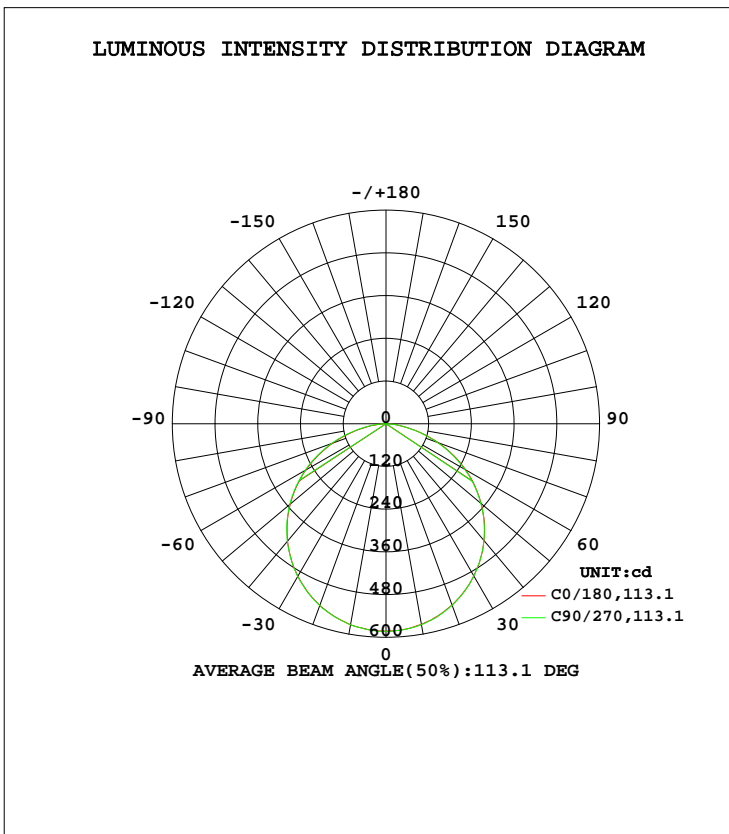


LUMINAIRE PHOTOMETRIC TEST REPORT

Test:U:120.0V I:0.1617A P:19.17W PF:0.9885 Lamp Flux:1437x1 lm		
NAME: ASD-MPR-9D18CC-EM-WH 5000K	TYPE:N/A	WEIGHT:N/A
SPEC.:N/A	DIM.: N/A	SERIAL No.:N/A
MFR.: ASD Lighting corp	SUR.:N/A	Shielding Angle:N/A

DATA OF LAMP		PHOTOMETRIC DATA Eff: 74.96 lm/W			
MODEL ASD-MPR-9D18CC-EM-WH		I _{max} (cd)	583.3	S/MH(C0/180)	1.26
NOMINAL POWER(W)		LOR(%)	100.0	S/MH(C90/270)	1.26
RATED VOLTAGE(V)	120	TOTAL FLUX(lm)	1437	η UP, DN(C0-180)	0.1,50.4
NOMINAL FLUX(lm)	1437	CIE CLASS	DIRECT	η UP, DN(C180-360)	0.0,49.5
LAMPS INSIDE	1	η up(%)	0.1	CIBSE SHR NOM	1.25
TEST VOLTAGE(V)	120	η down(%)	99.9	CIBSE SHR MAX	1.35



C Range: 0 - 360DEG
 C Interval: 22.5DEG
 Test Speed: HIGH
 Temperature:25.4DEG
 Operators:Carl
 Test Date:2022-06-02

γ Range: 0 - 180DEG
 γ Interval: 1.0DEG
 Test System:EVERFINE GO-R5000_V2 SYSTEM V2.0.351
 Humidity:39%
 Test Distance:2.526m [K=1.0000]
 Remarks:

ZONAL FLUX DIAGRAM

ZONAL FLUX DIAGRAM:

γ	C0	C45	C90	C135	C180	C225	C270	C315	γ	Φ zone	Φ total	%lum, lamp
10	573.5	573.4	573.2	573.3	572.4	572.3	572.8	572.9	0- 10	55.15	55.15	3.31,3.31
20	543.3	543.3	543.6	544.3	542.3	542.1	542.9	542.0	10- 20	158.1	213.3	12.8,12.8
30	495.4	494.9	495.8	495.9	493.4	493.3	493.5	493.1	20- 30	240.0	453.3	27.2,27.2
40	430.5	430.9	431.4	431.8	428.6	428.3	427.9	427.7	30- 40	290.1	743.4	44.6,44.6
50	351.4	352.0	353.1	353.8	349.1	348.3	347.8	347.4	40- 50	301.9	1045	62.7,62.7
60	260.3	261.5	262.4	263.1	257.8	256.3	255.3	254.9	50- 60	273.2	1319	79.1,79.1
70	159.0	161.4	162.9	163.6	156.6	155.6	153.8	154.0	60- 70	206.9	1525	91.6,91.6
80	59.60	63.15	65.27	64.56	57.61	56.84	56.03	55.04	70- 80	113.4	1639	98.4,98.4
90	0.1031	0.1621	2.517	0.1595	0.0321	0.0321	0.0332	0.0334	80- 90	25.52	1664	99.9,99.9
100	0.1487	0.1627	0.1511	0.1618	0.0624	0.0752	0.0669	0.0752	90-100	0.1062	1664	99.9,99.9
110	0.1750	0.1841	0.1831	0.1861	0.1032	0.1129	0.1098	0.1087	100-110	0.1364	1665	99.9,99.9
120	0.2323	0.2331	0.2368	0.2387	0.1614	0.1597	0.1590	0.1592	110-120	0.1672	1665	99.9,99.9
130	0.3381	0.3395	0.3473	0.3485	0.2312	0.2248	0.2227	0.2232	120-130	0.2127	1665	99.9,99.9
140	0.5259	0.5647	0.5711	0.5553	0.2955	0.2973	0.2973	0.2926	130-140	0.2683	1665	99.9,99.9
150	0.7595	0.8401	0.8488	0.8222	0.3543	0.3652	0.3684	0.3637	140-150	0.3205	1666	100,100
160	0.9671	0.9937	1.011	1.012	0.4761	0.4705	0.4654	0.4581	150-160	0.3086	1666	100,100
170	0.9218	0.9186	0.9306	0.9399	0.5764	0.5470	0.5325	0.5453	160-170	0.2113	1666	100,100
180	0.7830	0.7379	0.7288	0.7883	0.7829	0.7615	0.7223	0.7493	170-180	0.0714	1666	100,100
DEG	LUMINOUS INTENSITY:cd									UNIT:lm		

Conical surface Flux(90deg): 895.44 lm

%lum = 53.7%

%lamp = 53.7%

Conical surface Flux(120deg): 1318.5 lm

%lum = 79.1%

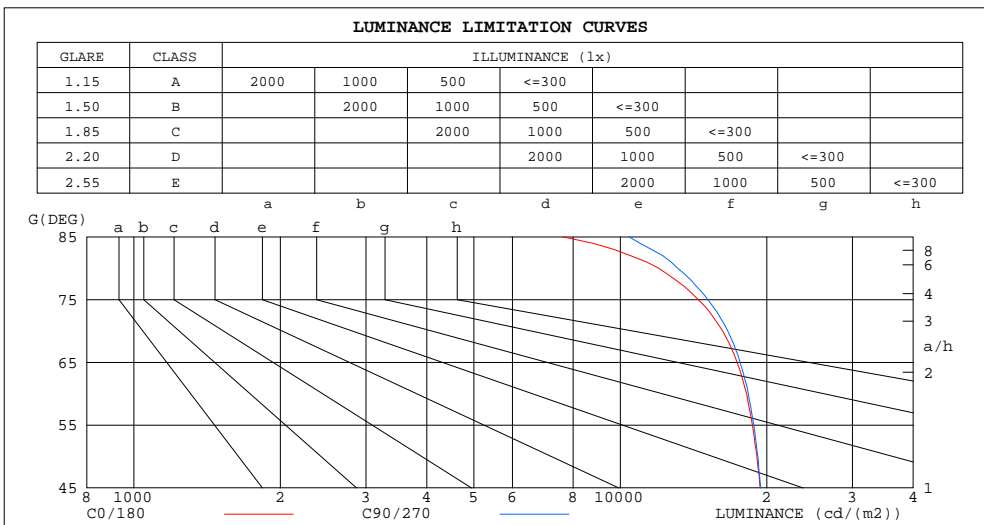
%lamp = 79.1%

C Range: 0 - 360DEG
 C Interval: 22.5DEG
 Test Speed: HIGH
 Temperature:25.4DEG
 Operators:Carl
 Test Date:2022-06-02

γ Range: 0 - 180DEG
 γ Interval: 1.0DEG
 Test System:EVERFINE GO-R5000_V2 SYSTEM V2.0.351
 Humidity:39%
 Test Distance:2.526m [K=1.0000]
 Remarks:

LUMINANCE LIMITATION CURVES

Test:U:120.0V I:0.1617A P:19.17W PF:0.9885 Lamp Flux:1437x1 lm		
NAME: ASD-MPR-9D18CC-EM-WH 5000K	TYPE:N/A	WEIGHT:N/A
SPEC.:N/A	DIM.: N/A	SERIAL No.:N/A
MFR.: ASD Lighting corp	SUR.:N/A	Shielding Angle:N/A



LUMINANCE cd/(m2)		
G(DEG)	C0/180	C90/270
85	7622	10418
80	11987	13120
75	14469	15133
70	16234	16625
65	17377	17627
60	18183	18320
55	18684	18801
50	19093	19173
45	19380	19444

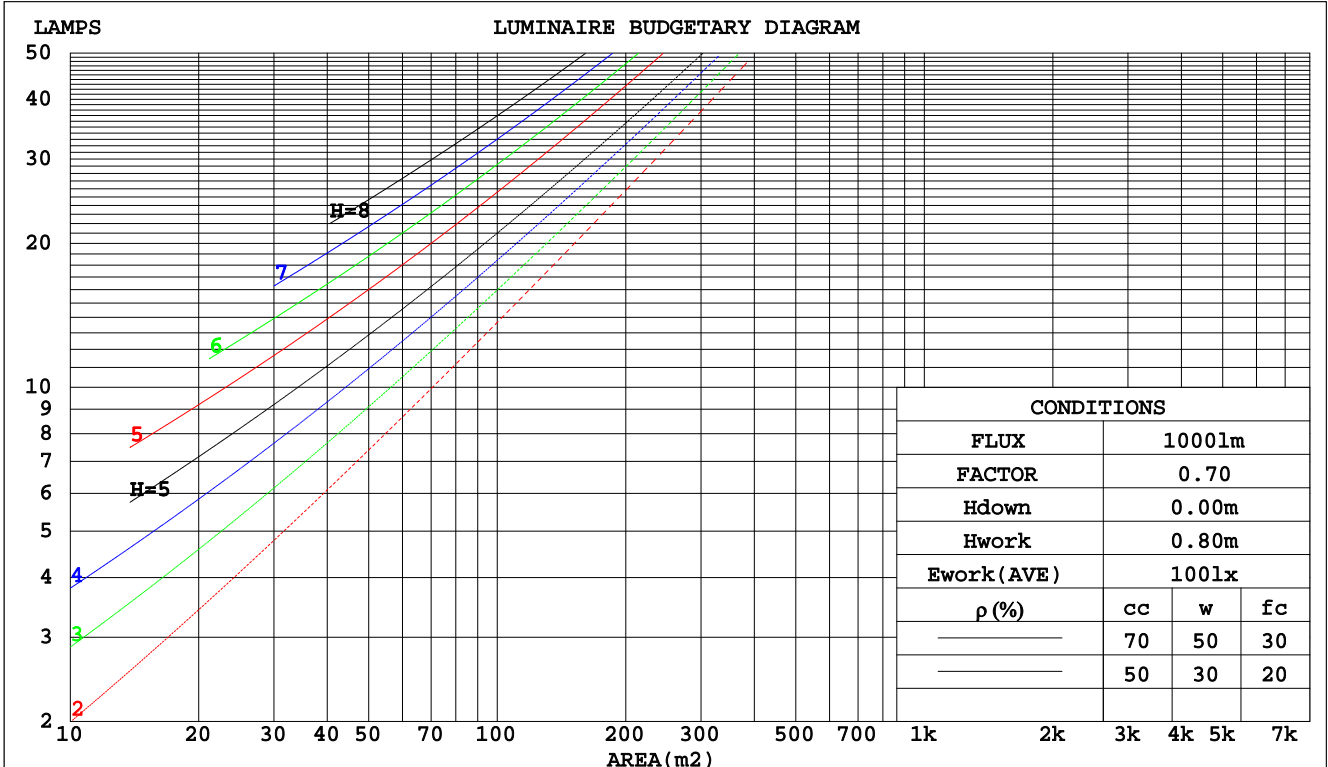
C Range: 0 - 360DEG
 C Interval: 22.5DEG
 Test Speed: HIGH
 Temperature:25.4DEG
 Operators:Carl
 Test Date:2022-06-02

γ Range: 0 - 180DEG
 γ Interval: 1.0DEG
 Test System:EVERFINE GO-R5000_V2 SYSTEM V2.0.351
 Humidity:39%
 Test Distance:2.526m [K=1.0000]
 Remarks:

CU AND LUMINAIRE BUDGETARY ESTIMATE DIAGRAM

Test:U:120.0V I:0.1617A P:19.17W PF:0.9885 Lamp Flux:1437x1 lm		
NAME: ASD-MPR-9D18CC-EM-WH 5000K	TYPE:N/A	WEIGHT:N/A
SPEC.:N/A	DIM.: N/A	SERIAL No.:N/A
MFR.: ASD Lighting corp	SUR.:N/A	Shielding Angle:N/A

pcc	80%			70%			50%			30%			10%			0
	50%	30%	10%	50%	30%	10%	50%	30%	10%	50%	30%	10%	50%	30%	10%	0
pw																0
pfc	20%			20%			20%			20%			20%			0
RCR	RCR:Room Cavity Ratio Coefficients of Utilization(CU)															
0.0	1.19	1.19	1.19	1.16	1.16	1.16	1.11	1.11	1.11	1.06	1.06	1.06	1.02	1.02	1.02	.00
1.0	1.04	.00	.96	1.02	.98	.94	.98	.94	.91	.94	.91	.89	.90	.88	.86	.84
2.0	.91	.84	.78	.89	.82	.77	.85	.80	.75	.82	.77	.74	.79	.75	.72	.70
3.0	.80	.71	.65	.78	.70	.64	.75	.68	.63	.72	.67	.62	.70	.65	.61	.59
4.0	.70	.62	.55	.69	.61	.54	.67	.59	.54	.64	.58	.53	.62	.57	.52	.50
5.0	.63	.54	.47	.62	.53	.47	.60	.52	.46	.58	.51	.46	.56	.50	.45	.43
6.0	.57	.48	.41	.56	.47	.41	.54	.46	.41	.52	.45	.40	.50	.44	.40	.38
7.0	.51	.42	.36	.50	.42	.36	.49	.41	.36	.47	.41	.36	.46	.40	.35	.33
8.0	.47	.38	.32	.46	.38	.32	.45	.37	.32	.43	.37	.32	.42	.36	.32	.30
9.0	.43	.35	.29	.42	.34	.29	.41	.34	.29	.40	.33	.29	.39	.33	.28	.27
10.0	.40	.32	.26	.39	.31	.26	.38	.31	.26	.37	.31	.26	.36	.30	.26	.24



C Range: 0 - 360DEG
 C Interval: 22.5DEG
 Test Speed: HIGH
 Temperature:25.4DEG
 Operators:Carl
 Test Date:2022-06-02

γ Range: 0 - 180DEG
 γ Interval: 1.0DEG
 Test System:EVERFINE GO-R5000_V2 SYSTEM V2.0.351
 Humidity:39%
 Test Distance:2.526m [K=1.0000]
 Remarks:

WEC AND CCEC

Test:U:120.0V I:0.1617A P:19.17W PF:0.9885 Lamp Flux:1437x1 lm		
NAME: ASD-MPR-9D18CC-EM-WH 5000K	TYPE:N/A	WEIGHT:N/A
SPEC.:N/A	DIM.: N/A	SERIAL No.:N/A
MFR.: ASD Lighting corp	SUR.:N/A	Shielding Angle:N/A

ρcc	80%			70%			50%			30%			10%			0
ρw	50%	30%	10%	50%	30%	10%	50%	30%	10%	50%	30%	10%	50%	30%	10%	0
ρfc	20%			20%			20%			20%			20%			0
RCR	RCR:Room Cavity Ratio						Wall Exitance Coefficients(WEC)									
0.0																
1.0	.306	.174	.055	.299	.170	.054	.285	.164	.052	.273	.157	.051	.262	.152	.049	
2.0	.290	.159	.049	.283	.156	.048	.272	.151	.047	.261	.146	.046	.251	.142	.045	
3.0	.269	.143	.043	.263	.141	.042	.253	.137	.042	.243	.133	.041	.234	.130	.040	
4.0	.248	.129	.038	.244	.127	.038	.234	.124	.037	.226	.121	.037	.218	.118	.036	
5.0	.230	.117	.034	.226	.116	.034	.217	.113	.033	.210	.111	.033	.203	.108	.033	
6.0	.213	.107	.031	.209	.106	.030	.202	.104	.030	.195	.102	.030	.189	.100	.030	
7.0	.199	.098	.028	.195	.097	.028	.189	.095	.027	.183	.094	.027	.177	.092	.027	
8.0	.186	.091	.025	.183	.090	.025	.177	.088	.025	.171	.087	.025	.166	.085	.025	
9.0	.174	.084	.023	.171	.083	.023	.166	.082	.023	.161	.081	.023	.156	.079	.023	
10.0	.164	.078	.022	.161	.078	.022	.156	.077	.022	.152	.075	.021	.148	.074	.021	

ρcc	80%			70%			50%			30%			10%			0
ρw	50%	30%	10%	50%	30%	10%	50%	30%	10%	50%	30%	10%	50%	30%	10%	0
ρfc	20%			20%			20%			20%			20%			0
RCR	RCR:Room Cavity Ratio						Ceiling Cavity Exitance Coefficients(CCEC)									
0.0	.191	.191	.191	.163	.163	.163	.112	.112	.112	.064	.064	.064	.020	.020	.020	
1.0	.181	.157	.136	.155	.135	.117	.106	.093	.081	.061	.054	.047	.020	.017	.015	
2.0	.173	.133	.099	.148	.114	.086	.101	.079	.060	.058	.046	.035	.019	.015	.011	
3.0	.165	.115	.075	.142	.099	.065	.097	.069	.046	.056	.040	.027	.018	.013	.009	
4.0	.158	.102	.059	.135	.088	.051	.093	.061	.036	.054	.036	.021	.017	.012	.007	
5.0	.150	.091	.048	.129	.079	.042	.089	.055	.030	.051	.032	.018	.017	.011	.006	
6.0	.143	.083	.040	.123	.072	.035	.085	.050	.025	.049	.030	.015	.016	.010	.005	
7.0	.136	.076	.034	.117	.066	.030	.081	.046	.021	.047	.027	.013	.015	.009	.004	
8.0	.130	.070	.030	.112	.061	.026	.077	.043	.018	.045	.025	.011	.015	.008	.004	
9.0	.124	.065	.026	.107	.057	.023	.074	.040	.016	.043	.024	.010	.014	.008	.003	
10.0	.118	.061	.023	.102	.053	.020	.071	.037	.014	.041	.022	.009	.013	.007	.003	

C Range: 0 - 360DEG
 C Interval: 22.5DEG
 Test Speed: HIGH
 Temperature:25.4DEG
 Operators:Carl
 Test Date:2022-06-02

γ Range: 0 - 180DEG
 γ Interval: 1.0DEG
 Test System:EVERFINE GO-R5000_V2 SYSTEM V2.0.351
 Humidity:39%
 Test Distance:2.526m [K=1.0000]
 Remarks:

UGR(Unified Glare Rating) Table

Test:U:120.0V I:0.1617A P:19.17W PF:0.9885 Lamp Flux:1437x1 lm										
NAME: ASD-MPR-9D18CC-EM-WH 5000K					TYPE:N/A			WEIGHT:N/A		
SPEC.:N/A					DIM.: N/A			SERIAL No.:N/A		
MFR.: ASD Lighting corp					SUR.:N/A			Shielding Angle:N/A		
ceiling/cavity	0.7	0.7	0.5	0.5	0.3	0.7	0.7	0.5	0.5	0.3
walls	0.5	0.3	0.5	0.3	0.3	0.5	0.3	0.5	0.3	0.3
working plane	0.2	0.2	0.2	0.2	0.2	0.2	0.2	0.2	0.2	0.2
Room dimensions	Viewed crosswise					Viewed endwise				
x = 2H y = 2H	23.1	24.6	23.4	24.8	25.0	23.1	24.7	23.4	24.9	25.1
3H	24.6	26.0	24.9	26.2	26.5	24.7	26.1	25.0	26.3	26.5
4H	25.1	26.5	25.5	26.7	27.0	25.2	26.6	25.6	26.8	27.1
6H	25.5	26.8	25.8	27.0	27.3	25.6	26.9	26.0	27.2	27.4
8H	25.6	26.8	25.9	27.1	27.4	25.7	27.0	26.1	27.2	27.5
12H	25.6	26.8	26.0	27.1	27.4	25.8	27.0	26.2	27.3	27.6
4H 2H	23.7	25.1	24.0	25.3	25.6	23.7	25.1	24.1	25.3	25.6
3H	25.4	26.6	25.7	26.9	27.2	25.4	26.6	25.8	26.9	27.2
4H	26.1	27.1	26.4	27.4	27.8	26.1	27.2	26.5	27.5	27.9
6H	26.5	27.5	26.9	27.8	28.2	26.7	27.6	27.1	28.0	28.3
8H	26.6	27.5	27.1	27.9	28.3	26.8	27.7	27.2	28.1	28.5
12H	26.7	27.5	27.1	27.9	28.3	26.9	27.7	27.3	28.1	28.5
8H 4H	26.3	27.2	26.7	27.6	27.9	26.4	27.3	26.8	27.6	28.0
6H	26.9	27.6	27.3	28.0	28.5	27.0	27.8	27.5	28.2	28.6
8H	27.1	27.7	27.6	28.2	28.6	27.3	27.9	27.7	28.4	28.8
12H	27.2	27.8	27.7	28.2	28.7	27.4	28.0	27.9	28.4	28.9
12H 4H	26.3	27.1	26.7	27.5	27.9	26.4	27.2	26.8	27.6	28.0
6H	27.0	27.6	27.4	28.0	28.5	27.1	27.7	27.5	28.2	28.6
8H	27.2	27.7	27.7	28.2	28.7	27.4	27.9	27.8	28.4	28.8
Variations with the observer position at spacings:										
S = 1.0H	+ 0.2 / - 0.2					+ 0.2 / - 0.2				
1.5H	+ 0.2 / - 0.3					+ 0.2 / - 0.3				
2.0H	+ 0.2 / - 0.3					+ 0.2 / - 0.3				

CIE Pub.117 Corrected 1666 lm Total Lamp Luminous Flux.(8log(F/F0) = 1.8)

C Range: 0 - 360DEG
 C Interval: 22.5DEG
 Test Speed: HIGH
 Temperature:25.4DEG
 Operators:Carl
 Test Date:2022-06-02

γ Range: 0 - 180DEG
 γ Interval: 1.0DEG
 Test System:EVERFINE GO-R5000_V2 SYSTEM V2.0.351
 Humidity:39%
 Test Distance:2.526m [K=1.0000]
 Remarks:

UTILIZATION FACTORS TABLE

Test:U:120.0V I:0.1617A P:19.17W PF:0.9885 Lamp Flux:1437x1 lm		
NAME: ASD-MPR-9D18CC-EM-WH 5000K	TYPE:N/A	WEIGHT:N/A
SPEC.:N/A	DIM.: N/A	SERIAL No.:N/A
MFR.: ASD Lighting corp	SUR.:N/A	Shielding Angle:N/A

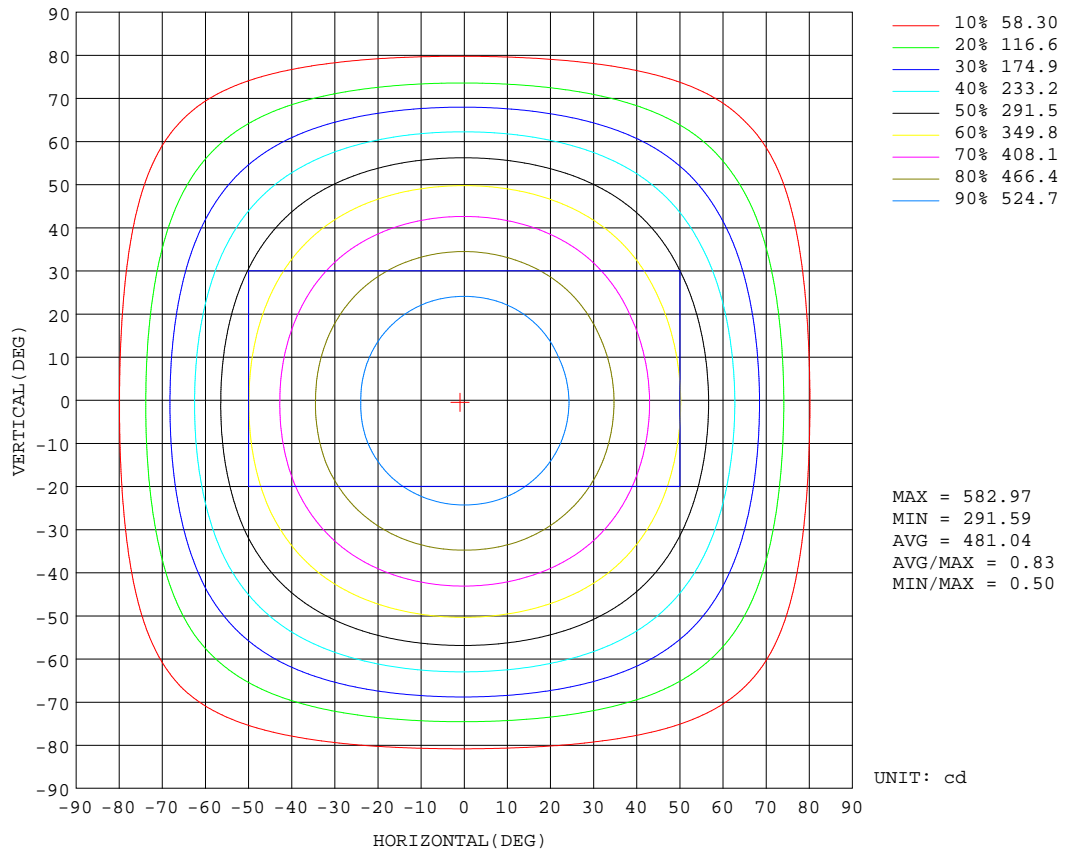
REFLECTANCE										
Ceiling	0.8	0.8	0.8	0.7	0.7	0.7	0.5	0.5	0.5	0
Walls	0.7	0.5	0.3	0.7	0.5	0.3	0.7	0.5	0.3	0
Working plane	0.2	0.2	0.2	0.2	0.2	0.2	0.2	0.2	0.2	0
ROOM INDEX	UTILIZATION FACTORS(PERCENT) $k(RI) \times RCR = 5$									
k = 0.60	57	46	39	57	46	39	56	45	39	32
0.80	68	56	49	67	56	48	65	55	48	41
1.00	76	65	58	75	64	57	73	66	57	50
1.25	83	73	66	82	72	65	79	71	64	57
1.50	88	78	71	87	77	71	83	76	70	62
2.00	95	87	80	93	85	79	90	83	78	70
2.50	99	91	85	97	90	84	93	87	82	74
3.00	102	96	90	100	94	89	96	91	87	78
4.00	106	101	96	104	99	95	100	96	92	83
5.00	109	104	100	106	102	98	102	98	95	86
ROOM INDEX	UF(total)									Direct
According to DIN EN 13032-2 2004			Suspended				SHRNOM = 1.25			

C Range: 0 - 360DEG
 C Interval: 22.5DEG
 Test Speed: HIGH
 Temperature:25.4DEG
 Operators:Carl
 Test Date:2022-06-02

γ Range: 0 - 180DEG
 γ Interval: 1.0DEG
 Test System:EVERFINE GO-R5000_V2 SYSTEM V2.0.351
 Humidity:39%
 Test Distance:2.526m [K=1.0000]
 Remarks:

ISOCANDELA DIAGRAM

Test:U:120.0V I:0.1617A P:19.17W PF:0.9885 Lamp Flux:1437x1 lm		
NAME: ASD-MPR-9D18CC-EM-WH 5000K	TYPE:N/A	WEIGHT:N/A
SPEC.:N/A	DIM.: N/A	SERIAL No.:N/A
MFR.: ASD Lighting corp	SUR.:N/A	Shielding Angle:N/A

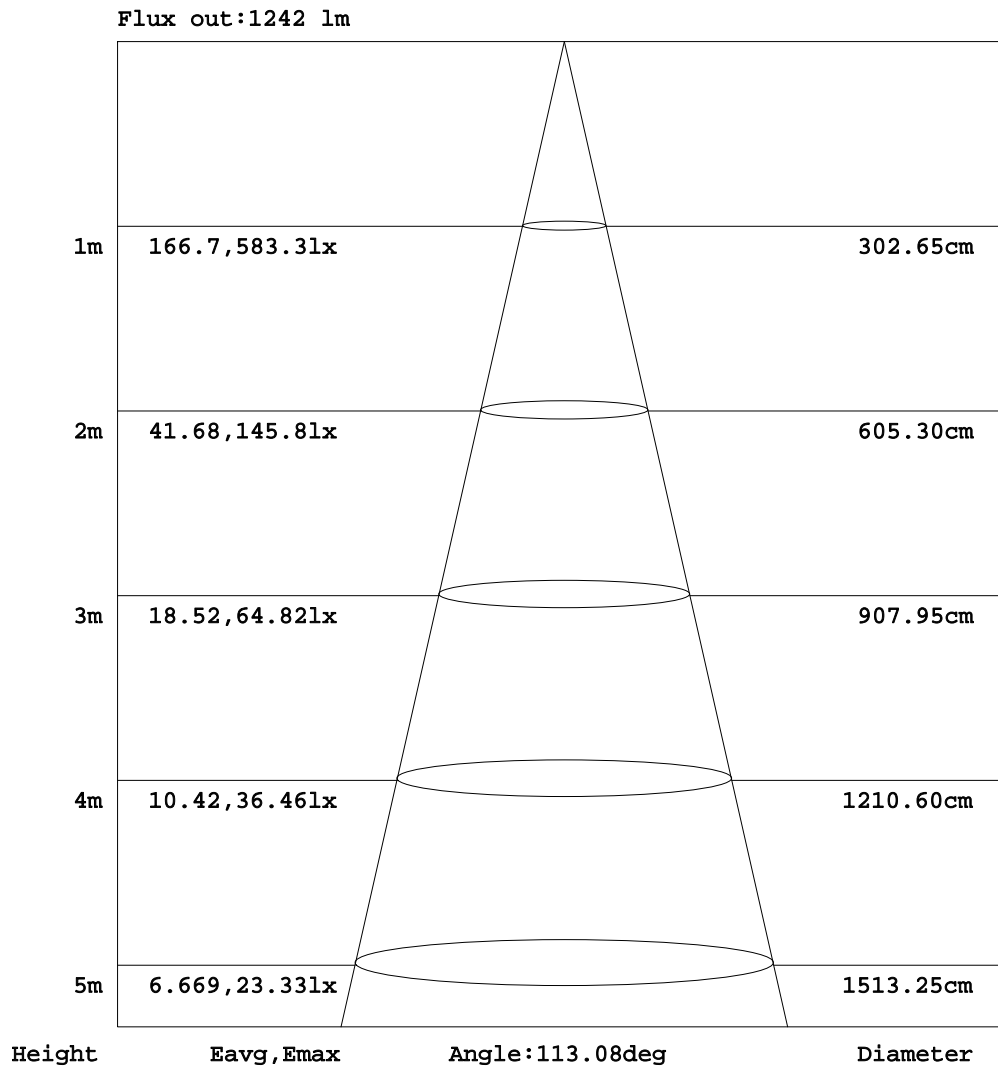


C Range: 0 - 360DEG
 C Interval: 22.5DEG
 Test Speed: HIGH
 Temperature:25.4DEG
 Operators:Carl
 Test Date:2022-06-02

γ Range: 0 - 180DEG
 γ Interval: 1.0DEG
 Test System:EVERFINE GO-R5000_V2 SYSTEM V2.0.351
 Humidity:39%
 Test Distance:2.526m [K=1.0000]
 Remarks:

AAI Figure

Test:U:120.0V I:0.1617A P:19.17W PF:0.9885 Lamp Flux:1437x1 lm		
NAME: ASD-MPR-9D18CC-EM-WH 5000K	TYPE:N/A	WEIGHT:N/A
SPEC.:N/A	DIM.: N/A	SERIAL No.:N/A
MFR.: ASD Lighting corp	SUR.:N/A	Shielding Angle:N/A



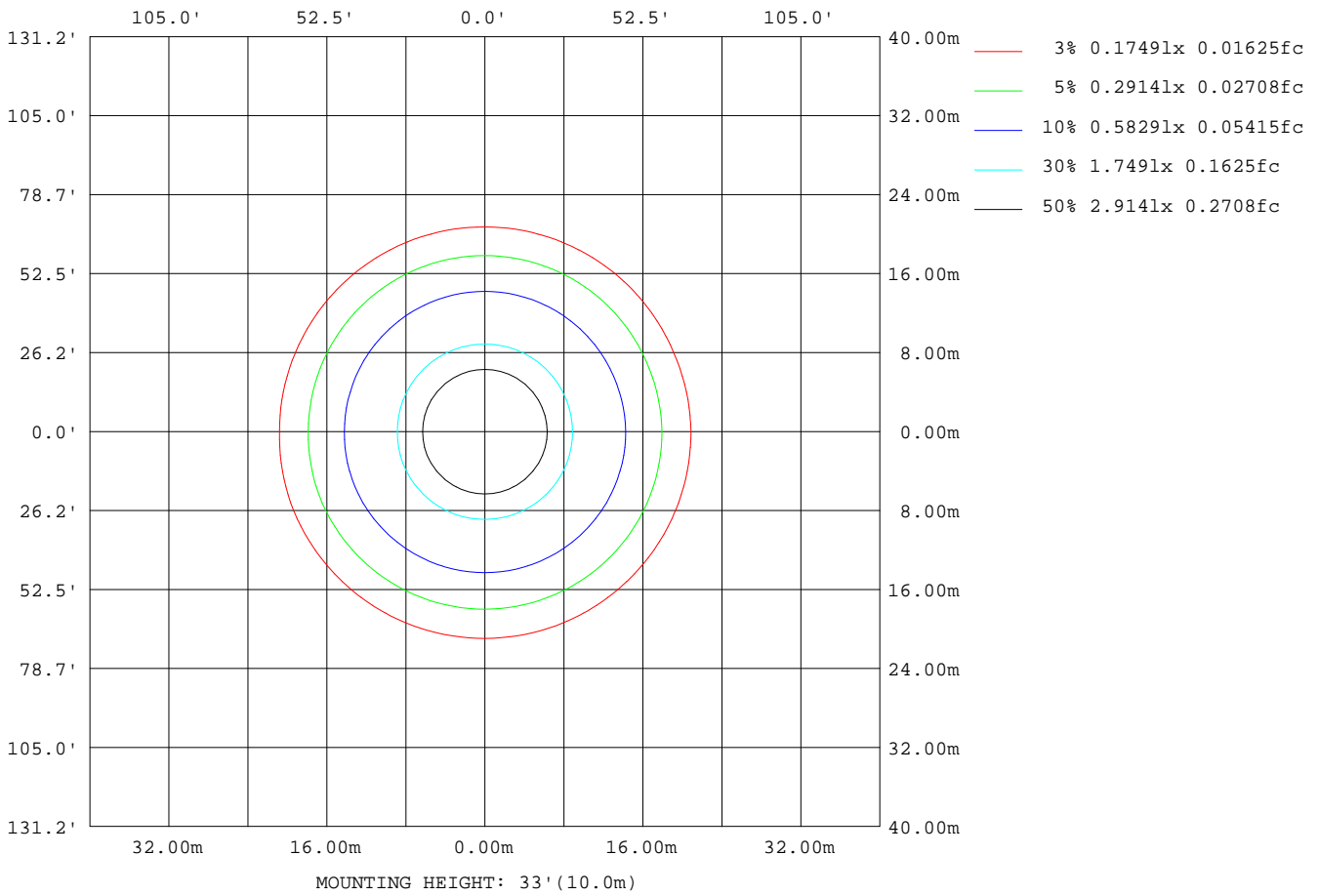
Note: The Curves indicate the illuminated area and the average illumination when the luminaire is at different distance.

C Range: 0 - 360DEG
 C Interval: 22.5DEG
 Test Speed: HIGH
 Temperature: 25.4DEG
 Operators: Carl
 Test Date: 2022-06-02

γ Range: 0 - 180DEG
 γ Interval: 1.0DEG
 Test System: EVERFINE GO-R5000_V2 SYSTEM V2.0.351
 Humidity: 39%
 Test Distance: 2.526m [K=1.0000]
 Remarks:

ISOLUX DIAGRAM

Test:U:120.0V I:0.1617A P:19.17W PF:0.9885 Lamp Flux:1437x1 lm		
NAME: ASD-MPR-9D18CC-EM-WH 5000K	TYPE:N/A	WEIGHT:N/A
SPEC.:N/A	DIM.: N/A	SERIAL No.:N/A
MFR.: ASD Lighting corp	SUR.:N/A	Shielding Angle:N/A



C Range: 0 - 360DEG
 C Interval: 22.5DEG
 Test Speed: HIGH
 Temperature:25.4DEG
 Operators:Carl
 Test Date:2022-06-02

γ Range: 0 - 180DEG
 γ Interval: 1.0DEG
 Test System:EVERFINE GO-R5000_V2 SYSTEM V2.0.351
 Humidity:39%
 Test Distance:2.526m [K=1.0000]
 Remarks:

LED Avg.L Report

Test:U:120.0V I:0.1617A P:19.17W PF:0.9885 Lamp Flux:1437x1 lm		
NAME: ASD-MPR-9D18CC-EM-WH 5000K	TYPE:N/A	WEIGHT:N/A
SPEC.:N/A	DIM.: N/A	SERIAL No.:N/A
MFR.: ASD Lighting corp	SUR.:N/A	Shielding Angle:N/A

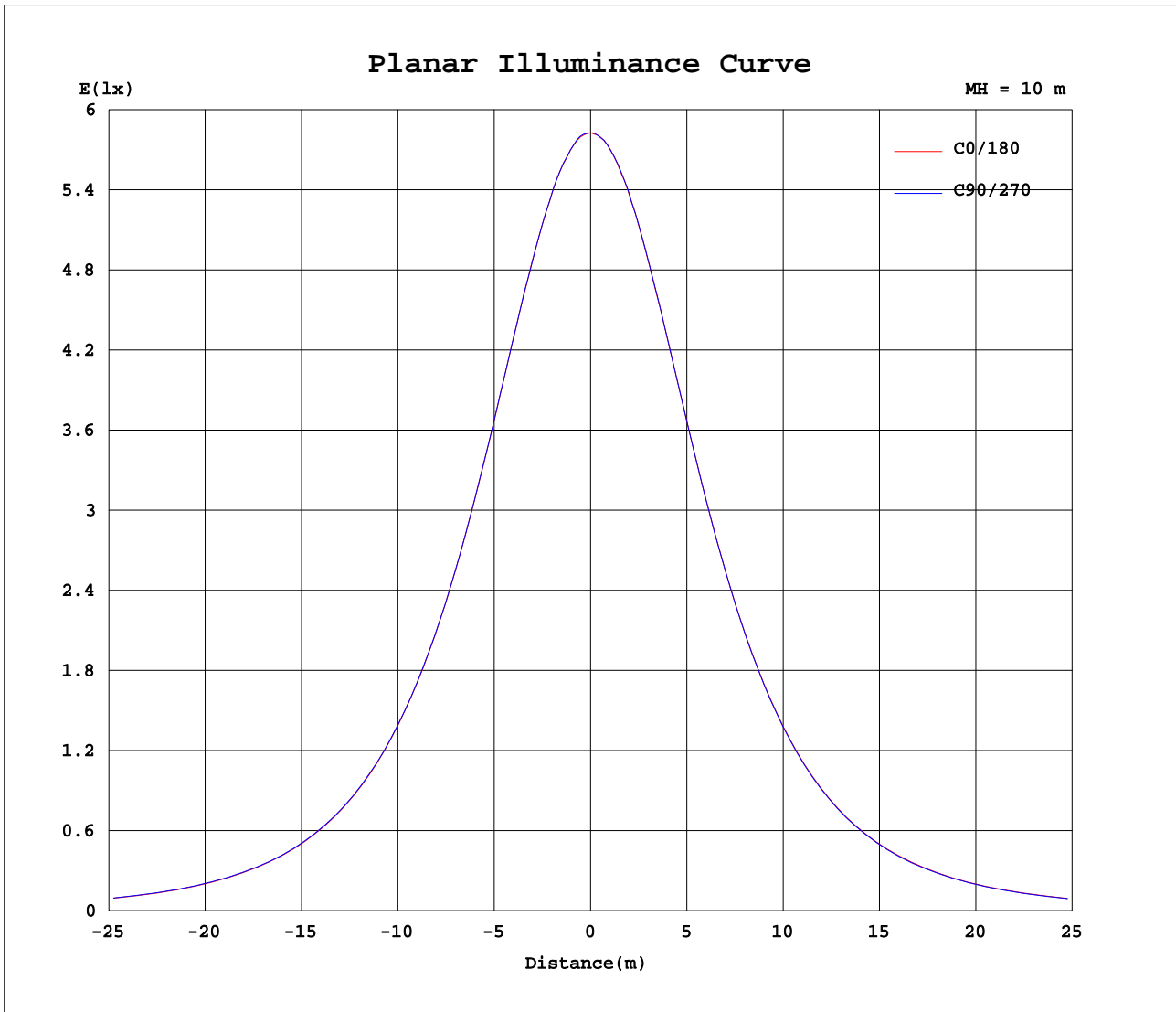
AvgL	cd/m2
L_0~180(65)av	17286
L_0~180(75)av	14303
L_0~180(85)av	7546
L_90~270(65)av	17292
L_90~270(75)av	14460
L_90~270(85)av	9042
L_45(65)av	17309
L_45(75)av	14438
L_45(85)av	8326

Standard: GB/T 29293-2012

C Range: 0 - 360DEG
C Interval: 22.5DEG
Test Speed: HIGH
Temperature:25.4DEG
Operators:Carl
Test Date:2022-06-02

γ Range: 0 - 180DEG
 γ Interval: 1.0DEG
Test System:EVERFINE GO-R5000_V2 SYSTEM V2.0.351
Humidity:39%
Test Distance:2.526m [K=1.0000]
Remarks:

Planar Illuminance Curve



C Range: 0 - 360DEG
 C Interval: 22.5DEG
 Test Speed: HIGH
 Temperature: 25.4DEG
 Operators: Carl
 Test Date: 2022-06-02

γ Range: 0 - 180DEG
 γ Interval: 1.0DEG
 Test System: EVERFINE GO-R5000_V2 SYSTEM V2.0.351
 Humidity: 39%
 Test Distance: 2.526m [K=1.0000]
 Remarks:

LUMINOUS DISTRIBUTION INTENSITY DATA

Test:U:120.0V I:0.1617A P:19.17W PF:0.9885 Lamp Flux:1437x1 lm		
NAME: ASD-MPR-9D18CC-EM-WH 5000K	TYPE:N/A	WEIGHT:N/A
SPEC.:N/A	DIM.: N/A	SERIAL No.:N/A
MFR.: ASD Lighting corp	SUR.:N/A	Shielding Angle:N/A

Table--1

UNIT: cd

C(DEG) γ (DEG)	0	22.5	45	67.5	90	112.5	135	157.5	180	202.5	225	247.5	270	292.5	315	337.5			
0	583	583	583	583	583	583	583	583	583	583	583	583	583	583	583	583			
5	580	580	581	580	580	581	580	581	580	580	580	580	581	580	581	580			
10	573	573	573	573	573	573	573	574	572	572	572	572	573	572	573	572			
15	560	561	560	560	561	561	561	561	559	560	559	560	560	560	560	560			
20	543	544	543	542	544	543	544	544	542	542	542	542	543	542	542	542			
25	521	522	522	521	522	522	522	521	520	520	520	520	520	520	520	520			
30	495	496	495	495	496	496	496	496	493	493	493	493	493	494	493	493			
35	464	465	465	465	465	466	466	466	463	463	463	462	463	462	462	462			
40	431	431	431	430	431	431	432	432	429	429	428	428	428	427	428	427			
45	392	393	393	393	394	394	394	394	390	390	390	389	389	389	390	389			
50	351	352	352	352	353	353	354	353	349	349	348	348	348	348	347	347			
55	307	308	308	308	309	309	310	309	305	304	303	303	303	303	303	303			
60	260	261	262	262	262	263	263	263	258	257	256	256	255	255	255	255			
65	210	211	212	213	213	214	214	214	208	207	207	206	205	205	205	205			
70	159	160	161	162	163	164	164	162	157	156	156	155	154	154	154	154			
75	107	109	110	111	112	113	112	111	105	104	104	103	102	102	102	102			
80	59.6	60.8	63.1	64.8	65.3	65.7	64.6	62.9	57.6	57.0	56.8	56.8	56.0	55.8	55.0	54.7			
85	19.0	20.5	22.9	25.2	26.0	25.8	24.0	22.2	18.6	18.3	18.8	19.5	19.1	18.7	17.4	16.5			
90	0.10	0.10	0.16	0.15	2.52	0.16	0.16	0.16	0.03	0.03	0.03	0.03	0.03	0.03	0.03	0.03			
95	0.13	0.13	0.13	0.13	0.12	0.12	0.12	0.12	0.04	0.05	0.05	0.05	0.05	0.05	0.05	0.05			
100	0.15	0.15	0.16	0.16	0.15	0.16	0.16	0.15	0.06	0.07	0.08	0.07	0.07	0.08	0.08	0.07			
105	0.16	0.16	0.17	0.17	0.17	0.17	0.17	0.16	0.08	0.09	0.09	0.09	0.09	0.09	0.09	0.09			
110	0.18	0.18	0.18	0.19	0.18	0.19	0.19	0.18	0.10	0.11	0.11	0.11	0.11	0.11	0.11	0.10			
115	0.20	0.20	0.20	0.20	0.20	0.21	0.21	0.20	0.13	0.13	0.13	0.14	0.13	0.13	0.13	0.13			
120	0.23	0.23	0.23	0.24	0.24	0.24	0.24	0.23	0.16	0.16	0.16	0.16	0.16	0.16	0.16	0.16			
125	0.28	0.28	0.28	0.28	0.29	0.29	0.28	0.28	0.20	0.19	0.20	0.19	0.19	0.19	0.19	0.19			
130	0.34	0.34	0.34	0.34	0.35	0.36	0.35	0.34	0.23	0.23	0.22	0.23	0.22	0.23	0.22	0.23			
135	0.41	0.42	0.43	0.43	0.44	0.45	0.43	0.41	0.27	0.26	0.26	0.26	0.26	0.26	0.26	0.27			
140	0.53	0.54	0.56	0.56	0.57	0.57	0.56	0.52	0.30	0.28	0.30	0.30	0.30	0.29	0.29	0.30			
145	0.65	0.68	0.72	0.73	0.74	0.73	0.70	0.66	0.32	0.31	0.33	0.35	0.34	0.34	0.33	0.34			
150	0.76	0.81	0.84	0.85	0.85	0.85	0.82	0.78	0.35	0.35	0.37	0.37	0.37	0.37	0.36	0.38			
155	0.89	0.93	0.94	0.95	0.96	0.96	0.94	0.91	0.41	0.39	0.42	0.42	0.41	0.42	0.41	0.44			
160	0.97	0.98	0.99	1.03	1.01	1.03	1.01	0.98	0.48	0.47	0.47	0.47	0.47	0.46	0.46	0.49			
165	0.97	0.97	0.98	0.99	1.01	1.01	1.00	0.98	0.53	0.52	0.50	0.51	0.50	0.50	0.50	0.54			
170	0.92	0.92	0.92	0.92	0.93	0.93	0.94	0.93	0.58	0.57	0.55	0.54	0.53	0.54	0.55	0.59			
175	0.89	0.87	0.87	0.85	0.84	0.86	0.88	0.89	0.68	0.68	0.66	0.63	0.62	0.62	0.64	0.68			
180	0.78	0.76	0.74	0.72	0.73	0.75	0.79	0.80	0.78	0.78	0.76	0.74	0.72	0.73	0.75	0.79			

C Range: 0 - 360DEG
 C Interval: 22.5DEG
 Test Speed: HIGH
 Temperature:25.4DEG
 Operators:Carl
 Test Date:2022-06-02

γ Range: 0 - 180DEG
 γ Interval: 1.0DEG
 Test System:EVERFINE GO-R5000_V2 SYSTEM V2.0.351
 Humidity:39%
 Test Distance:2.526m [K=1.0000]
 Remarks: