

ASD[®] LED FLOODLIGHT

► **DESIGN & OPTIONS** – LED FLOODLIGHT consumes a lot less energy and is much more efficient than all other widely used floodlights. It equipped with a 1-10V dimmable driver at 120-277V. The die-cast aluminum housing design is adapted to maximize heat dissipation on the surface, accelerate the air circulation, and to ensure longevity. It comes in a 5000K color temperature and a BLACK or WHITE finish.

► **INSTALLATION** – Floodlights with a sturdy metal arm bracket can be positioned in a flexible, more convenient way. They can be mounted directly to electrical boxes or to poles with ½" threaded inserts. A widened and thickened adjustable metal bracket makes the light more stable. You can easily install it on ceilings, walls, the ground, and other locations by adjusting the bracket to different angles and following a few simple wiring steps. Refer to install instructions for detailed steps.

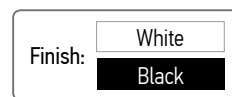
► **APPLICATION** – LED FLOODLIGHT is suitable for both indoor and outdoor applications such as: gardens, backyards, squares, factories, docks, stadiums, garages, streets, yards, exterior accent lighting for a house, outdoor shop lighting, or anywhere else lighting is needed. These lights are WET location rated and can operate in temperatures between -40°+122°F (-40°+50°C). This allows it to be utilized in a wide variety of applications and climates.

► **ENERGY SAVINGS & EFFICIENCY** – This fixture provides a lumen output equal to MH/HPS and can cut your electric bill by up to 80% instantly. With a lifespan of 54,000 hours, these fixtures are made to last decades under normal operation! This fixture will save you a significant amount of money in its lifetime.

► **CERTIFICATION & WARRANTY** – Buy with confidence: ASD provides a 5-year warranty along with UL and DLC Premium certifications to guarantee top quality products and safety!

Top US certifications allow participation in rebates; please check the rebate programs available in your state.

Catalog number	
Notes	
Type	



PRODUCT LEGEND:

Family	Voltage	Watts		Dimmable	CCT	Bracket	Finish	Series
ASD-FL	XX	XX		X	XX	X	XX	PRM
LED Floodlight	MV = 120-277 V	30 = 30 W	50 = 50 W	D = Dimmable	50 = 5,000 K	A = Arm Y = Yoke	BK = Black WH = White	Premium
		70 = 70 W	90 = 90 W					

LED FLOODLIGHT:

Model	Watts	Voltage	Dimmable	Lumens	CCT	Finish	Dimensions (LxWxH)	Cord	Bracket
ASD-FL-MV-30D50A-BK-PRM	30 W	120-277 V	1-10 V	4,214 lm	5,000 K	Black	7 1/8" x 8 7/8" x 2"	2 ft	Arm
ASD-FL-MV-30D50A-WH-PRM	30 W	120-277 V	1-10 V	4,214 lm	5,000 K	White	7 1/8" x 8 7/8" x 2"	2 ft	Arm
ASD-FL-MV-50D50A-BK-PRM	50 W	120-277 V	1-10 V	7,210 lm	5,000 K	Black	8 1/2" x 9 7/8" x 2"	2 ft	Arm
ASD-FL-MV-50D50A-WH-PRM	50 W	120-277 V	1-10 V	7,210 lm	5,000 K	White	8 1/2" x 9 7/8" x 2"	2 ft	Arm
ASD-FL-MV-70D50A-BK-PRM	70 W	120-277 V	1-10 V	10,030 lm	5,000 K	Black	10 7/16" x 11 1/4" x 2 1/4"	2 ft	Arm
ASD-FL-MV-90D50A-BK-PRM	90 W	120-277 V	1-10 V	12,758 lm	5,000 K	Black	10 7/16" x 11 1/4" x 2 1/4"	2 ft	Arm
ASD-FL-MV-50D50Y-BK-PRM	50 W	120-277 V	1-10 V	7,210 lm	5,000 K	Black	9 3/8" x 8" x 2"	2 ft	Yoke
ASD-FL-MV-70D50Y-BK-PRM	70 W	120-277 V	1-10 V	10,030 lm	5,000 K	Black	10 7/16" x 9 3/16" x 2 1/8"	2 ft	Yoke
ASD-FL-MV-90D50Y-BK-PRM	90 W	120-277 V	1-10 V	12,758 lm	5,000 K	Black	10 7/16" x 9 3/16" x 2 1/8"	2 ft	Yoke

For most up-to-date spec sheets please refer to asd-lighting.com



LED FLOODLIGHT

PRODUCT SPECIFICATIONS:

Construction & Materials						
Housing	Aluminum					
Reflector	Aluminum					
Glass	Tempered glass					
Mounting	½" NPS threaded locking swivel arm Yoke with ½" threaded fitting					
Finish	Black, White					
Weight	ASD-FL-MV-30D50A-BK-PRM	2.5 lb (1.1 kg)	ASD-FL-MV-50D50A-WH-PRM	3.6 lb (1.6 kg)	ASD-FL-MV-50D50Y-BK-PRM	3.6 lb (1.6 kg)
	ASD-FL-MV-30D50A-WH-PRM		ASD-FL-MV-70D50A-BK-PRM		ASD-FL-MV-70D50Y-BK-PRM	
	ASD-FL-MV-50D50A-BK-PRM	3.6 lb (1.6 kg)	ASD-FL-MV-90D50A-BK-PRM	5.5 lb (2.5 kg)	ASD-FL-MV-90D50Y-BK-PRM	5.7 lb (2.6 kg)
Environmental System						
Work Environment	Suitable for Wet Locations, IP65					
Operating Temperature	-40°F to 122°F / -40°C to 50°C					
L-70 Life	R > 54,000 hrs; C > 131,000 hrs					
Optical System						
Luminous Flux	ASD-FL-MV-30D50A-BK-PRM	4,214 lm	ASD-FL-MV-50D50A-WH-PRM	7,210 lm	ASD-FL-MV-50D50Y-BK-PRM	7,210 lm
	ASD-FL-MV-30D50A-WH-PRM		ASD-FL-MV-70D50A-BK-PRM		ASD-FL-MV-70D50Y-BK-PRM	
	ASD-FL-MV-50D50A-BK-PRM	7,210 lm	ASD-FL-MV-90D50A-BK-PRM	12,758 lm	ASD-FL-MV-90D50Y-BK-PRM	12,758 lm
Color Temperature	5,000 K					
CRI	> 80					
Electrical System						
Input Voltage	120-277 V					
Max input current	ASD-FL-MV-30D50A-BK-PRM	0.3 A	ASD-FL-MV-50D50A-WH-PRM	0.5 A	ASD-FL-MV-50D50Y-BK-PRM	0.5 A
	ASD-FL-MV-30D50A-WH-PRM	0.3 A	ASD-FL-MV-70D50A-BK-PRM	0.75 A	ASD-FL-MV-70D50Y-BK-PRM	0.75 A
	ASD-FL-MV-50D50A-BK-PRM	0.5 A	ASD-FL-MV-90D50A-BK-PRM	1.0 A	ASD-FL-MV-90D50Y-BK-PRM	1.0 A
AC input range	min 100 V max 277 V					
Off State Power	0 W					
Surge protection	ASD-FL-MV-30D50A-BK-PRM	2.5 kV	ASD-FL-MV-50D50A-WH-PRM	4 kV	ASD-FL-MV-50D50Y-BK-PRM	4 kV
	ASD-FL-MV-30D50A-WH-PRM		ASD-FL-MV-70D50A-BK-PRM		ASD-FL-MV-70D50Y-BK-PRM	
	ASD-FL-MV-50D50A-BK-PRM	4 kV	ASD-FL-MV-90D50A-BK-PRM	ASD-FL-MV-90D50Y-BK-PRM		
Power Consumption	ASD-FL-MV-30D50A-BK-PRM	30 W	ASD-FL-MV-50D50A-WH-PRM	50 W	ASD-FL-MV-50D50Y-BK-PRM	50 W
	ASD-FL-MV-30D50A-WH-PRM	30 W	ASD-FL-MV-70D50A-BK-PRM	70 W	ASD-FL-MV-70D50Y-BK-PRM	70 W
	ASD-FL-MV-50D50A-BK-PRM	50 W	ASD-FL-MV-90D50A-BK-PRM	90 W	ASD-FL-MV-90D50Y-BK-PRM	90 W
Power Factor	> 0.9					
Output voltage	ASD-FL-MV-30D50A-BK-PRM	36-48 V	ASD-FL-MV-50D50A-WH-PRM	36-48 V	ASD-FL-MV-50D50Y-BK-PRM	36-48 V
	ASD-FL-MV-30D50A-WH-PRM		ASD-FL-MV-70D50A-BK-PRM	30-42 V	ASD-FL-MV-70D50Y-BK-PRM	30-42 V
	ASD-FL-MV-50D50A-BK-PRM	ASD-FL-MV-90D50A-BK-PRM				
Max output current	ASD-FL-MV-30D50A-BK-PRM	1.73 A	ASD-FL-MV-50D50A-WH-PRM	1.15 A	ASD-FL-MV-50D50Y-BK-PRM	1.15 A
	ASD-FL-MV-30D50A-WH-PRM	1.73 A	ASD-FL-MV-70D50A-BK-PRM	1.78 A	ASD-FL-MV-70D50Y-BK-PRM	1.78 A
	ASD-FL-MV-50D50A-BK-PRM	1.15 A	ASD-FL-MV-90D50A-BK-PRM	1.95 A	ASD-FL-MV-90D50Y-BK-PRM	1.95 A
LED driver class	Class 1					
Dimming range						
10-100%						
Dimming compatible controls						
Brand	Leviton	Lutron	NFTV		Legrand	
Models	DS710	NTSTV-DV	NFTV		H4FBL3PW	
	IP710	DVTV-WH				
Regular and Voluntary Certifications						
5-year limited warranty						
cULus certified						
DesignLights Consortium (DLC) listed (Clasificación: Premium) Main: Outdoor Luminaires; General Application: Low Output; Primary Use: Replacement Lamps for Outdoor Pole/Arm-mounted Area and Roadway Luminaires (Type B)						

PACKAGE CONTENTS:

Description	Q-ty
LED Floodlight	1
Box	1
Cut Sheet	2

For most up-to-date spec sheets please refer to asd-lighting.com



LED FLOODLIGHT

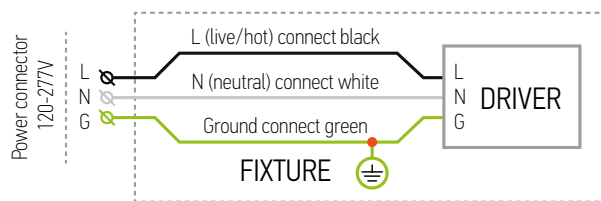
INSTALLATION GUIDE

IMPORTANT SAFETY INFORMATION:

Please read all the instructions below before installation.

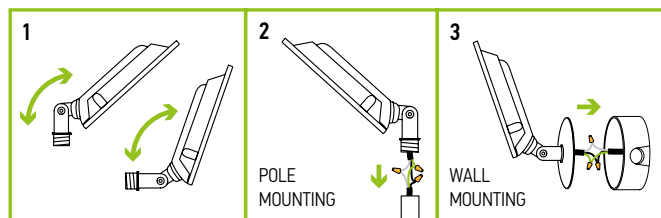
- ▶ Make sure that the supply voltage corresponds to the rated product voltage.
- ▶ The product must be installed by a qualified electrician in accordance with the National Electrical Code and corresponding local codes.
- ▶ If the product is damaged, do not use it.

ELECTRICAL SCHEMATIC DIAGRAM:



MODELS WITH ARM INSTALLATION STEPS:

1. Turn off the main power and then adjust the arm. The arm allows you to choose the necessary light direction and set the desired angle for the lighting fixture.
2. **Pole installation:** The floodlight can be mounted directly to a pole with a 1/2" threaded insert. Connect the wires: Black to Black, White to White, Green to Green. Secure the connection with Wire Nuts.
3. **J-box installation:** The floodlight can be mounted directly to an electrical box. Connect the wires: Black to Black, White to White, Green to Green. Secure the connection with Wire Nuts.



The LED Slim Floodlight with arm is designed to install as a surface mounted luminaire.

⚠ WARNING

RISK OF PERSONAL INJURY – READ and follow all WARNINGS and installation instructions.

Keep or give to the owner for future reference.

Risk of cuts: Wear gloves to prevent cuts or abrasions when removing from carton, handling, installing, and maintaining this product.

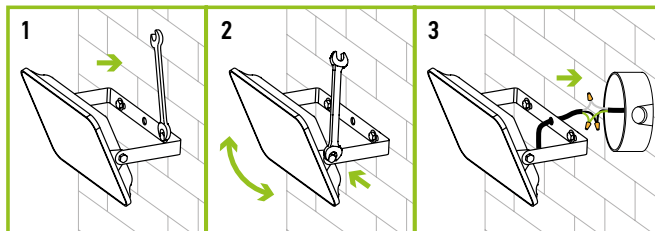
Risk of electric shock: This product must be installed in accordance with the applicable installation code by a person familiar with the construction and operation of the product and the hazards involved.

Risk of Fire: Minimum 194°F supply conductors. Consult a qualified electrician to ensure correct branch circuit conductor.

ASD® assumes no responsibility for claims arising out of improper or careless installation or handling of this product.

MODELS ON YOKE INSTALLATION STEPS:

1. Install the bracket to your mounting surface.
2. Adjust fixture to desired angle by loosening and tightening bolts on both sides of the bracket.
3. Connect the wires: Black to Black, White to White, Green to Green. Secure the connection with Wire Nuts.



The LED Slim Floodlight with yoke is designed to install as a surface mounted luminaire.

ORDERING INFORMATION

Model	Watts	Bracket	UPC	Pcs in Middle box	GTIN-14 Middle box	Pcs. per Carton	Carton Size	Carton Weight	GTIN 14 for Carton
ASD-FL-MV-30D50A-BK-PRM	30 W	Arm	819201029891	2	10819201029898	8	18.8" x 12.5" x 12.1"	26.9 lb	20819201029895
ASD-FL-MV-30D50A-WH-PRM	30 W	Arm	819201029907	2	10819201029904	8	18.8" x 12.5" x 12.1"	26.9 lb	20819201029901
ASD-FL-MV-50D50A-BK-PRM	50 W	Arm	819201029914	2	10819201029911	6	19.7" x 11" x 12.9"	28.2 lb	20819201029918
ASD-FL-MV-50D50A-WH-PRM	50 W	Arm	819201029921	2	10819201029928	6	19.7" x 11" x 12.9"	28.2 lb	20819201029925
ASD-FL-MV-70D50A-BK-PRM	70 W	Arm	819201027552	2	20819201027556	4	13.6" x 12.9" x 14.5"	32.6 lb	10819201027559
ASD-FL-MV-90D50A-BK-PRM	90 W	Arm	819201027569	2	20819201027563	4	13.6" x 12.9" x 14.5"	32.6 lb	10819201027566
ASD-FL-MV-50D50Y-BK-PRM	50 W	Yoke	819201029938	2	10819201029935	6	19.7" x 11" x 12.9"	28 lb	20819201029932
ASD-FL-MV-70D50Y-BK-PRM	70 W	Yoke	819201027583	2	20819201027587	4	13.6" x 12.9" x 14.5"	33.7 lb	10819201027580
ASD-FL-MV-90D50Y-BK-PRM	90 W	Yoke	819201027590	2	20819201027594	4	13.6" x 12.9" x 14.5"	33.7 lb	10819201027597

For most up-to-date spec sheets please refer to asd-lighting.com

ASD LIGHTING CORP

E-mail: orders@asd-lighting.com | Web site: www.asd-lighting.com

