



LED DOWNLIGHT RETROFIT KIT

► **DESIGN** - LED DOWNLIGHT RETROFIT KIT with classic, low-profile design allows you to have a stylish look with efficient lighting. The preinstalled TP24 and E26 connectors and spring-loaded clips make your installation quick and easy. The acrylic lens with up to 105° beam angle and CRI90+ grants you even light. It is designed to operate on 120V circuits.

► **COLOR SELECTABLE** - You can choose either a 2,700K soft white, 3,000K warm white, 3,500K neutral white, 4,000K cool white, or 5,000K daylight color temperature.

► **DIMMING** - Smooth triac dimming capabilities ranging from 10% to 100% with modern LED dimmers allow you to control the look and feel of your space.

► **APPLICATION** - This fixture is suitable for most new construction, remodeling, and shallow recessed lighting housings. It is also Wet Locations rated, making it perfect for kitchen, bathroom or any other common areas.

► **ADVANTAGES** - With a lifespan of 50,000 hours, these fixtures are made to last decades under normal operation! ASD provides a 5-year limited warranty along with UL and ETL certification to guarantee top quality products and safety!

Catalog number	
Notes	
Type	



Finish: White Bronze Black

Model	Size	Watts	Voitage	Dimmable	Lumens	CCT	Finish	Dimensions
LRKR ROUND								
ASD-LRKR-4D9AC-WH	4 inch	8.6W	120 V	TRIAC	up to 702 lm	5CCT (2,700/3,000/3,500/4,000/5,000 K)	White	5-1/16" x 2"
ASD-LRKR-4D9AC-WH-6PACK	4 inch	8.6W	120 V	TRIAC	up to 702 lm	5CCT (2,700/3,000/3,500/4,000/5,000 K)	White	5-1/16" x 2"
ASD-LRKR-4D9AC-WH-12PACK	4 inch	8.6W	120 V	TRIAC	up to 702 lm	5CCT (2,700/3,000/3,500/4,000/5,000 K)	White	5-1/16" x 2"
ASD-LRKR-4D9AC-BR	4 inch	8.6W	120 V	TRIAC	up to 702 lm	5CCT (2,700/3,000/3,500/4,000/5,000 K)	Bronze	5-1/16" x 2"
ASD-LRKR-4D9AC-BZ-6PACK	4 inch	8.6W	120 V	TRIAC	up to 702 lm	5CCT (2,700/3,000/3,500/4,000/5,000 K)	Bronze	5-1/16" x 2"
ASD-LRKR-4D9AC-BK	4 inch	8.6W	120 V	TRIAC	up to 702 lm	5CCT (2,700/3,000/3,500/4,000/5,000 K)	Black	5-1/16" x 2"
ASD-LRKR-4D9AC-BK-6PACK	4 inch	8.6W	120 V	TRIAC	up to 702 lm	5CCT (2,700/3,000/3,500/4,000/5,000 K)	Black	5-1/16" x 2"
ASD-LRKR-6D12AC-WH-6PACK	5 and 6 inch	12W	120 V	TRIAC	up to 1,009 lm	5CCT (2,700/3,000/3,500/4,000/5,000 K)	White	7-5/16" x 3-7/16"
ASD-LRKR-6D12AC-WH-12PACK	5 and 6 inch	12W	120 V	TRIAC	up to 1,009 lm	5CCT (2,700/3,000/3,500/4,000/5,000 K)	White	7-5/16" x 3-7/16"
ASD-LRKR-6D12AC-BR	5 and 6 inch	12W	120 V	TRIAC	up to 1,009 lm	5CCT (2,700/3,000/3,500/4,000/5,000 K)	Bronze	7-5/16" x 3-7/16"
ASD-LRKR-6D12AC-BZ-6PACK	5 and 6 inch	12W	120 V	TRIAC	up to 1,009 lm	5CCT (2,700/3,000/3,500/4,000/5,000 K)	Bronze	7-5/16" x 3-7/16"
ASD-LRKR-6D12AC-BK	5 and 6 inch	12W	120 V	TRIAC	up to 1,009 lm	5CCT (2,700/3,000/3,500/4,000/5,000 K)	Black	7-5/16" x 3-7/16"
ASD-LRKR-6D12AC-BK-6PACK	5 and 6 inch	12W	120 V	TRIAC	up to 1,009 lm	5CCT (2,700/3,000/3,500/4,000/5,000 K)	Black	7-5/16" x 3-7/16"
LRKS SQUARE								
ASD-LRKS-4D9AC-WH-6PACK	4 inch	8.6W	120 V	TRIAC	up to 709 lm	5CCT (2,700/3,000/3,500/4,000/5,000 K)	White	5" x 5" x 2-1/16"
ASD-LRKS-4D9AC-BZ-6PACK	4 inch	8.6W	120 V	TRIAC	up to 709 lm	5CCT (2,700/3,000/3,500/4,000/5,000 K)	Bronze	5" x 5" x 2-1/16"
ASD-LRKS-4D9AC-BK-6PACK	4 inch	8.6W	120 V	TRIAC	up to 709 lm	5CCT (2,700/3,000/3,500/4,000/5,000 K)	Black	5" x 5" x 2-1/16"
ASD-LRKS-6D12AC-WH-6PACK	6 inch	12W	120 V	TRIAC	up to 1,023 lm	5CCT (2,700/3,000/3,500/4,000/5,000 K)	White	7-5/16" x 7-5/16" x 1-7/8"
ASD-LRKS-6D12AC-BZ-6PACK	6 inch	12W	120 V	TRIAC	up to 1,023 lm	5CCT (2,700/3,000/3,500/4,000/5,000 K)	Bronze	7-5/16" x 7-5/16" x 1-7/8"
ASD-LRKS-6D12AC-BK-6PACK	6 inch	12W	120 V	TRIAC	up to 1,023 lm	5CCT (2,700/3,000/3,500/4,000/5,000 K)	Black	7-5/16" x 7-5/16" x 1-7/8"
LRK-GB / LRK-GBR ROUND GIMBAL								
ASD-LRK-GB-4D10WH	4 inch	10W	120 V	TRIAC	up to 811 lm	5CCT (2,700/3,000/3,500/4,000/5,000 K)	White	5-1/2" x 2-1/8"
ASD-LRK-GBR-4D10AC-WH-6PACK	4 inch	10W	120 V	TRIAC	up to 860 lm	5CCT (2,700/3,000/3,500/4,000/5,000 K)	White	5-3/8" x 2-13/16"
ASD-LRK-GB-4D10BR	4 inch	10W	120 V	TRIAC	up to 811 lm	5CCT (2,700/3,000/3,500/4,000/5,000 K)	Bronze	5-1/2" x 2-1/8"
ASD-LRK-GBR-4D10AC-BZ-6PACK	4 inch	10W	120 V	TRIAC	up to 860 lm	5CCT (2,700/3,000/3,500/4,000/5,000 K)	Bronze	5-3/8" x 2-13/16"
ASD-LRK-GBR-4D10AC-BK-6PACK	4 inch	10W	120 V	TRIAC	up to 860 lm	5CCT (2,700/3,000/3,500/4,000/5,000 K)	Black	5-3/8" x 2-13/16"
ASD-LRK-GB-6D15WH	6 inch	15W	120 V	TRIAC	up to 1,236 lm	5CCT (2,700/3,000/3,500/4,000/5,000 K)	White	7-1/2" x 2-1/8"
ASD-LRK-GBR-6D15AC-WH-6PACK	6 inch	15W	120 V	TRIAC	up to 1,310 lm	5CCT (2,700/3,000/3,500/4,000/5,000 K)	White	7-11/16" x 3-1/16"
ASD-LRK-GB-6D15BR	6 inch	15W	120 V	TRIAC	up to 1,236 lm	5CCT (2,700/3,000/3,500/4,000/5,000 K)	Bronze	7-1/2" x 2-1/8"
ASD-LRK-GBR-6D15AC-BZ-6PACK	6 inch	15W	120 V	TRIAC	up to 1,310 lm	5CCT (2,700/3,000/3,500/4,000/5,000 K)	Bronze	7-11/16" x 3-1/16"
ASD-LRK-GBR-6D15AC-BK-6PACK	6 inch	15W	120 V	TRIAC	up to 1,310 lm	5CCT (2,700/3,000/3,500/4,000/5,000 K)	Black	7-11/16" x 3-1/16"

For detailed luminous flux information please refer to Annex, page 4.

For most up-to-date spec sheets please refer to asd-lighting.com

ASD LIGHTING CORP

E-mail: orders@asd-lighting.com | Web site: www.asd-lighting.com





LED DOWNLIGHT RETROFIT KIT

PRODUCT SPECIFICATIONS:

Construction & Materials						
Housing	Plastic		for LRK-GB models: Metal		for LRK-GBR models: Aluminum	
Lens	PC		for LRK-GB models: Plastic		for LRK-GBR models: Acrylic	
Finish	White, Bronze, Black					
Weight	ASD-LRKR-4D9AC-WH	0.2 lbs (0.1 kg)	ASD-LRKR-6D12AC-BR	0.4 lbs (0.2 kg)	ASD-LRK-GB-4D10WH	0.3 lbs (0.1 kg)
	ASD-LRKR-4D9AC-WH-6PACK	1.5 lbs (0.7 kg)	ASD-LRKR-6D12AC-BZ-6PACK	2.2 lbs (1 kg)	ASD-LRK-GBR-4D10AC-WH-6PACK	3.6 lbs (1.6 kg)
	ASD-LRKR-4D9AC-WH-12PACK	2.9 lbs (1.3 kg)	ASD-LRKR-6D12AC-BK	0.4 lbs (0.2 kg)	ASD-LRK-GB-4D10BR	0.3 lbs (0.1 kg)
	ASD-LRKR-4D9AC-BR	0.2 lbs (0.1 kg)	ASD-LRKR-6D12AC-BK-6PACK	2.2 lbs (1 kg)	ASD-LRK-GBR-4D10AC-BZ-6PACK	3.6 lbs (1.6 kg)
	ASD-LRKR-4D9AC-BZ-6PACK	1.5 lbs (0.7 kg)	ASD-LRKS-4D9AC-WH-6PACK	1.5 lbs (0.7 kg)	ASD-LRK-GBR-4D10AC-BK-6PACK	
	ASD-LRKR-4D9AC-BK	0.2 lbs (0.1 kg)	ASD-LRKS-4D9AC-BZ-6PACK		ASD-LRK-GB-6D15WH	0.3 lbs (0.2 kg)
	ASD-LRKR-4D9AC-BK-6PACK	1.5 lbs (0.7 kg)	ASD-LRKS-4D9AC-BK-6PACK		ASD-LRK-GBR-6D15AC-WH-6PACK	5 lbs (2.3 kg)
	ASD-LRKR-6D12AC-WH-6PACK	2.2 lbs (1 kg)	ASD-LRKS-6D12AC-WH-6PACK	2.4 lbs (1.1 kg)	ASD-LRK-GB-6D15BR	0.3 lbs (0.2 kg)
	ASD-LRKR-6D12AC-WH-12PACK	4.5 lbs (2 kg)	ASD-LRKS-6D12AC-BZ-6PACK		ASD-LRK-GBR-6D15AC-BZ-6PACK	5 lbs (2.3 kg)
		ASD-LRKS-6D12AC-BK-6PACK	ASD-LRK-GBR-6D15AC-BK-6PACK			
Environmental system						
Work environment	Suitable for Wet Locations					
Operating temperature	-4°F to 104°F (-20°C to 40°C)		for LRK-GB models: -4°F to 113°F (-20°C to 45°C)			
L-70 Life	> 50,000 hrs					
Optical system						
Color temperature	5CCT switch (2,700/3,000/3,500/4,000/5,000 K), 3,000 K by default					
CRI	> 90					
Electrical system						
Input voltage	120 V					
Max input current	ASD-LRKR-4D9AC-WH	0.086 A	ASD-LRKR-6D12AC-BR	0.12 A	ASD-LRK-GB-4D10WH	0.1 A
	ASD-LRKR-4D9AC-WH-6PACK		ASD-LRKR-6D12AC-BZ-6PACK		ASD-LRK-GBR-4D10AC-WH-6PACK	0.12 A
	ASD-LRKR-4D9AC-WH-12PACK		ASD-LRKR-6D12AC-BK		ASD-LRK-GB-4D10BR	0.1 A
	ASD-LRKR-4D9AC-BR	0.12 A	ASD-LRKR-6D12AC-BK-6PACK	0.086 A	ASD-LRK-GBR-4D10AC-BZ-6PACK	0.12 A
	ASD-LRKR-4D9AC-BZ-6PACK		ASD-LRKS-4D9AC-WH-6PACK		ASD-LRK-GBR-4D10AC-BK-6PACK	
	ASD-LRKR-4D9AC-BK		ASD-LRKS-4D9AC-BZ-6PACK		ASD-LRK-GB-6D15WH	0.15 A
	ASD-LRKR-4D9AC-BK-6PACK	ASD-LRKS-4D9AC-BK-6PACK	ASD-LRK-GBR-6D15AC-WH-6PACK			
	ASD-LRKR-6D12AC-WH-6PACK	ASD-LRKS-6D12AC-WH-6PACK	ASD-LRK-GB-6D15BR			
	ASD-LRKR-6D12AC-WH-12PACK		ASD-LRKS-6D12AC-BZ-6PACK	0.12 A	ASD-LRK-GBR-6D15AC-BZ-6PACK	
		ASD-LRKS-6D12AC-BK-6PACK		ASD-LRK-GBR-6D15AC-BK-6PACK		
Inrush current (Action time)	ASD-LRKR-4D9AC-WH	40 A (0.2 S)	ASD-LRKR-6D12AC-BR	40 A (0.2 S)	ASD-LRK-GB-4D10WH	0.28 A (0.13 S)
	ASD-LRKR-4D9AC-WH-6PACK		ASD-LRKR-6D12AC-BZ-6PACK		ASD-LRK-GBR-4D10AC-WH-6PACK	30 A (0.3 S)
	ASD-LRKR-4D9AC-WH-12PACK		ASD-LRKR-6D12AC-BK		ASD-LRK-GB-4D10BR	0.28 A (0.13 S)
	ASD-LRKR-4D9AC-BR		ASD-LRKR-6D12AC-BK-6PACK		ASD-LRK-GBR-4D10AC-BZ-6PACK	30 A (0.3 S)
	ASD-LRKR-4D9AC-BZ-6PACK		ASD-LRKS-4D9AC-WH-6PACK		ASD-LRK-GBR-4D10AC-BK-6PACK	
	ASD-LRKR-4D9AC-BK		ASD-LRKS-4D9AC-BZ-6PACK		ASD-LRK-GB-6D15WH	0.32 A (0.12 S)
	ASD-LRKR-4D9AC-BK-6PACK		ASD-LRKS-4D9AC-BK-6PACK		ASD-LRK-GBR-6D15AC-WH-6PACK	40 A (0.3 S)
	ASD-LRKR-6D12AC-WH-6PACK		ASD-LRKS-6D12AC-WH-6PACK		ASD-LRK-GB-6D15BR	0.32 A (0.12 S)
	ASD-LRKR-6D12AC-WH-12PACK		ASD-LRKS-6D12AC-BZ-6PACK		ASD-LRK-GBR-6D15AC-BZ-6PACK	40 A (0.3 S)
	ASD-LRKS-6D12AC-BK-6PACK	ASD-LRK-GBR-6D15AC-BK-6PACK				
Off state power	0W					
Power consumption	ASD-LRKR-4D9AC-WH	8.6W	ASD-LRKR-6D12AC-BR	12W	ASD-LRK-GB-4D10WH	10W
	ASD-LRKR-4D9AC-WH-6PACK		ASD-LRKR-6D12AC-BZ-6PACK		ASD-LRK-GBR-4D10AC-WH-6PACK	
	ASD-LRKR-4D9AC-WH-12PACK		ASD-LRKR-6D12AC-BK		ASD-LRK-GB-4D10BR	
	ASD-LRKR-4D9AC-BR	12W	ASD-LRKR-6D12AC-BK-6PACK	8.6W	ASD-LRK-GBR-4D10AC-BZ-6PACK	15W
	ASD-LRKR-4D9AC-BZ-6PACK		ASD-LRKS-4D9AC-WH-6PACK		ASD-LRK-GBR-4D10AC-BK-6PACK	
	ASD-LRKR-4D9AC-BK		ASD-LRKS-4D9AC-BZ-6PACK		ASD-LRK-GB-6D15WH	
	ASD-LRKR-4D9AC-BK-6PACK	ASD-LRKS-4D9AC-BK-6PACK	ASD-LRK-GBR-6D15AC-WH-6PACK	12W	ASD-LRK-GB-6D15BR	
	ASD-LRKR-6D12AC-WH-6PACK	ASD-LRKS-6D12AC-WH-6PACK	ASD-LRK-GBR-6D15AC-BZ-6PACK			
	ASD-LRKR-6D12AC-WH-12PACK	ASD-LRKS-6D12AC-BZ-6PACK	ASD-LRK-GBR-6D15AC-BK-6PACK			
Power factor	> 0.8 for LRK-GB, LRK-GBR models: > 0.9					

For most up-to-date spec sheets please refer to asd-lighting.com

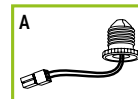


LED DOWNLIGHT RETROFIT KIT

Electrical system										
Output voltage	ASD-LRKR-4D9AC-WH	135 V	ASD-LRKR-6D12AC-BR	135 V	ASD-LRK-GB-4D10WH	108 V				
	ASD-LRKR-4D9AC-WH-6PACK		ASD-LRKR-6D12AC-BZ-6PACK		ASD-LRK-GBR-4D10AC-WH-6PACK	60 V				
	ASD-LRKR-4D9AC-WH-12PACK		ASD-LRKR-6D12AC-BK		ASD-LRK-GB-4D10BR	108 V				
	ASD-LRKR-4D9AC-BR		ASD-LRKR-6D12AC-BK-6PACK		ASD-LRK-GBR-4D10AC-BZ-6PACK	60 V				
	ASD-LRKR-4D9AC-BZ-6PACK		ASD-LRKS-4D9AC-WH-6PACK		ASD-LRK-GBR-4D10AC-BK-6PACK	60 V				
	ASD-LRKR-4D9AC-BK		ASD-LRKS-4D9AC-BZ-6PACK		ASD-LRK-GB-6D15WH	110 V				
	ASD-LRKR-4D9AC-BK-6PACK		ASD-LRKS-4D9AC-BK-6PACK		ASD-LRK-GBR-6D15AC-WH-6PACK	90 V				
	ASD-LRKR-6D12AC-WH-6PACK		ASD-LRKS-6D12AC-WH-6PACK		ASD-LRK-GB-6D15BR	110 V				
	ASD-LRKR-6D12AC-WH-12PACK		ASD-LRKS-6D12AC-BZ-6PACK		ASD-LRK-GBR-6D15AC-BZ-6PACK	110 V				
Max output current	ASD-LRKR-4D9AC-WH	0.055 A	ASD-LRKR-6D12AC-BK-6PACK	0.075 A	ASD-LRK-GB-4D10WH	0.085 A				
	ASD-LRKR-4D9AC-WH-6PACK		ASD-LRKR-6D12AC-BR		ASD-LRK-GBR-4D10AC-WH-6PACK	0.15 A				
	ASD-LRKR-4D9AC-WH-12PACK		ASD-LRKR-6D12AC-BZ-6PACK		ASD-LRK-GB-4D10BR	0.085 A				
	ASD-LRKR-4D9AC-BR	0.075 A	ASD-LRKR-6D12AC-BK-6PACK	0.055 A	ASD-LRK-GBR-4D10AC-BZ-6PACK	0.15 A				
	ASD-LRKR-4D9AC-BZ-6PACK		ASD-LRKS-4D9AC-WH-6PACK		ASD-LRK-GBR-4D10AC-BK-6PACK	0.15 A				
	ASD-LRKR-4D9AC-BK		ASD-LRKS-4D9AC-BZ-6PACK		ASD-LRK-GB-6D15WH	0.115 A				
	ASD-LRKR-4D9AC-BK-6PACK	0.075 A	ASD-LRKS-4D9AC-BK-6PACK	0.075 A	ASD-LRK-GBR-6D15AC-WH-6PACK	0.15 A				
	ASD-LRKR-6D12AC-WH-6PACK		ASD-LRKS-6D12AC-WH-6PACK		ASD-LRK-GB-6D15BR	0.115 A				
	ASD-LRKR-6D12AC-WH-12PACK		ASD-LRKS-6D12AC-BZ-6PACK		ASD-LRK-GBR-6D15AC-BZ-6PACK	0.15 A				
Surge protection DM/CM	2.5 kV / 2.5 kV		for LRK-GB models: 0.5 kV / 1 kV							
Dimming compatible controls										
Brand	Lutron						Leviton			
Models	DVV-603PGH-WH	CT-603PGH-WH	DVLV-603P-IV	MALV-600	NT-1000	S-600P	DB33K1	1F4205	6683	6672
	MIR-600THW-WH	DVCL-153P-WH	S-600PR-WH	DV-600P	S-603P	4X603	1E1205	VP106	6674	6631
	MACL-153M-WH									
Dimming compatible controls for LRK-GB, LRK-GBR										
Brand	Lutron						Leviton			
Models	DVWCL-153PH-LA	CTCL-153PDH-LA	DVCL-163P-WH	CT-600PR-WH	DVLV-603P-IV	S-603P	DSL06-1TW	6633-P	6674	
	DVV-603PGH-WH	CTCL-153PR-WH	SCL-153PR-WH	CT-103PR-WH	DV-600P	S-600P	DB33K1	IPL06	6672	
	CTCL-153PDH-WH	MACL-153M-WH	CTCL-150H-WH	SLV-600P-WH	NT-1000	4X603	1A2305	6683	6631	
	MACL-153MR-WH	DVRF-6L (only for LRK-GB models)								
Dimming range										
10-100%										
Regular and voluntary certifications										
5-year limited warranty										
UL certified E475148 (except LRK-GB models)										
cETLus certified...5011772 (only for LRK-GB models)										
FCC compliant										

PACKAGE CONTENTS:

Description	Q-ty
LED Downlight Retrofit Kit	1 (6 for 6 pack; 12 for 12 pack)
Adapter (A)	1
Box	1



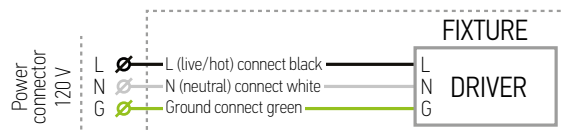
INSTALLATION GUIDE

IMPORTANT SAFETY INFORMATION:

Please read all the instructions below before installation.

- ▶ Make sure that the supply voltage corresponds to the rated product voltage.
- ▶ The product must be installed by a qualified electrician in accordance with the National Electrical Code and corresponding local codes.
- ▶ If the product is damaged, do not use it.

ELECTRICAL SCHEMATIC DIAGRAM:



⚠ WARNING

RISK OF PERSONAL INJURY – READ and follow all WARNINGS and installation instructions. Keep or give to the owner for future reference.

Risk of cuts: Wear gloves to prevent cuts or abrasions when removing from carton, handling, installing, and maintaining this product.

Risk of electric shock: This product must be installed in accordance with the applicable installation code by a person familiar with the construction and operation of the product and the hazards involved.

Risk of Fire: Minimum 194°F supply conductors. Consult a qualified electrician to ensure correct branch circuit conductor.

ASD® assumes no responsibility for claims arising out of improper or careless installation or handling of this product.

For most up-to-date spec sheets please refer to asd-lighting.com

ASD LIGHTING CORP

E-mail: orders@asd-lighting.com | Web site: www.asd-lighting.com

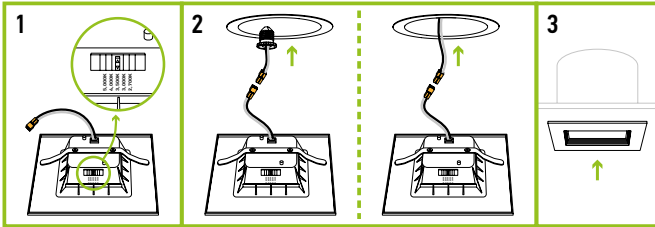
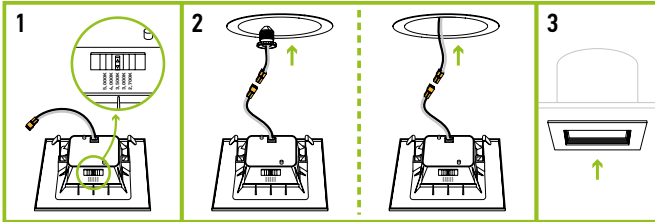
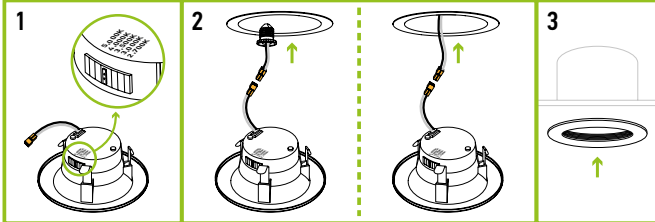




LED DOWNLIGHT RETROFIT KIT

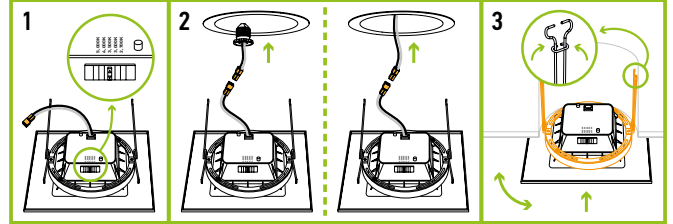
INSTALLATION STEPS 4", 6":

1. Choose needed color temperature by adjusting the switch.
2. Turn off the main power and remove the existing trim and bulb from the can. Use one of the options to connect the terminals.
3. Carefully route wires into the can and gently push the fixture up into the can until sealed.



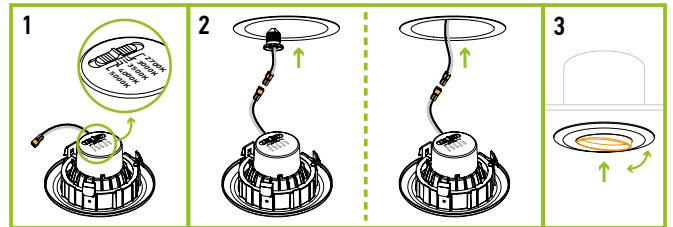
INSTALLATION STEPS WITH MOUNTING RING:

1. Choose needed color temperature by adjusting the switch.
2. Turn off the main power and remove the existing trim and bulb from the Can. Use one of the options to connect the terminals.
3. Squeeze the two sets of spring clip arms up toward each other. Route wires into the Can and hook both springs into the arm hook on the inside of Can. Release springs and gently push the fixture up into the Can until sealed. Rotate the trim to the desired direction if needed.



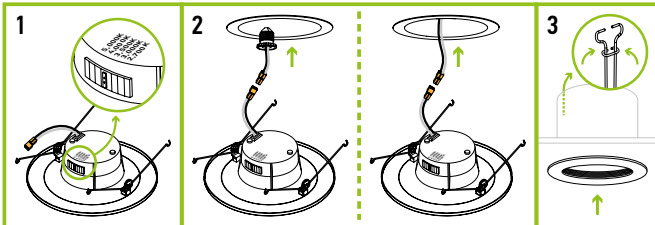
INSTALLATION STEPS GIMBAL 4":

1. Choose needed color temperature by adjusting the switch.
2. Turn off the main power and remove the existing trim and bulb from the can. Use one of the options to connect the terminals.
3. Carefully route wires into the can and gently push the fixture up into the can until sealed.



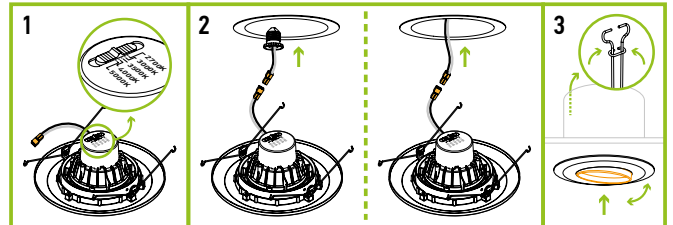
INSTALLATION STEPS 5" AND 6" ROUND:

1. Choose needed color temperature by adjusting the switch.
2. Turn off the main power and remove the existing trim and bulb from the Can. Use one of the options to connect the terminals.
3. Squeeze the two sets of spring clip arms up toward each other. Route wires into the Can and hook both springs into the arm hook on the inside of Can. Release springs and gently push the fixture up into the Can until sealed.



INSTALLATION STEPS GIMBAL 6":

1. Choose needed color temperature by adjusting the switch.
2. Turn off the main power and remove the existing trim and bulb from the Can. Use one of the options to connect the terminals.
3. Squeeze the two sets of spring clip arms up toward each other. Route wires into the Can and hook both springs into the arm hook on the inside of Can. Release springs and gently push the fixture up into the Can until sealed.



For most up-to-date spec sheets please refer to asd-lighting.com



LED DOWNLIGHT RETROFIT KIT

ORDERING INFORMATION

Model	UPC	Pcs. (pack) per carton	Carton size	Carton weight	GTIN 14
LRKR ROUND					
ASD-LRKR-4D9AC-WH	810050739290	6	11" x 7.9" x 5.8"	2.7 lbs	10810050739297
ASD-LRKR-4D9AC-WH-6PACK	810050738682	12 (2)	13" x 10" x 7.1"	5.1 lbs	10810050738689
ASD-LRKR-4D9AC-WH-12PACK	810050738941	12 (1)	12.4" x 9.5" x 5.7"	3.8 lbs	-
ASD-LRKR-4D9AC-BR	810128115964	6	11" x 7.9" x 5.8"	2.7 lbs	10810128115961
ASD-LRKR-4D9AC-BZ-6PACK	810050739474	12 (2)	13" x 10" x 7.1"	5.1 lbs	10810050739471
ASD-LRKR-4D9AC-BK	810050739566	6	11" x 7.9" x 5.8"	2.7 lbs	10810050739563
ASD-LRKR-4D9AC-BK-6PACK	810050739467	12 (2)	13" x 10" x 7.1"	5.1 lbs	10810050739464
ASD-LRKR-6D12AC-WH-6PACK	810050738699	12 (2)	16.9" x 13.8" x 7.5"	6.6 lbs	10810050738696
ASD-LRKR-6D12AC-WH-12PACK	810050738958	12 (1)	13.4" x 12.4" x 7.3"	6 lbs	-
ASD-LRKR-6D12AC-BR	810128115094	6	15.6" x 7.9" x 8.1"	3.8 lbs	10810128115091
ASD-LRKR-6D12AC-BZ-6PACK	810050739542	12 (2)	16.9" x 13.8" x 7.5"	6.6 lbs	10810050739549
ASD-LRKR-6D12AC-BK	810050739573	6	15.6" x 7.9" x 8.1"	3.8 lbs	10810050739570
ASD-LRKR-6D12AC-BK-6PACK	810050739535	12 (2)	16.9" x 13.8" x 7.5"	6.6 lbs	10810050739532
LRKS SQUARE					
ASD-LRKS-4D9AC-WH-6PACK	810050739603	12 (2)	15.4" x 11.2" x 6.5"	4.9 lbs	10810050739600
ASD-LRKS-4D9AC-BZ-6PACK	810050739634	12 (2)	15.4" x 11.2" x 6.5"	4.9 lbs	10810050739631
ASD-LRKS-4D9AC-BK-6PACK	810050739627	12 (2)	15.4" x 11.2" x 6.5"	4.9 lbs	10810050739624
ASD-LRKS-6D12AC-WH-6PACK	810050739658	12 (2)	16.3" x 15.8" x 5.5"	7.5 lbs	10810050739655
ASD-LRKS-6D12AC-BZ-6PACK	810050739696	12 (2)	16.3" x 15.8" x 5.5"	7.5 lbs	10810050739693
ASD-LRKS-6D12AC-BK-6PACK	810050739672	12 (2)	16.3" x 15.8" x 5.5"	7.5 lbs	10810050739679
LRK-GB / LRK-GBR ROUND GIMBAL					
ASD-LRK-GB-4D10WH	810128115186	6	17" x 6.1" x 6.2"	2.6 lbs	10810128115183
ASD-LRK-GBR-4D10AC-WH-6PACK	810050738309	12 (2)	11.2" x 10.6" x 12.6"	9.4 lbs	10810050738306
ASD-LRK-GB-4D10BR	810128115193	6	17" x 6.1" x 6.2"	2.6 lbs	10810128115190
ASD-LRK-GBR-4D10AC-BZ-6PACK	810128110358	12 (2)	11.2" x 10.6" x 12.6"	9.4 lbs	10810128110355
ASD-LRK-GBR-4D10AC-BK-6PACK	819201023295	12 (2)	11.2" x 10.6" x 12.6"	9.4 lbs	10819201023292
ASD-LRK-GB-6D15WH	810128115209	6	14.7" x 8" x 8.2"	3.5 lbs	10810128115206
ASD-LRK-GBR-6D15AC-WH-6PACK	810050738316	12 (2)	22" x 14.6" x 9.3"	12.8 lbs	10810050738313
ASD-LRK-GB-6D15BR	810128115216	6	14.7" x 8" x 8.2"	3.5 lbs	10810128115213
ASD-LRK-GBR-6D15AC-BZ-6PACK	810128110365	12 (2)	22" x 14.6" x 9.3"	12.8 lbs	10810128110362
ASD-LRK-GBR-6D15AC-BK-6PACK	819201022823	12 (2)	22" x 14.6" x 9.3"	12.8 lbs	10819201022820

ANNEX 1

Model	Watts	2,700 K	3,000 K	3,500 K	4,000 K	5,000 K
ASD-LRKR-4D9AC-WH ASD-LRKR-4D9AC-WH-6PACK ASD-LRKR-4D9AC-WH-12PACK ASD-LRKR-4D9AC-BR ASD-LRKR-4D9AC-BZ-6PACK ASD-LRKR-4D9AC-BK ASD-LRKR-4D9AC-BK-6PACK	8.6W	674 lm	684 lm	688 lm	702 lm	696 lm
ASD-LRKR-6D12AC-WH-6PACK ASD-LRKR-6D12AC-WH-12PACK ASD-LRKR-6D12AC-BR ASD-LRKR-6D12AC-BZ-6PACK ASD-LRKR-6D12AC-BK ASD-LRKR-6D12AC-BK-6PACK	12W	962 lm	971 lm	992 lm	1,009 lm	996 lm
ASD-LRKS-4D9AC-WH-6PACK ASD-LRKS-4D9AC-BZ-6PACK ASD-LRKS-4D9AC-BK-6PACK	8.6W	662 lm	674 lm	677 lm	709 lm	691 lm
ASD-LRKS-6D12AC-WH-6PACK ASD-LRKS-6D12AC-BZ-6PACK ASD-LRKS-6D12AC-BK-6PACK	12W	965 lm	977 lm	986 lm	988 lm	1,023 lm
ASD-LRK-GBR-4D10AC-WH-6PACK ASD-LRK-GBR-4D10AC-BZ-6PACK ASD-LRK-GBR-4D10AC-BK-6PACK	10W	650 lm	771 lm	846 lm	860 lm	841 lm
ASD-LRK-GB-4D10BR ASD-LRK-GB-4D10WH	10W	735 lm	772 lm	803 lm	811 lm	758 lm
ASD-LRK-GB-6D15WH ASD-LRK-GB-6D15BR	15W	1,105 lm	1,155 lm	1,220 lm	1,236 lm	1,159 lm
ASD-LRK-GBR-6D15AC-WH-6PACK ASD-LRK-GBR-6D15AC-BZ-6PACK ASD-LRK-GBR-6D15AC-BK-6PACK	15W	1,100 lm	1,243 lm	1,310 lm	1,308 lm	1,221 lm

For most up-to-date spec sheets please refer to asd-lighting.com

ASD LIGHTING CORP

E-mail: orders@asd-lighting.com | Web site: www.asd-lighting.com

