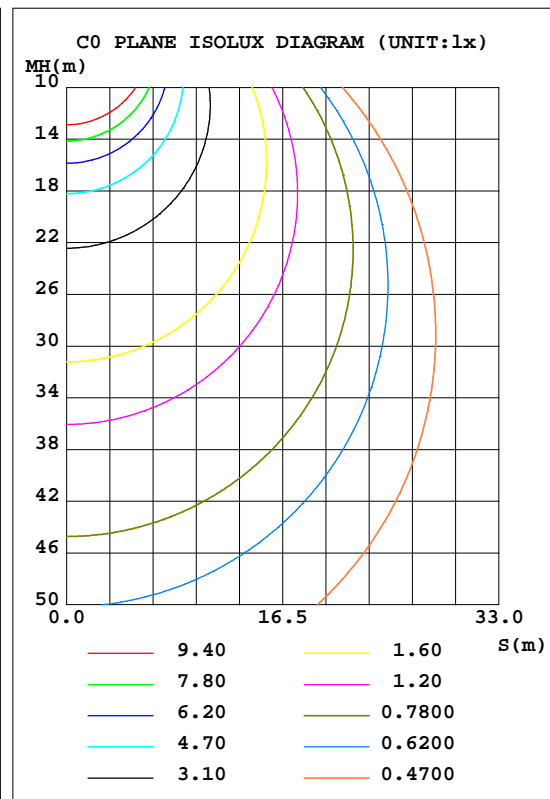
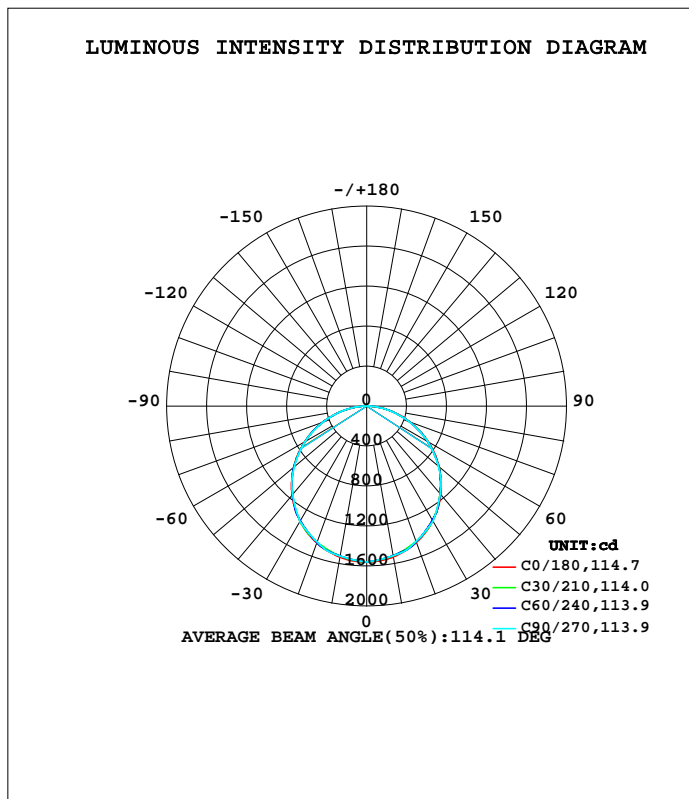


LUMINAIRE PHOTOMETRIC TEST REPORT

Test:U:120V I:0.3333A P:40W PF:0.9954 Lamp Flux:4540x1 lm		
NAME: ASD-ELP02-24D4035-STD	TYPE:LED PANEL	WEIGHT:
SPEC.:	DIM.: 603*1213mm	SERIAL No.:BLD20170531P17
MFR.: ASD Lighting corp	SUR.:0.558*1.17	Shielding Angle:

DATA OF LAMP		PHOTOMETRIC DATA Eff: 113.5 lm/W			
MODEL	ASD-ELP02-24D4035-STD	I _{max} (cd)	1560	S/MH(C0/180)	1.27
NOMINAL POWER(W)	40W	LOR(%)	100.0	S/MH(C90/270)	1.27
RATED VOLTAGE(V)		TOTAL FLUX(lm)	4540	η UP,DN(C0-180)	0.0,49.8
NOMINAL FLUX(lm)	4540	CIE CLASS	DIRECT	η UP,DN(C180-360)	0.0,50.2
LAMPS INSIDE	1	η up(%)	0.0	CIBSE SHR NOM	1.25
TEST VOLTAGE(V)		η down(%)	100.0	CIBSE SHR MAX	1.35



C Range: 0 - 360DEG
 C Interval: 5.0DEG
 Test Speed: HIGH
 Temperature:22DEG
 Operators:NEIKO
 Test Date:2017-05-31

γ Range: 0 - 180DEG
 γ Interval: 0.5DEG
 Test System:EVERFINE GO-2000B_V1 SYSTEM V2.0.350
 Humidity:55%
 Test Distance:12.218m [K=1.0000]
 Remarks:

ZONAL FLUX DIAGRAM

ZONAL FLUX DIAGRAM:

γ	C0	C45	C90	C135	C180	C225	C270	C315	γ	Φ zone	Φ total	%lum,lamp
5	1553	1542	1540	1543	1554	1545	1542	1544	0- 5	37.07	37.07	0.81,0.81
10	1532	1518	1521	1520	1535	1523	1525	1521	5- 10	109.7	146.8	3.21,3.21
15	1499	1488	1497	1490	1503	1494	1503	1492	10- 15	179.0	325.8	7.13,7.13
20	1453	1451	1443	1453	1458	1458	1449	1456	15- 20	242.6	568.4	12.4,12.4
25	1395	1387	1386	1391	1401	1396	1392	1393	20- 25	297.6	866.0	19,19
30	1325	1314	1328	1318	1332	1323	1334	1319	25- 30	343.3	1209	26.5,26.5
35	1245	1237	1237	1242	1253	1247	1244	1242	30- 35	378.0	1587	34.7,34.7
40	1154	1153	1145	1159	1163	1164	1153	1158	35- 40	399.4	1987	43.5,43.5
45	1054	1045	1052	1051	1063	1057	1060	1051	40- 45	408.2	2395	52.4,52.4
50	946.2	936.6	937.4	943.1	955.6	948.4	946.6	942.9	45- 50	403.9	2799	61.3,61.3
55	831.0	826.6	820.9	832.9	840.7	838.3	830.8	833.4	50- 55	385.7	3184	69.7,69.7
60	710.3	700.9	704.3	708.0	719.9	713.3	714.9	708.2	55- 60	355.5	3540	77.5,77.5
65	585.4	576.4	576.3	584.1	594.3	588.9	587.6	584.3	60- 65	314.4	3854	84.4,84.4
70	458.4	451.5	448.8	459.1	465.8	463.5	460.5	459.8	65- 70	263.5	4118	90.1,90.1
75	332.2	325.9	323.5	332.0	338.4	336.0	334.3	334.2	70- 75	205.5	4323	94.6,94.6
80	204.6	204.4	203.6	208.3	200.9	211.5	211.9	211.8	75- 80	142.7	4466	97.8,97.8
85	72.67	92.85	91.92	94.42	68.92	94.79	94.86	94.65	80- 85	79.54	4546	99.5,99.5
90	1.125	9.069	13.50	9.005	2.012	7.478	12.99	6.837	85- 90	21.95	4567	100,100
95	0	0	0	0	0	0	0	0	90- 95	0.9248	4568	100,100
100	0	0	0	0	0	0	0	0	95-100	0	4568	100,100
105	0	0	0	0	0	0	0	0	100-105	0	4568	100,100
110	0	0	0	0	0	0	0	0	105-110	0	4568	100,100
115	0	0	0	0	0	0	0	0	110-115	0	4568	100,100
120	0	0	0	0	0	0	0	0	115-120	0	4568	100,100
125	0	0	0	0	0	0	0	0	120-125	0	4568	100,100
130	0	0	0	0	0	0	0	0	125-130	0	4568	100,100
135	0	0	0	0	0	0	0	0	130-135	0	4568	100,100
140	0	0	0	0	0	0	0	0	135-140	0	4568	100,100
145	0	0	0	0	0	0	0	0	140-145	0	4568	100,100
150	0	0	0	0	0	0	0	0	145-150	0	4568	100,100
155	0	0	0	0	0	0	0	0	150-155	0	4568	100,100
160	0	0	0	0	0	0	0	0	155-160	0	4568	100,100
165	0	0	0	0	0	0	0	0	160-165	0	4568	100,100
170	0	0	0	0	0	0	0	0	165-170	0	4568	100,100
175	0	0	0	0	0	0	0	0	170-175	0	4568	100,100
180	0	0	0	0	0	0	0	0	175-180	0	4568	100,100
DEG	LUMINOUS INTENSITY:cd									UNIT:lm		

Conical surface Flux(90deg): 2394.8 lm

%lum = 52.4%
%lamp = 52.4%

Conical surface Flux(120deg): 3539.9 lm

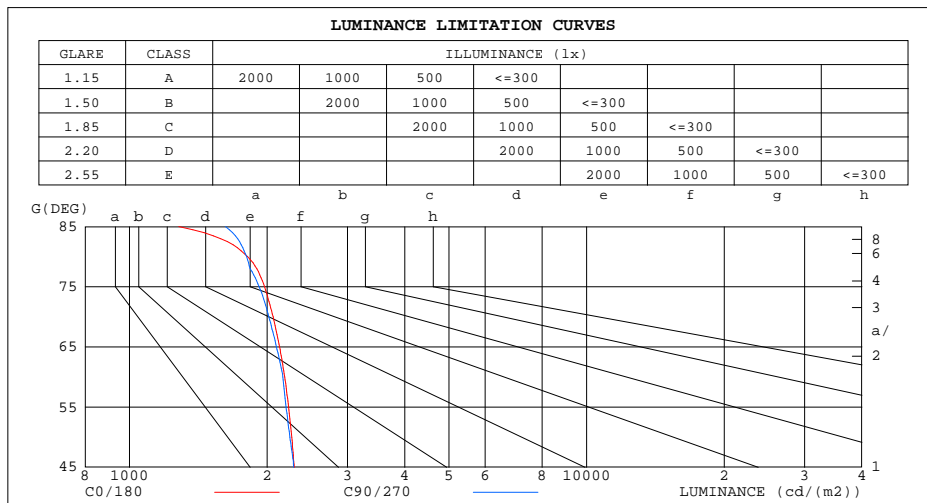
%lum = 77.5%
%lamp = 77.5%

C Range: 0 - 360DEG
C Interval: 5.0DEG
Test Speed: HIGH
Temperature:22DEG
Operators:NEIKO
Test Date:2017-05-31

γ Range: 0 - 180DEG
γ Interval: 0.5DEG
Test System:EVERFINE GO-2000B_V1 SYSTEM V2.0.350
Humidity:55%
Test Distance:12.218m [K=1.0000]
Remarks:

LUMINANCE LIMITATION CURVES

Test:U:120V I:0.3333A P:40W PF:0.9954 Lamp Flux:4540x1 lm		
NAME: ASD-ELP02-24D4035-STD	TYPE:LED PANEL	WEIGHT:
SPEC.:	DIM.: 603*1213mm	SERIAL No.:BLD20170531P17
MFR.: ASD Lighting corp	SUR.:0.558*1.17	Shielding Angle:



LUMINANCE cd/(m2)		
G(DEG)	C0/180	C90/270
85	1283	1623
80	1812	1804
75	1975	1923
70	2062	2019
65	2131	2098
60	2186	2167
55	2229	2202
50	2265	2244
45	2293	2288

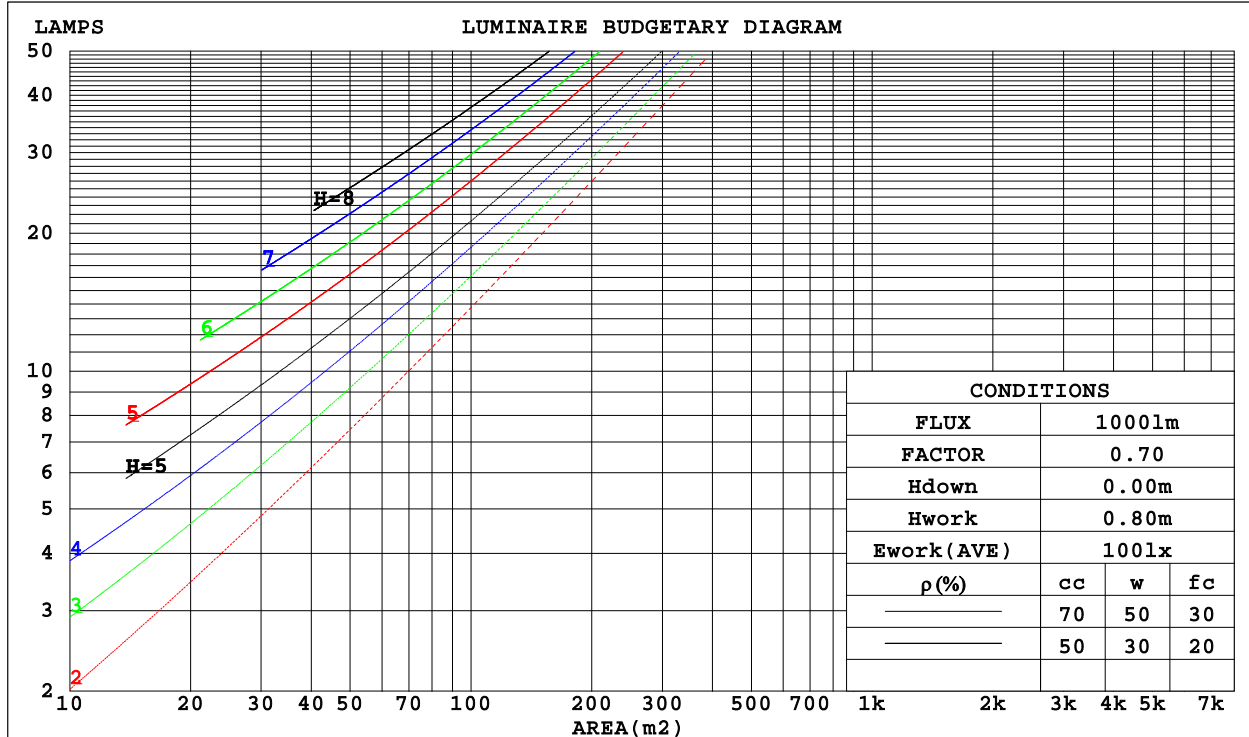
C Range: 0 - 360DEG
 C Interval: 5.0DEG
 Test Speed: HIGH
 Temperature:22DEG
 Operators:NEIKO
 Test Date:2017-05-31

γ Range: 0 - 180DEG
 γ Interval: 0.5DEG
 Test System:EVERFINE GO-2000B_V1 SYSTEM V2.0.350
 Humidity:55%
 Test Distance:12.218m [K=1.0000]
 Remarks:

CU AND LUMINAIRE BUDGETARY ESTIMATE DIAGRAM

Test:U:120V I:0.3333A P:40W PF:0.9954 Lamp Flux:4540x1 lm		
NAME: ASD-ELP02-24D4035-STD	TYPE:LED PANEL	WEIGHT:
SPEC.:	DIM.: 603*1213mm	SERIAL No.:BLD20170531P17
MFR.: ASD Lighting corp	SUR.:0.558*1.17	Shielding Angle:

ρ_{cc}	80%			70%			50%			30%			10%			0
ρ_w	50%	30%	10%	50%	30%	10%	50%	30%	10%	50%	30%	10%	50%	30%	10%	0
ρ_{fc}	20%			20%			20%			20%			20%			0
RCR	RCR:Room Cavity Ratio						Coefficients of Utilization(CU)									
0.0	1.19	1.19	1.19	1.16	1.16	1.16	1.11	1.11	1.11	1.06	1.06	1.06	1.02	1.02	1.02	.00
1.0	1.03	.99	.95	1.01	.97	.94	.97	.94	.91	.93	.90	.88	.89	.87	.85	.83
2.0	.90	.83	.77	.88	.82	.76	.84	.79	.74	.81	.77	.73	.78	.74	.71	.69
3.0	.79	.70	.64	.77	.69	.63	.74	.67	.62	.71	.66	.61	.69	.64	.60	.58
4.0	.70	.61	.54	.68	.60	.53	.66	.58	.53	.63	.57	.52	.61	.56	.51	.49
5.0	.62	.53	.46	.61	.52	.46	.59	.51	.45	.57	.50	.45	.55	.49	.44	.42
6.0	.56	.47	.40	.55	.46	.40	.53	.45	.40	.51	.45	.39	.50	.44	.39	.37
7.0	.51	.42	.35	.50	.41	.35	.48	.41	.35	.47	.40	.35	.45	.39	.35	.32
8.0	.46	.37	.32	.45	.37	.31	.44	.37	.31	.43	.36	.31	.42	.35	.31	.29
9.0	.42	.34	.28	.42	.34	.28	.41	.33	.28	.39	.33	.28	.38	.32	.28	.26
10.0	.39	.31	.26	.38	.31	.26	.37	.30	.26	.37	.30	.25	.36	.30	.25	.23



C Range: 0 - 360DEG
 C Interval: 5.0DEG
 Test Speed: HIGH
 Temperature:22DEG
 Operators:NEIKO
 Test Date:2017-05-31

γ Range: 0 - 180DEG
 γ Interval: 0.5DEG
 Test System:EVERFINE GO-2000B_V1 SYSTEM V2.0.350
 Humidity:55%
 Test Distance:12.218m [K=1.0000]
 Remarks:

WEC AND CCEC

Test:U:120V I:0.3333A P:40W PF:0.9954 Lamp Flux:4540x1 lm		
NAME: ASD-ELP02-24D4035-STD	TYPE:LED PANEL	WEIGHT:
SPEC.:	DIM.: 603*1213mm	SERIAL No.:BLD20170531P17
MFR.: ASD Lighting corp	SUR.:0.558*1.17	Shielding Angle:

pcc	80%			70%			50%			30%			10%			0
pw	50%	30%	10%	50%	30%	10%	50%	30%	10%	50%	30%	10%	50%	30%	10%	0
pfc	20%			20%			20%			20%			20%			0
RCR	RCR:Room Cavity Ratio						Wall Exitance Coefficients(WEC)									
0.0																
1.0	.318	.181	.057	.311	.177	.056	.297	.170	.054	.285	.164	.053	.274	.159	.051	
2.0	.297	.163	.050	.291	.160	.049	.279	.155	.048	.268	.151	.047	.258	.146	.046	
3.0	.274	.146	.044	.269	.144	.043	.258	.140	.043	.249	.136	.042	.240	.133	.041	
4.0	.252	.131	.039	.248	.130	.038	.238	.126	.038	.230	.123	.037	.222	.120	.037	
5.0	.233	.119	.034	.229	.117	.034	.220	.115	.034	.213	.112	.033	.206	.110	.033	
6.0	.216	.108	.031	.212	.107	.031	.205	.105	.030	.198	.103	.030	.191	.101	.030	
7.0	.201	.099	.028	.197	.098	.028	.191	.096	.028	.184	.095	.028	.179	.093	.027	
8.0	.187	.091	.026	.184	.091	.026	.178	.089	.025	.173	.088	.025	.168	.086	.025	
9.0	.175	.085	.024	.172	.084	.024	.167	.083	.023	.162	.081	.023	.158	.080	.023	
10.0	.165	.079	.022	.162	.078	.022	.157	.077	.022	.153	.076	.022	.149	.075	.021	

pcc	80%			70%			50%			30%			10%			0
pw	50%	30%	10%	50%	30%	10%	50%	30%	10%	50%	30%	10%	50%	30%	10%	0
pfc	20%			20%			20%			20%			20%			0
RCR	RCR:Room Cavity Ratio						Ceiling Cavity Exitance Coefficients(CCEC)									
0.0	.191	.191	.191	.163	.163	.163	.111	.111	.111	.064	.064	.064	.020	.020	.020	
1.0	.181	.156	.134	.155	.134	.115	.106	.092	.080	.061	.053	.046	.020	.017	.015	
2.0	.173	.132	.097	.148	.114	.084	.102	.079	.059	.059	.046	.034	.019	.015	.011	
3.0	.165	.114	.074	.142	.099	.064	.097	.069	.045	.056	.040	.026	.018	.013	.009	
4.0	.158	.101	.058	.135	.087	.050	.093	.061	.035	.054	.036	.021	.017	.012	.007	
5.0	.150	.091	.047	.129	.079	.041	.089	.055	.029	.052	.032	.017	.017	.011	.006	
6.0	.143	.082	.039	.123	.071	.034	.085	.050	.024	.049	.029	.014	.016	.010	.005	
7.0	.136	.076	.033	.117	.066	.029	.081	.046	.020	.047	.027	.012	.015	.009	.004	
8.0	.130	.070	.029	.112	.061	.025	.077	.043	.018	.045	.025	.011	.015	.008	.003	
9.0	.124	.065	.025	.106	.056	.022	.074	.040	.016	.043	.023	.009	.014	.008	.003	
10.0	.118	.061	.022	.102	.053	.020	.070	.037	.014	.041	.022	.008	.013	.007	.003	

C Range: 0 - 360DEG
 C Interval: 5.0DEG
 Test Speed: HIGH
 Temperature:22DEG
 Operators:NEIKO
 Test Date:2017-05-31

γ Range: 0 - 180DEG
 γ Interval: 0.5DEG
 Test System:EVERFINE GO-2000B_V1 SYSTEM V2.0.350
 Humidity:55%
 Test Distance:12.218m [K=1.0000]
 Remarks:

UGR(Unified Glare Rating) Table

Test:U:120V I:0.3333A P:40W PF:0.9954 Lamp Flux:4540x1 lm										
NAME: ASD-ELP02-24D4035-STD					TYPE:LED PANEL			WEIGHT:		
SPEC.:					DIM.: 603*1213mm			SERIAL No.:BLD20170531P17		
MFR.: ASD Lighting corp					SUR.:0.558*1.17			Shielding Angle:		
ceiling/cavity	0.7	0.7	0.5	0.5	0.3	0.7	0.7	0.5	0.5	0.3
walls	0.5	0.3	0.5	0.3	0.3	0.5	0.3	0.5	0.3	0.3
working plane	0.2	0.2	0.2	0.2	0.2	0.2	0.2	0.2	0.2	0.2
Room dimensions	Viewed crosswise					Viewed endwise				
x = 2H y = 2H	15.6	17.2	15.9	17.4	17.6	15.6	17.1	15.9	17.3	17.6
3H 4H 6H 8H 12H	17.2	18.7	17.5	18.9	19.1	17.2	18.6	17.5	18.9	19.1
	17.9	19.3	18.2	19.5	19.8	17.9	19.2	18.2	19.5	19.7
4H 2H	18.3	19.6	18.7	19.9	20.2	18.3	19.6	18.7	19.9	20.2
3H 4H 6H 8H	18.5	19.7	18.8	20.0	20.3	18.5	19.8	18.9	20.0	20.3
12H	18.5	19.7	18.9	20.0	20.3	18.6	19.8	19.0	20.1	20.4
8H 4H	16.3	17.6	16.6	17.9	18.1	16.2	17.6	16.6	17.8	18.1
6H 8H 12H	18.1	19.3	18.4	19.5	19.9	18.0	19.2	18.4	19.5	19.8
	18.8	19.9	19.2	20.3	20.6	18.8	19.9	19.2	20.2	20.6
12H 4H	19.4	20.4	19.8	20.7	21.1	19.4	20.4	19.8	20.8	21.1
6H	19.6	20.5	20.0	20.8	21.2	19.7	20.6	20.1	20.9	21.3
8H	19.7	20.5	20.1	20.9	21.3	19.8	20.7	20.3	21.1	21.5
	19.1	20.0	19.6	20.4	20.8	19.1	20.0	19.5	20.4	20.8
	19.9	20.6	20.3	21.0	21.5	19.9	20.7	20.3	21.1	21.5
	20.1	20.8	20.6	21.2	21.7	20.2	20.9	20.7	21.3	21.8
	20.3	20.9	20.8	21.3	21.8	20.5	21.1	21.0	21.5	22.0
	19.2	20.0	19.6	20.4	20.8	19.1	20.0	19.6	20.3	20.8
	19.9	20.6	20.4	21.0	21.5	20.0	20.6	20.4	21.1	21.5
	20.3	20.8	20.7	21.3	21.8	20.4	20.9	20.8	21.4	21.9
Variations with the observer position at spacings:										
S = 1.0H	+ 0.1 / - 0.2					+ 0.1 / - 0.2				
1.5H	+ 0.1 / - 0.3					+ 0.2 / - 0.3				
2.0H	+ 0.2 / - 0.2					+ 0.1 / - 0.3				

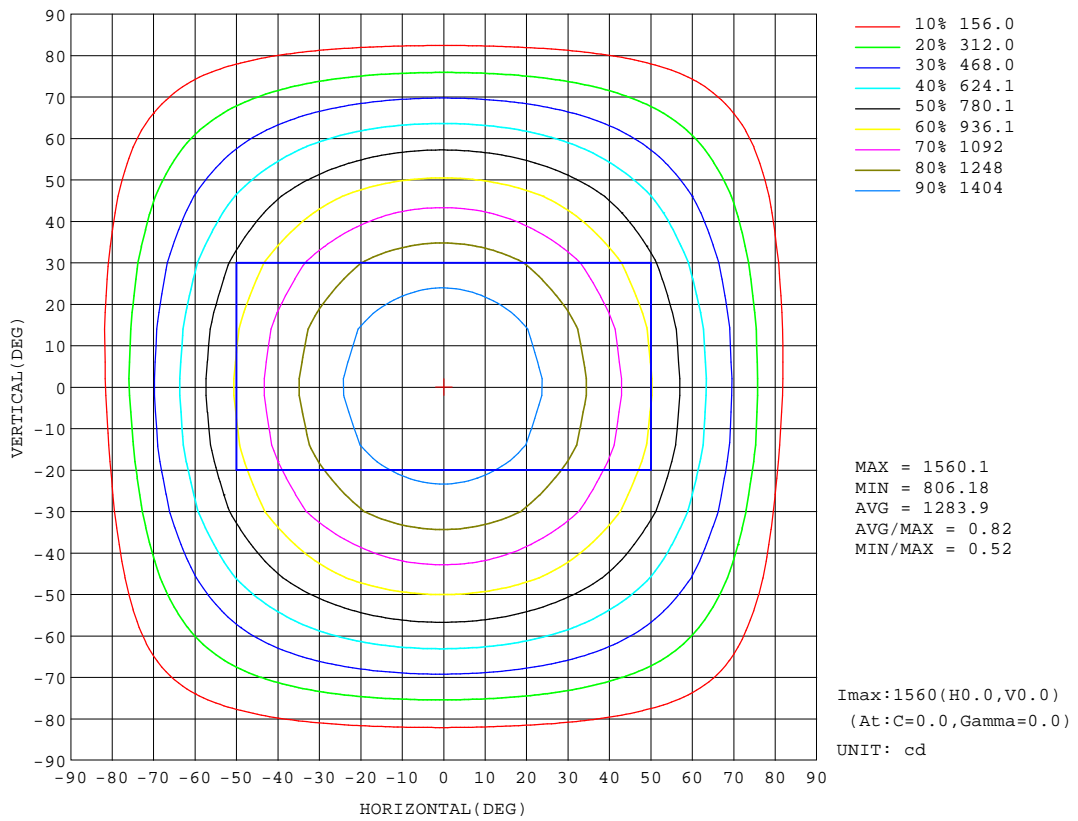
CIE Pub.117 Corrected 4568 lm Total Lamp Luminous Flux.(8log(F/F0) = 5.3)

C Range: 0 - 360DEG
 C Interval: 5.0DEG
 Test Speed: HIGH
 Temperature:22DEG
 Operators:NEIKO
 Test Date:2017-05-31

γ Range: 0 - 180DEG
 γ Interval: 0.5DEG
 Test System:EVERFINE GO-2000B_V1 SYSTEM V2.0.350
 Humidity:55%
 Test Distance:12.218m [K=1.0000]
 Remarks:

ISOCANDELA DIAGRAM

Test:U:120V I:0.3333A P:40W PF:0.9954 Lamp Flux:4540x1 lm		
NAME: ASD-ELP02-24D4035-STD	TYPE:LED PANEL	WEIGHT:
SPEC.:	DIM.: 603*1213mm	SERIAL No.:BLD20170531P17
MFR.: ASD Lighting corp	SUR.:0.558*1.17	Shielding Angle:



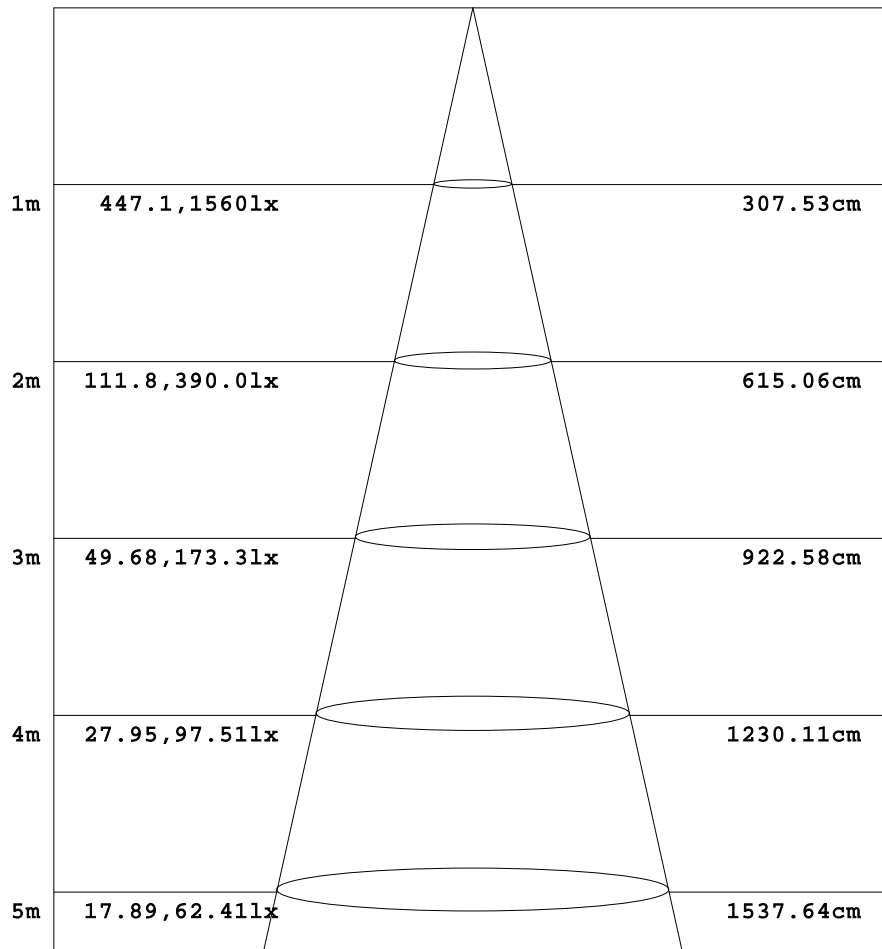
C Range: 0 - 360DEG
 C Interval: 5.0DEG
 Test Speed: HIGH
 Temperature:22DEG
 Operators:NEIKO
 Test Date:2017-05-31

γ Range: 0 - 180DEG
 γ Interval: 0.5DEG
 Test System:EVERFINE GO-2000B_V1 SYSTEM V2.0.350
 Humidity:55%
 Test Distance:12.218m [K=1.0000]
 Remarks:

AAI Figure

Test:U:120V I:0.3333A P:40W PF:0.9954 Lamp Flux:4540x1 lm		
NAME: ASD-ELP02-24D4035-STD	TYPE:LED PANEL	WEIGHT:
SPEC.:	DIM.: 603*1213mm	SERIAL No.:BLD20170531P17
MFR.: ASD Lighting corp	SUR.:0.558*1.17	Shielding Angle:

Flux out:3331 lm



Height Eavg, Emax Angle: 113.92deg Diameter

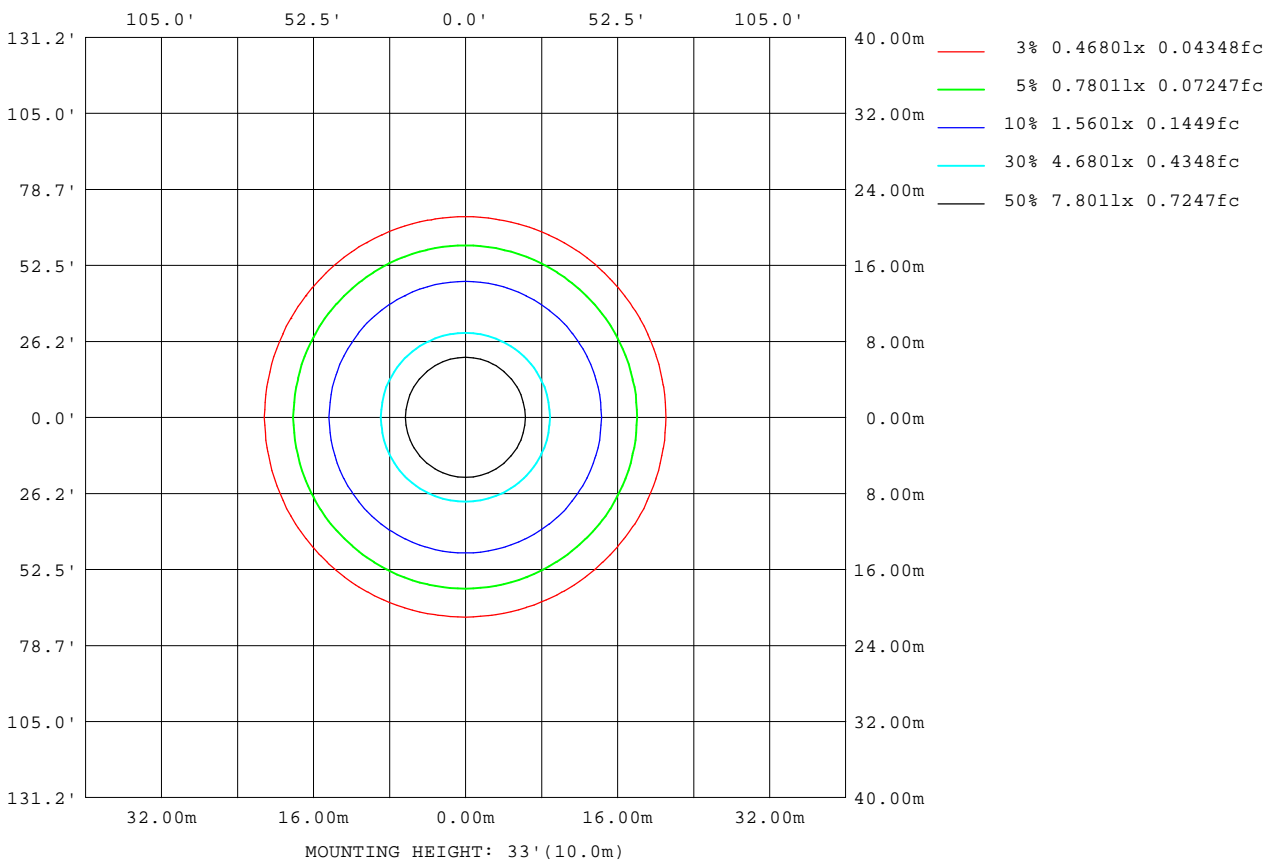
Note: The Curves indicate the illuminated area and the average illumination when the luminaire is at different distance.

C Range: 0 - 360DEG
 C Interval: 5.0DEG
 Test Speed: HIGH
 Temperature: 22DEG
 Operators: NEIKO
 Test Date: 2017-05-31

γ Range: 0 - 180DEG
 γ Interval: 0.5DEG
 Test System: EVERFINE GO-2000B_V1 SYSTEM V2.0.350
 Humidity: 55%
 Test Distance: 12.218m [K=1.0000]
 Remarks:

ISOLUX DIAGRAM

Test:U:120V I:0.3333A P:40W PF:0.9954 Lamp Flux:4540x1 lm		
NAME: ASD-ELP02-24D4035-STD	TYPE:LED PANEL	WEIGHT:
SPEC.:	DIM.: 603*1213mm	SERIAL No.:BLD20170531P17
MFR.: ASD Lighting corp	SUR.:0.558*1.17	Shielding Angle:



C Range: 0 - 360DEG
 C Interval: 5.0DEG
 Test Speed: HIGH
 Temperature:22DEG
 Operators:NEIKO
 Test Date:2017-05-31

γ Range: 0 - 180DEG
 γ Interval: 0.5DEG
 Test System:EVERFINE GO-2000B_V1 SYSTEM V2.0.350
 Humidity:55%
 Test Distance:12.218m [K=1.0000]
 Remarks:

LED Avg.L Report

Test:U:120V I:0.3333A P:40W PF:0.9954 Lamp Flux:4540x1 lm		
NAME: ASD-ELP02-24D4035-STD	TYPE:LED PANEL	WEIGHT:
SPEC.:	DIM.: 603*1213mm	SERIAL No.:BLD20170531P17
MFR.: ASD Lighting corp	SUR.:0.558*1.17	Shielding Angle:

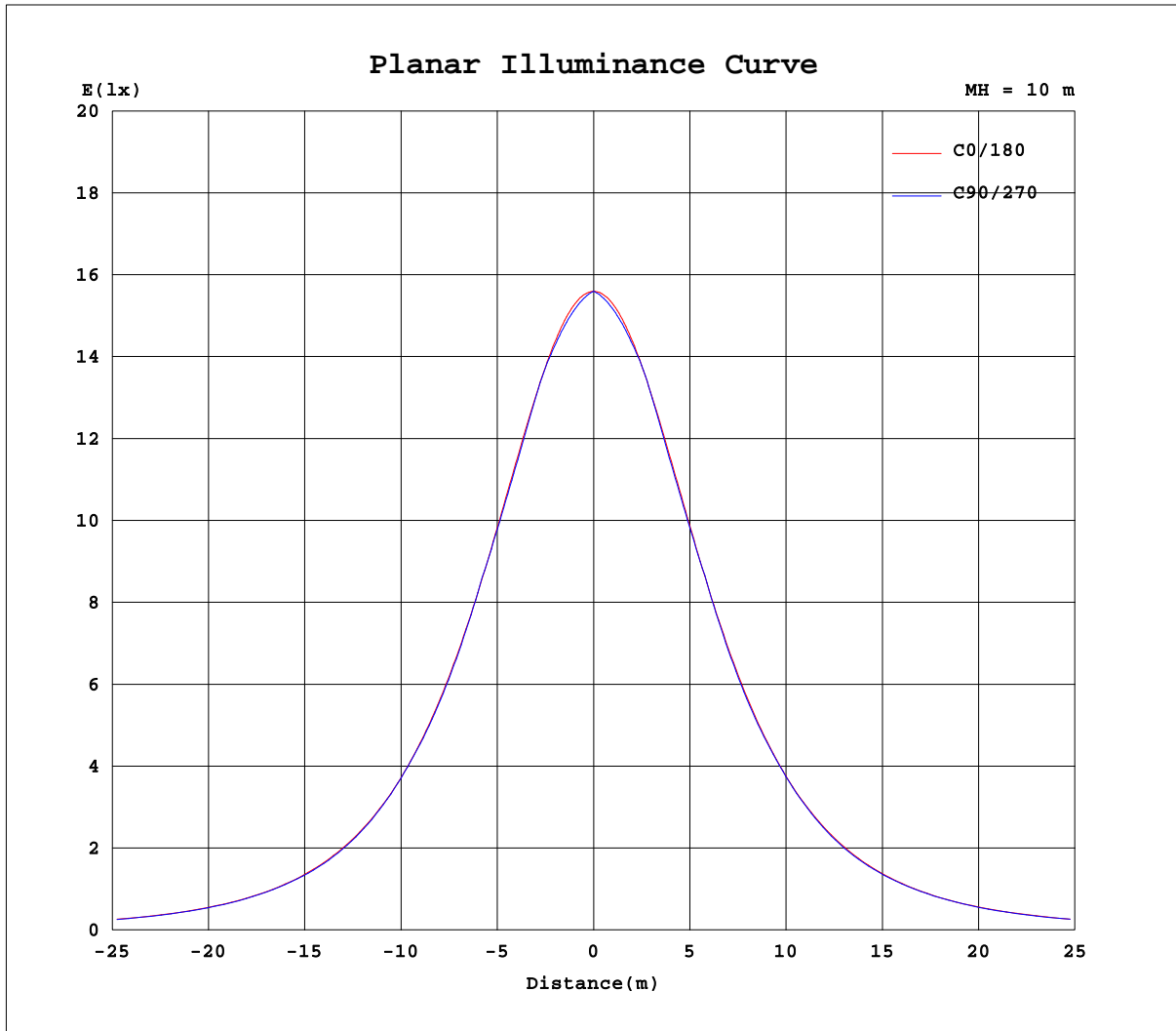
AvgL	cd/m2
L_0~180(65)av	2147
L_0~180(75)av	1993
L_0~180(85)av	1250
L_90~270(65)av	2118
L_90~270(75)av	1955
L_90~270(85)av	1648
L_45(65)av	2124
L_45(75)av	1974
L_45(85)av	1662

Standard: GB/T 29293-2012

C Range: 0 - 360DEG
 C Interval: 5.0DEG
 Test Speed: HIGH
 Temperature:22DEG
 Operators:NEIKO
 Test Date:2017-05-31

γ Range: 0 - 180DEG
 γ Interval: 0.5DEG
 Test System:EVERFINE GO-2000B_V1 SYSTEM V2.0.350
 Humidity:55%
 Test Distance:12.218m [K=1.0000]
 Remarks:

Planar Illuminance Curve



C Range: 0 - 360DEG
 C Interval: 5.0DEG
 Test Speed: HIGH
 Temperature: 22DEG
 Operators: NEIKO
 Test Date: 2017-05-31

γ Range: 0 - 180DEG
 γ Interval: 0.5DEG
 Test System: EVERFINE GO-2000B_V1 SYSTEM V2.0.350
 Humidity: 55%
 Test Distance: 12.218m [K=1.0000]
 Remarks:

LUMINOUS DISTRIBUTION INTENSITY DATA

Test:U:120V I:0.3333A P:40W PF:0.9954 Lamp Flux:4540x1 lm		
NAME: ASD-ELP02-24D4035-STD	TYPE:LED PANEL	WEIGHT:
SPEC.:	DIM.: 603*1213mm	SERIAL No.:BLD20170531P17
MFR.: ASD Lighting corp	SUR.:0.558*1.17	Shielding Angle:

Table--1

UNIT: cd

C(DEG) γ (DEG)	0	5	10	15	20	25	30	35	40	45	50	55	60	65	70	75	80	85	90
0	1560	1560	1560	1560	1560	1560	1560	1560	1560	1560	1560	1560	1560	1560	1560	1560	1560	1560	1560
5	1553	1551	1550	1548	1547	1546	1545	1544	1543	1542	1542	1541	1541	1541	1541	1540	1540	1540	1540
10	1532	1529	1526	1524	1522	1521	1520	1519	1519	1518	1518	1519	1519	1519	1520	1520	1520	1521	1521
15	1499	1494	1491	1488	1486	1485	1485	1486	1487	1488	1490	1492	1494	1496	1497	1497	1497	1497	1497
20	1453	1447	1443	1440	1439	1440	1442	1444	1448	1451	1451	1449	1447	1445	1444	1444	1443	1443	1443
25	1395	1388	1384	1382	1383	1385	1390	1393	1391	1387	1385	1384	1383	1383	1384	1384	1385	1385	1386
30	1325	1317	1314	1313	1316	1322	1323	1318	1315	1314	1314	1315	1317	1320	1322	1324	1326	1327	1328
35	1245	1236	1233	1235	1241	1242	1236	1234	1234	1237	1240	1245	1242	1240	1238	1237	1237	1237	1237
40	1154	1145	1144	1148	1153	1146	1144	1145	1150	1153	1148	1145	1144	1143	1144	1144	1145	1145	1145
45	1054	1046	1046	1053	1047	1045	1047	1053	1048	1045	1044	1044	1045	1047	1049	1051	1051	1051	1052
50	946	938	941	943	938	940	944	938	936	937	939	942	942	940	938	938	937	937	937
55	831	824	830	825	825	828	823	822	825	827	824	822	821	820	820	820	820	820	821
60	710	704	709	704	708	703	703	706	704	701	700	699	699	700	701	702	703	704	704
65	585	582	581	584	579	581	581	578	577	576	577	578	577	576	576	576	576	576	576
70	458	458	454	451	453	453	452	452	453	452	451	450	449	448	448	448	448	448	449
75	332	327	318	317	319	322	326	327	327	326	325	325	324	324	323	323	323	323	323
80	205	183	183	186	193	199	203	204	205	204	203	202	202	203	203	203	203	203	204
85	72.7	65.4	71.2	77.8	82.7	85.7	89.3	91.4	92.5	92.9	92.5	92.1	91.8	91.5	91.3	91.2	91.4	91.7	91.9
90	1.13	3.34	3.82	4.39	5.13	6.04	6.88	7.67	8.41	9.07	9.70	10.3	10.9	11.5	12.0	12.5	13.0	13.3	13.5
95	0.00	0.00	0.00	0.00	0.00	0.00	0.00	0.00	0.00	0.00	0.00	0.00	0.00	0.00	0.00	0.00	0.00	0.00	0.00
100	0.00	0.00	0.00	0.00	0.00	0.00	0.00	0.00	0.00	0.00	0.00	0.00	0.00	0.00	0.00	0.00	0.00	0.00	0.00
105	0.00	0.00	0.00	0.00	0.00	0.00	0.00	0.00	0.00	0.00	0.00	0.00	0.00	0.00	0.00	0.00	0.00	0.00	0.00
110	0.00	0.00	0.00	0.00	0.00	0.00	0.00	0.00	0.00	0.00	0.00	0.00	0.00	0.00	0.00	0.00	0.00	0.00	0.00
115	0.00	0.00	0.00	0.00	0.00	0.00	0.00	0.00	0.00	0.00	0.00	0.00	0.00	0.00	0.00	0.00	0.00	0.00	0.00
120	0.00	0.00	0.00	0.00	0.00	0.00	0.00	0.00	0.00	0.00	0.00	0.00	0.00	0.00	0.00	0.00	0.00	0.00	0.00
125	0.00	0.00	0.00	0.00	0.00	0.00	0.00	0.00	0.00	0.00	0.00	0.00	0.00	0.00	0.00	0.00	0.00	0.00	0.00
130	0.00	0.00	0.00	0.00	0.00	0.00	0.00	0.00	0.00	0.00	0.00	0.00	0.00	0.00	0.00	0.00	0.00	0.00	0.00
135	0.00	0.00	0.00	0.00	0.00	0.00	0.00	0.00	0.00	0.00	0.00	0.00	0.00	0.00	0.00	0.00	0.00	0.00	0.00
140	0.00	0.00	0.00	0.00	0.00	0.00	0.00	0.00	0.00	0.00	0.00	0.00	0.00	0.00	0.00	0.00	0.00	0.00	0.00
145	0.00	0.00	0.00	0.00	0.00	0.00	0.00	0.00	0.00	0.00	0.00	0.00	0.00	0.00	0.00	0.00	0.00	0.00	0.00
150	0.00	0.00	0.00	0.00	0.00	0.00	0.00	0.00	0.00	0.00	0.00	0.00	0.00	0.00	0.00	0.00	0.00	0.00	0.00
155	0.00	0.00	0.00	0.00	0.00	0.00	0.00	0.00	0.00	0.00	0.00	0.00	0.00	0.00	0.00	0.00	0.00	0.00	0.00
160	0.00	0.00	0.00	0.00	0.00	0.00	0.00	0.00	0.00	0.00	0.00	0.00	0.00	0.00	0.00	0.00	0.00	0.00	0.00
165	0.00	0.00	0.00	0.00	0.00	0.00	0.00	0.00	0.00	0.00	0.00	0.00	0.00	0.00	0.00	0.00	0.00	0.00	0.00
170	0.00	0.00	0.00	0.00	0.00	0.00	0.00	0.00	0.00	0.00	0.00	0.00	0.00	0.00	0.00	0.00	0.00	0.00	0.00
175	0.00	0.00	0.00	0.00	0.00	0.00	0.00	0.00	0.00	0.00	0.00	0.00	0.00	0.00	0.00	0.00	0.00	0.00	0.00
180	0.00	0.00	0.00	0.00	0.00	0.00	0.00	0.00	0.00	0.00	0.00	0.00	0.00	0.00	0.00	0.00	0.00	0.00	0.00

C Range: 0 - 360DEG
 C Interval: 5.0DEG
 Test Speed: HIGH
 Temperature:22DEG
 Operators:NEIKO
 Test Date:2017-05-31

γ Range: 0 - 180DEG
 γ Interval: 0.5DEG
 Test System:EVERFINE GO-2000B_V1 SYSTEM V2.0.350
 Humidity:55%
 Test Distance:12.218m [K=1.0000]
 Remarks:

LUMINOUS DISTRIBUTION INTENSITY DATA

Test:U:120V I:0.3333A P:40W PF:0.9954 Lamp Flux:4540x1 lm		
NAME: ASD-ELP02-24D4035-STD	TYPE:LED PANEL	WEIGHT:
SPEC.:	DIM.: 603*1213mm	SERIAL No.:BLD20170531P17
MFR.: ASD Lighting corp	SUR.:0.558*1.17	Shielding Angle:

Table--2

UNIT: cd

C(DEG) γ (DEG)	95	100	105	110	115	120	125	130	135	140	145	150	155	160	165	170	175	180	185
0	1560	1560	1560	1560	1560	1560	1560	1560	1560	1560	1560	1560	1560	1560	1560	1560	1560	1560	1560
5	1540	1541	1541	1541	1541	1542	1542	1543	1543	1544	1545	1546	1547	1548	1550	1551	1553	1554	1553
10	1521	1521	1521	1520	1520	1520	1520	1520	1520	1520	1521	1522	1523	1525	1527	1529	1532	1535	1532
15	1497	1498	1498	1498	1497	1495	1494	1492	1490	1489	1488	1488	1488	1490	1491	1494	1498	1503	1499
20	1444	1444	1445	1446	1447	1449	1452	1453	1453	1451	1448	1445	1444	1444	1445	1448	1452	1458	1453
25	1386	1386	1386	1386	1386	1386	1387	1388	1391	1395	1396	1394	1390	1388	1387	1389	1394	1401	1395
30	1328	1328	1326	1325	1323	1321	1319	1318	1318	1319	1323	1328	1327	1322	1319	1320	1324	1332	1325
35	1237	1238	1239	1241	1243	1246	1250	1245	1242	1240	1240	1242	1247	1247	1241	1240	1244	1253	1245
40	1146	1146	1146	1146	1147	1148	1150	1154	1159	1157	1152	1150	1152	1159	1155	1151	1153	1163	1155
45	1052	1052	1053	1052	1050	1049	1049	1049	1051	1055	1061	1055	1052	1055	1060	1053	1054	1063	1055
50	938	939	940	942	944	946	947	945	943	943	946	953	948	946	950	949	946	956	948
55	821	822	822	823	824	826	827	830	833	832	830	831	838	834	833	837	832	841	833
60	705	705	705	705	705	705	706	706	708	711	714	711	711	718	712	716	712	720	713
65	577	578	579	580	581	583	585	585	584	584	585	588	586	584	590	586	588	594	589
70	449	450	451	452	453	455	456	458	459	461	459	456	454	452	450	452	459	466	464
75	324	325	326	327	328	329	330	331	332	333	332	329	325	319	316	314	319	338	336
80	204	204	205	206	206	206	207	208	208	208	207	205	201	197	188	180	179	201	208
85	91.8	92.0	92.2	92.6	93.1	93.4	93.8	94.3	94.4	94.2	93.6	92.1	89.4	85.9	80.0	71.9	62.5	68.9	84.8
90	13.3	13.0	12.6	12.2	11.7	11.0	10.3	9.62	9.01	8.45	7.92	7.29	6.50	5.58	4.72	4.02	3.58	2.01	1.34
95	0.00	0.00	0.00	0.00	0.00	0.00	0.00	0.00	0.00	0.00	0.00	0.00	0.00	0.00	0.00	0.00	0.00	0.00	0.00
100	0.00	0.00	0.00	0.00	0.00	0.00	0.00	0.00	0.00	0.00	0.00	0.00	0.00	0.00	0.00	0.00	0.00	0.00	0.00
105	0.00	0.00	0.00	0.00	0.00	0.00	0.00	0.00	0.00	0.00	0.00	0.00	0.00	0.00	0.00	0.00	0.00	0.00	0.00
110	0.00	0.00	0.00	0.00	0.00	0.00	0.00	0.00	0.00	0.00	0.00	0.00	0.00	0.00	0.00	0.00	0.00	0.00	0.00
115	0.00	0.00	0.00	0.00	0.00	0.00	0.00	0.00	0.00	0.00	0.00	0.00	0.00	0.00	0.00	0.00	0.00	0.00	0.00
120	0.00	0.00	0.00	0.00	0.00	0.00	0.00	0.00	0.00	0.00	0.00	0.00	0.00	0.00	0.00	0.00	0.00	0.00	0.00
125	0.00	0.00	0.00	0.00	0.00	0.00	0.00	0.00	0.00	0.00	0.00	0.00	0.00	0.00	0.00	0.00	0.00	0.00	0.00
130	0.00	0.00	0.00	0.00	0.00	0.00	0.00	0.00	0.00	0.00	0.00	0.00	0.00	0.00	0.00	0.00	0.00	0.00	0.00
135	0.00	0.00	0.00	0.00	0.00	0.00	0.00	0.00	0.00	0.00	0.00	0.00	0.00	0.00	0.00	0.00	0.00	0.00	0.00
140	0.00	0.00	0.00	0.00	0.00	0.00	0.00	0.00	0.00	0.00	0.00	0.00	0.00	0.00	0.00	0.00	0.00	0.00	0.00
145	0.00	0.00	0.00	0.00	0.00	0.00	0.00	0.00	0.00	0.00	0.00	0.00	0.00	0.00	0.00	0.00	0.00	0.00	0.00
150	0.00	0.00	0.00	0.00	0.00	0.00	0.00	0.00	0.00	0.00	0.00	0.00	0.00	0.00	0.00	0.00	0.00	0.00	0.00
155	0.00	0.00	0.00	0.00	0.00	0.00	0.00	0.00	0.00	0.00	0.00	0.00	0.00	0.00	0.00	0.00	0.00	0.00	0.00
160	0.00	0.00	0.00	0.00	0.00	0.00	0.00	0.00	0.00	0.00	0.00	0.00	0.00	0.00	0.00	0.00	0.00	0.00	0.00
165	0.00	0.00	0.00	0.00	0.00	0.00	0.00	0.00	0.00	0.00	0.00	0.00	0.00	0.00	0.00	0.00	0.00	0.00	0.00
170	0.00	0.00	0.00	0.00	0.00	0.00	0.00	0.00	0.00	0.00	0.00	0.00	0.00	0.00	0.00	0.00	0.00	0.00	0.00
175	0.00	0.00	0.00	0.00	0.00	0.00	0.00	0.00	0.00	0.00	0.00	0.00	0.00	0.00	0.00	0.00	0.00	0.00	0.00
180	0.00	0.00	0.00	0.00	0.00	0.00	0.00	0.00	0.00	0.00	0.00	0.00	0.00	0.00	0.00	0.00	0.00	0.00	0.00

C Range: 0 - 360DEG
 C Interval: 5.0DEG
 Test Speed: HIGH
 Temperature:22DEG
 Operators:NEIKO
 Test Date:2017-05-31

γ Range: 0 - 180DEG
 γ Interval: 0.5DEG
 Test System:EVERFINE GO-2000B_V1 SYSTEM V2.0.350
 Humidity:55%
 Test Distance:12.218m [K=1.0000]
 Remarks:

LUMINOUS DISTRIBUTION INTENSITY DATA

Test:U:120V I:0.3333A P:40W PF:0.9954 Lamp Flux:4540x1 lm		
NAME: ASD-ELP02-24D4035-STD	TYPE:LED PANEL	WEIGHT:
SPEC.:	DIM.: 603*1213mm	SERIAL No.:BLD20170531P17
MFR.: ASD Lighting corp	SUR.:0.558*1.17	Shielding Angle:

Table--3

UNIT: cd

C(DEG) γ (DEG)	190	195	200	205	210	215	220	225	230	235	240	245	250	255	260	265	270	275	280
0	1560	1560	1560	1560	1560	1560	1560	1560	1560	1560	1560	1560	1560	1560	1560	1560	1560	1560	1560
5	1551	1550	1549	1548	1547	1546	1545	1545	1544	1544	1543	1543	1543	1543	1542	1542	1542	1542	1542
10	1530	1527	1526	1525	1524	1523	1523	1523	1523	1523	1523	1524	1524	1524	1524	1525	1525	1524	1524
15	1495	1493	1491	1491	1491	1492	1493	1494	1496	1498	1500	1502	1503	1503	1503	1503	1503	1503	1502
20	1449	1447	1446	1447	1449	1452	1456	1458	1459	1457	1455	1453	1452	1451	1450	1449	1449	1449	1449
25	1391	1390	1391	1394	1399	1401	1400	1396	1394	1392	1392	1391	1391	1392	1392	1392	1392	1391	1391
30	1322	1322	1325	1332	1333	1327	1325	1323	1324	1325	1326	1328	1331	1332	1334	1334	1334	1333	1332
35	1242	1244	1251	1252	1246	1244	1245	1247	1251	1255	1252	1249	1247	1246	1245	1244	1244	1243	1243
40	1153	1158	1163	1156	1155	1156	1161	1164	1159	1156	1154	1154	1153	1153	1153	1153	1153	1153	1152
45	1056	1063	1058	1056	1059	1066	1060	1057	1055	1055	1056	1058	1059	1061	1060	1060	1060	1060	1059
50	951	953	949	952	956	950	948	948	951	953	954	951	950	949	948	947	947	946	946
55	840	835	836	840	835	834	836	838	836	834	833	832	832	831	831	831	831	830	830
60	718	714	720	714	714	717	715	713	712	712	713	713	714	715	715	715	715	714	713
65	589	594	589	590	591	589	588	589	591	591	590	590	589	589	588	588	588	587	587
70	463	462	463	462	462	463	464	463	463	463	462	462	461	461	461	461	460	460	460
75	336	337	334	336	336	336	336	336	336	336	336	336	335	335	335	334	334	334	335
80	209	207	208	207	209	210	211	211	212	211	212	212	212	212	212	212	212	212	212
85	82.9	83.5	88.0	90.5	92.3	93.5	94.3	94.8	95.1	95.0	95.1	94.9	94.7	94.5	94.7	94.8	94.9	94.8	94.6
90	1.35	1.46	2.44	3.38	4.36	5.44	6.48	7.48	8.43	9.33	10.2	10.8	11.4	11.9	12.5	12.9	13.0	12.8	12.4
95	0.00	0.00	0.00	0.00	0.00	0.00	0.00	0.00	0.00	0.00	0.00	0.00	0.00	0.00	0.00	0.00	0.00	0.00	0.00
100	0.00	0.00	0.00	0.00	0.00	0.00	0.00	0.00	0.00	0.00	0.00	0.00	0.00	0.00	0.00	0.00	0.00	0.00	0.00
105	0.00	0.00	0.00	0.00	0.00	0.00	0.00	0.00	0.00	0.00	0.00	0.00	0.00	0.00	0.00	0.00	0.00	0.00	0.00
110	0.00	0.00	0.00	0.00	0.00	0.00	0.00	0.00	0.00	0.00	0.00	0.00	0.00	0.00	0.00	0.00	0.00	0.00	0.00
115	0.00	0.00	0.00	0.00	0.00	0.00	0.00	0.00	0.00	0.00	0.00	0.00	0.00	0.00	0.00	0.00	0.00	0.00	0.00
120	0.00	0.00	0.00	0.00	0.00	0.00	0.00	0.00	0.00	0.00	0.00	0.00	0.00	0.00	0.00	0.00	0.00	0.00	0.00
125	0.00	0.00	0.00	0.00	0.00	0.00	0.00	0.00	0.00	0.00	0.00	0.00	0.00	0.00	0.00	0.00	0.00	0.00	0.00
130	0.00	0.00	0.00	0.00	0.00	0.00	0.00	0.00	0.00	0.00	0.00	0.00	0.00	0.00	0.00	0.00	0.00	0.00	0.00
135	0.00	0.00	0.00	0.00	0.00	0.00	0.00	0.00	0.00	0.00	0.00	0.00	0.00	0.00	0.00	0.00	0.00	0.00	0.00
140	0.00	0.00	0.00	0.00	0.00	0.00	0.00	0.00	0.00	0.00	0.00	0.00	0.00	0.00	0.00	0.00	0.00	0.00	0.00
145	0.00	0.00	0.00	0.00	0.00	0.00	0.00	0.00	0.00	0.00	0.00	0.00	0.00	0.00	0.00	0.00	0.00	0.00	0.00
150	0.00	0.00	0.00	0.00	0.00	0.00	0.00	0.00	0.00	0.00	0.00	0.00	0.00	0.00	0.00	0.00	0.00	0.00	0.00
155	0.00	0.00	0.00	0.00	0.00	0.00	0.00	0.00	0.00	0.00	0.00	0.00	0.00	0.00	0.00	0.00	0.00	0.00	0.00
160	0.00	0.00	0.00	0.00	0.00	0.00	0.00	0.00	0.00	0.00	0.00	0.00	0.00	0.00	0.00	0.00	0.00	0.00	0.00
165	0.00	0.00	0.00	0.00	0.00	0.00	0.00	0.00	0.00	0.00	0.00	0.00	0.00	0.00	0.00	0.00	0.00	0.00	0.00
170	0.00	0.00	0.00	0.00	0.00	0.00	0.00	0.00	0.00	0.00	0.00	0.00	0.00	0.00	0.00	0.00	0.00	0.00	0.00
175	0.00	0.00	0.00	0.00	0.00	0.00	0.00	0.00	0.00	0.00	0.00	0.00	0.00	0.00	0.00	0.00	0.00	0.00	0.00
180	0.00	0.00	0.00	0.00	0.00	0.00	0.00	0.00	0.00	0.00	0.00	0.00	0.00	0.00	0.00	0.00	0.00	0.00	0.00

C Range: 0 - 360DEG
 C Interval: 5.0DEG
 Test Speed: HIGH
 Temperature:22DEG
 Operators:NEIKO
 Test Date:2017-05-31

γ Range: 0 - 180DEG
 γ Interval: 0.5DEG
 Test System:EVERFINE GO-2000B_V1 SYSTEM V2.0.350
 Humidity:55%
 Test Distance:12.218m [K=1.0000]
 Remarks:

LUMINOUS DISTRIBUTION INTENSITY DATA

Test:U:120V I:0.3333A P:40W PF:0.9954 Lamp Flux:4540x1 lm		
NAME: ASD-ELP02-24D4035-STD	TYPE:LED PANEL	WEIGHT:
SPEC.:	DIM.: 603*1213mm	SERIAL No.:BLD20170531P17
MFR.: ASD Lighting corp	SUR.:0.558*1.17	Shielding Angle:

Table--4

UNIT: cd

C(DEG) γ (DEG)	285	290	295	300	305	310	315	320	325	330	335	340	345	350	355				
0	1560	1560	1560	1560	1560	1560	1560	1560	1560	1560	1560	1560	1560	1560	1560				
5	1542	1542	1543	1543	1543	1543	1544	1544	1545	1546	1547	1548	1549	1550	1551				
10	1524	1523	1523	1522	1522	1521	1521	1521	1521	1522	1522	1523	1525	1527	1529				
15	1502	1502	1501	1499	1496	1494	1492	1490	1489	1488	1488	1488	1489	1492	1495				
20	1449	1450	1451	1453	1455	1456	1456	1453	1449	1445	1443	1442	1442	1444	1448				
25	1390	1390	1389	1389	1389	1390	1393	1396	1398	1394	1389	1386	1384	1385	1389				
30	1330	1328	1326	1323	1321	1319	1319	1320	1323	1328	1327	1320	1316	1315	1318				
35	1244	1244	1246	1248	1251	1246	1242	1239	1239	1241	1246	1246	1238	1235	1237				
40	1151	1151	1150	1150	1151	1154	1158	1155	1150	1148	1150	1157	1152	1146	1147				
45	1059	1057	1054	1052	1051	1050	1051	1053	1058	1051	1049	1052	1057	1048	1047				
50	946	947	948	950	949	946	943	942	943	948	944	942	947	944	939				
55	829	829	829	829	830	832	833	831	828	828	832	828	828	833	825				
60	712	711	710	709	708	708	708	710	712	708	707	712	707	712	706				
65	587	587	587	587	587	586	584	583	584	586	585	583	586	584	583				
70	460	460	460	460	460	460	460	460	458	457	458	459	457	457	459				
75	335	335	335	335	335	335	334	334	333	333	333	331	334	332	332				
80	212	212	212	212	211	212	212	211	211	209	207	207	206	207	206				
85	94.5	94.5	94.7	94.8	94.7	94.7	94.7	94.2	93.3	92.1	90.1	88.1	83.8	82.5	84.5				
90	11.8	11.2	10.6	9.82	8.94	7.92	6.84	5.71	4.58	3.45	2.41	1.55	1.32	1.32	1.32				
95	0.00	0.00	0.00	0.00	0.00	0.00	0.00	0.00	0.00	0.00	0.00	0.00	0.00	0.00	0.00				
100	0.00	0.00	0.00	0.00	0.00	0.00	0.00	0.00	0.00	0.00	0.00	0.00	0.00	0.00	0.00				
105	0.00	0.00	0.00	0.00	0.00	0.00	0.00	0.00	0.00	0.00	0.00	0.00	0.00	0.00	0.00				
110	0.00	0.00	0.00	0.00	0.00	0.00	0.00	0.00	0.00	0.00	0.00	0.00	0.00	0.00	0.00				
115	0.00	0.00	0.00	0.00	0.00	0.00	0.00	0.00	0.00	0.00	0.00	0.00	0.00	0.00	0.00				
120	0.00	0.00	0.00	0.00	0.00	0.00	0.00	0.00	0.00	0.00	0.00	0.00	0.00	0.00	0.00				
125	0.00	0.00	0.00	0.00	0.00	0.00	0.00	0.00	0.00	0.00	0.00	0.00	0.00	0.00	0.00				
130	0.00	0.00	0.00	0.00	0.00	0.00	0.00	0.00	0.00	0.00	0.00	0.00	0.00	0.00	0.00				
135	0.00	0.00	0.00	0.00	0.00	0.00	0.00	0.00	0.00	0.00	0.00	0.00	0.00	0.00	0.00				
140	0.00	0.00	0.00	0.00	0.00	0.00	0.00	0.00	0.00	0.00	0.00	0.00	0.00	0.00	0.00				
145	0.00	0.00	0.00	0.00	0.00	0.00	0.00	0.00	0.00	0.00	0.00	0.00	0.00	0.00	0.00				
150	0.00	0.00	0.00	0.00	0.00	0.00	0.00	0.00	0.00	0.00	0.00	0.00	0.00	0.00	0.00				
155	0.00	0.00	0.00	0.00	0.00	0.00	0.00	0.00	0.00	0.00	0.00	0.00	0.00	0.00	0.00				
160	0.00	0.00	0.00	0.00	0.00	0.00	0.00	0.00	0.00	0.00	0.00	0.00	0.00	0.00	0.00				
165	0.00	0.00	0.00	0.00	0.00	0.00	0.00	0.00	0.00	0.00	0.00	0.00	0.00	0.00	0.00				
170	0.00	0.00	0.00	0.00	0.00	0.00	0.00	0.00	0.00	0.00	0.00	0.00	0.00	0.00	0.00				
175	0.00	0.00	0.00	0.00	0.00	0.00	0.00	0.00	0.00	0.00	0.00	0.00	0.00	0.00	0.00				
180	0.00	0.00	0.00	0.00	0.00	0.00	0.00	0.00	0.00	0.00	0.00	0.00	0.00	0.00	0.00				

C Range: 0 - 360DEG
 C Interval: 5.0DEG
 Test Speed: HIGH
 Temperature:22DEG
 Operators:NEIKO
 Test Date:2017-05-31

γ Range: 0 - 180DEG
 γ Interval: 0.5DEG
 Test System:EVERFINE GO-2000B_V1 SYSTEM V2.0.350
 Humidity:55%
 Test Distance:12.218m [K=1.0000]
 Remarks: