



LED SQUARE OUTDOOR WALL CYLINDER

► **DESIGN & OPTIONS** - LED SQUARE OUTDOOR WALL CYLINDERS has a modern design with effective up/down illumination. This fixture has a tempered glass cover and a durable die-cast aluminum body that is highly resistant to rust. It operates on 120-277V circuits and has smooth dimming capabilities ranging from 100% to 10%. It also includes a color changing option, letting you set it to 3,000K, 4,000K or 5,000K with a simple switch. It comes in a BLACK, BRONZE or WHITE finish.

► **INSTALLATION** - Installation is quick and easy: just attach the wall plate to the outlet box with screws, connect the wires, and fasten the fixture to the wall plate. Screws, wire nuts and all necessary installation accessories are provided. Refer to install instructions for detailed steps.

► **APPLICATION** - This LED SQUARE OUTDOOR WALL CYLINDER is an ideal maintenance free solution for residential and commercial installations. It creates a cozy ambience that is great for indoor and outdoor projects such as decks, front doors, porches, patios, gardens, corridors, balconies, villas, and walkways. The fixture is Wet location rated and suitable for severe weather conditions.

► **ENERGY SAVINGS & EFFICIENCY** - Replacing an incandescent fixture with our LED SQUARE OUTDOOR WALL CYLINDER can save you 8 times as much on your current energy bill. With a lifespan of 50,000 hours, these fixtures are made to last decades under normal operation! This fixture will save you a significant amount of money in its lifetime.

► **CERTIFICATION & WARRANTY** - Buy with confidence: ASD provides a 5-year warranty along with ETL certification to guarantee top quality products and safety!

Catalog number	
Notes	
Type	



Finish: Black Bronze White

PRODUCT LEGEND:

Family	Voltage	Light Direction	Dimmable	Watts	CCT	Finish
ASD-OLCLS	XX	X	X	XX	XX	XX
LED Square Outdoor Wall Cylinder	MV = 120-277 V	2	D = Dimmable	18 = 18 W	CC = 3,000/4,000/5,000 K	BK = Black BZ = Oil Rubbed Bronze WH = White

LED SQUARE OUTDOOR WALL CYLINDER:

Model	Light Direction	Watts	Voltage	Dimmable	Lumens	CCT	Finish	Dimensions (LxWxH)	UPC
ASD-OLCLS-MV-2D18CC-BK	2	18 W	120-277 V	TRIAC	1,500 lm	3,000/4,000/5,000 K	Black	5 13/16" x 4 3/8" x 10 3/16"	810050733076
ASD-OLCLS-MV-2D18CC-BZ	2	18 W	120-277 V	TRIAC	1,500 lm	3,000/4,000/5,000 K	Oil Rubbed Bronze	5 13/16" x 4 3/8" x 10 3/16"	810050733083
ASD-OLCLS-MV-2D18CC-WH	2	18 W	120-277 V	TRIAC	1,500 lm	3,000/4,000/5,000 K	White	5 13/16" x 4 3/8" x 10 3/16"	810050733090

ORDERING INFORMATION:

Model	Pcs in middle box	Middle box Size	Middle box Weight	GTIN 14 for Middle box	Pcs. per Carton	Carton Size	Carton Weight	GTIN 14 for Carton
ASD-OLCLS-MV-2D18CC-BK	2	11" x 7.7" x 11.9"	5.3 lb	10810050733073	6	23" x 11.6" x 12.6"	21.3 lb	20810050733070
ASD-OLCLS-MV-2D18CC-BZ	2	11" x 7.7" x 11.9"	5.3 lb	10810050733080	6	23" x 11.6" x 12.6"	21.3 lb	20810050733087
ASD-OLCLS-MV-2D18CC-WH	2	11" x 7.4" x 11.9"	5.3 lb	10810050733097	6	23" x 11.6" x 12.6"	21.3 lb	20810050733094

For most up-to-date spec sheets please refer to asd-lighting.com



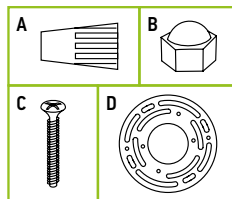
LED SQUARE OUTDOOR WALL CYLINDER

PRODUCT SPECIFICATIONS:

Construction & Materials	
Housing	Aluminum
Lens	Clear glass
Finish Color	Black, Oil Rubbed Bronze, White
Weight	2.6 lb (1.2 kg)
Environmental System	
Work Environment	Suitable for Wet Location
Operating Temperature	-40°F to 113°F / -40°C to 45°C
L-70 Life	> 50,000 hrs
Optical System	
Lumens	1,500 lm
Color Temperature	3,000/4,000/5,000 K
CRI	> 80
Electrical System	
Input Voltage	120-277 V
Max input current	0.6 A
Inrush current (Action time)	0.3 A (0.1 S)
AC input range	min 120 V max 277 V
Off State Power	0 W
Power Consumption	18 W
Power Factor	> 0.9
Dimming range	
10-100%	
Dimming compatible controls	
Brand	Lutron Leviton
	DVCL-153P 6672
	CTCL-153P 6674
Models	TGCL-153P
	MACL-153M
	PD-6WCL
Regular and Voluntary Certifications	
5-year limited warranty	
cETLus certified 4001256	

PACKAGE CONTENTS:

Description	Q-ty
LED Square Outdoor Wall Cylinder	1
Wire Nut (A)	3
Decorative nut (B)	2
Outlet box screw (C)	2
Mounting bracket (D)	2
Box	1
Cut sheet	2



INSTALLATION GUIDE

IMPORTANT SAFETY INFORMATION:

Please read all the instructions below before installation.

- ▶ Make sure that the supply voltage corresponds to the rated product voltage.
- ▶ The product must be installed by a qualified electrician in accordance with the National Electrical Code and corresponding local codes.
- ▶ If the product is damaged, do not use it.

⚠ WARNING

RISK OF PERSONAL INJURY – READ and follow all WARNINGS and installation instructions.

Keep or give to the owner for future reference.

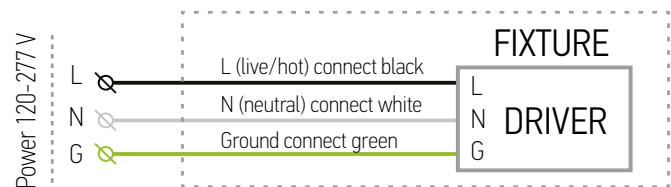
Risk of cuts: Wear gloves to prevent cuts or abrasions when removing from carton, handling, installing, and maintaining this product.

Risk of electric shock: This product must be installed in accordance with the applicable installation code by a person familiar with the construction and operation of the product and the hazards involved.

Risk of Fire: Minimum 194°F supply conductors. Consult a qualified electrician to ensure correct branch circuit conductor.

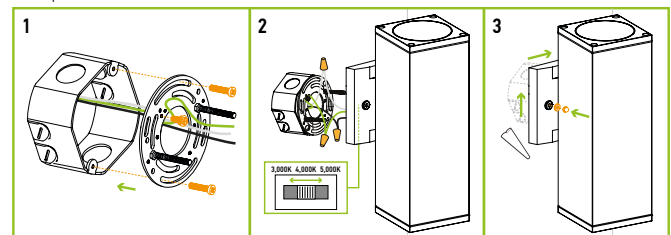
ASD® assumes no responsibility for claims arising out of improper or careless installation or handling of this product.

ELECTRICAL SCHEMATIC DIAGRAM:



INSTALLATION STEPS:

1. Screw the two mounting screws onto the mounting plate. Attach the mounting plate to the outlet box using screws. Before tightening the screws, try to fit the fixture to ensure the angle of the mounting plate is correct.
 2. Choose needed color temperature by adjusting switch position. Connect the wires: Black to Black, White to White, Green to Green. Secure the connection with wire nuts.
 3. Place the fixture base on the wall by aligning the protruding mounting screws through the holes on the wall plate. Put the waterproof gasket on each mounting screw. Tighten the fixture to the wall using two decorative nuts.
- For outdoor locations it is recommended to use silicone (not included) as shown on a picture.



For most up-to-date spec sheets please refer to asd-lighting.com