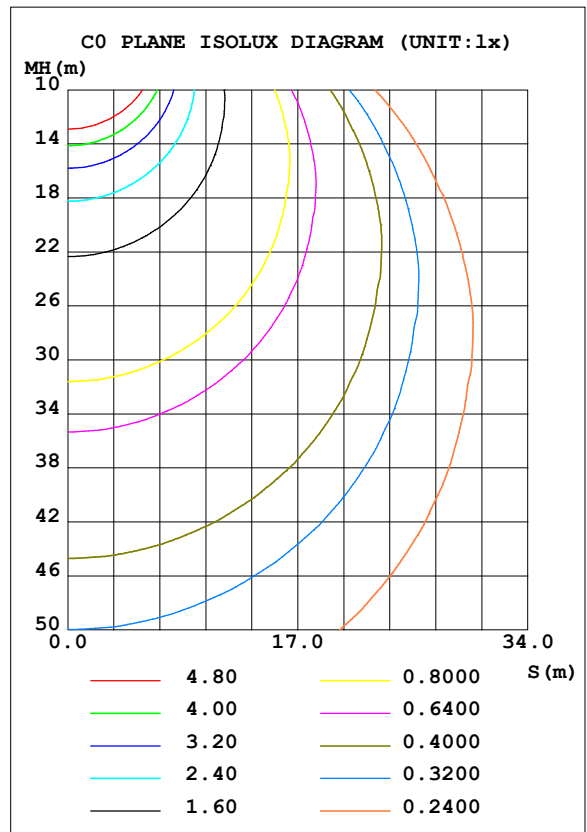
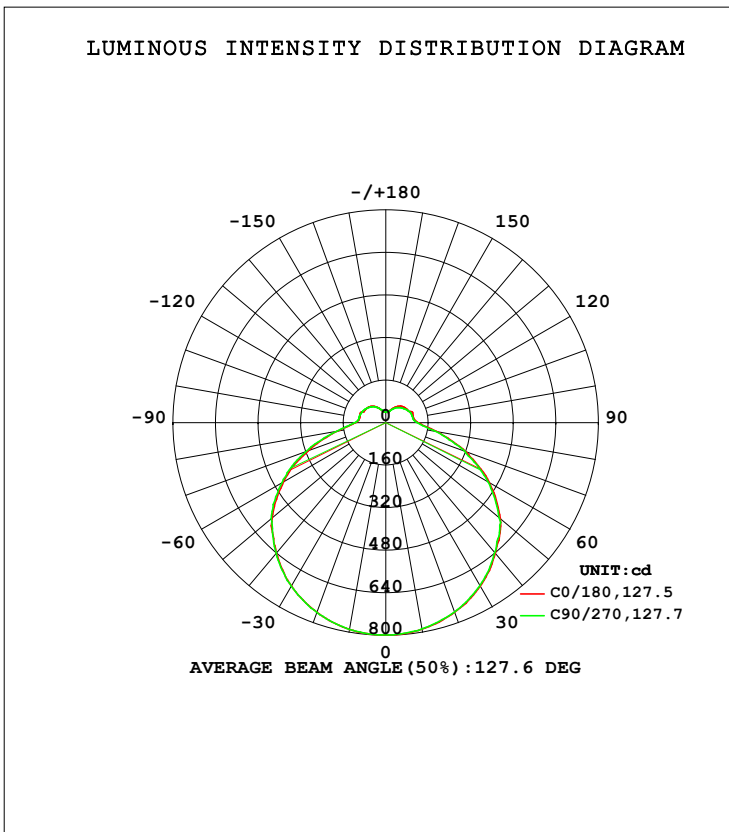


LUMINAIRE PHOTOMETRIC TEST REPORT

Test:U:120.03V I:0.3003A P:35.576W PF:0.9870 Freq:60.00Hz Lamp Flux:3327.76x1 lm		
NAME: ASD Lighting Corp	TYPE:ASD-LFC-GX-20D42S-RGB-SMARTLIGHT:	
SPEC.:ASD-LFC-GX-20D42S-RGB-SMART-4000K	DIM.:	SERIAL No.:
MFR.: ASD Lighting Corp	SUR.: -0.47	Shielding Angle:

DATA OF LAMP		PHOTOMETRIC DATA			
MODEL		Imax (cd)	799.3	S/MH (C0/180)	1.32
NOMINAL POWER (W)	--	LOR (%)	100.0	S/MH (C90/270)	1.33
RATED VOLTAGE (V)	--	TOTAL FLUX (lm)	3327.8	<input type="checkbox"/> UP, DN (C0-180)	8.3, 41.7
NOMINAL FLUX (lm)	3327.76	CIE CLASS	SEMI-D.	<input type="checkbox"/> UP, DN (C180-360)	8.3, 41.8
LAMPS INSIDE	1	<input type="checkbox"/> up (%)	16.5	CIBSE SHR NOM	1.50
TEST VOLTAGE (V)	--	<input type="checkbox"/> down (%)	83.5	CIBSE SHR MAX	1.55



C Range: 0 - 360DEG
 C Interval: 22.5DEG
 Test Speed: HIGH
 Temperature: 25.3DEG
 Operators: chen
 Test Date: 2022-10-04

Range: 0 - 180DEG
 Interval: 1.0DEG
 Test System: EVERFINE GO-3000H_V1 SYSTEM V2.00.411
 Humidity: 65.0%
 Test Distance: 8.650m [K=1.0000]
 Remarks:

ZONAL FLUX DIAGRAM

ZONAL FLUX DIAGRAM:

mm	C0	C45	C90	C135	C180	C225	C270	C315	mm	□ zone	□ total	%lum,lamp
10	788.4	787.9	787.7	787.6	789.2	789.2	789.5	789.5	0- 10	75.74	75.74	2.28,2.28
20	758.4	757.8	757.3	756.4	758.7	758.8	759.4	758.9	10- 20	219.1	294.9	8.86,8.86
30	710.3	709.2	707.4	707.5	709.0	709.3	711.0	712.9	20- 30	339.7	634.5	19.1,19.1
40	641.4	640.0	637.8	636.4	640.7	641.7	641.8	642.7	30- 40	424.1	1059	31.8,31.8
50	562.2	563.6	556.5	554.3	557.9	560.6	562.3	563.2	40- 50	465.2	1524	45.8,45.8
60	449.3	443.5	443.6	442.3	443.8	448.8	449.9	451.7	50- 60	451.7	1975	59.4,59.4
70	320.7	315.5	316.5	311.5	311.0	315.8	321.0	317.9	60- 70	378.9	2354	70.7,70.7
80	193.3	192.2	187.0	185.2	184.0	186.8	187.6	192.4	70- 80	264.8	2619	78.7,78.7
90	122.4	121.5	118.2	116.1	114.3	115.1	117.2	120.5	80- 90	159.1	2778	83.5,83.5
100	106.5	104.1	103.8	100.8	100.8	100.1	103.8	103.9	90-100	118.0	2896	87,87
110	108.3	100.1	102.3	96.63	102.5	94.44	100.2	98.06	100-110	107.3	3004	90.3,90.3
120	95.91	92.20	94.46	90.95	92.03	91.19	96.05	92.14	110-120	96.27	3100	93.1,93.1
130	91.04	82.88	84.39	83.13	88.82	84.81	88.07	84.65	120-130	80.06	3180	95.6,95.6
140	81.54	69.28	74.80	71.27	81.20	72.50	79.00	70.53	130-140	62.30	3242	97.4,97.4
150	65.88	55.75	61.90	58.02	67.61	58.71	66.03	57.71	140-150	43.04	3285	98.7,98.7
160	49.96	46.78	48.56	48.16	51.52	49.74	53.07	49.06	150-160	25.81	3311	99.5,99.5
170	40.31	40.93	41.55	40.40	41.00	42.41	43.27	42.05	160-170	12.90	3324	99.9,99.9
180	41.57	38.81	41.35	40.45	41.56	38.82	41.33	40.47	170-180	3.861	3328	100,100
DEG	LUMINOUS INTENSITY:cd									UNIT:lm		

Conical surface Flux(90deg): 1288.5 lm

%lum = 38.7%

%lamp = 38.7%

Conical surface Flux(120deg): 1975.4 lm

%lum = 59.4%

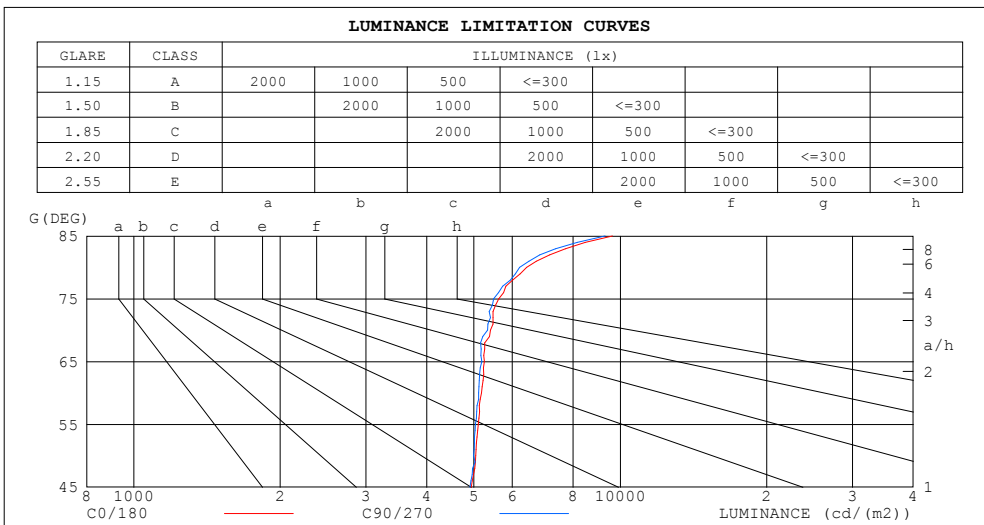
%lamp = 59.4%

C Range: 0 - 360DEG
 C Interval: 22.5DEG
 Test Speed: HIGH
 Temperature:25.3DEG
 Operators:chen
 Test Date:2022-10-04

□ Range: 0 - 180DEG
 □ Interval: 1.0DEG
 Test System:EVERFINE GO-3000H_V1 SYSTEM V2.00.411
 Humidity:65.0%
 Test Distance:8.650m [K=1.0000]
 Remarks:

LUMINANCE LIMITATION CURVES

Test:U:120.03V I:0.3003A P:35.576W PF:0.9870 Freq:60.00Hz Lamp Flux:3327.76x1 lm		
NAME: ASD Lighting Corp	TYPE:ASD-LFC-GX-20D42S-RGB-SMARTIGHT:	
SPEC.:ASD-LFC-GX-20D42S-RGB-SMART-4000K	DIM.:	SERIAL No.:
MFR.: ASD Lighting Corp	SUR.: -0.47	Shielding Angle:



LUMINANCE cd/(m2)		
G (DEG)	C0/180	C90/270
85	9636	9304
80	6419	6212
75	5624	5493
70	5408	5337
65	5252	5192
60	5182	5117
55	5105	5036
50	5044	4993
45	4939	4912

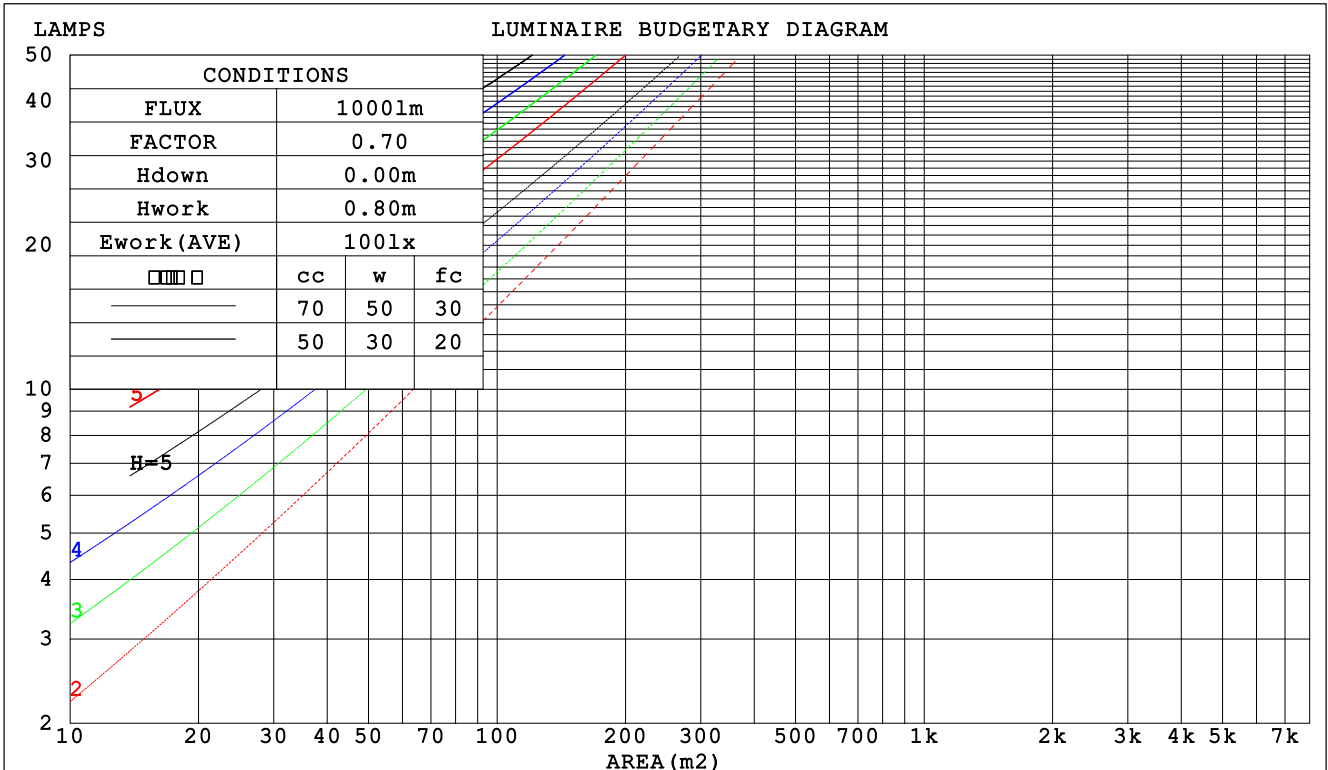
C Range: 0 - 360DEG
 C Interval: 22.5DEG
 Test Speed: HIGH
 Temperature:25.3DEG
 Operators:chen
 Test Date:2022-10-04

Range: 0 - 180DEG
 Interval: 1.0DEG
 Test System:EVERFINE GO-3000H_V1 SYSTEM V2.00.411
 Humidity:65.0%
 Test Distance:8.650m [K=1.0000]
 Remarks:

CU AND LUMINAIRE BUDGETARY ESTIMATE DIAGRAM

Test:U:120.03V I:0.3003A P:35.576W PF:0.9870 Freq:60.00Hz Lamp Flux:3327.76x1 lm		
NAME: ASD Lighting Corp	TYPE:ASD-LFC-GX-20D42S-RGB-SMARTLIGHT:	
SPEC.:ASD-LFC-GX-20D42S-RGB-SMART-4000K	DIM.:	SERIAL No.:
MFR.: ASD Lighting Corp	SUR.: -0.47	Shielding Angle:

□cc	80%			70%			50%			30%			10%			0
□w	50%	30%	10%	50%	30%	10%	50%	30%	10%	50%	30%	10%	50%	30%	10%	0
□fc	20%			20%			20%			20%			20%			0
RCR	RCR:Room Cavity Ratio						Coefficients of Utilization(CU)									
0.0	1.15	1.15	1.15	1.11	1.11	1.11	1.02	1.02	1.02	.94	.94	.94	.87	.87	.87	.83
1.0	.98	.93	.89	.94	.90	.86	.87	.83	.80	.80	.77	.74	.74	.71	.69	.66
2.0	.84	.77	.71	.81	.74	.69	.75	.69	.64	.69	.64	.60	.64	.60	.57	.54
3.0	.73	.65	.58	.70	.63	.56	.65	.59	.53	.60	.55	.50	.55	.51	.47	.44
4.0	.64	.55	.48	.62	.54	.47	.57	.50	.45	.53	.47	.42	.49	.44	.40	.37
5.0	.57	.48	.41	.55	.47	.40	.51	.44	.38	.47	.41	.36	.44	.39	.34	.32
6.0	.51	.42	.36	.49	.41	.35	.46	.39	.33	.43	.36	.32	.40	.34	.30	.28
7.0	.46	.37	.31	.45	.36	.30	.42	.34	.29	.39	.32	.28	.36	.31	.26	.24
8.0	.42	.33	.28	.41	.33	.27	.38	.31	.26	.35	.29	.25	.33	.28	.24	.21
9.0	.38	.30	.25	.37	.29	.24	.35	.28	.23	.33	.26	.22	.30	.25	.21	.19
10.0	.35	.27	.22	.34	.27	.22	.32	.25	.21	.30	.24	.20	.28	.23	.19	.17



C Range: 0 - 360DEG
 C Interval: 22.5DEG
 Test Speed: HIGH
 Temperature:25.3DEG
 Operators:chen
 Test Date:2022-10-04

□ Range: 0 - 180DEG
 □ Interval: 1.0DEG
 Test System:EVERFINE GO-3000H_V1 SYSTEM V2.00.411
 Humidity:65.0%
 Test Distance:8.650m [K=1.0000]
 Remarks:

WEC AND CCEC

Test:U:120.03V I:0.3003A P:35.576W PF:0.9870 Freq:60.00Hz Lamp Flux:3327.76x1 lm		
NAME: ASD Lighting Corp	TYPE:ASD-LFC-GX-20D42S-RGB-SMARTLIGHT:	
SPEC.:ASD-LFC-GX-20D42S-RGB-SMART-4000K	DIM.:	SERIAL No.:
MFR.: ASD Lighting Corp	SUR.: -0.47	Shielding Angle:

<input type="checkbox"/> cc	80%			70%			50%			30%			10%			0
<input type="checkbox"/> w	50%	30%	10%	50%	30%	10%	50%	30%	10%	50%	30%	10%	50%	30%	10%	0
<input type="checkbox"/> fc	20%			20%			20%			20%			20%			0
RCR	RCR:Room Cavity Ratio						Wall Exitance Coefficients (WEC)									
0.0																
1.0	.350	.199	.063	.337	.192	.061	.315	.180	.058	.294	.169	.054	.274	.159	.051	
2.0	.313	.172	.053	.302	.166	.051	.282	.157	.049	.263	.147	.046	.245	.139	.044	
3.0	.283	.151	.045	.273	.146	.044	.255	.138	.042	.237	.130	.040	.221	.123	.038	
4.0	.258	.134	.039	.249	.130	.038	.232	.123	.037	.216	.116	.035	.202	.110	.033	
5.0	.236	.120	.035	.228	.117	.034	.212	.111	.033	.198	.105	.031	.185	.099	.030	
6.0	.217	.109	.031	.210	.106	.031	.196	.100	.029	.183	.095	.028	.171	.090	.027	
7.0	.201	.099	.028	.194	.097	.028	.182	.092	.026	.170	.087	.025	.159	.082	.024	
8.0	.187	.091	.026	.181	.089	.025	.169	.085	.024	.158	.080	.023	.148	.076	.022	
9.0	.175	.085	.024	.169	.082	.023	.158	.078	.022	.148	.074	.021	.139	.070	.020	
10.0	.164	.079	.022	.159	.077	.021	.149	.073	.021	.139	.069	.020	.130	.066	.019	

<input type="checkbox"/> cc	80%			70%			50%			30%			10%			0
<input type="checkbox"/> w	50%	30%	10%	50%	30%	10%	50%	30%	10%	50%	30%	10%	50%	30%	10%	0
<input type="checkbox"/> fc	20%			20%			20%			20%			20%			0
RCR	RCR:Room Cavity Ratio						Ceiling Cavity Exitance Coefficients (CCEC)									
0.0	.316	.316	.316	.270	.270	.270	.185	.185	.185	.106	.106	.106	.034	.034	.034	
1.0	.310	.283	.258	.265	.243	.222	.181	.167	.154	.104	.097	.089	.033	.031	.029	
2.0	.303	.260	.223	.259	.223	.193	.178	.155	.135	.102	.090	.079	.033	.029	.026	
3.0	.295	.243	.201	.253	.209	.174	.174	.145	.122	.100	.085	.072	.032	.028	.024	
4.0	.288	.230	.186	.247	.199	.162	.170	.139	.114	.098	.081	.067	.032	.026	.022	
5.0	.280	.220	.176	.241	.191	.153	.166	.133	.108	.096	.078	.064	.031	.026	.021	
6.0	.273	.212	.168	.235	.184	.147	.162	.129	.104	.094	.076	.062	.030	.025	.020	
7.0	.266	.206	.163	.229	.178	.142	.158	.125	.101	.092	.074	.060	.030	.024	.020	
8.0	.260	.200	.159	.224	.174	.139	.155	.122	.098	.090	.072	.059	.029	.024	.019	
9.0	.254	.195	.156	.219	.169	.136	.151	.119	.096	.088	.070	.058	.029	.023	.019	
10.0	.248	.191	.153	.214	.166	.134	.148	.117	.095	.087	.069	.057	.028	.023	.019	

C Range: 0 - 360DEG
 C Interval: 22.5DEG
 Test Speed: HIGH
 Temperature:25.3DEG
 Operators:chen
 Test Date:2022-10-04

Range: 0 - 180DEG
 Interval: 1.0DEG
 Test System:EVERFINE GO-3000H_V1 SYSTEM V2.00.411
 Humidity:65.0%
 Test Distance:8.650m [K=1.0000]
 Remarks:

UGR(Unified Glare Rating) Table

Test:U:120.03V I:0.3003A P:35.576W PF:0.9870 Freq:60.00Hz Lamp Flux:3327.76x1 lm		
NAME: ASD Lighting Corp	TYPE:ASD-LFC-GX-20D42S-RGB-SMARTIGHT:	
SPEC.:ASD-LFC-GX-20D42S-RGB-SMART-4000K	DIM.:	SERIAL No.:
MFR.: ASD Lighting Corp	SUR.: -0.47	Shielding Angle:

ceiling/cavity	0.7	0.7	0.5	0.5	0.3	0.7	0.7	0.5	0.5	0.3
walls	0.5	0.3	0.5	0.3	0.3	0.5	0.3	0.5	0.3	0.3
working plane	0.2	0.2	0.2	0.2	0.2	0.2	0.2	0.2	0.2	0.2
Room dimensions	Viewed crosswise					Viewed endwise				
x = 2H y = 2H	17.7	19.0	18.2	19.5	20.0	17.6	19.0	18.1	19.5	20.0
3H	19.6	20.8	20.1	21.3	21.9	19.5	20.7	20.0	21.3	21.8
4H	20.4	21.6	21.0	22.1	22.7	20.4	21.5	20.9	22.1	22.7
6H	21.3	22.4	21.8	22.9	23.6	21.2	22.3	21.7	22.9	23.5
8H	21.7	22.8	22.3	23.3	24.0	21.6	22.7	22.2	23.2	23.9
12H	22.2	23.2	22.8	23.8	24.4	22.0	23.1	22.6	23.6	24.3
4H 2H	18.3	19.5	18.9	20.0	20.6	18.3	19.5	18.8	20.0	20.6
3H	20.4	21.4	21.0	22.0	22.6	20.3	21.4	20.9	21.9	22.6
4H	21.4	22.4	22.0	23.0	23.6	21.4	22.3	22.0	22.9	23.6
6H	22.4	23.3	23.1	23.9	24.6	22.4	23.2	23.0	23.8	24.5
8H	23.0	23.7	23.6	24.4	25.1	22.8	23.6	23.5	24.3	25.0
12H	23.5	24.3	24.2	24.9	25.6	23.4	24.1	24.1	24.8	25.5
8H 4H	21.8	22.6	22.4	23.2	23.9	21.7	22.5	22.4	23.2	23.9
6H	23.0	23.7	23.7	24.4	25.1	23.0	23.6	23.6	24.3	25.1
8H	23.7	24.3	24.4	25.0	25.8	23.6	24.2	24.3	24.9	25.7
12H	24.5	25.0	25.2	25.7	26.5	24.4	24.9	25.1	25.6	26.4
12H 4H	21.8	22.6	22.5	23.2	24.0	21.8	22.5	22.4	23.2	23.9
6H	23.2	23.8	23.9	24.4	25.2	23.1	23.7	23.8	24.4	25.2
8H	23.9	24.5	24.7	25.2	26.0	23.8	24.4	24.6	25.1	25.9
Variations with the observer position at spacings:										
S = 1.0H	+ 0.1 / - 0.1					+ 0.1 / - 0.1				
1.5H	+ 0.2 / - 0.3					+ 0.2 / - 0.3				
2.0H	+ 0.2 / - 0.3					+ 0.2 / - 0.3				

CIE Pub.117, 3328 lm Total Lamp Luminous Flux Corrected (8log(F/F0) = 4.2)
 Area: 0.173406 m2

C Range: 0 - 360DEG
 C Interval: 22.5DEG
 Test Speed: HIGH
 Temperature:25.3DEG
 Operators:chen
 Test Date:2022-10-04

Range: 0 - 180DEG
 Interval: 1.0DEG
 Test System:EVERFINE GO-3000H_V1 SYSTEM V2.00.411
 Humidity:65.0%
 Test Distance:8.650m [K=1.0000]
 Remarks:

UTILIZATION FACTORS TABLE

Test:U:120.03V I:0.3003A P:35.576W PF:0.9870 Freq:60.00Hz Lamp Flux:3327.76x1 lm		
NAME: ASD Lighting Corp	TYPE:ASD-LFC-GX-20D42S-RGB-SMART:	
SPEC.:ASD-LFC-GX-20D42S-RGB-SMART-4000K	DIM.:	SERIAL No.:
MFR.: ASD Lighting Corp	SUR.: -0.47	Shielding Angle:

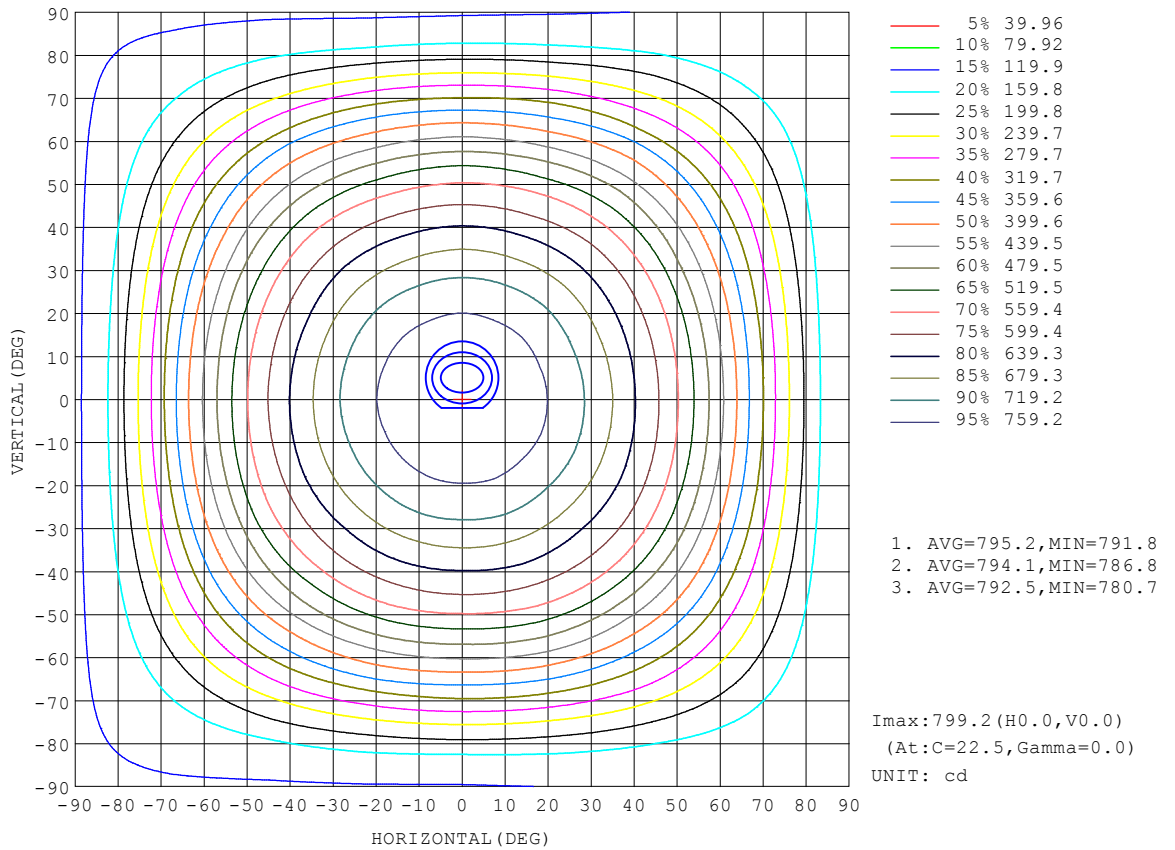
REFLECTANCE										
Ceiling	0.8	0.8	0.8	0.7	0.7	0.7	0.5	0.5	0.5	0
Walls	0.7	0.5	0.3	0.7	0.5	0.3	0.7	0.5	0.3	0
Working plane	0.2	0.2	0.2	0.2	0.2	0.2	0.2	0.2	0.2	0
ROOM INDEX	UTILIZATION FACTORS (PERCENT) $k(RI) \times RCR = 5$									
k = 0.60	50	37	30	48	37	30	46	36	30	23
0.80	59	47	39	58	46	38	55	44	37	30
1.00	67	55	47	65	54	46	62	54	45	36
1.25	74	62	54	72	61	53	68	58	52	42
1.50	79	68	60	77	66	59	72	63	57	46
2.00	87	76	69	84	74	67	78	70	64	53
2.50	91	82	74	88	79	73	82	75	69	57
3.00	95	86	79	91	84	77	85	78	73	61
4.00	99	92	86	95	89	84	88	83	79	65
5.00	102	96	91	98	93	88	91	86	83	68
ROOM INDEX	UF(total)									Direct
According to DIN EN 13032-2 2004			Suspended				SHRNOM = 1.25			

C Range: 0 - 360DEG
 C Interval: 22.5DEG
 Test Speed: HIGH
 Temperature:25.3DEG
 Operators:chen
 Test Date:2022-10-04

Range: 0 - 180DEG
 Interval: 1.0DEG
 Test System:EVERFINE GO-3000H_V1 SYSTEM V2.00.411
 Humidity:65.0%
 Test Distance:8.650m [K=1.0000]
 Remarks:

ISOCANDELA DIAGRAM

Test:U:120.03V I:0.3003A P:35.576W PF:0.9870 Freq:60.00Hz Lamp Flux:3327.76x1 lm		
NAME: ASD Lighting Corp	TYPE:ASD-LFC-GX-20D42S-RGB-SMARTLIGHT:	
SPEC.:ASD-LFC-GX-20D42S-RGB-SMART-4000K	DIM.:	SERIAL No.:
MFR.: ASD Lighting Corp	SUR.: -0.47	Shielding Angle:

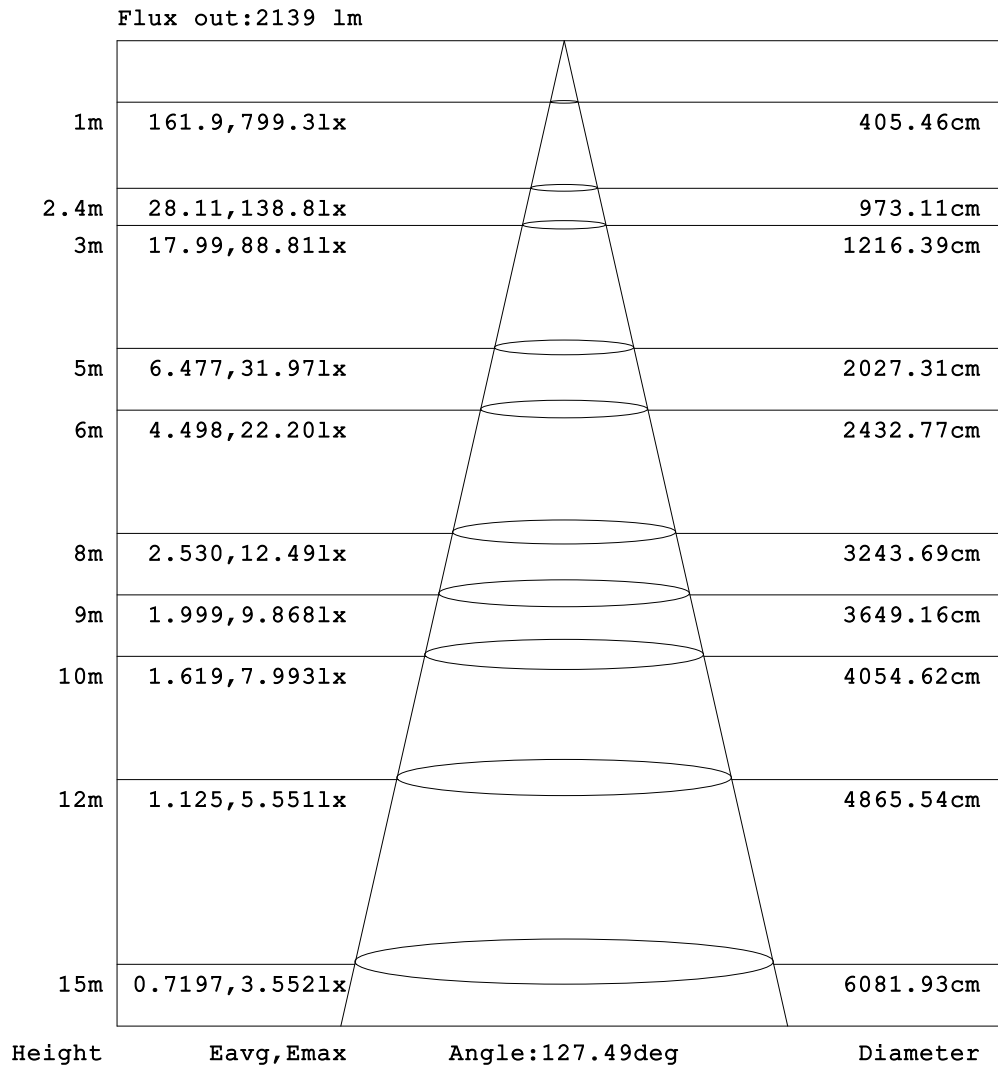


C Range: 0 - 360DEG
 C Interval: 22.5DEG
 Test Speed: HIGH
 Temperature:25.3DEG
 Operators:chen
 Test Date:2022-10-04

Range: 0 - 180DEG
 Interval: 1.0DEG
 Test System:EVERFINE GO-3000H_V1 SYSTEM V2.00.411
 Humidity:65.0%
 Test Distance:8.650m [K=1.0000]
 Remarks:

AAI Figure

Test:U:120.03V I:0.3003A P:35.576W PF:0.9870 Freq:60.00Hz Lamp Flux:3327.76x1 lm		
NAME: ASD Lighting Corp	TYPE:ASD-LFC-GX-20D42S-RGB-SMARTLIGHT:	
SPEC.:ASD-LFC-GX-20D42S-RGB-SMART-4000K	DIM.:	SERIAL No.:
MFR.: ASD Lighting Corp	SUR.: -0.47	Shielding Angle:



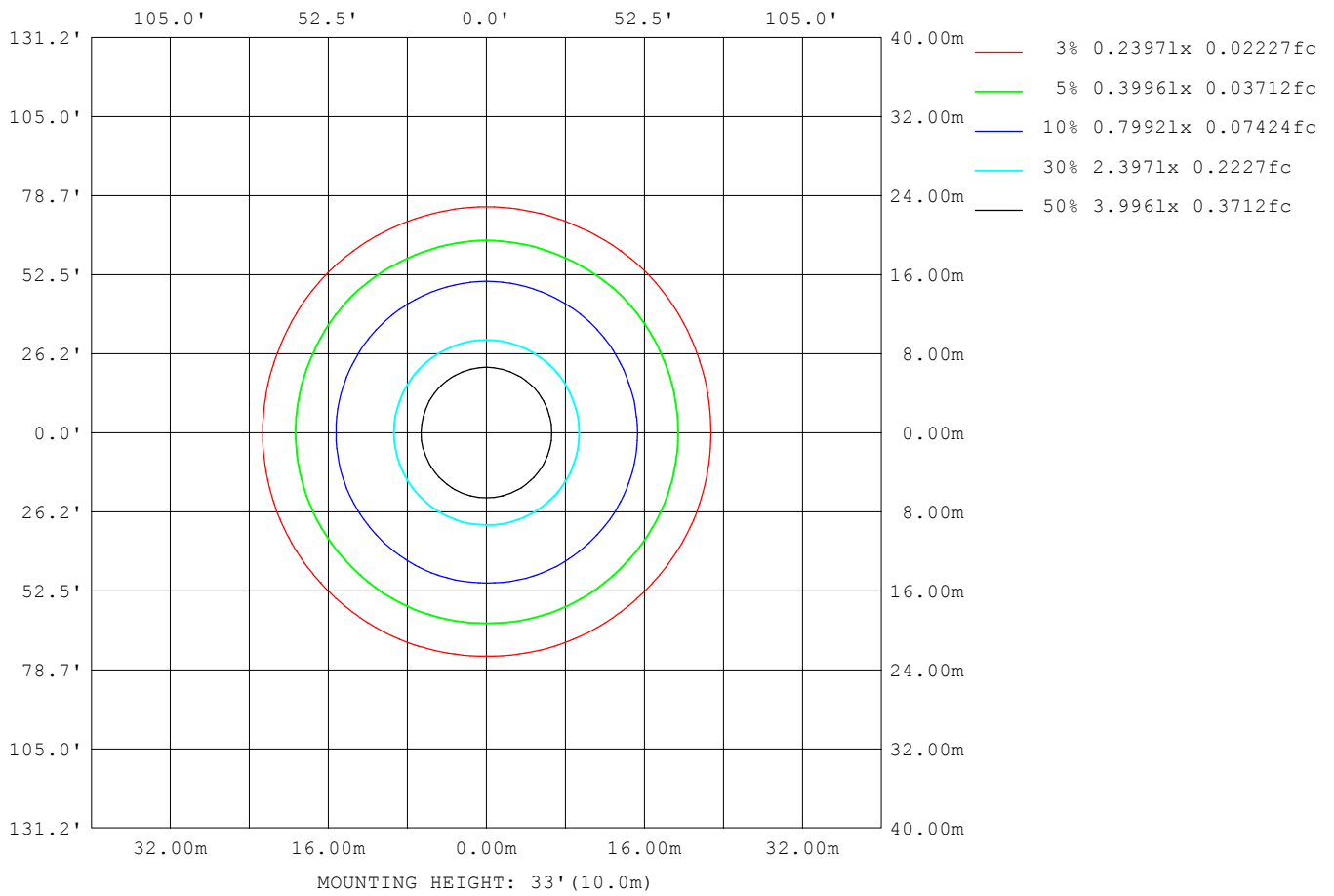
Note:The Curves indicate the illuminated area and the average illumination when the luminaire is at different distance.

C Range: 0 - 360DEG
 C Interval: 22.5DEG
 Test Speed: HIGH
 Temperature:25.3DEG
 Operators:chen
 Test Date:2022-10-04

Range: 0 - 180DEG
 Interval: 1.0DEG
 Test System:EVERFINE GO-3000H_V1 SYSTEM V2.00.411
 Humidity:65.0%
 Test Distance:8.650m [K=1.0000]
 Remarks:

ISOLUX DIAGRAM

Test:U:120.03V I:0.3003A P:35.576W PF:0.9870 Freq:60.00Hz Lamp Flux:3327.76x1 lm		
NAME: ASD Lighting Corp	TYPE:ASD-LFC-GX-20D42S-RGB-SMARTIGHT:	
SPEC.:ASD-LFC-GX-20D42S-RGB-SMART-4000K	DIM.:	SERIAL No.:
MFR.: ASD Lighting Corp	SUR.: -0.47	Shielding Angle:



C Range: 0 - 360DEG
 C Interval: 22.5DEG
 Test Speed: HIGH
 Temperature:25.3DEG
 Operators:chen
 Test Date:2022-10-04

Range: 0 - 180DEG
 Interval: 1.0DEG
 Test System:EVERFINE GO-3000H_V1 SYSTEM V2.00.411
 Humidity:65.0%
 Test Distance:8.650m [K=1.0000]
 Remarks:

LED Avg.L Report

Test:U:120.03V I:0.3003A P:35.576W PF:0.9870 Freq:60.00Hz Lamp Flux:3327.76x1 lm		
NAME: ASD Lighting Corp	TYPE:ASD-LFC-GX-20D42S-RGB-SMARTIGHT:	
SPEC.:ASD-LFC-GX-20D42S-RGB-SMART-4000K	DIM.:	SERIAL No.:
MFR.: ASD Lighting Corp	SUR.: -0.47	Shielding Angle:

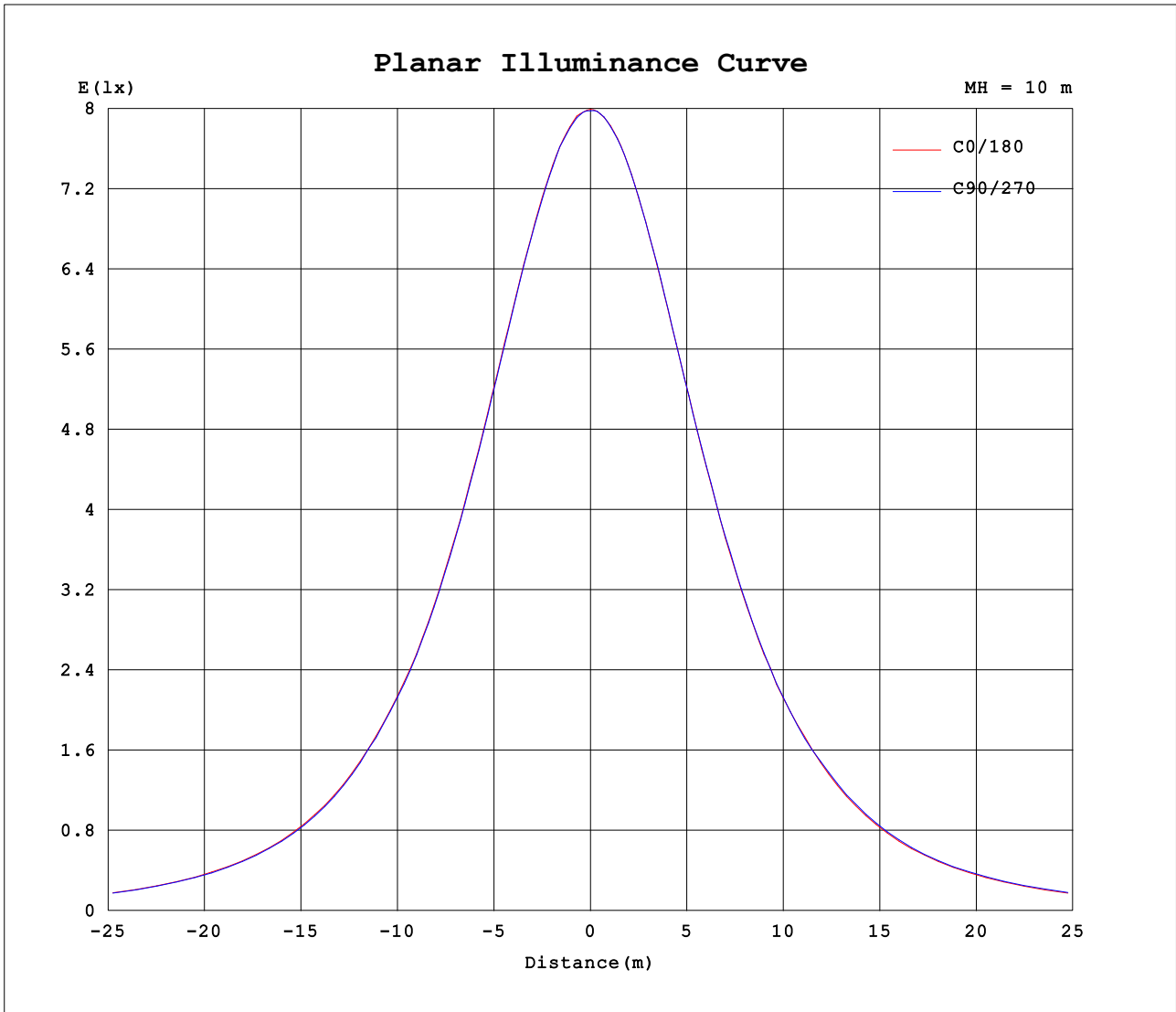
AvgL	cd/m2
L_0~180 (65) av	5227
L_0~180 (75) av	5535
L_0~180 (85) av	9358
L_90~270 (65) av	5256
L_90~270 (75) av	5547
L_90~270 (85) av	9358
L_45 (65) av	5244
L_45 (75) av	5575
L_45 (85) av	9393

Standard: GB/T 29293-2012

C Range: 0 - 360DEG
 C Interval: 22.5DEG
 Test Speed: HIGH
 Temperature:25.3DEG
 Operators:chen
 Test Date:2022-10-04

Range: 0 - 180DEG
 Interval: 1.0DEG
 Test System:EVERFINE GO-3000H_V1 SYSTEM V2.00.411
 Humidity:65.0%
 Test Distance:8.650m [K=1.0000]
 Remarks:

Planar Illuminance Curve



C Range: 0 - 360DEG
 C Interval: 22.5DEG
 Test Speed: HIGH
 Temperature:25.3DEG
 Operators:chen
 Test Date:2022-10-04

Range: 0 - 180DEG
 Interval: 1.0DEG
 Test System:EVERFINE GO-3000H_V1 SYSTEM V2.00.411
 Humidity:65.0%
 Test Distance:8.650m [K=1.0000]
 Remarks:

LUMINOUS DISTRIBUTION INTENSITY DATA

Test:U:120.03V I:0.3003A P:35.576W PF:0.9870 Freq:60.00Hz Lamp Flux:3327.76x1 lm		
NAME: ASD Lighting Corp	TYPE:ASD-LFC-GX-20D42S-RGB-SMARTIGHT:	
SPEC.:ASD-LFC-GX-20D42S-RGB-SMART-4000K	DIM.:	SERIAL No.:
MFR.: ASD Lighting Corp	SUR.: -0.47	Shielding Angle:

Table--1

UNIT: cd

C (DEG) □ (DEG)	0	22.5	45	67.5	90	112.5	135	157.5	180	202.5	225	247.5	270	292.5	315	337.5			
0	799	799	799	799	798	798	798	797	799	799	799	799	798	798	798	797			
5	797	796	796	796	795	795	795	795	796	796	797	797	796	796	796	795			
10	788	789	788	788	788	788	788	788	789	789	789	789	789	789	789	787			
15	776	776	776	775	774	775	774	774	777	775	777	777	777	776	776	775			
20	758	759	758	759	757	758	756	757	759	758	759	758	759	758	759	757			
25	737	737	736	738	735	736	734	735	736	735	737	735	737	737	738	737			
30	710	712	709	710	707	708	708	707	709	708	709	708	711	709	713	709			
35	680	679	677	677	676	676	675	675	676	676	677	675	679	677	679	677			
40	641	644	640	642	638	638	636	641	641	638	642	639	642	640	643	641			
45	606	613	605	605	602	600	599	598	601	599	600	600	602	600	604	606			
50	562	564	564	563	556	559	554	559	558	558	561	558	562	563	563	562			
55	508	509	505	506	501	503	500	502	502	501	504	507	509	507	509	505			
60	449	450	444	449	444	443	442	444	444	442	449	446	450	449	452	449			
65	385	386	380	383	380	379	382	381	381	381	384	386	390	389	391	387			
70	321	317	316	317	317	309	311	309	311	312	316	319	321	326	318	319			
75	252	255	253	248	247	246	245	246	244	248	249	248	251	252	254	255			
80	193	196	192	192	187	187	185	185	184	187	187	186	188	190	192	193			
85	146	147	144	144	141	141	138	138	137	137	140	139	142	143	146	145			
90	122	123	122	120	118	118	116	116	114	114	115	115	117	118	120	120			
95	111	111	109	109	107	106	105	105	104	103	104	104	105	106	108	108			
100	107	106	104	104	104	102	101	101	101	99.3	100	102	104	104	104	104			
105	106	105	102	102	103	100	98.2	100	101	98.1	96.8	99.4	102	102	100	102			
110	108	106	100	101	102	98.9	96.6	102	103	100	94.4	96.0	100	100	98.1	104			
115	100	101	96.0	97.8	98.7	93.4	93.9	97.5	95.8	96.5	93.6	93.5	98.0	98.0	95.2	101			
120	95.9	94.3	92.2	93.4	94.5	89.4	91.0	92.1	92.0	91.3	91.2	90.9	96.0	94.0	92.1	94.6			
125	93.9	89.6	88.3	87.4	89.7	86.1	87.3	88.7	90.8	88.0	88.5	88.6	92.2	89.6	89.7	89.8			
130	91.0	85.6	82.9	82.2	84.4	82.3	83.1	85.8	88.8	85.2	84.8	84.8	88.1	85.3	84.7	85.8			
135	86.9	80.8	75.8	77.3	80.1	76.7	77.5	82.0	85.5	81.5	79.2	80.5	83.5	81.7	77.6	81.5			
140	81.5	76.0	69.3	68.5	74.8	68.2	71.3	77.5	81.2	77.6	72.5	72.2	79.0	75.0	70.5	76.5			
145	74.8	70.3	63.0	63.9	69.1	63.9	65.1	72.0	75.2	71.8	65.7	65.5	73.1	67.2	64.8	70.5			
150	65.9	62.2	55.8	57.6	61.9	57.4	58.0	64.5	67.6	64.8	58.7	60.1	66.0	61.3	57.7	62.4			
155	57.5	55.0	50.7	52.6	54.9	52.1	52.9	57.1	60.1	58.4	53.9	55.6	59.6	55.9	53.6	55.8			
160	50.0	49.0	46.8	47.6	48.6	47.2	48.2	50.9	51.5	51.8	49.7	51.3	53.1	50.4	49.1	50.3			
165	43.9	44.3	43.1	42.9	43.6	43.8	43.8	44.9	45.4	45.6	46.4	46.6	47.3	45.2	44.7	45.7			
170	40.3	41.0	40.9	40.1	41.5	41.1	40.4	40.5	41.0	40.5	42.4	43.6	43.3	41.7	42.0	42.0			
175	40.6	39.9	38.2	38.3	40.5	40.3	39.1	39.7	40.9	38.7	38.8	41.0	42.1	40.9	40.5	41.0			
180	41.6	39.6	38.8	39.2	41.4	40.2	40.5	40.6	41.6	39.6	38.8	39.2	41.3	40.2	40.5	40.6			

C Range: 0 - 360DEG
 C Interval: 22.5DEG
 Test Speed: HIGH
 Temperature:25.3DEG
 Operators:chen
 Test Date:2022-10-04

□ Range: 0 - 180DEG
 □ Interval: 1.0DEG
 Test System:EVERFINE GO-3000H_V1 SYSTEM V2.00.411
 Humidity:65.0%
 Test Distance:8.650m [K=1.0000]
 Remarks: