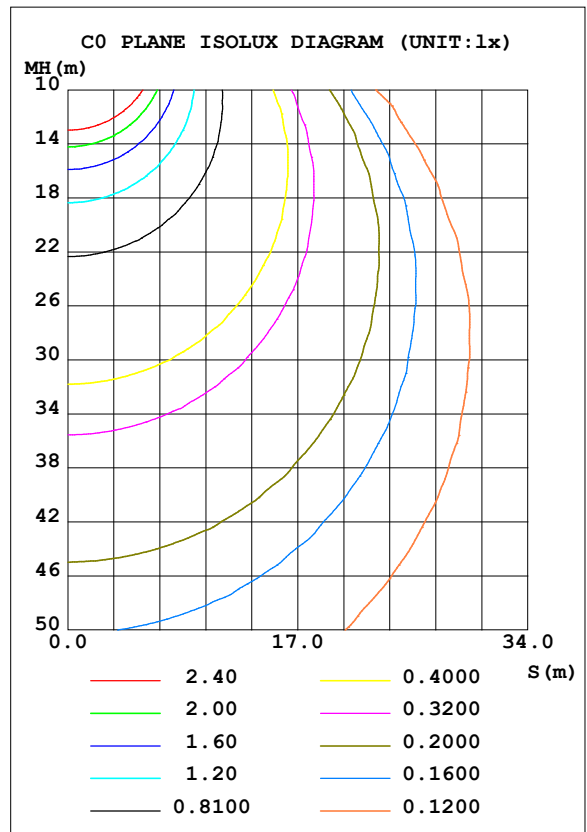
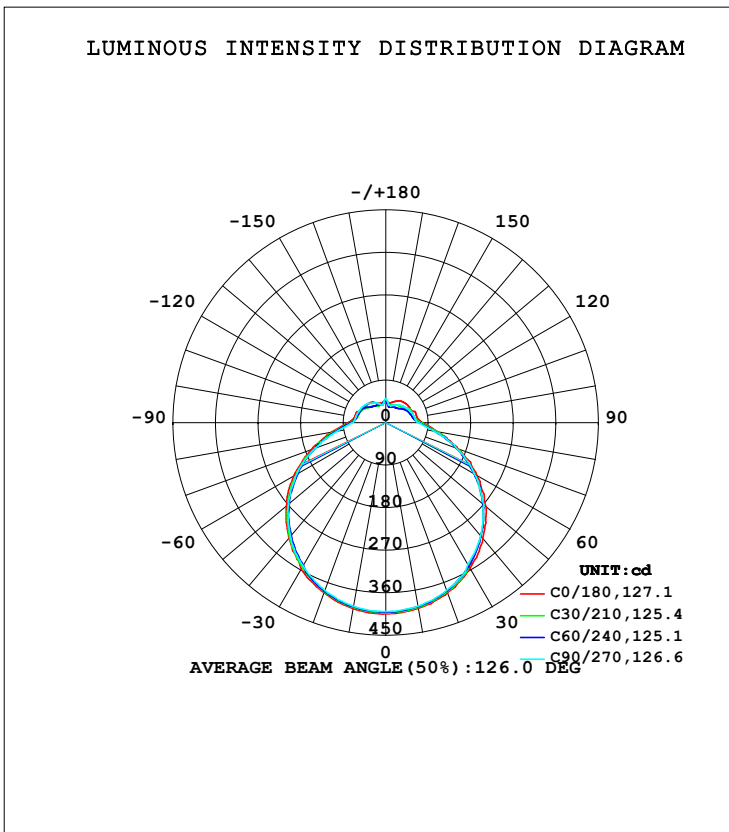


LUMINAIRE PHOTOMETRIC TEST REPORT

Test:U:120.06V I:0.2593A P:28.404W PF:0.9114 Freq:60.00Hz Lamp Flux:1758.01x1 lm		
NAME: ASD lighting Corp	TYPE:	WEIGHT:
SPEC.:ASD-LFC-SN-16D28-AC-2700K	DIM.:	SERIAL No.:
MFR.: ASD lighting Corp	SUR.:0.43*0.39	Shielding Angle:

DATA OF LAMP		PHOTOMETRIC DATA Eff: 61.89 lm/W			
MODEL	ASD-LFC-SN-16D28-AC	I _{max} (cd)	405.1	S/MH (C0/180)	1.31
NOMINAL POWER (W)	--	LOR (%)	100.0	S/MH (C90/270)	1.31
RATED VOLTAGE (V)	--	TOTAL FLUX (lm)	1758.0	<input type="checkbox"/> UP, DN (C0-180)	10.0, 39.9
NOMINAL FLUX (lm)	1758.01	CIE CLASS	SEMI-D.	<input type="checkbox"/> UP, DN (C180-360)	10.2, 39.9
LAMPS INSIDE	1	<input type="checkbox"/> up (%)	20.2	CIBSE SHR NOM	1.50
TEST VOLTAGE (V)	--	<input type="checkbox"/> down (%)	79.8	CIBSE SHR MAX	1.50



C Range: 0 - 360DEG
 C Interval: 30.0DEG
 Test Speed: HIGH
 Temperature: 25.3DEG
 Operators: admin
 Test Date: 2022-03-16

Range: 0 - 180DEG
 Interval: 1.0DEG
 Test System: EVERFINE GO-2000B_V1 SYSTEM V2.00.411
 Humidity: 65.0%
 Test Distance: 8.780m [K=1.0000]
 Remarks:

ZONAL FLUX DIAGRAM

ZONAL FLUX DIAGRAM:

mm	C0	C45	C90	C135	C180	C225	C270	C315	mm	□ zone	□ total	%lum,lamp
10	398.7	395.9	394.0	392.5	399.6	396.3	394.6	393.1	0- 10	37.99	37.99	2.16,2.16
20	382.5	380.0	377.9	377.0	383.0	380.5	377.4	377.2	10- 20	109.8	147.7	8.4,8.4
30	356.3	351.1	346.7	350.8	358.3	351.0	350.5	348.6	20- 30	169.3	317.1	18,18
40	319.4	313.5	312.2	315.2	319.4	314.2	313.8	312.9	30- 40	209.0	526.1	29.9,29.9
50	276.7	268.3	271.2	273.4	274.3	268.3	268.1	269.5	40- 50	226.6	752.7	42.8,42.8
60	222.3	215.6	216.4	221.4	224.4	215.8	217.3	219.9	50- 60	219.7	972.5	55.3,55.3
70	163.3	159.1	159.3	164.9	168.3	159.1	158.1	162.5	60- 70	189.4	1162	66.1,66.1
80	111.6	106.2	103.6	110.3	116.5	109.0	103.9	108.8	70- 80	142.9	1305	74.2,74.2
90	78.67	72.89	69.21	76.29	80.20	74.83	71.04	74.25	80- 90	97.40	1402	79.8,79.8
100	67.42	60.44	62.30	67.93	67.47	62.63	64.90	66.92	90-100	74.64	1477	84,84
110	66.83	57.74	59.12	65.24	65.95	60.11	62.88	64.77	100-110	67.34	1544	87.8,87.8
120	60.00	54.98	55.93	61.47	57.83	57.18	60.93	61.48	110-120	60.09	1604	91.3,91.3
130	59.41	47.70	52.13	52.72	56.08	50.15	58.09	52.76	120-130	50.16	1654	94.1,94.1
140	57.47	43.13	47.91	45.71	54.28	45.05	53.36	48.17	130-140	39.05	1693	96.3,96.3
150	53.15	40.87	42.64	41.81	49.65	41.70	48.07	46.51	140-150	29.09	1723	98,98
160	47.10	38.47	38.89	40.37	43.45	40.02	42.62	44.87	150-160	19.97	1742	99.1,99.1
170	42.24	36.02	38.34	39.58	41.94	39.24	38.29	39.71	160-170	11.48	1754	99.8,99.8
180	48.55	45.35	51.42	45.27	48.84	45.25	51.31	45.36	170-180	4.039	1758	100,100
DEG	LUMINOUS INTENSITY:cd									UNIT:lm		

Conical surface Flux(90deg): 638.71 lm

%lum = 36.3%

%lamp = 36.3%

Conical surface Flux(120deg): 972.49 lm

%lum = 55.3%

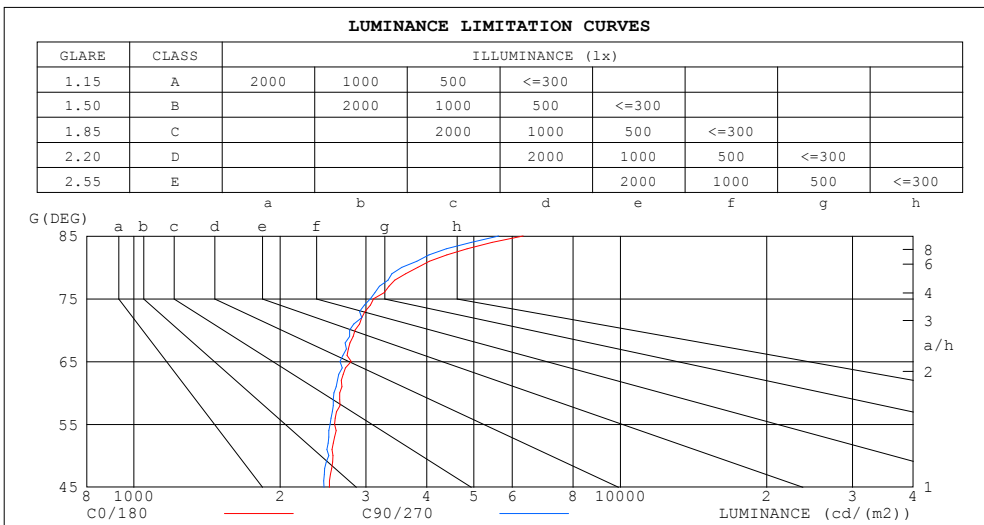
%lamp = 55.3%

C Range: 0 - 360DEG
 C Interval: 30.0DEG
 Test Speed: HIGH
 Temperature:25.3DEG
 Operators:admin
 Test Date:2022-03-16

□ Range: 0 - 180DEG
 □ Interval: 1.0DEG
 Test System:EVERFINE GO-2000B_V1 SYSTEM V2.00.411
 Humidity:65.0%
 Test Distance:8.780m [K=1.0000]
 Remarks:

LUMINANCE LIMITATION CURVES

Test:U:120.06V I:0.2593A P:28.404W PF:0.9114 Freq:60.00Hz Lamp Flux:1758.01x1 lm		
NAME: ASD lighting Corp	TYPE:	WEIGHT:
SPEC.:ASD-LFC-SN-16D28-AC-2700K	DIM.:	SERIAL No.:
MFR.: ASD lighting Corp	SUR.:0.43*0.39	Shielding Angle:



LUMINANCE cd/(m2)		
G (DEG)	C0/180	C90/270
85	6314	5627
80	3834	3556
75	3113	3066
70	2848	2777
65	2799	2655
60	2651	2580
55	2585	2530
50	2567	2516
45	2526	2461

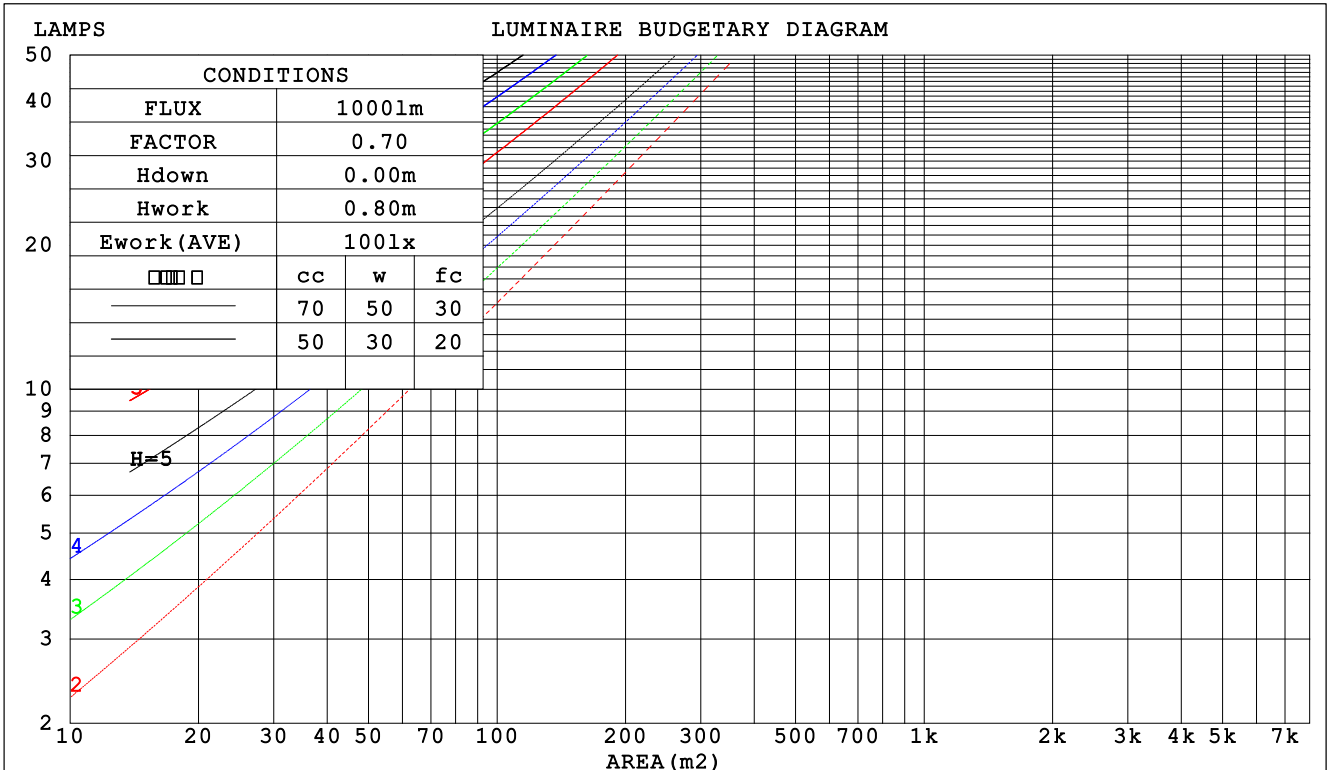
C Range: 0 - 360DEG
 C Interval: 30.0DEG
 Test Speed: HIGH
 Temperature:25.3DEG
 Operators:admin
 Test Date:2022-03-16

Range: 0 - 180DEG
 Interval: 1.0DEG
 Test System:EVERFINE GO-2000B_V1 SYSTEM V2.00.411
 Humidity:65.0%
 Test Distance:8.780m [K=1.0000]
 Remarks:

CU AND LUMINAIRE BUDGETARY ESTIMATE DIAGRAM

Test:U:120.06V I:0.2593A P:28.404W PF:0.9114 Freq:60.00Hz Lamp Flux:1758.01x1 lm		
NAME: ASD lighting Corp	TYPE:	WEIGHT:
SPEC.:ASD-LFC-SN-16D28-AC-2700K	DIM.:	SERIAL No.:
MFR.: ASD lighting Corp	SUR.:0.43*0.39	Shielding Angle:

□cc	80%			70%			50%			30%			10%			0
□w	50%	30%	10%	50%	30%	10%	50%	30%	10%	50%	30%	10%	50%	30%	10%	0
□fc	20%			20%			20%			20%			20%			0
RCR	RCR:Room Cavity Ratio						Coefficients of Utilization(CU)									
0.0	1.14	1.14	1.14	1.09	1.09	1.09	.00	.00	.00	.91	.91	.91	.83	.83	.83	.80
1.0	.97	.92	.87	.92	.88	.84	.84	.81	.77	.77	.74	.71	.70	.68	.66	.62
2.0	.83	.76	.69	.79	.73	.67	.72	.67	.62	.66	.62	.58	.60	.57	.54	.50
3.0	.72	.64	.57	.69	.61	.55	.63	.57	.51	.58	.52	.48	.53	.48	.45	.41
4.0	.64	.54	.47	.61	.52	.46	.56	.49	.43	.51	.45	.40	.47	.42	.38	.35
5.0	.56	.47	.40	.54	.46	.39	.50	.42	.37	.46	.39	.35	.42	.37	.33	.30
6.0	.51	.41	.35	.49	.40	.34	.45	.37	.32	.41	.35	.30	.38	.32	.28	.26
7.0	.46	.37	.31	.44	.36	.30	.40	.33	.28	.37	.31	.27	.34	.29	.25	.23
8.0	.41	.33	.27	.40	.32	.26	.37	.30	.25	.34	.28	.24	.31	.26	.22	.20
9.0	.38	.30	.24	.37	.29	.23	.34	.27	.22	.31	.25	.21	.29	.24	.20	.18
10.0	.35	.27	.22	.34	.26	.21	.31	.25	.20	.29	.23	.19	.27	.22	.18	.16



C Range: 0 - 360DEG
 C Interval: 30.0DEG
 Test Speed: HIGH
 Temperature:25.3DEG
 Operators:admin
 Test Date:2022-03-16

□ Range: 0 - 180DEG
 □ Interval: 1.0DEG
 Test System:EVERFINE GO-2000B_V1 SYSTEM V2.00.411
 Humidity:65.0%
 Test Distance:8.780m [K=1.0000]
 Remarks:

WEC AND CCEC

Test:U:120.06V I:0.2593A P:28.404W PF:0.9114 Freq:60.00Hz Lamp Flux:1758.01x1 lm		
NAME: ASD lighting Corp	TYPE:	WEIGHT:
SPEC.:ASD-LFC-SN-16D28-AC-2700K	DIM.:	SERIAL No.:
MFR.: ASD lighting Corp	SUR.:0.43*0.39	Shielding Angle:

<input type="checkbox"/> cc	80%	70%	50%	30%	10%	0
<input type="checkbox"/> w	50% 30% 10%	50% 30% 10%	50% 30% 10%	50% 30% 10%	50% 30% 10%	0
<input type="checkbox"/> fc	20%	20%	20%	20%	20%	0
RCR	RCR:Room Cavity Ratio		Wall Exitance Coefficients (WEC)			
0.0						
1.0	.357 .203 .064	.344 .196 .062	.319 .183 .058	.296 .171 .055	.275 .159 .051	
2.0	.316 .173 .053	.304 .168 .052	.282 .157 .049	.261 .146 .046	.242 .137 .043	
3.0	.284 .151 .045	.273 .146 .044	.253 .137 .042	.234 .128 .039	.216 .120 .037	
4.0	.258 .134 .039	.248 .130 .038	.229 .122 .036	.212 .114 .034	.196 .107 .032	
5.0	.236 .120 .035	.227 .116 .034	.210 .109 .032	.194 .102 .030	.179 .096 .029	
6.0	.217 .109 .031	.209 .105 .030	.193 .099 .029	.179 .093 .027	.165 .087 .026	
7.0	.200 .099 .028	.193 .096 .027	.179 .090 .026	.166 .085 .025	.153 .080 .023	
8.0	.186 .091 .026	.179 .088 .025	.166 .083 .024	.154 .078 .023	.143 .073 .021	
9.0	.174 .084 .023	.168 .082 .023	.156 .077 .022	.144 .072 .021	.134 .068 .020	
10.0	.163 .078 .022	.157 .076 .021	.146 .072 .020	.136 .067 .019	.126 .063 .018	

<input type="checkbox"/> cc	80%	70%	50%	30%	10%	0
<input type="checkbox"/> w	50% 30% 10%	50% 30% 10%	50% 30% 10%	50% 30% 10%	50% 30% 10%	0
<input type="checkbox"/> fc	20%	20%	20%	20%	20%	0
RCR	RCR:Room Cavity Ratio		Ceiling Cavity Exitance Coefficients (CCEC)			
0.0	.345 .345 .345	.295 .295 .295	.201 .201 .201	.116 .116 .116	.037 .037 .037	
1.0	.339 .311 .286	.290 .267 .246	.198 .184 .170	.114 .106 .099	.037 .034 .032	
2.0	.332 .288 .252	.284 .248 .217	.195 .172 .152	.112 .100 .089	.036 .032 .029	
3.0	.325 .272 .230	.278 .234 .199	.191 .163 .140	.110 .095 .082	.035 .031 .027	
4.0	.317 .259 .215	.272 .224 .187	.187 .156 .132	.108 .091 .078	.035 .030 .026	
5.0	.310 .249 .205	.266 .216 .178	.183 .151 .126	.106 .089 .075	.034 .029 .025	
6.0	.302 .241 .198	.260 .209 .172	.179 .146 .122	.104 .086 .072	.034 .028 .024	
7.0	.295 .235 .192	.254 .204 .168	.176 .143 .119	.102 .084 .071	.033 .028 .023	
8.0	.289 .229 .188	.249 .199 .164	.172 .140 .117	.100 .082 .069	.032 .027 .023	
9.0	.283 .225 .185	.244 .195 .162	.169 .137 .115	.098 .081 .068	.032 .027 .023	
10.0	.277 .221 .183	.239 .191 .160	.166 .135 .113	.097 .080 .068	.031 .026 .022	

C Range: 0 - 360DEG
 C Interval: 30.0DEG
 Test Speed: HIGH
 Temperature:25.3DEG
 Operators:admin
 Test Date:2022-03-16

Range: 0 - 180DEG
 Interval: 1.0DEG
 Test System:EVERFINE GO-2000B_V1 SYSTEM V2.00.411
 Humidity:65.0%
 Test Distance:8.780m [K=1.0000]
 Remarks:

UGR(Unified Glare Rating) Table

Test:U:120.06V I:0.2593A P:28.404W PF:0.9114 Freq:60.00Hz Lamp Flux:1758.01x1 lm										
NAME: ASD lighting Corp					TYPE:			WEIGHT:		
SPEC.:ASD-LFC-SN-16D28-AC-2700K					DIM.:			SERIAL No.:		
MFR.: ASD lighting Corp					SUR.:0.43*0.39			Shielding Angle:		
ceiling/cavity	0.7	0.7	0.5	0.5	0.3	0.7	0.7	0.5	0.5	0.3
walls	0.5	0.3	0.5	0.3	0.3	0.5	0.3	0.5	0.3	0.3
working plane	0.2	0.2	0.2	0.2	0.2	0.2	0.2	0.2	0.2	0.2
Room dimensions	Viewed crosswise					Viewed endwise				
x = 2H y = 2H	14.9	16.3	15.5	16.8	17.4	14.9	16.2	15.4	16.7	17.3
3H	16.9	18.1	17.5	18.7	19.3	16.8	18.0	17.4	18.6	19.3
4H	17.9	19.1	18.5	19.7	20.3	17.8	19.0	18.4	19.5	20.2
6H	19.0	20.0	19.6	20.6	21.3	18.8	19.9	19.4	20.5	21.2
8H	19.5	20.6	20.1	21.2	21.9	19.3	20.3	19.9	20.9	21.6
12H	20.2	21.2	20.8	21.8	22.5	19.9	20.9	20.5	21.5	22.2
4H 2H	15.6	16.7	16.2	17.3	18.0	15.5	16.7	16.1	17.3	17.9
3H	17.8	18.8	18.4	19.4	20.1	17.7	18.7	18.3	19.3	20.0
4H	18.9	19.8	19.6	20.5	21.2	18.8	19.7	19.5	20.4	21.1
6H	20.2	21.0	20.8	21.6	22.4	20.0	20.8	20.7	21.5	22.2
8H	20.8	21.6	21.5	22.3	23.0	20.6	21.3	21.3	22.0	22.8
12H	21.6	22.3	22.3	23.0	23.8	21.3	22.0	22.0	22.7	23.5
8H 4H	19.3	20.1	20.0	20.8	21.6	19.3	20.0	19.9	20.7	21.5
6H	20.8	21.5	21.5	22.2	23.0	20.6	21.3	21.4	22.0	22.8
8H	21.6	22.2	22.4	22.9	23.8	21.4	22.0	22.1	22.7	23.6
12H	22.6	23.1	23.4	23.9	24.8	22.3	22.8	23.1	23.6	24.4
12H 4H	19.4	20.1	20.1	20.8	21.6	19.3	20.0	20.0	20.7	21.5
6H	21.0	21.5	21.7	22.3	23.1	20.8	21.4	21.6	22.1	23.0
8H	21.9	22.4	22.7	23.1	24.0	21.7	22.2	22.4	22.9	23.8
Variations with the observer position at spacings:										
S = 1.0H	+ 0.1 / - 0.1					+ 0.1 / - 0.1				
1.5H	+ 0.2 / - 0.3					+ 0.2 / - 0.3				
2.0H	+ 0.2 / - 0.3					+ 0.2 / - 0.3				

CIE Pub.117, 1758 lm Total Lamp Luminous Flux Corrected (8log(F/F0) = 2.0)
 Area: 0.1677 m2

C Range: 0 - 360DEG
 C Interval: 30.0DEG
 Test Speed: HIGH
 Temperature:25.3DEG
 Operators:admin
 Test Date:2022-03-16

Range: 0 - 180DEG
 Interval: 1.0DEG
 Test System:EVERFINE GO-2000B_V1 SYSTEM V2.00.411
 Humidity:65.0%
 Test Distance:8.780m [K=1.0000]
 Remarks:

UTILIZATION FACTORS TABLE

Test:U:120.06V I:0.2593A P:28.404W PF:0.9114 Freq:60.00Hz Lamp Flux:1758.01x1 lm		
NAME: ASD lighting Corp	TYPE:	WEIGHT:
SPEC.:ASD-LFC-SN-16D28-AC-2700K	DIM.:	SERIAL No.:
MFR.: ASD lighting Corp	SUR.:0.43*0.39	Shielding Angle:

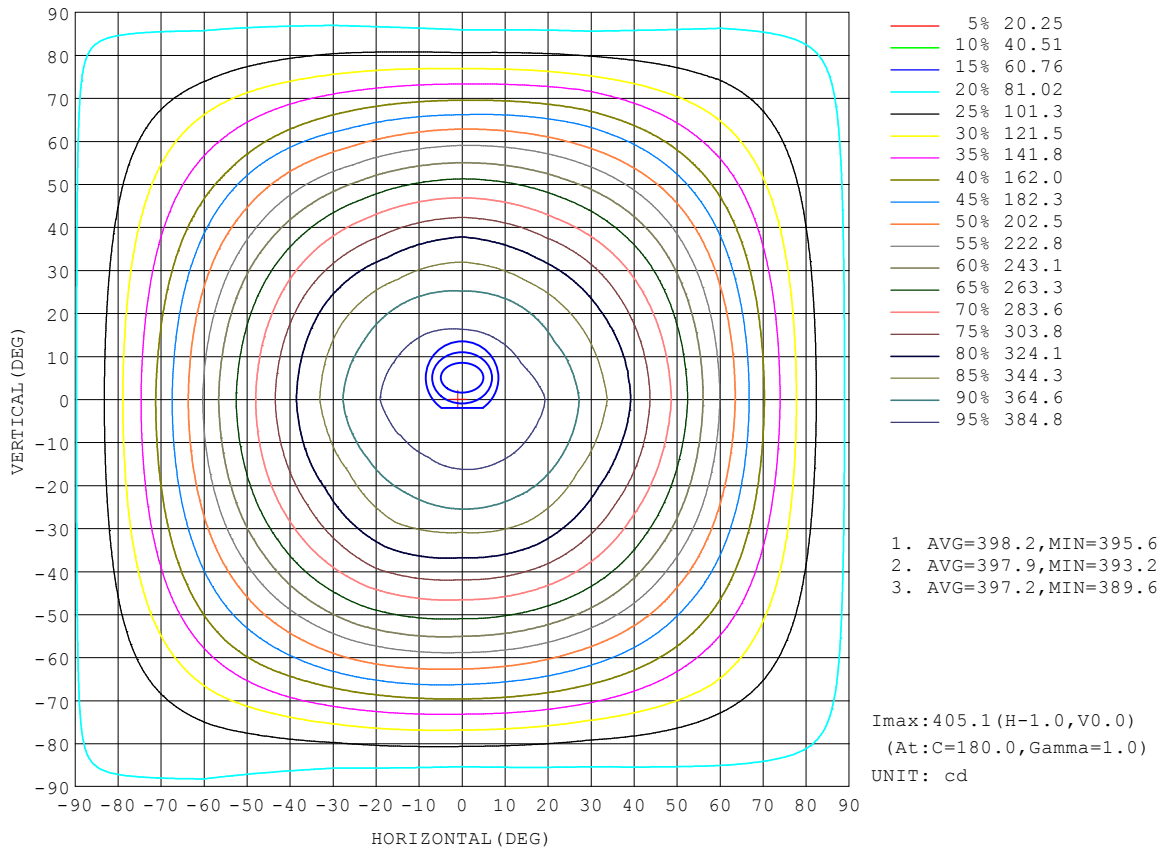
REFLECTANCE										
Ceiling	0.8	0.8	0.8	0.7	0.7	0.7	0.5	0.5	0.5	0
Walls	0.7	0.5	0.3	0.7	0.5	0.3	0.7	0.5	0.3	0
Working plane	0.2	0.2	0.2	0.2	0.2	0.2	0.2	0.2	0.2	0
ROOM INDEX	UTILIZATION FACTORS (PERCENT) $k(RI) \times RCR = 5$									
k = 0.60	48	36	29	47	36	29	45	35	28	22
0.80	58	45	37	56	44	37	53	43	36	28
1.00	66	53	45	64	52	44	60	52	43	34
1.25	73	61	52	70	59	51	65	56	49	39
1.50	78	66	58	75	64	57	70	61	54	44
2.00	85	75	67	82	72	65	76	68	62	50
2.50	89	80	72	86	77	70	79	72	66	53
3.00	93	84	77	89	81	75	82	76	71	57
4.00	98	90	84	93	87	81	86	81	76	61
5.00	101	94	89	96	91	86	88	84	80	64
ROOM INDEX	UF(total)									Direct
According to DIN EN 13032-2 2004			Suspended				SHRNOM = 1.25			

C Range: 0 - 360DEG
 C Interval: 30.0DEG
 Test Speed: HIGH
 Temperature:25.3DEG
 Operators:admin
 Test Date:2022-03-16

Range: 0 - 180DEG
 Interval: 1.0DEG
 Test System:EVERFINE GO-2000B_V1 SYSTEM V2.00.411
 Humidity:65.0%
 Test Distance:8.780m [K=1.0000]
 Remarks:

ISOCANDELA DIAGRAM

Test:U:120.06V I:0.2593A P:28.404W PF:0.9114 Freq:60.00Hz Lamp Flux:1758.01x1 lm		
NAME: ASD lighting Corp	TYPE:	WEIGHT:
SPEC.:ASD-LFC-SN-16D28-AC-2700K	DIM.:	SERIAL No.:
MFR.: ASD lighting Corp	SUR.:0.43*0.39	Shielding Angle:

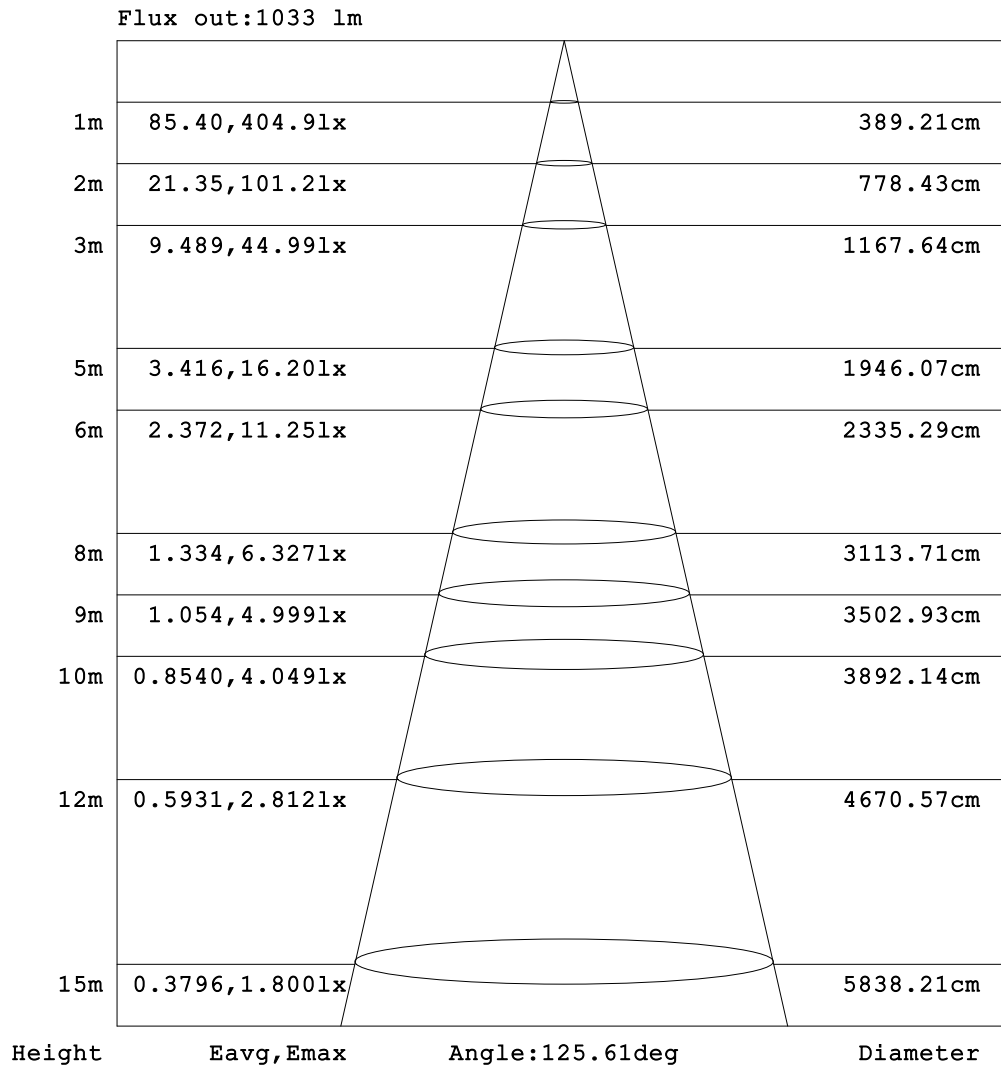


C Range: 0 - 360DEG
 C Interval: 30.0DEG
 Test Speed: HIGH
 Temperature:25.3DEG
 Operators:admin
 Test Date:2022-03-16

Range: 0 - 180DEG
 Interval: 1.0DEG
 Test System:EVERFINE GO-2000B_V1 SYSTEM V2.00.411
 Humidity:65.0%
 Test Distance:8.780m [K=1.0000]
 Remarks:

AAI Figure

Test:U:120.06V I:0.2593A P:28.404W PF:0.9114 Freq:60.00Hz Lamp Flux:1758.01x1 lm		
NAME: ASD lighting Corp	TYPE:	WEIGHT:
SPEC.:ASD-LFC-SN-16D28-AC-2700K	DIM.:	SERIAL No.:
MFR.: ASD lighting Corp	SUR.:0.43*0.39	Shielding Angle:



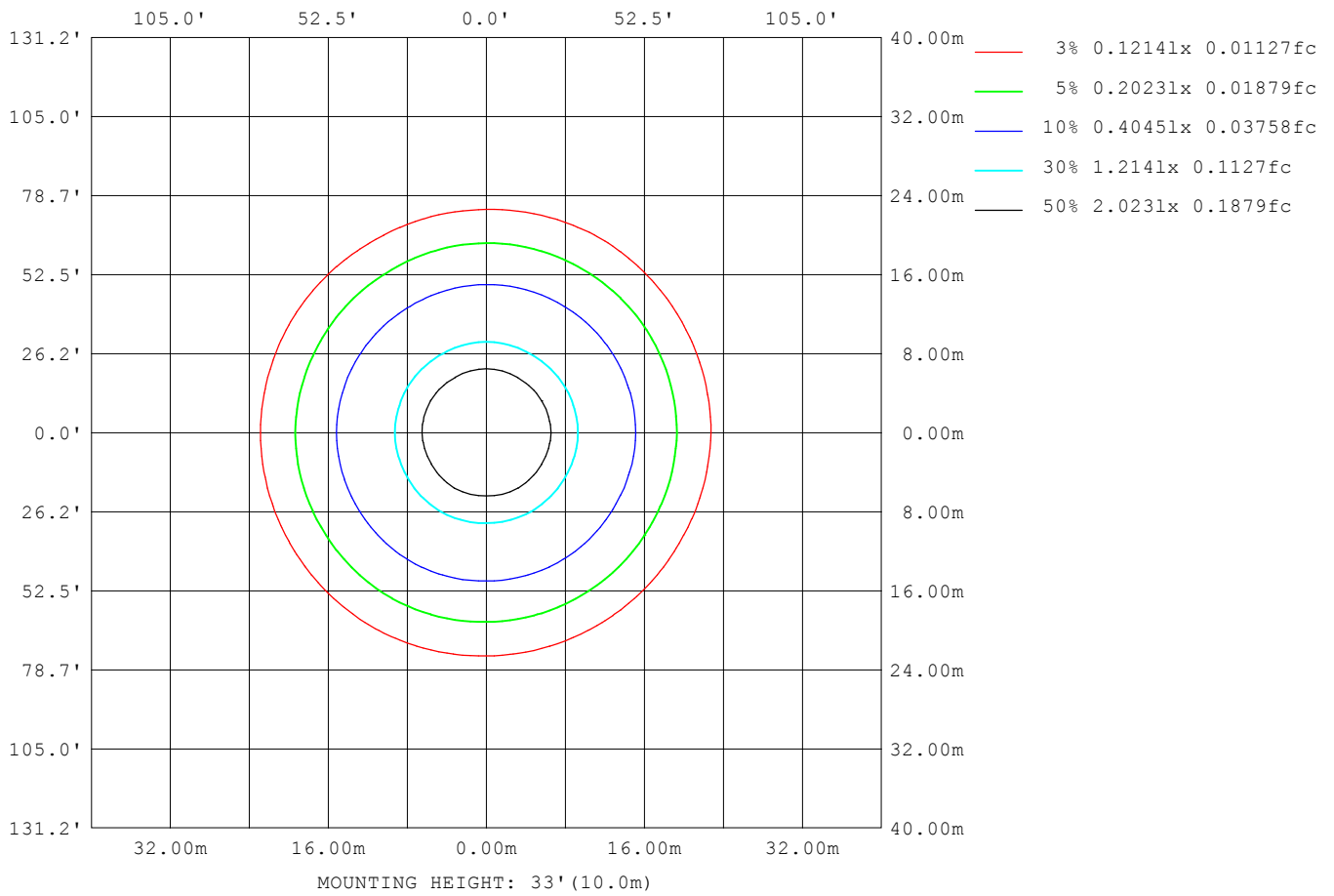
Note:The Curves indicate the illuminated area and the average illumination when the luminaire is at different distance.

C Range: 0 - 360DEG
 C Interval: 30.0DEG
 Test Speed: HIGH
 Temperature:25.3DEG
 Operators:admin
 Test Date:2022-03-16

Range: 0 - 180DEG
 Interval: 1.0DEG
 Test System:EVERFINE GO-2000B_V1 SYSTEM V2.00.411
 Humidity:65.0%
 Test Distance:8.780m [K=1.0000]
 Remarks:

ISOLUX DIAGRAM

Test:U:120.06V I:0.2593A P:28.404W PF:0.9114 Freq:60.00Hz Lamp Flux:1758.01x1 lm		
NAME: ASD lighting Corp	TYPE:	WEIGHT:
SPEC.:ASD-LFC-SN-16D28-AC-2700K	DIM.:	SERIAL No.:
MFR.: ASD lighting Corp	SUR.:0.43*0.39	Shielding Angle:



C Range: 0 - 360DEG
 C Interval: 30.0DEG
 Test Speed: HIGH
 Temperature:25.3DEG
 Operators:admin
 Test Date:2022-03-16

Range: 0 - 180DEG
 Interval: 1.0DEG
 Test System:EVERFINE GO-2000B_V1 SYSTEM V2.00.411
 Humidity:65.0%
 Test Distance:8.780m [K=1.0000]
 Remarks:

LED Avg.L Report

Test:U:120.06V I:0.2593A P:28.404W PF:0.9114 Freq:60.00Hz Lamp Flux:1758.01x1 lm		
NAME: ASD lighting Corp	TYPE:	WEIGHT:
SPEC.:ASD-LFC-SN-16D28-AC-2700K	DIM.:	SERIAL No.:
MFR.: ASD lighting Corp	SUR.:0.43*0.39	Shielding Angle:

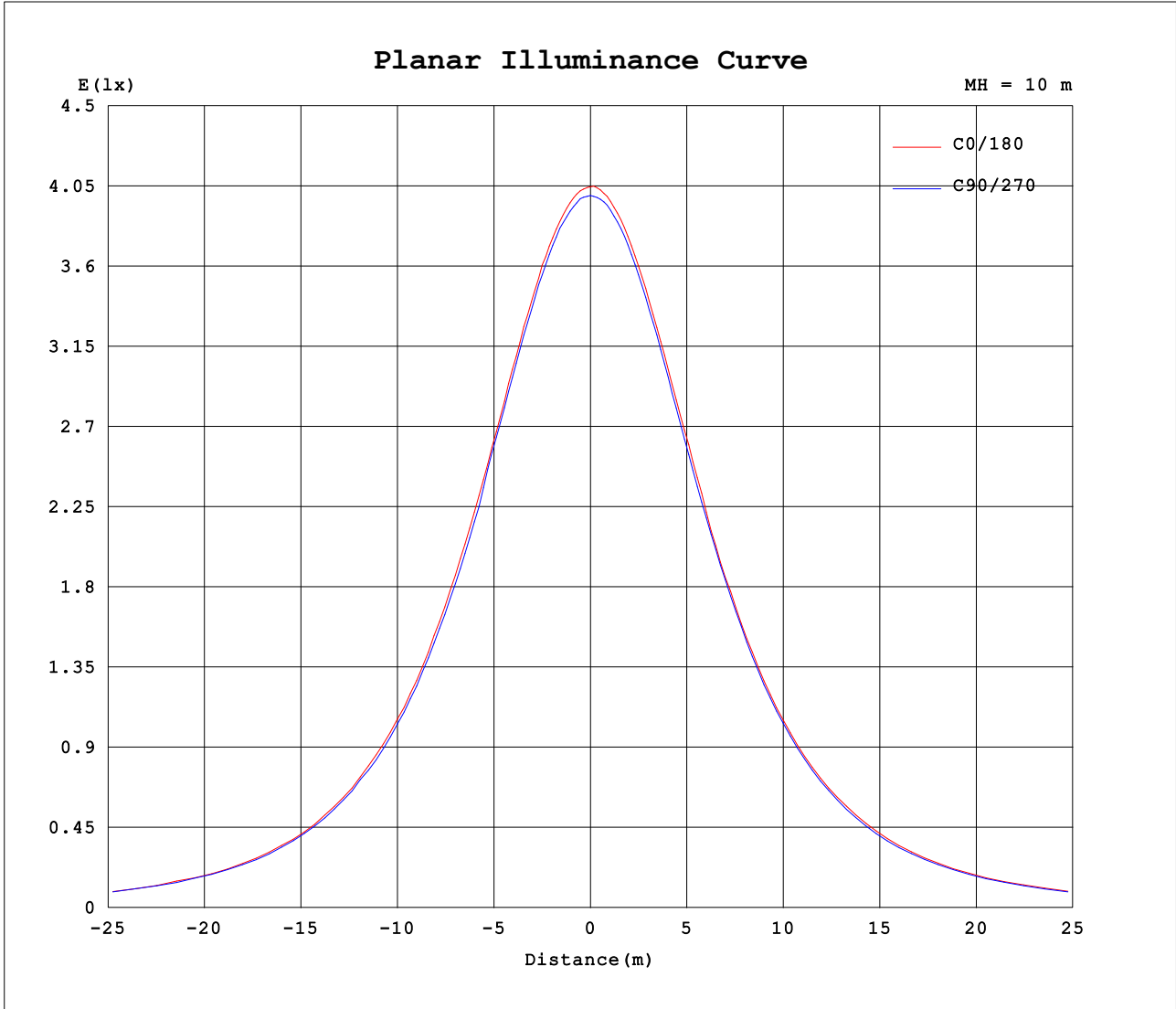
AvgL	cd/m2
L_0~180 (65) av	2780
L_0~180 (75) av	3167
L_0~180 (85) av	6399
L_90~270 (65) av	2667
L_90~270 (75) av	3050
L_90~270 (85) av	5678
L_45 (65) av	2694
L_45 (75) av	3104
L_45 (85) av	6012

Standard: GB/T 29293-2012

C Range: 0 - 360DEG
 C Interval: 30.0DEG
 Test Speed: HIGH
 Temperature:25.3DEG
 Operators:admin
 Test Date:2022-03-16

Range: 0 - 180DEG
 Interval: 1.0DEG
 Test System:EVERFINE GO-2000B_V1 SYSTEM V2.00.411
 Humidity:65.0%
 Test Distance:8.780m [K=1.0000]
 Remarks:

Planar Illuminance Curve



C Range: 0 - 360DEG
 C Interval: 30.0DEG
 Test Speed: HIGH
 Temperature:25.3DEG
 Operators:admin
 Test Date:2022-03-16

Range: 0 - 180DEG
 Interval: 1.0DEG
 Test System:EVERFINE GO-2000B_V1 SYSTEM V2.00.411
 Humidity:65.0%
 Test Distance:8.780m [K=1.0000]
 Remarks:

LUMINOUS DISTRIBUTION INTENSITY DATA

Test:U:120.06V I:0.2593A P:28.404W PF:0.9114 Freq:60.00Hz Lamp Flux:1758.01x1 lm		
NAME: ASD lighting Corp	TYPE:	WEIGHT:
SPEC.:ASD-LFC-SN-16D28-AC-2700K	DIM.:	SERIAL No.:
MFR.: ASD lighting Corp	SUR.:0.43*0.39	Shielding Angle:

Table--1

UNIT: cd

C (DEG) □ (DEG)	0	30	60	90	120	150	180	210	240	270	300	330							
0	405	402	401	400	399	398	405	402	401	400	399	398							
5	403	401	399	398	397	396	404	401	400	399	398	396							
10	399	397	395	394	393	392	400	397	396	395	394	392							
15	392	390	388	388	386	386	393	390	389	387	387	386							
20	382	381	379	378	377	377	383	381	380	377	377	377							
25	370	369	366	366	365	366	371	368	368	365	366	365							
30	356	351	351	347	351	350	358	353	349	351	347	350							
35	340	333	334	331	337	331	337	336	332	335	331	334							
40	319	313	314	312	317	314	319	317	312	314	311	315							
45	300	292	292	292	298	294	298	295	291	293	290	294							
50	277	268	268	271	275	272	274	270	267	268	267	272							
55	249	243	243	243	250	248	251	245	241	243	243	247							
60	222	215	216	216	221	221	224	218	214	217	219	221							
65	198	187	188	188	195	195	196	190	189	190	192	194							
70	163	161	158	159	163	166	168	159	159	158	163	162							
75	135	132	131	133	139	139	140	134	132	132	135	137							
80	112	109	104	104	107	114	116	110	108	104	108	110							
85	92.3	88.5	84.5	82.2	85.0	92.3	94.8	90.0	88.2	83.7	84.8	90.0							
90	78.7	75.1	70.7	69.2	73.4	79.2	80.2	75.4	74.2	71.0	71.6	76.9							
95	70.8	66.5	62.5	63.8	68.5	72.3	71.3	66.4	66.5	66.2	67.2	70.4							
100	67.4	62.2	58.7	62.3	66.5	69.3	67.5	62.1	63.1	64.9	65.7	68.2							
105	66.8	60.8	56.8	60.9	65.0	68.0	66.5	60.7	61.9	64.1	64.6	67.4							
110	66.8	60.4	55.1	59.1	63.6	66.9	65.9	59.7	60.5	62.9	63.2	66.3							
115	59.9	59.8	53.3	57.4	62.2	65.4	58.5	58.4	59.3	61.6	62.1	65.1							
120	60.0	58.5	51.5	55.9	60.6	62.4	57.8	56.2	58.2	60.9	60.7	62.3							
125	59.9	54.5	48.8	54.0	57.2	57.3	57.1	52.9	55.5	59.6	57.3	57.1							
130	59.4	49.9	45.5	52.1	52.4	53.0	56.1	49.5	50.8	58.1	52.5	53.1							
135	58.6	47.8	42.6	50.5	47.5	50.4	55.0	47.5	46.8	56.7	48.9	51.7							
140	57.5	46.4	39.9	47.9	43.6	47.8	54.3	45.4	44.7	53.4	46.4	50.0							
145	56.0	45.3	38.1	45.6	41.5	45.3	52.8	43.2	43.3	50.4	44.9	48.1							
150	53.1	43.8	38.0	42.6	40.6	43.0	49.6	41.2	42.2	48.1	45.7	47.3							
155	50.1	41.4	37.6	40.8	40.4	41.1	45.9	39.5	41.6	45.7	45.6	46.5							
160	47.1	41.1	35.9	38.9	40.2	40.5	43.4	39.1	41.0	42.6	43.4	46.4							
165	44.0	39.7	35.0	37.8	39.7	40.2	42.7	39.8	40.3	39.7	40.3	45.4							
170	42.2	37.2	34.8	38.3	38.8	40.4	41.9	39.9	38.6	38.3	37.3	42.1							
175	44.7	44.4	39.7	46.1	48.3	42.4	45.1	41.6	46.1	46.3	39.5	41.9							
180	48.6	44.6	46.1	51.4	47.7	42.8	48.8	44.4	46.1	51.3	48.0	42.8							

C Range: 0 - 360DEG
 C Interval: 30.0DEG
 Test Speed: HIGH
 Temperature:25.3DEG
 Operators:admin
 Test Date:2022-03-16

□ Range: 0 - 180DEG
 □ Interval: 1.0DEG
 Test System:EVERFINE GO-2000B_V1 SYSTEM V2.00.411
 Humidity:65.0%
 Test Distance:8.780m [K=1.0000]
 Remarks: