



LED FLUSHMOUNT LOFT

► **DESIGN** - LED FLUSHMOUNT LOFT has a modern, multipurpose design and a stylish look with efficient lighting. Durable housing resistant to rust and impact along with a acrylic lens provide many years of use. It is designed to operate on 120V circuits.

► **COLOR SELECTABLE** - You can choose either a 2,700K soft white, 3,000K warm white, 3,500K neutral white, 4,000K cool white, or 5,000K daylight color temperature.

► **DIMMING** - Smooth triac dimming capabilities ranging from 10% to 100% with modern LED dimmers allow you to control the look and feel of your space.

► **APPLICATION** - The LED FLUSHMOUNT LOFT provides bright, yet smooth lighting for your family room, bedroom, hallway, corridor, or any other common area in your living space. This fixture is also Damp Locations rated.

► **ADVANTAGES** - With a lifespan of 50,000 hours, these fixtures are made to last decades under normal operation! ASD provides a 5-year limited warranty along with ETL certification to guarantee top quality products and safety!

| | |
|----------------|--|
| Catalog number | |
| Notes | |
| Type | |



Finish: Nickel Black

| Model | Size | Watts | Voltage | Dimmable | Lumens | CCT | Finish | Dimensions (LxWxH) |
|------------------------|---------|-------|---------|----------|----------------------------------|--|--------|----------------------------------|
| ASD-LFC-LF-12D20-AC-NK | 12 inch | 20W | 120 V | TRIAC | 970/1,057/1,080/1,130/1,113 lm | 5CCT (2,700/3,000/3,500/4,000/5,000 K) | Nickel | 11-13/16" x 11-13/16" x 3-1/2" |
| ASD-LFC-LF-12D20-AC-BK | 12 inch | 20W | 120 V | TRIAC | 970/1,057/1,080/1,130/1,113 lm | 5CCT (2,700/3,000/3,500/4,000/5,000 K) | Black | 11-13/16" x 11-13/16" x 3-1/2" |
| ASD-LFC-LF-14D24-AC-NK | 14 inch | 24W | 120 V | TRIAC | 1,180/1,274/1,367/1,459/1,534 lm | 5CCT (2,700/3,000/3,500/4,000/5,000 K) | Nickel | 14" x 14" x 3-3/4" |
| ASD-LFC-LF-14D24-AC-BK | 14 inch | 24W | 120 V | TRIAC | 1,180/1,274/1,367/1,459/1,534 lm | 5CCT (2,700/3,000/3,500/4,000/5,000 K) | Black | 14" x 14" x 3-3/4" |
| ASD-LFC-LF-16D28-AC-NK | 16 inch | 28W | 120 V | TRIAC | 1,325/1,446/1,553/1,623/1,576 lm | 5CCT (2,700/3,000/3,500/4,000/5,000 K) | Nickel | 15-3/8" x 15-3/8" x 3-15/16" |
| ASD-LFC-LF-16D28-AC-BK | 16 inch | 28W | 120 V | TRIAC | 1,325/1,446/1,553/1,623/1,576 lm | 5CCT (2,700/3,000/3,500/4,000/5,000 K) | Black | 15-3/8" x 15-3/8" x 3-15/16" |
| ASD-LFC-LF-18D35-AC-NK | 18 inch | 35W | 120 V | TRIAC | 1,766/1,915/1,989/1,981/1,992 lm | 5CCT (2,700/3,000/3,500/4,000/5,000 K) | Nickel | 17-15/16" x 17-15/16" x 3-15/16" |
| ASD-LFC-LF-18D35-AC-BK | 18 inch | 35W | 120 V | TRIAC | 1,766/1,915/1,989/1,981/1,992 lm | 5CCT (2,700/3,000/3,500/4,000/5,000 K) | Black | 17-15/16" x 17-15/16" x 3-15/16" |
| ASD-LFC-LF-20D42-AC-NK | 20 inch | 42W | 120 V | TRIAC | 2,028/2,181/2,356/2,475/2,474 lm | 5CCT (2,700/3,000/3,500/4,000/5,000 K) | Nickel | 19-1/8" x 19-1/8" x 4-1/8" |
| ASD-LFC-LF-20D42-AC-BK | 20 inch | 42W | 120 V | TRIAC | 2,028/2,181/2,356/2,475/2,474 lm | 5CCT (2,700/3,000/3,500/4,000/5,000 K) | Black | 19-1/8" x 19-1/8" x 4-1/8" |

For most up-to-date spec sheets please refer to asd-lighting.com



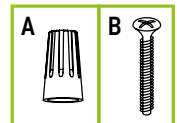
LED FLUSHMOUNT LOFT

PRODUCT SPECIFICATIONS:

| Construction & Materials | | | | |
|------------------------------|---|----------------------------------|--|----------------------------------|
| Housing | Iron | | | |
| Lens | Acrylic | | | |
| Finish | Black, Nickel | | | |
| Weight | ASD-LFC-LF-12D20-AC-NK ASD-LFC-LF-12D20-AC-BK | 1 lbs (0.5 kg) | ASD-LFC-LF-18D35-AC-NK ASD-LFC-LF-18D35-AC-BK | 2.5 lbs (1.1 kg) |
| | ASD-LFC-LF-14D24-AC-NK ASD-LFC-LF-14D24-AC-BK | 1.4 lbs (0.6 kg) | ASD-LFC-LF-20D42-AC-NK ASD-LFC-LF-20D42-AC-BK | 3.3 lbs (1.5 kg) |
| | ASD-LFC-LF-16D28-AC-NK ASD-LFC-LF-16D28-AC-BK | 2.4 lbs (1.1 kg) | | |
| | | | | |
| Environmental system | | | | |
| Work environment | Suitable for Damp Locations | | | |
| Operating temperature | -4°F to 113°F (-20°C to 45°C) | | | |
| L-70 Life | > 50,000 hrs | | | |
| Optical system | | | | |
| Luminous flux | ASD-LFC-LF-12D20-AC-NK ASD-LFC-LF-12D20-AC-BK | 970/1,057/1,080/1,130/1,113 lm | ASD-LFC-LF-18D35-AC-NK ASD-LFC-LF-18D35-AC-BK | 1,766/1,915/1,989/1,981/1,992 lm |
| | ASD-LFC-LF-14D24-AC-NK ASD-LFC-LF-14D24-AC-BK | 1,180/1,274/1,367/1,459/1,534 lm | ASD-LFC-LF-20D42-AC-NK ASD-LFC-LF-20D42-AC-BK | 2,028/2,181/2,356/2,475/2,474 lm |
| | ASD-LFC-LF-16D28-AC-NK ASD-LFC-LF-16D28-AC-BK | 1,325/1,446/1,553/1,623/1,576 lm | | |
| | | | | |
| Color temperature | 5CCT switch (2,700/3,000/3,500/4,000/5,000 K), 3,000 K by default | | | |
| CRI | > 80 | | | |
| Electrical system | | | | |
| Input voltage | 120 V | | | |
| Max input current | ASD-LFC-LF-12D20-AC-NK ASD-LFC-LF-12D20-AC-BK | 0.18 A | ASD-LFC-LF-18D35-AC-NK ASD-LFC-LF-18D35-AC-BK | 0.32 A |
| | ASD-LFC-LF-14D24-AC-NK ASD-LFC-LF-14D24-AC-BK | 0.22 A | ASD-LFC-LF-20D42-AC-NK ASD-LFC-LF-20D42-AC-BK | 0.4 A |
| | ASD-LFC-LF-16D28-AC-NK ASD-LFC-LF-16D28-AC-BK | 0.4 A | | |
| | | | | |
| Inrush current (Action time) | ASD-LFC-LF-12D20-AC-NK ASD-LFC-LF-12D20-AC-BK | 0.16 A (0.1 S) | ASD-LFC-LF-18D35-AC-NK ASD-LFC-LF-18D35-AC-BK | 0.29 A (0.1 S) |
| | ASD-LFC-LF-14D24-AC-NK ASD-LFC-LF-14D24-AC-BK | 0.2 A (0.1 S) | ASD-LFC-LF-20D42-AC-NK ASD-LFC-LF-20D42-AC-BK | 0.37 A (0.1 S) |
| | ASD-LFC-LF-16D28-AC-NK ASD-LFC-LF-16D28-AC-BK | | | |
| | | | | |
| Off state power | 0W | | | |
| Power consumption | ASD-LFC-LF-12D20-AC-NK ASD-LFC-LF-12D20-AC-BK | 20W | ASD-LFC-LF-18D35-AC-NK ASD-LFC-LF-18D35-AC-BK | 35W |
| | ASD-LFC-LF-14D24-AC-NK ASD-LFC-LF-14D24-AC-BK | 24W | ASD-LFC-LF-20D42-AC-NK ASD-LFC-LF-20D42-AC-BK | 42W |
| | ASD-LFC-LF-16D28-AC-NK ASD-LFC-LF-16D28-AC-BK | 28W | | |
| | | | | |
| Power factor | > 0.9 | | | |
| Output voltage | - | | | |
| Max output current | - | | | |
| Surge protection DM/CM | 1.25 kV / 1.25 kV | | | |
| Dimming range | | | Regular and voluntary certifications | |
| 10-100% | | | 5-year limited warranty | |
| Dimming compatible controls | | | cETLus certified 4001256 | |
| Brand | Lutron | Leviton | | |
| Models | MACL-153MLH-WH | R02-DW6HD-2RW | | |
| | STCL-153PH-WH | R00-RNL06-0TW | | |
| | PD-6WCL-WH-R | R68-06674-POT | | |
| | DVCL-153PR | DSL06 | | |
| | P-PKG1W | | | |

PACKAGE CONTENTS:

| Description | Q-ty |
|---------------------|------|
| LED Flushmount Loft | 1 |
| Wire nut (A) | 3 |
| Screw (B) | 2 |
| Box | 1 |



For most up-to-date spec sheets please refer to asd-lighting.com



LED FLUSHMOUNT LOFT

INSTALLATION GUIDE

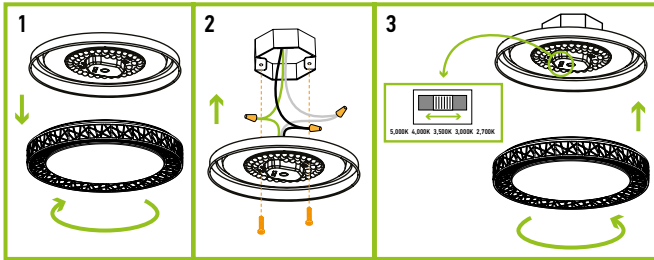
IMPORTANT SAFETY INFORMATION:

Please read all the instructions below before installation.

- ▶ Make sure that the supply voltage corresponds to the rated product voltage.
- ▶ The product must be installed by a qualified electrician in accordance with the National Electrical Code and corresponding local codes.
- ▶ If the product is damaged, do not use it.

INSTALLATION STEPS:

1. Remove the lens by rotating it clockwise.
2. Attach the two screws to the outlet box. Connect the wires: Black to Black, White to White, Ground to Ground. Secure the connection with wire nuts. Carefully tuck all the wires back into the outlet box.
3. Choose either 2,700K, 3,000K, 3,500K, 4,000K or 5,000K with a simple switch. Attach the lens and rotate it counter-clockwise to secure it to the fixture.



⚠ WARNING

RISK OF PERSONAL INJURY – READ and follow all WARNINGS and installation instructions. Keep or give to the owner for future reference.

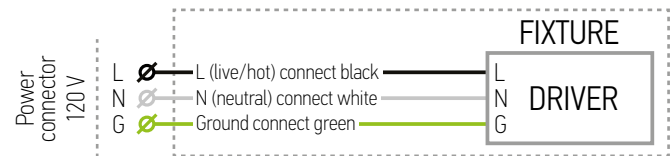
Risk of cuts: Wear gloves to prevent cuts or abrasions when removing from carton, handling, installing, and maintaining this product.

Risk of electric shock: This product must be installed in accordance with the applicable installation code by a person familiar with the construction and operation of the product and the hazards involved.

Risk of Fire: Minimum 194°F supply conductors. Consult a qualified electrician to ensure correct branch circuit conductor.

ASD® assumes no responsibility for claims arising out of improper or careless installation or handling of this product.

ELECTRICAL SCHEMATIC DIAGRAM:



ORDERING INFORMATION

| Model | UPC | Pcs. per carton | Carton size | Carton weight | GTIN 14 |
|------------------------|--------------|-----------------|-----------------------|---------------|----------------|
| ASD-LFC-LF-12D20-AC-NK | 810128110723 | 4 | 17.3" x 13.2" x 13.2" | 8.6 lbs | 10810128110720 |
| ASD-LFC-LF-12D20-AC-BK | 810128110716 | 4 | 17.3" x 13.2" x 13.2" | 8.6 lbs | 10810128110713 |
| ASD-LFC-LF-14D24-AC-NK | 810128110747 | 4 | 18.9" x 15.8" x 15.8" | 14.6 lbs | 10810128110744 |
| ASD-LFC-LF-14D24-AC-BK | 810128110730 | 4 | 18.9" x 15.8" x 15.8" | 14.6 lbs | 10810128110737 |
| ASD-LFC-LF-16D28-AC-NK | 810050737876 | 4 | 20.5" x 18.1" x 18.3" | 17.6 lbs | 10810050737873 |
| ASD-LFC-LF-16D28-AC-BK | 810050737869 | 4 | 20.5" x 18.1" x 18.3" | 17.6 lbs | 10810050737866 |
| ASD-LFC-LF-18D35-AC-NK | 810128110761 | 4 | 19.7" x 19.5" x 19.7" | 21.8 lbs | 10810128110751 |
| ASD-LFC-LF-18D35-AC-BK | 810128110754 | 4 | 19.7" x 19.5" x 19.7" | 21.8 lbs | 10810128110751 |
| ASD-LFC-LF-20D42-AC-NK | 810050737142 | 4 | 21.3" x 19.9" x 21.5" | 26 lbs | 10810050737149 |
| ASD-LFC-LF-20D42-AC-BK | 810050737135 | 4 | 21.3" x 19.9" x 21.5" | 26 lbs | 10810050737132 |

For most up-to-date spec sheets please refer to asd-lighting.com