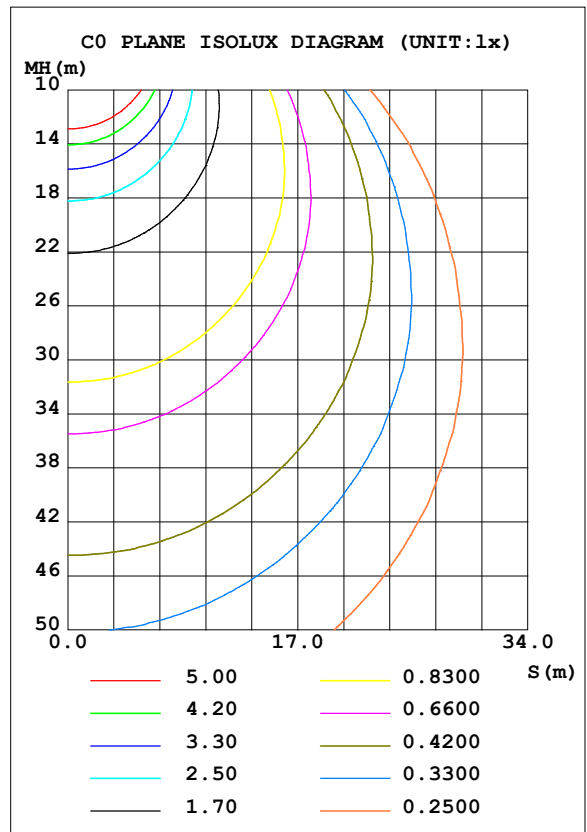
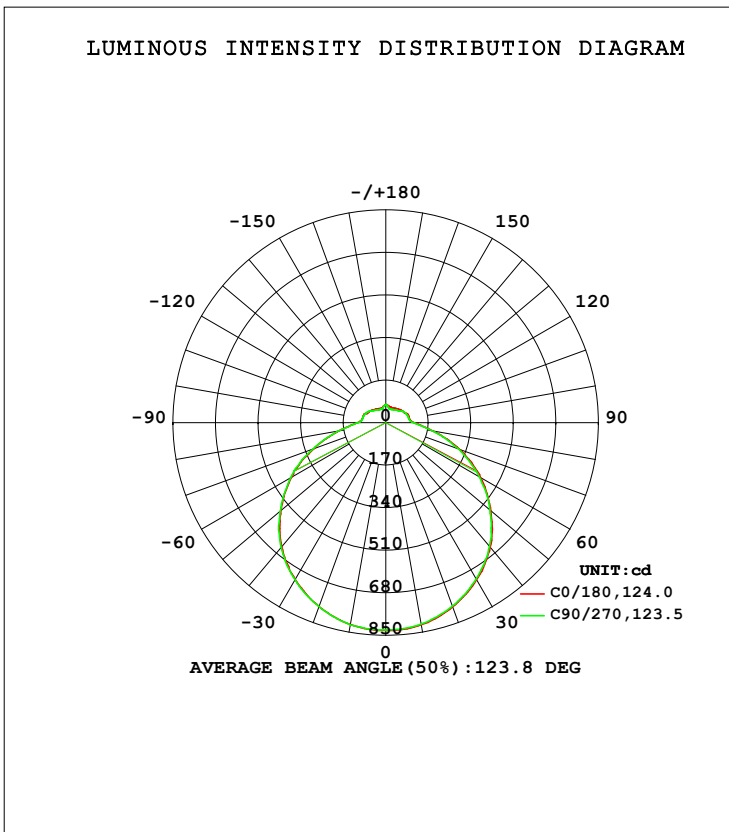


LUMINAIRE PHOTOMETRIC TEST REPORT

Test:U:120.03V I:0.3164A P:37.535W PF:0.9884 Freq:60.00Hz Lamp Flux:3287.57x1 lm		
NAME: ASD Lighting Corp	TYPE:ASD-LFC-MY-20D42S-RGB-SMARTLIGHT:	
SPEC.:ASD-LFC-MY-20D42S-RGB-SMART-5000K	DIM.:	SERIAL No.:
MFR.: ASD Lighting Corp	SUR.: -0.491	Shielding Angle:

DATA OF LAMP		PHOTOMETRIC DATA Eff: 87.59 lm/W			
MODEL		I _{max} (cd)	830.8	S/MH (C0/180)	1.30
NOMINAL POWER (W)	--	LOR (%)	100.0	S/MH (C90/270)	1.30
RATED VOLTAGE (V)	--	TOTAL FLUX (lm)	3287.6	□ UP, DN (C0-180)	7.8, 42.2
NOMINAL FLUX (lm)	3287.57	CIE CLASS	SEMI-D.	□ UP, DN (C180-360)	7.7, 42.3
LAMPS INSIDE	1	□ up (%)	15.5	CIBSE SHR NOM	1.50
TEST VOLTAGE (V)	--	□ down (%)	84.5	CIBSE SHR MAX	1.50



C Range: 0 - 360DEG
 C Interval: 22.5DEG
 Test Speed: HIGH
 Temperature: 25.3DEG
 Operators: chen
 Test Date: 2022-10-04

□ Range: 0 - 180DEG
 □ Interval: 1.0DEG
 Test System: EVERFINE GO-3000H_V1 SYSTEM V2.00.411
 Humidity: 65.0%
 Test Distance: 8.650m [K=1.0000]
 Remarks:

ZONAL FLUX DIAGRAM

ZONAL FLUX DIAGRAM:

mm	C0	C45	C90	C135	C180	C225	C270	C315	mm	□ zone	□ total	%lum,lamp
10	820.0	818.4	816.9	815.9	818.6	818.5	820.8	818.6	0- 10	78.64	78.64	2.39,2.39
20	783.4	783.1	779.9	778.3	781.2	782.4	781.9	782.9	10- 20	226.7	305.3	9.29,9.29
30	726.0	723.5	721.7	720.3	723.9	724.0	726.0	728.7	20- 30	348.3	653.7	19.9,19.9
40	649.2	645.8	644.4	643.7	646.5	646.3	650.5	653.0	30- 40	430.8	1085	33,33
50	547.5	543.2	542.5	545.9	548.3	549.0	551.4	551.1	40- 50	463.1	1548	47.1,47.1
60	436.4	434.8	432.1	433.3	434.6	435.1	439.0	441.8	50- 60	440.6	1988	60.5,60.5
70	313.3	311.5	311.5	307.8	306.9	306.8	311.2	312.5	60- 70	370.8	2359	71.8,71.8
80	191.7	189.9	187.1	186.0	189.6	187.6	189.2	191.1	70- 80	262.4	2621	79.7,79.7
90	114.4	112.7	110.8	111.3	113.3	113.0	113.5	111.8	80- 90	157.8	2779	84.5,84.5
100	96.39	93.83	93.94	94.10	95.33	93.61	94.77	94.30	90-100	109.7	2889	87.9,87.9
110	95.40	90.53	91.39	89.95	93.71	89.15	91.69	91.37	100-110	98.62	2988	90.9,90.9
120	84.37	84.14	85.61	85.07	81.88	84.28	85.66	85.08	110-120	87.00	3075	93.5,93.5
130	79.46	71.66	73.52	70.80	76.55	71.52	74.48	72.70	120-130	70.95	3146	95.7,95.7
140	72.51	61.60	66.28	60.92	69.26	60.36	65.56	60.87	130-140	52.57	3198	97.3,97.3
150	67.44	59.80	60.57	59.36	64.51	58.37	59.93	59.01	140-150	38.68	3237	98.5,98.5
160	65.33	60.38	57.88	57.81	61.06	56.77	57.93	58.51	150-160	27.53	3264	99.3,99.3
170	68.66	66.60	63.04	64.83	64.71	64.55	61.95	64.24	160-170	16.94	3281	99.8,99.8
180	72.89	68.48	73.29	68.92	72.85	68.50	73.37	68.93	170-180	6.334	3288	100,100
DEG	LUMINOUS INTENSITY:cd									UNIT:lm		

Conical surface Flux(90deg): 1315.8 lm

%lum = 40.0%

%lamp = 40.0%

Conical surface Flux(120deg): 1988.2 lm

%lum = 60.5%

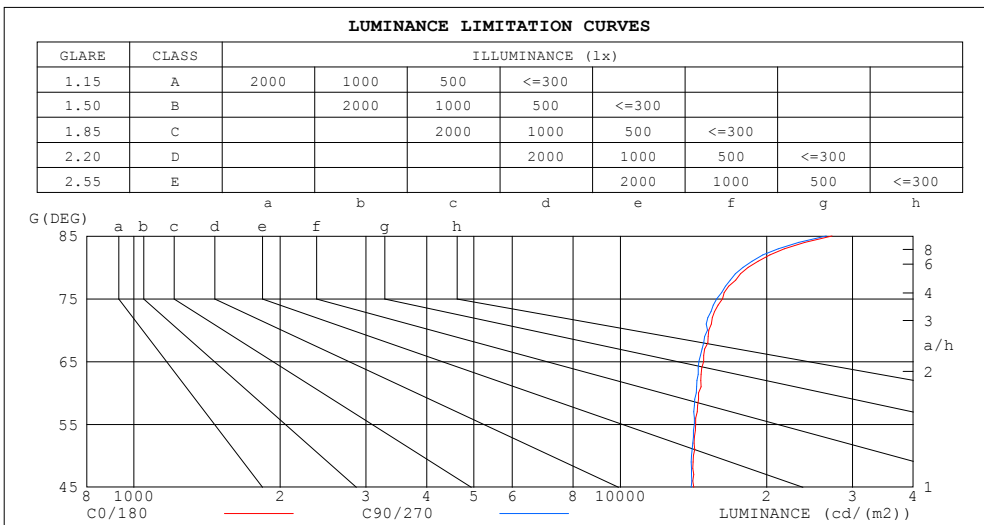
%lamp = 60.5%

C Range: 0 - 360DEG
 C Interval: 22.5DEG
 Test Speed: HIGH
 Temperature:25.3DEG
 Operators:chen
 Test Date:2022-10-04

□ Range: 0 - 180DEG
 □ Interval: 1.0DEG
 Test System:EVERFINE GO-3000H_V1 SYSTEM V2.00.411
 Humidity:65.0%
 Test Distance:8.650m [K=1.0000]
 Remarks:

LUMINANCE LIMITATION CURVES

Test:U:120.03V I:0.3164A P:37.535W PF:0.9884 Freq:60.00Hz Lamp Flux:3287.57x1 lm		
NAME: ASD Lighting Corp	TYPE:ASD-LFC-MY-20D42S-RGB-SMARTLIGHT:	
SPEC.:ASD-LFC-MY-20D42S-RGB-SMART-5000K	DIM.:	SERIAL No.:
MFR.: ASD Lighting Corp	SUR.: -0.491	Shielding Angle:



LUMINANCE cd/(m2)		
G (DEG)	C0/180	C90/270
85	27248	26530
80	18314	17881
75	16235	15782
70	15198	15109
65	14840	14508
60	14482	14339
55	14285	14202
50	14133	14004
45	14165	13993

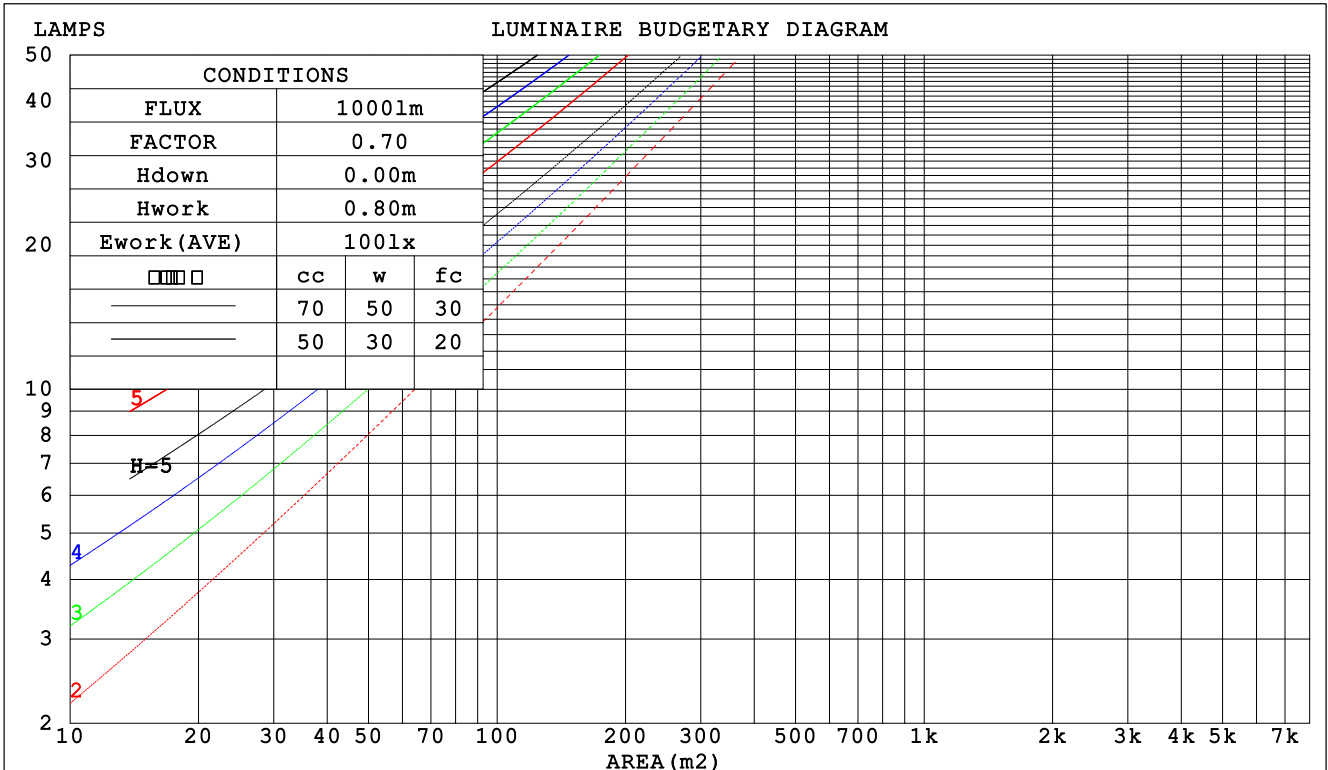
C Range: 0 - 360DEG
 C Interval: 22.5DEG
 Test Speed: HIGH
 Temperature:25.3DEG
 Operators:chen
 Test Date:2022-10-04

Range: 0 - 180DEG
 Interval: 1.0DEG
 Test System:EVERFINE GO-3000H_V1 SYSTEM V2.00.411
 Humidity:65.0%
 Test Distance:8.650m [K=1.0000]
 Remarks:

CU AND LUMINAIRE BUDGETARY ESTIMATE DIAGRAM

Test:U:120.03V I:0.3164A P:37.535W PF:0.9884 Freq:60.00Hz Lamp Flux:3287.57x1 lm		
NAME: ASD Lighting Corp	TYPE:ASD-LFC-MY-20D42S-RGB-SMARTLIGHT:	
SPEC.:ASD-LFC-MY-20D42S-RGB-SMART-5000K	DIM.:	SERIAL No.:
MFR.: ASD Lighting Corp	SUR.: -0.491	Shielding Angle:

□cc	80%			70%			50%			30%			10%			0
□w	50%	30%	10%	50%	30%	10%	50%	30%	10%	50%	30%	10%	50%	30%	10%	0
□fc	20%			20%			20%			20%			20%			0
RCR	RCR:Room Cavity Ratio						Coefficients of Utilization(CU)									
0.0	1.15	1.15	1.15	1.11	1.11	1.11	1.03	1.03	1.03	.95	.95	.95	.88	.88	.88	.85
1.0	.98	.93	.89	.94	.90	.86	.87	.84	.80	.81	.78	.75	.75	.72	.70	.67
2.0	.85	.77	.71	.81	.75	.69	.75	.70	.65	.70	.65	.61	.64	.61	.58	.55
3.0	.74	.65	.58	.71	.63	.57	.66	.59	.54	.61	.55	.51	.56	.52	.48	.45
4.0	.65	.56	.49	.63	.54	.48	.58	.51	.45	.54	.48	.43	.50	.45	.41	.38
5.0	.58	.48	.42	.56	.47	.41	.52	.44	.39	.48	.42	.37	.45	.39	.35	.33
6.0	.52	.43	.36	.50	.41	.35	.47	.39	.34	.43	.37	.32	.40	.35	.31	.28
7.0	.47	.38	.32	.45	.37	.31	.42	.35	.30	.39	.33	.28	.37	.31	.27	.25
8.0	.42	.34	.28	.41	.33	.27	.39	.31	.26	.36	.30	.25	.34	.28	.24	.22
9.0	.39	.31	.25	.38	.30	.25	.35	.28	.24	.33	.27	.23	.31	.26	.22	.20
10.0	.36	.28	.23	.35	.27	.22	.33	.26	.21	.31	.25	.21	.29	.24	.20	.18



C Range: 0 - 360DEG
 C Interval: 22.5DEG
 Test Speed: HIGH
 Temperature:25.3DEG
 Operators:chen
 Test Date:2022-10-04

□ Range: 0 - 180DEG
 □ Interval: 1.0DEG
 Test System:EVERFINE GO-3000H_V1 SYSTEM V2.00.411
 Humidity:65.0%
 Test Distance:8.650m [K=1.0000]
 Remarks:

WEC AND CCEC

Test:U:120.03V I:0.3164A P:37.535W PF:0.9884 Freq:60.00Hz Lamp Flux:3287.57x1 lm		
NAME: ASD Lighting Corp	TYPE:ASD-LFC-MY-20D42S-RGB-SMART:	
SPEC.:ASD-LFC-MY-20D42S-RGB-SMART-5000K	DIM.:	SERIAL No.:
MFR.: ASD Lighting Corp	SUR.: -0.491	Shielding Angle:

<input type="checkbox"/> cc	80%			70%			50%			30%			10%			0
<input type="checkbox"/> w	50%	30%	10%	50%	30%	10%	50%	30%	10%	50%	30%	10%	50%	30%	10%	0
<input type="checkbox"/> fc	20%			20%			20%			20%			20%			0
RCR	RCR:Room Cavity Ratio						Wall Exitance Coefficients (WEC)									
0.0																
1.0	.349	.198	.063	.337	.192	.061	.315	.180	.058	.294	.170	.054	.275	.160	.051	
2.0	.312	.171	.052	.301	.166	.051	.281	.157	.049	.263	.148	.046	.246	.139	.044	
3.0	.282	.150	.045	.273	.146	.044	.254	.138	.042	.238	.130	.040	.222	.123	.038	
4.0	.257	.133	.039	.248	.130	.038	.232	.123	.037	.217	.116	.035	.202	.110	.034	
5.0	.235	.120	.035	.227	.117	.034	.212	.111	.033	.199	.105	.031	.186	.099	.030	
6.0	.217	.109	.031	.210	.106	.030	.196	.100	.029	.183	.095	.028	.172	.090	.027	
7.0	.201	.099	.028	.194	.097	.028	.182	.092	.026	.170	.087	.025	.159	.083	.024	
8.0	.187	.091	.026	.181	.089	.025	.169	.085	.024	.159	.080	.023	.149	.076	.022	
9.0	.174	.084	.024	.169	.082	.023	.159	.078	.022	.149	.075	.021	.139	.071	.020	
10.0	.164	.078	.022	.158	.077	.021	.149	.073	.021	.140	.069	.020	.131	.066	.019	

<input type="checkbox"/> cc	80%			70%			50%			30%			10%			0
<input type="checkbox"/> w	50%	30%	10%	50%	30%	10%	50%	30%	10%	50%	30%	10%	50%	30%	10%	0
<input type="checkbox"/> fc	20%			20%			20%			20%			20%			0
RCR	RCR:Room Cavity Ratio						Ceiling Cavity Exitance Coefficients (CCEC)									
0.0	.308	.308	.308	.263	.263	.263	.180	.180	.180	.103	.103	.103	.033	.033	.033	
1.0	.302	.275	.250	.258	.236	.215	.177	.162	.149	.102	.094	.087	.033	.030	.028	
2.0	.295	.251	.215	.252	.216	.186	.173	.150	.130	.100	.087	.076	.032	.028	.025	
3.0	.287	.235	.193	.246	.202	.167	.169	.141	.117	.098	.082	.069	.031	.027	.023	
4.0	.279	.222	.178	.240	.192	.155	.165	.134	.109	.095	.078	.064	.031	.025	.021	
5.0	.272	.212	.168	.234	.183	.146	.161	.128	.103	.093	.075	.061	.030	.025	.020	
6.0	.265	.204	.160	.228	.177	.140	.157	.124	.099	.091	.073	.059	.029	.024	.019	
7.0	.258	.197	.155	.222	.171	.135	.153	.120	.096	.089	.071	.057	.029	.023	.019	
8.0	.251	.192	.151	.216	.166	.131	.150	.117	.093	.087	.069	.056	.028	.023	.018	
9.0	.245	.187	.147	.211	.162	.129	.146	.114	.091	.085	.067	.054	.028	.022	.018	
10.0	.240	.183	.145	.207	.159	.126	.143	.112	.090	.084	.066	.054	.027	.022	.018	

C Range: 0 - 360DEG
 C Interval: 22.5DEG
 Test Speed: HIGH
 Temperature:25.3DEG
 Operators:chen
 Test Date:2022-10-04

Range: 0 - 180DEG
 Interval: 1.0DEG
 Test System:EVERFINE GO-3000H_V1 SYSTEM V2.00.411
 Humidity:65.0%
 Test Distance:8.650m [K=1.0000]
 Remarks:

UGR(Unified Glare Rating) Table

Test:U:120.03V I:0.3164A P:37.535W PF:0.9884 Freq:60.00Hz Lamp Flux:3287.57x1 lm										
NAME: ASD Lighting Corp					TYPE:ASD-LFC-MY-20D42S-RGB-SMARTIGHT:					
SPEC.:ASD-LFC-MY-20D42S-RGB-SMART-5000K					DIM.:			SERIAL No.:		
MFR.: ASD Lighting Corp					SUR.: -0.491			Shielding Angle:		
ceiling/cavity	0.7	0.7	0.5	0.5	0.3	0.7	0.7	0.5	0.5	0.3
walls	0.5	0.3	0.5	0.3	0.3	0.5	0.3	0.5	0.3	0.3
working plane	0.2	0.2	0.2	0.2	0.2	0.2	0.2	0.2	0.2	0.2
Room dimensions	Viewed crosswise					Viewed endwise				
x = 2H y = 2H	21.3	22.6	21.7	23.1	23.6	21.2	22.6	21.7	23.0	23.6
3H	23.2	24.4	23.7	24.9	25.5	23.1	24.4	23.6	24.8	25.4
4H	24.1	25.3	24.6	25.8	26.3	24.0	25.2	24.5	25.7	26.3
6H	24.9	26.0	25.5	26.6	27.2	24.8	26.0	25.4	26.5	27.1
8H	25.4	26.4	25.9	27.0	27.6	25.2	26.3	25.8	26.9	27.5
12H	25.8	26.9	26.4	27.4	28.0	25.7	26.7	26.3	27.3	27.9
4H 2H	21.9	23.1	22.4	23.6	24.2	21.9	23.1	22.4	23.6	24.2
3H	24.0	25.1	24.6	25.6	26.2	24.0	25.0	24.5	25.6	26.2
4H	25.1	26.0	25.7	26.6	27.2	25.0	25.9	25.6	26.5	27.2
6H	26.1	26.9	26.7	27.5	28.2	26.0	26.9	26.6	27.5	28.1
8H	26.6	27.4	27.2	28.0	28.7	26.5	27.3	27.1	27.9	28.6
12H	27.2	27.9	27.8	28.5	29.3	27.1	27.8	27.7	28.4	29.2
8H 4H	25.4	26.2	26.1	26.8	27.6	25.4	26.2	26.0	26.8	27.5
6H	26.7	27.4	27.4	28.0	28.8	26.6	27.3	27.3	27.9	28.7
8H	27.4	28.0	28.1	28.6	29.4	27.3	27.9	28.0	28.6	29.3
12H	28.2	28.7	28.9	29.4	30.2	28.1	28.6	28.8	29.3	30.1
12H 4H	25.5	26.2	26.1	26.9	27.6	25.4	26.2	26.1	26.8	27.5
6H	26.8	27.4	27.5	28.1	28.9	26.8	27.4	27.5	28.0	28.8
8H	27.6	28.1	28.3	28.8	29.6	27.5	28.0	28.2	28.7	29.5
Variations with the observer position at spacings:										
S = 1.0H	+ 0.1 / - 0.1					+ 0.1 / - 0.1				
1.5H	+ 0.2 / - 0.3					+ 0.2 / - 0.3				
2.0H	+ 0.2 / - 0.3					+ 0.2 / - 0.4				

CIE Pub.117, 3288 lm Total Lamp Luminous Flux Corrected (8log(F/F0) = 4.1)
 Area: 0.0602702 m2

C Range: 0 - 360DEG
 C Interval: 22.5DEG
 Test Speed: HIGH
 Temperature:25.3DEG
 Operators:chen
 Test Date:2022-10-04

Range: 0 - 180DEG
 Interval: 1.0DEG
 Test System:EVERFINE GO-3000H_V1 SYSTEM V2.00.411
 Humidity:65.0%
 Test Distance:8.650m [K=1.0000]
 Remarks:

UTILIZATION FACTORS TABLE

Test:U:120.03V I:0.3164A P:37.535W PF:0.9884 Freq:60.00Hz Lamp Flux:3287.57x1 lm		
NAME: ASD Lighting Corp	TYPE:ASD-LFC-MY-20D42S-RGB-SMART:	
SPEC.:ASD-LFC-MY-20D42S-RGB-SMART-5000K	DIM.:	SERIAL No.:
MFR.: ASD Lighting Corp	SUR.: -0.491	Shielding Angle:

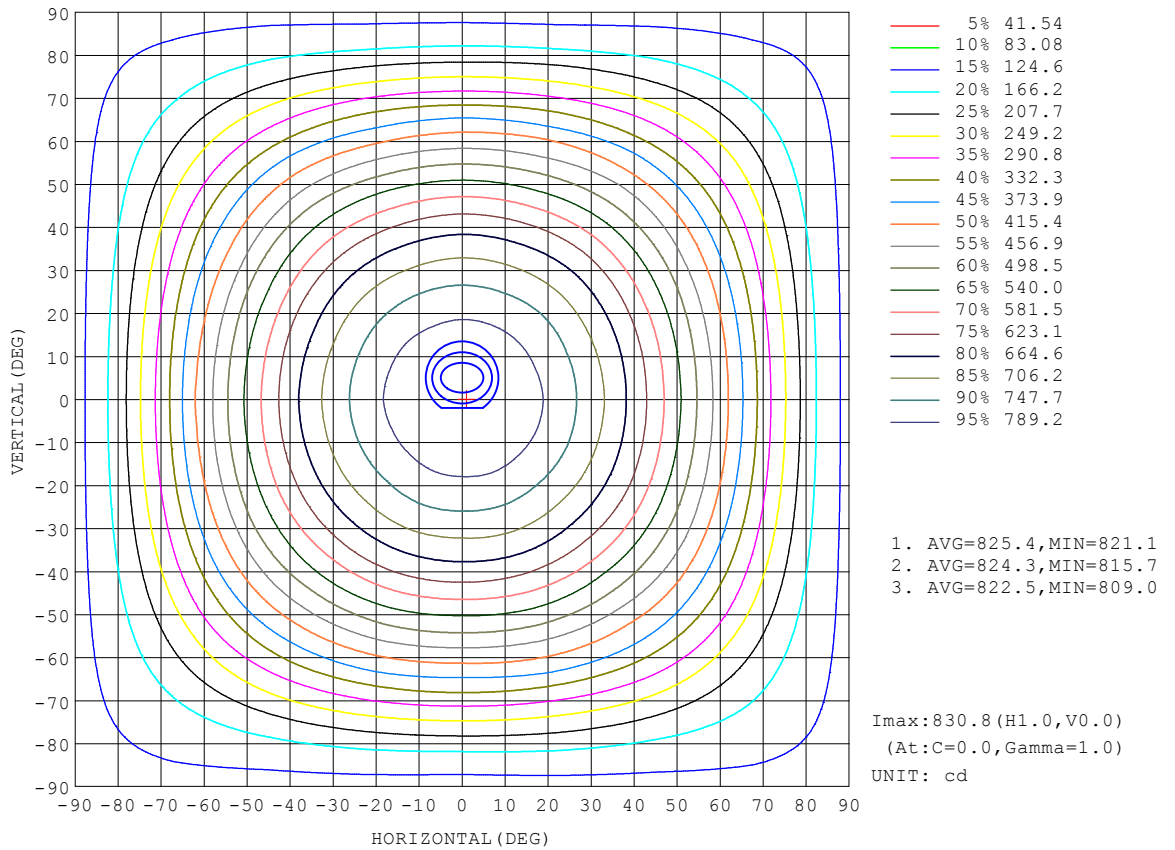
REFLECTANCE										
Ceiling	0.8	0.8	0.8	0.7	0.7	0.7	0.5	0.5	0.5	0
Walls	0.7	0.5	0.3	0.7	0.5	0.3	0.7	0.5	0.3	0
Working plane	0.2	0.2	0.2	0.2	0.2	0.2	0.2	0.2	0.2	0
ROOM INDEX	UTILIZATION FACTORS (PERCENT) $k(RI) \times RCR = 5$									
k = 0.60	50	38	31	49	38	31	47	37	30	24
0.80	60	47	40	58	47	39	56	45	38	31
1.00	68	56	48	66	55	47	62	55	46	37
1.25	75	63	55	73	62	54	68	59	53	43
1.50	80	69	61	77	67	60	73	64	58	48
2.00	87	77	70	84	75	68	79	71	65	54
2.50	91	82	75	88	80	73	82	75	70	58
3.00	95	87	80	92	84	78	85	79	74	62
4.00	100	92	87	96	90	84	89	84	80	66
5.00	102	96	91	98	93	88	91	87	83	69
ROOM INDEX	UF(total)									Direct
According to DIN EN 13032-2 2004			Suspended				SHRNOM = 1.25			

C Range: 0 - 360DEG
 C Interval: 22.5DEG
 Test Speed: HIGH
 Temperature:25.3DEG
 Operators:chen
 Test Date:2022-10-04

Range: 0 - 180DEG
 Interval: 1.0DEG
 Test System:EVERFINE GO-3000H_V1 SYSTEM V2.00.411
 Humidity:65.0%
 Test Distance:8.650m [K=1.0000]
 Remarks:

ISOCANDELA DIAGRAM

Test:U:120.03V I:0.3164A P:37.535W PF:0.9884 Freq:60.00Hz Lamp Flux:3287.57x1 lm		
NAME: ASD Lighting Corp	TYPE:ASD-LFC-MY-20D42S-RGB-SMARTLIGHT:	
SPEC.:ASD-LFC-MY-20D42S-RGB-SMART-5000K	DIM.:	SERIAL No.:
MFR.: ASD Lighting Corp	SUR.: -0.491	Shielding Angle:

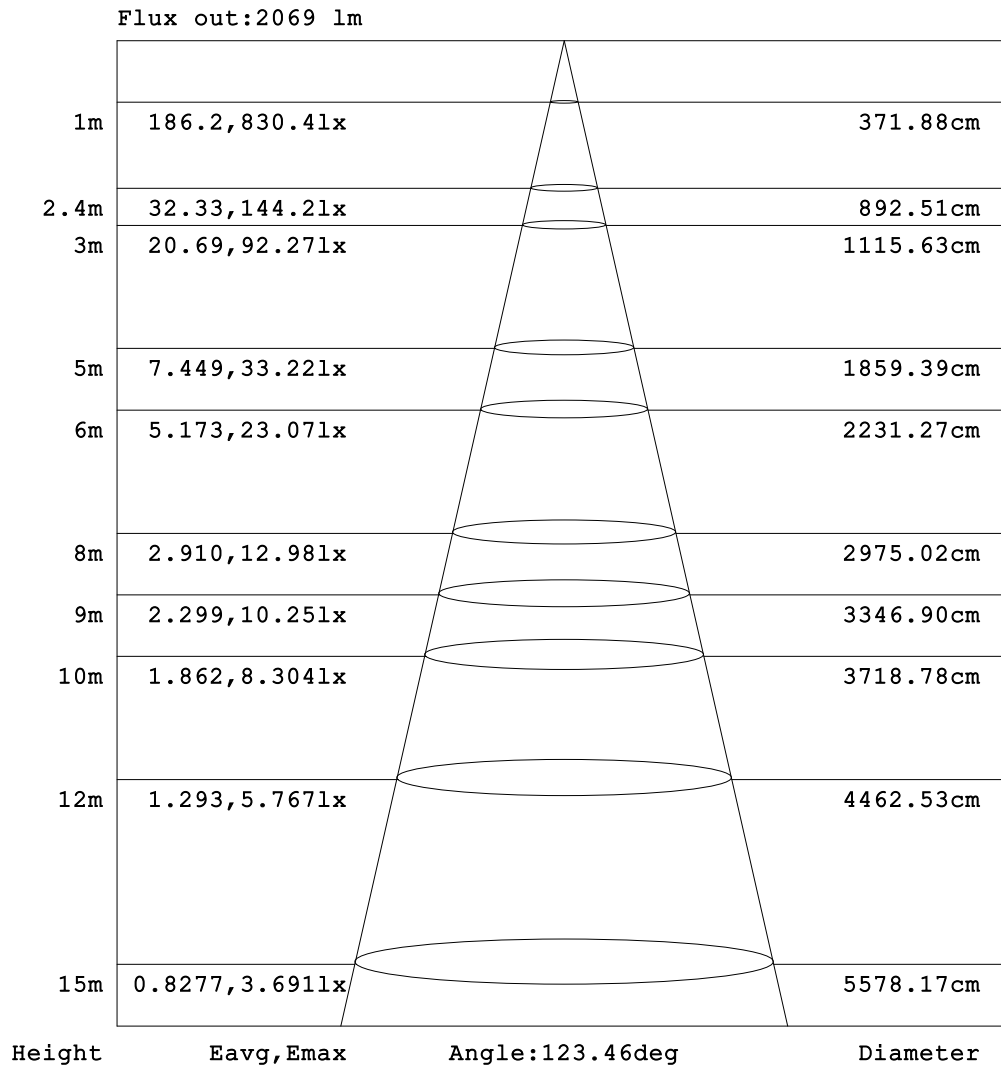


C Range: 0 - 360DEG
 C Interval: 22.5DEG
 Test Speed: HIGH
 Temperature:25.3DEG
 Operators:chen
 Test Date:2022-10-04

□ Range: 0 - 180DEG
 □ Interval: 1.0DEG
 Test System:EVERFINE GO-3000H_V1 SYSTEM V2.00.411
 Humidity:65.0%
 Test Distance:8.650m [K=1.0000]
 Remarks:

AAI Figure

Test:U:120.03V I:0.3164A P:37.535W PF:0.9884 Freq:60.00Hz Lamp Flux:3287.57x1 lm		
NAME: ASD Lighting Corp	TYPE:ASD-LFC-MY-20D42S-RGB-SMARTIGHT:	
SPEC.:ASD-LFC-MY-20D42S-RGB-SMART-5000K	DIM.:	SERIAL No.:
MFR.: ASD Lighting Corp	SUR.: -0.491	Shielding Angle:



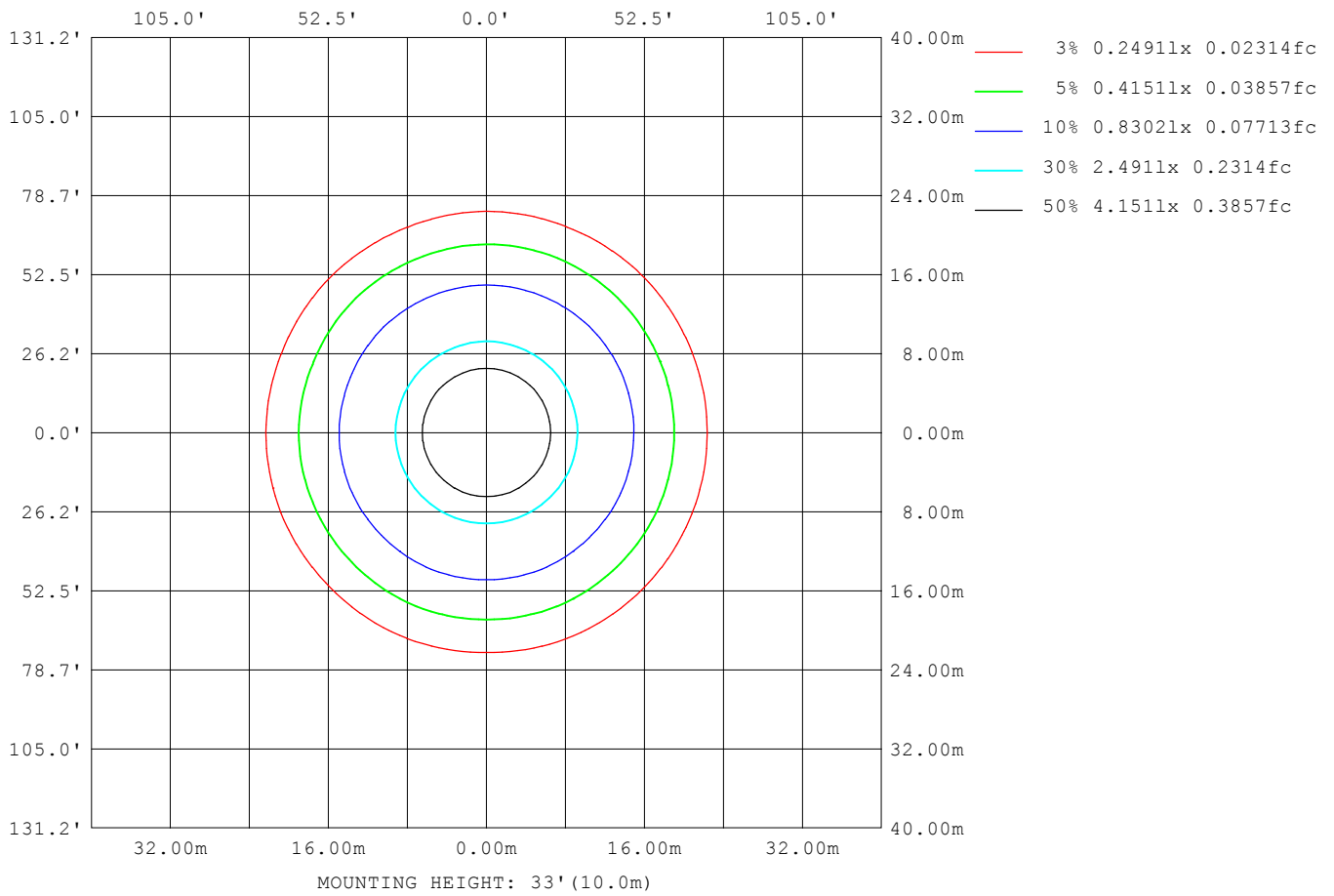
Note:The Curves indicate the illuminated area and the average illumination when the luminaire is at different distance.

C Range: 0 - 360DEG
 C Interval: 22.5DEG
 Test Speed: HIGH
 Temperature:25.3DEG
 Operators:chen
 Test Date:2022-10-04

Range: 0 - 180DEG
 Interval: 1.0DEG
 Test System:EVERFINE GO-3000H_V1 SYSTEM V2.00.411
 Humidity:65.0%
 Test Distance:8.650m [K=1.0000]
 Remarks:

ISOLUX DIAGRAM

Test:U:120.03V I:0.3164A P:37.535W PF:0.9884 Freq:60.00Hz Lamp Flux:3287.57x1 lm		
NAME: ASD Lighting Corp	TYPE:ASD-LFC-MY-20D42S-RGB-SMART:	
SPEC.:ASD-LFC-MY-20D42S-RGB-SMART-5000K	DIM.:	SERIAL No.:
MFR.: ASD Lighting Corp	SUR.: -0.491	Shielding Angle:



C Range: 0 - 360DEG
 C Interval: 22.5DEG
 Test Speed: HIGH
 Temperature:25.3DEG
 Operators:chen
 Test Date:2022-10-04

Range: 0 - 180DEG
 Interval: 1.0DEG
 Test System:EVERFINE GO-3000H_V1 SYSTEM V2.00.411
 Humidity:65.0%
 Test Distance:8.650m [K=1.0000]
 Remarks:

LED Avg.L Report

Test:U:120.03V I:0.3164A P:37.535W PF:0.9884 Freq:60.00Hz Lamp Flux:3287.57x1 lm		
NAME: ASD Lighting Corp	TYPE:ASD-LFC-MY-20D42S-RGB-SMARTIGHT:	
SPEC.:ASD-LFC-MY-20D42S-RGB-SMART-5000K	DIM.:	SERIAL No.:
MFR.: ASD Lighting Corp	SUR.: -0.491	Shielding Angle:

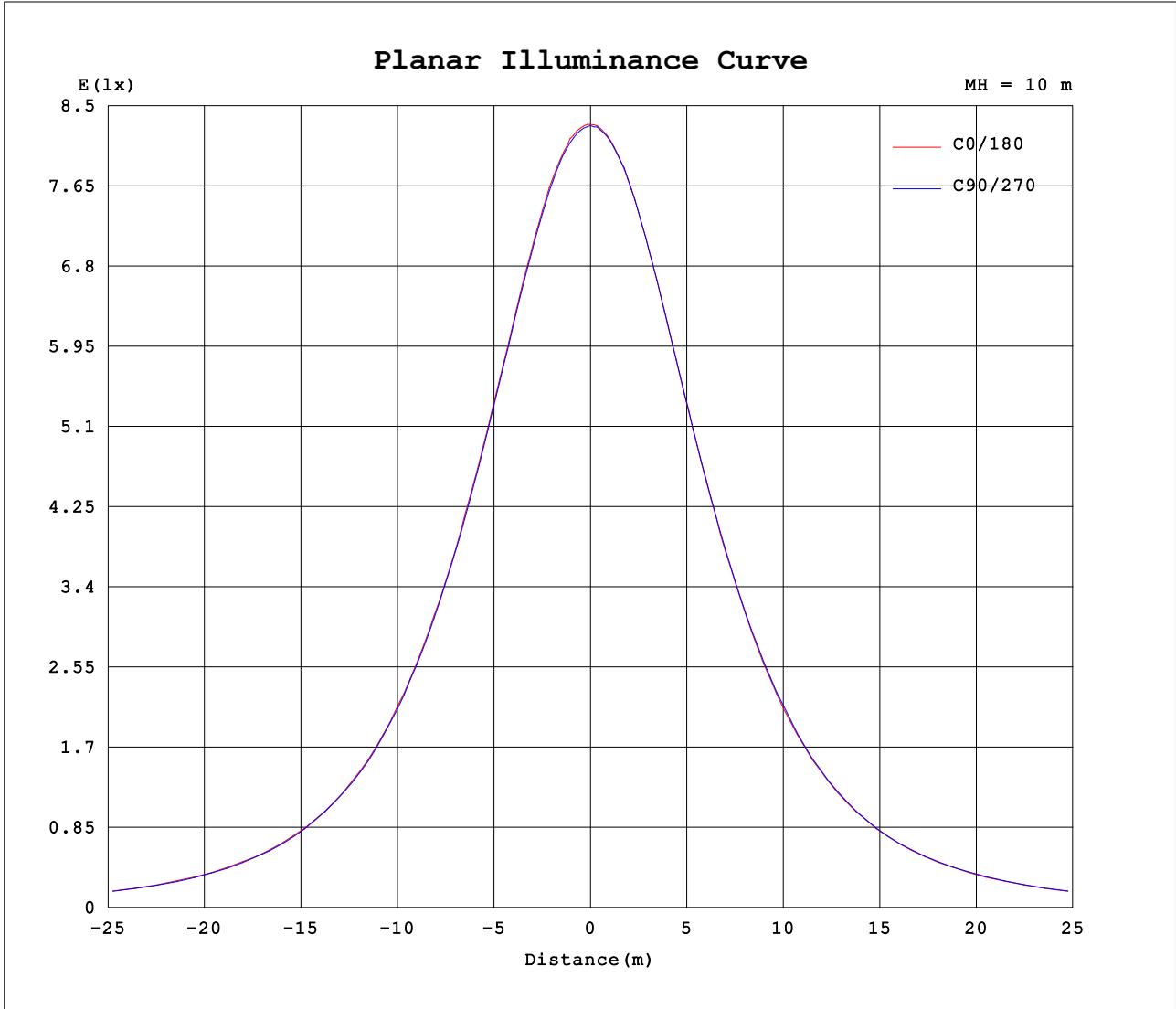
AvgL	cd/m2
L_0~180 (65) av	14766
L_0~180 (75) av	16036
L_0~180 (85) av	27204
L_90~270 (65) av	14696
L_90~270 (75) av	15873
L_90~270 (85) av	26713
L_45 (65) av	14768
L_45 (75) av	15897
L_45 (85) av	26967

Standard: GB/T 29293-2012

C Range: 0 - 360DEG
 C Interval: 22.5DEG
 Test Speed: HIGH
 Temperature:25.3DEG
 Operators:chen
 Test Date:2022-10-04

Range: 0 - 180DEG
 Interval: 1.0DEG
 Test System:EVERFINE GO-3000H_V1 SYSTEM V2.00.411
 Humidity:65.0%
 Test Distance:8.650m [K=1.0000]
 Remarks:

Planar Illuminance Curve



C Range: 0 - 360DEG
 C Interval: 22.5DEG
 Test Speed: HIGH
 Temperature:25.3DEG
 Operators:chen
 Test Date:2022-10-04

Range: 0 - 180DEG
 Interval: 1.0DEG
 Test System:EVERFINE GO-3000H_V1 SYSTEM V2.00.411
 Humidity:65.0%
 Test Distance:8.650m [K=1.0000]
 Remarks:

LUMINOUS DISTRIBUTION INTENSITY DATA

Test:U:120.03V I:0.3164A P:37.535W PF:0.9884 Freq:60.00Hz Lamp Flux:3287.57x1 lm		
NAME: ASD Lighting Corp	TYPE:ASD-LFC-MY-20D42S-RGB-SMARTIGHT:	
SPEC.:ASD-LFC-MY-20D42S-RGB-SMART-5000K	DIM.:	SERIAL No.:
MFR.: ASD Lighting Corp	SUR.: -0.491	Shielding Angle:

Table--1

UNIT: cd

C (DEG) □ (DEG)	0	22.5	45	67.5	90	112.5	135	157.5	180	202.5	225	247.5	270	292.5	315	337.5			
0	830	830	830	830	829	829	828	828	830	830	830	830	829	829	828	828			
5	828	827	827	827	825	826	825	826	828	827	827	828	827	826	826	827			
10	820	819	818	818	817	817	816	816	819	819	819	818	821	818	819	818			
15	805	804	803	803	801	801	800	800	803	802	803	803	803	802	804	803			
20	783	784	783	782	780	780	778	779	781	780	782	781	782	782	783	782			
25	757	759	756	755	753	754	751	753	755	753	756	755	757	756	757	756			
30	726	726	724	724	722	722	720	723	724	724	724	723	726	725	729	725			
35	690	690	687	689	687	686	684	685	687	686	688	689	692	689	691	689			
40	649	650	646	648	644	648	644	645	646	646	646	646	650	650	653	649			
45	604	602	599	599	596	599	597	597	599	598	600	599	607	604	607	604			
50	548	548	543	549	543	545	546	546	548	544	549	549	551	549	551	548			
55	494	495	490	494	491	493	489	494	493	488	492	492	495	494	496	495			
60	436	436	435	436	432	434	433	435	435	431	435	433	439	438	442	441			
65	378	378	377	376	370	374	373	374	374	372	374	372	379	375	381	377			
70	313	314	312	310	311	307	308	309	307	308	307	311	311	315	313	317			
75	253	249	249	246	246	246	246	244	247	246	247	247	249	248	250	252			
80	192	192	190	190	187	187	186	188	190	187	188	188	189	189	191	191			
85	143	144	142	144	139	140	139	141	143	140	143	140	141	140	143	141			
90	114	115	113	113	111	112	111	114	113	113	113	111	113	111	112	112			
95	100	100	98.7	98.7	98.4	98.6	98.0	99.7	100	99.5	99.1	98.0	98.4	97.8	98.5	98.8			
100	96.4	95.0	93.8	94.0	93.9	94.4	94.1	95.4	95.3	94.2	93.6	94.3	94.8	94.3	94.3	95.4			
105	96.0	94.1	92.4	92.6	93.0	93.2	92.2	94.1	94.5	92.9	91.2	92.5	93.6	93.5	93.1	94.1			
110	95.4	91.7	90.5	91.3	91.4	90.6	90.0	91.5	93.7	89.9	89.1	89.9	91.7	91.9	91.4	92.5			
115	88.7	86.1	88.0	88.9	88.9	87.1	88.0	85.8	87.5	83.5	86.9	86.5	89.0	89.4	88.8	87.3			
120	84.4	81.9	84.1	85.2	85.6	83.1	85.1	82.1	81.9	79.5	84.3	83.1	85.7	85.1	85.1	82.6			
125	82.5	77.9	79.7	79.2	80.5	78.4	79.1	77.8	79.7	75.4	79.8	78.9	80.6	79.1	80.5	78.5			
130	79.5	73.3	71.7	72.6	73.5	73.0	70.8	73.0	76.6	71.0	71.5	73.3	74.5	72.9	72.7	73.5			
135	75.7	68.1	65.2	67.0	68.9	66.4	64.2	66.8	72.3	65.7	64.7	66.3	69.0	66.4	64.8	67.7			
140	72.5	63.9	61.6	61.1	66.3	60.3	60.9	62.5	69.3	61.4	60.4	59.6	65.6	61.5	60.9	63.6			
145	70.2	63.6	60.6	59.2	63.0	58.9	59.7	61.5	66.9	60.1	58.5	56.9	62.6	58.1	60.1	62.5			
150	67.4	63.2	59.8	58.1	60.6	58.3	59.4	60.2	64.5	59.7	58.4	56.8	59.9	57.4	59.0	61.8			
155	65.4	62.6	59.9	57.8	58.4	57.8	58.2	57.2	62.2	58.3	57.9	57.4	58.3	56.8	59.5	61.4			
160	65.3	63.5	60.4	57.5	57.9	57.9	57.8	57.3	61.1	57.3	56.8	59.0	57.9	55.9	58.5	62.0			
165	65.8	64.6	60.8	57.2	58.0	57.9	57.2	57.3	60.3	56.1	57.2	59.3	58.2	55.6	58.0	61.8			
170	68.7	68.5	66.6	60.5	63.0	64.0	64.8	62.0	64.7	62.0	64.6	64.8	61.9	60.1	64.2	66.4			
175	70.7	69.9	65.5	64.8	69.2	69.3	65.3	66.0	69.7	65.2	64.4	69.0	68.4	64.5	65.0	69.7			
180	72.9	69.3	68.5	69.2	73.3	69.5	68.9	69.5	72.9	69.3	68.5	69.2	73.4	69.5	68.9	69.5			

C Range: 0 - 360DEG
 C Interval: 22.5DEG
 Test Speed: HIGH
 Temperature:25.3DEG
 Operators:chen
 Test Date:2022-10-04

□ Range: 0 - 180DEG
 □ Interval: 1.0DEG
 Test System:EVERFINE GO-3000H_V1 SYSTEM V2.00.411
 Humidity:65.0%
 Test Distance:8.650m [K=1.0000]
 Remarks: