



LED VANITY LINEAR

LVF21 series

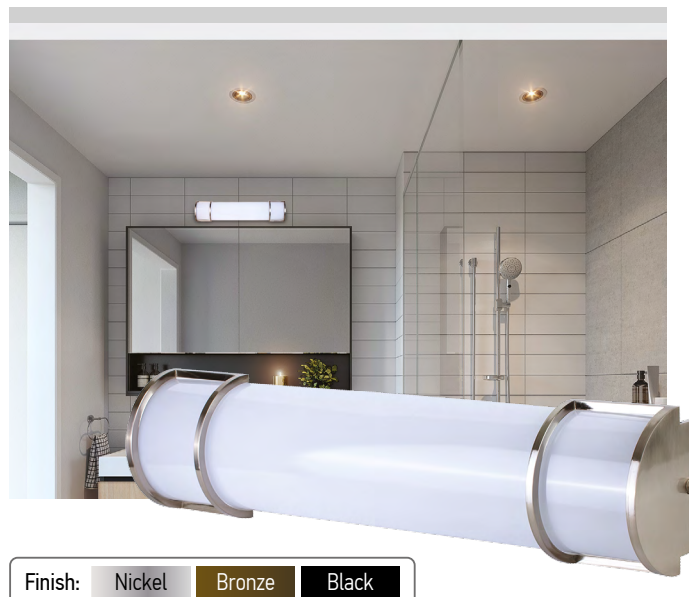
► **DESIGN** - LED VANITY LINEAR has a sleek, modern design that allows you to have a stylish look with efficient lighting. Durable housing resistant to rust and impact provides many years of service. The acrylic lens with a 130° beam angle grants you even light distribution. It is designed to operate on 120V circuits.

► **COLOR SELECTABLE** - You can choose either a 3,000K warm white, 4,000K cool white or 5,000K daylight color temperature.

► **DIMMING** - Smooth triac dimming capabilities ranging from 10% to 100% with modern LED dimmers allow you to control the look and feel of your space.

► **APPLICATION** - This fixture creates a bright light that is perfect for bathroom spaces or any other common areas. It is also Damp Locations rated. Can be installed vertically and horizontally.

► **ADVANTAGES** - With a lifespan of 50,000 hours, these fixtures are made to last decades under normal operation! ASD provides a 5-year limited warranty along with ETL certification to guarantee top quality products and safety!



Finish: Nickel Bronze Black

PRODUCT PRESENTATION:

Model	Size	Power	Voltage	Dimming	Lumens	CCT	Finish	Dimensions	Certification
ASD-LVF21-18D20CC-NK	18 inch	20W	120 V	TRIAC	up to 1,620 lm	3CCT (3,000/4,000/5,000 K)	Nickel	19-1/8" x 5-7/8" x 4"	ETL (4001256)
ASD-LVF21-18D20CC-NK-2PACK	18 inch	20W	120 V	TRIAC	up to 1,620 lm	3CCT (3,000/4,000/5,000 K)	Brushed Nickel	19-1/8" x 5-7/8" x 4"	ETL (4001256)
ASD-LVF21-MV-18D20NK	18 inch	20W	120-277 V	TRIAC	up to 2,259 lm	3CCT (3,000/4,000/5,000 K)	Nickel	19-1/8" x 5-7/8" x 4"	ETL (4001256)
ASD-LVF21-18D20CC-BZ	18 inch	20W	120 V	TRIAC	up to 1,620 lm	3CCT (3,000/4,000/5,000 K)	Oil rubbed bronze	19-1/8" x 5-7/8" x 4"	ETL (4001256)
ASD-LVF21-18D20CC-BK	18 inch	20W	120 V	TRIAC	up to 1,620 lm	3CCT (3,000/4,000/5,000 K)	Black	19-1/8" x 5-7/8" x 4"	ETL (4001256)
ASD-LVF21-24D25CC-NK	24 inch	25W	120 V	TRIAC	up to 1,950 lm	3CCT (3,000/4,000/5,000 K)	Nickel	25-9/16" x 5-7/8" x 4"	ETL (4001256)
ASD-LVF21-MV-24D25NK	24 inch	25W	120-277 V	TRIAC	up to 2,598 lm	3CCT (3,000/4,000/5,000 K)	Nickel	25-9/16" x 5-7/8" x 4"	ETL (4001256)
ASD-LVF21-24D25CC-NK-2PACK	24 inch	25W	120 V	TRIAC	up to 1,950 lm	3CCT (3,000/4,000/5,000 K)	Nickel	25-9/16" x 5-7/8" x 4"	ETL (4001256)
ASD-LVF21-24D25CC-BK	24 inch	25W	120 V	TRIAC	up to 1,950 lm	3CCT (3,000/4,000/5,000 K)	Black	25-9/16" x 5-7/8" x 4"	ETL (4001256)
ASD-LVF21-36D30CC-NK	36 inch	30W	120 V	TRIAC	up to 2,640 lm	3CCT (3,000/4,000/5,000 K)	Nickel	37-3/16" x 5-7/8" x 4"	ETL (4001256)
ASD-LVF21-36D30CC-BK	36 inch	30W	120 V	TRIAC	up to 2,640 lm	3CCT (3,000/4,000/5,000 K)	Black	37-3/16" x 5-7/8" x 4"	ETL (4001256)
ASD-LVF21-48D35CC-NK	48 inch	35W	120 V	TRIAC	up to 3,205 lm	3CCT (3,000/4,000/5,000 K)	Nickel	49" x 5-7/8" x 4"	ETL (4001256)
ASD-LVF21-48D35CC-BK	48 inch	35W	120 V	TRIAC	up to 3,205 lm	3CCT (3,000/4,000/5,000 K)	Black	49" x 5-7/8" x 4"	ETL (4001256)

For most up-to-date spec sheets please refer to asd-lighting.com

ASD LIGHTING CORP

E-mail: orders@asd-lighting.com | Web site: www.asd-lighting.com





LED VANITY LINEAR

LVF21 series

TECHNICAL PARAMETERS:

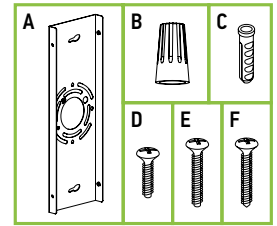
Model	Work environment	Operating temperature	Power factor	Surge protection	Housing	Lens	CRI
ASD-LVF21-18D20CC-NK	Damp location	-40°F to 122°F (-40°C to 50°C)	> 0.9	1kV	Steel	Acrylic	>80
ASD-LVF21-18D20CC-NK-2PACK	Damp location	-40°F to 122°F (-40°C to 50°C)	> 0.9	1kV	Steel	Acrylic	>80
ASD-LVF21-MV-18D20NK	Damp location	-40°F to 122°F (-40°C to 50°C)	> 0.9	1kV	Steel	Acrylic	>80
ASD-LVF21-18D20CC-BZ	Damp location	-40°F to 122°F (-40°C to 50°C)	> 0.9	1kV	Steel	Acrylic	>80
ASD-LVF21-18D20CC-BK	Damp location	-40°F to 122°F (-40°C to 50°C)	> 0.9	1kV	Steel	Acrylic	>80
ASD-LVF21-24D25CC-NK	Damp location	-40°F to 122°F (-40°C to 50°C)	> 0.9	1kV	Steel	Acrylic	>80
ASD-LVF21-MV-24D25NK	Damp location	-40°F to 122°F (-40°C to 50°C)	> 0.9	1kV	Steel	Acrylic	>80
ASD-LVF21-24D25CC-NK-2PACK	Damp location	-40°F to 122°F (-40°C to 50°C)	> 0.9	1kV	Steel	Acrylic	>80
ASD-LVF21-24D25CC-BK	Damp location	-40°F to 122°F (-40°C to 50°C)	> 0.9	1kV	Steel	Acrylic	>80
ASD-LVF21-36D30CC-NK	Damp location	-40°F to 122°F (-40°C to 50°C)	> 0.9	1kV	Steel	Acrylic	>80
ASD-LVF21-36D30CC-BK	Damp location	-40°F to 122°F (-40°C to 50°C)	> 0.9	1kV	Steel	Acrylic	>80
ASD-LVF21-48D35CC-NK	Damp location	-40°F to 122°F (-40°C to 50°C)	> 0.9	1kV	Steel	Acrylic	>80
ASD-LVF21-48D35CC-BK	Damp location	-40°F to 122°F (-40°C to 50°C)	> 0.9	1kV	Steel	Acrylic	>80

DIMMING COMPATIBLE CONTROLS:

Brand	Lutron	Leviton
Models	MACL-153MLH-WH	R02-DW6HD-2RW
	STCL-153PH-WH	R00-RNL06-0TW
	PD-6WCL-WH-R	R68-06674-POT
	DVCL-153PR	DSL06
	P-PKG1W	

PACKAGE CONTENTS:

Description	Quantity
LED Vanity Linear	1 (2 for 2 pack)
Mounting plate (A)	1
Wire nut (B)	3
Anchor (C)	2
Fixture screw (D)	4
Mounting screw (E)	2
Self-tapping screw (F)	2
Box	1



INSTALLATION GUIDE

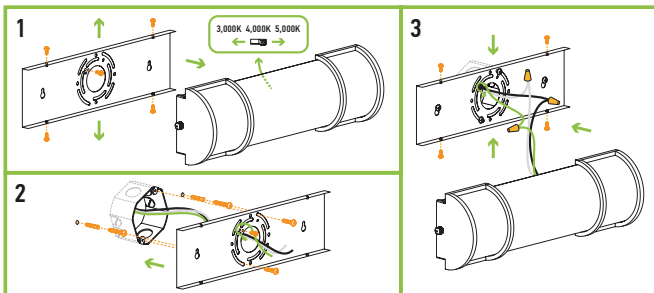
IMPORTANT SAFETY INFORMATION:

Please read all the instructions below before installation.

- Make sure that the supply voltage corresponds to the rated product voltage.
- The product must be installed by a qualified electrician in accordance with the National Electrical Code and corresponding local codes.
- If the product is damaged, do not use it.

INSTALLATION STEPS:

- Detach the fixture body from the back plate. Choose needed color temperature by adjusting the switch position on the back of the fixture.
- Place the back plate against the wall covering the outlet box, mark placement of the mounting keyhole slots and drill appropriate sized holes for wall anchors. Attach the back plate to the wall with two outlet box screws and two anchor screws.
- Connect the wires: Black to Black, White to White, Green to Green. Secure the connection with wire nuts. Attach the fixture body to the back plate using four small screws.



⚠ WARNING

RISK OF PERSONAL INJURY – READ and follow all WARNINGS and installation instructions. Keep or give to the owner for future reference.

Risk of cuts: Wear gloves to prevent cuts or abrasions when removing from carton, handling, installing, and maintaining this product.

Risk of electric shock: This product must be installed in accordance with the applicable installation code by a person familiar with the construction and operation of the product and the hazards involved.

Risk of Fire: Minimum 194°F supply conductors. Consult a qualified electrician to ensure correct branch circuit conductor.

ASD® assumes no responsibility for claims arising out of improper or careless installation or handling of this product.

For most up-to-date spec sheets please refer to asd-lighting.com

ASD LIGHTING CORP

E-mail: orders@asd-lighting.com | Web site: www.asd-lighting.com





LED VANITY LINEAR

LVF21 series

ORDERING INFORMATION

Model	Product dimensions	Weight	Pcs. (pack) per carton	Carton size	Carton weight	UPC	GTIN 14
ASD-LVF21-18D20CC-NK	19-1/8" x 5-7/8" x 4"	4.0 lbs(1.8kg)	4	20.50" x 16.30" x 12.60"	23.0 lbs	81920102821	30819201028215
ASD-LVF21-18D20CC-NK-2PACK	19-1/8" x 5-7/8" x 4"	7.9 lbs(3.6kg)	4 (2)	20.47" x 15.35" x 12.60"	19.8 lbs	81005073429	10810050734292
ASD-LVF21-MV-18D20NK	19-1/8" x 5-7/8" x 4"	4.0 lbs(1.8kg)	4	20.47" x 16.34" x 12.60"	23.0 lbs	81012811393	10810128113936
ASD-LVF21-18D20CC-BZ	19-1/8" x 5-7/8" x 4"	3.9 lbs(1.8kg)	4	20.98" x 17.01" x 13.23"	21.0 lbs	81920102822	20819201028225
ASD-LVF21-18D20CC-BK	19-1/8" x 5-7/8" x 4"	4.0 lbs(1.8kg)	4	20.47" x 16.34" x 12.60"	23.0 lbs	81012811210	10810128112106
ASD-LVF21-24D25CC-NK	25-9/16" x 5-7/8" x 4"	4.6 lbs(2.1kg)	4	27.20" x 16.30" x 12.60"	24.2 lbs	81920102823	30819201028239
ASD-LVF21-MV-24D25NK	25-9/16" x 5-7/8" x 4"	4.6 lbs(2.1kg)	4	27.17" x 16.34" x 12.60"	24.2 lbs	81012811394	10810128113943
ASD-LVF21-24D25CC-NK-2PACK	25-9/16" x 5-7/8" x 4"	9.3 lbs(4.2kg)	4 (2)	27.20" x 8.50" x 12.60"	12.3 lbs	81005073366	
ASD-LVF21-24D25CC-BK	25-9/16" x 5-7/8" x 4"	4.6 lbs(2.1kg)	4	27.17" x 16.34" x 12.60"	24.2 lbs	81012811211	10810128112113
ASD-LVF21-36D30CC-NK	37-3/16" x 5-7/8" x 4"	6.3 lbs(2.9kg)	2	38.78" x 8.46" x 12.60"	16.4 lbs	81005073189	30810050731899
ASD-LVF21-36D30CC-BK	37-3/16" x 5-7/8" x 4"	6.3 lbs(2.9kg)	2	38.78" x 8.46" x 12.60"	16.4 lbs	81012811212	20810128112127
ASD-LVF21-48D35CC-NK	49" x 5-7/8" x 4"	8.0 lbs(3.6kg)	2	50.59" x 8.46" x 12.60"	20.7 lbs	81005073283	10810050732830
ASD-LVF21-48D35CC-BK	49" x 5-7/8" x 4"	8.0 lbs(3.6kg)	2	50.59" x 8.46" x 12.60"	20.7 lbs	81012811936	10810128119365

For most up-to-date spec sheets please refer to asd-lighting.com

ASD LIGHTING CORP

E-mail: orders@asd-lighting.com | Web site: www.asd-lighting.com

