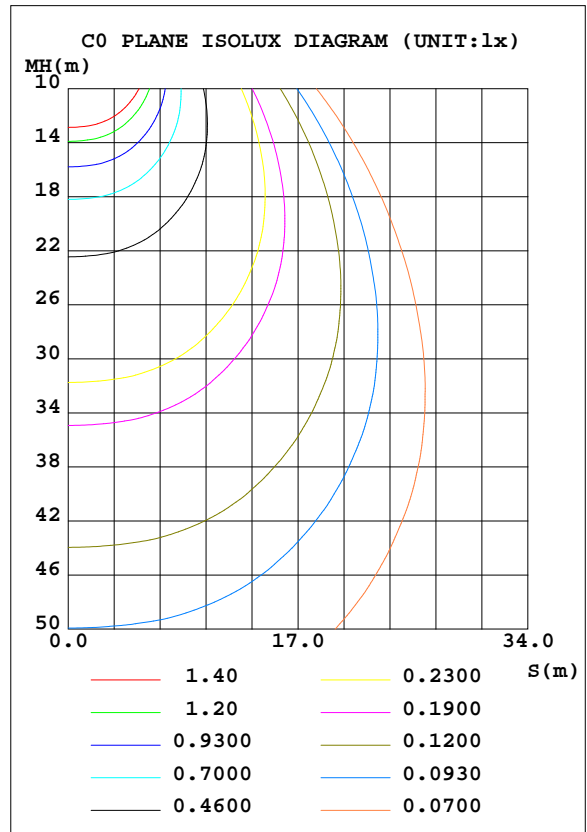
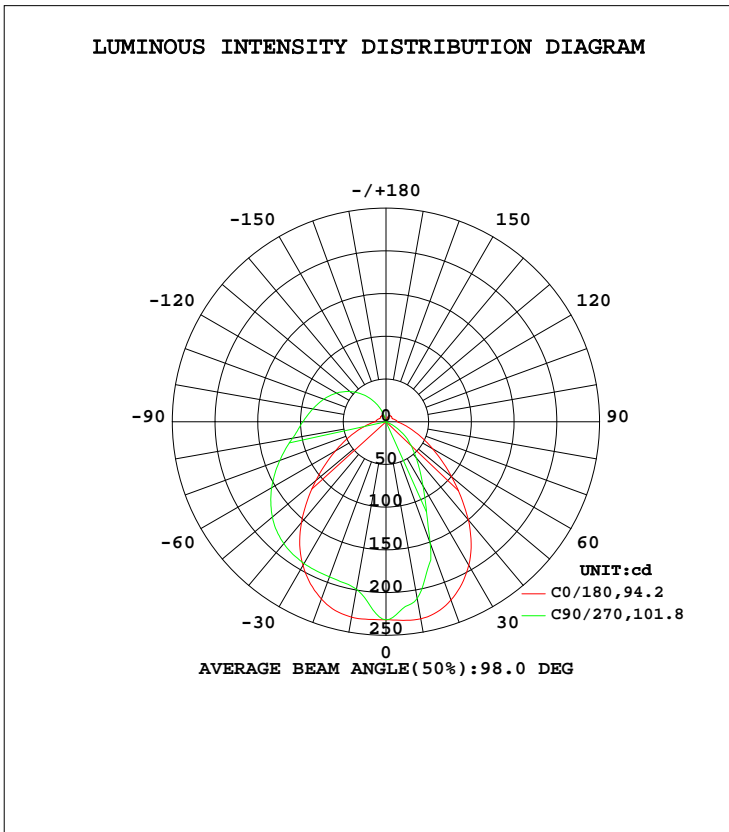


LUMINAIRE PHOTOMETRIC TEST REPORT

Test:U:120.0V I:0.1312A P:15.45W PF:0.9812 Lamp Flux:787.284x1 lm		
NAME: LED luminaires	TYPE:N/A	WEIGHT:N/A
SPEC.:ASD-LVF24M-3D15CC-BK 5000K	DIM.: N/A	SERIAL No.:N/A
MFR.: ASD Lighting corp	SUR.:N/A	Shielding Angle:N/A

DATA OF LAMP		PHOTOMETRIC DATA Eff: 50.96 lm/W			
MODEL	PSZ2GH221125002-10	I _{max} (cd)	234.3	S/MH(C0/180)	1.24
NOMINAL POWER(W)		LOR(%)	100.0	S/MH(C90/270)	0.77
RATED VOLTAGE(V)	120	TOTAL FLUX(lm)	787.28	η UP, DN(C0-180)	18.8,56.2
NOMINAL FLUX(lm)	787.284	CIE CLASS	SEMI-D.	η UP, DN(C180-360)	1.2,23.8
LAMPS INSIDE	1	η up(%)	20.0	CIBSE SHR NOM	1.25
TEST VOLTAGE(V)	120	η down(%)	80.0	CIBSE SHR MAX	1.25



C Range: 0 - 360DEG
 C Interval: 22.5DEG
 Test Speed: HIGH
 Temperature:25.1DEG
 Operators:Evan
 Test Date:2022-11-29

γ Range: 0 - 180DEG
 γ Interval: 1.0DEG
 Test System:EVERFINE GO-R5000_V2 SYSTEM V2.0.351
 Humidity:42%
 Test Distance:2.532m [K=1.0000]
 Remarks:

ZONAL FLUX DIAGRAM

ZONAL FLUX DIAGRAM:

γ	C0	C45	C90	C135	C180	C225	C270	C315	γ	Φ zone	Φ total	%lum, lamp
10	232.2	208.4	199.2	209.9	234.2	219.1	210.1	216.5	0- 10	21.17	21.17	2.69,2.69
20	220.8	198.0	193.3	198.0	222.2	188.9	151.3	189.8	10- 20	58.08	79.25	10.1,10.1
30	194.2	192.1	191.6	191.2	193.9	131.8	86.65	134.6	20- 30	82.79	162.0	20.6,20.6
40	154.1	183.8	186.1	182.1	150.1	81.02	55.00	83.53	30- 40	94.60	256.6	32.6,32.6
50	107.1	171.7	173.5	169.4	100.4	50.25	34.17	51.82	40- 50	96.13	352.8	44.8,44.8
60	68.42	155.2	154.5	152.8	62.89	29.27	13.66	30.31	50- 60	88.82	441.6	56.1,56.1
70	40.83	135.5	132.3	133.3	37.06	7.964	0.1036	8.837	60- 70	75.77	517.4	65.7,65.7
80	22.63	114.7	111.0	112.7	21.83	2.139	0.1320	1.175	70- 80	61.89	579.2	73.6,73.6
90	12.54	98.14	97.36	97.26	13.74	1.189	0.1774	0.7366	80- 90	50.77	630.0	80,80
100	11.21	85.44	87.03	84.73	11.66	1.007	0.1964	0.7092	90-100	43.36	673.4	85.5,85.5
110	9.616	73.03	77.56	72.48	9.569	0.6509	0.1581	0.5283	100-110	36.42	709.8	90.2,90.2
120	8.186	60.11	67.27	59.66	8.224	0.3783	0.1318	0.2680	110-120	29.07	738.9	93.9,93.9
130	8.582	47.05	55.19	46.66	8.842	0.1221	0.1324	0.1350	120-130	21.47	760.3	96.6,96.6
140	8.820	33.34	41.47	33.05	8.895	0.2585	0.1324	0.1802	130-140	14.36	774.7	98.4,98.4
150	8.532	19.49	26.47	19.25	8.438	0.9317	0.1563	0.5716	140-150	8.162	782.9	99.4,99.4
160	6.324	6.729	11.35	6.626	5.754	2.489	0.2151	0.5805	150-160	3.554	786.4	99.9,99.9
170	1.405	1.384	0.4963	1.206	0.9853	0.7687	0.2487	0.2789	160-170	0.8108	787.2	100,100
180	0.3162	0.3437	0.3525	0.3509	0.3304	0.3301	0.3474	0.3528	170-180	0.0544	787.3	100,100
DEG	LUMINOUS INTENSITY:cd									UNIT:lm		

Conical surface Flux(90deg): 305.18 lm

%lum = 38.8%
%lamp = 38.8%

Conical surface Flux(120deg): 441.59 lm

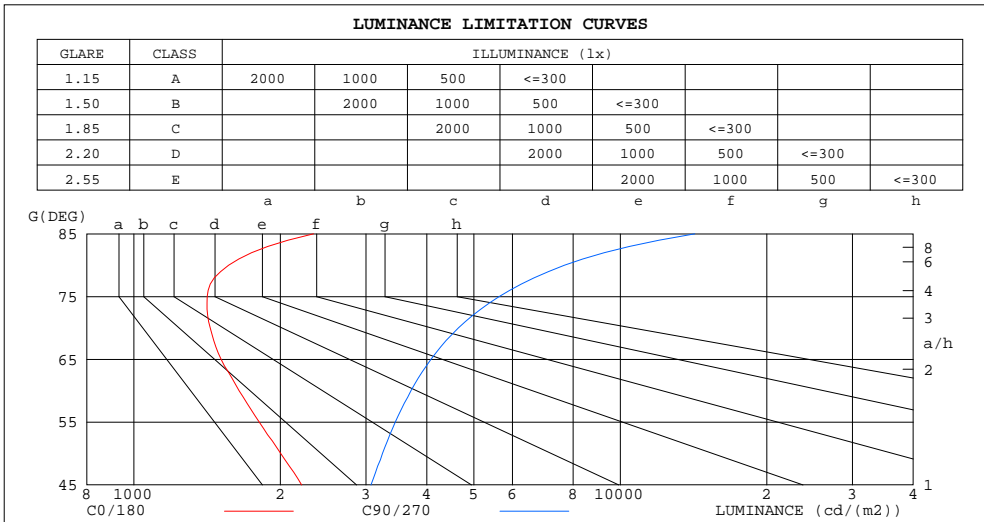
%lum = 56.1%
%lamp = 56.1%

C Range: 0 - 360DEG
C Interval: 22.5DEG
Test Speed: HIGH
Temperature:25.1DEG
Operators:Evan
Test Date:2022-11-29

γ Range: 0 - 180DEG
γ Interval: 1.0DEG
Test System:EVERFINE GO-R5000_V2 SYSTEM V2.0.351
Humidity:42%
Test Distance:2.532m [K=1.0000]
Remarks:

LUMINANCE LIMITATION CURVES

Test:U:120.0V I:0.1312A P:15.45W PF:0.9812 Lamp Flux:787.284x1 lm		
NAME: LED luminaires	TYPE:N/A	WEIGHT:N/A
SPEC.:ASD-LVF24M-3D15CC-BK 5000K	DIM.: N/A	SERIAL No.:N/A
MFR.: ASD Lighting corp	SUR.:N/A	Shielding Angle:N/A



LUMINANCE cd/(m2)		
G (DEG)	C0/180	C90/270
85	2340	14230
80	1566	7678
75	1415	5635
70	1435	4646
65	1512	4081
60	1645	3711
55	1810	3446
50	2003	3243
45	2213	3072

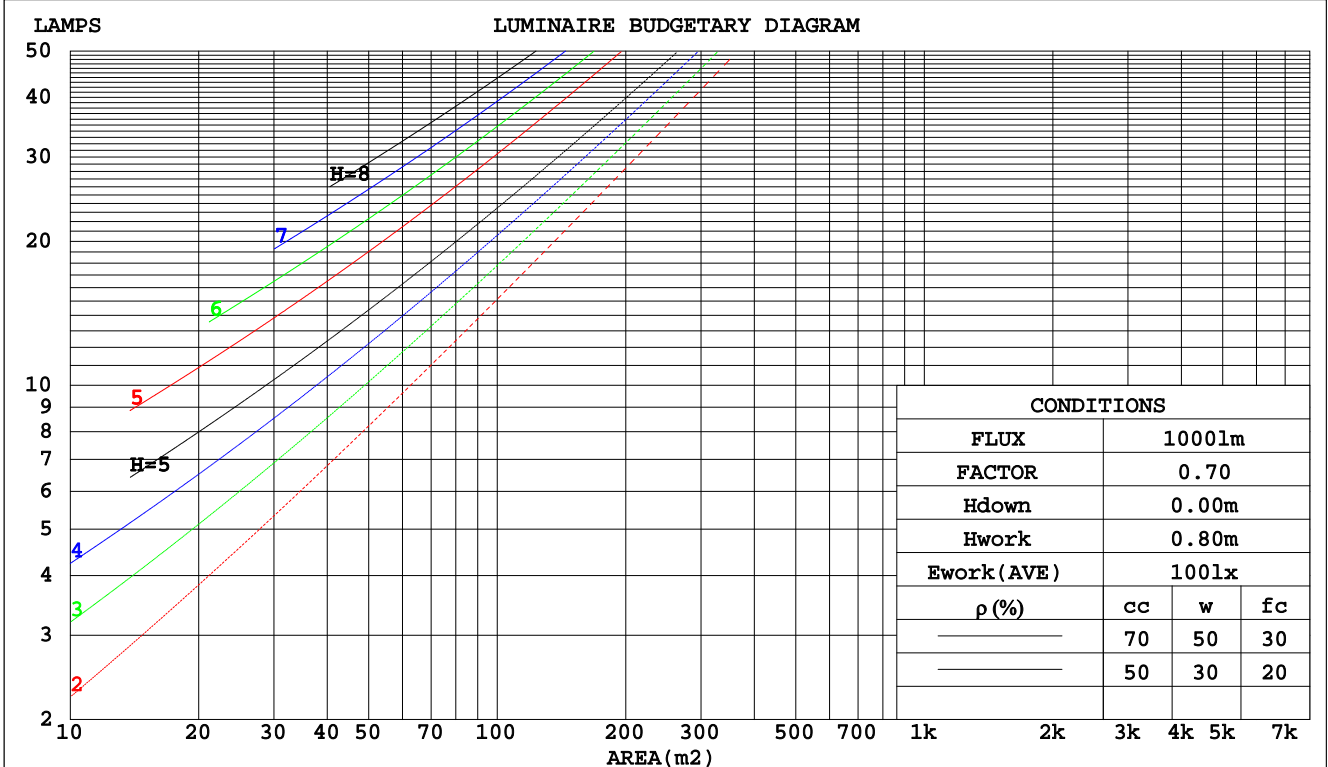
C Range: 0 - 360DEG
 C Interval: 22.5DEG
 Test Speed: HIGH
 Temperature:25.1DEG
 Operators:Evan
 Test Date:2022-11-29

γ Range: 0 - 180DEG
 γ Interval: 1.0DEG
 Test System:EVERFINE GO-R5000_V2 SYSTEM V2.0.351
 Humidity:42%
 Test Distance:2.532m [K=1.0000]
 Remarks:

CU AND LUMINAIRE BUDGETARY ESTIMATE DIAGRAM

Test:U:120.0V I:0.1312A P:15.45W PF:0.9812 Lamp Flux:787.284x1 lm		
NAME: LED luminaires	TYPE:N/A	WEIGHT:N/A
SPEC.:ASD-LVF24M-3D15CC-BK 5000K	DIM.: N/A	SERIAL No.:N/A
MFR.: ASD Lighting corp	SUR.:N/A	Shielding Angle:N/A

pcc	80%			70%			50%			30%			10%			0
	50%	30%	10%	50%	30%	10%	50%	30%	10%	50%	30%	10%	50%	30%	10%	0
pw																0
pfc	20%			20%			20%			20%			20%			0
RCR	RCR:Room Cavity Ratio Coefficients of Utilization(CU)															
0.0	1.14	1.14	1.14	1.09	1.09	1.09	1.00	1.00	1.00	.92	.92	.92	.84	.84	.84	.80
1.0	.96	.91	.87	.92	.88	.84	.84	.81	.77	.77	.74	.71	.70	.68	.66	.62
2.0	.83	.76	.70	.80	.73	.67	.73	.67	.63	.67	.62	.58	.61	.57	.54	.51
3.0	.73	.64	.58	.70	.62	.56	.64	.58	.52	.59	.53	.49	.53	.49	.46	.42
4.0	.64	.55	.49	.62	.54	.47	.57	.50	.44	.52	.46	.42	.48	.43	.39	.36
5.0	.58	.48	.42	.55	.47	.41	.51	.44	.38	.47	.41	.36	.43	.38	.34	.31
6.0	.52	.43	.36	.50	.41	.35	.46	.39	.34	.42	.36	.32	.39	.34	.30	.27
7.0	.47	.38	.32	.45	.37	.31	.42	.35	.30	.39	.33	.28	.36	.31	.27	.24
8.0	.43	.34	.29	.41	.33	.28	.38	.31	.27	.35	.30	.25	.33	.28	.24	.22
9.0	.39	.31	.26	.38	.30	.25	.35	.29	.24	.33	.27	.23	.30	.25	.22	.20
10.0	.36	.28	.23	.35	.28	.23	.33	.26	.22	.30	.25	.21	.28	.23	.20	.18



C Range: 0 - 360DEG
 C Interval: 22.5DEG
 Test Speed: HIGH
 Temperature:25.1DEG
 Operators:Evan
 Test Date:2022-11-29

γ Range: 0 - 180DEG
 γ Interval: 1.0DEG
 Test System:EVERFINE GO-R5000_V2 SYSTEM V2.0.351
 Humidity:42%
 Test Distance:2.532m [K=1.0000]
 Remarks:

WEC AND CCEC

Test:U:120.0V I:0.1312A P:15.45W PF:0.9812 Lamp Flux:787.284x1 lm		
NAME: LED luminaires	TYPE:N/A	WEIGHT:N/A
SPEC.:ASD-LVF24M-3D15CC-BK 5000K	DIM.: N/A	SERIAL No.:N/A
MFR.: ASD Lighting corp	SUR.:N/A	Shielding Angle:N/A

ρcc	80%			70%			50%			30%			10%			0
ρw	50%	30%	10%	50%	30%	10%	50%	30%	10%	50%	30%	10%	50%	30%	10%	0
ρfc	20%			20%			20%			20%			20%			0
RCR	RCR:Room Cavity Ratio						Wall Exitance Coefficients(WEC)									
0.0																
1.0	.359	.204	.065	.346	.197	.063	.321	.184	.059	.298	.172	.055	.277	.161	.052	
2.0	.314	.172	.053	.302	.166	.051	.279	.155	.048	.259	.145	.045	.239	.135	.043	
3.0	.280	.149	.045	.270	.144	.043	.249	.135	.041	.231	.126	.039	.213	.118	.037	
4.0	.254	.132	.039	.244	.128	.038	.226	.120	.036	.209	.112	.034	.193	.105	.032	
5.0	.232	.118	.034	.223	.114	.033	.206	.107	.032	.191	.101	.030	.176	.094	.028	
6.0	.213	.107	.031	.205	.104	.030	.190	.097	.028	.175	.091	.027	.162	.085	.025	
7.0	.197	.097	.028	.190	.095	.027	.176	.089	.026	.163	.083	.024	.150	.078	.023	
8.0	.183	.090	.025	.177	.087	.025	.164	.082	.023	.152	.077	.022	.140	.072	.021	
9.0	.171	.083	.023	.165	.080	.023	.153	.076	.021	.142	.071	.020	.131	.067	.019	
10.0	.161	.077	.021	.155	.075	.021	.144	.070	.020	.133	.066	.019	.124	.062	.018	

ρcc	80%			70%			50%			30%			10%			0
ρw	50%	30%	10%	50%	30%	10%	50%	30%	10%	50%	30%	10%	50%	30%	10%	0
ρfc	20%			20%			20%			20%			20%			0
RCR	RCR:Room Cavity Ratio						Ceiling Cavity Exitance Coefficients(CCEC)									
0.0	.343	.343	.343	.293	.293	.293	.200	.200	.200	.115	.115	.115	.037	.037	.037	
1.0	.337	.309	.284	.289	.265	.244	.197	.183	.169	.114	.106	.098	.036	.034	.032	
2.0	.330	.286	.250	.282	.246	.216	.193	.170	.151	.112	.099	.088	.036	.032	.029	
3.0	.322	.270	.228	.276	.233	.198	.189	.162	.139	.109	.094	.082	.035	.031	.027	
4.0	.314	.257	.214	.269	.222	.186	.185	.155	.131	.107	.091	.077	.034	.030	.025	
5.0	.306	.247	.204	.263	.214	.177	.181	.149	.125	.105	.088	.074	.034	.029	.024	
6.0	.299	.239	.196	.257	.207	.171	.177	.145	.121	.103	.085	.072	.033	.028	.024	
7.0	.292	.233	.191	.251	.202	.166	.174	.141	.118	.101	.083	.070	.033	.027	.023	
8.0	.286	.227	.187	.246	.197	.163	.170	.138	.115	.099	.082	.069	.032	.027	.023	
9.0	.280	.222	.184	.241	.193	.160	.167	.136	.114	.097	.080	.068	.031	.026	.022	
10.0	.274	.218	.181	.236	.189	.158	.164	.133	.112	.096	.079	.067	.031	.026	.022	

C Range: 0 - 360DEG
 C Interval: 22.5DEG
 Test Speed: HIGH
 Temperature:25.1DEG
 Operators:Evan
 Test Date:2022-11-29

γ Range: 0 - 180DEG
 γ Interval: 1.0DEG
 Test System:EVERFINE GO-R5000_V2 SYSTEM V2.0.351
 Humidity:42%
 Test Distance:2.532m [K=1.0000]
 Remarks:

UGR(Unified Glare Rating) Table

Test:U:120.0V I:0.1312A P:15.45W PF:0.9812 Lamp Flux:787.284x1 lm										
NAME: LED luminaires					TYPE:N/A			WEIGHT:N/A		
SPEC.:ASD-LVF24M-3D15CC-BK 5000K					DIM.: N/A			SERIAL No.:N/A		
MFR.: ASD Lighting corp					SUR.:N/A			Shielding Angle:N/A		
ceiling/cavity	0.7	0.7	0.5	0.5	0.3	0.7	0.7	0.5	0.5	0.3
walls	0.5	0.3	0.5	0.3	0.3	0.5	0.3	0.5	0.3	0.3
working plane	0.2	0.2	0.2	0.2	0.2	0.2	0.2	0.2	0.2	0.2
Room dimensions	Viewed crosswise					Viewed endwise				
x = 2H y = 2H	15.7	17.0	16.3	17.5	18.1	17.6	18.9	18.2	19.5	20.1
3H	17.3	18.5	17.9	19.1	19.7	20.2	21.4	20.8	22.0	22.6
4H	18.0	19.1	18.6	19.7	20.4	21.6	22.7	22.2	23.3	24.0
6H	18.6	19.7	19.2	20.3	20.9	23.1	24.2	23.7	24.8	25.5
8H	18.9	19.9	19.5	20.5	21.2	24.0	25.0	24.6	25.6	26.3
12H	19.1	20.1	19.7	20.7	21.4	25.0	26.0	25.6	26.6	27.3
4H 2H	17.2	18.3	17.8	18.9	19.5	18.4	19.6	19.0	20.1	20.8
3H	19.3	20.3	19.9	20.9	21.6	21.3	22.3	21.9	22.9	23.6
4H	20.3	21.2	21.0	21.9	22.6	22.8	23.7	23.5	24.4	25.1
6H	21.3	22.1	21.9	22.7	23.5	24.6	25.4	25.2	26.0	26.8
8H	21.7	22.4	22.3	23.1	23.9	25.5	26.3	26.2	26.9	27.7
12H	22.0	22.7	22.7	23.4	24.2	26.6	27.3	27.3	28.0	28.8
8H 4H	21.5	22.3	22.2	23.0	23.8	23.4	24.2	24.1	24.8	25.6
6H	23.0	23.7	23.7	24.4	25.2	25.5	26.1	26.2	26.8	27.6
8H	23.8	24.3	24.5	25.1	25.9	26.6	27.2	27.4	27.9	28.8
12H	24.4	24.9	25.2	25.7	26.6	28.0	28.5	28.7	29.2	30.1
12H 4H	21.9	22.6	22.6	23.2	24.1	23.5	24.2	24.2	24.9	25.7
6H	23.6	24.2	24.3	24.9	25.7	25.7	26.3	26.4	27.0	27.8
8H	24.5	25.0	25.3	25.8	26.7	27.0	27.5	27.7	28.2	29.1
Variations with the observer position at spacings:										
S = 1.0H	+ 0.1 / - 0.1					+ 0.1 / - 0.1				
1.5H	+ 0.2 / - 0.3					+ 0.2 / - 0.3				
2.0H	+ 0.3 / - 0.5					+ 0.3 / - 0.4				

CIE Pub.117 Corrected 787.3 lm Total Lamp Luminous Flux. (8log(F/F0) = -0.8)

C Range: 0 - 360DEG
 C Interval: 22.5DEG
 Test Speed: HIGH
 Temperature:25.1DEG
 Operators:Evan
 Test Date:2022-11-29

γ Range: 0 - 180DEG
 γ Interval: 1.0DEG
 Test System:EVERFINE GO-R5000_V2 SYSTEM V2.0.351
 Humidity:42%
 Test Distance:2.532m [K=1.0000]
 Remarks:

UTILIZATION FACTORS TABLE

Test:U:120.0V I:0.1312A P:15.45W PF:0.9812 Lamp Flux:787.284x1 lm		
NAME: LED luminaires	TYPE:N/A	WEIGHT:N/A
SPEC.:ASD-LVF24M-3D15CC-BK 5000K	DIM.: N/A	SERIAL No.:N/A
MFR.: ASD Lighting corp	SUR.:N/A	Shielding Angle:N/A

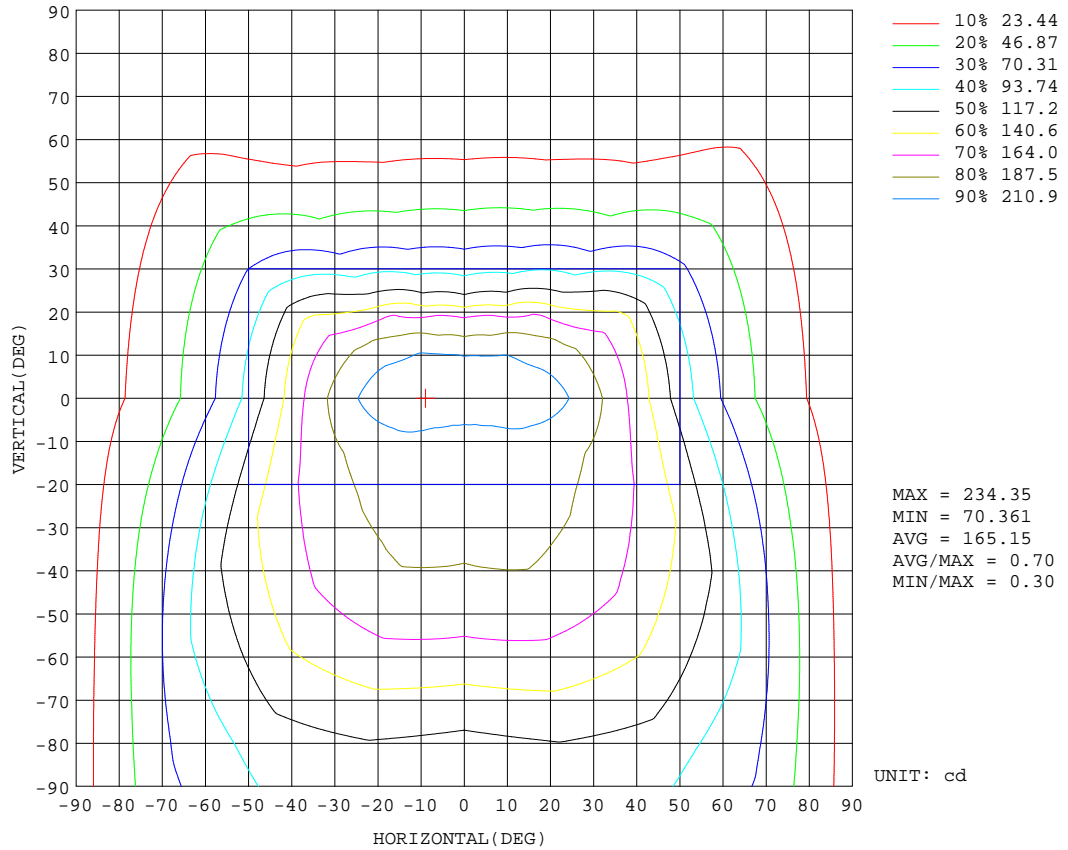
REFLECTANCE										
Ceiling	0.8	0.8	0.8	0.7	0.7	0.7	0.5	0.5	0.5	0
Walls	0.7	0.5	0.3	0.7	0.5	0.3	0.7	0.5	0.3	0
Working plane	0.2	0.2	0.2	0.2	0.2	0.2	0.2	0.2	0.2	0
ROOM INDEX	UTILIZATION FACTORS(PERCENT) $k(RI) \times RCR = 5$									
k = 0.60	50	38	31	49	38	31	47	37	30	24
0.80	59	47	39	57	46	39	55	44	38	30
1.00	67	54	46	65	53	46	61	53	44	36
1.25	73	61	53	71	60	52	67	57	51	41
1.50	78	67	59	76	65	58	71	62	55	45
2.00	85	75	67	82	73	65	76	68	62	51
2.50	90	80	72	86	77	70	80	73	67	54
3.00	93	84	77	89	81	75	82	76	71	57
4.00	98	90	84	94	87	81	86	81	76	61
5.00	100	94	88	96	90	85	88	84	80	64
ROOM INDEX	UF(total)									Direct
According to DIN EN 13032-2 2004			Suspended				SHRNOM = 1.25			

C Range: 0 - 360DEG
 C Interval: 22.5DEG
 Test Speed: HIGH
 Temperature:25.1DEG
 Operators:Evan
 Test Date:2022-11-29

γ Range: 0 - 180DEG
 γ Interval: 1.0DEG
 Test System:EVERFINE GO-R5000_V2 SYSTEM V2.0.351
 Humidity:42%
 Test Distance:2.532m [K=1.0000]
 Remarks:

ISOCANDELA DIAGRAM

Test:U:120.0V I:0.1312A P:15.45W PF:0.9812 Lamp Flux:787.284x1 lm		
NAME: LED luminaires	TYPE:N/A	WEIGHT:N/A
SPEC.:ASD-LVF24M-3D15CC-BK 5000K	DIM.: N/A	SERIAL No.:N/A
MFR.: ASD Lighting corp	SUR.:N/A	Shielding Angle:N/A

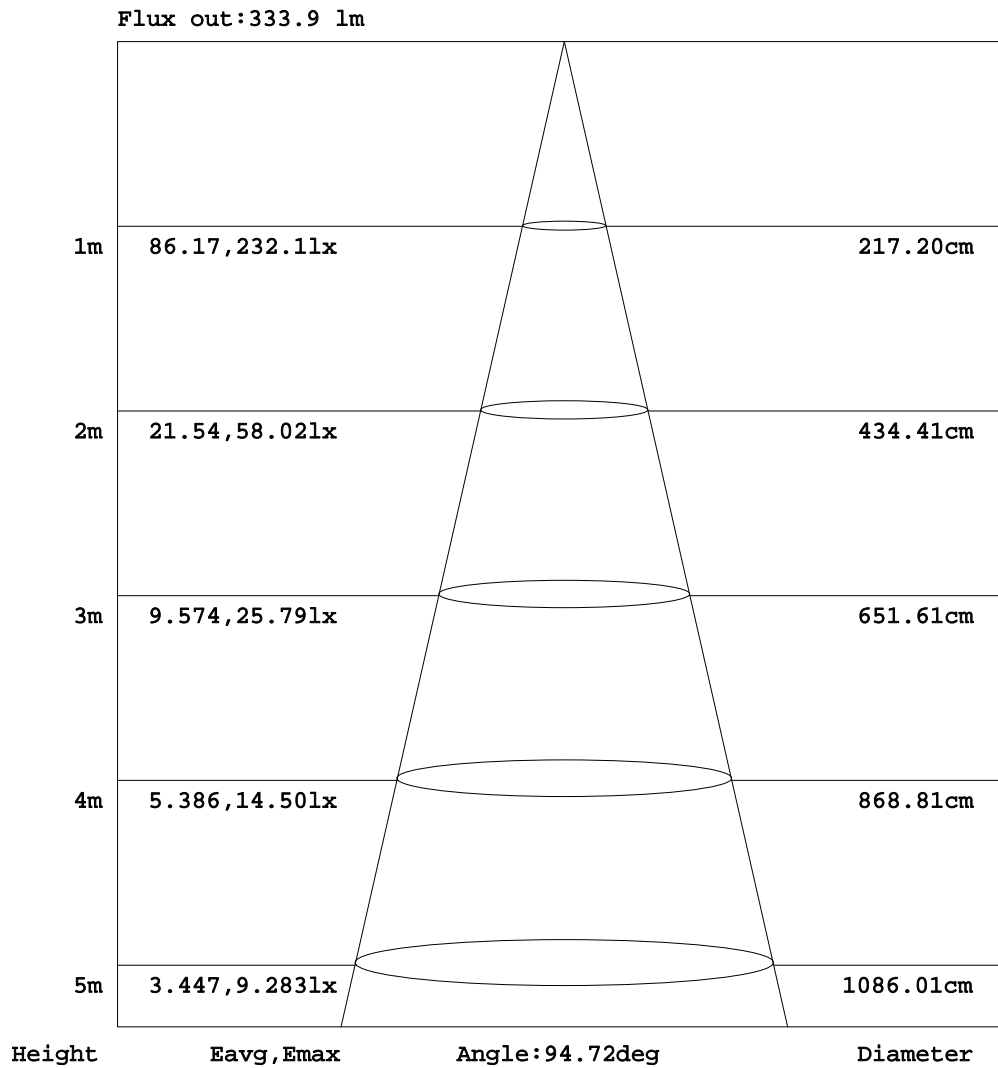


C Range: 0 - 360DEG
 C Interval: 22.5DEG
 Test Speed: HIGH
 Temperature:25.1DEG
 Operators:Evan
 Test Date:2022-11-29

γ Range: 0 - 180DEG
 γ Interval: 1.0DEG
 Test System:EVERFINE GO-R5000_V2 SYSTEM V2.0.351
 Humidity:42%
 Test Distance:2.532m [K=1.0000]
 Remarks:

AAI Figure

Test:U:120.0V I:0.1312A P:15.45W PF:0.9812 Lamp Flux:787.284x1 lm		
NAME: LED luminaires	TYPE:N/A	WEIGHT:N/A
SPEC.:ASD-LVF24M-3D15CC-BK 5000K	DIM.: N/A	SERIAL No.:N/A
MFR.:ASD Lighting corp	SUR.:N/A	Shielding Angle:N/A



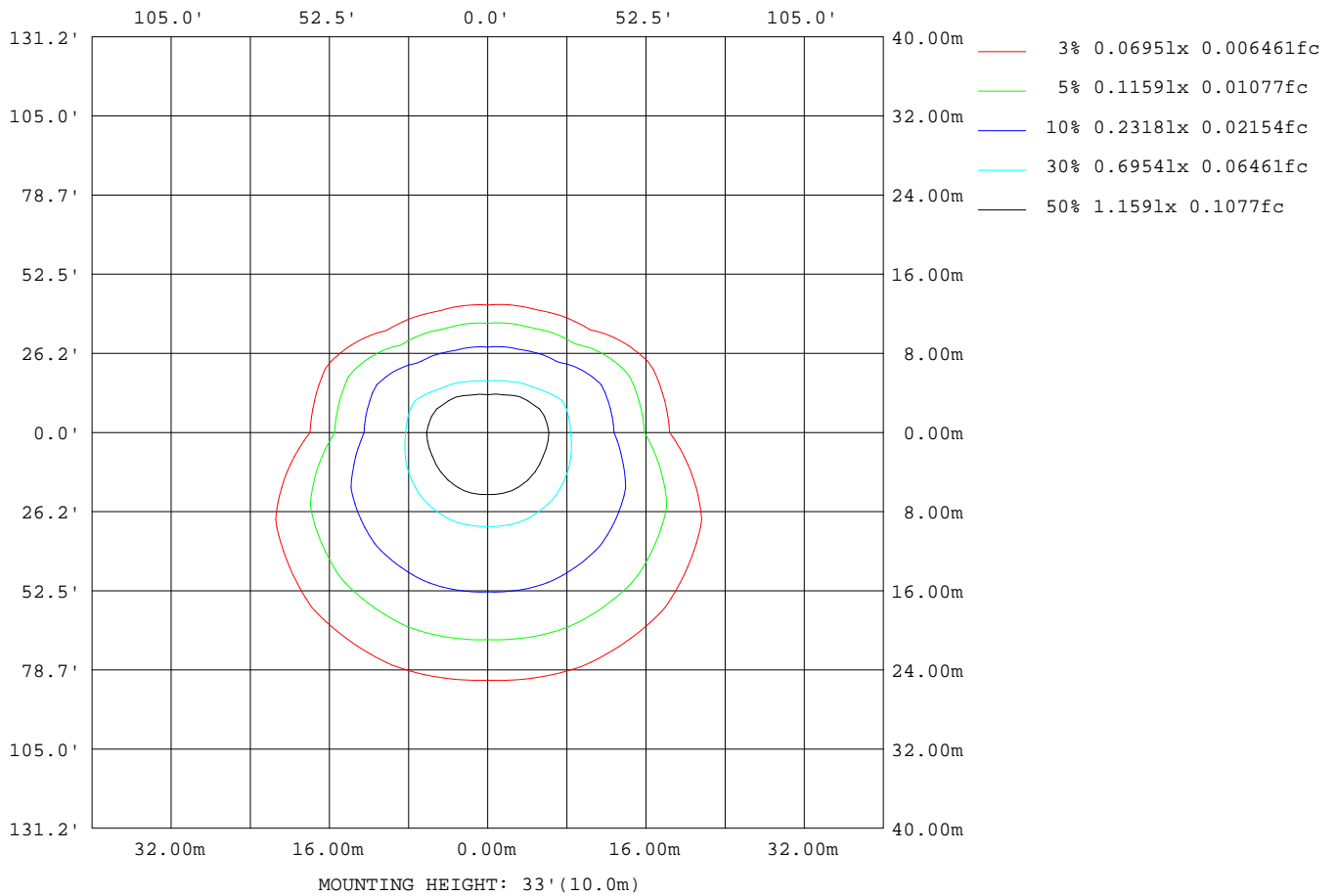
Note:The Curves indicate the illuminated area and the average illumination when the luminaire is at different distance.

C Range: 0 - 360DEG
 C Interval: 22.5DEG
 Test Speed: HIGH
 Temperature:25.1DEG
 Operators:Evan
 Test Date:2022-11-29

γ Range: 0 - 180DEG
 γ Interval: 1.0DEG
 Test System:EVERFINE GO-R5000_V2 SYSTEM V2.0.351
 Humidity:42%
 Test Distance:2.532m [K=1.0000]
 Remarks:

ISOLUX DIAGRAM

Test:U:120.0V I:0.1312A P:15.45W PF:0.9812 Lamp Flux:787.284x1 lm		
NAME: LED luminaires	TYPE:N/A	WEIGHT:N/A
SPEC.:ASD-LVF24M-3D15CC-BK 5000K	DIM.: N/A	SERIAL No.:N/A
MFR.: ASD Lighting corp	SUR.:N/A	Shielding Angle:N/A



C Range: 0 - 360DEG
 C Interval: 22.5DEG
 Test Speed: HIGH
 Temperature:25.1DEG
 Operators:Evan
 Test Date:2022-11-29

γ Range: 0 - 180DEG
 γ Interval: 1.0DEG
 Test System:EVERFINE GO-R5000_V2 SYSTEM V2.0.351
 Humidity:42%
 Test Distance:2.532m [K=1.0000]
 Remarks:

LED Avg.L Report

Test:U:120.0V I:0.1312A P:15.45W PF:0.9812 Lamp Flux:787.284x1 lm		
NAME: LED luminaires	TYPE:N/A	WEIGHT:N/A
SPEC.:ASD-LVF24M-3D15CC-BK 5000K	DIM.: N/A	SERIAL No.:N/A
MFR.: ASD Lighting corp	SUR.:N/A	Shielding Angle:N/A

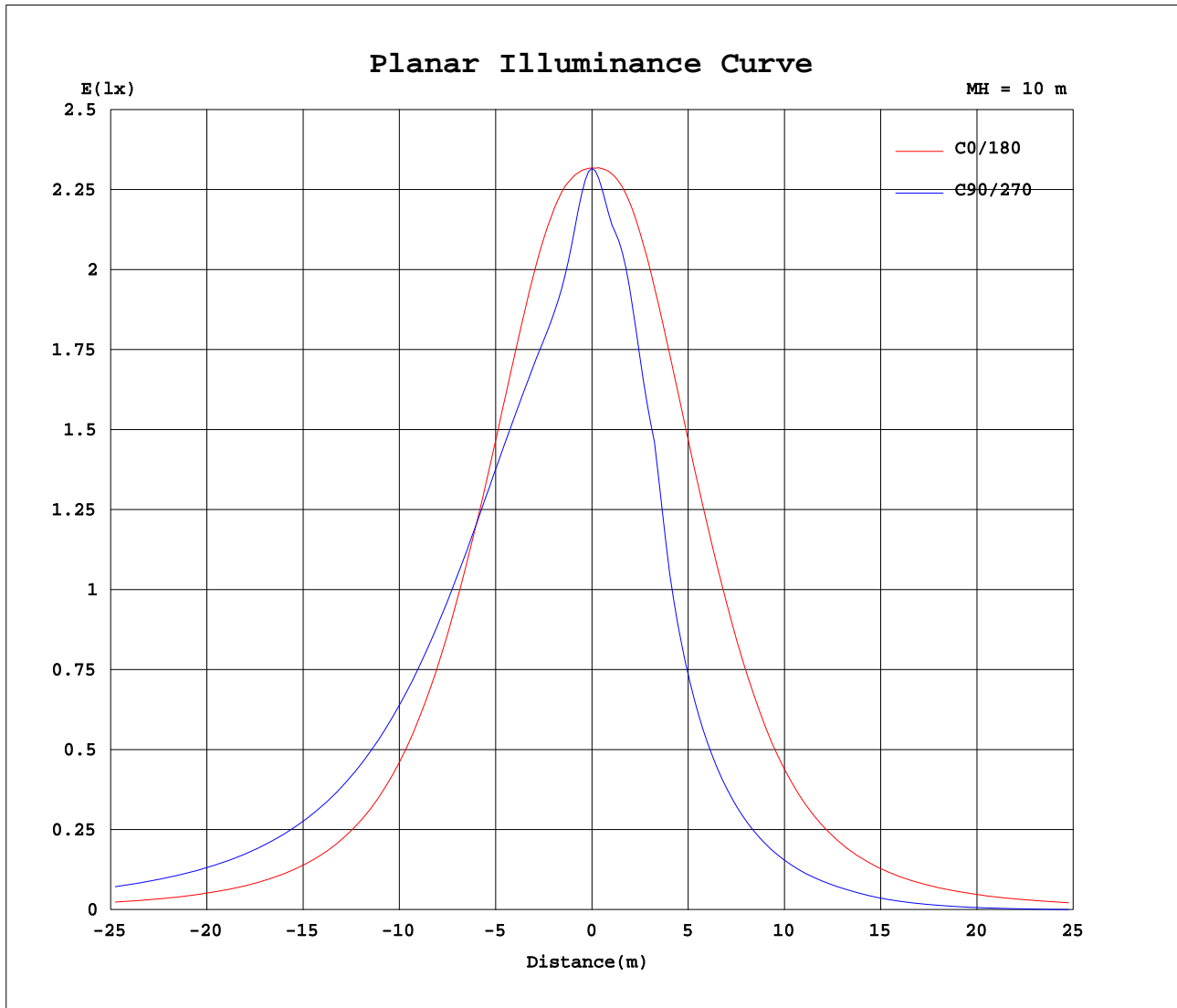
AvgL	cd/m2
L_0~180(65)av	1450
L_0~180(75)av	1362
L_0~180(85)av	2318
L_90~270(65)av	2113
L_90~270(75)av	2822
L_90~270(85)av	7130
L_45(65)av	2318
L_45(75)av	2928
L_45(85)av	7279

Standard: GB/T 29293-2012

C Range: 0 - 360DEG
 C Interval: 22.5DEG
 Test Speed: HIGH
 Temperature:25.1DEG
 Operators:Evan
 Test Date:2022-11-29

γ Range: 0 - 180DEG
 γ Interval: 1.0DEG
 Test System:EVERFINE GO-R5000_V2 SYSTEM V2.0.351
 Humidity:42%
 Test Distance:2.532m [K=1.0000]
 Remarks:

Planar Illuminance Curve



C Range: 0 - 360DEG
 C Interval: 22.5DEG
 Test Speed: HIGH
 Temperature: 25.1DEG
 Operators: Evan
 Test Date: 2022-11-29

γ Range: 0 - 180DEG
 γ Interval: 1.0DEG
 Test System: EVERFINE GO-R5000_V2 SYSTEM V2.0.351
 Humidity: 42%
 Test Distance: 2.532m [K=1.0000]
 Remarks:

LUMINOUS DISTRIBUTION INTENSITY DATA

Test:U:120.0V I:0.1312A P:15.45W PF:0.9812 Lamp Flux:787.284x1 lm		
NAME: LED luminaires	TYPE:N/A	WEIGHT:N/A
SPEC.:ASD-LVF24M-3D15CC-BK 5000K	DIM.: N/A	SERIAL No.:N/A
MFR.: ASD Lighting corp	SUR.:N/A	Shielding Angle:N/A

Table--1

UNIT: cd

C(DEG)\ γ (DEG)	0	22.5	45	67.5	90	112.5	135	157.5	180	202.5	225	247.5	270	292.5	315	337.5			
0	232	232	232	232	232	232	232	232	232	232	232	232	232	232	232	232			
5	232	229	223	217	216	218	224	230	233	231	226	221	220	221	224	230			
10	232	222	208	201	199	202	210	225	234	227	219	214	210	212	217	224			
15	229	214	201	197	195	197	202	216	231	219	210	191	183	191	208	215			
20	221	205	198	195	193	195	198	206	222	210	189	169	151	169	190	208			
25	209	197	195	195	193	195	195	197	210	196	172	124	111	125	173	196			
30	194	188	192	194	192	194	191	188	194	179	132	96.4	86.7	97.6	135	181			
35	176	180	188	192	190	192	187	178	174	162	103	75.9	68.9	77.2	106	165			
40	154	171	184	189	186	189	182	169	150	145	81.0	60.2	55.0	61.5	83.5	151			
45	130	161	178	184	181	184	176	158	124	119	63.8	47.6	43.7	48.8	65.9	124			
50	107	151	172	178	174	177	169	148	100	95.4	50.2	37.1	34.2	38.2	51.8	100			
55	86.4	140	164	170	165	169	162	137	79.9	74.9	39.0	27.6	24.1	28.6	40.2	79.1			
60	68.4	130	155	160	154	160	153	126	62.9	58.9	29.3	16.3	13.7	17.5	30.3	61.9			
65	53.2	119	146	150	144	149	143	116	48.8	46.3	17.9	6.95	5.05	7.90	19.2	48.5			
70	40.8	108	135	139	132	139	133	105	37.1	35.9	7.96	0.15	0.10	0.56	8.84	37.5			
75	30.5	97.6	125	129	121	128	123	94.6	28.2	24.8	2.52	0.11	0.12	0.12	1.54	26.9			
80	22.6	87.1	115	118	111	117	113	84.1	21.8	16.0	2.14	0.13	0.13	0.13	1.17	16.6			
85	17.0	76.9	105	110	103	109	104	74.4	16.6	12.0	1.57	0.15	0.16	0.16	0.85	10.5			
90	12.5	69.3	98.1	103	97.4	103	97.3	67.7	13.7	7.05	1.19	0.17	0.18	0.18	0.74	6.85			
95	11.9	62.9	91.7	97.4	92.0	97.1	90.9	61.5	12.8	7.70	1.12	0.19	0.20	0.20	0.75	7.37			
100	11.2	56.8	85.4	91.8	87.0	91.4	84.7	55.7	11.7	7.39	1.01	0.19	0.20	0.20	0.71	7.01			
105	10.3	51.0	79.2	86.3	82.2	86.0	78.5	50.1	10.5	7.22	0.85	0.17	0.18	0.18	0.62	6.99			
110	9.62	45.3	73.0	80.7	77.6	80.3	72.5	44.5	9.57	7.96	0.65	0.15	0.16	0.16	0.53	7.64			
115	8.69	39.7	66.8	75.1	72.5	74.7	66.3	39.2	8.63	7.83	0.53	0.14	0.14	0.14	0.40	7.48			
120	8.19	34.5	60.1	68.9	67.3	68.6	59.7	34.2	8.22	7.01	0.38	0.13	0.13	0.13	0.27	6.72			
125	8.22	29.6	53.7	62.4	61.3	62.0	53.2	29.5	8.59	6.61	0.17	0.13	0.13	0.14	0.18	6.23			
130	8.58	24.8	47.0	55.5	55.2	55.2	46.7	24.7	8.84	6.46	0.12	0.13	0.13	0.14	0.14	6.12			
135	8.77	19.9	40.2	48.5	48.5	48.0	39.9	19.9	8.94	6.30	0.13	0.13	0.13	0.13	0.14	6.02			
140	8.82	15.4	33.3	41.0	41.5	40.6	33.0	15.4	8.89	6.16	0.26	0.13	0.13	0.14	0.18	5.66			
145	8.74	11.5	26.4	33.3	34.1	33.0	26.1	11.6	8.72	6.25	0.54	0.14	0.14	0.15	0.30	4.95			
150	8.53	8.54	19.5	25.5	26.5	25.2	19.3	8.62	8.44	6.62	0.93	0.21	0.16	0.16	0.57	3.84			
155	8.11	6.78	12.8	17.7	18.8	17.5	12.7	6.57	7.72	6.89	1.45	0.37	0.18	0.20	0.45	2.31			
160	6.32	5.05	6.73	10.3	11.4	10.1	6.63	4.08	5.75	5.83	2.49	0.75	0.22	0.21	0.58	1.46			
165	4.29	3.54	2.54	3.65	4.39	3.59	2.24	3.29	3.36	3.64	2.71	0.97	0.29	0.24	0.58	1.01			
170	1.41	2.06	1.38	0.79	0.50	0.68	1.21	1.83	0.99	1.00	0.77	0.37	0.25	0.26	0.28	0.53			
175	0.50	0.48	0.68	0.53	0.42	0.45	0.41	0.42	0.33	0.34	0.31	0.29	0.29	0.29	0.30	0.30			
180	0.32	0.33	0.34	0.33	0.35	0.35	0.35	0.34	0.33	0.33	0.33	0.34	0.35	0.34	0.35	0.35			

C Range: 0 - 360DEG
 C Interval: 22.5DEG
 Test Speed: HIGH
 Temperature:25.1DEG
 Operators:Evan
 Test Date:2022-11-29

γ Range: 0 - 180DEG
 γ Interval: 1.0DEG
 Test System:EVERFINE GO-R5000_V2 SYSTEM V2.0.351
 Humidity:42%
 Test Distance:2.532m [K=1.0000]
 Remarks: