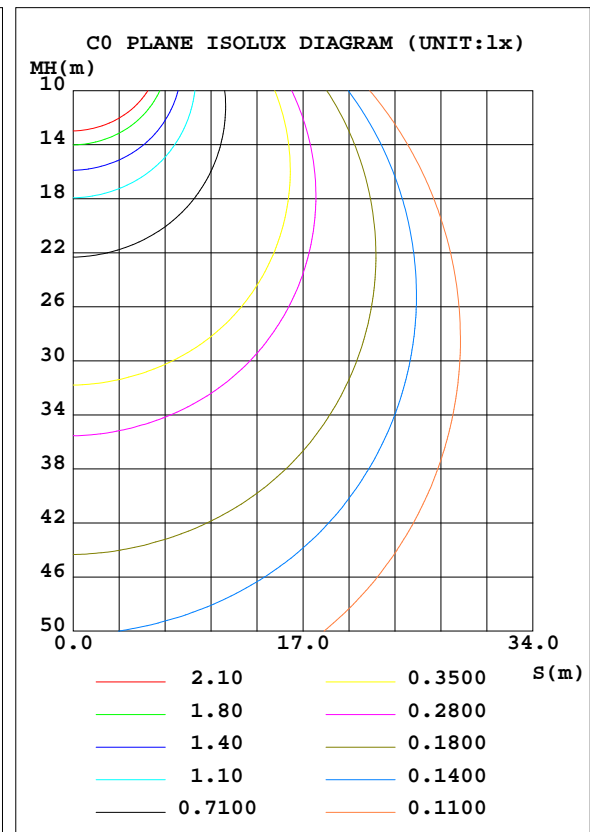
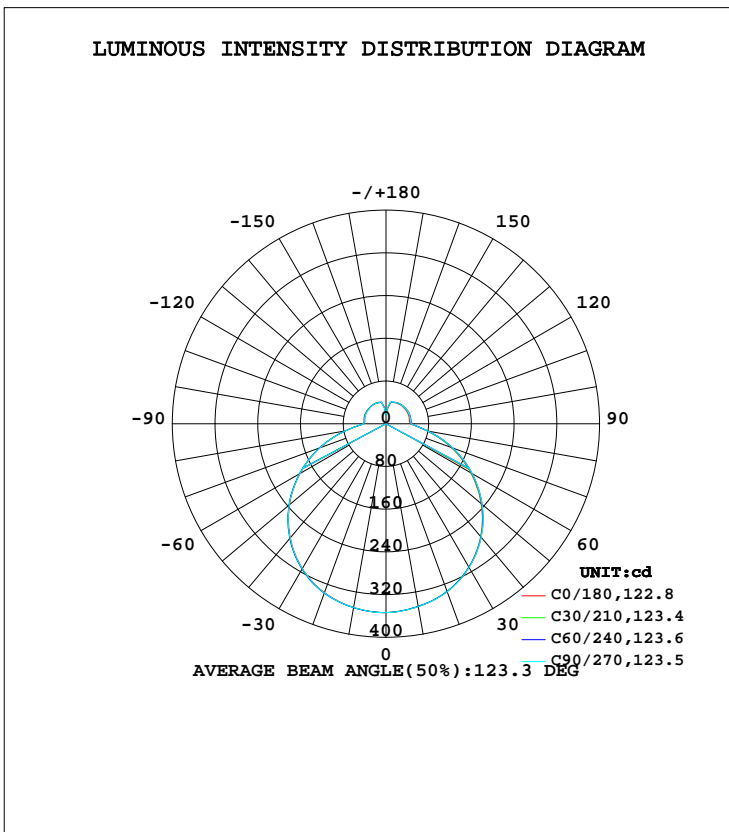


LUMINAIRE PHOTOMETRIC TEST REPORT

Test:U:120.00V I:0.2164A P:24.530W PF:0.9446 Freq:60.00Hz Lamp Flux:1459.12x1 lm		
NAME: LED Ceiling light	TYPE:LED	WEIGHT:
SPEC.:ASD-LFC-LF-14D24-AC-BK 4000K	DIM.:	SERIAL No.:
MFR.: ASD Lighting Corp	SUR.:	Shielding Angle:

DATA OF LAMP		PHOTOMETRIC DATA Eff: 59.48 lm/W			
MODEL	ASD-LFC-LF-14D24-AC-BK	I _{max} (cd)	353.9	S/MH(C0/180)	1.32
NOMINAL POWER(W)	24	LOR(%)	100.0	S/MH(C90/270)	1.32
RATED VOLTAGE(V)	120	TOTAL FLUX(lm)	1459.1	η UP, DN(C0-180)	9.7,40.6
NOMINAL FLUX(lm)	1459.12	CIE CLASS	SEMI-D.	η UP, DN(C180-360)	9.1,40.6
LAMPS INSIDE	1	η up(%)	18.9	CIBSE SHR NOM	1.50
TEST VOLTAGE(V)	120	η down(%)	81.1	CIBSE SHR MAX	1.50



C Range: 0 - 360DEG
 C Interval: 15.0DEG
 Test Speed: HIGH
 Temperature: 25.0DEG
 Operators: Alan Wang
 Test Date: 27 June 2023

γ Range: 0 - 180DEG
 γ Interval: 1.0DEG
 Test System: EVERFINE GO-R5000_V2 SYSTEM V2.00.416
 Humidity: 42.7%
 Test Distance: 2.500m [K=1.0395]
 Remarks:

ZONAL FLUX DIAGRAM

ZONAL FLUX DIAGRAM:

γ	C0	C45	C90	C135	C180	C225	C270	C315	γ	Φ zone	Φ total	%lum,lamp
10	347.7	347.5	347.8	348.4	349.4	349.8	349.4	348.6	0- 10	33.49	33.49	2.3,2.3
20	334.4	334.4	334.8	335.4	336.7	337.7	337.1	335.6	10- 20	97.01	130.5	8.94,8.94
30	310.1	310.6	311.2	311.4	313.1	314.3	313.6	311.6	20- 30	150.0	280.5	19.2,19.2
40	275.7	276.9	277.4	277.2	278.8	280.1	279.5	277.5	30- 40	185.3	465.9	31.9,31.9
50	232.6	234.6	235.1	234.1	235.9	237.4	236.5	234.5	40- 50	198.7	664.5	45.5,45.5
60	183.1	185.5	186.1	184.2	185.6	186.8	186.0	184.2	50- 60	188.5	853.0	58.5,58.5
70	130.0	132.7	133.2	131.0	131.7	132.4	131.8	130.6	60- 70	157.1	1010	69.2,69.2
80	77.30	80.02	79.68	76.98	77.07	76.92	76.45	76.85	70- 80	110.4	1121	76.8,76.8
90	45.60	48.44	47.84	44.75	42.70	41.79	41.97	43.25	80- 90	63.50	1184	81.1,81.1
100	44.51	47.17	46.64	43.95	41.89	40.86	40.63	42.05	90-100	47.54	1232	84.4,84.4
110	45.37	47.61	47.33	44.98	43.13	42.09	41.77	43.08	100-110	46.53	1278	87.6,87.6
120	45.48	47.39	47.20	45.31	43.47	42.67	42.38	43.48	110-120	44.27	1322	90.6,90.6
130	45.00	46.62	46.48	44.91	43.43	42.72	42.49	43.46	120-130	39.97	1362	93.4,93.4
140	44.87	45.96	45.71	44.52	43.47	43.03	43.02	43.86	130-140	34.33	1397	95.7,95.7
150	43.90	44.90	44.71	43.75	43.54	43.04	43.07	43.53	140-150	27.72	1424	97.6,97.6
160	42.28	42.68	43.41	42.99	42.88	42.23	42.02	42.57	150-160	20.02	1444	99,99
170	35.53	36.30	37.03	37.17	37.33	36.85	36.04	36.20	160-170	11.81	1456	99.8,99.8
180	23.55	16.10	16.32	16.46	23.42	23.44	23.26	22.89	170-180	2.890	1459	100,100
DEG	LUMINOUS INTENSITY:cd									UNIT:lm		

Conical surface Flux(90deg): 564.99 lm

%lum = 38.7%

%lamp = 38.7%

Conical surface Flux(120deg): 852.99 lm

%lum = 58.5%

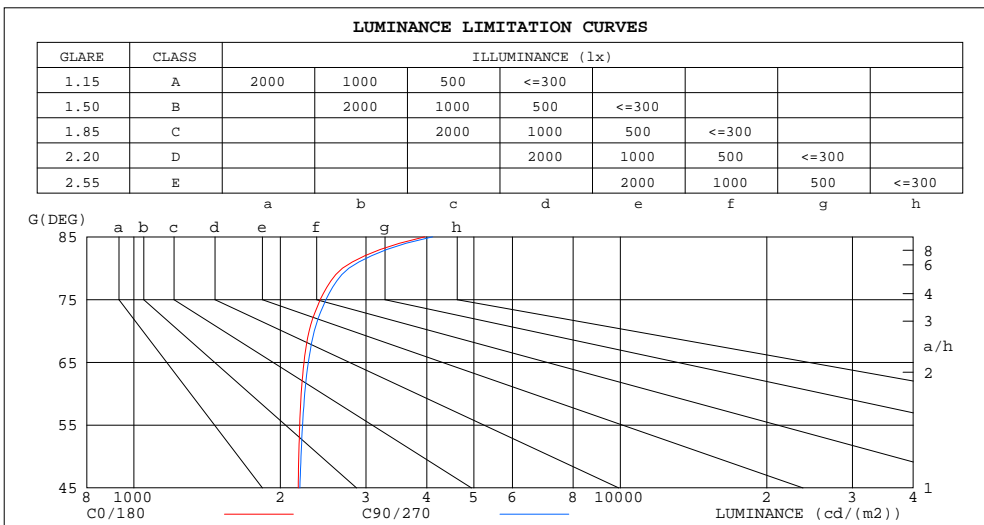
%lamp = 58.5%

C Range: 0 - 360DEG
 C Interval: 15.0DEG
 Test Speed: HIGH
 Temperature: 25.0DEG
 Operators: Alan Wang
 Test Date: 27 June 2023

γ Range: 0 - 180DEG
 γ Interval: 1.0DEG
 Test System: EVERFINE GO-R5000_V2 SYSTEM V2.00.416
 Humidity: 42.7%
 Test Distance: 2.500m [K=1.0395]
 Remarks:

LUMINANCE LIMITATION CURVES

Test:U:120.00V I:0.2164A P:24.530W PF:0.9446 Freq:60.00Hz Lamp Flux:1459.12x1 lm		
NAME: LED Ceiling light	TYPE:LED	WEIGHT:
SPEC.:ASD-LFC-LF-14D24-AC-BK 4000K	DIM.:	SERIAL No.:
MFR.: ASD Lighting Corp	SUR.:	Shielding Angle:



LUMINANCE cd/(m2)		
G(DEG)	C0/180	C90/270
85	3963	4113
80	2685	2767
75	2416	2483
70	2293	2349
65	2238	2284
60	2208	2245
55	2192	2222
50	2183	2206
45	2177	2194

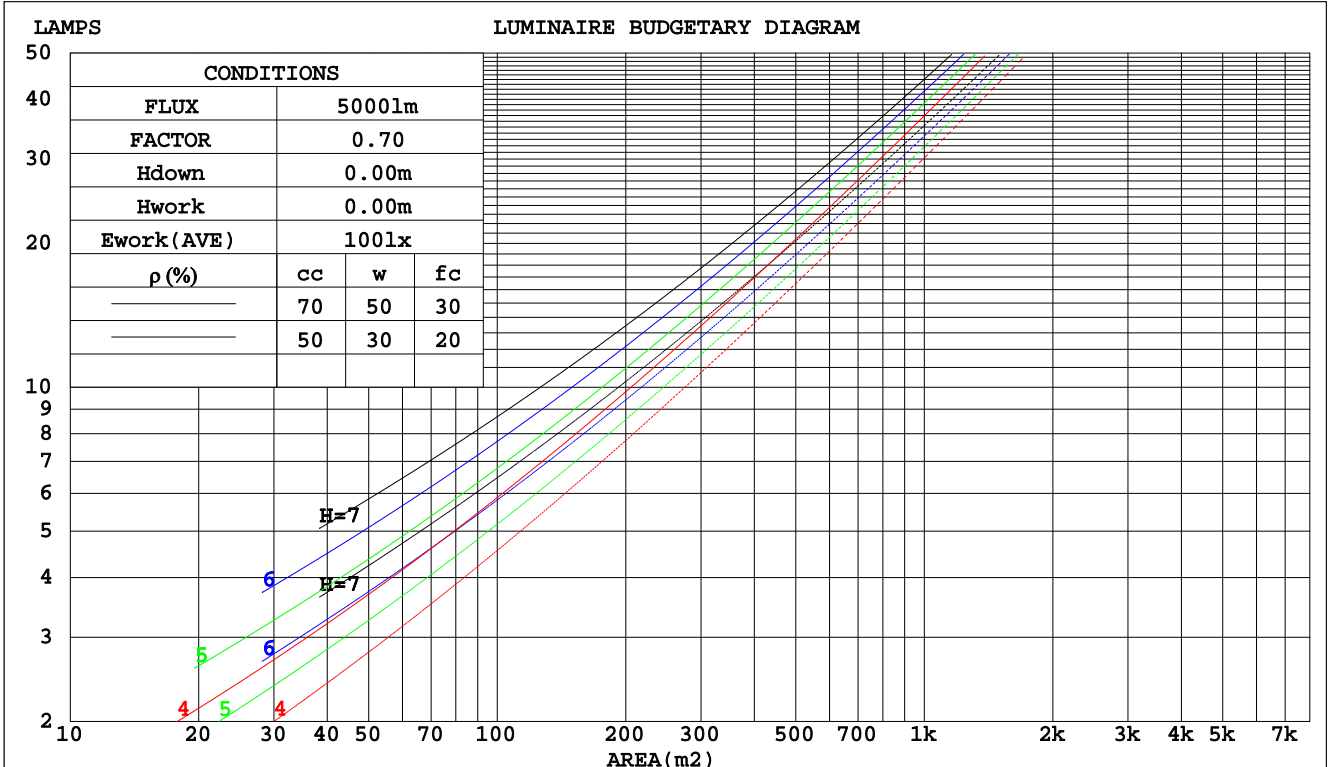
C Range: 0 - 360DEG
 C Interval: 15.0DEG
 Test Speed: HIGH
 Temperature: 25.0DEG
 Operators: Alan Wang
 Test Date: 27 June 2023

γ Range: 0 - 180DEG
 γ Interval: 1.0DEG
 Test System: EVERFINE GO-R5000_V2 SYSTEM V2.00.416
 Humidity: 42.7%
 Test Distance: 2.500m [K=1.0395]
 Remarks:

CU AND LUMINAIRE BUDGETARY ESTIMATE DIAGRAM

Test:U:120.00V I:0.2164A P:24.530W PF:0.9446 Freq:60.00Hz Lamp Flux:1459.12x1 lm		
NAME: LED Ceiling light	TYPE:LED	WEIGHT:
SPEC.:ASD-LFC-LF-14D24-AC-BK 4000K	DIM.:	SERIAL No.:
MFR.: ASD Lighting Corp	SUR.:	Shielding Angle:

pcc	80%			70%			50%			30%			10%			0
	50%	30%	10%	50%	30%	10%	50%	30%	10%	50%	30%	10%	50%	30%	10%	0
pw																
pfc	20%			20%			20%			20%			20%			0
RCR	RCR:Room Cavity Ratio						Coefficients of Utilization(CU)									
0.0	1.15	1.15	1.15	1.10	1.10	1.10	1.01	1.01	1.01	.92	.92	.92	.85	.85	.85	.81
1.0	.98	.93	.89	.94	.89	.85	.86	.82	.79	.79	.76	.74	.72	.70	.68	.65
2.0	.84	.77	.71	.81	.74	.69	.74	.69	.64	.68	.64	.60	.62	.59	.56	.53
3.0	.73	.65	.58	.70	.63	.56	.65	.58	.53	.59	.54	.50	.55	.50	.47	.44
4.0	.65	.56	.49	.62	.54	.47	.57	.50	.45	.53	.47	.42	.48	.44	.40	.37
5.0	.58	.48	.42	.55	.47	.41	.51	.44	.38	.47	.41	.36	.43	.38	.34	.32
6.0	.52	.43	.36	.50	.41	.35	.46	.39	.33	.42	.36	.32	.39	.34	.30	.27
7.0	.47	.38	.32	.45	.37	.31	.42	.34	.29	.39	.32	.28	.36	.30	.26	.24
8.0	.42	.34	.28	.41	.33	.27	.38	.31	.26	.35	.29	.25	.33	.27	.24	.21
9.0	.39	.30	.25	.37	.30	.24	.35	.28	.23	.32	.26	.22	.30	.25	.21	.19
10.0	.36	.28	.22	.34	.27	.22	.32	.26	.21	.30	.24	.20	.28	.23	.19	.17



C Range: 0 - 360DEG
 C Interval: 15.0DEG
 Test Speed: HIGH
 Temperature: 25.0DEG
 Operators: Alan Wang
 Test Date: 27 June 2023

γ Range: 0 - 180DEG
 γ Interval: 1.0DEG
 Test System: EVERFINE GO-R5000_V2 SYSTEM V2.00.416
 Humidity: 42.7%
 Test Distance: 2.500m [K=1.0395]
 Remarks:

WEC AND CCEC

Test:U:120.00V I:0.2164A P:24.530W PF:0.9446 Freq:60.00Hz Lamp Flux:1459.12x1 lm		
NAME: LED Ceiling light	TYPE:LED	WEIGHT:
SPEC.:ASD-LFC-LF-14D24-AC-BK 4000K	DIM.:	SERIAL No.:
MFR.: ASD Lighting Corp	SUR.:	Shielding Angle:

ρcc	80%			70%			50%			30%			10%			0
ρw	50%	30%	10%	50%	30%	10%	50%	30%	10%	50%	30%	10%	50%	30%	10%	0
ρfc	20%			20%			20%			20%			20%			0
RCR	RCR:Room Cavity Ratio						Wall Exitance Coefficients(WEC)									
0.0																
1.0	.342	.194	.062	.329	.188	.060	.305	.175	.056	.283	.163	.052	.262	.152	.049	
2.0	.307	.168	.052	.296	.163	.050	.274	.152	.047	.254	.142	.045	.235	.133	.042	
3.0	.278	.148	.044	.268	.143	.043	.248	.135	.041	.230	.126	.039	.213	.118	.037	
4.0	.254	.132	.039	.244	.128	.038	.226	.120	.036	.210	.113	.034	.194	.106	.032	
5.0	.233	.119	.034	.224	.115	.033	.208	.108	.032	.193	.102	.030	.179	.095	.029	
6.0	.214	.108	.031	.207	.104	.030	.192	.098	.029	.178	.092	.027	.165	.087	.026	
7.0	.199	.098	.028	.192	.095	.027	.178	.090	.026	.165	.085	.025	.153	.080	.023	
8.0	.185	.090	.025	.178	.088	.025	.166	.083	.024	.154	.078	.023	.143	.074	.021	
9.0	.173	.084	.023	.167	.081	.023	.155	.077	.022	.145	.072	.021	.134	.068	.020	
10.0	.162	.078	.022	.157	.076	.021	.146	.072	.020	.136	.068	.019	.126	.064	.018	

ρcc	80%			70%			50%			30%			10%			0
ρw	50%	30%	10%	50%	30%	10%	50%	30%	10%	50%	30%	10%	50%	30%	10%	0
ρfc	20%			20%			20%			20%			20%			0
RCR	RCR:Room Cavity Ratio						Ceiling Cavity Exitance Coefficients(CCEC)									
0.0	.334	.334	.334	.286	.286	.286	.195	.195	.195	.112	.112	.112	.036	.036	.036	
1.0	.327	.301	.277	.280	.258	.238	.192	.178	.165	.110	.103	.096	.035	.033	.031	
2.0	.320	.278	.242	.274	.239	.209	.188	.165	.146	.108	.096	.086	.035	.031	.028	
3.0	.313	.261	.220	.268	.225	.190	.184	.156	.134	.106	.091	.079	.034	.030	.026	
4.0	.305	.248	.205	.262	.215	.178	.180	.150	.125	.104	.088	.074	.034	.029	.024	
5.0	.298	.238	.195	.256	.206	.169	.176	.144	.120	.102	.085	.071	.033	.028	.023	
6.0	.291	.230	.187	.250	.200	.163	.172	.140	.115	.100	.082	.069	.032	.027	.023	
7.0	.284	.224	.182	.244	.194	.158	.169	.136	.112	.098	.080	.067	.032	.026	.022	
8.0	.278	.218	.178	.239	.189	.155	.165	.133	.110	.096	.078	.065	.031	.026	.022	
9.0	.271	.214	.174	.234	.185	.152	.162	.130	.108	.094	.077	.064	.031	.025	.021	
10.0	.266	.209	.172	.229	.182	.150	.159	.128	.107	.093	.076	.064	.030	.025	.021	

C Range: 0 - 360DEG
 C Interval: 15.0DEG
 Test Speed: HIGH
 Temperature: 25.0DEG
 Operators: Alan Wang
 Test Date: 27 June 2023

γ Range: 0 - 180DEG
 γ Interval: 1.0DEG
 Test System: EVERFINE GO-R5000_V2 SYSTEM V2.00.416
 Humidity: 42.7%
 Test Distance: 2.500m [K=1.0395]
 Remarks:

UGR(Unified Glare Rating) Table

Test:U:120.00V I:0.2164A P:24.530W PF:0.9446 Freq:60.00Hz Lamp Flux:1459.12x1 lm										
NAME: LED Ceiling light					TYPE:LED			WEIGHT:		
SPEC.:ASD-LFC-LF-14D24-AC-BK 4000K					DIM.:			SERIAL No.:		
MFR.: ASD Lighting Corp					SUR.:			Shielding Angle:		
ceiling/cavity	0.7	0.7	0.5	0.5	0.3	0.7	0.7	0.5	0.5	0.3
walls	0.5	0.3	0.5	0.3	0.3	0.5	0.3	0.5	0.3	0.3
working plane	0.2	0.2	0.2	0.2	0.2	0.2	0.2	0.2	0.2	0.2
Room dimensions	Viewed crosswise					Viewed endwise				
x = 2H y = 2H	14.5	15.8	15.0	16.3	16.9	14.6	15.9	15.1	16.4	17.0
3H	16.4	17.6	16.9	18.1	18.7	16.5	17.7	17.0	18.2	18.8
4H	17.2	18.4	17.8	18.9	19.6	17.4	18.5	17.9	19.1	19.7
6H	18.1	19.1	18.6	19.7	20.4	18.2	19.3	18.8	19.8	20.5
8H	18.5	19.5	19.1	20.1	20.8	18.6	19.6	19.2	20.2	20.9
12H	18.9	19.9	19.5	20.5	21.2	19.1	20.1	19.7	20.7	21.3
4H 2H	15.2	16.3	15.7	16.9	17.5	15.2	16.4	15.8	16.9	17.6
3H	17.2	18.2	17.8	18.8	19.5	17.3	18.3	17.9	18.9	19.6
4H	18.2	19.1	18.9	19.8	20.5	18.4	19.3	19.0	19.9	20.6
6H	19.2	20.0	19.9	20.7	21.4	19.3	20.2	20.0	20.8	21.6
8H	19.7	20.5	20.4	21.1	21.9	19.9	20.6	20.5	21.3	22.0
12H	20.3	20.9	20.9	21.6	22.4	20.4	21.1	21.1	21.8	22.6
8H 4H	18.6	19.4	19.3	20.0	20.8	18.7	19.5	19.4	20.1	20.9
6H	19.8	20.5	20.5	21.2	22.0	19.9	20.6	20.6	21.3	22.1
8H	20.5	21.0	21.2	21.8	22.6	20.6	21.2	21.3	21.9	22.7
12H	21.2	21.7	22.0	22.4	23.3	21.4	21.8	22.1	22.6	23.4
12H 4H	18.7	19.4	19.4	20.0	20.8	18.8	19.5	19.4	20.1	20.9
6H	20.0	20.5	20.7	21.2	22.1	20.1	20.6	20.8	21.3	22.2
8H	20.7	21.2	21.5	21.9	22.8	20.8	21.3	21.6	22.0	22.9
Variations with the observer position at spacings:										
S = 1.0H	+ 0.1 / - 0.1					+ 0.1 / - 0.1				
1.5H	+ 0.2 / - 0.3					+ 0.2 / - 0.3				
2.0H	+ 0.2 / - 0.4					+ 0.2 / - 0.4				

CIE Pub.117, 1459 lm Total Lamp Luminous Flux Corrected (8log(F/F0) = 1.3)
 Area: 0.165812 m2

C Range: 0 - 360DEG
 C Interval: 15.0DEG
 Test Speed: HIGH
 Temperature: 25.0DEG
 Operators: Alan Wang
 Test Date: 27 June 2023

γ Range: 0 - 180DEG
 γ Interval: 1.0DEG
 Test System: EVERFINE GO-R5000_V2 SYSTEM V2.00.416
 Humidity: 42.7%
 Test Distance: 2.500m [K=1.0395]
 Remarks:

UTILIZATION FACTORS TABLE

Test:U:120.00V I:0.2164A P:24.530W PF:0.9446 Freq:60.00Hz Lamp Flux:1459.12x1 lm		
NAME: LED Ceiling light	TYPE:LED	WEIGHT:
SPEC.:ASD-LFC-LF-14D24-AC-BK 4000K	DIM.:	SERIAL No.:
MFR.:ASD Lighting Corp	SUR.:	Shielding Angle:

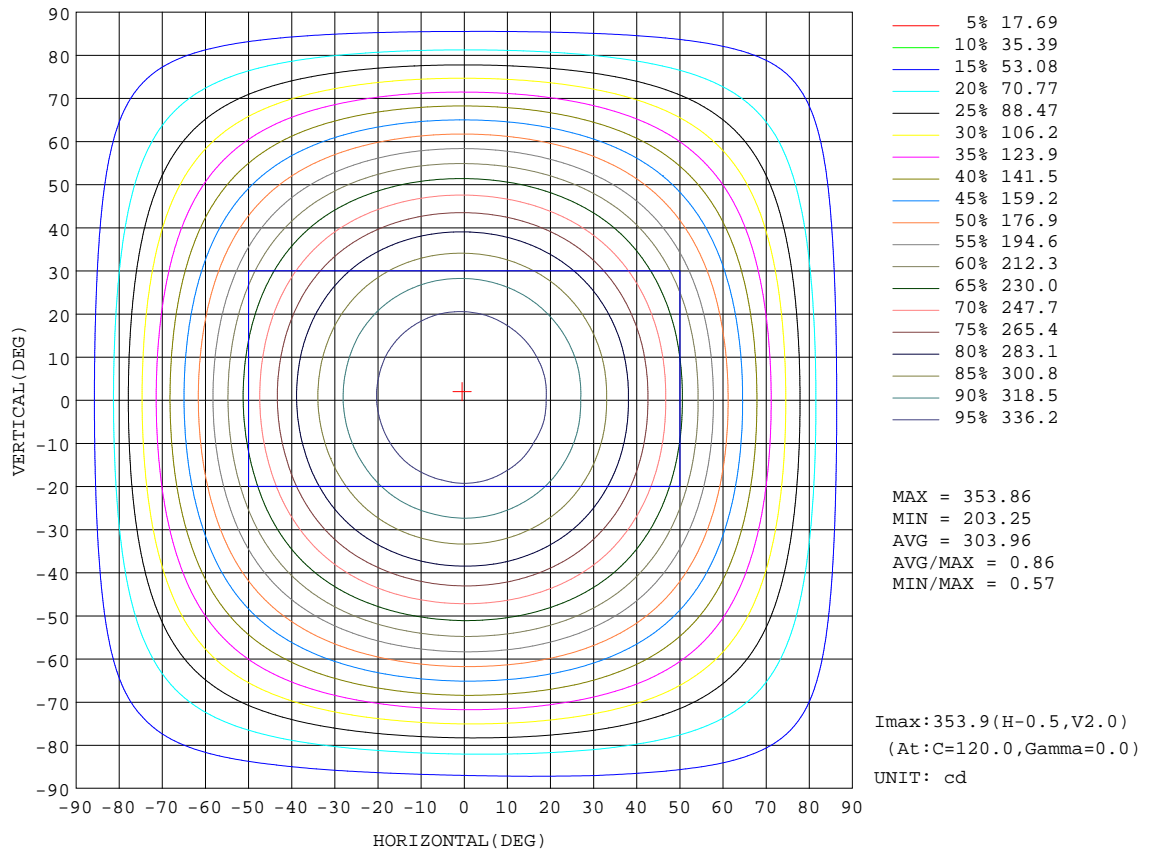
REFLECTANCE										
Ceiling	0.8	0.8	0.8	0.7	0.7	0.7	0.5	0.5	0.5	0
Walls	0.7	0.5	0.3	0.7	0.5	0.3	0.7	0.5	0.3	0
Working plane	0.2	0.2	0.2	0.2	0.2	0.2	0.2	0.2	0.2	0
ROOM INDEX	UTILIZATION FACTORS(PERCENT) $k(RI) \times RCR = 5$									
k = 0.60	50	38	31	48	37	30	46	36	30	23
0.80	59	47	39	57	46	39	54	44	38	30
1.00	67	55	47	65	54	46	61	54	45	36
1.25	74	62	54	72	61	54	67	58	52	42
1.50	79	68	60	76	66	59	71	63	57	46
2.00	86	76	69	83	74	67	77	70	64	52
2.50	91	82	74	87	79	73	81	74	69	56
3.00	94	86	79	91	83	77	84	78	73	59
4.00	99	92	86	95	89	83	87	83	78	64
5.00	102	96	91	97	92	88	90	86	82	66
ROOM INDEX	UF(total)									Direct
According to DIN EN 13032-2 2004			Suspended				SHRNOM = 1.25			

C Range: 0 - 360DEG
 C Interval: 15.0DEG
 Test Speed: HIGH
 Temperature: 25.0DEG
 Operators: Alan Wang
 Test Date: 27 June 2023

γ Range: 0 - 180DEG
 γ Interval: 1.0DEG
 Test System: EVERFINE GO-R5000_V2 SYSTEM V2.00.416
 Humidity: 42.7%
 Test Distance: 2.500m [K=1.0395]
 Remarks:

ISOCANDELA DIAGRAM

Test:U:120.00V I:0.2164A P:24.530W PF:0.9446 Freq:60.00Hz Lamp Flux:1459.12x1 lm		
NAME: LED Ceiling light	TYPE:LED	WEIGHT:
SPEC.:ASD-LFC-LF-14D24-AC-BK 4000K	DIM.:	SERIAL No.:
MFR.: ASD Lighting Corp	SUR.:	Shielding Angle:

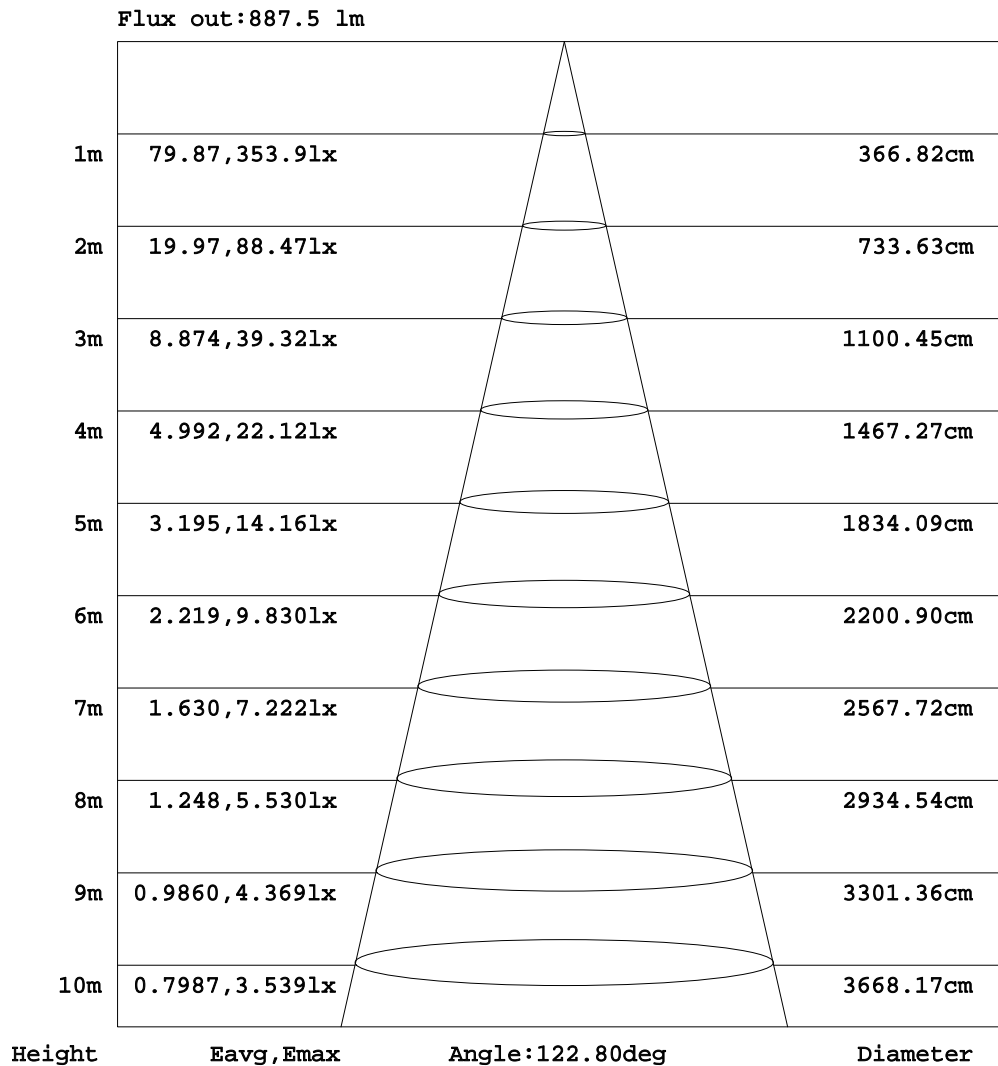


C Range: 0 - 360DEG
 C Interval: 15.0DEG
 Test Speed: HIGH
 Temperature: 25.0DEG
 Operators: Alan Wang
 Test Date: 27 June 2023

γ Range: 0 - 180DEG
 γ Interval: 1.0DEG
 Test System: EVERFINE GO-R5000_V2 SYSTEM V2.00.416
 Humidity: 42.7%
 Test Distance: 2.500m [K=1.0395]
 Remarks:

AAI Figure

Test:U:120.00V I:0.2164A P:24.530W PF:0.9446 Freq:60.00Hz Lamp Flux:1459.12x1 lm		
NAME: LED Ceiling light	TYPE:LED	WEIGHT:
SPEC.:ASD-LFC-LF-14D24-AC-BK 4000K	DIM.:	SERIAL No.:
MFR.:ASD Lighting Corp	SUR.:	Shielding Angle:



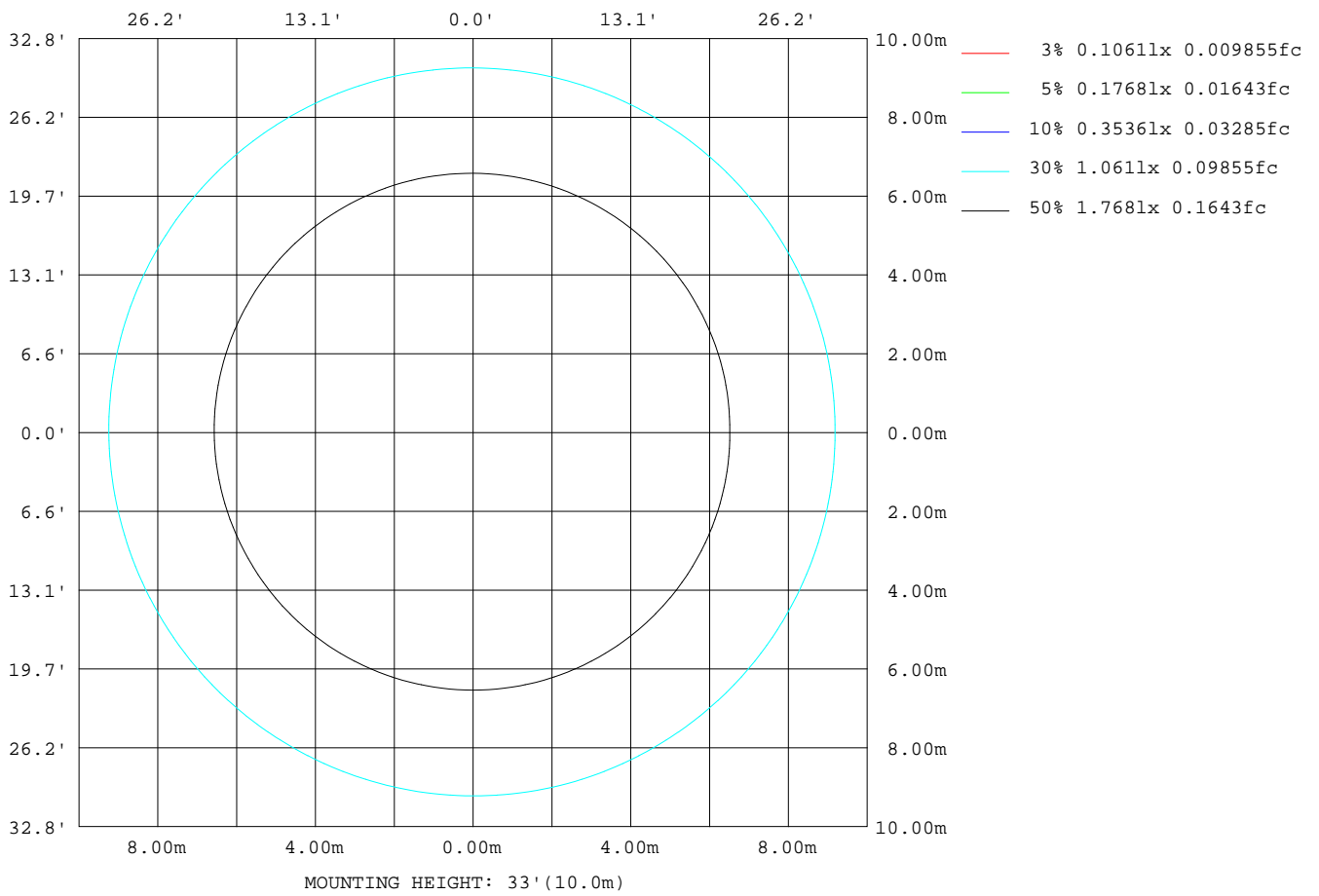
Note:The Curves indicate the illuminated area and the average illumination when the luminaire is at different distance.

C Range: 0 - 360DEG
 C Interval: 15.0DEG
 Test Speed: HIGH
 Temperature: 25.0DEG
 Operators: Alan Wang
 Test Date: 27 June 2023

γ Range: 0 - 180DEG
 γ Interval: 1.0DEG
 Test System: EVERFINE GO-R5000_V2 SYSTEM V2.00.416
 Humidity: 42.7%
 Test Distance: 2.500m [K=1.0395]
 Remarks:

ISOLUX DIAGRAM

Test:U:120.00V I:0.2164A P:24.530W PF:0.9446 Freq:60.00Hz Lamp Flux:1459.12x1 lm		
NAME: LED Ceiling light	TYPE:LED	WEIGHT:
SPEC.:ASD-LFC-LF-14D24-AC-BK 4000K	DIM.:	SERIAL No.:
MFR.: ASD Lighting Corp	SUR.:	Shielding Angle:



C Range: 0 - 360DEG
 C Interval: 15.0DEG
 Test Speed: HIGH
 Temperature: 25.0DEG
 Operators: Alan Wang
 Test Date: 27 June 2023

γ Range: 0 - 180DEG
 γ Interval: 1.0DEG
 Test System: EVERFINE GO-R5000_V2 SYSTEM V2.00.416
 Humidity: 42.7%
 Test Distance: 2.500m [K=1.0395]
 Remarks:

LED Avg.L Report

Test:U:120.00V I:0.2164A P:24.530W PF:0.9446 Freq:60.00Hz Lamp Flux:1459.12x1 lm		
NAME: LED Ceiling light	TYPE:LED	WEIGHT:
SPEC.: ASD-LFC-LF-14D24-AC-BK 4000K	DIM.:	SERIAL No.:
MFR.: ASD Lighting Corp	SUR.:	Shielding Angle:

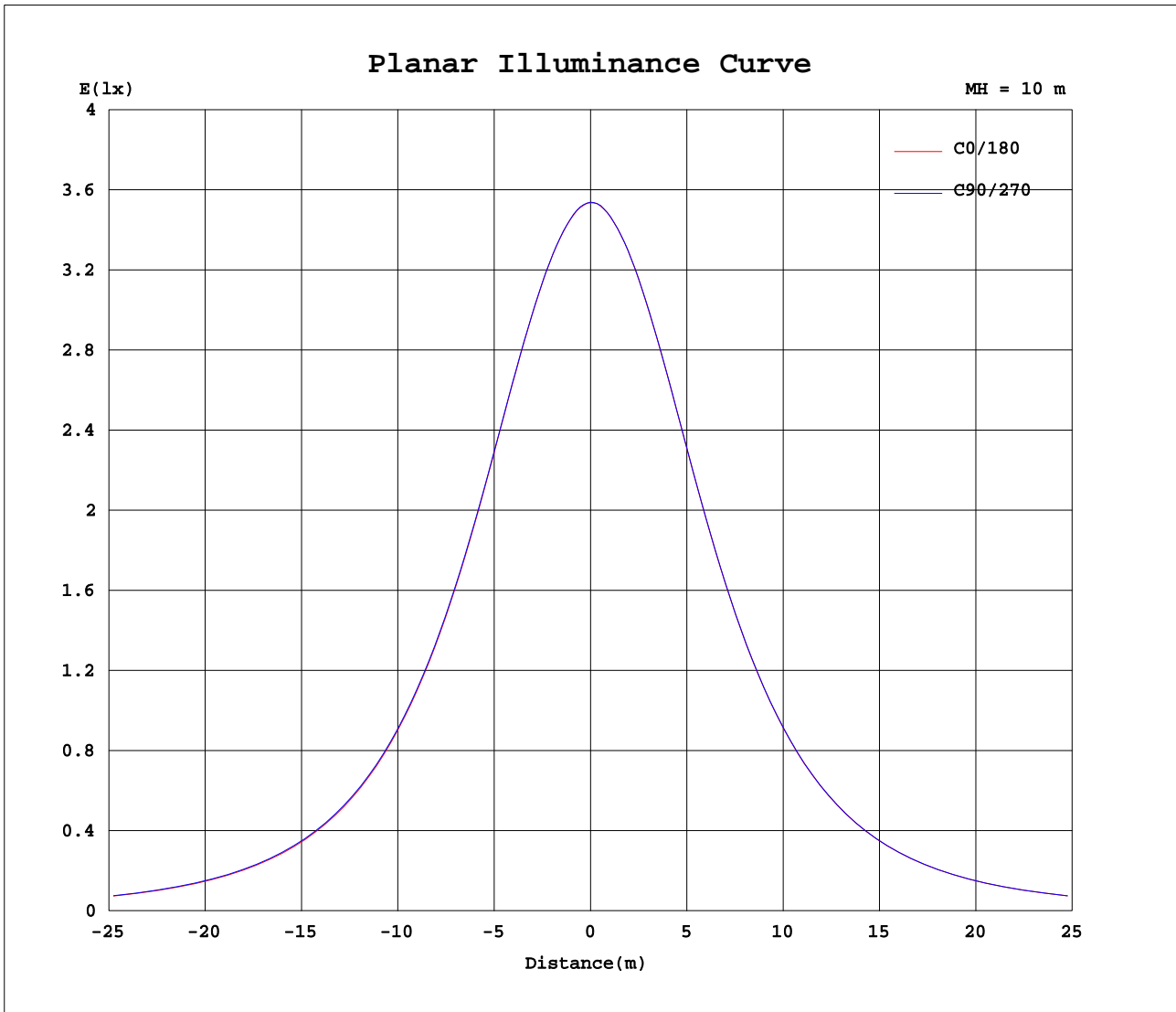
AvgL	cd/m2
L_0~180(65)av	2254
L_0~180(75)av	2426
L_0~180(85)av	3916
L_90~270(65)av	2278
L_90~270(75)av	2456
L_90~270(85)av	3953
L_45(65)av	2266
L_45(75)av	2436
L_45(85)av	3947

Standard: GB/T 29293-2012

C Range: 0 - 360DEG
 C Interval: 15.0DEG
 Test Speed: HIGH
 Temperature: 25.0DEG
 Operators: Alan Wang
 Test Date: 27 June 2023

γ Range: 0 - 180DEG
 γ Interval: 1.0DEG
 Test System: EVERFINE GO-R5000_V2 SYSTEM V2.00.416
 Humidity: 42.7%
 Test Distance: 2.500m [K=1.0395]
 Remarks:

Planar Illuminance Curve



C Range: 0 - 360DEG
 C Interval: 15.0DEG
 Test Speed: HIGH
 Temperature: 25.0DEG
 Operators: Alan Wang
 Test Date: 27 June 2023

γ Range: 0 - 180DEG
 γ Interval: 1.0DEG
 Test System: EVERFINE GO-R5000_V2 SYSTEM V2.00.416
 Humidity: 42.7%
 Test Distance: 2.500m [K=1.0395]
 Remarks:

LUMINOUS DISTRIBUTION INTENSITY DATA

Test:U:120.00V I:0.2164A P:24.530W PF:0.9446 Freq:60.00Hz Lamp Flux:1459.12x1 lm		
NAME: LED Ceiling light	TYPE:LED	WEIGHT:
SPEC.:ASD-LFC-LF-14D24-AC-BK 4000K	DIM.:	SERIAL No.:
MFR.: ASD Lighting Corp	SUR.:	Shielding Angle:

Table--1

UNIT: cd

C(DEG) γ (DEG)	0	15	30	45	60	75	90	105	120	135	150	165	180	195	210	225	240	255	270
0	354	354	353	354	354	354	354	354	354	354	354	354	354	354	353	354	354	354	354
5	351	351	351	352	351	352	352	352	352	352	352	353	353	353	353	353	353	353	353
10	348	348	347	348	347	348	348	348	348	348	348	349	349	350	349	350	350	350	349
15	342	342	342	342	342	342	342	342	343	343	343	344	344	344	345	345	345	345	344
20	334	334	334	334	334	335	335	335	335	335	336	336	337	337	338	338	338	337	337
25	324	324	324	324	324	324	324	324	325	325	325	326	326	327	327	328	327	327	327
30	310	310	310	311	311	311	311	311	311	311	312	312	313	313	314	314	314	314	314
35	294	294	295	295	295	296	295	295	295	296	296	296	297	298	298	298	298	298	298
40	276	276	276	277	277	278	277	277	277	277	277	278	279	280	280	280	280	280	279
45	255	256	256	257	257	258	257	257	257	257	257	257	258	259	260	260	260	259	259
50	233	233	234	235	235	235	235	235	234	234	234	235	236	237	237	237	237	237	237
55	208	209	210	211	211	211	211	211	210	210	210	210	211	212	212	212	212	212	212
60	183	184	185	185	186	186	186	185	185	184	184	185	186	186	187	187	186	186	186
65	157	158	158	159	160	160	160	159	158	158	158	158	159	160	160	160	160	159	159
70	130	131	132	133	133	134	133	132	132	131	131	131	132	132	132	132	132	132	132
75	104	104	105	106	107	107	107	106	105	104	104	103	105	105	105	105	104	104	104
80	77.3	78.2	79.2	80.0	80.3	80.2	79.7	78.7	77.9	77.0	76.5	76.3	77.1	77.0	76.9	76.9	76.8	76.5	76.5
85	57.3	58.3	59.3	60.0	60.2	60.0	59.4	58.5	57.6	56.7	56.0	55.5	55.9	55.7	55.5	55.4	55.2	54.9	54.8
90	45.6	46.7	47.8	48.4	48.9	48.6	47.8	46.8	45.8	44.7	43.8	43.1	42.7	42.3	42.0	41.8	41.7	41.7	42.0
95	44.5	45.5	46.5	47.2	47.5	47.3	46.6	45.6	44.5	43.6	42.7	41.9	41.6	41.2	40.9	40.6	40.4	40.3	40.4
100	44.5	45.6	46.5	47.2	47.5	47.3	46.6	45.7	44.7	43.9	43.0	42.2	41.9	41.5	41.1	40.9	40.6	40.5	40.6
105	45.0	46.1	46.9	47.5	47.7	47.6	47.1	46.2	45.5	44.6	43.7	42.9	42.6	42.2	41.8	41.5	41.3	41.1	41.3
110	45.4	46.4	47.0	47.6	47.8	47.8	47.3	46.6	46.0	45.0	44.2	43.4	43.1	42.7	42.4	42.1	41.8	41.7	41.8
115	45.5	46.4	47.1	47.6	47.8	47.8	47.4	46.7	46.1	45.3	44.5	43.7	43.4	43.1	42.8	42.5	42.2	42.1	42.1
120	45.5	46.2	46.9	47.4	47.6	47.6	47.2	46.7	46.0	45.3	44.6	43.9	43.5	43.2	42.9	42.7	42.4	42.3	42.4
125	45.3	45.9	46.6	47.0	47.2	47.3	46.9	46.4	45.7	45.2	44.5	43.9	43.5	43.2	42.9	42.7	42.5	42.4	42.4
130	45.0	45.6	46.3	46.6	46.8	46.8	46.5	46.0	45.4	44.9	44.3	43.8	43.4	43.2	42.9	42.7	42.5	42.4	42.5
135	44.9	45.5	46.0	46.3	46.4	46.4	46.2	45.7	45.1	44.6	44.1	43.7	43.4	43.2	42.9	42.8	42.7	42.5	42.7
140	44.9	45.3	45.8	46.0	46.2	46.0	45.7	45.6	45.0	44.5	44.0	43.8	43.5	43.2	43.1	43.0	42.9	42.9	43.0
145	44.5	44.8	45.4	45.6	45.6	45.5	45.4	45.0	44.4	44.0	44.0	43.8	43.6	43.3	43.2	43.1	43.0	43.1	43.2
150	43.9	44.2	44.7	44.9	45.0	45.0	44.7	44.4	44.1	43.7	43.3	42.8	43.5	43.3	43.1	43.0	42.9	42.9	43.1
155	43.4	43.6	43.9	44.0	44.2	44.2	44.1	43.9	43.6	43.4	43.1	42.8	43.2	42.9	42.8	42.7	42.5	42.4	42.3
160	42.3	42.4	42.6	42.7	43.1	43.4	43.4	43.3	43.1	43.0	42.7	42.5	42.9	42.7	42.4	42.2	41.9	41.9	42.0
165	41.4	41.5	41.9	42.0	42.4	42.5	42.4	42.3	42.2	42.1	42.1	41.8	42.1	41.9	41.7	41.6	41.4	42.0	42.1
170	35.5	35.8	36.1	36.3	36.7	36.9	37.0	37.1	37.2	37.2	37.0	36.9	37.3	37.4	37.1	36.8	36.4	36.1	36.0
175	26.1	26.3	26.6	27.1	27.4	27.9	28.0	28.2	28.2	28.1	28.0	27.8	28.8	28.9	28.7	28.3	28.1	27.9	27.6
180	23.5	15.9	16.0	16.1	16.2	16.3	16.3	16.1	15.2	16.5	17.6	17.4	23.4	23.5	23.4	23.4	23.5	23.4	23.3

C Range: 0 - 360DEG
 C Interval: 15.0DEG
 Test Speed: HIGH
 Temperature: 25.0DEG
 Operators: Alan Wang
 Test Date: 27 June 2023

γ Range: 0 - 180DEG
 γ Interval: 1.0DEG
 Test System: EVERFINE GO-R5000_V2 SYSTEM V2.00.416
 Humidity: 42.7%
 Test Distance: 2.500m [K=1.0395]
 Remarks:

LUMINOUS DISTRIBUTION INTENSITY DATA

Test:U:120.00V I:0.2164A P:24.530W PF:0.9446 Freq:60.00Hz Lamp Flux:1459.12x1 lm		
NAME: LED Ceiling light	TYPE:LED	WEIGHT:
SPEC.:ASD-LFC-LF-14D24-AC-BK 4000K	DIM.:	SERIAL No.:
MFR.:ASD Lighting Corp	SUR.:	Shielding Angle:

Table--2

UNIT: cd

C(DEG)\ γ (DEG)	285	300	315	330	345														
0	354	354	354	354	354														
5	352	352	352	352	352														
10	349	349	349	348	348														
15	344	344	343	343	343														
20	337	336	336	335	335														
25	326	326	325	325	325														
30	313	312	312	311	311														
35	297	296	296	295	295														
40	279	278	277	277	277														
45	258	258	257	256	256														
50	236	235	235	234	234														
55	211	210	210	209	209														
60	186	185	184	184	184														
65	159	158	158	157	157														
70	131	131	131	130	130														
75	104	104	104	104	104														
80	76.6	76.7	76.9	77.0	77.6														
85	55.1	55.6	56.1	56.5	57.2														
90	42.3	42.7	43.2	43.9	44.9														
95	40.7	41.3	42.0	42.8	43.6														
100	40.9	41.4	42.1	42.8	43.6														
105	41.5	42.0	42.6	43.4	44.2														
110	42.0	42.5	43.1	43.8	44.6														
115	42.4	42.8	43.4	44.0	44.8														
120	42.5	43.0	43.5	44.1	44.8														
125	42.6	43.0	43.5	44.0	44.7														
130	42.7	43.1	43.5	44.0	44.5														
135	42.9	43.2	43.6	44.1	44.6														
140	43.2	43.4	43.9	44.3	44.6														
145	43.4	43.5	43.9	44.2	44.5														
150	43.3	43.4	43.5	43.1	43.6														
155	42.3	42.7	42.8	43.0	43.2														
160	41.9	42.3	42.6	42.3	42.4														
165	42.2	42.2	42.1	41.8	41.6														
170	36.1	36.0	36.2	36.2	36.0														
175	27.4	27.2	27.1	26.9	26.9														
180	23.1	23.0	22.9	22.7	22.7														

C Range: 0 - 360DEG
 C Interval: 15.0DEG
 Test Speed: HIGH
 Temperature: 25.0DEG
 Operators: Alan Wang
 Test Date: 27 June 2023

γ Range: 0 - 180DEG
 γ Interval: 1.0DEG
 Test System: EVERFINE GO-R5000_V2 SYSTEM V2.00.416
 Humidity: 42.7%
 Test Distance: 2.500m [K=1.0395]
 Remarks: