



LED SURFACE MINI PANEL

► **DESIGN & OPTIONS** - LED SURFACE MINI PANEL has a classic, low-profile design that gives it a sleek look with efficient lighting. The modern LED dimmers provide smooth dimming capabilities ranging from 10% to 100%. The 120° beam angle grants you smooth and even lighting. It is also CCT selectable, letting you set it to 3,000K, 4,000K or 5,000K with a simple switch. This fixture comes in four sizes: 5", 7", 9" and 12", and a WHITE or BLACK finish.



Models with a built-in PIR motion sensor automatically turn off in the absence of motion.



Models with a built-in battery back-up provide 90 minutes of power in case of emergency.

► **INSTALLATION** - Installation is quick and easy: just attach the bracket to the outlet box with screws, connect the wires, and fix the lamp on the bracket. Screws, wire nuts and all installation accessories are provided. The fixture can be installed on either an existing outlet box or a remodeled can by using a retrofit kit with universal TP24 or E26 connectors (sold separately). Refer to install instructions for detailed steps.

► **APPLICATION** - The LED SURFACE MINI PANEL provides bright, yet smooth lighting for your family room, bedroom, hallway, corridor, or any other common area in your living space. It is also suitable for Damp Locations, making it perfect for kitchens and garages as well. It can also be used as additional lighting to an already existing ceiling light.

► **ENERGY SAVINGS & EFFICIENCY** - With a lifespan of 50,000 hours, these fixtures are made to last decades under normal operation! This fixture can cut your electric bill by up to 80% instantly and will save you a significant amount of money in its lifetime.

► **CERTIFICATION & WARRANTY** - Buy with confidence: ASD provides a 5-year limited warranty along with ETL certification to guarantee top quality products and safety!

Energy Star classification allows participation in rebates; please check the rebate programs available in your state.

Catalog number	
Notes	
Type	



Finish:	White
	Black

Model	Watts	Voltage	Dimmable	Lumens	CCT	Finish	Dimensions (LxWxH)	Type	Options
MPR ROUND									
ASD-MPR-5D10CC-WH	10W	120 V	TRIAC	667/754/695 lm	3CCT (3,000 K/4,000 K/5,000 K)	White	5-5/16" x 5-5/16" x 1"	Round	-
ASD-MPR-5D10CC-WH-6pack	10W	120 V	TRIAC	667/754/695 lm	3CCT (3,000 K/4,000 K/5,000 K)	White	5-5/16" x 5-5/16" x 1"	Round	-
ASD-MPR-7D15CC-WH	15W	120 V	TRIAC	1,061/1,364/1,152 lm	3CCT (3,000 K/4,000 K/5,000 K)	White	7-1/8" x 7-1/8" x 1"	Round	-
ASD-MPR-7D15CC-WH-6pack	15W	120 V	TRIAC	1,061/1,364/1,152 lm	3CCT (3,000 K/4,000 K/5,000 K)	White	7-1/8" x 7-1/8" x 1"	Round	-
ASD-MPR-7D15CC-BK	15W	120 V	TRIAC	1,061/1,364/1,152 lm	3CCT (3,000 K/4,000 K/5,000 K)	Black	7-1/8" x 7-1/8" x 1"	Round	-
ASD-MPR-9D18CC-WH	18W	120 V	TRIAC	1,348/1,522/1,306 lm	3CCT (3,000 K/4,000 K/5,000 K)	White	8-7/8" x 8-7/8" x 1"	Round	-
ASD-MPR-9D18CC-WH-6pack	18W	120 V	TRIAC	1,348/1,522/1,306 lm	3CCT (3,000 K/4,000 K/5,000 K)	White	8-7/8" x 8-7/8" x 1"	Round	-
ASD-MPR-9D18CC-BK	18W	120 V	TRIAC	1,348/1,522/1,306 lm	3CCT (3,000 K/4,000 K/5,000 K)	Black	8-7/8" x 8-7/8" x 1"	Round	-
ASD-MPR-12D24CC-WH	24W	120 V	TRIAC	1,721/2,218/2,028 lm	3CCT (3,000 K/4,000 K/5,000 K)	White	11-13/16" x 11-13/16" x 1"	Round	-
MPS SQUARE									
ASD-MPS-7D12CC-WH	12W	120 V	TRIAC	914/1,034/1,012 lm	3CCT (3,000 K/4,000 K/5,000 K)	White	7-1/8" x 7-1/8" x 5/8"	Square	-
ASD-MPS-7D12CC-WH-6pack	12W	120 V	TRIAC	914/1,034/1,012 lm	3CCT (3,000 K/4,000 K/5,000 K)	White	7-1/8" x 7-1/8" x 5/8"	Square	-
ASD-MPS-7D12CC-BK	12W	120 V	TRIAC	914/1,034/1,012 lm	3CCT (3,000 K/4,000 K/5,000 K)	Black	7-1/8" x 7-1/8" x 5/8"	Square	-
ASD-MPS-9D18CC-WH	18W	120 V	TRIAC	1,139/1,276/1,229 lm	3CCT (3,000 K/4,000 K/5,000 K)	White	8-7/8" x 8-7/8" x 5/8"	Square	-
ASD-MPS-9D18CC-WH-6pack	18W	120 V	TRIAC	1,139/1,276/1,229 lm	3CCT (3,000 K/4,000 K/5,000 K)	White	8-7/8" x 8-7/8" x 5/8"	Square	-
ASD-MPS-9D18CC-BK	18W	120 V	TRIAC	1,139/1,276/1,229 lm	3CCT (3,000 K/4,000 K/5,000 K)	Black	8-7/8" x 8-7/8" x 5/8"	Square	-
MPR-MS ROUND WITH MOTION SENSOR									
ASD-MPR-9N18CC-MS-WH	18W	120 V	-	1,300/1,430/1,340 lm	3CCT (3,000 K/4,000 K/5,000 K)	White	8-3/4" x 8-3/4" x 3/4"	Round	Motion sensor
MPR-EM ROUND WITH BATTERY BACK-UP									
ASD-MPR-7D15CC-EM-WH	15W	120 V	TRIAC	1,122/1,209/1,111 lm	3CCT (3,000 K/4,000 K/5,000 K)	White	7-1/8" x 7-1/8" x 1 3/4"	Round	6W Battery back up
ASD-MPR-9D18CC-EM-WH	18W	120 V	TRIAC	1,412/1,674/1,437 lm	3CCT (3,000 K/4,000 K/5,000 K)	White	8-7/8" x 8-7/8" x 1 3/4"	Round	12W Battery back up
ASD-SP7-MPR-WH	Sub-plate for LED Round Surface Mini Panel 7"						7-1/8" x 7-1/8" x 1-3/4"	Round	-

For most up-to-date spec sheets please refer to asd-lighting.com

ASD LIGHTING CORP

E-mail: orders@asd-lighting.com | Web site: www.asd-lighting.com





LED SURFACE MINI PANEL

PRODUCT SPECIFICATIONS:

Construction & Materials				
Housing	Plastic			
Lens	Acrylic			
Finish color	White, Black			
Weight	ASD-MPR-5D10CC-WH	0.5 lb (0.2 kg)	ASD-MPS-7D12CC-WH	0.9 lb (0.4 kg)
	ASD-MPR-5D10CC-WH-6pack	3.4 lb (1.6 kg)	ASD-MPS-7D12CC-WH-6pack	5.7 lb (2.6 kg)
	ASD-MPR-7D15CC-WH	0.8 lb (0.4 kg)	ASD-MPS-7D12CC-BK	0.9 lb (0.4 kg)
	ASD-MPR-7D15CC-WH-6pack	4.9 lb (2.2 kg)	ASD-MPS-9D18CC-WH	1.4 lb (0.6 kg)
	ASD-MPR-7D15CC-BK	0.8 lb (0.4 kg)	ASD-MPS-9D18CC-WH-6pack	8.5 lb (3.8 kg)
	ASD-MPR-9D18CC-WH	1.1 lb (0.5 kg)	ASD-MPS-9D18CC-BK	1.4 lb (0.6 kg)
	ASD-MPR-9D18CC-WH-6pack	6.7 lb (3.1 kg)	ASD-MPR-9N18CC-MS-WH	1.1 lb (0.5 kg)
	ASD-MPR-9D18CCA-BK	1.1 lb (0.5 kg)	ASD-MPR-7D15CC-EM-WH	1.6 lb (0.7 kg)
ASD-MPR-12D24CC-WH	2.2 lb (1 kg)	ASD-MPR-9D18CC-EM-WH	2.1 lb (1 kg)	
Environmental system				
Work environment	Suitable for Damp Locations			
Operating temperature	-40°F to 113°F (-40°C to 45°C)	for MS model: -4°F to 104°F (-20°C to 40°C)		for EM models: -4°F to 122°F (-20°C to 50°C)
L-70 Life	> 50,000 hrs			
Optical system				
Luminous flux	ASD-MPR-5D10CC-WH	667/754/695 lm	ASD-MPS-7D12CC-WH	914/1,034/1,012 lm
	ASD-MPR-5D10CC-WH-6pack		ASD-MPS-7D12CC-WH-6pack	
	ASD-MPR-7D15CC-WH		ASD-MPS-7D12CC-BK	
	ASD-MPR-7D15CC-WH-6pack	1,061/1,364/1,152 lm	ASD-MPS-9D18CC-WH	1,139/1,276/1,229 lm
	ASD-MPR-7D15CC-BK		ASD-MPS-9D18CC-WH-6pack	
	ASD-MPR-9D18CC-WH		ASD-MPS-9D18CC-BK	
	ASD-MPR-9D18CC-WH-6pack	1,348/1,522/1,306 lm	ASD-MPR-9N18CC-MS-WH	1,300/1,430/1,340 lm
	ASD-MPR-9D18CCA-BK		ASD-MPR-7D15CC-EM-WH	1,122/1,209/1,111 lm
ASD-MPR-12D24CC-WH	ASD-MPR-9D18CC-EM-WH		1,412/1,674/1,437 lm	
Color temperature	3CCT (3,000/4,000/5,000 K)			
CRI	> 80			
Electrical system				
Input voltage	120 V			
Max input current	ASD-MPR-5D10CC-WH	0.09 A	ASD-MPS-7D12CC-WH	0.11 A
	ASD-MPR-5D10CC-WH-6pack		ASD-MPS-7D12CC-WH-6pack	
	ASD-MPR-7D15CC-WH		ASD-MPS-7D12CC-BK	
	ASD-MPR-7D15CC-WH-6pack	0.1375 A	ASD-MPS-9D18CC-WH	0.165 A
	ASD-MPR-7D15CC-BK		ASD-MPS-9D18CC-WH-6pack	
	ASD-MPR-9D18CC-WH		ASD-MPS-9D18CC-BK	
	ASD-MPR-9D18CC-WH-6pack	0.165 A	ASD-MPR-9N18CC-MS-WH	0.1375 A
	ASD-MPR-9D18CCA-BK		ASD-MPR-7D15CC-EM-WH	
ASD-MPR-12D24CC-WH	ASD-MPR-9D18CC-EM-WH		0.165 A	
Inrush current (Action time)	ASD-MPR-5D10CC-WH	0.08 A (0.05 S)	ASD-MPS-7D12CC-WH	0.1 A (0.05 S)
	ASD-MPR-5D10CC-WH-6pack		ASD-MPS-7D12CC-WH-6pack	
	ASD-MPR-7D15CC-WH		ASD-MPS-7D12CC-BK	
	ASD-MPR-7D15CC-WH-6pack	0.125 A (0.05 S)	ASD-MPS-9D18CC-WH	0.15 A (0.05 S)
	ASD-MPR-7D15CC-BK		ASD-MPS-9D18CC-WH-6pack	
	ASD-MPR-9D18CC-WH		ASD-MPS-9D18CC-BK	
	ASD-MPR-9D18CC-WH-6pack	0.15 A (0.05 S)	ASD-MPR-9N18CC-MS-WH	0.125 A (0.1 S)
	ASD-MPR-9D18CCA-BK		ASD-MPR-7D15CC-EM-WH	
ASD-MPR-12D24CC-WH	ASD-MPR-9D18CC-EM-WH		0.15 A (0.1 S)	
Off state power	0W			
Power consumption	ASD-MPR-5D10CC-WH	10W	ASD-MPS-7D12CC-WH	12W
	ASD-MPR-5D10CC-WH-6pack		ASD-MPS-7D12CC-WH-6pack	
	ASD-MPR-7D15CC-WH		ASD-MPS-7D12CC-BK	
	ASD-MPR-7D15CC-WH-6pack	15W	ASD-MPS-9D18CC-WH	18W
	ASD-MPR-7D15CC-BK		ASD-MPS-9D18CC-WH-6pack	
	ASD-MPR-9D18CC-WH		ASD-MPS-9D18CC-BK	
	ASD-MPR-9D18CC-WH-6pack	18W	ASD-MPR-9N18CC-MS-WH	15W
	ASD-MPR-9D18CCA-BK		ASD-MPR-7D15CC-EM-WH	
ASD-MPR-12D24CC-WH	ASD-MPR-9D18CC-EM-WH		18W	
Power factor	> 0.9			
Output voltage	-		for EM models: 33 V	
Max output current	-	for ASD-MPR-7D15CC-EM-WH model: 350 mA		for ASD-MPR-9D18CC-EM-WH model: 450 mA
Surge protection DM/CM	1.25 kV / 1.25 kV			

For most up-to-date spec sheets please refer to asd-lighting.com

ASD LIGHTING CORP

E-mail: orders@asd-lighting.com | Web site: www.asd-lighting.com





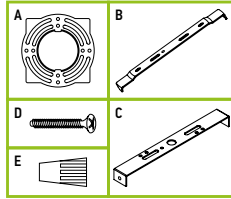
LED SURFACE MINI PANEL

Dimming compatible controls *				Regular and voluntary certifications
Brand	Lutron	Leviton		5-year limited warranty
Models	MACL-153MLH	STCL-153PH	DSL06	cETLus certified 4001256
	DVCL-153PR	P-PKG1W	RNL06	Energy Star listed (except EM models)

* The list of dimmers is relevant for models without a motion sensor.

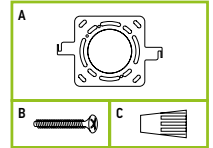
PACKAGE CONTENTS FOR ROUND FIXTURE:

Description	Q-ty
LED Round Surface Mini Panel	1
Mounting plate (A) for regular models	1
Bracket (B) for MS model	1
Bracket (C) for EM model	1
Screw (D)	2
Wire nut (E)	3
Box	1



PACKAGE CONTENTS FOR SQUARE FIXTURE:

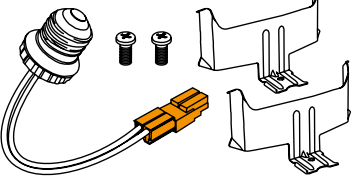
Description	Q-ty
LED Square Surface Mini Panel	1
Mounting plate (A)	1
Screw (B)	2
Wire nut (C)	3
Box	1



ACCESSORIES (sold separately):

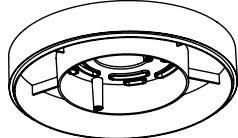
Retrofit kit with E26 base and TP24 connector for LED Round Surface Mini Panel 5"

ASD-RK4-MPR



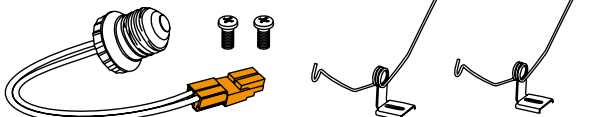
Sub-plate for LED Round Surface Mini Panel 7"

ASD-SP7-MPR-WH



Retrofit kit with E26 base and TP24 connector for LED Round Surface Mini Panel 7/9/12"

ASD-RK6-MPR



ACCESSORY COMPATIBILITY LIST:

Accessories			
Models	Retrofit kit with E26 base and TP24 connector for LED Round Surface Mini Panel 5" ASD-RK4-MPR	Retrofit kit with E26 base and TP24 connector for LED Round Surface Mini Panel 7/9/12" ASD-RK6-MPR	Sub-plate for LED Round Surface Mini Panel 7" ASD-SP7-MPR-WH
ASD-MPR-5D10CC-WH	•		
ASD-MPR-7D15CC-WH		•	•
ASD-MPR-7D15CC-BK		•	
ASD-MPR-9D18CC-WH		•	
ASD-MPR-9D18CCA-BK		•	
ASD-MPR-12D24CC-WH		•	
ASD-MPS-7D12CC-WH			
ASD-MPS-7D12CC-BK			
ASD-MPS-9D18CC-WH			
ASD-MPS-9D18CC-BK			
ASD-MPR-9N18CC-MS-WH		•	
ASD-MPR-7D15CC-EM-WH			
ASD-MPR-9D18CC-EM-WH			

For most up-to-date spec sheets please refer to asd-lighting.com

ASD LIGHTING CORP

E-mail: orders@asd-lighting.com | Web site: www.asd-lighting.com





LED SURFACE MINI PANEL

BUILT-IN MOTION SENSOR INFORMATION

Sensor has two selectable modes:

- **Day mode**

The light is ON only when motion detected.

The light sensing option is OFF.

Detection range: 9.8-16.4 ft

Time: 45 sec.

- **Night Mode**

The light is ON when illumination is <70 Lux (6.5 Fc) and motion detected.




Detection range: 9.8-16.4 ft

Time: 45 sec.

If illumination is >200 lux (18.6 Fc) the light is always OFF.



BUILT-IN BATTERY BACK-UP INFORMATION

Operating condition	 Blinking
Emergency mode	 OFF
Test switch	

1. Indicator Light is Blinking: Battery back-up recharging.

2. Indicator Light is OFF: Battery back-up is full charge; Battery back-up is working.

3. In order to test the battery back-up press the test switch one time. To turn off the emergency power state press test switch one more time.

Specifications		
Input voltage	100-277 V 50/60 Hz	
AC Input current	110 mA max.	
AC Input power rating	5.0W max.	
Output current and voltage	200 mA 20-36Vdc	360 mA 20-36 Vdc
Output power	6W	12W
Lumens	400 lm	600 lm
Emergency time	min 90 minutes	
Warranty	5 Years	
Indicator light	Illuminated test switch	
Battery	Li-ion battery - 11.1 V/2200 mAh	
Battery charging current	440 mA	
Charging time	8 Hours	
Temperature rating (Ambient)	32°F to 113°F (0°C to 45°C)	

INSTALLATION GUIDE

IMPORTANT SAFETY INFORMATION:

Please read all the instructions below before installation.

- ▶ Make sure that the supply voltage corresponds to the rated product voltage.
- ▶ The product must be installed by a qualified electrician in accordance with the National Electrical Code and corresponding local codes.
- ▶ If the product is damaged, do not use it.

⚠ WARNING

RISK OF PERSONAL INJURY – READ and follow all WARNINGS and installation instructions. Keep or give to the owner for future reference.

Risk of cuts: Wear gloves to prevent cuts or abrasions when removing from carton, handling, installing, and maintaining this product.

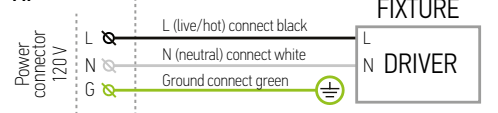
Risk of electric shock: This product must be installed in accordance with the applicable installation code by a person familiar with the construction and operation of the product and the hazards involved.

Risk of Fire: Minimum 194°F supply conductors. Consult a qualified electrician to ensure correct branch circuit conductor.

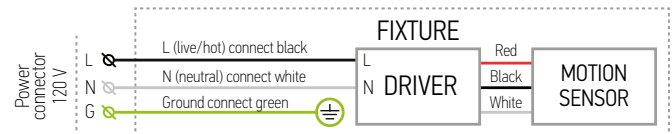
ASD® assumes no responsibility for claims arising out of improper or careless installation or handling of this product.

ELECTRICAL SCHEMATIC DIAGRAM:

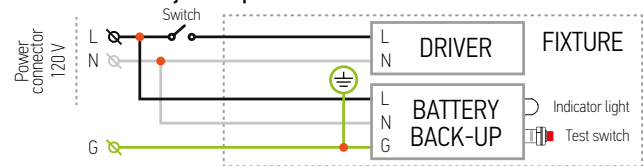
MP



MPR-MS with motion sensor



MPR-EM with battery back-up



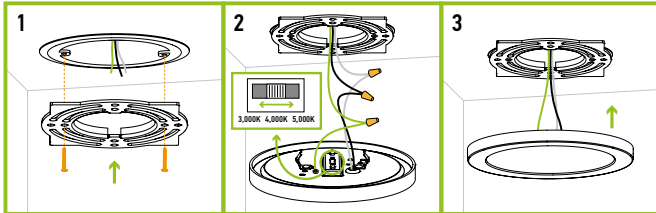
For most up-to-date spec sheets please refer to asd-lighting.com



LED SURFACE MINI PANEL

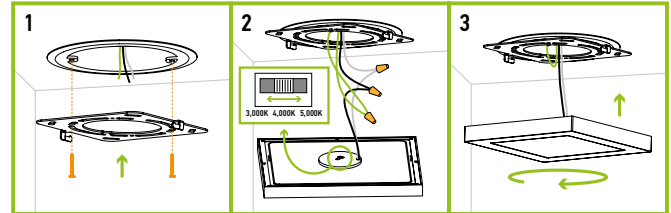
ROUND FIXTURE INSTALLATION:

1. Attach the mounting plate to the existing outlet box in the ceiling using two screws.
2. Choose preferred color temperature by adjusting the switch. Connect the wires: Black to Black, White to White, Ground to Ground. Secure the connection with wire nuts.
3. Insert the fixture to the bracket until it clicks.



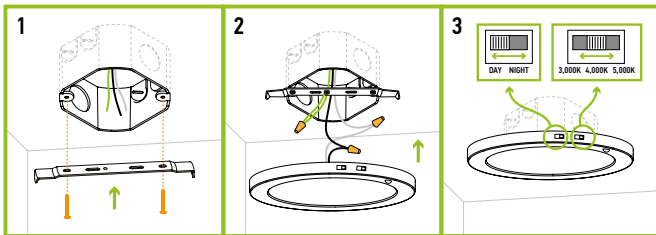
SQUARE FIXTURE INSTALLATION:

1. Attach the mounting plate to the existing outlet box in the ceiling using two screws.
2. Choose preferred color temperature by adjusting the switch. Connect the wires: Black to Black, White to White, Green to Green. Secure the connection with wire nuts.
3. Fix the fixture to the bracket and rotate it clockwise.



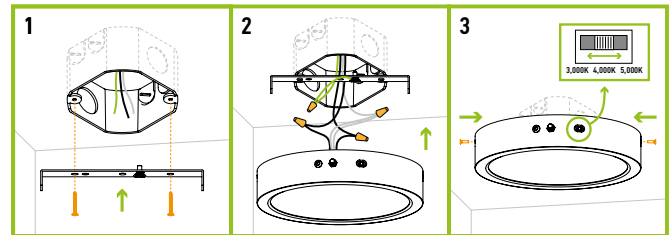
MOTION SENSOR FIXTURE INSTALLATION:

1. Attach the bracket to the existing outlet box in the ceiling using two screws.
2. Connect the wires: Black to Black, White to White, Ground to Ground. Secure the connection with the wire nuts. Insert the fixture to the bracket until it clicks.
3. Choose needed color temperature and motion sensor setting by adjusting switch position on the side of the fixture.



BATTERY BACK-UP FIXTURE INSTALLATION:

1. Unscrew the two fixture screws from both sides of the lamp. Remove the bracket and attach it to the existing outlet box in the ceiling using two screws. Connect the LED Emergency controller to the battery back-up.
2. Connect the wires: Black to Black, White to White, Green to Green. Secure the connection with wire nuts. Insert the fixture into the bracket and fix it with two fixture screws on both sides of the lamp.
3. Choose needed color temperature by adjusting switch position on the side of the fixture.

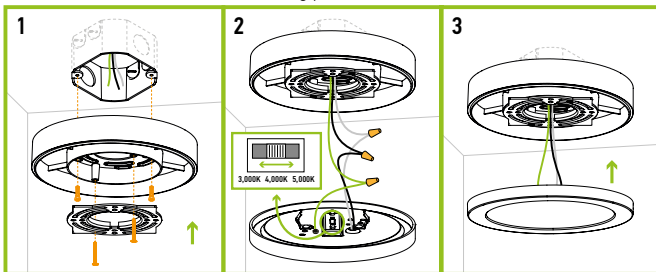


SUB-PLATE INSTALLATION

ASD-SP7-MPR-WH

sold separately:

1. Attach the mounting plate to the sub-plate with two screws. Place the sub-plate on the outlet box in the ceiling and fix it using another two screws.
2. Choose preferred color temperature by adjusting the switch. Connect the wires: Black to Black, White to White, Green to Green. Secure the connection with wire nuts.
3. Insert the fixture into the mounting plate until it clicks.

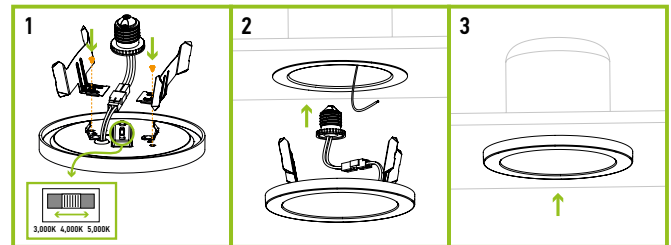


RETROFIT KIT FOR 5" FIXTURE

ASD-RK4-MPR

sold separately:

1. Attach spring-loaded clips to the 4" retrofit holes using short screws. Join the TP24 connector to the fixture wires and connect it to the E26 socket adapter. Choose preferred color temperature by adjusting the switch.
2. Screw the E26 socket adapter into the socket in the housing.
3. Press the fixture into the housing.



For most up-to-date spec sheets please refer to asd-lighting.com

ASD LIGHTING CORP

E-mail: orders@asd-lighting.com | Web site: www.asd-lighting.com



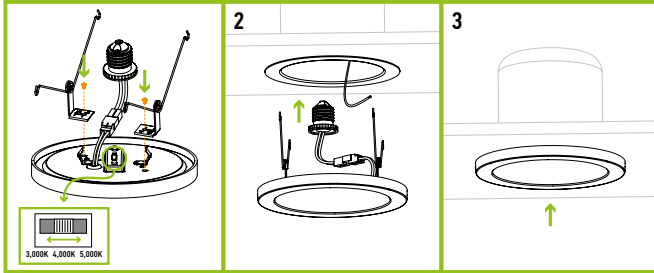


LED SURFACE MINI PANEL

RETROFIT KIT FOR 7/9/12" FIXTURE

ASD-RK6-MPR sold separately:

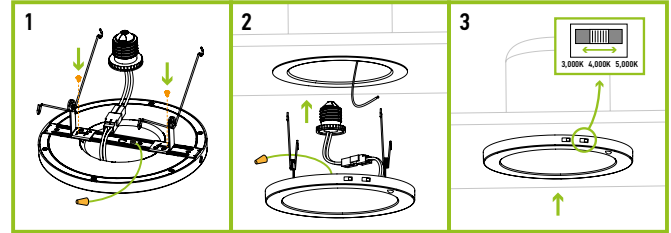
1. Attach spring-loaded clips to the 6" retrofit holes using short screws. Join the TP24 connector to the fixture wires and connect it to the E26 socket adapter. Choose preferred color temperature by adjusting the switch.
2. Screw the E26 socket adapter into the socket in the housing.
3. Press the fixture into the housing.



RETROFIT KIT FOR MOTION SENSOR FIXTURE

ASD-RK6-MPR sold separately:

1. Fix the bracket to the fixture until it clicks. Attach spring-loaded clips to the bracket using short screws. Join the TP24 connector to the fixture wires and connect it to the E26 socket adapter.
2. Screw the E26 socket adapter into the socket in the housing.
3. Press the fixture into the housing. Choose needed color temperature and motion sensor setting by adjusting switch position on the side of the fixture.



ORDERING INFORMATION

Model	UPC	Pcs. per carton	Carton size	Carton weight	GTIN 14
MPR ROUND					
ASD-MPR-5D10CC-WH	810050736282	12	13.2" x 10" x 6.1"	8.2 lb	50810050736287
ASD-MPR-5D10CC-WH-6pack	810050737654	2	14.8" x 9.1" x 6.9"	8.2 lb	10810050737651
ASD-MPR-7D15CC-WH	810050736275	12	16.5" x 10" x 7.9"	12.6 lb	30810050736276
ASD-MPR-7D15CC-WH-6pack	810050737661	2	17.1" x 9.4" x 8.7"	12.2 lb	10810050737668
ASD-MPR-7D15CC-BK	810050736732	12	16.5" x 10" x 7.9"	12.6 lb	30810050736733
ASD-MPR-9D18CC-WH	810050734622	12	19.7" x 10.2" x 9.6"	17.2 lb	30810050734623
ASD-MPR-9D18CC-WH-6pack	810050737678	2	17.3" x 11.4" x 10"	17.2 lb	10810050737675
ASD-MPR-9D18CCA-BK	810050736749	12	19.7" x 10.2" x 9.6"	15.7 lb	30810050736740
ASD-MPR-12D24CC-WH	810050736299	4	13.2" x 6.9" x 12.6"	10.5 lb	30810050736290
MPS SQUARE					
ASD-MPS-7D12CC-WH	810050737616	12	16.5" x 10" x 7.9"	14.2 lb	10810050737613
ASD-MPS-7D12CC-WH-6pack	810050737623	2	17.1" x 9.4" x 8.7"	13.8 lb	10810050737620
ASD-MPS-7D12CC-BK	810050738866	12	16.5" x 10" x 7.9"	14.2 lb	10810050738863
ASD-MPS-9D18CC-WH	810050737630	12	19.7" x 10.2" x 9.6"	20.6 lb	10810050737637
ASD-MPS-9D18CC-WH-6pack	810050737647	2	17.3" x 11.4" x 10"	20.8 lb	10810050737644
ASD-MPS-9D18CC-BK	810050738873	12	19.7" x 10.2" x 9.6"	20.6 lb	10810050738870
MPR-MS ROUND WITH MOTION SENSOR					
ASD-MPR-9N18CC-MS-WH	810050734493	12	19.7" x 10.2" x 9.6"	17.2 lb	30810050734494
MPR-EM ROUND WITH BATTERY BACK-UP					
ASD-MPR-7D15CC-EM-WH	810050738040	12	22.2" x 19.9" x 10.2"	22.6 lb	10810050738047
ASD-MPR-9D18CC-EM-WH	810050738057	12	23.4" x 22.2" x 12"	33 lb	10810050738054
ASD-SP7-MPR-WH	810050738064	12	14.8" x 7.9" x 7.7"	5.1 lb	10810050738061

ACCESSORIES:

Model	Name	Weight	Dimensions		UPC			
ASD-RK4-MPR	Retrofit kit with E26 base and TP24 connector for LED Round Surface Mini Panel 5"	0.1 lb	3-1/8" x 1-1/4" x 1-7/8"		810050731089			
ASD-RK6-MPR	Retrofit kit with E26 base and TP24 connector for LED Round Surface Mini Panel 7/9/12"	0.1 lb	6-3/4" x 15/16" x 3-1/8"		810050731096			
Model	Pcs. in middle box	Middle box size	Middle box weight	GTIN 14 in middle box	Pcs. per carton	Carton size	Carton weight	GTIN 14 in carton
ASD-RK4-MPR	12	7.1" x 5.1" x 5.7"	1.3 lb	10810050731086	48	11" x 7.7" x 12.4"	6 lb	20810050731083
ASD-RK6-MPR	12	7.1" x 5.1" x 5.7"	1.4 lb	10810050731093	48	11" x 7.7" x 12.4"	6.3 lb	20810050731090

For most up-to-date spec sheets please refer to asd-lighting.com

ASD LIGHTING CORP

E-mail: orders@asd-lighting.com | Web site: www.asd-lighting.com

