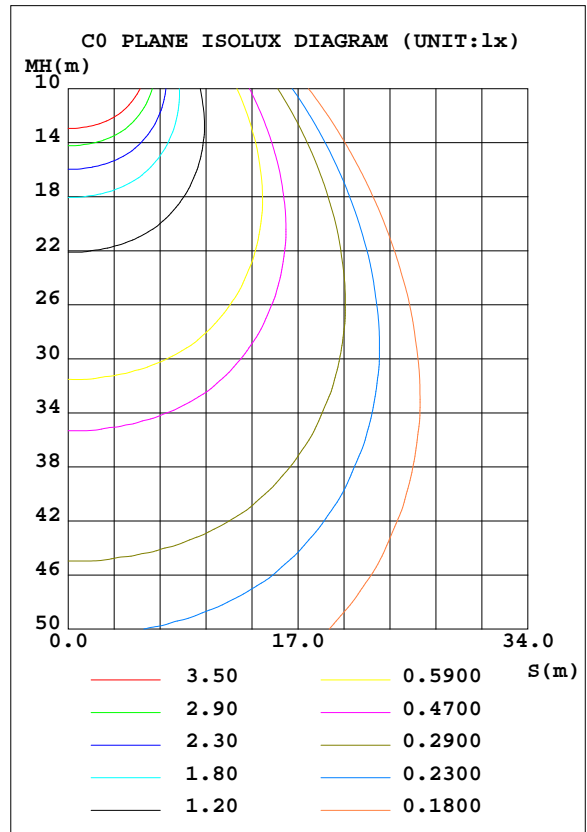
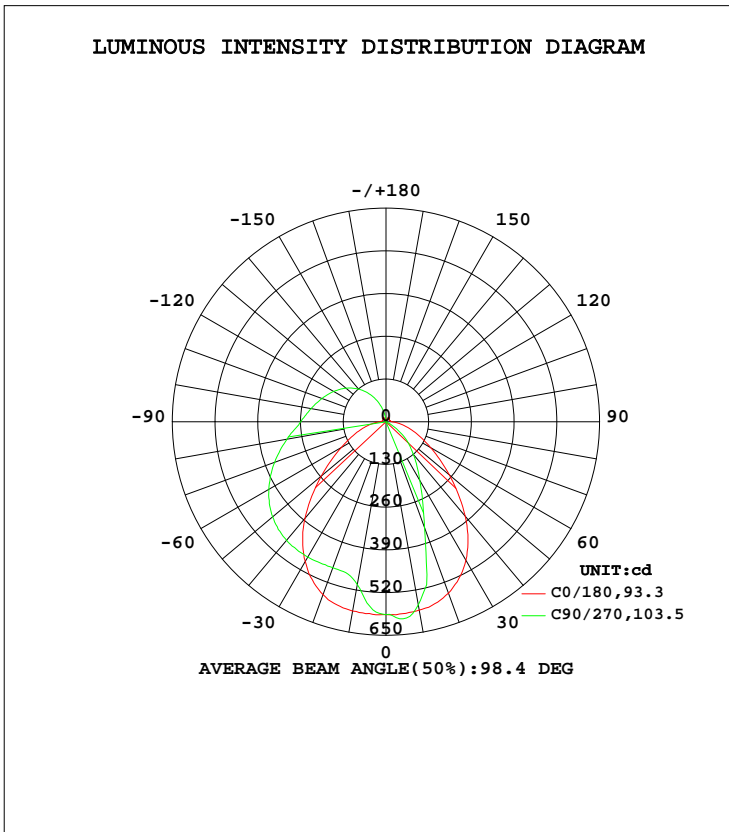


LUMINAIRE PHOTOMETRIC TEST REPORT

Test:U:120.1V I:0.2896A P:33.98W PF:0.9771 Lamp Flux:2025.87x1 lm		
NAME: LED luminaires	TYPE:N/A	WEIGHT:N/A
SPEC.:ASD-LVF24M-6D35CC-BK 4000K	DIM.: N/A	SERIAL No.:N/A
MFR.:ASD Lighting corp	SUR.:N/A	Shielding Angle:N/A

DATA OF LAMP		PHOTOMETRIC DATA Eff: 59.62 lm/W			
MODEL	PSZ2GH221125005-10	I <sub>max</sub> (cd)	602.5	S/MH(C0/180)	1.23
NOMINAL POWER(W)		LOR(%)	100.0	S/MH(C90/270)	0.72
RATED VOLTAGE(V)	120	TOTAL FLUX(lm)	2025.9	η UP, DN(C0-180)	21.0,56.2
NOMINAL FLUX(lm)	2025.87	CIE CLASS	SEMI-D.	η UP, DN(C180-360)	0.6,22.2
LAMPS INSIDE	1	η up(%)	21.6	CIBSE SHR NOM	1.00
TEST VOLTAGE(V)	120	η down(%)	78.4	CIBSE SHR MAX	1.15



C Range: 0 - 360DEG  
 C Interval: 22.5DEG  
 Test Speed: HIGH  
 Temperature:25.1DEG  
 Operators:Carl  
 Test Date:2022-11-30

Carl Deng

γ Range: 0 - 180DEG  
 γ Interval: 1.0DEG  
 Test System:EVERFINE GO-R5000\_V2 SYSTEM V2.0.351  
 Humidity:42%  
 Test Distance:2.532m [K=1.0000]  
 Remarks:

Reviewed by : Merry He

ZONAL FLUX DIAGRAM

ZONAL FLUX DIAGRAM:

γ	C0	C45	C90	C135	C180	C225	C270	C315	γ	Φ zone	Φ total	%lum, lamp
10	585.0	539.8	503.6	538.3	582.1	596.9	566.1	594.6	0- 10	55.19	55.19	2.72,2.72
20	559.9	480.9	472.9	481.3	555.4	505.0	344.4	503.8	10- 20	148.3	203.5	10,10
30	491.3	469.0	475.6	468.6	486.4	306.2	206.3	307.8	20- 30	204.6	408.1	20.1,20.1
40	383.8	456.1	470.6	456.9	375.3	191.0	129.4	192.9	30- 40	234.1	642.2	31.7,31.7
50	256.9	434.9	450.2	435.6	251.7	116.4	74.05	117.9	40- 50	237.3	879.5	43.4,43.4
60	158.0	402.1	411.6	403.6	156.8	58.18	18.37	60.39	50- 60	221.0	1101	54.3,54.3
70	93.89	359.7	360.6	360.4	93.44	3.186	0.4112	4.737	60- 70	191.7	1292	63.8,63.8
80	49.26	309.5	305.7	310.7	49.09	0.4048	0.4497	0.4503	70- 80	161.6	1454	71.8,71.8
90	18.22	262.9	259.9	263.7	18.40	0.4516	0.5194	0.5160	80- 90	134.1	1588	78.4,78.4
100	12.07	231.8	231.4	232.2	14.10	0.4988	0.5765	0.5681	90-100	114.2	1702	84,84
110	11.18	202.3	207.3	202.6	12.71	0.4159	0.4795	0.4676	100-110	97.19	1799	88.8,88.8
120	10.22	172.9	184.4	173.6	11.81	0.3511	0.3923	0.3887	110-120	79.26	1879	92.7,92.7
130	12.71	142.3	159.4	142.7	14.24	0.3515	0.3900	0.3925	120-130	60.89	1939	95.7,95.7
140	13.81	110.0	129.8	110.3	15.64	0.3530	0.3818	0.4078	130-140	42.83	1982	97.9,97.9
150	15.85	75.86	95.58	76.20	15.12	0.4169	0.4213	0.4879	140-150	26.40	2009	99.2,99.2
160	9.816	41.97	57.94	41.44	9.909	1.869	0.5380	0.6238	150-160	12.97	2022	99.8,99.8
170	2.324	12.21	20.53	8.406	2.084	0.8311	0.6864	1.126	160-170	3.844	2026	100,100
180	2.238	2.107	1.155	2.169	2.276	2.290	2.277	2.208	170-180	0.3326	2026	100,100
DEG	LUMINOUS INTENSITY:cd									UNIT:lm		

Conical surface Flux(90deg): 761.73 lm

%lum = 37.6%  
%lamp = 37.6%

Conical surface Flux(120deg): 1100.5 lm

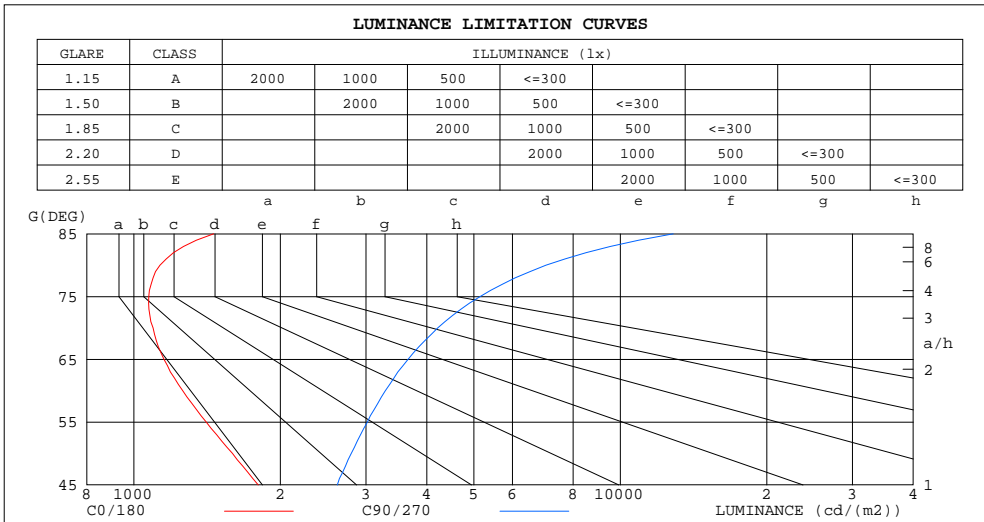
%lum = 54.3%  
%lamp = 54.3%

C Range: 0 - 360DEG  
C Interval: 22.5DEG  
Test Speed: HIGH  
Temperature:25.1DEG  
Operators:Carl  
Test Date:2022-11-30

γ Range: 0 - 180DEG  
γ Interval: 1.0DEG  
Test System:EVERFINE GO-R5000\_V2 SYSTEM V2.0.351  
Humidity:42%  
Test Distance:2.532m [K=1.0000]  
Remarks:

LUMINANCE LIMITATION CURVES

Test:U:120.1V I:0.2896A P:33.98W PF:0.9771 Lamp Flux:2025.87x1 lm		
NAME: LED luminaires	TYPE:N/A	WEIGHT:N/A
SPEC.:ASD-LVF24M-6D35CC-BK 4000K	DIM.: N/A	SERIAL No.:N/A
MFR.: ASD Lighting corp	SUR.:N/A	Shielding Angle:N/A



LUMINANCE cd/(m2)		
G (DEG)	C0/180	C90/270
85	1458	12846
80	1132	7031
75	1073	5148
70	1095	4212
65	1153	3662
60	1260	3289
55	1409	3021
50	1594	2798
45	1802	2621

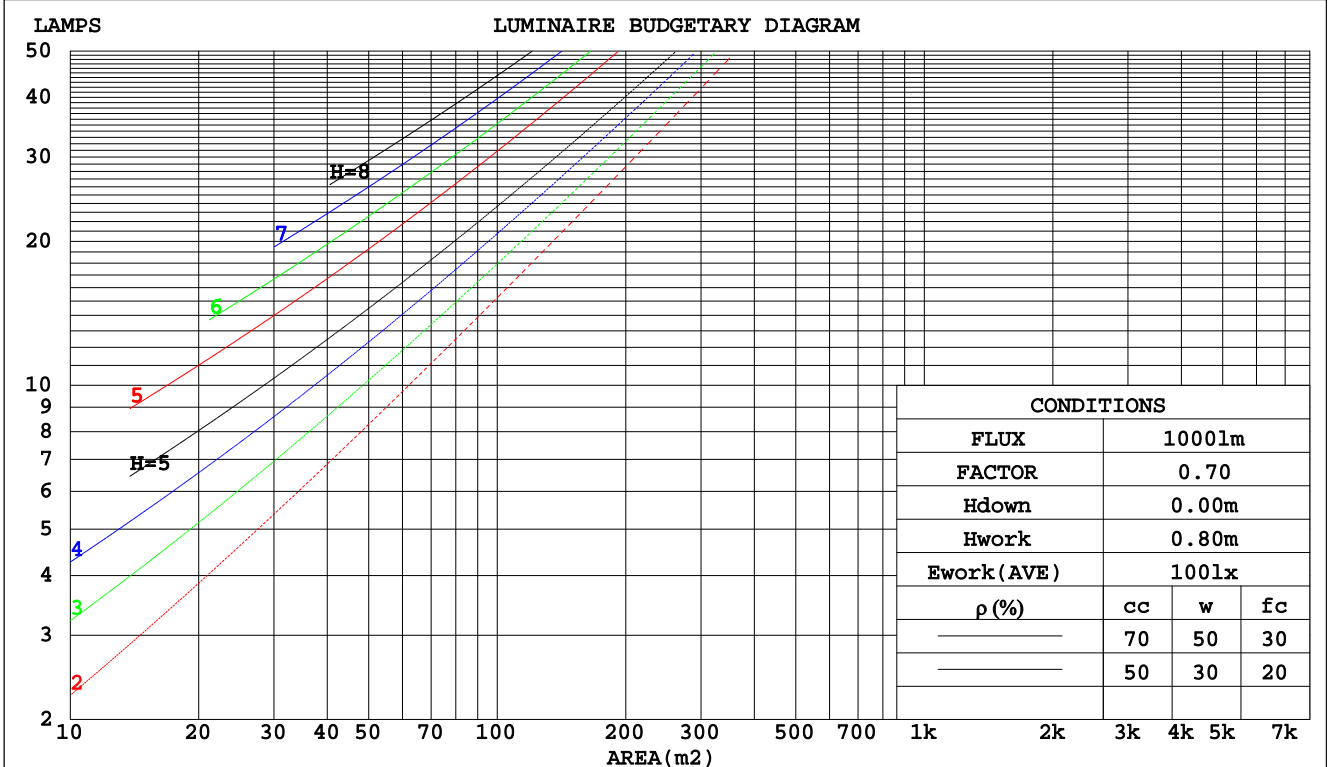
C Range: 0 - 360DEG  
 C Interval: 22.5DEG  
 Test Speed: HIGH  
 Temperature:25.1DEG  
 Operators:Carl  
 Test Date:2022-11-30

γ Range: 0 - 180DEG  
 γ Interval: 1.0DEG  
 Test System:EVERFINE GO-R5000\_V2 SYSTEM V2.0.351  
 Humidity:42%  
 Test Distance:2.532m [K=1.0000]  
 Remarks:

CU AND LUMINAIRE BUDGETARY ESTIMATE DIAGRAM

Test:U:120.1V I:0.2896A P:33.98W PF:0.9771 Lamp Flux:2025.87x1 lm		
NAME: LED luminaires	TYPE:N/A	WEIGHT:N/A
SPEC.:ASD-LVF24M-6D35CC-BK 4000K	DIM.: N/A	SERIAL No.:N/A
MFR.: ASD Lighting corp	SUR.:N/A	Shielding Angle:N/A

pcc	80%			70%			50%			30%			10%			0
	50%	30%	10%	50%	30%	10%	50%	30%	10%	50%	30%	10%	50%	30%	10%	0
pw																0
pfc	20%			20%			20%			20%			20%			0
RCR	RCR:Room Cavity Ratio      Coefficients of Utilization(CU)															
0.0	1.14	1.14	1.14	1.09	1.09	1.09	.99	.99	.99	.90	.90	.90	.82	.82	.82	.78
1.0	.96	.91	.86	.92	.87	.83	.83	.80	.76	.76	.73	.70	.69	.66	.64	.61
2.0	.83	.75	.69	.79	.72	.67	.72	.67	.62	.65	.61	.57	.59	.56	.53	.49
3.0	.72	.64	.57	.69	.61	.55	.63	.57	.51	.57	.52	.48	.52	.48	.44	.41
4.0	.64	.55	.48	.61	.53	.47	.56	.49	.44	.51	.45	.41	.47	.42	.38	.35
5.0	.57	.48	.41	.55	.46	.40	.50	.43	.38	.46	.40	.35	.42	.37	.33	.30
6.0	.51	.42	.36	.49	.41	.35	.45	.38	.33	.42	.36	.31	.38	.33	.29	.27
7.0	.47	.38	.32	.45	.37	.31	.41	.34	.29	.38	.32	.28	.35	.30	.26	.24
8.0	.43	.34	.28	.41	.33	.28	.38	.31	.26	.35	.29	.25	.32	.27	.23	.21
9.0	.39	.31	.25	.38	.30	.25	.35	.28	.24	.32	.27	.22	.30	.25	.21	.19
10.0	.36	.28	.23	.35	.27	.23	.32	.26	.21	.30	.24	.20	.28	.23	.19	.17



C Range: 0 - 360DEG  
 C Interval: 22.5DEG  
 Test Speed: HIGH  
 Temperature:25.1DEG  
 Operators:Carl  
 Test Date:2022-11-30

γ Range: 0 - 180DEG  
 γ Interval: 1.0DEG  
 Test System:EVERFINE GO-R5000\_V2 SYSTEM V2.0.351  
 Humidity:42%  
 Test Distance:2.532m [K=1.0000]  
 Remarks:

WEC AND CCEC

Test:U:120.1V I:0.2896A P:33.98W PF:0.9771 Lamp Flux:2025.87x1 lm		
NAME: LED luminaires	TYPE:N/A	WEIGHT:N/A
SPEC.:ASD-LVF24M-6D35CC-BK 4000K	DIM.: N/A	SERIAL No.:N/A
MFR.:ASD Lighting corp	SUR.:N/A	Shielding Angle:N/A

ρcc	80%			70%			50%			30%			10%			0
ρw	50%	30%	10%	50%	30%	10%	50%	30%	10%	50%	30%	10%	50%	30%	10%	0
ρfc	20%			20%			20%			20%			20%			0
RCR	RCR:Room Cavity Ratio						Wall Exitance Coefficients(WEC)									
0.0																
1.0	.362	.206	.065	.348	.198	.063	.322	.185	.059	.298	.172	.055	.277	.160	.052	
2.0	.314	.172	.053	.302	.166	.051	.279	.155	.048	.257	.144	.045	.237	.134	.042	
3.0	.281	.149	.045	.269	.144	.043	.248	.135	.041	.229	.125	.038	.211	.117	.036	
4.0	.254	.132	.039	.243	.127	.038	.224	.119	.036	.207	.111	.033	.190	.103	.031	
5.0	.231	.118	.034	.222	.114	.033	.205	.107	.031	.189	.099	.030	.173	.093	.028	
6.0	.213	.107	.031	.204	.103	.030	.188	.097	.028	.174	.090	.027	.160	.084	.025	
7.0	.197	.097	.028	.189	.094	.027	.174	.088	.025	.161	.082	.024	.148	.077	.023	
8.0	.183	.089	.025	.176	.087	.024	.162	.081	.023	.150	.076	.022	.138	.071	.021	
9.0	.171	.083	.023	.164	.080	.022	.152	.075	.021	.140	.070	.020	.129	.066	.019	
10.0	.160	.077	.021	.154	.074	.021	.143	.070	.020	.132	.065	.019	.122	.061	.018	

ρcc	80%			70%			50%			30%			10%			0
ρw	50%	30%	10%	50%	30%	10%	50%	30%	10%	50%	30%	10%	50%	30%	10%	0
ρfc	20%			20%			20%			20%			20%			0
RCR	RCR:Room Cavity Ratio						Ceiling Cavity Exitance Coefficients(CCEC)									
0.0	.355	.355	.355	.304	.304	.304	.207	.207	.207	.119	.119	.119	.038	.038	.038	
1.0	.350	.322	.296	.299	.276	.255	.205	.190	.176	.118	.110	.103	.038	.035	.033	
2.0	.342	.299	.262	.293	.257	.227	.201	.178	.158	.116	.104	.093	.037	.034	.030	
3.0	.335	.282	.241	.287	.244	.209	.197	.169	.146	.114	.099	.086	.037	.032	.028	
4.0	.327	.270	.226	.280	.233	.197	.193	.163	.139	.112	.095	.082	.036	.031	.027	
5.0	.319	.260	.216	.274	.225	.188	.189	.157	.133	.109	.092	.079	.035	.030	.026	
6.0	.312	.252	.209	.268	.218	.182	.185	.153	.129	.107	.090	.077	.035	.029	.025	
7.0	.305	.245	.204	.262	.213	.178	.181	.149	.126	.105	.088	.075	.034	.029	.025	
8.0	.298	.240	.200	.257	.208	.174	.178	.146	.124	.103	.086	.074	.033	.028	.024	
9.0	.292	.235	.197	.252	.204	.171	.175	.143	.122	.102	.085	.073	.033	.028	.024	
10.0	.287	.231	.194	.247	.201	.169	.171	.141	.120	.100	.083	.072	.032	.027	.024	

C Range: 0 - 360DEG  
 C Interval: 22.5DEG  
 Test Speed: HIGH  
 Temperature:25.1DEG  
 Operators:Carl  
 Test Date:2022-11-30

γ Range: 0 - 180DEG  
 γ Interval: 1.0DEG  
 Test System:EVERFINE GO-R5000\_V2 SYSTEM V2.0.351  
 Humidity:42%  
 Test Distance:2.532m [K=1.0000]  
 Remarks:

UGR(Unified Glare Rating) Table

Test:U:120.1V I:0.2896A P:33.98W PF:0.9771 Lamp Flux:2025.87x1 lm										
NAME: LED luminaires					TYPE:N/A			WEIGHT:N/A		
SPEC.:ASD-LVF24M-6D35CC-BK 4000K					DIM.: N/A			SERIAL No.:N/A		
MFR.:ASD Lighting corp					SUR.:N/A			Shielding Angle:N/A		
ceiling/cavity	0.7	0.7	0.5	0.5	0.3	0.7	0.7	0.5	0.5	0.3
walls	0.5	0.3	0.5	0.3	0.3	0.5	0.3	0.5	0.3	0.3
working plane	0.2	0.2	0.2	0.2	0.2	0.2	0.2	0.2	0.2	0.2
Room dimensions	Viewed crosswise					Viewed endwise				
x = 2H y = 2H	15.0	16.3	15.5	16.8	17.4	17.2	18.4	17.7	19.0	19.6
3H	16.6	17.8	17.2	18.4	19.0	19.9	21.0	20.4	21.6	22.3
4H	17.3	18.4	17.9	19.0	19.7	21.3	22.4	21.9	23.0	23.7
6H	17.9	18.9	18.5	19.5	20.3	22.9	23.9	23.5	24.5	25.3
8H	18.1	19.1	18.7	19.8	20.5	23.8	24.8	24.4	25.4	26.1
12H	18.3	19.3	19.0	19.9	20.7	24.8	25.7	25.4	26.4	27.1
4H 2H	16.6	17.7	17.2	18.3	18.9	18.0	19.1	18.6	19.7	20.4
3H	18.7	19.7	19.3	20.3	21.1	20.9	21.9	21.5	22.5	23.2
4H	19.8	20.7	20.5	21.3	22.1	22.5	23.4	23.2	24.1	24.8
6H	20.7	21.5	21.4	22.2	23.0	24.3	25.1	25.0	25.8	26.6
8H	21.1	21.9	21.8	22.6	23.4	25.3	26.0	26.0	26.7	27.5
12H	21.4	22.1	22.1	22.8	23.7	26.4	27.1	27.1	27.8	28.6
8H 4H	21.1	21.8	21.8	22.5	23.3	23.1	23.8	23.8	24.5	25.4
6H	22.6	23.2	23.3	24.0	24.8	25.2	25.8	25.9	26.5	27.4
8H	23.3	23.9	24.1	24.7	25.5	26.4	26.9	27.1	27.7	28.6
12H	24.0	24.5	24.8	25.3	26.2	27.7	28.2	28.5	29.0	29.9
12H 4H	21.4	22.1	22.1	22.8	23.7	23.2	23.9	23.9	24.6	25.4
6H	23.2	23.7	23.9	24.5	25.4	25.4	26.0	26.2	26.7	27.6
8H	24.2	24.6	24.9	25.4	26.3	26.7	27.2	27.5	28.0	28.9
Variations with the observer position at spacings:										
S = 1.0H	+ 0.1 / - 0.1					+ 0.1 / - 0.1				
1.5H	+ 0.2 / - 0.3					+ 0.2 / - 0.3				
2.0H	+ 0.3 / - 0.5					+ 0.3 / - 0.4				

CIE Pub.117 Corrected 2026 lm Total Lamp Luminous Flux.(8log(F/F0) = 2.5)

C Range: 0 - 360DEG  
 C Interval: 22.5DEG  
 Test Speed: HIGH  
 Temperature:25.1DEG  
 Operators:Carl  
 Test Date:2022-11-30

γ Range: 0 - 180DEG  
 γ Interval: 1.0DEG  
 Test System:EVERFINE GO-R5000\_V2 SYSTEM V2.0.351  
 Humidity:42%  
 Test Distance:2.532m [K=1.0000]  
 Remarks:

UTILIZATION FACTORS TABLE

Test:U:120.1V I:0.2896A P:33.98W PF:0.9771 Lamp Flux:2025.87x1 lm		
NAME: LED luminaires	TYPE:N/A	WEIGHT:N/A
SPEC.:ASD-LVF24M-6D35CC-BK 4000K	DIM.: N/A	SERIAL No.:N/A
MFR.:ASD Lighting corp	SUR.:N/A	Shielding Angle:N/A

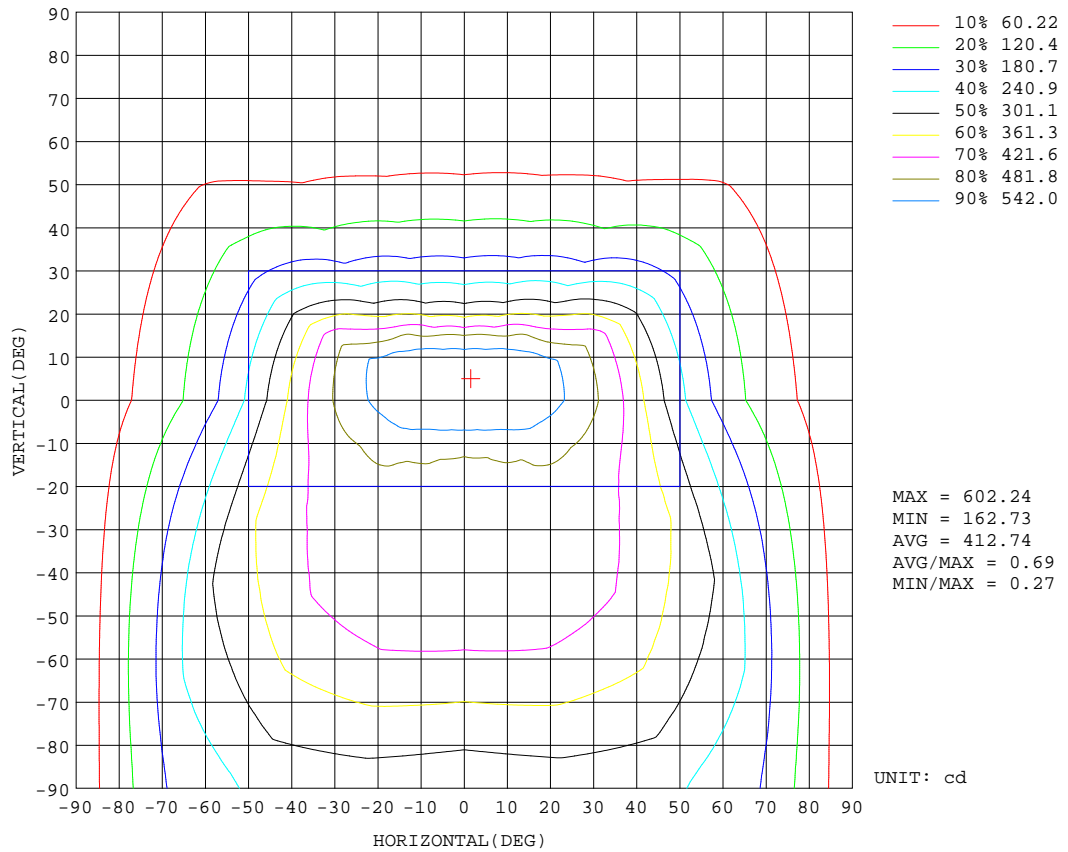
REFLECTANCE										
Ceiling	0.8	0.8	0.8	0.7	0.7	0.7	0.5	0.5	0.5	0
Walls	0.7	0.5	0.3	0.7	0.5	0.3	0.7	0.5	0.3	0
Working plane	0.2	0.2	0.2	0.2	0.2	0.2	0.2	0.2	0.2	0
ROOM INDEX	UTILIZATION FACTORS(PERCENT) $k(RI) \times RCR = 5$									
k = 0.60	49	38	31	48	37	30	46	36	30	23
0.80	58	46	38	57	45	38	54	44	37	29
1.00	66	54	46	64	52	45	60	52	44	35
1.25	73	61	52	70	59	52	66	56	50	40
1.50	78	66	58	75	64	57	70	61	54	44
2.00	85	74	66	81	72	64	75	67	61	49
2.50	89	79	72	85	76	70	79	71	66	53
3.00	92	84	76	89	81	74	81	75	70	56
4.00	97	89	83	93	86	80	85	80	75	60
5.00	100	93	88	95	90	84	87	83	79	63
ROOM INDEX	UF(total)									Direct
According to DIN EN 13032-2 2004			Suspended				SHRNOM = 1.25			

C Range: 0 - 360DEG  
 C Interval: 22.5DEG  
 Test Speed: HIGH  
 Temperature:25.1DEG  
 Operators:Carl  
 Test Date:2022-11-30

$\gamma$  Range: 0 - 180DEG  
 $\gamma$  Interval: 1.0DEG  
 Test System:EVERFINE GO-R5000\_V2 SYSTEM V2.0.351  
 Humidity:42%  
 Test Distance:2.532m [K=1.0000]  
 Remarks:

ISOCANDELA DIAGRAM

Test:U:120.1V I:0.2896A P:33.98W PF:0.9771 Lamp Flux:2025.87x1 lm		
NAME: LED luminaires	TYPE:N/A	WEIGHT:N/A
SPEC.:ASD-LVF24M-6D35CC-BK 4000K	DIM.: N/A	SERIAL No.:N/A
MFR.: ASD Lighting corp	SUR.:N/A	Shielding Angle:N/A



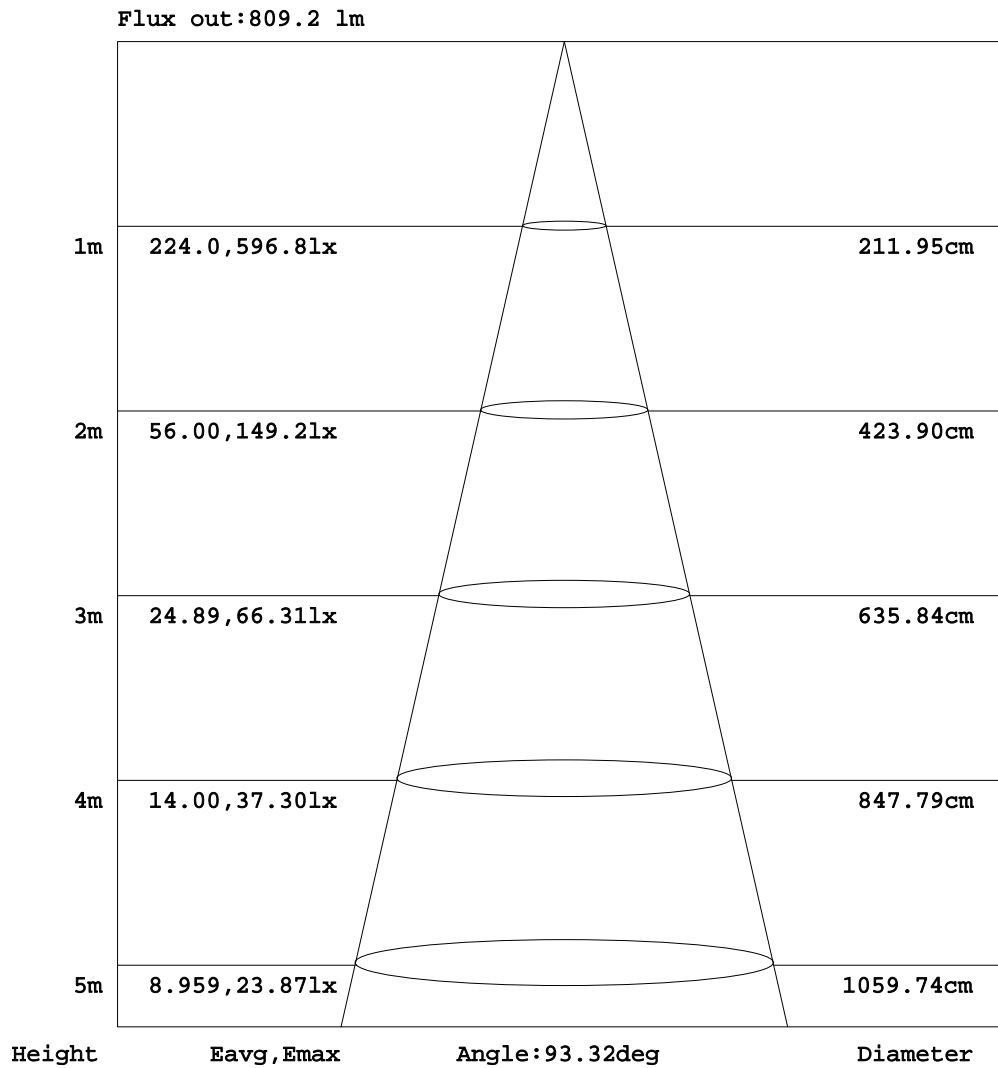
C Range: 0 - 360DEG  
 C Interval: 22.5DEG  
 Test Speed: HIGH  
 Temperature:25.1DEG  
 Operators:Carl  
 Test Date:2022-11-30

γ Range: 0 - 180DEG  
 γ Interval: 1.0DEG  
 Test System:EVERFINE GO-R5000\_V2 SYSTEM V2.0.351  
 Humidity:42%  
 Test Distance:2.532m [K=1.0000]  
 Remarks:



AAI Figure

Test:U:120.1V I:0.2896A P:33.98W PF:0.9771 Lamp Flux:2025.87x1 lm		
NAME: LED luminaires	TYPE:N/A	WEIGHT:N/A
SPEC.:ASD-LVF24M-6D35CC-BK 4000K	DIM.: N/A	SERIAL No.:N/A
MFR.:ASD Lighting corp	SUR.:N/A	Shielding Angle:N/A



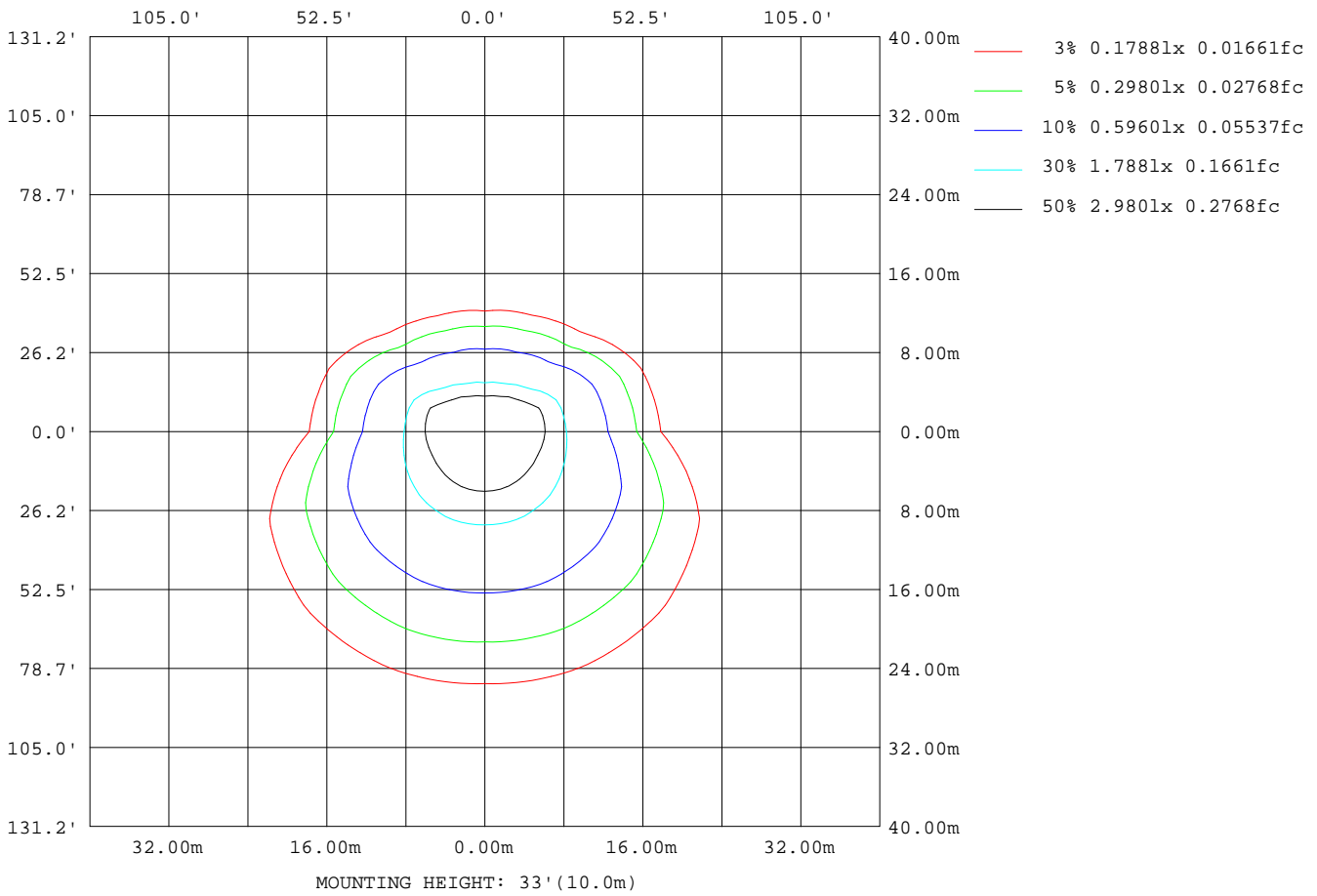
Note:The Curves indicate the illuminated area and the average illumination when the luminaire is at different distance.

C Range: 0 - 360DEG  
 C Interval: 22.5DEG  
 Test Speed: HIGH  
 Temperature:25.1DEG  
 Operators:Carl  
 Test Date:2022-11-30

γ Range: 0 - 180DEG  
 γ Interval: 1.0DEG  
 Test System:EVERFINE GO-R5000\_V2 SYSTEM V2.0.351  
 Humidity:42%  
 Test Distance:2.532m [K=1.0000]  
 Remarks:

**ISOLUX DIAGRAM**

Test:U:120.1V I:0.2896A P:33.98W PF:0.9771 Lamp Flux:2025.87x1 lm		
NAME: LED luminaires	TYPE:N/A	WEIGHT:N/A
SPEC.:ASD-LVF24M-6D35CC-BK 4000K	DIM.: N/A	SERIAL No.:N/A
MFR.:ASD Lighting corp	SUR.:N/A	Shielding Angle:N/A



C Range: 0 - 360DEG  
 C Interval: 22.5DEG  
 Test Speed: HIGH  
 Temperature:25.1DEG  
 Operators:Carl  
 Test Date:2022-11-30

γ Range: 0 - 180DEG  
 γ Interval: 1.0DEG  
 Test System:EVERFINE GO-R5000\_V2 SYSTEM V2.0.351  
 Humidity:42%  
 Test Distance:2.532m [K=1.0000]  
 Remarks:

**LED Avg.L Report**

Test:U:120.1V I:0.2896A P:33.98W PF:0.9771 Lamp Flux:2025.87x1 lm		
NAME: LED luminaires	TYPE:N/A	WEIGHT:N/A
SPEC.:ASD-LVF24M-6D35CC-BK 4000K	DIM.: N/A	SERIAL No.:N/A
MFR.:ASD Lighting corp	SUR.:N/A	Shielding Angle:N/A

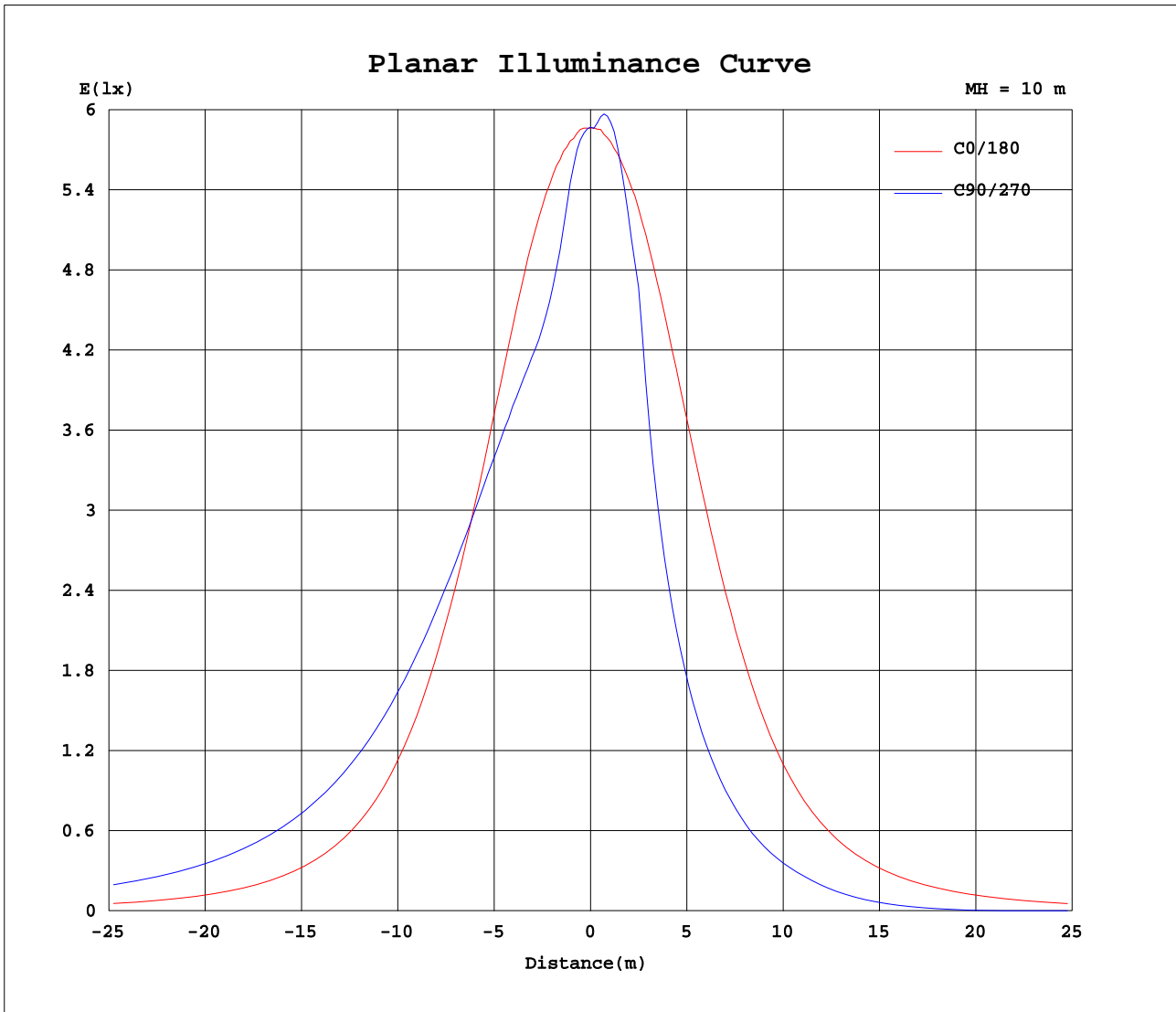
AvgL	cd/m2
L_0~180(65)av	1153
L_0~180(75)av	1072
L_0~180(85)av	1441
L_90~270(65)av	1837
L_90~270(75)av	2577
L_90~270(85)av	6433
L_45(65)av	1945
L_45(75)av	2593
L_45(85)av	6525

Standard: GB/T 29293-2012

C Range: 0 - 360DEG  
 C Interval: 22.5DEG  
 Test Speed: HIGH  
 Temperature:25.1DEG  
 Operators:Carl  
 Test Date:2022-11-30

γ Range: 0 - 180DEG  
 γ Interval: 1.0DEG  
 Test System:EVERFINE GO-R5000\_V2 SYSTEM V2.0.351  
 Humidity:42%  
 Test Distance:2.532m [K=1.0000]  
 Remarks:

Planar Illuminance Curve



C Range: 0 - 360DEG  
 C Interval: 22.5DEG  
 Test Speed: HIGH  
 Temperature: 25.1DEG  
 Operators: Carl  
 Test Date: 2022-11-30

$\gamma$  Range: 0 - 180DEG  
 $\gamma$  Interval: 1.0DEG  
 Test System: EVERFINE GO-R5000\_V2 SYSTEM V2.0.351  
 Humidity: 42%  
 Test Distance: 2.532m [K=1.0000]  
 Remarks:

LUMINOUS DISTRIBUTION INTENSITY DATA

Test:U:120.1V I:0.2896A P:33.98W PF:0.9771 Lamp Flux:2025.87x1 lm		
NAME: LED luminaires	TYPE:N/A	WEIGHT:N/A
SPEC.:ASD-LVF24M-6D35CC-BK 4000K	DIM.: N/A	SERIAL No.:N/A
MFR.: ASD Lighting corp	SUR.:N/A	Shielding Angle:N/A

Table--1

UNIT: cd

C( DEG) γ (DEG)	0	22.5	45	67.5	90	112.5	135	157.5	180	202.5	225	247.5	270	292.5	315	337.5			
0	587	587	587	587	587	587	587	587	587	587	587	587	587	587	587	587			
5	586	583	577	568	564	567	576	582	586	588	599	602	602	601	599	589			
10	585	572	540	512	504	511	538	570	582	596	597	576	566	573	595	596			
15	577	551	501	481	475	480	498	548	573	591	557	514	482	513	555	590			
20	560	522	481	474	473	474	481	518	555	570	505	379	344	378	504	566			
25	531	492	473	475	474	475	474	489	526	533	388	289	263	289	389	529			
30	491	465	469	475	476	477	469	462	486	489	306	227	206	227	308	485			
35	442	441	464	476	474	476	463	440	435	432	242	180	164	181	243	436			
40	384	419	456	473	471	472	457	420	375	351	191	144	129	144	193	356			
45	319	397	446	465	464	466	448	399	311	283	151	112	101	113	152	287			
50	257	376	435	455	450	455	436	378	252	223	116	85.5	74.1	86.1	118	226			
55	203	354	420	439	434	440	422	356	200	174	87.7	54.8	43.9	55.9	89.3	175			
60	158	332	402	420	412	420	404	334	157	133	58.2	26.1	18.4	27.1	60.4	134			
65	122	309	383	397	387	397	383	311	122	101	27.4	3.74	1.32	4.48	29.6	101			
70	93.9	285	360	373	361	373	360	288	93.4	72.6	3.19	0.39	0.41	0.43	4.74	72.9			
75	69.6	260	335	346	334	345	336	262	69.4	40.1	0.39	0.41	0.43	0.44	0.43	41.2			
80	49.3	235	309	320	306	319	311	237	49.1	21.3	0.40	0.44	0.45	0.46	0.45	20.2			
85	31.9	210	284	294	280	293	284	212	31.1	19.5	0.44	0.48	0.49	0.50	0.49	18.5			
90	18.2	189	263	272	260	271	264	191	18.4	17.9	0.45	0.51	0.52	0.53	0.52	16.9			
95	15.4	176	247	257	245	256	248	178	15.8	16.7	0.48	0.55	0.56	0.57	0.56	15.8			
100	12.1	163	232	243	231	242	232	165	14.1	15.4	0.50	0.56	0.58	0.58	0.57	14.6			
105	11.5	151	217	229	220	228	217	153	13.3	14.1	0.46	0.50	0.53	0.52	0.51	13.4			
110	11.2	139	202	215	207	214	203	141	12.7	12.5	0.42	0.46	0.48	0.48	0.47	12.0			
115	10.6	127	188	203	196	201	188	129	11.9	10.3	0.38	0.42	0.44	0.43	0.43	10.1			
120	10.2	115	173	189	184	188	174	117	11.8	8.10	0.35	0.38	0.39	0.40	0.39	8.05			
125	11.4	103	158	174	172	174	158	105	13.1	6.10	0.35	0.38	0.39	0.40	0.39	6.17			
130	12.7	91.8	142	160	159	159	143	92.7	14.2	4.31	0.35	0.38	0.39	0.40	0.39	4.42			
135	13.7	79.9	126	144	145	144	127	80.3	14.8	2.67	0.35	0.37	0.39	0.39	0.40	2.89			
140	13.8	67.6	110	128	130	127	110	68.5	15.6	1.79	0.35	0.37	0.38	0.40	0.41	1.80			
145	15.2	55.3	93.0	110	113	110	93.5	56.0	15.8	2.27	0.37	0.38	0.39	0.41	0.44	1.34			
150	15.9	43.9	75.9	91.8	95.6	91.9	76.2	44.1	15.1	4.27	0.42	0.41	0.42	0.45	0.49	1.07			
155	12.6	32.6	58.5	73.1	77.3	73.2	53.9	34.1	13.1	6.45	0.84	0.47	0.49	0.51	0.56	1.30			
160	9.82	22.1	42.0	53.9	57.9	54.1	41.4	22.5	9.91	4.84	1.87	0.57	0.54	0.56	0.62	1.40			
165	4.76	12.5	26.3	35.6	38.8	35.8	24.3	10.4	4.67	3.42	1.99	0.72	0.63	0.62	0.78	1.54			
170	2.32	3.33	12.2	18.2	20.5	17.7	8.41	2.94	2.08	2.06	0.83	0.63	0.69	0.82	1.13	1.47			
175	2.26	2.42	2.67	4.46	5.73	2.46	2.60	2.22	1.97	1.97	1.79	1.60	0.97	1.53	1.78	1.73			
180	2.24	2.54	2.11	2.30	1.15	2.73	2.17	2.58	2.28	2.27	2.29	2.31	2.28	1.64	2.21	2.32			

C Range: 0 - 360DEG  
 C Interval: 22.5DEG  
 Test Speed: HIGH  
 Temperature:25.1DEG  
 Operators:Carl  
 Test Date:2022-11-30

γ Range: 0 - 180DEG  
 γ Interval: 1.0DEG  
 Test System:EVERFINE GO-R5000\_V2 SYSTEM V2.0.351  
 Humidity:42%  
 Test Distance:2.532m [K=1.0000]  
 Remarks: