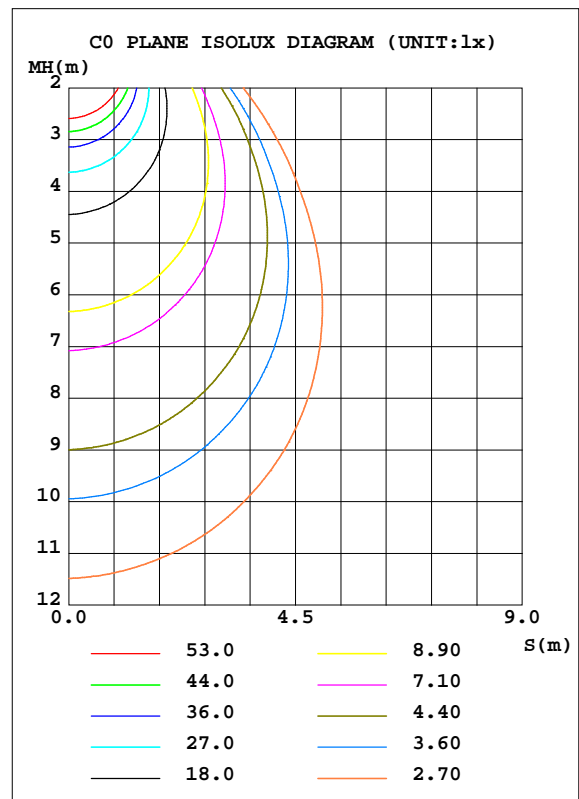
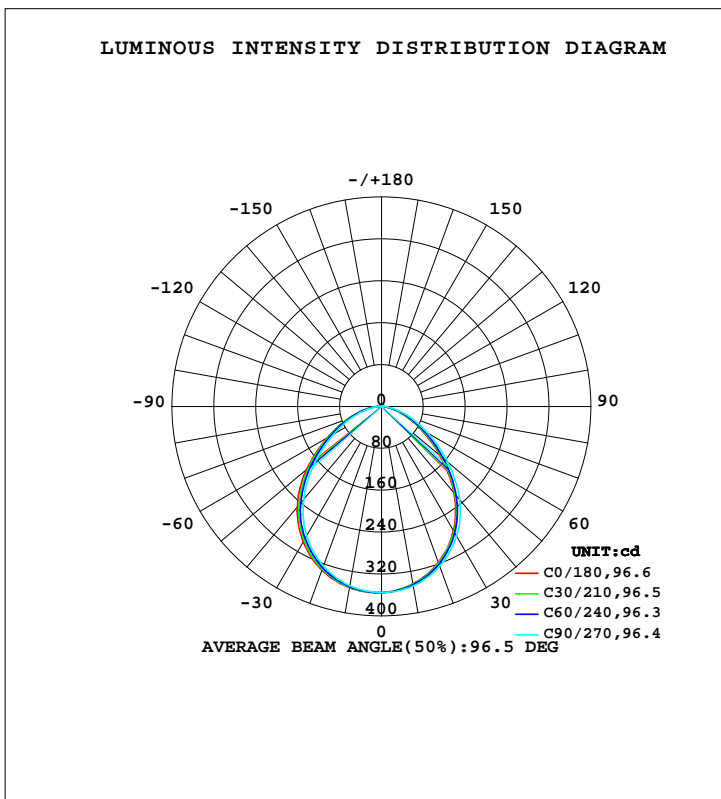


LUMINAIRE PHOTOMETRIC TEST REPORT

NAME:	TYPE:	WEIGHT:
SPEC.:	DIM.:	SERIAL No.:
MFR.: ASD LIGHTING CORP	SUR.: 0.175*0.175	Shielding Angle:

DATA OF LAMP		PHOTOMETRIC DATA			
ASD LAMP-GBR-4D10CC-WH(5000K)		Imax(cd)	355.7	S/MH(C0/180)	1.25
NOMINAL POWER(W)	10	LOR(%)	100.0	S/MH(C90/270)	1.20
RATED VOLTAGE(V)	120	TOTAL FLUX(lm)	841.65	h UP, DN(C0-180)	0.5, 48.5
NOMINAL FLUX(lm)	841.65	CIE CLASS	DIRECT	h UP, DN(C180-360)	0.4, 50.6
LAMPS INSIDE	1	h up(%)	0.9	CIBSE SHR NOM	1.25
TEST VOLTAGE(V)	120.0	h down(%)	99.1	CIBSE SHR MAX	1.35



C Range: 0 - 360DEG  
 C Interval: 30.0DEG  
 Test Speed: HIGH  
 Temperature: 25.3DEG  
 Operators:  
 Test Date: 2021-12-23

g Range: 0 - 180DEG  
 g Interval: 1.0DEG  
 Test System: EVERFINE GO-2000B\_V1 SYSTEM V2.00.426  
 Humidity: 65.0%  
 Test Distance: 8.000m [K=1.0000]  
 Remarks:

ZONAL FLUX DIAGRAM

ZONAL FLUX DIAGRAM:

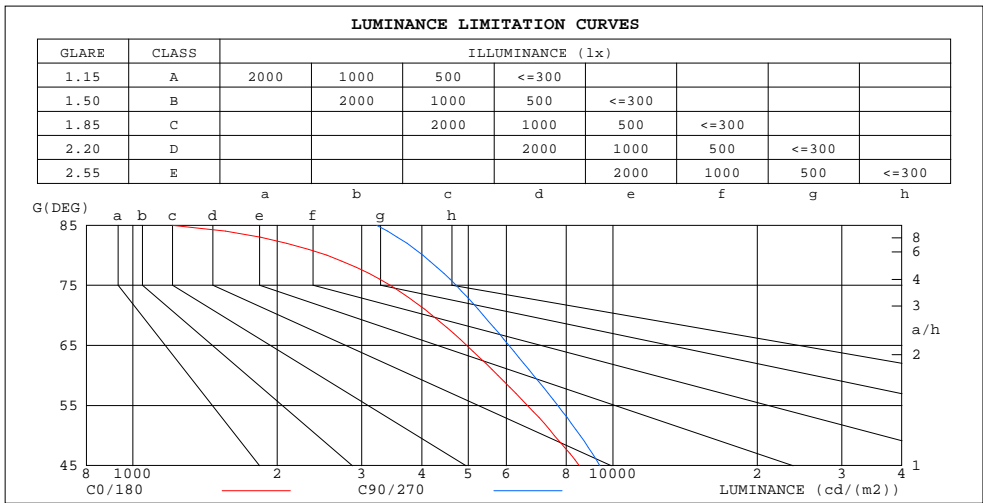
g	C0	C45	C90	C135	C180	C225	C270	C315	g	F zone	F total	%lum,lamp
10	344.0	345.0	348.0	349.7	351.4	350.0	347.7	345.5	0- 10	33.55	33.55	3.99,3.99
20	316.9	319.3	324.7	329.2	332.8	329.5	324.3	320.6	10- 20	95.30	128.9	15.3,15.3
30	274.6	278.0	286.2	293.1	298.6	293.6	285.8	280.4	20- 30	141.4	270.2	32.1,32.1
40	215.2	220.2	232.1	242.0	250.5	242.9	231.5	224.2	30- 40	163.1	433.3	51.5,51.5
50	145.4	151.7	165.0	176.9	186.7	178.8	166.0	155.9	40- 50	153.9	587.2	69.8,69.8
60	86.28	91.76	102.7	112.1	119.8	115.3	105.3	94.84	50- 60	119.3	706.5	83.9,83.9
70	43.04	47.03	55.16	61.89	67.54	64.91	57.44	49.22	60- 70	77.51	784.0	93.2,93.2
80	13.19	15.53	20.97	25.86	29.87	27.86	22.31	16.87	70- 80	39.71	823.7	97.9,97.9
90	0.2471	0.2250	0.1894	0.3680	2.349	2.704	0.1945	0.1805	80- 90	10.62	834.3	99.1,99.1
100	0.5077	0.4814	0.4283	0.3767	0.2925	0.3127	0.3693	0.4129	90-100	0.3412	834.7	99.2,99.2
110	0.8359	0.8120	0.7439	0.6835	0.5758	0.6051	0.6756	0.7242	100-110	0.5764	835.2	99.2,99.2
120	1.209	1.181	1.118	1.042	0.9265	0.9515	1.041	1.087	110-120	0.8759	836.1	99.3,99.3
130	1.569	1.536	1.488	1.414	1.295	1.314	1.415	1.453	120-130	1.121	837.2	99.5,99.5
140	1.888	1.867	1.825	1.755	1.628	1.640	1.735	1.769	130-140	1.235	838.5	99.6,99.6
150	2.189	2.164	2.118	2.069	1.961	1.955	2.019	2.062	140-150	1.200	839.7	99.8,99.8
160	2.455	2.418	2.389	2.344	2.257	2.256	2.307	2.339	150-160	1.017	840.7	99.9,99.9
170	2.648	2.639	2.627	2.610	2.554	2.549	2.573	2.597	160-170	0.6982	841.4	100,100
180	2.752	2.744	2.740	2.752	2.752	2.747	2.735	2.752	170-180	0.2541	841.7	100,100
DEG	LUMINOUS INTENSITY:cd									UNIT:lm		

C Range: 0 - 360DEG  
 C Interval: 30.0DEG  
 Test Speed: HIGH  
 Temperature:25.3DEG  
 Operators:  
 Test Date:2021-12-23

g Range: 0 - 180DEG  
 g Interval: 1.0DEG  
 Test System:EVERFINE GO-2000B\_V1 SYSTEM V2.00.426  
 Humidity:65.0%  
 Test Distance:8.000m [K=1.0000]  
 Remarks:

**LUMINANCE LIMITATION CURVES**

<b>NAME:</b>	<b>TYPE:</b>	<b>WEIGHT:</b>
<b>SPEC.:</b>	<b>DIM.:</b>	<b>SERIAL No.:</b>
<b>MFR.: ASD LIGHTING CORP</b>	<b>SUR.: 0.175*0.175</b>	<b>Shielding Angle:</b>



LUMINANCE cd/(m2)		
G(DEG)	C0/180	C90/270
85	1210	3224
80	2537	4023
75	3435	4712
70	4202	5373
65	4962	6074
60	5762	6842
55	6641	7680
50	7554	8551
45	8523	9398

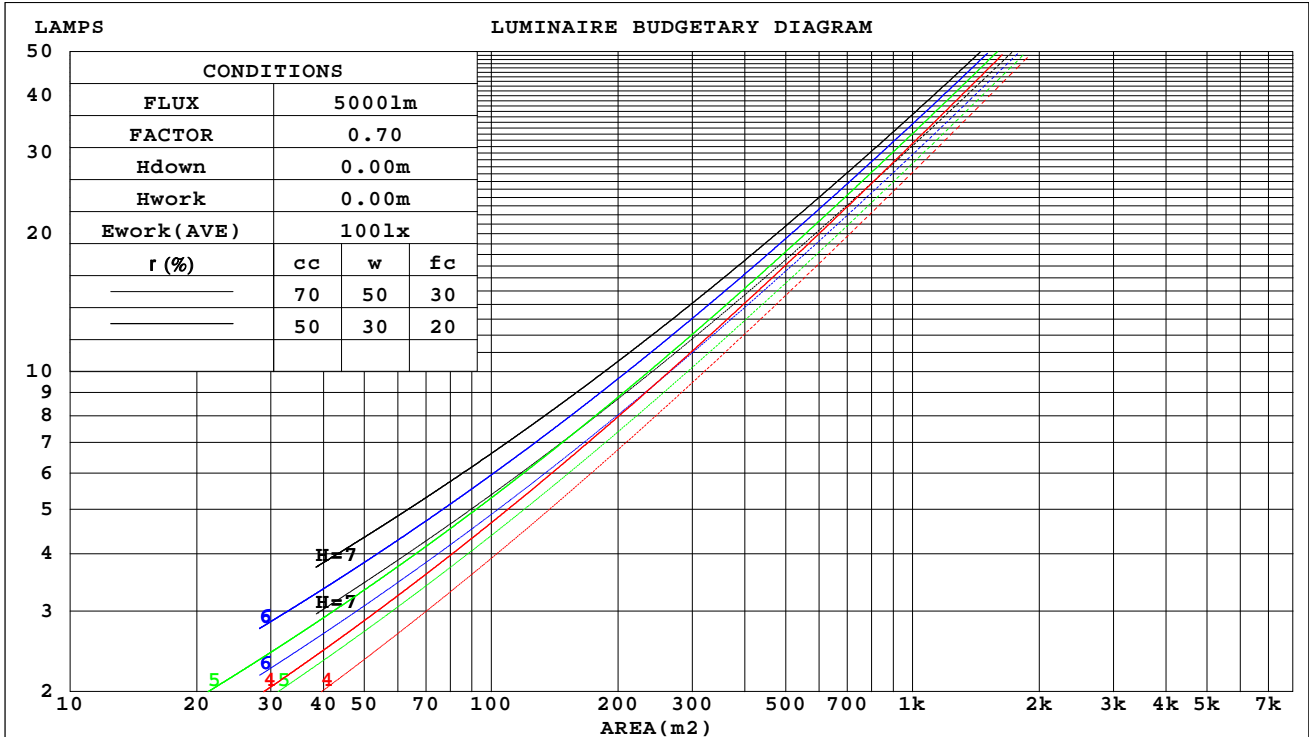
C Range: 0 - 360DEG  
 C Interval: 30.0DEG  
 Test Speed: HIGH  
 Temperature: 25.3DEG  
 Operators:  
 Test Date: 2021-12-23

g Range: 0 - 180DEG  
 g Interval: 1.0DEG  
 Test System: EVERFINE GO-2000B\_V1 SYSTEM V2.00.426  
 Humidity: 65.0%  
 Test Distance: 8.000m [K=1.0000]  
 Remarks:

CU AND LUMINAIRE BUDGETARY ESTIMATE DIAGRAM

NAME:	TYPE:	WEIGHT:
SPEC.:	DIM.:	SERIAL No.:
MFR.: ASD LIGHTING CORP	SUR.: 0.175*0.175	Shielding Angle:

rcc	80%			70%			50%			30%			10%			0
rw	50%	30%	10%	50%	30%	10%	50%	30%	10%	50%	30%	10%	50%	30%	10%	0
rFc	20%			20%			20%			20%			20%			0
RCR	RCR:Room Cavity Ratio						Coefficients of Utilization(CU)									
0.0	1.19	1.19	1.19	1.16	1.16	1.16	1.11	1.11	1.11	1.06	1.06	1.06	1.01	1.01	1.01	.99
1.0	1.05	1.01	.98	1.03	.99	.96	.99	.96	.93	.95	.92	.90	.91	.89	.87	.85
2.0	.93	.87	.81	.91	.85	.80	.87	.82	.78	.84	.80	.76	.81	.78	.75	.72
3.0	.82	.75	.69	.81	.74	.68	.78	.72	.67	.75	.70	.66	.72	.68	.64	.62
4.0	.74	.65	.59	.72	.65	.59	.70	.63	.58	.67	.62	.57	.65	.60	.56	.54
5.0	.66	.58	.51	.65	.57	.51	.63	.56	.51	.61	.55	.50	.59	.54	.49	.47
6.0	.60	.51	.45	.59	.51	.45	.57	.50	.45	.55	.49	.44	.54	.48	.44	.42
7.0	.55	.46	.40	.54	.46	.40	.52	.45	.40	.51	.44	.39	.49	.44	.39	.37
8.0	.50	.42	.36	.49	.41	.36	.48	.41	.36	.47	.40	.36	.45	.40	.35	.33
9.0	.46	.38	.33	.45	.38	.33	.44	.37	.32	.43	.37	.32	.42	.36	.32	.30
10.0	.43	.35	.30	.42	.35	.30	.41	.34	.30	.40	.34	.29	.39	.33	.29	.28



C Range: 0 - 360DEG  
 C Interval: 30.0DEG  
 Test Speed: HIGH  
 Temperature:25.3DEG  
 Operators:  
 Test Date:2021-12-23

g Range: 0 - 180DEG  
 g Interval: 1.0DEG  
 Test System:EVERFINE GO-2000B\_V1 SYSTEM V2.00.426  
 Humidity:65.0%  
 Test Distance:8.000m [K=1.0000]  
 Remarks:

WEC AND CCEC

NAME:	TYPE:	WEIGHT:
SPEC.:	DIM.:	SERIAL No.:
MFR.: ASD LIGHTING CORP	SUR.: 0.175*0.175	Shielding Angle:

rcc	80%			70%			50%			30%			10%			0
rw	50%	30%	10%	50%	30%	10%	50%	30%	10%	50%	30%	10%	50%	30%	10%	0
rfc	20%			20%			20%			20%			20%			0
RCR	RCR:Room Cavity Ratio						Wall Exitance Coefficients(WEC)									
0.0																
1.0	.280	.159	.050	.273	.156	.049	.259	.149	.047	.247	.142	.046	.235	.136	.044	
2.0	.267	.146	.045	.260	.143	.044	.248	.138	.043	.237	.133	.042	.227	.128	.040	
3.0	.249	.133	.040	.244	.130	.039	.233	.126	.038	.223	.122	.038	.214	.119	.037	
4.0	.232	.121	.035	.227	.119	.035	.218	.115	.034	.209	.112	.034	.201	.109	.033	
5.0	.216	.110	.032	.212	.109	.032	.203	.106	.031	.196	.103	.031	.189	.101	.030	
6.0	.202	.101	.029	.198	.100	.029	.190	.098	.028	.184	.095	.028	.177	.093	.028	
7.0	.189	.093	.026	.185	.092	.026	.179	.090	.026	.173	.088	.026	.167	.087	.025	
8.0	.177	.087	.024	.174	.086	.024	.168	.084	.024	.163	.082	.024	.157	.081	.024	
9.0	.167	.081	.023	.164	.080	.022	.159	.078	.022	.154	.077	.022	.149	.076	.022	
10.0	.157	.075	.021	.155	.075	.021	.150	.073	.021	.145	.072	.021	.141	.071	.020	

rcc	80%			70%			50%			30%			10%			0
rw	50%	30%	10%	50%	30%	10%	50%	30%	10%	50%	30%	10%	50%	30%	10%	0
rfc	20%			20%			20%			20%			20%			0
RCR	RCR:Room Cavity Ratio						Ceiling Cavity Exitance Coefficients(CCEC)									
0.0	.197	.197	.197	.168	.168	.168	.115	.115	.115	.066	.066	.066	.021	.021	.021	
1.0	.185	.163	.143	.158	.140	.123	.108	.096	.085	.062	.056	.050	.020	.018	.016	
2.0	.176	.139	.108	.150	.119	.093	.103	.083	.065	.059	.048	.038	.019	.016	.012	
3.0	.167	.121	.084	.143	.104	.073	.098	.072	.051	.057	.042	.030	.018	.014	.010	
4.0	.159	.107	.068	.137	.093	.059	.094	.065	.041	.054	.038	.024	.018	.012	.008	
5.0	.152	.097	.056	.131	.084	.049	.090	.059	.034	.052	.034	.020	.017	.011	.007	
6.0	.145	.088	.048	.125	.077	.042	.086	.054	.029	.050	.032	.017	.016	.010	.006	
7.0	.138	.081	.041	.119	.071	.036	.082	.049	.026	.048	.029	.015	.015	.010	.005	
8.0	.132	.076	.037	.114	.066	.032	.079	.046	.023	.046	.027	.014	.015	.009	.004	
9.0	.127	.071	.033	.109	.061	.029	.076	.043	.020	.044	.025	.012	.014	.008	.004	
10.0	.121	.066	.030	.104	.058	.026	.072	.041	.019	.042	.024	.011	.014	.008	.004	

C Range: 0 - 360DEG  
 C Interval: 30.0DEG  
 Test Speed: HIGH  
 Temperature:25.3DEG  
 Operators:  
 Test Date:2021-12-23

g Range: 0 - 180DEG  
 g Interval: 1.0DEG  
 Test System:EVERFINE GO-2000B\_V1 SYSTEM V2.00.426  
 Humidity:65.0%  
 Test Distance:8.000m [K=1.0000]  
 Remarks:

UGR(Unified Glare Rating) Table

NAME:		TYPE:					WEIGHT:				
SPEC.:		DIM.:					SERIAL No.:				
MFR.: ASD LIGHTING CORP		SUR.: 0.175*0.175					Shielding Angle:				
ceiling/cavity	0.7	0.7	0.5	0.5	0.3	0.7	0.7	0.5	0.5	0.3	
walls	0.5	0.3	0.5	0.3	0.3	0.5	0.3	0.5	0.3	0.3	
working plane	0.2	0.2	0.2	0.2	0.2	0.2	0.2	0.2	0.2	0.2	
Room dimensions	Viewed crosswise					Viewed endwise					
x = 2H y = 2H	19.3	20.7	19.6	20.9	21.1	19.8	21.3	20.1	21.5	21.7	
3H	20.1	21.4	20.4	21.7	21.9	20.8	22.2	21.2	22.4	22.6	
4H	20.4	21.6	20.7	21.9	22.1	21.2	22.5	21.5	22.7	23.0	
6H	20.5	21.7	20.8	21.9	22.2	21.5	22.6	21.8	22.9	23.2	
8H	20.5	21.6	20.9	21.9	22.2	21.5	22.7	21.9	23.0	23.3	
12H	20.5	21.6	20.8	21.9	22.2	21.6	22.6	21.9	23.0	23.3	
4H 2H	19.7	20.9	20.0	21.2	21.5	20.2	21.4	20.5	21.7	21.9	
3H	20.7	21.8	21.1	22.1	22.4	21.3	22.4	21.7	22.7	23.0	
4H	21.1	22.0	21.4	22.4	22.7	21.8	22.8	22.2	23.1	23.5	
6H	21.3	22.1	21.7	22.5	22.9	22.2	23.0	22.6	23.4	23.8	
8H	21.3	22.1	21.7	22.5	22.9	22.3	23.1	22.7	23.5	23.9	
12H	21.3	22.0	21.7	22.4	22.8	22.3	23.1	22.8	23.5	23.9	
8H 4H	21.2	22.0	21.6	22.4	22.8	21.9	22.7	22.3	23.1	23.5	
6H	21.5	22.1	21.9	22.6	23.0	22.3	23.0	22.8	23.4	23.9	
8H	21.6	22.1	22.0	22.6	23.0	22.5	23.1	23.0	23.5	24.0	
12H	21.6	22.1	22.1	22.5	23.0	22.6	23.1	23.1	23.6	24.1	
12H 4H	21.2	21.9	21.6	22.3	22.7	21.9	22.6	22.3	23.0	23.4	
6H	21.5	22.1	22.0	22.5	23.0	22.3	22.9	22.8	23.4	23.8	
8H	21.6	22.1	22.1	22.5	23.0	22.5	23.0	23.0	23.5	24.0	
Variations with the observer position at spacings(CIE Pub.117):											
S = 1.0H	+ 0.4 / - 0.5					+ 0.3 / - 0.3					
1.5H	+ 0.2 / - 0.3					+ 0.2 / - 0.2					
2.0H	+ 0.6 / - 0.7					+ 0.6 / - 0.6					

CIE Pub.117, 841.7 lm Total Lamp Luminous Flux Correct (8log(F/F0) = -0.6)  
 Area: 0.03 m2

C Range: 0 - 360DEG  
 C Interval: 30.0DEG  
 Test Speed: HIGH  
 Temperature:25.3DEG  
 Operators:  
 Test Date:2021-12-23

g Range: 0 - 180DEG  
 g Interval: 1.0DEG  
 Test System:EVERFINE GO-2000B\_V1 SYSTEM V2.00.426  
 Humidity:65.0%  
 Test Distance:8.000m [K=1.0000]  
 Remarks:

UTILIZATION FACTORS TABLE

NAME:	TYPE:	WEIGHT:
SPEC.:	DIM.:	SERIAL No.:
MFR.: ASD LIGHTING CORP	SUR.: 0.175*0.175	Shielding Angle:

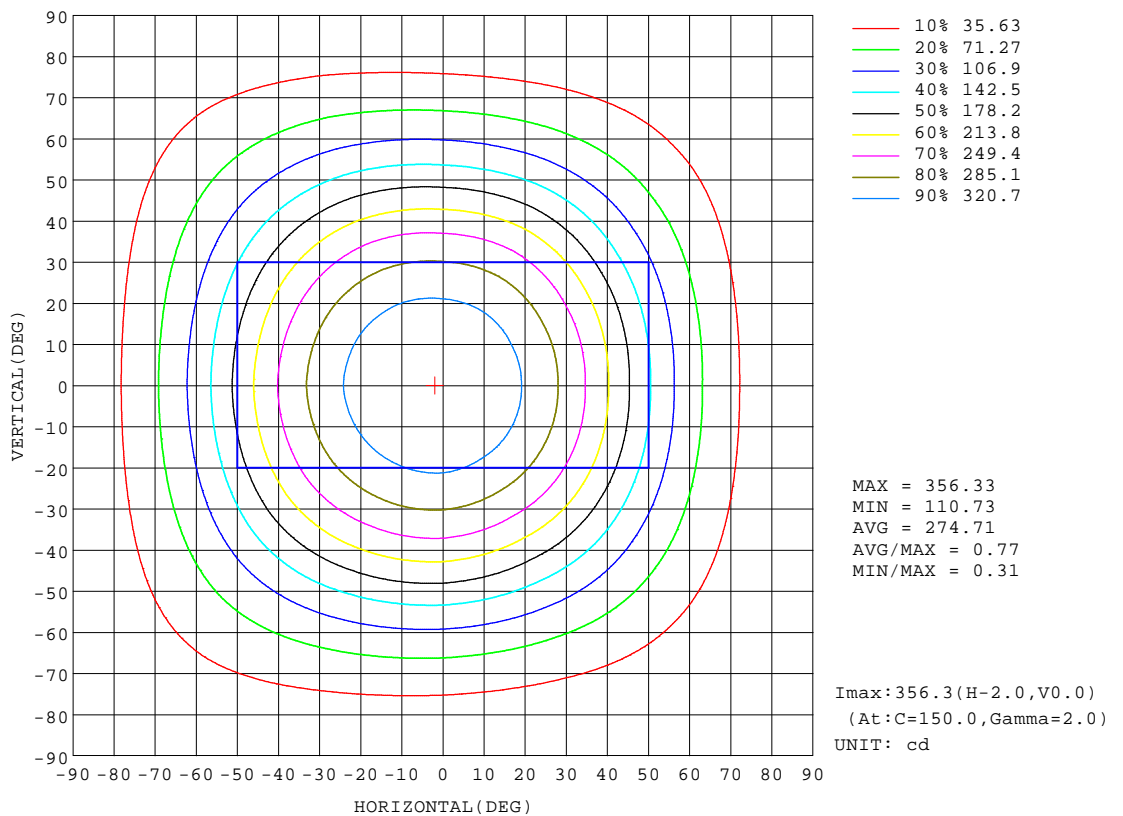
REFLECTANCE										
Ceiling	0.8	0.8	0.8	0.7	0.7	0.7	0.5	0.5	0.5	0
Walls	0.7	0.5	0.3	0.7	0.5	0.3	0.7	0.5	0.3	0
Working plane	0.2	0.2	0.2	0.2	0.2	0.2	0.2	0.2	0.2	0
ROOM INDEX	UTILIZATION FACTORS(PERCENT) $k(RI) \times RCR = 5$									
k = 0.60	61	50	44	61	50	44	59	50	44	38
0.80	71	61	54	70	60	54	69	59	53	47
1.00	80	69	63	78	69	62	76	70	62	55
1.25	86	77	70	85	76	70	82	75	69	62
1.50	91	82	76	90	81	75	87	79	74	67
2.00	97	90	84	96	88	83	92	86	82	74
2.50	101	94	88	99	92	87	95	90	85	77
3.00	104	98	93	102	96	92	98	93	89	81
4.00	107	102	98	105	101	97	101	97	94	85
5.00	110	105	102	107	103	100	103	100	97	88
ROOM INDEX	UF(total)									Direct
According to DIN EN 13032-2 2004			Suspended				SHRNOM = 1.25			

C Range: 0 - 360DEG  
 C Interval: 30.0DEG  
 Test Speed: HIGH  
 Temperature: 25.3DEG  
 Operators:  
 Test Date: 2021-12-23

g Range: 0 - 180DEG  
 g Interval: 1.0DEG  
 Test System: EVERFINE GO-2000B\_V1 SYSTEM V2.00.426  
 Humidity: 65.0%  
 Test Distance: 8.000m [K=1.0000]  
 Remarks:

ISOCANDELA DIAGRAM

NAME:	TYPE:	WEIGHT:
SPEC.:	DIM.:	SERIAL No.:
MFR.: ASD LIGHTING CORP	SUR.: 0.175*0.175	Shielding Angle:



C Range: 0 - 360DEG  
 C Interval: 30.0DEG  
 Test Speed: HIGH  
 Temperature: 25.3DEG  
 Operators:  
 Test Date: 2021-12-23

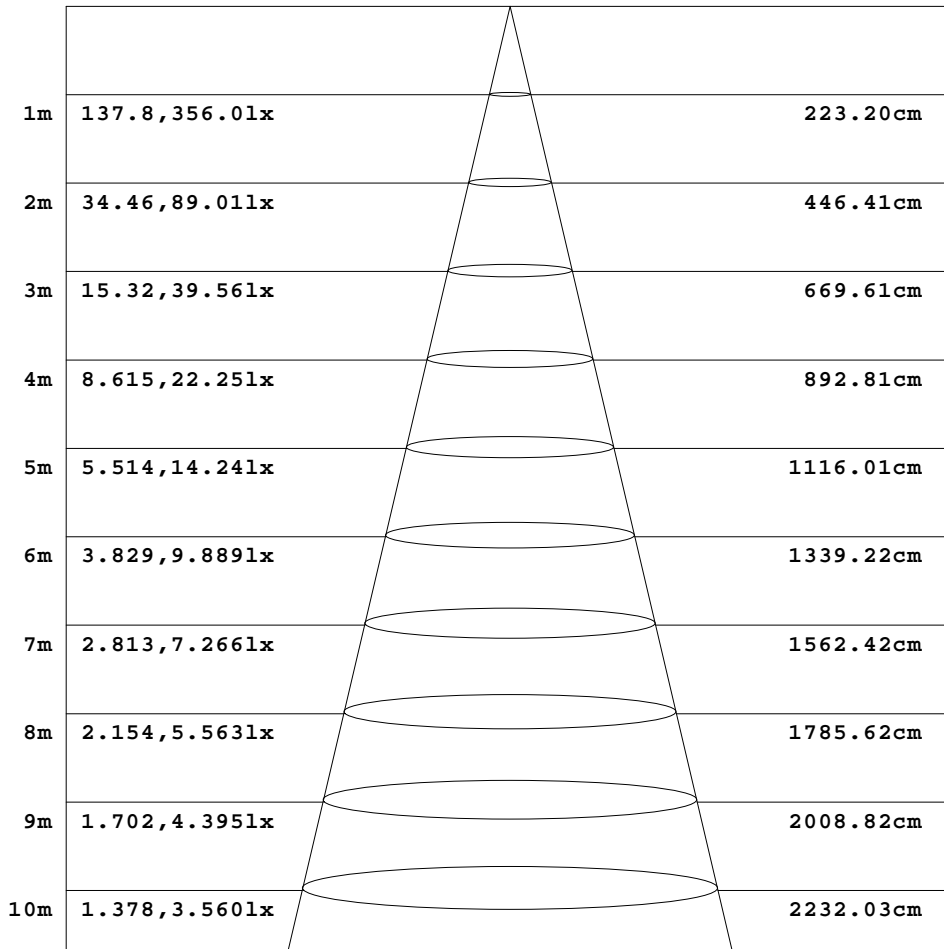
g Range: 0 - 180DEG  
 g Interval: 1.0DEG  
 Test System: EVERFINE GO-2000B\_V1 SYSTEM V2.00.426  
 Humidity: 65.0%  
 Test Distance: 8.000m [K=1.0000]  
 Remarks:



**AAI Figure**

NAME:	TYPE:	WEIGHT:
SPEC.:	DIM.:	SERIAL No.:
MFR.: ASD LIGHTING CORP	SUR.: 0.175*0.175	Shielding Angle:

Flux out:573.1 lm



Height                      Eavg, Emax                      Angle:96.28deg                      Diameter

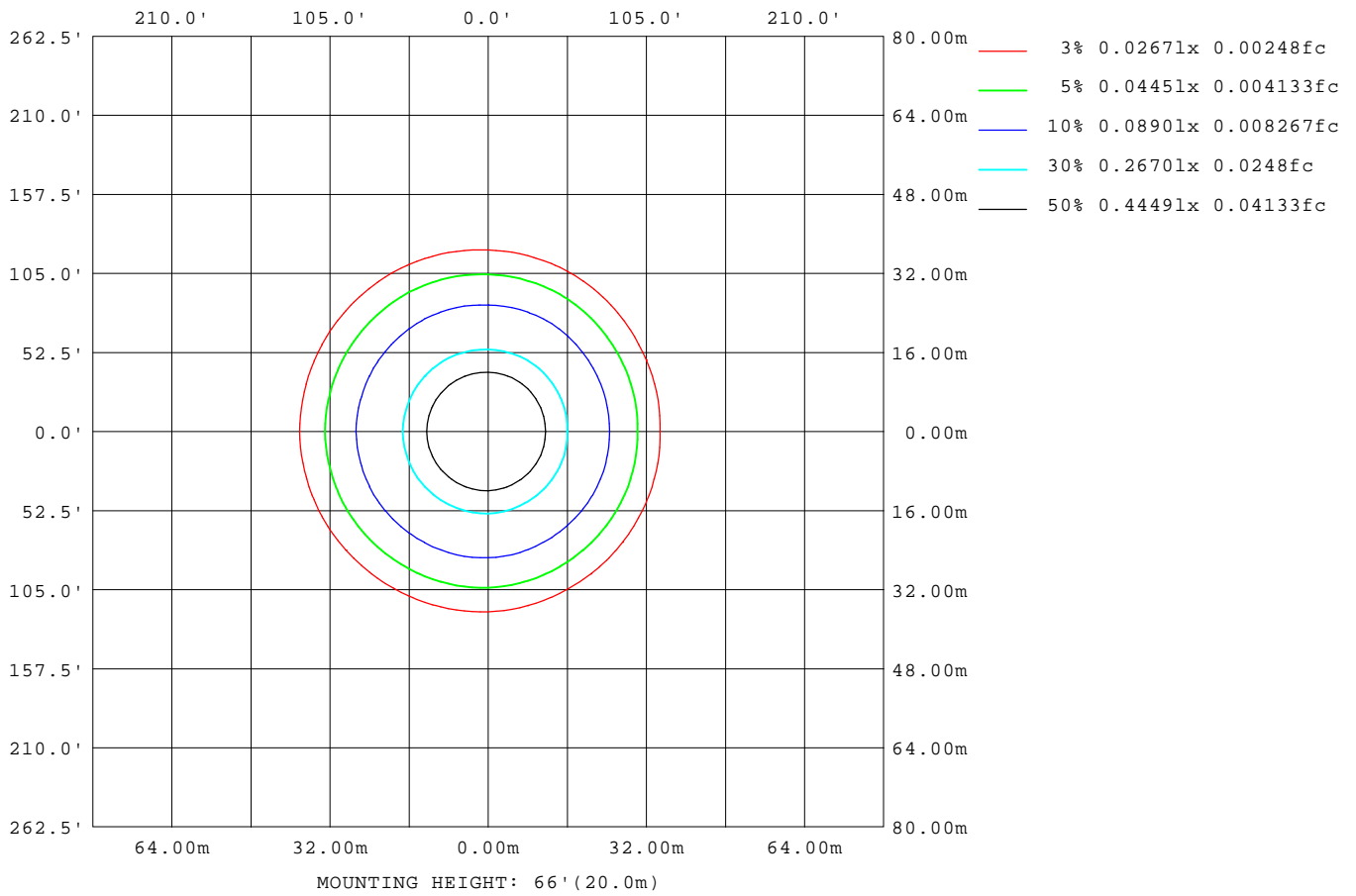
Note:The Curves indicate the illuminated area and the average illumination when the luminaire is at different distance.

C Range: 0 - 360DEG  
 C Interval: 30.0DEG  
 Test Speed: HIGH  
 Temperature:25.3DEG  
 Operators:  
 Test Date:2021-12-23

g Range: 0 - 180DEG  
 g Interval: 1.0DEG  
 Test System:EVERFINE GO-2000B\_V1 SYSTEM V2.00.426  
 Humidity:65.0%  
 Test Distance:8.000m [K=1.0000]  
 Remarks:

**ISOLUX DIAGRAM**

<b>NAME:</b>	<b>TYPE:</b>	<b>WEIGHT:</b>
<b>SPEC.:</b>	<b>DIM.:</b>	<b>SERIAL No.:</b>
<b>MFR.: ASD LIGHTING CORP</b>	<b>SUR.: 0.175*0.175</b>	<b>Shielding Angle:</b>



**C Range: 0 - 360DEG**  
**C Interval: 30.0DEG**  
**Test Speed: HIGH**  
**Temperature: 25.3DEG**  
**Operators:**  
**Test Date: 2021-12-23**

**g Range: 0 - 180DEG**  
**g Interval: 1.0DEG**  
**Test System: EVERFINE GO-2000B\_V1 SYSTEM V2.00.426**  
**Humidity: 65.0%**  
**Test Distance: 8.000m [K=1.0000]**  
**Remarks:**

LED Avg.L Report

NAME:	TYPE:	WEIGHT:
SPEC.:	DIM.:	SERIAL No.:
MFR.: ASD LIGHTING CORP	SUR.: 0.175*0.175	Shielding Angle:

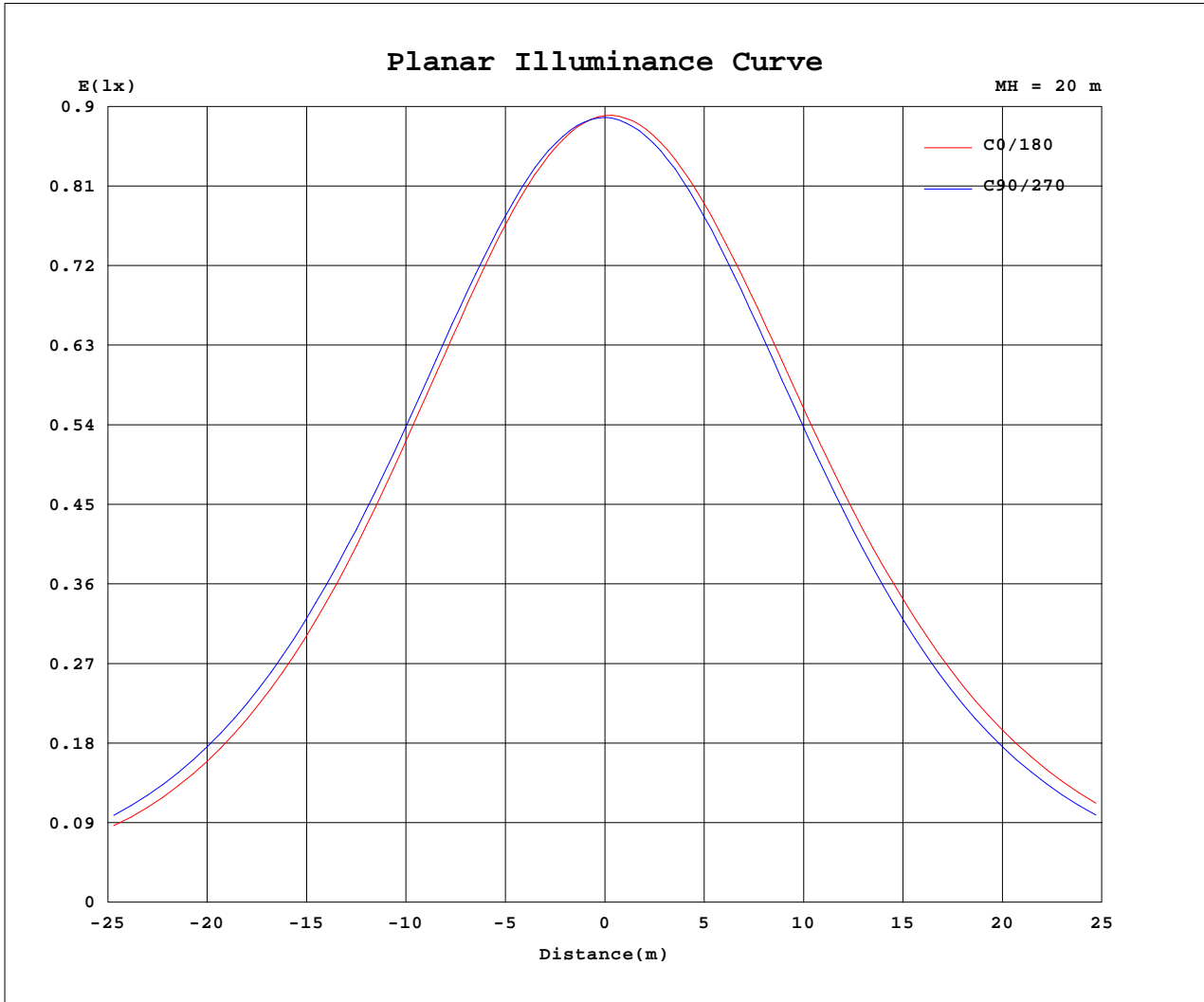
AvgL	cd/m2
L_0~180(65)av	6091
L_0~180(75)av	4754
L_0~180(85)av	3545
L_90~270(65)av	6181
L_90~270(75)av	4831
L_90~270(85)av	3379
L_45(65)av	6134
L_45(75)av	4782
L_45(85)av	3443

Standard: GB/T 29293-2012

C Range: 0 - 360DEG  
 C Interval: 30.0DEG  
 Test Speed: HIGH  
 Temperature:25.3DEG  
 Operators:  
 Test Date:2021-12-23

g Range: 0 - 180DEG  
 g Interval: 1.0DEG  
 Test System:EVERFINE GO-2000B\_V1 SYSTEM V2.00.426  
 Humidity:65.0%  
 Test Distance:8.000m [K=1.0000]  
 Remarks:

**Planar Illuminance Curve**



C Range: 0 - 360DEG  
 C Interval: 30.0DEG  
 Test Speed: HIGH  
 Temperature: 25.3DEG  
 Operators:  
 Test Date: 2021-12-23

g Range: 0 - 180DEG  
 g Interval: 1.0DEG  
 Test System: EVERFINE GO-2000B\_V1 SYSTEM V2.00.426  
 Humidity: 65.0%  
 Test Distance: 8.000m [K=1.0000]  
 Remarks:

LUMINOUS DISTRIBUTION INTENSITY DATA

NAME:	TYPE:	WEIGHT:
SPEC.:	DIM.:	SERIAL No.:
MFR.: ASD LIGHTING CORP	SUR.: 0.175*0.175	Shielding Angle:

Table--1

UNIT: cd

C(DEG) g (DEG)	0	30	60	90	120	150	180	210	240	270	300	330						
0	355	355	355	355	355	355	355	355	355	355	355	355						
5	351	352	352	353	354	355	355	355	354	353	353	352						
10	344	344	346	348	349	351	351	351	349	348	346	345						
15	333	334	335	338	340	343	344	342	341	338	336	334						
20	317	318	320	325	328	331	333	331	328	324	322	319						
25	298	299	302	307	311	315	317	315	312	307	304	300						
30	275	277	280	286	290	296	299	296	292	286	283	278						
35	247	250	253	262	266	274	276	273	268	261	258	251						
40	215	218	222	232	238	246	250	245	240	232	228	220						
45	180	184	189	199	206	216	220	215	209	199	195	186						
50	145	149	154	165	172	182	187	182	176	166	161	151						
55	114	117	123	132	139	147	152	148	143	134	128	119						
60	86.3	89.1	94.4	103	108	116	120	118	113	105	99.1	90.6						
65	62.8	65.2	70.0	77.1	82.0	88.2	91.6	90.1	86.6	79.7	73.8	66.4						
70	43.0	45.0	49.1	55.2	59.3	64.5	67.5	66.3	63.5	57.4	52.3	46.1						
75	26.6	28.1	31.5	36.6	40.1	44.6	47.2	46.1	43.7	38.4	34.1	29.0						
80	13.2	14.3	16.8	21.0	24.0	27.8	29.9	29.0	26.7	22.3	18.8	14.9						
85	3.16	3.84	5.38	8.43	10.8	13.8	15.4	14.7	12.7	9.24	6.72	4.21						
90	0.25	0.23	0.22	0.19	0.44	0.29	2.35	3.23	2.17	0.19	0.17	0.19						
95	0.37	0.35	0.33	0.30	0.27	0.24	0.19	0.19	0.21	0.24	0.27	0.29						
100	0.51	0.49	0.47	0.43	0.40	0.36	0.29	0.30	0.32	0.37	0.40	0.43						
105	0.66	0.65	0.63	0.58	0.55	0.50	0.42	0.43	0.46	0.51	0.54	0.58						
110	0.84	0.82	0.80	0.74	0.71	0.66	0.58	0.59	0.62	0.68	0.70	0.74						
115	1.02	1.01	0.98	0.93	0.88	0.84	0.74	0.75	0.79	0.85	0.88	0.92						
120	1.21	1.20	1.17	1.12	1.07	1.02	0.93	0.93	0.97	1.04	1.06	1.11						
125	1.40	1.38	1.35	1.31	1.26	1.21	1.12	1.12	1.15	1.23	1.26	1.29						
130	1.57	1.54	1.53	1.49	1.44	1.39	1.30	1.30	1.32	1.41	1.44	1.47						
135	1.73	1.71	1.69	1.66	1.61	1.56	1.47	1.47	1.50	1.58	1.59	1.62						
140	1.89	1.88	1.86	1.83	1.77	1.74	1.63	1.62	1.66	1.73	1.76	1.78						
145	2.05	2.03	2.02	1.98	1.93	1.90	1.80	1.80	1.81	1.88	1.90	1.94						
150	2.19	2.18	2.15	2.12	2.08	2.05	1.96	1.95	1.96	2.02	2.04	2.08						
155	2.34	2.31	2.28	2.25	2.21	2.19	2.12	2.09	2.11	2.17	2.18	2.22						
160	2.45	2.43	2.40	2.39	2.35	2.33	2.26	2.26	2.26	2.31	2.32	2.36						
165	2.57	2.54	2.53	2.51	2.48	2.47	2.41	2.41	2.41	2.45	2.46	2.48						
170	2.65	2.63	2.65	2.63	2.61	2.61	2.55	2.55	2.54	2.57	2.60	2.60						
175	2.71	2.72	2.73	2.70	2.70	2.71	2.66	2.67	2.66	2.67	2.70	2.69						
180	2.75	2.74	2.75	2.74	2.75	2.76	2.75	2.74	2.75	2.74	2.76	2.75						

C Range: 0 - 360DEG  
 C Interval: 30.0DEG  
 Test Speed: HIGH  
 Temperature:25.3DEG  
 Operators:  
 Test Date:2021-12-23

g Range: 0 - 180DEG  
 g Interval: 1.0DEG  
 Test System:EVERFINE GO-2000B\_V1 SYSTEM V2.00.426  
 Humidity:65.0%  
 Test Distance:8.000m [K=1.0000]  
 Remarks: