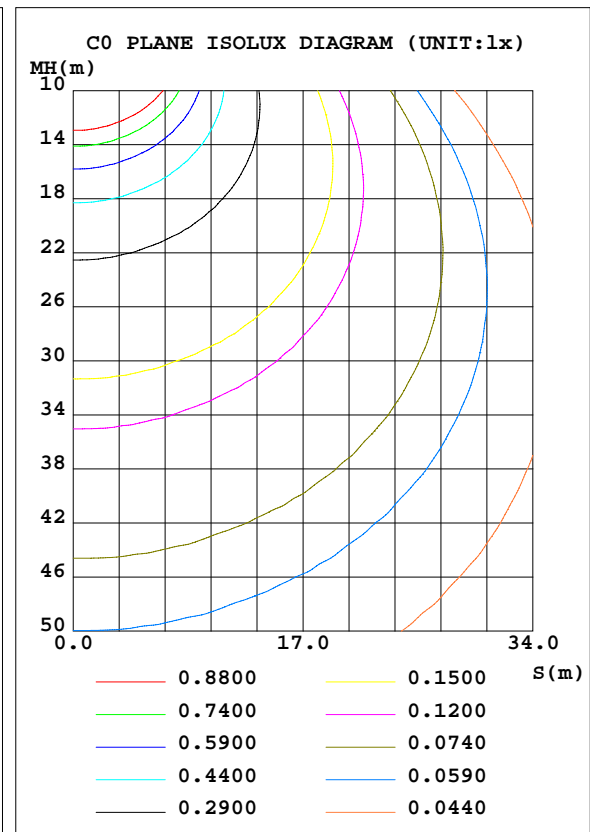
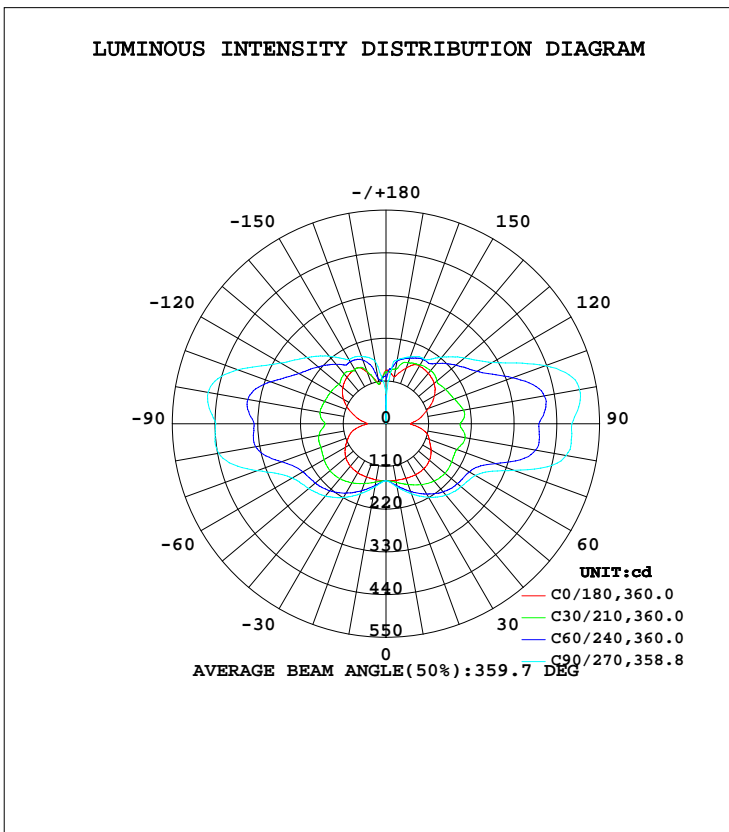


LUMINAIRE PHOTOMETRIC TEST REPORT

Test:U:277.00V I:0.1517A P:33.360W PF:0.7941 Freq:60.00Hz Lamp Flux:2838.52x1 lm		
NAME:	TYPE:LED	WEIGHT:
SPEC.:	DIM.:	SERIAL No.:
MFR.: ASD Lighting corp	SUR.:	Shielding Angle:

DATA OF LAMP		PHOTOMETRIC DATA Eff: 85.09 lm/W			
MODEL	ASD-LWS27-MV-48D36CC-BK	I _{max} (cd)	506.5	S/MH(C0/180)	1.50
NOMINAL POWER(W)	36	LOR(%)	100.0	S/MH(C90/270)	2.28
RATED VOLTAGE(V)	120-277	TOTAL FLUX(lm)	2838.5	η UP, DN(C0-180)	25.6,25.1
NOMINAL FLUX(lm)	2838.52	CIE CLASS	DIFFUSE	η UP, DN(C180-360)	24.6,24.6
LAMPS INSIDE	1	η up(%)	50.3	CIBSE SHR NOM	2.00
TEST VOLTAGE(V)	277	η down(%)	49.7	CIBSE SHR MAX	2.00



C Range: 0 - 360DEG
 C Interval: 15.0DEG
 Test Speed: HIGH
 Temperature: 25.0DEG
 Operators: Alan Wang
 Test Date: 08 May 2023

γ Range: 0 - 180DEG
 γ Interval: 1.0DEG
 Test System: EVERFINE GO-R5000_V2 SYSTEM V2.00.416
 Humidity: 43.5%
 Test Distance: 2.500m [K=1.0390]
 Remarks:

ZONAL FLUX DIAGRAM

ZONAL FLUX DIAGRAM:

γ	C0	C45	C90	C135	C180	C225	C270	C315	γ	Φ zone	Φ total	%lum,lamp
10	148.0	158.5	165.1	157.3	146.5	157.9	165.1	158.0	0- 10	14.55	14.55	0.51,0.51
20	149.7	177.3	192.1	173.8	146.2	174.7	192.0	176.0	10- 20	46.94	61.49	2.17,2.17
30	151.8	197.0	218.8	190.7	146.1	192.5	219.0	195.7	20- 30	84.26	145.7	5.13,5.13
40	151.5	214.2	240.0	204.4	142.8	208.0	242.7	213.1	30- 40	123.9	269.7	9.5,9.5
50	146.4	223.5	252.4	210.7	135.1	215.7	259.4	223.5	40- 50	160.7	430.4	15.2,15.2
60	134.2	225.0	266.0	210.1	120.9	218.2	278.8	228.6	50- 60	189.6	620.0	21.8,21.8
70	118.7	245.3	351.4	223.6	103.1	231.2	353.1	241.9	60- 70	219.4	839.4	29.6,29.6
80	98.50	298.0	471.3	270.0	81.01	254.4	437.7	273.4	70- 80	275.4	1115	39.3,39.3
90	63.42	293.7	478.5	269.2	47.85	246.8	438.1	266.1	80- 90	297.2	1412	49.7,49.7
100	90.34	308.1	506.1	286.4	72.00	263.9	464.8	283.0	90-100	304.4	1716	60.5,60.5
110	116.4	262.4	438.2	252.8	99.63	237.9	406.5	256.2	100-110	292.2	2009	70.8,70.8
120	144.0	225.0	316.1	215.2	126.3	211.3	313.2	229.6	110-120	235.8	2244	79.1,79.1
130	162.0	203.8	263.8	195.6	145.2	194.3	265.9	210.0	120-130	189.7	2434	85.8,85.8
140	169.7	186.3	223.6	179.0	156.5	175.1	227.1	188.0	130-140	152.0	2586	91.1,91.1
150	171.9	184.8	193.4	179.0	161.7	178.0	191.2	187.9	140-150	114.8	2701	95.2,95.2
160	153.0	175.0	183.3	170.9	141.4	163.8	184.5	181.0	150-160	80.91	2782	98,98
170	123.4	154.1	167.1	120.8	103.3	109.6	164.0	164.9	160-170	44.20	2826	99.6,99.6
180	138.0	130.4	49.25	129.3	137.3	131.7	77.54	124.5	170-180	12.47	2839	100,100
DEG	LUMINOUS INTENSITY:cd									UNIT:lm		

Conical surface Flux(90deg): 345.9 lm

%lum = 12.2%

%lamp = 12.2%

Conical surface Flux(120deg): 620.04 lm

%lum = 21.8%

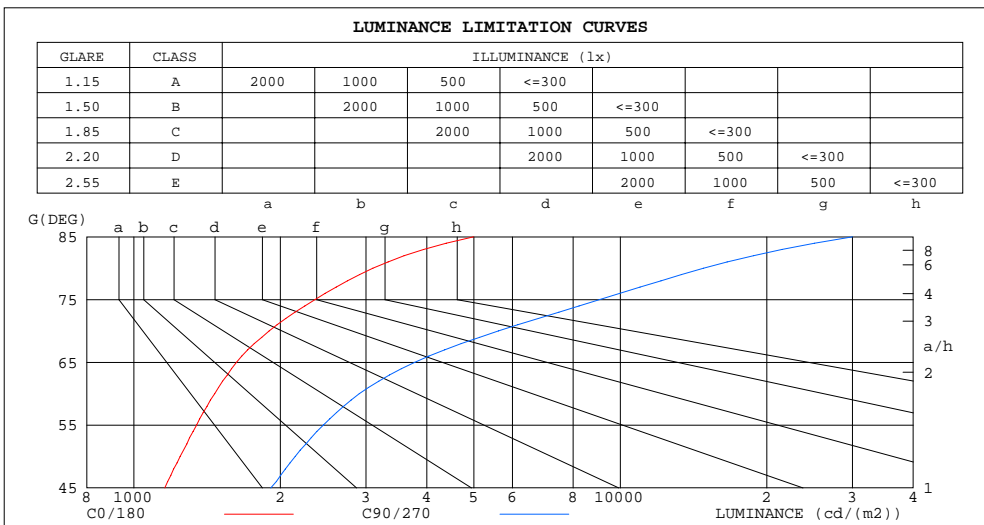
%lamp = 21.8%

C Range: 0 - 360DEG
 C Interval: 15.0DEG
 Test Speed: HIGH
 Temperature: 25.0DEG
 Operators: Alan Wang
 Test Date: 08 May 2023

γ Range: 0 - 180DEG
 γ Interval: 1.0DEG
 Test System: EVERFINE GO-R5000_V2 SYSTEM V2.00.416
 Humidity: 43.5%
 Test Distance: 2.500m [K=1.0390]
 Remarks:

LUMINANCE LIMITATION CURVES

Test:U:277.00V I:0.1517A P:33.360W PF:0.7941 Freq:60.00Hz Lamp Flux:2838.52x1 lm		
NAME:	TYPE:LED	WEIGHT:
SPEC.:	DIM.:	SERIAL No.:
MFR.: ASD Lighting corp	SUR.:	Shielding Angle:



LUMINANCE cd/(m2)		
G (DEG)	C0/180	C90/270
85	4993	30009
80	3100	14831
75	2358	9071
70	1896	5614
65	1626	3779
60	1466	2907
55	1346	2452
50	1245	2146
45	1158	1912

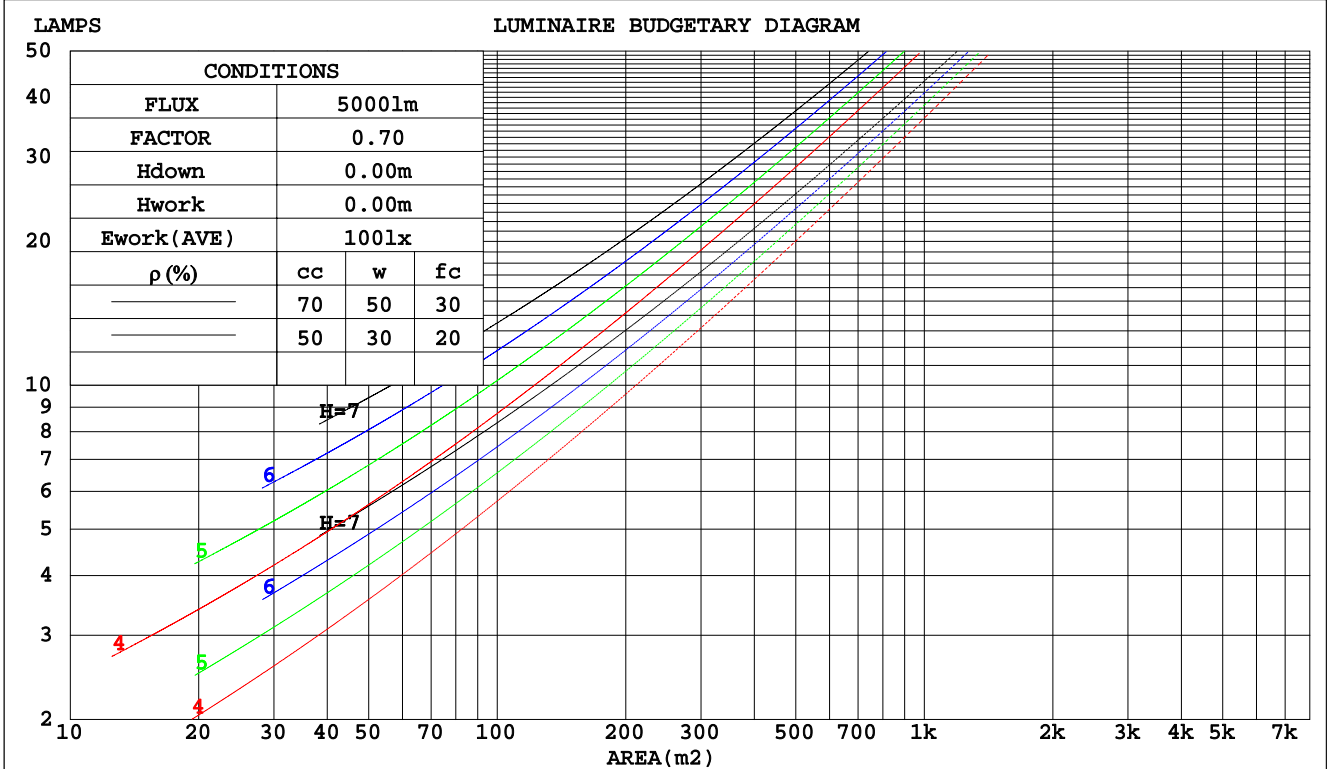
C Range: 0 - 360DEG
 C Interval: 15.0DEG
 Test Speed: HIGH
 Temperature: 25.0DEG
 Operators: Alan Wang
 Test Date: 08 May 2023

γ Range: 0 - 180DEG
 γ Interval: 1.0DEG
 Test System: EVERFINE GO-R5000_V2 SYSTEM V2.00.416
 Humidity: 43.5%
 Test Distance: 2.500m [K=1.0390]
 Remarks:

CU AND LUMINAIRE BUDGETARY ESTIMATE DIAGRAM

Test:U:277.00V I:0.1517A P:33.360W PF:0.7941 Freq:60.00Hz Lamp Flux:2838.52x1 lm		
NAME:	TYPE:LED	WEIGHT:
SPEC.:	DIM.:	SERIAL No.:
MFR.: ASD Lighting corp	SUR.:	Shielding Angle:

pcc	80%			70%			50%			30%			10%			0
	50%	30%	10%	50%	30%	10%	50%	30%	10%	50%	30%	10%	50%	30%	10%	0
pw																
pfc	20%			20%			20%			20%			20%			0
RCR	RCR:Room Cavity Ratio						Coefficients of Utilization(CU)									
0.0	1.07	1.07	1.07	.99	.99	.99	.83	.83	.83	.69	.69	.69	.56	.56	.56	.50
1.0	.86	.80	.75	.79	.74	.69	.65	.61	.58	.53	.50	.47	.41	.39	.37	.31
2.0	.73	.64	.57	.66	.59	.53	.55	.49	.44	.44	.39	.36	.34	.30	.28	.23
3.0	.62	.53	.46	.57	.49	.42	.47	.40	.35	.37	.32	.28	.28	.25	.22	.17
4.0	.54	.45	.38	.50	.41	.35	.41	.34	.29	.32	.27	.23	.25	.21	.18	.14
5.0	.48	.38	.31	.44	.35	.29	.36	.29	.24	.29	.23	.19	.22	.18	.15	.11
6.0	.42	.33	.27	.39	.31	.25	.32	.25	.20	.26	.20	.16	.20	.16	.12	.09
7.0	.38	.29	.23	.35	.27	.21	.29	.22	.18	.23	.18	.14	.18	.14	.11	.08
8.0	.34	.26	.20	.31	.24	.18	.26	.20	.15	.21	.16	.12	.16	.12	.09	.07
9.0	.31	.23	.17	.29	.21	.16	.24	.18	.13	.19	.14	.11	.15	.11	.08	.06
10.0	.28	.21	.15	.26	.19	.14	.22	.16	.12	.18	.13	.10	.14	.10	.07	.05



C Range: 0 - 360DEG
 C Interval: 15.0DEG
 Test Speed: HIGH
 Temperature: 25.0DEG
 Operators: Alan Wang
 Test Date: 08 May 2023

γ Range: 0 - 180DEG
 γ Interval: 1.0DEG
 Test System: EVERFINE GO-R5000_V2 SYSTEM V2.00.416
 Humidity: 43.5%
 Test Distance: 2.500m [K=1.0390]
 Remarks:

WEC AND CCEC

Test:U:277.00V I:0.1517A P:33.360W PF:0.7941 Freq:60.00Hz Lamp Flux:2838.52x1 lm		
NAME:	TYPE:LED	WEIGHT:
SPEC.:	DIM.:	SERIAL No.:
MFR.: ASD Lighting corp	SUR.:	Shielding Angle:

ρcc	80%			70%			50%			30%			10%			0
ρw	50%	30%	10%	50%	30%	10%	50%	30%	10%	50%	30%	10%	50%	30%	10%	0
ρfc	20%			20%			20%			20%			20%			0
RCR	RCR:Room Cavity Ratio						Wall Exitance Coefficients(WEC)									
0.0																
1.0	.420	.239	.076	.397	.227	.072	.355	.204	.065	.316	.182	.059	.281	.163	.052	
2.0	.347	.190	.058	.326	.180	.055	.288	.160	.050	.252	.142	.044	.219	.124	.039	
3.0	.301	.160	.048	.282	.151	.045	.247	.134	.041	.214	.117	.036	.184	.102	.032	
4.0	.267	.139	.041	.250	.131	.039	.217	.115	.034	.187	.101	.030	.159	.087	.026	
5.0	.240	.123	.035	.225	.115	.034	.195	.101	.030	.167	.088	.026	.141	.075	.023	
6.0	.219	.110	.031	.204	.103	.030	.177	.091	.026	.151	.079	.023	.127	.067	.020	
7.0	.201	.099	.028	.187	.093	.027	.162	.082	.024	.138	.071	.021	.116	.060	.018	
8.0	.186	.091	.025	.173	.085	.024	.150	.075	.021	.127	.065	.019	.106	.055	.016	
9.0	.172	.083	.023	.161	.078	.022	.139	.069	.019	.118	.059	.017	.099	.050	.014	
10.0	.161	.077	.021	.150	.073	.020	.130	.064	.018	.110	.055	.016	.092	.046	.013	

ρcc	80%			70%			50%			30%			10%			0
ρw	50%	30%	10%	50%	30%	10%	50%	30%	10%	50%	30%	10%	50%	30%	10%	0
ρfc	20%			20%			20%			20%			20%			0
RCR	RCR:Room Cavity Ratio						Ceiling Cavity Exitance Coefficients(CCEC)									
0.0	.573	.573	.573	.490	.490	.490	.334	.334	.334	.192	.192	.192	.061	.061	.061	
1.0	.574	.541	.512	.491	.464	.440	.336	.320	.305	.193	.185	.177	.062	.060	.057	
2.0	.568	.520	.480	.487	.448	.415	.334	.310	.289	.192	.180	.170	.062	.058	.055	
3.0	.561	.505	.461	.481	.436	.399	.330	.303	.280	.191	.177	.165	.061	.057	.054	
4.0	.554	.494	.448	.475	.427	.389	.327	.297	.274	.189	.174	.162	.061	.057	.053	
5.0	.546	.485	.439	.469	.419	.382	.323	.293	.270	.187	.172	.160	.060	.056	.053	
6.0	.539	.478	.433	.463	.414	.377	.320	.289	.267	.185	.170	.159	.060	.056	.052	
7.0	.532	.471	.429	.458	.409	.374	.316	.287	.265	.184	.169	.158	.059	.055	.052	
8.0	.526	.466	.425	.453	.404	.371	.313	.284	.263	.182	.168	.157	.059	.055	.052	
9.0	.520	.462	.423	.448	.401	.369	.310	.282	.262	.181	.166	.156	.059	.055	.052	
10.0	.514	.458	.421	.443	.398	.367	.307	.280	.261	.179	.165	.156	.058	.054	.052	

C Range: 0 - 360DEG
 C Interval: 15.0DEG
 Test Speed: HIGH
 Temperature: 25.0DEG
 Operators: Alan Wang
 Test Date: 08 May 2023

γ Range: 0 - 180DEG
 γ Interval: 1.0DEG
 Test System: EVERFINE GO-R5000_V2 SYSTEM V2.00.416
 Humidity: 43.5%
 Test Distance: 2.500m [K=1.0390]
 Remarks:

UGR(Unified Glare Rating) Table

Test:U:277.00V I:0.1517A P:33.360W PF:0.7941 Freq:60.00Hz Lamp Flux:2838.52x1 lm										
NAME:					TYPE:LED			WEIGHT:		
SPEC.:					DIM.:			SERIAL No.:		
MFR.: ASD Lighting corp					SUR.:			Shielding Angle:		
ceiling/cavity	0.7	0.7	0.5	0.5	0.3	0.7	0.7	0.5	0.5	0.3
walls	0.5	0.3	0.5	0.3	0.3	0.5	0.3	0.5	0.3	0.3
working plane	0.2	0.2	0.2	0.2	0.2	0.2	0.2	0.2	0.2	0.2
Room dimensions	Viewed crosswise					Viewed endwise				
x = 2H y = 2H	10.4	11.4	11.2	12.3	13.5	13.1	14.2	14.0	15.1	16.3
3H	12.8	13.8	13.7	14.7	15.9	17.4	18.4	18.3	19.3	20.5
4H	14.2	15.1	15.1	16.0	17.3	20.3	21.2	21.2	22.2	23.4
6H	15.6	16.5	16.5	17.4	18.6	23.3	24.1	24.2	25.1	26.3
8H	16.3	17.1	17.2	18.1	19.3	24.8	25.6	25.7	26.5	27.8
12H	17.0	17.8	17.9	18.8	20.0	26.3	27.1	27.2	28.1	29.3
4H 2H	12.1	13.0	13.0	14.0	15.2	13.9	14.8	14.8	15.7	16.9
3H	14.8	15.6	15.7	16.6	17.8	18.4	19.2	19.4	20.2	21.4
4H	16.3	17.1	17.3	18.0	19.3	21.4	22.2	22.4	23.2	24.4
6H	17.8	18.5	18.8	19.5	20.8	24.6	25.3	25.6	26.2	27.5
8H	18.5	19.2	19.5	20.2	21.5	26.2	26.8	27.1	27.8	29.1
12H	19.3	19.9	20.3	20.9	22.2	27.8	28.4	28.8	29.4	30.7
8H 4H	18.3	18.9	19.3	19.9	21.2	21.9	22.5	22.9	23.5	24.8
6H	20.1	20.6	21.1	21.6	23.0	25.3	25.9	26.3	26.9	28.2
8H	20.9	21.4	22.0	22.5	23.8	27.1	27.6	28.1	28.6	30.0
12H	21.8	22.2	22.8	23.3	24.6	29.1	29.5	30.1	30.5	31.9
12H 4H	19.1	19.7	20.1	20.7	22.0	21.9	22.5	22.9	23.5	24.8
6H	21.1	21.6	22.1	22.6	24.0	25.5	25.9	26.5	27.0	28.3
8H	22.1	22.6	23.2	23.6	25.0	27.4	27.8	28.4	28.8	30.2
Variations with the observer position at spacings:										
S = 1.0H	+ 0.1 / - 0.1					+ 0.1 / - 0.1				
1.5H	+ 0.2 / - 0.2					+ 0.3 / - 0.3				
2.0H	+ 0.3 / - 0.4					+ 0.3 / - 0.4				

CIE Pub.117, 2839 lm Total Lamp Luminous Flux Corrected (8log(F/F0) = 3.6)
 Area: 0.183 m2

C Range: 0 - 360DEG
 C Interval: 15.0DEG
 Test Speed: HIGH
 Temperature: 25.0DEG
 Operators: Alan Wang
 Test Date: 08 May 2023

γ Range: 0 - 180DEG
 γ Interval: 1.0DEG
 Test System: EVERFINE GO-R5000_V2 SYSTEM V2.00.416
 Humidity: 43.5%
 Test Distance: 2.500m [K=1.0390]
 Remarks:

UTILIZATION FACTORS TABLE

Test:U:277.00V I:0.1517A P:33.360W PF:0.7941 Freq:60.00Hz Lamp Flux:2838.52x1 lm		
NAME:	TYPE:LED	WEIGHT:
SPEC.:	DIM.:	SERIAL No.:
MFR.: ASD Lighting corp	SUR.:	Shielding Angle:

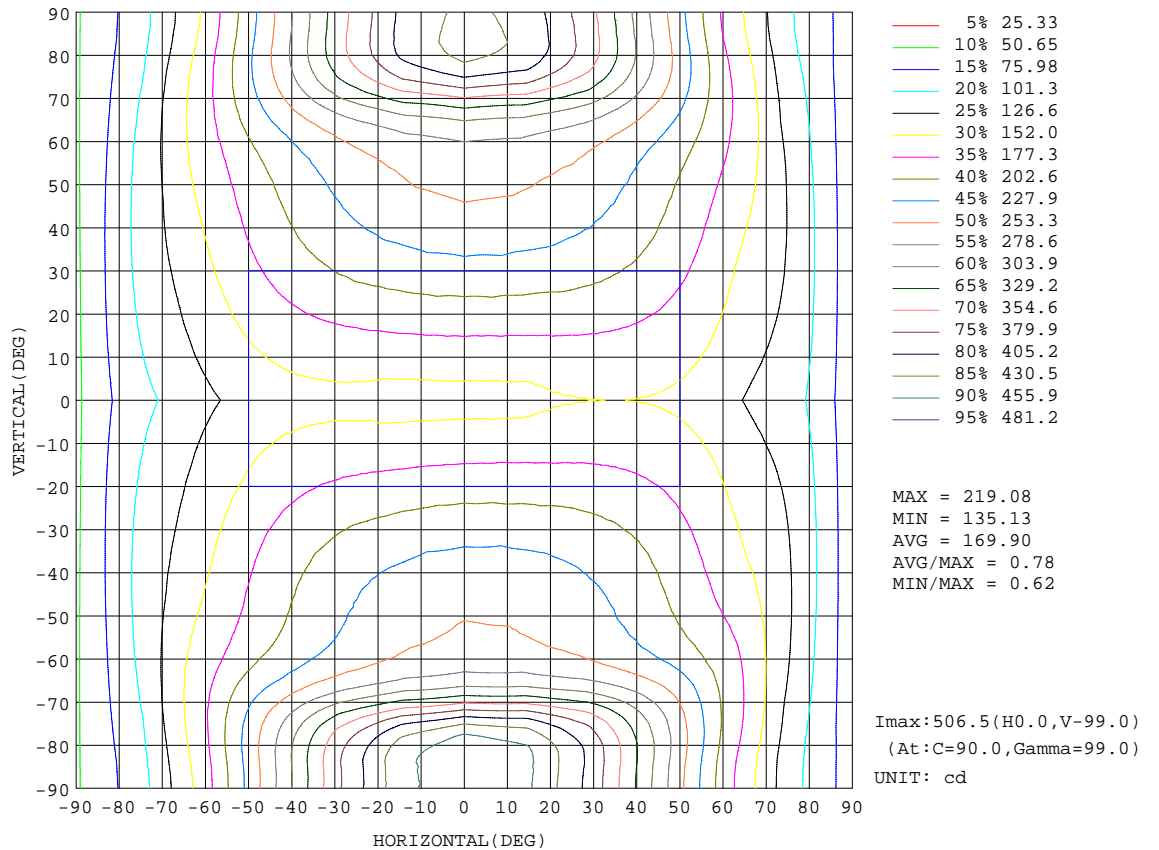
REFLECTANCE										
Ceiling	0.8	0.8	0.8	0.7	0.7	0.7	0.5	0.5	0.5	0
Walls	0.7	0.5	0.3	0.7	0.5	0.3	0.7	0.5	0.3	0
Working plane	0.2	0.2	0.2	0.2	0.2	0.2	0.2	0.2	0.2	0
ROOM INDEX	UTILIZATION FACTORS(PERCENT) $k(RI) \times RCR = 5$									
k = 0.60	36	23	16	34	22	15	30	20	14	7
0.80	44	30	22	41	29	21	36	26	19	9
1.00	51	37	28	48	35	26	42	33	24	12
1.25	58	44	34	54	41	32	46	36	28	15
1.50	63	49	39	58	46	37	50	40	33	17
2.00	71	58	48	65	54	45	56	46	39	21
2.50	76	64	54	70	59	51	59	51	44	24
3.00	80	69	60	74	64	56	62	54	48	26
4.00	85	75	67	78	70	63	66	59	54	30
5.00	89	80	73	82	74	67	69	63	58	32
ROOM INDEX	UF(total)									Direct
According to DIN EN 13032-2 2004			Suspended				SHRNOM = 1.25			

C Range: 0 - 360DEG
 C Interval: 15.0DEG
 Test Speed: HIGH
 Temperature: 25.0DEG
 Operators: Alan Wang
 Test Date: 08 May 2023

γ Range: 0 - 180DEG
 γ Interval: 1.0DEG
 Test System: EVERFINE GO-R5000_V2 SYSTEM V2.00.416
 Humidity: 43.5%
 Test Distance: 2.500m [K=1.0390]
 Remarks:

ISOCANDELA DIAGRAM

Test:U:277.00V I:0.1517A P:33.360W PF:0.7941 Freq:60.00Hz Lamp Flux:2838.52x1 lm		
NAME:	TYPE:LED	WEIGHT:
SPEC.:	DIM.:	SERIAL No.:
MFR.: ASD Lighting corp	SUR.:	Shielding Angle:

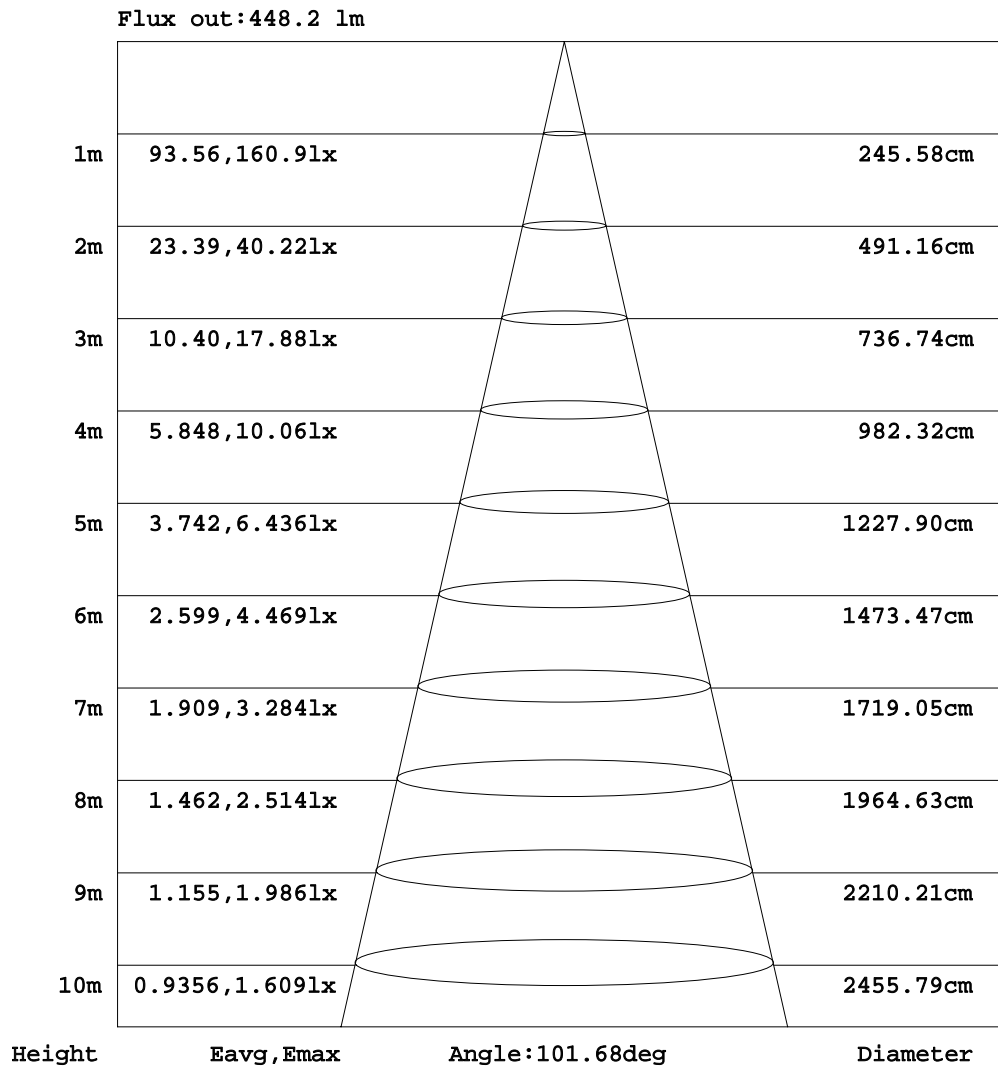


C Range: 0 - 360DEG
 C Interval: 15.0DEG
 Test Speed: HIGH
 Temperature: 25.0DEG
 Operators: Alan Wang
 Test Date: 08 May 2023

γ Range: 0 - 180DEG
 γ Interval: 1.0DEG
 Test System: EVERFINE GO-R5000_V2 SYSTEM V2.00.416
 Humidity: 43.5%
 Test Distance: 2.500m [K=1.0390]
 Remarks:

AAI Figure

Test:U:277.00V I:0.1517A P:33.360W PF:0.7941 Freq:60.00Hz Lamp Flux:2838.52x1 lm		
NAME:	TYPE:LED	WEIGHT:
SPEC.:	DIM.:	SERIAL No.:
MFR.: ASD Lighting corp	SUR.:	Shielding Angle:



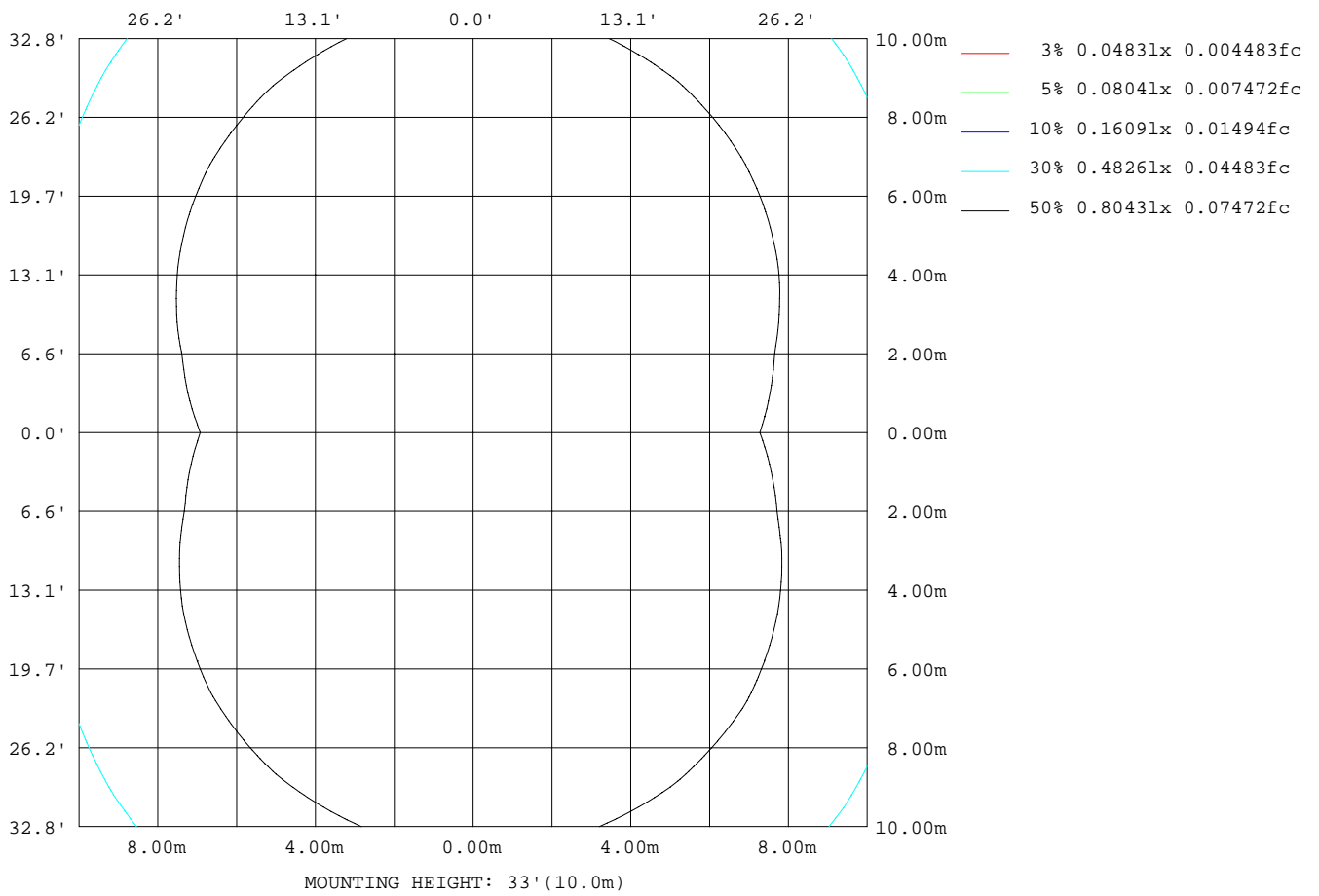
Note:The Curves indicate the illuminated area and the average illumination when the luminaire is at different distance.

C Range: 0 - 360DEG
 C Interval: 15.0DEG
 Test Speed: HIGH
 Temperature: 25.0DEG
 Operators:Alan Wang
 Test Date:08 May 2023

γ Range: 0 - 180DEG
 γ Interval: 1.0DEG
 Test System:EVERFINE GO-R5000_V2 SYSTEM V2.00.416
 Humidity: 43.5%
 Test Distance:2.500m [K=1.0390]
 Remarks:

ISOLUX DIAGRAM

Test:U:277.00V I:0.1517A P:33.360W PF:0.7941 Freq:60.00Hz Lamp Flux:2838.52x1 lm		
NAME:	TYPE:LED	WEIGHT:
SPEC.:	DIM.:	SERIAL No.:
MFR.: ASD Lighting corp	SUR.:	Shielding Angle:



C Range: 0 - 360DEG
 C Interval: 15.0DEG
 Test Speed: HIGH
 Temperature: 25.0DEG
 Operators: Alan Wang
 Test Date: 08 May 2023

γ Range: 0 - 180DEG
 γ Interval: 1.0DEG
 Test System: EVERFINE GO-R5000_V2 SYSTEM V2.00.416
 Humidity: 43.5%
 Test Distance: 2.500m [K=1.0390]
 Remarks:

LED Avg.L Report

Test:U:277.00V I:0.1517A P:33.360W PF:0.7941 Freq:60.00Hz Lamp Flux:2838.52x1 lm		
NAME:	TYPE:LED	WEIGHT:
SPEC.:	DIM.:	SERIAL No.:
MFR.: ASD Lighting corp	SUR.:	Shielding Angle:

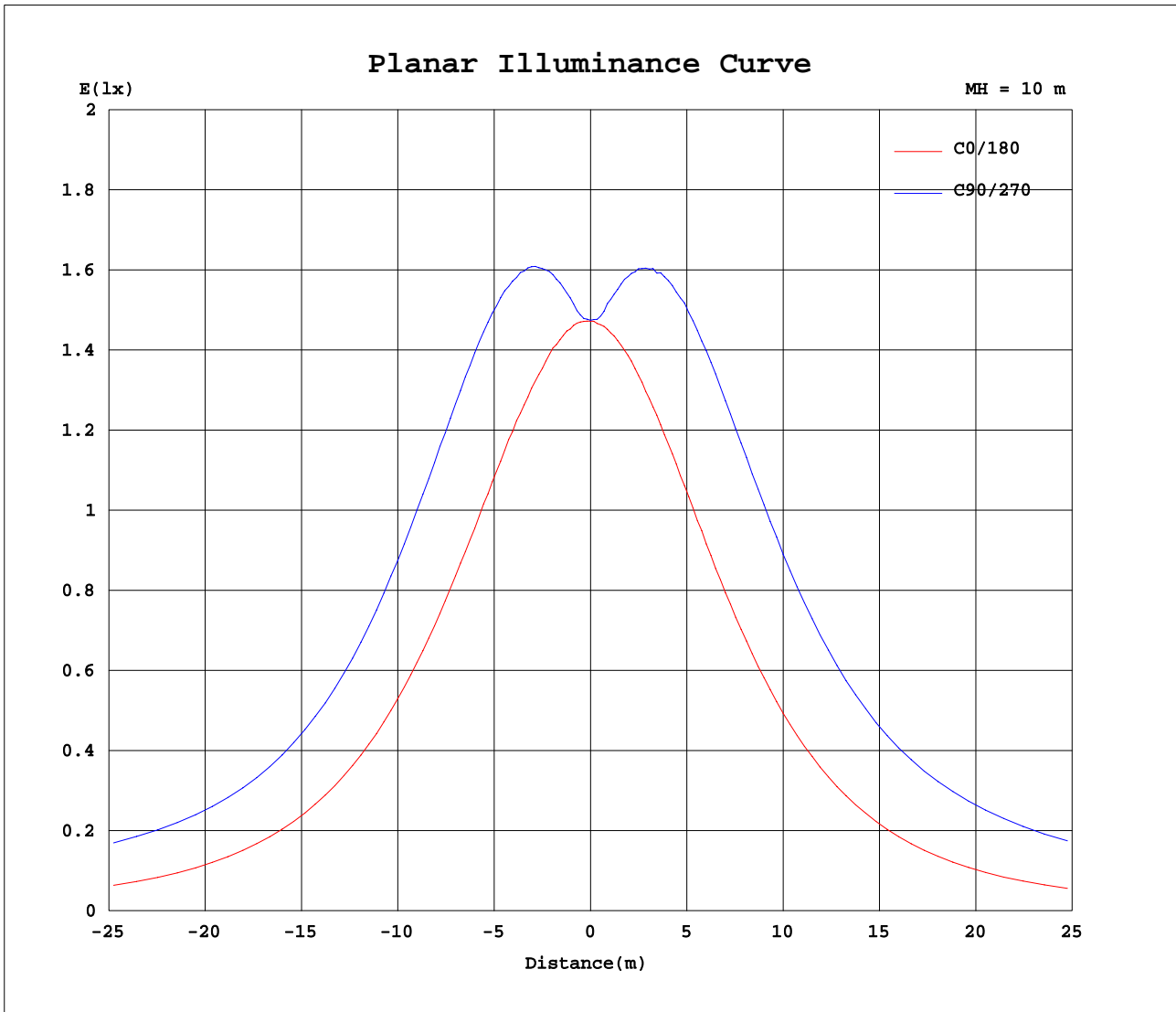
AvgL	cd/m2
L_0~180(65)av	1535
L_0~180(75)av	2170
L_0~180(85)av	4500
L_90~270(65)av	3864
L_90~270(75)av	8826
L_90~270(85)av	28856
L_45(65)av	2891
L_45(75)av	5440
L_45(85)av	17160

Standard: GB/T 29293-2012

C Range: 0 - 360DEG
C Interval: 15.0DEG
Test Speed: HIGH
Temperature: 25.0DEG
Operators: Alan Wang
Test Date: 08 May 2023

γ Range: 0 - 180DEG
 γ Interval: 1.0DEG
Test System: EVERFINE GO-R5000_V2 SYSTEM V2.00.416
Humidity: 43.5%
Test Distance: 2.500m [K=1.0390]
Remarks:

Planar Illuminance Curve



C Range: 0 - 360DEG
 C Interval: 15.0DEG
 Test Speed: HIGH
 Temperature: 25.0DEG
 Operators: Alan Wang
 Test Date: 08 May 2023

γ Range: 0 - 180DEG
 γ Interval: 1.0DEG
 Test System: EVERFINE GO-R5000_V2 SYSTEM V2.00.416
 Humidity: 43.5%
 Test Distance: 2.500m [K=1.0390]
 Remarks:

LUMINOUS DISTRIBUTION INTENSITY DATA

Test:U:277.00V I:0.1517A P:33.360W PF:0.7941 Freq:60.00Hz Lamp Flux:2838.52x1 lm		
NAME:	TYPE:LED	WEIGHT:
SPEC.:	DIM.:	SERIAL No.:
MFR.: ASD Lighting corp	SUR.:	Shielding Angle:

Table--1

UNIT: cd

C(DEG) γ (DEG)	0	15	30	45	60	75	90	105	120	135	150	165	180	195	210	225	240	255	270
0	147	148	147	148	147	148	147	148	148	148	147	148	147	148	147	148	147	148	147
5	148	148	148	150	152	153	153	153	152	150	148	147	147	147	148	150	152	153	153
10	148	149	154	159	162	164	165	164	161	157	152	148	147	148	153	158	161	164	165
15	149	152	160	168	174	177	178	176	172	165	158	149	146	150	158	166	172	176	178
20	150	155	167	177	186	191	192	189	183	174	163	152	146	153	164	175	184	189	192
25	151	160	174	187	197	204	206	202	194	182	169	154	146	156	170	184	195	203	206
30	152	163	181	197	209	217	219	214	205	191	174	157	146	158	175	192	206	216	219
35	152	167	188	207	220	229	230	226	214	198	179	158	145	160	181	200	217	228	232
40	151	170	193	214	229	238	240	235	222	204	183	159	143	161	185	208	226	237	243
45	150	170	197	220	236	246	247	241	228	209	184	158	139	161	187	213	233	246	252
50	146	170	199	223	240	250	252	245	232	211	185	156	135	158	188	216	237	253	259
55	141	167	198	225	243	254	257	249	234	211	183	152	129	155	187	217	242	259	267
60	134	162	196	225	248	262	266	257	236	210	180	146	121	149	185	218	248	269	279
65	126	157	193	229	262	285	292	277	247	212	176	139	112	143	181	222	261	291	305
70	119	152	194	245	300	341	351	327	279	224	175	133	103	136	179	231	287	333	353
75	112	149	203	277	358	415	430	398	331	248	178	127	93.9	129	179	246	320	380	406
80	98.5	141	207	298	391	454	471	438	366	270	180	118	81.0	119	176	254	341	407	438
85	79.6	126	199	299	397	460	479	447	374	272	174	104	63.9	105	166	251	343	412	442
90	63.4	113	191	294	394	459	478	447	373	269	166	91.1	47.9	91.3	157	247	340	409	438
95	75.6	123	202	308	411	478	498	465	389	283	178	101	57.1	101	168	259	355	426	457
100	90.3	127	203	308	414	485	506	475	395	286	183	108	72.0	108	172	264	361	433	465
105	102	126	195	289	391	465	488	458	379	275	179	110	84.8	111	171	255	347	418	448
110	116	128	188	262	346	414	438	410	342	253	174	113	99.6	114	168	238	317	379	406
115	132	134	182	240	303	352	371	351	298	230	169	119	113	118	166	223	284	333	353
120	144	147	177	225	270	305	316	301	264	215	165	130	126	129	165	211	259	296	313
125	154	155	172	214	251	277	285	273	244	205	162	140	137	136	162	203	243	273	287
130	162	162	171	204	235	257	264	253	229	196	161	146	145	139	159	194	228	254	266
135	167	164	178	192	220	238	244	236	214	185	167	149	152	149	163	185	214	236	246
140	170	166	179	186	203	219	224	217	198	179	169	152	157	152	168	175	200	219	227
145	171	165	178	188	191	200	204	198	186	181	170	151	160	153	165	178	185	201	207
150	172	162	175	185	191	194	193	192	187	179	169	150	162	151	161	178	185	189	191
155	167	160	172	181	186	191	191	189	183	175	166	147	159	150	160	170	182	188	190
160	153	152	168	175	181	183	183	181	177	171	154	127	141	134	145	164	174	182	185
165	137	147	161	170	173	175	175	174	169	149	129	111	121	122	117	134	158	172	177
170	123	130	142	154	164	168	167	161	132	121	109	104	103	104	104	110	120	141	164
175	132	131	134	145	141	141	129	108	112	117	117	121	118	118	121	114	113	108	116
180	138	137	131	130	113	82.2	49.3	89.5	121	129	136	138	137	137	135	132	127	121	77.5

C Range: 0 - 360DEG
 C Interval: 15.0DEG
 Test Speed: HIGH
 Temperature: 25.0DEG
 Operators: Alan Wang
 Test Date: 08 May 2023

γ Range: 0 - 180DEG
 γ Interval: 1.0DEG
 Test System: EVERFINE GO-R5000_V2 SYSTEM V2.00.416
 Humidity: 43.5%
 Test Distance: 2.500m [K=1.0390]
 Remarks:

LUMINOUS DISTRIBUTION INTENSITY DATA

Test:U:277.00V I:0.1517A P:33.360W PF:0.7941 Freq:60.00Hz Lamp Flux:2838.52x1 lm		
NAME:	TYPE:LED	WEIGHT:
SPEC.:	DIM.:	SERIAL No.:
MFR.: ASD Lighting corp	SUR.:	Shielding Angle:

Table--2

UNIT: cd

C(DEG) γ (DEG)	285	300	315	330	345														
0	148	148	148	147	148														
5	153	151	150	148	148														
10	164	161	158	153	149														
15	176	173	167	159	151														
20	190	184	176	166	155														
25	204	196	186	173	159														
30	217	208	196	180	162														
35	229	219	205	186	165														
40	240	229	213	191	168														
45	248	238	219	195	169														
50	255	244	224	198	168														
55	263	249	227	198	166														
60	273	255	229	196	161														
65	295	269	232	193	155														
70	338	296	242	192	149														
75	389	335	260	193	144														
80	419	360	273	192	135														
85	423	363	273	183	119														
90	420	359	266	174	105														
95	438	374	280	187	118														
100	445	379	283	192	124														
105	428	363	273	190	126														
110	388	331	256	186	129														
115	340	297	241	185	136														
120	304	273	230	182	148														
125	279	256	220	179	157														
130	260	241	210	174	163														
135	242	225	199	180	166														
140	224	208	188	182	167														
145	205	193	190	181	166														
150	193	191	188	179	164														
155	191	189	185	177	163														
160	186	184	181	174	160														
165	178	177	176	171	155														
170	169	169	165	154	141														
175	142	140	138	140	130														
180	86.6	96.4	125	130	133														

C Range: 0 - 360DEG
 C Interval: 15.0DEG
 Test Speed: HIGH
 Temperature: 25.0DEG
 Operators: Alan Wang
 Test Date: 08 May 2023

γ Range: 0 - 180DEG
 γ Interval: 1.0DEG
 Test System: EVERFINE GO-R5000_V2 SYSTEM V2.00.416
 Humidity: 43.5%
 Test Distance: 2.500m [K=1.0390]
 Remarks: