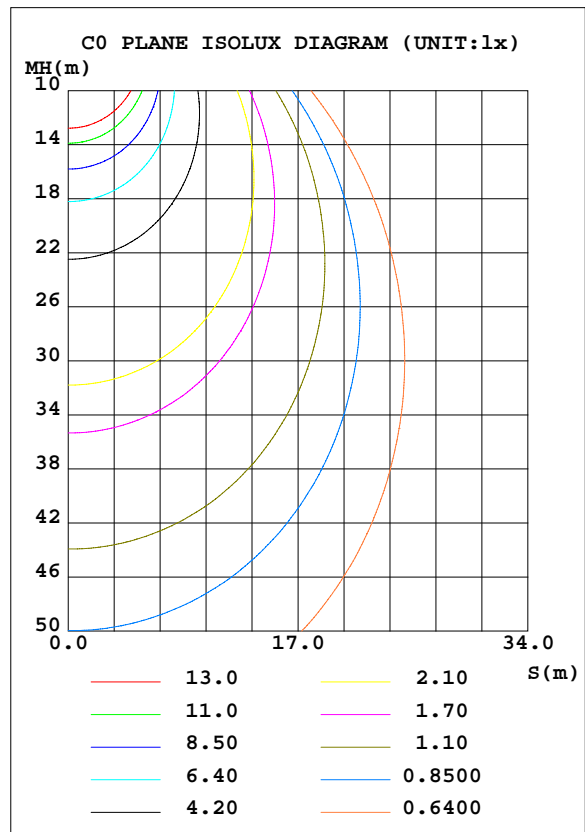
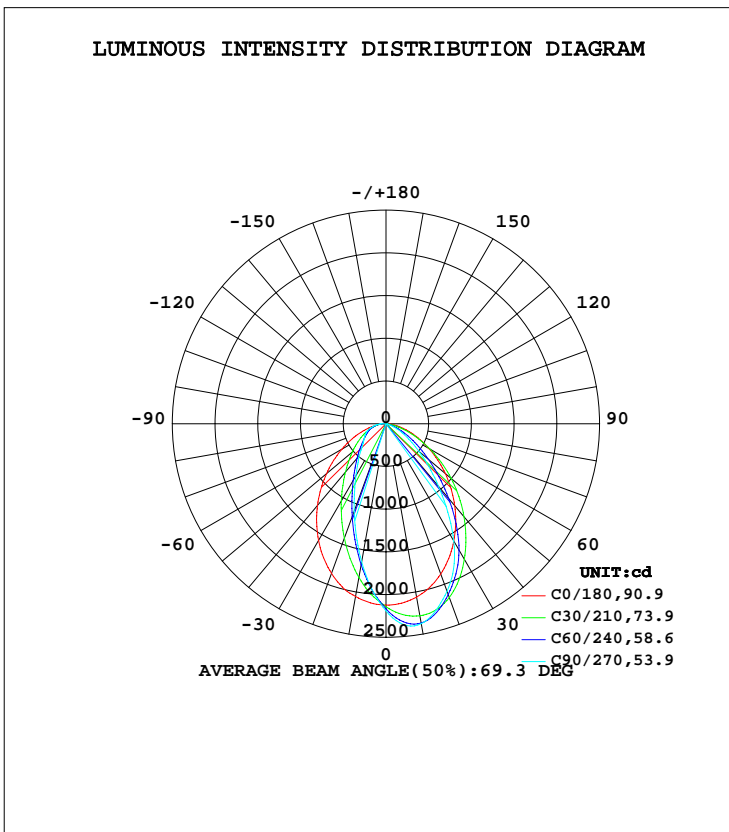


LUMINAIRE PHOTOMETRIC TEST REPORT

Test:U:120.00V I:0.2480A P:29.540W PF:0.9927 Freq:60.00Hz Lamp Flux:3772.13x1 lm		
NAME: ASD-WLP02A-30DAC-BK_5000K	TYPE: LED	WEIGHT:
SPEC.:	DIM.:	SERIAL No.:
MFR.: ASD Lighting Corp.	SUR.:	Shielding Angle:

DATA OF LAMP		PHOTOMETRIC DATA Eff: 127.70 lm/W			
MODEL	ASD-WLP02A-30DAC-BK	I _{max} (cd)	2389	S/MH(C0/180)	1.13
NOMINAL POWER(W)	30	LOR(%)	100.0	S/MH(C90/270)	0.61
RATED VOLTAGE(V)	120-277	TOTAL FLUX(lm)	3772.1	η UP, DN(C0-180)	0.0,58.6
NOMINAL FLUX(lm)	3772.13	CIE CLASS	DIRECT	η UP, DN(C180-360)	0.2,41.2
LAMPS INSIDE	1	η up(%)	0.2	CIBSE SHR NOM	1.00
TEST VOLTAGE(V)	120	η down(%)	99.8	CIBSE SHR MAX	1.05



C Range: 0 - 360DEG
 C Interval: 15.0DEG
 Test Speed: HIGH
 Temperature: 25.0DEG
 Operators: Alan Wang
 Test Date: 24 March 2022

γ Range: 0 - 180DEG
 γ Interval: 1.0DEG
 Test System: EVERFINE GO-R5000_V2 SYSTEM V2.00.416
 Humidity: 44.6%
 Test Distance: 2.500m [K=1.0477]
 Remarks:

ZONAL FLUX DIAGRAM

ZONAL FLUX DIAGRAM:

γ	C0	C45	C90	C135	C180	C225	C270	C315	γ	Φ zone	Φ total	%lum,lamp
10	2060	2343	2376	2350	2054	1737	1641	1827	0- 10	202.3	202.3	5.36,5.36
20	1873	2164	2087	2139	1865	1267	1090	1356	10- 20	535.8	738.2	19.6,19.6
30	1587	1784	1587	1763	1580	873.8	705.9	943.1	20- 30	712.9	1451	38.5,38.5
40	1252	1318	961.3	1307	1249	603.2	485.7	646.3	30- 40	727.5	2179	57.8,57.8
50	907.5	832.2	506.1	836.5	909.3	424.1	350.0	448.3	40- 50	622.1	2801	74.2,74.2
60	581.6	442.3	233.1	452.2	596.7	292.8	285.9	308.5	50- 60	464.2	3265	86.6,86.6
70	314.6	177.6	67.93	182.6	335.4	197.6	221.7	202.7	60- 70	300.0	3565	94.5,94.5
80	114.5	13.48	0.0976	13.90	136.6	114.2	136.3	115.7	70- 80	150.7	3715	98.5,98.5
90	0.7564	0.1062	0.1065	0.1037	4.888	34.83	49.21	34.59	80- 90	47.50	3763	99.8,99.8
100	0.1966	0.1503	0.1459	0.1534	0.3796	0.2900	0.2107	0.3050	90-100	5.109	3768	99.9,99.9
110	0.2767	0.1955	0.1888	0.2209	0.5000	0.4352	0.2745	0.4547	100-110	0.2896	3768	99.9,99.9
120	0.4157	0.2662	0.2477	0.3312	0.6582	0.6790	0.5058	0.6726	110-120	0.3822	3769	99.9,99.9
130	0.6125	0.4038	0.3484	0.4978	0.9996	1.150	1.014	1.097	120-130	0.5449	3769	99.9,99.9
140	0.8213	0.6255	0.5492	0.7265	1.256	1.584	1.583	1.513	130-140	0.7160	3770	99.9,99.9
150	0.9993	0.9396	0.8517	0.9655	1.533	1.857	2.053	1.839	140-150	0.7731	3771	100,100
160	1.270	1.271	1.164	1.238	1.817	1.969	2.184	2.028	150-160	0.6940	3772	100,100
170	1.441	1.536	1.414	1.377	1.916	1.880	1.919	1.855	160-170	0.4724	3772	100,100
180	1.800	1.762	1.634	1.575	1.802	1.788	1.656	1.586	170-180	0.1575	3772	100,100
DEG	LUMINOUS INTENSITY:cd									UNIT:lm		

Conical surface Flux(90deg): 2507.5 lm

%lum = 66.5%
 %lamp = 66.5%

Conical surface Flux(120deg): 3264.8 lm

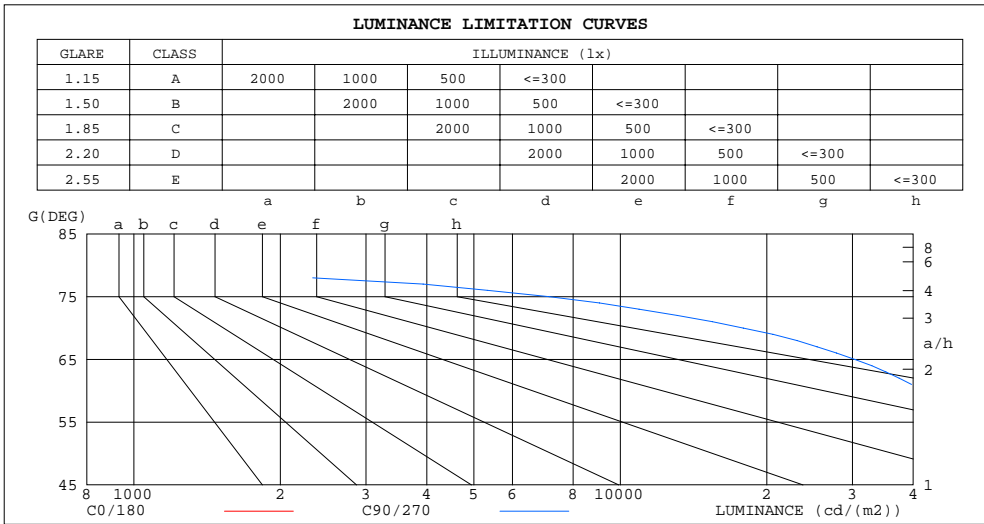
%lum = 86.6%
 %lamp = 86.6%

C Range: 0 - 360DEG
 C Interval: 15.0DEG
 Test Speed: HIGH
 Temperature: 25.0DEG
 Operators: Alan Wang
 Test Date: 24 March 2022

γ Range: 0 - 180DEG
 γ Interval: 1.0DEG
 Test System: EVERFINE GO-R5000_V2 SYSTEM V2.00.416
 Humidity: 44.6%
 Test Distance: 2.500m [K=1.0477]
 Remarks:

LUMINANCE LIMITATION CURVES

Test:U:120.00V I:0.2480A P:29.540W PF:0.9927 Freq:60.00Hz Lamp Flux:3772.13x1 lm		
NAME: ASD-WLP02A-30DAC-BK_5000K	TYPE: LED	WEIGHT:
SPEC.:	DIM.:	SERIAL No.:
MFR.: ASD Lighting Corp.	SUR.:	Shielding Angle:



LUMINANCE cd/(m2)		
G(DEG)	C0/180	C90/270
85	41084	92
80	59428	51
75	71737	7155
70	82871	17894
65	93719	30342
60	104797	42002
55	116049	54804
50	127187	70930
45	137346	90532

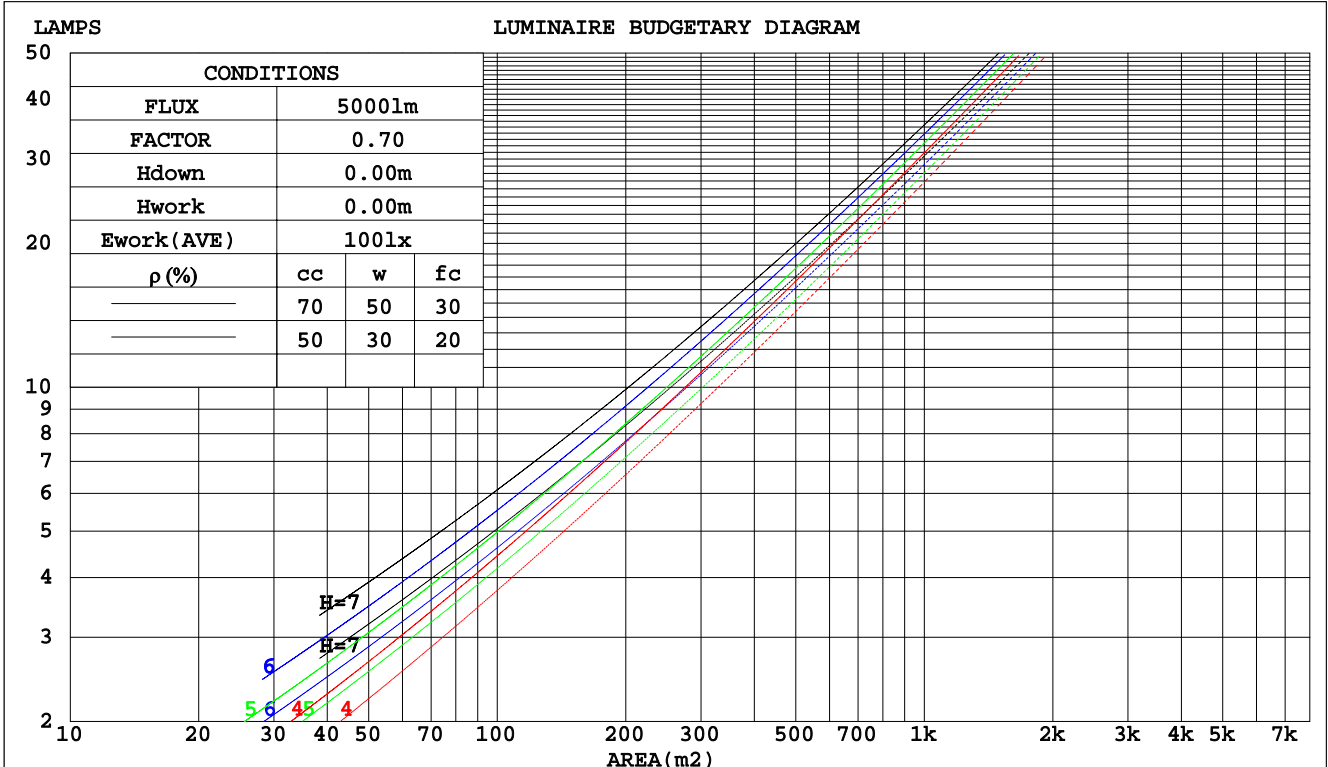
C Range: 0 - 360DEG
 C Interval: 15.0DEG
 Test Speed: HIGH
 Temperature: 25.0DEG
 Operators: Alan Wang
 Test Date: 24 March 2022

γ Range: 0 - 180DEG
 γ Interval: 1.0DEG
 Test System: EVERFINE GO-R5000_V2 SYSTEM V2.00.416
 Humidity: 44.6%
 Test Distance: 2.500m [K=1.0477]
 Remarks:

CU AND LUMINAIRE BUDGETARY ESTIMATE DIAGRAM

Test:U:120.00V I:0.2480A P:29.540W PF:0.9927 Freq:60.00Hz Lamp Flux:3772.13x1 lm		
NAME: ASD-WLP02A-30DAC-BK_5000K	TYPE: LED	WEIGHT:
SPEC.:	DIM.:	SERIAL No.:
MFR.: ASD Lighting Corp.	SUR.:	Shielding Angle:

pcc	80%			70%			50%			30%			10%			0
	50%	30%	10%	50%	30%	10%	50%	30%	10%	50%	30%	10%	50%	30%	10%	0
pw																
pfc	20%			20%			20%			20%			20%			0
RCR	RCR:Room Cavity Ratio															
	Coefficients of Utilization(CU)															
0.0	1.19	1.19	1.19	1.16	1.16	1.16	1.11	1.11	1.11	1.06	1.06	1.06	1.02	1.02	1.02	.00
1.0	1.06	1.02	.99	1.04	1.01	.97	.90	.97	.94	.96	.94	.91	.92	.90	.89	.87
2.0	.94	.89	.84	.93	.87	.83	.89	.85	.81	.86	.82	.79	.83	.80	.77	.75
3.0	.85	.77	.72	.83	.76	.71	.80	.74	.70	.77	.73	.69	.75	.71	.67	.65
4.0	.76	.68	.62	.75	.68	.62	.72	.66	.61	.70	.65	.60	.68	.63	.59	.58
5.0	.69	.61	.55	.68	.60	.55	.66	.59	.54	.64	.58	.54	.62	.57	.53	.51
6.0	.63	.55	.49	.62	.54	.49	.60	.54	.48	.59	.53	.48	.57	.52	.48	.46
7.0	.58	.50	.44	.57	.49	.44	.55	.49	.44	.54	.48	.43	.53	.47	.43	.41
8.0	.53	.45	.40	.53	.45	.40	.51	.45	.40	.50	.44	.39	.49	.43	.39	.37
9.0	.49	.42	.37	.49	.41	.37	.48	.41	.36	.47	.40	.36	.46	.40	.36	.34
10.0	.46	.39	.34	.45	.38	.34	.44	.38	.33	.43	.37	.33	.43	.37	.33	.32



C Range: 0 - 360DEG
 C Interval: 15.0DEG
 Test Speed: HIGH
 Temperature: 25.0DEG
 Operators: Alan Wang
 Test Date: 24 March 2022

γ Range: 0 - 180DEG
 γ Interval: 1.0DEG
 Test System: EVERFINE GO-R5000_V2 SYSTEM V2.00.416
 Humidity: 44.6%
 Test Distance: 2.500m [K=1.0477]
 Remarks:

WEC AND CCEC

Test:U:120.00V I:0.2480A P:29.540W PF:0.9927 Freq:60.00Hz Lamp Flux:3772.13x1 lm		
NAME: ASD-WLP02A-30DAC-BK_5000K	TYPE: LED	WEIGHT:
SPEC.:	DIM.:	SERIAL No.:
MFR.: ASD Lighting Corp.	SUR.:	Shielding Angle:

ρcc	80%			70%			50%			30%			10%			0
ρw	50%	30%	10%	50%	30%	10%	50%	30%	10%	50%	30%	10%	50%	30%	10%	0
ρfc	20%			20%			20%			20%			20%			0
RCR	RCR:Room Cavity Ratio						Wall Exitance Coefficients(WEC)									
0.0																
1.0	.266	.151	.048	.259	.148	.047	.246	.141	.045	.233	.135	.043	.222	.129	.042	
2.0	.252	.138	.042	.246	.136	.042	.235	.131	.041	.224	.126	.039	.214	.121	.038	
3.0	.236	.126	.038	.231	.124	.037	.221	.120	.036	.212	.116	.036	.203	.112	.035	
4.0	.220	.115	.034	.216	.113	.033	.207	.110	.033	.199	.107	.032	.191	.104	.032	
5.0	.206	.105	.030	.202	.103	.030	.194	.101	.030	.186	.098	.029	.180	.096	.029	
6.0	.192	.096	.028	.189	.095	.027	.182	.093	.027	.175	.091	.027	.169	.089	.026	
7.0	.180	.089	.025	.177	.088	.025	.171	.086	.025	.165	.085	.025	.160	.083	.024	
8.0	.170	.083	.023	.167	.082	.023	.161	.081	.023	.156	.079	.023	.151	.078	.023	
9.0	.160	.077	.022	.157	.077	.022	.152	.075	.021	.148	.074	.021	.143	.073	.021	
10.0	.151	.073	.020	.149	.072	.020	.144	.071	.020	.140	.070	.020	.136	.068	.020	

ρcc	80%			70%			50%			30%			10%			0
ρw	50%	30%	10%	50%	30%	10%	50%	30%	10%	50%	30%	10%	50%	30%	10%	0
ρfc	20%			20%			20%			20%			20%			0
RCR	RCR:Room Cavity Ratio						Ceiling Cavity Exitance Coefficients(CCEC)									
0.0	.192	.192	.192	.164	.164	.164	.112	.112	.112	.064	.064	.064	.021	.021	.021	
1.0	.179	.158	.140	.153	.136	.120	.105	.094	.083	.060	.054	.048	.019	.017	.016	
2.0	.169	.134	.105	.145	.115	.090	.099	.080	.063	.057	.046	.037	.018	.015	.012	
3.0	.160	.116	.081	.137	.100	.070	.094	.069	.049	.054	.041	.029	.017	.013	.010	
4.0	.152	.102	.064	.130	.088	.056	.089	.062	.039	.052	.036	.023	.017	.012	.008	
5.0	.144	.092	.053	.124	.079	.046	.085	.055	.032	.049	.032	.019	.016	.011	.006	
6.0	.137	.083	.044	.118	.072	.038	.081	.050	.027	.047	.030	.016	.015	.010	.005	
7.0	.130	.076	.038	.112	.066	.033	.077	.046	.023	.045	.027	.014	.015	.009	.005	
8.0	.124	.070	.033	.107	.061	.028	.074	.043	.020	.043	.025	.012	.014	.008	.004	
9.0	.119	.065	.029	.102	.056	.025	.071	.040	.018	.041	.023	.011	.013	.008	.004	
10.0	.113	.061	.026	.098	.053	.022	.068	.037	.016	.040	.022	.010	.013	.007	.003	

C Range: 0 - 360DEG
 C Interval: 15.0DEG
 Test Speed: HIGH
 Temperature: 25.0DEG
 Operators: Alan Wang
 Test Date: 24 March 2022

γ Range: 0 - 180DEG
 γ Interval: 1.0DEG
 Test System: EVERFINE GO-R5000_V2 SYSTEM V2.00.416
 Humidity: 44.6%
 Test Distance: 2.500m [K=1.0477]
 Remarks:

UGR(Unified Glare Rating) Table

Test:U:120.00V I:0.2480A P:29.540W PF:0.9927 Freq:60.00Hz Lamp Flux:3772.13x1 lm										
NAME: ASD-WLP02A-30DAC-BK_5000K					TYPE: LED			WEIGHT:		
SPEC.:					DIM.:			SERIAL No.:		
MFR.: ASD Lighting Corp.					SUR.:			Shielding Angle:		
ceiling/cavity	0.7	0.7	0.5	0.5	0.3	0.7	0.7	0.5	0.5	0.3
walls	0.5	0.3	0.5	0.3	0.3	0.5	0.3	0.5	0.3	0.3
working plane	0.2	0.2	0.2	0.2	0.2	0.2	0.2	0.2	0.2	0.2
Room dimensions	Viewed crosswise					Viewed endwise				
x = 2H y = 2H	29.8	31.2	30.1	31.6	31.9	23.9	25.4	24.3	25.7	26.0
3H	31.1	32.4	31.5	32.7	33.1	24.3	25.6	24.7	26.0	26.3
4H	31.5	32.7	31.9	33.1	33.5	24.3	25.5	24.7	25.9	26.3
6H	31.7	32.9	32.1	33.2	33.6	24.2	25.3	24.6	25.7	26.1
8H	31.8	32.9	32.2	33.3	33.7	24.2	25.3	24.6	25.6	26.1
12H	31.8	32.8	32.2	33.2	33.6	24.1	25.2	24.6	25.6	26.0
4H 2H	29.8	31.1	30.2	31.4	31.8	25.0	26.2	25.4	26.6	27.0
3H	31.3	32.3	31.7	32.7	33.1	25.5	26.5	25.9	26.9	27.3
4H	31.8	32.7	32.3	33.2	33.6	25.4	26.3	25.9	26.8	27.2
6H	32.2	33.0	32.6	33.4	33.9	25.4	26.2	25.8	26.6	27.1
8H	32.2	33.0	32.7	33.4	33.9	25.3	26.1	25.8	26.5	27.0
12H	32.3	32.9	32.7	33.4	33.9	25.3	25.9	25.8	26.4	26.9
8H 4H	31.7	32.5	32.2	32.9	33.4	25.8	26.5	26.3	27.0	27.5
6H	32.1	32.7	32.6	33.2	33.7	25.7	26.3	26.2	26.8	27.3
8H	32.2	32.7	32.7	33.3	33.7	25.7	26.2	26.2	26.7	27.2
12H	32.2	32.7	32.7	33.2	33.8	25.6	26.1	26.2	26.6	27.2
12H 4H	31.7	32.4	32.2	32.9	33.3	25.8	26.5	26.3	27.0	27.5
6H	32.1	32.6	32.6	33.1	33.6	25.7	26.3	26.3	26.8	27.3
8H	32.2	32.6	32.7	33.1	33.7	25.7	26.2	26.2	26.7	27.3
CIE190: 2010										

CIE190: 2010
Area: 0.0111 m2

C Range: 0 - 360DEG
C Interval: 15.0DEG
Test Speed: HIGH
Temperature: 25.0DEG
Operators: Alan Wang
Test Date: 24 March 2022

γ Range: 0 - 180DEG
γ Interval: 1.0DEG
Test System: EVERFINE GO-R5000_V2 SYSTEM V2.00.416
Humidity: 44.6%
Test Distance: 2.500m [K=1.0477]
Remarks:

UTILIZATION FACTORS TABLE

Test:U:120.00V I:0.2480A P:29.540W PF:0.9927 Freq:60.00Hz Lamp Flux:3772.13x1 lm		
NAME: ASD-WLP02A-30DAC-BK_5000K	TYPE: LED	WEIGHT:
SPEC.:	DIM.:	SERIAL No.:
MFR.: ASD Lighting Corp.	SUR.:	Shielding Angle:

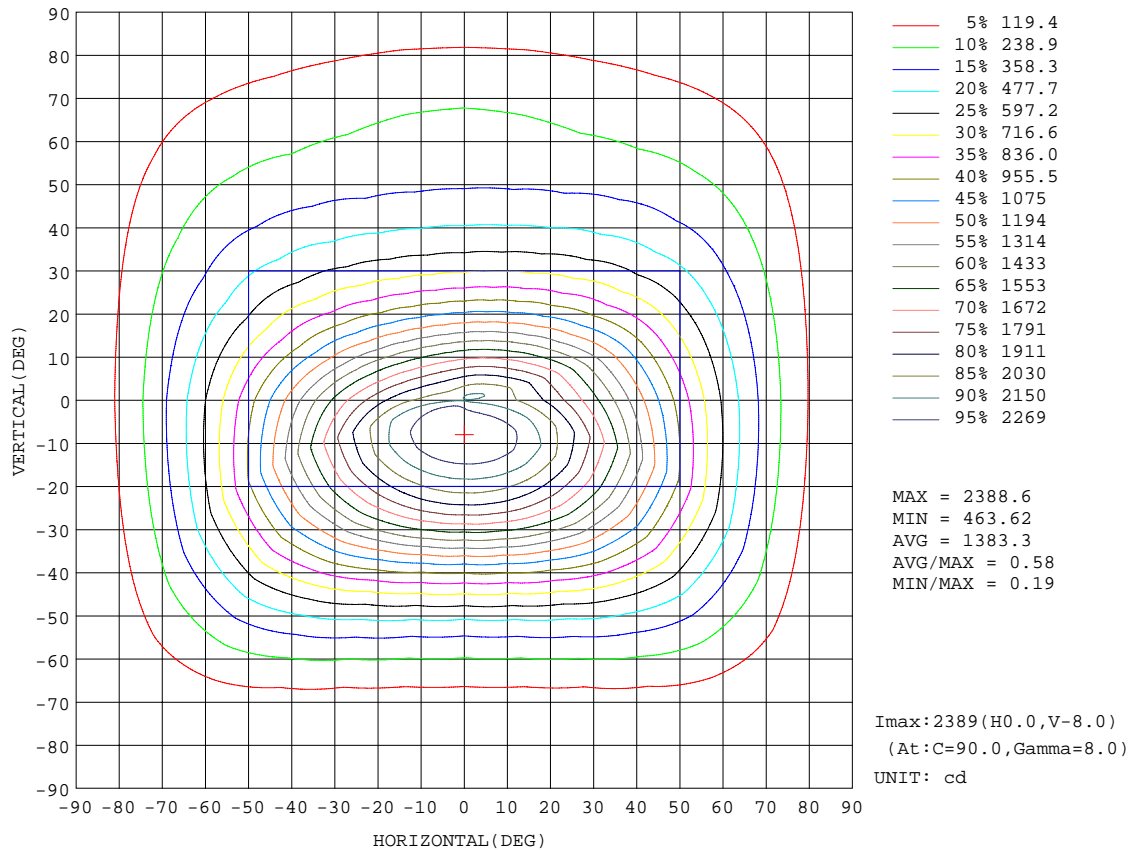
REFLECTANCE										
Ceiling	0.8	0.8	0.8	0.7	0.7	0.7	0.5	0.5	0.5	0
Walls	0.7	0.5	0.3	0.7	0.5	0.3	0.7	0.5	0.3	0
Working plane	0.2	0.2	0.2	0.2	0.2	0.2	0.2	0.2	0.2	0
ROOM INDEX	UTILIZATION FACTORS(PERCENT) $k(RI) \times RCR = 5$									
k = 0.60	65	55	49	65	55	49	63	54	49	43
0.80	75	65	59	74	64	58	72	64	58	52
1.00	83	73	67	82	73	67	79	73	66	60
1.25	89	80	74	88	79	74	85	78	73	66
1.50	93	85	79	92	84	79	89	83	78	71
2.00	99	92	87	97	91	86	94	89	84	77
2.50	102	96	91	100	94	90	97	92	88	80
3.00	105	99	95	103	98	94	99	95	91	84
4.00	108	104	100	106	102	98	102	99	96	87
5.00	110	106	103	108	104	101	104	101	98	90
ROOM INDEX	UF(total)									Direct
According to DIN EN 13032-2 2004			Suspended				SHRNOM = 1.25			

C Range: 0 - 360DEG
 C Interval: 15.0DEG
 Test Speed: HIGH
 Temperature: 25.0DEG
 Operators: Alan Wang
 Test Date: 24 March 2022

γ Range: 0 - 180DEG
 γ Interval: 1.0DEG
 Test System: EVERFINE GO-R5000_V2 SYSTEM V2.00.416
 Humidity: 44.6%
 Test Distance: 2.500m [K=1.0477]
 Remarks:

ISOCANDELA DIAGRAM

Test:U:120.00V I:0.2480A P:29.540W PF:0.9927 Freq:60.00Hz Lamp Flux:3772.13x1 lm		
NAME: ASD-WLP02A-30DAC-BK_5000K	TYPE: LED	WEIGHT:
SPEC.:	DIM.:	SERIAL No.:
MFR.: ASD Lighting Corp.	SUR.:	Shielding Angle:

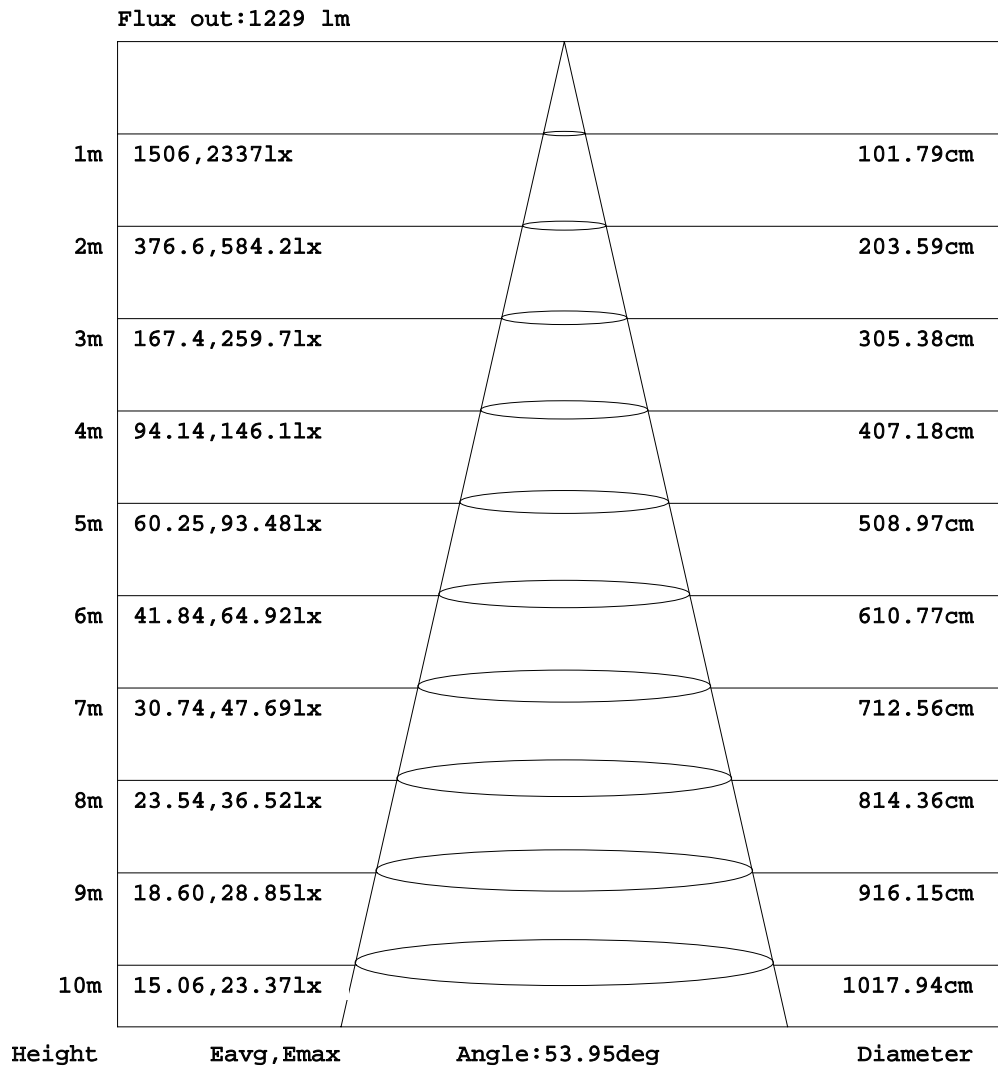


C Range: 0 - 360DEG
 C Interval: 15.0DEG
 Test Speed: HIGH
 Temperature: 25.0DEG
 Operators: Alan Wang
 Test Date: 24 March 2022

γ Range: 0 - 180DEG
 γ Interval: 1.0DEG
 Test System: EVERFINE GO-R5000_V2 SYSTEM V2.00.416
 Humidity: 44.6%
 Test Distance: 2.500m [K=1.0477]
 Remarks:

AAI Figure

Test:U:120.00V I:0.2480A P:29.540W PF:0.9927 Freq:60.00Hz Lamp Flux:3772.13x1 lm		
NAME: ASD-WLP02A-30DAC-BK_5000K	TYPE: LED	WEIGHT:
SPEC.:	DIM.:	SERIAL No.:
MFR.: ASD Lighting Corp.	SUR.:	Shielding Angle:



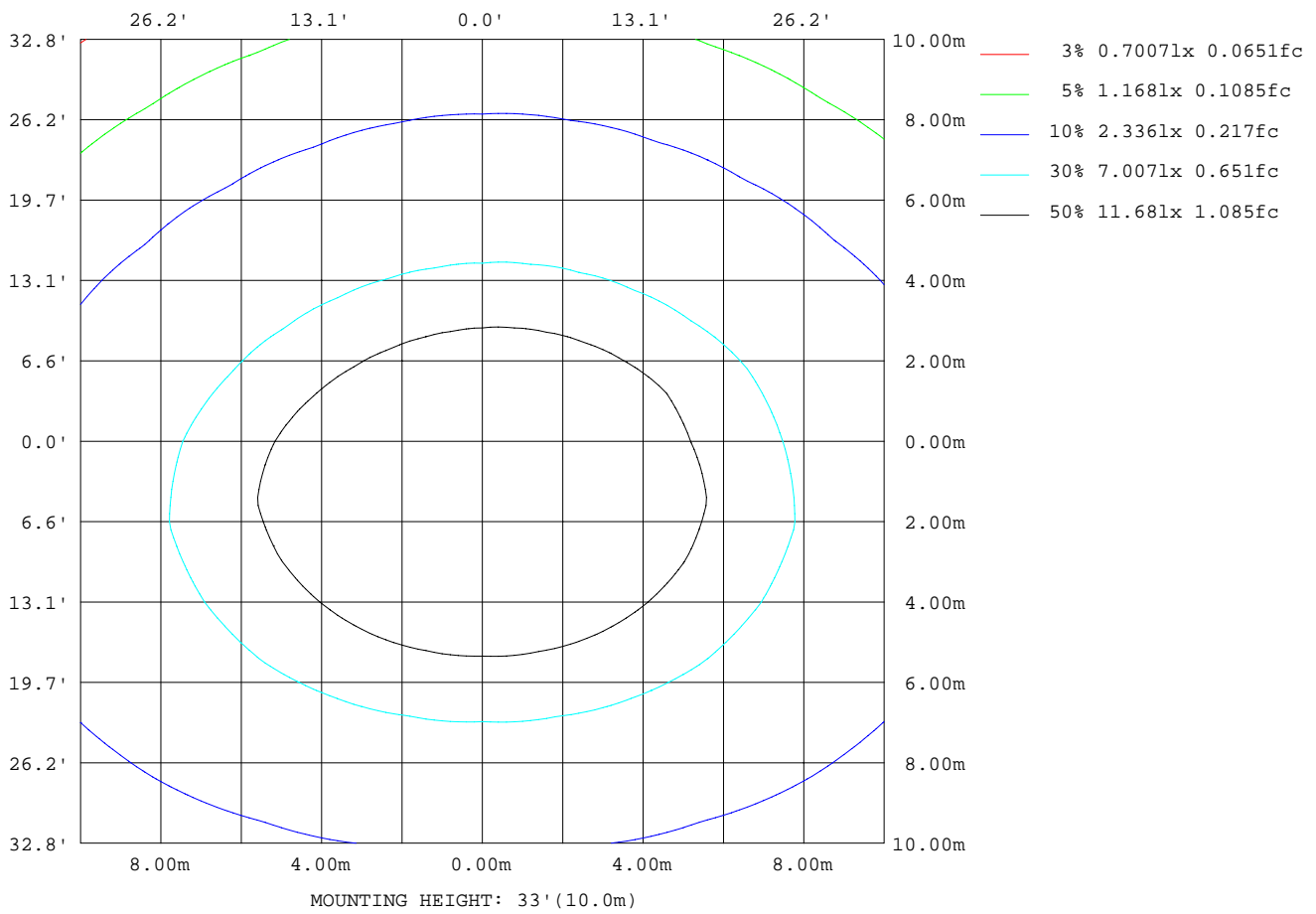
Note:The Curves indicate the illuminated area and the average illumination when the luminaire is at different distance.

C Range: 0 - 360DEG
 C Interval: 15.0DEG
 Test Speed: HIGH
 Temperature: 25.0DEG
 Operators:Alan Wang
 Test Date:24 March 2022

γ Range: 0 - 180DEG
 γ Interval: 1.0DEG
 Test System:EVERFINE GO-R5000_V2 SYSTEM V2.00.416
 Humidity: 44.6%
 Test Distance:2.500m [K=1.0477]
 Remarks:

ISOLUX DIAGRAM

Test:U:120.00V I:0.2480A P:29.540W PF:0.9927 Freq:60.00Hz Lamp Flux:3772.13x1 lm		
NAME: ASD-WLP02A-30DAC-BK_5000K	TYPE: LED	WEIGHT:
SPEC.:	DIM.:	SERIAL No.:
MFR.: ASD Lighting Corp.	SUR.:	Shielding Angle:



C Range: 0 - 360DEG
 C Interval: 15.0DEG
 Test Speed: HIGH
 Temperature: 25.0DEG
 Operators: Alan Wang
 Test Date: 24 March 2022

γ Range: 0 - 180DEG
 γ Interval: 1.0DEG
 Test System: EVERFINE GO-R5000_V2 SYSTEM V2.00.416
 Humidity: 44.6%
 Test Distance: 2.500m [K=1.0477]
 Remarks:

LED Avg.L Report

Test:U:120.00V I:0.2480A P:29.540W PF:0.9927 Freq:60.00Hz Lamp Flux:3772.13x1 lm		
NAME: ASD-WLP02A-30DAC-BK_5000K	TYPE: LED	WEIGHT:
SPEC.:	DIM.:	SERIAL No.:
MFR.: ASD Lighting Corp.	SUR.:	Shielding Angle:

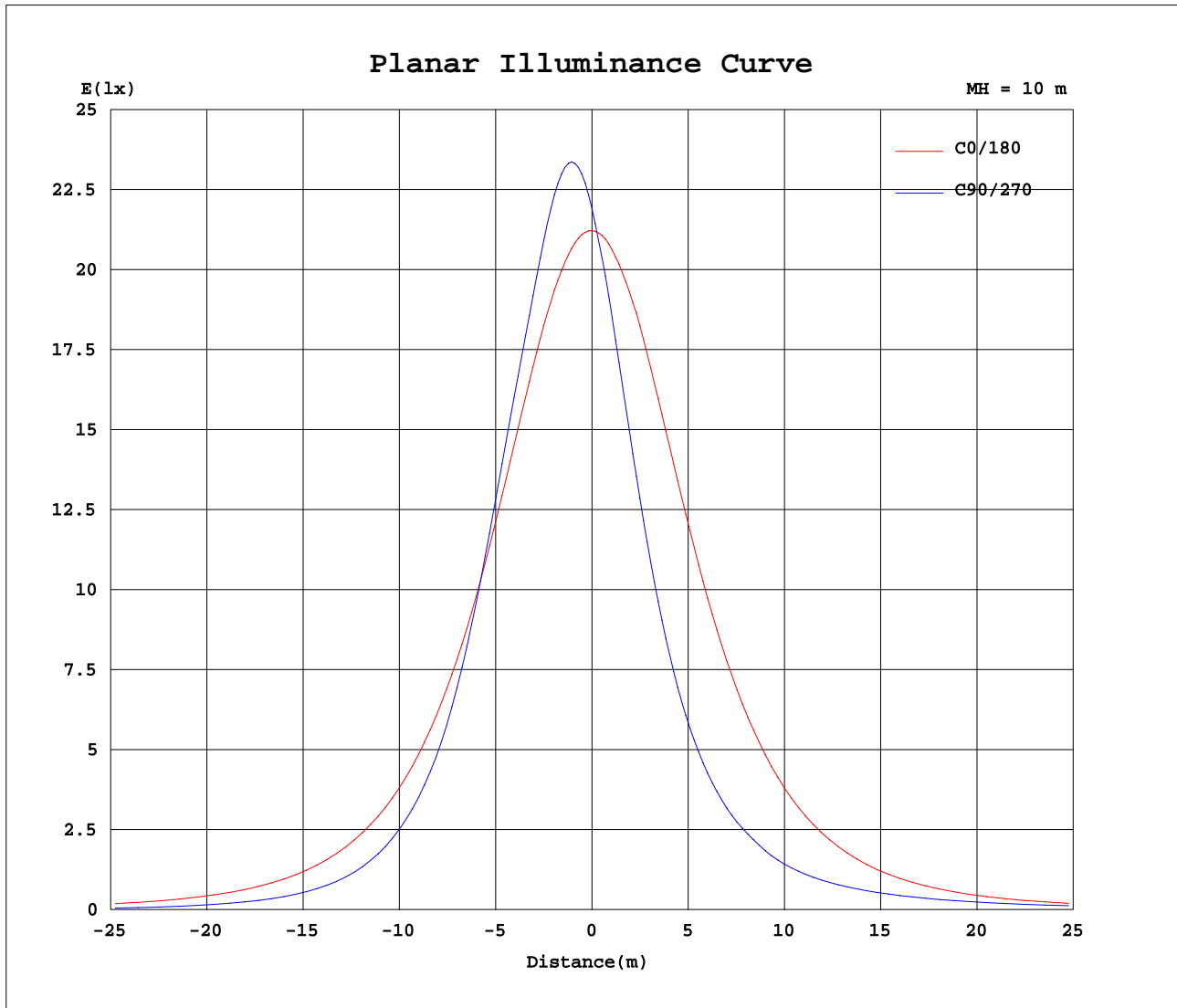
AvgL	cd/m2
L_0~180(65)av	95651
L_0~180(75)av	75652
L_0~180(85)av	52183
L_90~270(65)av	42559
L_90~270(75)av	35126
L_90~270(85)av	47146
L_45(65)av	58469
L_45(75)av	41500
L_45(85)av	38150

Standard: GB/T 29293-2012

C Range: 0 - 360DEG
 C Interval: 15.0DEG
 Test Speed: HIGH
 Temperature: 25.0DEG
 Operators: Alan Wang
 Test Date: 24 March 2022

γ Range: 0 - 180DEG
 γ Interval: 1.0DEG
 Test System: EVERFINE GO-R5000_V2 SYSTEM V2.00.416
 Humidity: 44.6%
 Test Distance: 2.500m [K=1.0477]
 Remarks:

Planar Illuminance Curve



C Range: 0 - 360DEG
 C Interval: 15.0DEG
 Test Speed: HIGH
 Temperature: 25.0DEG
 Operators: Alan Wang
 Test Date: 24 March 2022

γ Range: 0 - 180DEG
 γ Interval: 1.0DEG
 Test System: EVERFINE GO-R5000_V2 SYSTEM V2.00.416
 Humidity: 44.6%
 Test Distance: 2.500m [K=1.0477]
 Remarks:

LUMINOUS DISTRIBUTION INTENSITY DATA

Test:U:120.00V I:0.2480A P:29.540W PF:0.9927 Freq:60.00Hz Lamp Flux:3772.13x1 lm		
NAME: ASD-WLP02A-30DAC-BK_5000K	TYPE: LED	WEIGHT:
SPEC.:	DIM.:	SERIAL No.:
MFR.: ASD Lighting Corp.	SUR.:	Shielding Angle:

Table--1

UNIT: cd

C(DEG) γ (DEG)	0	15	30	45	60	75	90	105	120	135	150	165	180	195	210	225	240	255	270
0	2122	2129	2141	2154	2166	2179	2191	2202	2209	2215	2222	2228	2122	2129	2141	2154	2166	2179	2191
5	2108	2177	2241	2293	2327	2349	2359	2359	2348	2328	2297	2258	2104	2048	2006	1968	1942	1930	1939
10	2060	2184	2283	2343	2369	2376	2376	2374	2367	2350	2312	2247	2054	1937	1826	1737	1675	1641	1641
15	1982	2149	2257	2294	2288	2271	2261	2263	2273	2280	2261	2190	1978	1792	1629	1497	1405	1355	1350
20	1873	2072	2166	2164	2128	2100	2087	2091	2110	2139	2153	2096	1865	1631	1426	1267	1157	1097	1090
25	1740	1954	2018	1984	1938	1897	1872	1885	1919	1959	1999	1965	1730	1464	1229	1056	942	882	873
30	1587	1803	1833	1784	1710	1627	1587	1617	1691	1763	1815	1809	1580	1289	1046	874	770	716	706
35	1424	1629	1631	1562	1433	1313	1263	1305	1419	1543	1617	1632	1414	1118	881	724	633	587	578
40	1252	1439	1421	1318	1141	1008	961	996	1134	1307	1413	1442	1249	957	739	603	525	493	486
45	1078	1241	1208	1066	878	754	711	751	877	1063	1206	1249	1075	809	618	504	443	409	403
50	907	1040	996	832	650	543	506	543	652	836	998	1052	909	672	515	424	369	352	350
55	739	846	789	620	466	377	349	377	470	629	802	862	748	550	426	354	316	313	314
60	582	660	595	442	318	252	233	253	323	452	610	676	597	442	350	293	275	281	286
65	440	490	423	297	202	156	142	156	205	305	438	506	458	346	282	243	239	252	257
70	315	340	276	178	108	78.2	67.9	77.6	109	183	288	354	335	262	222	198	202	216	222
75	206	211	153	79.6	38.1	24.6	20.6	23.8	38.0	83.1	161	223	229	187	166	156	163	176	181
80	115	101	47.9	13.5	4.65	0.28	0.10	0.19	4.39	13.9	55.1	113	137	122	116	114	122	133	136
85	39.7	12.4	0.74	0.11	0.09	0.09	0.09	0.09	0.09	0.10	0.93	21.9	61.2	65.6	70.1	73.4	80.2	88.5	91.1
90	0.76	0.15	0.11	0.11	0.10	0.10	0.11	0.11	0.10	0.10	0.11	0.19	4.89	18.2	28.0	34.8	41.5	47.1	49.2
95	0.16	0.15	0.13	0.13	0.12	0.12	0.12	0.13	0.12	0.13	0.13	0.14	0.30	0.30	0.38	3.37	8.44	11.5	12.8
100	0.20	0.18	0.16	0.15	0.15	0.15	0.15	0.15	0.15	0.15	0.16	0.17	0.38	0.39	0.36	0.29	0.23	0.20	0.21
105	0.23	0.21	0.18	0.17	0.17	0.17	0.17	0.17	0.18	0.19	0.20	0.21	0.45	0.47	0.44	0.37	0.29	0.24	0.22
110	0.28	0.25	0.21	0.20	0.19	0.19	0.19	0.20	0.20	0.22	0.24	0.26	0.50	0.52	0.50	0.44	0.35	0.29	0.27
115	0.33	0.30	0.25	0.23	0.21	0.21	0.21	0.23	0.24	0.27	0.30	0.33	0.56	0.59	0.58	0.53	0.45	0.38	0.36
120	0.42	0.37	0.30	0.27	0.25	0.24	0.25	0.26	0.29	0.33	0.38	0.41	0.66	0.70	0.71	0.68	0.61	0.53	0.51
125	0.51	0.45	0.37	0.33	0.30	0.29	0.29	0.31	0.35	0.40	0.47	0.50	0.83	0.88	0.90	0.90	0.83	0.75	0.73
130	0.61	0.54	0.46	0.40	0.37	0.34	0.35	0.37	0.43	0.50	0.56	0.61	1.00	1.07	1.12	1.15	1.11	1.05	1.01
135	0.72	0.66	0.58	0.50	0.47	0.43	0.44	0.47	0.53	0.61	0.69	0.72	1.15	1.23	1.32	1.38	1.36	1.34	1.32
140	0.82	0.78	0.71	0.63	0.58	0.54	0.55	0.58	0.65	0.73	0.78	0.83	1.26	1.36	1.46	1.58	1.60	1.61	1.58
145	0.93	0.91	0.84	0.78	0.72	0.70	0.69	0.73	0.78	0.85	0.88	0.92	1.42	1.50	1.60	1.76	1.82	1.87	1.85
150	1.00	1.03	0.99	0.94	0.90	0.86	0.85	0.89	0.93	0.97	0.96	0.96	1.53	1.58	1.68	1.86	1.98	2.07	2.05
155	1.12	1.19	1.18	1.12	1.09	1.06	1.04	1.09	1.11	1.11	1.11	1.05	1.66	1.65	1.79	1.91	2.06	2.18	2.15
160	1.27	1.33	1.32	1.27	1.22	1.20	1.16	1.25	1.24	1.24	1.21	1.15	1.82	1.81	1.84	1.97	2.05	2.18	2.18
165	1.36	1.44	1.47	1.45	1.40	1.36	1.34	1.40	1.40	1.39	1.33	1.25	1.87	1.87	1.87	1.95	2.04	2.09	2.14
170	1.44	1.51	1.54	1.54	1.47	1.44	1.41	1.46	1.44	1.38	1.33	1.30	1.92	1.91	1.89	1.88	1.90	1.94	1.92
175	1.58	1.64	1.65	1.63	1.57	1.53	1.49	1.50	1.50	1.47	1.43	1.44	1.87	1.87	1.87	1.83	1.79	1.78	1.75
180	1.80	1.85	1.80	1.76	1.71	1.66	1.63	1.55	1.56	1.58	1.58	1.63	1.80	1.80	1.83	1.79	1.75	1.70	1.66

C Range: 0 - 360DEG
 C Interval: 15.0DEG
 Test Speed: HIGH
 Temperature: 25.0DEG
 Operators: Alan Wang
 Test Date: 24 March 2022

γ Range: 0 - 180DEG
 γ Interval: 1.0DEG
 Test System: EVERFINE GO-R5000_V2 SYSTEM V2.00.416
 Humidity: 44.6%
 Test Distance: 2.500m [K=1.0477]
 Remarks:

LUMINOUS DISTRIBUTION INTENSITY DATA

Test:U:120.00V I:0.2480A P:29.540W PF:0.9927 Freq:60.00Hz Lamp Flux:3772.13x1 lm		
NAME: ASD-WLP02A-30DAC-BK_5000K	TYPE: LED	WEIGHT:
SPEC.:	DIM.:	SERIAL No.:
MFR.: ASD Lighting Corp.	SUR.:	Shielding Angle:

Table--2

UNIT: cd

C(DEG) γ (DEG)	285	300	315	330	345														
0	2202	2209	2215	2222	2228														
5	1962	1998	2041	2095	2157														
10	1675	1737	1827	1938	2056														
15	1389	1469	1590	1749	1926														
20	1129	1216	1356	1544	1766														
25	909	995	1137	1337	1591														
30	737	810	943	1144	1408														
35	603	664	779	968	1225														
40	503	551	646	808	1050														
45	419	462	538	672	883														
50	357	385	448	554	730														
55	314	325	374	454	591														
60	281	279	308	369	468														
65	250	240	252	294	360														
70	215	202	203	228	267														
75	176	163	158	168	186														
80	133	122	116	115	117														
85	88.7	81.1	74.1	68.0	58.8														
90	47.6	42.0	34.6	25.2	10.5														
95	11.9	8.73	2.92	0.33	0.32														
100	0.21	0.24	0.30	0.38	0.41														
105	0.24	0.30	0.39	0.46	0.49														
110	0.30	0.36	0.45	0.53	0.54														
115	0.38	0.45	0.54	0.60	0.60														
120	0.53	0.60	0.67	0.72	0.71														
125	0.74	0.79	0.86	0.89	0.87														
130	1.02	1.06	1.10	1.09	1.05														
135	1.31	1.32	1.31	1.28	1.21														
140	1.56	1.53	1.51	1.44	1.33														
145	1.80	1.76	1.69	1.58	1.48														
150	1.99	1.93	1.84	1.68	1.59														
155	2.10	2.03	1.93	1.84	1.73														
160	2.16	2.12	2.03	1.93	1.85														
165	2.10	2.09	2.04	1.94	1.87														
170	1.94	1.95	1.86	1.83	1.82														
175	1.73	1.75	1.68	1.71	1.72														
180	1.65	1.56	1.59	1.58	1.59														

C Range: 0 - 360DEG
 C Interval: 15.0DEG
 Test Speed: HIGH
 Temperature: 25.0DEG
 Operators: Alan Wang
 Test Date: 24 March 2022

γ Range: 0 - 180DEG
 γ Interval: 1.0DEG
 Test System: EVERFINE GO-R5000_V2 SYSTEM V2.00.416
 Humidity: 44.6%
 Test Distance: 2.500m [K=1.0477]
 Remarks: