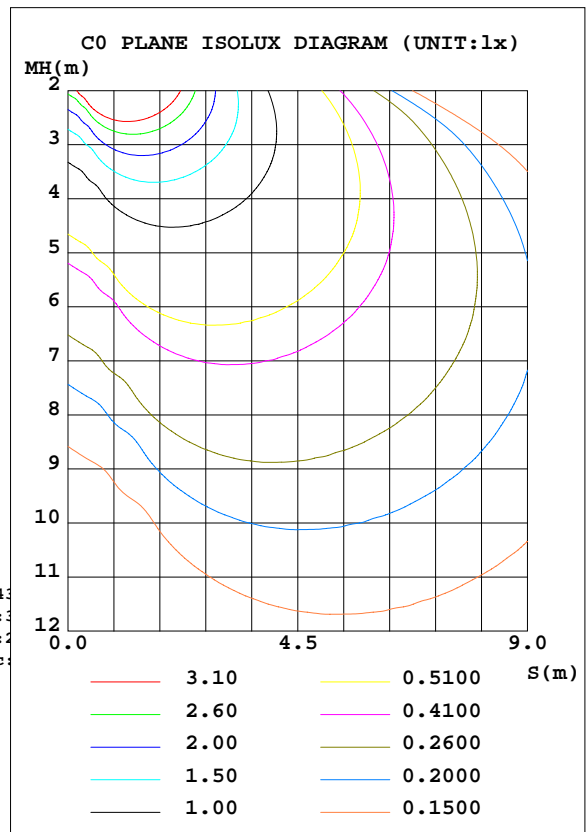
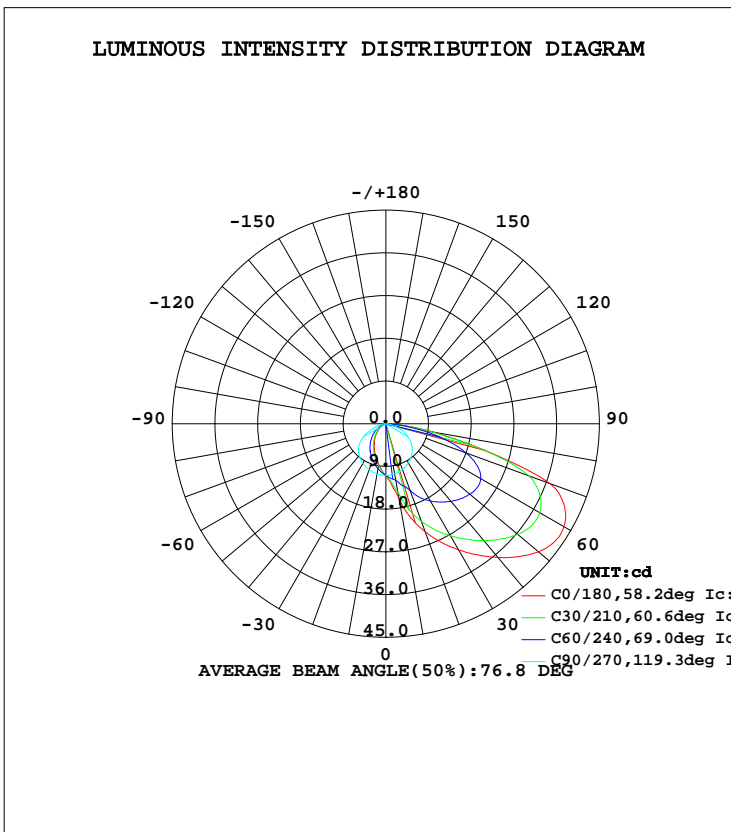


LUMINAIRE PHOTOMETRIC TEST REPORT

Test:U:120.0V I:0.0255A P:2.856W PF:0.9342 Lamp Flux:98x1 lm		
NAME: ASD-LSTL-H01W-N3CC-PC-MS-BZ-WH-BK 3000K	TYPE:LED	WEIGHT:
SPEC.:	DIM.:	SERIAL No.:
MFR.: ASD Lighting corp	SUR.:	PROTECTION ANGLE:

DATA OF LAMP		PHOTOMETRIC DATA Eff: 25.60 lm/W			
MODEL	ASD-LSTL-H01W-D3CC-BK	I _{max} (cd)	43.58	S/MH(C0/180)	0.74
NOMINAL POWER(W)	3	LOR(%)	100.0	S/MH(C90/270)	1.33
RATED VOLTAGE(V)	120	TOTAL FLUX(lm)	98	η UP, DN(C0-180)	1.1,52.9
NOMINAL FLUX(lm)	98	CIE CLASS	DIRECT	η UP, DN(C180-360)	1.2,44.9
LAMPS INSIDE	1	η up(%)	2.2	CIBSE SHR NOM	0.00
TEST VOLTAGE(V)	120	η down(%)	97.8	CIBSE SHR MAX	1.30



C Range: 0 - 360DEG
 C Interval: 15.0DEG
 Test Speed: HIGH
 Temperature:25.3DEG
 Operators:
 Test Date:2022-03-24

γ Range: 0 - 180DEG
 γ Interval: 1.0DEG
 Test System:EVERFINE GO-2000B_V1 SYSTEM V2.0.291
 Humidity:65.0%
 Test Distance:7.500m [K=1.0000]
 Remarks:

ZONAL FLUX DIAGRAM

ZONAL FLUX DIAGRAM:

γ	C0	C45	C90	C135	C180	C225	C270	C315	γ	Φ zone	Φ total	lum, lamp
10	16.14	13.56	10.71	9.103	8.725	9.245	10.73	13.57	0- 10	1.059	1.059	1.45,1.45
20	24.20	19.04	10.25	7.385	6.695	7.481	10.34	19.27	10- 20	3.479	4.539	6.21,6.21
30	30.72	23.55	9.498	5.764	4.928	5.805	9.681	24.24	20- 30	6.327	10.87	14.9,14.9
40	36.80	27.22	8.505	4.258	3.391	4.211	8.757	28.40	30- 40	9.301	20.17	27.6,27.6
50	42.00	30.29	7.127	2.883	2.043	2.759	7.446	31.96	40- 50	12.20	32.36	44.3,44.3
60	43.36	31.13	5.325	1.655	1.039	1.560	5.412	33.25	50- 60	14.37	46.73	63.9,63.9
70	36.80	26.09	3.126	0.7117	0.3463	0.6515	2.778	28.36	60- 70	14.28	61.01	83.5,83.5
80	10.06	9.514	1.030	0.2694	0.2773	0.2620	0.9036	9.735	70- 80	8.732	69.75	95.4,95.4
90	0.6785	0.5579	0.3121	0.2478	0.3120	0.2619	0.2556	0.5436	80- 90	1.751	71.50	97.8,97.8
100	0.2428	0.2878	0.2049	0.2550	0.3467	0.2619	0.2195	0.2816	90-100	0.3181	71.81	98.2,98.2
110	0.2415	0.2160	0.2003	0.2593	0.3550	0.2619	0.2195	0.2835	100-110	0.2706	72.08	98.6,98.6
120	0.2402	0.2080	0.2003	0.2629	0.3581	0.2619	0.2195	0.2817	110-120	0.2499	72.33	98.9,98.9
130	0.2388	0.2080	0.2003	0.2655	0.3268	0.2619	0.2195	0.2696	120-130	0.2236	72.56	99.2,99.2
140	0.2250	0.2080	0.2003	0.2638	0.3208	0.2619	0.2216	0.2542	130-140	0.1906	72.75	99.5,99.5
150	0.2206	0.2080	0.2003	0.2650	0.3133	0.2619	0.2252	0.2400	140-150	0.1534	72.90	99.7,99.7
160	0.2243	0.2170	0.2003	0.2567	0.3045	0.2619	0.2311	0.2350	150-160	0.1126	73.01	99.9,99.9
170	0.2310	0.2299	0.2162	0.2441	0.2927	0.2619	0.2411	0.2349	160-170	0.0693	73.08	100,100
180	0.2580	0.2388	0.2349	0.2388	0.2773	0.2426	0.2349	0.2349	170-180	0.0234	73.11	100,100
DEG	LUMINOUS INTENSITY:cd									UNIT:lm		

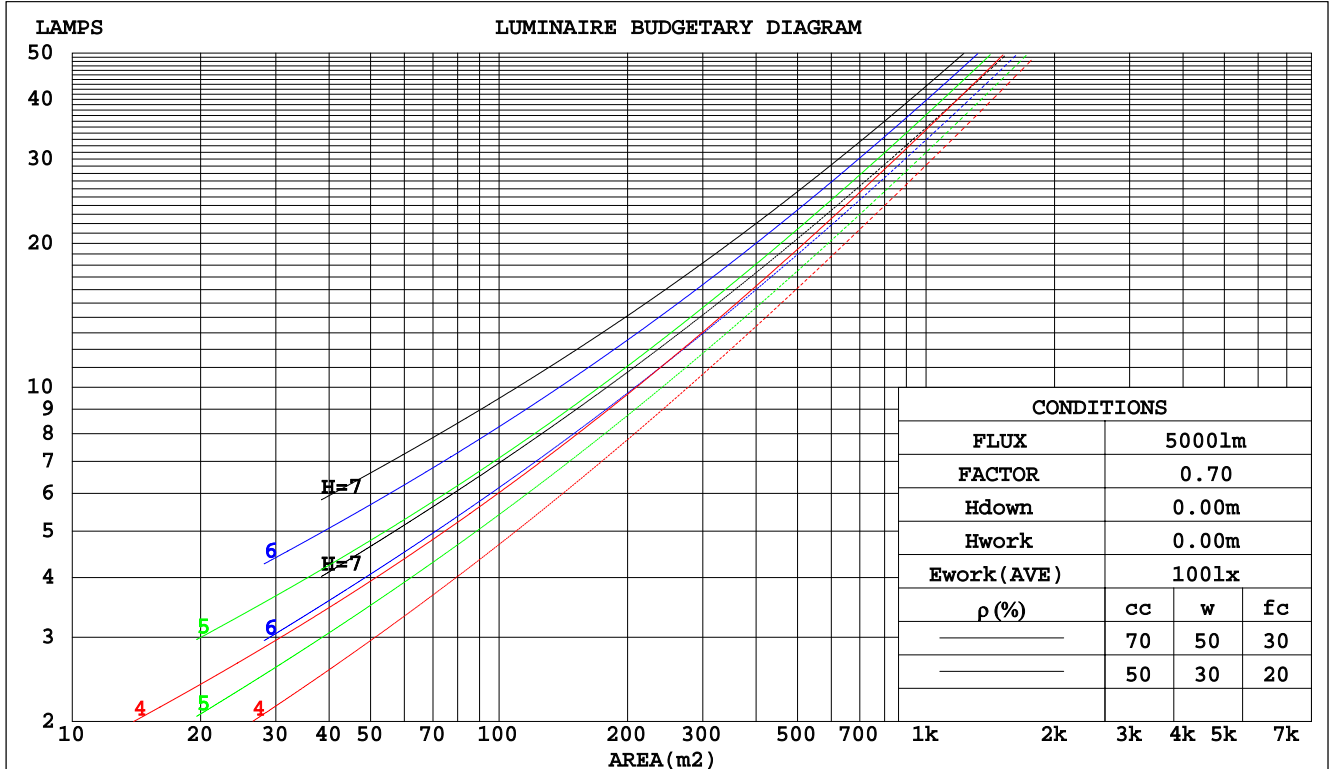
C Range: 0 - 360DEG
 C Interval: 15.0DEG
 Test Speed: HIGH
 Temperature:25.3DEG
 Operators:
 Test Date:2022-03-24

γ Range: 0 - 180DEG
 γ Interval: 1.0DEG
 Test System:EVERFINE GO-2000B_V1 SYSTEM V2.0.291
 Humidity:65.0%
 Test Distance:7.500m [K=1.0000]
 Remarks:

CU AND LUMINAIRE BUDGETARY ESTIMATE DIAGRAM

Test:U:120.0V I:0.0255A P:2.856W PF:0.9342 Lamp Flux:98x1 lm		
NAME: ASD-LSTL-H01W-D3CC-BZ/WH/BK 3000K	TYPE:LED	WEIGHT:
SPEC.:	DIM.:	SERIAL No.:
MFR.: ASD Lighting corp	SUR.:	PROTECTION ANGLE:

pcc	80%			70%			50%			30%			10%			0
pw	50%	30%	10%	50%	30%	10%	50%	30%	10%	50%	30%	10%	50%	30%	10%	0
pfc	20%			20%			20%			20%			20%			0
RCR	RCR:Room Cavity Ratio															
	Coefficients of Utilization(CU)															
0.0	1.19	1.19	1.19	1.16	1.16	1.16	1.10	1.10	1.10	1.05	1.05	1.05	1.00	1.00	1.00	.98
1.0	1.00	.95	.91	.98	.93	.89	.93	.89	.86	.89	.85	.83	.85	.82	.80	.77
2.0	.84	.76	.70	.82	.75	.69	.78	.72	.67	.75	.69	.65	.71	.67	.63	.60
3.0	.72	.62	.55	.70	.61	.54	.67	.59	.53	.63	.57	.52	.61	.55	.50	.48
4.0	.62	.52	.44	.61	.51	.44	.58	.49	.43	.55	.48	.42	.52	.46	.41	.39
5.0	.54	.44	.37	.53	.43	.36	.51	.42	.36	.48	.41	.35	.46	.40	.34	.32
6.0	.48	.38	.31	.47	.37	.31	.45	.36	.30	.43	.35	.30	.41	.34	.29	.27
7.0	.43	.33	.26	.42	.33	.26	.40	.32	.26	.38	.31	.25	.37	.30	.25	.23
8.0	.39	.29	.23	.38	.29	.23	.36	.28	.22	.35	.27	.22	.33	.27	.22	.20
9.0	.35	.26	.20	.34	.26	.20	.33	.25	.20	.32	.25	.19	.30	.24	.19	.17
10.0	.32	.23	.18	.31	.23	.18	.30	.23	.17	.29	.22	.17	.28	.22	.17	.15



C Range: 0 - 360DEG
 C Interval: 15.0DEG
 Test Speed: HIGH
 Temperature: 25.3DEG
 Operators:
 Test Date: 2022-03-24

γ Range: 0 - 180DEG
 γ Interval: 1.0DEG
 Test System: EVERFINE GO-2000B_V1 SYSTEM V2.0.291
 Humidity: 65.0%
 Test Distance: 7.500m [K=1.0000]
 Remarks:

WEC AND CCEC

Test:U:120.0V I:0.0255A P:2.856W PF:0.9342 Lamp Flux:98x1 lm		
NAME: ASD-LSTL-H01W-D3CC-BZ/WH/BK 3000K	TYPE:LED	WEIGHT:
SPEC.:	DIM.:	SERIAL No.:
MFR.: ASD Lighting corp	SUR.:	PROTECTION ANGLE:

ρcc	80%			70%			50%			30%			10%			0
ρw	50%	30%	10%	50%	30%	10%	50%	30%	10%	50%	30%	10%	50%	30%	10%	0
ρfc	20%			20%			20%			20%			20%			0
RCR	RCR:Room Cavity Ratio						Wall Exitance Coefficients(WEC)									
0.0																
1.0	.369	.210	.066	.361	.206	.065	.346	.198	.063	.332	.192	.061	.320	.185	.060	
2.0	.344	.188	.058	.337	.185	.057	.323	.180	.056	.311	.175	.055	.300	.170	.053	
3.0	.314	.167	.050	.307	.165	.050	.295	.160	.049	.284	.156	.048	.274	.152	.047	
4.0	.286	.148	.044	.280	.146	.043	.269	.143	.043	.259	.139	.042	.250	.136	.041	
5.0	.261	.133	.038	.256	.131	.038	.246	.128	.038	.237	.125	.037	.229	.122	.037	
6.0	.239	.120	.034	.234	.118	.034	.226	.116	.034	.218	.113	.033	.210	.111	.033	
7.0	.220	.109	.031	.216	.108	.031	.208	.105	.030	.201	.103	.030	.194	.101	.030	
8.0	.204	.100	.028	.200	.099	.028	.193	.097	.028	.187	.095	.027	.181	.093	.027	
9.0	.190	.092	.026	.186	.091	.025	.180	.089	.025	.174	.087	.025	.169	.086	.025	
10.0	.177	.085	.024	.174	.084	.023	.168	.083	.023	.163	.081	.023	.158	.080	.023	

ρcc	80%			70%			50%			30%			10%			0
ρw	50%	30%	10%	50%	30%	10%	50%	30%	10%	50%	30%	10%	50%	30%	10%	0
ρfc	20%			20%			20%			20%			20%			0
RCR	RCR:Room Cavity Ratio						Ceiling Cavity Exitance Coefficients(CCEC)									
0.0	.207	.207	.207	.177	.177	.177	.121	.121	.121	.069	.069	.069	.022	.022	.022	
1.0	.201	.173	.147	.172	.148	.126	.118	.102	.087	.068	.059	.051	.022	.019	.016	
2.0	.196	.149	.109	.168	.128	.094	.115	.089	.066	.066	.052	.038	.021	.017	.013	
3.0	.190	.132	.085	.163	.114	.074	.112	.079	.052	.065	.046	.031	.021	.015	.010	
4.0	.183	.119	.070	.157	.103	.061	.108	.072	.043	.062	.042	.025	.020	.014	.008	
5.0	.176	.109	.060	.151	.094	.052	.104	.066	.037	.060	.039	.022	.019	.013	.007	
6.0	.168	.101	.053	.145	.087	.046	.100	.061	.033	.058	.036	.019	.019	.012	.006	
7.0	.161	.094	.048	.138	.082	.042	.096	.057	.029	.056	.034	.018	.018	.011	.006	
8.0	.154	.089	.044	.132	.077	.038	.092	.054	.027	.053	.032	.016	.017	.010	.005	
9.0	.147	.084	.041	.127	.073	.036	.088	.051	.025	.051	.030	.015	.017	.010	.005	
10.0	.141	.079	.038	.122	.069	.034	.084	.049	.024	.049	.029	.014	.016	.009	.005	

C Range: 0 - 360DEG
 C Interval: 15.0DEG
 Test Speed: HIGH
 Temperature:25.3DEG
 Operators:
 Test Date:2022-03-24

γ Range: 0 - 180DEG
 γ Interval: 1.0DEG
 Test System:EVERFINE GO-2000B_V1 SYSTEM V2.0.291
 Humidity:65.0%
 Test Distance:7.500m [K=1.0000]
 Remarks:

UGR(Unified Glare Rating) Table

Test:U:120.0V I:0.0255A P:2.856W PF:0.9342 Lamp Flux:98x1 lm										
NAME: ASD-LSTL-H01W-D3CC-BZ/WH/BK 3000K					TYPE:LED			WEIGHT:		
SPEC.:					DIM.:			SERIAL No.:		
MFR.: ASD Lighting corp					SUR.:			PROTECTION ANGLE:		
ceiling/cavity	0.7	0.7	0.5	0.5	0.3	0.7	0.7	0.5	0.5	0.3
walls	0.5	0.3	0.5	0.3	0.3	0.5	0.3	0.5	0.3	0.3
working plane	0.2	0.2	0.2	0.2	0.2	0.2	0.2	0.2	0.2	0.2
Room dimensions	Viewed crosswise					Viewed endwise				
x = 2H y = 2H	15.8	17.5	16.1	17.7	18.0	9.8	11.5	10.1	11.8	12.0
3H	18.7	20.3	19.1	20.6	20.9	11.0	12.6	11.4	12.9	13.2
4H	19.6	21.1	19.9	21.4	21.7	11.3	12.8	11.7	13.1	13.4
6H	19.9	21.3	20.3	21.6	22.0	11.4	12.8	11.8	13.1	13.5
8H	19.9	21.3	20.3	21.7	22.0	11.4	12.7	11.8	13.1	13.4
12H	19.9	21.3	20.3	21.6	22.0	11.3	12.7	11.7	13.0	13.4
4H 2H	16.3	17.8	16.7	18.1	18.4	12.7	14.2	13.1	14.5	14.8
3H	19.5	20.8	19.9	21.1	21.5	14.2	15.5	14.6	15.9	16.3
4H	20.4	21.6	20.8	22.0	22.4	14.7	15.9	15.1	16.3	16.7
6H	20.9	21.9	21.3	22.3	22.8	14.8	15.9	15.3	16.3	16.7
8H	21.0	22.0	21.4	22.4	22.8	14.8	15.8	15.3	16.2	16.7
12H	21.0	21.9	21.4	22.3	22.8	14.8	15.7	15.3	16.2	16.6
8H 4H	20.6	21.6	21.0	22.0	22.4	16.0	17.0	16.5	17.4	17.9
6H	21.1	22.0	21.6	22.4	22.9	16.4	17.2	16.9	17.7	18.2
8H	21.3	22.0	21.8	22.5	23.0	16.4	17.2	16.9	17.7	18.2
12H	21.4	22.0	21.9	22.5	23.0	16.5	17.1	17.0	17.6	18.1
12H 4H	20.6	21.5	21.0	21.9	22.4	16.1	17.0	16.6	17.5	17.9
6H	21.1	21.9	21.6	22.4	22.9	16.6	17.3	17.1	17.8	18.3
8H	21.3	22.0	21.8	22.5	23.0	16.7	17.3	17.2	17.8	18.4
Variations with the observer position at spacings:										
S = 1.0H	+ 0.1 / - 0.1					+ 0.1 / - 0.1				
1.5H	+ 0.2 / - 0.3					+ 0.3 / - 0.4				
2.0H	+ 0.2 / - 0.3					+ 0.6 / - 0.8				

C Range: 0 - 360DEG
 C Interval: 15.0DEG
 Test Speed: HIGH
 Temperature:25.3DEG
 Operators:
 Test Date:2022-03-24

γ Range: 0 - 180DEG
 γ Interval: 1.0DEG
 Test System:EVERFINE GO-2000B_V1 SYSTEM V2.0.291
 Humidity:65.0%
 Test Distance:7.500m [K=1.0000]
 Remarks:

UTILIZATION FACTORS TABLE

Test:U:120.0V I:0.0255A P:2.856W PF:0.9342 Lamp Flux:98x1 lm		
NAME: ASD-LSTL-H01W-D3CC-BZ/WH/BK 3000K	TYPE:LED	WEIGHT:
SPEC.:	DIM.:	SERIAL No.:
MFR.: ASD Lighting corp	SUR.:	PROTECTION ANGLE:

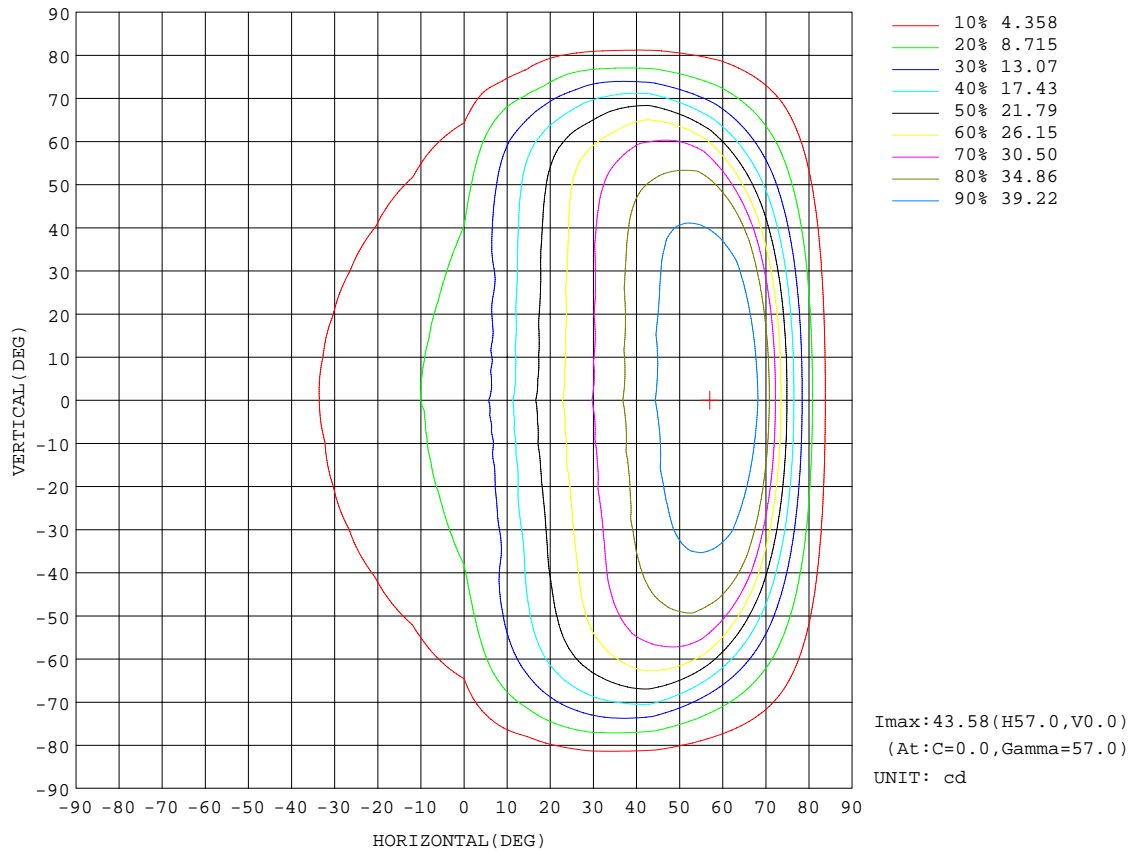
REFLECTANCE										
Ceiling	0.8	0.8	0.8	0.7	0.7	0.7	0.5	0.5	0.5	0
Walls	0.7	0.5	0.3	0.7	0.5	0.3	0.7	0.5	0.3	0
Working plane	0.2	0.2	0.2	0.2	0.2	0.2	0.2	0.2	0.2	0
ROOM INDEX	UTILIZATION FACTORS(PERCENT) k(RI) x RCR = 5									
k = 0.60	48	35	27	47	34	27	46	34	26	19
0.80	58	44	36	57	44	35	54	43	35	27
1.00	67	53	45	65	53	44	62	54	44	35
1.25	74	62	53	73	61	52	69	59	52	43
1.50	80	68	59	78	67	59	74	65	58	48
2.00	88	78	70	86	76	69	82	74	67	58
2.50	93	84	76	91	82	75	86	79	73	63
3.00	97	89	82	95	87	81	90	84	79	69
4.00	103	96	90	100	94	88	95	90	85	75
5.00	106	100	95	103	98	93	98	94	90	79
ROOM INDEX	UF(total)									Direct
According to DIN EN 13032-2 2004			Suspended				SHRNOM = 1.25			

C Range: 0 - 360DEG
 C Interval: 15.0DEG
 Test Speed: HIGH
 Temperature:25.3DEG
 Operators:
 Test Date:2022-03-24

γ Range: 0 - 180DEG
 γ Interval: 1.0DEG
 Test System:EVERFINE GO-2000B_V1 SYSTEM V2.0.291
 Humidity:65.0%
 Test Distance:7.500m [K=1.0000]
 Remarks:

ISOCANDELA DIAGRAM

Test:U:120.0V I:0.0255A P:2.856W PF:0.9342 Lamp Flux:98x1 lm		
NAME: ASD-LSTL-H01W-D3CC-BZ/WH/BK 3000K	TYPE:LED	WEIGHT:
SPEC.:	DIM.:	SERIAL No.:
MFR.: ASD Lighting corp	SUR.:	PROTECTION ANGLE:

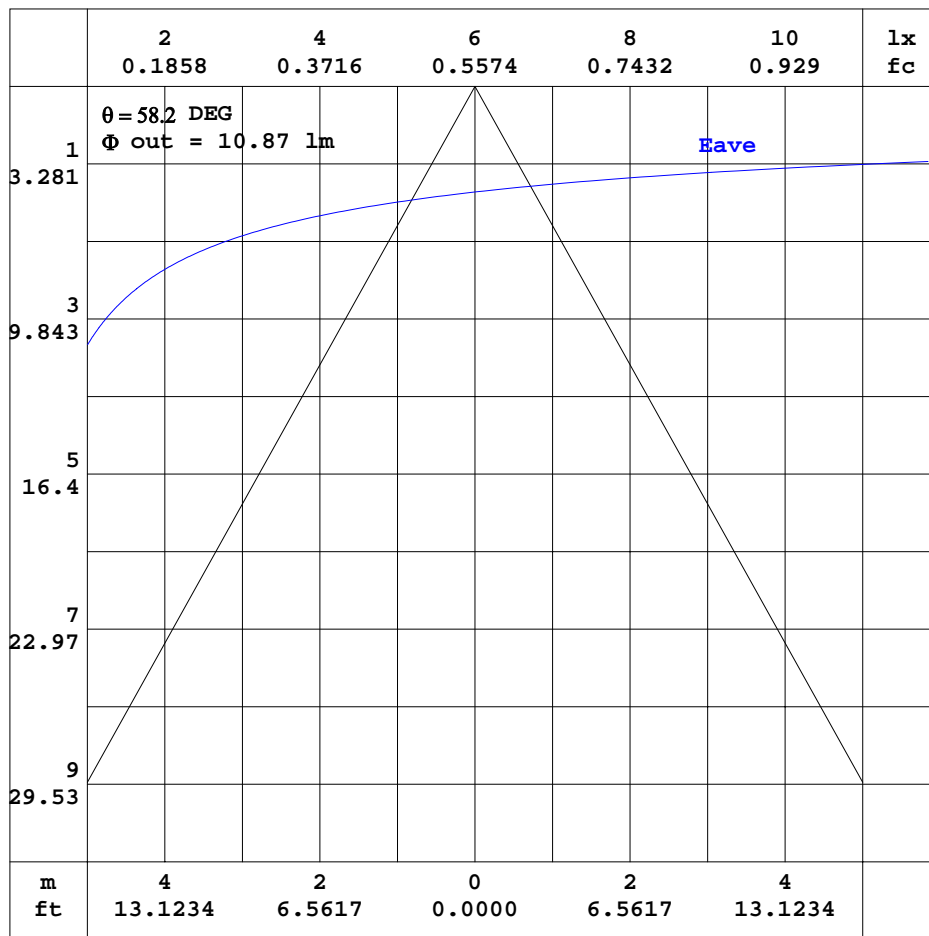


C Range: 0 - 360DEG
 C Interval: 15.0DEG
 Test Speed: HIGH
 Temperature: 25.3DEG
 Operators:
 Test Date: 2022-03-24

γ Range: 0 - 180DEG
 γ Interval: 1.0DEG
 Test System: EVERFINE GO-2000B_V1 SYSTEM V2.0.291
 Humidity: 65.0%
 Test Distance: 7.500m [K=1.0000]
 Remarks:

AAI CURVES

Test:U:120.0V I:0.0255A P:2.856W PF:0.9342 Lamp Flux:98x1 lm		
NAME: ASD-LSTL-H01W-D3CC-BZ/WH/BK 3000K	TYPE:LED	WEIGHT:
SPEC.:	DIM.:	SERIAL No.:
MFR.: ASD Lighting corp	SUR.:	PROTECTION ANGLE:



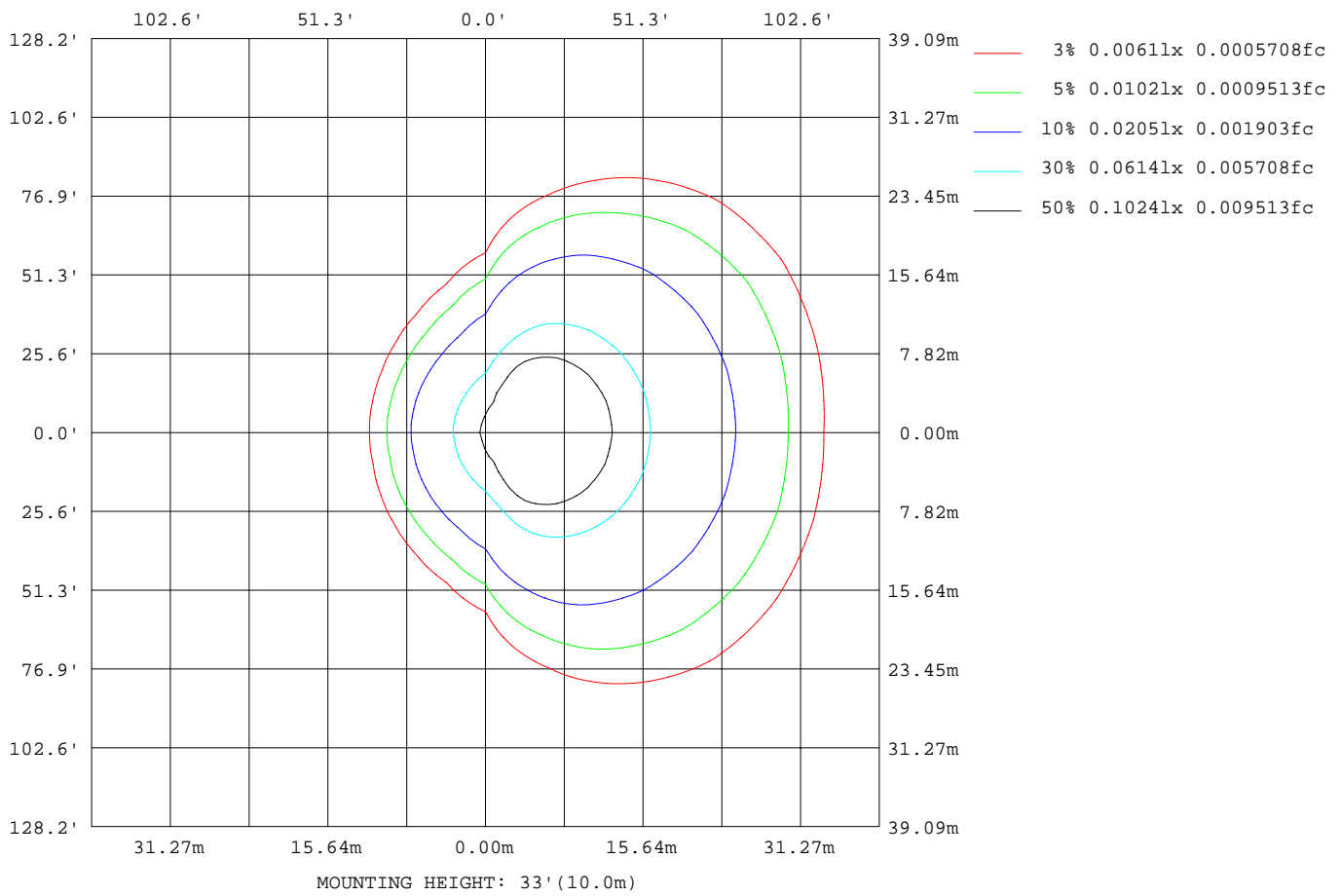
Note:The Curves indicate the illuminated area and the average illumination when the luminaire is at different distance.

C Range: 0 - 360DEG
 C Interval: 15.0DEG
 Test Speed: HIGH
 Temperature:25.3DEG
 Operators:
 Test Date:2022-03-24

γ Range: 0 - 180DEG
 γ Interval: 1.0DEG
 Test System:EVERFINE GO-2000B_V1 SYSTEM V2.0.291
 Humidity:65.0%
 Test Distance:7.500m [K=1.0000]
 Remarks:

ISOLUX DIAGRAM

Test:U:120.0V I:0.0255A P:2.856W PF:0.9342 Lamp Flux:98x1 lm		
NAME: ASD-LSTL-H01W-D3CC-BZ/WH/BK 3000K	TYPE:LED	WEIGHT:
SPEC.:	DIM.:	SERIAL No.:
MFR.: ASD Lighting corp	SUR.:	PROTECTION ANGLE:



C Range: 0 - 360DEG
 C Interval: 15.0DEG
 Test Speed: HIGH
 Temperature:25.3DEG
 Operators:
 Test Date:2022-03-24

γ Range: 0 - 180DEG
 γ Interval: 1.0DEG
 Test System:EVERFINE GO-2000B_V1 SYSTEM V2.0.291
 Humidity:65.0%
 Test Distance:7.500m [K=1.0000]
 Remarks:

LED Avg.L Report

Test:U:120.0V I:0.0255A P:2.856W PF:0.9342 Lamp Flux:98x1 lm		
NAME: ASD-LSTL-H01W-D3CC-BZ/WH/BK 3000K	TYPE:LED	WEIGHT:
SPEC.:	DIM.:	SERIAL No.:
MFR.: ASD Lighting corp	SUR.:	PROTECTION ANGLE:

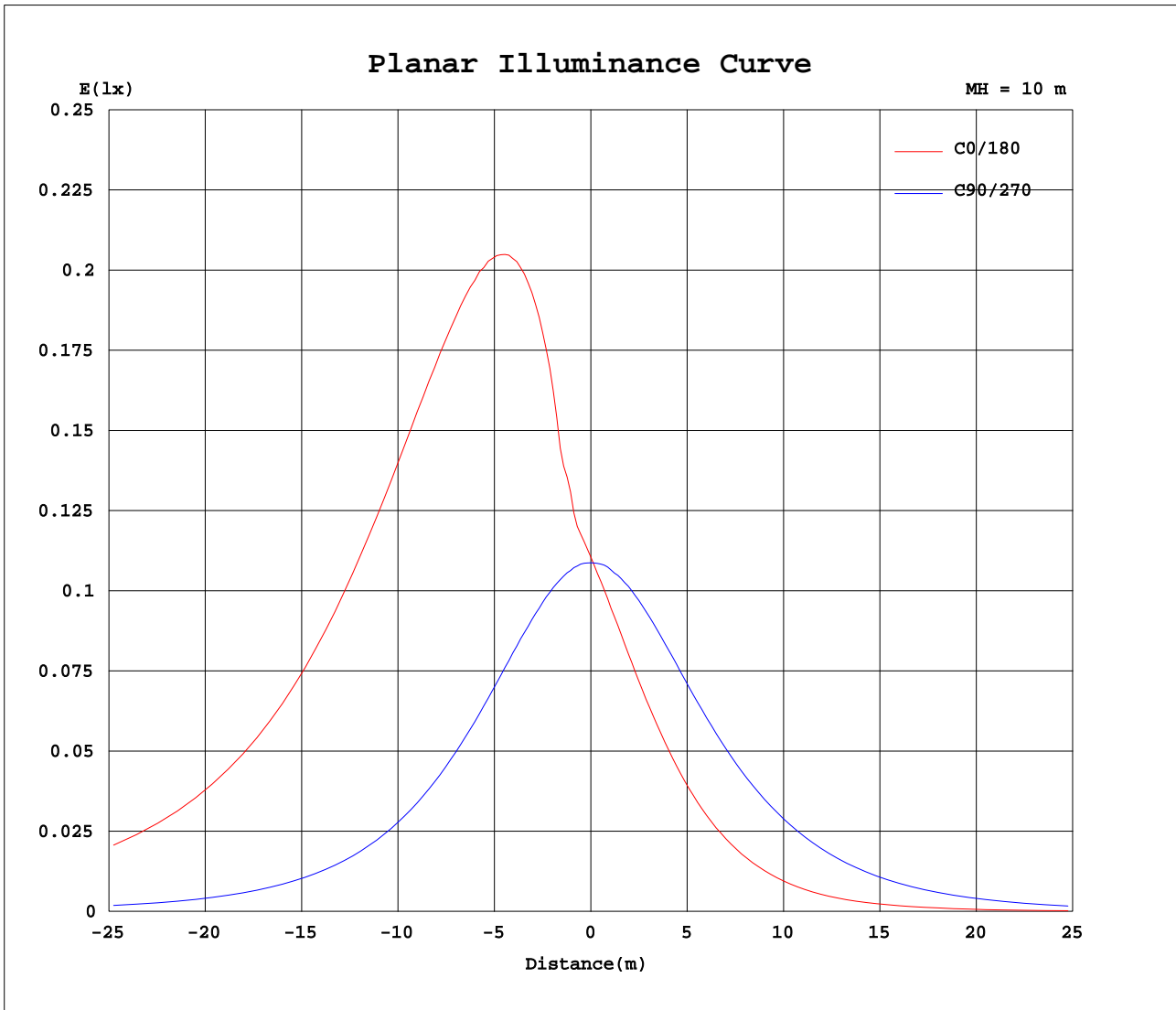
AvgL	cd/m2
L_0~180(65)av	499
L_0~180(75)av	419
L_0~180(85)av	178
L_90~270(65)av	100
L_90~270(75)av	72
L_90~270(85)av	48
L_45(65)av	378
L_45(75)av	388
L_45(85)av	186

Standard: GB/T 29293-2012

C Range: 0 - 360DEG
C Interval: 15.0DEG
Test Speed: HIGH
Temperature:25.3DEG
Operators:
Test Date:2022-03-24

γ Range: 0 - 180DEG
 γ Interval: 1.0DEG
Test System:EVERFINE GO-2000B_V1 SYSTEM V2.0.291
Humidity:65.0%
Test Distance:7.500m [K=1.0000]
Remarks:

Planar Illuminance Curve



C Range: 0 - 360DEG
 C Interval: 15.0DEG
 Test Speed: HIGH
 Temperature: 25.3DEG
 Operators:
 Test Date: 2022-03-24

γ Range: 0 - 180DEG
 γ Interval: 1.0DEG
 Test System: EVERFINE GO-2000B_V1 SYSTEM V2.0.291
 Humidity: 65.0%
 Test Distance: 7.500m [K=1.0000]
 Remarks:

LUMINOUS DISTRIBUTION INTENSITY DATA

Test:U:120.0V I:0.0255A P:2.856W PF:0.9342 Lamp Flux:98x1 lm		
NAME: ASD-LSTL-H01W-D3CC-BZ/WH/BK 3000K	TYPE:LED	WEIGHT:
SPEC.:	DIM.:	SERIAL No.:
MFR.: ASD Lighting corp	SUR.:	PROTECTION ANGLE:

Table--1

UNIT: cd

C(DEG) γ (DEG)	0	15	30	45	60	75	90	105	120	135	150	165	180	195	210	225	240	255	270
0	11.1	11.0	11.0	11.0	10.9	10.9	10.9	10.9	10.9	10.9	10.9	10.9	11.1	11.0	11.0	11.0	10.9	10.9	10.9
5	12.6	12.3	12.2	11.8	11.5	11.2	10.8	10.5	10.2	9.98	9.81	9.72	9.87	9.88	9.98	10.1	10.3	10.6	10.9
10	16.1	15.5	14.6	13.6	12.1	11.4	10.7	10.0	9.53	9.10	8.78	8.61	8.72	8.77	8.96	9.24	9.65	10.2	10.7
15	20.6	19.9	18.7	16.0	13.5	11.5	10.5	9.57	8.83	8.24	7.81	7.58	7.67	7.73	7.97	8.37	8.92	9.69	10.6
20	24.2	23.4	21.8	19.0	15.0	11.6	10.2	9.04	8.09	7.39	6.92	6.63	6.70	6.76	7.03	7.48	8.18	9.15	10.3
25	27.5	26.6	24.7	21.4	17.2	12.0	9.90	8.43	7.35	6.56	6.04	5.74	5.77	5.85	6.13	6.64	7.42	8.57	10.0
30	30.7	29.6	27.3	23.6	18.8	12.6	9.50	7.79	6.60	5.76	5.22	4.91	4.93	5.00	5.27	5.81	6.64	7.91	9.68
35	33.7	32.5	29.7	25.4	20.2	12.9	9.04	7.11	5.84	5.00	4.47	4.14	4.13	4.21	4.47	5.00	5.84	7.20	9.25
40	36.8	35.3	32.1	27.2	21.3	13.8	8.51	6.38	5.10	4.26	3.73	3.41	3.39	3.46	3.70	4.21	5.05	6.45	8.76
45	39.6	38.0	34.3	28.9	22.3	14.5	7.87	5.61	4.36	3.56	3.05	2.72	2.69	2.74	2.99	3.46	4.26	5.64	8.17
50	42.0	40.2	36.3	30.3	23.1	14.7	7.13	4.84	3.64	2.88	2.39	2.07	2.04	2.10	2.31	2.76	3.50	4.81	7.45
55	43.4	41.7	37.4	31.2	23.5	14.5	6.28	4.04	2.95	2.25	1.78	1.51	1.48	1.55	1.74	2.12	2.76	3.95	6.54
60	43.4	41.7	37.5	31.1	23.1	13.7	5.32	3.26	2.30	1.66	1.28	1.06	1.04	1.10	1.23	1.56	2.07	3.09	5.41
65	41.5	40.0	35.9	29.7	21.4	12.1	4.27	2.50	1.70	1.15	0.86	0.64	0.63	0.69	0.80	1.08	1.48	2.26	4.16
70	36.8	35.8	32.1	26.1	18.0	9.68	3.13	1.77	1.17	0.71	0.49	0.35	0.35	0.40	0.43	0.65	0.97	1.51	2.78
75	21.4	21.7	20.9	19.0	13.1	6.65	1.99	1.13	0.69	0.37	0.30	0.27	0.29	0.29	0.28	0.36	0.53	0.90	1.72
80	10.1	10.1	9.73	9.51	7.09	3.36	1.03	0.61	0.36	0.27	0.27	0.26	0.28	0.28	0.27	0.26	0.28	0.48	0.90
85	2.81	3.01	2.91	3.00	2.22	1.03	0.48	0.30	0.28	0.25	0.26	0.27	0.29	0.28	0.28	0.26	0.24	0.29	0.37
90	0.68	0.54	0.64	0.56	0.49	0.35	0.31	0.23	0.23	0.25	0.26	0.28	0.31	0.28	0.29	0.26	0.24	0.24	0.26
95	0.35	0.35	0.35	0.33	0.25	0.20	0.21	0.23	0.23	0.25	0.26	0.29	0.33	0.30	0.30	0.26	0.24	0.24	0.22
100	0.24	0.27	0.25	0.29	0.22	0.20	0.20	0.22	0.23	0.25	0.26	0.30	0.35	0.30	0.30	0.26	0.24	0.24	0.22
105	0.24	0.25	0.25	0.25	0.22	0.20	0.20	0.22	0.23	0.26	0.26	0.32	0.36	0.30	0.30	0.26	0.24	0.24	0.22
110	0.24	0.23	0.24	0.22	0.22	0.20	0.20	0.22	0.23	0.26	0.26	0.32	0.35	0.30	0.30	0.26	0.24	0.24	0.22
115	0.24	0.23	0.24	0.21	0.21	0.20	0.20	0.22	0.23	0.26	0.26	0.32	0.36	0.31	0.30	0.26	0.24	0.24	0.22
120	0.24	0.23	0.24	0.21	0.21	0.20	0.20	0.21	0.23	0.26	0.27	0.32	0.36	0.31	0.29	0.26	0.24	0.23	0.22
125	0.24	0.22	0.24	0.21	0.21	0.20	0.20	0.21	0.23	0.26	0.27	0.32	0.34	0.31	0.29	0.26	0.24	0.23	0.22
130	0.24	0.22	0.23	0.21	0.21	0.20	0.20	0.22	0.23	0.27	0.27	0.32	0.33	0.31	0.29	0.26	0.24	0.23	0.22
135	0.23	0.22	0.22	0.21	0.20	0.20	0.20	0.22	0.23	0.26	0.28	0.32	0.32	0.31	0.28	0.26	0.24	0.23	0.22
140	0.22	0.22	0.22	0.21	0.20	0.20	0.20	0.23	0.23	0.26	0.30	0.32	0.32	0.31	0.28	0.26	0.24	0.23	0.22
145	0.22	0.22	0.21	0.21	0.20	0.20	0.20	0.23	0.23	0.26	0.30	0.32	0.32	0.31	0.28	0.26	0.24	0.23	0.22
150	0.22	0.22	0.22	0.21	0.20	0.21	0.20	0.24	0.23	0.27	0.30	0.32	0.31	0.31	0.27	0.26	0.24	0.23	0.23
155	0.22	0.23	0.22	0.21	0.20	0.21	0.20	0.24	0.23	0.26	0.30	0.31	0.30	0.31	0.26	0.26	0.24	0.23	0.23
160	0.22	0.23	0.22	0.22	0.20	0.22	0.20	0.25	0.23	0.26	0.30	0.30	0.30	0.31	0.26	0.26	0.24	0.23	0.23
165	0.23	0.23	0.22	0.22	0.20	0.22	0.20	0.25	0.23	0.25	0.30	0.30	0.30	0.31	0.26	0.26	0.24	0.23	0.24
170	0.23	0.24	0.22	0.23	0.20	0.23	0.22	0.25	0.23	0.24	0.29	0.29	0.29	0.29	0.25	0.26	0.24	0.23	0.24
175	0.24	0.26	0.23	0.24	0.20	0.23	0.22	0.24	0.23	0.24	0.28	0.28	0.28	0.28	0.25	0.25	0.24	0.23	0.24
180	0.26	0.26	0.23	0.24	0.22	0.23	0.23	0.24	0.24	0.24	0.27	0.27	0.28	0.27	0.25	0.24	0.23	0.23	0.23

C Range: 0 - 360DEG
 C Interval: 15.0DEG
 Test Speed: HIGH
 Temperature:25.3DEG
 Operators:
 Test Date:2022-03-24

γ Range: 0 - 180DEG
 γ Interval: 1.0DEG
 Test System:EVERFINE GO-2000B_V1 SYSTEM V2.0.291
 Humidity:65.0%
 Test Distance:7.500m [K=1.0000]
 Remarks:

LUMINOUS DISTRIBUTION INTENSITY DATA

Test:U:120.0V I:0.0255A P:2.856W PF:0.9342 Lamp Flux:98x1 lm		
NAME: ASD-LSTL-H01W-D3CC-BZ/WH/BK 3000K	TYPE:LED	WEIGHT:
SPEC.:	DIM.:	SERIAL No.:
MFR.: ASD Lighting corp	SUR.:	PROTECTION ANGLE:

Table--2

UNIT: cd

C(DEG) γ (DEG)	285	300	315	330	345														
0	10.9	10.9	10.9	10.9	10.9														
5	11.2	11.5	11.8	12.0	12.2														
10	11.4	12.2	13.6	14.3	15.2														
15	11.6	13.6	16.2	18.3	19.8														
20	12.1	15.4	19.3	21.7	23.4														
25	12.7	17.6	21.9	24.8	26.7														
30	13.2	19.4	24.2	27.6	29.8														
35	14.3	21.0	26.4	30.3	32.8														
40	15.1	22.5	28.4	32.8	35.7														
45	15.7	23.8	30.3	35.2	38.5														
50	16.1	24.9	32.0	37.4	40.8														
55	16.0	25.5	33.1	38.8	42.3														
60	15.1	25.2	33.2	39.0	42.5														
65	12.9	23.1	31.9	37.7	40.9														
70	9.65	19.0	28.4	34.4	37.0														
75	5.47	13.4	20.4	23.4	22.8														
80	3.03	6.64	9.74	11.0	10.9														
85	1.08	1.85	2.96	3.48	3.40														
90	0.31	0.39	0.54	0.62	0.64														
95	0.27	0.25	0.33	0.35	0.35														
100	0.25	0.23	0.28	0.32	0.29														
105	0.24	0.23	0.28	0.30	0.29														
110	0.24	0.23	0.28	0.28	0.29														
115	0.23	0.23	0.28	0.27	0.29														
120	0.23	0.23	0.28	0.26	0.29														
125	0.23	0.23	0.27	0.26	0.29														
130	0.23	0.23	0.27	0.25	0.29														
135	0.22	0.23	0.26	0.24	0.28														
140	0.22	0.23	0.25	0.24	0.27														
145	0.22	0.23	0.24	0.24	0.26														
150	0.22	0.23	0.24	0.24	0.25														
155	0.22	0.23	0.23	0.24	0.24														
160	0.22	0.23	0.23	0.24	0.24														
165	0.22	0.23	0.23	0.25	0.24														
170	0.22	0.24	0.23	0.25	0.25														
175	0.23	0.24	0.23	0.25	0.25														
180	0.24	0.25	0.23	0.25	0.26														

C Range: 0 - 360DEG
 C Interval: 15.0DEG
 Test Speed: HIGH
 Temperature:25.3DEG
 Operators:
 Test Date:2022-03-24

γ Range: 0 - 180DEG
 γ Interval: 1.0DEG
 Test System:EVERFINE GO-2000B_V1 SYSTEM V2.0.291
 Humidity:65.0%
 Test Distance:7.500m [K=1.0000]
 Remarks: