



# LED CANOPY SLIM SERIES

## Standard Series

ASD Slim Series LED square Canopy light is the ideal solution for outdoor lighting. Protected from total dust ingress and low pressure water jets.

It has an extremely thin profile constructed of rugged cast aluminum. It can be surface mounted easily from below the canopy deck and also has the ability to be pendant mounted.

Applications: gas stations, underground space, warehouses, low-medium bay industrial areas, soffits.

### FEATURES AND BENEFITS:

- ▶ Flat diffusing lens
- ▶ Durable, strong housing
- ▶ Finish: white
- ▶ SMD chips for brighter light
- ▶ Easy mounting and servicing
- ▶ Operating temperature of -4°F to 113°F
- ▶ Wet location IP65
- ▶ cULus certified
- ▶ DesignLights Consortium (DLC) listed (Classification: Standard)
- ▶ 5 Year warranty

Catalog number	
Notes	
Type	



### PRODUCT LEGEND:

Family	Modification	Watts	Dimmable	CCT
<b>ASD-CAN</b>	<b>03F</b>	<b>XX</b>	<b>N</b>	<b>40</b>
LED Canopy	with flat lens	100 = 100 W 150 = 150 W	Non-dimmable	4,000 K

### LED CANOPY SLIM SERIES:

Model	Watts	Dimming Compatible	CCT	Lumens	Dimensions (LxWxH)
ASD-CAN03F-100N40	100 W	NO	4,000 K	10,825 lm	15" x 15" x 2 11/16"
ASD-CAN03F-150N40	150 W	NO	4,000 K	16,056 lm	15" x 15" x 2 11/16"

### PRODUCT SPECIFICATIONS:

Construction & Materials			Electrical System		
Lens	Acryl		Input Voltage	120-277 V	
Reflector	Aluminum		Max input current	ASD-CAN03F-100N40	1.1 A
Housing	Aluminum			ASD-CAN03F-150N40	2 A
Finish	White		Inrush current (Action time)	40 A (200 uS)	
Weight	ASD-CAN03F-100N40	13.2 lb (6 kg)	AC input range	min 100 V    max 277 V	
	ASD-CAN03F-150N40	13.64 lb (6.2 kg)	Off State Power	0 W	
Environmental System			Power Consumption	ASD-CAN03F-100N40	100 W
Work Environment	Suitable for Wet Locations, IP65			ASD-CAN03F-150N40	150 W
Operating Temperature	-4°F to 113°F (-20°C to 45°C)		Power Factor	≥ 0.9	
L-70 Life	R > 36,000 hrs, C > 216,000 hrs		Output voltage	36-48 V	
Optical System			Max output current	ASD-CAN03F-100N40	2.1 A
Luminous Flux	ASD-CAN03F-100N40	10,825 lm		ASD-CAN03F-150N40	3.15 A
	ASD-CAN03F-150N40	16,056 lm	LED driver class	Class 1	
Color Temperature	4,000 K		Warranty & Certifications		
CRI	>80		5-year limited warranty		
			DesignLights Consortium (DLC) listed (Classification: Standard)		
			cULus certified	E473804	

For most up-to-date spec sheets please refer to [asd-lighting.com](http://asd-lighting.com)

**ASD LIGHTING CORP**

E-mail: [orders@asd-lighting.com](mailto:orders@asd-lighting.com) | Web site: [www.asd-lighting.com](http://www.asd-lighting.com)





# LED CANOPY SLIM SERIES

## Standard Series

### ORDERING INFORMATION:

Model	Watts	UPC	Product Code	Pcs in one Carton	Carton Size	Carton Weight
ASD-CAN03F-100N40	100 W	819201020706	025.0111	1	16.7" x 16.5" x 4.7"	15.4 lbs
ASD-CAN03F-150N40	150 W	819201020713	025.0112	1	16.7" x 16.5" x 4.7"	15.84 lbs

### ACCESSORIES:

Model	Name	Materials	Weight	Dimensions	Pcs in one Carton
ASD-PMB-CAN03	Pendant Mounting Bracket	Aluminum	3.3 lbs (1.5 kg)	12 3/16" x 8" x 2 3/16"	10
ASD-BP-CAN03	Beauty plate	Steel	10.6 lbs (4.8 kg)	21 5/8" x 21 5/8" x 1/8"	5
Model	Carton Size	Carton Weight	UPC	GTIN 14	
ASD-PMB-CAN03	17.3" x 13" x 14.2"	34.1 lbs	819201020898	20819201020892	
ASD-BP-CAN03	23.8" x 2.6" x 24.2"	55.1 lbs	819201025756	10819201025753	

## INSTALLATION GUIDE

### IMPORTANT SAFETY INFORMATION:

Please read all the instructions below before installation.

- ▶ Make sure that the supply voltage corresponds to the rated product voltage.
- ▶ The product must be installed by a qualified electrician in accordance with the National Electrical Code and corresponding local codes.
- ▶ If the product is damaged, do not use it.

### ⚠ WARNING

**RISK OF PERSONAL INJURY** – READ and follow all WARNINGS and installation instructions. Keep or give to the owner for future reference.

**Risk of cuts:** Wear gloves to prevent cuts or abrasions when removing from carton, handling, installing, and maintaining this product.

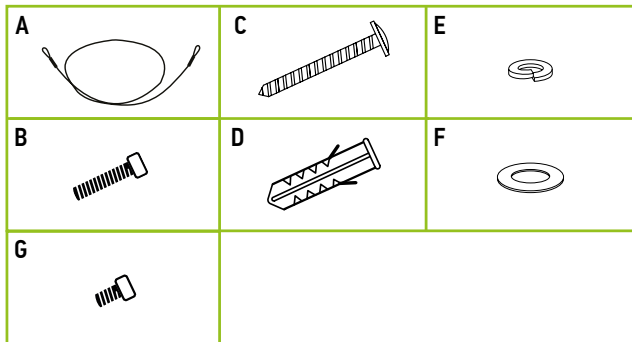
**Risk of electric shock:** This product must be installed in accordance with the applicable installation code by a person familiar with the construction and operation of the product and the hazards involved.

**Risk of Fire:** Minimum 194°F supply conductors. Consult a qualified electrician to ensure correct branch circuit conductor.

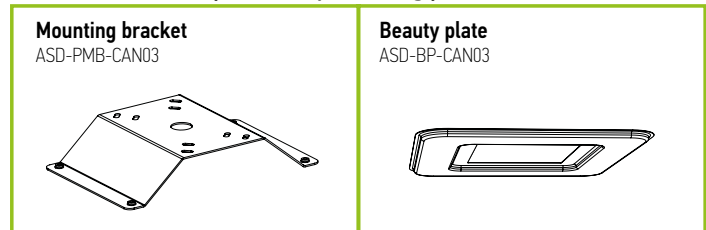
ASD® assumes no responsibility for claims arising out of improper or careless installation or handling of this product.

### PACKAGE CONTENTS:

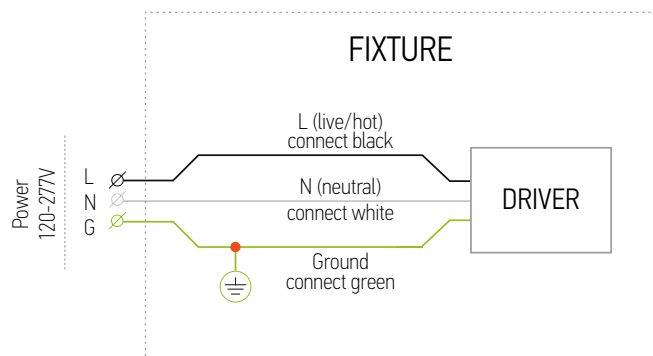
Description	Q-ty
LED Canopy Slim Series Fixture	1
Safety rope (A)	1
Locking bolt (B)	4
Screw (C)	5
Anchor (D)	5
Split washer (E)	4
Washer (F)	4
PM5*6 Screw (G)	1
Box	1
Cut Sheet	2



### ACCESSORIES (sold separately):



### ELECTRICAL SCHEMATIC DIAGRAM



For most up-to-date spec sheets please refer to [asd-lighting.com](http://asd-lighting.com)

ASD LIGHTING CORP

E-mail: [orders@asd-lighting.com](mailto:orders@asd-lighting.com) | Web site: [www.asd-lighting.com](http://www.asd-lighting.com)





# LED CANOPY SLIM SERIES

## Standard Series

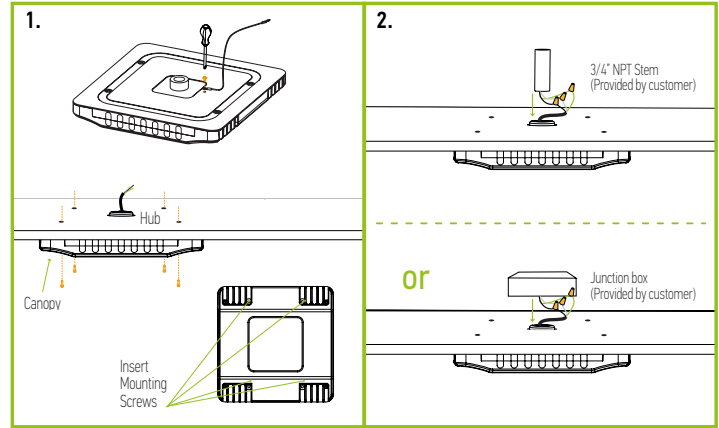
### INSTALLATION STEPS

#### SURFACE MOUNT

1. Fix the safety rope on the back of fixture. Drill the alignment holes on the top ceiling, make them match to the holes on fixture (Reference supplied screws for diameter of holes).
2. Insert the supplied rubbers into the alignment holes, lock the safety rope on the ceiling.  
From above canopy feed leads from luminaire through customer supplied 3/4" NPT Stem. Screw customer supplied NPT Stem into luminaire hub. Attach customer supplied junction box to the other end of the customer supplied 3/4" NPT Stem and make wiring connections into customer supplied junction box per "Electrical Connections" section.

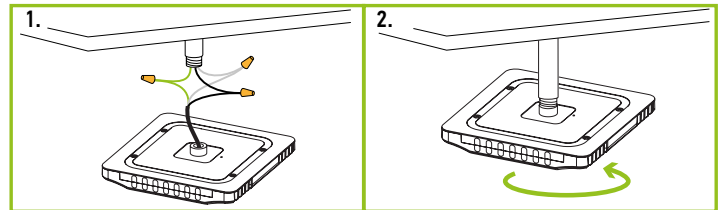
Or for use with customer supplied junction box. Junction box must be 4" square or octagon. Make wiring connections into junction box per "Electrical Connections" section.

Mount the fixture on the ceiling by supplied screws.



#### POLE MOUNT

1. Use a customer supplied 3/4"NPT Stem. The feed leads should through the stem. Make wiring connections per the Connection Diagram section (black wire to line (hot), white wire to neutral, green to ground).
2. Screws stem into the treaded hub of the luminaire.

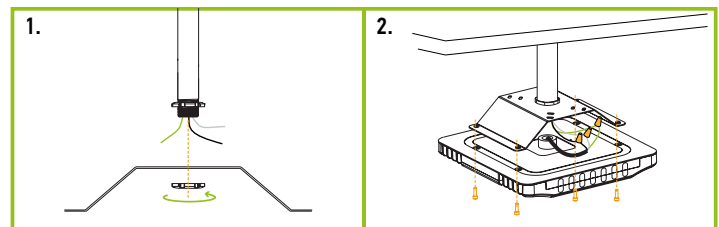


#### PENDANT MOUNTING BRACKET INSTALLATION

**ASD-PMB-CAN03** sold separately:

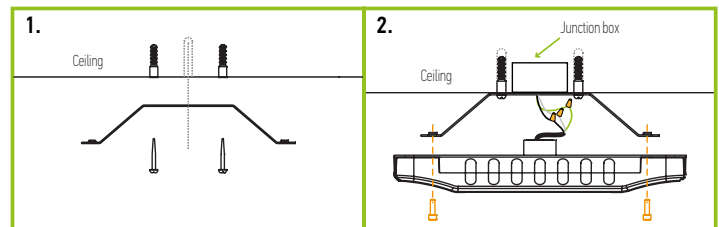
##### A. POLE MOUNT

1. Install mounting plate on customer supplied 3/4"NPT Stem using 2 customer supplied locknuts.
2. Make wiring connections per the Connection Diagram section (black wire to line (hot), white wire to neutral, green to ground). Mount fixture to the mounting plate.



##### B. SURFACE MOUNT

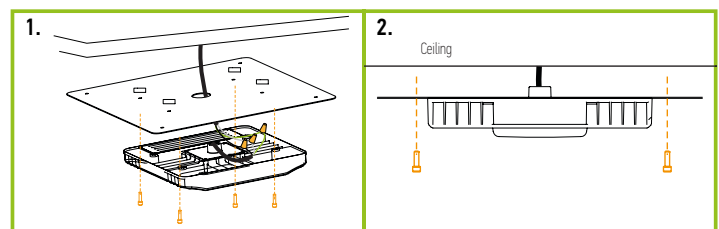
1. Drill the alignment holes on the top ceiling, make them match to the holes on mounting bracket. Insert the supplied rubbers into the alignment holes, then fix the mounting plate on the ceiling by supplied screws.
2. Mount the fixture on the mounting plate by supplied screws. Make wiring connections per "Electrical Connections" section and make sure the good wire protection.



#### BEAUTY PLATE INSTALLATION

**ASD-BP-CAN03** sold separately:

1. Install the beauty plate on the canopy light with 4pcs of M6\*25mm screws (included).
2. Use existing holes in beauty plate to finish surface installation with 4 of M6\*60mm screws (included).



For most up-to-date spec sheets please refer to [asd-lighting.com](http://asd-lighting.com)

**ASD LIGHTING CORP**

E-mail: [orders@asd-lighting.com](mailto:orders@asd-lighting.com) | Web site: [www.asd-lighting.com](http://www.asd-lighting.com)

