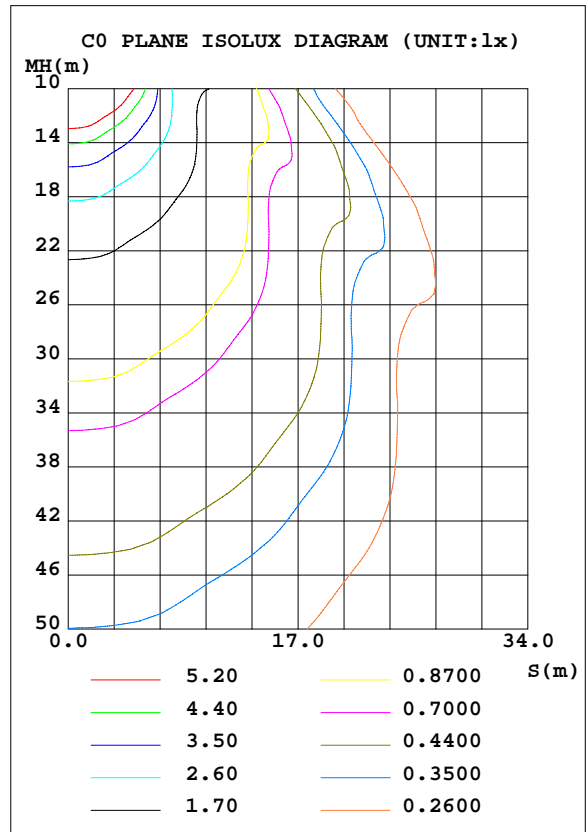
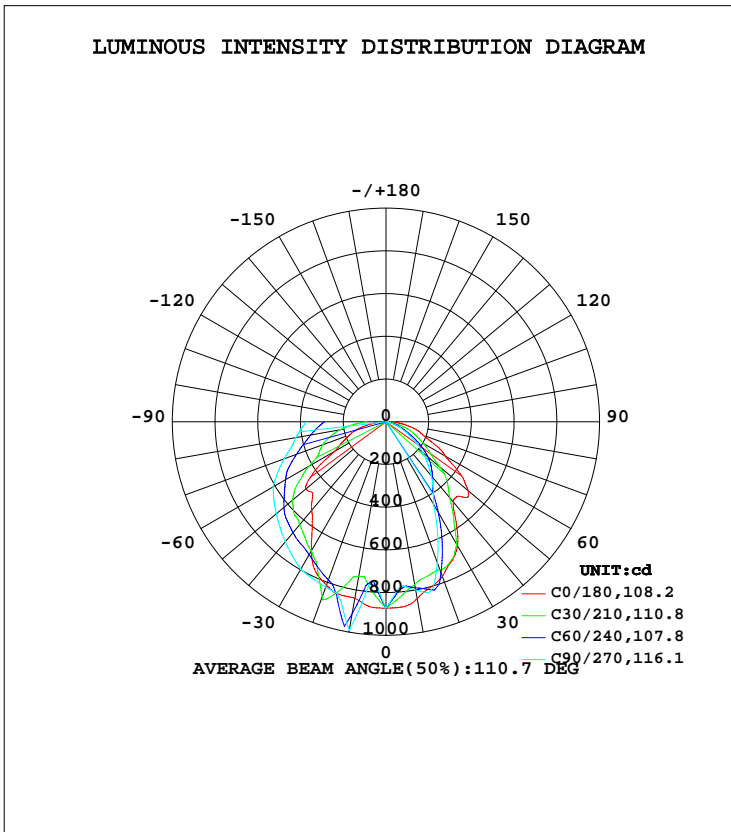


EVERFINE GONIOPHOTOMETERS SYSTEM TEST REPORT

LUMINAIRE PHOTOMETRIC TEST REPORT

Test:U:120.1V I:0.1741A P:20.29W PF:0.9701 Lamp Flux:2378.36x1 lm		
NAME: ASD-WLP05-20N30B-PC	TYPE:	WEIGHT:
SPEC.:	DIM.:	SERIAL No.:
MFR.: ASD Lighting Corp	SUR.:	Shielding Angle:

DATA OF LAMP		PHOTOMETRIC DATA Eff: 117.22 lm/W			
MODEL	ASD-WLP05-20N30B-PC	I <sub>max</sub> (cd)	991.4	S/MH(C0/180)	1.19
NOMINAL POWER(W)	20	LOR(%)	100.0	S/MH(C90/270)	1.36
RATED VOLTAGE(V)	120	TOTAL FLUX(lm)	2378.4	η UP, DN(C0-180)	0.0,33.7
NOMINAL FLUX(lm)	2378.36	CIE CLASS	DIRECT	η UP, DN(C180-360)	0.0,66.3
LAMPS INSIDE	1	η up(%)	0.0	CIBSE SHR NOM	1.25
TEST VOLTAGE(V)	120	η down(%)	100.0	CIBSE SHR MAX	1.25



C Range: 0 - 360DEG  
 C Interval: 5.0DEG  
 Test Speed: HIGH  
 Temperature:25DEG  
 Operators:  
 Test Date:2017-03-06

γ Range: 0 - 90DEG  
 γ Interval: 0.5DEG  
 Test System:EVERFINE GO-2000B\_V1 SYSTEM V2.0.350  
 Humidity:65.0%  
 Test Distance:7.850m [K=1.0000]  
 Remarks:

EVERFINE GONIOPHOTOMETERS SYSTEM TEST REPORT

ZONAL FLUX DIAGRAM

ZONAL FLUX DIAGRAM:

γ	C0	C45	C90	C135	C180	C225	C270	C315	γ	Φ zone	Φ total	%lum, lamp
5	870.2	798.7	779.3	792.6	869.5	759.8	756.9	759.5	0- 5	19.54	19.54	0.82,0.82
10	841.1	776.8	799.7	754.7	839.3	813.2	991.4	825.0	5- 10	57.23	76.77	3.23,3.23
15	803.6	773.5	816.2	756.9	838.1	919.1	851.5	934.6	10- 15	97.08	173.9	7.31,7.31
20	770.5	781.1	702.3	766.5	814.5	785.9	824.1	808.0	15- 20	130.2	304.1	12.8,12.8
25	722.4	692.6	572.1	662.7	776.6	725.0	810.9	762.3	20- 25	155.2	459.2	19.3,19.3
30	670.1	569.6	441.9	551.0	699.1	697.0	797.6	736.2	25- 30	172.8	632.1	26.6,26.6
35	572.1	463.9	386.3	461.8	601.9	676.2	765.4	712.1	30- 35	184.5	816.6	34.3,34.3
40	489.9	386.6	330.7	392.8	541.6	656.8	733.3	694.2	35- 40	192.6	1009	42.4,42.4
45	494.9	338.4	275.7	325.8	485.3	625.6	701.3	664.5	40- 45	196.8	1206	50.7,50.7
50	503.4	269.9	225.4	258.6	492.7	575.1	670.7	613.5	45- 50	195.0	1401	58.9,58.9
55	422.6	204.8	175.7	190.7	414.4	532.4	640.4	544.7	50- 55	183.1	1584	66.6,66.6
60	318.5	166.5	126.1	154.8	277.6	470.4	610.0	481.0	55- 60	165.5	1750	73.6,73.6
65	249.3	128.7	89.25	117.2	222.8	428.3	559.0	445.1	60- 65	147.4	1897	79.8,79.8
70	185.5	89.41	52.41	76.42	183.7	384.4	507.9	409.4	65- 70	131.1	2028	85.3,85.3
75	149.7	53.26	18.87	45.38	140.8	336.9	459.1	361.0	70- 75	113.4	2141	90,90
80	99.35	22.67	11.79	17.04	86.73	293.9	428.2	313.5	75- 80	95.39	2237	94.1,94.1
85	55.42	13.90	8.012	11.55	43.17	246.8	399.6	263.6	80- 85	78.71	2316	97.4,97.4
90	1.667	5.222	4.233	5.480	1.550	197.4	371.1	218.8	85- 90	62.76	2378	100,100
95									90- 95			
100									95-100			
105									100-105			
110									105-110			
115									110-115			
120									115-120			
125									120-125			
130									125-130			
135									130-135			
140									135-140			
145									140-145			
150									145-150			
155									150-155			
160									155-160			
165									160-165			
170									165-170			
175									170-175			
180									175-180			
DEG	LUMINOUS INTENSITY:cd								UNIT:lm			

Conical surface Flux(90deg): 1206 lm

%lum = 50.7%  
%lamp = 50.7%

Conical surface Flux(120deg): 1749.6 lm

%lum = 73.6%  
%lamp = 73.6%

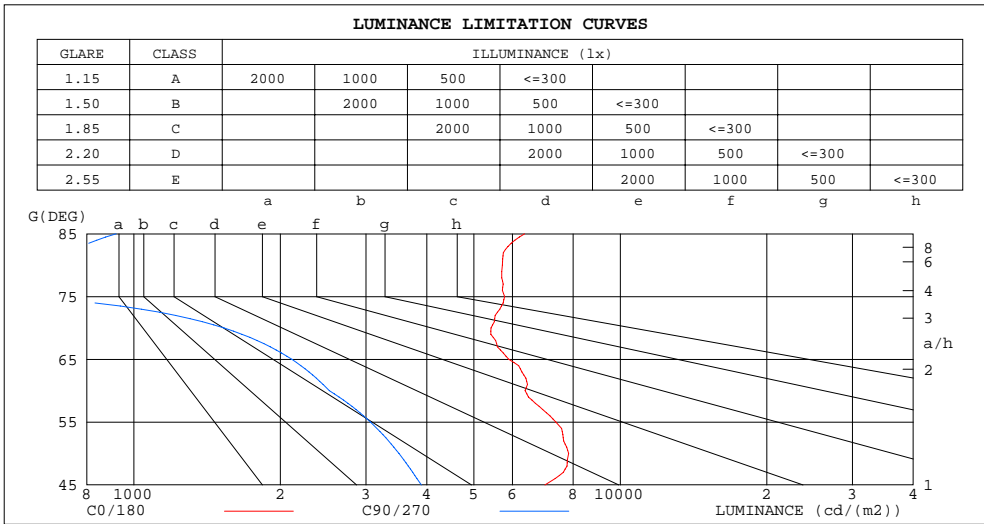
C Range: 0 - 360DEG  
C Interval: 5.0DEG  
Test Speed: HIGH  
Temperature:25DEG  
Operators:  
Test Date:2017-03-06

γ Range: 0 - 90DEG  
γ Interval: 0.5DEG  
Test System:EVERFINE GO-2000B\_V1 SYSTEM V2.0.350  
Humidity:65.0%  
Test Distance:7.850m [K=1.0000]  
Remarks:

EVERFINE GONIOPHOTOMETERS SYSTEM TEST REPORT

LUMINANCE LIMITATION CURVES

Test:U:120.1V I:0.1741A P:20.29W PF:0.9701 Lamp Flux:2378.36x1 lm		
NAME:	TYPE:	WEIGHT:
SPEC.:	DIM.:	SERIAL No.:
MFR.:	SUR.:	Shielding Angle:



LUMINANCE cd/(m2)		
G(DEG)	C0/180	C90/270
85	6358	919
80	5721	679
75	5784	729
70	5423	1532
65	5899	2112
60	6370	2522
55	7367	3064
50	7831	3507
45	6999	3898

C Range: 0 - 360DEG  
 C Interval: 5.0DEG  
 Test Speed: HIGH  
 Temperature: 25DEG  
 Operators:  
 Test Date: 2017-03-06

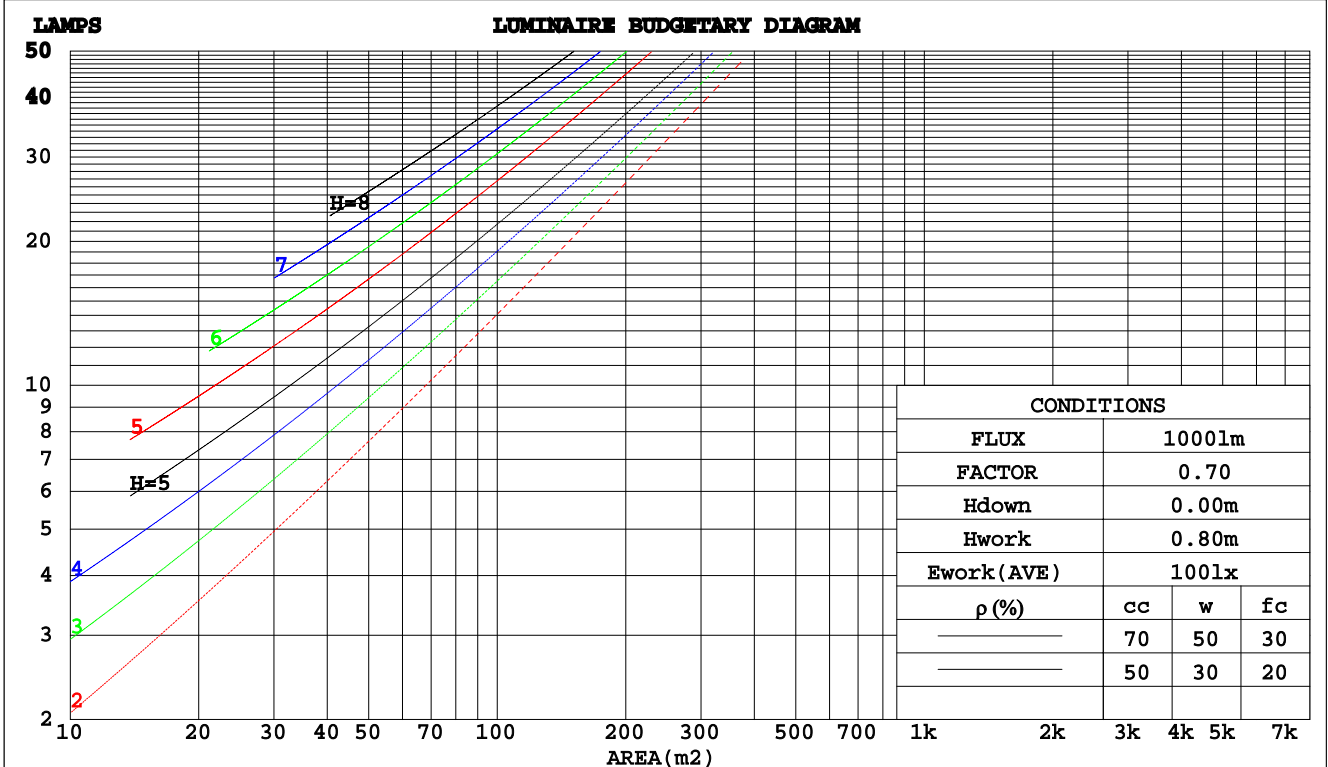
γ Range: 0 - 90DEG  
 γ Interval: 0.5DEG  
 Test System: EVERFINE GO-2000B\_V1 SYSTEM V2.0.350  
 Humidity: 65.0%  
 Test Distance: 7.850m [K=1.0000]  
 Remarks:

EVERFINE GONIOPHOTOMETERS SYSTEM TEST REPORT

CU AND LUMINAIRE BUDGETARY ESTIMATE DIAGRAM

Test:U:120.1V I:0.1741A P:20.29W PF:0.9701 Lamp Flux:2378.36x1 lm		
NAME:	TYPE:	WEIGHT:
SPEC.:	DIM.:	SERIAL No.:
MFR.:	SUR.:	Shielding Angle:

ρcc	80%			70%			50%			30%			10%			0
	50%	30%	10%	50%	30%	10%	50%	30%	10%	50%	30%	10%	50%	30%	10%	0
ρw																
ρfc																
RCR	RCR:Room Cavity Ratio															
	Coefficients of Utilization(CU)															
0.0	1.19	1.19	1.19	1.16	1.16	1.16	1.11	1.11	1.11	1.06	1.06	1.06	1.02	1.02	1.02	1.00
1.0	1.01	.96	.92	.99	.95	.90	.95	.91	.88	.91	.88	.85	.87	.85	.82	.80
2.0	.88	.80	.74	.86	.79	.73	.82	.76	.71	.79	.74	.70	.76	.72	.68	.66
3.0	.77	.68	.61	.75	.67	.61	.72	.65	.60	.69	.63	.59	.67	.62	.57	.55
4.0	.68	.59	.52	.67	.58	.51	.64	.57	.51	.62	.55	.50	.60	.54	.49	.47
5.0	.61	.52	.45	.60	.51	.44	.58	.50	.44	.56	.49	.43	.54	.48	.43	.41
6.0	.55	.46	.39	.54	.45	.39	.52	.44	.38	.50	.43	.38	.49	.43	.38	.36
7.0	.50	.41	.35	.49	.40	.34	.47	.40	.34	.46	.39	.34	.45	.38	.34	.32
8.0	.46	.37	.31	.45	.37	.31	.43	.36	.31	.42	.35	.30	.41	.35	.30	.28
9.0	.42	.33	.28	.41	.33	.28	.40	.33	.28	.39	.32	.27	.38	.32	.27	.25
10.0	.39	.31	.25	.38	.30	.25	.37	.30	.25	.36	.30	.25	.35	.29	.25	.23



C Range: 0 - 360DEG  
 C Interval: 5.0DEG  
 Test Speed: HIGH  
 Temperature:25DEG  
 Operators:  
 Test Date:2017-03-06

γ Range: 0 - 90DEG  
 γ Interval: 0.5DEG  
 Test System:EVERFINE GO-2000B\_V1 SYSTEM V2.0.350  
 Humidity:65.0%  
 Test Distance:7.850m [K=1.0000]  
 Remarks:

EVERFINE GONIOPHOTOMETERS SYSTEM TEST REPORT

WEC AND CCEC

Test:U:120.1V I:0.1741A P:20.29W PF:0.9701 Lamp Flux:2378.36x1 lm		
NAME:	TYPE:	WEIGHT:
SPEC.:	DIM.:	SERIAL No.:
MFR.:	SUR.:	Shielding Angle:

ρcc	80%			70%			50%			30%			10%			0
ρw	50%	30%	10%	50%	30%	10%	50%	30%	10%	50%	30%	10%	50%	30%	10%	0
ρfc	20%			20%			20%			20%			20%			0
RCR	RCR:Room Cavity Ratio						Wall Exitance Coefficients(WEC)									
0.0																
1.0	.358	.203	.064	.350	.200	.064	.337	.193	.062	.325	.187	.060	.313	.181	.059	
2.0	.317	.174	.053	.311	.171	.053	.299	.166	.052	.288	.162	.051	.278	.157	.050	
3.0	.286	.152	.046	.280	.150	.045	.270	.146	.044	.260	.142	.044	.251	.139	.043	
4.0	.260	.135	.040	.255	.133	.039	.245	.130	.039	.237	.127	.038	.229	.124	.038	
5.0	.238	.121	.035	.233	.120	.035	.225	.117	.034	.217	.115	.034	.210	.112	.034	
6.0	.219	.110	.031	.215	.109	.031	.208	.106	.031	.201	.104	.031	.194	.102	.030	
7.0	.203	.100	.028	.199	.099	.028	.193	.097	.028	.186	.096	.028	.181	.094	.028	
8.0	.189	.092	.026	.185	.091	.026	.180	.090	.026	.174	.088	.025	.169	.087	.025	
9.0	.176	.085	.024	.173	.085	.024	.168	.083	.024	.163	.082	.023	.159	.081	.023	
10.0	.165	.079	.022	.163	.079	.022	.158	.077	.022	.154	.076	.022	.149	.075	.022	

ρcc	80%			70%			50%			30%			10%			0
ρw	50%	30%	10%	50%	30%	10%	50%	30%	10%	50%	30%	10%	50%	30%	10%	0
ρfc	20%			20%			20%			20%			20%			0
RCR	RCR:Room Cavity Ratio						Ceiling Cavity Exitance Coefficients(CCEC)									
0.0	.190	.190	.190	.163	.163	.163	.111	.111	.111	.064	.064	.064	.020	.020	.020	
1.0	.184	.156	.131	.157	.134	.112	.107	.092	.078	.062	.053	.045	.020	.017	.015	
2.0	.176	.132	.095	.150	.113	.082	.103	.078	.057	.059	.046	.034	.019	.015	.011	
3.0	.168	.114	.072	.144	.099	.062	.099	.069	.044	.057	.040	.026	.018	.013	.008	
4.0	.159	.101	.057	.137	.087	.049	.094	.061	.035	.054	.036	.021	.018	.012	.007	
5.0	.152	.091	.046	.130	.079	.040	.090	.055	.028	.052	.032	.017	.017	.011	.006	
6.0	.144	.083	.038	.124	.071	.033	.085	.050	.024	.050	.029	.014	.016	.010	.005	
7.0	.137	.076	.033	.118	.066	.028	.081	.046	.020	.047	.027	.012	.015	.009	.004	
8.0	.130	.070	.028	.112	.061	.025	.078	.042	.018	.045	.025	.010	.015	.008	.003	
9.0	.124	.065	.025	.107	.056	.022	.074	.040	.015	.043	.023	.009	.014	.008	.003	
10.0	.118	.060	.022	.102	.053	.019	.071	.037	.014	.041	.022	.008	.013	.007	.003	

C Range: 0 - 360DEG  
 C Interval: 5.0DEG  
 Test Speed: HIGH  
 Temperature:25DEG  
 Operators:  
 Test Date:2017-03-06

γ Range: 0 - 90DEG  
 γ Interval: 0.5DEG  
 Test System:EVERFINE GO-2000B\_V1 SYSTEM V2.0.350  
 Humidity:65.0%  
 Test Distance:7.850m [K=1.0000]  
 Remarks:

**EVERFINE GONIOPHOTOMETERS SYSTEM TEST REPORT**

**UGR(Unified Glare Rating) Table**

Test:U:120.1V I:0.1741A P:20.29W PF:0.9701 Lamp Flux:2378.36x1 lm										
NAME:				TYPE:			WEIGHT:			
SPEC.:				DIM.:			SERIAL No.:			
MFR.:				SUR.:			Shielding Angle:			
<b>ceiling/cavity</b>	<b>0.7</b>	<b>0.7</b>	<b>0.5</b>	<b>0.5</b>	<b>0.3</b>	<b>0.7</b>	<b>0.7</b>	<b>0.5</b>	<b>0.5</b>	<b>0.3</b>
<b>walls</b>	<b>0.5</b>	<b>0.3</b>	<b>0.5</b>	<b>0.3</b>	<b>0.3</b>	<b>0.5</b>	<b>0.3</b>	<b>0.5</b>	<b>0.3</b>	<b>0.3</b>
<b>working plane</b>	<b>0.2</b>	<b>0.2</b>	<b>0.2</b>	<b>0.2</b>	<b>0.2</b>	<b>0.2</b>	<b>0.2</b>	<b>0.2</b>	<b>0.2</b>	<b>0.2</b>
<b>Room dimensions</b>	<b>Viewed crosswise</b>					<b>Viewed endwise</b>				
<b>x = 2H y = 2H</b>	<b>17.6</b>	<b>19.2</b>	<b>17.9</b>	<b>19.4</b>	<b>19.6</b>	<b>14.2</b>	<b>15.7</b>	<b>14.4</b>	<b>15.9</b>	<b>16.2</b>
<b>3H</b>	<b>19.2</b>	<b>20.6</b>	<b>19.5</b>	<b>20.9</b>	<b>21.1</b>	<b>14.8</b>	<b>16.2</b>	<b>15.1</b>	<b>16.4</b>	<b>16.7</b>
<b>4H</b>	<b>19.9</b>	<b>21.3</b>	<b>20.2</b>	<b>21.5</b>	<b>21.8</b>	<b>14.8</b>	<b>16.2</b>	<b>15.1</b>	<b>16.4</b>	<b>16.7</b>
<b>6H</b>	<b>20.5</b>	<b>21.8</b>	<b>20.8</b>	<b>22.1</b>	<b>22.3</b>	<b>14.7</b>	<b>16.0</b>	<b>15.1</b>	<b>16.3</b>	<b>16.6</b>
<b>8H</b>	<b>20.7</b>	<b>22.0</b>	<b>21.0</b>	<b>22.2</b>	<b>22.5</b>	<b>14.7</b>	<b>16.0</b>	<b>15.1</b>	<b>16.3</b>	<b>16.6</b>
<b>12H</b>	<b>20.9</b>	<b>22.1</b>	<b>21.2</b>	<b>22.4</b>	<b>22.7</b>	<b>14.7</b>	<b>15.9</b>	<b>15.0</b>	<b>16.2</b>	<b>16.5</b>
<b>4H 2H</b>	<b>17.7</b>	<b>19.1</b>	<b>18.0</b>	<b>19.4</b>	<b>19.6</b>	<b>14.8</b>	<b>16.2</b>	<b>15.1</b>	<b>16.5</b>	<b>16.7</b>
<b>3H</b>	<b>19.4</b>	<b>20.6</b>	<b>19.8</b>	<b>20.9</b>	<b>21.3</b>	<b>15.5</b>	<b>16.8</b>	<b>15.9</b>	<b>17.1</b>	<b>17.4</b>
<b>4H</b>	<b>20.2</b>	<b>21.3</b>	<b>20.6</b>	<b>21.7</b>	<b>22.0</b>	<b>15.6</b>	<b>16.7</b>	<b>16.0</b>	<b>17.1</b>	<b>17.4</b>
<b>6H</b>	<b>20.9</b>	<b>21.9</b>	<b>21.3</b>	<b>22.3</b>	<b>22.6</b>	<b>15.6</b>	<b>16.6</b>	<b>16.0</b>	<b>17.0</b>	<b>17.3</b>
<b>8H</b>	<b>21.2</b>	<b>22.1</b>	<b>21.6</b>	<b>22.5</b>	<b>22.9</b>	<b>15.6</b>	<b>16.6</b>	<b>16.0</b>	<b>16.9</b>	<b>17.3</b>
<b>12H</b>	<b>21.4</b>	<b>22.3</b>	<b>21.8</b>	<b>22.7</b>	<b>23.1</b>	<b>15.6</b>	<b>16.5</b>	<b>16.1</b>	<b>16.9</b>	<b>17.3</b>
<b>8H 4H</b>	<b>20.2</b>	<b>21.1</b>	<b>20.6</b>	<b>21.5</b>	<b>21.9</b>	<b>15.9</b>	<b>16.8</b>	<b>16.3</b>	<b>17.2</b>	<b>17.6</b>
<b>6H</b>	<b>20.9</b>	<b>21.7</b>	<b>21.4</b>	<b>22.1</b>	<b>22.6</b>	<b>16.0</b>	<b>16.8</b>	<b>16.4</b>	<b>17.2</b>	<b>17.6</b>
<b>8H</b>	<b>21.2</b>	<b>22.0</b>	<b>21.7</b>	<b>22.4</b>	<b>22.8</b>	<b>16.0</b>	<b>16.7</b>	<b>16.5</b>	<b>17.2</b>	<b>17.6</b>
<b>12H</b>	<b>21.5</b>	<b>22.2</b>	<b>22.0</b>	<b>22.6</b>	<b>23.1</b>	<b>16.1</b>	<b>16.7</b>	<b>16.6</b>	<b>17.2</b>	<b>17.6</b>
<b>12H 4H</b>	<b>20.1</b>	<b>21.0</b>	<b>20.6</b>	<b>21.4</b>	<b>21.8</b>	<b>15.9</b>	<b>16.8</b>	<b>16.3</b>	<b>17.2</b>	<b>17.6</b>
<b>6H</b>	<b>20.9</b>	<b>21.6</b>	<b>21.4</b>	<b>22.0</b>	<b>22.5</b>	<b>16.0</b>	<b>16.7</b>	<b>16.5</b>	<b>17.2</b>	<b>17.6</b>
<b>8H</b>	<b>21.2</b>	<b>21.9</b>	<b>21.7</b>	<b>22.3</b>	<b>22.8</b>	<b>16.1</b>	<b>16.7</b>	<b>16.6</b>	<b>17.2</b>	<b>17.7</b>
<b>Variations with the observer position at spacings:</b>										
<b>S = 1.0H</b>	<b>+ 0.2 / - 0.2</b>					<b>+ 0.4 / - 0.5</b>				
<b>1.5H</b>	<b>+ 0.6 / - 0.7</b>					<b>+ 0.3 / - 0.5</b>				
<b>2.0H</b>	<b>+ 1.4 / - 1.2</b>					<b>+ 0.5 / - 1.0</b>				

CIE Pub.117 Corrected 2378 lm Total Lamp Luminous Flux.(8log(F/F0) = 3.0)

C Range: 0 - 360DEG  
 C Interval: 5.0DEG  
 Test Speed: HIGH  
 Temperature:25DEG  
 Operators:  
 Test Date:2017-03-06

γ Range: 0 - 90DEG  
 γ Interval: 0.5DEG  
 Test System:EVERFINE GO-2000B\_V1 SYSTEM V2.0.350  
 Humidity:65.0%  
 Test Distance:7.850m [K=1.0000]  
 Remarks:

**EVERFINE GONIOPHOTOMETERS SYSTEM TEST REPORT**

**UTILIZATION FACTORS TABLE**

Test:U:120.1V I:0.1741A P:20.29W PF:0.9701 Lamp Flux:2378.36x1 lm		
NAME:	TYPE:	WEIGHT:
SPEC.:	DIM.:	SERIAL No.:
MFR.:	SUR.:	Shielding Angle:

REFLECTANCE										
Ceiling	0.8	0.8	0.8	0.7	0.7	0.7	0.5	0.5	0.5	0
Walls	0.7	0.5	0.3	0.7	0.5	0.3	0.7	0.5	0.3	0
Working plane	0.2	0.2	0.2	0.2	0.2	0.2	0.2	0.2	0.2	0
ROOM INDEX	UTILIZATION FACTORS(PERCENT) $k(RI) \times RCR = 5$									
k = 0.60	57	45	38	56	44	38	55	44	37	31
0.80	66	54	47	65	54	47	63	53	46	39
1.00	74	63	55	73	62	55	71	64	54	47
1.25	81	70	62	80	69	62	77	68	61	54
1.50	86	75	68	84	75	67	81	73	66	58
2.00	93	83	76	91	82	76	87	80	74	66
2.50	97	88	81	95	87	81	91	84	79	70
3.00	100	92	86	98	91	85	94	88	83	74
4.00	104	98	92	102	96	91	97	92	88	79
5.00	107	101	96	104	99	95	100	95	92	82
ROOM INDEX	UF(total)									Direct
According to DIN EN 13032-2 2004			Suspended				SHRNOM = 1.25			

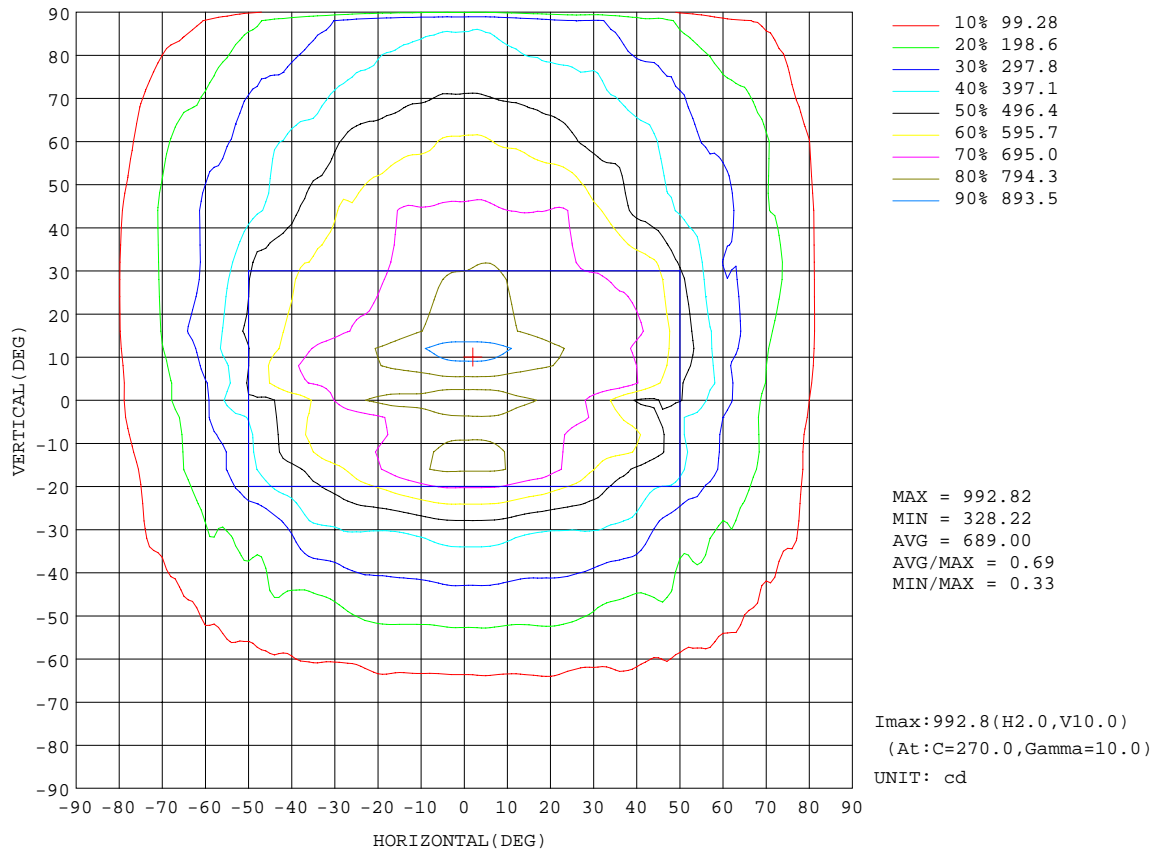
C Range: 0 - 360DEG  
 C Interval: 5.0DEG  
 Test Speed: HIGH  
 Temperature:25DEG  
 Operators:  
 Test Date:2017-03-06

$\gamma$  Range: 0 - 90DEG  
 $\gamma$  Interval: 0.5DEG  
 Test System:EVERFINE GO-2000B\_V1 SYSTEM V2.0.350  
 Humidity:65.0%  
 Test Distance:7.850m [K=1.0000]  
 Remarks:

EVERFINE GONIOPHOTOMETERS SYSTEM TEST REPORT

ISOCANDELA DIAGRAM

Test:U:120.1V I:0.1741A P:20.29W PF:0.9701 Lamp Flux:2378.36x1 lm		
NAME:	TYPE:	WEIGHT:
SPEC.:	DIM.:	SERIAL No.:
MFR.:	SUR.:	Shielding Angle:



C Range: 0 - 360DEG  
 C Interval: 5.0DEG  
 Test Speed: HIGH  
 Temperature:25DEG  
 Operators:  
 Test Date:2017-03-06

γ Range: 0 - 90DEG  
 γ Interval: 0.5DEG  
 Test System:EVERFINE GO-2000B\_V1 SYSTEM V2.0.350  
 Humidity:65.0%  
 Test Distance:7.850m [K=1.0000]  
 Remarks:

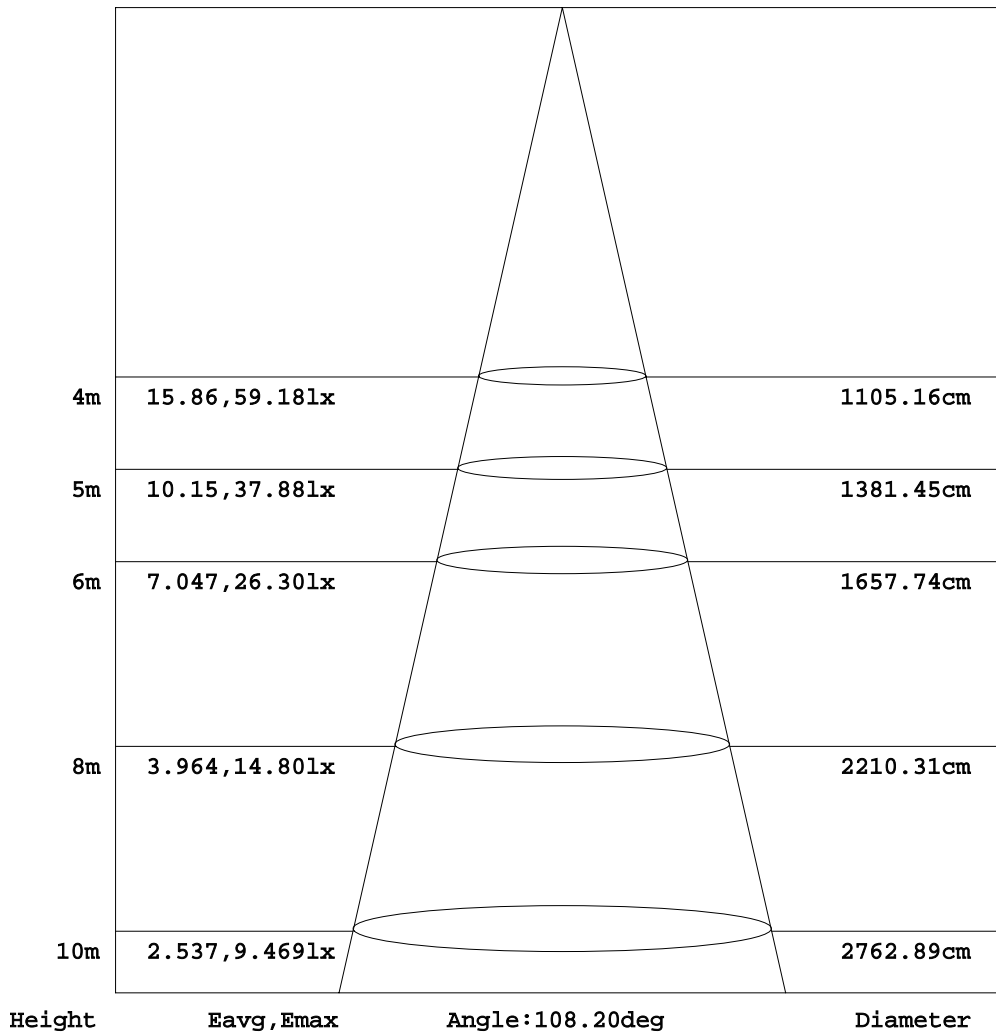


**EVERFINE GONIOPHOTOMETERS SYSTEM TEST REPORT**

**AAI Figure**

Test:U:120.1V I:0.1741A P:20.29W PF:0.9701 Lamp Flux:2378.36x1 lm		
NAME:	TYPE:	WEIGHT:
SPEC.:	DIM.:	SERIAL No.:
MFR.:	SUR.:	Shielding Angle:

Flux out:1566 lm



Note: The Curves indicate the illuminated area and the average illumination when the luminaire is at different distance.

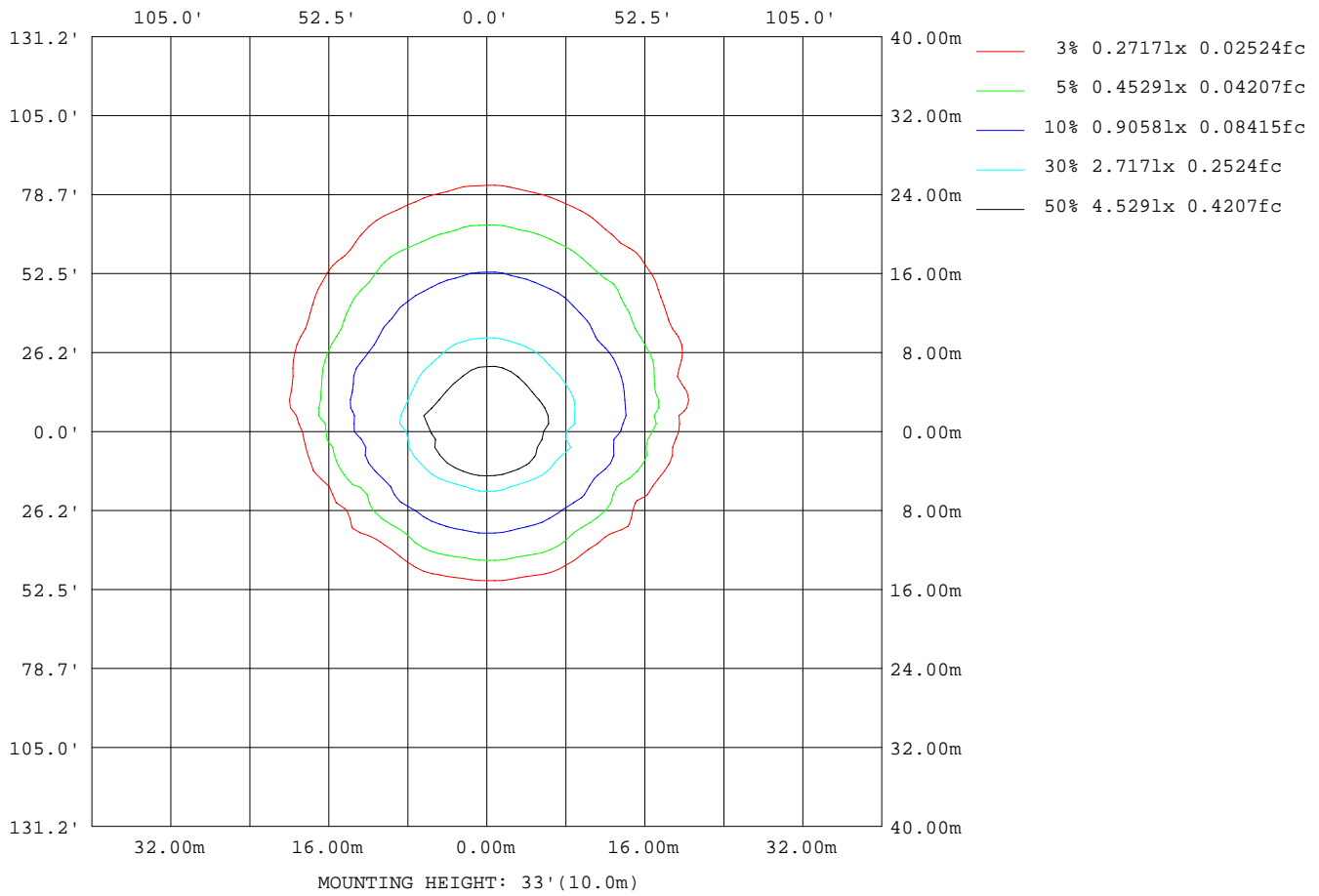
C Range: 0 - 360DEG  
 C Interval: 5.0DEG  
 Test Speed: HIGH  
 Temperature: 25DEG  
 Operators:  
 Test Date: 2017-03-06

γ Range: 0 - 90DEG  
 γ Interval: 0.5DEG  
 Test System: EVERFINE GO-2000B\_V1 SYSTEM V2.0.350  
 Humidity: 65.0%  
 Test Distance: 7.850m [K=1.0000]  
 Remarks:

EVERFINE GONIOPHOTOMETERS SYSTEM TEST REPORT

ISOLUX DIAGRAM

Test:U:120.1V I:0.1741A P:20.29W PF:0.9701 Lamp Flux:2378.36x1 lm		
NAME:	TYPE:	WEIGHT:
SPEC.:	DIM.:	SERIAL No.:
MFR.:	SUR.:	Shielding Angle:



C Range: 0 - 360DEG  
 C Interval: 5.0DEG  
 Test Speed: HIGH  
 Temperature: 25DEG  
 Operators:  
 Test Date: 2017-03-06

$\gamma$  Range: 0 - 90DEG  
 $\gamma$  Interval: 0.5DEG  
 Test System: EVERFINE GO-2000B\_V1 SYSTEM V2.0.350  
 Humidity: 65.0%  
 Test Distance: 7.850m [K=1.0000]  
 Remarks:

EVERFINE GONIOPHOTOMETERS SYSTEM TEST REPORT

LED Avg.L Report

Test:U:120.1V I:0.1741A P:20.29W PF:0.9701 Lamp Flux:2378.36x1 lm		
NAME:	TYPE:	WEIGHT:
SPEC.:	DIM.:	SERIAL No.:
MFR.:	SUR.:	Shielding Angle:

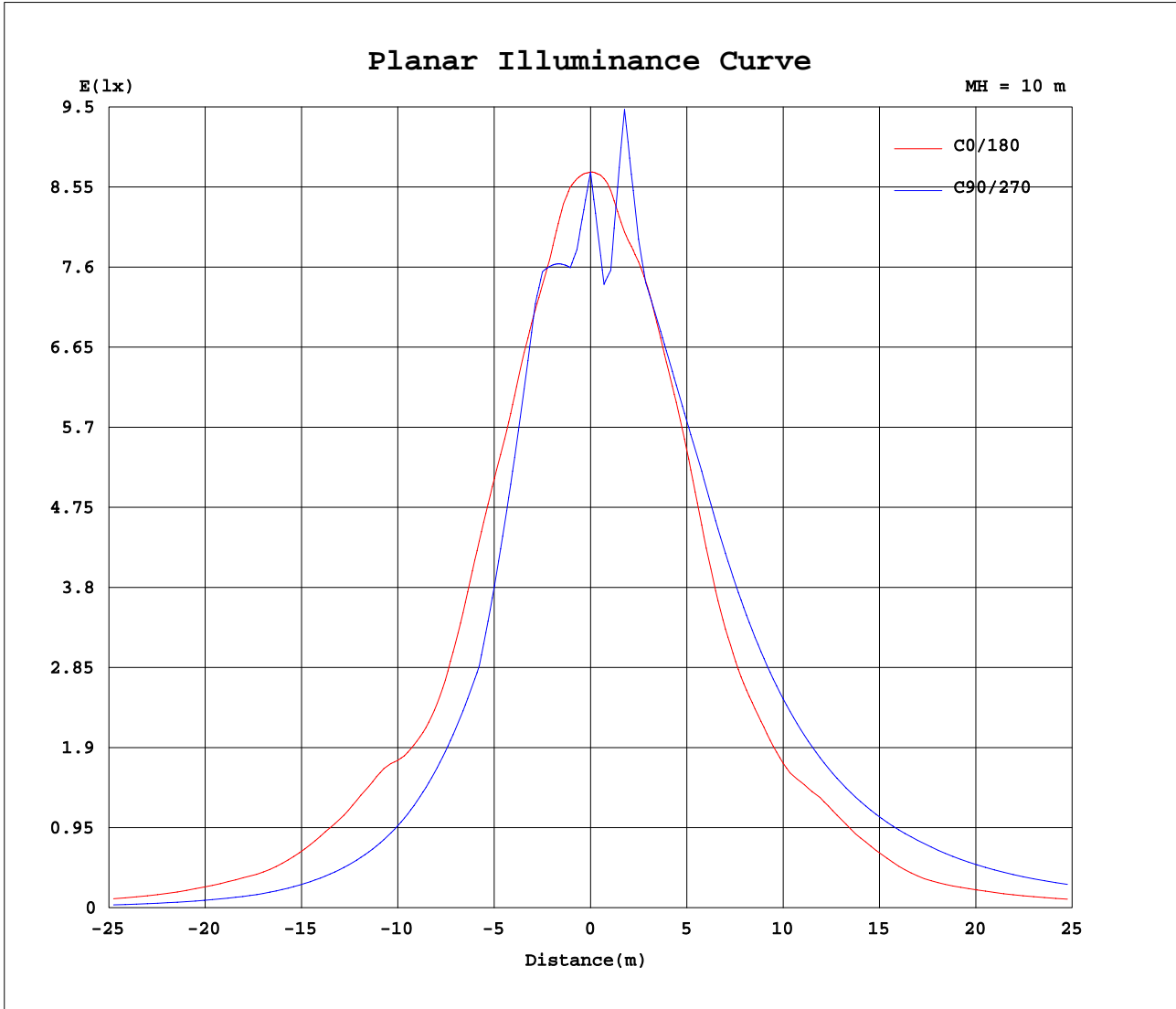
AvgL	cd/m2
L_0~180(65)av	5586
L_0~180(75)av	5612
L_0~180(85)av	5656
L_90~270(65)av	7669
L_90~270(75)av	9233
L_90~270(85)av	23387
L_45(65)av	6622
L_45(75)av	7695
L_45(85)av	15370

Standard: GB/T 29293-2012

C Range: 0 - 360DEG  
 C Interval: 5.0DEG  
 Test Speed: HIGH  
 Temperature:25DEG  
 Operators:  
 Test Date:2017-03-06

γ Range: 0 - 90DEG  
 γ Interval: 0.5DEG  
 Test System:EVERFINE GO-2000B\_V1 SYSTEM V2.0.350  
 Humidity:65.0%  
 Test Distance:7.850m [K=1.0000]  
 Remarks:

Planar Illuminance Curve



C Range: 0 - 360DEG  
 C Interval: 5.0DEG  
 Test Speed: HIGH  
 Temperature: 25DEG  
 Operators:  
 Test Date: 2017-03-06

$\gamma$  Range: 0 - 90DEG  
 $\gamma$  Interval: 0.5DEG  
 Test System: EVERFINE GO-2000B\_V1 SYSTEM V2.0.350  
 Humidity: 65.0%  
 Test Distance: 7.850m [K=1.0000]  
 Remarks:

EVERFINE GONIOPHOTOMETERS SYSTEM TEST REPORT

LUMINOUS DISTRIBUTION INTENSITY DATA

Test:U:120.1V I:0.1741A P:20.29W PF:0.9701 Lamp Flux:2378.36x1 lm		
NAME:	TYPE:	WEIGHT:
SPEC.:	DIM.:	SERIAL No.:
MFR.:	SUR.:	Shielding Angle:

Table--1

UNIT: cd

C (DEG) \ γ (DEG)	0	5	10	15	20	25	30	35	40	45	50	55	60	65	70	75	80	85	90
0	873	873	873	873	873	873	873	873	873	873	873	873	873	873	873	873	873	873	873
5	870	861	853	844	836	828	820	812	805	799	792	788	786	784	783	781	780	780	779
10	841	827	813	800	787	777	774	770	772	777	781	785	789	793	795	797	798	799	800
15	804	787	771	755	748	745	749	753	760	774	789	803	814	821	824	821	818	817	816
20	770	757	745	737	733	734	737	752	770	781	779	768	753	742	730	718	710	704	702
25	722	720	714	699	685	694	719	731	722	693	664	640	622	610	600	590	581	574	572
30	670	682	685	661	642	657	660	630	599	570	542	513	490	476	467	459	451	444	442
35	572	613	648	661	597	573	553	529	500	464	427	391	382	381	385	389	389	387	386
40	490	554	629	593	510	485	466	449	421	387	364	351	340	332	330	332	334	332	331
45	495	505	563	481	440	424	408	385	358	338	322	310	300	290	280	277	278	277	276
50	503	400	452	437	367	328	329	321	293	270	262	262	257	247	235	227	228	227	225
55	423	355	362	325	274	236	250	245	224	205	198	205	204	200	189	179	178	178	176
60	318	291	296	255	231	197	201	210	176	166	157	152	149	149	142	132	128	129	126
65	249	237	224	196	179	179	156	159	140	129	124	108	102	104	102	94.7	91.0	91.5	89.2
70	185	189	169	152	141	135	118	103	97.8	89.4	88.2	74.4	68.5	66.4	65.5	58.9	54.9	54.3	52.4
75	150	135	120	96.8	91.3	85.2	76.3	64.0	62.5	53.3	50.1	40.4	35.8	31.1	28.9	24.1	21.4	20.3	18.9
80	99.3	83.6	70.0	57.5	54.2	46.8	36.9	31.2	26.5	22.7	22.2	19.0	18.7	17.4	17.2	14.6	13.3	12.7	11.8
85	55.4	33.1	29.9	23.5	20.3	17.9	16.3	15.6	14.7	13.9	13.9	12.3	11.8	11.2	11.0	9.68	9.01	8.53	8.01
90	1.67	2.98	9.64	11.0	10.5	8.83	7.28	6.00	5.45	5.22	5.16	5.10	5.01	4.90	4.79	4.72	4.65	4.37	4.23

C Range: 0 - 360DEG	γ Range: 0 - 90DEG
C Interval: 5.0DEG	γ Interval: 0.5DEG
Test Speed: HIGH	Test System: EVERFINE GO-2000B_V1 SYSTEM V2.0.350
Temperature: 25DEG	Humidity: 65.0%
Operators:	Test Distance: 7.850m [K=1.0000]
Test Date: 2017-03-06	Remarks:



EVERFINE GONIOPHOTOMETERS SYSTEM TEST REPORT

LUMINOUS DISTRIBUTION INTENSITY DATA

Test:U:120.1V I:0.1741A P:20.29W PF:0.9701 Lamp Flux:2378.36x1 lm		
NAME:	TYPE:	WEIGHT:
SPEC.:	DIM.:	SERIAL No.:
MFR.:	SUR.:	Shielding Angle:

Table--2

UNIT: cd

C(DEG) γ (DEG)	95	100	105	110	115	120	125	130	135	140	145	150	155	160	165	170	175	180	185	
0	873	873	873	873	873	873	873	873	873	873	873	873	873	873	873	873	873	873	873	873
5	779	779	780	780	781	782	783	787	793	799	806	814	822	831	840	850	859	869	856	856
10	800	799	797	793	788	781	772	764	755	746	740	743	747	760	778	798	818	839	813	813
15	817	820	823	824	816	803	788	772	757	743	732	720	708	708	720	758	798	838	798	798
20	705	711	718	724	733	744	758	766	766	755	736	719	699	678	672	698	755	815	772	772
25	574	579	584	589	598	611	627	645	663	683	694	689	678	667	645	649	706	777	753	753
30	443	446	449	454	464	479	500	524	551	578	603	621	636	671	670	626	646	699	718	718
35	387	384	378	375	373	377	391	426	462	489	511	531	552	595	656	615	598	602	689	689
40	331	327	324	325	329	337	351	370	393	413	439	462	482	500	537	555	555	542	677	677
45	277	272	274	281	287	296	307	317	326	352	382	385	397	442	492	483	471	485	612	612
50	226	223	226	235	242	249	247	244	259	283	287	273	297	343	389	394	385	493	508	508
55	176	174	179	186	193	194	188	184	191	212	227	217	218	271	305	328	328	414	392	392
60	126	127	130	138	142	139	140	146	155	175	193	178	198	197	230	255	269	278	338	338
65	89.2	90.0	92.3	98.7	96.9	95.2	101	111	117	138	132	150	165	176	185	199	206	223	253	253
70	52.9	54.2	56.4	62.3	61.0	63.2	68.9	76.7	76.4	85.4	90.2	111	112	119	136	149	157	184	203	203
75	19.6	20.8	22.1	25.8	26.9	31.5	35.6	42.3	45.4	52.7	56.3	57.2	70.3	76.0	85.9	106	110	141	166	166
80	12.3	12.9	13.3	15.0	14.5	15.8	15.4	16.9	17.0	19.8	25.1	29.6	33.3	36.7	40.0	53.4	63.1	86.7	115	115
85	8.34	8.79	9.04	10.0	9.79	10.5	10.4	10.8	11.6	11.7	12.4	13.4	13.3	13.9	17.1	22.9	24.9	43.2	59.3	59.3
90	4.39	4.65	4.81	4.94	5.05	5.11	5.11	5.16	5.48	6.06	6.84	8.91	9.52	11.8	12.8	11.4	2.88	1.55	28.6	28.6

C Range: 0 - 360DEG  
 C Interval: 5.0DEG  
 Test Speed: HIGH  
 Temperature:25DEG  
 Operators:  
 Test Date:2017-03-06

γ Range: 0 - 90DEG  
 γ Interval: 0.5DEG  
 Test System:EVERFINE GO-2000B\_V1 SYSTEM V2.0.350  
 Humidity:65.0%  
 Test Distance:7.850m [K=1.0000]  
 Remarks:



**EVERFINE GONIOPHOTOMETERS SYSTEM TEST REPORT**

---

**LUMINOUS DISTRIBUTION INTENSITY DATA**

Test:U:120.1V I:0.1741A P:20.29W PF:0.9701 Lamp Flux:2378.36x1 lm		
NAME:	TYPE:	WEIGHT:
SPEC.:	DIM.:	SERIAL No.:
MFR.:	SUR.:	Shielding Angle:

Table--3

UNIT: cd

C (DEG) γ (DEG)	190	195	200	205	210	215	220	225	230	235	240	245	250	255	260	265	270	275	280
0	873	873	873	873	873	873	873	873	873	873	873	873	873	873	873	873	873	873	873
5	842	829	816	803	791	780	770	760	751	747	750	752	754	755	756	757	757	757	756
10	788	762	738	725	735	746	776	813	849	881	910	935	955	971	982	989	991	990	984
15	758	719	727	755	810	866	922	919	901	885	873	864	859	858	855	853	851	852	855
20	729	725	766	828	873	838	807	786	778	780	788	798	809	819	824	824	824	825	826
25	737	760	808	805	760	728	719	725	733	742	753	766	782	797	807	811	811	814	817
30	745	790	790	729	699	698	695	697	703	711	719	732	751	773	790	797	798	804	808
35	738	761	686	651	662	673	677	676	678	687	697	708	725	743	759	765	765	772	775
40	683	653	622	622	629	642	654	657	656	663	678	697	710	718	728	733	733	738	738
45	595	586	593	597	609	610	615	626	632	636	655	679	702	701	699	702	701	705	700
50	511	529	553	574	570	563	566	575	600	603	624	640	665	665	662	670	671	673	663
55	455	470	488	534	504	490	501	532	540	577	581	593	610	621	621	639	640	641	626
60	348	363	391	406	415	407	437	470	486	518	543	553	557	574	579	606	610	609	590
65	297	301	332	346	346	371	403	428	434	460	501	511	514	528	534	557	559	557	542
70	229	248	288	315	314	340	378	384	398	412	446	464	473	483	491	507	508	504	493
75	189	233	250	261	271	301	328	337	355	373	398	417	431	440	449	460	459	455	445
80	139	166	193	201	219	256	286	294	310	335	358	381	397	409	419	429	428	425	412
85	77.0	98.3	122	131	154	188	225	247	269	296	322	349	367	382	391	400	400	399	382
90	36.8	46.8	60.0	71.3	89.9	120	162	197	229	258	288	317	338	354	363	370	371	373	351

C Range: 0 - 360DEG C Interval: 5.0DEG Test Speed: HIGH Temperature: 25DEG Operators: Test Date: 2017-03-06	γ Range: 0 - 90DEG γ Interval: 0.5DEG Test System: EVERFINE GO-2000B_V1 SYSTEM V2.0.350 Humidity: 65.0% Test Distance: 7.850m [K=1.0000] Remarks:
--	--

EVERFINE GONIOPHOTOMETERS SYSTEM TEST REPORT

LUMINOUS DISTRIBUTION INTENSITY DATA

Test:U:120.1V I:0.1741A P:20.29W PF:0.9701 Lamp Flux:2378.36x1 lm		
NAME:	TYPE:	WEIGHT:
SPEC.:	DIM.:	SERIAL No.:
MFR.:	SUR.:	Shielding Angle:

Table--4

UNIT: cd

C (DEG) γ (DEG)	285	290	295	300	305	310	315	320	325	330	335	340	345	350	355				
0	873	873	873	873	873	873	873	873	873	873	873	873	873	873	873				
5	755	753	751	749	746	750	760	770	780	792	804	816	829	843	856				
10	974	959	940	917	890	859	825	788	758	748	736	747	769	792	816				
15	858	862	872	885	899	916	935	938	880	821	761	729	715	745	774				
20	825	823	816	808	800	799	808	828	854	882	835	772	727	720	746				
25	816	809	798	787	778	769	762	756	762	784	815	805	756	728	723				
30	805	793	780	766	755	746	736	731	734	741	755	770	767	762	727				
35	769	761	752	743	733	718	712	715	721	729	741	750	735	774	736				
40	730	726	722	718	710	699	694	701	709	718	727	735	700	699	707				
45	695	696	701	704	698	677	664	668	674	685	688	684	670	635	618				
50	660	662	671	689	673	629	614	604	610	640	638	611	590	569	526				
55	624	619	621	622	595	567	545	505	523	541	532	515	496	472	447				
60	587	570	564	547	520	510	481	446	428	430	431	419	383	386	339				
65	537	522	511	481	461	475	445	416	387	362	370	333	292	316	275				
70	486	476	468	447	429	426	409	383	347	326	332	302	269	239	217				
75	436	432	430	418	393	366	361	335	305	280	287	261	224	221	171				
80	398	389	383	380	350	315	314	290	266	237	233	215	185	160	131				
85	361	345	332	334	308	273	264	230	202	172	167	152	123	101	77.9				
90	324	300	283	288	267	232	219	165	134	103	88.5	78.1	60.4	44.7	31.8				

C Range: 0 - 360DEG  
 C Interval: 5.0DEG  
 Test Speed: HIGH  
 Temperature: 25DEG  
 Operators:  
 Test Date: 2017-03-06

γ Range: 0 - 90DEG  
 γ Interval: 0.5DEG  
 Test System: EVERFINE GO-2000B\_V1 SYSTEM V2.0.350  
 Humidity: 65.0%  
 Test Distance: 7.850m [K=1.0000]  
 Remarks: