



# LED OUTDOOR WALL SCONCE

► **DESIGN** - LED OUTDOOR WALL SCONCE has a modern, multipurpose design and a stylish look with efficient lighting. Durable housing resistant to rust and impact provides many years of service. The UV resistant PMMA lens with a 125° beam angle grants you even light distribution. It is designed to operate on 120V circuits.

► **PHOTOCELL** - The built-in Dusk to Dawn Photocell will automatically turn the fixture on/off depending on the time of day.

► **COLOR SELECTABLE** - You can choose either a 3,000K warm white, 4,000K cool white or 5,000K daylight color temperature.

► **APPLICATION** - The fixture is rated for Wet Locations, making it perfect for indoor and outdoor projects such as decks, front doors, porches, patios, corridors, walkways, or any other common areas.

► **ADVANTAGES** - With a lifespan of 50,000 hours, these fixtures are made to last decades under normal operation! ASD provides a 5-year limited warranty along with ETL certification to guarantee top quality products and safety!

Catalog number	
Notes	
Type	



Model	Size	Watts	Voitage	Dimmable	Lumens	CCT	Finish	Dimensions (LxWxH)	Option
ASD-OLWS-23-8D12CC-WH	8 inch	12W	120 V	TRIAC	805/909/842 lm	3CCT (3,000/4,000/5,000 K)	White	6' x 3-1/8" x 8"	-
ASD-OLWS-23-8D12CC-BZ	8 inch	12W	120 V	TRIAC	805/909/842 lm	3CCT (3,000/4,000/5,000 K)	Oil rubbed bronze	6' x 3-1/8" x 8"	-
ASD-OLWS-23-8D12CC-BK	8 inch	12W	120 V	TRIAC	805/909/842 lm	3CCT (3,000/4,000/5,000 K)	Black	6' x 3-1/8" x 8"	-
ASD-OLWS-23-14D20CC-WH	14 inch	20W	120 V	TRIAC	1,703/1,909/1,758 lm	3CCT (3,000/4,000/5,000 K)	White	6' x 3-1/8" x 14"	-
ASD-OLWS-23-14D20CC-BZ	14 inch	20W	120 V	TRIAC	1,703/1,909/1,758 lm	3CCT (3,000/4,000/5,000 K)	Oil rubbed bronze	6' x 3-1/8" x 14"	-
ASD-OLWS-23-14D20CC-BK	14 inch	20W	120 V	TRIAC	1,703/1,909/1,758 lm	3CCT (3,000/4,000/5,000 K)	Black	6' x 3-1/8" x 14"	-
<b>OLWS-23-PC WITH PHOTOCELL</b>									
ASD-OLWS-23-14N20CC-PC-BZ	14 inch	20W	120 V	-	1,703/1,909/1,758 lm	3CCT (3,000/4,000/5,000 K)	Oil rubbed bronze	6' x 3-1/8" x 14-5/8"	Photocell
ASD-OLWS-23-14N20CC-PC-BK	14 inch	20W	120 V	-	1,703/1,909/1,758 lm	3CCT (3,000/4,000/5,000 K)	Black	6' x 3-1/8" x 14-5/8"	Photocell

## ORDERING INFORMATION

Model	UPC	Pcs. per carton	Carton size	Carton weight	GTIN 14
ASD-OLWS-23-8D12CC-WH	810050737784	4	13.2" x 7.3" x 9.1"	10.6 lbs	10810050737781
ASD-OLWS-23-8D12CC-BZ	810050737777	4	13.2" x 7.3" x 9.1"	10.6 lbs	10810050737774
ASD-OLWS-23-8D12CC-BK	810050738842	4	13.2" x 7.3" x 9.1"	10.6 lbs	10810050738849
ASD-OLWS-23-14D20CC-WH	810050737791	4	13.2" x 7.3" x 15"	13.2 lbs	10810050737798
ASD-OLWS-23-14D20CC-BZ	810050736442	4	13.2" x 7.3" x 15"	13.2 lbs	30810050736443
ASD-OLWS-23-14D20CC-BK	810050738859	4	13.2" x 7.3" x 15"	13.2 lbs	10810050738856
<b>OLWS-23-PC WITH PHOTOCELL</b>					
ASD-OLWS-23-14N20CC-PC-BZ	810050736756	4	13.2" x 7.3" x 15.8"	13.6 lbs	30810050736757
ASD-OLWS-23-14N20CC-PC-BK	810128110532	4	13.2" x 7.3" x 15.8"	13.6 lbs	10810128110539

For most up-to-date spec sheets please refer to [asd-lighting.com](http://asd-lighting.com)



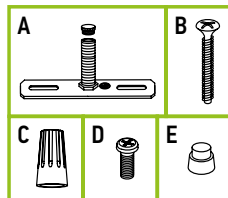
# LED OUTDOOR WALL SCONCE

## PRODUCT SPECIFICATIONS:

Construction & Materials									
Housing	Aluminium								
Lens	Acrylic								
Finish	White, Oil rubbed bronze, Black								
Weight	ASD-OLWS-23-8D12CC-WH	1.9 lbs (0.9 kg)	ASD-OLWS-23-14D20CC-BZ	2.7 lbs (1.2 kg)					
	ASD-OLWS-23-8D12CC-BZ		ASD-OLWS-23-14D20CC-BK						
	ASD-OLWS-23-8D12CC-BK	2.7 lbs (1.2 kg)	ASD-OLWS-23-14N20CC-PC-BZ	2.8 lbs (1.3 kg)					
	ASD-OLWS-23-14D20CC-WH		ASD-OLWS-23-14N20CC-PC-BK						
Environmental system									
Work environment	Suitable for Wet Locations								
Operating temperature	-40°F to 113°F (-40°C to 45°C)		for PC models: -4°F to 113°F (-20°C to 45°C)						
L-70 Life	> 50,000 hrs								
Optical system									
Luminous flux	ASD-OLWS-23-8D12CC-WH	805/909/842 lm	ASD-OLWS-23-14D20CC-BZ	1,703/1,909/1,758 lm					
	ASD-OLWS-23-8D12CC-BZ		ASD-OLWS-23-14D20CC-BK						
	ASD-OLWS-23-8D12CC-BK	1,703/1,909/1,758 lm	ASD-OLWS-23-14N20CC-PC-BZ						
	ASD-OLWS-23-14D20CC-WH		ASD-OLWS-23-14N20CC-PC-BK						
Color temperature	3CCT (3,000/4,000/5,000 K)								
CRI	> 80								
Electrical system									
Input voltage	120 V								
Max input current	ASD-OLWS-23-8D12CC-WH	0.11 A	ASD-OLWS-23-14D20CC-BZ	0.185 A					
	ASD-OLWS-23-8D12CC-BZ		ASD-OLWS-23-14D20CC-BK						
	ASD-OLWS-23-8D12CC-BK	0.185 A	ASD-OLWS-23-14N20CC-PC-BZ						
	ASD-OLWS-23-14D20CC-WH		ASD-OLWS-23-14N20CC-PC-BK						
Inrush current (Action time)	ASD-OLWS-23-8D12CC-WH	0.1 A (0.1 S)	ASD-OLWS-23-14D20CC-BZ	0.16 A (0.1 S)					
	ASD-OLWS-23-8D12CC-BZ		ASD-OLWS-23-14D20CC-BK						
	ASD-OLWS-23-8D12CC-BK	0.16 A (0.1 S)	ASD-OLWS-23-14N20CC-PC-BZ						
	ASD-OLWS-23-14D20CC-WH		ASD-OLWS-23-14N20CC-PC-BK						
Off state power	0W								
Power consumption	ASD-OLWS-23-8D12CC-WH	12W	ASD-OLWS-23-14D20CC-BZ	20W					
	ASD-OLWS-23-8D12CC-BZ		ASD-OLWS-23-14D20CC-BK						
	ASD-OLWS-23-8D12CC-BK	20W	ASD-OLWS-23-14N20CC-PC-BZ						
	ASD-OLWS-23-14D20CC-WH		ASD-OLWS-23-14N20CC-PC-BK						
Power factor	> 0.9								
Output voltage	ASD-OLWS-23-8D12CC-WH	33 V	ASD-OLWS-23-14D20CC-BZ	30 V					
	ASD-OLWS-23-8D12CC-BZ		ASD-OLWS-23-14D20CC-BK						
	ASD-OLWS-23-8D12CC-BK	30 V	ASD-OLWS-23-14N20CC-PC-BZ						
	ASD-OLWS-23-14D20CC-WH		ASD-OLWS-23-14N20CC-PC-BK						
Max output current	ASD-OLWS-23-8D12CC-WH	0.3 A	ASD-OLWS-23-14D20CC-BZ	0.58 A					
	ASD-OLWS-23-8D12CC-BZ		ASD-OLWS-23-14D20CC-BK						
	ASD-OLWS-23-8D12CC-BK	0.58 A	ASD-OLWS-23-14N20CC-PC-BZ						
	ASD-OLWS-23-14D20CC-WH		ASD-OLWS-23-14N20CC-PC-BK						
Surge protection DM/CM	1.25 kV / 1.25 kV								
Dimming compatible controls									
Brand	Lutron			Leviton					
Models	MACL-153MLH-WH	STCL-153PH-WH	PD-6WCL-WH-R	DVCL-153PR	P-PKG1W	R02-DW6HD-2RW	R00-RNL06-0TW	R68-06674-POT	DSL06
Regular and voluntary certifications									
5-year limited warranty									
cETLus certified 4001256									

## PACKAGE CONTENTS:

Description	Q-ty
LED Outdoor Wall Sconce	1
Crossbar (A)	1
Mounting screw (B)	2
Wire nut (C)	3
Black screw (D)	4
Photocell cap (E) only for PC models	1
Box	1



## BUILT-IN PHOTOCCELL INFORMATION

Specifications	Model: MD-EP-120R
Input power	120 V, 60 HZ
Light level to turn ON	30 ~ 150 lux (2.8 - 14 fc)
Light level to turn OFF	200 ~ 800 lux (18.6-74.4 fc)
Operating temperature	-4°F to 122°F (-20°C to 50°C)

The dusk-to-dawn sensor automatically turns the fixture off during daylight hours.

For most up-to-date spec sheets please refer to [asd-lighting.com](http://asd-lighting.com)

ASD LIGHTING CORP

E-mail: [orders@asd-lighting.com](mailto:orders@asd-lighting.com) | Web site: [www.asd-lighting.com](http://www.asd-lighting.com)





# LED OUTDOOR WALL SCONCE

## INSTALLATION GUIDE

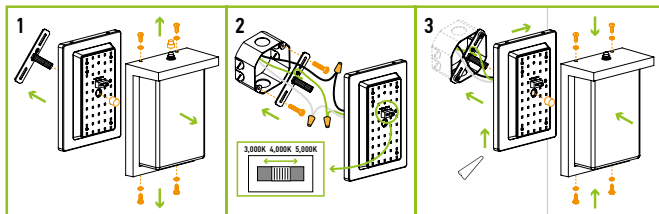
### IMPORTANT SAFETY INFORMATION:

Please read all the instructions below before installation.

- ▶ Make sure that the supply voltage corresponds to the rated product voltage.
- ▶ The product must be installed by a qualified electrician in accordance with the National Electrical Code and corresponding local codes.
- ▶ If the product is damaged, do not use it.

### INSTALLATION STEPS:

1. Remove the lens from the fixture body. In models with photocell option remove the photocell cap to make the dusk-to-dawn sensor operate.
2. Attach the crossbar to the outlet box using mounting screws. Place the fixture body over the outlet box onto the mounting nipple and adjust it by tightening inward or out from the mounting bracket. Secure the fixture body position with cap nut. Connect the wires: Black to Black, White to White, Green to Green. Secure the connection with wire nuts. Choose needed color temperature by adjusting the switch position.
3. Reattach the lens to the fixture body using 4 screws. For outdoor locations please use silicone (not included) shown in the picture below.



### ⚠ WARNING

**RISK OF PERSONAL INJURY – READ and follow all WARNINGS and installation instructions.** Keep or give to the owner for future reference.

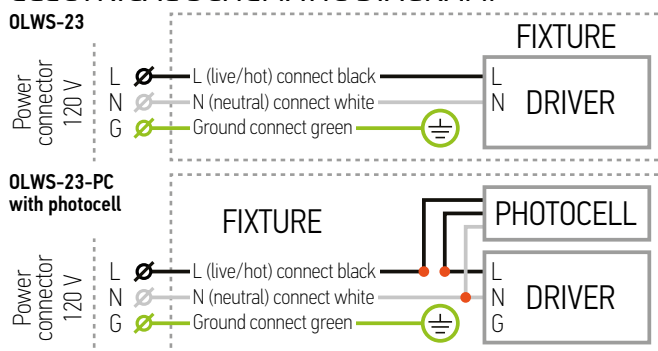
**Risk of cuts:** Wear gloves to prevent cuts or abrasions when removing from carton, handling, installing, and maintaining this product.

**Risk of electric shock:** This product must be installed in accordance with the applicable installation code by a person familiar with the construction and operation of the product and the hazards involved.

**Risk of Fire:** Minimum 194°F supply conductors. Consult a qualified electrician to ensure correct branch circuit conductor.

ASD® assumes no responsibility for claims arising out of improper or careless installation or handling of this product.

### ELECTRICAL SCHEMATIC DIAGRAM:



For most up-to-date spec sheets please refer to [asd-lighting.com](http://asd-lighting.com)