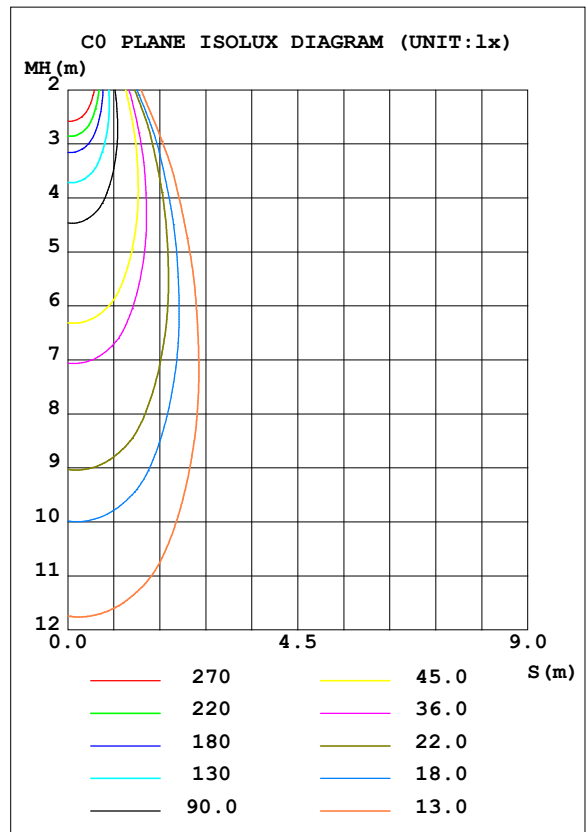
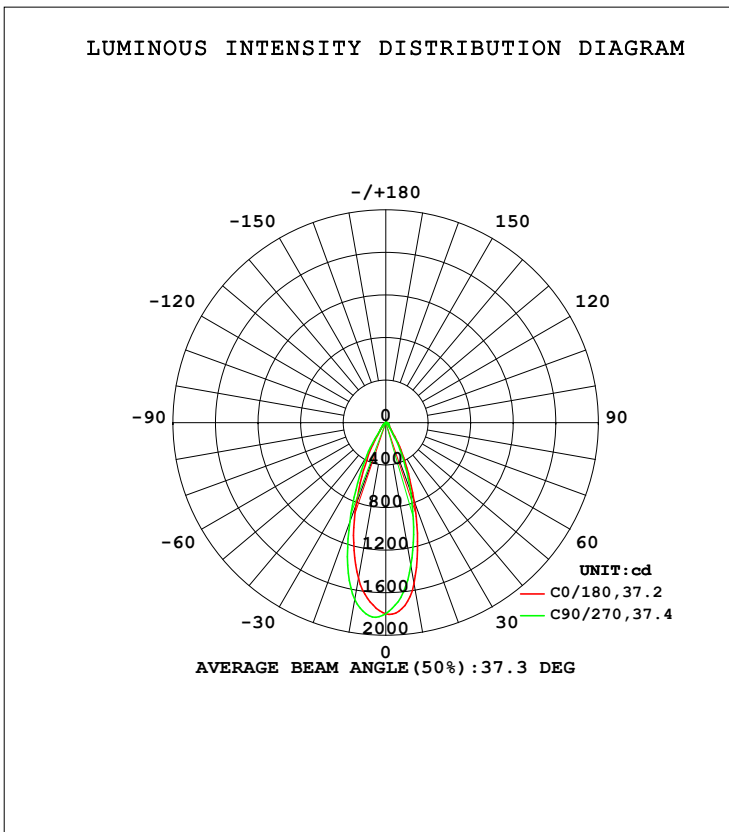


LUMINAIRE PHOTOMETRIC TEST REPORT

Test:U:119.97V I:0.1097A P:12.968W PF:0.9490 Freq:59.98Hz Lamp Flux:881.107x1 lm		
NAME: ASD-CD-TR-2D15AC-WH	TYPE:	WEIGHT:
SPEC.:3000K 90	DIM.:	SERIAL No.:
MFR.: ASD Lighting Corp	SUR.:	Shielding Angle:

DATA OF LAMP		PHOTOMETRIC DATA Eff: 67.95 lm/W			
MODEL		I _{max} (cd)	1832	S/MH (C0/180)	0.62
NOMINAL POWER (W)	15	LOR (%)	100.0	S/MH (C90/270)	0.67
RATED VOLTAGE (V)	120	TOTAL FLUX (lm)	881.11	<input type="checkbox"/> UP, DN (C0-180)	0.0, 44.9
NOMINAL FLUX (lm)	881.107	CIE CLASS	DIRECT	<input type="checkbox"/> UP, DN (C180-360)	0.0, 55.1
LAMPS INSIDE	1	<input type="checkbox"/> up (%)	0.0	CIBSE SHR NOM	0.50
TEST VOLTAGE (V)	120	<input type="checkbox"/> down (%)	100.0	CIBSE SHR MAX	0.65



C Range: 0 - 360DEG
 C Interval: 22.5DEG
 Test Speed: HIGH
 Temperature: 25.3DEG
 Operators:
 Test Date: 2021-10-19

Range: 0 - 90DEG
 Interval: 1.0DEG
 Test System: EVERFINE GO-SPEX500_V1 SYSTEM V2.00.421
 Humidity: 65.0%
 Test Distance: 3.080m [K=1.0000]
 Remarks:

ZONAL FLUX DIAGRAM

ZONAL FLUX DIAGRAM:

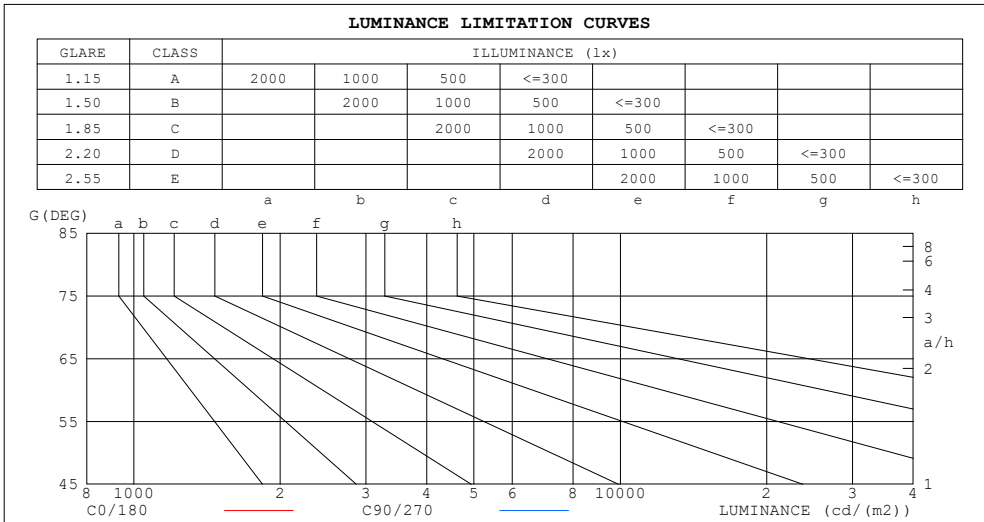
mm	C0	C45	C90	C135	C180	C225	C270	C315	mm	□ zone	□ total	%lum,lamp
10	1537	1456	1362	1446	1486	1576	1688	1592	0- 10	158.4	158.4	18,18
20	778.5	738.2	679.9	734.2	816.0	918.1	993.0	980.8	10- 20	325.5	483.9	54.9,54.9
30	259.1	240.0	204.8	242.2	279.7	339.1	355.1	335.1	20- 30	238.8	722.7	82,82
40	62.82	59.12	55.03	58.65	63.81	68.55	65.87	66.98	30- 40	82.94	805.6	91.4,91.4
50	34.72	34.10	32.30	33.04	33.48	34.54	34.51	34.65	40- 50	35.01	840.6	95.4,95.4
60	18.94	18.49	17.27	17.61	18.02	17.20	16.27	18.16	50- 60	22.32	863.0	97.9,97.9
70	9.987	9.474	7.552	8.281	9.219	7.434	6.400	8.053	60- 70	12.63	875.6	99.4,99.4
80	3.544	2.038	1.011	1.655	3.034	1.238	0.6260	1.339	70- 80	5.039	880.6	99.9,99.9
90	0.0254	0.0266	0.0235	0.0207	0.0408	0.0333	0.0353	0.0408	80- 90	0.4881	881.1	100,100
100									90-100			
110									100-110			
120									110-120			
130									120-130			
140									130-140			
150									140-150			
160									150-160			
170									160-170			
180									170-180			
DEG	LUMINOUS INTENSITY:cd									UNIT:lm		

C Range: 0 - 360DEG
 C Interval: 22.5DEG
 Test Speed: HIGH
 Temperature:25.3DEG
 Operators:
 Test Date:2021-10-19

□ Range: 0 - 90DEG
 □ Interval: 1.0DEG
 Test System:EVERFINE GO-SPEX500_V1 SYSTEM V2.00.421
 Humidity:65.0%
 Test Distance:3.080m [K=1.0000]
 Remarks:

LUMINANCE LIMITATION CURVES

Test:U:119.97V I:0.1097A P:12.968W PF:0.9490 Freq:59.98Hz Lamp Flux:881.107x1 lm		
NAME: ASD-CD-TR-2D15AC-WH	TYPE:	WEIGHT:
SPEC.:3000K 90	DIM.:	SERIAL No.:
MFR.: ASD Lighting Corp	SUR.:	Shielding Angle:



LUMINANCE cd/(m2)		
G (DEG)	C0/180	C90/270
85	48	24
80	183	52
75	224	131
70	262	197
65	302	259
60	340	309
55	405	363
50	485	449
45	578	515

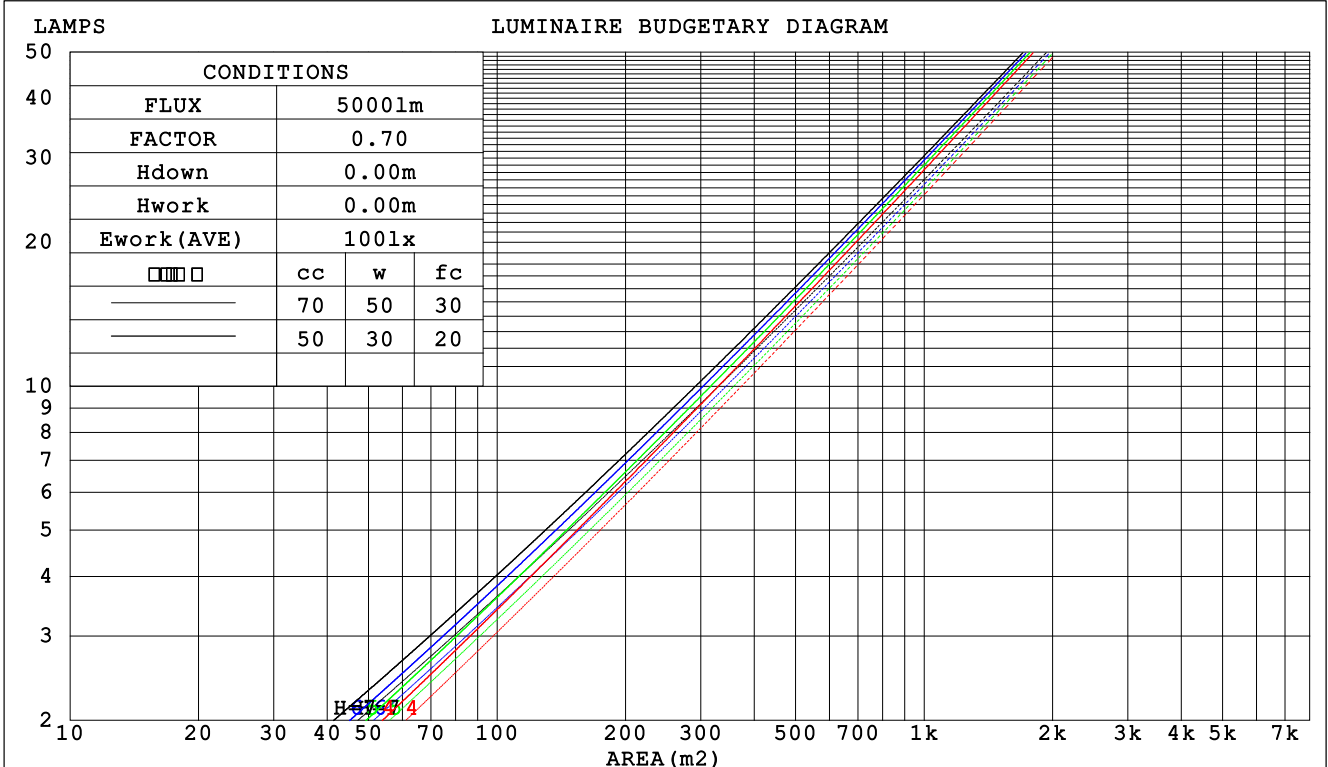
C Range: 0 - 360DEG
 C Interval: 22.5DEG
 Test Speed: HIGH
 Temperature:25.3DEG
 Operators:
 Test Date:2021-10-19

Range: 0 - 90DEG
 Interval: 1.0DEG
 Test System:EVERFINE GO-SPEX500_V1 SYSTEM V2.00.421
 Humidity:65.0%
 Test Distance:3.080m [K=1.0000]
 Remarks:

CU AND LUMINAIRE BUDGETARY ESTIMATE DIAGRAM

Test:U:119.97V I:0.1097A P:12.968W PF:0.9490 Freq:59.98Hz Lamp Flux:881.107x1 lm		
NAME: ASD-CD-TR-2D15AC-WH	TYPE:	WEIGHT:
SPEC.:3000K 90	DIM.:	SERIAL No.:
MFR.: ASD Lighting Corp	SUR.:	Shielding Angle:

□cc	80%			70%			50%			30%			10%			0
□w	50%	30%	10%	50%	30%	10%	50%	30%	10%	50%	30%	10%	50%	30%	10%	0
□fc	20%			20%			20%			20%			20%			0
RCR	RCR:Room Cavity Ratio						Coefficients of Utilization(CU)									
0.0	1.19	1.19	1.19	1.16	1.16	1.16	1.11	1.11	1.11	1.06	1.06	1.06	1.02	1.02	1.02	1.00
1.0	1.11	1.09	1.07	1.09	1.07	1.05	1.05	1.03	1.02	1.01	.00	.99	.98	.97	.96	.94
2.0	1.04	1.00	.97	1.02	.99	.96	.99	.96	.94	.96	.94	.92	.93	.92	.90	.88
3.0	.98	.93	.90	.96	.92	.89	.94	.90	.87	.91	.89	.86	.89	.87	.85	.83
4.0	.92	.87	.83	.91	.86	.83	.89	.85	.82	.87	.84	.81	.85	.82	.80	.79
5.0	.87	.82	.78	.86	.81	.78	.85	.80	.77	.83	.79	.76	.82	.78	.76	.74
6.0	.83	.77	.74	.82	.77	.73	.81	.76	.73	.79	.75	.72	.78	.75	.72	.71
7.0	.79	.73	.70	.78	.73	.69	.77	.72	.69	.76	.72	.69	.75	.71	.68	.67
8.0	.75	.70	.66	.75	.70	.66	.74	.69	.66	.73	.68	.65	.72	.68	.65	.64
9.0	.72	.67	.63	.71	.66	.63	.71	.66	.63	.70	.65	.62	.69	.65	.62	.61
10.0	.69	.64	.60	.68	.63	.60	.68	.63	.60	.67	.63	.60	.66	.62	.60	.58



C Range: 0 - 360DEG
 C Interval: 22.5DEG
 Test Speed: HIGH
 Temperature:25.3DEG
 Operators:
 Test Date:2021-10-19

□ Range: 0 - 90DEG
 □ Interval: 1.0DEG
 Test System:EVERFINE GO-SPEX500_V1 SYSTEM V2.00.421
 Humidity:65.0%
 Test Distance:3.080m [K=1.0000]
 Remarks:

WEC AND CCEC

Test:U:119.97V I:0.1097A P:12.968W PF:0.9490 Freq:59.98Hz Lamp Flux:881.107x1 lm		
NAME: ASD-CD-TR-2D15AC-WH	TYPE:	WEIGHT:
SPEC.:3000K 90	DIM.:	SERIAL No.:
MFR.: ASD Lighting Corp	SUR.:	Shielding Angle:

<input type="checkbox"/> cc	80%	70%	50%	30%	10%	0
<input type="checkbox"/> w	50% 30% 10%	50% 30% 10%	50% 30% 10%	50% 30% 10%	50% 30% 10%	0
<input type="checkbox"/> fc	20%	20%	20%	20%	20%	0
RCR	RCR:Room Cavity Ratio		Wall Exitance Coefficients (WEC)			
0.0						
1.0	.170 .096 .031	.163 .093 .030	.150 .086 .028	.139 .080 .026	.128 .074 .024	
2.0	.161 .088 .027	.155 .086 .026	.145 .080 .025	.135 .076 .024	.126 .071 .022	
3.0	.152 .081 .024	.147 .079 .024	.138 .075 .023	.130 .071 .022	.122 .068 .021	
4.0	.143 .074 .022	.139 .073 .022	.132 .070 .021	.124 .067 .020	.118 .064 .020	
5.0	.136 .069 .020	.132 .068 .020	.125 .065 .019	.119 .063 .019	.114 .061 .018	
6.0	.129 .064 .018	.126 .063 .018	.120 .061 .018	.114 .059 .017	.109 .058 .017	
7.0	.122 .060 .017	.120 .060 .017	.115 .058 .017	.110 .056 .016	.105 .055 .016	
8.0	.117 .057 .016	.114 .056 .016	.110 .055 .016	.106 .053 .015	.102 .052 .015	
9.0	.111 .054 .015	.109 .053 .015	.105 .052 .015	.102 .051 .015	.098 .050 .014	
10.0	.107 .051 .014	.105 .051 .014	.101 .050 .014	.098 .049 .014	.095 .048 .014	

<input type="checkbox"/> cc	80%	70%	50%	30%	10%	0
<input type="checkbox"/> w	50% 30% 10%	50% 30% 10%	50% 30% 10%	50% 30% 10%	50% 30% 10%	0
<input type="checkbox"/> fc	20%	20%	20%	20%	20%	0
RCR	RCR:Room Cavity Ratio		Ceiling Cavity Exitance Coefficients (CCEC)			
0.0	.190 .190 .190	.163 .163 .163	.111 .111 .111	.064 .064 .064	.020 .020 .020	
1.0	.171 .157 .145	.146 .135 .125	.100 .093 .087	.057 .054 .050	.018 .017 .016	
2.0	.155 .133 .114	.133 .114 .098	.091 .079 .069	.052 .046 .040	.017 .015 .013	
3.0	.142 .113 .091	.121 .098 .079	.083 .068 .055	.048 .040 .033	.015 .013 .011	
4.0	.131 .099 .074	.112 .085 .064	.077 .059 .045	.045 .035 .027	.014 .011 .009	
5.0	.121 .087 .061	.104 .075 .053	.072 .052 .038	.042 .031 .022	.013 .010 .007	
6.0	.113 .077 .051	.098 .067 .045	.067 .047 .032	.039 .028 .019	.013 .009 .006	
7.0	.107 .070 .044	.092 .060 .038	.063 .042 .027	.037 .025 .016	.012 .008 .005	
8.0	.100 .063 .038	.087 .055 .033	.060 .038 .023	.035 .023 .014	.011 .007 .005	
9.0	.095 .058 .033	.082 .050 .028	.057 .035 .020	.033 .021 .012	.011 .007 .004	
10.0	.090 .053 .029	.078 .046 .025	.054 .033 .018	.032 .019 .011	.010 .006 .004	

C Range: 0 - 360DEG
 C Interval: 22.5DEG
 Test Speed: HIGH
 Temperature:25.3DEG
 Operators:
 Test Date:2021-10-19

Range: 0 - 90DEG
 Interval: 1.0DEG
 Test System:EVERFINE GO-SPEX500_V1 SYSTEM V2.00.421
 Humidity:65.0%
 Test Distance:3.080m [K=1.0000]
 Remarks:

UGR(Unified Glare Rating) Table

Test:U:119.97V I:0.1097A P:12.968W PF:0.9490 Freq:59.98Hz Lamp Flux:881.107x1 lm										
NAME: ASD-CD-TR-2D15AC-WH					TYPE:			WEIGHT:		
SPEC.:3000K 90					DIM.:			SERIAL No.:		
MFR.: ASD Lighting Corp					SUR.:			Shielding Angle:		
ceiling/cavity	0.7	0.7	0.5	0.5	0.3	0.7	0.7	0.5	0.5	0.3
walls	0.5	0.3	0.5	0.3	0.3	0.5	0.3	0.5	0.3	0.3
working plane	0.2	0.2	0.2	0.2	0.2	0.2	0.2	0.2	0.2	0.2
Room dimensions	Viewed crosswise					Viewed endwise				
x = 2H y = 2H	5.0	5.9	5.3	6.1	6.2	4.4	5.2	4.6	5.4	5.5
3H	5.7	6.5	6.0	6.7	6.9	4.9	5.7	5.2	5.9	6.1
4H	6.0	6.7	6.2	6.9	7.1	5.0	5.8	5.3	6.0	6.2
6H	6.1	6.8	6.4	7.1	7.3	5.0	5.7	5.3	5.9	6.2
8H	6.1	6.8	6.4	7.0	7.3	4.9	5.6	5.2	5.9	6.1
12H	6.0	6.7	6.4	7.0	7.2	4.9	5.6	5.2	5.8	6.1
4H 2H	5.3	6.0	5.5	6.2	6.5	4.7	5.4	4.9	5.6	5.9
3H	6.1	6.7	6.4	7.0	7.3	5.4	6.0	5.7	6.3	6.6
4H	6.4	7.0	6.8	7.3	7.6	5.5	6.1	5.9	6.4	6.7
6H	6.6	7.2	7.0	7.5	7.9	5.5	6.0	5.9	6.4	6.7
8H	6.6	7.1	7.0	7.5	7.8	5.5	6.0	5.9	6.3	6.7
12H	6.6	7.0	7.0	7.4	7.8	5.4	5.9	5.8	6.2	6.6
8H 4H	6.4	6.9	6.8	7.3	7.6	5.6	6.1	6.0	6.4	6.8
6H	6.7	7.1	7.1	7.5	7.9	5.6	6.0	6.0	6.4	6.8
8H	6.7	7.1	7.2	7.5	7.9	5.5	5.9	6.0	6.3	6.8
12H	6.7	7.0	7.1	7.4	7.9	5.5	5.8	6.0	6.2	6.7
12H 4H	6.4	6.8	6.8	7.2	7.6	5.6	6.0	6.0	6.4	6.8
6H	6.7	7.0	7.1	7.4	7.9	5.6	5.9	6.0	6.3	6.8
8H	6.7	7.0	7.1	7.4	7.9	5.5	5.8	6.0	6.3	6.7
Variations with the observer position at spacings:										
S = 1.0H	+ 0.6 / - 0.7					+ 0.7 / - 0.9				
1.5H	+ 0.9 / - 0.4					+ 0.5 / - 0.5				
2.0H	+ 0.9 / - 0.8					+ 1.1 / - 1.0				

CIE Pub.117, 881.1 lm Total Lamp Luminous Flux Correct (8log(F/F0) = -0.4)
 Area: 0.111111 m2

C Range: 0 - 360DEG
 C Interval: 22.5DEG
 Test Speed: HIGH
 Temperature:25.3DEG
 Operators:
 Test Date:2021-10-19

Range: 0 - 90DEG
 Interval: 1.0DEG
 Test System:EVERFINE GO-SPEX500_V1 SYSTEM V2.00.421
 Humidity:65.0%
 Test Distance:3.080m [K=1.0000]
 Remarks:

UTILIZATION FACTORS TABLE

Test:U:119.97V I:0.1097A P:12.968W PF:0.9490 Freq:59.98Hz Lamp Flux:881.107x1 lm		
NAME: ASD-CD-TR-2D15AC-WH	TYPE:	WEIGHT:
SPEC.:3000K 90	DIM.:	SERIAL No.:
MFR.: ASD Lighting Corp	SUR.:	Shielding Angle:

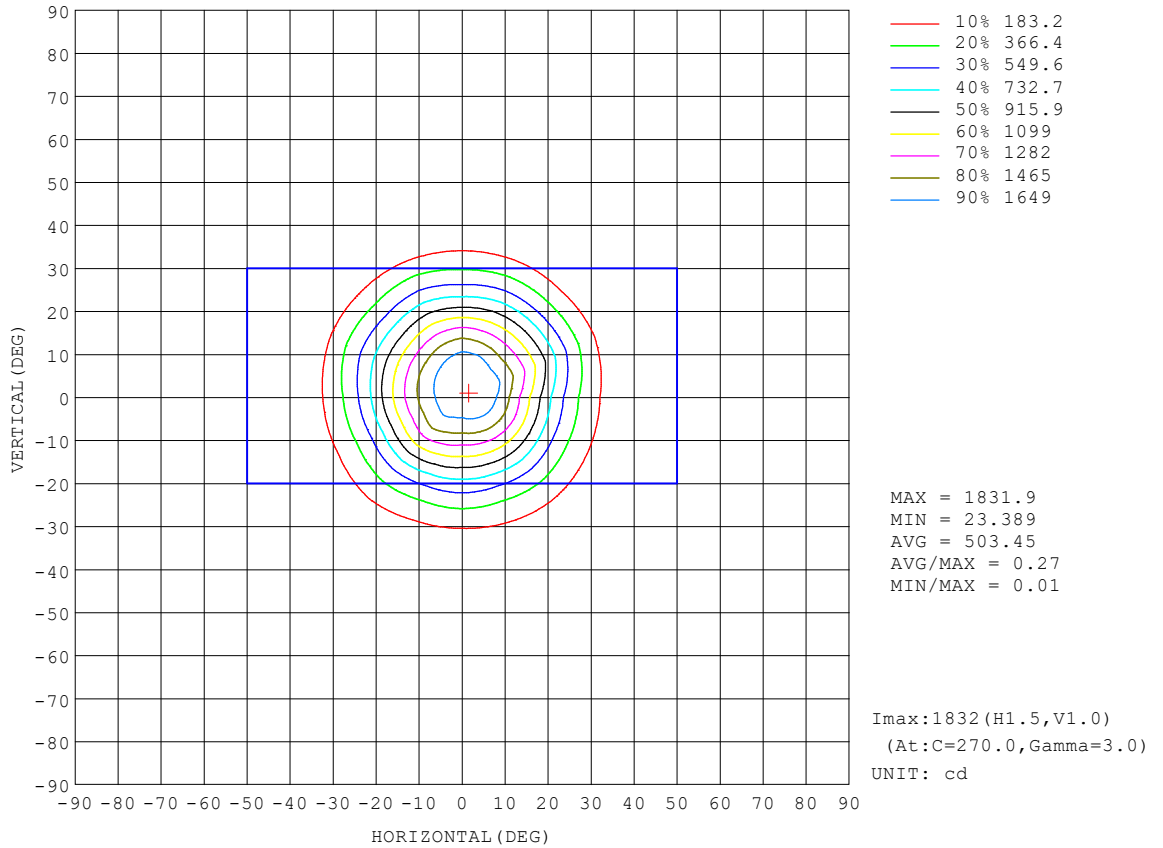
REFLECTANCE										
Ceiling	0.8	0.8	0.8	0.7	0.7	0.7	0.5	0.5	0.5	0
Walls	0.7	0.5	0.3	0.7	0.5	0.3	0.7	0.5	0.3	0
Working plane	0.2	0.2	0.2	0.2	0.2	0.2	0.2	0.2	0.2	0
ROOM INDEX	UTILIZATION FACTORS (PERCENT) $k(RI) \times RCR = 5$									
k = 0.60	86	80	76	86	79	76	85	79	76	72
0.80	94	88	84	93	87	84	92	87	83	79
1.00	98	92	89	97	92	88	96	92	88	84
1.25	102	97	93	101	96	93	99	95	92	88
1.50	105	100	97	104	99	96	102	98	95	91
2.00	108	104	100	107	103	100	104	101	98	93
2.50	110	106	103	108	105	102	105	102	100	94
3.00	111	108	105	110	106	104	106	104	102	95
4.00	114	111	108	111	109	107	108	106	104	97
5.00	115	112	111	113	111	109	109	107	106	98
ROOM INDEX	UF(total)									Direct
According to DIN EN 13032-2 2004			Suspended				SHRNOM = 1.25			

C Range: 0 - 360DEG
 C Interval: 22.5DEG
 Test Speed: HIGH
 Temperature:25.3DEG
 Operators:
 Test Date:2021-10-19

Range: 0 - 90DEG
 Interval: 1.0DEG
 Test System:EVERFINE GO-SPEX500_V1 SYSTEM V2.00.421
 Humidity:65.0%
 Test Distance:3.080m [K=1.0000]
 Remarks:

ISOCANDELA DIAGRAM

Test:U:119.97V I:0.1097A P:12.968W PF:0.9490 Freq:59.98Hz Lamp Flux:881.107x1 lm		
NAME: ASD-CD-TR-2D15AC-WH	TYPE:	WEIGHT:
SPEC.:3000K 90	DIM.:	SERIAL No.:
MFR.: ASD Lighting Corp	SUR.:	Shielding Angle:

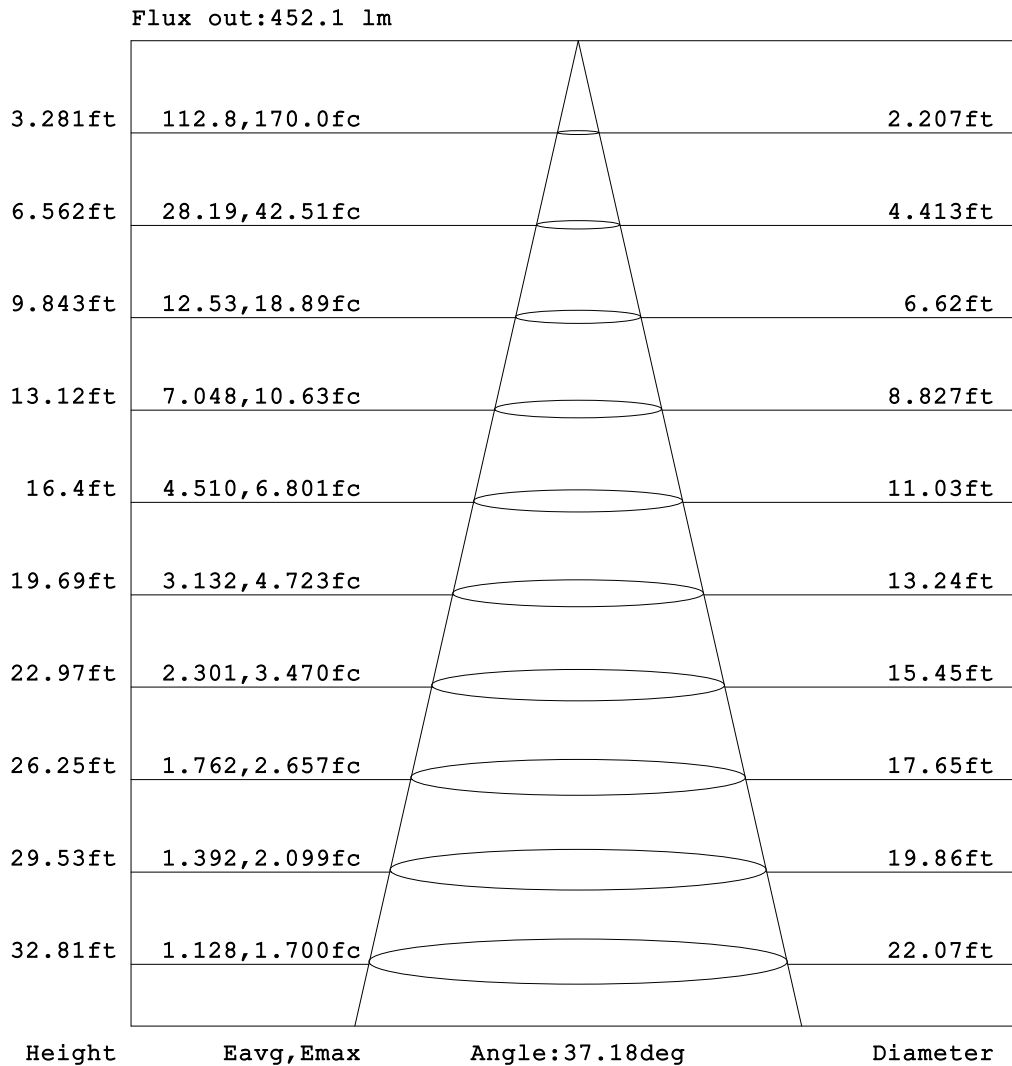


C Range: 0 - 360DEG
 C Interval: 22.5DEG
 Test Speed: HIGH
 Temperature:25.3DEG
 Operators:
 Test Date:2021-10-19

Range: 0 - 90DEG
 Interval: 1.0DEG
 Test System:EVERFINE GO-SPEX500_V1 SYSTEM V2.00.421
 Humidity:65.0%
 Test Distance:3.080m [K=1.0000]
 Remarks:

AAI Figure

Test:U:119.97V I:0.1097A P:12.968W PF:0.9490 Freq:59.98Hz Lamp Flux:881.107x1 lm		
NAME: ASD-CD-TR-2D15AC-WH	TYPE:	WEIGHT:
SPEC.:3000K 90	DIM.:	SERIAL No.:
MFR.: ASD Lighting Corp	SUR.:	Shielding Angle:



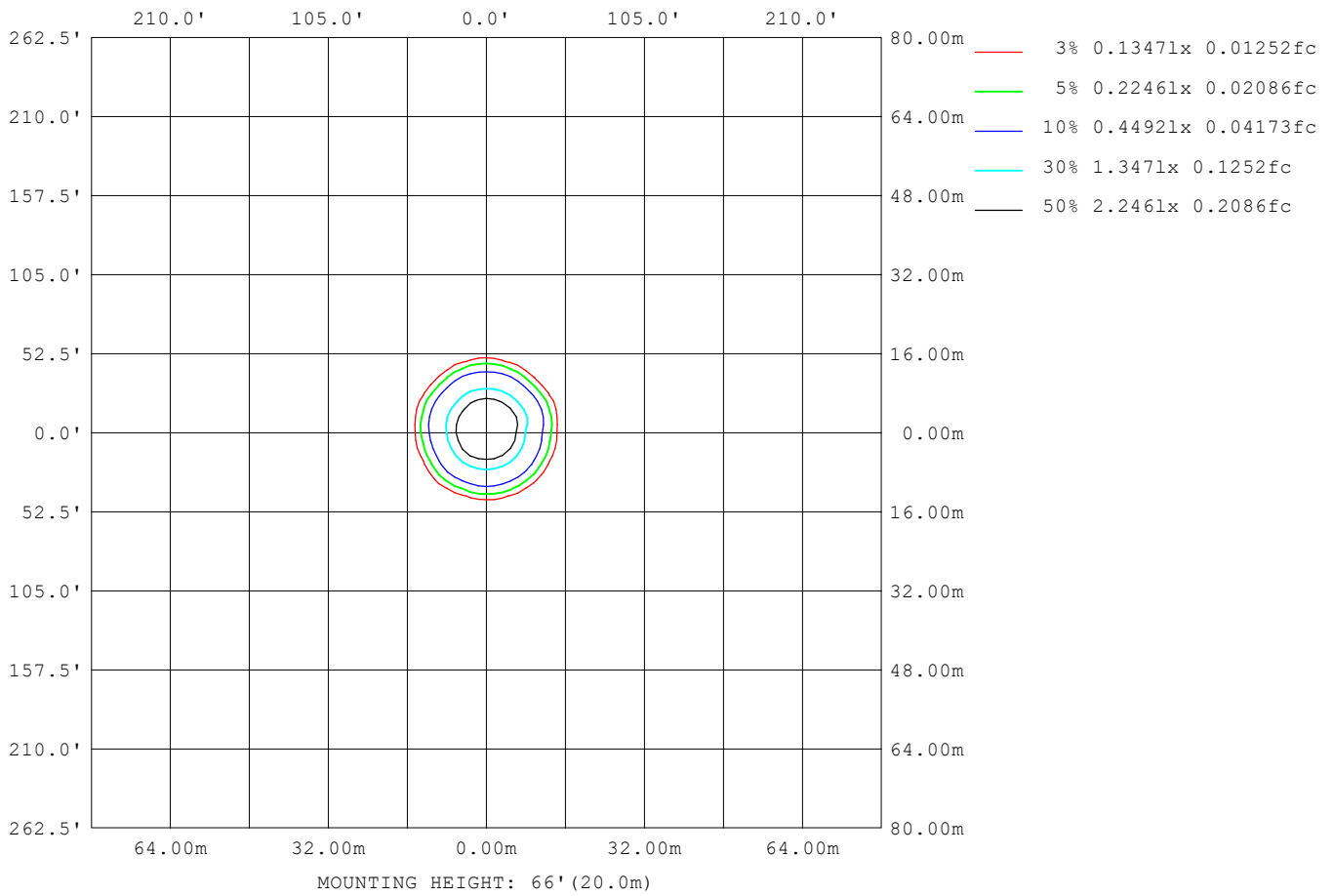
Note:The Curves indicate the illuminated area and the average illumination when the luminaire is at different distance.

C Range: 0 - 360DEG
 C Interval: 22.5DEG
 Test Speed: HIGH
 Temperature:25.3DEG
 Operators:
 Test Date:2021-10-19

Range: 0 - 90DEG
 Interval: 1.0DEG
 Test System:EVERFINE GO-SPEX500_V1 SYSTEM V2.00.421
 Humidity:65.0%
 Test Distance:3.080m [K=1.0000]
 Remarks:

ISOLUX DIAGRAM

Test:U:119.97V I:0.1097A P:12.968W PF:0.9490 Freq:59.98Hz Lamp Flux:881.107x1 lm		
NAME: ASD-CD-TR-2D15AC-WH	TYPE:	WEIGHT:
SPEC.:3000K 90	DIM.:	SERIAL No.:
MFR.: ASD Lighting Corp	SUR.:	Shielding Angle:



C Range: 0 - 360DEG
 C Interval: 22.5DEG
 Test Speed: HIGH
 Temperature:25.3DEG
 Operators:
 Test Date:2021-10-19

Range: 0 - 90DEG
 Interval: 1.0DEG
 Test System:EVERFINE GO-SPEX500_V1 SYSTEM V2.00.421
 Humidity:65.0%
 Test Distance:3.080m [K=1.0000]
 Remarks:

LED Avg.L Report

Test:U:119.97V I:0.1097A P:12.968W PF:0.9490 Freq:59.98Hz Lamp Flux:881.107x1 lm		
NAME: ASD-CD-TR-2D15AC-WH	TYPE:	WEIGHT:
SPEC.:3000K 90	DIM.:	SERIAL No.:
MFR.: ASD Lighting Corp	SUR.:	Shielding Angle:

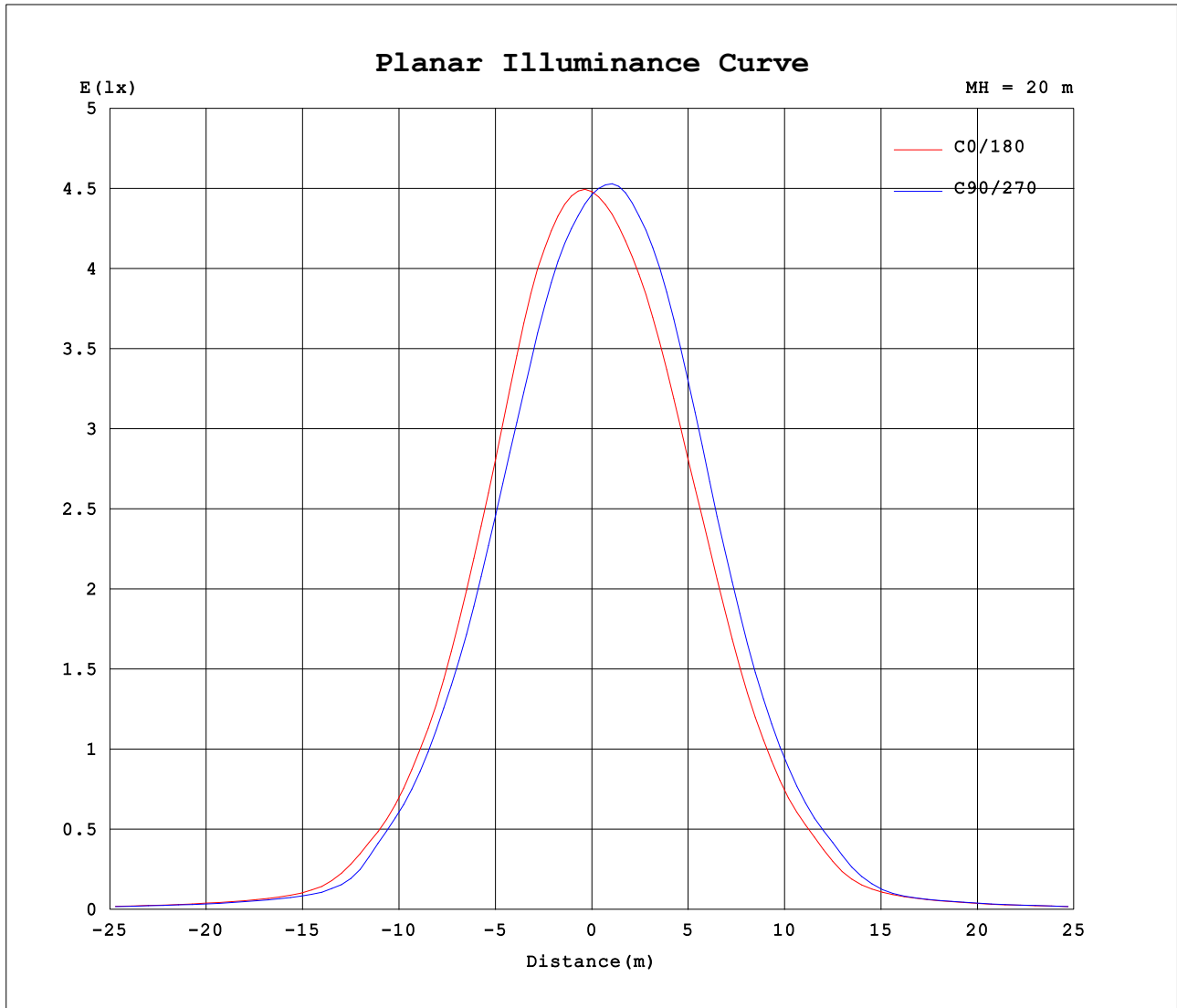
AvgL	cd/m2
L_0~180 (65) av	292
L_0~180 (75) av	214
L_0~180 (85) av	48
L_90~270 (65) av	245
L_90~270 (75) av	119
L_90~270 (85) av	15
L_45 (65) av	272
L_45 (75) av	158
L_45 (85) av	16

Standard: GB/T 29293-2012

C Range: 0 - 360DEG
 C Interval: 22.5DEG
 Test Speed: HIGH
 Temperature:25.3DEG
 Operators:
 Test Date:2021-10-19

Range: 0 - 90DEG
 Interval: 1.0DEG
 Test System:EVERFINE GO-SPEX500_V1 SYSTEM V2.00.421
 Humidity:65.0%
 Test Distance:3.080m [K=1.0000]
 Remarks:

Planar Illuminance Curve



C Range: 0 - 360DEG
 C Interval: 22.5DEG
 Test Speed: HIGH
 Temperature: 25.3DEG
 Operators:
 Test Date: 2021-10-19

Range: 0 - 90DEG
 Interval: 1.0DEG
 Test System: EVERFINE GO-SPEX500_V1 SYSTEM V2.00.421
 Humidity: 65.0%
 Test Distance: 3.080m [K=1.0000]
 Remarks:

LUMINOUS DISTRIBUTION INTENSITY DATA

Test:U:119.97V I:0.1097A P:12.968W PF:0.9490 Freq:59.98Hz Lamp Flux:881.107x1 lm		
NAME: ASD-CD-TR-2D15AC-WH	TYPE:	WEIGHT:
SPEC.:3000K 90	DIM.:	SERIAL No.:
MFR.: ASD Lighting Corp	SUR.:	Shielding Angle:

Table--1

UNIT: cd

C (DEG) □ (DEG)	0	22.5	45	67.5	90	112.5	135	157.5	180	202.5	225	247.5	270	292.5	315	337.5			
0	1797	1797	1797	1797	1797	1797	1797	1797	1797	1797	1797	1797	1797	1797	1797	1797			
5	1756	1734	1710	1680	1649	1645	1663	1658	1693	1723	1760	1792	1823	1810	1775	1778			
10	1537	1505	1456	1398	1362	1387	1446	1424	1486	1525	1576	1638	1688	1663	1592	1601			
15	1157	1133	1094	1042	1015	1043	1104	1094	1170	1215	1269	1345	1387	1354	1315	1318			
20	779	749	738	686	680	678	734	729	816	880	918	991	993	995	981	975			
25	471	446	444	400	407	393	435	432	500	587	596	656	627	648	627	625			
30	259	244	240	217	205	203	242	233	280	342	339	377	355	361	335	340			
35	106	98.2	96.7	84.4	79.9	80.9	96.5	94.1	113	135	138	149	152	143	130	136			
40	62.8	60.0	59.1	56.3	55.0	54.5	58.7	57.6	63.8	68.9	68.6	70.0	65.9	66.1	67.0	68.7			
45	45.6	43.6	42.8	41.9	40.8	40.6	41.9	40.3	43.7	45.5	46.3	47.4	46.7	48.0	46.2	47.3			
50	34.7	34.3	34.1	33.4	32.3	32.0	33.0	31.7	33.5	34.0	34.5	33.9	34.5	35.2	34.6	35.1			
55	25.9	25.3	24.8	24.1	23.3	23.2	24.2	23.3	24.6	25.4	24.9	23.1	23.4	24.0	25.8	26.8			
60	18.9	18.7	18.5	18.1	17.3	17.0	17.6	17.0	18.0	18.1	17.2	16.2	16.3	16.9	18.2	19.3			
65	14.2	14.0	13.9	13.2	12.3	12.0	12.7	12.4	13.3	13.0	11.9	10.8	10.8	11.3	12.8	14.3			
70	9.99	9.91	9.47	8.41	7.55	7.49	8.28	8.61	9.22	8.66	7.43	6.53	6.40	6.85	8.05	9.70			
75	6.46	6.39	5.38	4.41	3.79	3.84	4.58	5.27	5.83	5.06	3.91	3.19	3.04	3.34	4.29	5.79			
80	3.54	3.11	2.04	1.32	1.01	1.07	1.65	2.44	3.03	2.20	1.24	0.71	0.63	0.74	1.34	2.61			
85	0.47	0.56	0.33	0.28	0.23	0.22	0.14	0.46	0.47	0.34	0.06	0.06	0.06	0.07	0.11	0.39			
90	0.03	0.03	0.03	0.02	0.02	0.02	0.02	0.02	0.04	0.04	0.03	0.03	0.04	0.03	0.04	0.03			

C Range: 0 - 360DEG
 C Interval: 22.5DEG
 Test Speed: HIGH
 Temperature:25.3DEG
 Operators:
 Test Date:2021-10-19

□ Range: 0 - 90DEG
 □ Interval: 1.0DEG
 Test System:EVERFINE GO-SPEX500_V1 SYSTEM V2.00.421
 Humidity:65.0%
 Test Distance:3.080m [K=1.0000]
 Remarks: