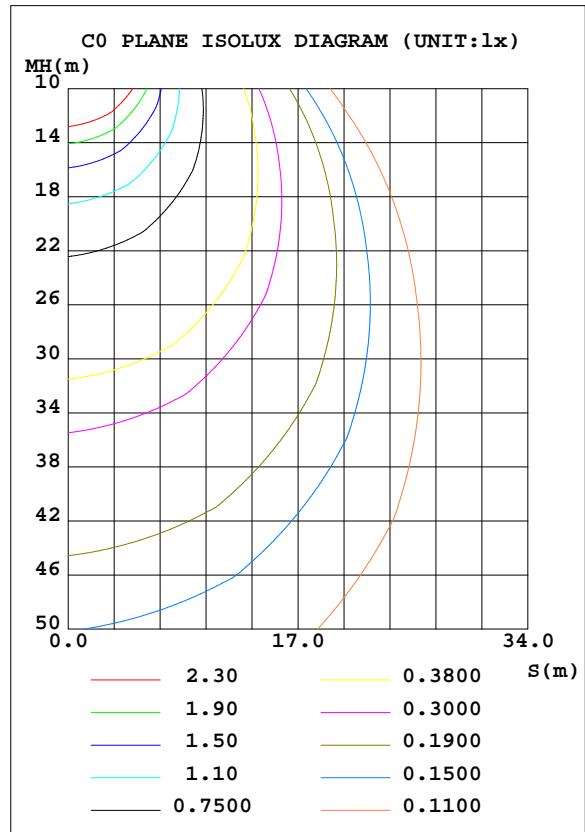
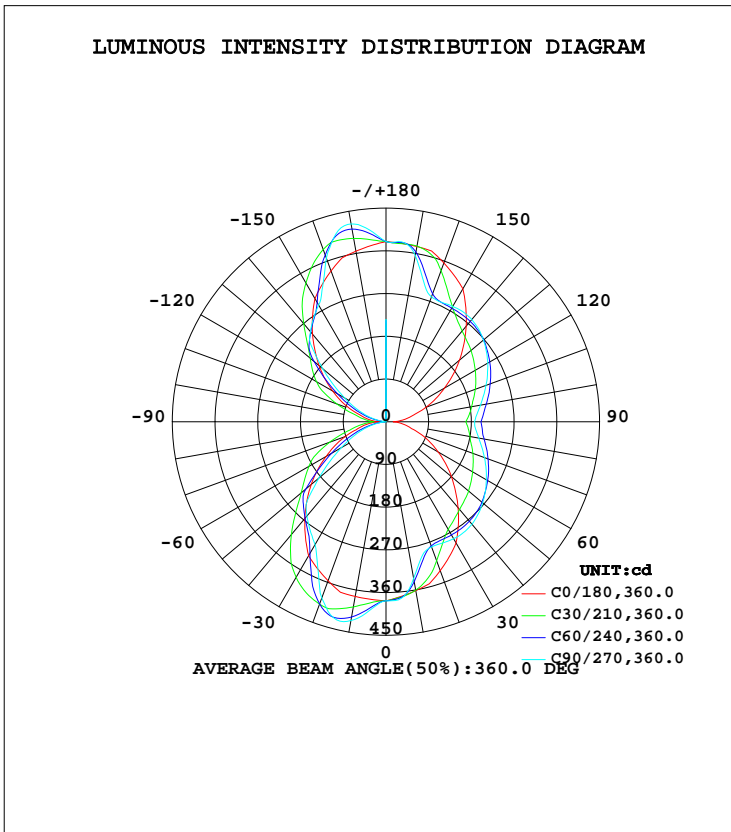


LUMINAIRE PHOTOMETRIC TEST REPORT

Test:U:120.00V I:0.2389A P:28.310W PF:0.9876 Freq:60.00Hz Lamp Flux:2468.11x1 lm		
NAME: ASD-LVF26M-5D28BK/CH_5000K	TYPE:LED	WEIGHT:
SPEC.:N/A	DIM.:	SERIAL No.:
MFR.: ASD Lighting Corp	SUR.:	Shielding Angle:

DATA OF LAMP		PHOTOMETRIC DATA Eff: 87.18 lm/W			
MODEL	ASD-LVF26M-5D28BK/CH	I _{max} (cd)	431.2	S/MH(C0/180)	1.26
NOMINAL POWER(W)	28	LOR(%)	100.0	S/MH(C90/270)	1.19
RATED VOLTAGE(V)	120	TOTAL FLUX(lm)	2468.1	η UP, DN(C0-180)	28.9,28.6
NOMINAL FLUX(lm)	2468.11	CIE CLASS	DIFFUSE	η UP, DN(C180-360)	20.8,21.7
LAMPS INSIDE	1	η up(%)	49.7	CIBSE SHR NOM	1.25
TEST VOLTAGE(V)	120	η down(%)	50.3	CIBSE SHR MAX	1.35



C Range: 0 - 360DEG
 C Interval: 15.0DEG
 Test Speed: HIGH
 Temperature: 25.0DEG
 Operators: Alan Wang
 Test Date: 11 August 2023

γ Range: 0 - 180DEG
 γ Interval: 1.0DEG
 Test System: EVERFINE GO-R5000_V2 SYSTEM V2.00.416
 Humidity: 44.2%
 Test Distance: 2.500m [K=1.0391]
 Remarks:

ZONAL FLUX DIAGRAM

ZONAL FLUX DIAGRAM:

γ	C0	C45	C90	C135	C180	C225	C270	C315	γ	Φ zone	Φ total	%lum,lamp
10	361.4	352.4	335.6	359.3	373.7	408.7	425.3	399.7	0- 10	36.17	36.17	1.47,1.47
20	334.0	287.7	280.7	294.3	356.7	421.4	395.3	401.5	10- 20	102.8	139.0	5.63,5.63
30	295.2	265.1	284.6	269.4	326.2	352.1	299.0	334.9	20- 30	150.4	289.4	11.7,11.7
40	236.4	260.6	281.6	265.1	266.1	273.1	259.2	259.9	30- 40	179.3	468.7	19,19
50	180.2	251.0	266.0	254.5	205.6	229.4	184.5	217.8	40- 50	192.2	660.9	26.8,26.8
60	126.5	237.4	244.1	240.3	145.0	164.3	108.1	151.6	50- 60	183.0	843.9	34.2,34.2
70	79.52	221.5	220.8	223.4	91.83	93.22	56.55	84.46	60- 70	160.3	1004	40.7,40.7
80	42.41	204.9	198.7	205.7	48.43	42.09	16.49	36.37	70- 80	131.8	1136	46,46
90	15.18	195.2	186.7	193.0	14.79	11.64	0.2609	12.14	80- 90	105.8	1242	50.3,50.3
100	47.55	209.0	202.1	203.8	42.91	34.07	12.67	37.32	90-100	105.4	1347	54.6,54.6
110	89.88	226.4	224.2	219.6	81.08	80.69	51.29	86.30	100-110	130.5	1478	59.9,59.9
120	142.2	243.1	247.6	234.6	129.3	145.7	100.9	154.2	110-120	158.1	1636	66.3,66.3
130	202.2	256.2	268.1	246.8	183.9	211.2	174.0	220.7	120-130	180.1	1816	73.6,73.6
140	262.8	265.2	281.3	255.0	240.7	248.3	247.8	260.0	130-140	188.6	2004	81.2,81.2
150	323.9	270.0	280.9	260.8	299.6	310.8	284.2	327.2	140-150	175.7	2180	88.3,88.3
160	356.3	308.4	280.1	300.8	338.3	388.7	367.5	404.8	150-160	147.6	2328	94.3,94.3
170	374.9	371.4	355.8	365.6	365.0	403.9	423.2	410.9	160-170	103.5	2431	98.5,98.5
180	379.7	379.7	379.7	379.7	379.7	379.7	379.7	379.7	170-180	36.71	2468	100,100
DEG	LUMINOUS INTENSITY:cd									UNIT:lm		

Conical surface Flux(90deg): 564.46 lm

%lum = 22.9%

%lamp = 22.9%

Conical surface Flux(120deg): 843.94 lm

%lum = 34.2%

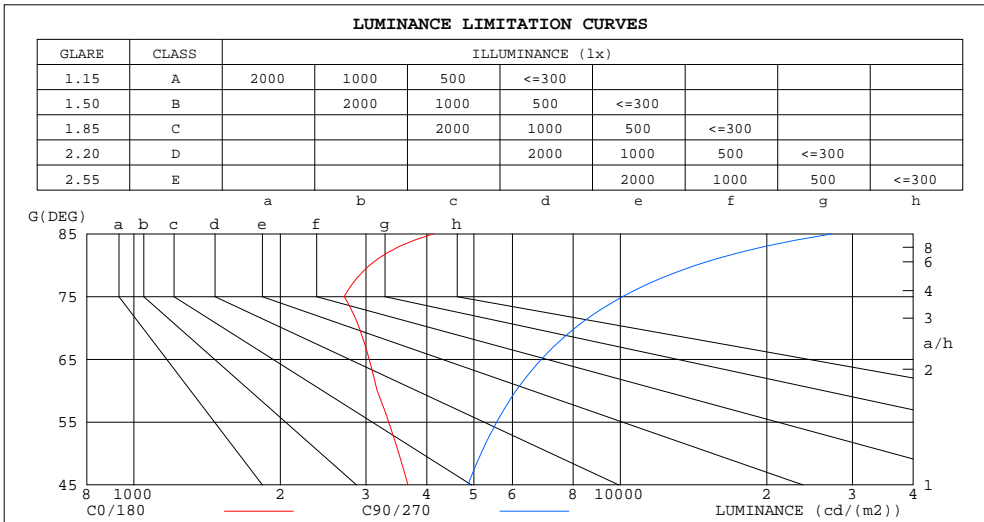
%lamp = 34.2%

C Range: 0 - 360DEG
 C Interval: 15.0DEG
 Test Speed: HIGH
 Temperature: 25.0DEG
 Operators: Alan Wang
 Test Date: 11 August 2023

γ Range: 0 - 180DEG
 γ Interval: 1.0DEG
 Test System: EVERFINE GO-R5000_V2 SYSTEM V2.00.416
 Humidity: 44.2%
 Test Distance: 2.500m [K=1.0391]
 Remarks:

LUMINANCE LIMITATION CURVES

Test:U:120.00V I:0.2389A P:28.310W PF:0.9876 Freq:60.00Hz Lamp Flux:2468.11x1 lm		
NAME: ASD-LVF26M-5D28BK/CH_5000K	TYPE:LED	WEIGHT:
SPEC.:N/A	DIM.:	SERIAL No.:
MFR.: ASD Lighting Corp	SUR.:	Shielding Angle:



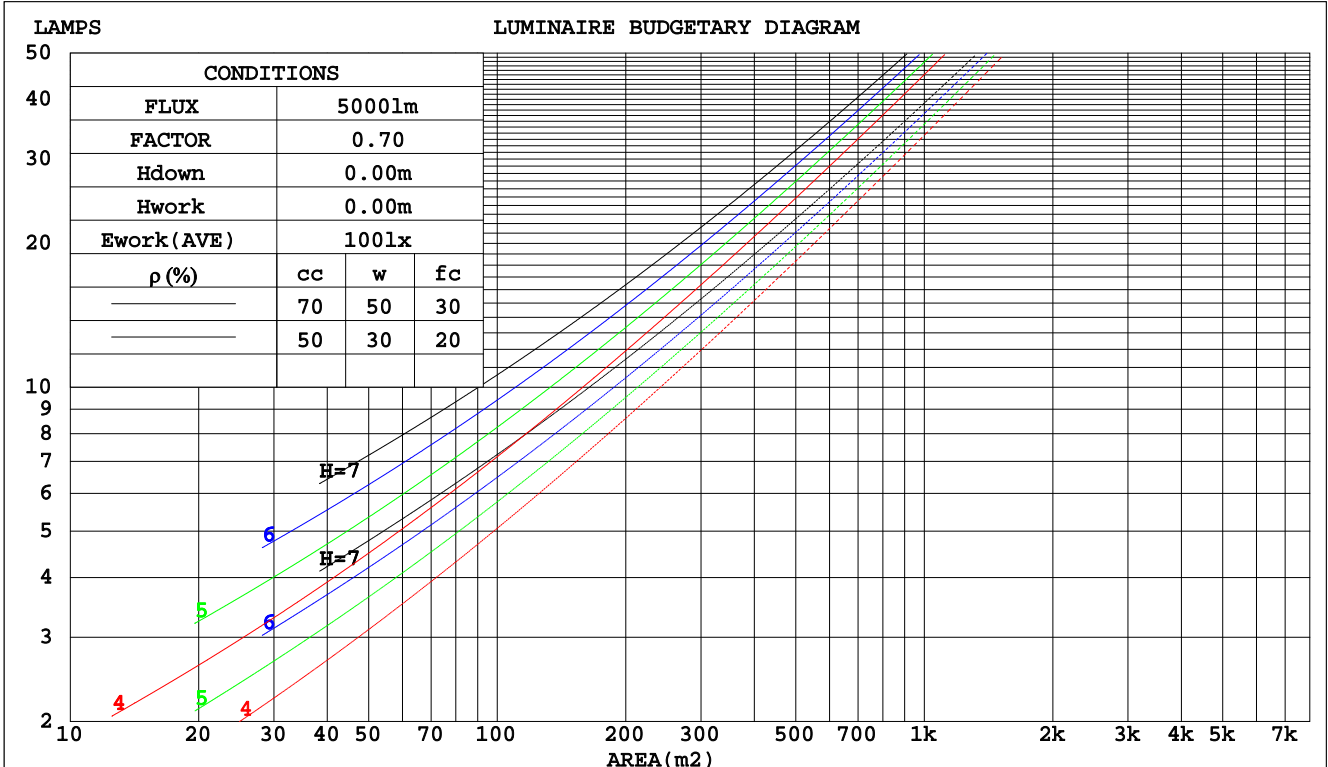
C Range: 0 - 360DEG
 C Interval: 15.0DEG
 Test Speed: HIGH
 Temperature: 25.0DEG
 Operators: Alan Wang
 Test Date: 11 August 2023

γ Range: 0 - 180DEG
 γ Interval: 1.0DEG
 Test System: EVERFINE GO-R5000_V2 SYSTEM V2.00.416
 Humidity: 44.2%
 Test Distance: 2.500m [K=1.0391]
 Remarks:

CU AND LUMINAIRE BUDGETARY ESTIMATE DIAGRAM

Test:U:120.00V I:0.2389A P:28.310W PF:0.9876 Freq:60.00Hz Lamp Flux:2468.11x1 lm		
NAME: ASD-LVF26M-5D28BK/CH_5000K	TYPE:LED	WEIGHT:
SPEC.:N/A	DIM.:	SERIAL No.:
MFR.: ASD Lighting Corp	SUR.:	Shielding Angle:

pcc	80%			70%			50%			30%			10%			0
	50%	30%	10%	50%	30%	10%	50%	30%	10%	50%	30%	10%	50%	30%	10%	0
pw																0
pfc	20%			20%			20%			20%			20%			0
RCR	RCR:Room Cavity Ratio						Coefficients of Utilization(CU)									
0.0	1.07	1.07	1.07	.99	.99	.99	.84	.84	.84	.69	.69	.69	.56	.56	.56	.50
1.0	.91	.86	.82	.84	.80	.76	.71	.68	.65	.58	.56	.54	.47	.46	.44	.39
2.0	.79	.72	.66	.72	.66	.61	.61	.56	.53	.50	.47	.44	.41	.38	.36	.31
3.0	.69	.61	.54	.63	.56	.51	.53	.48	.44	.44	.40	.37	.35	.33	.30	.26
4.0	.60	.52	.46	.56	.48	.43	.47	.41	.37	.39	.35	.31	.31	.28	.26	.22
5.0	.54	.45	.39	.50	.42	.36	.42	.36	.31	.35	.30	.27	.28	.25	.22	.19
6.0	.48	.40	.33	.44	.37	.31	.38	.32	.27	.31	.27	.23	.26	.22	.19	.16
7.0	.43	.35	.29	.40	.33	.27	.34	.28	.24	.29	.24	.20	.23	.20	.17	.14
8.0	.39	.31	.26	.36	.29	.24	.31	.25	.21	.26	.21	.18	.21	.18	.15	.13
9.0	.36	.28	.23	.33	.26	.22	.28	.23	.19	.24	.19	.16	.20	.16	.14	.11
10.0	.33	.25	.20	.31	.24	.19	.26	.21	.17	.22	.18	.15	.18	.15	.12	.10



C Range: 0 - 360DEG
 C Interval: 15.0DEG
 Test Speed: HIGH
 Temperature: 25.0DEG
 Operators: Alan Wang
 Test Date: 11 August 2023

γ Range: 0 - 180DEG
 γ Interval: 1.0DEG
 Test System: EVERFINE GO-R5000_V2 SYSTEM V2.00.416
 Humidity: 44.2%
 Test Distance: 2.500m [K=1.0391]
 Remarks:

WEC AND CCEC

Test:U:120.00V I:0.2389A P:28.310W PF:0.9876 Freq:60.00Hz Lamp Flux:2468.11x1 lm		
NAME: ASD-LVF26M-5D28BK/CH_5000K	TYPE:LED	WEIGHT:
SPEC.:N/A	DIM.:	SERIAL No.:
MFR.: ASD Lighting Corp	SUR.:	Shielding Angle:

ρcc	80%			70%			50%			30%			10%			0
ρw	50%	30%	10%	50%	30%	10%	50%	30%	10%	50%	30%	10%	50%	30%	10%	0
ρfc	20%			20%			20%			20%			20%			0
RCR	RCR:Room Cavity Ratio						Wall Exitance Coefficients(WEC)									
0.0																
1.0	.328	.187	.059	.306	.175	.055	.265	.152	.048	.226	.131	.042	.191	.111	.036	
2.0	.290	.159	.049	.270	.149	.046	.232	.129	.040	.197	.111	.035	.165	.093	.029	
3.0	.262	.139	.042	.243	.130	.039	.209	.113	.034	.177	.097	.030	.147	.081	.025	
4.0	.238	.124	.036	.221	.116	.034	.190	.101	.030	.160	.086	.026	.133	.072	.022	
5.0	.218	.111	.032	.203	.104	.030	.174	.090	.027	.146	.077	.023	.121	.065	.019	
6.0	.201	.101	.029	.187	.095	.027	.160	.082	.024	.135	.070	.021	.111	.059	.017	
7.0	.187	.092	.026	.174	.087	.025	.149	.075	.022	.125	.064	.019	.103	.054	.016	
8.0	.174	.085	.024	.162	.080	.023	.139	.069	.020	.117	.059	.017	.096	.049	.014	
9.0	.163	.079	.022	.151	.074	.021	.130	.064	.018	.109	.055	.016	.090	.046	.013	
10.0	.153	.073	.020	.142	.069	.019	.122	.060	.017	.103	.051	.015	.085	.043	.012	

ρcc	80%			70%			50%			30%			10%			0
ρw	50%	30%	10%	50%	30%	10%	50%	30%	10%	50%	30%	10%	50%	30%	10%	0
ρfc	20%			20%			20%			20%			20%			0
RCR	RCR:Room Cavity Ratio						Ceiling Cavity Exitance Coefficients(CCEC)									
0.0	.569	.569	.569	.486	.486	.486	.332	.332	.332	.191	.191	.191	.061	.061	.061	
1.0	.563	.538	.515	.482	.461	.443	.330	.317	.306	.190	.184	.178	.061	.059	.058	
2.0	.556	.516	.482	.476	.444	.417	.327	.307	.291	.188	.179	.171	.060	.058	.056	
3.0	.549	.501	.462	.471	.432	.400	.323	.300	.281	.187	.175	.166	.060	.057	.054	
4.0	.542	.489	.448	.465	.422	.389	.320	.294	.274	.185	.172	.162	.060	.056	.053	
5.0	.535	.479	.438	.460	.415	.381	.317	.290	.269	.183	.170	.160	.059	.056	.053	
6.0	.529	.472	.431	.454	.409	.376	.313	.286	.266	.182	.168	.158	.059	.055	.052	
7.0	.522	.466	.426	.449	.404	.372	.310	.283	.263	.180	.167	.157	.058	.055	.052	
8.0	.516	.461	.422	.445	.400	.368	.308	.281	.261	.179	.166	.156	.058	.054	.052	
9.0	.511	.456	.419	.440	.396	.366	.305	.278	.260	.178	.164	.155	.058	.054	.051	
10.0	.506	.452	.417	.436	.393	.364	.302	.276	.259	.176	.163	.154	.057	.054	.051	

C Range: 0 - 360DEG
 C Interval: 15.0DEG
 Test Speed: HIGH
 Temperature: 25.0DEG
 Operators: Alan Wang
 Test Date: 11 August 2023

γ Range: 0 - 180DEG
 γ Interval: 1.0DEG
 Test System: EVERFINE GO-R5000_V2 SYSTEM V2.00.416
 Humidity: 44.2%
 Test Distance: 2.500m [K=1.0391]
 Remarks:

UGR(Unified Glare Rating) Table

Test:U:120.00V I:0.2389A P:28.310W PF:0.9876 Freq:60.00Hz Lamp Flux:2468.11x1 lm										
NAME: ASD-LVF26M-5D28BK/CH_5000K					TYPE:LED			WEIGHT:		
SPEC.:N/A					DIM.:			SERIAL No.:		
MFR.: ASD Lighting Corp					SUR.:			Shielding Angle:		
ceiling/cavity	0.7	0.7	0.5	0.5	0.3	0.7	0.7	0.5	0.5	0.3
walls	0.5	0.3	0.5	0.3	0.3	0.5	0.3	0.5	0.3	0.3
working plane	0.2	0.2	0.2	0.2	0.2	0.2	0.2	0.2	0.2	0.2
Room dimensions	Viewed crosswise					Viewed endwise				
x = 2H y = 2H	14.3	15.3	15.1	16.1	17.2	16.3	17.3	17.2	18.2	19.3
3H	16.1	17.0	17.0	17.9	19.1	19.1	20.0	20.0	20.9	22.0
4H	17.0	17.8	17.9	18.7	19.9	20.6	21.4	21.5	22.4	23.5
6H	17.8	18.6	18.7	19.5	20.7	22.3	23.1	23.2	24.0	25.2
8H	18.1	18.9	19.0	19.8	21.0	23.3	24.0	24.2	24.9	26.1
12H	18.4	19.1	19.4	20.1	21.3	24.4	25.1	25.3	26.0	27.2
4H 2H	15.8	16.6	16.7	17.5	18.7	17.1	17.9	18.0	18.8	20.0
3H	18.1	18.8	19.0	19.7	20.9	20.1	20.8	21.0	21.7	23.0
4H	19.3	19.9	20.2	20.9	22.1	21.8	22.4	22.7	23.4	24.6
6H	20.4	21.0	21.4	21.9	23.2	23.7	24.2	24.6	25.2	26.5
8H	20.9	21.5	21.9	22.4	23.7	24.7	25.2	25.7	26.2	27.5
12H	21.4	21.9	22.4	22.9	24.2	25.9	26.4	26.9	27.4	28.7
8H 4H	20.5	21.1	21.5	22.0	23.3	22.4	22.9	23.3	23.9	25.2
6H	22.2	22.7	23.2	23.7	25.0	24.6	25.0	25.6	26.0	27.3
8H	23.1	23.5	24.1	24.5	25.8	25.8	26.2	26.8	27.2	28.5
12H	24.0	24.3	25.0	25.3	26.7	27.3	27.6	28.3	28.6	30.0
12H 4H	20.9	21.4	21.9	22.4	23.6	22.5	23.0	23.5	23.9	25.2
6H	22.8	23.2	23.8	24.2	25.6	24.8	25.2	25.8	26.2	27.5
8H	23.9	24.3	25.0	25.3	26.7	26.2	26.5	27.2	27.6	28.9
Variations with the observer position at spacings:										
S = 1.0H	+ 0.1 / - 0.1					+ 0.1 / - 0.1				
1.5H	+ 0.2 / - 0.3					+ 0.2 / - 0.3				
2.0H	+ 0.4 / - 0.5					+ 0.3 / - 0.4				

CIE Pub.117, 2468 lm Total Lamp Luminous Flux Corrected (8log(F/F0) = 3.1)
 Area: 0.08 m2

C Range: 0 - 360DEG
 C Interval: 15.0DEG
 Test Speed: HIGH
 Temperature: 25.0DEG
 Operators: Alan Wang
 Test Date: 11 August 2023

γ Range: 0 - 180DEG
 γ Interval: 1.0DEG
 Test System: EVERFINE GO-R5000_V2 SYSTEM V2.00.416
 Humidity: 44.2%
 Test Distance: 2.500m [K=1.0391]
 Remarks:

UTILIZATION FACTORS TABLE

Test:U:120.00V I:0.2389A P:28.310W PF:0.9876 Freq:60.00Hz Lamp Flux:2468.11x1 lm		
NAME: ASD-LVF26M-5D28BK/CH_5000K	TYPE:LED	WEIGHT:
SPEC.:N/A	DIM.:	SERIAL No.:
MFR.: ASD Lighting Corp	SUR.:	Shielding Angle:

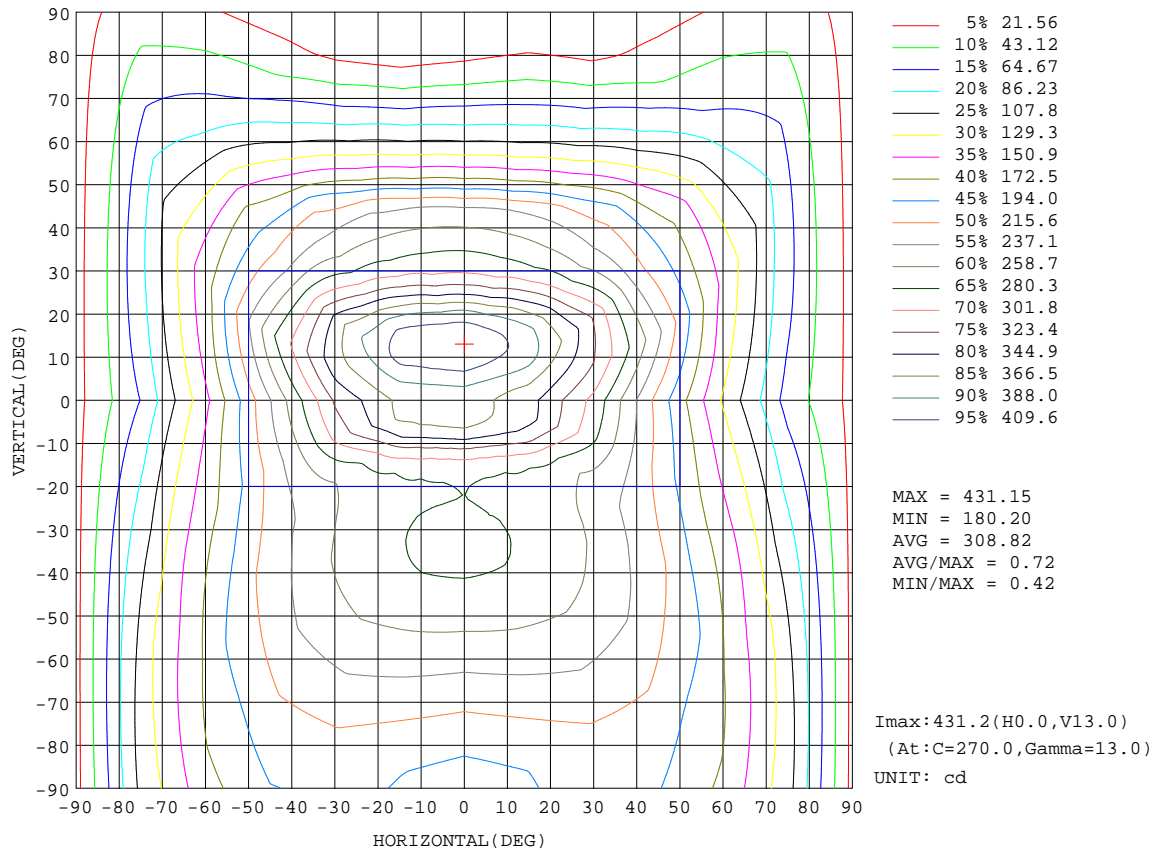
REFLECTANCE										
Ceiling	0.8	0.8	0.8	0.7	0.7	0.7	0.5	0.5	0.5	0
Walls	0.7	0.5	0.3	0.7	0.5	0.3	0.7	0.5	0.3	0
Working plane	0.2	0.2	0.2	0.2	0.2	0.2	0.2	0.2	0.2	0
ROOM INDEX	UTILIZATION FACTORS(PERCENT) k(RI) x RCR = 5									
k = 0.60	42	30	24	39	29	23	35	27	21	14
0.80	51	39	31	48	37	30	42	33	27	18
1.00	58	46	38	55	44	36	48	40	33	21
1.25	65	53	45	61	50	43	53	44	38	25
1.50	70	59	51	65	55	48	56	48	43	27
2.00	78	67	59	72	63	56	62	55	49	31
2.50	82	72	65	76	68	61	65	59	53	33
3.00	86	77	70	79	72	66	67	62	57	35
4.00	90	83	77	83	77	72	71	66	62	38
5.00	93	87	81	86	81	76	73	69	65	40
ROOM INDEX	UF(total)									Direct
According to DIN EN 13032-2 2004			Suspended				SHRNOM = 1.25			

C Range: 0 - 360DEG
 C Interval: 15.0DEG
 Test Speed: HIGH
 Temperature: 25.0DEG
 Operators: Alan Wang
 Test Date: 11 August 2023

γ Range: 0 - 180DEG
 γ Interval: 1.0DEG
 Test System: EVERFINE GO-R5000_V2 SYSTEM V2.00.416
 Humidity: 44.2%
 Test Distance: 2.500m [K=1.0391]
 Remarks:

ISOCANDELA DIAGRAM

Test:U:120.00V I:0.2389A P:28.310W PF:0.9876 Freq:60.00Hz Lamp Flux:2468.11x1 lm		
NAME: ASD-LVF26M-5D28BK/CH_5000K	TYPE:LED	WEIGHT:
SPEC.:N/A	DIM.:	SERIAL No.:
MFR.: ASD Lighting Corp	SUR.:	Shielding Angle:

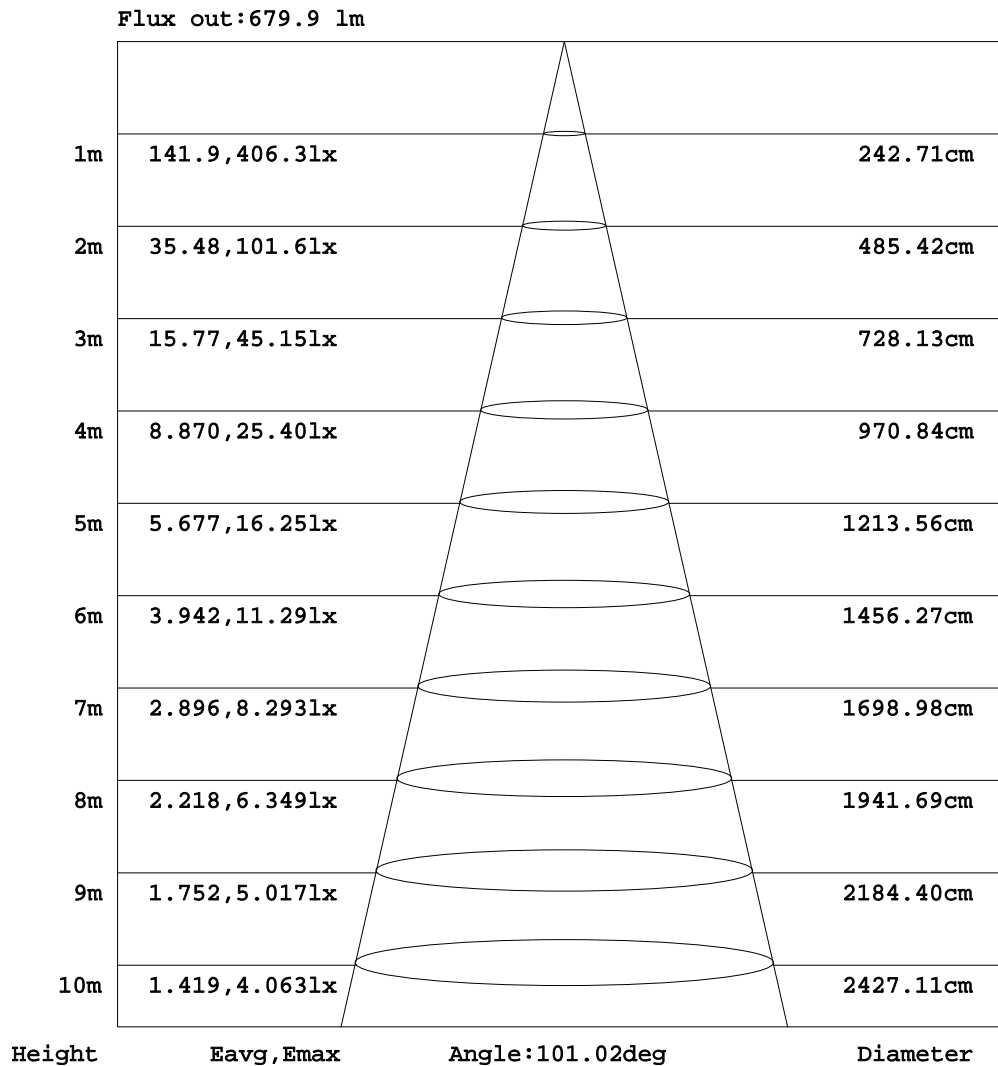


C Range: 0 - 360DEG
 C Interval: 15.0DEG
 Test Speed: HIGH
 Temperature: 25.0DEG
 Operators: Alan Wang
 Test Date: 11 August 2023

γ Range: 0 - 180DEG
 γ Interval: 1.0DEG
 Test System: EVERFINE GO-R5000_V2 SYSTEM V2.00.416
 Humidity: 44.2%
 Test Distance: 2.500m [K=1.0391]
 Remarks:

AAI Figure

Test:U:120.00V I:0.2389A P:28.310W PF:0.9876 Freq:60.00Hz Lamp Flux:2468.11x1 lm		
NAME: ASD-LVF26M-5D28BK/CH_5000K	TYPE:LED	WEIGHT:
SPEC.:N/A	DIM.:	SERIAL No.:
MFR.: ASD Lighting Corp	SUR.:	Shielding Angle:



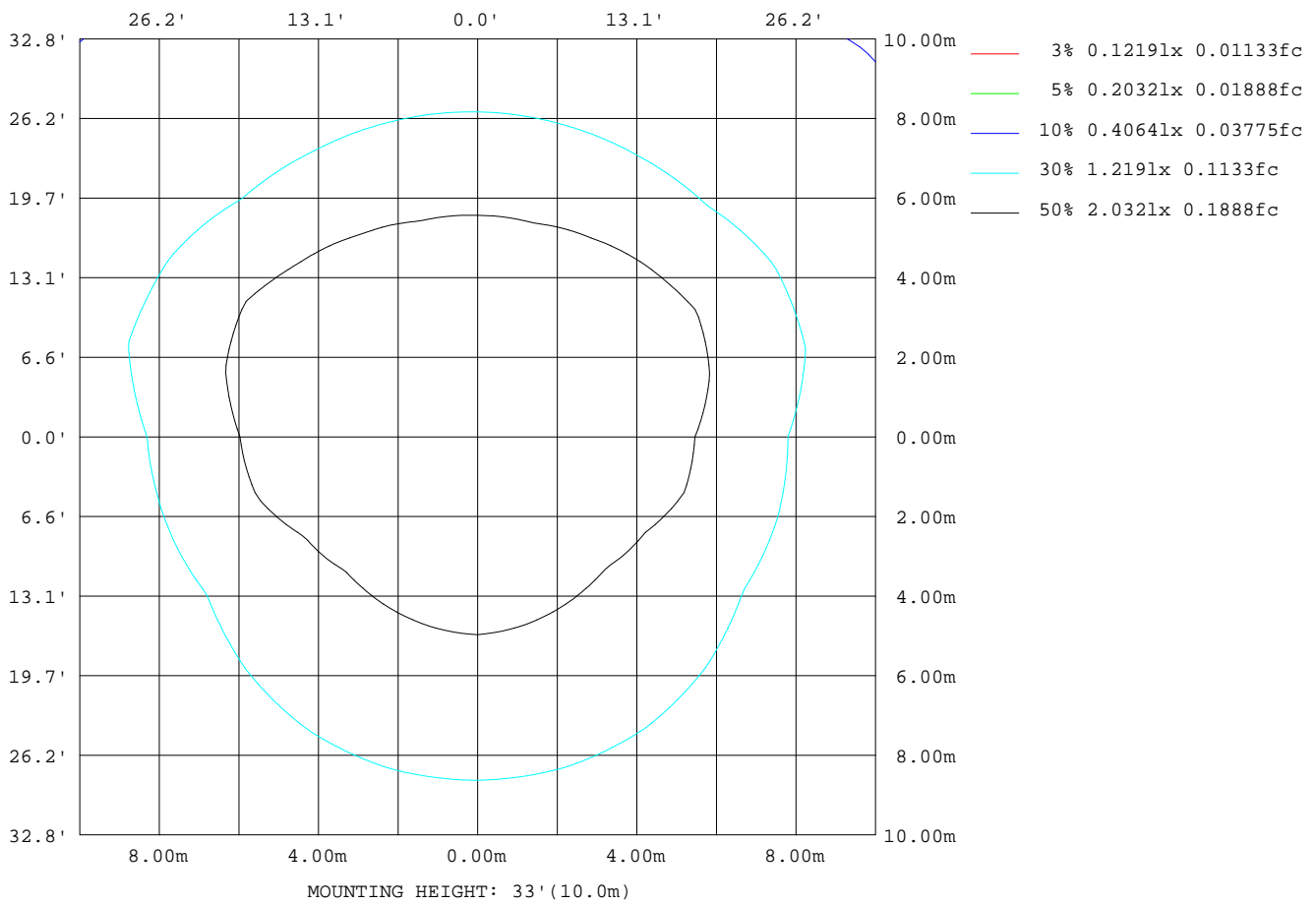
Note:The Curves indicate the illuminated area and the average illumination when the luminaire is at different distance.

C Range: 0 - 360DEG
 C Interval: 15.0DEG
 Test Speed: HIGH
 Temperature: 25.0DEG
 Operators: Alan Wang
 Test Date: 11 August 2023

γ Range: 0 - 180DEG
 γ Interval: 1.0DEG
 Test System: EVERFINE GO-R5000_V2 SYSTEM V2.00.416
 Humidity: 44.2%
 Test Distance: 2.500m [K=1.0391]
 Remarks:

ISOLUX DIAGRAM

Test:U:120.00V I:0.2389A P:28.310W PF:0.9876 Freq:60.00Hz Lamp Flux:2468.11x1 lm		
NAME: ASD-LVF26M-5D28BK/CH_5000K	TYPE:LED	WEIGHT:
SPEC.:N/A	DIM.:	SERIAL No.:
MFR.: ASD Lighting Corp	SUR.:	Shielding Angle:



C Range: 0 - 360DEG
 C Interval: 15.0DEG
 Test Speed: HIGH
 Temperature: 25.0DEG
 Operators: Alan Wang
 Test Date: 11 August 2023

γ Range: 0 - 180DEG
 γ Interval: 1.0DEG
 Test System: EVERFINE GO-R5000_V2 SYSTEM V2.00.416
 Humidity: 44.2%
 Test Distance: 2.500m [K=1.0391]
 Remarks:

LED Avg.L Report

Test:U:120.00V I:0.2389A P:28.310W PF:0.9876 Freq:60.00Hz Lamp Flux:2468.11x1 lm		
NAME: ASD-LVF26M-5D28BK/CH_5000K	TYPE:LED	WEIGHT:
SPEC.:N/A	DIM.:	SERIAL No.:
MFR.: ASD Lighting Corp	SUR.:	Shielding Angle:

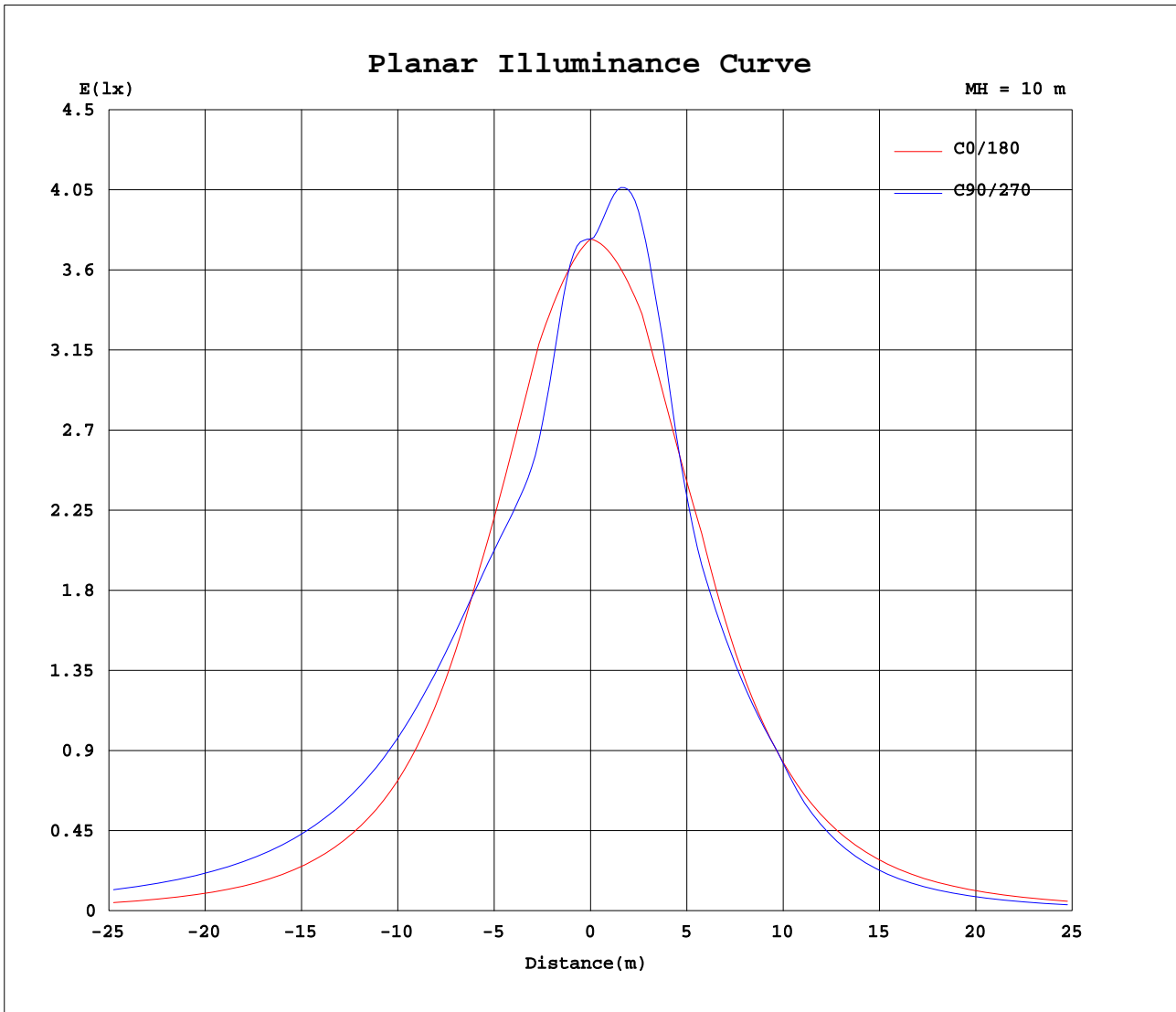
AvgL	cd/m2
L_0~180(65)av	3275
L_0~180(75)av	2929
L_0~180(85)av	4332
L_90~270(65)av	4624
L_90~270(75)av	5900
L_90~270(85)av	13650
L_45(65)av	5194
L_45(75)av	6666
L_45(85)av	16130

Standard: GB/T 29293-2012

C Range: 0 - 360DEG
C Interval: 15.0DEG
Test Speed: HIGH
Temperature: 25.0DEG
Operators: Alan Wang
Test Date: 11 August 2023

γ Range: 0 - 180DEG
 γ Interval: 1.0DEG
Test System: EVERFINE GO-R5000_V2 SYSTEM V2.00.416
Humidity: 44.2%
Test Distance: 2.500m [K=1.0391]
Remarks:

Planar Illuminance Curve



C Range: 0 - 360DEG
 C Interval: 15.0DEG
 Test Speed: HIGH
 Temperature: 25.0DEG
 Operators: Alan Wang
 Test Date: 11 August 2023

γ Range: 0 - 180DEG
 γ Interval: 1.0DEG
 Test System: EVERFINE GO-R5000_V2 SYSTEM V2.00.416
 Humidity: 44.2%
 Test Distance: 2.500m [K=1.0391]
 Remarks:

LUMINOUS DISTRIBUTION INTENSITY DATA

Test:U:120.00V I:0.2389A P:28.310W PF:0.9876 Freq:60.00Hz Lamp Flux:2468.11x1 lm		
NAME: ASD-LVF26M-5D28BK/CH_5000K	TYPE:LED	WEIGHT:
SPEC.:N/A	DIM.:	SERIAL No.:
MFR.: ASD Lighting Corp	SUR.:	Shielding Angle:

Table--1

UNIT: cd

C(DEG) γ (DEG)	0	15	30	45	60	75	90	105	120	135	150	165	180	195	210	225	240	255	270
0	377	377	377	377	377	377	377	377	377	377	377	377	377	377	377	377	377	377	377
5	369	370	371	371	371	372	373	373	374	375	376	376	376	378	383	389	394	398	399
10	361	362	360	352	342	336	336	338	346	359	370	374	374	381	396	409	418	423	425
15	353	354	341	318	301	294	293	295	305	325	353	371	372	387	408	421	427	426	427
20	334	334	312	288	278	279	281	280	281	294	323	354	357	381	409	421	409	397	395
25	315	312	283	271	275	279	282	280	278	276	293	333	341	372	398	393	370	344	340
30	295	290	262	265	276	281	285	283	278	269	271	311	326	361	378	352	321	301	299
35	266	264	251	263	275	282	285	284	278	267	258	283	296	339	350	307	286	281	279
40	236	239	241	261	273	280	282	281	276	265	248	256	266	313	310	273	265	262	259
45	207	217	234	256	270	275	275	276	272	260	240	232	236	286	269	250	246	242	234
50	180	198	227	251	264	266	266	267	267	255	233	210	206	253	233	229	220	193	185
55	153	181	219	245	256	257	256	258	258	249	224	191	175	219	209	207	172	150	143
60	126	166	211	237	247	246	244	247	249	240	215	174	145	184	187	164	132	113	108
65	103	155	203	230	239	236	233	237	240	232	206	161	118	159	162	126	98.3	83.6	80.1
70	79.5	144	195	221	229	225	221	226	230	223	197	149	91.8	136	126	93.2	69.1	54.6	56.6
75	56.0	134	186	213	219	214	209	215	221	214	188	137	65.3	113	91.6	66.0	44.8	33.9	35.1
80	42.4	128	180	205	210	204	199	205	212	206	180	129	48.4	86.8	65.5	42.1	22.9	9.84	16.5
85	28.8	122	174	200	204	196	190	196	204	200	173	121	31.6	59.4	44.9	26.4	8.49	0.51	0.29
90	15.2	116	168	195	200	193	187	193	199	193	165	113	14.8	31.8	25.0	11.6	1.96	0.36	0.26
95	31.4	124	176	202	207	199	193	198	205	199	171	118	28.8	54.6	40.7	22.4	5.18	1.30	0.25
100	47.6	131	183	209	215	208	202	207	212	204	176	123	42.9	77.6	56.9	34.1	17.4	13.5	12.7
105	63.7	138	191	218	224	218	213	217	221	212	183	128	57.0	101	78.9	55.7	39.0	33.1	31.5
110	89.9	150	200	226	234	229	224	228	230	220	191	139	81.1	121	110	80.7	61.6	53.3	51.3
115	116	161	209	235	244	240	236	239	239	227	198	150	105	141	143	110	87.5	76.9	73.8
120	142	174	217	243	252	251	248	249	248	235	206	161	129	163	169	146	118	104	101
125	172	192	226	251	261	261	258	258	255	242	214	179	157	194	189	185	155	138	134
130	202	213	234	256	269	270	268	267	263	247	221	199	184	225	209	211	198	179	174
135	232	236	241	261	274	277	276	274	267	251	229	222	211	255	235	229	229	225	220
140	263	261	250	265	276	281	281	278	270	255	237	246	241	282	270	248	247	247	248
145	293	289	262	267	277	282	283	279	270	257	249	273	270	309	308	273	265	264	266
150	324	318	280	270	277	280	281	276	270	261	268	300	300	333	338	311	291	281	284
155	340	339	306	281	277	277	278	274	271	272	296	321	319	350	365	353	331	315	316
160	356	358	339	308	287	281	280	278	282	301	329	342	338	365	387	389	374	366	368
165	372	373	366	343	321	309	306	307	317	337	355	359	358	377	395	405	406	405	409
170	375	374	376	371	363	357	356	355	360	366	368	365	365	378	392	404	412	418	423
175	377	376	377	378	379	380	381	379	377	375	372	371	372	378	385	392	398	403	406
180	380	380	380	380	380	380	380	380	380	380	380	380	380	380	380	380	380	380	380

C Range: 0 - 360DEG
 C Interval: 15.0DEG
 Test Speed: HIGH
 Temperature: 25.0DEG
 Operators: Alan Wang
 Test Date: 11 August 2023

γ Range: 0 - 180DEG
 γ Interval: 1.0DEG
 Test System: EVERFINE GO-R5000_V2 SYSTEM V2.00.416
 Humidity: 44.2%
 Test Distance: 2.500m [K=1.0391]
 Remarks:

LUMINOUS DISTRIBUTION INTENSITY DATA

Test:U:120.00V I:0.2389A P:28.310W PF:0.9876 Freq:60.00Hz Lamp Flux:2468.11x1 lm		
NAME: ASD-LVF26M-5D28BK/CH_5000K	TYPE:LED	WEIGHT:
SPEC.:N/A	DIM.:	SERIAL No.:
MFR.: ASD Lighting Corp	SUR.:	Shielding Angle:

Table--2

UNIT: cd

C(DEG) γ (DEG)	285	300	315	330	345														
0	377	377	377	377	377														
5	396	391	385	378	372														
10	419	411	400	385	369														
15	421	417	407	391	369														
20	392	397	402	387	357														
25	340	359	375	371	343														
30	298	311	335	350	328														
35	277	278	292	322	305														
40	258	257	260	286	280														
45	238	239	237	247	253														
50	189	208	218	216	224														
55	146	163	193	194	194														
60	111	125	152	173	163														
65	84.1	92.8	115	146	141														
70	61.2	66.6	84.5	113	121														
75	42.6	43.8	58.8	81.2	100														
80	24.6	22.3	36.4	58.7	77.5														
85	5.45	8.81	23.8	41.9	54.8														
90	0.33	2.34	12.1	25.7	32.1														
95	1.19	6.22	24.2	43.4	57.8														
100	13.2	19.1	37.3	61.7	83.6														
105	33.7	41.3	60.0	85.6	109														
110	54.1	64.5	86.3	119	131														
115	78.3	91.4	117	154	153														
120	106	123	154	180	177														
125	140	161	196	200	211														
130	182	206	221	222	244														
135	229	236	239	252	276														
140	251	254	260	291	305														
145	268	273	287	332	333														
150	286	300	327	362	357														
155	320	342	370	386	371														
160	371	385	405	404	382														
165	410	415	416	408	391														
170	421	417	411	401	387														
175	404	401	396	389	383														
180	380	380	380	380	380														

C Range: 0 - 360DEG
 C Interval: 15.0DEG
 Test Speed: HIGH
 Temperature: 25.0DEG
 Operators: Alan Wang
 Test Date: 11 August 2023

γ Range: 0 - 180DEG
 γ Interval: 1.0DEG
 Test System: EVERFINE GO-R5000_V2 SYSTEM V2.00.416
 Humidity: 44.2%
 Test Distance: 2.500m [K=1.0391]
 Remarks: