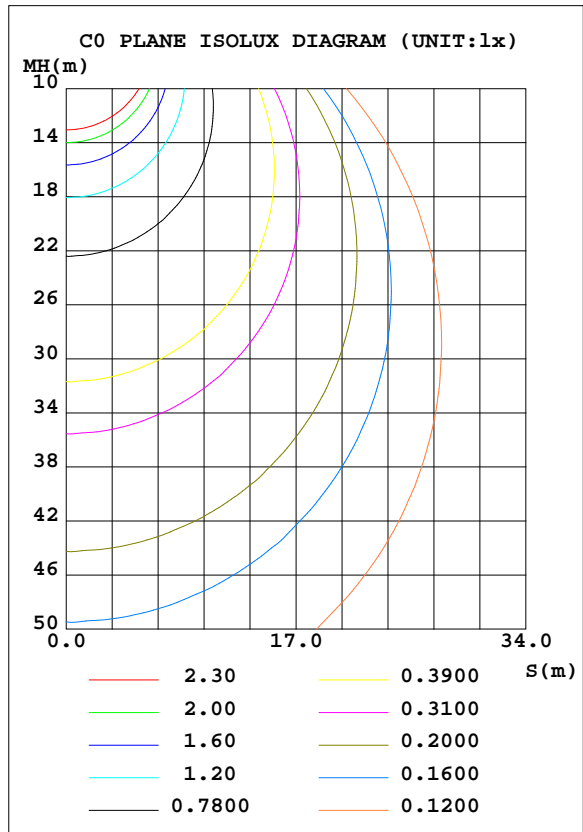
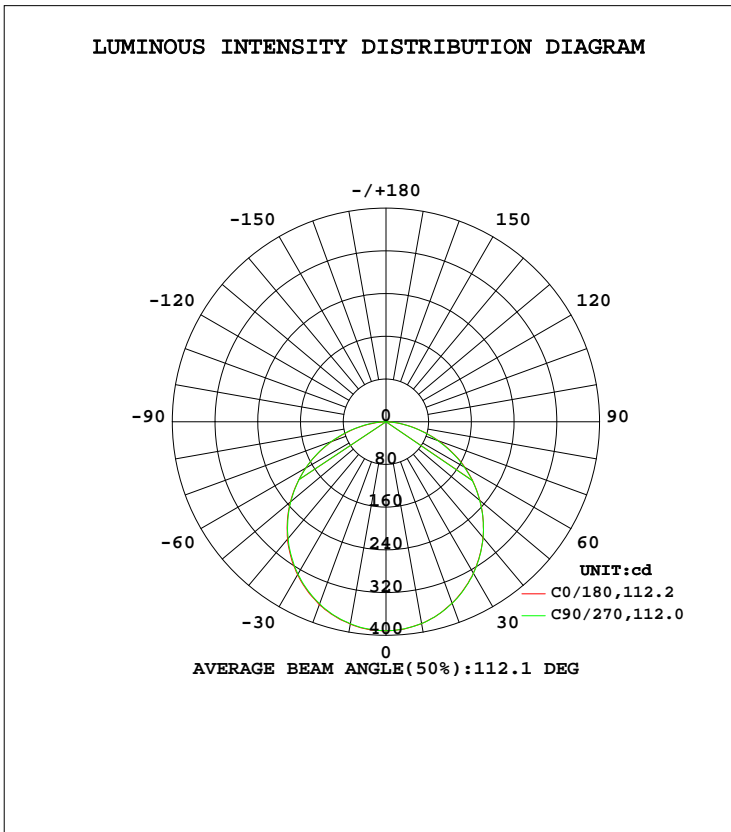


LUMINAIRE PHOTOMETRIC TEST REPORT

Test:U:120.0V I:0.1211A P:14.25W PF:0.9806 Lamp Flux:1111.49x1 lm		
NAME: ASD-MPR-7D15CC-EM-WH_5000K	TYPE:N/A	WEIGHT:N/A
SPEC.:N/A	DIM.: N/A	SERIAL No.:N/A
MFR.: ASD Lighting Corp	SUR.:N/A	Shielding Angle:N/A

DATA OF LAMP		PHOTOMETRIC DATA Eff: 78.00 lm/W			
MODEL ASD-MPR-7D15CC-EM-WH_5000K		$I_{max}(cd)$	392.3	S/MH(C0/180)	1.24
NOMINAL POWER(W)		LOR(%)	100.0	S/MH(C90/270)	1.25
RATED VOLTAGE(V)	120	TOTAL FLUX(lm)	1111.5	η UP, DN(C0-180)	0.1,50.4
NOMINAL FLUX(lm)	1111.49	CIE CLASS	DIRECT	η UP, DN(C180-360)	0.0,49.5
LAMPS INSIDE	1	η up(%)	0.1	CIBSE SHR NOM	1.25
TEST VOLTAGE(V)	120	η down(%)	99.9	CIBSE SHR MAX	1.35



C Range: 0 - 360DEG
 C Interval: 22.5DEG
 Test Speed: HIGH
 Temperature:25.4DEG
 Operators:Carl
 Test Date:2022-06-02

γ Range: 0 - 180DEG
 γ Interval: 1.0DEG
 Test System:EVERFINE GO-R5000_V2 SYSTEM V2.0.351
 Humidity:39%
 Test Distance:2.526m [K=1.0000]
 Remarks:

ZONAL FLUX DIAGRAM

ZONAL FLUX DIAGRAM:

γ	C0	C45	C90	C135	C180	C225	C270	C315	γ	Φ zone	Φ total	%lum,lamp
10	384.8	384.6	384.2	384.1	383.7	383.7	383.7	384.4	0- 10	37.01	37.01	3.33,3.33
20	364.9	363.8	362.8	362.9	361.6	361.1	361.9	362.8	10- 20	105.8	142.8	12.9,12.9
30	331.1	330.4	329.6	328.7	327.4	327.0	327.6	328.8	20- 30	160.0	302.9	27.2,27.2
40	286.7	286.3	285.2	284.9	282.8	282.1	283.0	284.5	30- 40	192.5	495.4	44.6,44.6
50	233.8	233.4	232.8	232.6	229.7	228.6	229.2	230.8	40- 50	199.6	695.0	62.5,62.5
60	173.8	173.9	173.5	173.2	170.3	169.0	169.0	170.5	50- 60	180.7	875.7	78.8,78.8
70	107.7	109.0	109.2	109.6	105.0	103.9	103.1	104.2	60- 70	137.9	1014	91.2,91.2
80	42.13	44.18	45.73	45.29	40.87	40.23	40.46	40.28	70- 80	77.91	1091	98.2,98.2
90	0.0753	0.1122	0.1114	0.1386	0.0238	0.0195	0.0202	0.0191	80- 90	18.82	1110	99.9,99.9
100	0.0984	0.1080	0.0988	0.1129	0.0390	0.0531	0.0424	0.0534	90-100	0.0630	1110	99.9,99.9
110	0.1162	0.1214	0.1185	0.1252	0.0687	0.0774	0.0711	0.0747	100-110	0.0907	1110	99.9,99.9
120	0.1538	0.1535	0.1553	0.1590	0.1071	0.1068	0.1039	0.1058	110-120	0.1106	1111	99.9,99.9
130	0.2257	0.2243	0.2331	0.2334	0.1534	0.1503	0.1457	0.1478	120-130	0.1409	1111	99.9,99.9
140	0.3545	0.3753	0.3808	0.3722	0.1998	0.2004	0.1973	0.1969	130-140	0.1790	1111	99.9,99.9
150	0.5110	0.5628	0.5705	0.5530	0.2386	0.2503	0.2542	0.2454	140-150	0.2153	1111	100,100
160	0.6530	0.6715	0.6798	0.6810	0.3207	0.3149	0.3178	0.3025	150-160	0.2080	1111	100,100
170	0.6211	0.6151	0.6234	0.6294	0.3874	0.3631	0.3650	0.3683	160-170	0.1422	1111	100,100
180	0.5206	0.4916	0.4833	0.5235	0.5213	0.5079	0.4810	0.4985	170-180	0.0479	1111	100,100
DEG	LUMINOUS INTENSITY:cd									UNIT:lm		

Conical surface Flux(90deg): 595.97 lm

%lum = 53.6%

%lamp = 53.6%

Conical surface Flux(120deg): 875.71 lm

%lum = 78.8%

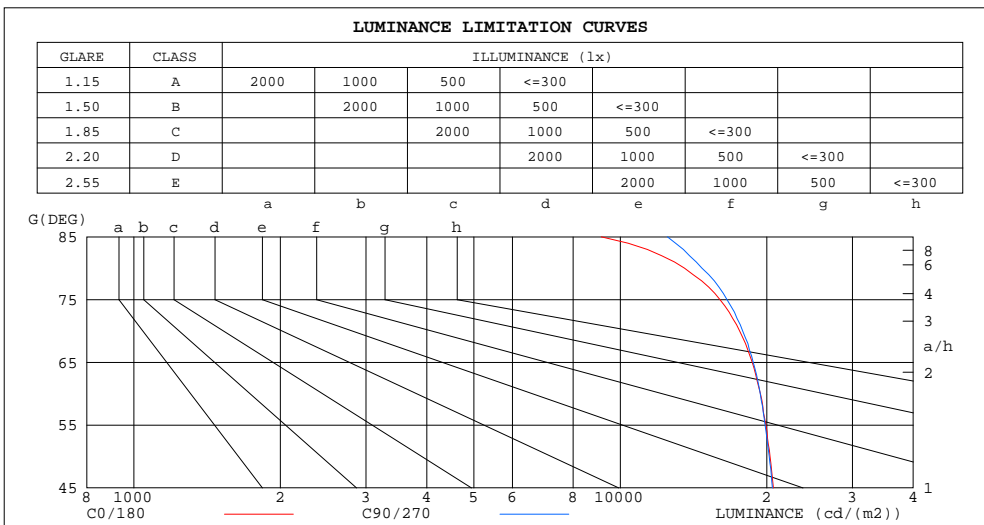
%lamp = 78.8%

C Range: 0 - 360DEG
 C Interval: 22.5DEG
 Test Speed: HIGH
 Temperature:25.4DEG
 Operators:Carl
 Test Date:2022-06-02

γ Range: 0 - 180DEG
 γ Interval: 1.0DEG
 Test System:EVERFINE GO-R5000_V2 SYSTEM V2.0.351
 Humidity:39%
 Test Distance:2.526m [K=1.0000]
 Remarks:

LUMINANCE LIMITATION CURVES

Test:U:120.0V I:0.1211A P:14.25W PF:0.9806 Lamp Flux:1111.49x1 lm		
NAME: ASD-MPR-7D15CC-EM-WH_5000K	TYPE:N/A	WEIGHT:N/A
SPEC.:N/A	DIM.: N/A	SERIAL No.:N/A
MFR.: ASD Lighting Corp	SUR.:N/A	Shielding Angle:N/A



LUMINANCE cd/(m2)		
G (DEG)	C0/180	C90/270
85	9139	12494
80	13550	14718
75	16023	16568
70	17592	17848
65	18665	18757
60	19413	19394
55	19910	19842
50	20316	20237
45	20637	20539

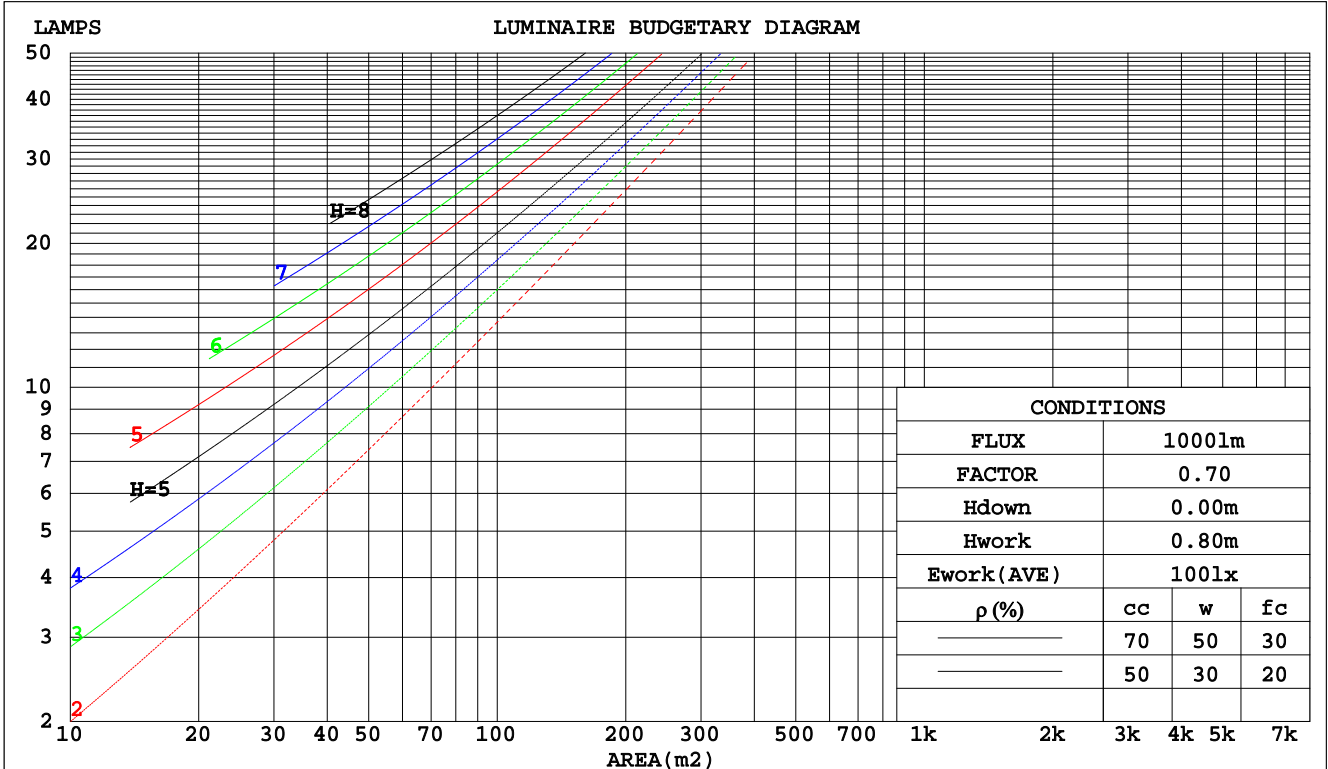
C Range: 0 - 360DEG
 C Interval: 22.5DEG
 Test Speed: HIGH
 Temperature: 25.4DEG
 Operators: Carl
 Test Date: 2022-06-02

γ Range: 0 - 180DEG
 γ Interval: 1.0DEG
 Test System: EVERFINE GO-R5000_V2 SYSTEM V2.0.351
 Humidity: 39%
 Test Distance: 2.526m [K=1.0000]
 Remarks:

CU AND LUMINAIRE BUDGETARY ESTIMATE DIAGRAM

Test:U:120.0V I:0.1211A P:14.25W PF:0.9806 Lamp Flux:1111.49x1 lm		
NAME: ASD-MPR-7D15CC-EM-WH_5000K	TYPE:N/A	WEIGHT:N/A
SPEC.:N/A	DIM.: N/A	SERIAL No.:N/A
MFR.: ASD Lighting Corp	SUR.:N/A	Shielding Angle:N/A

pcc	80%			70%			50%			30%			10%			0
pw	50%	30%	10%	50%	30%	10%	50%	30%	10%	50%	30%	10%	50%	30%	10%	0
pfc	20%			20%			20%			20%			20%			0
RCR	RCR:Room Cavity Ratio						Coefficients of Utilization(CU)									
0.0	1.19	1.19	1.19	1.16	1.16	1.16	1.11	1.11	1.11	1.06	1.06	1.06	1.02	1.02	1.02	.00
1.0	1.04	.00	.96	1.02	.98	.94	.97	.94	.91	.93	.91	.88	.90	.88	.86	.84
2.0	.90	.84	.78	.89	.82	.77	.85	.80	.75	.82	.77	.73	.79	.75	.72	.70
3.0	.79	.71	.65	.78	.70	.64	.75	.68	.63	.72	.66	.62	.69	.65	.61	.58
4.0	.70	.61	.55	.69	.61	.54	.66	.59	.54	.64	.58	.53	.62	.56	.52	.50
5.0	.63	.54	.47	.62	.53	.47	.59	.52	.46	.57	.51	.46	.56	.50	.45	.43
6.0	.56	.47	.41	.56	.47	.41	.54	.46	.40	.52	.45	.40	.50	.44	.40	.38
7.0	.51	.42	.36	.50	.42	.36	.49	.41	.36	.47	.41	.35	.46	.40	.35	.33
8.0	.47	.38	.32	.46	.38	.32	.45	.37	.32	.43	.37	.32	.42	.36	.32	.30
9.0	.43	.35	.29	.42	.34	.29	.41	.34	.29	.40	.33	.29	.39	.33	.28	.27
10.0	.40	.32	.26	.39	.31	.26	.38	.31	.26	.37	.31	.26	.36	.30	.26	.24



C Range: 0 - 360DEG
 C Interval: 22.5DEG
 Test Speed: HIGH
 Temperature:25.4DEG
 Operators:Carl
 Test Date:2022-06-02

γ Range: 0 - 180DEG
 γ Interval: 1.0DEG
 Test System:EVERFINE GO-R5000_V2 SYSTEM V2.0.351
 Humidity:39%
 Test Distance:2.526m [K=1.0000]
 Remarks:

WEC AND CCEC

Test:U:120.0V I:0.1211A P:14.25W PF:0.9806 Lamp Flux:1111.49x1 lm		
NAME: ASD-MPR-7D15CC-EM-WH_5000K	TYPE:N/A	WEIGHT:N/A
SPEC.:N/A	DIM.: N/A	SERIAL No.:N/A
MFR.: ASD Lighting Corp	SUR.:N/A	Shielding Angle:N/A

ρcc	80%			70%			50%			30%			10%			0
ρw	50%	30%	10%	50%	30%	10%	50%	30%	10%	50%	30%	10%	50%	30%	10%	0
ρfc	20%			20%			20%			20%			20%			0
RCR	RCR:Room Cavity Ratio						Wall Exitance Coefficients(WEC)									
0.0																
1.0	.308	.175	.056	.301	.172	.055	.288	.165	.053	.275	.159	.051	.264	.153	.049	
2.0	.291	.159	.049	.285	.157	.048	.273	.152	.047	.262	.147	.046	.252	.143	.045	
3.0	.270	.143	.043	.264	.141	.043	.254	.137	.042	.244	.134	.041	.235	.130	.040	
4.0	.249	.129	.038	.244	.128	.038	.235	.125	.037	.226	.122	.037	.218	.119	.036	
5.0	.230	.117	.034	.226	.116	.034	.218	.113	.033	.210	.111	.033	.203	.108	.033	
6.0	.214	.107	.031	.210	.106	.030	.202	.104	.030	.196	.102	.030	.189	.100	.030	
7.0	.199	.098	.028	.195	.097	.028	.189	.095	.027	.183	.094	.027	.177	.092	.027	
8.0	.186	.091	.026	.183	.090	.025	.177	.088	.025	.171	.087	.025	.166	.085	.025	
9.0	.174	.084	.024	.171	.083	.023	.166	.082	.023	.161	.081	.023	.156	.079	.023	
10.0	.164	.078	.022	.161	.078	.022	.156	.077	.022	.152	.075	.021	.148	.074	.021	

ρcc	80%			70%			50%			30%			10%			0
ρw	50%	30%	10%	50%	30%	10%	50%	30%	10%	50%	30%	10%	50%	30%	10%	0
ρfc	20%			20%			20%			20%			20%			0
RCR	RCR:Room Cavity Ratio						Ceiling Cavity Exitance Coefficients(CCEC)									
0.0	.191	.191	.191	.163	.163	.163	.112	.112	.112	.064	.064	.064	.020	.020	.020	
1.0	.181	.157	.135	.155	.135	.116	.106	.093	.081	.061	.054	.047	.020	.017	.015	
2.0	.173	.133	.099	.148	.114	.086	.102	.079	.060	.059	.046	.035	.019	.015	.011	
3.0	.165	.115	.075	.142	.099	.065	.097	.069	.046	.056	.040	.027	.018	.013	.009	
4.0	.158	.102	.059	.135	.088	.051	.093	.061	.036	.054	.036	.021	.017	.012	.007	
5.0	.150	.091	.048	.129	.079	.042	.089	.055	.030	.051	.032	.018	.017	.011	.006	
6.0	.143	.083	.040	.123	.072	.035	.085	.050	.025	.049	.030	.015	.016	.010	.005	
7.0	.136	.076	.034	.117	.066	.030	.081	.046	.021	.047	.027	.013	.015	.009	.004	
8.0	.130	.070	.030	.112	.061	.026	.077	.043	.018	.045	.025	.011	.015	.008	.004	
9.0	.124	.065	.026	.107	.057	.023	.074	.040	.016	.043	.024	.010	.014	.008	.003	
10.0	.118	.061	.023	.102	.053	.020	.071	.037	.014	.041	.022	.009	.013	.007	.003	

C Range: 0 - 360DEG
 C Interval: 22.5DEG
 Test Speed: HIGH
 Temperature:25.4DEG
 Operators:Carl
 Test Date:2022-06-02

γ Range: 0 - 180DEG
 γ Interval: 1.0DEG
 Test System:EVERFINE GO-R5000_V2 SYSTEM V2.0.351
 Humidity:39%
 Test Distance:2.526m [K=1.0000]
 Remarks:

UGR(Unified Glare Rating) Table

Test:U:120.0V I:0.1211A P:14.25W PF:0.9806 Lamp Flux:1111.49x1 lm		
NAME: ASD-MPR-7D15CC-EM-WH_5000K	TYPE:N/A	WEIGHT:N/A
SPEC.:N/A	DIM.: N/A	SERIAL No.:N/A
MFR.: ASD Lighting Corp	SUR.:N/A	Shielding Angle:N/A

ceiling/cavity	0.7	0.7	0.5	0.5	0.3	0.7	0.7	0.5	0.5	0.3
walls	0.5	0.3	0.5	0.3	0.3	0.5	0.3	0.5	0.3	0.3
working plane	0.2	0.2	0.2	0.2	0.2	0.2	0.2	0.2	0.2	0.2
Room dimensions	Viewed crosswise					Viewed endwise				
x = 2H y = 2H	23.3	24.8	23.6	25.0	25.3	23.3	24.8	23.6	25.0	25.2
3H	24.8	26.3	25.1	26.5	26.7	24.9	26.3	25.2	26.5	26.7
4H	25.4	26.8	25.7	27.0	27.3	25.5	26.8	25.8	27.1	27.3
6H	25.8	27.1	26.2	27.4	27.6	25.9	27.2	26.2	27.4	27.7
8H	25.9	27.1	26.3	27.4	27.7	26.0	27.3	26.4	27.5	27.8
12H	26.0	27.1	26.3	27.4	27.7	26.1	27.3	26.5	27.6	27.9
4H 2H	23.9	25.3	24.3	25.5	25.8	23.9	25.3	24.3	25.5	25.8
3H	25.6	26.8	26.0	27.1	27.4	25.7	26.8	26.0	27.1	27.4
4H	26.4	27.4	26.7	27.8	28.1	26.4	27.5	26.8	27.8	28.1
6H	26.9	27.8	27.3	28.2	28.5	27.0	27.9	27.4	28.3	28.6
8H	27.0	27.9	27.4	28.3	28.6	27.1	28.0	27.6	28.4	28.8
12H	27.1	27.9	27.5	28.3	28.7	27.3	28.1	27.7	28.5	28.9
8H 4H	26.6	27.5	27.0	27.9	28.3	26.7	27.6	27.1	27.9	28.3
6H	27.3	28.0	27.7	28.4	28.8	27.4	28.1	27.8	28.5	28.9
8H	27.5	28.1	27.9	28.6	29.0	27.6	28.3	28.1	28.7	29.2
12H	27.6	28.2	28.1	28.6	29.1	27.8	28.4	28.3	28.8	29.3
12H 4H	26.6	27.4	27.1	27.8	28.2	26.7	27.5	27.1	27.9	28.3
6H	27.3	28.0	27.8	28.4	28.9	27.4	28.1	27.9	28.5	28.9
8H	27.6	28.1	28.1	28.6	29.1	27.7	28.3	28.2	28.7	29.2
Variations with the observer position at spacings:										
S = 1.0H	+ 0.2 / - 0.2					+ 0.2 / - 0.2				
1.5H	+ 0.2 / - 0.3					+ 0.2 / - 0.3				
2.0H	+ 0.2 / - 0.3					+ 0.2 / - 0.3				

CIE Pub.117 Corrected 1111 lm Total Lamp Luminous Flux.(8log(F/F0) = 0.4)

C Range: 0 - 360DEG
 C Interval: 22.5DEG
 Test Speed: HIGH
 Temperature:25.4DEG
 Operators:Carl
 Test Date:2022-06-02

γ Range: 0 - 180DEG
 γ Interval: 1.0DEG
 Test System:EVERFINE GO-R5000_V2 SYSTEM V2.0.351
 Humidity:39%
 Test Distance:2.526m [K=1.0000]
 Remarks:

UTILIZATION FACTORS TABLE

Test:U:120.0V I:0.1211A P:14.25W PF:0.9806 Lamp Flux:1111.49x1 lm		
NAME: ASD-MPR-7D15CC-EM-WH_5000K	TYPE:N/A	WEIGHT:N/A
SPEC.:N/A	DIM.: N/A	SERIAL No.:N/A
MFR.: ASD Lighting Corp	SUR.:N/A	Shielding Angle:N/A

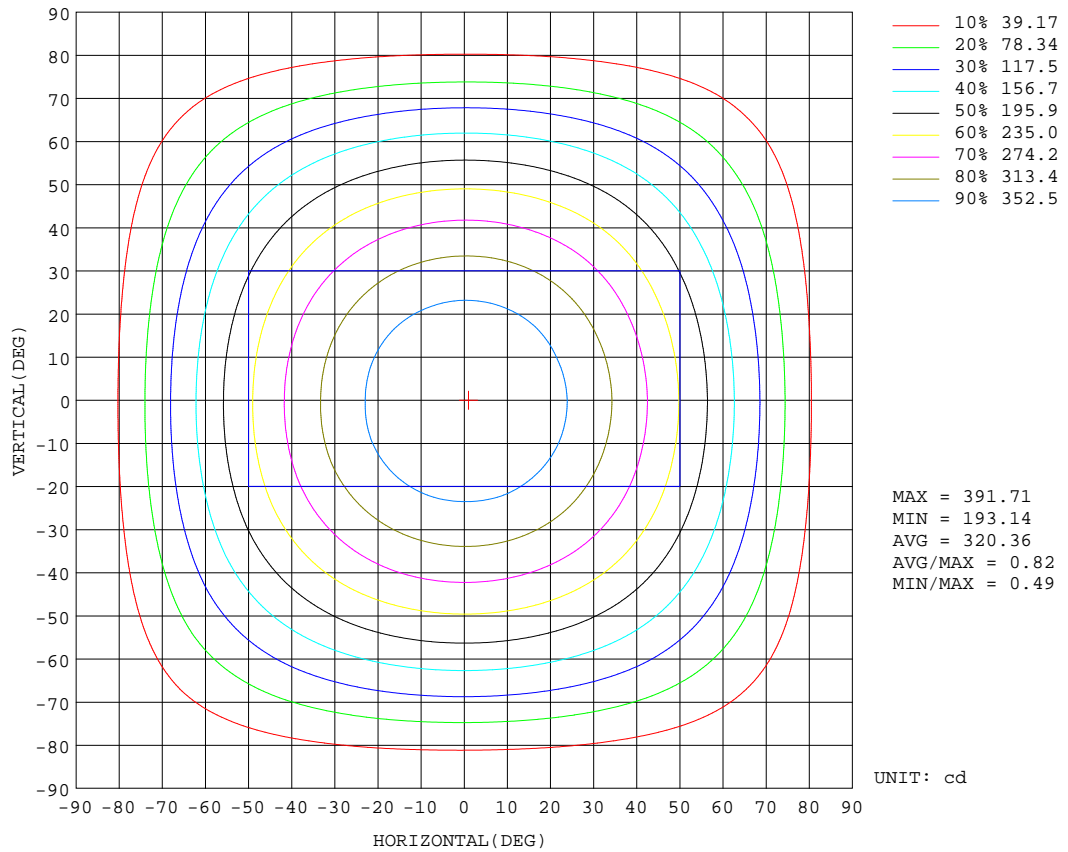
REFLECTANCE										
Ceiling	0.8	0.8	0.8	0.7	0.7	0.7	0.5	0.5	0.5	0
Walls	0.7	0.5	0.3	0.7	0.5	0.3	0.7	0.5	0.3	0
Working plane	0.2	0.2	0.2	0.2	0.2	0.2	0.2	0.2	0.2	0
ROOM INDEX	UTILIZATION FACTORS(PERCENT) k(RI) x RCR = 5									
k = 0.60	57	46	39	57	46	39	56	45	39	32
0.80	68	56	49	66	55	48	65	55	48	41
1.00	76	65	58	75	64	57	72	66	57	50
1.25	83	73	65	82	72	65	79	70	64	57
1.50	88	78	71	86	77	71	83	76	70	62
2.00	95	86	80	93	85	79	90	83	78	70
2.50	99	91	85	97	90	84	93	87	82	74
3.00	102	95	90	100	94	89	96	91	87	78
4.00	106	101	96	104	99	95	100	95	92	83
5.00	109	104	100	106	102	98	102	98	95	86
ROOM INDEX	UF(total)									Direct
According to DIN EN 13032-2 2004			Suspended				SHRNOM = 1.25			

C Range: 0 - 360DEG
 C Interval: 22.5DEG
 Test Speed: HIGH
 Temperature:25.4DEG
 Operators:Carl
 Test Date:2022-06-02

γ Range: 0 - 180DEG
 γ Interval: 1.0DEG
 Test System:EVERFINE GO-R5000_V2 SYSTEM V2.0.351
 Humidity:39%
 Test Distance:2.526m [K=1.0000]
 Remarks:

ISOCANDELA DIAGRAM

Test:U:120.0V I:0.1211A P:14.25W PF:0.9806 Lamp Flux:1111.49x1 lm		
NAME: ASD-MPR-7D15CC-EM-WH_5000K	TYPE:N/A	WEIGHT:N/A
SPEC.:N/A	DIM.: N/A	SERIAL No.:N/A
MFR.: ASD Lighting Corp	SUR.:N/A	Shielding Angle:N/A

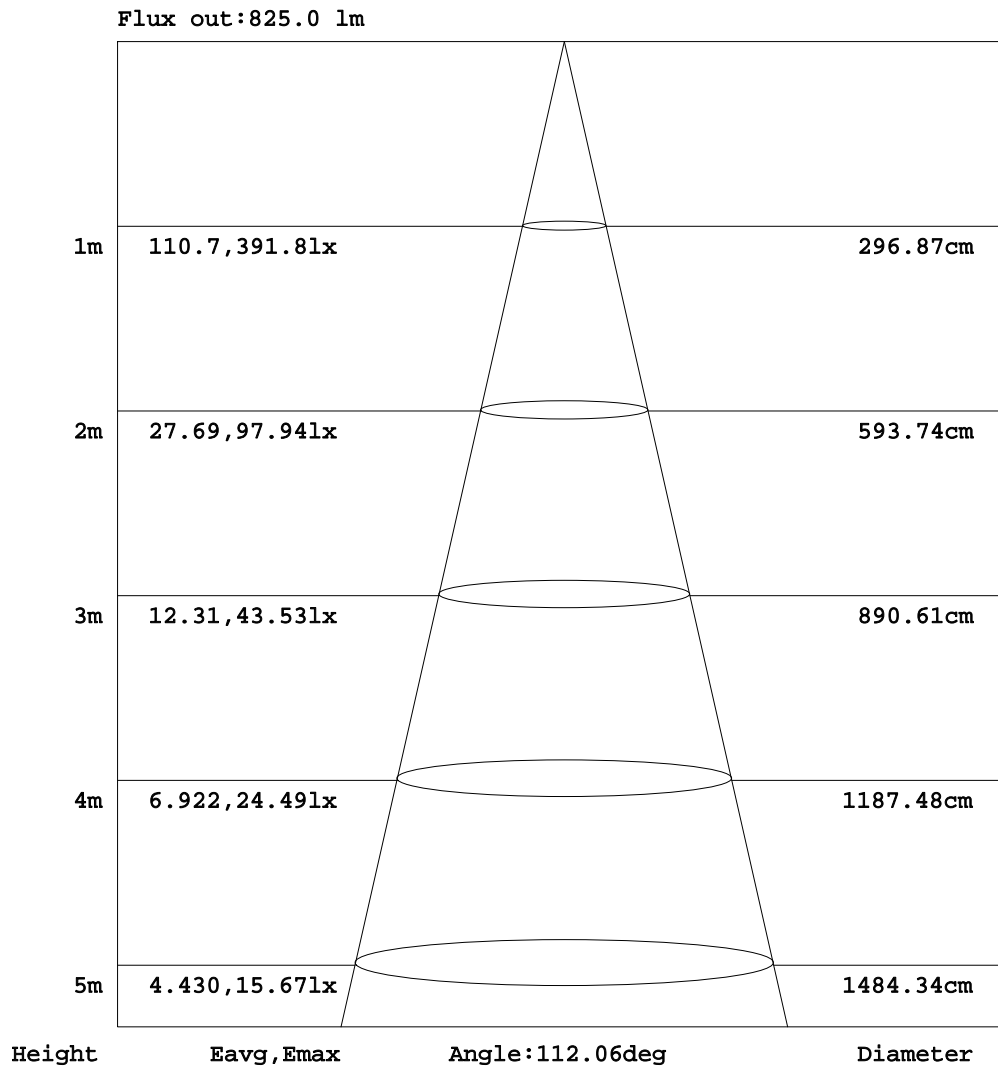


C Range: 0 - 360DEG
 C Interval: 22.5DEG
 Test Speed: HIGH
 Temperature:25.4DEG
 Operators:Carl
 Test Date:2022-06-02

γ Range: 0 - 180DEG
 γ Interval: 1.0DEG
 Test System:EVERFINE GO-R5000_V2 SYSTEM V2.0.351
 Humidity:39%
 Test Distance:2.526m [K=1.0000]
 Remarks:

AAI Figure

Test:U:120.0V I:0.1211A P:14.25W PF:0.9806 Lamp Flux:1111.49x1 lm		
NAME: ASD-MPR-7D15CC-EM-WH_5000K	TYPE:N/A	WEIGHT:N/A
SPEC.:N/A	DIM.: N/A	SERIAL No.:N/A
MFR.: ASD Lighting Corp	SUR.:N/A	Shielding Angle:N/A



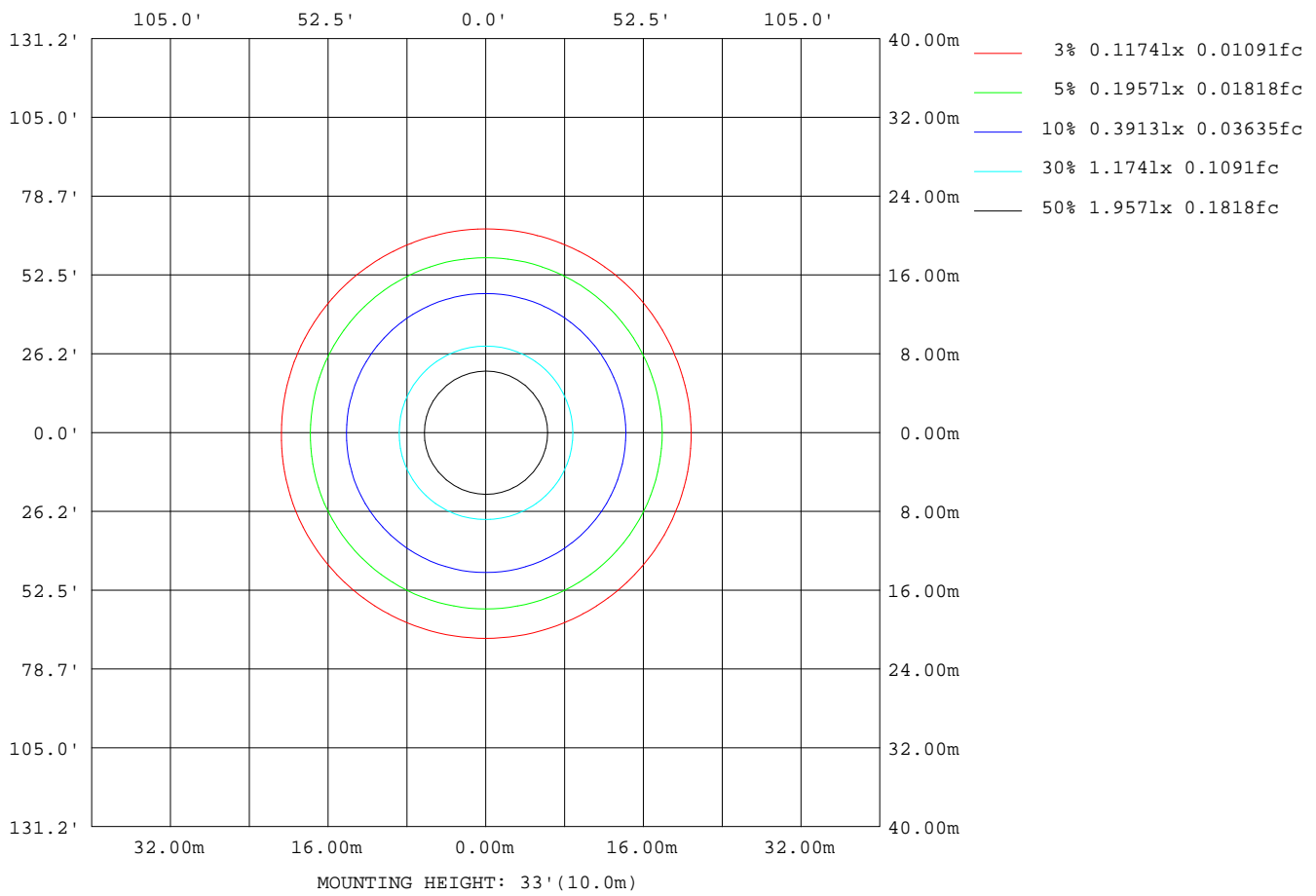
Note:The Curves indicate the illuminated area and the average illumination when the luminaire is at different distance.

C Range: 0 - 360DEG
 C Interval: 22.5DEG
 Test Speed: HIGH
 Temperature:25.4DEG
 Operators:Carl
 Test Date:2022-06-02

γ Range: 0 - 180DEG
 γ Interval: 1.0DEG
 Test System:EVERFINE GO-R5000_V2 SYSTEM V2.0.351
 Humidity:39%
 Test Distance:2.526m [K=1.0000]
 Remarks:

ISOLUX DIAGRAM

Test:U:120.0V I:0.1211A P:14.25W PF:0.9806 Lamp Flux:1111.49x1 lm		
NAME: ASD-MPR-7D15CC-EM-WH_5000K	TYPE:N/A	WEIGHT:N/A
SPEC.:N/A	DIM.: N/A	SERIAL No.:N/A
MFR.: ASD Lighting Corp	SUR.:N/A	Shielding Angle:N/A



C Range: 0 - 360DEG
 C Interval: 22.5DEG
 Test Speed: HIGH
 Temperature:25.4DEG
 Operators:Carl
 Test Date:2022-06-02

γ Range: 0 - 180DEG
 γ Interval: 1.0DEG
 Test System:EVERFINE GO-R5000_V2 SYSTEM V2.0.351
 Humidity:39%
 Test Distance:2.526m [K=1.0000]
 Remarks:

LED Avg.L Report

Test:U:120.0V I:0.1211A P:14.25W PF:0.9806 Lamp Flux:1111.49x1 lm		
NAME: ASD-MPR-7D15CC-EM-WH_5000K	TYPE:N/A	WEIGHT:N/A
SPEC.:N/A	DIM.: N/A	SERIAL No.:N/A
MFR.: ASD Lighting Corp	SUR.:N/A	Shielding Angle:N/A

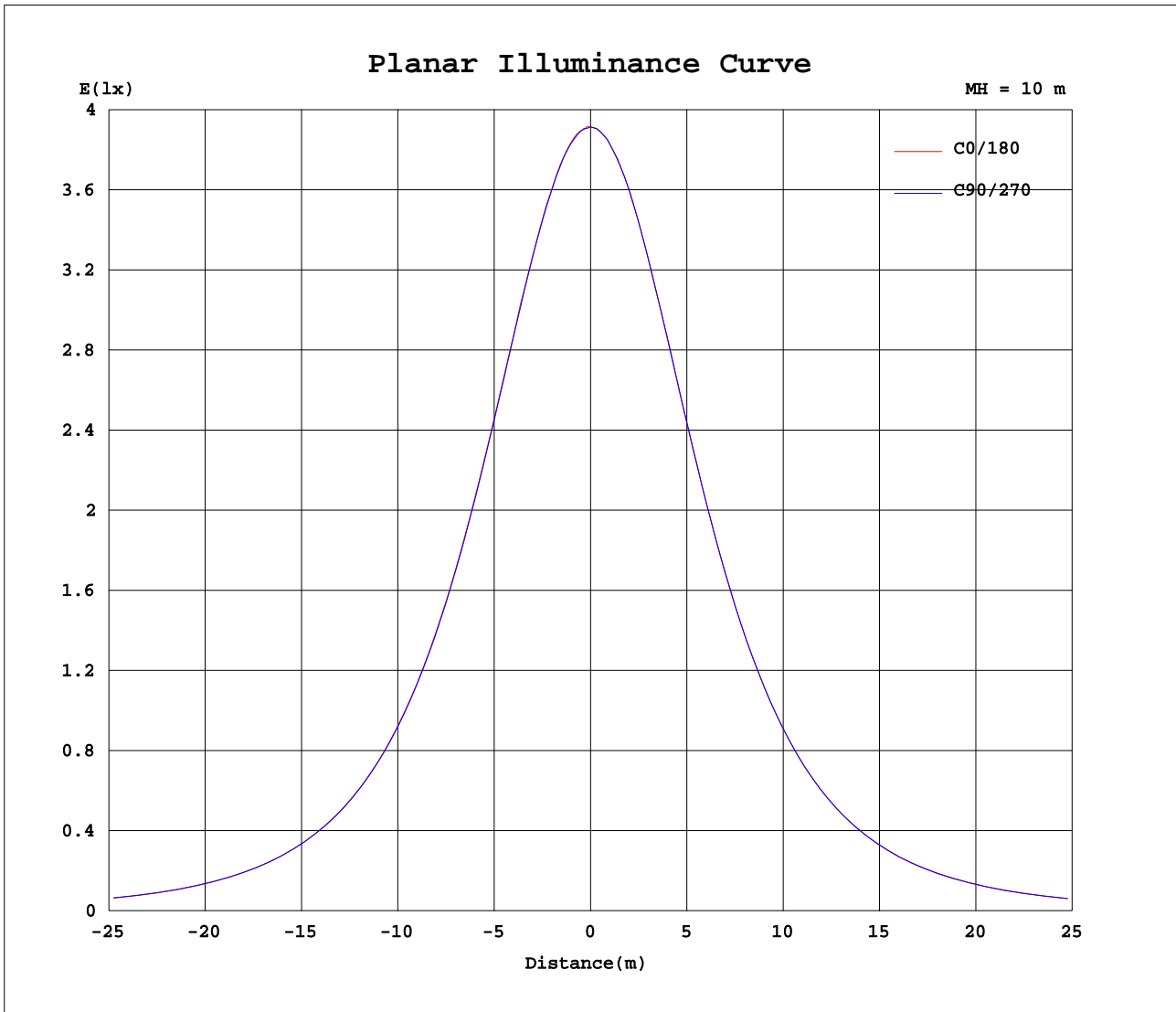
AvgL	cd/m2
L_0~180(65)av	18444
L_0~180(75)av	15793
L_0~180(85)av	9001
L_90~270(65)av	18382
L_90~270(75)av	15904
L_90~270(85)av	11112
L_45(65)av	18454
L_45(75)av	15915
L_45(85)av	10138

Standard: GB/T 29293-2012

C Range: 0 - 360DEG
 C Interval: 22.5DEG
 Test Speed: HIGH
 Temperature:25.4DEG
 Operators:Carl
 Test Date:2022-06-02

γ Range: 0 - 180DEG
 γ Interval: 1.0DEG
 Test System:EVERFINE GO-R5000_V2 SYSTEM V2.0.351
 Humidity:39%
 Test Distance:2.526m [K=1.0000]
 Remarks:

Planar Illuminance Curve



C Range: 0 - 360DEG
 C Interval: 22.5DEG
 Test Speed: HIGH
 Temperature: 25.4DEG
 Operators: Carl
 Test Date: 2022-06-02

γ Range: 0 - 180DEG
 γ Interval: 1.0DEG
 Test System: EVERFINE GO-R5000_V2 SYSTEM V2.0.351
 Humidity: 39%
 Test Distance: 2.526m [K=1.0000]
 Remarks:

LUMINOUS DISTRIBUTION INTENSITY DATA

Test:U:120.0V I:0.1211A P:14.25W PF:0.9806 Lamp Flux:1111.49x1 lm		
NAME: ASD-MPR-7D15CC-EM-WH_5000K	TYPE:N/A	WEIGHT:N/A
SPEC.:N/A	DIM.: N/A	SERIAL No.:N/A
MFR.: ASD Lighting Corp	SUR.:N/A	Shielding Angle:N/A

Table--1

UNIT: cd

C(DEG) γ (DEG)	0	22.5	45	67.5	90	112.5	135	157.5	180	202.5	225	247.5	270	292.5	315	337.5			
0	391	391	391	391	391	391	391	391	391	391	391	391	391	391	391	391			
5	390	390	390	390	389	390	390	389	390	389	389	389	389	390	390	389			
10	385	385	385	384	384	384	384	384	384	384	384	383	384	384	384	384			
15	376	376	376	375	375	375	375	375	374	374	374	374	375	375	375	375			
20	365	364	364	363	363	363	363	363	362	361	361	361	362	362	363	363			
25	349	349	349	348	347	348	347	347	346	346	345	346	346	347	348	348			
30	331	331	330	330	330	329	329	329	327	327	327	327	328	328	329	329			
35	310	310	309	309	309	308	308	308	306	306	305	306	306	308	308	308			
40	287	287	286	286	285	285	285	285	283	283	282	282	283	284	284	285			
45	261	261	261	260	260	260	260	259	257	257	256	256	257	258	259	259			
50	234	234	233	233	233	233	233	232	230	229	229	229	229	230	231	231			
55	204	205	204	204	204	204	204	204	201	200	199	199	200	200	201	202			
60	174	174	174	174	174	174	173	173	170	170	169	169	169	170	170	171			
65	141	142	142	142	142	142	142	142	138	137	137	135	136	137	138	138			
70	108	108	109	109	109	110	110	109	105	104	104	103	103	104	104	104			
75	74.2	74.9	75.8	76.5	76.7	77.2	76.8	75.8	72.1	71.4	71.0	70.7	70.6	71.2	71.3	71.2			
80	42.1	42.9	44.2	45.4	45.7	46.2	45.3	44.1	40.9	40.3	40.2	40.5	40.5	40.8	40.3	40.0			
85	14.3	15.3	17.0	18.8	19.5	19.5	17.9	16.3	13.8	13.5	14.2	15.1	15.2	15.0	14.1	12.9			
90	0.08	0.07	0.11	0.12	0.11	0.12	0.14	0.15	0.02	0.02	0.02	0.02	0.02	0.02	0.02	0.02			
95	0.08	0.08	0.08	0.08	0.08	0.08	0.08	0.08	0.03	0.03	0.03	0.03	0.03	0.03	0.03	0.03			
100	0.10	0.09	0.11	0.11	0.10	0.11	0.11	0.09	0.04	0.04	0.05	0.05	0.04	0.05	0.05	0.04			
105	0.11	0.11	0.11	0.11	0.11	0.12	0.12	0.11	0.05	0.06	0.06	0.06	0.06	0.06	0.06	0.06			
110	0.12	0.11	0.12	0.12	0.12	0.13	0.13	0.12	0.07	0.07	0.08	0.08	0.07	0.08	0.07	0.07			
115	0.13	0.13	0.13	0.13	0.13	0.14	0.14	0.13	0.09	0.09	0.09	0.09	0.09	0.09	0.09	0.08			
120	0.15	0.15	0.15	0.16	0.16	0.16	0.16	0.15	0.11	0.10	0.11	0.11	0.10	0.10	0.11	0.10			
125	0.18	0.18	0.18	0.18	0.19	0.19	0.19	0.18	0.13	0.13	0.13	0.13	0.12	0.13	0.13	0.12			
130	0.23	0.23	0.22	0.23	0.23	0.24	0.23	0.23	0.15	0.15	0.15	0.15	0.15	0.15	0.15	0.15			
135	0.28	0.28	0.28	0.29	0.29	0.30	0.29	0.28	0.18	0.18	0.17	0.18	0.17	0.17	0.17	0.18			
140	0.35	0.36	0.38	0.37	0.38	0.39	0.37	0.35	0.20	0.19	0.20	0.20	0.20	0.20	0.20	0.19			
145	0.44	0.46	0.48	0.49	0.49	0.49	0.47	0.44	0.22	0.21	0.23	0.24	0.23	0.23	0.22	0.23			
150	0.51	0.54	0.56	0.57	0.57	0.57	0.55	0.53	0.24	0.23	0.25	0.25	0.25	0.25	0.25	0.25			
155	0.59	0.62	0.63	0.64	0.65	0.64	0.63	0.61	0.28	0.27	0.28	0.28	0.28	0.29	0.28	0.30			
160	0.65	0.66	0.67	0.69	0.68	0.69	0.68	0.66	0.32	0.32	0.31	0.31	0.32	0.32	0.30	0.33			
165	0.66	0.65	0.66	0.67	0.68	0.68	0.68	0.66	0.35	0.35	0.33	0.34	0.33	0.33	0.33	0.36			
170	0.62	0.62	0.62	0.62	0.62	0.63	0.63	0.63	0.39	0.39	0.36	0.36	0.37	0.36	0.37	0.39			
175	0.60	0.59	0.58	0.57	0.56	0.57	0.59	0.60	0.45	0.45	0.44	0.43	0.42	0.41	0.43	0.46			
180	0.52	0.51	0.49	0.48	0.48	0.50	0.52	0.53	0.52	0.52	0.51	0.49	0.48	0.49	0.50	0.52			

C Range: 0 - 360DEG
 C Interval: 22.5DEG
 Test Speed: HIGH
 Temperature:25.4DEG
 Operators:Carl
 Test Date:2022-06-02

γ Range: 0 - 180DEG
 γ Interval: 1.0DEG
 Test System:EVERFINE GO-R5000_V2 SYSTEM V2.0.351
 Humidity:39%
 Test Distance:2.526m [K=1.0000]
 Remarks: