

# ASD<sup>®</sup> LED SLIM FLOODLIGHT

► **DESIGN** - LED SLIM FLOODLIGHT is highly efficient along with die-cast aluminum housing designed to maximize heat dissipation to ensure longevity. It is designed to operate on 120V circuits.

► Tempered glass lens protects the LED chips and provides high illuminance.

► **INSTALLATION** - With a sturdy aluminum arm bracket the fixture can be mounted directly to electrical boxes or to poles with ½" threaded inserts. A widened and thickened adjustable yoke bracket makes the light more stable. You can easily install it on ceilings, walls or other surface by adjusting the bracket to different angles.

► **APPLICATION** - Perfect commercial or industrial solution for both indoor and outdoor applications such as: gardens, squares, stadiums, streets, yards, exterior accent lighting, and more. It is also Wet Locations rated.

► **ADVANTAGES** - With calculated lifespan up to 97,000 hours, these fixtures are made to last decades under normal operation! ASD provides a 5-year limited warranty along with UL certification to guarantee top quality products and safety!

Catalog number	
Notes	
Type	



Finish:	White
	Bronze
	Black

Model	Watts	Voltage	Dimmable	Lumens	CCT	Finish	Dimensions (LxWxH)	Cord	Bracket
<b>FLSL-A ARM</b>									
ASD-FLSL-20N50A-WH	20W	120 V	-	2,040 lm	5,000 K	White	6-5/8" x 4-13/16" x 1-5/8"	2 ft	Arm
ASD-FLSL-20N50A-BZ	20W	120 V	-	2,040 lm	5,000 K	Bronze	6-5/8" x 4-13/16" x 1-5/8"	2 ft	Arm
ASD-FLSL-20N50A-BZ-2PACK	20W	120 V	-	2,040 lm	5,000 K	Bronze	6-5/8" x 4-13/16" x 1-5/8"	2 ft	Arm
ASD-FLSL-20N50A-BK	20W	120 V	-	2,040 lm	5,000 K	Black	6-5/8" x 4-13/16" x 1-5/8"	2 ft	Arm
ASD-FLSL-30N30A-WH	30W	120 V	-	3,056 lm	3,000 K	White	7-1/4" x 5-13/16" x 1-11/16"	2 ft	Arm
ASD-FLSL-30N30A-BZ	30W	120 V	-	3,056 lm	3,000 K	Bronze	7-1/4" x 5-13/16" x 1-11/16"	2 ft	Arm
ASD-FLSL-30N30A-BK	30W	120 V	-	3,056 lm	3,000 K	Black	7-1/4" x 5-13/16" x 1-11/16"	2 ft	Arm
ASD-FLSL-30N50A-WH	30W	120 V	-	3,056 lm	5,000 K	White	7-1/4" x 5-13/16" x 1-11/16"	2 ft	Arm
ASD-FLSL-30N50A-BZ	30W	120 V	-	3,056 lm	5,000 K	Bronze	7-1/4" x 5-13/16" x 1-11/16"	2 ft	Arm
ASD-FLSL-30N50A-BK	30W	120 V	-	3,056 lm	5,000 K	Black	7-1/4" x 5-13/16" x 1-11/16"	2 ft	Arm
ASD-FLSL-30N50A-BK-2PACK	30W	120 V	-	3,056 lm	5,000 K	Black	7-1/4" x 5-13/16" x 1-11/16"	2 ft	Arm
ASD-FLSL-50N30A-WH	50W	120 V	-	5,100 lm	3,000 K	White	9-1/16" x 8-1/16" x 1-3/4"	2 ft	Arm
ASD-FLSL-50N30A-BZ	50W	120 V	-	5,100 lm	3,000 K	Bronze	9-1/16" x 8-1/16" x 1-3/4"	2 ft	Arm
ASD-FLSL-50N30A-BK	50W	120 V	-	5,100 lm	3,000 K	Black	9-1/16" x 8-1/16" x 1-3/4"	2 ft	Arm
ASD-FLSL-50N50A-WH	50W	120 V	-	5,100 lm	5,000 K	White	9-1/16" x 8-1/16" x 1-3/4"	2 ft	Arm
ASD-FLSL-50N50A-BZ	50W	120 V	-	5,100 lm	5,000 K	Bronze	9-1/16" x 8-1/16" x 1-3/4"	2 ft	Arm
ASD-FLSL-50N50A-BZ-2PACK	50W	120 V	-	5,100 lm	5,000 K	Bronze	9-1/16" x 8-1/16" x 1-3/4"	2 ft	Arm
ASD-FLSL-50N50A-BK	50W	120 V	-	5,100 lm	5,000 K	Black	9-1/16" x 8-1/16" x 1-3/4"	2 ft	Arm
<b>FLSL-Y YOKE</b>									
ASD-FLSL-50N50Y-BZ	50W	120 V	-	5,100 lm	5,000 K	Bronze	8-1/4" x 6-13/16" x 1-5/16"	2.4 ft	Yoke
ASD-FLSL-50N50Y-BK	50W	120 V	-	5,100 lm	5,000 K	Black	8-1/4" x 6-13/16" x 1-5/16"	2.4 ft	Yoke
ASD-FLSL-100N50Y-BZ	100W	120 V	-	10,200 lm	5,000 K	Bronze	12-7/8" x 9-13/16" x 1-9/16"	2.4 ft	Yoke
ASD-FLSL-100N50Y-BK	100W	120 V	-	10,200 lm	5,000 K	Black	12-7/8" x 9-13/16" x 1-9/16"	2.4 ft	Yoke
ASD-FLSL-100N50Y-BK-2PACK	100W	120 V	-	10,200 lm	5,000 K	Black	12-7/8" x 9-13/16" x 1-9/16"	2.4 ft	Yoke
ASD-FLSL-150N50Y-BZ	150W	120 V	-	15,868 lm	5,000 K	Bronze	14-15/16" x 11-5/8" x 1-9/16"	2.4 ft	Yoke
ASD-FLSL-150N50Y-BK	150W	120 V	-	15,868 lm	5,000 K	Black	14-15/16" x 11-5/8" x 1-9/16"	2.4 ft	Yoke
ASD-FLSL-200N50Y-BZ	200W	120 V	-	21,404 lm	5,000 K	Bronze	16-7/16" x 13-1/8" x 1-5/8"	2.4 ft	Yoke
ASD-FLSL-200N50Y-BK	200W	120 V	-	21,404 lm	5,000 K	Black	16-7/16" x 13-1/8" x 1-5/8"	2.4 ft	Yoke

For most up-to-date spec sheets please refer to [asd-lighting.com](http://asd-lighting.com)



# LED SLIM FLOODLIGHT

## PRODUCT SPECIFICATIONS:

Construction & Materials						
Housing	Aluminum					
Lens	Tempered glass					
Finish	White, Bronze, Black					
Weight	ASD-FLSL-20N50A-WH	0.8 lbs (0.4 kg)	ASD-FLSL-30N50A-BK	1.1 lbs (0.5 kg)	ASD-FLSL-50N50Y-BZ	1.8 lbs (0.8 kg)
	ASD-FLSL-20N50A-BZ		ASD-FLSL-30N50A-BK-2PACK		ASD-FLSL-50N50Y-BK	
	ASD-FLSL-20N50A-BZ-2PACK	1.8 lbs (0.8 kg)	ASD-FLSL-50N30A-WH	1.9 lbs (0.9 kg)	ASD-FLSL-100N50Y-BZ	4 lbs (1.8 kg)
	ASD-FLSL-20N50A-BK	0.8 lbs (0.4 kg)	ASD-FLSL-50N30A-BZ		ASD-FLSL-100N50Y-BK	
	ASD-FLSL-30N30A-WH	1.1 lbs (0.5 kg)	ASD-FLSL-50N30A-BK	4.1 lbs (1.9 kg)	ASD-FLSL-100N50Y-BK-2PACK	4.3 lbs (2 kg)
	ASD-FLSL-30N30A-BZ		ASD-FLSL-50N50A-WH		ASD-FLSL-150N50Y-BZ	
	ASD-FLSL-30N30A-BK		ASD-FLSL-50N50A-BZ		ASD-FLSL-150N50Y-BK	
	ASD-FLSL-30N50A-WH		ASD-FLSL-50N50A-BZ-2PACK		ASD-FLSL-200N50Y-BZ	
ASD-FLSL-30N50A-BZ		ASD-FLSL-50N50A-BK	1.9 lbs (0.9 kg)	ASD-FLSL-200N50Y-BK	8 lbs (3.6 kg)	
Environmental system						
Work environment	Suitable for Wet Locations, IP65					
Operating temperature	-4°F to 104°F (-20°C to 40°C)					
L-70 Life	R > 36,000 hrs; C > 97,000 hrs					
Optical system						
Luminous flux	ASD-FLSL-20N50A-WH	2,040 lm	ASD-FLSL-30N50A-BK	3,056 lm	ASD-FLSL-50N50Y-BZ	5,100 lm
	ASD-FLSL-20N50A-BZ		ASD-FLSL-30N50A-BK-2PACK		ASD-FLSL-50N50Y-BK	
	ASD-FLSL-20N50A-BZ-2PACK		ASD-FLSL-50N30A-WH		ASD-FLSL-100N50Y-BZ	
	ASD-FLSL-20N50A-BK	3,056 lm	ASD-FLSL-50N30A-BZ	5,100 lm	ASD-FLSL-100N50Y-BK	10,200 lm
	ASD-FLSL-30N30A-WH		ASD-FLSL-50N30A-BK		ASD-FLSL-100N50Y-BK-2PACK	
	ASD-FLSL-30N30A-BZ		ASD-FLSL-50N50A-WH		ASD-FLSL-150N50Y-BZ	
	ASD-FLSL-30N30A-BK		ASD-FLSL-50N50A-BZ		ASD-FLSL-150N50Y-BK	
	ASD-FLSL-30N50A-WH		ASD-FLSL-50N50A-BZ-2PACK		ASD-FLSL-200N50Y-BZ	
ASD-FLSL-30N50A-BZ		ASD-FLSL-50N50A-BK		ASD-FLSL-200N50Y-BK	21,404 lm	
Color temperature	3,000K; 5,000 K					
CRI	> 70					
Electrical system						
Input voltage	120 V					
Max input current	ASD-FLSL-20N50A-WH	0.18 A	ASD-FLSL-30N50A-BK	0.27 A	ASD-FLSL-50N50Y-BZ	0.5 A
	ASD-FLSL-20N50A-BZ		ASD-FLSL-30N50A-BK-2PACK		ASD-FLSL-50N50Y-BK	
	ASD-FLSL-20N50A-BZ-2PACK		ASD-FLSL-50N30A-WH		ASD-FLSL-100N50Y-BZ	
	ASD-FLSL-20N50A-BK	0.27 A	ASD-FLSL-50N30A-BZ	0.27 A	ASD-FLSL-100N50Y-BK	0.9 A
	ASD-FLSL-30N30A-WH		ASD-FLSL-50N30A-BK		ASD-FLSL-100N50Y-BK-2PACK	
	ASD-FLSL-30N30A-BZ		ASD-FLSL-50N50A-WH		ASD-FLSL-150N50Y-BZ	
	ASD-FLSL-30N30A-BK		ASD-FLSL-50N50A-BZ		ASD-FLSL-150N50Y-BK	
	ASD-FLSL-30N50A-WH		ASD-FLSL-50N50A-BZ-2PACK		ASD-FLSL-200N50Y-BZ	
ASD-FLSL-30N50A-BZ		ASD-FLSL-50N50A-BK		ASD-FLSL-200N50Y-BK	1.82 A	
Off state power	0W					
Power consumption	ASD-FLSL-20N50A-WH	20W	ASD-FLSL-30N50A-BK	30W	ASD-FLSL-50N50Y-BZ	50W
	ASD-FLSL-20N50A-BZ		ASD-FLSL-30N50A-BK-2PACK		ASD-FLSL-50N50Y-BK	
	ASD-FLSL-20N50A-BZ-2PACK		ASD-FLSL-50N30A-WH		ASD-FLSL-100N50Y-BZ	
	ASD-FLSL-20N50A-BK	30W	ASD-FLSL-50N30A-BZ	50W	ASD-FLSL-100N50Y-BK	100W
	ASD-FLSL-30N30A-WH		ASD-FLSL-50N30A-BK		ASD-FLSL-100N50Y-BK-2PACK	
	ASD-FLSL-30N30A-BZ		ASD-FLSL-50N50A-WH		ASD-FLSL-150N50Y-BZ	
	ASD-FLSL-30N30A-BK		ASD-FLSL-50N50A-BZ		ASD-FLSL-150N50Y-BK	
	ASD-FLSL-30N50A-WH		ASD-FLSL-50N50A-BZ-2PACK		ASD-FLSL-200N50Y-BZ	
ASD-FLSL-30N50A-BZ		ASD-FLSL-50N50A-BK		ASD-FLSL-200N50Y-BK	200W	
Power factor	> 0.9					
Output voltage	270 V					
Max output current	ASD-FLSL-20N50A-WH	0.072 A	ASD-FLSL-30N50A-BK	0.1 A	ASD-FLSL-50N50Y-BZ	0.167 A
	ASD-FLSL-20N50A-BZ		ASD-FLSL-30N50A-BK-2PACK		ASD-FLSL-50N50Y-BK	
	ASD-FLSL-20N50A-BZ-2PACK		ASD-FLSL-50N30A-WH		ASD-FLSL-100N50Y-BZ	
	ASD-FLSL-20N50A-BK	0.1 A	ASD-FLSL-50N30A-BZ	0.167 A	ASD-FLSL-100N50Y-BK	0.334 A
	ASD-FLSL-30N30A-WH		ASD-FLSL-50N30A-BK		ASD-FLSL-100N50Y-BK-2PACK	
	ASD-FLSL-30N30A-BZ		ASD-FLSL-50N50A-WH		ASD-FLSL-150N50Y-BZ	
	ASD-FLSL-30N30A-BK		ASD-FLSL-50N50A-BZ		ASD-FLSL-150N50Y-BK	
	ASD-FLSL-30N50A-WH		ASD-FLSL-50N50A-BZ-2PACK		ASD-FLSL-200N50Y-BZ	
ASD-FLSL-30N50A-BZ		ASD-FLSL-50N50A-BK		ASD-FLSL-200N50Y-BK	0.667 A	
Surge protection DM/CM	1 kV / 2 kV					
				for models 20W: 252 V		
				for models 20W: 0.5 kV / 1 kV		

For most up-to-date spec sheets please refer to [asd-lighting.com](http://asd-lighting.com)



# LED SLIM FLOODLIGHT

## Regular and voluntary certifications

5-year limited warranty  
 UL certified E473804

## PACKAGE CONTENTS:

Description	Q-ty
LED Slim Floodlight	1 (2 for 2 pack)
Wire nut (A)	3
Box	1



## INSTALLATION GUIDE

### IMPORTANT SAFETY INFORMATION:

Please read all the instructions below before installation.

- ▶ Make sure that the supply voltage corresponds to the rated product voltage.
- ▶ The product must be installed by a qualified electrician in accordance with the National Electrical Code and corresponding local codes.
- ▶ If the product is damaged, do not use it.

### ⚠ WARNING

**RISK OF PERSONAL INJURY – READ and follow all WARNINGS and installation instructions.** Keep or give to the owner for future reference.

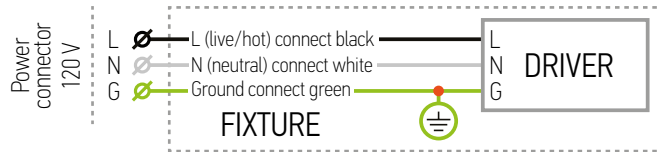
**Risk of cuts:** Wear gloves to prevent cuts or abrasions when removing from carton, handling, installing, and maintaining this product.

**Risk of electric shock:** This product must be installed in accordance with the applicable installation code by a person familiar with the construction and operation of the product and the hazards involved.

**Risk of Fire:** Minimum 194°F supply conductors. Consult a qualified electrician to ensure correct branch circuit conductor.

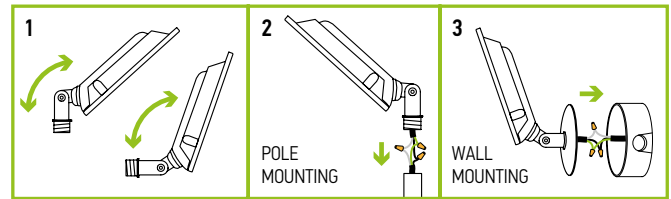
ASD® assumes no responsibility for claims arising out of improper or careless installation or handling of this product.

### ELECTRICAL SCHEMATIC DIAGRAM:



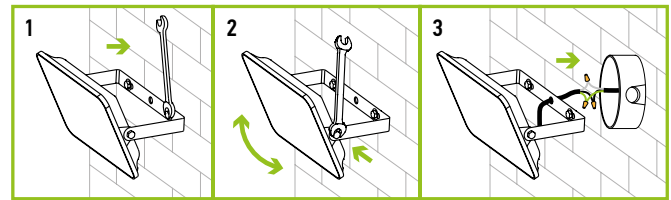
### MODELS WITH ARM INSTALLATION STEPS:

1. Turn off the main power and then adjust the arm. The arm allows you to choose the necessary light direction and set the desired angle for the lighting fixture.
2. **Pole installation:** The floodlight can be mounted directly to a pole with a 1/2" threaded insert. Connect the wires: Black to Black, White to White, Green to Green. Secure the connection with Wire Nuts.
3. **J-box installation:** The floodlight can be mounted directly to an electrical box (cover plate is not included). Connect the wires: Black to Black, White to White, Green to Green. Secure the connection with Wire Nuts.



### MODELS ON YOKE INSTALLATION STEPS:

1. Install the bracket to your mounting surface.
2. Adjust fixture to desired angle by loosening and tightening bolts on both sides of the bracket.
3. Connect the wires: Black to Black, White to White, Green to Green. Secure the connection with Wire Nuts.



For most up-to-date spec sheets please refer to [asd-lighting.com](http://asd-lighting.com)



# LED SLIM FLOODLIGHT

## ORDERING INFORMATION

Model	UPC	Pcs. per carton	Carton size	Carton weight	GTIN 14
<b>FSL-A ARM</b>					
ASD-FLSL-20N50A-WH	819201027163	10	10.1" x 9.3" x 7.3"	10.6 lbs	30819201027164
ASD-FLSL-20N50A-BZ	810050731911	10	10.1" x 9.3" x 7.3"	10.6 lbs	30810050731912
ASD-FLSL-20N50A-BZ-2PACK	810128112062	5	18.5" x 6.9" x 5.5"	10.4 lbs	10810128112069
ASD-FLSL-20N50A-BK	819201027125	10	10.1" x 9.3" x 7.3"	10.6 lbs	30819201027126
ASD-FLSL-30N30A-WH	819201027194	10	12" x 9.4" x 7.9"	14 lbs	30819201027195
ASD-FLSL-30N30A-BZ	810050731928	10	12" x 9.4" x 7.9"	14 lbs	40810050731926
ASD-FLSL-30N30A-BK	819201027187	10	12" x 9.4" x 7.9"	14 lbs	40819201027185
ASD-FLSL-30N50A-WH	819201027200	10	12" x 9.4" x 7.9"	14 lbs	30819201027201
ASD-FLSL-30N50A-BZ	810050731935	10	12" x 9.4" x 7.9"	14 lbs	30810050731936
ASD-FLSL-30N50A-BK	819201027170	10	12" x 9.4" x 7.9"	14 lbs	30819201027171
ASD-FLSL-30N50A-BK-2PACK	810128112079	5	18.9" x 7.5" x 6.5"	13.8 lbs	10810128112076
ASD-FLSL-50N30A-WH	819201027224	10	18.5" x 10.2" x 8.7"	23.2 lbs	30819201027225
ASD-FLSL-50N30A-BZ	810050731942	10	18.5" x 10.2" x 8.7"	23.2 lbs	30810050731943
ASD-FLSL-50N30A-BK	819201027217	10	18.5" x 10.2" x 8.7"	23.2 lbs	30819201027218
ASD-FLSL-50N50A-WH	819201027248	10	18.5" x 10.2" x 8.7"	23.2 lbs	30819201027249
ASD-FLSL-50N50A-BZ	810050731959	10	18.5" x 10.2" x 8.7"	23.2 lbs	30810050731950
ASD-FLSL-50N50A-BZ-2PACK	810128112086	5	19.9" x 9.3" x 8.7"	23.1 lbs	10810128112083
ASD-FLSL-50N50A-BK	819201027231	10	18.5" x 10.2" x 8.7"	23.2 lbs	30819201027232
<b>FSL-Y YOKE</b>					
ASD-FLSL-50N50Y-BZ	810050731966	10	15.4" x 8.7" x 7.5"	21.7 lbs	30810050731967
ASD-FLSL-50N50Y-BK	819201027255	10	15.4" x 8.7" x 7.5"	7.7 lbs	40819201027253
ASD-FLSL-100N50Y-BZ	810050731973	4	13.2" x 10.3" x 7.3"	18.8 lbs	30810050731974
ASD-FLSL-100N50Y-BK	819201027279	4	13.2" x 10.3" x 7.3"	20.7 lbs	40819201027277
ASD-FLSL-100N50Y-BK-2PACK	810128112093	2	13.2" x 10.2" x 7.5"	10.3 lbs	10810128112090
ASD-FLSL-150N50Y-BZ	810050731980	4	15.2" x 12.1" x 7.3"	27.2 lbs	40810050731988
ASD-FLSL-150N50Y-BK	819201027293	4	15.2" x 12.1" x 7.3"	27.2 lbs	30819201027294
ASD-FLSL-200N50Y-BZ	810050731997	4	16.7" x 13.7" x 7.5"	34.6 lbs	30810050731998
ASD-FLSL-200N50Y-BK	819201027309	4	16.7" x 13.7" x 7.5"	34.6 lbs	30819201027300

For most up-to-date spec sheets please refer to [asd-lighting.com](http://asd-lighting.com)

**ASD LIGHTING CORP**

E-mail: [orders@asd-lighting.com](mailto:orders@asd-lighting.com) | Web site: [www.asd-lighting.com](http://www.asd-lighting.com)

