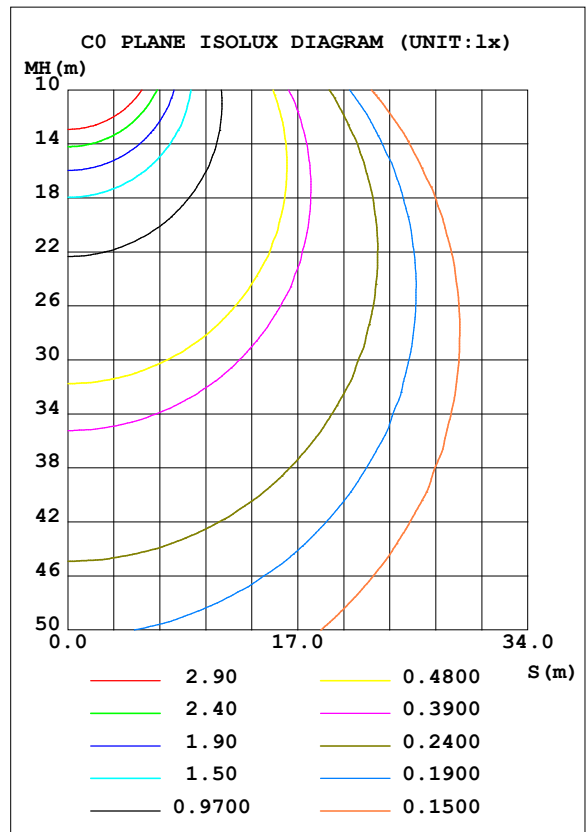
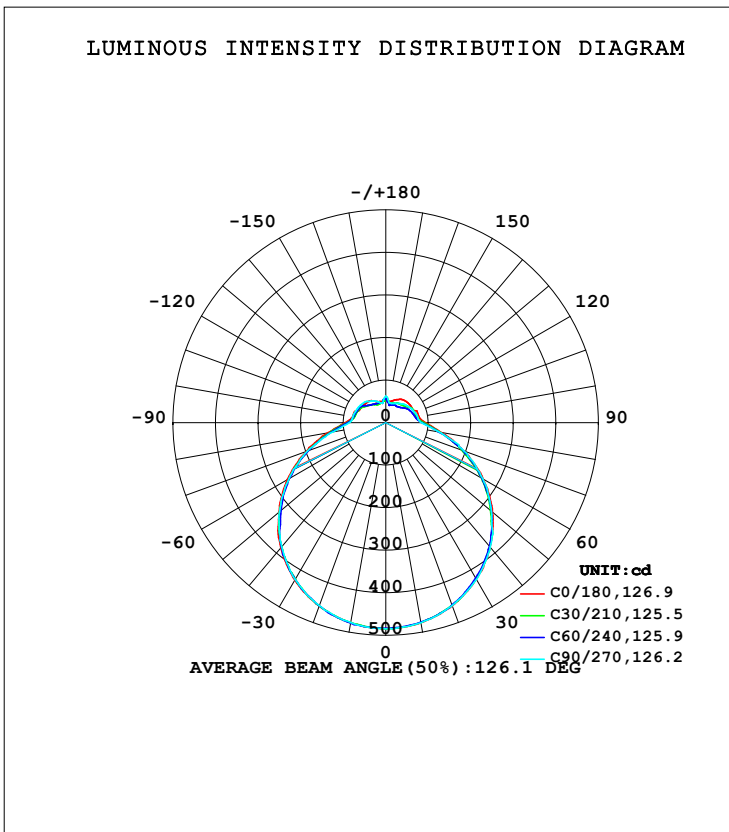


**LUMINAIRE PHOTOMETRIC TEST REPORT**

Test:U:120.08V I:0.2614A P:28.783W PF:0.9158 Freq:60.00Hz Lamp Flux:2126.46x1 lm		
NAME: ASD lighting Corp	TYPE:	WEIGHT:
SPEC.:ASD-LFC-SN-16D28-AC-4000K	DIM.:	SERIAL No.:
MFR.: ASD lighting Corp	SUR.:0.43*0.39	Shielding Angle:

DATA OF LAMP		PHOTOMETRIC DATA			
MODEL	ASD-LFC-SN-16D28-AC	Imax (cd)	484.6	S/MH (C0/180)	1.31
NOMINAL POWER (W)	--	LOR (%)	100.0	S/MH (C90/270)	1.31
RATED VOLTAGE (V)	--	TOTAL FLUX (lm)	2126.5	<input type="checkbox"/> UP, DN (C0-180)	10.0,39.9
NOMINAL FLUX (lm)	2126.46	CIE CLASS	SEMI-D.	<input type="checkbox"/> UP, DN (C180-360)	10.2,39.9
LAMPS INSIDE	1	<input type="checkbox"/> up (%)	20.3	CIBSE SHR NOM	1.50
TEST VOLTAGE (V)	--	<input type="checkbox"/> down (%)	79.7	CIBSE SHR MAX	1.50



C Range: 0 - 360DEG  
 C Interval: 30.0DEG  
 Test Speed: HIGH  
 Temperature:25.3DEG  
 Operators:admin  
 Test Date:2022-03-16

Range: 0 - 180DEG  
 Interval: 1.0DEG  
 Test System:EVERFINE GO-2000B\_V1 SYSTEM V2.00.411  
 Humidity:65.0%  
 Test Distance:8.780m [K=1.0000]  
 Remarks:

ZONAL FLUX DIAGRAM

ZONAL FLUX DIAGRAM:

mm	C0	C45	C90	C135	C180	C225	C270	C315	mm	□ zone	□ total	%lum, lamp
10	477.2	476.5	477.9	476.5	477.5	477.5	477.1	477.5	0- 10	45.87	45.87	2.16,2.16
20	458.0	456.2	457.3	458.2	458.9	458.1	457.6	458.5	10- 20	132.5	178.4	8.39,8.39
30	424.8	423.5	425.9	427.2	427.4	425.5	425.6	426.1	20- 30	204.5	382.9	18,18
40	381.3	379.7	382.0	385.7	384.6	381.5	380.9	382.5	30- 40	253.9	636.8	29.9,29.9
50	327.3	323.0	324.4	332.8	328.0	324.0	326.1	327.2	40- 50	274.6	911.4	42.9,42.9
60	264.2	260.4	263.4	270.2	267.7	261.7	262.7	266.2	50- 60	265.1	1176	55.3,55.3
70	195.1	192.1	196.6	202.5	199.0	194.9	196.8	200.3	60- 70	228.7	1405	66.1,66.1
80	132.0	127.2	127.6	133.4	138.1	131.7	126.6	133.0	70- 80	172.8	1578	74.2,74.2
90	93.45	87.83	84.49	93.88	95.69	90.80	86.06	90.33	80- 90	117.8	1696	79.7,79.7
100	79.63	72.96	76.46	82.84	79.89	76.31	79.00	80.94	90-100	90.40	1786	84,84
110	78.62	69.54	72.56	79.54	78.03	73.30	76.57	78.36	100-110	81.43	1868	87.8,87.8
120	71.00	66.02	68.33	74.92	68.57	69.89	74.03	74.43	110-120	72.64	1940	91.2,91.2
130	70.50	57.13	63.69	63.97	66.72	61.77	70.87	63.50	120-130	60.66	2001	94.1,94.1
140	68.48	52.15	57.96	55.39	64.89	55.19	65.73	57.72	130-140	47.20	2048	96.3,96.3
150	63.55	49.98	52.23	50.24	59.50	50.43	59.00	56.00	140-150	35.19	2083	98,98
160	56.33	47.32	48.28	49.75	52.73	48.01	52.26	54.79	150-160	24.24	2108	99.1,99.1
170	50.69	44.28	47.73	49.22	51.02	47.35	46.69	48.84	160-170	14.02	2122	99.8,99.8
180	58.84	55.57	62.80	54.84	58.83	55.55	62.72	54.84	170-180	4.935	2126	100,100
DEG	LUMINOUS INTENSITY:cd									UNIT:lm		

Conical surface Flux(90deg): 773.59 lm

%lum = 36.4%

%lamp = 36.4%

Conical surface Flux(120deg): 1176.5 lm

%lum = 55.3%

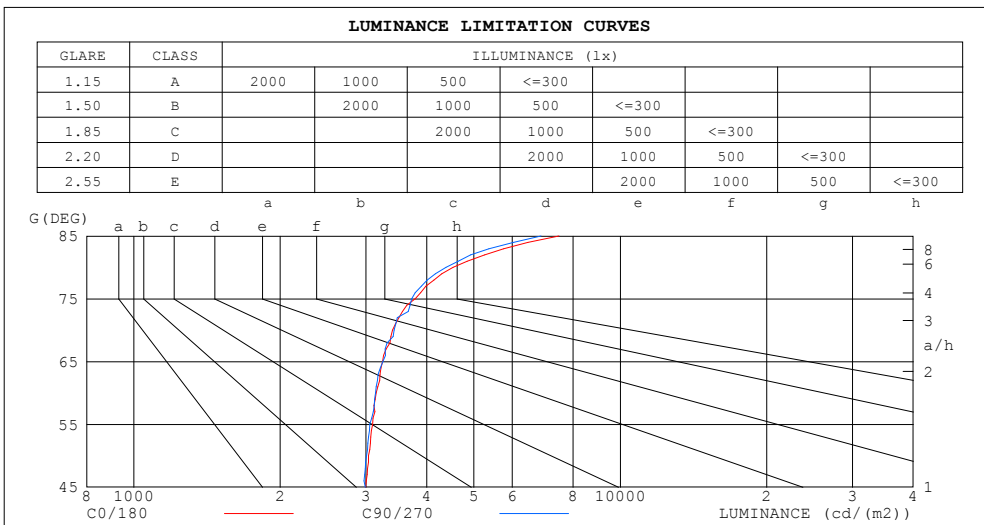
%lamp = 55.3%

C Range: 0 - 360DEG  
 C Interval: 30.0DEG  
 Test Speed: HIGH  
 Temperature:25.3DEG  
 Operators:admin  
 Test Date:2022-03-16

□ Range: 0 - 180DEG  
 □ Interval: 1.0DEG  
 Test System:EVERFINE GO-2000B\_V1 SYSTEM V2.00.411  
 Humidity:65.0%  
 Test Distance:8.780m [K=1.0000]  
 Remarks:

**LUMINANCE LIMITATION CURVES**

Test:U:120.08V I:0.2614A P:28.783W PF:0.9158 Freq:60.00Hz Lamp Flux:2126.46x1 lm		
NAME: ASD lighting Corp	TYPE:	WEIGHT:
SPEC.:ASD-LFC-SN-16D28-AC-4000K	DIM.:	SERIAL No.:
MFR.: ASD lighting Corp	SUR.:0.43*0.39	Shielding Angle:



LUMINANCE cd/(m2)		
G (DEG)	C0/180	C90/270
85	7477	6868
80	4533	4383
75	3790	3724
70	3401	3428
65	3247	3253
60	3151	3142
55	3098	3057
50	3036	3010
45	2998	2990

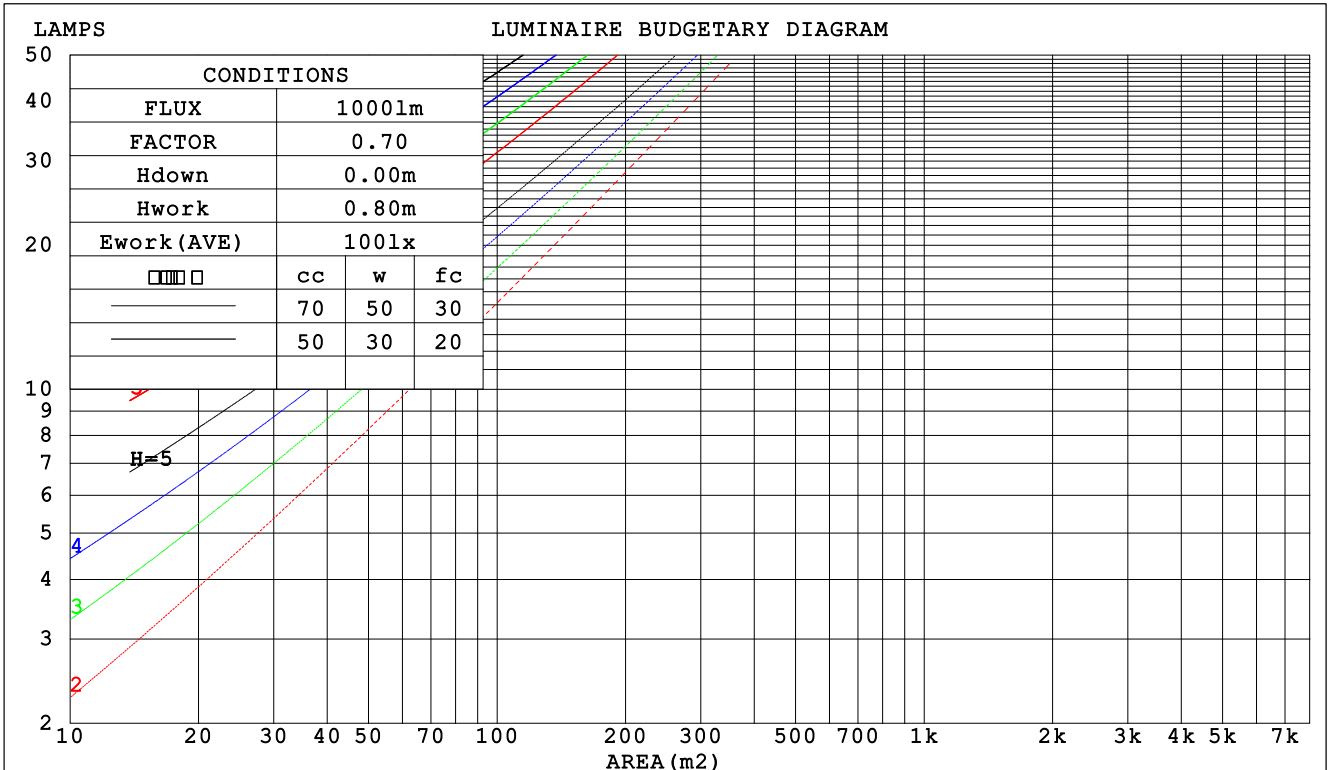
C Range: 0 - 360DEG  
 C Interval: 30.0DEG  
 Test Speed: HIGH  
 Temperature:25.3DEG  
 Operators:admin  
 Test Date:2022-03-16

Range: 0 - 180DEG  
 Interval: 1.0DEG  
 Test System:EVERFINE GO-2000B\_V1 SYSTEM V2.00.411  
 Humidity:65.0%  
 Test Distance:8.780m [K=1.0000]  
 Remarks:

CU AND LUMINAIRE BUDGETARY ESTIMATE DIAGRAM

Test:U:120.08V I:0.2614A P:28.783W PF:0.9158 Freq:60.00Hz Lamp Flux:2126.46x1 lm		
NAME: ASD lighting Corp	TYPE:	WEIGHT:
SPEC.:ASD-LFC-SN-16D28-AC-4000K	DIM.:	SERIAL No.:
MFR.: ASD lighting Corp	SUR.:0.43*0.39	Shielding Angle:

□cc	80%			70%			50%			30%			10%			0
□w	50%	30%	10%	50%	30%	10%	50%	30%	10%	50%	30%	10%	50%	30%	10%	0
□fc	20%			20%			20%			20%			20%			0
RCR	RCR:Room Cavity Ratio						Coefficients of Utilization(CU)									
0.0	1.14	1.14	1.14	1.09	1.09	1.09	.00	.00	.00	.91	.91	.91	.83	.83	.83	.80
1.0	.97	.92	.87	.92	.88	.84	.84	.81	.77	.77	.74	.71	.70	.68	.66	.62
2.0	.83	.76	.69	.79	.73	.67	.72	.67	.62	.66	.62	.58	.60	.57	.54	.50
3.0	.72	.64	.57	.69	.61	.55	.63	.57	.51	.58	.52	.48	.53	.48	.45	.41
4.0	.64	.54	.47	.61	.52	.46	.56	.49	.43	.51	.45	.40	.47	.42	.38	.35
5.0	.56	.47	.40	.54	.46	.39	.50	.42	.37	.46	.39	.35	.42	.37	.33	.30
6.0	.51	.41	.35	.49	.40	.34	.45	.37	.32	.41	.35	.30	.38	.32	.28	.26
7.0	.46	.37	.31	.44	.36	.30	.40	.33	.28	.37	.31	.27	.34	.29	.25	.23
8.0	.41	.33	.27	.40	.32	.26	.37	.30	.25	.34	.28	.24	.31	.26	.22	.20
9.0	.38	.30	.24	.37	.29	.23	.34	.27	.22	.31	.25	.21	.29	.24	.20	.18
10.0	.35	.27	.22	.34	.26	.21	.31	.25	.20	.29	.23	.19	.27	.22	.18	.16



C Range: 0 - 360DEG  
 C Interval: 30.0DEG  
 Test Speed: HIGH  
 Temperature:25.3DEG  
 Operators:admin  
 Test Date:2022-03-16

□ Range: 0 - 180DEG  
 □ Interval: 1.0DEG  
 Test System:EVERFINE GO-2000B\_V1 SYSTEM V2.00.411  
 Humidity:65.0%  
 Test Distance:8.780m [K=1.0000]  
 Remarks:

**WEC AND CCEC**

Test:U:120.08V I:0.2614A P:28.783W PF:0.9158 Freq:60.00Hz Lamp Flux:2126.46x1 lm		
NAME: ASD lighting Corp	TYPE:	WEIGHT:
SPEC.:ASD-LFC-SN-16D28-AC-4000K	DIM.:	SERIAL No.:
MFR.: ASD lighting Corp	SUR.:0.43*0.39	Shielding Angle:

<input type="checkbox"/> cc	80%			70%			50%			30%			10%			0
<input type="checkbox"/> w	50%	30%	10%	50%	30%	10%	50%	30%	10%	50%	30%	10%	50%	30%	10%	0
<input type="checkbox"/> fc	20%			20%			20%			20%			20%			0
RCR	RCR:Room Cavity Ratio						Wall Exitance Coefficients (WEC)									
0.0																
1.0	.357	.203	.064	.344	.196	.062	.319	.183	.058	.296	.171	.055	.275	.159	.051	
2.0	.316	.173	.053	.304	.168	.052	.282	.157	.049	.261	.146	.046	.241	.137	.043	
3.0	.284	.151	.045	.273	.146	.044	.253	.137	.042	.234	.128	.039	.216	.120	.037	
4.0	.258	.134	.039	.248	.130	.038	.229	.122	.036	.212	.114	.034	.196	.107	.032	
5.0	.235	.120	.035	.227	.116	.034	.210	.109	.032	.194	.102	.030	.179	.096	.029	
6.0	.217	.109	.031	.208	.105	.030	.193	.099	.029	.179	.093	.027	.165	.087	.026	
7.0	.200	.099	.028	.193	.096	.027	.179	.090	.026	.166	.085	.025	.153	.080	.023	
8.0	.186	.091	.026	.179	.088	.025	.166	.083	.024	.154	.078	.023	.143	.073	.021	
9.0	.174	.084	.023	.168	.082	.023	.156	.077	.022	.144	.072	.021	.134	.068	.020	
10.0	.163	.078	.022	.157	.076	.021	.146	.072	.020	.136	.067	.019	.126	.063	.018	

<input type="checkbox"/> cc	80%			70%			50%			30%			10%			0
<input type="checkbox"/> w	50%	30%	10%	50%	30%	10%	50%	30%	10%	50%	30%	10%	50%	30%	10%	0
<input type="checkbox"/> fc	20%			20%			20%			20%			20%			0
RCR	RCR:Room Cavity Ratio						Ceiling Cavity Exitance Coefficients (CCEC)									
0.0	.345	.345	.345	.295	.295	.295	.201	.201	.201	.116	.116	.116	.037	.037	.037	
1.0	.339	.311	.286	.290	.267	.246	.199	.184	.170	.114	.106	.099	.037	.034	.032	
2.0	.332	.288	.252	.284	.248	.218	.195	.172	.152	.112	.100	.089	.036	.032	.029	
3.0	.325	.272	.230	.278	.235	.199	.191	.163	.140	.110	.095	.082	.035	.031	.027	
4.0	.317	.259	.215	.272	.224	.187	.187	.156	.132	.108	.091	.078	.035	.030	.026	
5.0	.310	.250	.205	.266	.216	.178	.183	.151	.126	.106	.089	.075	.034	.029	.025	
6.0	.302	.242	.198	.260	.209	.172	.179	.146	.122	.104	.086	.072	.034	.028	.024	
7.0	.296	.235	.193	.254	.204	.168	.176	.143	.119	.102	.084	.071	.033	.028	.023	
8.0	.289	.229	.189	.249	.199	.164	.172	.140	.117	.100	.082	.069	.032	.027	.023	
9.0	.283	.225	.185	.244	.195	.162	.169	.137	.115	.098	.081	.068	.032	.027	.023	
10.0	.277	.221	.183	.239	.192	.160	.166	.135	.113	.097	.080	.068	.031	.026	.022	

C Range: 0 - 360DEG  
 C Interval: 30.0DEG  
 Test Speed: HIGH  
 Temperature:25.3DEG  
 Operators:admin  
 Test Date:2022-03-16

Range: 0 - 180DEG  
 Interval: 1.0DEG  
 Test System:EVERFINE GO-2000B\_V1 SYSTEM V2.00.411  
 Humidity:65.0%  
 Test Distance:8.780m [K=1.0000]  
 Remarks:

**UGR(Unified Glare Rating) Table**

Test:U:120.08V I:0.2614A P:28.783W PF:0.9158 Freq:60.00Hz Lamp Flux:2126.46x1 lm										
NAME: ASD lighting Corp					TYPE:			WEIGHT:		
SPEC.:ASD-LFC-SN-16D28-AC-4000K					DIM.:			SERIAL No.:		
MFR.: ASD lighting Corp					SUR.:0.43*0.39			Shielding Angle:		
ceiling/cavity	0.7	0.7	0.5	0.5	0.3	0.7	0.7	0.5	0.5	0.3
walls	0.5	0.3	0.5	0.3	0.3	0.5	0.3	0.5	0.3	0.3
working plane	0.2	0.2	0.2	0.2	0.2	0.2	0.2	0.2	0.2	0.2
Room dimensions	Viewed crosswise					Viewed endwise				
x = 2H y = 2H	15.5	16.9	16.1	17.4	18.0	15.5	16.8	16.1	17.4	18.0
3H	17.5	18.7	18.1	19.3	19.9	17.5	18.7	18.1	19.3	19.9
4H	18.5	19.7	19.1	20.2	20.9	18.5	19.7	19.1	20.3	20.9
6H	19.5	20.6	20.1	21.2	21.9	19.5	20.6	20.1	21.2	21.9
8H	20.1	21.1	20.7	21.7	22.4	20.0	21.0	20.6	21.6	22.4
12H	20.7	21.7	21.4	22.4	23.1	20.6	21.6	21.2	22.2	22.9
4H 2H	16.2	17.3	16.8	17.9	18.6	16.2	17.3	16.8	17.9	18.6
3H	18.4	19.4	19.0	20.0	20.7	18.4	19.4	19.0	20.0	20.7
4H	19.5	20.4	20.2	21.1	21.8	19.5	20.4	20.2	21.1	21.8
6H	20.7	21.5	21.4	22.2	23.0	20.7	21.5	21.4	22.2	22.9
8H	21.4	22.1	22.1	22.8	23.6	21.3	22.0	22.0	22.7	23.5
12H	22.1	22.8	22.8	23.5	24.4	22.0	22.7	22.7	23.4	24.2
8H 4H	19.9	20.7	20.6	21.4	22.2	19.9	20.7	20.6	21.4	22.2
6H	21.4	22.0	22.1	22.7	23.6	21.3	22.0	22.0	22.7	23.5
8H	22.2	22.8	22.9	23.5	24.4	22.1	22.7	22.8	23.4	24.3
12H	23.2	23.7	23.9	24.4	25.3	23.0	23.5	23.8	24.3	25.1
12H 4H	20.0	20.7	20.7	21.4	22.2	20.0	20.7	20.7	21.4	22.2
6H	21.5	22.1	22.3	22.8	23.7	21.5	22.1	22.2	22.8	23.7
8H	22.5	23.0	23.2	23.7	24.6	22.4	22.9	23.1	23.6	24.5
Variations with the observer position at spacings:										
S = 1.0H	+ 0.1 / - 0.1					+ 0.1 / - 0.1				
1.5H	+ 0.2 / - 0.3					+ 0.2 / - 0.3				
2.0H	+ 0.2 / - 0.4					+ 0.2 / - 0.4				

CIE Pub.117, 2126 lm Total Lamp Luminous Flux Corrected (8log(F/F0) = 2.6)  
 Area: 0.1677 m2

C Range: 0 - 360DEG  
 C Interval: 30.0DEG  
 Test Speed: HIGH  
 Temperature:25.3DEG  
 Operators:admin  
 Test Date:2022-03-16

Range: 0 - 180DEG  
 Interval: 1.0DEG  
 Test System:EVERFINE GO-2000B\_V1 SYSTEM V2.00.411  
 Humidity:65.0%  
 Test Distance:8.780m [K=1.0000]  
 Remarks:

**UTILIZATION FACTORS TABLE**

Test:U:120.08V I:0.2614A P:28.783W PF:0.9158 Freq:60.00Hz Lamp Flux:2126.46x1 lm		
NAME: ASD lighting Corp	TYPE:	WEIGHT:
SPEC.:ASD-LFC-SN-16D28-AC-4000K	DIM.:	SERIAL No.:
MFR.: ASD lighting Corp	SUR.:0.43*0.39	Shielding Angle:

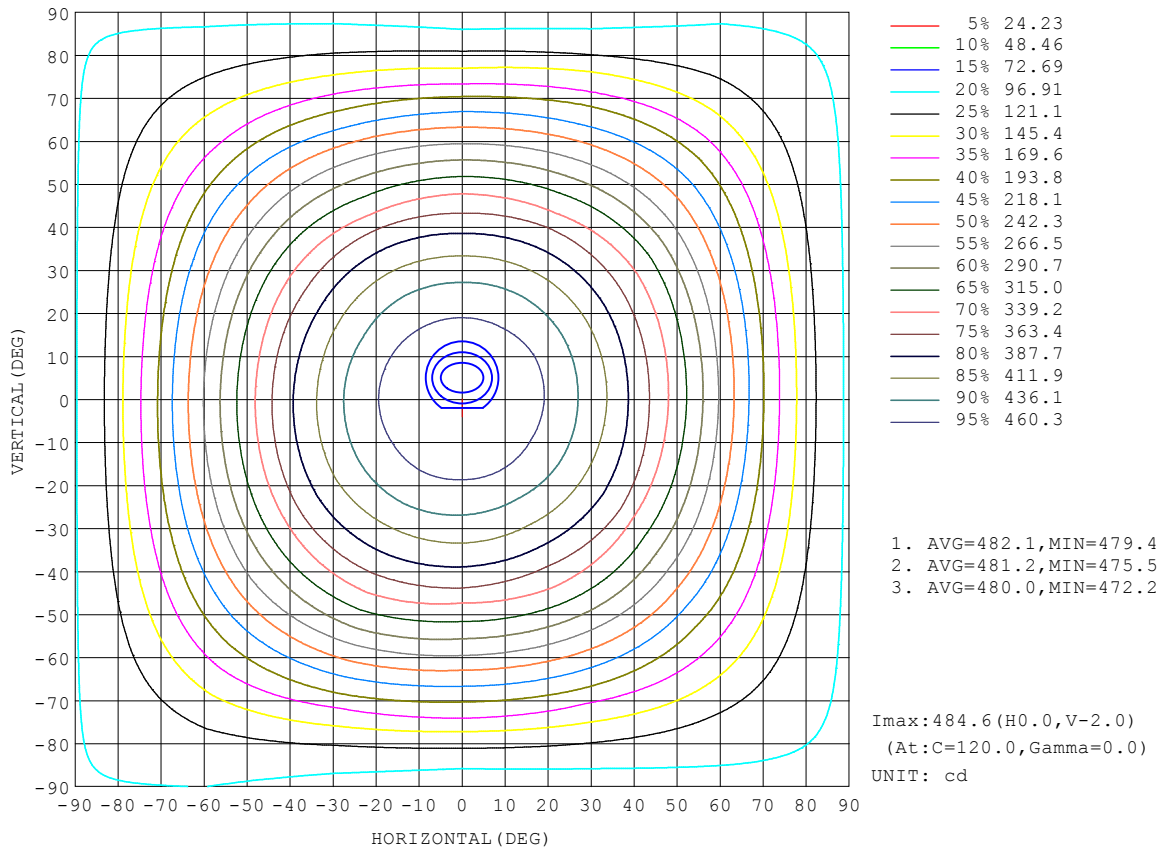
REFLECTANCE										
Ceiling	0.8	0.8	0.8	0.7	0.7	0.7	0.5	0.5	0.5	0
Walls	0.7	0.5	0.3	0.7	0.5	0.3	0.7	0.5	0.3	0
Working plane	0.2	0.2	0.2	0.2	0.2	0.2	0.2	0.2	0.2	0
ROOM INDEX	UTILIZATION FACTORS (PERCENT) $k(RI) \times RCR = 5$									
k = 0.60	48	36	29	47	36	29	45	35	28	22
0.80	58	45	37	56	44	37	53	43	36	28
1.00	66	53	45	64	52	44	60	52	43	34
1.25	73	61	52	70	59	51	65	56	49	40
1.50	78	66	58	75	64	57	70	61	54	44
2.00	85	75	67	82	72	65	76	68	62	50
2.50	89	80	72	86	77	70	79	72	66	53
3.00	93	84	77	89	81	75	82	76	71	57
4.00	98	90	84	93	87	81	86	81	76	61
5.00	101	94	89	96	91	86	88	84	80	64
ROOM INDEX	UF(total)									Direct
According to DIN EN 13032-2 2004			Suspended				SHRNOM = 1.25			

C Range: 0 - 360DEG  
 C Interval: 30.0DEG  
 Test Speed: HIGH  
 Temperature:25.3DEG  
 Operators:admin  
 Test Date:2022-03-16

Range: 0 - 180DEG  
 Interval: 1.0DEG  
 Test System:EVERFINE GO-2000B\_V1 SYSTEM V2.00.411  
 Humidity:65.0%  
 Test Distance:8.780m [K=1.0000]  
 Remarks:

**ISOCANDELA DIAGRAM**

Test:U:120.08V I:0.2614A P:28.783W PF:0.9158 Freq:60.00Hz Lamp Flux:2126.46x1 lm		
NAME: ASD lighting Corp	TYPE:	WEIGHT:
SPEC.:ASD-LFC-SN-16D28-AC-4000K	DIM.:	SERIAL No.:
MFR.: ASD lighting Corp	SUR.:0.43*0.39	Shielding Angle:



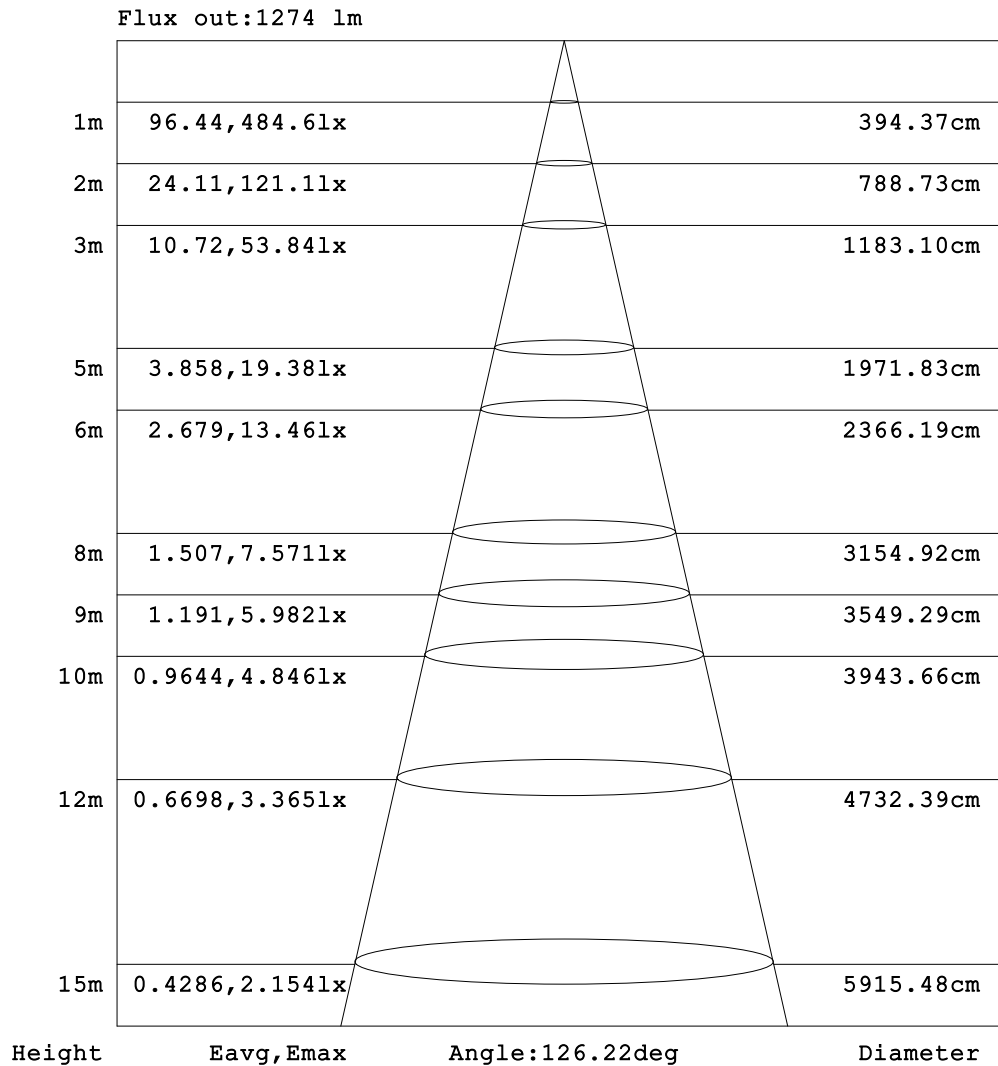
C Range: 0 - 360DEG  
 C Interval: 30.0DEG  
 Test Speed: HIGH  
 Temperature: 25.3DEG  
 Operators: admin  
 Test Date: 2022-03-16

Range: 0 - 180DEG  
 Interval: 1.0DEG  
 Test System: EVERFINE GO-2000B\_V1 SYSTEM V2.00.411  
 Humidity: 65.0%  
 Test Distance: 8.780m [K=1.0000]  
 Remarks:



**AAI Figure**

Test:U:120.08V I:0.2614A P:28.783W PF:0.9158 Freq:60.00Hz Lamp Flux:2126.46x1 lm		
NAME: ASD lighting Corp	TYPE:	WEIGHT:
SPEC.:ASD-LFC-SN-16D28-AC-4000K	DIM.:	SERIAL No.:
MFR.: ASD lighting Corp	SUR.:0.43*0.39	Shielding Angle:



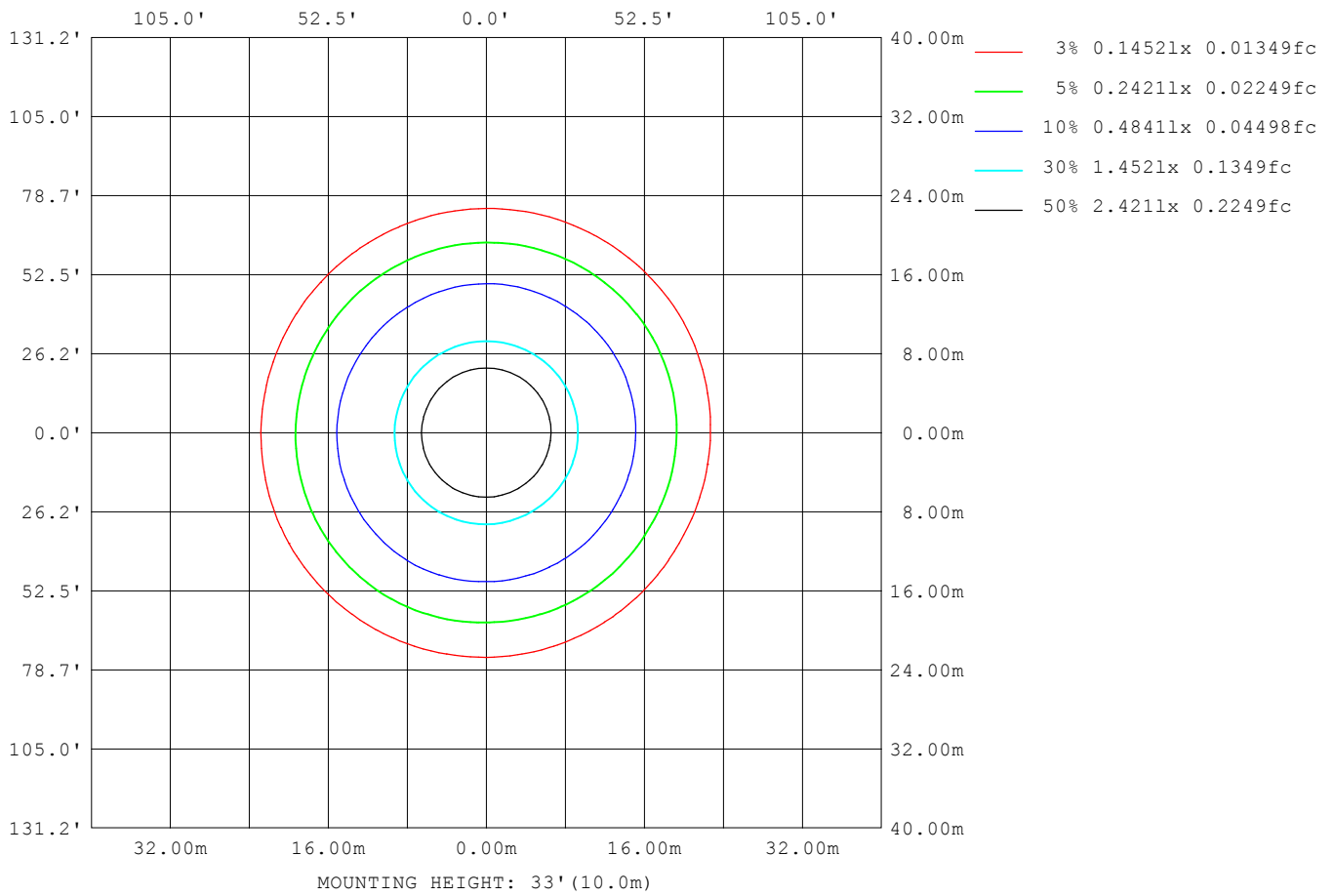
Note:The Curves indicate the illuminated area and the average illumination when the luminaire is at different distance.

C Range: 0 - 360DEG  
 C Interval: 30.0DEG  
 Test Speed: HIGH  
 Temperature:25.3DEG  
 Operators:admin  
 Test Date:2022-03-16

Range: 0 - 180DEG  
 Interval: 1.0DEG  
 Test System:EVERFINE GO-2000B\_V1 SYSTEM V2.00.411  
 Humidity:65.0%  
 Test Distance:8.780m [K=1.0000]  
 Remarks:

**ISOLUX DIAGRAM**

Test:U:120.08V I:0.2614A P:28.783W PF:0.9158 Freq:60.00Hz Lamp Flux:2126.46x1 lm		
NAME: ASD lighting Corp	TYPE:	WEIGHT:
SPEC.:ASD-LFC-SN-16D28-AC-4000K	DIM.:	SERIAL No.:
MFR.: ASD lighting Corp	SUR.:0.43*0.39	Shielding Angle:



C Range: 0 - 360DEG  
 C Interval: 30.0DEG  
 Test Speed: HIGH  
 Temperature:25.3DEG  
 Operators:admin  
 Test Date:2022-03-16

Range: 0 - 180DEG  
 Interval: 1.0DEG  
 Test System:EVERFINE GO-2000B\_V1 SYSTEM V2.00.411  
 Humidity:65.0%  
 Test Distance:8.780m [K=1.0000]  
 Remarks:

**LED Avg.L Report**

Test:U:120.08V I:0.2614A P:28.783W PF:0.9158 Freq:60.00Hz Lamp Flux:2126.46x1 lm		
NAME: ASD lighting Corp	TYPE:	WEIGHT:
SPEC.:ASD-LFC-SN-16D28-AC-4000K	DIM.:	SERIAL No.:
MFR.: ASD lighting Corp	SUR.:0.43*0.39	Shielding Angle:

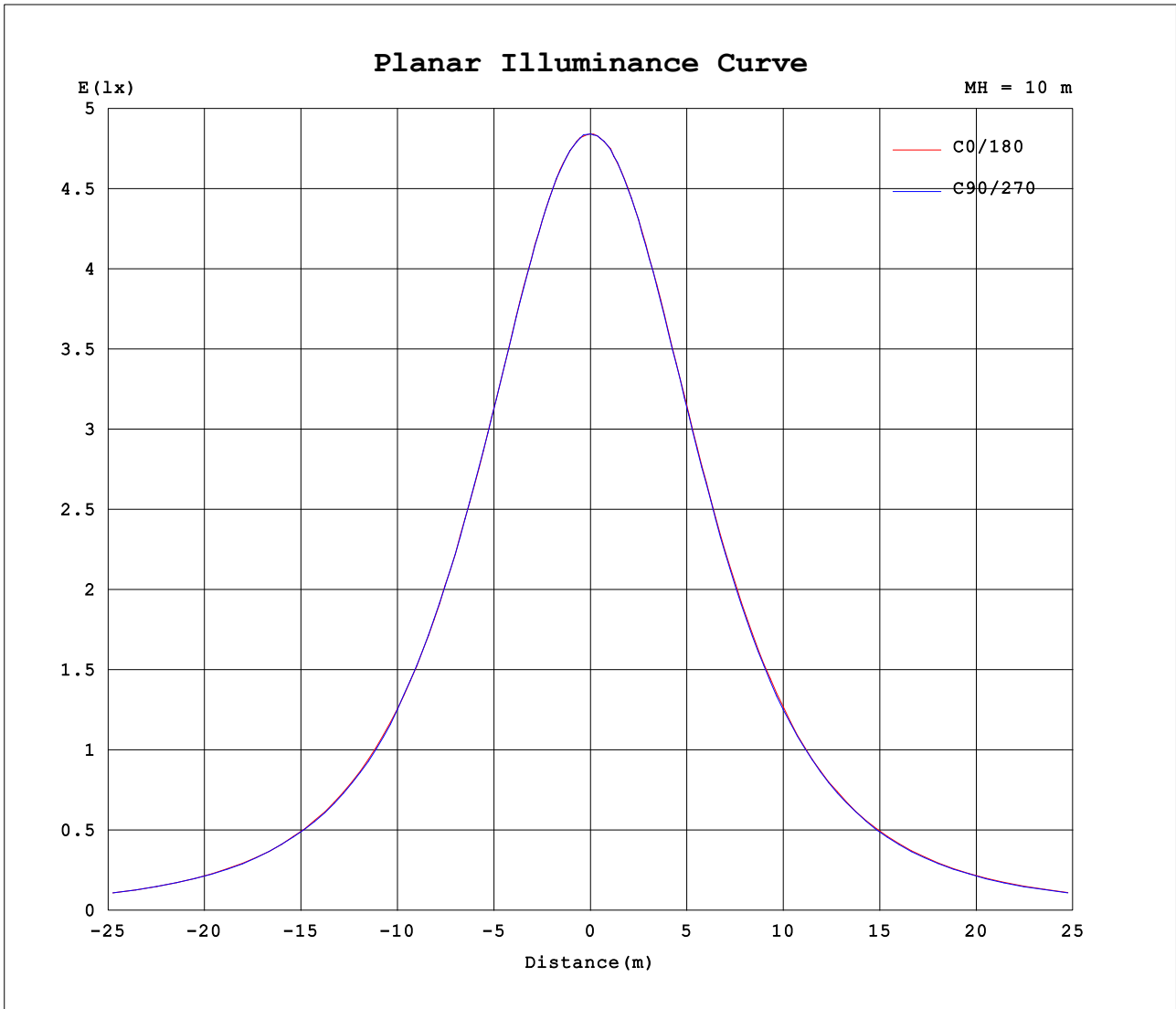
AvgL	cd/m2
L_0~180 (65) av	3269
L_0~180 (75) av	3825
L_0~180 (85) av	7609
L_90~270 (65) av	3234
L_90~270 (75) av	3695
L_90~270 (85) av	6879
L_45 (65) av	3257
L_45 (75) av	3761
L_45 (85) av	7329

Standard: GB/T 29293-2012

C Range: 0 - 360DEG  
 C Interval: 30.0DEG  
 Test Speed: HIGH  
 Temperature:25.3DEG  
 Operators:admin  
 Test Date:2022-03-16

Range: 0 - 180DEG  
 Interval: 1.0DEG  
 Test System:EVERFINE GO-2000B\_V1 SYSTEM V2.00.411  
 Humidity:65.0%  
 Test Distance:8.780m [K=1.0000]  
 Remarks:

Planar Illuminance Curve



C Range: 0 - 360DEG  
 C Interval: 30.0DEG  
 Test Speed: HIGH  
 Temperature:25.3DEG  
 Operators:admin  
 Test Date:2022-03-16

Range: 0 - 180DEG  
 Interval: 1.0DEG  
 Test System:EVERFINE GO-2000B\_V1 SYSTEM V2.00.411  
 Humidity:65.0%  
 Test Distance:8.780m [K=1.0000]  
 Remarks:

LUMINOUS DISTRIBUTION INTENSITY DATA

Test:U:120.08V I:0.2614A P:28.783W PF:0.9158 Freq:60.00Hz Lamp Flux:2126.46x1 lm		
NAME: ASD lighting Corp	TYPE:	WEIGHT:
SPEC.:ASD-LFC-SN-16D28-AC-4000K	DIM.:	SERIAL No.:
MFR.: ASD lighting Corp	SUR.:0.43*0.39	Shielding Angle:

Table--1

UNIT: cd

C (DEG) □ (DEG)	0	30	60	90	120	150	180	210	240	270	300	330							
0	484	484	483	484	485	484	484	484	483	484	485	484							
5	482	482	481	482	481	482	483	482	482	483	483	483							
10	477	477	476	478	476	477	478	477	478	477	477	478							
15	469	468	468	469	469	469	470	469	470	469	469	469							
20	458	456	456	457	458	458	459	458	458	458	458	459							
25	443	443	440	443	444	445	445	443	443	444	445	444							
30	425	425	422	426	426	428	427	425	426	426	426	426							
35	405	405	402	405	406	409	407	404	405	405	405	406							
40	381	380	379	382	385	386	385	381	382	381	382	383							
45	356	354	353	355	361	361	359	356	353	354	354	358							
50	327	321	325	324	334	331	328	326	322	326	324	331							
55	298	292	294	294	304	301	298	294	293	295	295	301							
60	264	260	261	263	270	270	268	261	262	263	265	267							
65	230	224	227	231	236	237	233	230	227	228	232	234							
70	195	190	194	197	202	203	199	195	194	197	200	201							
75	164	158	158	162	163	171	168	163	160	159	166	166							
80	132	129	126	128	130	137	138	132	131	127	131	135							
85	109	106	102	100	105	114	113	110	107	101	103	109							
90	93.4	89.8	85.8	84.5	90.7	97.1	95.7	91.5	90.1	86.1	87.3	93.3							
95	83.9	79.6	76.0	78.3	84.1	88.2	84.8	80.7	81.0	80.4	81.6	85.3							
100	79.6	74.4	71.5	76.5	81.5	84.2	79.9	75.4	77.2	79.0	79.7	82.2							
105	78.6	72.7	69.3	74.9	79.5	82.7	78.6	73.7	75.8	78.1	78.4	81.1							
110	78.6	72.1	66.9	72.6	77.8	81.3	78.0	72.5	74.1	76.6	76.7	80.0							
115	70.7	71.3	64.7	70.2	76.2	79.6	69.2	70.9	72.6	74.8	75.2	78.5							
120	71.0	69.7	62.4	68.3	74.3	75.5	68.6	68.6	71.2	74.0	73.4	75.4							
125	70.9	64.8	59.0	66.0	70.1	69.1	67.8	64.7	68.3	72.5	69.3	69.1							
130	70.5	59.8	54.4	63.7	63.9	64.0	66.7	60.5	63.0	70.9	63.5	63.5							
135	69.7	57.7	50.8	61.7	57.8	60.9	65.7	57.9	57.9	69.4	59.0	61.6							
140	68.5	55.9	48.4	58.0	53.1	57.6	64.9	55.5	54.9	65.7	55.7	59.7							
145	66.8	55.0	46.6	55.5	50.1	54.5	63.2	52.4	53.1	62.0	53.7	57.7							
150	63.5	53.2	46.7	52.2	49.1	51.4	59.5	49.7	51.1	59.0	54.8	57.2							
155	59.9	50.3	46.3	50.2	49.2	50.4	55.3	47.1	50.2	56.1	55.5	56.6							
160	56.3	50.0	44.7	48.3	49.7	49.8	52.7	46.6	49.4	52.3	53.0	56.6							
165	52.9	48.0	43.1	47.4	49.3	49.4	51.8	47.6	48.6	48.4	49.5	55.9							
170	50.7	44.7	43.8	47.7	48.9	49.5	51.0	48.2	46.5	46.7	45.8	51.9							
175	54.0	53.6	49.7	57.9	59.2	51.3	54.4	51.1	56.4	55.9	47.6	51.4							
180	58.8	54.1	57.0	62.8	57.5	52.1	58.8	54.2	56.9	62.7	57.6	52.1							

C Range: 0 - 360DEG  
 C Interval: 30.0DEG  
 Test Speed: HIGH  
 Temperature:25.3DEG  
 Operators:admin  
 Test Date:2022-03-16

□ Range: 0 - 180DEG  
 □ Interval: 1.0DEG  
 Test System:EVERFINE GO-2000B\_V1 SYSTEM V2.00.411  
 Humidity:65.0%  
 Test Distance:8.780m [K=1.0000]  
 Remarks: