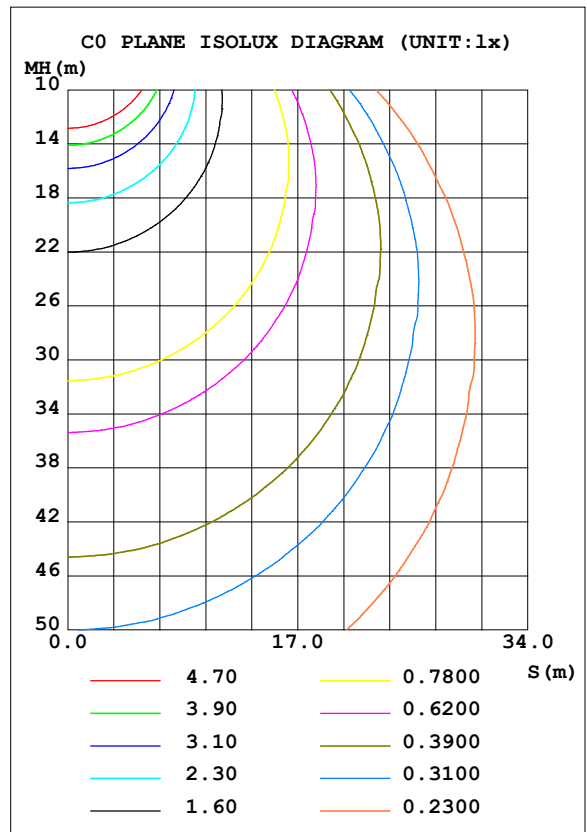
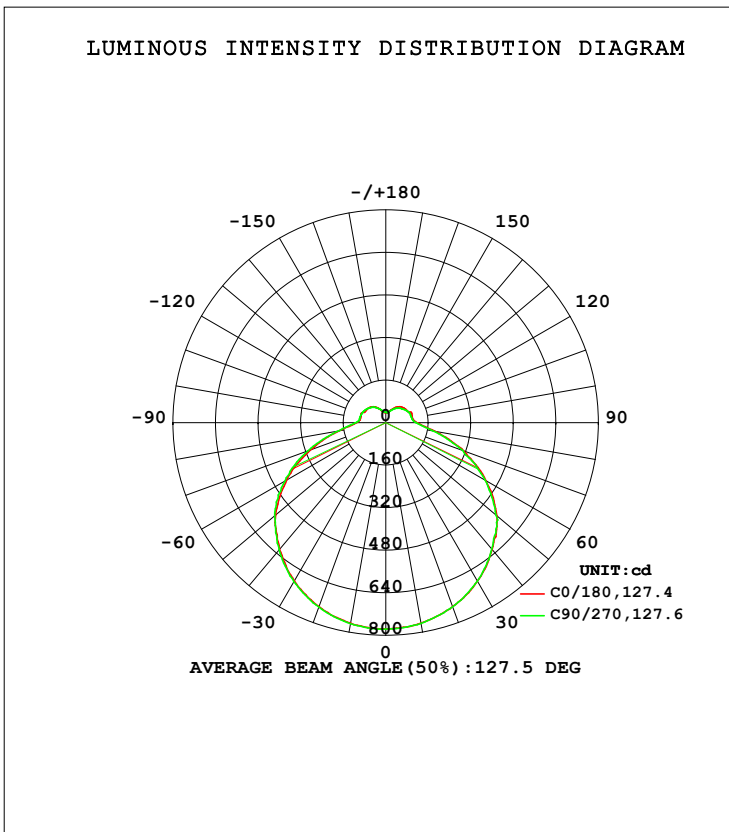


LUMINAIRE PHOTOMETRIC TEST REPORT

Test:U:120.03V I:0.3164A P:37.525W PF:0.9881 Freq:60.00Hz Lamp Flux:3229.75x1 lm		
NAME: ASD Lighting Corp	TYPE:ASD-LFC-GX-20D42S-RGB-SMARTLIGHT:	
SPEC.:ASD-LFC-GX-20D42S-RGB-SMART-5000K	DIM.:	SERIAL No.:
MFR.: ASD Lighting Corp	SUR.: -0.47	Shielding Angle:

DATA OF LAMP		PHOTOMETRIC DATA Eff: 86.07 lm/W			
MODEL		I _{max} (cd)	777.3	S/MH (C0/180)	1.32
NOMINAL POWER (W)	--	LOR (%)	100.0	S/MH (C90/270)	1.32
RATED VOLTAGE (V)	--	TOTAL FLUX (lm)	3229.7	<input type="checkbox"/> UP, DN (C0-180)	8.2, 41.7
NOMINAL FLUX (lm)	3229.75	CIE CLASS	SEMI-D.	<input type="checkbox"/> UP, DN (C180-360)	8.2, 41.8
LAMPS INSIDE	1	<input type="checkbox"/> up (%)	16.4	CIBSE SHR NOM	1.50
TEST VOLTAGE (V)	--	<input type="checkbox"/> down (%)	83.6	CIBSE SHR MAX	1.55



C Range: 0 - 360DEG
 C Interval: 22.5DEG
 Test Speed: HIGH
 Temperature: 25.3DEG
 Operators: chen
 Test Date: 2022-10-04

Range: 0 - 180DEG
 Interval: 1.0DEG
 Test System: EVERFINE GO-3000H_V1 SYSTEM V2.00.411
 Humidity: 65.0%
 Test Distance: 8.650m [K=1.0000]
 Remarks:

ZONAL FLUX DIAGRAM

ZONAL FLUX DIAGRAM:

mm	C0	C45	C90	C135	C180	C225	C270	C315	mm	□ zone	□ total	%lum, lamp
10	765.0	765.2	766.6	766.0	765.9	766.7	767.6	768.4	0- 10	73.63	73.63	2.28,2.28
20	735.8	736.0	736.5	735.9	735.9	737.4	737.9	738.6	10- 20	213.1	286.7	8.88,8.88
30	688.8	688.9	688.5	688.2	687.7	688.6	691.8	694.2	20- 30	330.2	616.9	19.1,19.1
40	622.2	622.1	619.7	619.7	622.1	621.9	623.9	625.6	30- 40	412.2	1029	31.9,31.9
50	545.7	548.6	540.7	539.9	541.0	544.0	546.2	547.3	40- 50	452.0	1481	45.9,45.9
60	434.3	431.1	431.3	431.1	429.9	436.2	437.6	439.9	50- 60	438.8	1920	59.4,59.4
70	312.2	306.8	308.7	303.0	301.7	303.6	311.6	308.7	60- 70	367.9	2288	70.8,70.8
80	186.2	186.1	181.1	180.5	177.8	179.7	181.3	186.5	70- 80	257.2	2545	78.8,78.8
90	117.9	117.2	114.0	112.4	110.2	111.4	113.5	117.0	80- 90	154.0	2699	83.6,83.6
100	102.2	100.1	99.92	97.22	97.59	97.00	100.7	100.5	90-100	113.9	2813	87.1,87.1
110	104.2	96.31	98.49	93.36	98.92	91.37	97.05	95.15	100-110	103.6	2917	90.3,90.3
120	92.22	88.75	91.09	87.94	88.70	87.98	93.03	89.31	110-120	92.98	3010	93.2,93.2
130	87.56	79.69	81.30	80.47	85.62	82.14	85.20	82.04	120-130	77.37	3087	95.6,95.6
140	78.42	66.85	72.09	68.96	78.19	70.11	76.50	68.34	130-140	60.19	3147	97.4,97.4
150	63.36	53.76	59.67	56.08	65.32	57.33	63.81	55.86	140-150	41.57	3189	98.7,98.7
160	48.09	45.08	46.79	46.56	49.71	48.11	51.41	47.47	150-160	24.93	3214	99.5,99.5
170	38.85	39.47	40.09	39.09	39.45	41.43	41.76	40.66	160-170	12.45	3226	99.9,99.9
180	40.09	37.46	39.95	39.13	40.10	37.48	39.90	39.15	170-180	3.732	3230	100,100
DEG	LUMINOUS INTENSITY:cd									UNIT:lm		

Conical surface Flux(90deg): 1252.4 lm

%lum = 38.8%

%lamp = 38.8%

Conical surface Flux(120deg): 1919.9 lm

%lum = 59.4%

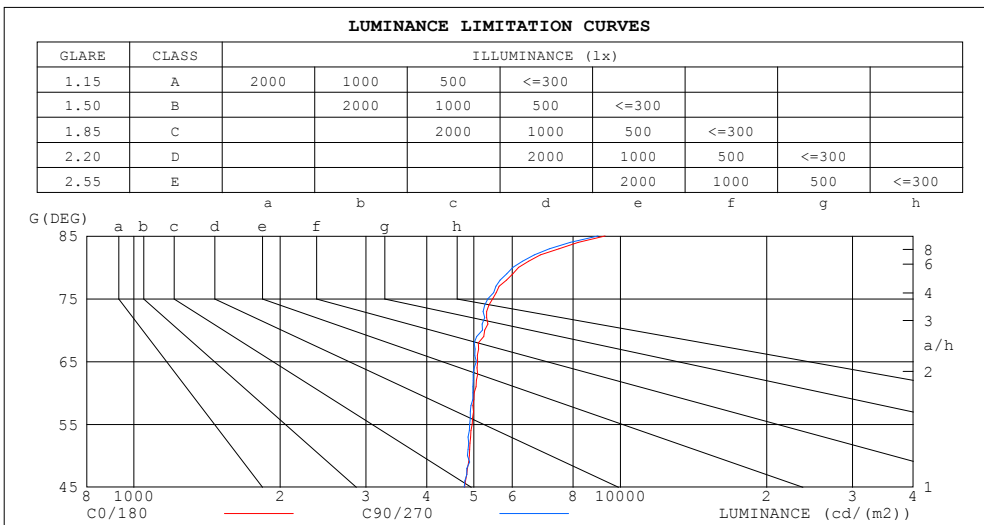
%lamp = 59.4%

C Range: 0 - 360DEG
 C Interval: 22.5DEG
 Test Speed: HIGH
 Temperature:25.3DEG
 Operators:chen
 Test Date:2022-10-04

□ Range: 0 - 180DEG
 □ Interval: 1.0DEG
 Test System:EVERFINE GO-3000H_V1 SYSTEM V2.00.411
 Humidity:65.0%
 Test Distance:8.650m [K=1.0000]
 Remarks:

LUMINANCE LIMITATION CURVES

Test:U:120.03V I:0.3164A P:37.525W PF:0.9881 Freq:60.00Hz Lamp Flux:3229.75x1 lm		
NAME: ASD Lighting Corp	TYPE:ASD-LFC-GX-20D42S-RGB-SMARTLIGHT:	
SPEC.:ASD-LFC-GX-20D42S-RGB-SMART-5000K	DIM.:	SERIAL No.:
MFR.: ASD Lighting Corp	SUR.: -0.47	Shielding Angle:



LUMINANCE cd/(m2)		
G (DEG)	C0/180	C90/270
85	9299	8997
80	6182	6013
75	5467	5340
70	5263	5205
65	5092	5057
60	5009	4974
55	4962	4900
50	4896	4851
45	4788	4775

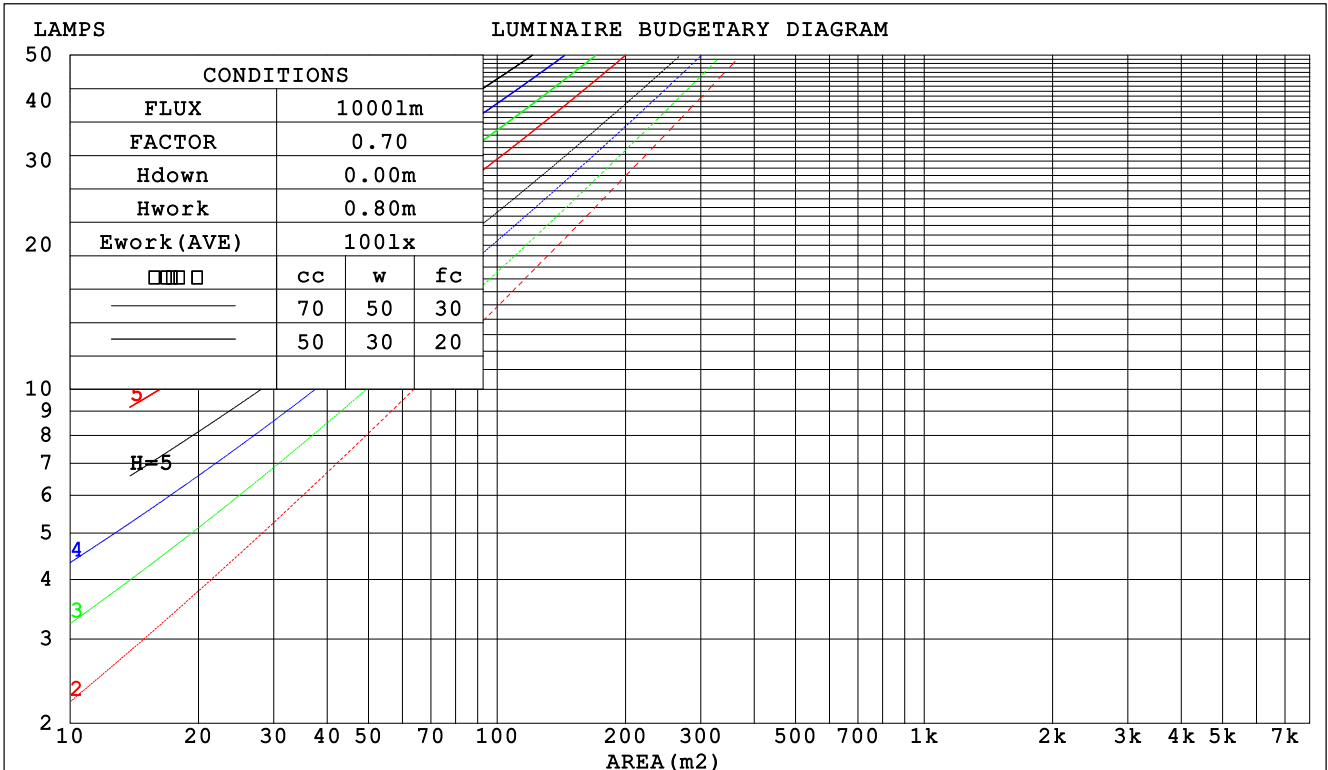
C Range: 0 - 360DEG
 C Interval: 22.5DEG
 Test Speed: HIGH
 Temperature:25.3DEG
 Operators:chen
 Test Date:2022-10-04

Range: 0 - 180DEG
 Interval: 1.0DEG
 Test System:EVERFINE GO-3000H_V1 SYSTEM V2.00.411
 Humidity:65.0%
 Test Distance:8.650m [K=1.0000]
 Remarks:

CU AND LUMINAIRE BUDGETARY ESTIMATE DIAGRAM

Test:U:120.03V I:0.3164A P:37.525W PF:0.9881 Freq:60.00Hz Lamp Flux:3229.75x1 lm		
NAME: ASD Lighting Corp	TYPE:ASD-LFC-GX-20D42S-RGB-SMARTLIGHT:	
SPEC.:ASD-LFC-GX-20D42S-RGB-SMART-5000K	DIM.:	SERIAL No.:
MFR.: ASD Lighting Corp	SUR.: -0.47	Shielding Angle:

□cc	80%			70%			50%			30%			10%			0
□w	50%	30%	10%	50%	30%	10%	50%	30%	10%	50%	30%	10%	50%	30%	10%	0
□fc	20%			20%			20%			20%			20%			0
RCR	RCR:Room Cavity Ratio						Coefficients of Utilization(CU)									
0.0	1.15	1.15	1.15	1.11	1.11	1.11	1.02	1.02	1.02	.94	.94	.94	.87	.87	.87	.84
1.0	.98	.93	.89	.94	.90	.86	.87	.83	.80	.80	.77	.75	.74	.72	.70	.66
2.0	.84	.77	.71	.81	.74	.69	.75	.69	.64	.69	.64	.61	.64	.60	.57	.54
3.0	.73	.65	.58	.70	.63	.56	.65	.59	.53	.60	.55	.50	.56	.51	.47	.44
4.0	.65	.55	.48	.62	.54	.47	.57	.50	.45	.53	.47	.42	.49	.44	.40	.37
5.0	.57	.48	.41	.55	.47	.40	.51	.44	.38	.47	.41	.36	.44	.39	.34	.32
6.0	.51	.42	.36	.49	.41	.35	.46	.39	.33	.43	.36	.32	.40	.34	.30	.28
7.0	.46	.37	.31	.45	.36	.30	.42	.34	.29	.39	.32	.28	.36	.31	.26	.24
8.0	.42	.33	.28	.41	.33	.27	.38	.31	.26	.35	.29	.25	.33	.28	.24	.21
9.0	.38	.30	.25	.37	.29	.24	.35	.28	.23	.33	.27	.22	.30	.25	.21	.19
10.0	.35	.27	.22	.34	.27	.22	.32	.25	.21	.30	.24	.20	.28	.23	.19	.17



C Range: 0 - 360DEG
 C Interval: 22.5DEG
 Test Speed: HIGH
 Temperature:25.3DEG
 Operators:chen
 Test Date:2022-10-04

□ Range: 0 - 180DEG
 □ Interval: 1.0DEG
 Test System:EVERFINE GO-3000H_V1 SYSTEM V2.00.411
 Humidity:65.0%
 Test Distance:8.650m [K=1.0000]
 Remarks:

WEC AND CCEC

Test:U:120.03V I:0.3164A P:37.525W PF:0.9881 Freq:60.00Hz Lamp Flux:3229.75x1 lm		
NAME: ASD Lighting Corp	TYPE:ASD-LFC-GX-20D42S-RGB-SMARTLIGHT:	
SPEC.:ASD-LFC-GX-20D42S-RGB-SMART-5000K	DIM.:	SERIAL No.:
MFR.: ASD Lighting Corp	SUR.: -0.47	Shielding Angle:

<input type="checkbox"/> cc	80%			70%			50%			30%			10%			0
<input type="checkbox"/> w	50%	30%	10%	50%	30%	10%	50%	30%	10%	50%	30%	10%	50%	30%	10%	0
<input type="checkbox"/> fc	20%			20%			20%			20%			20%			0
RCR	RCR:Room Cavity Ratio						Wall Exitance Coefficients (WEC)									
0.0																
1.0	.349	.199	.063	.337	.192	.061	.315	.180	.058	.294	.169	.054	.274	.159	.051	
2.0	.313	.172	.053	.302	.166	.051	.282	.157	.049	.263	.147	.046	.245	.139	.044	
3.0	.283	.151	.045	.273	.146	.044	.255	.138	.042	.237	.130	.040	.222	.123	.038	
4.0	.258	.134	.039	.249	.130	.038	.232	.123	.037	.216	.116	.035	.202	.110	.033	
5.0	.236	.120	.035	.228	.117	.034	.213	.111	.033	.198	.105	.031	.185	.099	.030	
6.0	.217	.109	.031	.210	.106	.031	.196	.100	.029	.183	.095	.028	.171	.090	.027	
7.0	.201	.099	.028	.194	.097	.028	.182	.092	.026	.170	.087	.025	.159	.082	.024	
8.0	.187	.091	.026	.181	.089	.025	.169	.085	.024	.158	.080	.023	.148	.076	.022	
9.0	.175	.085	.024	.169	.082	.023	.158	.078	.022	.148	.074	.021	.139	.070	.020	
10.0	.164	.079	.022	.159	.077	.021	.149	.073	.021	.139	.069	.020	.131	.066	.019	

<input type="checkbox"/> cc	80%			70%			50%			30%			10%			0
<input type="checkbox"/> w	50%	30%	10%	50%	30%	10%	50%	30%	10%	50%	30%	10%	50%	30%	10%	0
<input type="checkbox"/> fc	20%			20%			20%			20%			20%			0
RCR	RCR:Room Cavity Ratio						Ceiling Cavity Exitance Coefficients (CCEC)									
0.0	.316	.316	.316	.270	.270	.270	.184	.184	.184	.106	.106	.106	.034	.034	.034	
1.0	.309	.282	.257	.265	.242	.222	.181	.167	.153	.104	.096	.089	.033	.031	.029	
2.0	.302	.259	.223	.259	.223	.192	.177	.154	.134	.102	.090	.079	.033	.029	.026	
3.0	.295	.242	.200	.253	.209	.174	.173	.145	.122	.100	.085	.072	.032	.028	.024	
4.0	.287	.230	.185	.246	.198	.161	.170	.138	.113	.098	.081	.067	.032	.026	.022	
5.0	.280	.220	.175	.240	.190	.152	.166	.133	.108	.096	.078	.064	.031	.025	.021	
6.0	.273	.212	.168	.234	.183	.146	.162	.128	.103	.094	.075	.061	.030	.025	.020	
7.0	.266	.205	.162	.229	.178	.142	.158	.125	.100	.092	.073	.060	.030	.024	.020	
8.0	.259	.199	.158	.223	.173	.138	.154	.121	.098	.090	.072	.058	.029	.023	.019	
9.0	.253	.195	.155	.218	.169	.135	.151	.119	.096	.088	.070	.057	.029	.023	.019	
10.0	.247	.190	.153	.213	.165	.133	.148	.116	.095	.086	.069	.056	.028	.023	.019	

C Range: 0 - 360DEG
 C Interval: 22.5DEG
 Test Speed: HIGH
 Temperature:25.3DEG
 Operators:chen
 Test Date:2022-10-04

Range: 0 - 180DEG
 Interval: 1.0DEG
 Test System:EVERFINE GO-3000H_V1 SYSTEM V2.00.411
 Humidity:65.0%
 Test Distance:8.650m [K=1.0000]
 Remarks:

UGR(Unified Glare Rating) Table

Test:U:120.03V I:0.3164A P:37.525W PF:0.9881 Freq:60.00Hz Lamp Flux:3229.75x1 lm		
NAME: ASD Lighting Corp	TYPE:ASD-LFC-GX-20D42S-RGB-SMARTIGHT:	
SPEC.:ASD-LFC-GX-20D42S-RGB-SMART-5000K	DIM.:	SERIAL No.:
MFR.: ASD Lighting Corp	SUR.: -0.47	Shielding Angle:

ceiling/cavity	0.7	0.7	0.5	0.5	0.3	0.7	0.7	0.5	0.5	0.3
walls	0.5	0.3	0.5	0.3	0.3	0.5	0.3	0.5	0.3	0.3
working plane	0.2	0.2	0.2	0.2	0.2	0.2	0.2	0.2	0.2	0.2
Room dimensions	Viewed crosswise					Viewed endwise				
x = 2H y = 2H	17.6	18.9	18.1	19.4	19.9	17.5	18.9	18.0	19.4	19.9
3H	19.5	20.7	20.0	21.2	21.8	19.4	20.6	19.9	21.2	21.7
4H	20.3	21.5	20.9	22.0	22.6	20.3	21.5	20.8	22.0	22.6
6H	21.2	22.3	21.7	22.8	23.5	21.1	22.2	21.6	22.7	23.4
8H	21.6	22.7	22.2	23.2	23.9	21.5	22.6	22.1	23.1	23.7
12H	22.1	23.1	22.6	23.7	24.3	21.9	23.0	22.5	23.5	24.2
4H 2H	18.2	19.4	18.8	19.9	20.5	18.2	19.4	18.7	19.9	20.5
3H	20.3	21.3	20.9	21.9	22.5	20.2	21.3	20.8	21.9	22.5
4H	21.3	22.3	21.9	22.9	23.5	21.3	22.2	21.9	22.8	23.5
6H	22.3	23.2	23.0	23.8	24.5	22.2	23.1	22.9	23.7	24.4
8H	22.8	23.6	23.5	24.3	25.0	22.7	23.5	23.4	24.2	24.9
12H	23.4	24.1	24.1	24.8	25.5	23.3	24.0	23.9	24.7	25.4
8H 4H	21.7	22.5	22.3	23.1	23.8	21.6	22.4	22.3	23.1	23.8
6H	22.9	23.6	23.6	24.3	25.0	22.9	23.5	23.5	24.2	24.9
8H	23.6	24.2	24.3	24.9	25.7	23.5	24.1	24.2	24.8	25.6
12H	24.4	24.9	25.1	25.6	26.4	24.3	24.8	25.0	25.5	26.3
12H 4H	21.7	22.5	22.4	23.1	23.9	21.7	22.4	22.3	23.1	23.8
6H	23.1	23.7	23.8	24.3	25.1	23.0	23.6	23.7	24.3	25.1
8H	23.8	24.3	24.5	25.0	25.9	23.7	24.2	24.4	25.0	25.8
Variations with the observer position at spacings:										
S = 1.0H	+ 0.1 / - 0.1					+ 0.1 / - 0.2				
1.5H	+ 0.2 / - 0.3					+ 0.2 / - 0.3				
2.0H	+ 0.2 / - 0.3					+ 0.2 / - 0.3				

CIE Pub.117, 3230 lm Total Lamp Luminous Flux Corrected (8log(F/F0) = 4.1)
 Area: 0.173406 m2

C Range: 0 - 360DEG
 C Interval: 22.5DEG
 Test Speed: HIGH
 Temperature:25.3DEG
 Operators:chen
 Test Date:2022-10-04

Range: 0 - 180DEG
 Interval: 1.0DEG
 Test System:EVERFINE GO-3000H_V1 SYSTEM V2.00.411
 Humidity:65.0%
 Test Distance:8.650m [K=1.0000]
 Remarks:

UTILIZATION FACTORS TABLE

Test:U:120.03V I:0.3164A P:37.525W PF:0.9881 Freq:60.00Hz Lamp Flux:3229.75x1 lm		
NAME: ASD Lighting Corp	TYPE:ASD-LFC-GX-20D42S-RGB-SMARTLIGHT:	
SPEC.:ASD-LFC-GX-20D42S-RGB-SMART-5000K	DIM.:	SERIAL No.:
MFR.: ASD Lighting Corp	SUR.: -0.47	Shielding Angle:

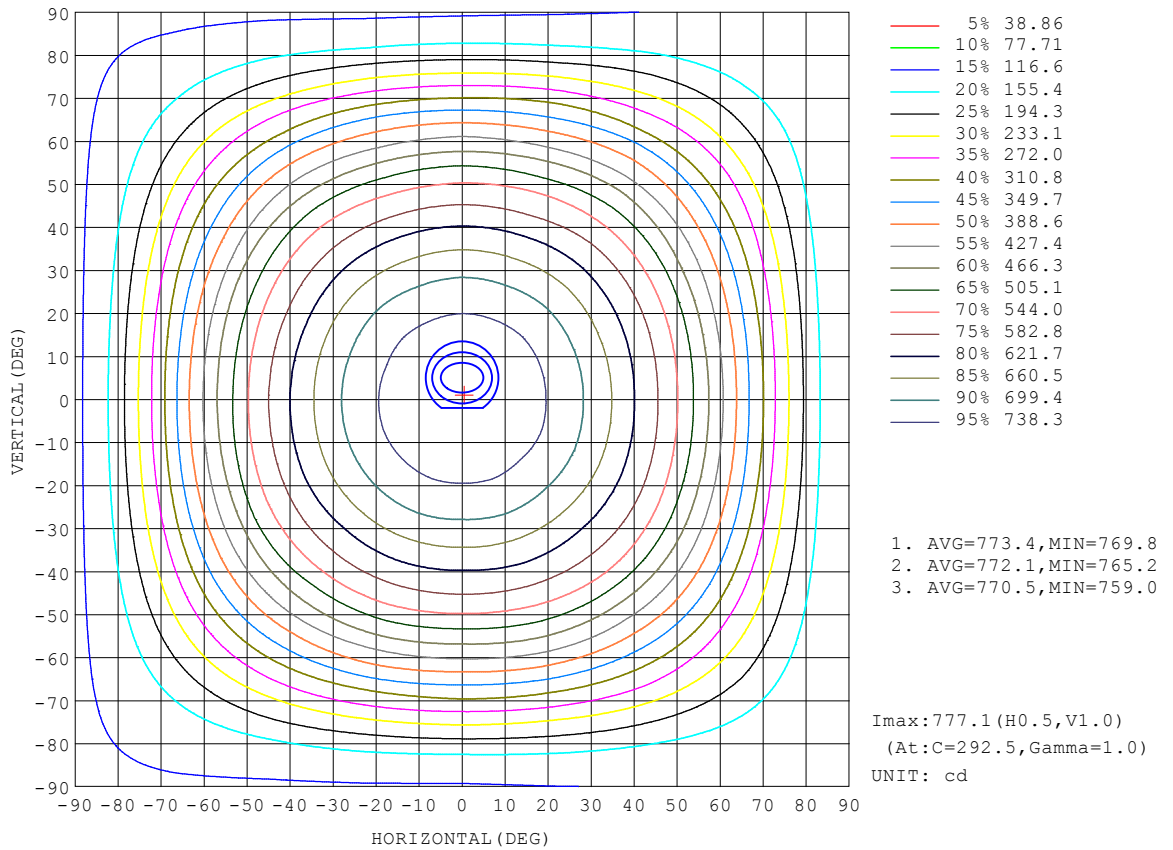
REFLECTANCE										
Ceiling	0.8	0.8	0.8	0.7	0.7	0.7	0.5	0.5	0.5	0
Walls	0.7	0.5	0.3	0.7	0.5	0.3	0.7	0.5	0.3	0
Working plane	0.2	0.2	0.2	0.2	0.2	0.2	0.2	0.2	0.2	0
ROOM INDEX	UTILIZATION FACTORS (PERCENT) $k(RI) \times RCR = 5$									
k = 0.60	50	38	30	48	37	30	47	36	30	23
0.80	59	47	39	58	46	38	55	44	37	30
1.00	67	55	47	65	54	46	62	54	45	36
1.25	74	62	54	72	61	53	68	58	52	42
1.50	79	68	60	77	66	59	72	63	57	47
2.00	87	76	69	84	74	67	78	70	64	53
2.50	91	82	74	88	79	73	82	75	69	57
3.00	95	86	79	91	84	77	85	79	73	61
4.00	99	92	86	95	89	84	88	83	79	65
5.00	102	96	91	98	93	88	91	86	83	68
ROOM INDEX	UF(total)									Direct
According to DIN EN 13032-2 2004			Suspended				SHRNOM = 1.25			

C Range: 0 - 360DEG
 C Interval: 22.5DEG
 Test Speed: HIGH
 Temperature:25.3DEG
 Operators:chen
 Test Date:2022-10-04

Range: 0 - 180DEG
 Interval: 1.0DEG
 Test System:EVERFINE GO-3000H_V1 SYSTEM V2.00.411
 Humidity:65.0%
 Test Distance:8.650m [K=1.0000]
 Remarks:

ISOCANDELA DIAGRAM

Test:U:120.03V I:0.3164A P:37.525W PF:0.9881 Freq:60.00Hz Lamp Flux:3229.75x1 lm		
NAME: ASD Lighting Corp	TYPE:ASD-LFC-GX-20D42S-RGB-SMARTLIGHT:	
SPEC.:ASD-LFC-GX-20D42S-RGB-SMART-5000K	DIM.:	SERIAL No.:
MFR.: ASD Lighting Corp	SUR.: -0.47	Shielding Angle:

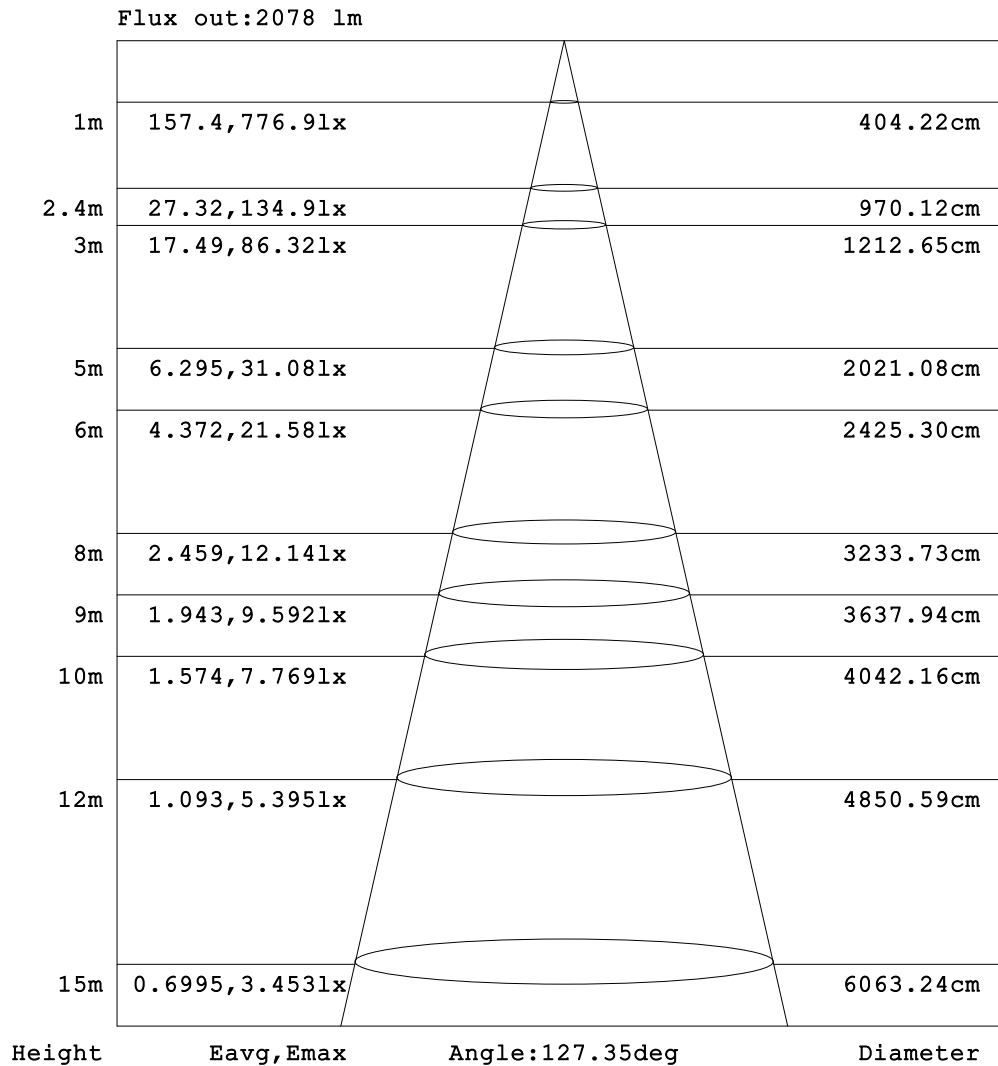


C Range: 0 - 360DEG
 C Interval: 22.5DEG
 Test Speed: HIGH
 Temperature:25.3DEG
 Operators:chen
 Test Date:2022-10-04

Range: 0 - 180DEG
 Interval: 1.0DEG
 Test System:EVERFINE GO-3000H_V1 SYSTEM V2.00.411
 Humidity:65.0%
 Test Distance:8.650m [K=1.0000]
 Remarks:

AAI Figure

Test:U:120.03V I:0.3164A P:37.525W PF:0.9881 Freq:60.00Hz Lamp Flux:3229.75x1 lm		
NAME: ASD Lighting Corp	TYPE:ASD-LFC-GX-20D42S-RGB-SMARTLIGHT:	
SPEC.:ASD-LFC-GX-20D42S-RGB-SMART-5000K	DIM.:	SERIAL No.:
MFR.: ASD Lighting Corp	SUR.: -0.47	Shielding Angle:



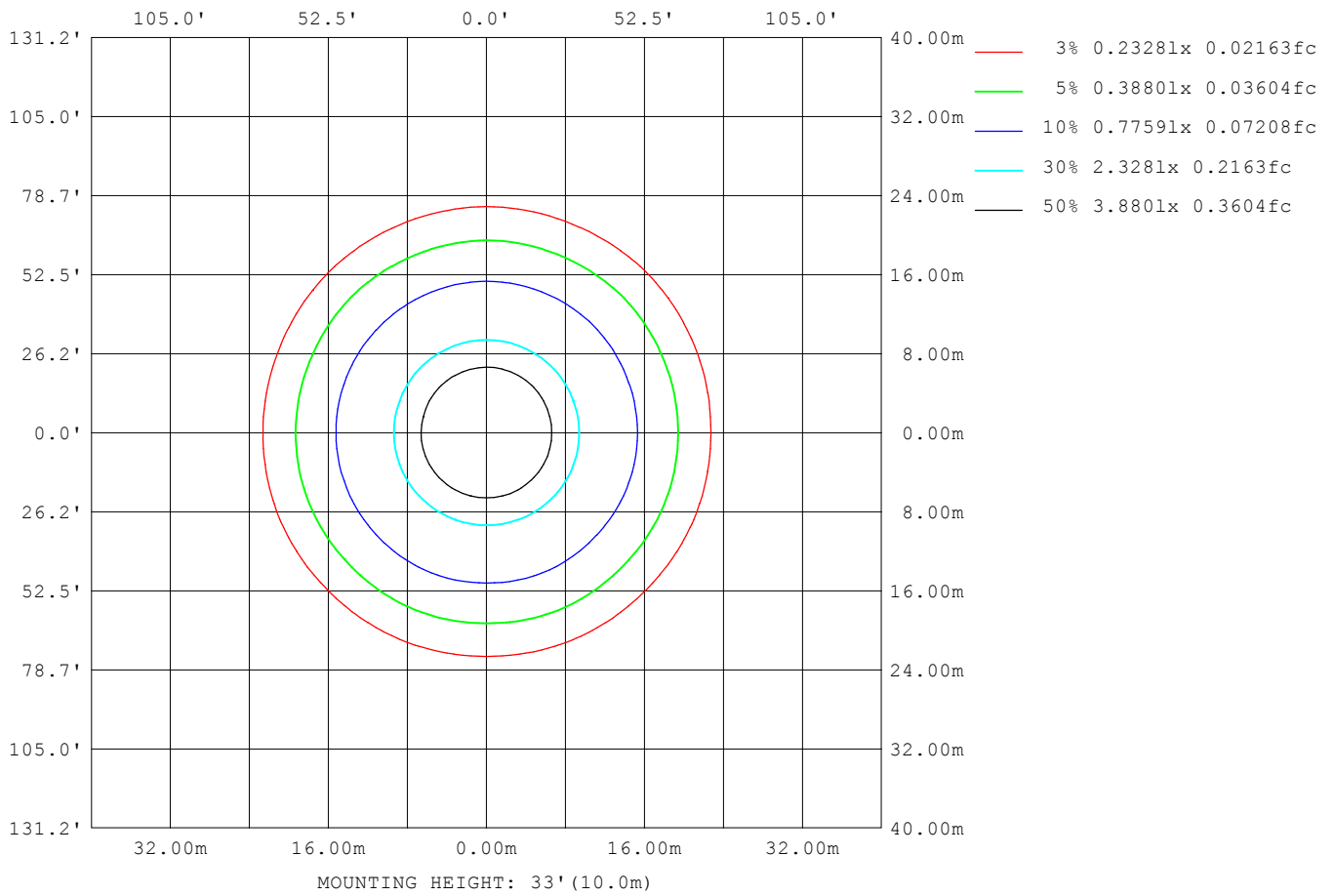
Note:The Curves indicate the illuminated area and the average illumination when the luminaire is at different distance.

C Range: 0 - 360DEG
 C Interval: 22.5DEG
 Test Speed: HIGH
 Temperature:25.3DEG
 Operators:chen
 Test Date:2022-10-04

Range: 0 - 180DEG
 Interval: 1.0DEG
 Test System:EVERFINE GO-3000H_V1 SYSTEM V2.00.411
 Humidity:65.0%
 Test Distance:8.650m [K=1.0000]
 Remarks:

ISOLUX DIAGRAM

Test:U:120.03V I:0.3164A P:37.525W PF:0.9881 Freq:60.00Hz Lamp Flux:3229.75x1 lm		
NAME: ASD Lighting Corp	TYPE:ASD-LFC-GX-20D42S-RGB-SMARTIGHT:	
SPEC.:ASD-LFC-GX-20D42S-RGB-SMART-5000K	DIM.:	SERIAL No.:
MFR.: ASD Lighting Corp	SUR.: -0.47	Shielding Angle:



C Range: 0 - 360DEG
 C Interval: 22.5DEG
 Test Speed: HIGH
 Temperature:25.3DEG
 Operators:chen
 Test Date:2022-10-04

Range: 0 - 180DEG
 Interval: 1.0DEG
 Test System:EVERFINE GO-3000H_V1 SYSTEM V2.00.411
 Humidity:65.0%
 Test Distance:8.650m [K=1.0000]
 Remarks:

LED Avg.L Report

Test:U:120.03V I:0.3164A P:37.525W PF:0.9881 Freq:60.00Hz Lamp Flux:3229.75x1 lm		
NAME: ASD Lighting Corp	TYPE:ASD-LFC-GX-20D42S-RGB-SMARTIGHT:	
SPEC.:ASD-LFC-GX-20D42S-RGB-SMART-5000K	DIM.:	SERIAL No.:
MFR.: ASD Lighting Corp	SUR.: -0.47	Shielding Angle:

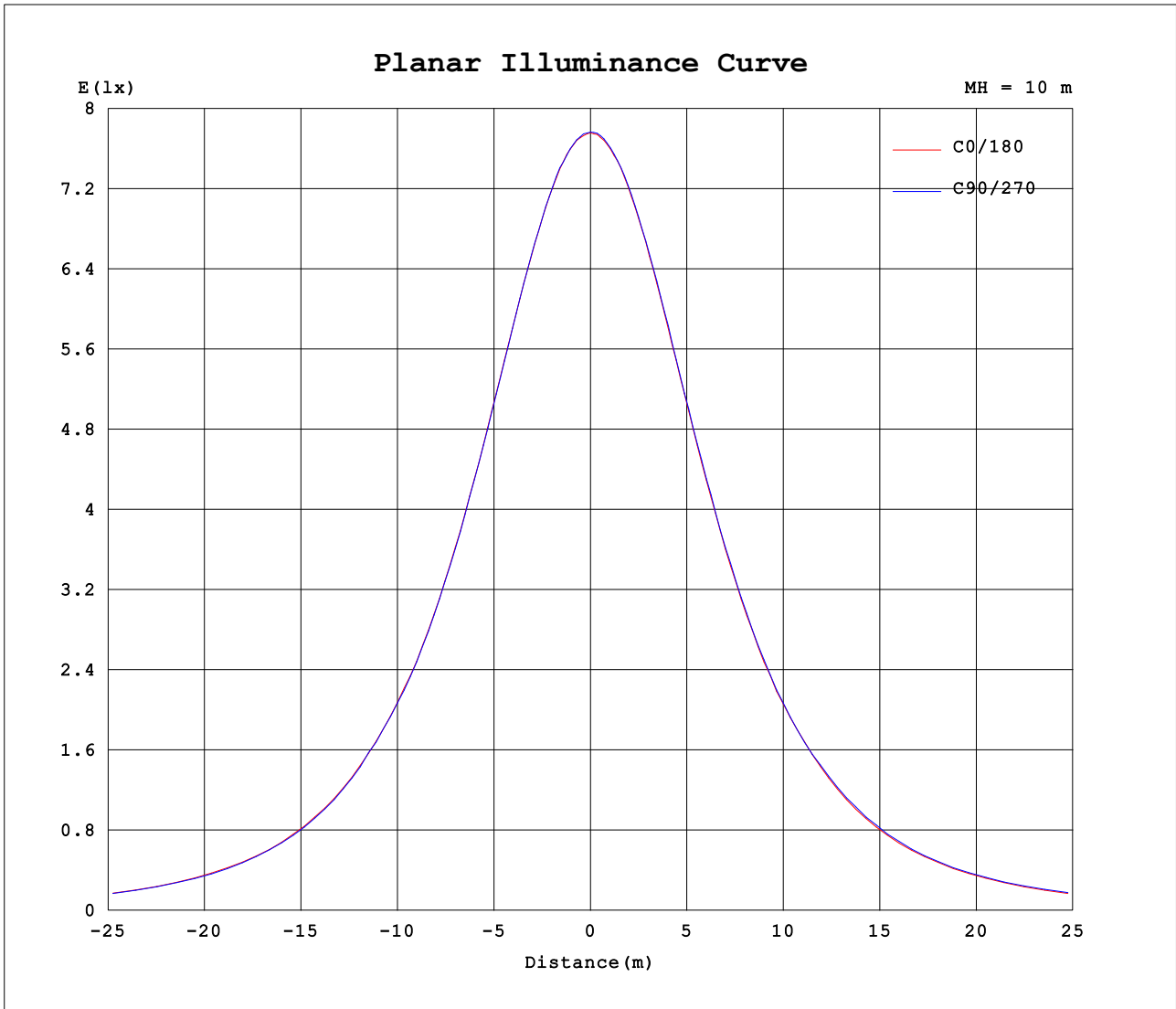
AvgL	cd/m2
L_0~180 (65) av	5057
L_0~180 (75) av	5371
L_0~180 (85) av	9031
L_90~270 (65) av	5112
L_90~270 (75) av	5391
L_90~270 (85) av	9061
L_45 (65) av	5094
L_45 (75) av	5428
L_45 (85) av	9102

Standard: GB/T 29293-2012

C Range: 0 - 360DEG
 C Interval: 22.5DEG
 Test Speed: HIGH
 Temperature:25.3DEG
 Operators:chen
 Test Date:2022-10-04

Range: 0 - 180DEG
 Interval: 1.0DEG
 Test System:EVERFINE GO-3000H_V1 SYSTEM V2.00.411
 Humidity:65.0%
 Test Distance:8.650m [K=1.0000]
 Remarks:

Planar Illuminance Curve



C Range: 0 - 360DEG
 C Interval: 22.5DEG
 Test Speed: HIGH
 Temperature:25.3DEG
 Operators:chen
 Test Date:2022-10-04

Range: 0 - 180DEG
 Interval: 1.0DEG
 Test System:EVERFINE GO-3000H_V1 SYSTEM V2.00.411
 Humidity:65.0%
 Test Distance:8.650m [K=1.0000]
 Remarks:

LUMINOUS DISTRIBUTION INTENSITY DATA

Test:U:120.03V I:0.3164A P:37.525W PF:0.9881 Freq:60.00Hz Lamp Flux:3229.75x1 lm		
NAME: ASD Lighting Corp	TYPE:ASD-LFC-GX-20D42S-RGB-SMARTIGHT:	
SPEC.:ASD-LFC-GX-20D42S-RGB-SMART-5000K	DIM.:	SERIAL No.:
MFR.: ASD Lighting Corp	SUR.: -0.47	Shielding Angle:

Table--1

UNIT: cd

C (DEG) □ (DEG)	0	22.5	45	67.5	90	112.5	135	157.5	180	202.5	225	247.5	270	292.5	315	337.5			
0	776	776	776	777	776	777	777	776	776	776	776	777	776	777	777	776			
5	773	774	773	774	773	774	774	774	773	773	774	774	774	775	775	774			
10	765	766	765	766	767	767	766	767	766	766	767	767	768	767	768	767			
15	753	754	755	754	753	754	753	754	754	753	754	755	755	755	755	754			
20	736	737	736	737	737	737	736	737	736	735	737	736	738	738	739	737			
25	715	716	716	717	714	716	714	716	714	714	716	715	716	717	719	718			
30	689	692	689	690	689	689	688	688	688	687	689	688	692	690	694	690			
35	660	660	658	658	657	657	658	657	656	657	658	656	659	658	660	659			
40	622	625	622	623	620	620	620	624	622	620	622	622	624	622	626	624			
45	587	594	587	588	586	585	583	584	583	580	582	582	585	583	588	590			
50	546	548	549	545	541	543	540	544	541	541	544	542	546	548	547	546			
55	494	494	490	490	487	489	486	488	486	486	489	492	495	493	496	491			
60	434	437	431	438	431	431	431	432	430	428	436	432	438	436	440	437			
65	373	375	369	372	371	369	372	370	368	370	372	376	379	377	381	377			
70	312	309	307	308	309	301	303	301	302	302	304	308	312	318	309	309			
75	245	248	247	241	240	240	238	240	237	240	241	240	244	246	248	248			
80	186	191	186	187	181	181	181	179	178	181	180	180	181	185	187	188			
85	141	142	139	139	136	137	134	134	132	132	135	135	138	139	142	141			
90	118	119	117	116	114	114	112	112	110	110	111	112	114	115	117	117			
95	106	107	105	104	103	102	101	102	100	99.8	100	101	102	103	104	105			
100	102	102	100	99.7	99.9	98.3	97.2	97.8	97.6	95.8	97.0	98.6	101	101	101	100			
105	102	101	98.6	98.3	98.3	96.4	95.1	97.2	96.8	94.5	93.6	96.4	98.7	98.7	97.3	98.5			
110	104	102	96.3	97.5	98.5	95.4	93.4	98.4	98.9	97.1	91.4	93.0	97.0	97.0	95.1	101			
115	96.4	97.4	92.5	93.9	95.2	90.0	90.8	94.3	92.4	93.2	90.5	90.7	95.0	95.0	92.2	97.7			
120	92.2	90.7	88.8	89.8	91.1	86.3	87.9	89.1	88.7	88.3	88.0	88.1	93.0	91.1	89.3	91.7			
125	90.3	86.4	85.2	84.3	86.4	83.1	84.4	85.9	87.4	85.2	85.6	85.7	89.3	86.9	86.9	87.2			
130	87.6	82.8	79.7	79.2	81.3	79.5	80.5	83.1	85.6	82.5	82.1	82.1	85.2	82.8	82.0	83.3			
135	83.6	78.0	72.9	74.6	77.2	74.0	74.9	79.3	82.5	78.8	76.4	78.0	80.8	79.2	75.1	79.1			
140	78.4	73.2	66.8	66.0	72.1	65.7	69.0	74.9	78.2	75.0	70.1	70.0	76.5	72.5	68.3	74.2			
145	71.9	67.6	60.9	61.5	66.5	61.6	62.9	69.7	72.6	69.4	63.6	63.3	70.6	64.9	62.8	68.2			
150	63.4	59.8	53.8	55.5	59.7	55.3	56.1	62.4	65.3	62.8	57.3	58.1	63.8	59.2	55.9	60.4			
155	55.3	52.9	48.8	50.6	53.0	50.5	51.2	55.0	57.8	56.4	52.0	53.7	57.6	54.5	51.9	54.0			
160	48.1	47.1	45.1	45.7	46.8	45.5	46.6	49.3	49.7	50.0	48.1	49.6	51.4	48.8	47.5	48.5			
165	42.2	42.6	41.5	41.4	42.1	42.2	42.3	43.4	43.8	44.0	44.8	45.0	45.4	43.7	43.1	44.1			
170	38.9	39.4	39.5	38.7	40.1	39.7	39.1	39.2	39.5	39.8	41.4	42.3	41.8	40.4	40.7	40.6			
175	39.1	38.5	36.8	37.0	39.1	38.9	37.9	38.4	39.5	37.4	37.5	39.6	40.7	39.6	39.2	39.6			
180	40.1	38.2	37.5	37.9	40.0	38.9	39.1	39.3	40.1	38.2	37.5	37.9	39.9	38.9	39.1	39.3			

C Range: 0 - 360DEG
 C Interval: 22.5DEG
 Test Speed: HIGH
 Temperature:25.3DEG
 Operators:chen
 Test Date:2022-10-04

□ Range: 0 - 180DEG
 □ Interval: 1.0DEG
 Test System:EVERFINE GO-3000H_V1 SYSTEM V2.00.411
 Humidity:65.0%
 Test Distance:8.650m [K=1.0000]
 Remarks: