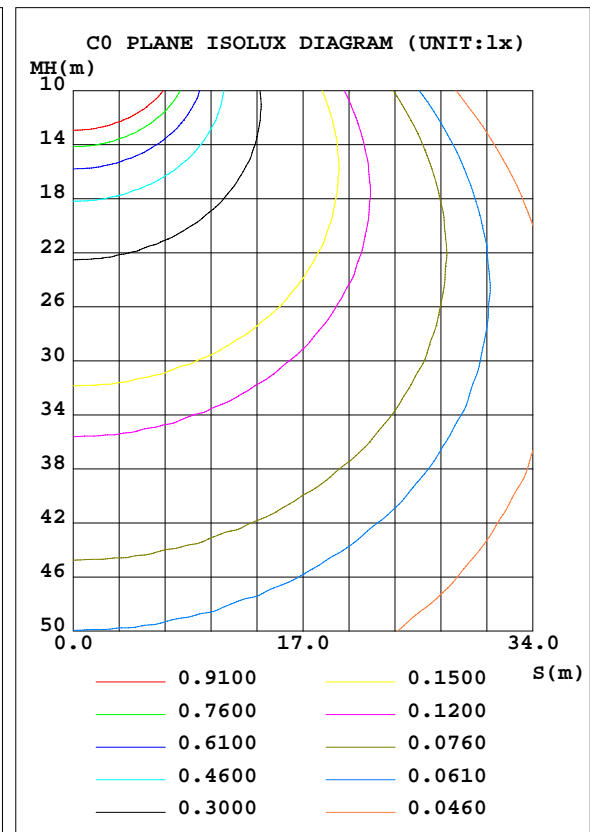
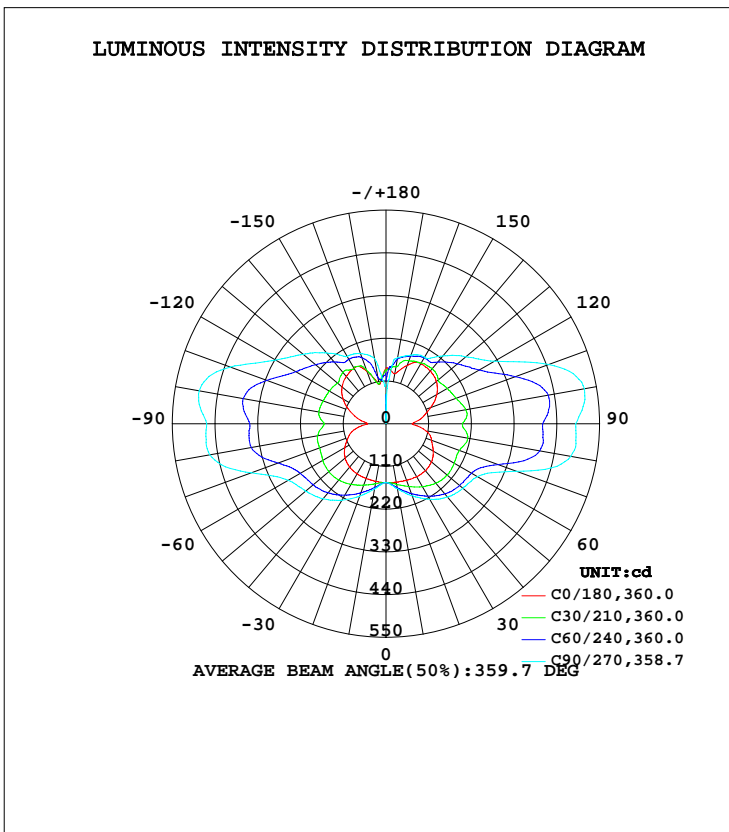


LUMINAIRE PHOTOMETRIC TEST REPORT

Test:U:277.00V I:0.1460A P:31.990W PF:0.7910 Freq:60.00Hz Lamp Flux:2933.82x1 lm		
NAME:	TYPE:LED	WEIGHT:
SPEC.:	DIM.:	SERIAL No.:
MFR.: ASD Lighting corp	SUR.:	Shielding Angle:

DATA OF LAMP		PHOTOMETRIC DATA Eff: 91.71 lm/W			
MODEL	SD-LWS27-MV-48D36CC-BK	I _{max} (cd)	519.1	S/MH(C0/180)	1.49
NOMINAL POWER(W)	36	LOR(%)	100.0	S/MH(C90/270)	2.30
RATED VOLTAGE(V)	120-277	TOTAL FLUX(lm)	2933.8	η UP, DN(C0-180)	25.4,24.9
NOMINAL FLUX(lm)	2933.82	CIE CLASS	DIFFUSE	η UP, DN(C180-360)	24.9,24.8
LAMPS INSIDE	1	η up(%)	50.3	CIBSE SHR NOM	2.00
TEST VOLTAGE(V)	277	η down(%)	49.7	CIBSE SHR MAX	2.00



C Range: 0 - 360DEG
 C Interval: 15.0DEG
 Test Speed: HIGH
 Temperature: 25.0DEG
 Operators: Alan Wang
 Test Date: 08 May 2023

γ Range: 0 - 180DEG
 γ Interval: 1.0DEG
 Test System: EVERFINE GO-R5000_V2 SYSTEM V2.00.416
 Humidity: 43.5%
 Test Distance: 2.500m [K=1.0390]
 Remarks:

ZONAL FLUX DIAGRAM

ZONAL FLUX DIAGRAM:

γ	C0	C45	C90	C135	C180	C225	C270	C315	γ	Φ zone	Φ total	%lum,lamp
10	153.0	163.3	169.8	162.2	150.7	162.6	170.4	163.3	0- 10	15.01	15.01	0.51,0.51
20	155.4	182.7	197.2	178.3	150.2	179.8	198.3	183.0	10- 20	48.41	63.42	2.16,2.16
30	157.9	203.2	224.7	196.1	149.1	198.3	227.4	203.5	20- 30	86.90	150.3	5.12,5.12
40	157.9	220.8	246.4	208.9	145.8	213.3	252.4	222.7	30- 40	127.9	278.2	9.48,9.48
50	152.7	230.5	258.7	215.1	137.6	221.4	270.1	234.6	40- 50	165.9	444.1	15.1,15.1
60	140.5	231.7	272.5	213.7	122.6	223.2	291.1	240.1	50- 60	195.7	639.8	21.8,21.8
70	125.1	252.9	358.6	226.6	103.9	236.1	369.8	256.4	60- 70	226.6	866.3	29.5,29.5
80	104.4	306.4	483.2	273.8	80.97	261.1	460.6	291.6	70- 80	285.0	1151	39.2,39.2
90	67.54	301.2	488.6	272.9	47.33	251.8	461.6	285.4	80- 90	307.7	1459	49.7,49.7
100	95.78	315.7	519.1	291.3	72.00	270.6	488.2	303.1	90-100	314.9	1774	60.5,60.5
110	122.2	269.5	445.9	256.1	100.2	245.1	426.8	272.9	100-110	302.1	2076	70.8,70.8
120	151.4	230.3	322.7	218.1	127.8	218.6	328.3	244.5	110-120	243.7	2320	79.1,79.1
130	169.2	208.8	268.5	198.0	148.0	200.9	278.5	223.0	120-130	196.1	2516	85.8,85.8
140	177.3	191.4	228.2	181.9	159.0	181.4	238.6	199.5	130-140	157.2	2673	91.1,91.1
150	179.0	190.2	198.4	182.4	165.3	184.4	200.4	197.9	140-150	118.7	2792	95.2,95.2
160	159.8	180.9	188.4	174.2	143.6	168.9	192.7	189.5	150-160	83.62	2875	98,98
170	131.0	159.9	172.6	121.6	103.2	110.7	169.9	171.6	160-170	45.55	2921	99.6,99.6
180	143.8	141.7	51.71	132.1	142.1	135.8	102.8	129.3	170-180	12.83	2934	100,100
DEG	LUMINOUS INTENSITY:cd									UNIT:lm		

Conical surface Flux(90deg): 356.85 lm

%lum = 12.2%

%lamp = 12.2%

Conical surface Flux(120deg): 639.75 lm

%lum = 21.8%

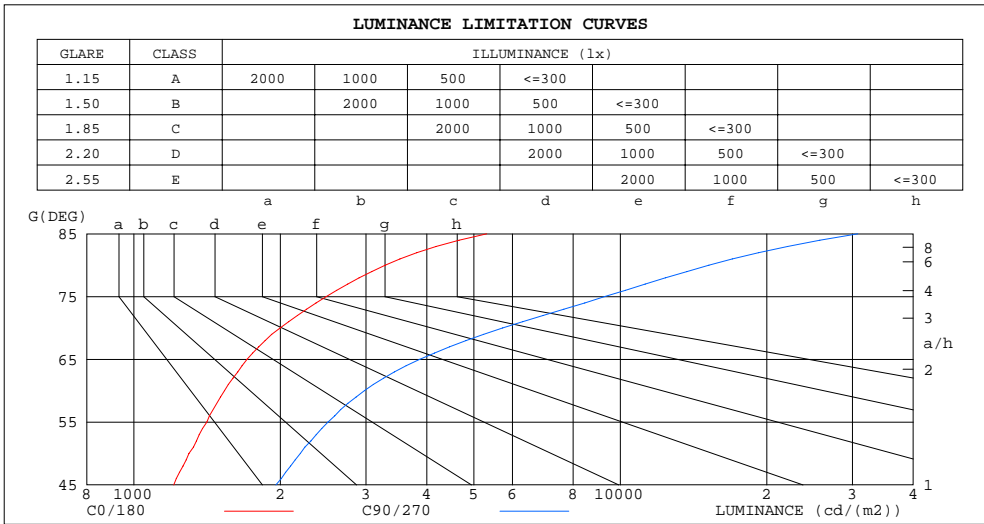
%lamp = 21.8%

C Range: 0 - 360DEG
 C Interval: 15.0DEG
 Test Speed: HIGH
 Temperature: 25.0DEG
 Operators: Alan Wang
 Test Date: 08 May 2023

γ Range: 0 - 180DEG
 γ Interval: 1.0DEG
 Test System: EVERFINE GO-R5000_V2 SYSTEM V2.00.416
 Humidity: 43.5%
 Test Distance: 2.500m [K=1.0390]
 Remarks:

LUMINANCE LIMITATION CURVES

Test:U:277.00V I:0.1460A P:31.990W PF:0.7910 Freq:60.00Hz Lamp Flux:2933.82x1 lm		
NAME:	TYPE:LED	WEIGHT:
SPEC.:	DIM.:	SERIAL No.:
MFR.: ASD Lighting corp	SUR.:	Shielding Angle:



LUMINANCE cd/(m2)		
G(DEG)	C0/180	C90/270
85	5314	30754
80	3286	15205
75	2487	9285
70	1998	5730
65	1709	3869
60	1535	2978
55	1412	2507
50	1298	2200
45	1207	1958

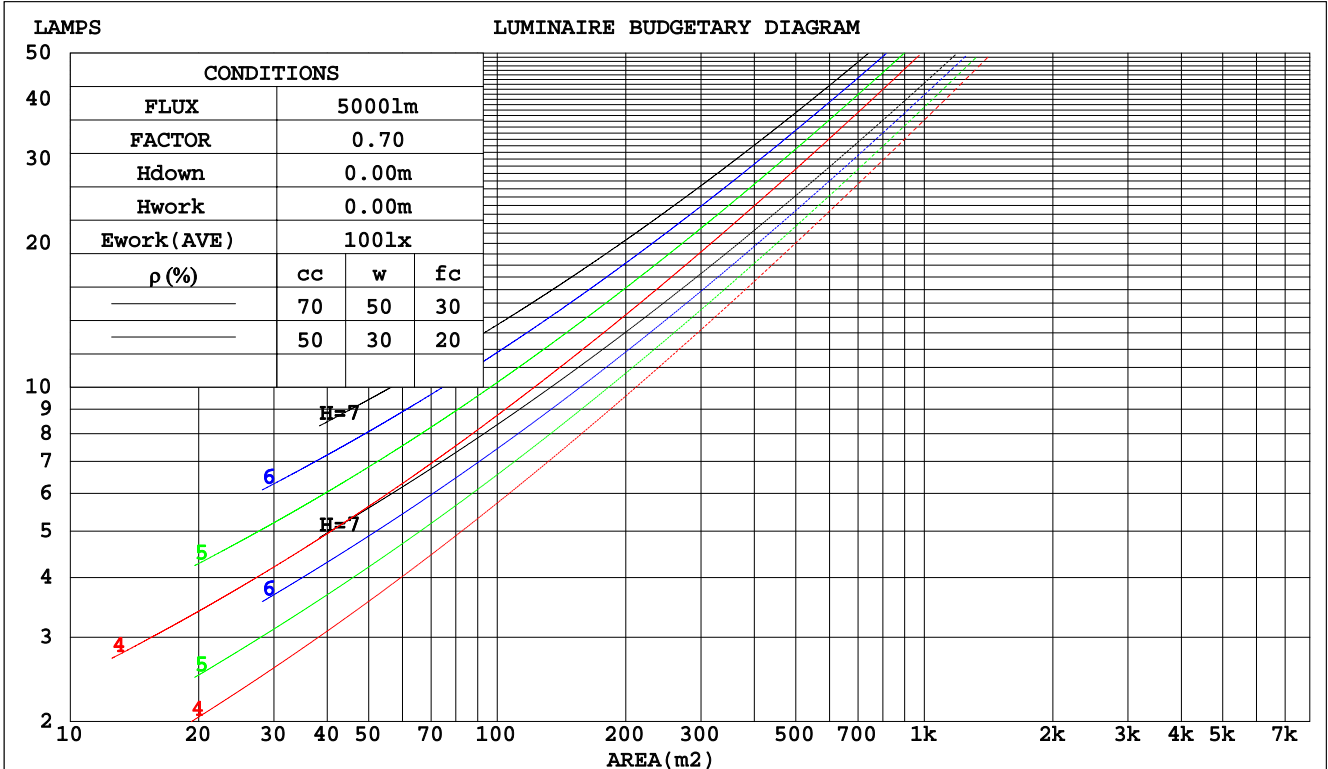
C Range: 0 - 360DEG
 C Interval: 15.0DEG
 Test Speed: HIGH
 Temperature: 25.0DEG
 Operators: Alan Wang
 Test Date: 08 May 2023

γ Range: 0 - 180DEG
 γ Interval: 1.0DEG
 Test System: EVERFINE GO-R5000_V2 SYSTEM V2.00.416
 Humidity: 43.5%
 Test Distance: 2.500m [K=1.0390]
 Remarks:

CU AND LUMINAIRE BUDGETARY ESTIMATE DIAGRAM

Test:U:277.00V I:0.1460A P:31.990W PF:0.7910 Freq:60.00Hz Lamp Flux:2933.82x1 lm		
NAME:	TYPE:LED	WEIGHT:
SPEC.:	DIM.:	SERIAL No.:
MFR.: ASD Lighting corp	SUR.:	Shielding Angle:

pcc	80%			70%			50%			30%			10%			0
	50%	30%	10%	50%	30%	10%	50%	30%	10%	50%	30%	10%	50%	30%	10%	0
pw																0
pfc	20%			20%			20%			20%			20%			0
RCR	RCR:Room Cavity Ratio						Coefficients of Utilization(CU)									
0.0	1.07	1.07	1.07	.99	.99	.99	.83	.83	.83	.69	.69	.69	.56	.56	.56	.50
1.0	.86	.80	.75	.79	.74	.69	.65	.61	.58	.53	.50	.47	.41	.39	.37	.31
2.0	.73	.64	.57	.66	.59	.53	.55	.49	.44	.44	.39	.36	.34	.30	.28	.23
3.0	.62	.53	.46	.57	.49	.42	.47	.40	.35	.37	.32	.28	.28	.25	.22	.17
4.0	.54	.45	.38	.50	.41	.35	.41	.34	.29	.32	.27	.23	.25	.21	.18	.14
5.0	.48	.38	.31	.44	.35	.29	.36	.29	.24	.29	.23	.19	.22	.18	.15	.11
6.0	.42	.33	.27	.39	.31	.25	.32	.25	.20	.26	.20	.16	.20	.16	.12	.09
7.0	.38	.29	.23	.35	.27	.21	.29	.22	.18	.23	.18	.14	.18	.14	.11	.08
8.0	.34	.26	.20	.31	.24	.18	.26	.20	.15	.21	.16	.12	.16	.12	.09	.07
9.0	.31	.23	.17	.29	.21	.16	.24	.18	.13	.19	.14	.11	.15	.11	.08	.06
10.0	.28	.21	.15	.26	.19	.14	.22	.16	.12	.18	.13	.10	.14	.10	.07	.05



C Range: 0 - 360DEG
 C Interval: 15.0DEG
 Test Speed: HIGH
 Temperature: 25.0DEG
 Operators: Alan Wang
 Test Date: 08 May 2023

γ Range: 0 - 180DEG
 γ Interval: 1.0DEG
 Test System: EVERFINE GO-R5000_V2 SYSTEM V2.00.416
 Humidity: 43.5%
 Test Distance: 2.500m [K=1.0390]
 Remarks:

WEC AND CCEC

Test:U:277.00V I:0.1460A P:31.990W PF:0.7910 Freq:60.00Hz Lamp Flux:2933.82x1 lm		
NAME:	TYPE:LED	WEIGHT:
SPEC.:	DIM.:	SERIAL No.:
MFR.: ASD Lighting corp	SUR.:	Shielding Angle:

ρcc	80%			70%			50%			30%			10%			0
ρw	50%	30%	10%	50%	30%	10%	50%	30%	10%	50%	30%	10%	50%	30%	10%	0
ρfc	20%			20%			20%			20%			20%			0
RCR	RCR:Room Cavity Ratio						Wall Exitance Coefficients(WEC)									
0.0																
1.0	.420	.239	.076	.398	.227	.072	.355	.204	.065	.317	.183	.059	.281	.163	.052	
2.0	.347	.190	.058	.327	.180	.055	.288	.160	.050	.252	.142	.044	.219	.124	.039	
3.0	.301	.160	.048	.282	.151	.046	.247	.134	.041	.214	.117	.036	.184	.102	.032	
4.0	.267	.139	.041	.250	.131	.039	.218	.115	.034	.187	.101	.030	.159	.087	.026	
5.0	.240	.123	.035	.225	.115	.034	.195	.101	.030	.167	.088	.026	.141	.075	.023	
6.0	.219	.110	.031	.204	.103	.030	.177	.091	.026	.151	.079	.023	.127	.067	.020	
7.0	.201	.099	.028	.187	.093	.027	.162	.082	.024	.138	.071	.021	.116	.060	.018	
8.0	.186	.091	.025	.173	.085	.024	.150	.075	.021	.127	.065	.019	.106	.055	.016	
9.0	.172	.083	.023	.161	.078	.022	.139	.069	.019	.118	.059	.017	.099	.050	.014	
10.0	.161	.077	.021	.150	.073	.020	.130	.064	.018	.110	.055	.016	.092	.046	.013	

ρcc	80%			70%			50%			30%			10%			0
ρw	50%	30%	10%	50%	30%	10%	50%	30%	10%	50%	30%	10%	50%	30%	10%	0
ρfc	20%			20%			20%			20%			20%			0
RCR	RCR:Room Cavity Ratio						Ceiling Cavity Exitance Coefficients(CCEC)									
0.0	.573	.573	.573	.490	.490	.490	.335	.335	.335	.192	.192	.192	.061	.061	.061	
1.0	.574	.541	.512	.491	.465	.440	.336	.320	.305	.193	.185	.177	.062	.060	.057	
2.0	.568	.520	.480	.487	.448	.415	.334	.310	.289	.192	.180	.170	.062	.058	.055	
3.0	.561	.505	.461	.481	.436	.399	.330	.303	.280	.191	.177	.165	.061	.057	.054	
4.0	.554	.494	.448	.475	.427	.389	.327	.297	.274	.189	.174	.162	.061	.057	.053	
5.0	.546	.485	.440	.469	.420	.382	.323	.293	.270	.187	.172	.160	.060	.056	.053	
6.0	.539	.478	.434	.463	.414	.378	.320	.290	.267	.185	.170	.159	.060	.056	.052	
7.0	.532	.472	.429	.458	.409	.374	.316	.287	.265	.184	.169	.158	.059	.055	.052	
8.0	.526	.466	.426	.453	.405	.371	.313	.284	.263	.182	.168	.157	.059	.055	.052	
9.0	.520	.462	.423	.448	.401	.369	.310	.282	.262	.181	.166	.156	.059	.055	.052	
10.0	.514	.458	.421	.443	.398	.367	.307	.280	.261	.179	.165	.156	.058	.054	.052	

C Range: 0 - 360DEG
 C Interval: 15.0DEG
 Test Speed: HIGH
 Temperature: 25.0DEG
 Operators: Alan Wang
 Test Date: 08 May 2023

γ Range: 0 - 180DEG
 γ Interval: 1.0DEG
 Test System: EVERFINE GO-R5000_V2 SYSTEM V2.00.416
 Humidity: 43.5%
 Test Distance: 2.500m [K=1.0390]
 Remarks:

UGR(Unified Glare Rating) Table

Test:U:277.00V I:0.1460A P:31.990W PF:0.7910 Freq:60.00Hz Lamp Flux:2933.82x1 lm										
NAME:					TYPE:LED			WEIGHT:		
SPEC.:					DIM.:			SERIAL No.:		
MFR.: ASD Lighting corp					SUR.:			Shielding Angle:		
ceiling/cavity	0.7	0.7	0.5	0.5	0.3	0.7	0.7	0.5	0.5	0.3
walls	0.5	0.3	0.5	0.3	0.3	0.5	0.3	0.5	0.3	0.3
working plane	0.2	0.2	0.2	0.2	0.2	0.2	0.2	0.2	0.2	0.2
Room dimensions	Viewed crosswise					Viewed endwise				
x = 2H y = 2H	10.5	11.6	11.4	12.5	13.7	13.2	14.3	14.0	15.2	16.3
3H	13.0	14.0	13.9	14.9	16.1	17.5	18.5	18.4	19.4	20.6
4H	14.4	15.3	15.3	16.2	17.5	20.4	21.3	21.3	22.2	23.4
6H	15.8	16.7	16.7	17.6	18.9	23.3	24.2	24.2	25.1	26.4
8H	16.5	17.4	17.4	18.3	19.5	24.8	25.6	25.7	26.6	27.8
12H	17.2	18.1	18.2	19.0	20.3	26.4	27.2	27.3	28.1	29.4
4H 2H	12.2	13.2	13.1	14.1	15.3	13.9	14.9	14.8	15.8	17.0
3H	14.9	15.8	15.9	16.7	18.0	18.5	19.3	19.4	20.2	21.5
4H	16.5	17.2	17.4	18.2	19.5	21.5	22.2	22.4	23.2	24.5
6H	18.0	18.7	19.0	19.6	20.9	24.6	25.3	25.6	26.3	27.6
8H	18.7	19.4	19.7	20.4	21.7	26.2	26.8	27.2	27.8	29.2
12H	19.5	20.1	20.5	21.1	22.4	27.9	28.5	28.9	29.5	30.8
8H 4H	18.4	19.0	19.4	20.0	21.3	21.9	22.6	22.9	23.6	24.9
6H	20.2	20.7	21.2	21.8	23.1	25.4	25.9	26.4	26.9	28.3
8H	21.1	21.6	22.1	22.6	23.9	27.2	27.7	28.2	28.7	30.0
12H	21.9	22.4	23.0	23.4	24.8	29.1	29.6	30.2	30.6	32.0
12H 4H	19.2	19.8	20.2	20.8	22.1	22.0	22.6	23.0	23.6	24.9
6H	21.2	21.7	22.2	22.7	24.1	25.5	26.0	26.5	27.0	28.4
8H	22.3	22.7	23.3	23.7	25.1	27.4	27.9	28.5	28.9	30.3
Variations with the observer position at spacings:										
S = 1.0H	+ 0.1 / - 0.1					+ 0.1 / - 0.1				
1.5H	+ 0.2 / - 0.2					+ 0.3 / - 0.3				
2.0H	+ 0.3 / - 0.4					+ 0.3 / - 0.4				

CIE Pub.117, 2934 lm Total Lamp Luminous Flux Corrected (8log(F/F0) = 3.7)
 Area: 0.183 m2

C Range: 0 - 360DEG
 C Interval: 15.0DEG
 Test Speed: HIGH
 Temperature: 25.0DEG
 Operators: Alan Wang
 Test Date: 08 May 2023

γ Range: 0 - 180DEG
 γ Interval: 1.0DEG
 Test System: EVERFINE GO-R5000_V2 SYSTEM V2.00.416
 Humidity: 43.5%
 Test Distance: 2.500m [K=1.0390]
 Remarks:

UTILIZATION FACTORS TABLE

Test:U:277.00V I:0.1460A P:31.990W PF:0.7910 Freq:60.00Hz Lamp Flux:2933.82x1 lm		
NAME:	TYPE:LED	WEIGHT:
SPEC.:	DIM.:	SERIAL No.:
MFR.: ASD Lighting corp	SUR.:	Shielding Angle:

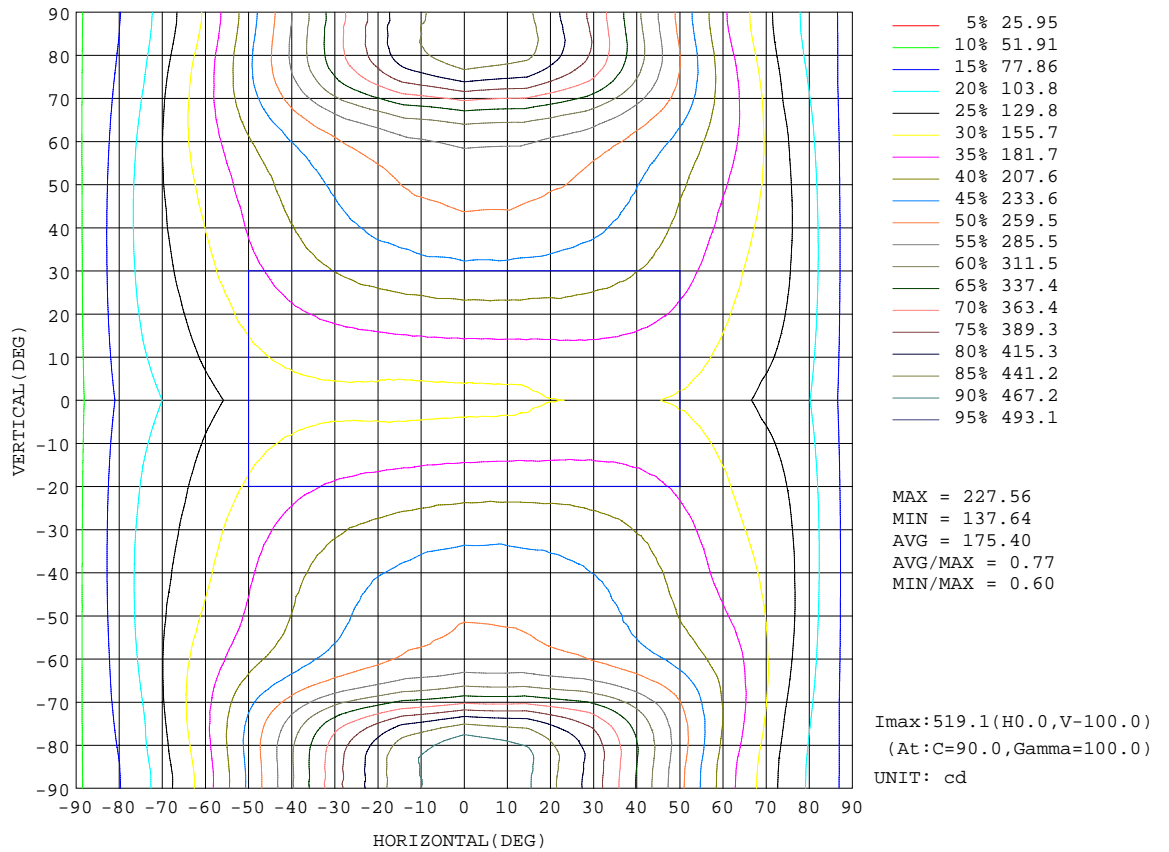
REFLECTANCE										
Ceiling	0.8	0.8	0.8	0.7	0.7	0.7	0.5	0.5	0.5	0
Walls	0.7	0.5	0.3	0.7	0.5	0.3	0.7	0.5	0.3	0
Working plane	0.2	0.2	0.2	0.2	0.2	0.2	0.2	0.2	0.2	0
ROOM INDEX	UTILIZATION FACTORS(PERCENT) $k(RI) \times RCR = 5$									
k = 0.60	36	23	16	34	22	15	30	20	14	7
0.80	44	30	22	41	29	21	36	26	19	9
1.00	51	37	28	48	35	26	41	33	24	12
1.25	58	44	34	54	41	32	46	36	28	15
1.50	63	49	39	58	46	37	50	40	32	17
2.00	71	58	48	65	54	45	56	46	39	21
2.50	76	64	54	70	59	51	59	51	44	24
3.00	80	69	60	74	64	56	62	54	48	26
4.00	85	75	67	78	70	63	66	59	54	30
5.00	89	80	73	82	74	67	69	63	58	32
ROOM INDEX	UF(total)									Direct
According to DIN EN 13032-2 2004			Suspended				SHRNOM = 1.25			

C Range: 0 - 360DEG
 C Interval: 15.0DEG
 Test Speed: HIGH
 Temperature: 25.0DEG
 Operators: Alan Wang
 Test Date: 08 May 2023

γ Range: 0 - 180DEG
 γ Interval: 1.0DEG
 Test System: EVERFINE GO-R5000_V2 SYSTEM V2.00.416
 Humidity: 43.5%
 Test Distance: 2.500m [K=1.0390]
 Remarks:

ISOCANDELA DIAGRAM

Test:U:277.00V I:0.1460A P:31.990W PF:0.7910 Freq:60.00Hz Lamp Flux:2933.82x1 lm		
NAME:	TYPE:LED	WEIGHT:
SPEC.:	DIM.:	SERIAL No.:
MFR.: ASD Lighting corp	SUR.:	Shielding Angle:

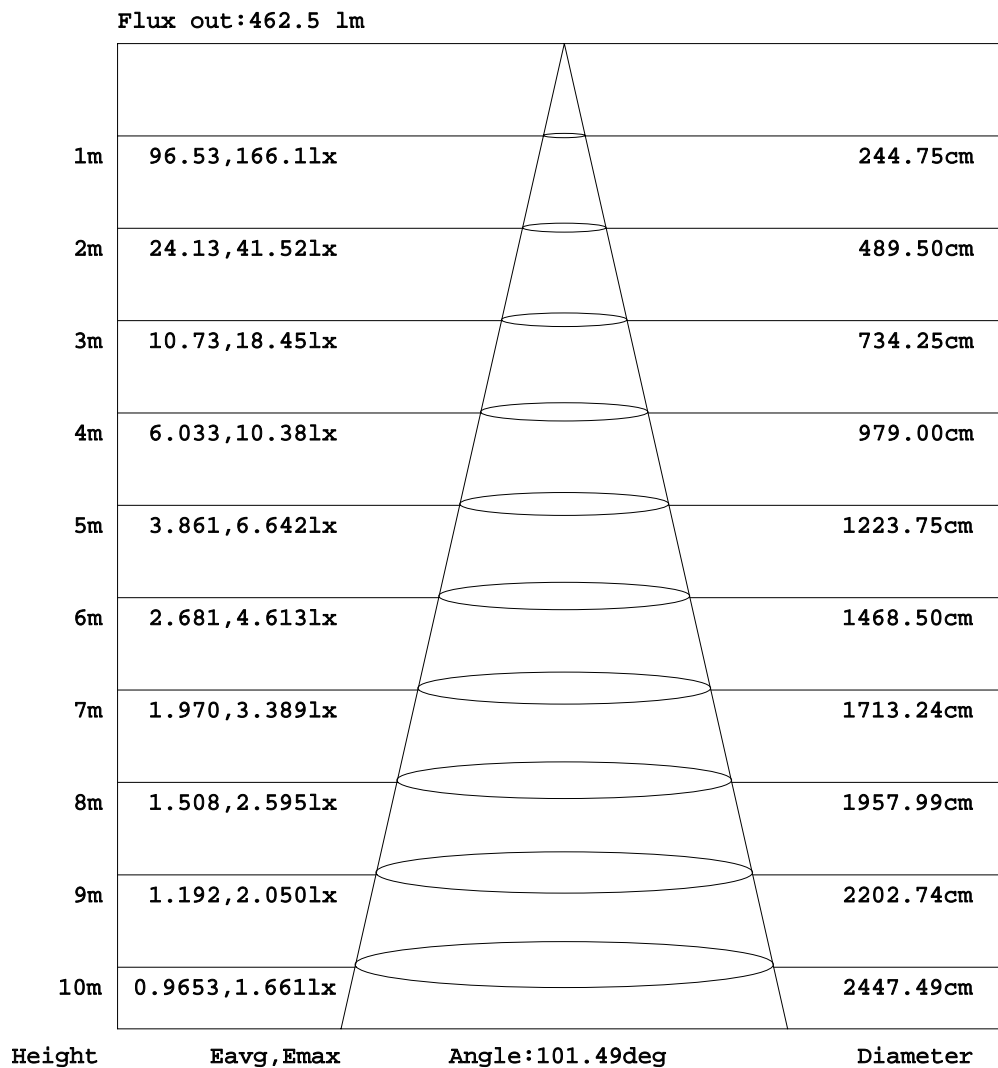


C Range: 0 - 360DEG
 C Interval: 15.0DEG
 Test Speed: HIGH
 Temperature: 25.0DEG
 Operators: Alan Wang
 Test Date: 08 May 2023

γ Range: 0 - 180DEG
 γ Interval: 1.0DEG
 Test System: EVERFINE GO-R5000_V2 SYSTEM V2.00.416
 Humidity: 43.5%
 Test Distance: 2.500m [K=1.0390]
 Remarks:

AAI Figure

Test:U:277.00V I:0.1460A P:31.990W PF:0.7910 Freq:60.00Hz Lamp Flux:2933.82x1 lm		
NAME:	TYPE:LED	WEIGHT:
SPEC.:	DIM.:	SERIAL No.:
MFR.: ASD Lighting corp	SUR.:	Shielding Angle:



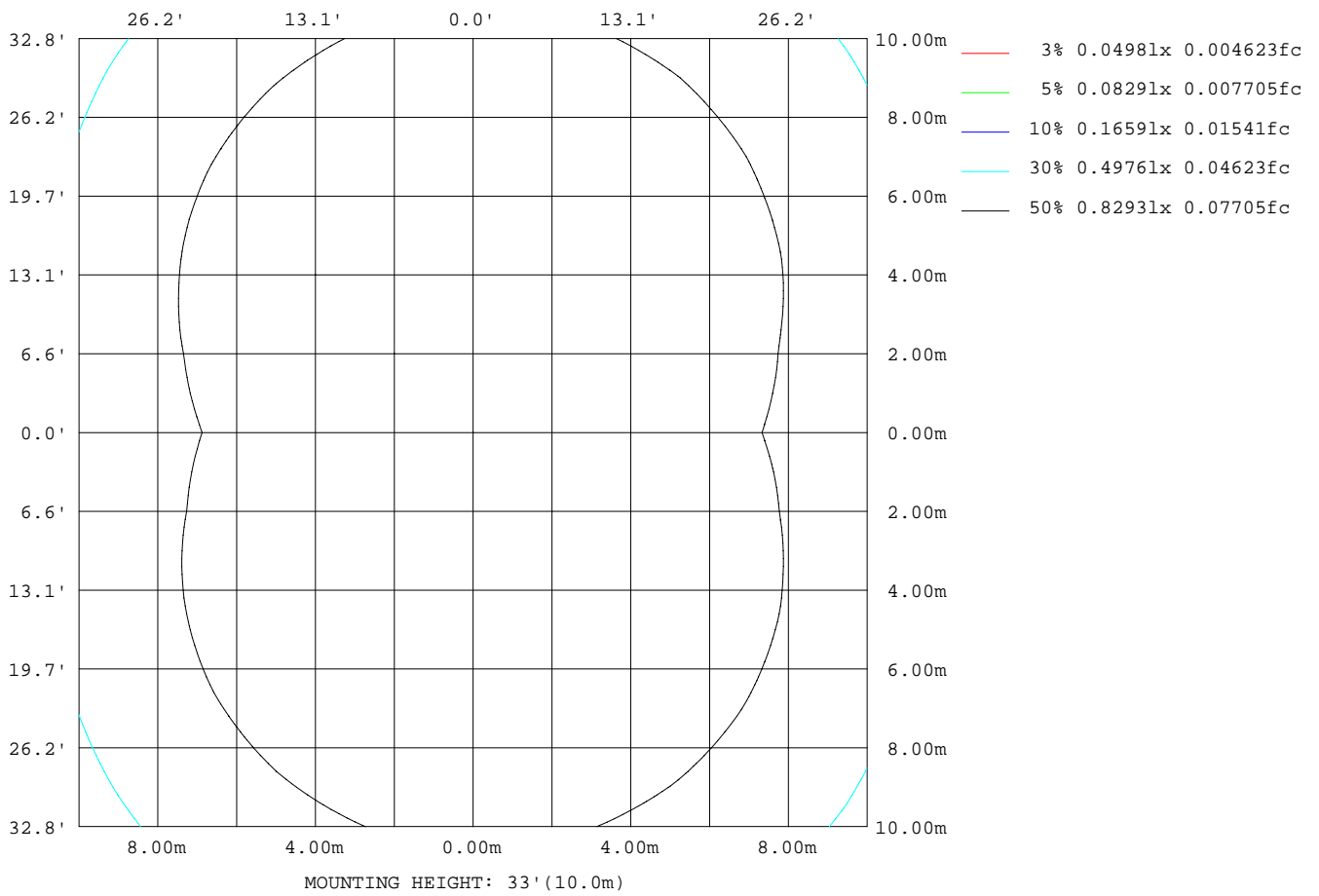
Note:The Curves indicate the illuminated area and the average illumination when the luminaire is at different distance.

C Range: 0 - 360DEG
 C Interval: 15.0DEG
 Test Speed: HIGH
 Temperature: 25.0DEG
 Operators:Alan Wang
 Test Date:08 May 2023

γ Range: 0 - 180DEG
 γ Interval: 1.0DEG
 Test System:EVERFINE GO-R5000_V2 SYSTEM V2.00.416
 Humidity: 43.5%
 Test Distance:2.500m [K=1.0390]
 Remarks:

ISOLUX DIAGRAM

Test:U:277.00V I:0.1460A P:31.990W PF:0.7910 Freq:60.00Hz Lamp Flux:2933.82x1 lm		
NAME:	TYPE:LED	WEIGHT:
SPEC.:	DIM.:	SERIAL No.:
MFR.: ASD Lighting corp	SUR.:	Shielding Angle:



C Range: 0 - 360DEG
 C Interval: 15.0DEG
 Test Speed: HIGH
 Temperature: 25.0DEG
 Operators: Alan Wang
 Test Date: 08 May 2023

γ Range: 0 - 180DEG
 γ Interval: 1.0DEG
 Test System: EVERFINE GO-R5000_V2 SYSTEM V2.00.416
 Humidity: 43.5%
 Test Distance: 2.500m [K=1.0390]
 Remarks:

LED Avg.L Report

Test:U:277.00V I:0.1460A P:31.990W PF:0.7910 Freq:60.00Hz Lamp Flux:2933.82x1 lm		
NAME:	TYPE:LED	WEIGHT:
SPEC.:	DIM.:	SERIAL No.:
MFR.: ASD Lighting corp	SUR.:	Shielding Angle:

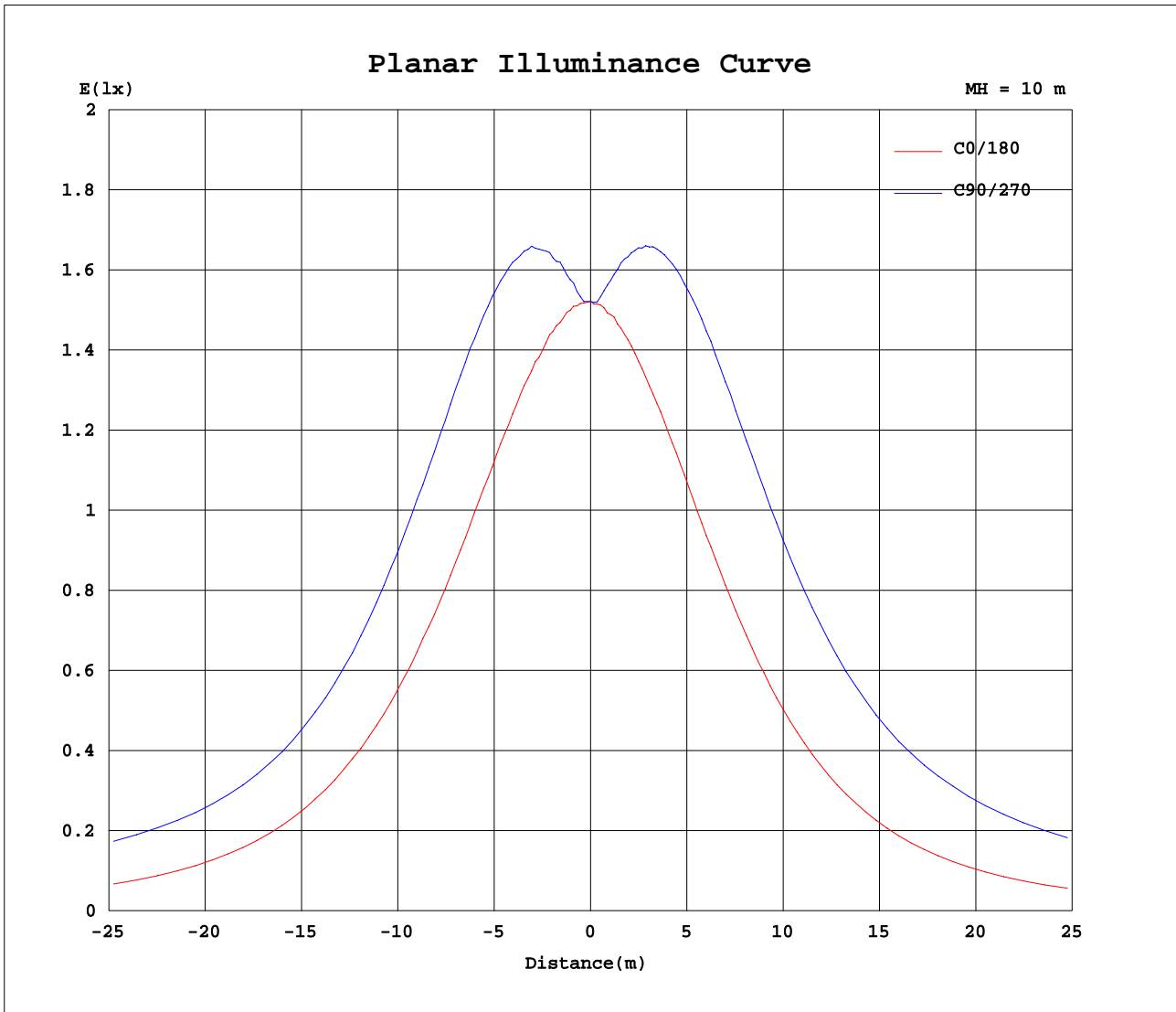
AvgL	cd/m2
L_0~180(65)av	1584
L_0~180(75)av	2243
L_0~180(85)av	4647
L_90~270(65)av	3999
L_90~270(75)av	9163
L_90~270(85)av	29946
L_45(65)av	2983
L_45(75)av	5622
L_45(85)av	17742

Standard: GB/T 29293-2012

C Range: 0 - 360DEG
C Interval: 15.0DEG
Test Speed: HIGH
Temperature: 25.0DEG
Operators: Alan Wang
Test Date: 08 May 2023

γ Range: 0 - 180DEG
 γ Interval: 1.0DEG
Test System: EVERFINE GO-R5000_V2 SYSTEM V2.00.416
Humidity: 43.5%
Test Distance: 2.500m [K=1.0390]
Remarks:

Planar Illuminance Curve



C Range: 0 - 360DEG
 C Interval: 15.0DEG
 Test Speed: HIGH
 Temperature: 25.0DEG
 Operators: Alan Wang
 Test Date: 08 May 2023

γ Range: 0 - 180DEG
 γ Interval: 1.0DEG
 Test System: EVERFINE GO-R5000_V2 SYSTEM V2.00.416
 Humidity: 43.5%
 Test Distance: 2.500m [K=1.0390]
 Remarks:

LUMINOUS DISTRIBUTION INTENSITY DATA

Test:U:277.00V I:0.1460A P:31.990W PF:0.7910 Freq:60.00Hz Lamp Flux:2933.82x1 lm		
NAME:	TYPE:LED	WEIGHT:
SPEC.:	DIM.:	SERIAL No.:
MFR.: ASD Lighting corp	SUR.:	Shielding Angle:

Table--1

UNIT: cd

C(DEG) γ (DEG)	0	15	30	45	60	75	90	105	120	135	150	165	180	195	210	225	240	255	270
0	152	152	152	152	152	152	152	152	152	152	152	152	152	152	152	152	152	152	152
5	153	152	153	155	157	158	159	158	156	154	153	152	151	151	152	154	156	158	158
10	153	154	159	163	167	169	170	169	166	162	157	152	151	152	157	163	166	169	170
15	153	157	165	173	179	182	183	181	177	170	162	154	150	154	162	171	178	182	184
20	155	161	172	183	191	196	197	194	188	178	168	156	150	157	168	180	189	196	198
25	157	166	180	193	204	210	211	208	199	187	173	158	150	159	175	189	201	210	213
30	158	169	187	203	215	223	225	220	210	196	178	161	149	162	180	198	213	223	227
35	158	173	194	213	226	235	237	232	220	203	183	162	148	163	185	207	223	236	240
40	158	176	200	221	235	244	246	240	227	209	186	162	146	165	189	213	232	246	252
45	156	177	204	227	243	252	253	247	233	213	188	161	142	164	192	219	239	255	262
50	153	176	206	231	248	257	259	251	236	215	188	159	138	162	192	221	245	262	270
55	148	174	205	232	250	261	263	254	238	215	187	155	131	158	191	223	249	268	278
60	140	169	203	232	255	268	272	262	241	214	182	149	123	151	188	223	255	279	291
65	132	163	200	236	268	292	299	283	252	215	178	141	113	145	184	227	268	302	319
70	125	159	202	253	308	348	359	333	283	227	177	134	104	138	182	236	296	346	370
75	118	155	209	285	368	424	440	406	336	252	180	128	94.7	130	182	252	331	396	428
80	104	147	213	306	402	465	483	448	373	274	182	119	81.0	120	179	261	352	425	461
85	84.7	131	206	306	405	471	491	456	380	276	176	104	63.5	105	169	258	354	429	465
90	67.5	117	197	301	404	469	489	456	379	273	169	91.6	47.3	91.7	160	252	351	427	462
95	80.4	128	209	316	420	490	509	476	396	287	180	102	56.9	102	170	265	367	444	480
100	95.8	132	209	316	425	496	519	485	402	291	185	108	72.0	109	176	271	374	452	488
105	107	131	200	296	400	476	499	466	385	278	181	111	85.4	112	174	261	359	435	472
110	122	132	192	269	355	421	446	418	347	256	175	113	100	116	172	245	327	395	427
115	138	139	187	247	310	360	378	357	302	234	171	120	115	120	170	230	293	347	370
120	151	152	182	230	277	311	323	306	268	218	167	132	128	131	169	219	269	309	328
125	162	161	177	219	257	283	291	278	248	208	164	141	139	138	167	210	251	284	300
130	169	168	177	209	240	262	268	258	233	198	163	147	148	142	163	201	237	265	278
135	174	171	183	198	224	243	249	239	217	188	170	151	155	153	168	192	223	246	260
140	177	172	185	191	207	223	228	220	201	182	172	154	159	155	173	181	207	228	239
145	179	171	184	193	196	204	208	201	190	185	173	153	163	157	169	184	192	210	218
150	179	169	181	190	196	198	198	196	191	182	172	152	165	155	165	184	192	197	200
155	174	167	177	186	192	196	196	193	187	179	169	149	163	153	164	175	189	195	198
160	160	158	173	181	186	188	188	186	181	174	157	127	144	136	149	169	181	189	193
165	144	154	167	174	179	181	180	178	173	152	130	110	122	123	119	137	164	178	184
170	131	137	149	160	169	172	173	165	134	122	109	104	103	103	104	111	122	145	170
175	139	137	140	151	146	147	132	109	113	120	119	123	120	120	122	116	115	109	119
180	144	142	136	142	110	112	51.7	92.3	136	132	147	146	142	142	140	136	131	125	103

C Range: 0 - 360DEG
 C Interval: 15.0DEG
 Test Speed: HIGH
 Temperature: 25.0DEG
 Operators: Alan Wang
 Test Date: 08 May 2023

γ Range: 0 - 180DEG
 γ Interval: 1.0DEG
 Test System: EVERFINE GO-R5000_V2 SYSTEM V2.00.416
 Humidity: 43.5%
 Test Distance: 2.500m [K=1.0390]
 Remarks:

LUMINOUS DISTRIBUTION INTENSITY DATA

Test:U:277.00V I:0.1460A P:31.990W PF:0.7910 Freq:60.00Hz Lamp Flux:2933.82x1 lm		
NAME:	TYPE:LED	WEIGHT:
SPEC.:	DIM.:	SERIAL No.:
MFR.: ASD Lighting corp	SUR.:	Shielding Angle:

Table--2

UNIT: cd

C(DEG) γ (DEG)	285	300	315	330	345														
0	152	152	152	152	152														
5	157	157	155	153	153														
10	169	167	163	158	154														
15	182	179	172	165	157														
20	197	191	183	172	160														
25	212	205	193	179	165														
30	225	217	203	187	169														
35	238	229	214	194	172														
40	249	239	223	200	175														
45	259	248	230	205	177														
50	267	255	235	208	176														
55	274	260	238	208	174														
60	286	268	240	206	169														
65	310	282	244	204	163														
70	356	313	256	203	158														
75	412	355	277	205	153														
80	445	384	292	205	143														
85	450	387	292	197	127														
90	445	383	285	186	112														
95	463	399	299	199	125														
100	471	404	303	205	133														
105	453	387	292	203	134														
110	409	351	273	200	138														
115	358	315	257	197	145														
120	320	290	244	194	158														
125	295	271	234	191	167														
130	275	255	223	186	173														
135	255	238	211	191	175														
140	236	221	199	193	177														
145	215	204	200	191	174														
150	202	202	198	189	172														
155	200	199	194	186	171														
160	194	193	190	182	167														
165	185	185	183	178	162														
170	175	176	172	161	147														
175	147	146	143	146	136														
180	89.3	100	129	136	139														

C Range: 0 - 360DEG
 C Interval: 15.0DEG
 Test Speed: HIGH
 Temperature: 25.0DEG
 Operators: Alan Wang
 Test Date: 08 May 2023

γ Range: 0 - 180DEG
 γ Interval: 1.0DEG
 Test System: EVERFINE GO-R5000_V2 SYSTEM V2.00.416
 Humidity: 43.5%
 Test Distance: 2.500m [K=1.0390]
 Remarks: