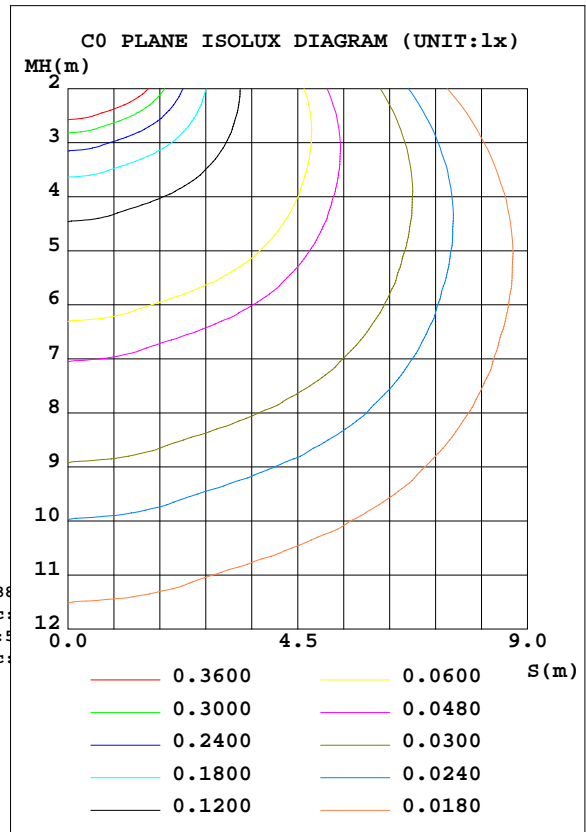
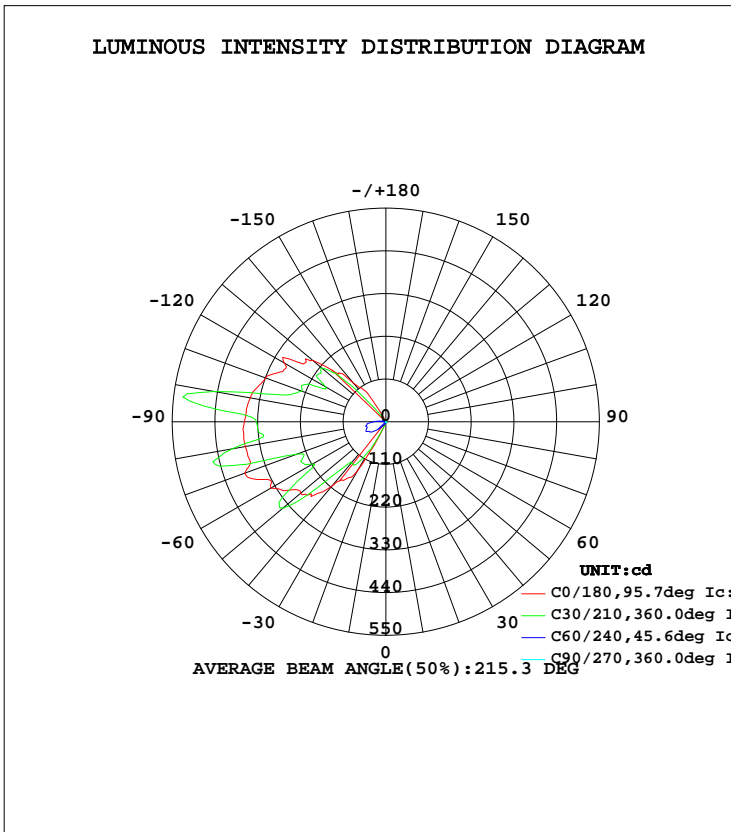


LUMINAIRE PHOTOMETRIC TEST REPORT

Test:U:120.0V I:0.0832A P:9.795W PF:0.9812 Lamp Flux:900.31lx1 lm		
NAME: ASD-OLCLS-1D9CC-BK/BZ 5000K	TYPE:LED	WEIGHT:
SPEC.:	DIM.:	SERIAL No.:
MFR.: ASD Lighting corp	SUR.:	PROTECTION ANGLE:

DATA OF LAMP		PHOTOMETRIC DATA Eff: 91.91 lm/W			
MODEL	ASD-OLCLS-1D9CC-BK	I _{max} (cd)	586.4	S/MH(C0/180)	12.04
NOMINAL POWER(W)	9	LOR(%)	100.0	S/MH(C90/270)	1.03
RATED VOLTAGE(V)	120	TOTAL FLUX(lm)	900.31	η UP, DN(C0-180)	18.6,27.4
NOMINAL FLUX(lm)	900.311	CIE CLASS	DIFFUSE	η UP, DN(C180-360)	24.6,29.4
LAMPS INSIDE	1	η up(%)	43.2	CIBSE SHR NOM	0.00
TEST VOLTAGE(V)	120	η down(%)	56.8	CIBSE SHR MAX	1.00



C Range: 0 - 360DEG
 C Interval: 15.0DEG
 Test Speed: HIGH
 Temperature:25.3DEG
 Operators:
 Test Date:2022-03-29

γ Range: 0 - 180DEG
 γ Interval: 1.0DEG
 Test System:EVERFINE GO-2000B_V1 SYSTEM V2.0.291
 Humidity:65.0%
 Test Distance:7.500m [K=1.0000]
 Remarks:

ZONAL FLUX DIAGRAM

ZONAL FLUX DIAGRAM:

γ	C0	C45	C90	C135	C180	C225	C270	C315	γ	Φ zone	Φ total	Φ lum,lamp
10	2.392	1.702	2.630	6.520	4.969	3.719	2.237	1.903	0- 10	0.3028	0.3028	0.03,0.03
20	2.472	1.853	2.627	14.00	10.05	6.436	1.921	1.979	10- 20	1.457	1.760	0.20,0.20
30	2.722	2.084	2.745	95.96	143.1	19.70	1.690	2.172	20- 30	11.06	12.82	1.42,1.42
40	3.031	2.350	2.550	128.4	215.9	96.96	1.371	2.407	30- 40	31.13	43.96	4.88,4.88
50	3.316	2.615	2.305	257.4	286.5	131.2	1.155	2.669	40- 50	58.02	102.0	11.3,11.3
60	3.647	2.877	1.860	216.1	342.5	127.1	1.077	3.000	50- 60	77.70	179.7	20,20
70	3.932	3.077	1.691	225.2	386.6	241.8	1.125	3.200	60- 70	95.11	274.8	30.5,30.5
80	4.236	3.189	1.429	444.9	367.8	214.4	1.190	3.420	70- 80	116.3	391.1	43.4,43.4
90	4.425	3.304	1.337	241.9	364.5	194.2	1.252	3.555	80- 90	119.9	511.0	56.8,56.8
100	4.333	3.231	1.236	196.5	354.6	261.1	1.313	3.547	90-100	112.3	623.3	69.2,69.2
110	4.033	3.112	1.213	236.7	330.0	142.5	1.363	3.451	100-110	102.6	725.9	80.6,80.6
120	3.651	2.985	1.267	138.8	302.5	106.5	1.415	3.251	110-120	82.32	808.2	89.8,89.8
130	3.313	2.769	1.298	29.73	245.5	29.20	1.464	3.008	120-130	55.46	863.7	95.9,95.9
140	3.043	2.565	1.345	6.093	129.1	8.485	1.487	2.831	130-140	27.53	891.2	99,99
150	2.923	2.338	1.406	3.193	34.12	3.546	1.497	2.600	140-150	6.924	898.1	99.8,99.8
160	2.902	2.141	1.448	1.756	6.011	1.745	1.517	2.373	150-160	1.397	899.5	99.9,99.9
170	2.865	1.953	1.468	1.810	2.858	1.741	1.527	2.176	160-170	0.6135	900.1	100,100
180	2.854	1.849	1.517	1.960	2.858	1.841	1.514	1.960	170-180	0.1935	900.3	100,100
DEG	LUMINOUS INTENSITY:cd									UNIT:lm		

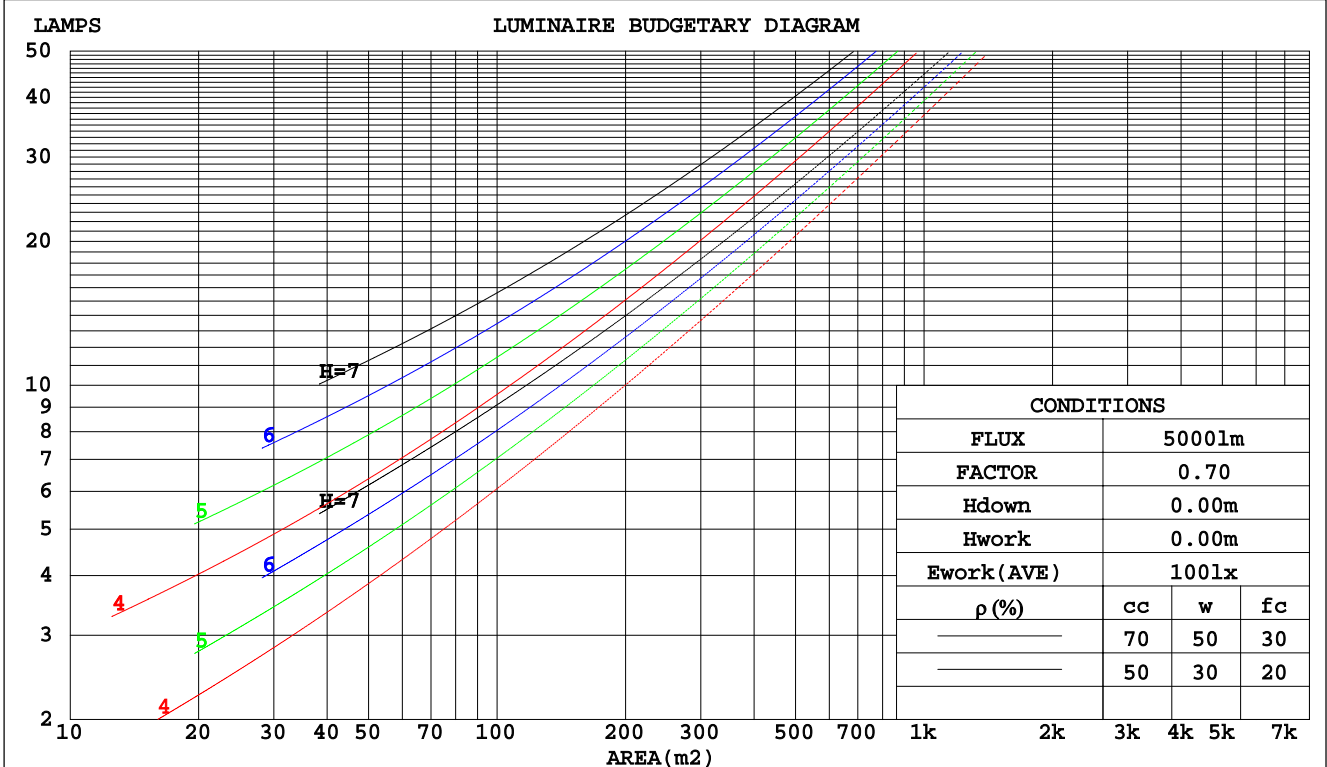
C Range: 0 - 360DEG
C Interval: 15.0DEG
Test Speed: HIGH
Temperature:25.3DEG
Operators:
Test Date:2022-03-29

γ Range: 0 - 180DEG
 γ Interval: 1.0DEG
Test System:EVERFINE GO-2000B_V1 SYSTEM V2.0.291
Humidity:65.0%
Test Distance:7.500m [K=1.0000]
Remarks:

CU AND LUMINAIRE BUDGETARY ESTIMATE DIAGRAM

Test:U:120.0V I:0.0832A P:9.795W PF:0.9812 Lamp Flux:900.31lx1 lm		
NAME: ASD-OLCLS-1D9CC-BK/BZ 5000K	TYPE:LED	WEIGHT:
SPEC.:	DIM.:	SERIAL No.:
MFR.: ASD Lighting corp	SUR.:	PROTECTION ANGLE:

pcc	80%			70%			50%			30%			10%			0
pw	50%	30%	10%	50%	30%	10%	50%	30%	10%	50%	30%	10%	50%	30%	10%	0
pfc	20%			20%			20%			20%			20%			0
RCR	RCR:Room Cavity Ratio						Coefficients of Utilization(CU)									
0.0	1.09	1.09	1.09	1.01	1.01	1.01	.87	.87	.87	.74	.74	.74	.62	.62	.62	.57
1.0	.85	.78	.72	.78	.72	.67	.66	.61	.57	.55	.51	.48	.44	.41	.39	.33
2.0	.70	.61	.53	.64	.56	.49	.54	.47	.42	.44	.39	.34	.35	.31	.27	.22
3.0	.59	.49	.41	.54	.45	.38	.45	.38	.32	.36	.31	.26	.28	.24	.20	.16
4.0	.51	.41	.33	.47	.38	.30	.39	.31	.25	.31	.25	.20	.24	.19	.15	.12
5.0	.45	.34	.27	.41	.32	.25	.34	.26	.20	.27	.21	.16	.21	.16	.12	.09
6.0	.39	.29	.22	.36	.27	.21	.30	.22	.17	.24	.18	.13	.18	.14	.10	.07
7.0	.35	.25	.19	.32	.23	.17	.27	.19	.14	.21	.16	.11	.17	.12	.08	.05
8.0	.31	.22	.16	.29	.20	.15	.24	.17	.12	.19	.14	.09	.15	.10	.07	.04
9.0	.28	.20	.14	.26	.18	.13	.22	.15	.10	.17	.12	.08	.14	.09	.06	.03
10.0	.26	.18	.12	.24	.16	.11	.20	.13	.09	.16	.11	.07	.12	.08	.05	.03



C Range: 0 - 360DEG
 C Interval: 15.0DEG
 Test Speed: HIGH
 Temperature: 25.3DEG
 Operators:
 Test Date: 2022-03-29

γ Range: 0 - 180DEG
 γ Interval: 1.0DEG
 Test System: EVERFINE GO-2000B_V1 SYSTEM V2.0.291
 Humidity: 65.0%
 Test Distance: 7.500m [K=1.0000]
 Remarks:

WEC AND CCEC

Test:U:120.0V I:0.0832A P:9.795W PF:0.9812 Lamp Flux:900.311x1 lm		
NAME: ASD-OLCLS-1D9CC-BK/BZ 5000K	TYPE:LED	WEIGHT:
SPEC.:	DIM.:	SERIAL No.:
MFR.: ASD Lighting corp	SUR.:	PROTECTION ANGLE:

ρcc	80%			70%			50%			30%			10%			0
ρw	50%	30%	10%	50%	30%	10%	50%	30%	10%	50%	30%	10%	50%	30%	10%	0
ρfc	20%			20%			20%			20%			20%			0
RCR	RCR:Room Cavity Ratio						Wall Exitance Coefficients(WEC)									
0.0																
1.0	.474	.270	.085	.454	.259	.082	.415	.238	.076	.380	.219	.070	.347	.201	.065	
2.0	.386	.211	.065	.367	.202	.062	.332	.184	.057	.299	.168	.053	.269	.152	.048	
3.0	.331	.176	.053	.313	.168	.051	.281	.152	.046	.251	.138	.042	.224	.124	.038	
4.0	.291	.151	.044	.275	.144	.043	.245	.130	.039	.218	.117	.035	.192	.105	.032	
5.0	.260	.132	.038	.245	.126	.037	.218	.114	.033	.193	.102	.030	.169	.090	.027	
6.0	.235	.118	.034	.222	.112	.032	.197	.101	.029	.173	.090	.026	.151	.080	.024	
7.0	.214	.106	.030	.202	.101	.029	.179	.091	.026	.157	.081	.023	.137	.071	.021	
8.0	.197	.096	.027	.186	.091	.026	.164	.082	.023	.144	.073	.021	.125	.064	.019	
9.0	.182	.088	.025	.172	.084	.024	.152	.075	.021	.133	.067	.019	.116	.059	.017	
10.0	.170	.081	.023	.160	.077	.022	.141	.069	.020	.124	.062	.017	.107	.054	.015	

ρcc	80%			70%			50%			30%			10%			0
ρw	50%	30%	10%	50%	30%	10%	50%	30%	10%	50%	30%	10%	50%	30%	10%	0
ρfc	20%			20%			20%			20%			20%			0
RCR	RCR:Room Cavity Ratio						Ceiling Cavity Exitance Coefficients(CCEC)									
0.0	.520	.520	.520	.444	.444	.444	.303	.303	.303	.174	.174	.174	.056	.056	.056	
1.0	.524	.487	.454	.448	.418	.390	.307	.287	.270	.176	.166	.157	.057	.054	.051	
2.0	.519	.466	.421	.445	.401	.364	.305	.277	.254	.176	.161	.149	.056	.052	.048	
3.0	.512	.451	.402	.439	.389	.348	.302	.270	.244	.174	.158	.144	.056	.051	.047	
4.0	.505	.440	.390	.433	.380	.339	.298	.265	.238	.172	.155	.141	.055	.050	.046	
5.0	.497	.431	.382	.427	.373	.332	.294	.260	.234	.170	.153	.139	.055	.050	.046	
6.0	.489	.423	.376	.421	.367	.327	.290	.257	.232	.168	.151	.138	.054	.049	.045	
7.0	.482	.417	.372	.415	.362	.324	.286	.254	.230	.166	.149	.137	.054	.049	.045	
8.0	.475	.412	.369	.409	.357	.321	.283	.251	.228	.165	.148	.136	.053	.049	.045	
9.0	.469	.407	.366	.404	.354	.319	.280	.249	.227	.163	.147	.135	.053	.048	.045	
10.0	.462	.403	.364	.399	.350	.318	.277	.247	.226	.161	.146	.135	.052	.048	.045	

C Range: 0 - 360DEG
 C Interval: 15.0DEG
 Test Speed: HIGH
 Temperature:25.3DEG
 Operators:
 Test Date:2022-03-29

γ Range: 0 - 180DEG
 γ Interval: 1.0DEG
 Test System:EVERFINE GO-2000B_V1 SYSTEM V2.0.291
 Humidity:65.0%
 Test Distance:7.500m [K=1.0000]
 Remarks:

UGR(Unified Glare Rating) Table

Test:U:120.0V I:0.0832A P:9.795W PF:0.9812 Lamp Flux:900.31lx1 lm										
NAME: ASD-OLCLS-1D9CC-BK/BZ 5000K					TYPE:LED			WEIGHT:		
SPEC.:					DIM.:			SERIAL No.:		
MFR.: ASD Lighting corp					SUR.:			PROTECTION ANGLE:		
ceiling/cavity	0.7	0.7	0.5	0.5	0.3	0.7	0.7	0.5	0.5	0.3
walls	0.5	0.3	0.5	0.3	0.3	0.5	0.3	0.5	0.3	0.3
working plane	0.2	0.2	0.2	0.2	0.2	0.2	0.2	0.2	0.2	0.2
Room dimensions	Viewed crosswise					Viewed endwise				
x = 2H y = 2H	-10.6	-9.4	-9.8	-8.5	-7.5	-15.1	-13.9	-14.3	-13.1	-12.0
3H	-6.9	-5.8	-6.1	-4.9	-3.8	-12.4	-11.3	-11.6	-10.4	-9.3
4H	-4.8	-3.8	-4.0	-2.9	-1.8	-10.8	-9.8	-10.0	-8.9	-7.8
6H	-2.5	-1.5	-1.7	-0.6	0.5	-9.1	-8.1	-8.2	-7.2	-6.0
8H	-1.3	-0.3	-0.4	0.6	1.7	-8.1	-7.1	-7.2	-6.2	-5.0
12H	0.1	1.1	1.0	2.0	3.2	-6.9	-6.0	-6.0	-5.1	-3.9
4H 2H	-10.0	-8.9	-9.1	-8.0	-6.9	-12.7	-11.6	-11.9	-10.8	-9.6
3H	-6.0	-5.1	-5.1	-4.1	-3.0	-10.1	-9.1	-9.2	-8.2	-7.1
4H	-3.7	-2.9	-2.8	-1.9	-0.8	-8.6	-7.7	-7.7	-6.8	-5.6
6H	-1.2	-0.4	-0.3	0.5	1.7	-6.9	-6.1	-6.0	-5.2	-3.9
8H	0.2	0.9	1.1	1.9	3.1	-5.9	-5.2	-5.0	-4.2	-3.0
12H	1.7	2.4	2.6	3.4	4.6	-4.8	-4.1	-3.9	-3.2	-1.9
8H 4H	-3.3	-2.5	-2.4	-1.6	-0.4	-6.7	-5.9	-5.8	-5.0	-3.8
6H	-0.4	0.2	0.5	1.2	2.4	-4.8	-4.1	-3.8	-3.2	-1.9
8H	1.2	1.8	2.1	2.7	4.0	-3.7	-3.1	-2.8	-2.2	-0.9
12H	3.0	3.5	4.0	4.5	5.8	-2.6	-2.1	-1.6	-1.1	0.2
12H 4H	-3.2	-2.5	-2.3	-1.6	-0.4	-6.0	-5.3	-5.1	-4.4	-3.1
6H	-0.3	0.3	0.7	1.3	2.5	-3.9	-3.3	-2.9	-2.3	-1.1
8H	1.5	2.0	2.5	3.0	4.3	-2.7	-2.2	-1.7	-1.2	0.1
Variations with the observer position at spacings:										
S = 1.0H	+ 0.1 / - 0.1					+ 0.1 / - 0.1				
1.5H	+ 0.2 / - 0.3					+ 0.2 / - 0.2				
2.0H	+ 0.3 / - 0.4					+ 0.3 / - 0.3				

CIE Pub.117 Corrected 900.3 lm Total Lamp Luminous Flux. (8log(F/F0) = -0.4)

C Range: 0 - 360DEG
 C Interval: 15.0DEG
 Test Speed: HIGH
 Temperature:25.3DEG
 Operators:
 Test Date:2022-03-29

γ Range: 0 - 180DEG
 γ Interval: 1.0DEG
 Test System:EVERFINE GO-2000B_V1 SYSTEM V2.0.291
 Humidity:65.0%
 Test Distance:7.500m [K=1.0000]
 Remarks:

UTILIZATION FACTORS TABLE

Test:U:120.0V I:0.0832A P:9.795W PF:0.9812 Lamp Flux:900.311x1 lm		
NAME: ASD-OLCLS-1D9CC-BK/BZ 5000K	TYPE:LED	WEIGHT:
SPEC.:	DIM.:	SERIAL No.:
MFR.: ASD Lighting corp	SUR.:	PROTECTION ANGLE:

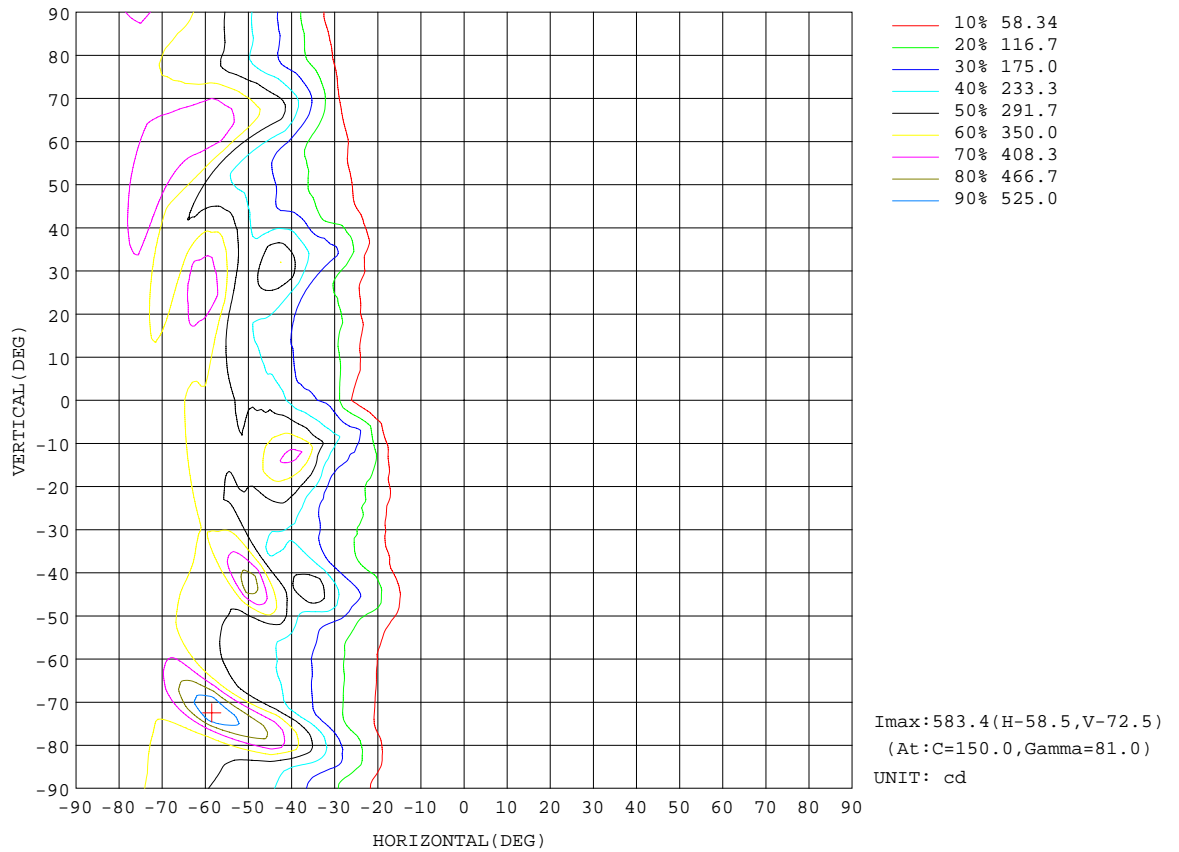
REFLECTANCE										
Ceiling	0.8	0.8	0.8	0.7	0.7	0.7	0.5	0.5	0.5	0
Walls	0.7	0.5	0.3	0.7	0.5	0.3	0.7	0.5	0.3	0
Working plane	0.2	0.2	0.2	0.2	0.2	0.2	0.2	0.2	0.2	0
ROOM INDEX	UTILIZATION FACTORS(PERCENT) k(RI) x RCR = 5									
k = 0.60	33	19	11	31	18	11	28	17	10	3
0.80	41	26	17	39	25	16	35	23	15	6
1.00	48	33	23	45	31	22	40	30	20	9
1.25	55	40	29	52	38	28	45	33	25	12
1.50	61	45	35	57	43	33	49	38	29	15
2.00	69	54	44	64	51	41	55	45	37	20
2.50	74	61	50	69	57	47	59	50	42	23
3.00	79	66	56	73	62	53	63	54	46	26
4.00	84	74	65	78	69	61	67	59	53	31
5.00	88	79	70	82	73	66	70	63	57	34
ROOM INDEX	UF(total)									Direct
According to DIN EN 13032-2 2004			Suspended				SHRNOM = 1.25			

C Range: 0 - 360DEG
 C Interval: 15.0DEG
 Test Speed: HIGH
 Temperature:25.3DEG
 Operators:
 Test Date:2022-03-29

γ Range: 0 - 180DEG
 γ Interval: 1.0DEG
 Test System:EVERFINE GO-2000B_V1 SYSTEM V2.0.291
 Humidity:65.0%
 Test Distance:7.500m [K=1.0000]
 Remarks:

ISOCANDELA DIAGRAM

Test:U:120.0V I:0.0832A P:9.795W PF:0.9812 Lamp Flux:900.31lx1 lm		
NAME: ASD-OLCLS-1D9CC-BK/BZ 5000K	TYPE:LED	WEIGHT:
SPEC.:	DIM.:	SERIAL No.:
MFR.: ASD Lighting corp	SUR.:	PROTECTION ANGLE:

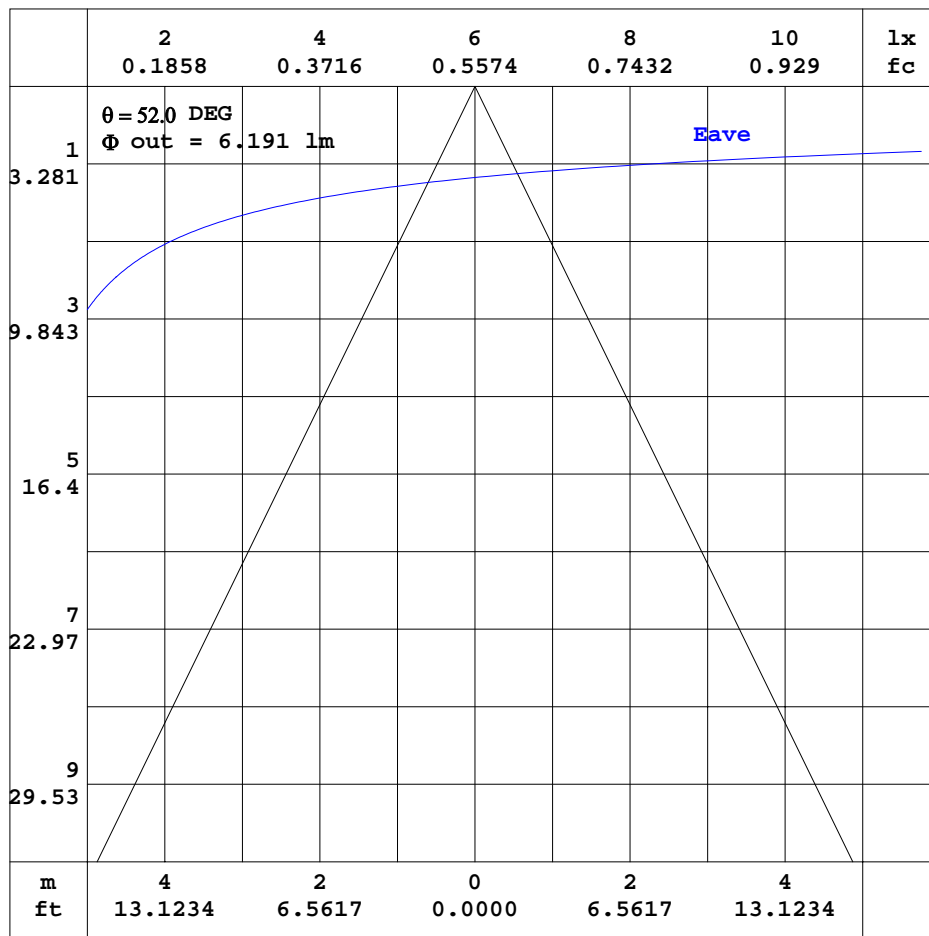


C Range: 0 - 360DEG
 C Interval: 15.0DEG
 Test Speed: HIGH
 Temperature:25.3DEG
 Operators:
 Test Date:2022-03-29

γ Range: 0 - 180DEG
 γ Interval: 1.0DEG
 Test System:EVERFINE GO-2000B_V1 SYSTEM V2.0.291
 Humidity:65.0%
 Test Distance:7.500m [K=1.0000]
 Remarks:

AAI CURVES

Test:U:120.0V I:0.0832A P:9.795W PF:0.9812 Lamp Flux:900.31lx1 lm		
NAME: ASD-OLCLS-1D9CC-BK/BZ 5000K	TYPE:LED	WEIGHT:
SPEC.:	DIM.:	SERIAL No.:
MFR.: ASD Lighting corp	SUR.:	PROTECTION ANGLE:



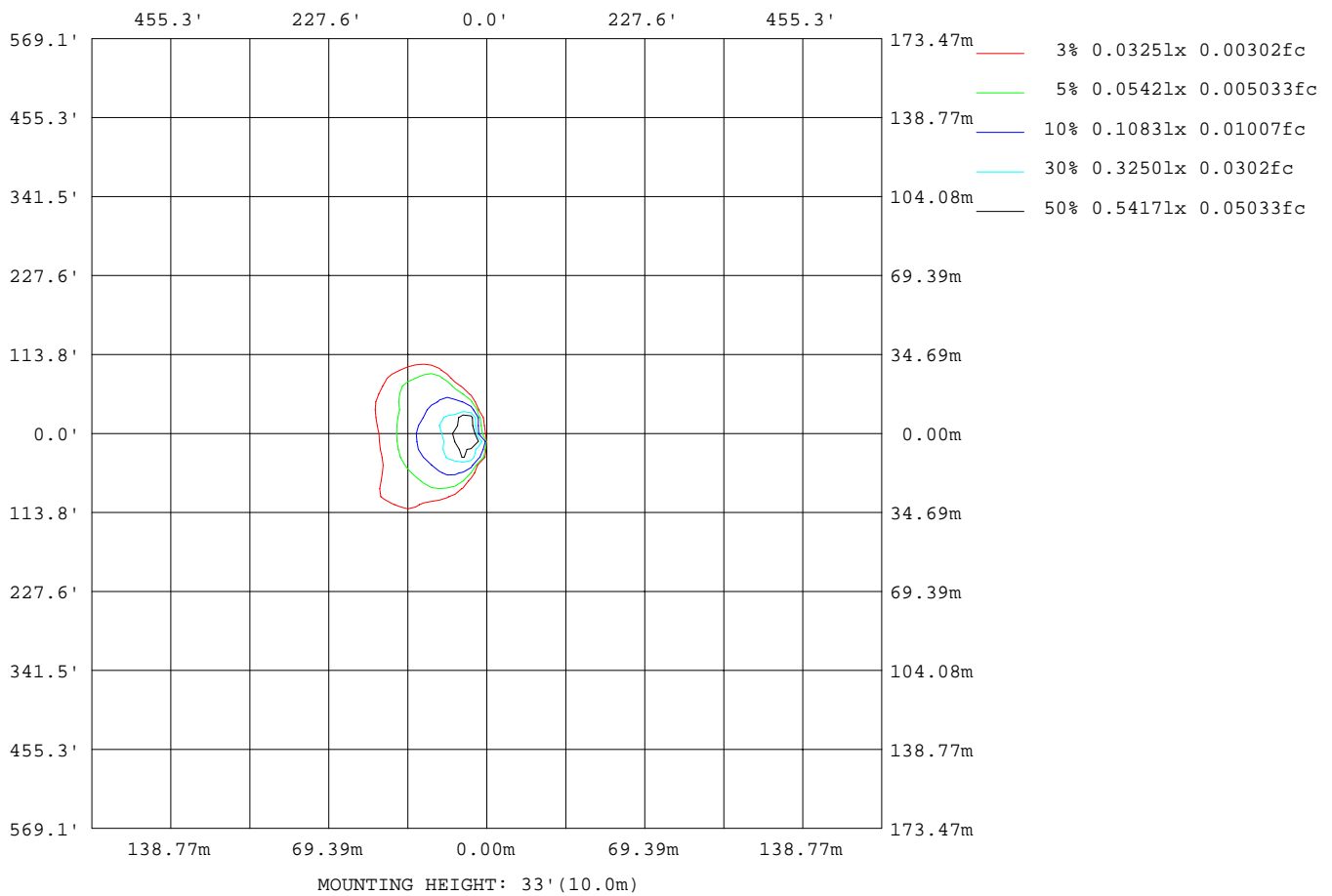
Note: The Curves indicate the illuminated area and the average illumination when the luminaire is at different distance.

C Range: 0 - 360DEG
 C Interval: 15.0DEG
 Test Speed: HIGH
 Temperature: 25.3DEG
 Operators:
 Test Date: 2022-03-29

γ Range: 0 - 180DEG
 γ Interval: 1.0DEG
 Test System: EVERFINE GO-2000B_V1 SYSTEM V2.0.291
 Humidity: 65.0%
 Test Distance: 7.500m [K=1.0000]
 Remarks:

ISOLUX DIAGRAM

Test:U:120.0V I:0.0832A P:9.795W PF:0.9812 Lamp Flux:900.31lx1 lm		
NAME: ASD-OLCLS-1D9CC-BK/BZ 5000K	TYPE:LED	WEIGHT:
SPEC.:	DIM.:	SERIAL No.:
MFR.: ASD Lighting corp	SUR.:	PROTECTION ANGLE:



C Range: 0 - 360DEG
 C Interval: 15.0DEG
 Test Speed: HIGH
 Temperature: 25.3DEG
 Operators:
 Test Date: 2022-03-29

γ Range: 0 - 180DEG
 γ Interval: 1.0DEG
 Test System: EVERFINE GO-2000B_V1 SYSTEM V2.0.291
 Humidity: 65.0%
 Test Distance: 7.500m [K=1.0000]
 Remarks:

LED Avg.L Report

Test:U:120.0V I:0.0832A P:9.795W PF:0.9812 Lamp Flux:900.31lx1 lm		
NAME: ASD-OLCLS-1D9CC-BK/BZ 5000K	TYPE:LED	WEIGHT:
SPEC.:	DIM.:	SERIAL No.:
MFR.: ASD Lighting corp	SUR.:	PROTECTION ANGLE:

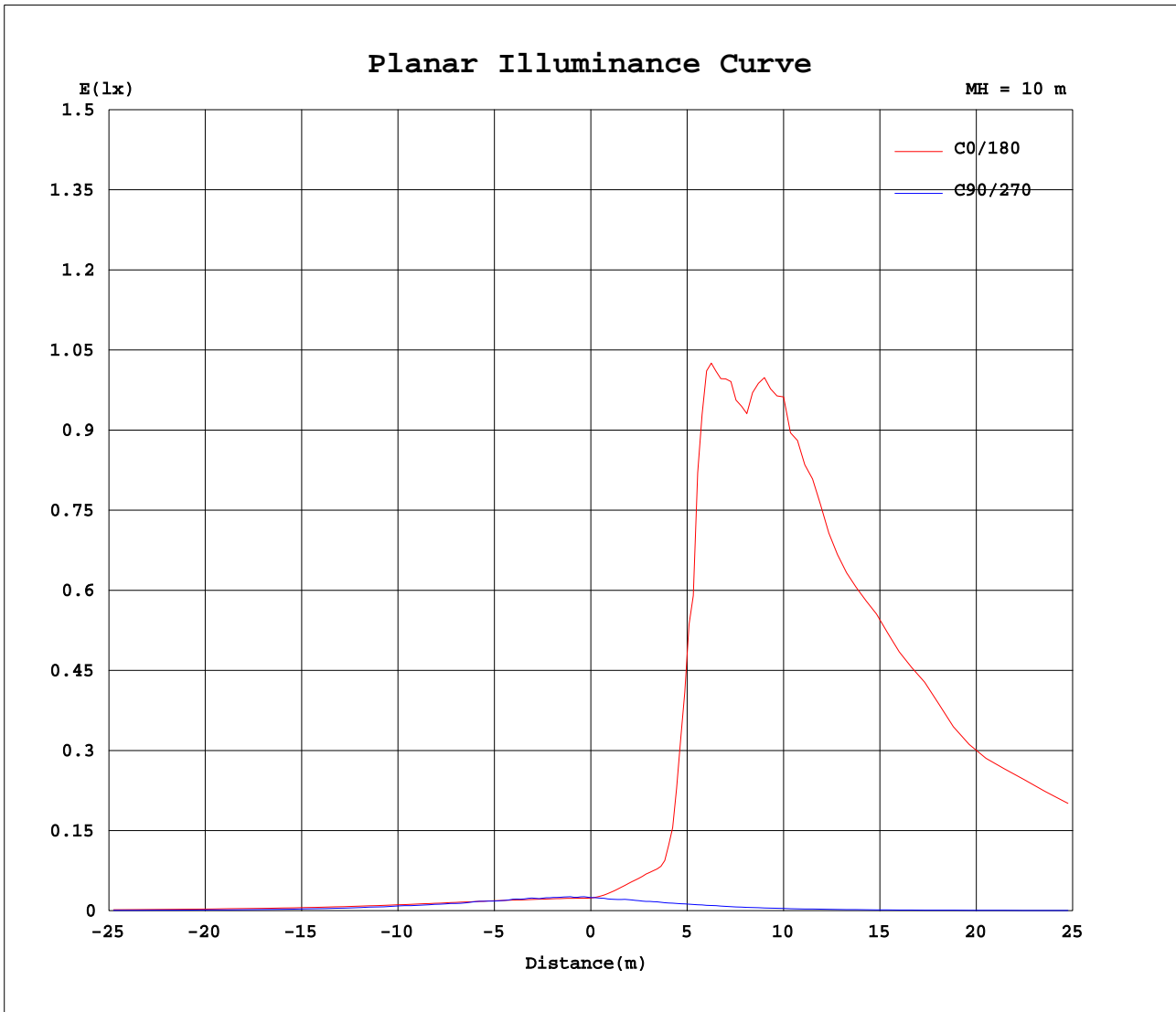
AvgL	cd/m2
L_0~180(65)av	4219
L_0~180(75)av	7125
L_0~180(85)av	21341
L_90~270(65)av	34
L_90~270(75)av	51
L_90~270(85)av	150
L_45(65)av	2094
L_45(75)av	5416
L_45(85)av	15018

Standard: GB/T 29293-2012

C Range: 0 - 360DEG
C Interval: 15.0DEG
Test Speed: HIGH
Temperature:25.3DEG
Operators:
Test Date:2022-03-29

γ Range: 0 - 180DEG
 γ Interval: 1.0DEG
Test System:EVERFINE GO-2000B_V1 SYSTEM V2.0.291
Humidity:65.0%
Test Distance:7.500m [K=1.0000]
Remarks:

Planar Illuminance Curve



C Range: 0 - 360DEG
 C Interval: 15.0DEG
 Test Speed: HIGH
 Temperature: 25.3DEG
 Operators:
 Test Date: 2022-03-29

γ Range: 0 - 180DEG
 γ Interval: 1.0DEG
 Test System: EVERFINE GO-2000B_V1 SYSTEM V2.0.291
 Humidity: 65.0%
 Test Distance: 7.500m [K=1.0000]
 Remarks:

LUMINOUS DISTRIBUTION INTENSITY DATA

Test:U:120.0V I:0.0832A P:9.795W PF:0.9812 Lamp Flux:900.31lx1 lm		
NAME: ASD-OLCLS-1D9CC-BK/BZ 5000K	TYPE:LED	WEIGHT:
SPEC.:	DIM.:	SERIAL No.:
MFR.: ASD Lighting corp	SUR.:	PROTECTION ANGLE:

Table--1

UNIT: cd

C(DEG) γ (DEG)	0	15	30	45	60	75	90	105	120	135	150	165	180	195	210	225	240	255	270
0	2.39	2.46	2.32	2.06	2.82	2.55	2.47	2.66	3.06	3.47	3.84	3.82	2.39	2.46	2.32	2.06	2.82	2.55	2.47
5	2.38	2.21	1.99	1.66	2.19	2.26	2.56	3.10	3.97	5.00	5.53	5.57	3.26	3.59	3.33	2.83	3.46	2.74	2.27
10	2.39	2.24	1.97	1.70	1.74	1.96	2.63	3.65	5.05	6.52	7.84	7.83	4.97	5.30	4.75	3.72	4.06	3.07	2.24
15	2.40	2.30	2.03	1.78	1.48	1.68	2.55	4.00	6.29	8.18	11.1	12.1	7.17	7.43	6.27	5.00	4.89	3.25	2.03
20	2.47	2.38	2.13	1.85	1.44	1.48	2.63	4.55	7.71	14.0	50.2	60.4	10.0	12.1	8.44	6.44	5.98	3.50	1.92
25	2.58	2.48	2.22	1.96	1.48	1.32	2.57	4.93	9.57	54.5	139	177	43.3	58.5	26.7	8.10	6.43	3.73	1.80
30	2.72	2.62	2.36	2.08	1.55	1.21	2.75	5.91	15.6	96.0	147	236	143	119	88.4	19.7	7.87	4.03	1.69
35	2.88	2.80	2.53	2.21	1.63	1.19	2.53	5.90	43.0	124	140	311	181	131	134	53.3	13.3	4.16	1.54
40	3.03	3.00	2.70	2.35	1.71	1.23	2.55	6.89	69.1	128	180	418	216	151	140	97.0	17.3	4.08	1.37
45	3.18	3.17	2.84	2.48	1.82	1.28	2.62	7.47	121	136	222	406	272	179	205	182	24.3	3.97	1.24
50	3.32	3.33	3.00	2.62	1.90	1.34	2.31	7.90	163	257	229	327	287	219	346	131	35.5	3.86	1.16
55	3.48	3.50	3.18	2.75	1.98	1.40	2.09	7.41	114	336	227	292	308	252	299	122	46.5	3.92	1.09
60	3.65	3.69	3.38	2.88	2.08	1.45	1.86	7.52	101	216	475	294	342	401	218	127	49.5	3.82	1.08
65	3.80	3.84	3.52	3.00	2.14	1.49	1.78	7.48	109	214	327	350	353	450	242	134	57.1	3.82	1.09
70	3.93	3.97	3.66	3.08	2.23	1.55	1.69	7.38	117	225	280	365	387	311	245	242	52.8	3.77	1.12
75	4.10	4.12	3.79	3.13	2.33	1.61	1.49	7.02	123	244	302	363	365	344	443	310	51.2	3.64	1.15
80	4.24	4.29	3.93	3.19	2.39	1.66	1.43	6.79	181	445	577	360	368	450	400	214	50.0	3.46	1.19
85	4.37	4.41	4.02	3.25	2.43	1.69	1.39	6.34	191	321	315	358	368	359	327	195	44.5	3.08	1.22
90	4.43	4.48	4.08	3.30	2.47	1.72	1.34	5.40	123	242	294	354	365	422	334	194	31.1	2.80	1.25
95	4.40	4.48	4.06	3.27	2.51	1.73	1.29	4.72	99.6	215	308	352	361	401	471	193	20.8	2.68	1.28
100	4.33	4.41	3.97	3.23	2.52	1.77	1.24	4.23	74.6	197	481	341	355	328	450	261	10.1	2.43	1.31
105	4.19	4.26	3.87	3.17	2.52	1.81	1.21	3.56	52.9	183	454	346	343	356	267	240	8.27	2.23	1.33
110	4.03	4.12	3.79	3.11	2.52	1.82	1.21	3.19	27.8	237	283	370	330	444	230	142	7.53	1.87	1.36
115	3.85	3.98	3.70	3.06	2.51	1.83	1.24	2.85	11.1	232	254	397	302	455	228	115	6.31	1.71	1.38
120	3.65	3.80	3.58	2.98	2.50	1.83	1.27	2.59	6.18	139	210	366	303	397	179	106	5.65	1.51	1.41
125	3.49	3.62	3.39	2.88	2.49	1.81	1.28	1.93	5.49	88.5	167	352	259	284	213	72.4	5.45	1.23	1.43
130	3.31	3.45	3.24	2.77	2.45	1.79	1.30	1.15	4.55	29.7	119	290	246	182	216	29.2	4.25	1.11	1.46
135	3.18	3.32	3.11	2.66	2.37	1.79	1.33	1.13	3.81	7.17	94.1	216	173	134	152	9.04	3.22	1.11	1.48
140	3.04	3.16	2.99	2.56	2.31	1.79	1.34	1.19	3.20	6.09	26.5	164	129	105	40.9	8.49	2.81	1.14	1.49
145	2.95	3.01	2.85	2.46	2.25	1.77	1.37	1.22	2.05	4.61	6.87	16.7	102	47.6	8.68	6.26	1.54	1.19	1.49
150	2.92	2.90	2.72	2.34	2.17	1.74	1.41	1.27	1.36	3.19	5.35	7.12	34.1	8.17	6.78	3.55	1.34	1.24	1.50
155	2.91	2.85	2.63	2.23	2.07	1.71	1.42	1.32	1.39	1.86	3.92	5.21	7.74	6.35	5.21	2.24	1.39	1.27	1.51
160	2.90	2.81	2.55	2.14	1.97	1.66	1.45	1.38	1.46	1.76	2.39	3.69	6.01	4.84	3.22	1.74	1.44	1.32	1.52
165	2.89	2.75	2.45	2.06	1.90	1.64	1.46	1.45	1.52	1.78	2.16	2.57	3.76	2.77	2.27	1.74	1.49	1.37	1.53
170	2.87	2.67	2.38	1.95	1.84	1.58	1.47	1.50	1.59	1.81	2.15	2.46	2.86	2.64	2.24	1.74	1.54	1.42	1.53
175	2.86	2.64	2.32	1.89	1.77	1.56	1.47	1.56	1.66	1.88	2.15	2.41	2.86	2.63	2.23	1.80	1.61	1.48	1.53
180	2.85	2.63	2.27	1.85	1.68	1.55	1.52	1.59	1.76	1.96	2.20	2.39	2.86	2.63	2.26	1.84	1.68	1.53	1.51

C Range: 0 - 360DEG
 C Interval: 15.0DEG
 Test Speed: HIGH
 Temperature:25.3DEG
 Operators:
 Test Date:2022-03-29

γ Range: 0 - 180DEG
 γ Interval: 1.0DEG
 Test System:EVERFINE GO-2000B_V1 SYSTEM V2.0.291
 Humidity:65.0%
 Test Distance:7.500m [K=1.0000]
 Remarks:

LUMINOUS DISTRIBUTION INTENSITY DATA

Test:U:120.0V I:0.0832A P:9.795W PF:0.9812 Lamp Flux:900.311x1 lm		
NAME: ASD-OLCLS-1D9CC-BK/BZ 5000K	TYPE:LED	WEIGHT:
SPEC.:	DIM.:	SERIAL No.:
MFR.: ASD Lighting corp	SUR.:	PROTECTION ANGLE:

Table--2

UNIT: cd

C(DEG) γ (DEG)	285	300	315	330	345														
0	2.66	3.06	3.47	3.84	3.82														
5	2.12	2.24	2.43	2.63	2.78														
10	1.76	1.66	1.90	2.32	2.66														
15	1.44	1.48	1.91	2.35	2.69														
20	1.27	1.55	1.98	2.42	2.75														
25	1.21	1.63	2.07	2.52	2.82														
30	1.26	1.72	2.17	2.65	2.93														
35	1.32	1.81	2.29	2.79	3.06														
40	1.38	1.91	2.41	2.93	3.19														
45	1.43	2.01	2.54	3.06	3.30														
50	1.49	2.09	2.67	3.20	3.43														
55	1.56	2.21	2.82	3.37	3.58														
60	1.64	2.34	3.00	3.56	3.73														
65	1.71	2.44	3.10	3.72	3.87														
70	1.74	2.53	3.20	3.87	4.02														
75	1.78	2.59	3.31	4.01	4.19														
80	1.83	2.67	3.42	4.12	4.32														
85	1.89	2.73	3.50	4.23	4.42														
90	1.95	2.77	3.55	4.29	4.50														
95	1.99	2.77	3.57	4.29	4.51														
100	2.01	2.76	3.55	4.22	4.45														
105	2.02	2.76	3.50	4.13	4.32														
110	2.02	2.75	3.45	4.04	4.21														
115	2.03	2.72	3.37	3.87	4.04														
120	2.03	2.69	3.25	3.69	3.82														
125	2.04	2.61	3.12	3.51	3.60														
130	2.03	2.55	3.01	3.34	3.37														
135	2.03	2.51	2.92	3.20	3.19														
140	1.99	2.45	2.83	3.05	3.02														
145	1.93	2.38	2.71	2.88	2.89														
150	1.89	2.30	2.60	2.72	2.75														
155	1.86	2.22	2.48	2.60	2.65														
160	1.84	2.14	2.37	2.51	2.58														
165	1.79	2.03	2.28	2.41	2.54														
170	1.74	1.93	2.18	2.32	2.48														
175	1.68	1.83	2.07	2.25	2.42														
180	1.61	1.75	1.96	2.20	2.39														

C Range: 0 - 360DEG
 C Interval: 15.0DEG
 Test Speed: HIGH
 Temperature:25.3DEG
 Operators:
 Test Date:2022-03-29

γ Range: 0 - 180DEG
 γ Interval: 1.0DEG
 Test System:EVERFINE GO-2000B_V1 SYSTEM V2.0.291
 Humidity:65.0%
 Test Distance:7.500m [K=1.0000]
 Remarks: