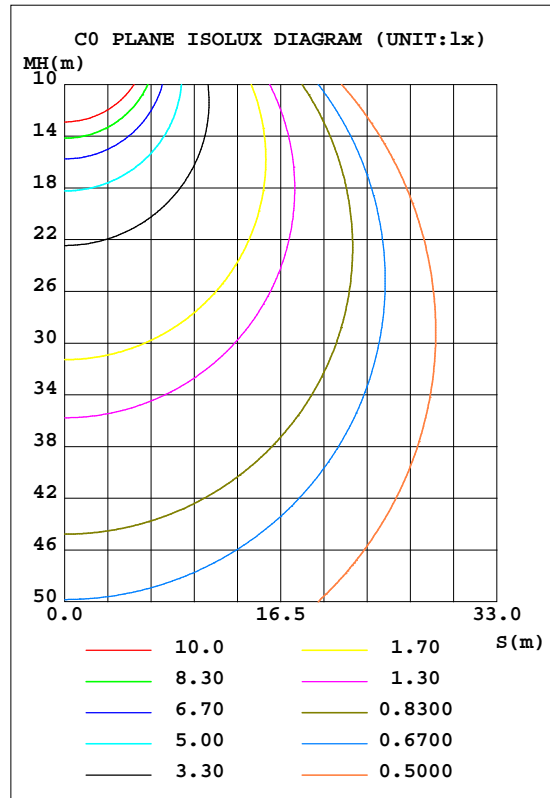
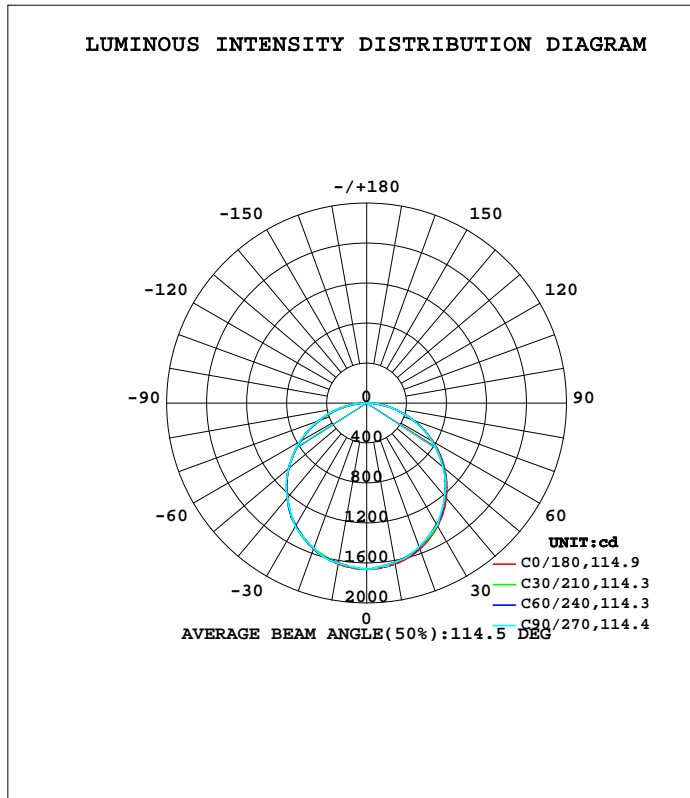


LUMINAIRE PHOTOMETRIC TEST REPORT

Test:U:120.1V I:0.3435A P:41.21W PF:0.9862 Lamp Flux:4897.06x1 lm		
NAME: ASD Lighting corp	TYPE:LED PANEL	WEIGHT:
SPEC.: ASD-ELP05-24D40CC-STD(4000K)	DIM.: 1213x603mm	SERIAL No.:BLD20171213P04
MFR.: ASD Lighting corp	SUR.:0.558*1.17	Shielding Angle:

DATA OF LAMP		PHOTOMETRIC DATA Eff: 118.83 lm/W			
MODEL		I <sub>max</sub> (cd)	1664	S/MH(C0/180)	1.27
NOMINAL POWER(W)	40	LOR(%)	100.0	S/MH(C90/270)	1.27
RATED VOLTAGE(V)		TOTAL FLUX(lm)	4897.1	η UP, DN(C0-180)	0.0,49.6
NOMINAL FLUX(lm)	4897.06	CIE CLASS	DIRECT	η UP, DN(C180-360)	0.0,50.4
LAMPS INSIDE	1	η up(%)	0.0	CIBSE SHR NOM	1.25
TEST VOLTAGE(V)		η down(%)	100.0	CIBSE SHR MAX	1.35



C Range: 0 - 360DEG  
 C Interval: 5.0DEG  
 Test Speed: HIGH  
 Temperature:22DEG  
 Operators:HUA  
 Test Date:2017-12-13

γ Range: 0 - 180DEG  
 γ Interval: 0.5DEG  
 Test System:EVERFINE GO-2000B\_V1 SYSTEM V2.0.350  
 Humidity:43%  
 Test Distance:12.218m [K=1.0000]  
 Remarks:

ZONAL FLUX DIAGRAM

ZONAL FLUX DIAGRAM:

γ	C0	C45	C90	C135	C180	C225	C270	C315	γ	Φ zone	Φ total	%lum,lamp
5	1657	1644	1640	1643	1657	1647	1645	1647	0- 5	39.52	39.52	0.81,0.81
10	1636	1617	1617	1617	1636	1624	1627	1624	5- 10	116.9	156.4	3.19,3.19
15	1602	1584	1590	1583	1601	1594	1604	1594	10- 15	190.7	347.2	7.09,7.09
20	1554	1543	1532	1542	1554	1556	1548	1557	15- 20	258.5	605.7	12.4,12.4
25	1493	1476	1470	1475	1493	1490	1488	1491	20- 25	317.2	922.9	18.8,18.8
30	1420	1399	1408	1397	1420	1413	1427	1414	25- 30	366.0	1289	26.3,26.3
35	1336	1317	1311	1316	1335	1332	1332	1333	30- 35	403.1	1692	34.6,34.6
40	1240	1228	1215	1227	1239	1244	1237	1245	35- 40	426.2	2118	43.3,43.3
45	1134	1115	1115	1113	1133	1130	1139	1131	40- 45	435.8	2554	52.2,52.2
50	1019	1001	995.8	997.5	1018	1016	1020	1018	45- 50	431.6	2986	61,61
55	895.8	884.7	873.6	880.2	894.2	899.2	897.5	901.5	50- 55	412.7	3398	69.4,69.4
60	766.0	752.8	751.4	748.0	764.8	766.5	775.5	768.7	55- 60	380.9	3779	77.2,77.2
65	631.4	622.1	619.0	617.5	630.8	635.3	642.0	636.7	60- 65	337.7	4117	84.1,84.1
70	494.5	491.0	486.8	485.1	493.8	502.8	508.6	503.8	65- 70	284.2	4401	89.9,89.9
75	358.8	358.7	355.6	353.2	358.6	368.1	375.4	369.3	70- 75	222.9	4624	94.4,94.4
80	218.5	229.1	228.6	224.3	214.8	236.5	243.7	237.1	75- 80	156.5	4781	97.6,97.6
85	76.86	108.5	108.0	103.9	73.99	109.3	114.3	109.0	80- 85	88.84	4870	99.4,99.4
90	1.215	13.65	18.96	11.35	2.164	10.55	18.99	10.10	85- 90	26.31	4896	100,100
95	0	0	0	0	0	0	0	0	90- 95	1.236	4897	100,100
100	0	0	0	0	0	0	0	0	95-100	0	4897	100,100
105	0	0	0	0	0	0	0	0	100-105	0	4897	100,100
110	0	0	0	0	0	0	0	0	105-110	0	4897	100,100
115	0	0	0	0	0	0	0	0	110-115	0	4897	100,100
120	0	0	0	0	0	0	0	0	115-120	0	4897	100,100
125	0	0	0	0	0	0	0	0	120-125	0	4897	100,100
130	0	0	0	0	0	0	0	0	125-130	0	4897	100,100
135	0	0	0	0	0	0	0	0	130-135	0	4897	100,100
140	0	0	0	0	0	0	0	0	135-140	0	4897	100,100
145	0	0	0	0	0	0	0	0	140-145	0	4897	100,100
150	0	0	0	0	0	0	0	0	145-150	0	4897	100,100
155	0	0	0	0	0	0	0	0	150-155	0	4897	100,100
160	0	0	0	0	0	0	0	0	155-160	0	4897	100,100
165	0	0	0	0	0	0	0	0	160-165	0	4897	100,100
170	0	0	0	0	0	0	0	0	165-170	0	4897	100,100
175	0	0	0	0	0	0	0	0	170-175	0	4897	100,100
180	0	0	0	0	0	0	0	0	175-180	0	4897	100,100
DEG	LUMINOUS INTENSITY:cd									UNIT:lm		

Conical surface Flux(90deg): 2554.1 lm

%lum = 52.2%  
 %lamp = 52.2%

Conical surface Flux(120deg): 3779.3 lm

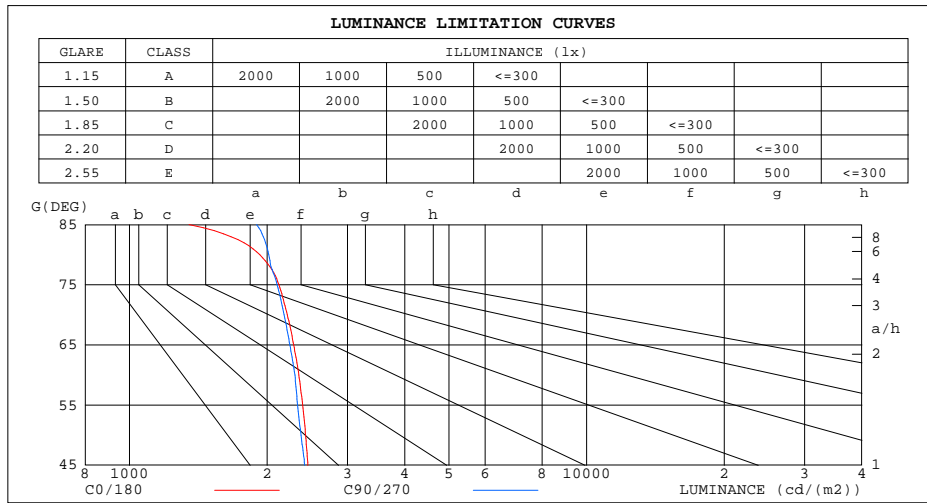
%lum = 77.2%  
 %lamp = 77.2%

C Range: 0 - 360DEG  
 C Interval: 5.0DEG  
 Test Speed: HIGH  
 Temperature:22DEG  
 Operators:HUA  
 Test Date:2017-12-13

γ Range: 0 - 180DEG  
 γ Interval: 0.5DEG  
 Test System:EVERFINE GO-2000B\_V1 SYSTEM V2.0.350  
 Humidity:43%  
 Test Distance:12.218m [K=1.0000]  
 Remarks:

LUMINANCE LIMITATION CURVES

Test:U:120.1V I:0.3435A P:41.21W PF:0.9862 Lamp Flux:4897.06x1 lm		
NAME: ASD Lighting corp	TYPE:LED PANEL	WEIGHT:
SPEC.: ASD-ELP05-24D40CC-STD(4000K)	DIM.: 1213x603mm	SERIAL No.:BLD20171213P04
MFR.: ASD Lighting corp	SUR.:0.558*1.17	Shielding Angle:



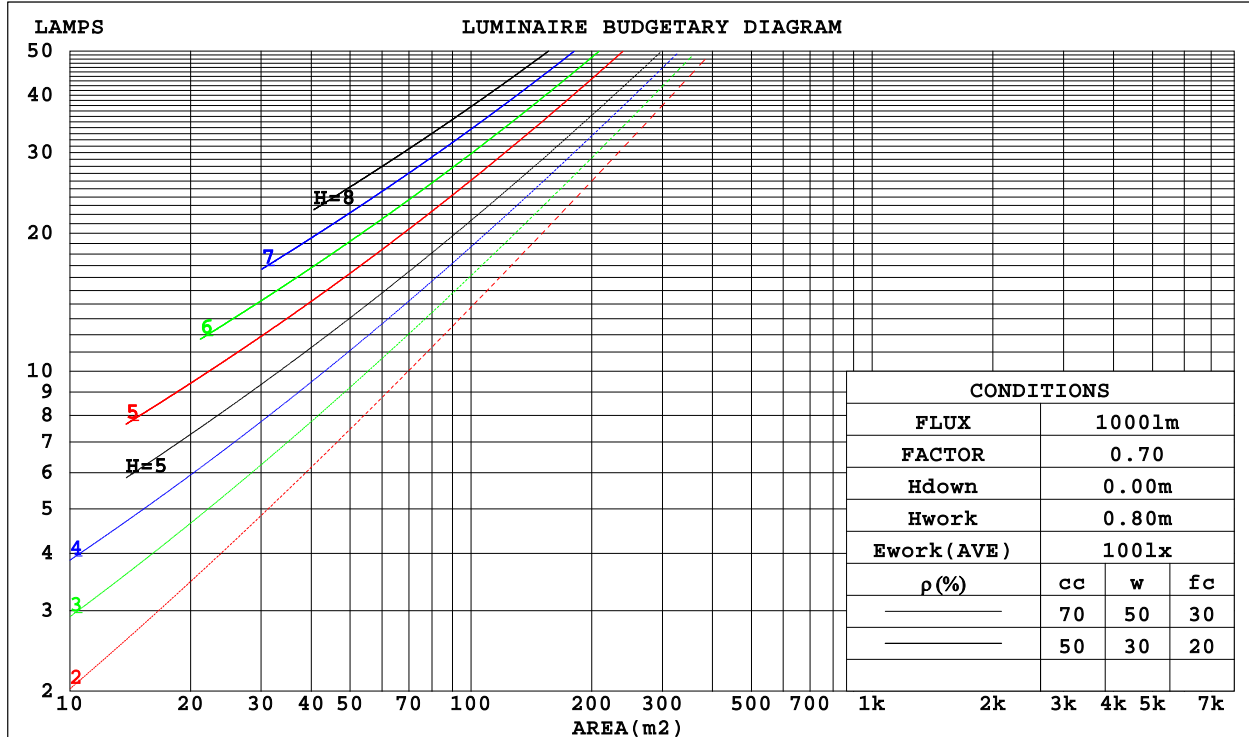
C Range: 0 - 360DEG  
 C Interval: 5.0DEG  
 Test Speed: HIGH  
 Temperature:22DEG  
 Operators:HUA  
 Test Date:2017-12-13

γ Range: 0 - 180DEG  
 γ Interval: 0.5DEG  
 Test System:EVERFINE GO-2000B\_V1 SYSTEM V2.0.350  
 Humidity:43%  
 Test Distance:12.218m [K=1.0000]  
 Remarks:

CU AND LUMINAIRE BUDGETARY ESTIMATE DIAGRAM

Test:U:120.1V I:0.3435A P:41.21W PF:0.9862 Lamp Flux:4897.06x1 lm		
NAME: ASD Lighting corp	TYPE:LED PANEL	WEIGHT:
SPEC.: ASD-ELP05-24D40CC-STD(4000K)	DIM.: 1213x603mm	SERIAL No.:BLD20171213P04
MFR.: ASD Lighting corp	SUR.:0.558*1.17	Shielding Angle:

$\rho_{cc}$	80%			70%			50%			30%			10%			0
$\rho_w$	50%	30%	10%	50%	30%	10%	50%	30%	10%	50%	30%	10%	50%	30%	10%	0
$\rho_{fc}$	20%			20%			20%			20%			20%			0
RCR	RCR:Room Cavity Ratio						Coefficients of Utilization(CU)									
0.0	1.19	1.19	1.19	1.16	1.16	1.16	1.11	1.11	1.11	1.06	1.06	1.06	1.02	1.02	1.02	.00
1.0	1.03	.99	.95	1.01	.97	.93	.97	.93	.90	.93	.90	.88	.89	.87	.85	.83
2.0	.90	.83	.77	.88	.81	.76	.84	.79	.74	.81	.76	.72	.78	.74	.71	.68
3.0	.79	.70	.63	.77	.69	.63	.74	.67	.62	.71	.65	.61	.69	.64	.60	.57
4.0	.69	.60	.54	.68	.60	.53	.66	.58	.52	.63	.57	.52	.61	.56	.51	.49
5.0	.62	.53	.46	.61	.52	.46	.59	.51	.45	.57	.50	.45	.55	.49	.44	.42
6.0	.56	.47	.40	.55	.46	.40	.53	.45	.39	.51	.44	.39	.50	.44	.39	.37
7.0	.50	.42	.35	.50	.41	.35	.48	.40	.35	.47	.40	.35	.45	.39	.34	.32
8.0	.46	.37	.31	.45	.37	.31	.44	.36	.31	.43	.36	.31	.41	.35	.31	.29
9.0	.42	.34	.28	.42	.34	.28	.40	.33	.28	.39	.33	.28	.38	.32	.28	.26
10.0	.39	.31	.26	.38	.31	.26	.37	.30	.25	.36	.30	.25	.36	.29	.25	.23



C Range: 0 - 360DEG  
 C Interval: 5.0DEG  
 Test Speed: HIGH  
 Temperature:22DEG  
 Operators:HUA  
 Test Date:2017-12-13

$\gamma$  Range: 0 - 180DEG  
 $\gamma$  Interval: 0.5DEG  
 Test System:EVERFINE GO-2000B\_V1 SYSTEM V2.0.350  
 Humidity:43%  
 Test Distance:12.218m [K=1.0000]  
 Remarks:

WEC AND CCEC

Test:U:120.1V I:0.3435A P:41.21W PF:0.9862 Lamp Flux:4897.06x1 lm		
NAME: ASD Lighting corp	TYPE:LED PANEL	WEIGHT:
SPEC.: ASD-ELP05-24D40CC-STD(4000K)	DIM.: 1213x603mm	SERIAL No.:BLD20171213P04
MFR.: ASD Lighting corp	SUR.:0.558*1.17	Shielding Angle:

pcc	80%			70%			50%			30%			10%			0
pw	50%	30%	10%	50%	30%	10%	50%	30%	10%	50%	30%	10%	50%	30%	10%	0
pfc	20%			20%			20%			20%			20%			0
RCR	RCR:Room Cavity Ratio						Wall Exitance Coefficients(WEC)									
0.0																
1.0	.320	.182	.058	.313	.178	.057	.299	.172	.055	.287	.166	.053	.276	.160	.052	
2.0	.299	.164	.050	.292	.161	.050	.281	.156	.048	.270	.151	.047	.260	.147	.046	
3.0	.275	.146	.044	.270	.144	.043	.259	.140	.043	.250	.137	.042	.241	.133	.041	
4.0	.253	.132	.039	.248	.130	.038	.239	.127	.038	.230	.124	.037	.222	.121	.037	
5.0	.233	.119	.034	.229	.118	.034	.221	.115	.034	.213	.113	.033	.206	.110	.033	
6.0	.216	.108	.031	.212	.107	.031	.205	.105	.031	.198	.103	.030	.192	.101	.030	
7.0	.201	.099	.028	.197	.098	.028	.191	.097	.028	.185	.095	.028	.179	.093	.027	
8.0	.187	.092	.026	.184	.091	.026	.178	.089	.025	.173	.088	.025	.168	.086	.025	
9.0	.175	.085	.024	.173	.084	.024	.167	.083	.023	.163	.081	.023	.158	.080	.023	
10.0	.165	.079	.022	.162	.078	.022	.158	.077	.022	.153	.076	.022	.149	.075	.022	

pcc	80%			70%			50%			30%			10%			0
pw	50%	30%	10%	50%	30%	10%	50%	30%	10%	50%	30%	10%	50%	30%	10%	0
pfc	20%			20%			20%			20%			20%			0
RCR	RCR:Room Cavity Ratio						Ceiling Cavity Exitance Coefficients(CCEC)									
0.0	.191	.191	.191	.163	.163	.163	.111	.111	.111	.064	.064	.064	.020	.020	.020	
1.0	.181	.156	.134	.155	.134	.115	.106	.092	.080	.061	.053	.046	.020	.017	.015	
2.0	.173	.132	.097	.148	.114	.084	.102	.079	.059	.059	.046	.034	.019	.015	.011	
3.0	.166	.115	.074	.142	.099	.064	.098	.069	.045	.056	.040	.026	.018	.013	.009	
4.0	.158	.101	.058	.136	.088	.050	.093	.061	.035	.054	.036	.021	.017	.012	.007	
5.0	.151	.091	.047	.129	.079	.041	.089	.055	.029	.052	.032	.017	.017	.011	.006	
6.0	.143	.083	.039	.123	.071	.034	.085	.050	.024	.049	.029	.014	.016	.010	.005	
7.0	.136	.076	.033	.117	.066	.029	.081	.046	.020	.047	.027	.012	.015	.009	.004	
8.0	.130	.070	.029	.112	.061	.025	.077	.043	.018	.045	.025	.011	.015	.008	.003	
9.0	.124	.065	.025	.107	.056	.022	.074	.040	.016	.043	.023	.009	.014	.008	.003	
10.0	.118	.061	.022	.102	.053	.020	.071	.037	.014	.041	.022	.008	.013	.007	.003	

C Range: 0 - 360DEG  
 C Interval: 5.0DEG  
 Test Speed: HIGH  
 Temperature:22DEG  
 Operators:HUA  
 Test Date:2017-12-13

γ Range: 0 - 180DEG  
 γ Interval: 0.5DEG  
 Test System:EVERFINE GO-2000B\_V1 SYSTEM V2.0.350  
 Humidity:43%  
 Test Distance:12.218m [K=1.0000]  
 Remarks:

UGR(Unified Glare Rating) Table

Test:U:120.1V I:0.3435A P:41.21W PF:0.9862 Lamp Flux:4897.06x1 lm										
NAME: ASD Lighting corp					TYPE:LED PANEL			WEIGHT:		
SPEC.: ASD-ELP05-24D40CC-STD(4000K)					DIM.: 1213x603mm			SERIAL No.:BLD20171213P04		
MFR.: ASD Lighting corp					SUR.:0.558*1.17			Shielding Angle:		
ceiling/cavity	0.7	0.7	0.5	0.5	0.3	0.7	0.7	0.5	0.5	0.3
walls	0.5	0.3	0.5	0.3	0.3	0.5	0.3	0.5	0.3	0.3
working plane	0.2	0.2	0.2	0.2	0.2	0.2	0.2	0.2	0.2	0.2
Room dimensions	Viewed crosswise					Viewed endwise				
x = 2H y = 2H	15.9	17.4	16.1	17.6	17.8	15.8	17.4	16.1	17.6	17.8
3H	17.5	18.9	17.8	19.1	19.4	17.4	18.9	17.7	19.1	19.3
4H	18.1	19.5	18.5	19.7	20.0	18.1	19.5	18.4	19.7	20.0
6H	18.6	19.9	18.9	20.1	20.4	18.7	19.9	19.0	20.2	20.5
8H	18.7	19.9	19.0	20.2	20.5	18.9	20.1	19.2	20.4	20.7
12H	18.7	19.9	19.1	20.2	20.5	19.0	20.2	19.4	20.5	20.8
4H 2H	16.5	17.9	16.8	18.1	18.4	16.5	17.8	16.8	18.1	18.3
3H	18.3	19.5	18.7	19.8	20.1	18.3	19.5	18.6	19.8	20.1
4H	19.1	20.2	19.5	20.5	20.8	19.1	20.2	19.5	20.5	20.9
6H	19.7	20.6	20.1	21.0	21.3	19.8	20.8	20.2	21.1	21.5
8H	19.8	20.7	20.2	21.1	21.5	20.0	21.0	20.5	21.3	21.7
12H	19.9	20.7	20.3	21.1	21.5	20.2	21.1	20.7	21.5	21.9
8H 4H	19.4	20.3	19.8	20.7	21.1	19.4	20.3	19.8	20.7	21.1
6H	20.1	20.9	20.6	21.3	21.7	20.3	21.0	20.7	21.4	21.9
8H	20.4	21.1	20.9	21.5	22.0	20.6	21.3	21.1	21.7	22.2
12H	20.6	21.2	21.1	21.6	22.1	20.9	21.5	21.4	22.0	22.4
12H 4H	19.4	20.3	19.9	20.6	21.1	19.4	20.3	19.9	20.7	21.1
6H	20.2	20.9	20.7	21.3	21.8	20.3	21.0	20.8	21.4	21.9
8H	20.6	21.1	21.0	21.6	22.1	20.8	21.3	21.2	21.8	22.3
Variations with the observer position at spacings:										
S = 1.0H	+ 0.1 / - 0.1					+ 0.1 / - 0.2				
1.5H	+ 0.1 / - 0.2					+ 0.2 / - 0.3				
2.0H	+ 0.2 / - 0.2					+ 0.1 / - 0.3				

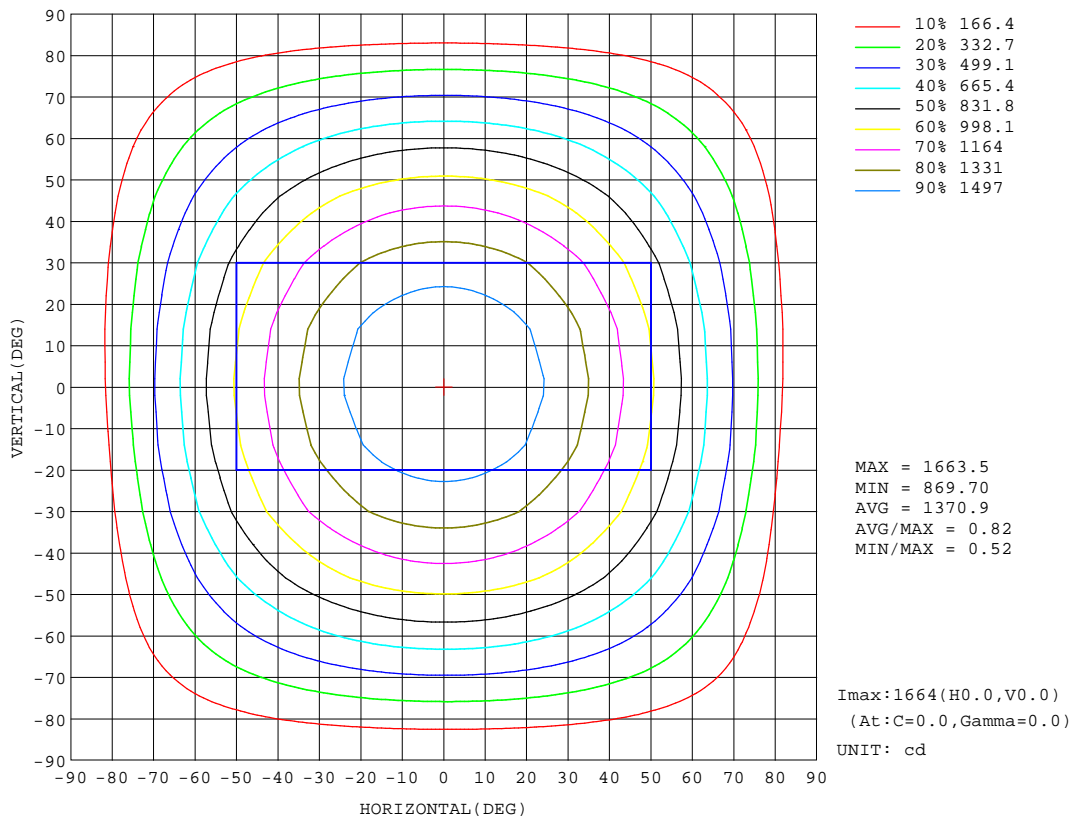
CIE Pub.117 Corrected 4897 lm Total Lamp Luminous Flux.(8log(F/F0) = 5.5)

C Range: 0 - 360DEG  
 C Interval: 5.0DEG  
 Test Speed: HIGH  
 Temperature:22DEG  
 Operators:HUA  
 Test Date:2017-12-13

γ Range: 0 - 180DEG  
 γ Interval: 0.5DEG  
 Test System:EVERFINE GO-2000B\_V1 SYSTEM V2.0.350  
 Humidity:43%  
 Test Distance:12.218m [K=1.0000]  
 Remarks:

ISOCANDELA DIAGRAM

Test:U:120.1V I:0.3435A P:41.21W PF:0.9862 Lamp Flux:4897.06x1 lm		
NAME: ASD Lighting corp	TYPE:LED PANEL	WEIGHT:
SPEC.: ASD-ELP05-24D40CC-STD(4000K)	DIM.: 1213x603mm	SERIAL No.:BLD20171213P04
MFR.: ASD Lighting corp	SUR.:0.558*1.17	Shielding Angle:



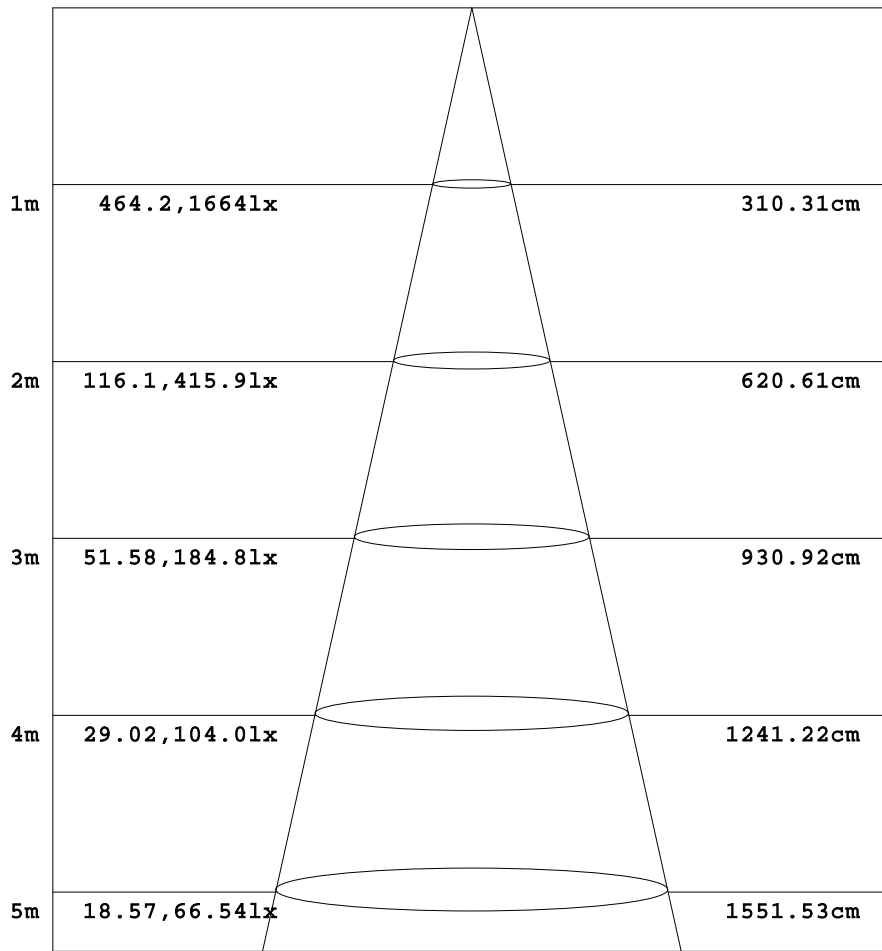
C Range: 0 - 360DEG  
 C Interval: 5.0DEG  
 Test Speed: HIGH  
 Temperature:22DEG  
 Operators:HUA  
 Test Date:2017-12-13

γ Range: 0 - 180DEG  
 γ Interval: 0.5DEG  
 Test System:EVERFINE GO-2000B\_V1 SYSTEM V2.0.350  
 Humidity:43%  
 Test Distance:12.218m [K=1.0000]  
 Remarks:

AAI Figure

Test:U:120.1V I:0.3435A P:41.21W PF:0.9862 Lamp Flux:4897.06x1 lm		
NAME: ASD Lighting corp	TYPE:LED PANEL	WEIGHT:
SPEC.: ASD-ELP05-24D40CC-STD(4000K)	DIM.: 1213x603mm	SERIAL No.:BLD20171213P04
MFR.: ASD Lighting corp	SUR.:0.558*1.17	Shielding Angle:

Flux out:3594 lm



Height                      Eavg, Emax                      Angle:114.39deg                      Diameter

Note:The Curves indicate the illuminated area and the average illumination when the luminaire is at different distance.

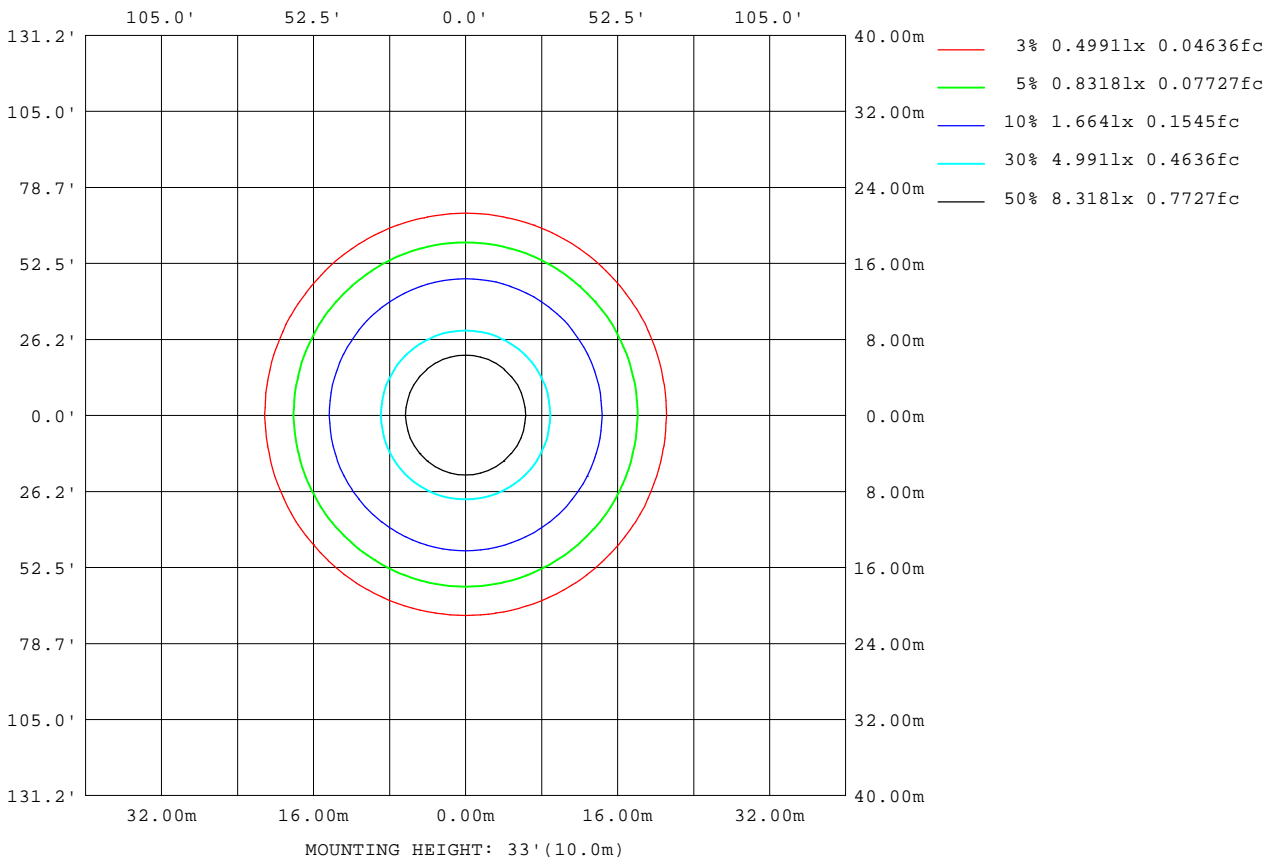
C Range: 0 - 360DEG  
 C Interval: 5.0DEG  
 Test Speed: HIGH  
 Temperature:22DEG  
 Operators:HUA  
 Test Date:2017-12-13

γ Range: 0 - 180DEG  
 γ Interval: 0.5DEG  
 Test System:EVERFINE GO-2000B\_V1 SYSTEM V2.0.350  
 Humidity:43%  
 Test Distance:12.218m [K=1.0000]  
 Remarks:



ISOLUX DIAGRAM

Test:U:120.1V I:0.3435A P:41.21W PF:0.9862 Lamp Flux:4897.06x1 lm		
NAME: ASD Lighting corp	TYPE:LED PANEL	WEIGHT:
SPEC.: ASD-ELP05-24D40CC-STD(4000K)	DIM.: 1213x603mm	SERIAL No.:BLD20171213P04
MFR.: ASD Lighting corp	SUR.:0.558*1.17	Shielding Angle:



C Range: 0 - 360DEG  
 C Interval: 5.0DEG  
 Test Speed: HIGH  
 Temperature:22DEG  
 Operators:HUA  
 Test Date:2017-12-13

$\gamma$  Range: 0 - 180DEG  
 $\gamma$  Interval: 0.5DEG  
 Test System:EVERFINE GO-2000B\_V1 SYSTEM V2.0.350  
 Humidity:43%  
 Test Distance:12.218m [K=1.0000]  
 Remarks:

## LED Avg.L Report

Test:U:120.1V I:0.3435A P:41.21W PF:0.9862 Lamp Flux:4897.06x1 lm		
NAME: ASD Lighting corp	TYPE:LED PANEL	WEIGHT:
SPEC.: ASD-ELP05-24D40CC-STD(4000K)	DIM.: 1213x603mm	SERIAL No.:BLD20171213P04
MFR.: ASD Lighting corp	SUR.:0.558*1.17	Shielding Angle:

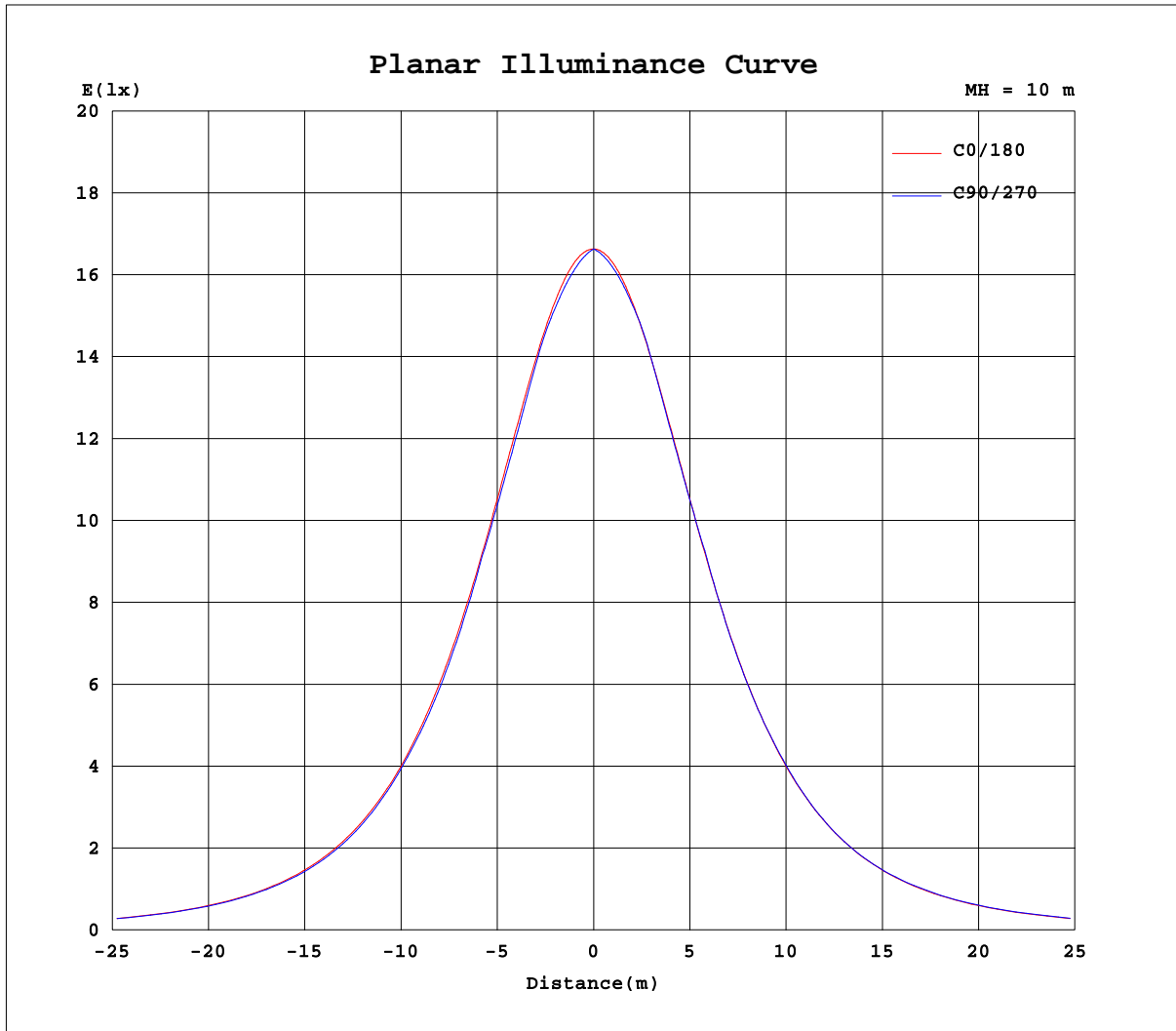
AvgL	cd/m2
L_0~180(65)av	2288
L_0~180(75)av	2123
L_0~180(85)av	1326
L_90~270(65)av	2285
L_90~270(75)av	2163
L_90~270(85)av	1953
L_45(65)av	2276
L_45(75)av	2144
L_45(85)av	1893

Standard: GB/T 29293-2012

C Range: 0 - 360DEG  
C Interval: 5.0DEG  
Test Speed: HIGH  
Temperature:22DEG  
Operators:HUA  
Test Date:2017-12-13

$\gamma$  Range: 0 - 180DEG  
 $\gamma$  Interval: 0.5DEG  
Test System:EVERFINE GO-2000B\_V1 SYSTEM V2.0.350  
Humidity:43%  
Test Distance:12.218m [K=1.0000]  
Remarks:

Planar Illuminance Curve



C Range: 0 - 360DEG  
C Interval: 5.0DEG  
Test Speed: HIGH  
Temperature: 22DEG  
Operators: HUA  
Test Date: 2017-12-13

$\gamma$  Range: 0 - 180DEG  
 $\gamma$  Interval: 0.5DEG  
Test System: EVERFINE GO-2000B\_V1 SYSTEM V2.0.350  
Humidity: 43%  
Test Distance: 12.218m [K=1.0000]  
Remarks:

LUMINOUS DISTRIBUTION INTENSITY DATA

Test:U:120.1V I:0.3435A P:41.21W PF:0.9862 Lamp Flux:4897.06x1 lm		
NAME: ASD Lighting corp	TYPE:LED PANEL	WEIGHT:
SPEC.: ASD-ELP05-24D40CC-STD(4000K)	DIM.: 1213x603mm	SERIAL No.:BLD20171213P04
MFR.: ASD Lighting corp	SUR.:0.558*1.17	Shielding Angle:

Table--1

UNIT: cd

C( DEG) γ (DEG)	0	5	10	15	20	25	30	35	40	45	50	55	60	65	70	75	80	85	90
0	1664	1664	1664	1664	1664	1664	1664	1664	1664	1664	1664	1664	1664	1664	1664	1664	1664	1664	1664
5	1657	1655	1653	1651	1650	1648	1647	1646	1645	1644	1643	1642	1642	1641	1641	1641	1640	1640	1640
10	1636	1632	1629	1626	1623	1621	1620	1619	1618	1617	1617	1616	1616	1616	1617	1617	1617	1617	1617
15	1602	1596	1592	1588	1585	1584	1583	1583	1583	1584	1585	1586	1588	1590	1590	1590	1590	1590	1590
20	1554	1547	1542	1538	1536	1536	1537	1539	1541	1543	1543	1541	1538	1536	1534	1533	1532	1532	1532
25	1493	1485	1479	1477	1476	1478	1481	1483	1481	1476	1473	1471	1470	1470	1470	1470	1470	1470	1470
30	1420	1411	1406	1404	1406	1411	1410	1404	1401	1399	1398	1399	1400	1402	1404	1406	1407	1408	1408
35	1336	1326	1321	1321	1327	1326	1319	1316	1315	1317	1320	1324	1321	1317	1315	1313	1312	1312	1311
40	1240	1229	1226	1229	1232	1224	1221	1222	1226	1228	1223	1219	1217	1216	1215	1215	1215	1215	1215
45	1134	1123	1122	1128	1121	1117	1119	1125	1119	1115	1113	1112	1113	1114	1115	1116	1116	1116	1115
50	1019	1008	1010	1011	1005	1006	1010	1004	1001	1001	1003	1005	1004	1002	999	998	997	996	996
55	896	886	892	885	885	888	882	881	883	885	882	879	877	876	875	875	874	874	874
60	766	758	762	756	761	755	755	759	756	753	751	751	751	751	751	751	752	752	751
65	631	626	625	627	623	625	626	623	622	622	623	624	623	622	621	620	620	619	619
70	495	493	486	485	486	487	488	490	492	491	491	490	490	489	489	488	488	487	487
75	359	350	340	340	343	349	353	357	358	359	359	359	358	358	358	357	357	356	356
80	219	194	196	202	211	218	224	227	228	229	229	228	229	230	230	229	229	229	229
85	76.9	71.8	79.6	87.8	94.6	99.0	103	106	108	109	109	109	109	108	108	108	108	108	108
90	1.22	4.51	5.00	5.98	7.31	8.77	10.1	11.4	12.6	13.7	14.6	15.5	16.2	16.8	17.4	18.1	18.6	18.9	19.0
95	0.00	0.00	0.00	0.00	0.00	0.00	0.00	0.00	0.00	0.00	0.00	0.00	0.00	0.00	0.00	0.00	0.00	0.00	0.00
100	0.00	0.00	0.00	0.00	0.00	0.00	0.00	0.00	0.00	0.00	0.00	0.00	0.00	0.00	0.00	0.00	0.00	0.00	0.00
105	0.00	0.00	0.00	0.00	0.00	0.00	0.00	0.00	0.00	0.00	0.00	0.00	0.00	0.00	0.00	0.00	0.00	0.00	0.00
110	0.00	0.00	0.00	0.00	0.00	0.00	0.00	0.00	0.00	0.00	0.00	0.00	0.00	0.00	0.00	0.00	0.00	0.00	0.00
115	0.00	0.00	0.00	0.00	0.00	0.00	0.00	0.00	0.00	0.00	0.00	0.00	0.00	0.00	0.00	0.00	0.00	0.00	0.00
120	0.00	0.00	0.00	0.00	0.00	0.00	0.00	0.00	0.00	0.00	0.00	0.00	0.00	0.00	0.00	0.00	0.00	0.00	0.00
125	0.00	0.00	0.00	0.00	0.00	0.00	0.00	0.00	0.00	0.00	0.00	0.00	0.00	0.00	0.00	0.00	0.00	0.00	0.00
130	0.00	0.00	0.00	0.00	0.00	0.00	0.00	0.00	0.00	0.00	0.00	0.00	0.00	0.00	0.00	0.00	0.00	0.00	0.00
135	0.00	0.00	0.00	0.00	0.00	0.00	0.00	0.00	0.00	0.00	0.00	0.00	0.00	0.00	0.00	0.00	0.00	0.00	0.00
140	0.00	0.00	0.00	0.00	0.00	0.00	0.00	0.00	0.00	0.00	0.00	0.00	0.00	0.00	0.00	0.00	0.00	0.00	0.00
145	0.00	0.00	0.00	0.00	0.00	0.00	0.00	0.00	0.00	0.00	0.00	0.00	0.00	0.00	0.00	0.00	0.00	0.00	0.00
150	0.00	0.00	0.00	0.00	0.00	0.00	0.00	0.00	0.00	0.00	0.00	0.00	0.00	0.00	0.00	0.00	0.00	0.00	0.00
155	0.00	0.00	0.00	0.00	0.00	0.00	0.00	0.00	0.00	0.00	0.00	0.00	0.00	0.00	0.00	0.00	0.00	0.00	0.00
160	0.00	0.00	0.00	0.00	0.00	0.00	0.00	0.00	0.00	0.00	0.00	0.00	0.00	0.00	0.00	0.00	0.00	0.00	0.00
165	0.00	0.00	0.00	0.00	0.00	0.00	0.00	0.00	0.00	0.00	0.00	0.00	0.00	0.00	0.00	0.00	0.00	0.00	0.00
170	0.00	0.00	0.00	0.00	0.00	0.00	0.00	0.00	0.00	0.00	0.00	0.00	0.00	0.00	0.00	0.00	0.00	0.00	0.00
175	0.00	0.00	0.00	0.00	0.00	0.00	0.00	0.00	0.00	0.00	0.00	0.00	0.00	0.00	0.00	0.00	0.00	0.00	0.00
180	0.00	0.00	0.00	0.00	0.00	0.00	0.00	0.00	0.00	0.00	0.00	0.00	0.00	0.00	0.00	0.00	0.00	0.00	0.00

C Range: 0 - 360DEG  
 C Interval: 5.0DEG  
 Test Speed: HIGH  
 Temperature:22DEG  
 Operators:HUA  
 Test Date:2017-12-13

γ Range: 0 - 180DEG  
 γ Interval: 0.5DEG  
 Test System:EVERFINE GO-2000B\_V1 SYSTEM V2.0.350  
 Humidity:43%  
 Test Distance:12.218m [K=1.0000]  
 Remarks:

LUMINOUS DISTRIBUTION INTENSITY DATA

Test:U:120.1V I:0.3435A P:41.21W PF:0.9862 Lamp Flux:4897.06x1 lm		
NAME: ASD Lighting corp	TYPE:LED PANEL	WEIGHT:
SPEC.: ASD-ELP05-24D40CC-STD(4000K)	DIM.: 1213x603mm	SERIAL No.:BLD20171213P04
MFR.: ASD Lighting corp	SUR.:0.558*1.17	Shielding Angle:

Table--2

UNIT: cd

C(DEG) γ (DEG)	95	100	105	110	115	120	125	130	135	140	145	150	155	160	165	170	175	180	185
0	1664	1664	1664	1664	1664	1664	1664	1664	1664	1664	1664	1664	1664	1664	1664	1664	1664	1664	1664
5	1640	1640	1640	1641	1641	1641	1642	1643	1643	1644	1645	1647	1648	1649	1651	1653	1655	1657	1655
10	1617	1617	1616	1616	1616	1616	1616	1616	1617	1617	1618	1619	1621	1623	1625	1628	1632	1636	1633
15	1590	1590	1590	1590	1589	1587	1586	1584	1583	1582	1582	1582	1583	1585	1587	1591	1596	1601	1597
20	1532	1532	1533	1534	1535	1537	1540	1542	1542	1540	1537	1535	1535	1535	1537	1541	1546	1554	1548
25	1470	1470	1469	1469	1469	1469	1470	1472	1475	1479	1481	1479	1476	1474	1475	1478	1484	1493	1486
30	1408	1407	1405	1404	1402	1400	1398	1397	1397	1399	1402	1408	1408	1404	1402	1404	1410	1420	1412
35	1311	1312	1313	1314	1317	1320	1323	1319	1316	1314	1314	1317	1323	1324	1319	1319	1324	1335	1327
40	1214	1214	1214	1214	1214	1216	1218	1221	1227	1225	1220	1219	1221	1229	1226	1224	1228	1239	1231
45	1115	1115	1115	1114	1112	1111	1110	1111	1113	1117	1124	1117	1115	1118	1124	1119	1121	1133	1125
50	996	996	996	997	999	1001	1001	999	997	998	1001	1008	1004	1001	1007	1006	1006	1018	1010
55	873	873	873	873	873	874	875	878	880	878	877	878	885	881	881	887	883	894	887
60	751	751	750	749	748	747	747	747	748	750	753	750	751	758	753	757	755	765	759
65	619	619	618	618	618	619	619	619	618	616	617	620	618	617	623	619	622	631	626
70	486	486	486	486	485	485	485	486	485	486	484	482	480	478	476	478	487	494	493
75	355	355	355	355	354	354	354	353	353	353	351	348	343	337	333	332	339	359	357
80	228	228	227	227	226	226	225	225	224	223	221	218	213	207	198	189	189	215	222
85	108	107	107	106	106	105	105	105	104	103	101	98.6	94.6	90.3	82.9	73.7	63.8	74.0	91.2
90	18.7	18.2	17.4	16.6	15.8	14.8	13.7	12.5	11.4	10.3	9.34	8.34	7.21	6.02	4.92	4.01	3.59	2.16	1.49
95	0.00	0.00	0.00	0.00	0.00	0.00	0.00	0.00	0.00	0.00	0.00	0.00	0.00	0.00	0.00	0.00	0.00	0.00	0.00
100	0.00	0.00	0.00	0.00	0.00	0.00	0.00	0.00	0.00	0.00	0.00	0.00	0.00	0.00	0.00	0.00	0.00	0.00	0.00
105	0.00	0.00	0.00	0.00	0.00	0.00	0.00	0.00	0.00	0.00	0.00	0.00	0.00	0.00	0.00	0.00	0.00	0.00	0.00
110	0.00	0.00	0.00	0.00	0.00	0.00	0.00	0.00	0.00	0.00	0.00	0.00	0.00	0.00	0.00	0.00	0.00	0.00	0.00
115	0.00	0.00	0.00	0.00	0.00	0.00	0.00	0.00	0.00	0.00	0.00	0.00	0.00	0.00	0.00	0.00	0.00	0.00	0.00
120	0.00	0.00	0.00	0.00	0.00	0.00	0.00	0.00	0.00	0.00	0.00	0.00	0.00	0.00	0.00	0.00	0.00	0.00	0.00
125	0.00	0.00	0.00	0.00	0.00	0.00	0.00	0.00	0.00	0.00	0.00	0.00	0.00	0.00	0.00	0.00	0.00	0.00	0.00
130	0.00	0.00	0.00	0.00	0.00	0.00	0.00	0.00	0.00	0.00	0.00	0.00	0.00	0.00	0.00	0.00	0.00	0.00	0.00
135	0.00	0.00	0.00	0.00	0.00	0.00	0.00	0.00	0.00	0.00	0.00	0.00	0.00	0.00	0.00	0.00	0.00	0.00	0.00
140	0.00	0.00	0.00	0.00	0.00	0.00	0.00	0.00	0.00	0.00	0.00	0.00	0.00	0.00	0.00	0.00	0.00	0.00	0.00
145	0.00	0.00	0.00	0.00	0.00	0.00	0.00	0.00	0.00	0.00	0.00	0.00	0.00	0.00	0.00	0.00	0.00	0.00	0.00
150	0.00	0.00	0.00	0.00	0.00	0.00	0.00	0.00	0.00	0.00	0.00	0.00	0.00	0.00	0.00	0.00	0.00	0.00	0.00
155	0.00	0.00	0.00	0.00	0.00	0.00	0.00	0.00	0.00	0.00	0.00	0.00	0.00	0.00	0.00	0.00	0.00	0.00	0.00
160	0.00	0.00	0.00	0.00	0.00	0.00	0.00	0.00	0.00	0.00	0.00	0.00	0.00	0.00	0.00	0.00	0.00	0.00	0.00
165	0.00	0.00	0.00	0.00	0.00	0.00	0.00	0.00	0.00	0.00	0.00	0.00	0.00	0.00	0.00	0.00	0.00	0.00	0.00
170	0.00	0.00	0.00	0.00	0.00	0.00	0.00	0.00	0.00	0.00	0.00	0.00	0.00	0.00	0.00	0.00	0.00	0.00	0.00
175	0.00	0.00	0.00	0.00	0.00	0.00	0.00	0.00	0.00	0.00	0.00	0.00	0.00	0.00	0.00	0.00	0.00	0.00	0.00
180	0.00	0.00	0.00	0.00	0.00	0.00	0.00	0.00	0.00	0.00	0.00	0.00	0.00	0.00	0.00	0.00	0.00	0.00	0.00

C Range: 0 - 360DEG  
 C Interval: 5.0DEG  
 Test Speed: HIGH  
 Temperature:22DEG  
 Operators:HUA  
 Test Date:2017-12-13

γ Range: 0 - 180DEG  
 γ Interval: 0.5DEG  
 Test System:EVERFINE GO-2000B\_V1 SYSTEM V2.0.350  
 Humidity:43%  
 Test Distance:12.218m [K=1.0000]  
 Remarks:

LUMINOUS DISTRIBUTION INTENSITY DATA

Test:U:120.1V I:0.3435A P:41.21W PF:0.9862 Lamp Flux:4897.06x1 lm		
NAME: ASD Lighting corp	TYPE:LED PANEL	WEIGHT:
SPEC.: ASD-ELP05-24D40CC-STD(4000K)	DIM.: 1213x603mm	SERIAL No.:BLD20171213P04
MFR.: ASD Lighting corp	SUR.:0.558*1.17	Shielding Angle:

Table--3

UNIT: cd

C( DEG) γ (DEG)	190	195	200	205	210	215	220	225	230	235	240	245	250	255	260	265	270	275	280
0	1664	1664	1664	1664	1664	1664	1664	1664	1664	1664	1664	1664	1664	1664	1664	1664	1664	1664	1664
5	1654	1652	1651	1650	1649	1648	1648	1647	1646	1646	1646	1646	1645	1645	1645	1645	1645	1645	1645
10	1630	1628	1626	1625	1624	1624	1624	1624	1624	1624	1625	1625	1626	1626	1627	1627	1627	1627	1627
15	1594	1591	1590	1589	1590	1591	1592	1594	1596	1598	1600	1603	1604	1604	1604	1604	1604	1604	1604
20	1544	1542	1542	1543	1545	1549	1553	1556	1556	1555	1552	1551	1550	1549	1549	1548	1548	1548	1549
25	1482	1482	1483	1486	1492	1495	1494	1490	1488	1487	1486	1486	1486	1487	1487	1488	1488	1488	1487
30	1409	1410	1413	1420	1422	1417	1414	1413	1414	1415	1417	1420	1422	1424	1426	1427	1427	1427	1426
35	1324	1327	1335	1336	1330	1329	1329	1332	1336	1342	1339	1336	1334	1333	1332	1332	1332	1332	1333
40	1230	1236	1241	1234	1233	1235	1241	1244	1239	1237	1236	1235	1235	1236	1236	1237	1237	1237	1236
45	1126	1134	1130	1128	1131	1139	1134	1130	1130	1130	1132	1134	1136	1138	1138	1139	1139	1139	1139
50	1014	1017	1013	1016	1022	1016	1015	1016	1019	1023	1023	1022	1020	1020	1020	1020	1020	1020	1020
55	895	890	892	898	893	893	896	899	898	897	896	896	896	897	897	898	898	898	897
60	764	761	768	763	764	769	768	767	767	768	769	771	772	774	775	776	776	776	775
65	627	633	629	631	634	632	633	635	638	640	640	641	641	641	642	642	642	642	642
70	492	493	496	496	496	499	502	503	503	504	505	506	507	508	508	508	509	509	509
75	358	360	359	362	364	365	367	368	369	371	372	373	374	374	375	375	375	376	375
80	223	223	225	226	229	233	235	236	238	239	240	241	242	243	243	244	244	244	243
85	89.8	91.2	96.1	99.2	103	105	108	109	111	111	112	113	113	113	114	114	114	114	114
90	1.49	1.52	2.28	3.76	5.34	7.09	8.84	10.6	12.2	13.7	15.0	16.1	17.0	17.8	18.5	18.9	19.0	18.6	18.1
95	0.00	0.00	0.00	0.00	0.00	0.00	0.00	0.00	0.00	0.00	0.00	0.00	0.00	0.00	0.00	0.00	0.00	0.00	0.00
100	0.00	0.00	0.00	0.00	0.00	0.00	0.00	0.00	0.00	0.00	0.00	0.00	0.00	0.00	0.00	0.00	0.00	0.00	0.00
105	0.00	0.00	0.00	0.00	0.00	0.00	0.00	0.00	0.00	0.00	0.00	0.00	0.00	0.00	0.00	0.00	0.00	0.00	0.00
110	0.00	0.00	0.00	0.00	0.00	0.00	0.00	0.00	0.00	0.00	0.00	0.00	0.00	0.00	0.00	0.00	0.00	0.00	0.00
115	0.00	0.00	0.00	0.00	0.00	0.00	0.00	0.00	0.00	0.00	0.00	0.00	0.00	0.00	0.00	0.00	0.00	0.00	0.00
120	0.00	0.00	0.00	0.00	0.00	0.00	0.00	0.00	0.00	0.00	0.00	0.00	0.00	0.00	0.00	0.00	0.00	0.00	0.00
125	0.00	0.00	0.00	0.00	0.00	0.00	0.00	0.00	0.00	0.00	0.00	0.00	0.00	0.00	0.00	0.00	0.00	0.00	0.00
130	0.00	0.00	0.00	0.00	0.00	0.00	0.00	0.00	0.00	0.00	0.00	0.00	0.00	0.00	0.00	0.00	0.00	0.00	0.00
135	0.00	0.00	0.00	0.00	0.00	0.00	0.00	0.00	0.00	0.00	0.00	0.00	0.00	0.00	0.00	0.00	0.00	0.00	0.00
140	0.00	0.00	0.00	0.00	0.00	0.00	0.00	0.00	0.00	0.00	0.00	0.00	0.00	0.00	0.00	0.00	0.00	0.00	0.00
145	0.00	0.00	0.00	0.00	0.00	0.00	0.00	0.00	0.00	0.00	0.00	0.00	0.00	0.00	0.00	0.00	0.00	0.00	0.00
150	0.00	0.00	0.00	0.00	0.00	0.00	0.00	0.00	0.00	0.00	0.00	0.00	0.00	0.00	0.00	0.00	0.00	0.00	0.00
155	0.00	0.00	0.00	0.00	0.00	0.00	0.00	0.00	0.00	0.00	0.00	0.00	0.00	0.00	0.00	0.00	0.00	0.00	0.00
160	0.00	0.00	0.00	0.00	0.00	0.00	0.00	0.00	0.00	0.00	0.00	0.00	0.00	0.00	0.00	0.00	0.00	0.00	0.00
165	0.00	0.00	0.00	0.00	0.00	0.00	0.00	0.00	0.00	0.00	0.00	0.00	0.00	0.00	0.00	0.00	0.00	0.00	0.00
170	0.00	0.00	0.00	0.00	0.00	0.00	0.00	0.00	0.00	0.00	0.00	0.00	0.00	0.00	0.00	0.00	0.00	0.00	0.00
175	0.00	0.00	0.00	0.00	0.00	0.00	0.00	0.00	0.00	0.00	0.00	0.00	0.00	0.00	0.00	0.00	0.00	0.00	0.00
180	0.00	0.00	0.00	0.00	0.00	0.00	0.00	0.00	0.00	0.00	0.00	0.00	0.00	0.00	0.00	0.00	0.00	0.00	0.00

C Range: 0 - 360DEG  
 C Interval: 5.0DEG  
 Test Speed: HIGH  
 Temperature:22DEG  
 Operators:HUA  
 Test Date:2017-12-13

γ Range: 0 - 180DEG  
 γ Interval: 0.5DEG  
 Test System:EVERFINE GO-2000B\_V1 SYSTEM V2.0.350  
 Humidity:43%  
 Test Distance:12.218m [K=1.0000]  
 Remarks:

LUMINOUS DISTRIBUTION INTENSITY DATA

Test:U:120.1V I:0.3435A P:41.21W PF:0.9862 Lamp Flux:4897.06x1 lm		
NAME: ASD Lighting corp	TYPE:LED PANEL	WEIGHT:
SPEC.: ASD-ELP05-24D40CC-STD(4000K)	DIM.: 1213x603mm	SERIAL No.:BLD20171213P04
MFR.: ASD Lighting corp	SUR.:0.558*1.17	Shielding Angle:

Table--4

UNIT: cd

C(DEC) γ (DEC)	285	290	295	300	305	310	315	320	325	330	335	340	345	350	355				
0	1664	1664	1664	1664	1664	1664	1664	1664	1664	1664	1664	1664	1664	1664	1664				
5	1645	1646	1646	1646	1646	1647	1647	1648	1648	1649	1650	1651	1652	1654	1655				
10	1626	1626	1626	1625	1625	1624	1624	1624	1624	1625	1626	1627	1628	1630	1633				
15	1604	1605	1603	1601	1599	1596	1594	1593	1591	1590	1590	1591	1592	1594	1597				
20	1549	1550	1551	1553	1556	1557	1557	1554	1550	1546	1544	1543	1543	1545	1549				
25	1487	1487	1486	1487	1487	1489	1491	1495	1496	1493	1488	1484	1483	1483	1487				
30	1424	1422	1420	1418	1416	1414	1414	1415	1418	1424	1422	1415	1411	1410	1413				
35	1333	1334	1336	1339	1342	1337	1333	1330	1330	1332	1338	1337	1329	1326	1328				
40	1236	1236	1236	1236	1237	1240	1245	1242	1237	1235	1236	1243	1238	1232	1232				
45	1139	1137	1135	1133	1131	1131	1131	1134	1140	1132	1129	1132	1137	1128	1126				
50	1021	1021	1023	1025	1024	1021	1018	1016	1018	1023	1018	1015	1020	1017	1012				
55	897	897	897	897	898	900	901	898	895	894	899	894	893	898	890				
60	774	773	772	770	769	768	769	770	772	767	765	769	763	768	761				
65	642	642	642	641	641	639	637	635	635	636	634	631	633	629	629				
70	508	508	507	507	506	505	504	503	500	498	498	497	494	493	495				
75	375	375	374	373	372	371	369	368	366	364	362	359	361	359	359				
80	243	243	242	241	240	239	237	235	233	229	226	224	222	223	221				
85	113	113	112	112	111	110	109	108	106	103	101	96.8	92.0	90.1	91.7				
90	17.3	16.5	15.6	14.4	13.0	11.6	10.1	8.51	6.91	5.43	3.95	2.64	1.58	1.42	1.43				
95	0.00	0.00	0.00	0.00	0.00	0.00	0.00	0.00	0.00	0.00	0.00	0.00	0.00	0.00	0.00				
100	0.00	0.00	0.00	0.00	0.00	0.00	0.00	0.00	0.00	0.00	0.00	0.00	0.00	0.00	0.00				
105	0.00	0.00	0.00	0.00	0.00	0.00	0.00	0.00	0.00	0.00	0.00	0.00	0.00	0.00	0.00				
110	0.00	0.00	0.00	0.00	0.00	0.00	0.00	0.00	0.00	0.00	0.00	0.00	0.00	0.00	0.00				
115	0.00	0.00	0.00	0.00	0.00	0.00	0.00	0.00	0.00	0.00	0.00	0.00	0.00	0.00	0.00				
120	0.00	0.00	0.00	0.00	0.00	0.00	0.00	0.00	0.00	0.00	0.00	0.00	0.00	0.00	0.00				
125	0.00	0.00	0.00	0.00	0.00	0.00	0.00	0.00	0.00	0.00	0.00	0.00	0.00	0.00	0.00				
130	0.00	0.00	0.00	0.00	0.00	0.00	0.00	0.00	0.00	0.00	0.00	0.00	0.00	0.00	0.00				
135	0.00	0.00	0.00	0.00	0.00	0.00	0.00	0.00	0.00	0.00	0.00	0.00	0.00	0.00	0.00				
140	0.00	0.00	0.00	0.00	0.00	0.00	0.00	0.00	0.00	0.00	0.00	0.00	0.00	0.00	0.00				
145	0.00	0.00	0.00	0.00	0.00	0.00	0.00	0.00	0.00	0.00	0.00	0.00	0.00	0.00	0.00				
150	0.00	0.00	0.00	0.00	0.00	0.00	0.00	0.00	0.00	0.00	0.00	0.00	0.00	0.00	0.00				
155	0.00	0.00	0.00	0.00	0.00	0.00	0.00	0.00	0.00	0.00	0.00	0.00	0.00	0.00	0.00				
160	0.00	0.00	0.00	0.00	0.00	0.00	0.00	0.00	0.00	0.00	0.00	0.00	0.00	0.00	0.00				
165	0.00	0.00	0.00	0.00	0.00	0.00	0.00	0.00	0.00	0.00	0.00	0.00	0.00	0.00	0.00				
170	0.00	0.00	0.00	0.00	0.00	0.00	0.00	0.00	0.00	0.00	0.00	0.00	0.00	0.00	0.00				
175	0.00	0.00	0.00	0.00	0.00	0.00	0.00	0.00	0.00	0.00	0.00	0.00	0.00	0.00	0.00				
180	0.00	0.00	0.00	0.00	0.00	0.00	0.00	0.00	0.00	0.00	0.00	0.00	0.00	0.00	0.00				

C Range: 0 - 360DEG  
 C Interval: 5.0DEG  
 Test Speed: HIGH  
 Temperature:22DEG  
 Operators:HUA  
 Test Date:2017-12-13

γ Range: 0 - 180DEG  
 γ Interval: 0.5DEG  
 Test System:EVERFINE GO-2000B\_V1 SYSTEM V2.0.350  
 Humidity:43%  
 Test Distance:12.218m [K=1.0000]  
 Remarks: