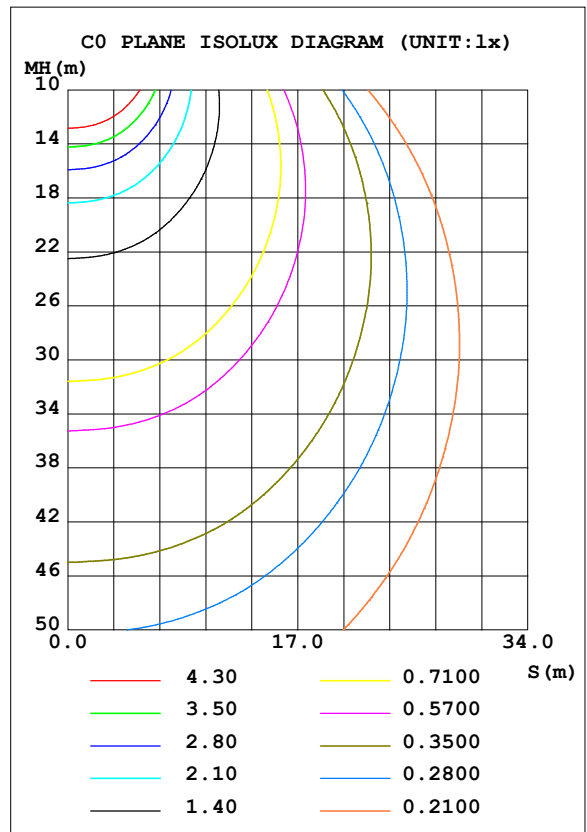
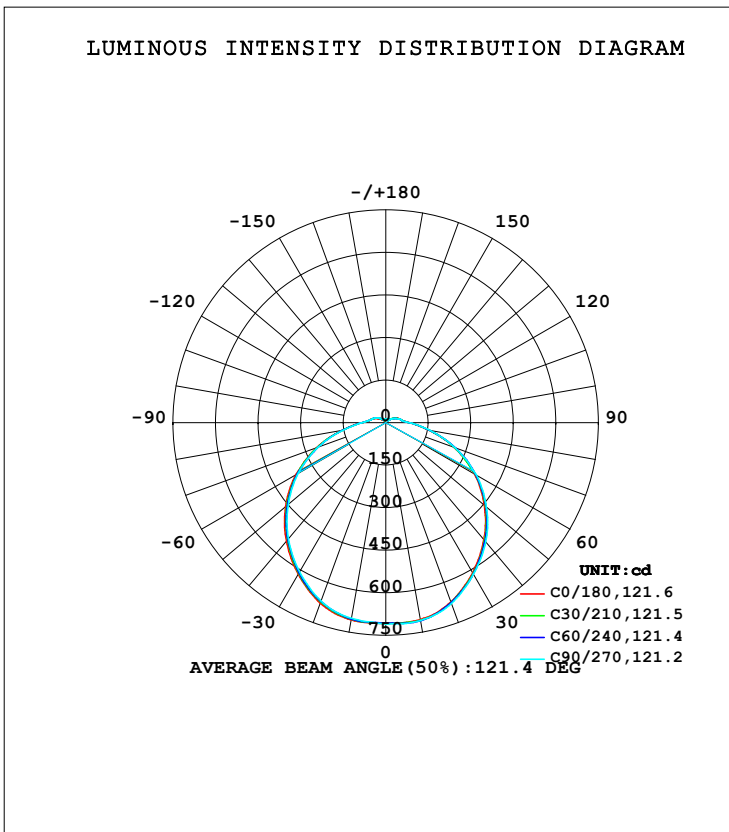


LUMINAIRE PHOTOMETRIC TEST REPORT

Test:U:119.96V I:0.3839A P:41.889W PF:0.9092 Freq:60.00Hz Lamp Flux:2544.94x1 lm		
NAME: ASD lighting Corp	TYPE:	WEIGHT:
SPEC.:ASD-LFC-HN-20D42-AC-4000K	DIM.:	SERIAL No.:
MFR.: ASD lighting Corp	SUR.:0.43*0.39	Shielding Angle:

DATA OF LAMP		PHOTOMETRIC DATA Eff: 60.75 lm/W			
MODEL	ASD-LFC-HN-20D42-AC	I _{max} (cd)	711.1	S/MH (C0/180)	1.29
NOMINAL POWER (W)	--	LOR (%)	100.0	S/MH (C90/270)	1.27
RATED VOLTAGE (V)	--	TOTAL FLUX (lm)	2544.9	<input type="checkbox"/> UP, DN (C0-180)	4.2,46.1
NOMINAL FLUX (lm)	2544.94	CIE CLASS	DIRECT	<input type="checkbox"/> UP, DN (C180-360)	4.3,45.4
LAMPS INSIDE	1	<input type="checkbox"/> up (%)	8.5	CIBSE SHR NOM	1.50
TEST VOLTAGE (V)	--	<input type="checkbox"/> down (%)	91.5	CIBSE SHR MAX	1.50



C Range: 0 - 360DEG
 C Interval: 30.0DEG
 Test Speed: HIGH
 Temperature:25.3DEG
 Operators:admin
 Test Date:2022-03-16

Range: 0 - 180DEG
 Interval: 1.0DEG
 Test System:EVERFINE GO-2000B_V1 SYSTEM V2.00.411
 Humidity:65.0%
 Test Distance:8.780m [K=1.0000]
 Remarks:

ZONAL FLUX DIAGRAM

ZONAL FLUX DIAGRAM:

mm	C0	C45	C90	C135	C180	C225	C270	C315	mm	□ zone	□ total	%lum, lamp
10	704.8	708.1	708.0	709.1	706.0	703.8	700.5	702.7	0- 10	67.53	67.53	2.65,2.65
20	672.5	674.4	678.2	677.7	677.0	671.7	669.3	669.4	10- 20	195.8	263.4	10.3,10.3
30	612.2	616.2	618.0	620.4	617.4	612.8	607.7	609.1	20- 30	297.9	561.2	22.1,22.1
40	538.3	543.2	548.6	548.7	545.0	538.5	534.3	534.9	30- 40	362.6	923.8	36.3,36.3
50	454.3	460.1	463.6	465.3	461.2	454.8	448.9	450.5	40- 50	386.7	1311	51.5,51.5
60	361.2	364.8	369.5	369.4	366.4	361.0	356.2	356.2	50- 60	367.8	1678	65.9,65.9
70	257.6	260.1	260.7	263.1	259.6	255.8	253.4	253.4	60- 70	307.3	1986	78,78
80	153.9	155.6	158.1	158.3	156.4	154.3	151.9	152.5	70- 80	217.6	2203	86.6,86.6
90	82.89	81.88	81.73	82.36	83.00	83.54	83.06	82.59	80- 90	125.6	2329	91.5,91.5
100	55.93	56.12	56.68	57.25	56.21	56.44	56.66	56.12	90-100	72.84	2402	94.4,94.4
110	45.64	43.84	42.97	43.46	44.21	45.39	45.41	45.00	100-110	53.61	2455	96.5,96.5
120	29.17	30.46	28.90	29.73	27.19	32.64	33.13	32.74	110-120	37.51	2493	97.9,97.9
130	19.39	19.35	18.32	18.53	17.23	21.21	22.53	22.15	120-130	22.69	2515	98.8,98.8
140	12.91	11.91	11.21	11.30	10.93	13.11	14.35	14.14	130-140	12.48	2528	99.3,99.3
150	11.19	11.04	11.21	11.20	10.42	10.36	10.63	10.51	140-150	7.030	2535	99.6,99.6
160	12.51	12.25	12.48	12.43	12.05	11.66	12.19	11.91	150-160	5.300	2540	99.8,99.8
170	12.70	12.56	13.02	12.76	12.64	12.75	13.11	12.74	160-170	3.565	2544	100,100
180	11.88	11.80	11.92	11.71	11.89	11.78	11.93	11.72	170-180	1.173	2545	100,100
DEG	LUMINOUS INTENSITY:cd									UNIT:lm		

Conical surface Flux(90deg): 1116.8 lm

%lum = 43.9%

%lamp = 43.9%

Conical surface Flux(120deg): 1678.3 lm

%lum = 65.9%

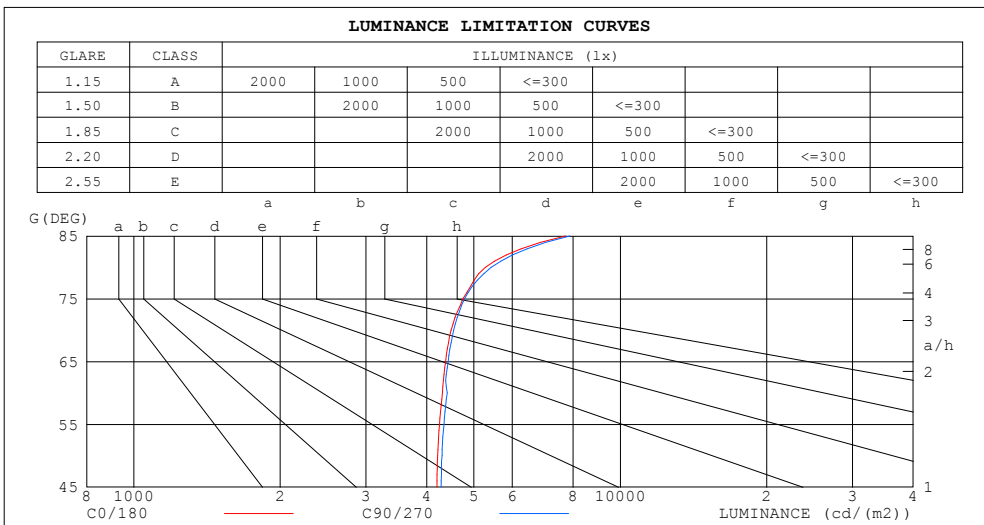
%lamp = 65.9%

C Range: 0 - 360DEG
 C Interval: 30.0DEG
 Test Speed: HIGH
 Temperature:25.3DEG
 Operators:admin
 Test Date:2022-03-16

□ Range: 0 - 180DEG
 □ Interval: 1.0DEG
 Test System:EVERFINE GO-2000B_V1 SYSTEM V2.00.411
 Humidity:65.0%
 Test Distance:8.780m [K=1.0000]
 Remarks:

LUMINANCE LIMITATION CURVES

Test:U:119.96V I:0.3839A P:41.889W PF:0.9092 Freq:60.00Hz Lamp Flux:2544.94x1 lm		
NAME: ASD lighting Corp	TYPE:	WEIGHT:
SPEC.:ASD-LFC-HN-20D42-AC-4000K	DIM.:	SERIAL No.:
MFR.: ASD lighting Corp	SUR.:0.43*0.39	Shielding Angle:



LUMINANCE cd/(m2)		
G (DEG)	C0/180	C90/270
85	7724	7881
80	5284	5429
75	4751	4787
70	4491	4546
65	4376	4426
60	4308	4407
55	4250	4340
50	4215	4301
45	4200	4282

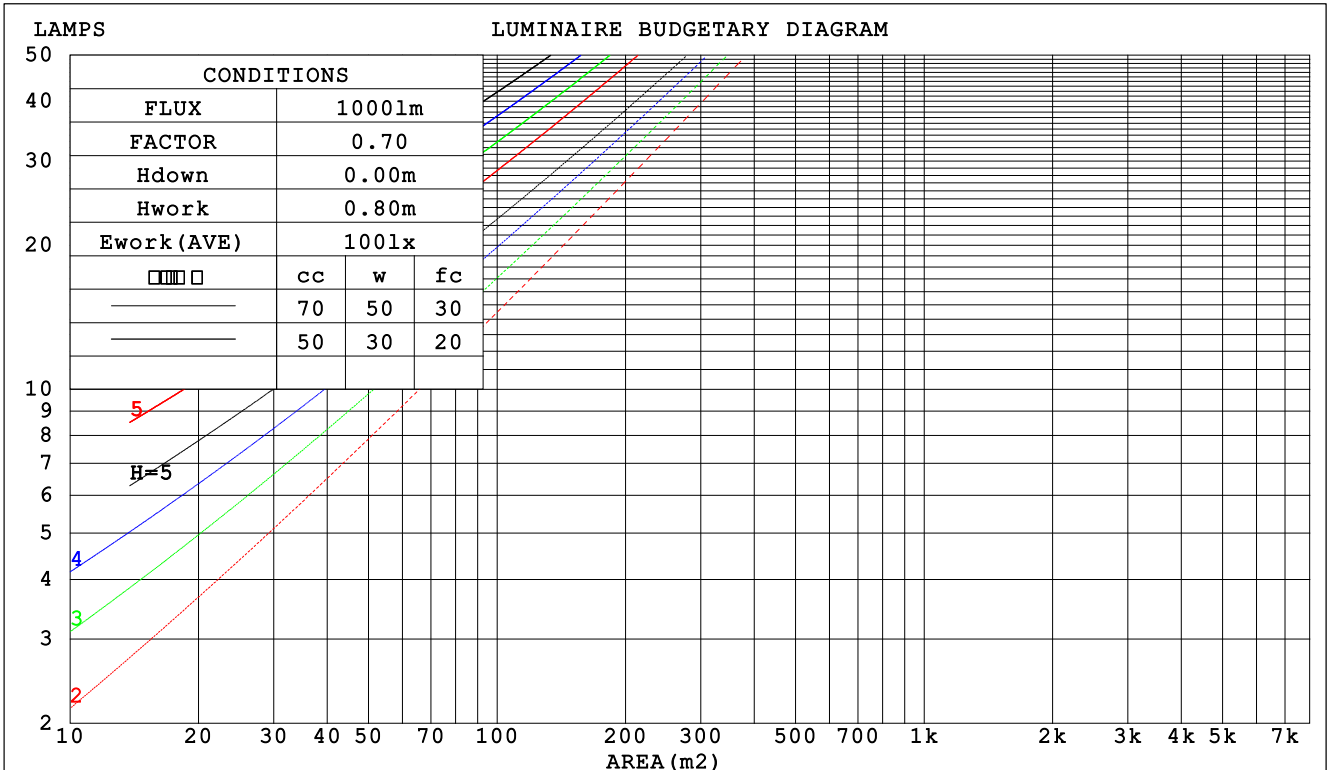
C Range: 0 - 360DEG
 C Interval: 30.0DEG
 Test Speed: HIGH
 Temperature:25.3DEG
 Operators:admin
 Test Date:2022-03-16

Range: 0 - 180DEG
 Interval: 1.0DEG
 Test System:EVERFINE GO-2000B_V1 SYSTEM V2.00.411
 Humidity:65.0%
 Test Distance:8.780m [K=1.0000]
 Remarks:

CU AND LUMINAIRE BUDGETARY ESTIMATE DIAGRAM

Test:U:119.96V I:0.3839A P:41.889W PF:0.9092 Freq:60.00Hz Lamp Flux:2544.94x1 lm		
NAME: ASD lighting Corp	TYPE:	WEIGHT:
SPEC.:ASD-LFC-HN-20D42-AC-4000K	DIM.:	SERIAL No.:
MFR.: ASD lighting Corp	SUR.:0.43*0.39	Shielding Angle:

□cc	80%			70%			50%			30%			10%			0
□w	50%	30%	10%	50%	30%	10%	50%	30%	10%	50%	30%	10%	50%	30%	10%	0
□fc	20%			20%			20%			20%			20%			0
RCR	RCR:Room Cavity Ratio						Coefficients of Utilization(CU)									
0.0	1.17	1.17	1.17	1.13	1.13	1.13	1.06	1.06	1.06	1.00	1.00	1.00	.94	.94	.94	.92
1.0	.00	.95	.90	.96	.92	.88	.91	.87	.84	.85	.82	.80	.80	.78	.76	.73
2.0	.86	.78	.72	.83	.76	.71	.78	.73	.68	.74	.69	.65	.69	.66	.62	.59
3.0	.75	.66	.59	.73	.65	.58	.68	.62	.56	.64	.59	.54	.61	.56	.52	.49
4.0	.66	.57	.50	.64	.56	.49	.60	.53	.47	.57	.51	.46	.54	.49	.44	.42
5.0	.59	.49	.42	.57	.48	.42	.54	.46	.41	.51	.45	.39	.48	.43	.38	.36
6.0	.53	.43	.37	.51	.43	.36	.49	.41	.35	.46	.39	.34	.44	.38	.33	.31
7.0	.48	.39	.32	.46	.38	.32	.44	.37	.31	.42	.35	.30	.40	.34	.30	.27
8.0	.43	.35	.29	.42	.34	.28	.40	.33	.28	.38	.32	.27	.37	.31	.26	.24
9.0	.40	.31	.26	.39	.31	.25	.37	.30	.25	.35	.29	.24	.34	.28	.24	.22
10.0	.37	.29	.23	.36	.28	.23	.34	.27	.22	.33	.26	.22	.31	.26	.22	.20



C Range: 0 - 360DEG
 C Interval: 30.0DEG
 Test Speed: HIGH
 Temperature:25.3DEG
 Operators:admin
 Test Date:2022-03-16

□ Range: 0 - 180DEG
 □ Interval: 1.0DEG
 Test System:EVERFINE GO-2000B_V1 SYSTEM V2.00.411
 Humidity:65.0%
 Test Distance:8.780m [K=1.0000]
 Remarks:

WEC AND CCEC

Test:U:119.96V I:0.3839A P:41.889W PF:0.9092 Freq:60.00Hz Lamp Flux:2544.94x1 lm		
NAME: ASD lighting Corp	TYPE:	WEIGHT:
SPEC.:ASD-LFC-HN-20D42-AC-4000K	DIM.:	SERIAL No.:
MFR.: ASD lighting Corp	SUR.:0.43*0.39	Shielding Angle:

<input type="checkbox"/> cc	80%	70%	50%	30%	10%	0
<input type="checkbox"/> w	50% 30% 10%	50% 30% 10%	50% 30% 10%	50% 30% 10%	50% 30% 10%	0
<input type="checkbox"/> fc	20%	20%	20%	20%	20%	0
RCR	RCR:Room Cavity Ratio		Wall Exitance Coefficients (WEC)			
0.0						
1.0	.352 .200 .063	.342 .195 .062	.324 .186 .059	.307 .177 .057	.292 .169 .055	
2.0	.316 .173 .053	.307 .169 .052	.291 .162 .050	.276 .155 .048	.262 .148 .047	
3.0	.286 .152 .046	.278 .149 .045	.263 .143 .043	.249 .137 .042	.237 .131 .041	
4.0	.260 .135 .040	.253 .132 .039	.240 .127 .038	.227 .122 .037	.216 .117 .036	
5.0	.238 .121 .035	.232 .119 .035	.220 .114 .034	.209 .110 .033	.198 .106 .032	
6.0	.219 .110 .031	.213 .108 .031	.203 .104 .030	.193 .100 .029	.183 .096 .029	
7.0	.203 .100 .028	.198 .098 .028	.188 .095 .027	.179 .092 .027	.170 .088 .026	
8.0	.189 .092 .026	.184 .091 .026	.175 .087 .025	.167 .084 .024	.159 .082 .024	
9.0	.176 .085 .024	.172 .084 .024	.164 .081 .023	.156 .078 .022	.149 .076 .022	
10.0	.165 .079 .022	.161 .078 .022	.154 .075 .021	.147 .073 .021	.140 .071 .020	

<input type="checkbox"/> cc	80%	70%	50%	30%	10%	0
<input type="checkbox"/> w	50% 30% 10%	50% 30% 10%	50% 30% 10%	50% 30% 10%	50% 30% 10%	0
<input type="checkbox"/> fc	20%	20%	20%	20%	20%	0
RCR	RCR:Room Cavity Ratio		Ceiling Cavity Exitance Coefficients (CCEC)			
0.0	.255 .255 .255	.218 .218 .218	.149 .149 .149	.086 .086 .086	.027 .027 .027	
1.0	.249 .221 .196	.213 .190 .169	.145 .131 .117	.084 .076 .068	.027 .024 .022	
2.0	.241 .197 .161	.207 .170 .139	.142 .118 .097	.082 .068 .057	.026 .022 .019	
3.0	.234 .180 .138	.200 .156 .120	.137 .108 .084	.079 .063 .050	.026 .021 .016	
4.0	.226 .168 .123	.194 .145 .107	.133 .101 .075	.077 .059 .045	.025 .019 .015	
5.0	.218 .157 .113	.187 .136 .098	.129 .095 .069	.075 .056 .041	.024 .018 .014	
6.0	.211 .149 .105	.181 .129 .092	.125 .091 .065	.073 .053 .039	.023 .017 .013	
7.0	.204 .143 .100	.175 .124 .087	.121 .087 .061	.070 .051 .037	.023 .017 .012	
8.0	.197 .137 .095	.170 .119 .083	.117 .083 .059	.068 .049 .035	.022 .016 .012	
9.0	.191 .132 .092	.165 .115 .080	.114 .081 .057	.066 .048 .034	.022 .016 .011	
10.0	.185 .128 .090	.160 .111 .078	.111 .078 .056	.065 .046 .033	.021 .015 .011	

C Range: 0 - 360DEG
 C Interval: 30.0DEG
 Test Speed: HIGH
 Temperature:25.3DEG
 Operators:admin
 Test Date:2022-03-16

Range: 0 - 180DEG
 Interval: 1.0DEG
 Test System:EVERFINE GO-2000B_V1 SYSTEM V2.00.411
 Humidity:65.0%
 Test Distance:8.780m [K=1.0000]
 Remarks:

UGR(Unified Glare Rating) Table

Test:U:119.96V I:0.3839A P:41.889W PF:0.9092 Freq:60.00Hz Lamp Flux:2544.94x1 lm										
NAME: ASD lighting Corp					TYPE:			WEIGHT:		
SPEC.:ASD-LFC-HN-20D42-AC-4000K					DIM.:			SERIAL No.:		
MFR.: ASD lighting Corp					SUR.:0.43*0.39			Shielding Angle:		
ceiling/cavity	0.7	0.7	0.5	0.5	0.3	0.7	0.7	0.5	0.5	0.3
walls	0.5	0.3	0.5	0.3	0.3	0.5	0.3	0.5	0.3	0.3
working plane	0.2	0.2	0.2	0.2	0.2	0.2	0.2	0.2	0.2	0.2
Room dimensions	Viewed crosswise					Viewed endwise				
x = 2H y = 2H	17.4	18.9	17.8	19.2	19.6	17.5	19.0	17.9	19.3	19.7
3H	19.3	20.7	19.7	21.0	21.5	19.4	20.7	19.8	21.1	21.5
4H	20.2	21.5	20.6	21.9	22.3	20.3	21.6	20.7	22.0	22.4
6H	21.1	22.3	21.5	22.7	23.1	21.1	22.3	21.6	22.8	23.2
8H	21.5	22.6	21.9	23.1	23.5	21.6	22.7	22.0	23.2	23.6
12H	21.9	23.0	22.4	23.5	24.0	22.0	23.1	22.5	23.6	24.1
4H 2H	18.1	19.4	18.6	19.8	20.2	18.2	19.5	18.6	19.9	20.3
3H	20.2	21.3	20.7	21.8	22.3	20.3	21.4	20.7	21.8	22.3
4H	21.2	22.3	21.7	22.8	23.3	21.3	22.3	21.8	22.8	23.3
6H	22.3	23.2	22.8	23.7	24.2	22.3	23.3	22.9	23.8	24.3
8H	22.8	23.6	23.3	24.1	24.7	22.8	23.7	23.4	24.2	24.8
12H	23.3	24.1	23.9	24.6	25.2	23.4	24.2	24.0	24.7	25.3
8H 4H	21.6	22.5	22.2	23.0	23.6	21.7	22.6	22.2	23.1	23.7
6H	22.9	23.6	23.5	24.2	24.8	23.0	23.7	23.5	24.2	24.8
8H	23.6	24.2	24.1	24.8	25.4	23.6	24.3	24.2	24.8	25.5
12H	24.3	24.9	24.9	25.4	26.1	24.4	24.9	25.0	25.5	26.2
12H 4H	21.7	22.5	22.3	23.0	23.6	21.8	22.6	22.3	23.1	23.7
6H	23.0	23.7	23.6	24.3	24.9	23.1	23.7	23.7	24.3	24.9
8H	23.8	24.4	24.4	24.9	25.6	23.9	24.4	24.5	25.0	25.7
Variations with the observer position at spacings:										
S = 1.0H	+ 0.1 / - 0.1					+ 0.1 / - 0.1				
1.5H	+ 0.2 / - 0.3					+ 0.2 / - 0.3				
2.0H	+ 0.2 / - 0.4					+ 0.2 / - 0.3				

CIE Pub.117, 2545 lm Total Lamp Luminous Flux Corrected (8log(F/F0) = 3.2)
 Area: 0.1677 m2

C Range: 0 - 360DEG
 C Interval: 30.0DEG
 Test Speed: HIGH
 Temperature:25.3DEG
 Operators:admin
 Test Date:2022-03-16

Range: 0 - 180DEG
 Interval: 1.0DEG
 Test System:EVERFINE GO-2000B_V1 SYSTEM V2.00.411
 Humidity:65.0%
 Test Distance:8.780m [K=1.0000]
 Remarks:

UTILIZATION FACTORS TABLE

Test:U:119.96V I:0.3839A P:41.889W PF:0.9092 Freq:60.00Hz Lamp Flux:2544.94x1 lm		
NAME: ASD lighting Corp	TYPE:	WEIGHT:
SPEC.:ASD-LFC-HN-20D42-AC-4000K	DIM.:	SERIAL No.:
MFR.: ASD lighting Corp	SUR.:0.43*0.39	Shielding Angle:

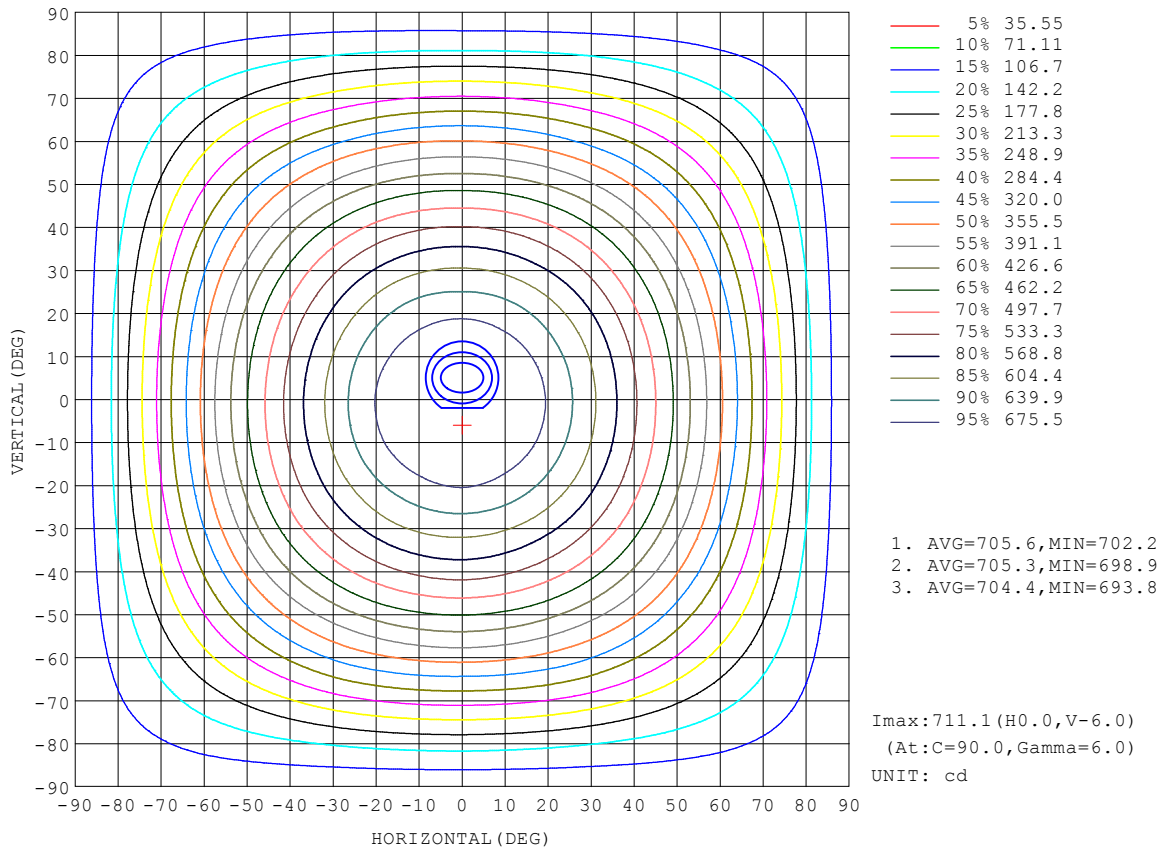
REFLECTANCE										
Ceiling	0.8	0.8	0.8	0.7	0.7	0.7	0.5	0.5	0.5	0
Walls	0.7	0.5	0.3	0.7	0.5	0.3	0.7	0.5	0.3	0
Working plane	0.2	0.2	0.2	0.2	0.2	0.2	0.2	0.2	0.2	0
ROOM INDEX	UTILIZATION FACTORS (PERCENT) $k(RI) \times RCR = 5$									
k = 0.60	52	40	33	52	40	33	50	39	33	26
0.80	62	50	42	61	49	42	59	48	41	34
1.00	70	58	50	69	57	50	66	58	49	41
1.25	77	65	58	75	64	57	72	63	56	47
1.50	82	71	63	80	70	62	76	67	61	52
2.00	89	79	72	87	78	71	82	75	69	59
2.50	94	84	77	91	83	76	86	79	73	63
3.00	97	89	82	94	87	81	89	83	78	67
4.00	102	95	89	98	92	87	93	88	83	72
5.00	104	98	93	101	96	91	95	91	87	75
ROOM INDEX	UF(total)									Direct
According to DIN EN 13032-2 2004			Suspended				SHRNOM = 1.25			

C Range: 0 - 360DEG
 C Interval: 30.0DEG
 Test Speed: HIGH
 Temperature:25.3DEG
 Operators:admin
 Test Date:2022-03-16

Range: 0 - 180DEG
 Interval: 1.0DEG
 Test System:EVERFINE GO-2000B_V1 SYSTEM V2.00.411
 Humidity:65.0%
 Test Distance:8.780m [K=1.0000]
 Remarks:

ISOCANDELA DIAGRAM

Test:U:119.96V I:0.3839A P:41.889W PF:0.9092 Freq:60.00Hz Lamp Flux:2544.94x1 lm		
NAME: ASD lighting Corp	TYPE:	WEIGHT:
SPEC.:ASD-LFC-HN-20D42-AC-4000K	DIM.:	SERIAL No.:
MFR.: ASD lighting Corp	SUR.:0.43*0.39	Shielding Angle:

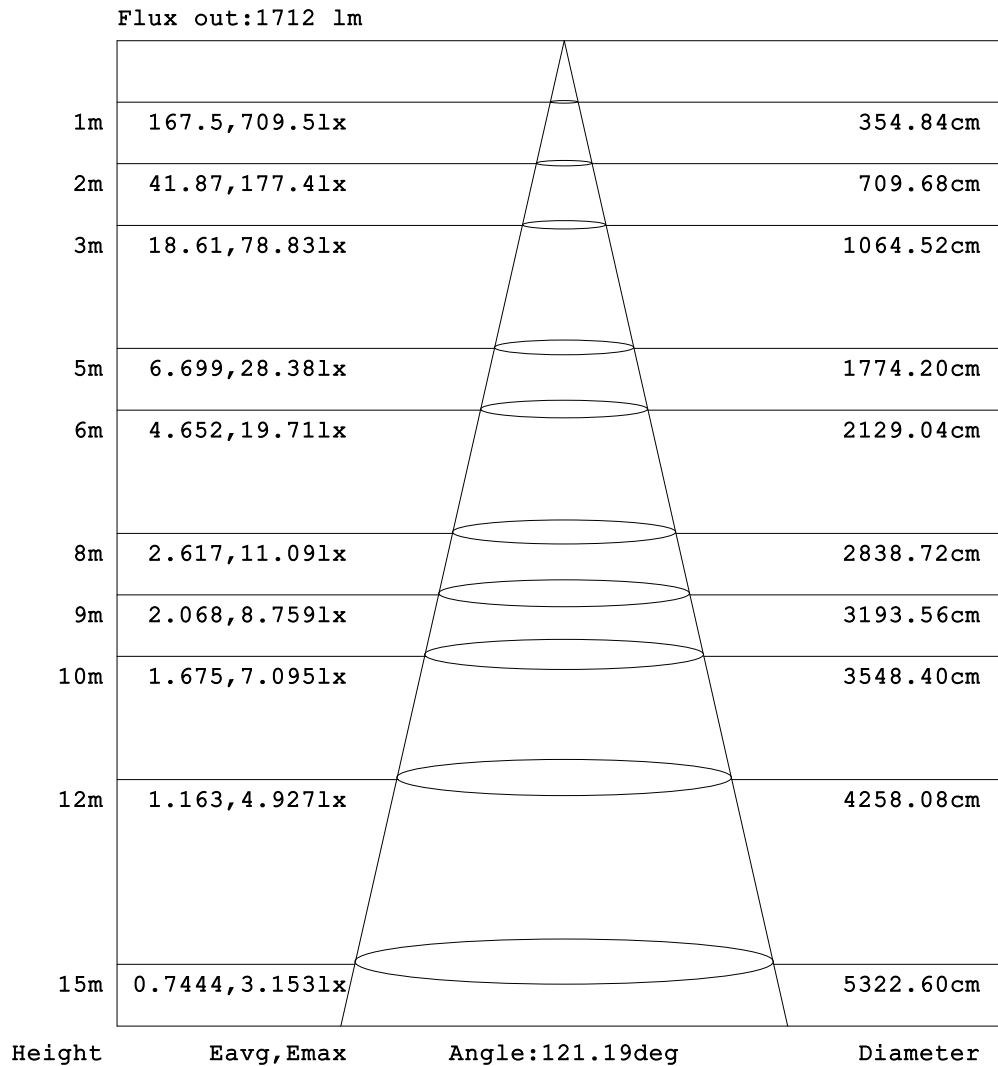


C Range: 0 - 360DEG
 C Interval: 30.0DEG
 Test Speed: HIGH
 Temperature:25.3DEG
 Operators:admin
 Test Date:2022-03-16

Range: 0 - 180DEG
 Interval: 1.0DEG
 Test System:EVERFINE GO-2000B_V1 SYSTEM V2.00.411
 Humidity:65.0%
 Test Distance:8.780m [K=1.0000]
 Remarks:

AAI Figure

Test:U:119.96V I:0.3839A P:41.889W PF:0.9092 Freq:60.00Hz Lamp Flux:2544.94x1 lm		
NAME: ASD lighting Corp	TYPE:	WEIGHT:
SPEC.:ASD-LFC-HN-20D42-AC-4000K	DIM.:	SERIAL No.:
MFR.: ASD lighting Corp	SUR.:0.43*0.39	Shielding Angle:



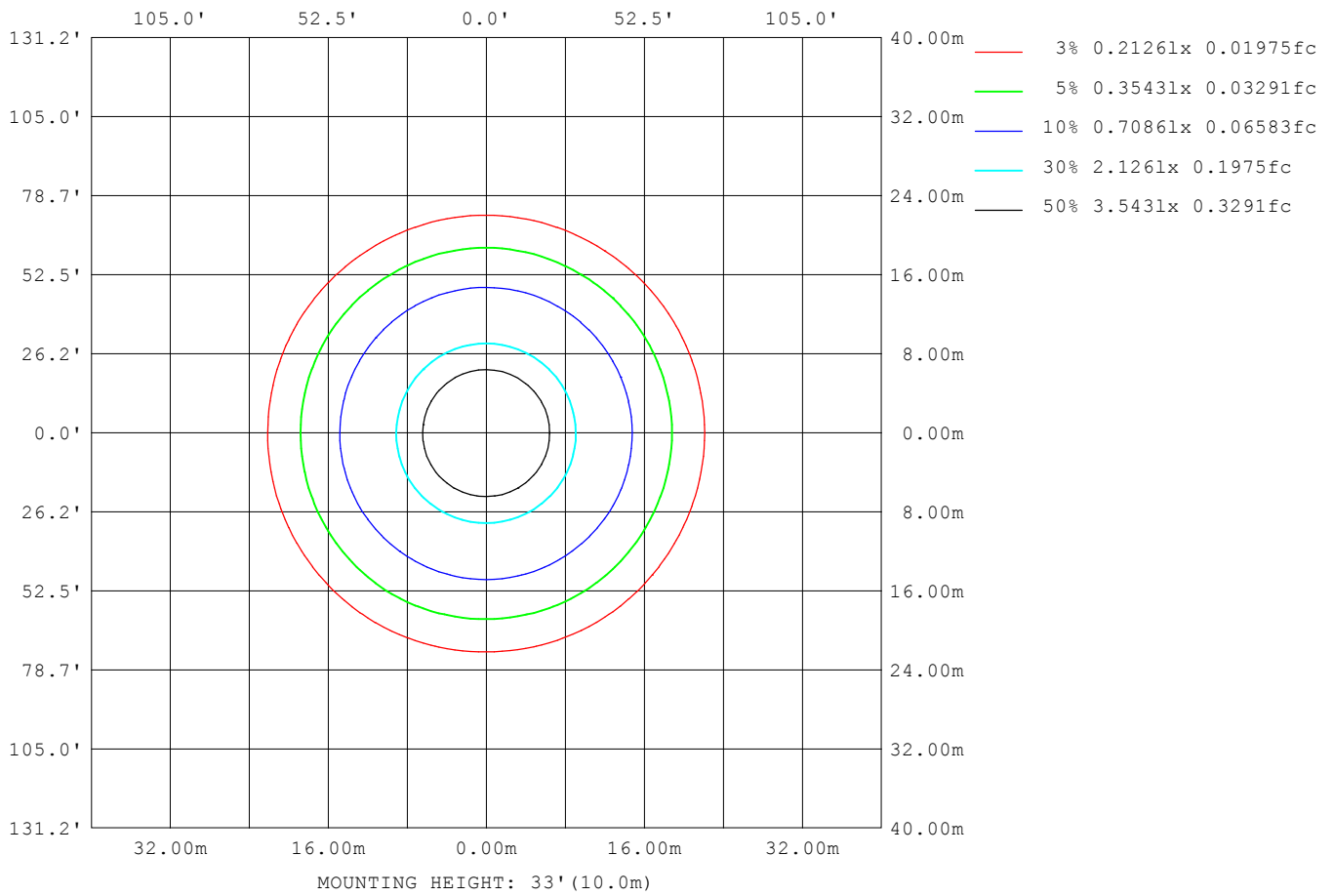
Note:The Curves indicate the illuminated area and the average illumination when the luminaire is at different distance.

C Range: 0 - 360DEG
 C Interval: 30.0DEG
 Test Speed: HIGH
 Temperature:25.3DEG
 Operators:admin
 Test Date:2022-03-16

Range: 0 - 180DEG
 Interval: 1.0DEG
 Test System:EVERFINE GO-2000B_V1 SYSTEM V2.00.411
 Humidity:65.0%
 Test Distance:8.780m [K=1.0000]
 Remarks:

ISOLUX DIAGRAM

Test:U:119.96V I:0.3839A P:41.889W PF:0.9092 Freq:60.00Hz Lamp Flux:2544.94x1 lm		
NAME: ASD lighting Corp	TYPE:	WEIGHT:
SPEC.:ASD-LFC-HN-20D42-AC-4000K	DIM.:	SERIAL No.:
MFR.: ASD lighting Corp	SUR.:0.43*0.39	Shielding Angle:



C Range: 0 - 360DEG
 C Interval: 30.0DEG
 Test Speed: HIGH
 Temperature:25.3DEG
 Operators:admin
 Test Date:2022-03-16

Range: 0 - 180DEG
 Interval: 1.0DEG
 Test System:EVERFINE GO-2000B_V1 SYSTEM V2.00.411
 Humidity:65.0%
 Test Distance:8.780m [K=1.0000]
 Remarks:

LED Avg.L Report

Test:U:119.96V I:0.3839A P:41.889W PF:0.9092 Freq:60.00Hz Lamp Flux:2544.94x1 lm		
NAME: ASD lighting Corp	TYPE:	WEIGHT:
SPEC.:ASD-LFC-HN-20D42-AC-4000K	DIM.:	SERIAL No.:
MFR.: ASD lighting Corp	SUR.:0.43*0.39	Shielding Angle:

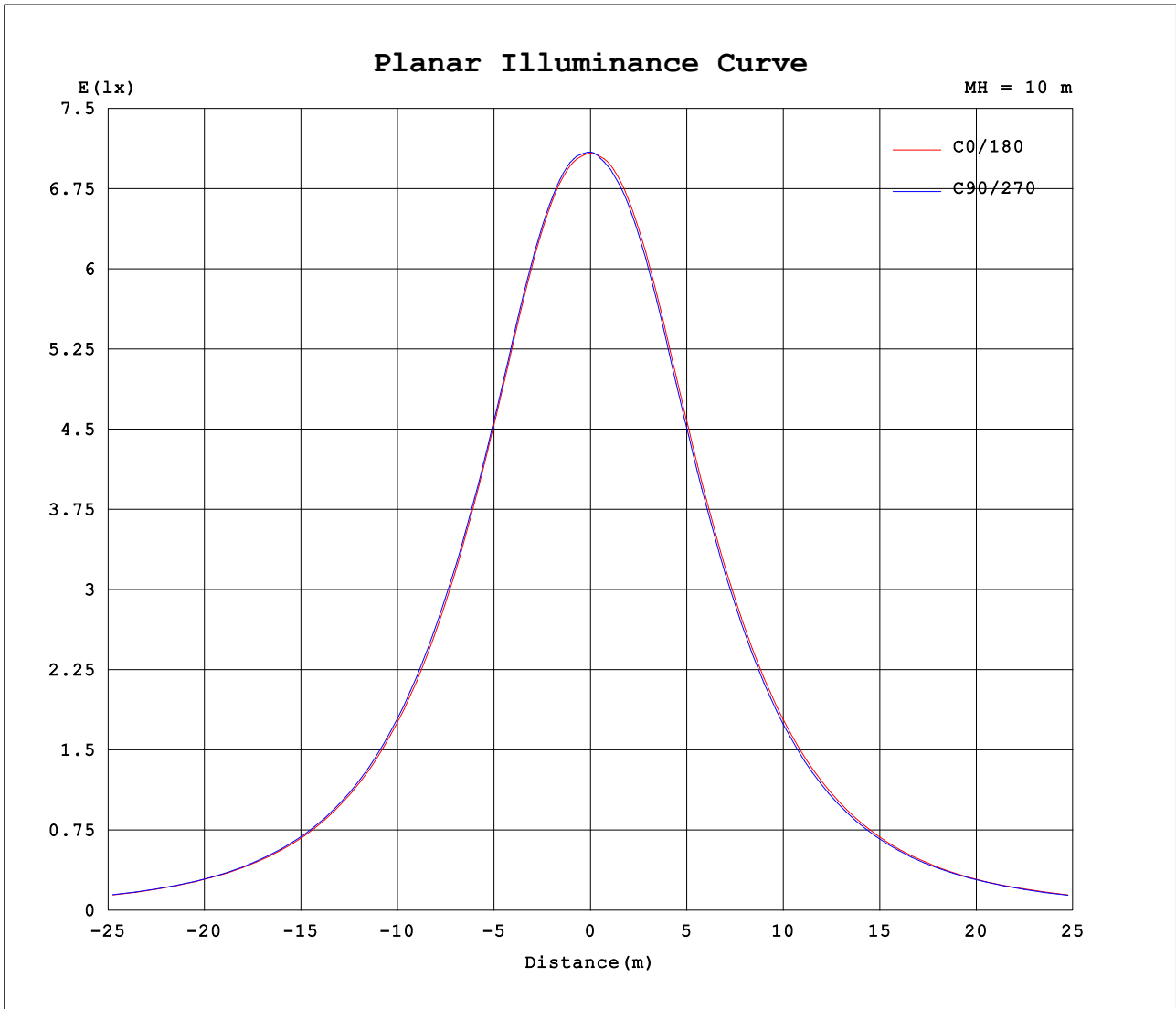
AvgL	cd/m2
L_0~180 (65) av	4385
L_0~180 (75) av	4759
L_0~180 (85) av	7782
L_90~270 (65) av	4368
L_90~270 (75) av	4729
L_90~270 (85) av	7732
L_45 (65) av	4383
L_45 (75) av	4741
L_45 (85) av	7753

Standard: GB/T 29293-2012

C Range: 0 - 360DEG
 C Interval: 30.0DEG
 Test Speed: HIGH
 Temperature:25.3DEG
 Operators:admin
 Test Date:2022-03-16

Range: 0 - 180DEG
 Interval: 1.0DEG
 Test System:EVERFINE GO-2000B_V1 SYSTEM V2.00.411
 Humidity:65.0%
 Test Distance:8.780m [K=1.0000]
 Remarks:

Planar Illuminance Curve



C Range: 0 - 360DEG
 C Interval: 30.0DEG
 Test Speed: HIGH
 Temperature:25.3DEG
 Operators:admin
 Test Date:2022-03-16

Range: 0 - 180DEG
 Interval: 1.0DEG
 Test System:EVERFINE GO-2000B_V1 SYSTEM V2.00.411
 Humidity:65.0%
 Test Distance:8.780m [K=1.0000]
 Remarks:

LUMINOUS DISTRIBUTION INTENSITY DATA

Test:U:119.96V I:0.3839A P:41.889W PF:0.9092 Freq:60.00Hz Lamp Flux:2544.94x1 lm		
NAME: ASD lighting Corp	TYPE:	WEIGHT:
SPEC.:ASD-LFC-HN-20D42-AC-4000K	DIM.:	SERIAL No.:
MFR.: ASD lighting Corp	SUR.:0.43*0.39	Shielding Angle:

Table--1

UNIT: cd

C (DEG) □ (DEG)	0	30	60	90	120	150	180	210	240	270	300	330							
0	709	708	707	709	709	709	709	708	707	709	709	709							
5	708	708	710	711	710	711	709	707	706	705	707	707							
10	705	707	709	708	710	709	706	704	703	701	702	704							
15	694	697	696	698	699	698	696	693	691	690	689	692							
20	673	674	675	678	677	678	677	673	671	669	669	670							
25	644	646	648	649	650	652	649	646	644	640	642	642							
30	612	615	617	618	621	620	617	614	612	608	608	610							
35	576	580	581	585	586	585	582	578	575	572	572	574							
40	538	542	544	549	549	549	545	539	538	534	534	536							
45	498	502	505	508	509	509	505	499	498	493	494	495							
50	454	459	461	464	466	465	461	456	453	449	450	451							
55	409	413	414	417	418	418	415	410	407	403	404	406							
60	361	364	365	370	369	370	366	361	361	356	355	357							
65	310	310	315	314	318	315	311	310	306	305	303	307							
70	258	258	262	261	264	262	260	258	254	253	252	255							
75	206	206	208	208	210	209	207	206	203	203	201	204							
80	154	156	156	158	158	159	156	154	155	152	153	152							
85	113	114	114	115	115	116	115	113	113	111	111	111							
90	82.9	82.3	81.4	81.7	81.5	83.2	83.0	83.1	84.0	83.1	83.0	82.2							
95	65.7	64.6	63.2	63.2	63.4	64.9	65.0	66.1	67.3	67.1	67.0	65.9							
100	55.9	56.0	56.2	56.7	57.0	57.5	56.2	56.2	56.7	56.7	56.6	55.6							
105	51.3	51.1	50.5	50.3	50.4	51.7	51.1	51.4	51.1	50.4	49.9	50.0							
110	45.6	44.5	43.1	43.0	42.8	44.1	44.2	45.2	45.6	45.4	45.0	45.0							
115	39.0	38.1	36.5	36.1	35.8	37.5	37.2	38.5	39.0	39.3	38.8	38.7							
120	29.2	31.4	29.5	28.9	29.0	30.5	27.2	32.4	32.9	33.1	32.6	32.9							
125	24.0	25.4	23.5	22.9	23.4	24.3	21.9	26.0	27.3	27.8	27.5	27.3							
130	19.4	19.9	18.8	18.3	18.4	18.7	17.2	20.5	21.9	22.5	22.4	21.9							
135	15.6	15.7	14.8	13.9	14.2	14.8	13.8	16.2	17.7	18.2	18.1	17.4							
140	12.9	12.4	11.5	11.2	11.2	11.4	10.9	12.5	13.7	14.4	14.4	13.9							
145	11.2	10.8	10.5	10.7	10.6	10.7	10.1	10.4	11.3	11.6	11.8	11.2							
150	11.2	10.9	11.2	11.2	11.1	11.3	10.4	10.2	10.5	10.6	10.6	10.4							
155	11.8	11.6	11.7	12.0	11.8	11.9	11.2	11.1	11.1	11.4	11.2	11.2							
160	12.5	12.4	12.1	12.5	12.5	12.3	12.1	11.6	11.7	12.2	12.0	11.8							
165	12.9	12.6	12.6	13.3	13.0	12.7	12.6	12.4	12.6	12.9	12.6	12.3							
170	12.7	12.5	12.6	13.0	12.8	12.7	12.6	12.5	13.0	13.1	12.8	12.7							
175	12.2	12.1	12.1	12.4	12.0	12.2	12.2	12.1	12.1	12.4	12.2	12.0							
180	11.9	11.8	11.8	11.9	11.7	11.7	11.9	11.7	11.8	11.9	11.7	11.7							

C Range: 0 - 360DEG
 C Interval: 30.0DEG
 Test Speed: HIGH
 Temperature:25.3DEG
 Operators:admin
 Test Date:2022-03-16

□ Range: 0 - 180DEG
 □ Interval: 1.0DEG
 Test System:EVERFINE GO-2000B_V1 SYSTEM V2.00.411
 Humidity:65.0%
 Test Distance:8.780m [K=1.0000]
 Remarks: