



# OUTDOOR WALL LANTERN

► **DESIGN & OPTIONS** - OUTDOOR WALL LANTERN has a modern, multipurpose design and a sleek look. It comes with an E26 medium base and a ST58 5W 2,700K filament bulb. It also has a durable aluminum base that is highly resistant to rust and a clear glass shade that gives off highly efficient and uniform lighting. The modern LED dimmers provide smooth dimming capabilities ranging from 10% to 100%. It comes in a 13" or 17" size with a BLACK finish.

► **INSTALLATION** - Installation is quick and easy: just attach the mounting plate to the outlet box with screws, connect the wires, and fasten the fixture to the mounting plate. All necessary installation accessories are provided. Refer to install instructions for detailed steps.

► **APPLICATION** - This OUTDOOR WALL LANTERN is an ideal maintenance-free solution for residential and commercial applications. It creates a cozy ambience that is perfect for indoor and outdoor projects such as decks, front doors, porches, gardens, corridors, balconies, villas, and walkways. The fixture is Wet location rated and suitable for severe weather conditions.

► **ENERGY SAVINGS & EFFICIENCY** - This fixture is designed to support all kinds of bulbs with E26 sockets, but we strongly recommend using an LED bulb, not only for the high-quality lighting, but also for the appreciable savings.

► **CERTIFICATION & WARRANTY** - Buy with confidence: ASD provides a 5-year warranty along with ETL certification to guarantee top quality products and safety!

<i>Catalog number</i>	
<i>Notes</i>	
<i>Type</i>	



Model	Size	Voltage	Bulb type	Finish	Dimensions (LxWxH)
ASD-WLT21-1326-BK	13 inch	120 V	E26 60W max	Black	5" x 7-1/4" x 13-5/8"
ASD-WLT21-1726-BK	17 inch	120 V	E26 60W max	Black	5-7/8" x 7-5/8" x 18"
Model	Watts	Dimmable	CCT	Lumens	Bulb base type
ST58	5W	TRIAC	2,700 K	300 lm	E26 medium

## ORDERING INFORMATION

Model	UPC	Pcs. in middle box	Middle box size	Middle box weight	GTIN 14 in middle box	Pcs. per carton	Carton size	Carton weight	GTIN 14 in carton
ASD-WLT21-1326-BK	810050734813	2	15.9" x 14.2" x 9.6"	10 lb	10810050734810	4	19.9" x 16.5" x 14.8"	21.8 lb	20810050734817
ASD-WLT21-1726-BK	810050734820	2	20.1" x 15" x 9.4"	16.4 lb	10810050734827	4	20.9" x 19.5" x 15.6"	35.1 lb	20810050734824

For most up-to-date spec sheets please refer to [asd-lighting.com](http://asd-lighting.com)

ASD LIGHTING CORP

E-mail: [orders@asd-lighting.com](mailto:orders@asd-lighting.com) | Web site: [www.asd-lighting.com](http://www.asd-lighting.com)





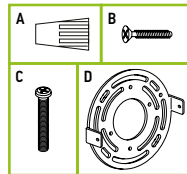
# OUTDOOR WALL LANTERN

## PRODUCT SPECIFICATIONS:

Construction & Materials		
Housing	Steel	
Lens	Clear glass	
Finish	Black	
Weight	ASD-WLT21-1326-BK	3.9 lb (1.8 kg)
	ASD-WLT21-1726-BK	5.5 lb (2.5 kg)
Environmental system		
Work environment	Suitable for Wet Locations	
Operating temperature	-4°F to 122°F (-20°C to 50°C)	
L-70 Life	> 50,000 hrs	
Optical system		
Luminous flux	300 lm	
Color temperature	2,700 K	
CRI	> 80	
Electrical system		
Input voltage	120 V	
Max input current	0.045 A	
Inrush current (Action time)	0.041 A (0.1 S)	
Off state power	0W	
Power consumption	5W	
Dimming compatible controls LED filament		
Brand	Models	
Lutron	MSCL-OP153M    MACL-153M    CTCL-153P    PD-6WCL	
	MSCL-VP153M    SFSQ-F-LA    AYCL-153P    DV603PG	
	DVSCCL-153P    DVCL-153P    MRF2-6CL    S-600P	
	DVSCCL-253P    AYCL-253P    SCL-153P    S603P	
Leviton	C22-6672-ILW    6674	
Regular and voluntary certifications		
5-year limited warranty		
cETLus certified		

## PACKAGE CONTENTS:

Description	Q-ty
Outdoor Wall Lantern	1
Wire nut (A)	3
Black screw (B)	2
Mounting screw (C)	2
Mounting plate (D)	1
Box	1



## INSTALLATION GUIDE

### IMPORTANT SAFETY INFORMATION:

Please read all the instructions below before installation.

- ▶ Make sure that the supply voltage corresponds to the rated product voltage.
- ▶ The product must be installed by a qualified electrician in accordance with the National Electrical Code and corresponding local codes.
- ▶ If the product is damaged, do not use it.

### ⚠ WARNING

**RISK OF PERSONAL INJURY – READ and follow all WARNINGS and installation instructions.** Keep or give to the owner for future reference.

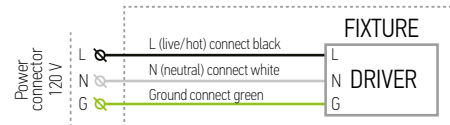
**Risk of cuts:** Wear gloves to prevent cuts or abrasions when removing from carton, handling, installing, and maintaining this product.

**Risk of electric shock:** This product must be installed in accordance with the applicable installation code by a person familiar with the construction and operation of the product and the hazards involved.

**Risk of Fire:** Minimum 194°F supply conductors. Consult a qualified electrician to ensure correct branch circuit conductor.

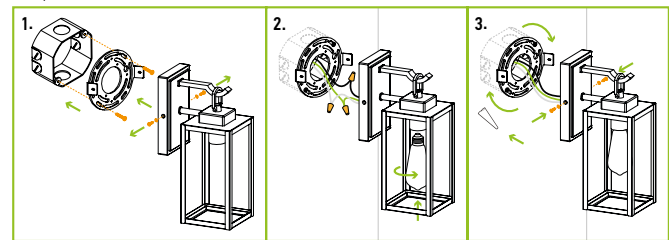
ASD® assumes no responsibility for claims arising out of improper or careless Installation or handling of this product.

### ELECTRICAL SCHEMATIC DIAGRAM:



### INSTALLATION STEPS:

1. Remove the mounting plate by unscrewing the screws from both sides of the fixture. Screw the two mounting screws into the mounting plate. Attach the mounting plate to the outlet box using screws.
2. Put the bulb into the socket and turn it clockwise until it locks into place. Connect the wires: Black to Black, White to White, Ground to Ground. Secure the connection with the wire nuts.
3. Attach the fixture to the mounting plate using two screws on both sides. Before tightening the screws, line up the fixture to ensure the appropriate holes match. For outdoor locations it is recommended to use silicone (not included) shown in the picture below.



For most up-to-date spec sheets please refer to [asd-lighting.com](http://asd-lighting.com)