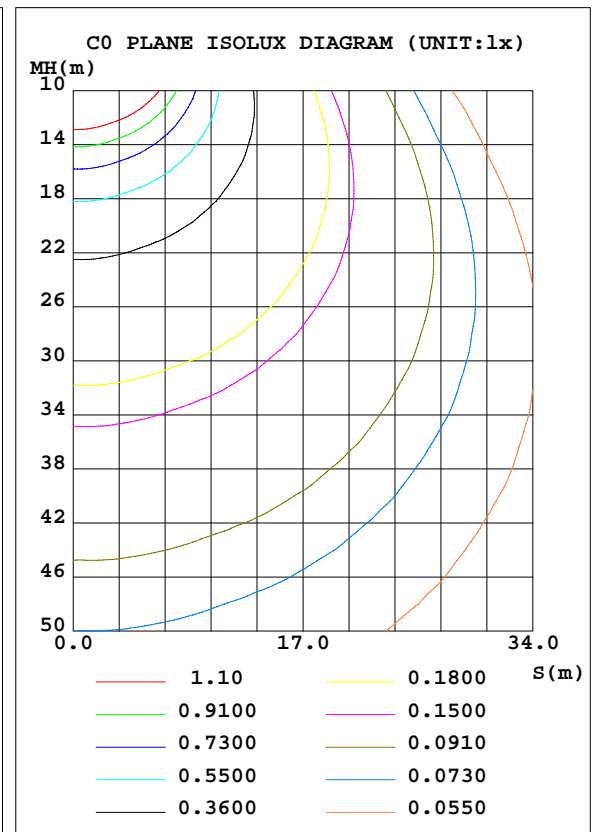
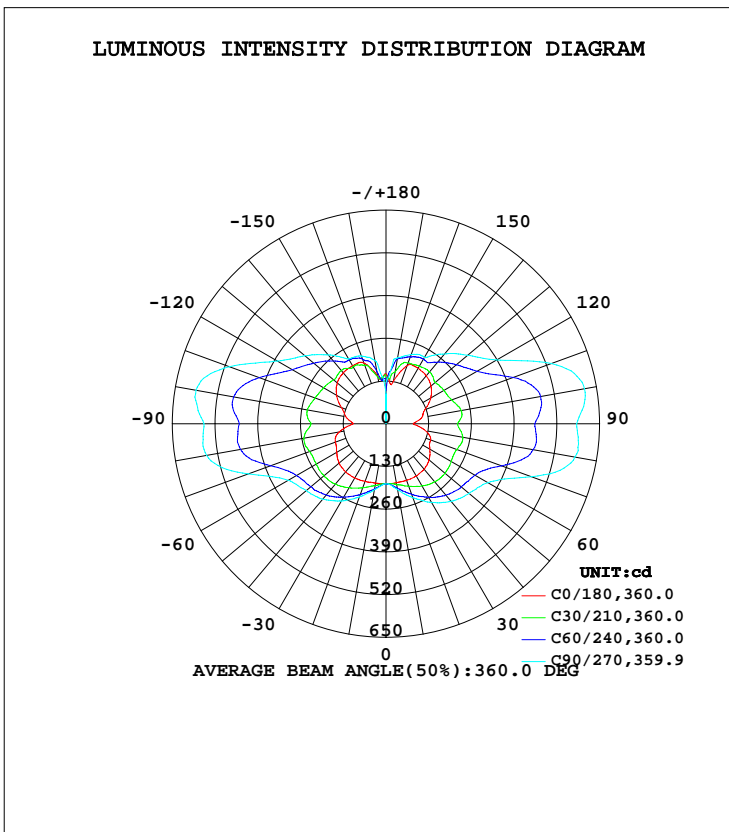


LUMINAIRE PHOTOMETRIC TEST REPORT

Test:U:277.00V I:0.1562A P:36.110W PF:0.8346 Freq:60.00Hz Lamp Flux:3541.6x1 lm		
NAME:	TYPE:LED	WEIGHT:
SPEC.:	DIM.:	SERIAL No.:
MFR.: ASD Lighting corp	SUR.:	Shielding Angle:

DATA OF LAMP		PHOTOMETRIC DATA Eff: 98.08 lm/W			
MODEL	ASD-LWS27-MV-72D40CC-BK	I _{max} (cd)	613.6	S/MH(C0/180)	1.60
NOMINAL POWER(W)	40	LOR(%)	100.0	S/MH(C90/270)	2.26
RATED VOLTAGE(V)	120-277	TOTAL FLUX(lm)	3541.6	η UP, DN(C0-180)	25.0,25.5
NOMINAL FLUX(lm)	3541.6	CIE CLASS	DIFFUSE	η UP, DN(C180-360)	24.4,25.0
LAMPS INSIDE	1	η up(%)	49.5	CIBSE SHR NOM	2.00
TEST VOLTAGE(V)	277	η down(%)	50.5	CIBSE SHR MAX	2.00



C Range: 0 - 360DEG
 C Interval: 15.0DEG
 Test Speed: HIGH
 Temperature: 25.0DEG
 Operators: Alan Wang
 Test Date: 08 May 2023

γ Range: 0 - 180DEG
 γ Interval: 1.0DEG
 Test System: EVERFINE GO-R5000_V2 SYSTEM V2.00.416
 Humidity: 43.5%
 Test Distance: 2.500m [K=1.0390]
 Remarks:

ZONAL FLUX DIAGRAM

ZONAL FLUX DIAGRAM:

γ	C0	C45	C90	C135	C180	C225	C270	C315	γ	Φ zone	Φ total	%lum,lamp
10	182.5	194.3	203.7	195.2	183.3	196.7	204.0	194.5	0- 10	18.03	18.03	0.51,0.51
20	183.4	216.5	239.6	220.1	186.3	219.1	237.0	214.8	10- 20	58.19	76.22	2.15,2.15
30	184.0	240.9	276.2	246.5	190.4	243.7	271.7	237.4	20- 30	104.9	181.2	5.11,5.11
40	180.9	260.5	307.9	269.8	191.5	265.4	299.7	255.9	30- 40	155.0	336.2	9.49,9.49
50	171.5	270.0	330.2	283.2	186.3	276.7	316.5	265.0	40- 50	201.8	538.0	15.2,15.2
60	154.5	273.2	359.1	290.3	173.1	282.9	343.8	267.1	50- 60	239.6	777.6	22,22
70	144.9	296.2	472.5	316.7	164.2	307.3	446.4	289.7	60- 70	282.7	1060	29.9,29.9
80	122.1	339.8	583.6	358.4	144.7	347.2	554.4	326.8	70- 80	354.3	1415	39.9,39.9
90	83.22	332.1	580.0	344.4	100.1	334.3	553.7	315.6	80- 90	375.5	1790	50.5,50.5
100	110.7	348.8	613.1	361.1	124.1	351.4	587.0	331.7	90-100	380.4	2170	61.3,61.3
110	126.4	305.7	535.8	319.8	144.1	316.0	507.5	289.5	100-110	361.3	2532	71.5,71.5
120	157.8	262.4	389.2	278.2	173.7	273.8	382.0	255.2	110-120	288.8	2820	79.6,79.6
130	178.9	240.1	324.8	253.2	193.5	250.6	322.3	234.3	120-130	230.8	3051	86.2,86.2
140	190.7	215.8	277.6	226.5	202.7	221.5	273.4	211.2	130-140	184.6	3236	91.4,91.4
150	195.3	218.4	234.4	226.0	204.5	219.1	227.8	213.6	140-150	138.6	3374	95.3,95.3
160	188.4	207.8	224.4	213.7	196.8	201.5	219.6	208.5	150-160	97.60	3472	98,98
170	132.2	188.1	203.4	167.1	148.4	146.8	195.5	195.9	160-170	54.77	3527	99.6,99.6
180	152.1	141.5	125.8	135.5	150.9	141.6	90.16	131.3	170-180	14.74	3542	100,100
DEG	LUMINOUS INTENSITY:cd									UNIT:lm		

Conical surface Flux(90deg): 431.79 lm

%lum = 12.2%

%lamp = 12.2%

Conical surface Flux(120deg): 777.56 lm

%lum = 22.0%

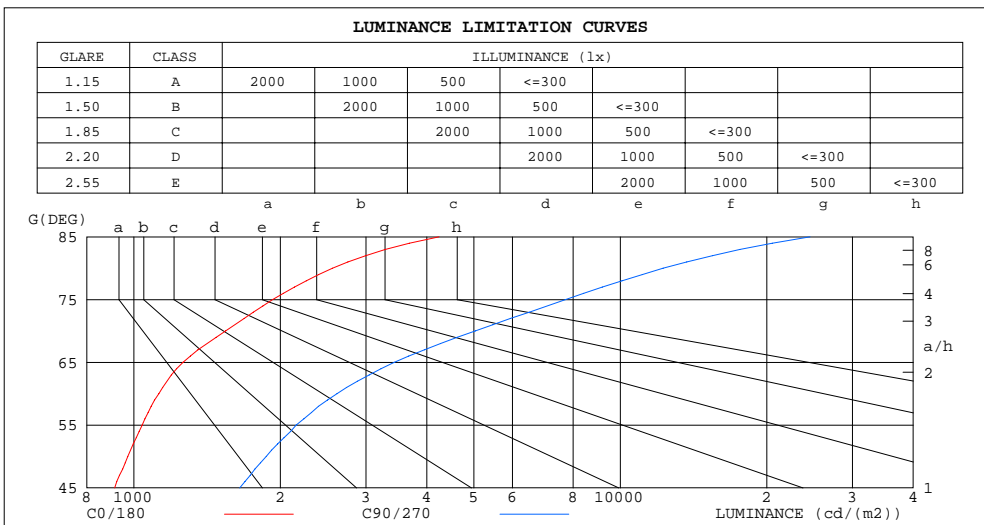
%lamp = 22.0%

C Range: 0 - 360DEG
 C Interval: 15.0DEG
 Test Speed: HIGH
 Temperature: 25.0DEG
 Operators: Alan Wang
 Test Date: 08 May 2023

γ Range: 0 - 180DEG
 γ Interval: 1.0DEG
 Test System: EVERFINE GO-R5000_V2 SYSTEM V2.00.416
 Humidity: 43.5%
 Test Distance: 2.500m [K=1.0390]
 Remarks:

LUMINANCE LIMITATION CURVES

Test:U:277.00V I:0.1562A P:36.110W PF:0.8346 Freq:60.00Hz Lamp Flux:3541.6x1 lm		
NAME:	TYPE:LED	WEIGHT:
SPEC.:	DIM.:	SERIAL No.:
MFR.: ASD Lighting corp	SUR.:	Shielding Angle:



LUMINANCE cd/(m2)		
G (DEG)	C0/180	C90/270
85	4238	24547
80	2561	12244
75	1929	7715
70	1543	5033
65	1262	3430
60	1125	2617
55	1040	2156
50	972	1871
45	913	1650

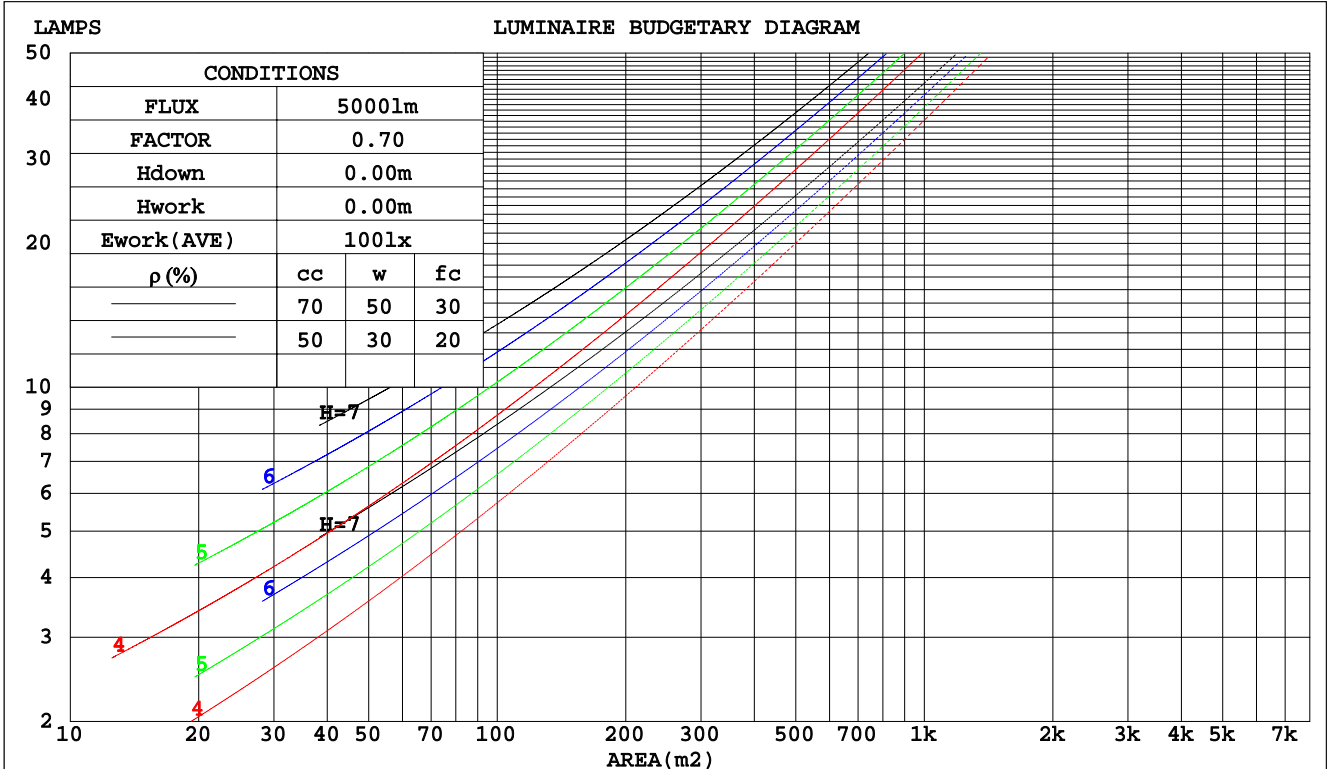
C Range: 0 - 360DEG
 C Interval: 15.0DEG
 Test Speed: HIGH
 Temperature: 25.0DEG
 Operators: Alan Wang
 Test Date: 08 May 2023

γ Range: 0 - 180DEG
 γ Interval: 1.0DEG
 Test System: EVERFINE GO-R5000_V2 SYSTEM V2.00.416
 Humidity: 43.5%
 Test Distance: 2.500m [K=1.0390]
 Remarks:

CU AND LUMINAIRE BUDGETARY ESTIMATE DIAGRAM

Test:U:277.00V I:0.1562A P:36.110W PF:0.8346 Freq:60.00Hz Lamp Flux:3541.6x1 lm		
NAME:	TYPE:LED	WEIGHT:
SPEC.:	DIM.:	SERIAL No.:
MFR.: ASD Lighting corp	SUR.:	Shielding Angle:

pcc	80%			70%			50%			30%			10%			0
	50%	30%	10%	50%	30%	10%	50%	30%	10%	50%	30%	10%	50%	30%	10%	0
pw																0
pfc	20%			20%			20%			20%			20%			0
RCR	RCR:Room Cavity Ratio						Coefficients of Utilization(CU)									
0.0	1.07	1.07	1.07	.99	.99	.99	.84	.84	.84	.70	.70	.70	.57	.57	.57	.51
1.0	.86	.80	.75	.79	.74	.69	.65	.61	.58	.53	.50	.47	.42	.40	.37	.32
2.0	.72	.64	.57	.66	.59	.53	.55	.49	.44	.44	.40	.36	.34	.31	.28	.23
3.0	.62	.53	.46	.57	.49	.42	.47	.40	.35	.37	.32	.28	.29	.25	.22	.17
4.0	.54	.45	.37	.50	.41	.34	.41	.34	.29	.33	.27	.23	.25	.21	.18	.14
5.0	.48	.38	.31	.44	.35	.29	.36	.29	.24	.29	.23	.19	.22	.18	.15	.11
6.0	.42	.33	.26	.39	.30	.24	.32	.25	.20	.26	.20	.16	.20	.16	.12	.09
7.0	.38	.29	.23	.35	.27	.21	.29	.22	.17	.23	.18	.14	.18	.14	.11	.08
8.0	.34	.26	.20	.31	.24	.18	.26	.20	.15	.21	.16	.12	.16	.12	.09	.07
9.0	.31	.23	.17	.29	.21	.16	.24	.18	.13	.19	.14	.11	.15	.11	.08	.06
10.0	.28	.21	.15	.26	.19	.14	.22	.16	.12	.18	.13	.10	.14	.10	.07	.05



C Range: 0 - 360DEG
 C Interval: 15.0DEG
 Test Speed: HIGH
 Temperature: 25.0DEG
 Operators: Alan Wang
 Test Date: 08 May 2023

γ Range: 0 - 180DEG
 γ Interval: 1.0DEG
 Test System: EVERFINE GO-R5000_V2 SYSTEM V2.00.416
 Humidity: 43.5%
 Test Distance: 2.500m [K=1.0390]
 Remarks:

WEC AND CCEC

Test:U:277.00V I:0.1562A P:36.110W PF:0.8346 Freq:60.00Hz Lamp Flux:3541.6x1 lm		
NAME:	TYPE:LED	WEIGHT:
SPEC.:	DIM.:	SERIAL No.:
MFR.: ASD Lighting corp	SUR.:	Shielding Angle:

ρcc	80%			70%			50%			30%			10%			0
ρw	50%	30%	10%	50%	30%	10%	50%	30%	10%	50%	30%	10%	50%	30%	10%	0
ρfc	20%			20%			20%			20%			20%			0
RCR	RCR:Room Cavity Ratio						Wall Exitance Coefficients(WEC)									
0.0																
1.0	.423	.241	.076	.401	.229	.073	.359	.206	.066	.321	.185	.059	.285	.165	.053	
2.0	.349	.192	.059	.329	.181	.056	.291	.162	.050	.256	.143	.045	.223	.126	.040	
3.0	.303	.161	.048	.284	.152	.046	.249	.135	.041	.217	.119	.036	.187	.104	.032	
4.0	.269	.140	.041	.252	.132	.039	.220	.116	.035	.190	.102	.031	.162	.088	.027	
5.0	.242	.123	.036	.226	.116	.034	.197	.102	.030	.169	.089	.027	.144	.077	.023	
6.0	.220	.110	.032	.206	.104	.030	.178	.091	.027	.153	.079	.023	.129	.068	.020	
7.0	.202	.100	.028	.188	.094	.027	.163	.083	.024	.140	.072	.021	.118	.061	.018	
8.0	.186	.091	.026	.174	.086	.024	.151	.075	.021	.129	.065	.019	.108	.055	.016	
9.0	.173	.084	.023	.162	.079	.022	.140	.069	.020	.119	.060	.017	.100	.051	.015	
10.0	.162	.077	.021	.151	.073	.020	.131	.064	.018	.111	.055	.016	.093	.047	.013	

ρcc	80%			70%			50%			30%			10%			0
ρw	50%	30%	10%	50%	30%	10%	50%	30%	10%	50%	30%	10%	50%	30%	10%	0
ρfc	20%			20%			20%			20%			20%			0
RCR	RCR:Room Cavity Ratio						Ceiling Cavity Exitance Coefficients(CCEC)									
0.0	.567	.567	.567	.485	.485	.485	.331	.331	.331	.190	.190	.190	.061	.061	.061	
1.0	.568	.535	.505	.486	.459	.435	.332	.316	.301	.191	.183	.175	.061	.059	.057	
2.0	.562	.514	.473	.482	.443	.409	.330	.306	.285	.190	.178	.167	.061	.058	.055	
3.0	.555	.499	.454	.476	.431	.394	.327	.299	.276	.189	.175	.163	.061	.057	.053	
4.0	.548	.488	.442	.470	.421	.384	.323	.294	.270	.187	.172	.160	.060	.056	.053	
5.0	.540	.479	.433	.464	.414	.377	.320	.289	.266	.185	.170	.158	.060	.055	.052	
6.0	.533	.471	.427	.458	.408	.372	.316	.286	.263	.183	.168	.156	.059	.055	.052	
7.0	.526	.465	.422	.453	.403	.368	.313	.283	.261	.182	.167	.155	.059	.055	.051	
8.0	.520	.460	.419	.447	.399	.365	.310	.280	.259	.180	.165	.154	.058	.054	.051	
9.0	.514	.456	.416	.442	.395	.363	.307	.278	.258	.179	.164	.154	.058	.054	.051	
10.0	.508	.452	.414	.438	.392	.362	.304	.276	.257	.177	.163	.153	.057	.054	.051	

C Range: 0 - 360DEG
 C Interval: 15.0DEG
 Test Speed: HIGH
 Temperature: 25.0DEG
 Operators: Alan Wang
 Test Date: 08 May 2023

γ Range: 0 - 180DEG
 γ Interval: 1.0DEG
 Test System: EVERFINE GO-R5000_V2 SYSTEM V2.00.416
 Humidity: 43.5%
 Test Distance: 2.500m [K=1.0390]
 Remarks:

UGR(Unified Glare Rating) Table

Test:U:277.00V I:0.1562A P:36.110W PF:0.8346 Freq:60.00Hz Lamp Flux:3541.6x1 lm										
NAME:			TYPE:LED			WEIGHT:				
SPEC.:			DIM.:			SERIAL No.:				
MFR.: ASD Lighting corp			SUR.:			Shielding Angle:				
ceiling/cavity	0.7	0.7	0.5	0.5	0.3	0.7	0.7	0.5	0.5	0.3
walls	0.5	0.3	0.5	0.3	0.3	0.5	0.3	0.5	0.3	0.3
working plane	0.2	0.2	0.2	0.2	0.2	0.2	0.2	0.2	0.2	0.2
Room dimensions	Viewed crosswise					Viewed endwise				
x = 2H y = 2H	9.3	10.4	10.1	11.2	12.4	12.8	13.8	13.6	14.7	15.9
3H	11.8	12.8	12.7	13.7	14.9	17.1	18.1	18.0	19.1	20.2
4H	13.2	14.1	14.1	15.1	16.3	19.9	20.8	20.8	21.7	22.9
6H	14.7	15.5	15.6	16.5	17.7	22.7	23.5	23.6	24.5	25.7
8H	15.4	16.2	16.3	17.2	18.4	24.1	24.9	25.0	25.9	27.1
12H	16.2	17.0	17.1	17.9	19.2	25.6	26.4	26.5	27.4	28.6
4H 2H	11.1	12.1	12.0	13.0	14.2	13.4	14.3	14.3	15.3	16.5
3H	13.8	14.6	14.7	15.6	16.8	18.0	18.8	18.9	19.8	21.0
4H	15.3	16.1	16.3	17.0	18.3	20.9	21.6	21.8	22.6	23.8
6H	16.8	17.5	17.8	18.5	19.8	23.9	24.6	24.8	25.5	26.8
8H	17.6	18.2	18.6	19.2	20.5	25.4	26.1	26.4	27.0	28.3
12H	18.4	19.0	19.4	20.0	21.3	27.1	27.7	28.1	28.7	30.0
8H 4H	17.3	17.9	18.2	18.9	20.2	21.2	21.9	22.2	22.9	24.1
6H	19.0	19.6	20.0	20.6	21.9	24.5	25.1	25.5	26.1	27.4
8H	19.9	20.4	20.9	21.4	22.7	26.3	26.8	27.3	27.8	29.1
12H	20.8	21.2	21.8	22.2	23.6	28.2	28.7	29.2	29.7	31.0
12H 4H	18.1	18.7	19.1	19.7	21.0	21.2	21.8	22.2	22.8	24.1
6H	20.0	20.5	21.0	21.5	22.9	24.6	25.1	25.6	26.1	27.5
8H	21.1	21.5	22.1	22.5	23.9	26.5	26.9	27.5	28.0	29.3
Variations with the observer position at spacings:										
S = 1.0H	+ 0.1 / - 0.1					+ 0.1 / - 0.1				
1.5H	+ 0.2 / - 0.2					+ 0.2 / - 0.3				
2.0H	+ 0.3 / - 0.4					+ 0.3 / - 0.4				

CIE Pub.117, 3542 lm Total Lamp Luminous Flux Corrected (8log(F/F0) = 4.4)
 Area: 0.2745 m2

C Range: 0 - 360DEG
 C Interval: 15.0DEG
 Test Speed: HIGH
 Temperature: 25.0DEG
 Operators: Alan Wang
 Test Date: 08 May 2023

γ Range: 0 - 180DEG
 γ Interval: 1.0DEG
 Test System: EVERFINE GO-R5000_V2 SYSTEM V2.00.416
 Humidity: 43.5%
 Test Distance: 2.500m [K=1.0390]
 Remarks:

UTILIZATION FACTORS TABLE

Test:U:277.00V I:0.1562A P:36.110W PF:0.8346 Freq:60.00Hz Lamp Flux:3541.6x1 lm		
NAME:	TYPE:LED	WEIGHT:
SPEC.:	DIM.:	SERIAL No.:
MFR.: ASD Lighting corp	SUR.:	Shielding Angle:

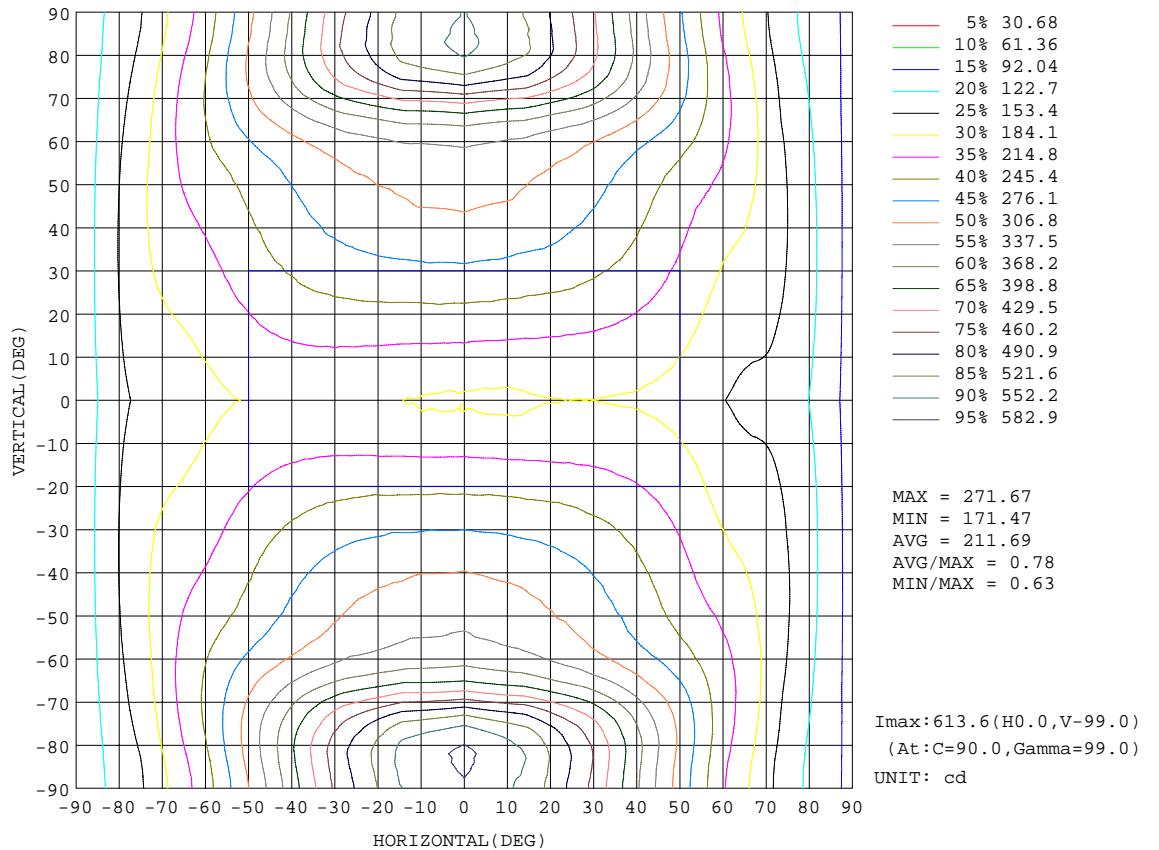
REFLECTANCE										
Ceiling	0.8	0.8	0.8	0.7	0.7	0.7	0.5	0.5	0.5	0
Walls	0.7	0.5	0.3	0.7	0.5	0.3	0.7	0.5	0.3	0
Working plane	0.2	0.2	0.2	0.2	0.2	0.2	0.2	0.2	0.2	0
ROOM INDEX	UTILIZATION FACTORS(PERCENT) $k(RI) \times RCR = 5$									
k = 0.60	36	23	16	34	22	15	30	20	14	7
0.80	44	30	22	41	29	21	36	26	19	9
1.00	51	37	28	48	35	26	42	33	24	12
1.25	58	43	34	54	41	32	46	36	28	15
1.50	63	49	39	59	46	37	50	40	33	17
2.00	71	58	48	65	54	45	56	46	39	21
2.50	76	64	54	70	59	51	59	51	44	24
3.00	80	69	60	74	64	56	62	55	48	26
4.00	85	75	67	79	70	63	66	60	54	30
5.00	89	80	73	82	74	68	69	63	58	32
ROOM INDEX	UF(total)									Direct
According to DIN EN 13032-2 2004			Suspended				SHRNOM = 1.25			

C Range: 0 - 360DEG
 C Interval: 15.0DEG
 Test Speed: HIGH
 Temperature: 25.0DEG
 Operators: Alan Wang
 Test Date: 08 May 2023

γ Range: 0 - 180DEG
 γ Interval: 1.0DEG
 Test System: EVERFINE GO-R5000_V2 SYSTEM V2.00.416
 Humidity: 43.5%
 Test Distance: 2.500m [K=1.0390]
 Remarks:

ISOCANDELA DIAGRAM

Test:U:277.00V I:0.1562A P:36.110W PF:0.8346 Freq:60.00Hz Lamp Flux:3541.6x1 lm		
NAME:	TYPE:LED	WEIGHT:
SPEC.:	DIM.:	SERIAL No.:
MFR.: ASD Lighting corp	SUR.:	Shielding Angle:

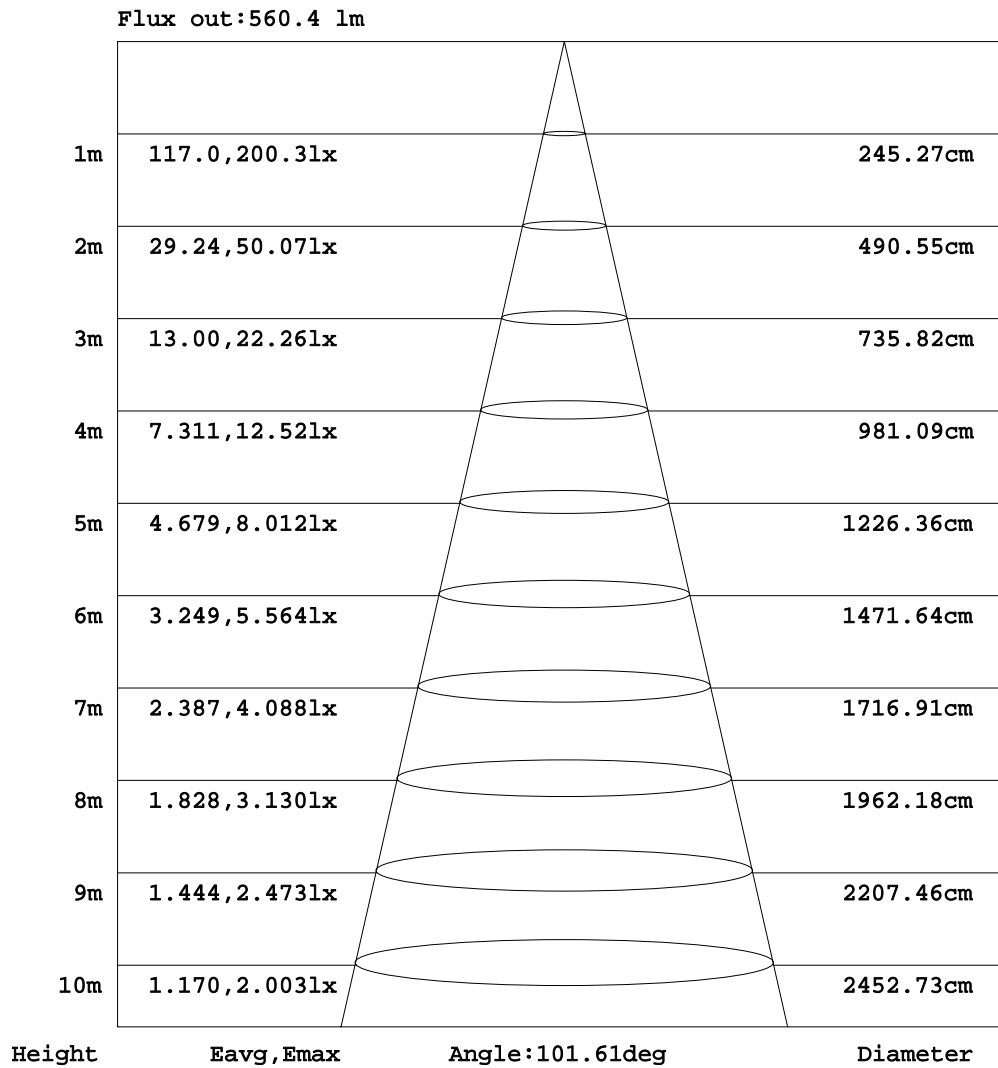


C Range: 0 - 360DEG
 C Interval: 15.0DEG
 Test Speed: HIGH
 Temperature: 25.0DEG
 Operators: Alan Wang
 Test Date: 08 May 2023

γ Range: 0 - 180DEG
 γ Interval: 1.0DEG
 Test System: EVERFINE GO-R5000_V2 SYSTEM V2.00.416
 Humidity: 43.5%
 Test Distance: 2.500m [K=1.0390]
 Remarks:

AAI Figure

Test:U:277.00V I:0.1562A P:36.110W PF:0.8346 Freq:60.00Hz Lamp Flux:3541.6x1 lm		
NAME:	TYPE:LED	WEIGHT:
SPEC.:	DIM.:	SERIAL No.:
MFR.: ASD Lighting corp	SUR.:	Shielding Angle:



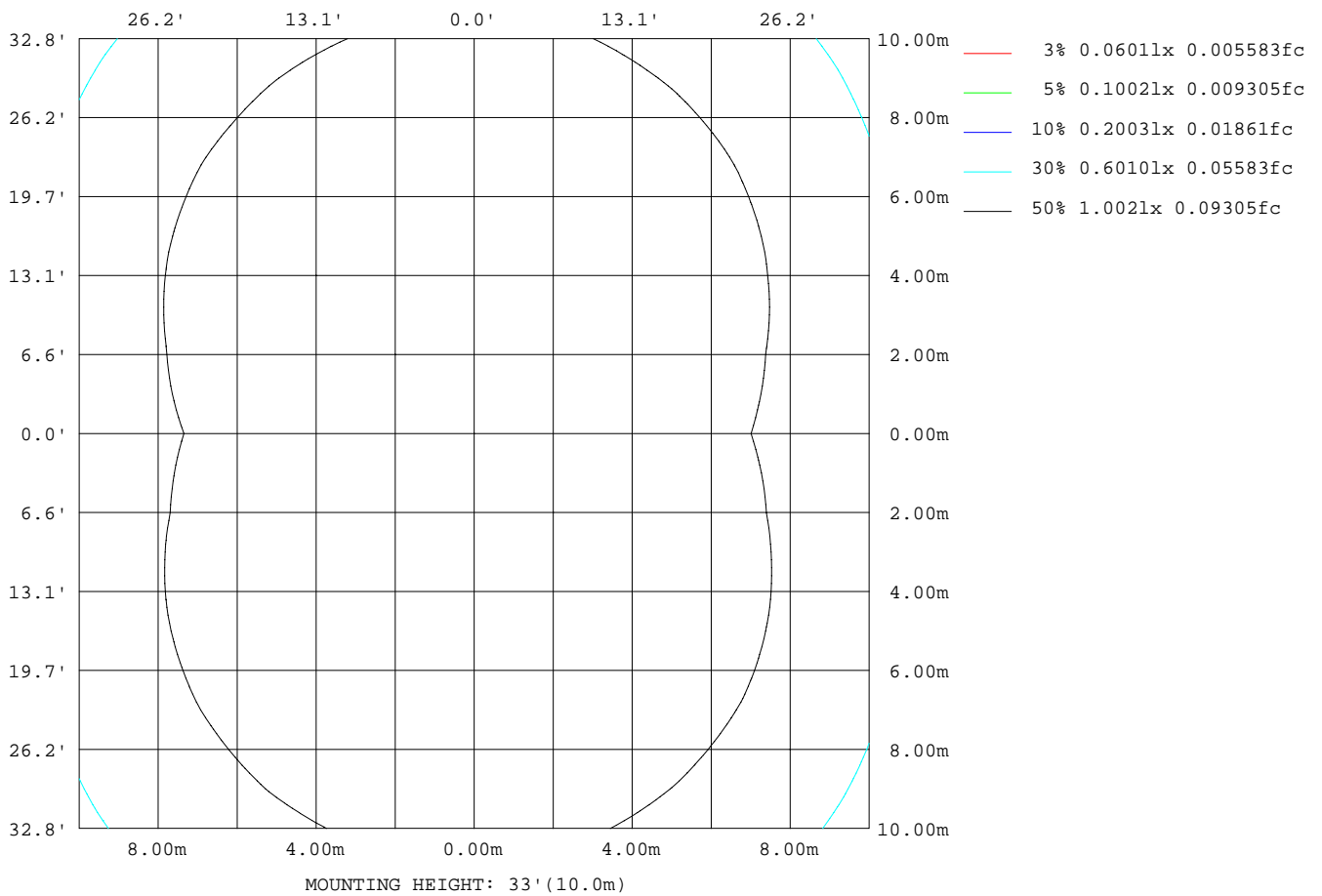
Note:The Curves indicate the illuminated area and the average illumination when the luminaire is at different distance.

C Range: 0 - 360DEG
 C Interval: 15.0DEG
 Test Speed: HIGH
 Temperature: 25.0DEG
 Operators: Alan Wang
 Test Date: 08 May 2023

γ Range: 0 - 180DEG
 γ Interval: 1.0DEG
 Test System: EVERFINE GO-R5000_V2 SYSTEM V2.00.416
 Humidity: 43.5%
 Test Distance: 2.500m [K=1.0390]
 Remarks:

ISOLUX DIAGRAM

Test:U:277.00V I:0.1562A P:36.110W PF:0.8346 Freq:60.00Hz Lamp Flux:3541.6x1 lm		
NAME:	TYPE:LED	WEIGHT:
SPEC.:	DIM.:	SERIAL No.:
MFR.: ASD Lighting corp	SUR.:	Shielding Angle:



C Range: 0 - 360DEG
 C Interval: 15.0DEG
 Test Speed: HIGH
 Temperature: 25.0DEG
 Operators: Alan Wang
 Test Date: 08 May 2023

γ Range: 0 - 180DEG
 γ Interval: 1.0DEG
 Test System: EVERFINE GO-R5000_V2 SYSTEM V2.00.416
 Humidity: 43.5%
 Test Distance: 2.500m [K=1.0390]
 Remarks:

LED Avg.L Report

Test:U:277.00V I:0.1562A P:36.110W PF:0.8346 Freq:60.00Hz Lamp Flux:3541.6x1 lm		
NAME:	TYPE:LED	WEIGHT:
SPEC.:	DIM.:	SERIAL No.:
MFR.: ASD Lighting corp	SUR.:	Shielding Angle:

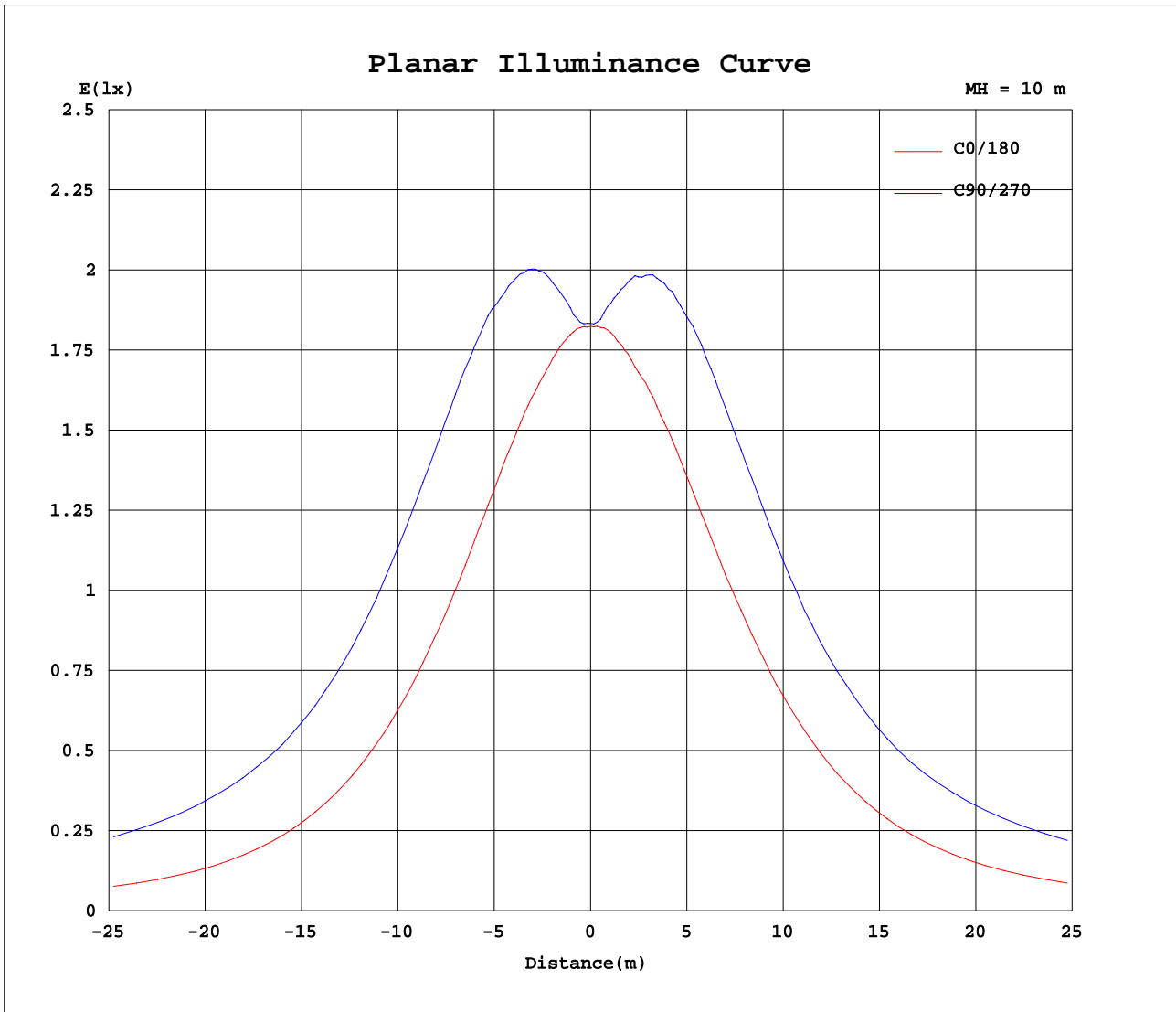
AvgL	cd/m2
L_0~180(65)av	1350
L_0~180(75)av	2082
L_0~180(85)av	4676
L_90~270(65)av	3360
L_90~270(75)av	7491
L_90~270(85)av	23940
L_45(65)av	2453
L_45(75)av	4615
L_45(85)av	14206

Standard: GB/T 29293-2012

C Range: 0 - 360DEG
 C Interval: 15.0DEG
 Test Speed: HIGH
 Temperature: 25.0DEG
 Operators: Alan Wang
 Test Date: 08 May 2023

γ Range: 0 - 180DEG
 γ Interval: 1.0DEG
 Test System: EVERFINE GO-R5000_V2 SYSTEM V2.00.416
 Humidity: 43.5%
 Test Distance: 2.500m [K=1.0390]
 Remarks:

Planar Illuminance Curve



C Range: 0 - 360DEG
 C Interval: 15.0DEG
 Test Speed: HIGH
 Temperature: 25.0DEG
 Operators: Alan Wang
 Test Date: 08 May 2023

γ Range: 0 - 180DEG
 γ Interval: 1.0DEG
 Test System: EVERFINE GO-R5000_V2 SYSTEM V2.00.416
 Humidity: 43.5%
 Test Distance: 2.500m [K=1.0390]
 Remarks:

LUMINOUS DISTRIBUTION INTENSITY DATA

Test:U:277.00V I:0.1562A P:36.110W PF:0.8346 Freq:60.00Hz Lamp Flux:3541.6x1 lm		
NAME:	TYPE:LED	WEIGHT:
SPEC.:	DIM.:	SERIAL No.:
MFR.: ASD Lighting corp	SUR.:	Shielding Angle:

Table--1

UNIT: cd

C(DEG) γ (DEG)	0	15	30	45	60	75	90	105	120	135	150	165	180	195	210	225	240	255	270
0	182	183	183	184	184	183	183	183	184	184	183	183	182	183	183	184	184	183	183
5	183	183	184	185	187	189	188	189	187	186	184	183	183	184	184	187	189	190	191
10	182	182	188	194	200	203	204	203	200	195	189	184	183	185	191	197	201	204	204
15	183	185	194	205	214	219	222	220	214	206	196	187	184	189	198	207	215	219	219
20	183	188	202	216	228	236	240	237	230	220	206	192	186	195	207	219	229	235	237
25	184	193	211	229	244	254	257	255	246	233	216	198	189	200	216	232	244	252	254
30	184	196	218	241	259	271	276	273	262	247	225	202	190	205	225	244	258	268	272
35	182	199	226	252	272	286	293	289	278	258	233	207	191	210	233	255	272	283	286
40	181	200	230	261	284	300	308	303	291	270	240	210	192	213	240	265	283	295	300
45	177	200	234	267	293	312	320	316	301	277	246	212	190	214	245	272	292	306	309
50	171	197	235	270	299	319	330	324	309	283	248	211	186	214	247	277	298	313	317
55	164	193	233	271	305	330	340	335	316	287	249	209	181	211	247	280	304	321	328
60	154	185	229	273	314	344	359	351	326	290	248	205	173	207	246	283	315	335	344
65	146	180	227	278	333	377	398	386	348	298	247	200	167	202	245	289	335	369	382
70	145	180	230	296	374	440	473	450	392	317	251	199	164	201	247	307	374	428	446
75	137	176	236	323	426	509	548	520	443	343	258	197	159	199	254	332	423	493	516
80	122	166	237	340	454	544	584	555	471	358	258	187	145	189	254	347	450	526	554
85	101	149	227	338	459	549	587	558	473	355	246	168	122	170	242	343	453	531	558
90	83.2	135	218	332	453	543	580	551	465	344	232	150	100	152	228	334	446	526	554
95	96.0	147	231	346	472	567	604	572	484	360	243	161	111	163	240	350	466	549	575
100	111	153	232	349	478	574	613	581	489	361	245	166	124	167	244	351	471	556	587
105	117	147	224	332	458	555	593	561	467	346	239	162	132	164	237	338	450	534	563
110	126	145	213	306	413	501	536	506	423	320	230	163	144	163	230	316	410	483	508
115	142	148	206	277	357	424	455	434	372	294	225	167	160	165	224	292	364	420	438
120	158	162	203	262	320	368	389	375	333	278	220	182	174	176	220	274	329	368	382
125	169	173	200	250	298	333	351	340	308	265	216	192	185	185	214	262	307	337	347
130	179	180	196	240	279	311	325	316	290	253	211	197	194	190	208	251	287	313	322
135	186	184	202	228	263	289	302	294	272	241	217	201	200	195	210	237	269	290	298
140	191	185	206	216	245	267	278	272	253	227	219	202	203	198	212	222	250	268	273
145	194	187	206	220	227	247	255	250	234	229	218	199	204	197	205	220	230	245	250
150	195	185	203	218	227	233	234	235	234	226	214	195	204	192	201	219	225	228	228
155	196	183	199	214	224	231	233	232	227	220	210	192	204	190	197	207	221	225	225
160	188	177	197	208	217	222	224	224	219	214	204	183	197	189	191	201	210	217	220
165	161	167	189	203	208	212	214	213	210	201	185	164	174	175	167	181	197	206	210
170	132	145	160	188	201	203	203	202	184	167	145	146	148	148	144	147	163	180	196
175	128	126	136	158	160	169	163	149	142	139	139	143	138	138	141	134	133	136	146
180	152	149	139	142	100.0	142	126	97.4	128	135	147	150	151	151	148	142	136	129	90.2

C Range: 0 - 360DEG
 C Interval: 15.0DEG
 Test Speed: HIGH
 Temperature: 25.0DEG
 Operators: Alan Wang
 Test Date: 08 May 2023

γ Range: 0 - 180DEG
 γ Interval: 1.0DEG
 Test System: EVERFINE GO-R5000_V2 SYSTEM V2.00.416
 Humidity: 43.5%
 Test Distance: 2.500m [K=1.0390]
 Remarks:

LUMINOUS DISTRIBUTION INTENSITY DATA

Test:U:277.00V I:0.1562A P:36.110W PF:0.8346 Freq:60.00Hz Lamp Flux:3541.6x1 lm		
NAME:	TYPE:LED	WEIGHT:
SPEC.:	DIM.:	SERIAL No.:
MFR.: ASD Lighting corp	SUR.:	Shielding Angle:

Table--2

UNIT: cd

C(DEG) γ (DEG)	285	300	315	330	345														
0	183	184	184	183	183														
5	190	188	186	183	183														
10	203	200	194	188	183														
15	218	213	204	195	186														
20	234	226	215	202	190														
25	250	240	227	210	193														
30	265	254	237	217	196														
35	280	266	248	223	198														
40	292	278	256	227	199														
45	303	286	262	230	199														
50	309	292	265	231	195														
55	317	297	267	229	191														
60	331	305	267	226	184														
65	362	323	273	223	178														
70	419	362	290	227	179														
75	484	409	314	233	175														
80	519	435	327	231	163														
85	521	438	323	220	146														
90	518	432	316	207	129														
95	540	450	330	220	141														
100	548	453	332	223	147														
105	524	430	313	214	142														
110	471	388	290	205	139														
115	408	346	269	201	145														
120	359	314	255	198	158														
125	328	291	245	195	169														
130	306	275	234	191	176														
135	285	258	224	198	180														
140	264	240	211	202	181														
145	242	222	213	202	181														
150	226	222	214	200	178														
155	224	220	212	200	179														
160	218	215	208	197	183														
165	210	207	204	196	172														
170	198	198	196	178	152														
175	162	159	151	149	126														
180	90.9	92.0	131	138	143														

C Range: 0 - 360DEG
 C Interval: 15.0DEG
 Test Speed: HIGH
 Temperature: 25.0DEG
 Operators: Alan Wang
 Test Date: 08 May 2023

γ Range: 0 - 180DEG
 γ Interval: 1.0DEG
 Test System: EVERFINE GO-R5000_V2 SYSTEM V2.00.416
 Humidity: 43.5%
 Test Distance: 2.500m [K=1.0390]
 Remarks: