



LED DOWNLIGHT RETROFIT KIT GIMBAL

► **DESIGN & OPTIONS** - LED DOWNLIGHT RETROFIT KIT GIMBAL is a perfect for sloped ceilings and directional lighting as the light can pivot and rotate for illumination in the desired area. Smooth dimming capabilities ranging from 100% to 10% with modern LED dimmers allow you to control the look and feel of your space. You can choose either 3000K, 4000K or 5000K color temperature. The 90° beam angle grants you smooth and even lighting.

INSTALLATION - Installation has never been easier with our universal TP24 or E26 connectors. It has everything you need in one set. Preinstalled spring clips are the best solution for quick and easy installation. This fixture is suitable for most new construction, remodeling, and shallow recessed lighting housings. Refer to install instructions for detailed steps.

APPLICATION - With 355° of horizontal rotation and up to 25° of vertical rotation, this LED DOWNLIGHT RETROFIT KIT GIMBAL provides you with even and balanced lighting in your family room, bedroom, hallways, corridors, or any other common areas in your living space. It is also suitable for Damp locations, making it perfect for kitchen and garage. You could also use it as a complimentary light to an existing ceiling light.

ENERGY SAVINGS & EFFICIENCY - Replacing an incandescent fixture with LED DOWNLIGHT RETROFIT KIT GIMBAL can save you 8 times as much on your current energy costs. With a lifespan of 50,000 hours, these fixtures are made to last decades under normal operation! This fixture will save you a significant amount of money in its lifetime.

CERTIFICATION & WARRANTY - Buy with confidence: ASD provides a 5-year warranty along with ETL and ENERGY STAR certifications to guarantee top quality products and safety!

Top US certifications allow participation in rebates; please check the rebate programs available in your state.

Catalog number	
Notes	
Type	



PRODUCT LEGEND:

Family	Size	Dimmable	Watts	CCT	Finish
ASD-LDLRK-GBR	X	X	XX	XX	XX
LED Downlight Retrofit Kit Gimbal	4 = 4 inch 6 = 6 inch	D = Dimmable	10 = 10 W 15 = 15 W	30 = 3,000 K 40 = 4,000 K 50 = 5,000 K	WH = White

LED DOWNLIGHT RETROFIT KIT GIMBAL:

Model	Size	Watts	Dimmable	CCT	luminoso	Dimensions (LxWxH)
ASD-LDLRK-GBR-4D1030-WH	4 inch	10 W	TRIAC	3,000 K	720 lm	5 3/8" x 5 3/8" x 2 9/16"
ASD-LDLRK-GBR-4D1040-WH	4 inch	10 W	TRIAC	4,000 K	740 lm	5 3/8" x 5 3/8" x 2 9/16"
ASD-LDLRK-GBR-4D1050-WH	4 inch	10 W	TRIAC	5,000 K	740 lm	5 3/8" x 5 3/8" x 2 9/16"
ASD-LDLRK-GBR-6D1530-WH	6 inch	15 W	TRIAC	3,000 K	1,010 lm	7 3/4" x 7 3/4" x 2"
ASD-LDLRK-GBR-6D1540-WH	6 inch	15 W	TRIAC	4,000 K	1,040 lm	7 3/4" x 7 3/4" x 2"
ASD-LDLRK-GBR-6D1550-WH	6 inch	15 W	TRIAC	5,000 K	1,060 lm	7 3/4" x 7 3/4" x 2"

ORDERING INFORMATION:

Model	UPC	Pcs. per Carton	Carton Size	Carton Weight	GTIN 14 for Carton
ASD-LDLRK-GBR-4D1030-WH	810050731782	12	18.5" x 11.8" x 6.2"	10.8 lb	30810050731783
ASD-LDLRK-GBR-4D1040-WH	810050731799	12	18.5" x 11.8" x 6.2"	10.8 lb	30810050731790
ASD-LDLRK-GBR-4D1050-WH	810050731805	12	18.5" x 11.8" x 6.2"	10.8 lb	30810050731806
ASD-LDLRK-GBR-6D1530-WH	810050731812	12	16.5" x 16.5" x 8.7"	16.3 lb	30810050731813
ASD-LDLRK-GBR-6D1540-WH	810050731829	12	16.5" x 16.5" x 8.7"	16.3 lb	30810050731820
ASD-LDLRK-GBR-6D1550-WH	810050731836	12	16.5" x 16.5" x 8.7"	16.3 lb	30810050731837

For most up-to-date spec sheets please refer to asd-lighting.com

ASD LIGHTING CORP

E-mail: orders@asd-lighting.com | Web site: www.asd-lighting.com





LED DOWNLIGHT RETROFIT KIT GIMBAL

PRODUCT SPECIFICATIONS:

Construction & Materials			
Housing	Aluminum, PC		
Lens	Acrylic		
Finish Color	White		
Weight	ASD-LDLRK-GBR-4D1030-WH	0.7 lb (0.3 kg)	
	ASD-LDLRK-GBR-4D1040-WH		
	ASD-LDLRK-GBR-4D1050-WH		
	ASD-LDLRK-GBR-6D1530-WH	1.1 lb (0.5 kg)	
	ASD-LDLRK-GBR-6D1540-WH		
ASD-LDLRK-GBR-6D1550-WH			
Environmental System			
Work Environment	Suitable for Damp Locations		
Operating Temperature	-13°F to 113°F (-25°C to 45°C)		
L-70 Life	> 50,000 hrs		
Optical System			
Luminous Flux	ASD-LDLRK-GBR-4D1030-WH	720 lm	
	ASD-LDLRK-GBR-4D1040-WH	740 lm	
	ASD-LDLRK-GBR-4D1050-WH	740 lm	
	ASD-LDLRK-GBR-6D1530-WH	1,010 lm	
	ASD-LDLRK-GBR-6D1540-WH	1,040 lm	
	ASD-LDLRK-GBR-6D1550-WH	1,060 lm	
Color Temperature	3,000 K; 4,000 K; 5,000 K		
CRI	> 90		
Electrical System			
Input Voltage	120 V		
Max input current	ASD-LDLRK-GBR-4D1030-WH	0.1 A	
	ASD-LDLRK-GBR-4D1040-WH		
	ASD-LDLRK-GBR-4D1050-WH		
	ASD-LDLRK-GBR-6D1530-WH	0.15 A	
	ASD-LDLRK-GBR-6D1540-WH		
ASD-LDLRK-GBR-6D1550-WH			
Inrush current (Action time)	0.2 A (0.03 S)		
AC input range	min 108 V max 132 V		
Off State Power	0 W		
Power Consumption	ASD-LDLRK-GBR-4D1030-WH	10 W	
	ASD-LDLRK-GBR-4D1040-WH		
	ASD-LDLRK-GBR-4D1050-WH		
	ASD-LDLRK-GBR-6D1530-WH	15 W	
	ASD-LDLRK-GBR-6D1540-WH		
ASD-LDLRK-GBR-6D1550-WH			
Power Factor	> 0.9		
Output voltage	120 V		
LED Driver Class	DOB		
Dimming range			
10-100%			
Dimming compatible controls			
Brand	Lutron		Leviton
Models	DVW-603PGH-WH	CTCL-153PDH	0B33K1 6672
	MACL-153M-WH	CT-603PG	1F4205 6631
	DVCL-153P-WH	DV-600P	1E1205
	SLV-600P-WH	S-600P	6633-P
	DVVL-603P-IV	S-603P	6674
Regular and Voluntary Certifications			
5-year limited warranty	cETLus certified 4008281	Energy Star listed	

PACKAGE CONTENTS:

Description	Q-ty
LED Downlight Retrofit Kit Gimbal	1
Adapter (A)	1
Box	1
Cut sheet	2



INSTALLATION GUIDE

IMPORTANT SAFETY INFORMATION:

Please read all the instructions below before installation.

- ▶ Make sure that the supply voltage corresponds to the rated product voltage.
- ▶ The product must be installed by a qualified electrician in accordance with the National Electrical Code and corresponding local codes.
- ▶ If the product is damaged, do not use it.

⚠ WARNING

RISK OF PERSONAL INJURY – READ and follow all WARNINGS and installation instructions.

Keep or give to the owner for future reference.

Risk of cuts: Wear gloves to prevent cuts or abrasions when removing from carton, handling, installing, and maintaining this product.

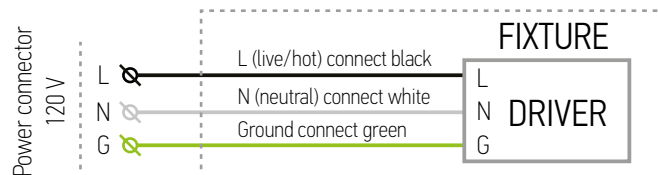
Risk of electric shock: This product must be installed in accordance with the applicable installation code by a person familiar with the construction and operation of the product and the hazards involved.

Risk of Fire: Minimum 194°F supply conductors. Consult a qualified electrician to ensure correct branch circuit conductor.

ASD® assumes no responsibility for claims arising out of improper or careless installation or handling of this product.

For recessed installation: Access above ceiling required. Inherently protected. Vapor barrier must be suitable for 194°F.

ELECTRICAL SCHEMATIC DIAGRAM:



INSTALLATION STEPS:

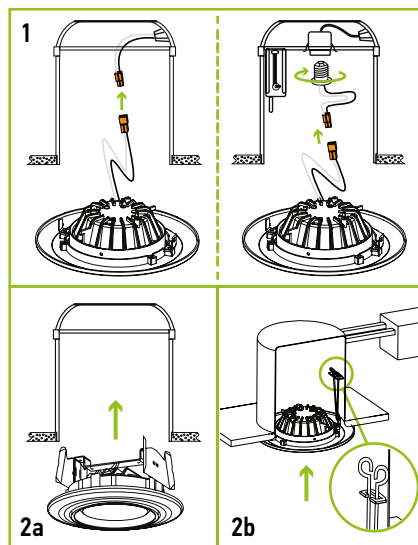
1. Turn off the main power and remove the existing trim and bulb from the Can. Use one of the options to connect the terminals.

2.a For Downlight 4"

Carefully route wires into the Can and gently push fixture up into the Can until sealed.

2.b For Downlight 6"

Squeeze the two sets of spring clip arms up toward each other. Route wires into the Can and hook both springs into the arm hook on the inside of Can. Release springs and gently push fixture up into the Can until sealed.



For most up-to-date spec sheets please refer to asd-lighting.com