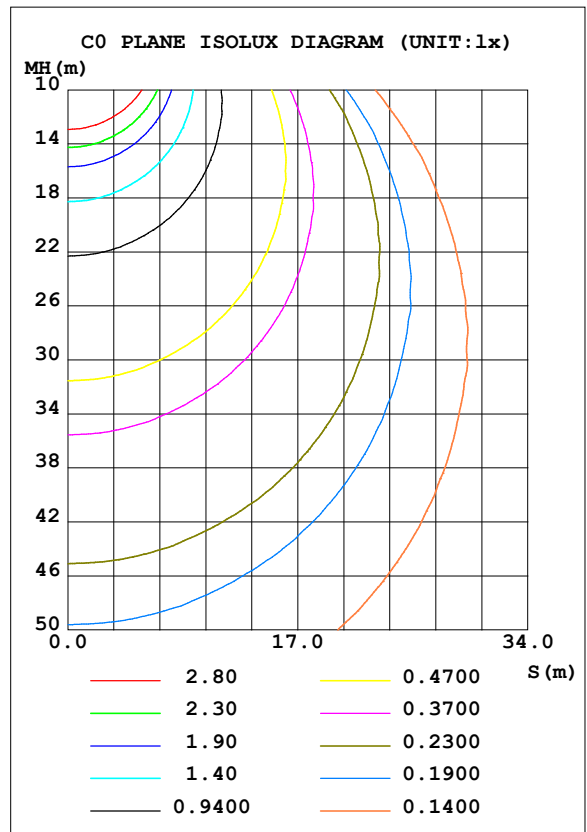
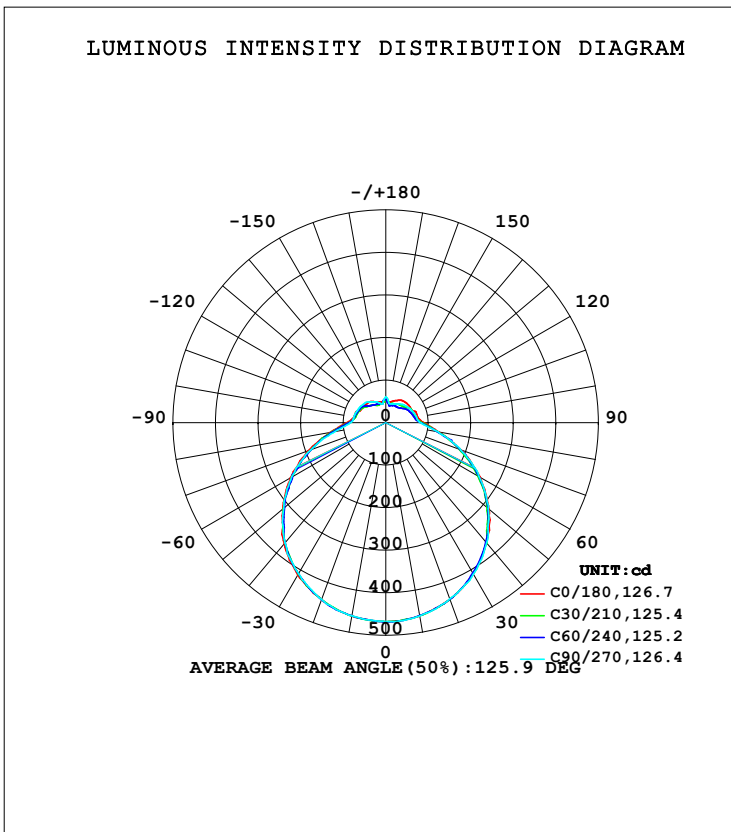


LUMINAIRE PHOTOMETRIC TEST REPORT

Test:U:120.07V I:0.2597A P:28.525W PF:0.9132 Freq:60.00Hz Lamp Flux:2053.66x1 lm		
NAME: ASD lighting Corp	TYPE:	WEIGHT:
SPEC.:ASD-LFC-SN-16D28-AC-5000K	DIM.:	SERIAL No.:
MFR.: ASD lighting Corp	SUR.:0.43*0.39	Shielding Angle:

DATA OF LAMP		PHOTOMETRIC DATA			
MODEL	ASD-LFC-SN-16D28-AC	Imax (cd)	468.8	S/MH (C0/180)	1.31
NOMINAL POWER (W)	--	LOR (%)	100.0	S/MH (C90/270)	1.31
RATED VOLTAGE (V)	--	TOTAL FLUX (lm)	2053.7	<input type="checkbox"/> UP, DN (C0-180)	10.0,39.9
NOMINAL FLUX (lm)	2053.66	CIE CLASS	SEMI-D.	<input type="checkbox"/> UP, DN (C180-360)	10.3,39.9
LAMPS INSIDE	1	<input type="checkbox"/> up (%)	20.2	CIBSE SHR NOM	1.50
TEST VOLTAGE (V)	--	<input type="checkbox"/> down (%)	79.8	CIBSE SHR MAX	1.50



C Range: 0 - 360DEG
 C Interval: 30.0DEG
 Test Speed: HIGH
 Temperature:25.3DEG
 Operators:admin
 Test Date:2022-03-16

Range: 0 - 180DEG
 Interval: 1.0DEG
 Test System:EVERFINE GO-2000B_V1 SYSTEM V2.00.411
 Humidity:65.0%
 Test Distance:8.780m [K=1.0000]
 Remarks:

ZONAL FLUX DIAGRAM

ZONAL FLUX DIAGRAM:

mm	C0	C45	C90	C135	C180	C225	C270	C315	mm	□ zone	□ total	%lum,lamp
10	461.6	460.6	461.9	460.7	461.6	461.2	461.0	461.1	0- 10	44.33	44.33	2.16,2.16
20	441.5	442.0	440.7	442.9	442.2	442.7	442.2	442.6	10- 20	128.1	172.4	8.39,8.39
30	410.6	409.6	411.5	413.1	413.9	410.7	410.1	411.0	20- 30	197.6	370.0	18,18
40	367.9	367.9	368.9	373.3	371.8	368.5	368.6	370.0	30- 40	245.3	615.3	30,30
50	316.1	311.8	314.3	320.3	316.4	312.5	313.5	315.8	40- 50	265.0	880.2	42.9,42.9
60	256.7	251.4	253.2	261.4	259.2	254.1	255.5	257.6	50- 60	256.1	1136	55.3,55.3
70	188.2	185.9	187.9	194.0	195.7	187.4	187.7	191.0	60- 70	221.3	1358	66.1,66.1
80	126.2	123.0	124.6	131.1	134.4	128.6	121.8	127.4	70- 80	166.5	1524	74.2,74.2
90	90.04	84.53	81.63	90.87	92.11	87.52	82.94	87.42	80- 90	113.8	1638	79.8,79.8
100	76.56	70.09	73.86	79.90	76.67	74.02	76.49	78.25	90-100	87.24	1725	84,84
110	75.60	66.88	70.09	76.69	75.14	70.96	74.01	75.69	100-110	78.57	1804	87.8,87.8
120	68.26	63.45	66.19	72.14	65.91	67.81	71.63	71.93	110-120	70.08	1874	91.2,91.2
130	67.76	55.01	61.52	61.54	64.39	60.01	68.49	61.26	120-130	58.55	1932	94.1,94.1
140	66.03	50.33	56.16	53.30	62.66	53.52	63.75	55.56	130-140	45.56	1978	96.3,96.3
150	61.17	48.45	50.52	48.59	57.33	48.61	56.96	53.89	140-150	33.97	2012	98,98
160	54.43	45.82	47.29	48.35	51.46	46.33	50.36	52.93	150-160	23.43	2035	99.1,99.1
170	49.01	42.90	46.54	47.73	49.85	45.74	44.96	47.34	160-170	13.58	2049	99.8,99.8
180	56.99	54.04	60.78	52.89	57.01	53.98	60.85	52.90	170-180	4.781	2054	100,100
DEG	LUMINOUS INTENSITY:cd									UNIT:lm		

Conical surface Flux(90deg): 747.24 lm

%lum = 36.4%

%lamp = 36.4%

Conical surface Flux(120deg): 1136.4 lm

%lum = 55.3%

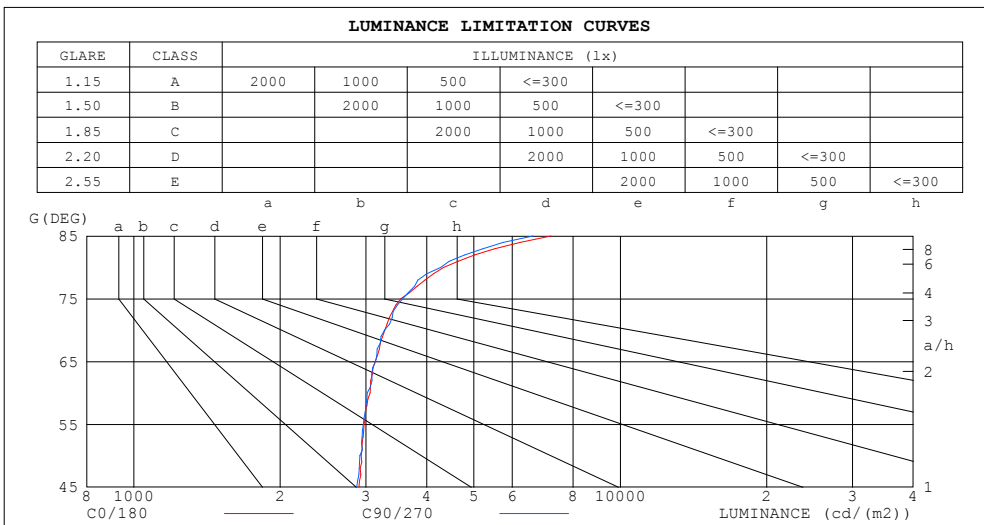
%lamp = 55.3%

C Range: 0 - 360DEG
 C Interval: 30.0DEG
 Test Speed: HIGH
 Temperature:25.3DEG
 Operators:admin
 Test Date:2022-03-16

□ Range: 0 - 180DEG
 □ Interval: 1.0DEG
 Test System:EVERFINE GO-2000B_V1 SYSTEM V2.00.411
 Humidity:65.0%
 Test Distance:8.780m [K=1.0000]
 Remarks:

LUMINANCE LIMITATION CURVES

Test:U:120.07V I:0.2597A P:28.525W PF:0.9132 Freq:60.00Hz Lamp Flux:2053.66x1 lm		
NAME: ASD lighting Corp	TYPE:	WEIGHT:
SPEC.:ASD-LFC-SN-16D28-AC-5000K	DIM.:	SERIAL No.:
MFR.: ASD lighting Corp	SUR.:0.43*0.39	Shielding Angle:



LUMINANCE cd/(m2)		
G (DEG)	C0/180	C90/270
85	7205	6613
80	4333	4278
75	3540	3570
70	3280	3277
65	3135	3140
60	3061	3020
55	2975	2963
50	2932	2916
45	2902	2872

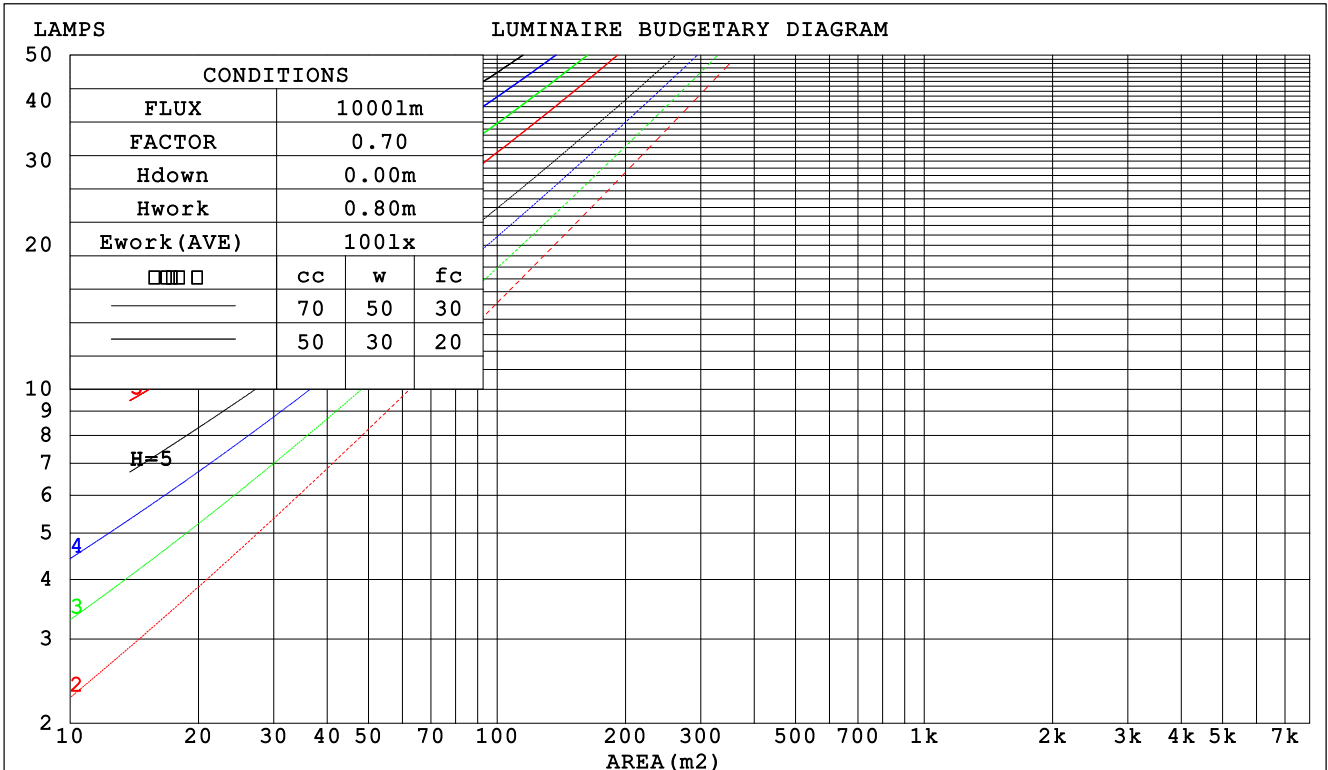
C Range: 0 - 360DEG
 C Interval: 30.0DEG
 Test Speed: HIGH
 Temperature:25.3DEG
 Operators:admin
 Test Date:2022-03-16

Range: 0 - 180DEG
 Interval: 1.0DEG
 Test System:EVERFINE GO-2000B_V1 SYSTEM V2.00.411
 Humidity:65.0%
 Test Distance:8.780m [K=1.0000]
 Remarks:

CU AND LUMINAIRE BUDGETARY ESTIMATE DIAGRAM

Test:U:120.07V I:0.2597A P:28.525W PF:0.9132 Freq:60.00Hz Lamp Flux:2053.66x1 lm		
NAME: ASD lighting Corp	TYPE:	WEIGHT:
SPEC.:ASD-LFC-SN-16D28-AC-5000K	DIM.:	SERIAL No.:
MFR.: ASD lighting Corp	SUR.:0.43*0.39	Shielding Angle:

□cc	80%			70%			50%			30%			10%			0
□w	50%	30%	10%	50%	30%	10%	50%	30%	10%	50%	30%	10%	50%	30%	10%	0
□fc	20%			20%			20%			20%			20%			0
RCR	RCR:Room Cavity Ratio						Coefficients of Utilization(CU)									
0.0	1.14	1.14	1.14	1.09	1.09	1.09	.00	.00	.00	.91	.91	.91	.83	.83	.83	.80
1.0	.97	.92	.87	.92	.88	.84	.84	.81	.77	.77	.74	.71	.70	.68	.66	.62
2.0	.83	.76	.69	.79	.73	.67	.72	.67	.62	.66	.62	.58	.60	.57	.54	.50
3.0	.72	.64	.57	.69	.61	.55	.63	.57	.51	.58	.52	.48	.53	.48	.45	.41
4.0	.64	.54	.47	.61	.52	.46	.56	.49	.43	.51	.45	.40	.47	.42	.38	.35
5.0	.56	.47	.40	.54	.46	.39	.50	.42	.37	.46	.39	.35	.42	.37	.33	.30
6.0	.51	.41	.35	.49	.40	.34	.45	.37	.32	.41	.35	.30	.38	.32	.28	.26
7.0	.46	.37	.31	.44	.36	.30	.40	.33	.28	.37	.31	.27	.34	.29	.25	.23
8.0	.41	.33	.27	.40	.32	.26	.37	.30	.25	.34	.28	.24	.31	.26	.22	.20
9.0	.38	.30	.24	.37	.29	.23	.34	.27	.22	.31	.25	.21	.29	.24	.20	.18
10.0	.35	.27	.22	.34	.26	.21	.31	.25	.20	.29	.23	.19	.27	.22	.18	.16



C Range: 0 - 360DEG
 C Interval: 30.0DEG
 Test Speed: HIGH
 Temperature:25.3DEG
 Operators:admin
 Test Date:2022-03-16

□ Range: 0 - 180DEG
 □ Interval: 1.0DEG
 Test System:EVERFINE GO-2000B_V1 SYSTEM V2.00.411
 Humidity:65.0%
 Test Distance:8.780m [K=1.0000]
 Remarks:

WEC AND CCEC

Test:U:120.07V I:0.2597A P:28.525W PF:0.9132 Freq:60.00Hz Lamp Flux:2053.66x1 lm		
NAME: ASD lighting Corp	TYPE:	WEIGHT:
SPEC.:ASD-LFC-SN-16D28-AC-5000K	DIM.:	SERIAL No.:
MFR.: ASD lighting Corp	SUR.:0.43*0.39	Shielding Angle:

<input type="checkbox"/> cc	80%			70%			50%			30%			10%			0
<input type="checkbox"/> w	50%	30%	10%	50%	30%	10%	50%	30%	10%	50%	30%	10%	50%	30%	10%	0
<input type="checkbox"/> fc	20%			20%			20%			20%			20%			0
RCR	RCR:Room Cavity Ratio						Wall Exitance Coefficients (WEC)									
0.0																
1.0	.357	.203	.064	.344	.196	.062	.319	.183	.058	.296	.171	.055	.275	.159	.051	
2.0	.316	.173	.053	.304	.167	.052	.282	.157	.049	.261	.146	.046	.241	.137	.043	
3.0	.284	.151	.045	.273	.146	.044	.253	.137	.042	.234	.128	.039	.216	.120	.037	
4.0	.258	.134	.039	.248	.130	.038	.229	.122	.036	.212	.114	.034	.196	.107	.032	
5.0	.235	.120	.035	.227	.116	.034	.210	.109	.032	.194	.102	.030	.179	.096	.029	
6.0	.217	.109	.031	.208	.105	.030	.193	.099	.029	.179	.093	.027	.165	.087	.026	
7.0	.200	.099	.028	.193	.096	.027	.179	.090	.026	.166	.085	.025	.153	.080	.023	
8.0	.186	.091	.026	.179	.088	.025	.166	.083	.024	.154	.078	.023	.143	.073	.021	
9.0	.174	.084	.023	.168	.082	.023	.156	.077	.022	.144	.072	.021	.134	.068	.020	
10.0	.163	.078	.022	.157	.076	.021	.146	.072	.020	.136	.067	.019	.126	.063	.018	

<input type="checkbox"/> cc	80%			70%			50%			30%			10%			0
<input type="checkbox"/> w	50%	30%	10%	50%	30%	10%	50%	30%	10%	50%	30%	10%	50%	30%	10%	0
<input type="checkbox"/> fc	20%			20%			20%			20%			20%			0
RCR	RCR:Room Cavity Ratio						Ceiling Cavity Exitance Coefficients (CCEC)									
0.0	.345	.345	.345	.295	.295	.295	.201	.201	.201	.116	.116	.116	.037	.037	.037	
1.0	.339	.311	.286	.290	.267	.246	.198	.184	.170	.114	.106	.099	.037	.034	.032	
2.0	.332	.288	.252	.284	.248	.218	.195	.172	.152	.112	.100	.089	.036	.032	.029	
3.0	.325	.272	.230	.278	.234	.199	.191	.163	.140	.110	.095	.082	.035	.031	.027	
4.0	.317	.259	.215	.272	.224	.187	.187	.156	.132	.108	.091	.078	.035	.030	.026	
5.0	.310	.249	.205	.266	.216	.178	.183	.151	.126	.106	.089	.075	.034	.029	.025	
6.0	.302	.242	.198	.260	.209	.172	.179	.146	.122	.104	.086	.072	.034	.028	.024	
7.0	.296	.235	.193	.254	.204	.168	.176	.143	.119	.102	.084	.071	.033	.028	.023	
8.0	.289	.229	.188	.249	.199	.164	.172	.140	.117	.100	.082	.069	.032	.027	.023	
9.0	.283	.225	.185	.244	.195	.162	.169	.137	.115	.098	.081	.068	.032	.027	.023	
10.0	.277	.221	.183	.239	.192	.160	.166	.135	.113	.097	.080	.068	.031	.026	.022	

C Range: 0 - 360DEG
 C Interval: 30.0DEG
 Test Speed: HIGH
 Temperature:25.3DEG
 Operators:admin
 Test Date:2022-03-16

Range: 0 - 180DEG
 Interval: 1.0DEG
 Test System:EVERFINE GO-2000B_V1 SYSTEM V2.00.411
 Humidity:65.0%
 Test Distance:8.780m [K=1.0000]
 Remarks:

UGR(Unified Glare Rating) Table

Test:U:120.07V I:0.2597A P:28.525W PF:0.9132 Freq:60.00Hz Lamp Flux:2053.66x1 lm										
NAME: ASD lighting Corp					TYPE:			WEIGHT:		
SPEC.:ASD-LFC-SN-16D28-AC-5000K					DIM.:			SERIAL No.:		
MFR.: ASD lighting Corp					SUR.:0.43*0.39			Shielding Angle:		
ceiling/cavity	0.7	0.7	0.5	0.5	0.3	0.7	0.7	0.5	0.5	0.3
walls	0.5	0.3	0.5	0.3	0.3	0.5	0.3	0.5	0.3	0.3
working plane	0.2	0.2	0.2	0.2	0.2	0.2	0.2	0.2	0.2	0.2
Room dimensions	Viewed crosswise					Viewed endwise				
x = 2H y = 2H	15.4	16.7	15.9	17.3	17.9	15.4	16.7	16.0	17.3	17.9
3H	17.4	18.6	17.9	19.2	19.8	17.4	18.6	18.0	19.2	19.8
4H	18.4	19.5	18.9	20.1	20.8	18.4	19.5	19.0	20.1	20.8
6H	19.4	20.5	20.0	21.1	21.7	19.4	20.4	20.0	21.0	21.7
8H	19.9	21.0	20.5	21.6	22.3	19.9	20.9	20.5	21.5	22.2
12H	20.6	21.6	21.2	22.2	22.9	20.4	21.4	21.1	22.1	22.8
4H 2H	16.1	17.2	16.6	17.8	18.4	16.1	17.2	16.7	17.8	18.5
3H	18.2	19.2	18.9	19.9	20.6	18.3	19.3	18.9	19.9	20.6
4H	19.4	20.3	20.0	20.9	21.7	19.4	20.3	20.1	21.0	21.7
6H	20.6	21.4	21.2	22.1	22.8	20.6	21.4	21.2	22.0	22.8
8H	21.2	22.0	21.9	22.7	23.5	21.2	21.9	21.9	22.6	23.4
12H	22.0	22.7	22.7	23.4	24.2	21.8	22.5	22.5	23.2	24.1
8H 4H	19.8	20.6	20.5	21.2	22.0	19.8	20.6	20.5	21.3	22.1
6H	21.2	21.9	22.0	22.6	23.4	21.2	21.8	21.9	22.6	23.4
8H	22.1	22.6	22.8	23.4	24.2	22.0	22.6	22.7	23.3	24.2
12H	23.0	23.5	23.8	24.3	25.2	22.9	23.4	23.6	24.1	25.0
12H 4H	19.9	20.6	20.6	21.3	22.1	19.9	20.6	20.6	21.3	22.1
6H	21.4	22.0	22.1	22.7	23.6	21.4	21.9	22.1	22.7	23.5
8H	22.3	22.8	23.1	23.6	24.5	22.3	22.8	23.0	23.5	24.4
Variations with the observer position at spacings:										
S = 1.0H	+ 0.1 / - 0.1					+ 0.1 / - 0.1				
1.5H	+ 0.2 / - 0.3					+ 0.2 / - 0.3				
2.0H	+ 0.2 / - 0.3					+ 0.2 / - 0.3				

CIE Pub.117, 2054 lm Total Lamp Luminous Flux Corrected (8log(F/F0) = 2.5)
 Area: 0.1677 m2

C Range: 0 - 360DEG
 C Interval: 30.0DEG
 Test Speed: HIGH
 Temperature:25.3DEG
 Operators:admin
 Test Date:2022-03-16

Range: 0 - 180DEG
 Interval: 1.0DEG
 Test System:EVERFINE GO-2000B_V1 SYSTEM V2.00.411
 Humidity:65.0%
 Test Distance:8.780m [K=1.0000]
 Remarks:

UTILIZATION FACTORS TABLE

Test:U:120.07V I:0.2597A P:28.525W PF:0.9132 Freq:60.00Hz Lamp Flux:2053.66x1 lm		
NAME: ASD lighting Corp	TYPE:	WEIGHT:
SPEC.:ASD-LFC-SN-16D28-AC-5000K	DIM.:	SERIAL No.:
MFR.: ASD lighting Corp	SUR.:0.43*0.39	Shielding Angle:

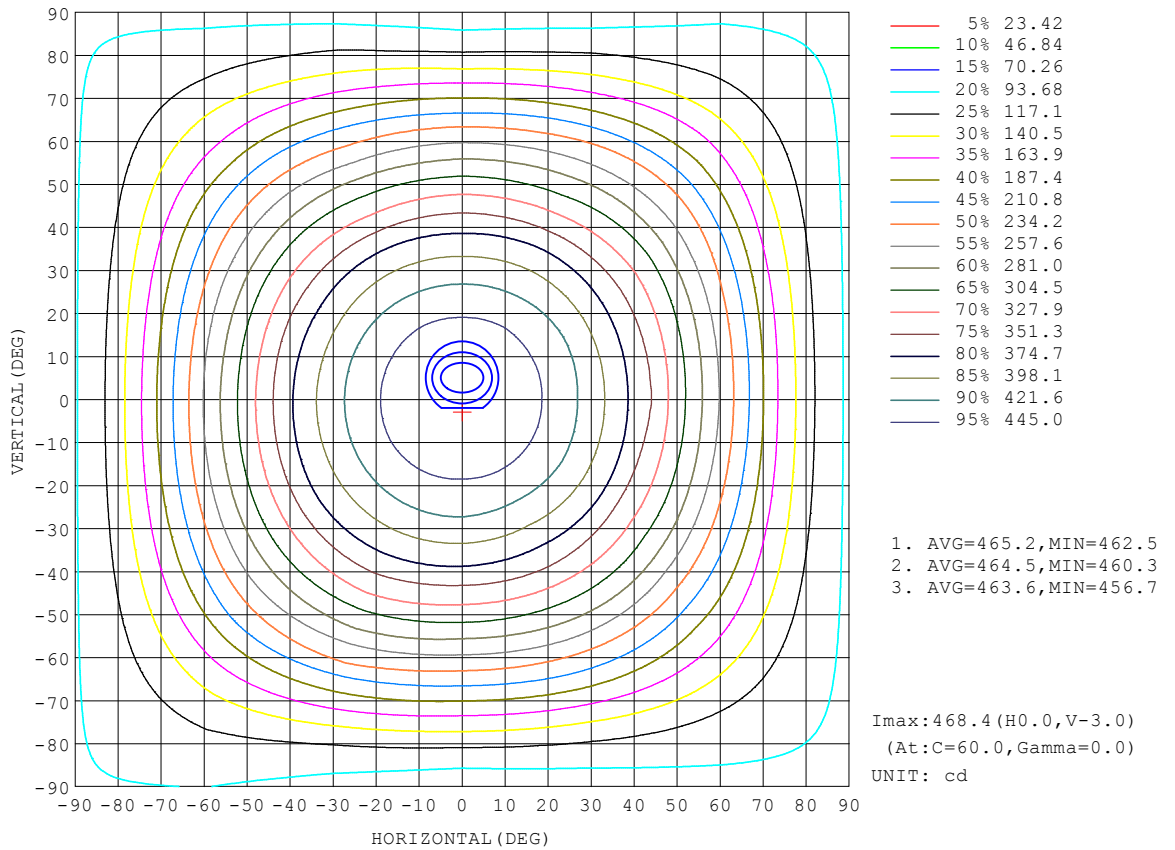
REFLECTANCE										
Ceiling	0.8	0.8	0.8	0.7	0.7	0.7	0.5	0.5	0.5	0
Walls	0.7	0.5	0.3	0.7	0.5	0.3	0.7	0.5	0.3	0
Working plane	0.2	0.2	0.2	0.2	0.2	0.2	0.2	0.2	0.2	0
ROOM INDEX	UTILIZATION FACTORS (PERCENT) $k(RI) \times RCR = 5$									
k = 0.60	48	36	29	47	36	29	45	35	28	22
0.80	58	45	37	56	44	37	53	43	36	28
1.00	66	53	45	64	52	44	60	52	43	34
1.25	73	61	52	70	59	51	66	56	49	40
1.50	78	66	58	75	64	57	70	61	54	44
2.00	85	75	67	82	72	65	76	68	62	50
2.50	89	80	72	86	77	70	79	72	66	53
3.00	93	84	77	89	81	75	82	76	71	57
4.00	98	90	84	93	87	81	86	81	76	61
5.00	101	94	89	96	91	86	88	84	80	64
ROOM INDEX	UF(total)									Direct
According to DIN EN 13032-2 2004			Suspended				SHRNOM = 1.25			

C Range: 0 - 360DEG
 C Interval: 30.0DEG
 Test Speed: HIGH
 Temperature:25.3DEG
 Operators:admin
 Test Date:2022-03-16

Range: 0 - 180DEG
 Interval: 1.0DEG
 Test System:EVERFINE GO-2000B_V1 SYSTEM V2.00.411
 Humidity:65.0%
 Test Distance:8.780m [K=1.0000]
 Remarks:

ISOCANDELA DIAGRAM

Test:U:120.07V I:0.2597A P:28.525W PF:0.9132 Freq:60.00Hz Lamp Flux:2053.66x1 lm		
NAME: ASD lighting Corp	TYPE:	WEIGHT:
SPEC.:ASD-LFC-SN-16D28-AC-5000K	DIM.:	SERIAL No.:
MFR.: ASD lighting Corp	SUR.:0.43*0.39	Shielding Angle:

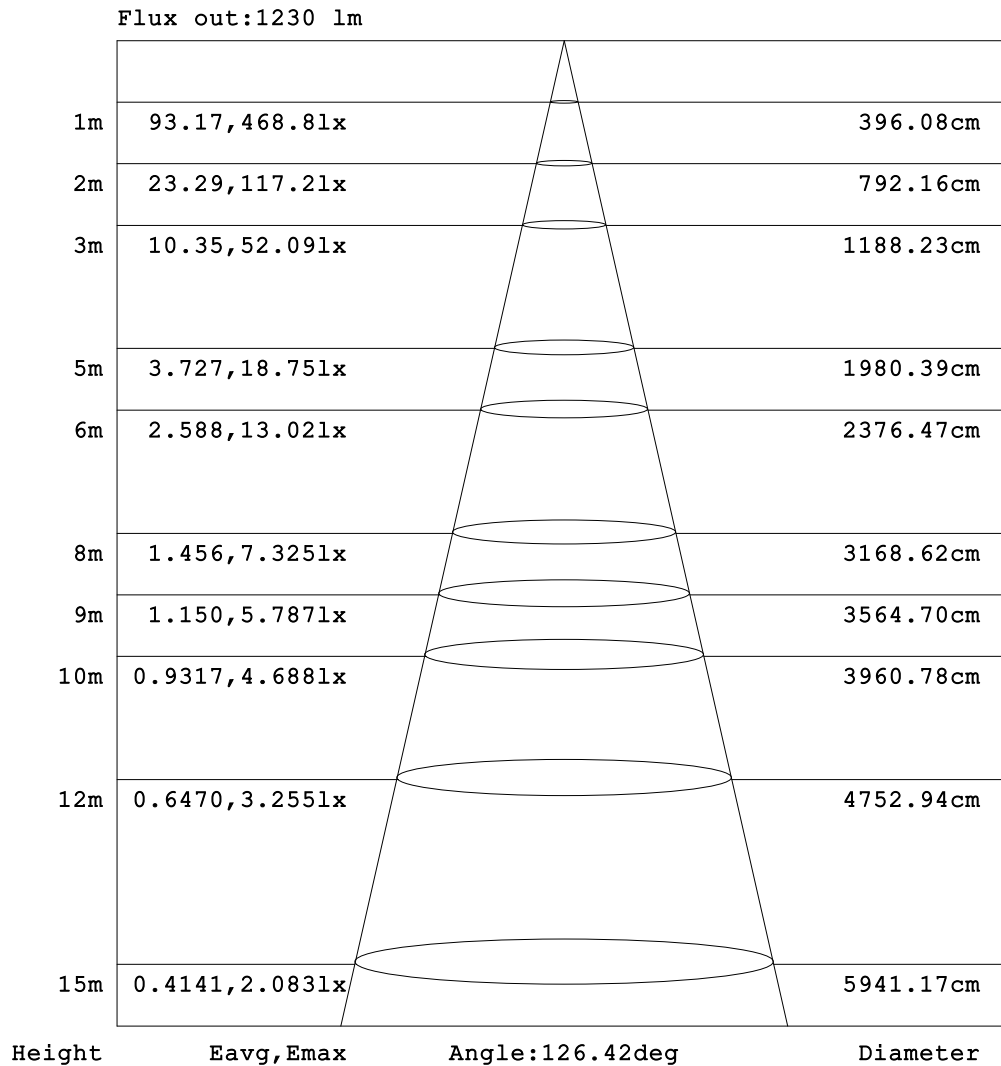


C Range: 0 - 360DEG
 C Interval: 30.0DEG
 Test Speed: HIGH
 Temperature: 25.3DEG
 Operators: admin
 Test Date: 2022-03-16

Range: 0 - 180DEG
 Interval: 1.0DEG
 Test System: EVERFINE GO-2000B_V1 SYSTEM V2.00.411
 Humidity: 65.0%
 Test Distance: 8.780m [K=1.0000]
 Remarks:

AAI Figure

Test:U:120.07V I:0.2597A P:28.525W PF:0.9132 Freq:60.00Hz Lamp Flux:2053.66x1 lm		
NAME: ASD lighting Corp	TYPE:	WEIGHT:
SPEC.:ASD-LFC-SN-16D28-AC-5000K	DIM.:	SERIAL No.:
MFR.: ASD lighting Corp	SUR.:0.43*0.39	Shielding Angle:



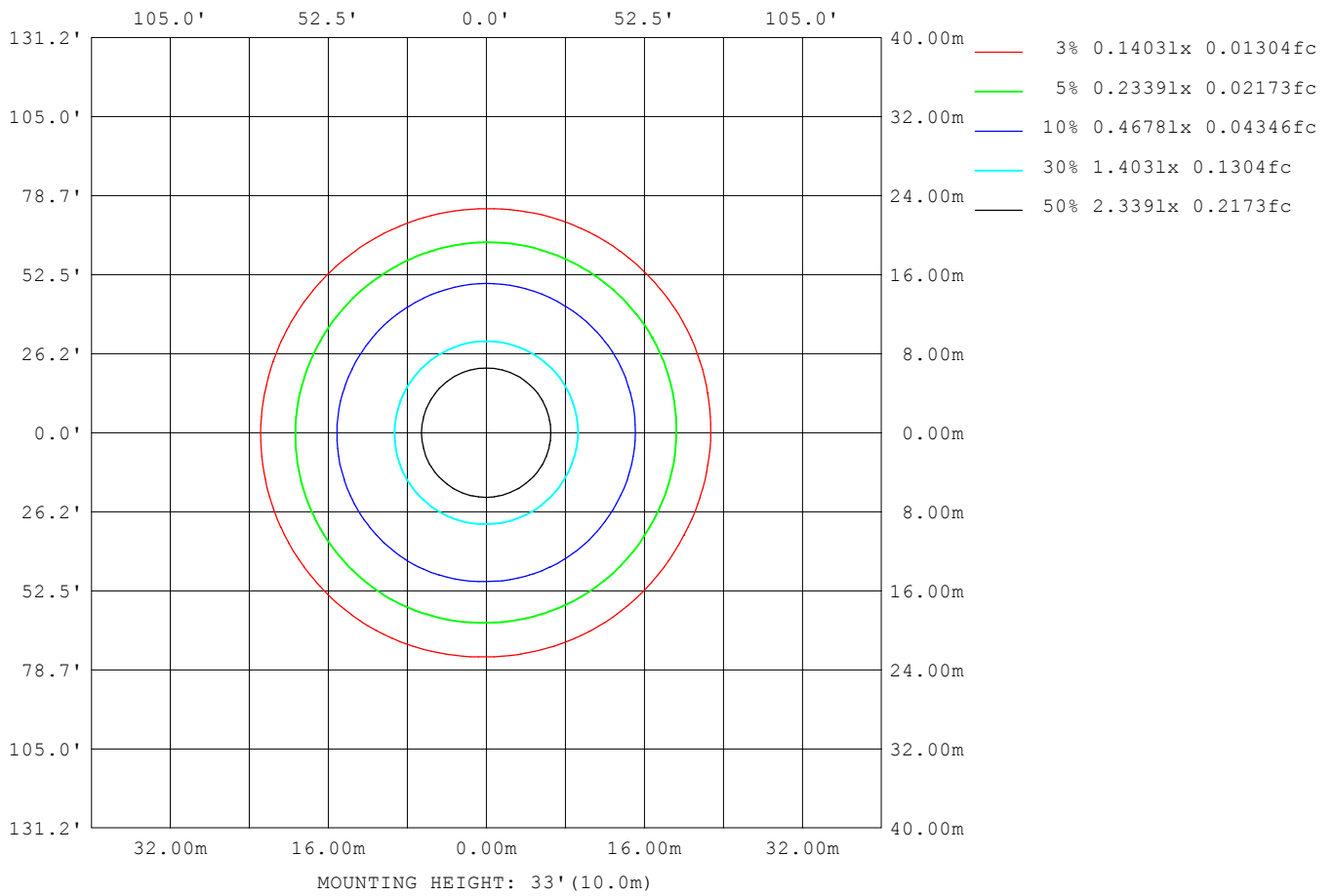
Note:The Curves indicate the illuminated area and the average illumination when the luminaire is at different distance.

C Range: 0 - 360DEG
 C Interval: 30.0DEG
 Test Speed: HIGH
 Temperature:25.3DEG
 Operators:admin
 Test Date:2022-03-16

Range: 0 - 180DEG
 Interval: 1.0DEG
 Test System:EVERFINE GO-2000B_V1 SYSTEM V2.00.411
 Humidity:65.0%
 Test Distance:8.780m [K=1.0000]
 Remarks:

ISOLUX DIAGRAM

Test:U:120.07V I:0.2597A P:28.525W PF:0.9132 Freq:60.00Hz Lamp Flux:2053.66x1 lm		
NAME: ASD lighting Corp	TYPE:	WEIGHT:
SPEC.:ASD-LFC-SN-16D28-AC-5000K	DIM.:	SERIAL No.:
MFR.: ASD lighting Corp	SUR.:0.43*0.39	Shielding Angle:



C Range: 0 - 360DEG
 C Interval: 30.0DEG
 Test Speed: HIGH
 Temperature:25.3DEG
 Operators:admin
 Test Date:2022-03-16

Range: 0 - 180DEG
 Interval: 1.0DEG
 Test System:EVERFINE GO-2000B_V1 SYSTEM V2.00.411
 Humidity:65.0%
 Test Distance:8.780m [K=1.0000]
 Remarks:

LED Avg.L Report

Test:U:120.07V I:0.2597A P:28.525W PF:0.9132 Freq:60.00Hz Lamp Flux:2053.66x1 lm		
NAME: ASD lighting Corp	TYPE:	WEIGHT:
SPEC.:ASD-LFC-SN-16D28-AC-5000K	DIM.:	SERIAL No.:
MFR.: ASD lighting Corp	SUR.:0.43*0.39	Shielding Angle:

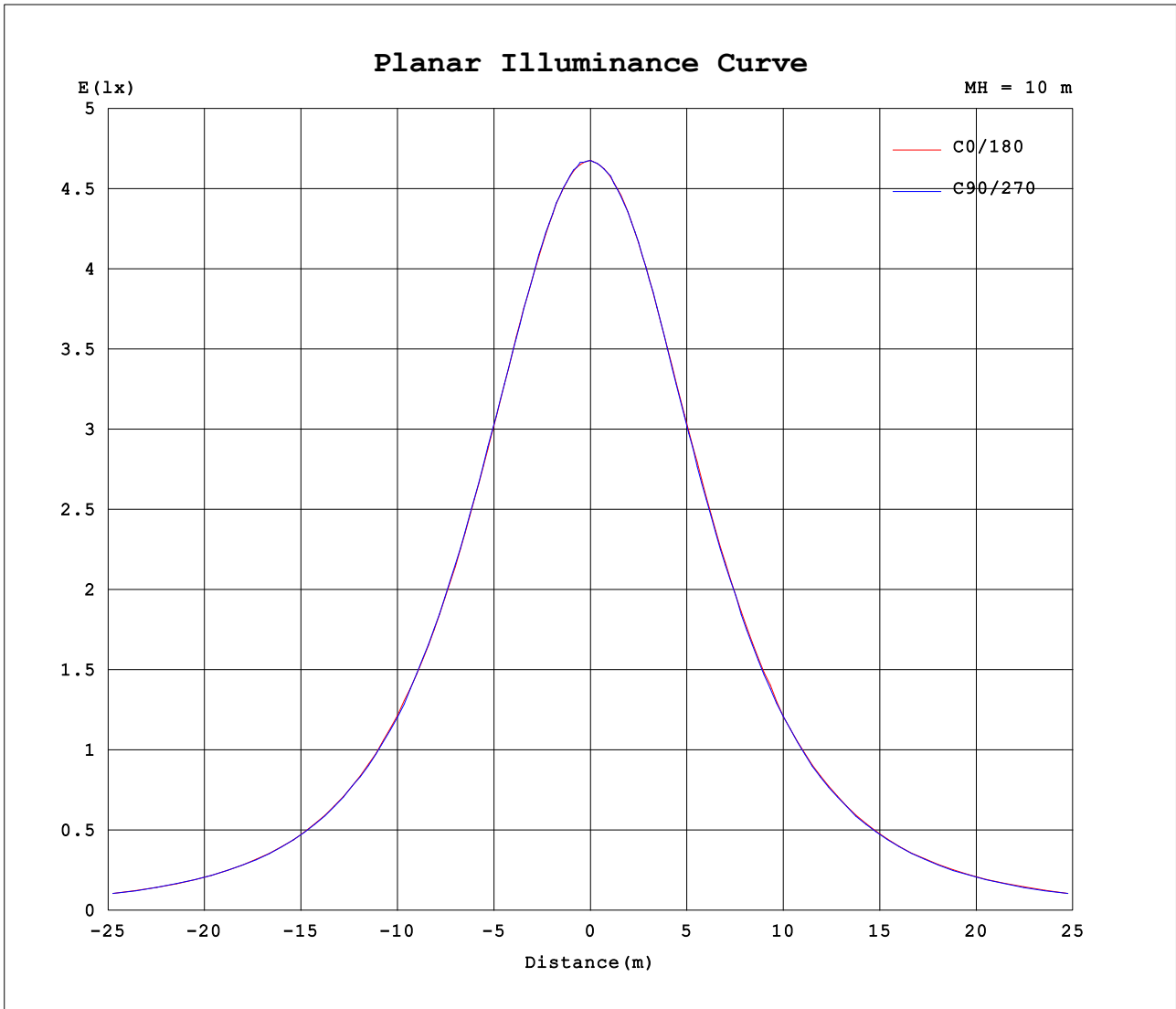
AvgL	cd/m2
L_0~180 (65) av	3165
L_0~180 (75) av	3630
L_0~180 (85) av	7340
L_90~270 (65) av	3141
L_90~270 (75) av	3579
L_90~270 (85) av	6605
L_45 (65) av	3166
L_45 (75) av	3659
L_45 (85) av	7086

Standard: GB/T 29293-2012

C Range: 0 - 360DEG
 C Interval: 30.0DEG
 Test Speed: HIGH
 Temperature:25.3DEG
 Operators:admin
 Test Date:2022-03-16

Range: 0 - 180DEG
 Interval: 1.0DEG
 Test System:EVERFINE GO-2000B_V1 SYSTEM V2.00.411
 Humidity:65.0%
 Test Distance:8.780m [K=1.0000]
 Remarks:

Planar Illuminance Curve



C Range: 0 - 360DEG
C Interval: 30.0DEG
Test Speed: HIGH
Temperature:25.3DEG
Operators:admin
Test Date:2022-03-16

Range: 0 - 180DEG
 Interval: 1.0DEG
Test System:EVERFINE GO-2000B_V1 SYSTEM V2.00.411
Humidity:65.0%
Test Distance:8.780m [K=1.0000]
Remarks:

LUMINOUS DISTRIBUTION INTENSITY DATA

Test:U:120.07V I:0.2597A P:28.525W PF:0.9132 Freq:60.00Hz Lamp Flux:2053.66x1 lm		
NAME: ASD lighting Corp	TYPE:	WEIGHT:
SPEC.:ASD-LFC-SN-16D28-AC-5000K	DIM.:	SERIAL No.:
MFR.: ASD lighting Corp	SUR.:0.43*0.39	Shielding Angle:

Table--1

UNIT: cd

C (DEG) □ (DEG)	0	30	60	90	120	150	180	210	240	270	300	330							
0	468	468	469	468	468	467	468	468	469	468	468	467							
5	466	466	467	467	467	465	466	466	466	465	466	466							
10	462	461	460	462	460	461	462	461	461	461	461	461							
15	452	453	452	454	452	454	454	453	455	454	454	453							
20	441	442	442	441	443	443	442	442	443	442	443	442							
25	427	428	427	428	429	431	429	428	429	427	428	429							
30	411	411	409	412	412	414	414	411	410	410	411	411							
35	390	390	389	393	394	394	395	390	392	392	392	392							
40	368	370	366	369	373	374	372	369	368	369	371	369							
45	344	338	341	341	348	346	342	342	339	342	340	346							
50	316	310	313	314	321	319	316	315	310	314	313	319							
55	286	283	285	285	294	292	287	284	282	285	286	289							
60	257	250	253	253	261	262	259	255	253	256	257	259							
65	222	218	220	223	233	229	226	221	221	223	227	226							
70	188	185	187	188	193	195	196	188	187	188	190	192							
75	154	153	161	155	159	162	161	160	156	156	159	158							
80	126	124	122	125	129	133	134	130	127	122	125	130							
85	105	102	98.9	96.7	102	110	109	105	103	96.4	99.9	106							
90	90.0	86.5	82.5	81.6	87.7	94.1	92.1	88.0	87.0	82.9	84.6	90.2							
95	80.8	76.5	73.0	75.7	81.3	85.2	81.5	77.9	78.5	77.7	79.1	82.3							
100	76.6	71.4	68.8	73.9	78.7	81.1	76.7	73.0	75.0	76.5	77.3	79.2							
105	75.5	69.8	66.7	72.3	76.9	79.6	75.6	71.4	73.6	75.6	76.0	78.2							
110	75.6	69.3	64.5	70.1	75.1	78.3	75.1	70.1	71.8	74.0	74.3	77.1							
115	68.1	68.5	62.2	68.0	73.5	76.5	66.7	68.6	70.4	72.4	72.8	75.7							
120	68.3	66.9	60.0	66.2	71.7	72.6	65.9	66.5	69.2	71.6	71.1	72.8							
125	68.2	62.3	56.7	63.8	67.6	66.4	65.3	62.9	66.4	70.0	67.2	66.6							
130	67.8	57.6	52.4	61.5	61.5	61.6	64.4	58.8	61.3	68.5	61.4	61.1							
135	67.1	55.6	48.9	59.6	55.6	58.7	63.5	56.1	56.2	67.2	56.9	59.2							
140	66.0	54.0	46.7	56.2	51.2	55.4	62.7	53.8	53.3	63.7	53.7	57.4							
145	64.3	53.2	45.2	53.8	48.4	52.2	61.0	50.7	51.6	60.0	51.8	55.4							
150	61.2	51.6	45.3	50.5	47.6	49.6	57.3	47.7	49.5	57.0	52.7	55.0							
155	57.8	48.7	44.9	48.5	47.7	48.8	53.4	45.4	48.4	54.1	53.4	54.7							
160	54.4	48.3	43.3	47.3	48.3	48.4	51.5	45.1	47.5	50.4	51.1	54.8							
165	51.1	46.5	41.9	46.3	47.8	47.8	50.4	46.0	46.8	46.6	47.9	54.1							
170	49.0	43.2	42.6	46.5	47.6	47.8	49.9	46.7	44.8	45.0	44.3	50.4							
175	53.0	51.8	48.3	56.2	57.1	49.3	52.8	49.8	54.8	54.0	45.8	49.8							
180	57.0	52.5	55.6	60.8	55.4	50.4	57.0	52.5	55.5	60.9	55.5	50.3							

C Range: 0 - 360DEG
 C Interval: 30.0DEG
 Test Speed: HIGH
 Temperature:25.3DEG
 Operators:admin
 Test Date:2022-03-16

□ Range: 0 - 180DEG
 □ Interval: 1.0DEG
 Test System:EVERFINE GO-2000B_V1 SYSTEM V2.00.411
 Humidity:65.0%
 Test Distance:8.780m [K=1.0000]
 Remarks: