



LED STRIPLIGHT FIXTURE WITH Q-BASE

► **DESIGN** - LED STRIPLIGHT FIXTURE WITH Q-BASE has a narrow, low-profile design. Durable commercial grade housing resistant to rust and impact along with an anti-glare PMMA lens provide many years of use. It is designed to operate on 120-277V circuits with a 0-10V dimmable driver.

► **SENSOR BASE** - The fixture has a built-in motion sensor base, allowing you to install the microwave motion sensor, which will turn off the fixture automatically when no motion is detected.

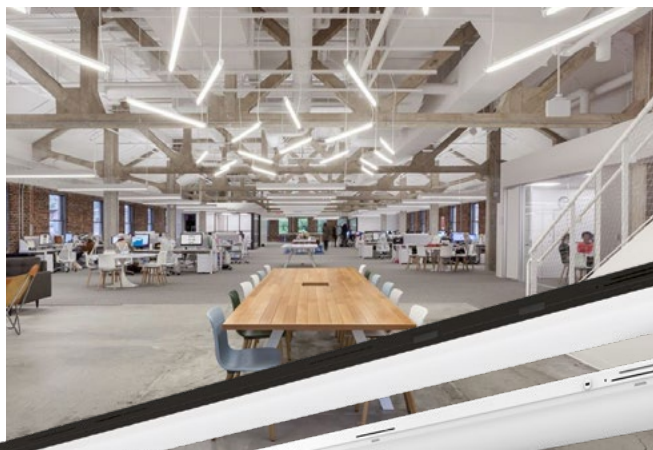
► **BATTERY BACK-UP** - The built-in battery back-up provide 90 minutes of power in case of emergency.

► **COLOR AND POWER SELECTABLE** - You can choose either a 3,500K neutral white, 4,000K cool white or 5,000K daylight color temperature, and change the power with a simple switch.

► **APPLICATION** - Perfect commercial or industrial solution for office buildings, schools, hospitals, hallways, stairwells, workshops, and many other applications. It is also Damp Locations rated.

► **ADVANTAGES** - With calculated lifespan up to 156,000 hours, these fixtures are made to last decades under normal operation! ASD provides a 5-year limited warranty along with UL and DLC Standard certifications to guarantee top quality products and safety!

Catalog number	
Notes	
Type	



Finish:	White
	Black

Model	Type	Watts	Voltage	Dimmable	Lumens	CCT	Finish	Dimensions (LxWxH)	Cord	Option	
LSF7A											
ASD-LSF7A-2A25	2 ft	15/20/25W	120-277 V	0-10 V	up to 3,319 lm	3CCT (3,500/4,000/5,000 K)	White	22-3/16" x 2-13/16" x 3-1/16"	1.5 ft	-	
ASD-LSF7A-4A40	4 ft	25/30/40W	120-277 V	0-10 V	up to 5,482 lm	3CCT (3,500/4,000/5,000 K)	White	47-5/16" x 2-13/16" x 3-1/16"	1.5 ft	-	
ASD-LSF7A-4A40-BK	4 ft	25/30/40W	120-277 V	0-10 V	up to 5,482 lm	3CCT (3,500/4,000/5,000 K)	Black	47-5/16" x 2-13/16" x 3-1/16"	1.5 ft	-	
ASD-LSF7A-8A90	8 ft	65/75/90W	120-277 V	0-10 V	up to 12,394 lm	3CCT (3,500/4,000/5,000 K)	White	94-3/16" x 2-13/16" x 3-1/16"	1.5 ft	-	
ASD-LSF7A-8A90-BK	8 ft	65/75/90W	120-277 V	0-10 V	up to 12,394 lm	3CCT (3,500/4,000/5,000 K)	Black	94-3/16" x 2-13/16" x 3-1/16"	1.5 ft	-	
LSF7A-EM WITH BATTERY BACK-UP											
ASD-LSF7A-2A25-EM	2 ft	15/20/25W	120-277 V	0-10 V	up to 3,414 lm	3CCT (3,500/4,000/5,000 K)	White	24-7/16" x 2-15/16" x 3-1/16"	1.5 ft	4W Battery back-up	
ASD-LSF7A-4A40-EM	4 ft	25/30/40W	120-277 V	0-10 V	up to 5,482 lm	3CCT (3,500/4,000/5,000 K)	White	47-5/16" x 2-13/16" x 3-1/16"	1.5 ft	10W Battery back-up	
ASD-LSF7A-4A40-EM-BK	4 ft	25/30/40W	120-277 V	0-10 V	up to 5,482 lm	3CCT (3,500/4,000/5,000 K)	Black	47-5/16" x 2-13/16" x 3-1/16"	1.5 ft	10W Battery back-up	
ASD-LSF7A-8A90-EM	8 ft	65/75/90W	120-277 V	0-10 V	up to 12,394 lm	3CCT (3,500/4,000/5,000 K)	White	94-3/16" x 2-13/16" x 3-1/16"	1.5 ft	15W Battery back-up	
ASD-LSF7A-8A90-EM-BK	8 ft	65/75/90W	120-277 V	0-10 V	up to 12,394 lm	3CCT (3,500/4,000/5,000 K)	Black	94-3/16" x 2-13/16" x 3-1/16"	1.5 ft	15W Battery back-up	
SENSORS AND REMOTE											
ASD-08MW-WH	Microwave motion sensor with audio-jack								2-5/8" x 3/4" x 1"		-
ASD-06RC	Remote control for motion sensor								5-11/16" x 1-3/4" x 13/16"		-

For detailed luminous flux information please refer to Annex 1, page 6.

For most up-to-date spec sheets please refer to asd-lighting.com



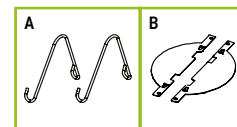
LED STRIPLIGHT FIXTURE WITH Q-BASE

PRODUCT SPECIFICATIONS:

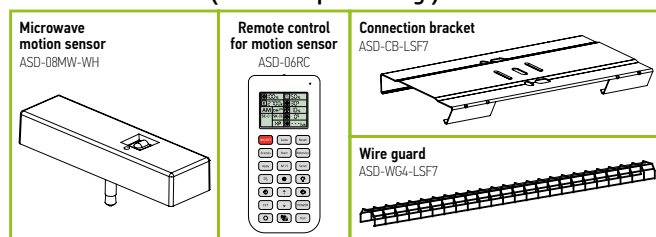
Construction & Materials			
Housing	Steel		
Lens	PC		
Finish	White, Black		
Weight	ASD-LSF7A-2A25	2.7 lbs (1.2 kg)	
	ASD-LSF7A-4A40	4.4 lbs (2 kg)	
	ASD-LSF7A-4A40-BK		
	ASD-LSF7A-8A90	8.6 lbs (3.9 kg)	
	ASD-LSF7A-8A90-BK		
	ASD-LSF7A-2A25-EM	5.7 lbs (2.6 kg)	
	ASD-LSF7A-4A40-EM	6.6 lbs (3 kg)	
	ASD-LSF7A-4A40-EM-BK		
	ASD-LSF7A-8A90-EM	10.8 lbs (4.9 kg)	
ASD-LSF7A-8A90-EM-BK			
Environmental system			
Work environment	Suitable for Damp Locations		
Operating temperature	-4°F to 122°F (-20°C to 50°C)		
L-70 Life	R > 72,000 hrs; C > 153,000 hrs for 2 ft models: R > 60,000 hrs; C > 156,000 hrs		
Optical system			
Color temperature	3CCT switch (3,500/4,000/5,000 K), 3,000 K by default		
CRI	> 80		
Electrical system			
Input voltage	120-277 V		
Max input current	ASD-LSF7A-2A25	0.25 A	
	ASD-LSF7A-4A40	0.39 A	
	ASD-LSF7A-4A40-BK		
	ASD-LSF7A-8A90	0.39 A	
	ASD-LSF7A-8A90-BK		
	ASD-LSF7A-2A25-EM	0.39 A	
	ASD-LSF7A-4A40-EM	0.8 A	
	ASD-LSF7A-4A40-EM-BK		
	ASD-LSF7A-8A90-EM	0.8 A	
Inrush current (Action time)	45 A (1 S)	for 8 ft models: 50 A (1 S)	
Off state power	0W		
Power consumption	for 2 ft models: 15/20/25W		
	for 4 ft models: 25/30/40W		
	for 8 ft models: 65/75/90W		
Power factor	> 0.9		
Output voltage	26-42 V		
Max output current	ASD-LSF7A-2A25	0.35 A/0.45 A/0.55 A	
	ASD-LSF7A-4A40	0.54 A/0.65 A/0.85 A	
	ASD-LSF7A-4A40-BK		
	ASD-LSF7A-8A90	1.45 A/1.7 A/1.95 A	
	ASD-LSF7A-8A90-BK		
	ASD-LSF7A-2A25-EM	0.85 A/0.65 A/0.54 A	
	ASD-LSF7A-4A40-EM	0.54 A/0.65 A/0.85 A	
	ASD-LSF7A-4A40-EM-BK		
	ASD-LSF7A-8A90-EM	1.45 A/1.7 A/1.95 A	
Surge protection DM/CM	1 kV / 2 kV		
	for ASD-LSF7A-2A25 model: 2.5 kV / 2.5 kV		
Dimming compatible controls			
Brand	Eaton	Lutron	Cooper
Models	DF10P	SF10P	DIVA DVSTV ARROW HART
Regular and voluntary certifications			
5-year limited warranty			
DesignLights Consortium (DLC) listed (Classification: Premium/Standard)			
Main: Indoor/Outdoor luminaires; General application: Low/Mid output/Linear ambient;			
Primary use: Stairwell and passageway/Direct linear ambient luminaires			
UL certified E473804			

PACKAGE CONTENTS:

Description	Q-ty
LED Striplight Fixture with Q-base	1
V Hook (A)	2
J-box mounting plate (B)	2
Box	1



ACCESSORIES (sold separately):



ACCESSORY COMPATIBILITY LIST:

Accessories		Models			
		Microwave motion sensor ASD-08MW-WH	Connection bracket ASD-CB-LSF7	Wire guard ASD-WG4-LSF7	
ASD-LSF7	2 ft	•	•	•	
	4 ft	•	•	•	
	8 ft	•	•	•	
ASD-LSF7-EM	2 ft	•	•	•	
	4 ft	•	•	•	
	8 ft	•	•	•	

BUILT-IN BACK-UP BATTERY INFORMATION

Model	Battery watts	Lumens in emergency mode	Battery capacity	Emergency mode	Charging time
ASD-LSF7A-4A40-EM	10W	1,794 lm	2,000 mAh	≥ 90 min	≥ 24 hours
ASD-LSF7A-8A90-EM	15W	2,572 lm	2,000 mAh	≥ 90 min	≥ 24 hours

Test switch	Emergency mode	Charging or recharging
● OFF	● OFF	● ON

- Indicator light is ON: Battery back-up fully charged or recharging and device is using circuit power.
- Indicator light is OFF: Device is using battery back-up power.
- To test the battery back-up press the test switch one time. To turn off the emergency power state press test switch one more time.

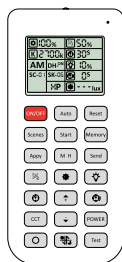
For most up-to-date spec sheets please refer to asd-lighting.com



LED STRIPLIGHT FIXTURE WITH Q-BASE

MOTION SENSOR INFORMATION

REMOTE CONTROL **ASD-06RC** sold separately:



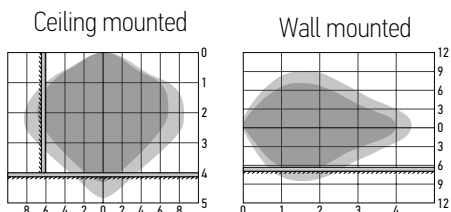
Button	Remarks	Button	Remarks	Button	Remarks
ON/OFF	ON/OFF Turn the sensor ON/OFF.	M H	Mounting height Adjust detection area/sensitivity levels according to real installation situations, higher or lower.	↑	Up The main functional buttons to adjust the factors to desired level.
Auto	Auto Enter "sensor mode" and perform previous settings.	Send	Send Memorize and send out the previous setting of individual parameters.	↓	Down Press + - button to dim light directly in non-detection mode.
Reset	Reset Enter "sensor mode" and perform the default settings.	↻	Detection range Also known as "sensitivity", 100 % means the highest sensitivity and longest distance. Use this button and the + - buttons to adjust.	CCT	CCT Selectable Not applicable to this product.
Scenes	Scenes Shows current settings saved in remote.	☀	Daylight sensor The preset lux level at which motion will be detected. Use this button and the + - buttons to adjust.	POWER	Power Adjust brightness in both ON/OFF mode & sensor mode. minimum 10%, max 100%, each time this button is pressed it changes by 5%.
Start	Start Press this to begin scene setup.	☾	Stand-by dimming After hold time, the light will dim from 100 % to optional standby dimming levels. Use this button and the + - buttons to adjust.	○	Reserved Button Not applicable to this product.
Memory	Memory Saves the scene settings.	⌚	Hold time The period that light will stay illuminated 100 % after no motion is detected. Use this button and the + - buttons to adjust.	☀/☾	Daylight Harvesting Daylight harvesting function enabled or disabled.
Apply	Apply Applies current scene settings to the fixture.	⌚	Stand-by period The period after holdtime, during which the light keeps standby dimming level. Use this button and the + - buttons to adjust.	Test	Test button Press this button to test the sensor; it will temporarily change the hold time to 2s. This setting cannot be saved.





ASD-08MW
Microwave motion sensor 3pin



ASD-06RC
Remote control



- Highest mounting height is 13.1 ft (4 m)
- This figure indicates the maximum distance at the highest mounting height with 100 % sensitivity.
-  Well detected area
-  Possibly detected area

Specifications	
Operating voltage	10-15 Vdc
Operating current	≥ 40mA
Working mode	0-10 V
Detection area	25 %/50 %/75 %/100 %
Hold time	Remote control: 5 s/30 s/1 min/2 min/3 min/5 min/10 min/15 min/20 min/25 min/30 min/45 min/60 min/90 min/120 min
Daylight threshold	2 lux (0.2 fc)/10 lux (0.9 fc)/30 lux (2.8 fc)/50 lux (4.7 fc)/80 lux (7.4 fc)/120 lux (11.2 fc)/200 lux (18.6 fc)/250 lux (23.2 fc)/300 lux (27.9 fc)/350 lux (32.5 fc)/400 lux (37.2 fc)/disable
Standby period	0 s/5 s/30 s/1 min/2 min/3 min/5 min/10 min/15 min/20 min/25 min/30 min/45 min/60 min/+ ∞
Standby dimming level	Remote control: 10 %/20 %/30 %/50 %
Operating temperature	- 13°F to 140°F (-25°C to 60°C)
Mounting height	max 13.1 ft (4 m)
Detection range	> 65 ft (20 m)
Operating frequency	5.8 GHz ± 75 GHz
Microwave power	< 0.3 mW
IP rating	IP20

User notes:

1. Microwaves can penetrate walls or glass thinner than 0.8" but will be impaired if thicker than 0.8".
2. The driver voltage shall be stable and float within 10 %.
3. Detection area will be affected by speed of motion, mounting height and movement volume.
4. Conduct testing with adequate ambient lighting for best results.
5. Dimming performance differs when connected to different drivers; if the driver can't completely turn OFF, sensor can't either.
6. The first time powered ON sensor, light will be ON 100% for about 10S then dims to standby level or OFF.

Installation precautions:

1. Suitable for ceiling mount installation, adjust sensitivity properly if it's installed on side-wall because it gets more sensitive.
2. Make sure the microwave module is completely exposed.
3. The detection surface of the sensor module should be installed facing the detection area.

Application environment:

1. Suitable for indoor application, half/completely outdoor environment conditions might trigger the sensor.
2. Shall be mounted securely, to avoid any false triggers caused by movement of the fixture itself.
3. Keep the sensor module away from AC input and DC output to avoid high/low frequency signal interference.

DEFAULT SETTING:

Specifications	
Detection area	100 %
Hold time	10 min
Daylight threshold	Disable
Stand-by period	0 s
Stand-by dimming level	10 %

 RF interference may affect the operation of this sensor.

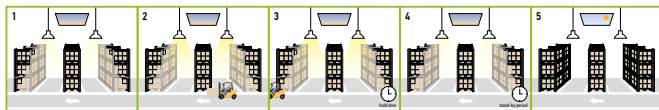
For most up-to-date spec sheets please refer to asd-lighting.com



LED STRIPLIGHT FIXTURE WITH Q-BASE

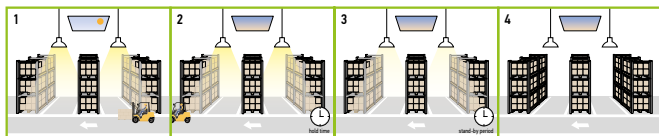
WITH DUSK/DAWN FUNCTION:

1. With insufficient ambient brightness, sensor turns on light and keeps it at standby dimming level even if there is no motion or presence.
2. When sensor detects motion or presence it will bring the light level up to 100%.
3. After motion is no longer detected, fixture remains at 100% for hold time.
4. After pre-set hold time period it will dim to standby dimming level again and always keep it.
5. With sufficient ambient brightness, sensor will turn OFF light automatically.



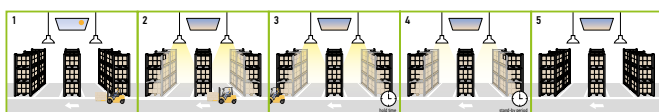
WITH DAYLIGHT DISABLED:

1. Sensor turns ON light when motion is detected.
2. Light will stay on after detecting motion for the desired hold time.
3. Sensor dims light to standby dimming level after hold time if there is still no motion.
4. Sensor turns OFF light after standby period.



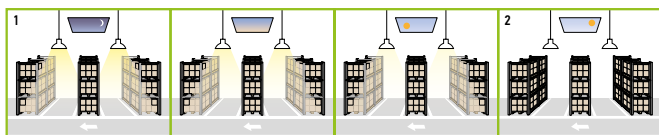
WITH DAYLIGHT THRESHOLD:

1. With sufficient daylight, the light remains OFF even after motion is detected.
2. With insufficient daylight, the sensor turns light ON when motion is detected.
3. After there's no motion detected, the sensor keeps light ON 100% for holdtime.
4. After holdtime, sensor dims light to standby dimming level for standby period. If the standby period has been set as 0s, sensor turns light OFF automatically after holdtime.
5. The sensor turns OFF light automatically after the standby period when there's no motion detected.

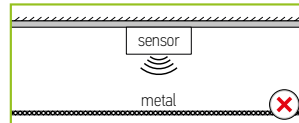


DAYLIGHT HARVESTING:

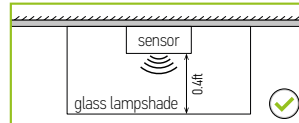
1. When ambient brightness is lower than preset lux level, sensor will turn on light automatically and keep dimming according to the change of the ambient brightness. As it gets darker outside the fixtures will brighten, and as it gets brighter outside the fixtures will dim down.
2. When the ambient brightness exceeds the preset lux level, the light will turn OFF.



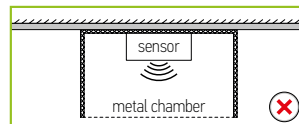
To avoid blocking the microwave emission, the microwave sensor can not be covered with metal materials, be sprayed with a coating of metal components, or have attached metal material or stickers etc.



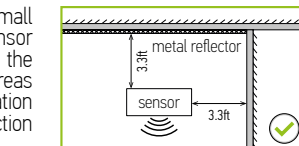
The distance between the antenna and the glass (dielectric material) should be no less than 0.4 ft when the sensor is within the glass lampshade. Otherwise, the microwave motion sensor will not penetrate the glass easily.



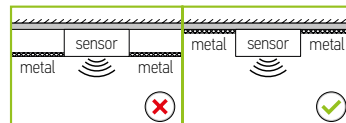
Avoid placing the sensor inside a metal chamber, this may cause a mis-trigger.



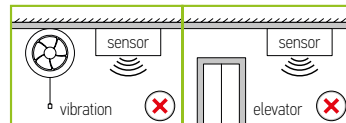
The sensor should not be placed in a small confined space. To avoid increasing the sensor detection range or abnormal operation, the sensor should be kept away from large areas of metal and glass reflectors (separation distance at least 3.3 ft). Reduce the detection area setting.



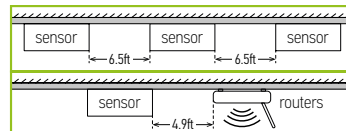
To avoid affecting the microwave signal transmission, the microwave antenna should be higher than the surrounding metal surface.



Any vibration or movement may trigger the sensor. Ensure the sensor is far from any constant movement.

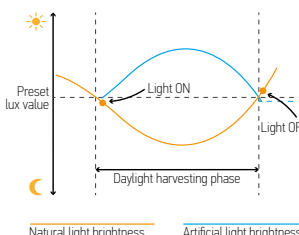


There must be at least 6.5ft between microwave sensors; There must be at least 4.9ft between the sensor and other wireless devices such as routers to avoid possible radio interference.



DAYLIGHT HARVESTING SETTING:

1. Adjust "daylight" value higher than 50lux.
2. Preset "standby period" 0S
3. Press MW button 3 times until the MW icons are both blinking on LCD screen, daylight harvesting function enabled. (With BLE version, press DH button, daylight harvesting function enabled).



For most up-to-date spec sheets please refer to asd-lighting.com



LED STRIPLIGHT FIXTURE WITH Q-BASE

INSTALLATION GUIDE

IMPORTANT SAFETY INFORMATION:

Please read all the instructions below before installation.

- ▶ Make sure that the supply voltage corresponds to the rated product voltage.
- ▶ The product must be installed by a qualified electrician in accordance with the National Electrical Code and corresponding local codes.
- ▶ If the product is damaged, do not use it.

WARNING

RISK OF PERSONAL INJURY – READ and follow all WARNINGS and installation instructions. Keep or give to the owner for future reference.

Risk of cuts: Wear gloves to prevent cuts or abrasions when removing from carton, handling, installing, and maintaining this product.

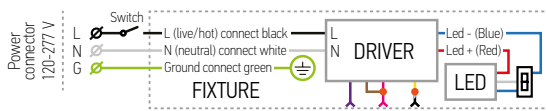
Risk of electric shock: This product must be installed in accordance with the applicable installation code by a person familiar with the construction and operation of the product and the hazards involved.

Risk of Fire: Minimum 194°F supply conductors. Consult a qualified electrician to ensure correct branch circuit conductor.

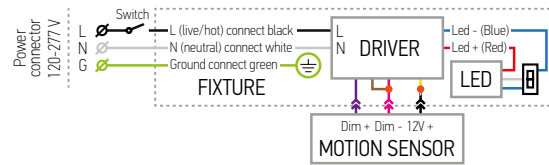
ASD® assumes no responsibility for claims arising out of improper or careless installation or handling of this product.

ELECTRICAL SCHEMATIC DIAGRAM:

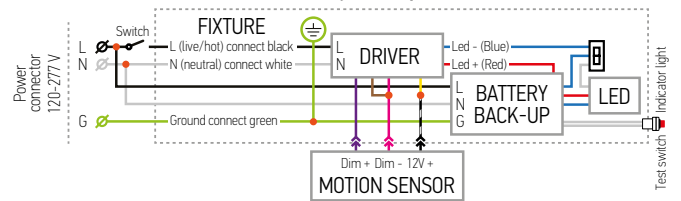
LSF7A



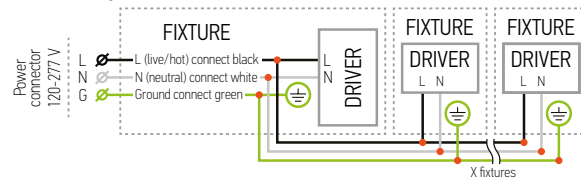
LSF7A with motion sensor



LSF7A-EM with motion sensor and battery back-up



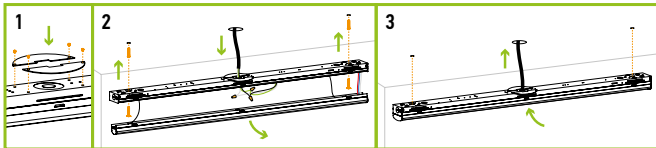
LSF7A multiple fixture connection



Recommended wire thickness should not exceed 18AWG.

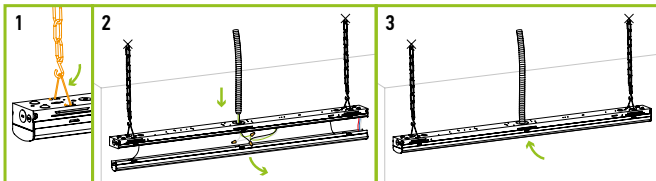
SURFACE MOUNT INSTALLATION:

1. Secure the baffle onto the back of the fixture with screws.
2. Open the fixture by pressing the area between the narrow rectangular hole and snap-lock. Connect the wires: Black to Black, White to White, Green to Green
3. Secure the luminaire to the ceiling with the plastic anchors and screws (not included). Assemble lighting fixture.



CHAIN MOUNT INSTALLATION:

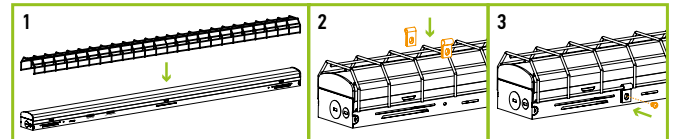
1. Connect the V-hook to back of the fixture body, after insert chain on each hook. Attach the chain to the ceiling and adjust until balanced and secure.
2. Secure the end of metal hose to the outlet hole. Open the fixture body and connect the wires: Black to Black, White to White, Green to Green.
3. Assemble the fixture back to complete the installation.



WIRE GUARD INSTALLATION ASD-WG4-LSF7

sold separately:

1. Install the wire guard to the fixture.
2. Insert the provided chips (4pcs) onto the wire guard.
3. Fasten the chips by drilling screws into the pre-punched holes of fixture body.



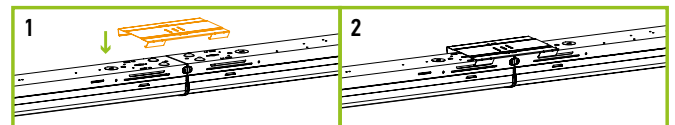
CONNECTING MULTIPLE FIXTURES

ASD-CB-LSF5 sold separately:

1. Open the fixture and remove the knockout on the side of the fixture according to your needs. Feed the wires through the knockout hole and connect with fixture wires inside of the luminaire. If 0-10V dimming system is available, connect the purple and gray wires to the corresponding purple and gray wires in the built-in dimming system.

CAUTION: Customer supplied AC wire must be 16AWG.

2. If need to connect one fixture to another please use connection bracket (sold separately). Repeat the process for the next fixture.



For most up-to-date spec sheets please refer to asd-lighting.com

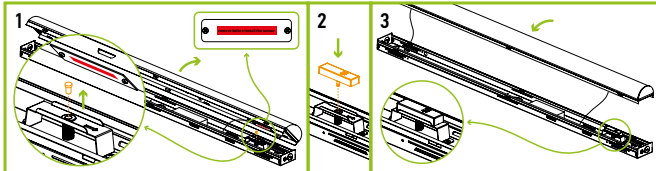


LED STRIPLIGHT FIXTURE WITH Q-BASE

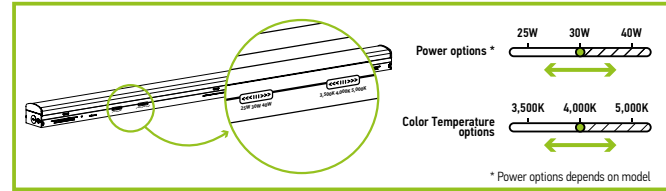
MOTION SENSOR INSTALLATION

ASD-08MW-WH sold separately:

1. Open the fixture by pressing the area between the narrow rectangular hole and snap-lock. Remove the protection plate from the board and protection cap from the sensor base.
2. Secure the sensor to the audio jack sensor base inside of the fixture.
3. Close the fixture by fixing diffusor on the base.



POWER AND COLOR TEMPERATURE SETTINGS:



ORDERING INFORMATION

Model	UPC	Pcs. per carton	Carton size	Carton weight	GTIN 14
LSF7A					
ASD-LSF7A-2A25	810128114493	6	23.3" x 9.8" x 6.9"	18.5 lbs	10810128114490
ASD-LSF7A-4A40	810128113076	6	48.4" x 9.7" x 7.1"	30 lbs	10810128113073
ASD-LSF7A-4A40-BK	810128115308	6	48.4" x 9.7" x 7.1"	30 lbs	10810128115305
ASD-LSF7A-8A90	810128113090	4	95.8" x 13.4" x 3.6"	37.9 lbs	10810128113097
ASD-LSF7A-8A90-BK	810128115322	4	95.8" x 13.4" x 3.6"	37.9 lbs	10810128115329
LSF7A-EM WITH BATTERY BACK-UP					
ASD-LSF7A-2A25-EM	810128115292	6	25.7" x 11.3" x 7.1"	34.4 lbs	10810128115299
ASD-LSF7A-4A40-EM	810128113083	6	48.4" x 9.7" x 7.1"	43.2 lbs	10810128113080
ASD-LSF7A-4A40-EM-BK	810128115315	6	48.4" x 9.7" x 7.1"	43.2 lbs	10810128115312
ASD-LSF7A-8A90-EM	810128113106	4	95.8" x 15.5" x 4.1"	46.7 lbs	10810128113103
ASD-LSF7A-8A90-EM-BK	810128115339	4	95.8" x 15.5" x 4.1"	46.7 lbs	10810128115336

ACCESSORIES:

Model	Description	UPC	Pcs. in middle box	Middle box size	Middle box weight	GTIN 14 in middle box	Pcs. per carton	Carton size	Carton weight	GTIN 14 in carton
ASD-08MW-WH	Microwave motion sensor	810128113731	10	3.2" x 1.7" x 10.4"	0.4 lbs	20810128113735	120	11.2" x 7.5" x 10.2"	11.4 lbs	30810128113732
ASD-06RC	Remote control for motion sensor	810128114370	-	-	-	-	1	5.9" x 2.8" x 1.1"	0.4 lbs	-
ASD-CB-LSF7	Connection bracket	10810128114339	-	-	-	-	100	20.3" x 8.4" x 7.8"	121.3 lbs	20810128114336
ASD-WG4-LSF7	Wire guard	810128114325	-	-	-	-	2	48.2" x 4.7" x 2.5"	7.1 lbs	10810128114322

ANNEX 1

Model	Watts	3,500 K	4,000 K	5,000 K
ASD-LSF7A-2A25	15W	1,980 lm	2,088 lm	2,023 lm
	20W	2,544 lm	2,723 lm	2,618 lm
	25W	3,078 lm	3,319 lm	3,137 lm
ASD-LSF7A-2A25-EM	15W	1,939 lm	2,081 lm	2,054 lm
	20W	2,569 lm	2,781 lm	2,724 lm
	25W	3,160 lm	3,414 lm	3,293 lm
ASD-LSF7A-4A40	25W	3,576 lm	3,692 lm	3,615 lm
ASD-LSF7A-4A40-BK	30W	4,208 lm	4,386 lm	4,267 lm
ASD-LSF7A-4A40-EM	40W	5,229 lm	5,482 lm	5,276 lm
ASD-LSF7A-4A40-EM-BK				
ASD-LSF7A-8A90	65W	9,048 lm	9,419 lm	9,066 lm
ASD-LSF7A-8A90-BK	75W	10,287 lm	10,969 lm	10,411 lm
ASD-LSF7A-8A90-EM				
ASD-LSF7A-8A90-EM-BK	90W	11,771 lm	12,394 lm	11,898 lm

For most up-to-date spec sheets please refer to asd-lighting.com