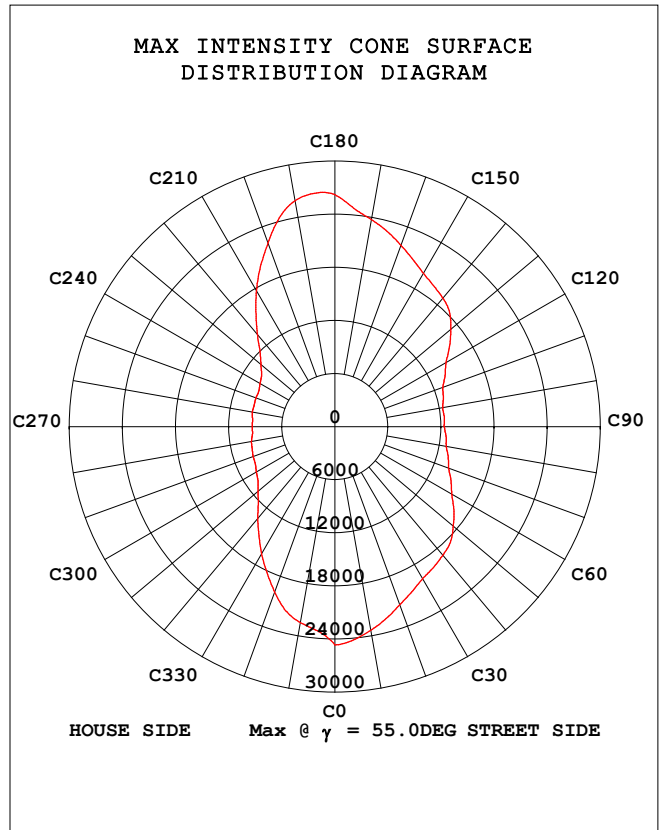
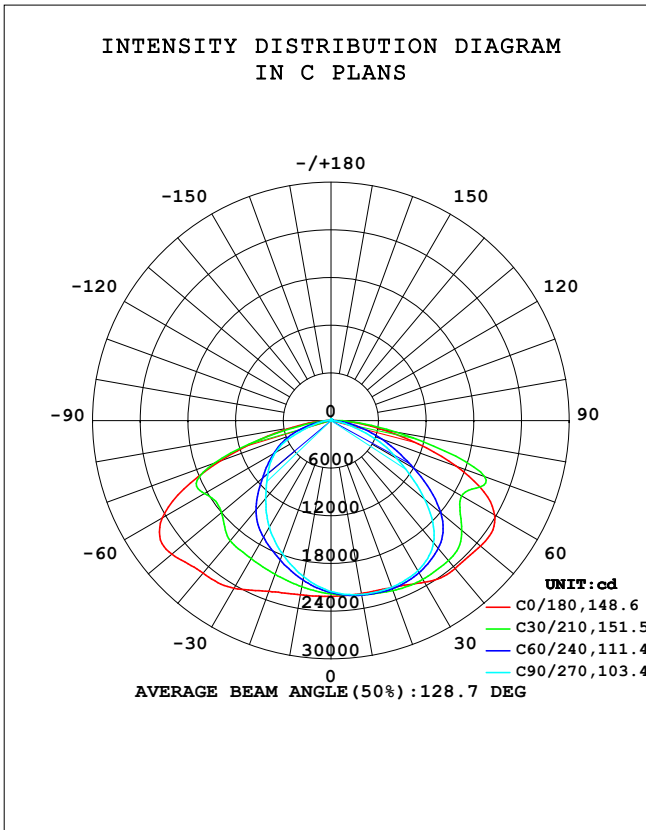


**STREETLIGHT PHOTOMETRIC TEST REPORT**

Test:U:118.49V I:4.1747A P:488.06W PF:0.9867 Freq:50.04Hz Lamp Flux:83326.5x1 lm		
NAME: ASD-LSB5B-PRO-500BR	TYPE:	WEIGHT:
SPEC.: 500W 5000K	DIM.:	SERIAL No.:
MFR.: ASD LIGHTING CORP	SUR.:	Shielding Angle:

DATA OF LAMP		PHOTOMETRIC DATA Eff: 170.73 lm/W			
MODEL	ASD-LSB5B-PRO-500BR	I <sub>max</sub> (cd)	26471	η street_up (%)	0.4
NOMINAL POWER (W)	500	LOR (%)	100.0	η street_down (%)	53.8
RATED VOLTAGE (V)	120	TOTAL FLUX (lm)	83326	η house_up (%)	0.5
NOMINAL FLUX (lm)	83326.5	MAXIMUM @ (C, γ )	185,55.0	η house_down (%)	45.3
LAMPS INSIDE	1	η up (%)	0.9	76 FLASHAREA (m2)	
TEST VOLTAGE (V)	120	η down (%)	99.1	SLI	

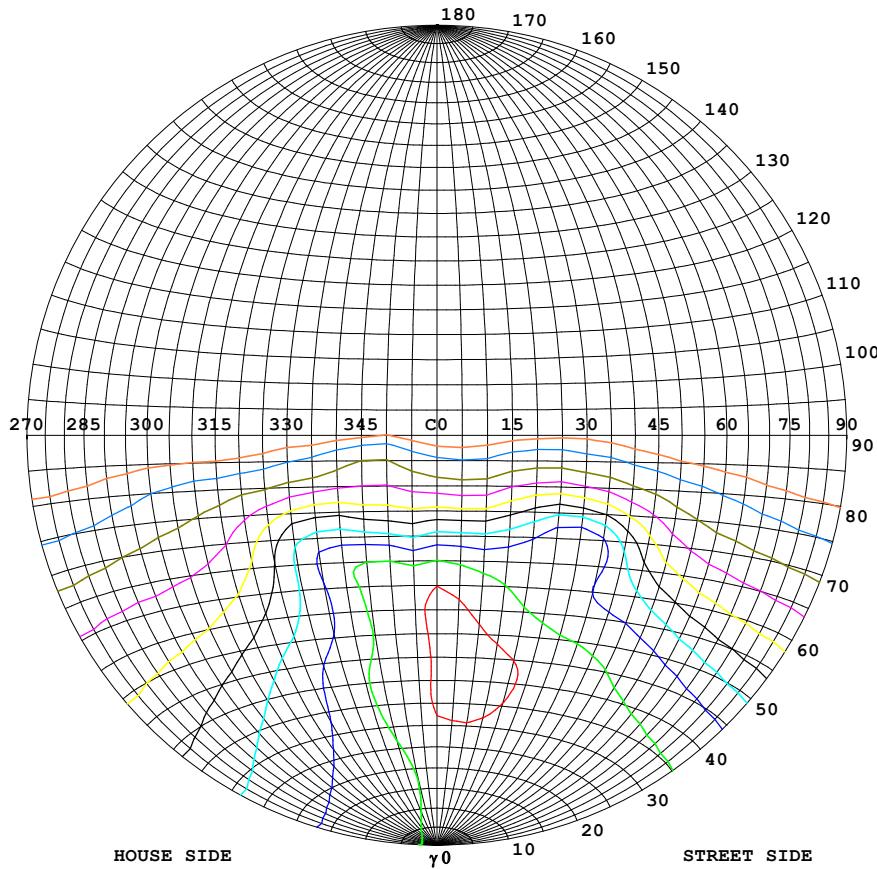


C Range: 0 - 360DEG  
 C Interval: 5.0DEG  
 Test Speed: HIGH  
 Temperature: 25.3DEG  
 Operators: S  
 Test Date: 03 April 2024

γ Range: 0 - 180DEG  
 γ Interval: 1.0DEG  
 Test System: EVERFINE GO-2000B\_V1 SYSTEM V2.00.446  
 Humidity: 65.0%  
 Test Distance: 7.850m [K=1.0000]  
 Remarks:

**STREETLIGHT ISOCANDELA DIAGRAM**

Test:U:118.49V I:4.1747A P:488.06W PF:0.9867 Freq:50.04Hz Lamp Flux:83326.5x1 lm		
NAME: ASD-LSB5B-PRO-500BR	TYPE:	WEIGHT:
SPEC.: 500W 5000K	DIM.:	SERIAL No.:
MFR.: ASD LIGHTING CORP	SUR.:	Shielding Angle:



**Classification:**

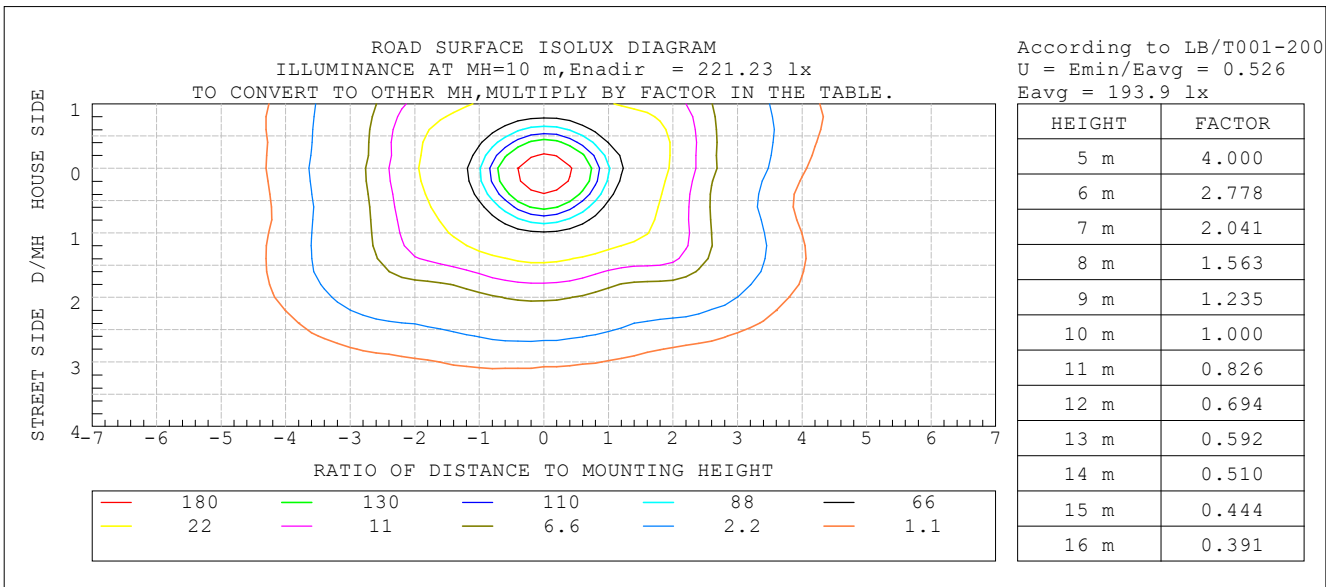
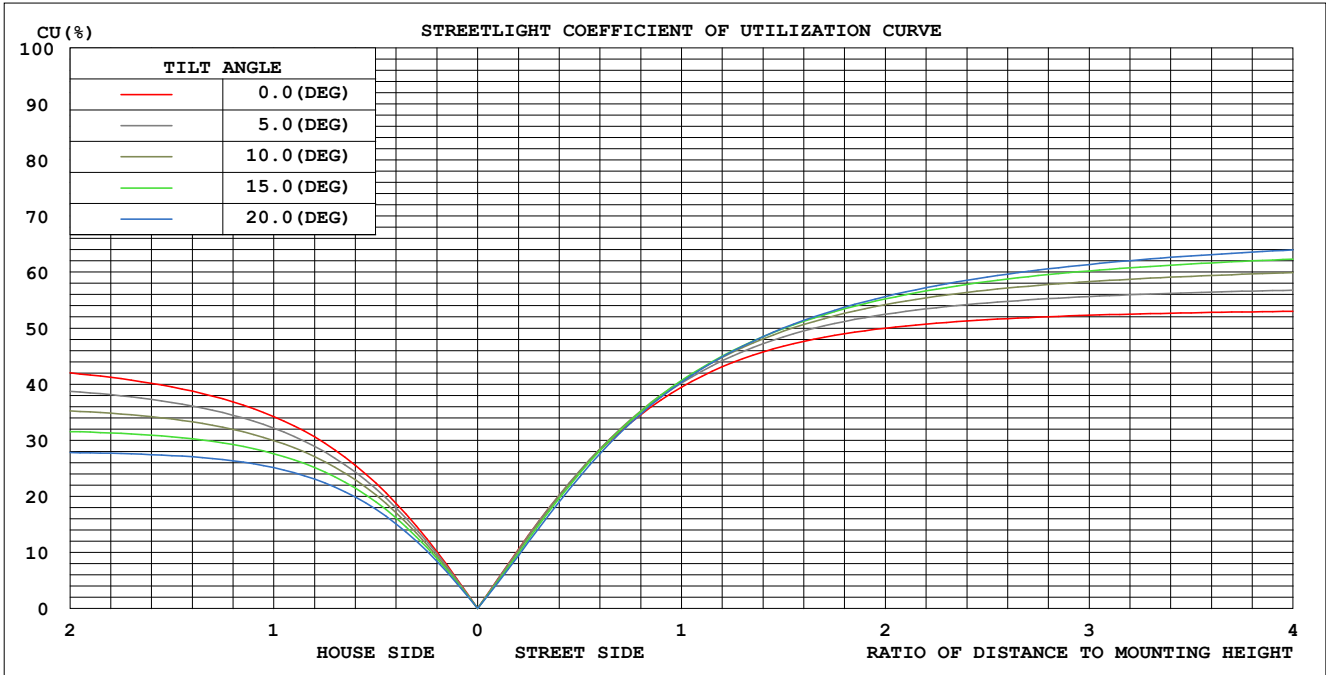
IES:Type III - Short  
 CIE:Narrow - Short  
 IES:Semi cut-off  
 CIE:Non-cut-off  
 Max.At80:108.1cd/klm  
 Max.At90:16.76cd/klm  
 Max.80-90:108.1cd/klm  
 NRB 5101:Semi limited[15.6%]

ISOCANDELA DIAGRAM	
UNIT	cd
Imax=100%	26471
90%	23824
80%	21177
70%	18530
60%	15883
50%	13236
40%	10588
30%	7941
20%	5294
10%	2647
5%	1324

C Range: 0 - 360DEG  
 C Interval: 5.0DEG  
 Test Speed: HIGH  
 Temperature:25.3DEG  
 Operators:S  
 Test Date:03 April 2024

γ Range: 0 - 180DEG  
 γ Interval: 1.0DEG  
 Test System:EVERFINE GO-2000B\_V1 SYSTEM V2.00.446  
 Humidity:65.0%  
 Test Distance:7.850m [K=1.0000]  
 Remarks:

COEFFICIENT OF UTILIZATION CURVE  
AND ISOLUX DIAGRAM



C Range: 0 - 360DEG  
C Interval: 5.0DEG  
Test Speed: HIGH  
Temperature: 25.3DEG  
Operators: S  
Test Date: 03 April 2024

$\gamma$  Range: 0 - 180DEG  
 $\gamma$  Interval: 1.0DEG  
Test System: EVERFINE GO-2000B\_V1 SYSTEM V2.00.446  
Humidity: 65.0%  
Test Distance: 7.850m [K=1.0000]  
Remarks:

ZONAL FLUX DIAGRAM

Test:U:118.49V I:4.1747A P:488.06W PF:0.9867 Freq:50.04Hz Lamp Flux:83326.5x1 lm		
NAME: ASD-LSB5B-PRO-500BR	TYPE:	WEIGHT:
SPEC.: 500W 5000K	DIM.:	SERIAL No.:
MFR.: ASD LIGHTING CORP	SUR.:	Shielding Angle:

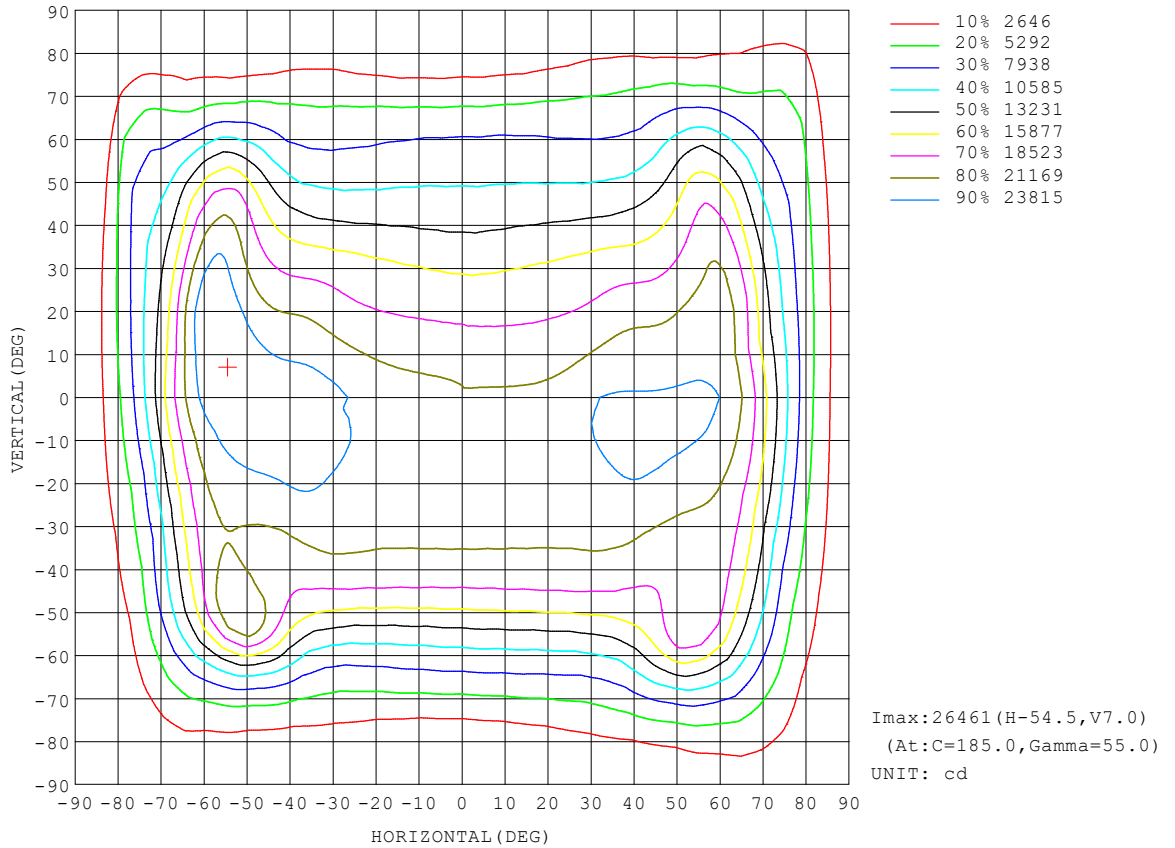
γ	C0	C45	C90	C135	C180	C225	C270	C315	γ	Φ zone	Φ total	%lum,lamp
10	2211	2232	2222	2214	2228	2076	1995	2035	0- 10	2055	2055	2.47,2.47
20	2237	2268	2233	2269	2288	1950	1787	1900	10- 20	6022	8077	9.69,9.69
30	2352	2252	2184	2262	2438	1820	1553	1776	20- 30	9678	17755	21.3,21.3
40	2432	2177	2007	2205	2507	1685	1279	1648	30- 40	12782	30537	36.6,36.6
50	2457	2018	1538	2002	2617	1375	1039	1387	40- 50	14628	45165	54.2,54.2
60	2378	1644	962.2	1653	2454	1027	809.9	1072	50- 60	14670	59835	71.8,71.8
70	1677	1148	470.4	1079	1476	702.7	418.1	787.4	60- 70	13127	72962	87.6,87.6
80	661.8	474.3	128.3	316.8	487.4	233.4	150.1	384.0	70- 80	7613	80575	96.7,96.7
90	21.65	30.35	1.827	3.831	8.003	8.056	4.309	12.66	80- 90	1973	82548	99.1,99.1
100	10.10	5.647	3.460	6.238	12.31	9.280	5.577	9.071	90-100	86.07	82634	99.2,99.2
110	13.94	8.266	5.528	8.767	15.71	12.10	8.652	11.55	100-110	95.91	82730	99.3,99.3
120	15.96	10.73	7.751	10.89	17.44	14.67	11.89	14.51	110-120	116.4	82846	99.4,99.4
130	16.41	12.71	9.933	11.95	17.73	15.69	14.56	16.53	120-130	123.2	82970	99.6,99.6
140	15.78	13.99	11.81	12.61	17.16	16.35	16.31	17.37	130-140	114.8	83084	99.7,99.7
150	16.20	15.33	13.48	13.65	17.47	17.20	17.25	18.15	140-150	97.87	83182	99.8,99.8
160	17.66	16.87	15.04	14.95	18.61	17.80	18.01	18.73	150-160	76.67	83259	99.9,99.9
170	19.32	18.06	16.62	16.71	19.71	18.40	18.36	18.93	160-170	50.06	83309	100,100
180	20.04	18.58	17.93	18.33	20.08	18.56	17.93	18.32	170-180	17.58	83326	100,100
DEG	LUMINOUS INTENSITY:X10cd									UNIT:lm		

C Range: 0 - 360DEG  
 C Interval: 5.0DEG  
 Test Speed: HIGH  
 Temperature:25.3DEG  
 Operators:S  
 Test Date:03 April 2024

γ Range: 0 - 180DEG  
 γ Interval: 1.0DEG  
 Test System:EVERFINE GO-2000B\_V1 SYSTEM V2.00.446  
 Humidity:65.0%  
 Test Distance:7.850m [K=1.0000]  
 Remarks:

**ISOCANDELA DIAGRAM**

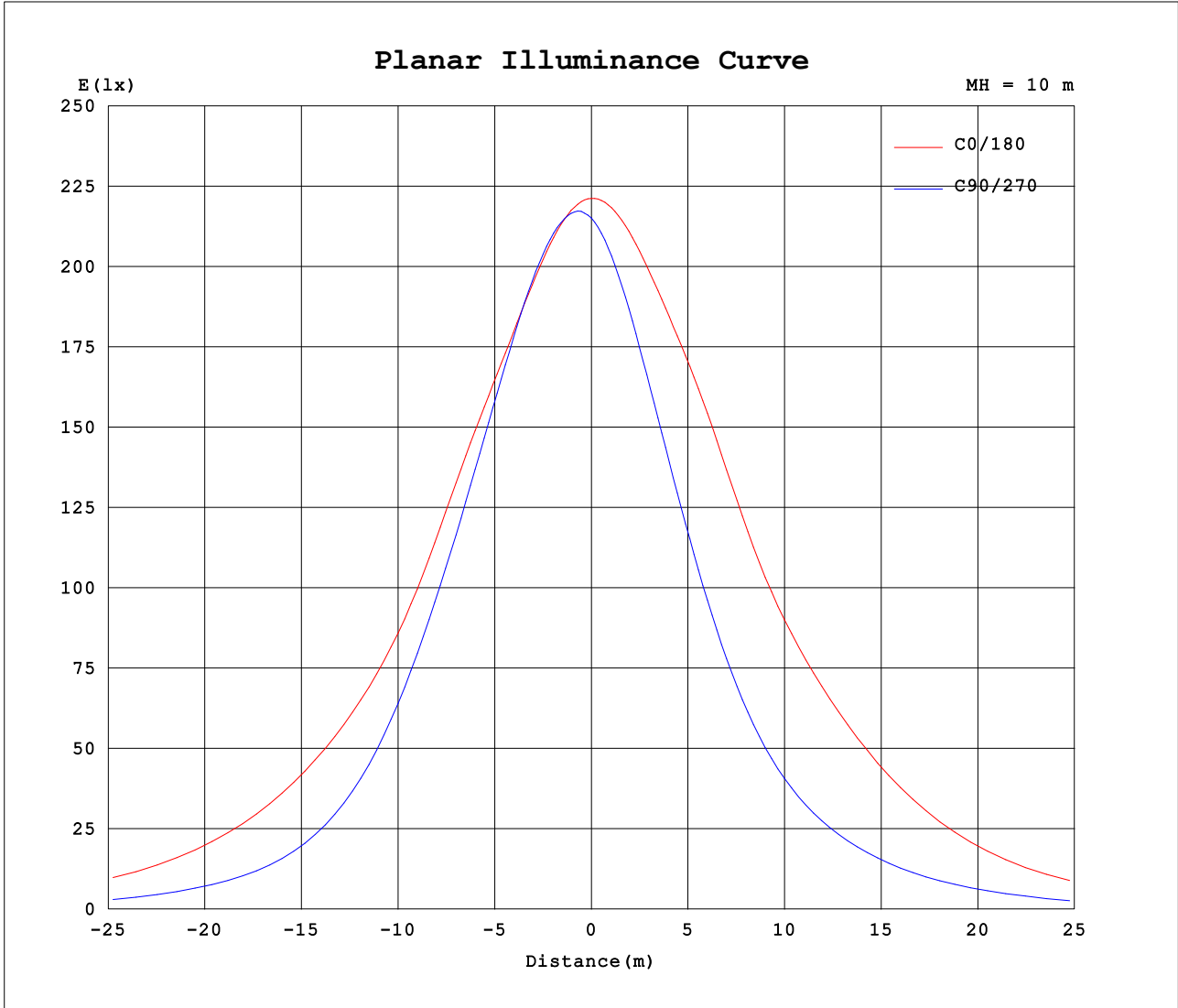
Test:U:118.49V I:4.1747A P:488.06W PF:0.9867 Freq:50.04Hz Lamp Flux:83326.5x1 lm		
NAME: ASD-LSB5B-PRO-500BR	TYPE:	WEIGHT:
SPEC.: 500W 5000K	DIM.:	SERIAL No.:
MFR.: ASD LIGHTING CORP	SUR.:	Shielding Angle:



C Range: 0 - 360DEG  
C Interval: 5.0DEG  
Test Speed: HIGH  
Temperature:25.3DEG  
Operators:S  
Test Date:03 April 2024

γ Range: 0 - 180DEG  
γ Interval: 1.0DEG  
Test System:EVERFINE GO-2000B\_V1 SYSTEM V2.00.446  
Humidity:65.0%  
Test Distance:7.850m [K=1.0000]  
Remarks:

**Planar Illuminance Curve**



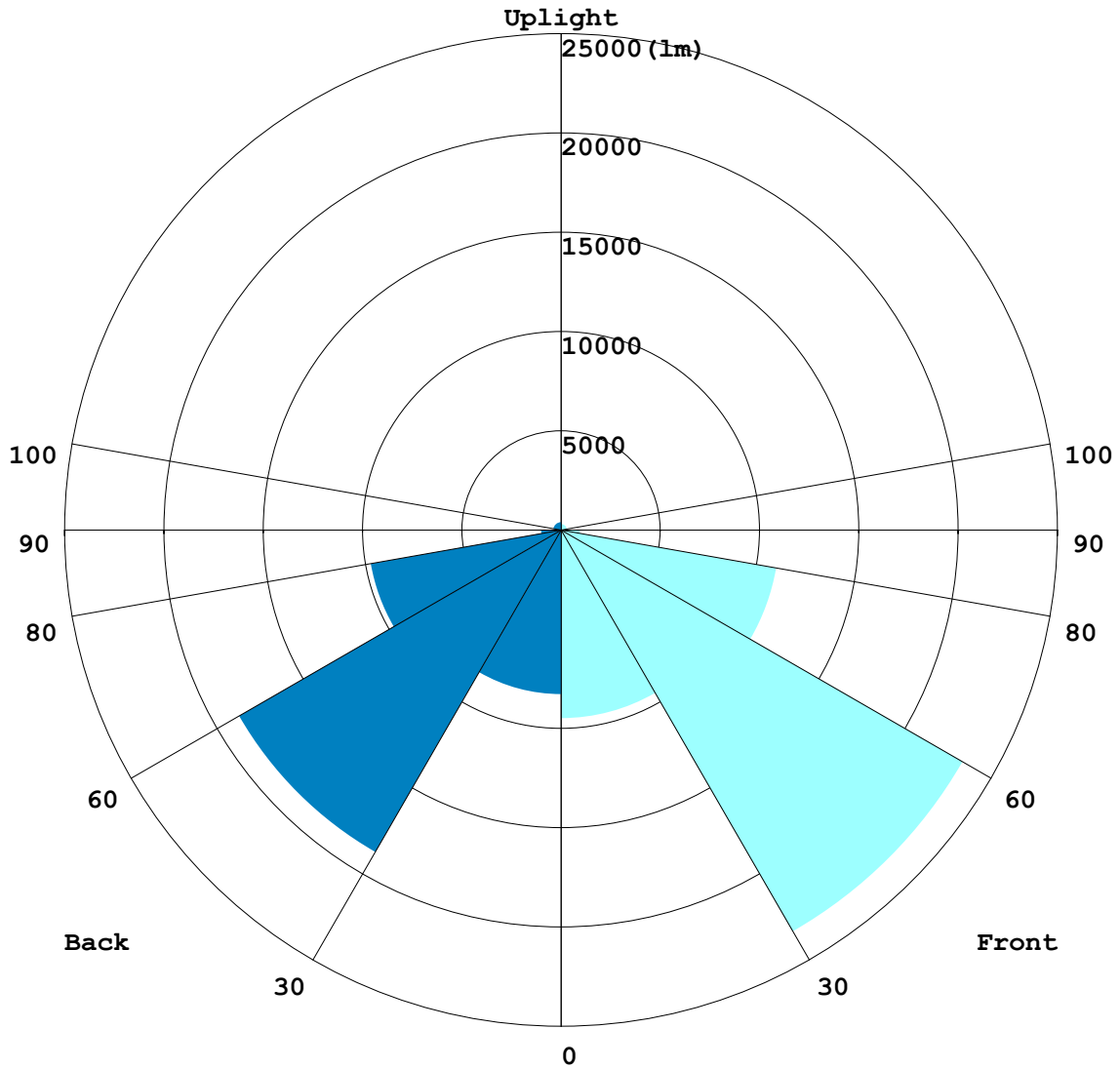
C Range: 0 - 360DEG  
 C Interval: 5.0DEG  
 Test Speed: HIGH  
 Temperature: 25.3DEG  
 Operators: S  
 Test Date: 03 April 2024

$\gamma$  Range: 0 - 180DEG  
 $\gamma$  Interval: 1.0DEG  
 Test System: EVERFINE GO-2000B\_V1 SYSTEM V2.00.446  
 Humidity: 65.0%  
 Test Distance: 7.850m [K=1.0000]  
 Remarks:

**LCS REPORT**

Test:U:118.49V I:4.1747A P:488.06W PF:0.9867 Freq:50.04Hz		
Lamp Flux:83326.5x1 lm		
NAME: ASD-LSB5B-PRO-500BR	TYPE:	WEIGHT:
SPEC.: 500W 5000K	DIM.:	SERIAL No.:
MFR.: ASD LIGHTING CORP	SUR.:	Shielding Angle:

**LUMINAIRE CLASSIFICATION SYSTEM(LCS) GRAPH**



C Range: 0 - 360DEG  
 C Interval: 5.0DEG  
 Test Speed: HIGH  
 Temperature:25.3DEG  
 Operators:S  
 Test Date:03 April 2024

γ Range: 0 - 180DEG  
 γ Interval: 1.0DEG  
 Test System:EVERFINE GO-2000B\_V1 SYSTEM V2.00.446  
 Humidity:65.0%  
 Test Distance:7.850m [K=1.0000]  
 Remarks:

**BUG REPORT**

Test:U:118.49V I:4.1747A P:488.06W PF:0.9867 Freq:50.04Hz Lamp Flux:83326.5x1 lm		
NAME: ASD-LSB5B-PRO-500BR	TYPE:	WEIGHT:
SPEC.: 500W 5000K	DIM.:	SERIAL No.:
MFR.: ASD LIGHTING CORP	SUR.:	Shielding Angle:

**IESNA Luminaire Flux Distribution Table:**

Zone	Lumens	Luminaire %
FL - Front-Low(0-30)	9486.5	11.4
FM - Front-Medium(30-60)	23346	28.0
FH - Front-High(60-80)	11004	13.2
FVH - Front-Very High(80-90)	966.27	1.2
<b>Total Forward Light</b>	<b>45145</b>	<b>54.2</b>

BL - Back-Low(0-30)	8268.6	9.9
BM - Back-Medium(30-60)	18734	22.5
BH - Back-High(60-80)	9736.2	11.7
BVH - Back-Very High(80-90)	1006.7	1.2
<b>Total Back Light</b>	<b>38182</b>	<b>45.8</b>

UL - Uplight-Low(90-100)	86.068	0.1
UH - Uplight-High(100-180)	692.5	0.8
<b>Total Up Light</b>	<b>778.57</b>	<b>0.9</b>

<b>BUG(Back,Up,Glare) Rating</b>	<b>B5-U4-G5</b>
----------------------------------	-----------------

Zone	Downward Lumens	Upward Lumens	Total Lumens
House Side	37745	436.49	38182
Street Side	44803	342.08	45145

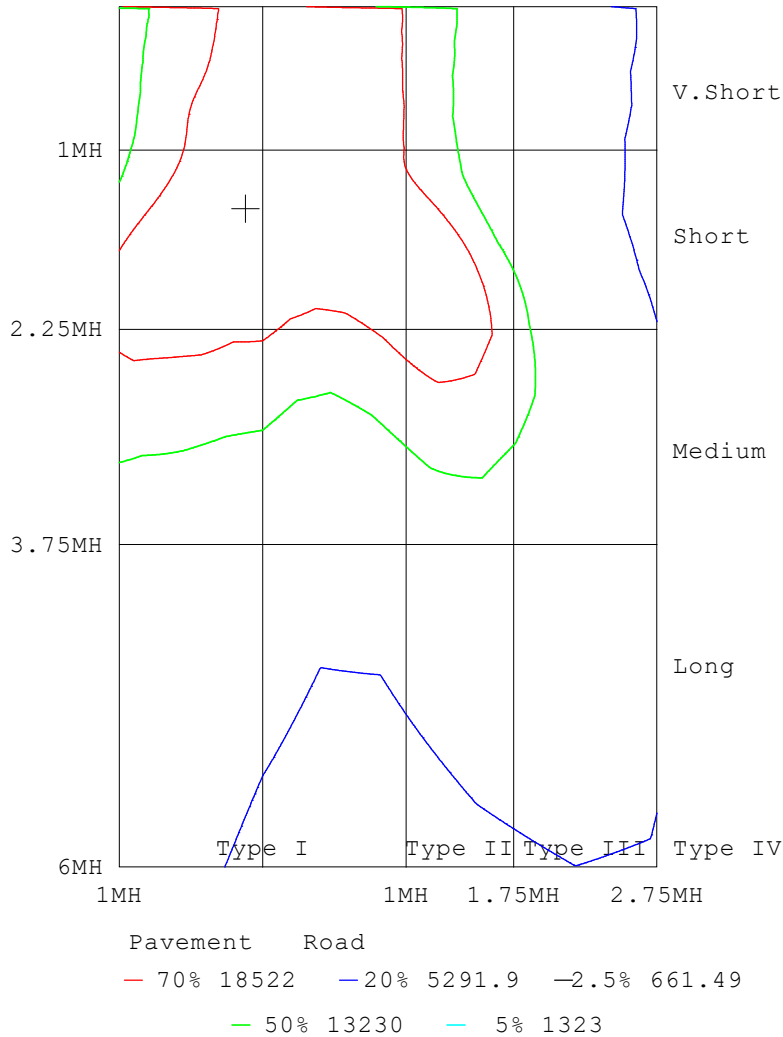
C Range: 0 - 360DEG  
 C Interval: 5.0DEG  
 Test Speed: HIGH  
 Temperature:25.3DEG  
 Operators:S  
 Test Date:03 April 2024

γ Range: 0 - 180DEG  
 γ Interval: 1.0DEG  
 Test System:EVERFINE GO-2000B\_V1 SYSTEM V2.00.446  
 Humidity:65.0%  
 Test Distance:7.850m [K=1.0000]  
 Remarks:

**ROAD ISOCANDELA REPORT**

Test:U:118.49V I:4.1747A P:488.06W PF:0.9867 Freq:50.04Hz Lamp Flux:83326.5x1 lm		
NAME: ASD-LSB5B-PRO-500BR	TYPE:	WEIGHT:
SPEC.: 500W 5000K	DIM.:	SERIAL No.:
MFR.: ASD LIGHTING CORP	SUR.:	Shielding Angle:

ROAD SURFACE ISOCANDELA DIAGRAM



C Range: 0 - 360DEG  
C Interval: 5.0DEG  
Test Speed: HIGH  
Temperature:25.3DEG  
Operators:S  
Test Date:03 April 2024

γ Range: 0 - 180DEG  
γ Interval: 1.0DEG  
Test System:EVERFINE GO-2000B\_V1 SYSTEM V2.00.446  
Humidity:65.0%  
Test Distance:7.850m [K=1.0000]  
Remarks:

LUMINOUS DISTRIBUTION INTENSITY DATA

Test:U:118.49V I:4.1747A P:488.06W PF:0.9867 Freq:50.04Hz Lamp Flux:83326.5x1 lm		
NAME: ASD-LSB5B-PRO-500BR	TYPE:	WEIGHT:
SPEC.: 500W 5000K	DIM.:	SERIAL No.:
MFR.: ASD LIGHTING CORP	SUR.:	Shielding Angle:

Table--1

UNIT: X10cd

C (DEG) \ γ (DEG)	0	5	10	15	20	25	30	35	40	45	50	55	60	65	70	75	80	85	90
0	2212	2206	2199	2193	2190	2185	2182	2177	2176	2173	2171	2168	2166	2162	2161	2157	2156	2151	2151
5	2210	2208	2208	2206	2207	2206	2206	2205	2207	2206	2206	2205	2206	2203	2202	2200	2200	2197	2195
10	2211	2214	2217	2220	2223	2226	2228	2229	2232	2232	2232	2231	2230	2229	2228	2225	2225	2222	2222
15	2217	2225	2234	2240	2245	2248	2251	2252	2252	2251	2251	2249	2246	2244	2242	2240	2238	2236	2234
20	2237	2250	2263	2271	2276	2278	2276	2275	2272	2268	2263	2258	2253	2248	2244	2240	2237	2235	2233
25	2281	2298	2312	2315	2314	2308	2299	2289	2280	2270	2259	2250	2242	2236	2230	2225	2222	2219	2217
30	2352	2366	2374	2364	2350	2330	2309	2288	2269	2252	2236	2226	2214	2207	2198	2194	2187	2187	2184
35	2414	2428	2427	2408	2379	2344	2306	2271	2240	2217	2196	2182	2167	2158	2144	2136	2126	2125	2120
40	2432	2454	2457	2440	2403	2355	2300	2252	2209	2177	2147	2125	2099	2081	2055	2040	2020	2016	2007
45	2432	2455	2448	2425	2381	2330	2270	2216	2164	2124	2081	2043	1994	1955	1907	1879	1842	1830	1813
50	2457	2453	2409	2350	2277	2215	2147	2105	2057	2018	1954	1889	1804	1742	1670	1631	1581	1564	1538
55	2466	2420	2336	2245	2144	2060	1985	1943	1898	1847	1747	1643	1526	1449	1369	1327	1278	1263	1236
60	2378	2304	2209	2126	2035	1959	1900	1852	1772	1644	1472	1333	1210	1138	1069	1035	996	983	962
65	2127	2069	2003	1992	1997	2013	2015	1919	1681	1403	1168	1028	923	873	823	799	764	752	731
70	1677	1656	1631	1711	1829	1989	2055	1892	1494	1148	902	771	679	633	584	556	513	496	470
75	1141	1111	1109	1255	1406	1542	1484	1315	1044	830	643	535	449	400	346	320	280	270	255
80	662	619	635	780	868	900	821	723	575	474	371	311	252	216	178	162	144	138	128
85	302	272	286	380	421	420	357	318	233	189	142	120	95.9	84.5	67.7	59.2	48.3	44.7	38.6
90	21.7	40.8	40.1	86.0	81.9	107	108	76.3	39.5	30.3	20.3	11.9	11.9	7.81	8.08	4.27	2.27	2.05	1.83
95	7.93	7.68	7.53	7.21	7.04	6.54	6.12	5.48	4.96	4.30	3.79	3.34	3.04	2.79	2.69	2.57	2.56	2.52	2.57
100	10.1	9.78	9.50	9.04	8.65	8.12	7.65	6.98	6.37	5.65	5.05	4.47	4.07	3.75	3.60	3.46	3.45	3.40	3.46
105	12.2	11.8	11.4	10.9	10.4	9.72	9.13	8.38	7.71	6.97	6.32	5.69	5.24	4.83	4.64	4.49	4.45	4.40	4.46
110	13.9	13.5	13.0	12.4	11.8	11.1	10.4	9.67	9.01	8.27	7.64	6.97	6.45	5.98	5.74	5.55	5.51	5.46	5.53
115	15.2	14.7	14.2	13.6	13.0	12.3	11.7	11.0	10.3	9.55	8.90	8.20	7.65	7.15	6.87	6.66	6.63	6.56	6.63
120	16.0	15.5	15.0	14.5	14.0	13.5	12.9	12.2	11.5	10.7	10.1	9.39	8.83	8.31	8.02	7.83	7.79	7.70	7.75
125	16.4	16.0	15.6	15.2	14.8	14.3	13.8	13.1	12.5	11.8	11.2	10.5	9.91	9.43	9.22	9.04	8.95	8.84	8.88
130	16.4	16.1	15.8	15.5	15.2	14.8	14.4	13.9	13.4	12.7	12.1	11.4	10.9	10.5	10.3	10.2	10.0	9.92	9.93
135	16.1	15.9	15.8	15.6	15.4	15.2	14.9	14.5	14.0	13.4	12.8	12.2	11.8	11.5	11.4	11.2	11.0	10.9	10.9
140	15.8	15.8	15.8	15.8	15.7	15.5	15.2	14.8	14.4	14.0	13.5	13.1	12.8	12.5	12.3	12.1	12.0	11.8	11.8
145	15.7	15.9	16.0	16.0	16.0	15.9	15.6	15.3	15.0	14.6	14.3	14.0	13.7	13.4	13.2	13.0	12.9	12.7	12.7
150	16.2	16.3	16.4	16.5	16.4	16.3	16.1	15.9	15.6	15.3	15.1	14.8	14.6	14.3	14.1	13.9	13.7	13.6	13.5
155	16.8	16.9	17.0	17.0	17.0	16.9	16.7	16.6	16.4	16.1	15.9	15.6	15.4	15.2	15.0	14.8	14.6	14.4	14.3
160	17.7	17.7	17.8	17.8	17.8	17.7	17.5	17.3	17.1	16.9	16.7	16.4	16.2	15.9	15.7	15.5	15.3	15.1	15.0
165	18.5	18.6	18.6	18.6	18.5	18.5	18.3	18.1	17.8	17.6	17.3	17.1	16.9	16.6	16.4	16.2	16.0	15.9	15.9
170	19.3	19.4	19.4	19.3	19.2	19.0	18.8	18.6	18.3	18.1	17.8	17.6	17.4	17.2	17.0	16.8	16.7	16.7	16.6
175	20.0	19.9	19.7	19.6	19.5	19.3	19.1	18.8	18.6	18.3	18.1	18.0	17.8	17.7	17.5	17.4	17.3	17.3	17.3
180	20.0	20.0	19.8	19.7	19.6	19.4	19.1	19.0	18.8	18.6	18.4	18.3	18.2	18.1	18.0	18.0	17.9	17.9	17.9

C Range: 0 - 360DEG  
 C Interval: 5.0DEG  
 Test Speed: HIGH  
 Temperature:25.3DEG  
 Operators:S  
 Test Date:03 April 2024

γ Range: 0 - 180DEG  
 γ Interval: 1.0DEG  
 Test System:EVERFINE GO-2000B\_V1 SYSTEM V2.00.446  
 Humidity:65.0%  
 Test Distance:7.850m [K=1.0000]  
 Remarks:

LUMINOUS DISTRIBUTION INTENSITY DATA

Test:U:118.49V I:4.1747A P:488.06W PF:0.9867 Freq:50.04Hz Lamp Flux:83326.5x1 lm		
NAME: ASD-LSB5B-PRO-500BR	TYPE:	WEIGHT:
SPEC.: 500W 5000K	DIM.:	SERIAL No.:
MFR.: ASD LIGHTING CORP	SUR.:	Shielding Angle:

Table--2

UNIT: X10cd

C (DEG) γ (DEG)	95	100	105	110	115	120	125	130	135	140	145	150	155	160	165	170	175	180	185
0	2144	2146	2143	2145	2144	2145	2145	2146	2145	2147	2147	2149	2149	2150	2150	2152	2152	2212	2206
5	2191	2191	2188	2189	2188	2188	2186	2185	2182	2182	2179	2178	2175	2173	2169	2167	2162	2217	2205
10	2216	2217	2215	2217	2216	2217	2216	2216	2214	2213	2210	2209	2204	2200	2194	2187	2179	2228	2210
15	2230	2231	2232	2234	2236	2238	2239	2242	2244	2247	2246	2247	2243	2239	2230	2221	2206	2248	2225
20	2231	2232	2234	2238	2243	2248	2254	2262	2269	2277	2285	2291	2293	2292	2284	2276	2257	2288	2257
25	2216	2217	2219	2224	2232	2239	2249	2262	2276	2292	2308	2325	2340	2352	2355	2353	2335	2356	2317
30	2184	2185	2189	2193	2202	2210	2224	2240	2262	2286	2315	2346	2375	2404	2419	2429	2416	2438	2393
35	2125	2126	2135	2142	2154	2165	2185	2206	2235	2270	2313	2360	2405	2446	2470	2479	2467	2489	2442
40	2016	2020	2040	2055	2080	2103	2135	2165	2205	2250	2304	2361	2414	2457	2488	2499	2488	2507	2451
45	1825	1831	1866	1894	1944	1989	2047	2092	2143	2184	2236	2284	2343	2397	2455	2500	2519	2548	2486
50	1549	1551	1590	1625	1699	1768	1868	1940	2002	2032	2075	2124	2205	2289	2385	2471	2542	2617	2577
55	1243	1237	1271	1299	1375	1452	1584	1710	1834	1899	1947	2002	2087	2182	2286	2378	2477	2621	2647
60	965	958	978	994	1046	1109	1237	1404	1653	1891	2027	2084	2101	2118	2150	2195	2276	2454	2541
65	735	728	744	749	781	817	913	1078	1417	1894	2302	2358	2196	2021	1901	1846	1896	2045	2104
70	479	475	501	510	541	572	658	799	1079	1450	1904	2080	1957	1674	1453	1311	1330	1476	1479
75	258	255	274	289	328	359	423	506	654	816	1036	1172	1262	1187	999	779	769	924	1042
80	130	128	136	143	166	183	214	245	317	373	472	544	636	623	541	397	382	487	649
85	40.2	39.8	45.0	47.3	54.0	55.8	65.1	72.1	97.5	126	163	189	239	235	188	128	112	165	264
90	1.87	1.99	2.07	2.28	2.42	2.69	2.98	3.49	3.83	4.50	4.84	5.38	5.68	6.56	6.35	6.77	6.98	8.00	8.65
95	2.59	2.72	2.83	3.07	3.26	3.62	3.99	4.52	5.05	5.67	6.17	6.85	7.16	7.68	7.87	8.21	8.42	10.2	10.3
100	3.48	3.62	3.75	4.03	4.25	4.67	5.10	5.67	6.24	6.91	7.46	8.09	8.53	8.98	9.21	9.51	9.82	12.3	12.4
105	4.48	4.63	4.76	5.06	5.35	5.79	6.27	6.91	7.49	8.17	8.75	9.42	9.95	10.5	10.8	11.2	11.3	14.2	14.3
110	5.54	5.70	5.83	6.15	6.46	6.98	7.47	8.16	8.77	9.47	10.0	10.7	11.2	11.8	12.2	12.6	12.8	15.7	15.8
115	6.64	6.81	6.93	7.23	7.56	8.08	8.61	9.31	9.94	10.6	11.2	11.9	12.4	12.9	13.3	13.7	13.9	16.8	16.9
120	7.76	7.93	8.04	8.30	8.59	9.10	9.63	10.2	10.9	11.6	12.2	12.8	13.3	13.8	14.2	14.6	14.8	17.4	17.6
125	8.86	9.00	9.14	9.34	9.54	9.93	10.4	11.0	11.5	12.2	12.8	13.4	14.0	14.3	14.7	15.1	15.2	17.8	17.9
130	9.90	10.0	10.1	10.3	10.4	10.7	11.0	11.5	11.9	12.4	12.9	13.6	14.2	14.6	14.9	15.1	15.3	17.7	17.8
135	10.9	10.9	11.0	11.2	11.3	11.4	11.6	11.9	12.2	12.6	13.0	13.4	14.0	14.6	14.7	14.9	15.1	17.4	17.5
140	11.7	11.8	11.8	11.9	12.0	12.2	12.2	12.4	12.6	12.9	13.1	13.4	13.8	14.2	14.6	14.6	14.8	17.2	17.1
145	12.6	12.5	12.5	12.6	12.7	12.8	12.9	13.0	13.1	13.3	13.5	13.8	13.9	14.2	14.3	14.5	14.6	17.1	16.9
150	13.4	13.3	13.2	13.3	13.3	13.3	13.4	13.6	13.6	13.8	13.9	14.2	14.4	14.7	14.7	14.9	15.0	17.5	17.3
155	14.1	14.1	14.0	14.0	13.9	14.0	14.0	14.1	14.2	14.4	14.5	14.7	14.8	15.1	15.3	15.4	15.6	18.0	17.8
160	14.9	14.8	14.8	14.8	14.7	14.8	14.8	14.9	14.9	15.1	15.2	15.4	15.6	15.8	16.0	16.2	16.5	18.6	18.4
165	15.7	15.7	15.7	15.7	15.7	15.7	15.7	15.8	15.8	15.9	16.1	16.3	16.4	16.7	16.8	17.1	17.4	19.2	19.0
170	16.5	16.5	16.5	16.5	16.5	16.6	16.6	16.6	16.7	16.9	17.0	17.3	17.4	17.6	17.7	17.9	18.2	19.7	19.5
175	17.2	17.2	17.2	17.3	17.3	17.4	17.4	17.4	17.5	17.7	17.9	18.1	18.3	18.5	18.8	19.2	19.6	20.2	20.0
180	17.9	17.9	18.0	18.0	18.1	18.1	18.2	18.2	18.3	18.5	18.6	18.8	19.0	19.1	19.3	19.6	20.0	20.1	19.9

C Range: 0 - 360DEG  
 C Interval: 5.0DEG  
 Test Speed: HIGH  
 Temperature:25.3DEG  
 Operators:S  
 Test Date:03 April 2024

γ Range: 0 - 180DEG  
 γ Interval: 1.0DEG  
 Test System:EVERFINE GO-2000B\_V1 SYSTEM V2.00.446  
 Humidity:65.0%  
 Test Distance:7.850m [K=1.0000]  
 Remarks:

LUMINOUS DISTRIBUTION INTENSITY DATA

Test:U:118.49V I:4.1747A P:488.06W PF:0.9867 Freq:50.04Hz Lamp Flux:83326.5x1 lm		
NAME: ASD-LSB5B-PRO-500BR	TYPE:	WEIGHT:
SPEC.: 500W 5000K	DIM.:	SERIAL No.:
MFR.: ASD LIGHTING CORP	SUR.:	Shielding Angle:

Table--3

UNIT: X10cd

C (DEG) γ (DEG)	190	195	200	205	210	215	220	225	230	235	240	245	250	255	260	265	270	275	280
0	2199	2193	2190	2185	2182	2177	2176	2173	2171	2168	2166	2162	2161	2157	2156	2151	2151	2144	2146
5	2195	2184	2174	2164	2155	2146	2140	2130	2124	2116	2111	2103	2099	2091	2090	2083	2082	2075	2078
10	2193	2175	2158	2140	2124	2107	2093	2076	2065	2049	2039	2026	2019	2007	2004	1995	1995	1986	1991
15	2199	2171	2144	2117	2091	2063	2040	2015	1996	1973	1958	1938	1928	1913	1905	1895	1894	1886	1891
20	2220	2182	2141	2100	2059	2019	1984	1950	1921	1893	1870	1846	1831	1812	1802	1790	1787	1780	1786
25	2266	2210	2150	2090	2032	1976	1928	1883	1846	1811	1783	1754	1734	1710	1695	1680	1675	1669	1679
30	2328	2253	2169	2085	2008	1935	1874	1820	1775	1733	1699	1662	1633	1600	1580	1558	1553	1548	1564
35	2377	2294	2193	2089	1993	1905	1829	1760	1705	1649	1602	1551	1514	1472	1446	1422	1419	1414	1437
40	2382	2296	2197	2082	1975	1871	1780	1685	1610	1532	1470	1409	1369	1326	1304	1282	1279	1278	1300
45	2386	2267	2142	2012	1895	1776	1670	1551	1456	1365	1301	1243	1212	1180	1167	1151	1151	1150	1169
50	2462	2302	2124	1956	1802	1650	1516	1375	1271	1181	1130	1086	1071	1054	1050	1039	1039	1038	1056
55	2593	2440	2210	1993	1775	1555	1365	1198	1093	1013	978	951	951	945	949	935	936	936	959
60	2623	2573	2378	2128	1839	1511	1223	1027	927	862	836	815	817	809	815	805	810	811	834
65	2257	2284	2252	2126	1872	1457	1095	870	772	717	695	672	667	651	652	642	652	651	674
70	1566	1647	1761	1738	1557	1182	895	703	620	567	545	507	479	439	426	408	418	419	449
75	1140	1137	1155	1075	940	724	593	493	450	402	363	317	288	255	249	242	250	250	268
80	864	832	658	485	396	308	268	233	233	215	200	170	159	148	147	144	150	150	160
85	457	374	240	149	126	99.4	82.6	69.3	72.9	69.5	72.2	67.2	68.7	63.0	63.6	59.9	65.3	64.4	73.4
90	8.51	9.14	8.78	8.83	8.67	8.59	8.28	8.06	7.67	7.39	7.02	6.62	6.41	5.33	4.71	3.94	4.31	4.42	6.08
95	10.2	10.2	9.96	9.72	9.31	8.95	8.43	7.95	7.34	6.77	6.13	5.61	5.11	4.79	4.52	4.42	4.30	4.32	4.32
100	12.3	12.1	11.8	11.4	10.8	10.4	9.78	9.28	8.67	8.13	7.49	6.99	6.46	6.15	5.84	5.72	5.58	5.60	5.59
105	14.2	13.9	13.5	13.0	12.3	11.8	11.1	10.6	10.1	9.62	9.05	8.57	8.02	7.69	7.35	7.21	7.06	7.09	7.09
110	15.7	15.4	14.9	14.4	13.7	13.2	12.6	12.1	11.6	11.2	10.6	10.2	9.63	9.28	8.94	8.81	8.65	8.69	8.69
115	16.8	16.6	16.1	15.6	15.0	14.6	14.0	13.5	13.0	12.6	12.1	11.6	11.1	10.9	10.6	10.5	10.3	10.4	10.4
120	17.6	17.4	17.1	16.7	16.1	15.6	15.1	14.7	14.2	13.8	13.3	12.9	12.5	12.4	12.1	12.0	11.9	11.9	12.0
125	18.0	17.9	17.6	17.2	16.7	16.3	15.8	15.4	15.0	14.6	14.2	14.0	13.8	13.7	13.5	13.4	13.3	13.4	13.4
130	17.9	17.9	17.7	17.4	16.9	16.5	16.1	15.7	15.4	15.1	15.0	15.0	14.9	14.8	14.7	14.6	14.6	14.6	14.6
135	17.6	17.5	17.4	17.2	16.9	16.5	16.2	15.9	15.7	15.7	15.7	15.8	15.8	15.7	15.6	15.6	15.6	15.6	15.6
140	17.1	17.1	17.0	16.9	16.7	16.5	16.4	16.4	16.3	16.3	16.3	16.4	16.3	16.3	16.3	16.3	16.3	16.4	16.4
145	16.9	16.8	16.8	16.8	16.8	16.8	16.8	16.8	16.8	16.8	16.8	16.7	16.6	16.6	16.7	16.8	16.8	16.9	17.0
150	17.2	17.2	17.1	17.1	17.1	17.2	17.2	17.2	17.2	17.2	17.1	17.0	17.0	17.0	17.1	17.2	17.2	17.3	17.4
155	17.7	17.7	17.6	17.6	17.6	17.6	17.6	17.5	17.5	17.5	17.4	17.4	17.4	17.4	17.5	17.6	17.7	17.7	17.8
160	18.3	18.2	18.1	18.0	18.0	17.9	17.8	17.8	17.8	17.7	17.7	17.7	17.7	17.8	17.9	17.9	18.0	18.1	18.2
165	18.8	18.6	18.5	18.4	18.3	18.2	18.1	18.1	18.1	18.0	18.0	18.0	18.1	18.1	18.2	18.2	18.3	18.4	18.4
170	19.3	19.1	19.0	18.8	18.7	18.6	18.5	18.4	18.3	18.2	18.3	18.2	18.2	18.2	18.3	18.3	18.4	18.4	18.4
175	19.8	19.6	19.4	19.2	19.0	18.8	18.7	18.6	18.4	18.3	18.3	18.2	18.2	18.1	18.1	18.1	18.2	18.2	18.2
180	19.9	19.7	19.6	19.4	19.2	18.9	18.8	18.6	18.4	18.3	18.2	18.1	18.0	18.0	17.9	17.9	17.9	17.9	17.9

C Range: 0 - 360DEG  
 C Interval: 5.0DEG  
 Test Speed: HIGH  
 Temperature:25.3DEG  
 Operators:S  
 Test Date:03 April 2024

γ Range: 0 - 180DEG  
 γ Interval: 1.0DEG  
 Test System:EVERFINE GO-2000B\_V1 SYSTEM V2.00.446  
 Humidity:65.0%  
 Test Distance:7.850m [K=1.0000]  
 Remarks:

LUMINOUS DISTRIBUTION INTENSITY DATA

Test:U:118.49V I:4.1747A P:488.06W PF:0.9867 Freq:50.04Hz Lamp Flux:83326.5x1 lm		
NAME: ASD-LSB5B-PRO-500BR	TYPE:	WEIGHT:
SPEC.: 500W 5000K	DIM.:	SERIAL No.:
MFR.: ASD LIGHTING CORP	SUR.:	Shielding Angle:

Table--4

UNIT: X10cd

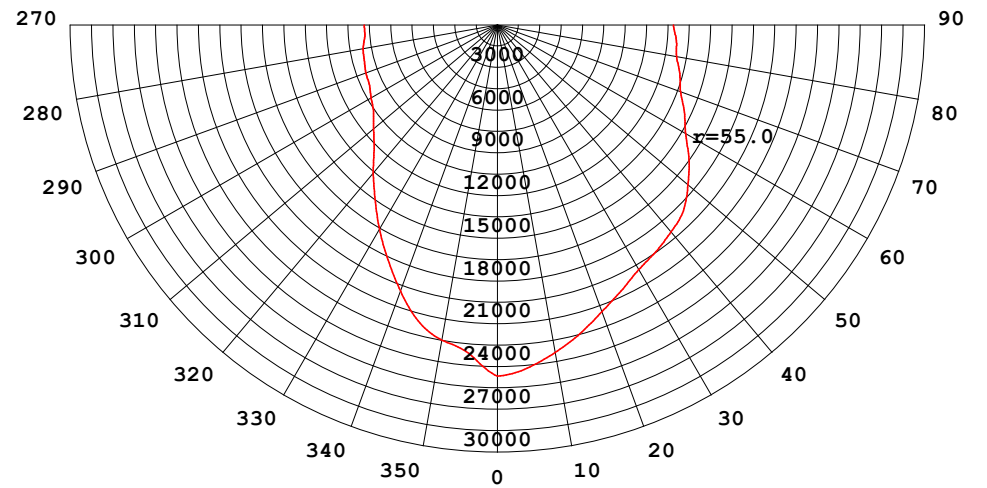
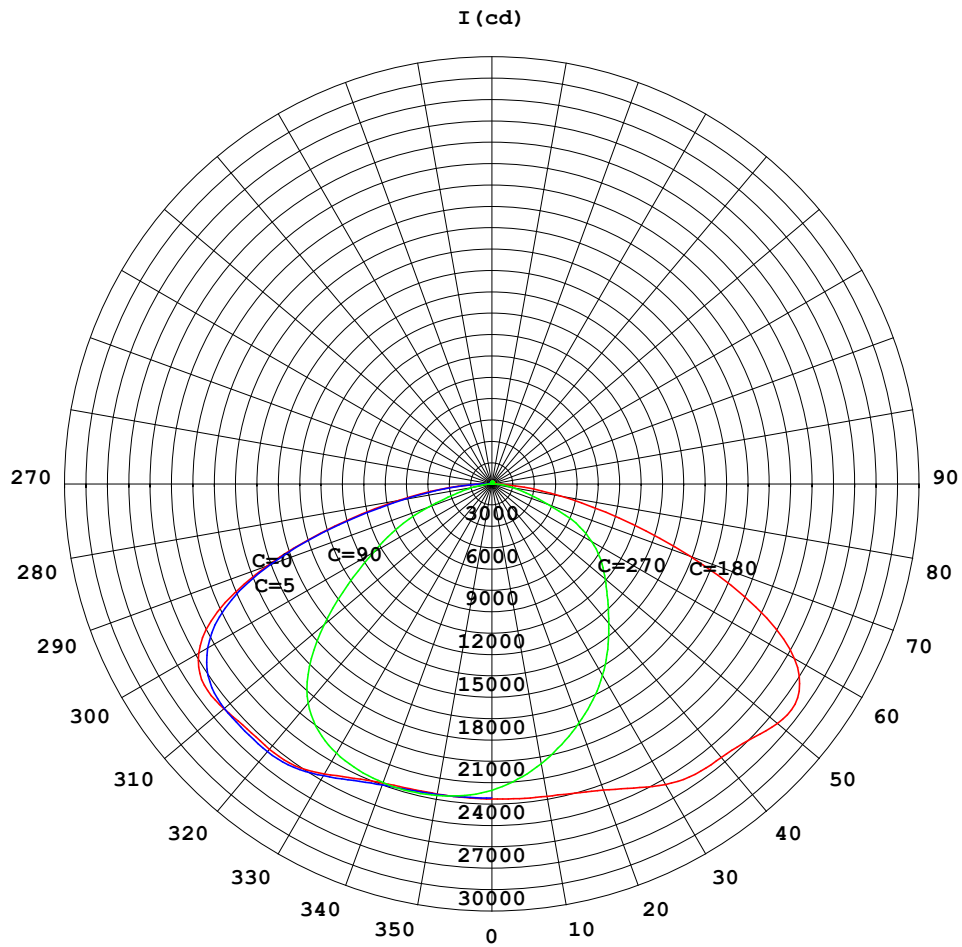
C (DEG) γ (DEG)	285	290	295	300	305	310	315	320	325	330	335	340	345	350	355				
0	2143	2145	2144	2145	2145	2146	2145	2147	2147	2149	2149	2150	2150	2152	2152				
5	2076	2080	2080	2086	2087	2093	2096	2102	2107	2115	2119	2126	2132	2139	2146				
10	1990	1997	1999	2010	2016	2028	2035	2049	2060	2075	2087	2101	2114	2128	2140				
15	1891	1902	1909	1923	1935	1953	1968	1990	2010	2034	2054	2077	2098	2120	2140				
20	1790	1804	1815	1835	1853	1878	1900	1931	1960	1994	2026	2060	2093	2125	2154				
25	1688	1708	1725	1751	1775	1806	1837	1875	1915	1962	2009	2058	2106	2153	2194				
30	1580	1609	1636	1670	1701	1739	1776	1822	1874	1936	2002	2071	2141	2205	2252				
35	1459	1497	1532	1579	1620	1669	1715	1772	1836	1912	1997	2087	2179	2260	2291				
40	1324	1365	1404	1461	1516	1584	1648	1724	1804	1895	1993	2095	2193	2272	2285				
45	1189	1225	1260	1315	1375	1458	1542	1643	1740	1843	1945	2057	2158	2232	2271				
50	1069	1095	1118	1164	1215	1297	1387	1506	1617	1740	1863	1998	2131	2209	2285				
55	968	984	993	1026	1063	1136	1226	1358	1498	1658	1820	1990	2152	2248	2315				
60	843	860	866	892	923	986	1072	1218	1402	1620	1837	2043	2176	2269	2255				
65	684	709	723	754	784	842	925	1089	1333	1630	1892	2053	2116	2116	2039				
70	474	527	564	608	640	700	787	961	1216	1525	1697	1729	1682	1650	1558				
75	285	333	370	431	481	546	617	749	918	1112	1225	1257	1172	1143	1102				
80	168	189	213	262	298	349	384	450	505	614	684	760	797	804	709				
85	79.1	93.5	101	116	125	135	140	162	193	253	306	424	530	544	386				
90	12.2	8.33	12.7	11.4	19.2	13.9	12.7	27.5	24.1	42.9	34.6	90.1	95.6	140	72.5				
95	4.50	5.07	5.70	6.34	7.03	7.70	8.27	8.70	9.05	9.23	9.44	9.56	9.78	9.84	10.0				
100	5.78	6.01	6.53	7.08	7.79	8.41	9.07	9.55	10.1	10.4	10.9	11.3	11.7	11.9	12.3				
105	7.32	7.57	8.06	8.53	9.15	9.67	10.3	10.8	11.4	11.9	12.6	13.0	13.6	14.0	14.4				
110	8.95	9.22	9.72	10.1	10.6	11.0	11.5	12.0	12.6	13.3	14.0	14.6	15.3	15.8	16.2				
115	10.6	10.8	11.3	11.7	12.2	12.5	13.1	13.5	14.1	14.6	15.3	15.9	16.6	17.1	17.4				
120	12.1	12.3	12.7	13.1	13.6	14.0	14.5	14.9	15.5	15.9	16.5	17.0	17.5	17.9	18.2				
125	13.6	13.7	14.0	14.3	14.8	15.2	15.7	16.1	16.5	16.9	17.3	17.7	18.0	18.3	18.6				
130	14.8	14.9	15.1	15.3	15.7	16.1	16.5	16.8	17.2	17.4	17.6	17.9	18.1	18.3	18.5				
135	15.8	16.0	16.1	16.2	16.5	16.7	17.0	17.2	17.4	17.6	17.8	18.0	18.1	18.2	18.3				
140	16.6	16.7	17.0	17.0	17.1	17.2	17.4	17.4	17.6	17.7	17.9	18.0	18.1	18.1	18.0				
145	17.1	17.2	17.4	17.6	17.6	17.7	17.8	17.8	17.9	17.9	17.9	17.9	18.0	18.0	17.9				
150	17.5	17.7	17.8	17.9	18.0	18.1	18.2	18.2	18.2	18.2	18.2	18.2	18.2	18.2	18.1				
155	17.9	18.0	18.1	18.2	18.3	18.4	18.5	18.6	18.7	18.7	18.7	18.6	18.6	18.6	18.6				
160	18.3	18.4	18.5	18.5	18.6	18.6	18.7	18.8	19.0	19.1	19.1	19.1	19.1	19.2	19.2				
165	18.5	18.6	18.7	18.8	18.8	18.8	18.9	19.0	19.1	19.2	19.4	19.4	19.5	19.5	19.6				
170	18.5	18.6	18.7	18.8	18.8	18.9	18.9	19.0	19.2	19.3	19.5	19.6	19.7	19.8	20.0				
175	18.3	18.4	18.4	18.5	18.6	18.6	18.7	18.8	19.0	19.1	19.2	19.4	19.6	19.9	20.2				
180	18.0	18.0	18.1	18.1	18.2	18.2	18.3	18.4	18.6	18.8	19.0	19.1	19.3	19.6	20.0				

C Range: 0 - 360DEG  
 C Interval: 5.0DEG  
 Test Speed: HIGH  
 Temperature:25.3DEG  
 Operators:S  
 Test Date:03 April 2024

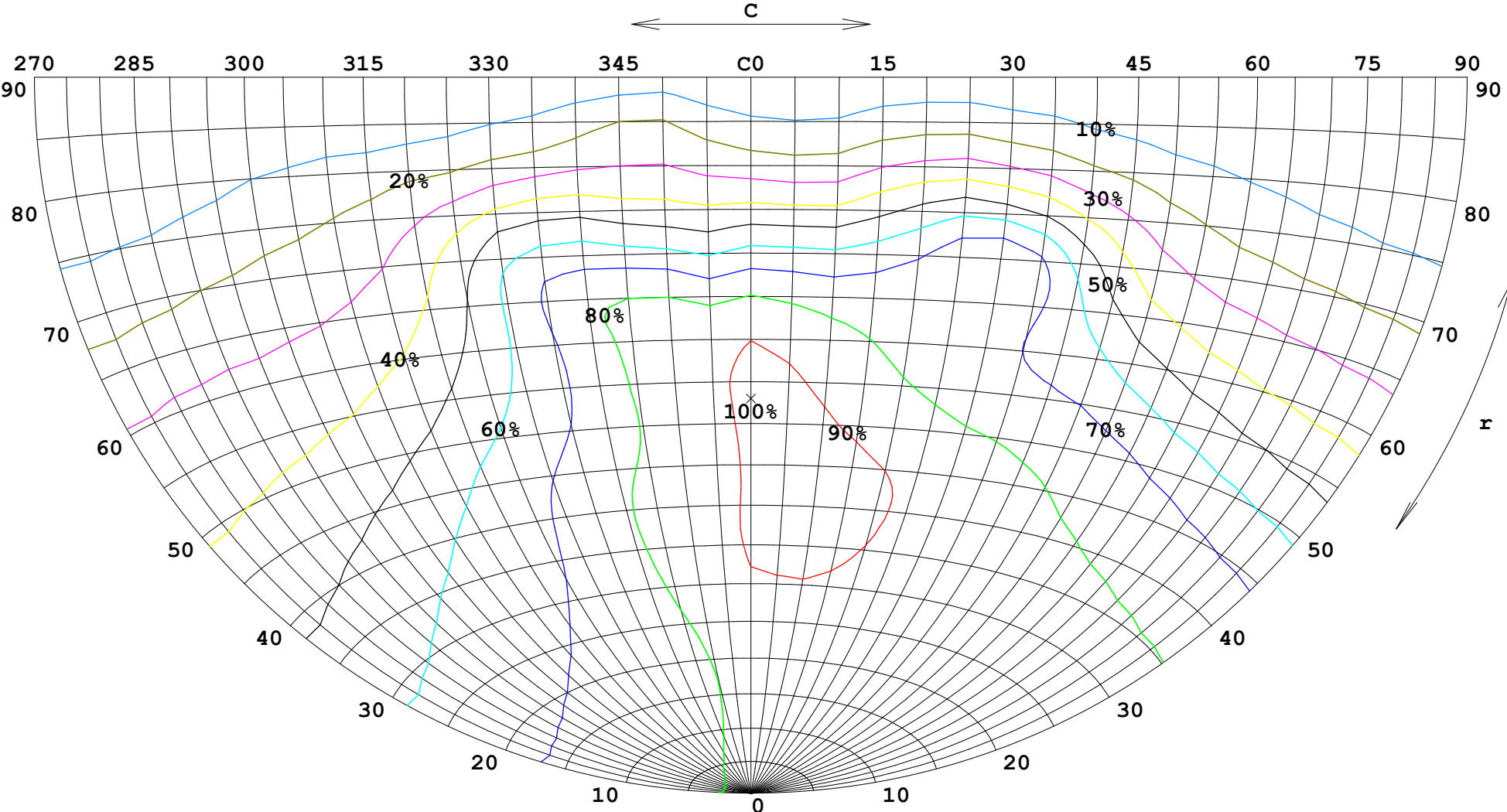
γ Range: 0 - 180DEG  
 γ Interval: 1.0DEG  
 Test System:EVERFINE GO-2000B\_V1 SYSTEM V2.00.446  
 Humidity:65.0%  
 Test Distance:7.850m [K=1.0000]  
 Remarks:

**FLUX DATA:**

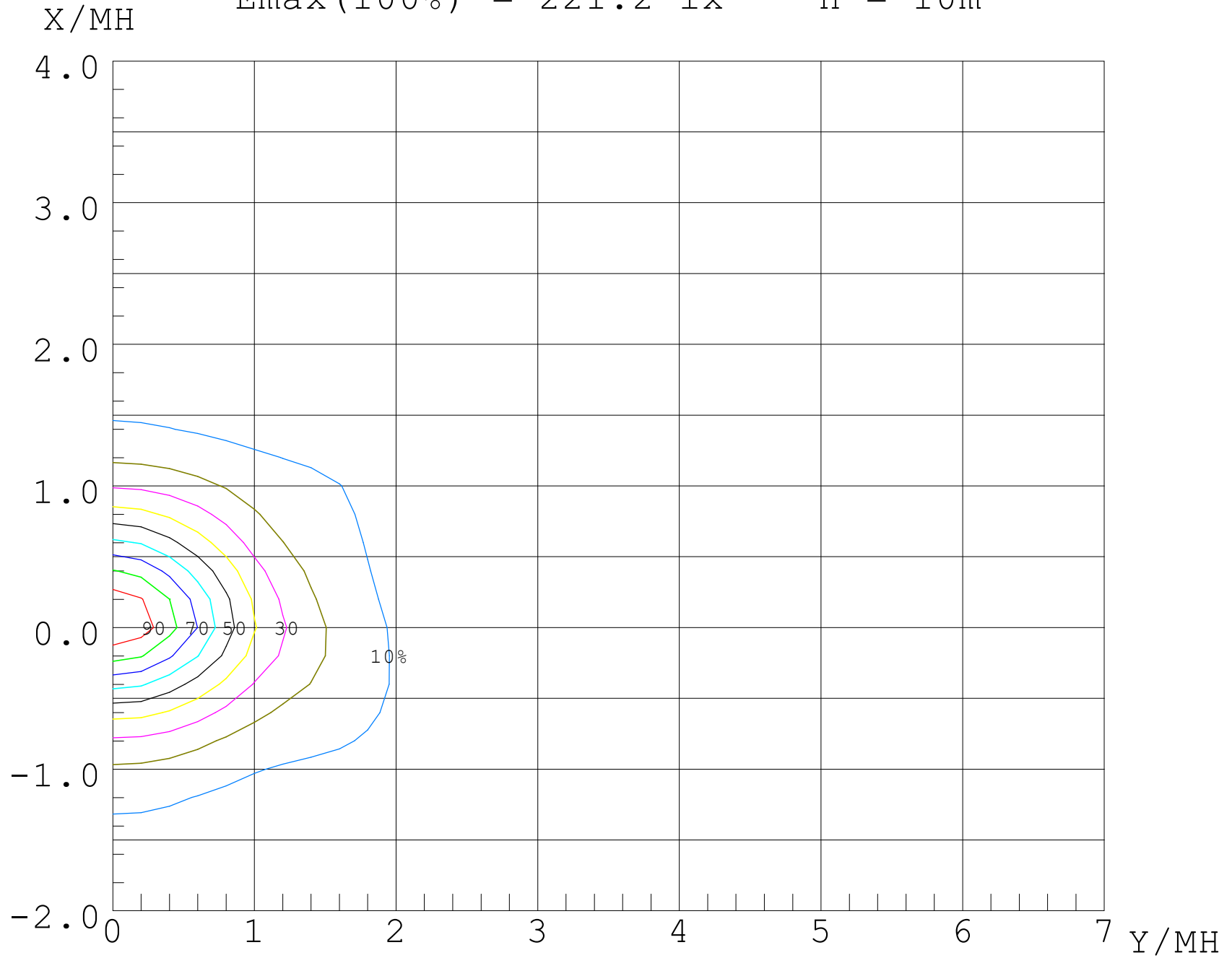
LOR: 100.0 %  
 STREET DOWN: 44803 lm  
 STREET UP: 342.1 lm  
 HOUSE DOWN: 37745 lm  
 HOUSE UP: 436.5 lm



**$I_{max}(100\%) = 26471 \text{ cd}$**



$E_{\max}(100\%) = 221.2 \text{ lx}$        $H = 10\text{m}$



UF (%)

80

70

60

50

40

30

20

10

0

-2

-1

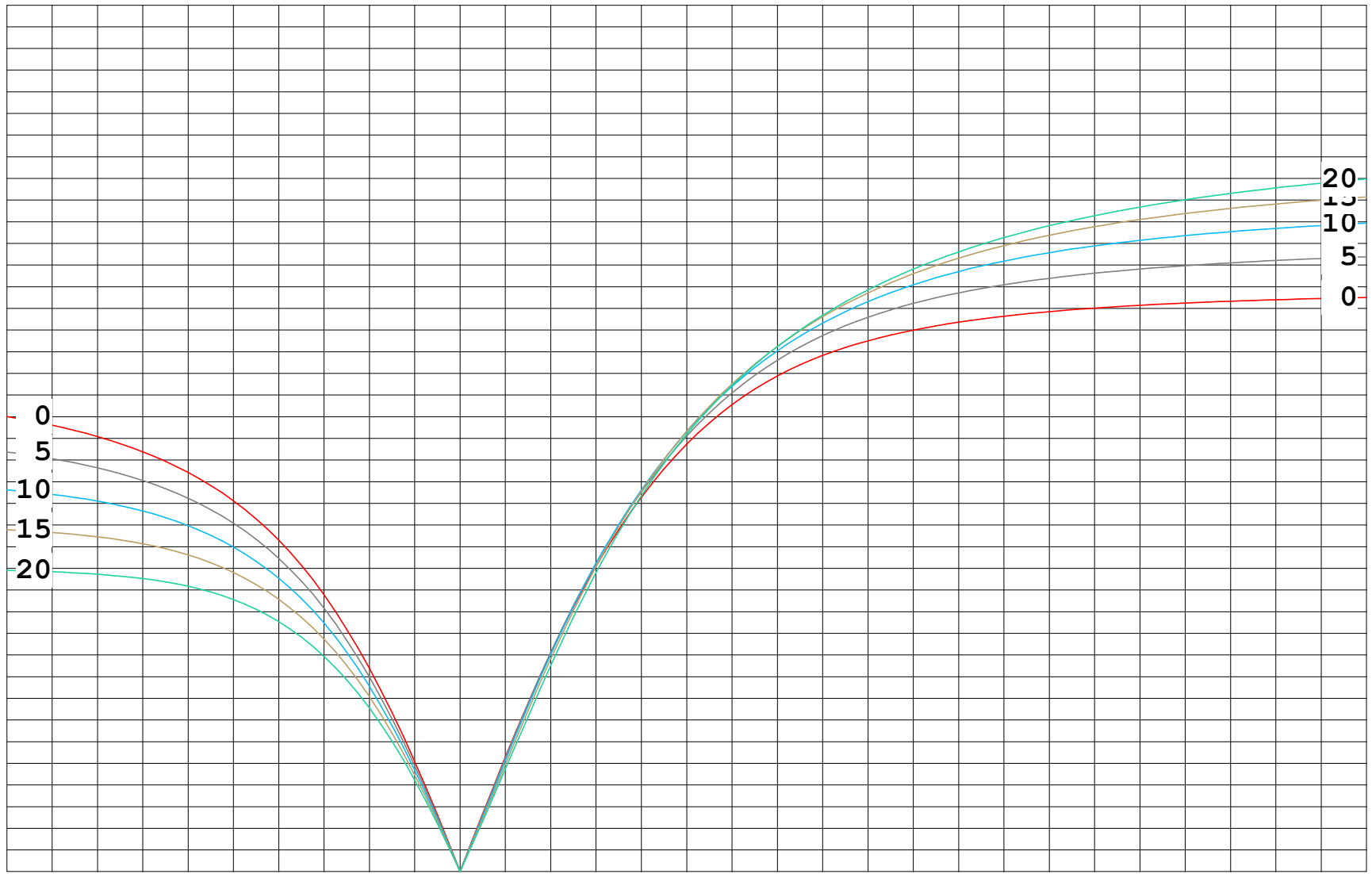
0

1

2

3

4 X/MH



20  
15  
10  
5  
0

0  
5  
10  
15  
20