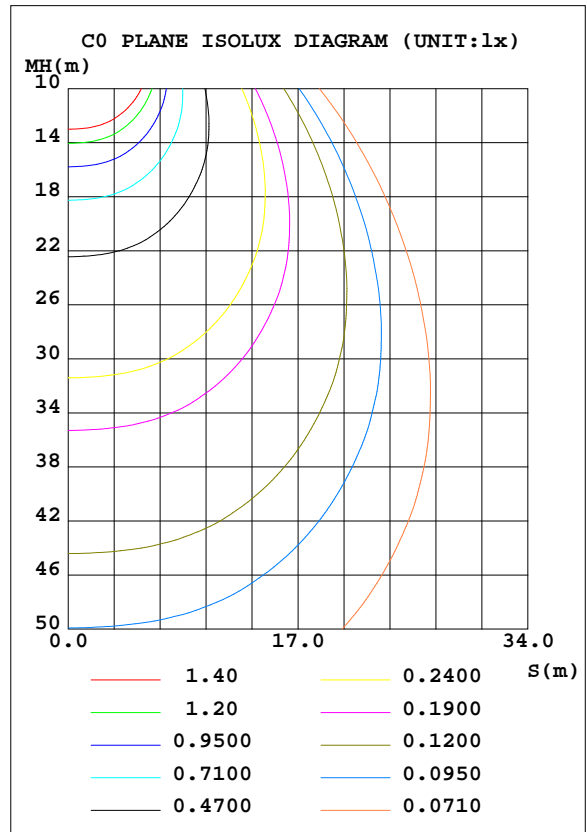
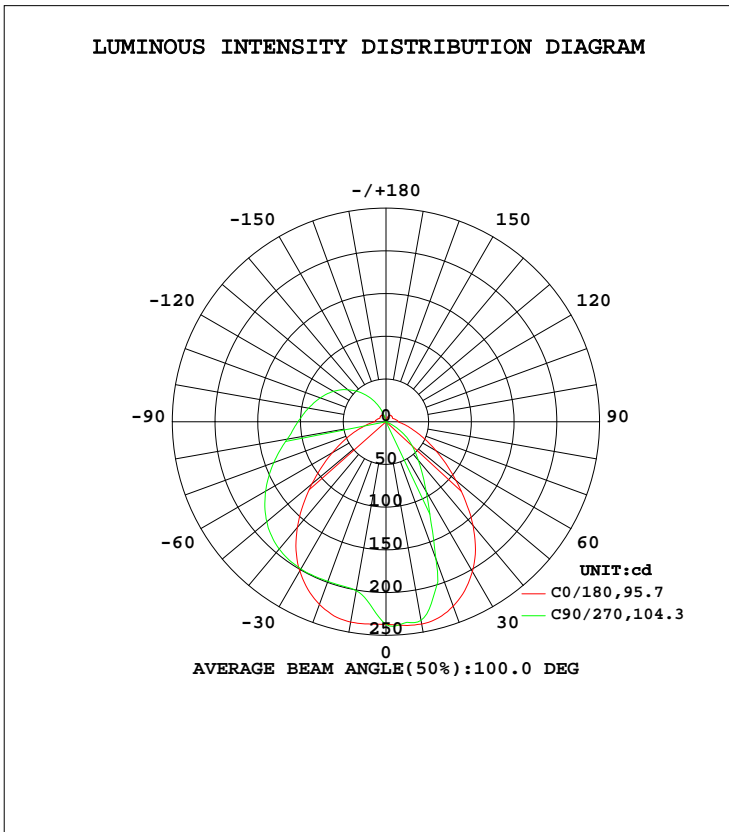


LUMINAIRE PHOTOMETRIC TEST REPORT

Test:U:120.1V I:0.1237A P:14.54W PF:0.9791 Lamp Flux:834.257x1 lm		
NAME: LED luminaires	TYPE:N/A	WEIGHT:N/A
SPEC.:ASD-LVF24M-3D15CC-BK 4000K	DIM.: N/A	SERIAL No.:N/A
MFR.: ASD Lighting corp	SUR.:N/A	Shielding Angle:N/A

DATA OF LAMP		PHOTOMETRIC DATA Eff: 57.38 lm/W			
MODEL	PSZ2GH221125002-10	I <sub>max</sub> (cd)	242.1	S/MH(C0/180)	1.25
NOMINAL POWER(W)		LOR(%)	100.0	S/MH(C90/270)	0.81
RATED VOLTAGE(V)	120	TOTAL FLUX(lm)	834.26	η UP, DN(C0-180)	18.8,55.4
NOMINAL FLUX(lm)	834.257	CIE CLASS	SEMI-D.	η UP, DN(C180-360)	1.2,24.6
LAMPS INSIDE	1	η up(%)	20.0	CIBSE SHR NOM	1.25
TEST VOLTAGE(V)	120	η down(%)	80.0	CIBSE SHR MAX	1.25



C Range: 0 - 360DEG  
 C Interval: 22.5DEG  
 Test Speed: HIGH  
 Temperature:25.1DEG  
 Operators:Evan  
 Test Date:2022-11-29

γ Range: 0 - 180DEG  
 γ Interval: 1.0DEG  
 Test System:EVERFINE GO-R5000\_V2 SYSTEM V2.0.351  
 Humidity:42%  
 Test Distance:2.532m [K=1.0000]  
 Remarks:

ZONAL FLUX DIAGRAM

ZONAL FLUX DIAGRAM:

γ	C0	C45	C90	C135	C180	C225	C270	C315	γ	Φ zone	Φ total	%lum,lamp
10	238.1	209.0	201.0	210.0	240.5	240.2	236.1	237.0	0- 10	21.93	21.93	2.63,2.63
20	227.6	202.6	198.9	202.0	229.9	218.2	171.1	218.5	10- 20	61.74	83.67	10,10
30	201.6	198.8	199.1	197.5	202.4	148.6	94.11	151.7	20- 30	88.15	171.8	20.6,20.6
40	161.4	191.6	194.5	189.5	158.6	88.05	58.98	90.68	30- 40	100.3	272.1	32.6,32.6
50	113.2	180.1	182.1	177.7	107.1	54.12	36.46	55.64	40- 50	101.8	373.9	44.8,44.8
60	72.54	163.5	162.8	161.0	67.44	31.40	14.53	32.41	50- 60	93.93	467.8	56.1,56.1
70	43.39	143.3	139.7	140.9	39.81	8.520	0.1104	9.410	60- 70	80.21	548.1	65.7,65.7
80	23.97	121.6	117.5	119.4	23.47	2.272	0.1415	1.225	70- 80	65.56	613.6	73.6,73.6
90	13.23	104.1	103.1	103.0	14.72	1.272	0.1894	0.7728	80- 90	53.83	667.4	80,80
100	11.81	90.61	92.12	89.73	12.51	1.070	0.2095	0.7401	90-100	45.99	713.4	85.5,85.5
110	10.12	77.50	81.97	76.77	10.27	0.6916	0.1685	0.5521	100-110	38.61	752.0	90.1,90.1
120	8.604	64.17	71.18	63.47	8.835	0.4013	0.1397	0.2825	110-120	30.82	782.9	93.8,93.8
130	9.073	49.91	58.33	49.40	9.474	0.1293	0.1397	0.1429	120-130	22.80	805.7	96.6,96.6
140	9.359	35.43	43.89	35.03	9.520	0.2737	0.1395	0.1886	130-140	15.24	820.9	98.4,98.4
150	9.091	20.76	28.04	20.47	8.998	0.9949	0.1622	0.6056	140-150	8.667	829.6	99.4,99.4
160	6.768	7.186	12.06	7.011	6.139	2.652	0.2246	0.6182	150-160	3.780	833.3	99.9,99.9
170	1.486	1.471	0.5186	1.272	1.056	0.8250	0.2607	0.2991	160-170	0.8634	834.2	100,100
180	0.3306	0.3560	0.3676	0.3734	0.3474	0.3468	0.3617	0.3721	170-180	0.0576	834.3	100,100
DEG	LUMINOUS INTENSITY:cd									UNIT:lm		

Conical surface Flux(90deg): 323.56 lm

%lum = 38.8%  
%lamp = 38.8%

Conical surface Flux(120deg): 467.84 lm

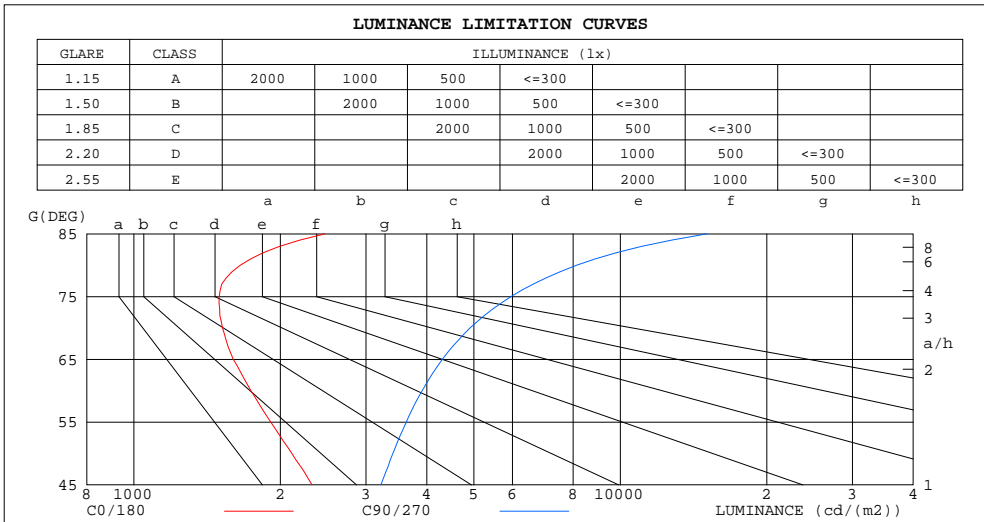
%lum = 56.1%  
%lamp = 56.1%

C Range: 0 - 360DEG  
C Interval: 22.5DEG  
Test Speed: HIGH  
Temperature:25.1DEG  
Operators:Evan  
Test Date:2022-11-29

γ Range: 0 - 180DEG  
γ Interval: 1.0DEG  
Test System:EVERFINE GO-R5000\_V2 SYSTEM V2.0.351  
Humidity:42%  
Test Distance:2.532m [K=1.0000]  
Remarks:

LUMINANCE LIMITATION CURVES

Test:U:120.1V I:0.1237A P:14.54W PF:0.9791 Lamp Flux:834.257x1 lm		
NAME: LED luminaires	TYPE:N/A	WEIGHT:N/A
SPEC.:ASD-LVF24M-3D15CC-BK 4000K	DIM.: N/A	SERIAL No.:N/A
MFR.: ASD Lighting corp	SUR.:N/A	Shielding Angle:N/A



LUMINANCE cd/(m2)		
G (DEG)	C0/180	C90/270
85	2470	15071
80	1655	8133
75	1498	5962
70	1522	4911
65	1601	4308
60	1740	3914
55	1911	3631
50	2112	3407
45	2324	3220

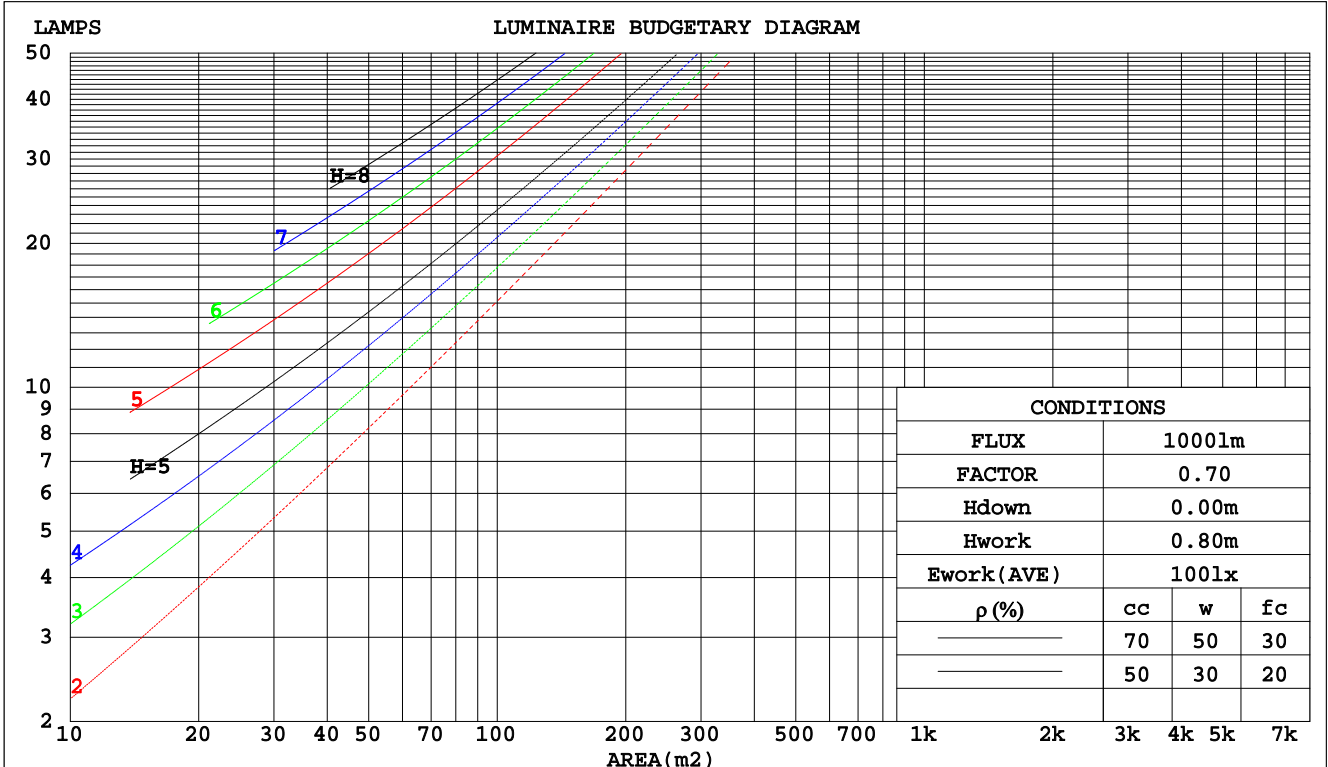
C Range: 0 - 360DEG  
 C Interval: 22.5DEG  
 Test Speed: HIGH  
 Temperature:25.1DEG  
 Operators:Evan  
 Test Date:2022-11-29

γ Range: 0 - 180DEG  
 γ Interval: 1.0DEG  
 Test System:EVERFINE GO-R5000\_V2 SYSTEM V2.0.351  
 Humidity:42%  
 Test Distance:2.532m [K=1.0000]  
 Remarks:

CU AND LUMINAIRE BUDGETARY ESTIMATE DIAGRAM

Test:U:120.1V I:0.1237A P:14.54W PF:0.9791 Lamp Flux:834.257x1 lm		
NAME: LED luminaires	TYPE:N/A	WEIGHT:N/A
SPEC.:ASD-LVF24M-3D15CC-BK 4000K	DIM.: N/A	SERIAL No.:N/A
MFR.: ASD Lighting corp	SUR.:N/A	Shielding Angle:N/A

pcc	80%			70%			50%			30%			10%			0
pw	50%	30%	10%	50%	30%	10%	50%	30%	10%	50%	30%	10%	50%	30%	10%	0
pfc	20%			20%			20%			20%			20%			0
RCR	RCR:Room Cavity Ratio						Coefficients of Utilization(CU)									
0.0	1.14	1.14	1.14	1.09	1.09	1.09	1.00	1.00	1.00	.91	.91	.91	.84	.84	.84	.80
1.0	.96	.91	.87	.92	.88	.84	.84	.81	.77	.77	.74	.71	.70	.68	.66	.62
2.0	.83	.76	.70	.80	.73	.67	.73	.67	.63	.67	.62	.58	.61	.57	.54	.51
3.0	.73	.64	.58	.70	.62	.56	.64	.58	.52	.58	.53	.49	.53	.49	.46	.42
4.0	.64	.55	.49	.62	.54	.47	.57	.50	.44	.52	.46	.42	.48	.43	.39	.36
5.0	.58	.48	.42	.55	.47	.41	.51	.44	.38	.47	.41	.36	.43	.38	.34	.31
6.0	.52	.43	.36	.50	.41	.35	.46	.39	.34	.42	.36	.32	.39	.34	.30	.27
7.0	.47	.38	.32	.45	.37	.31	.42	.35	.30	.39	.33	.28	.36	.31	.27	.24
8.0	.43	.34	.29	.41	.33	.28	.38	.31	.26	.35	.30	.25	.33	.28	.24	.22
9.0	.39	.31	.26	.38	.30	.25	.35	.29	.24	.33	.27	.23	.30	.25	.22	.20
10.0	.36	.28	.23	.35	.28	.23	.33	.26	.22	.30	.25	.21	.28	.23	.20	.18



C Range: 0 - 360DEG  
 C Interval: 22.5DEG  
 Test Speed: HIGH  
 Temperature:25.1DEG  
 Operators:Evan  
 Test Date:2022-11-29

γ Range: 0 - 180DEG  
 γ Interval: 1.0DEG  
 Test System:EVERFINE GO-R5000\_V2 SYSTEM V2.0.351  
 Humidity:42%  
 Test Distance:2.532m [K=1.0000]  
 Remarks:

WEC AND CCEC

Test:U:120.1V I:0.1237A P:14.54W PF:0.9791 Lamp Flux:834.257x1 lm		
NAME: LED luminaires	TYPE:N/A	WEIGHT:N/A
SPEC.:ASD-LVF24M-3D15CC-BK 4000K	DIM.: N/A	SERIAL No.:N/A
MFR.: ASD Lighting corp	SUR.:N/A	Shielding Angle:N/A

ρcc	80%			70%			50%			30%			10%			0
ρw	50%	30%	10%	50%	30%	10%	50%	30%	10%	50%	30%	10%	50%	30%	10%	0
ρfc	20%			20%			20%			20%			20%			0
RCR	RCR:Room Cavity Ratio						Wall Exitance Coefficients(WEC)									
0.0																
1.0	.359	.204	.065	.346	.197	.063	.321	.184	.059	.298	.172	.055	.277	.161	.052	
2.0	.314	.172	.053	.302	.166	.051	.279	.155	.048	.259	.145	.045	.239	.135	.043	
3.0	.280	.149	.045	.270	.144	.043	.249	.135	.041	.231	.126	.039	.213	.118	.037	
4.0	.254	.132	.039	.244	.128	.038	.226	.120	.036	.208	.112	.034	.193	.105	.032	
5.0	.232	.118	.034	.223	.114	.033	.206	.107	.032	.190	.101	.030	.176	.094	.028	
6.0	.213	.107	.031	.205	.104	.030	.190	.097	.028	.175	.091	.027	.162	.085	.025	
7.0	.197	.097	.028	.190	.095	.027	.176	.089	.026	.163	.083	.024	.150	.078	.023	
8.0	.183	.090	.025	.177	.087	.025	.164	.082	.023	.152	.077	.022	.140	.072	.021	
9.0	.171	.083	.023	.165	.080	.023	.153	.076	.021	.142	.071	.020	.131	.067	.019	
10.0	.161	.077	.021	.155	.075	.021	.144	.070	.020	.133	.066	.019	.124	.062	.018	

ρcc	80%			70%			50%			30%			10%			0
ρw	50%	30%	10%	50%	30%	10%	50%	30%	10%	50%	30%	10%	50%	30%	10%	0
ρfc	20%			20%			20%			20%			20%			0
RCR	RCR:Room Cavity Ratio						Ceiling Cavity Exitance Coefficients(CCEC)									
0.0	.343	.343	.343	.293	.293	.293	.200	.200	.200	.115	.115	.115	.037	.037	.037	
1.0	.337	.309	.284	.289	.265	.244	.197	.183	.169	.114	.106	.098	.036	.034	.032	
2.0	.330	.286	.250	.282	.247	.216	.194	.171	.151	.112	.099	.088	.036	.032	.029	
3.0	.322	.270	.228	.276	.233	.198	.189	.162	.139	.109	.094	.082	.035	.031	.027	
4.0	.314	.257	.214	.270	.222	.186	.185	.155	.131	.107	.091	.077	.035	.030	.025	
5.0	.307	.247	.204	.263	.214	.177	.181	.150	.125	.105	.088	.074	.034	.029	.024	
6.0	.299	.239	.196	.257	.207	.171	.177	.145	.121	.103	.085	.072	.033	.028	.024	
7.0	.292	.233	.191	.251	.202	.166	.174	.141	.118	.101	.083	.070	.033	.027	.023	
8.0	.286	.227	.187	.246	.197	.163	.170	.138	.116	.099	.082	.069	.032	.027	.023	
9.0	.280	.222	.184	.241	.193	.160	.167	.136	.114	.097	.080	.068	.032	.026	.022	
10.0	.274	.218	.181	.236	.190	.158	.164	.133	.112	.096	.079	.067	.031	.026	.022	

C Range: 0 - 360DEG  
 C Interval: 22.5DEG  
 Test Speed: HIGH  
 Temperature:25.1DEG  
 Operators:Evan  
 Test Date:2022-11-29

γ Range: 0 - 180DEG  
 γ Interval: 1.0DEG  
 Test System:EVERFINE GO-R5000\_V2 SYSTEM V2.0.351  
 Humidity:42%  
 Test Distance:2.532m [K=1.0000]  
 Remarks:

UGR(Unified Glare Rating) Table

Test:U:120.1V I:0.1237A P:14.54W PF:0.9791 Lamp Flux:834.257x1 lm										
NAME: LED luminaires					TYPE:N/A			WEIGHT:N/A		
SPEC.:ASD-LVF24M-3D15CC-BK 4000K					DIM.: N/A			SERIAL No.:N/A		
MFR.: ASD Lighting corp					SUR.:N/A			Shielding Angle:N/A		
ceiling/cavity	0.7	0.7	0.5	0.5	0.3	0.7	0.7	0.5	0.5	0.3
walls	0.5	0.3	0.5	0.3	0.3	0.5	0.3	0.5	0.3	0.3
working plane	0.2	0.2	0.2	0.2	0.2	0.2	0.2	0.2	0.2	0.2
Room dimensions	Viewed crosswise					Viewed endwise				
x = 2H y = 2H	15.9	17.2	16.4	17.7	18.3	17.8	19.1	18.3	19.6	20.2
3H	17.5	18.7	18.0	19.2	19.9	20.4	21.6	20.9	22.1	22.8
4H	18.2	19.3	18.8	19.9	20.5	21.8	22.9	22.4	23.5	24.1
6H	18.8	19.8	19.4	20.4	21.1	23.3	24.4	23.9	25.0	25.6
8H	19.0	20.0	19.6	20.7	21.3	24.2	25.2	24.8	25.8	26.5
12H	19.3	20.3	19.9	20.9	21.6	25.2	26.1	25.8	26.8	27.5
4H 2H	17.3	18.5	17.9	19.0	19.7	18.6	19.7	19.2	20.3	21.0
3H	19.4	20.4	20.1	21.0	21.8	21.4	22.4	22.1	23.0	23.8
4H	20.5	21.4	21.1	22.0	22.8	23.0	23.9	23.7	24.6	25.3
6H	21.4	22.2	22.1	22.9	23.7	24.8	25.6	25.4	26.2	27.0
8H	21.8	22.6	22.5	23.3	24.1	25.7	26.5	26.4	27.1	27.9
12H	22.2	22.9	22.9	23.6	24.4	26.8	27.5	27.5	28.2	29.0
8H 4H	21.7	22.5	22.4	23.2	23.9	23.6	24.3	24.3	25.0	25.8
6H	23.2	23.8	23.9	24.6	25.4	25.6	26.3	26.4	27.0	27.8
8H	23.9	24.5	24.7	25.2	26.1	26.8	27.4	27.5	28.1	29.0
12H	24.6	25.1	25.4	25.9	26.7	28.2	28.7	28.9	29.4	30.3
12H 4H	22.0	22.7	22.7	23.4	24.2	23.7	24.4	24.4	25.1	25.9
6H	23.8	24.3	24.5	25.1	25.9	25.9	26.4	26.6	27.2	28.0
8H	24.7	25.2	25.5	26.0	26.8	27.2	27.7	27.9	28.4	29.3
Variations with the observer position at spacings:										
S = 1.0H	+ 0.1 / - 0.1					+ 0.1 / - 0.1				
1.5H	+ 0.2 / - 0.3					+ 0.2 / - 0.3				
2.0H	+ 0.3 / - 0.5					+ 0.3 / - 0.4				

CIE Pub.117 Corrected 834.3 lm Total Lamp Luminous Flux. (8log(F/F0) = -0.6)

C Range: 0 - 360DEG  
 C Interval: 22.5DEG  
 Test Speed: HIGH  
 Temperature:25.1DEG  
 Operators:Evan  
 Test Date:2022-11-29

γ Range: 0 - 180DEG  
 γ Interval: 1.0DEG  
 Test System:EVERFINE GO-R5000\_V2 SYSTEM V2.0.351  
 Humidity:42%  
 Test Distance:2.532m [K=1.0000]  
 Remarks:

UTILIZATION FACTORS TABLE

Test:U:120.1V I:0.1237A P:14.54W PF:0.9791 Lamp Flux:834.257x1 lm		
NAME: LED luminaires	TYPE:N/A	WEIGHT:N/A
SPEC.:ASD-LVF24M-3D15CC-BK 4000K	DIM.: N/A	SERIAL No.:N/A
MFR.: ASD Lighting corp	SUR.:N/A	Shielding Angle:N/A

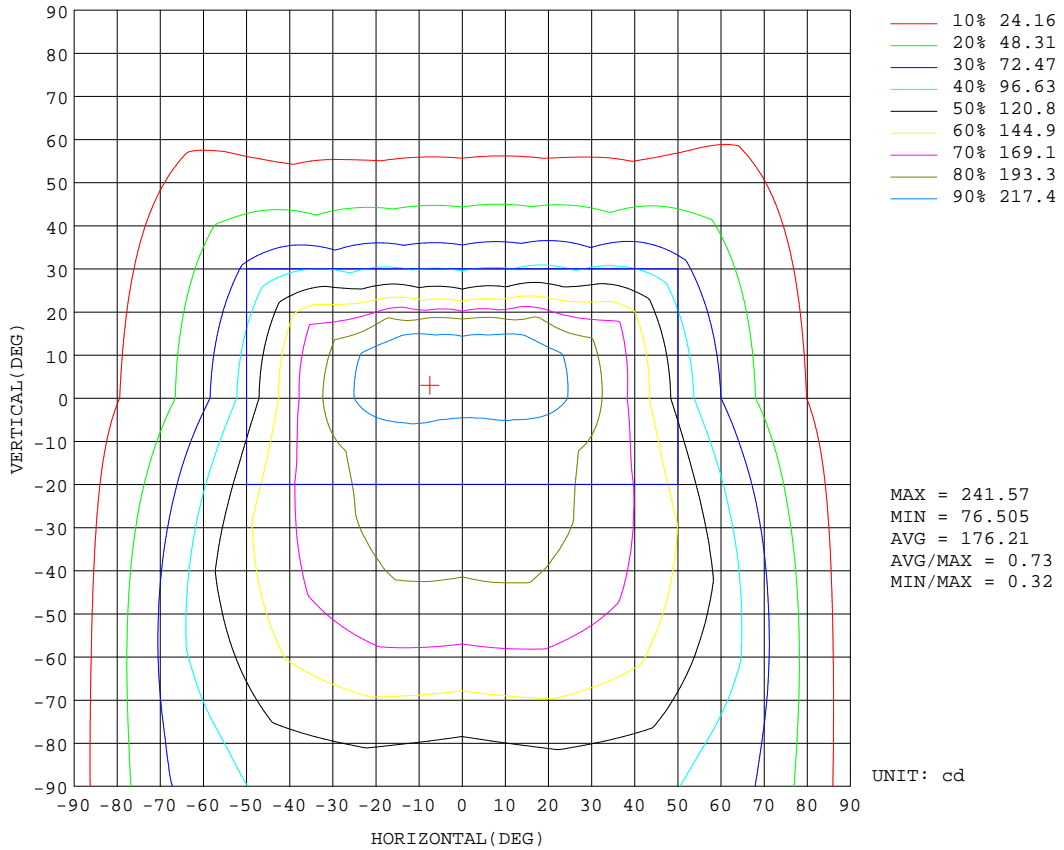
REFLECTANCE										
Ceiling	0.8	0.8	0.8	0.7	0.7	0.7	0.5	0.5	0.5	0
Walls	0.7	0.5	0.3	0.7	0.5	0.3	0.7	0.5	0.3	0
Working plane	0.2	0.2	0.2	0.2	0.2	0.2	0.2	0.2	0.2	0
ROOM INDEX	UTILIZATION FACTORS(PERCENT) $k(RI) \times RCR = 5$									
k = 0.60	50	38	31	49	38	31	47	37	30	24
0.80	59	47	39	57	46	39	55	44	38	30
1.00	67	54	46	65	53	46	61	53	44	36
1.25	73	61	53	71	60	52	67	57	51	41
1.50	78	67	59	76	65	58	71	62	55	45
2.00	85	75	67	82	73	65	76	68	62	51
2.50	90	80	72	86	77	70	80	73	67	54
3.00	93	84	77	89	81	75	82	76	71	57
4.00	98	90	84	93	87	81	86	81	76	61
5.00	100	94	88	96	90	85	88	84	80	64
ROOM INDEX	UF(total)									Direct
According to DIN EN 13032-2 2004			Suspended				SHRNOM = 1.25			

C Range: 0 - 360DEG  
 C Interval: 22.5DEG  
 Test Speed: HIGH  
 Temperature:25.1DEG  
 Operators:Evan  
 Test Date:2022-11-29

$\gamma$  Range: 0 - 180DEG  
 $\gamma$  Interval: 1.0DEG  
 Test System:EVERFINE GO-R5000\_V2 SYSTEM V2.0.351  
 Humidity:42%  
 Test Distance:2.532m [K=1.0000]  
 Remarks:

**ISOCANDELA DIAGRAM**

Test:U:120.1V I:0.1237A P:14.54W PF:0.9791 Lamp Flux:834.257x1 lm		
NAME: LED luminaires	TYPE:N/A	WEIGHT:N/A
SPEC.:ASD-LVF24M-3D15CC-BK 4000K	DIM.: N/A	SERIAL No.:N/A
MFR.: ASD Lighting corp	SUR.:N/A	Shielding Angle:N/A



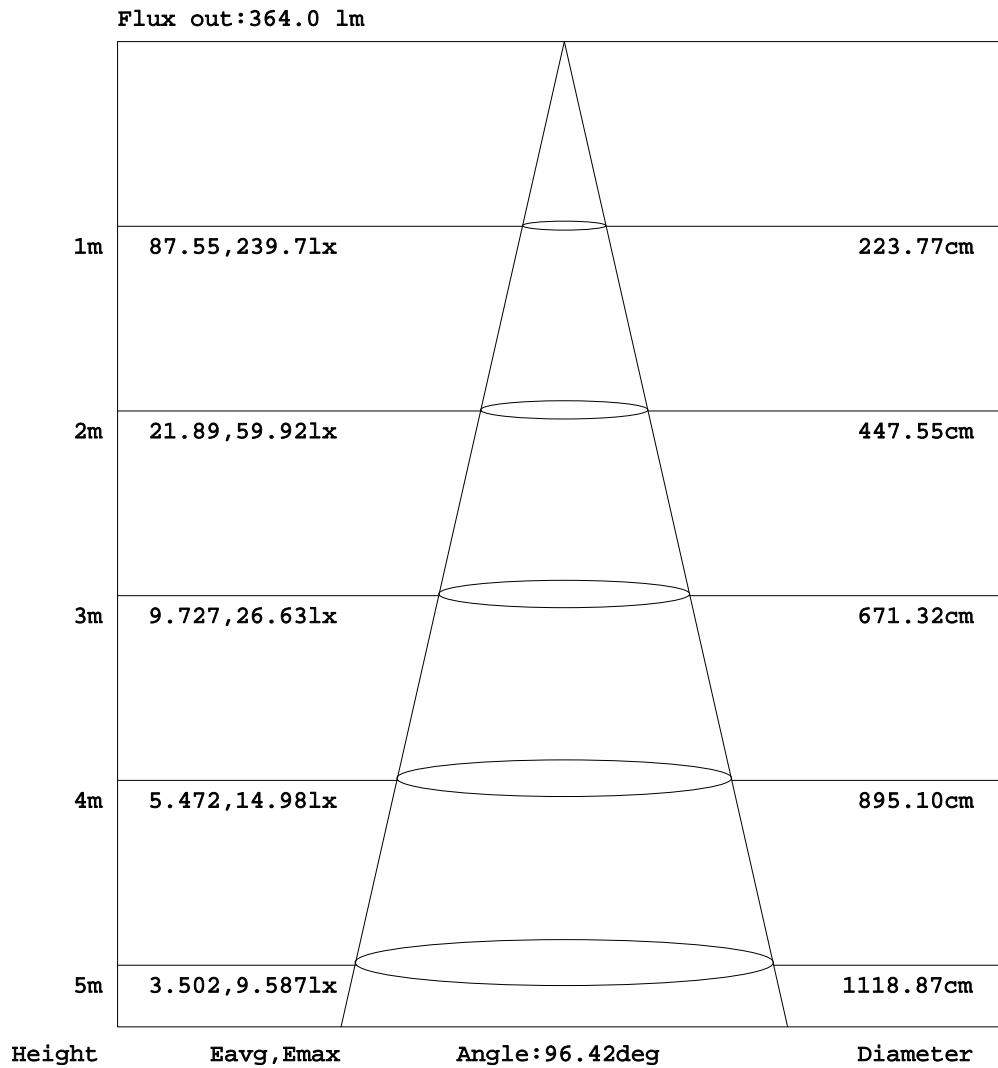
C Range: 0 - 360DEG  
 C Interval: 22.5DEG  
 Test Speed: HIGH  
 Temperature:25.1DEG  
 Operators:Evan  
 Test Date:2022-11-29

γ Range: 0 - 180DEG  
 γ Interval: 1.0DEG  
 Test System:EVERFINE GO-R5000\_V2 SYSTEM V2.0.351  
 Humidity:42%  
 Test Distance:2.532m [K=1.0000]  
 Remarks:



AAI Figure

Test:U:120.1V I:0.1237A P:14.54W PF:0.9791 Lamp Flux:834.257x1 lm		
NAME: LED luminaires	TYPE:N/A	WEIGHT:N/A
SPEC.:ASD-LVF24M-3D15CC-BK 4000K	DIM.: N/A	SERIAL No.:N/A
MFR.:ASD Lighting corp	SUR.:N/A	Shielding Angle:N/A



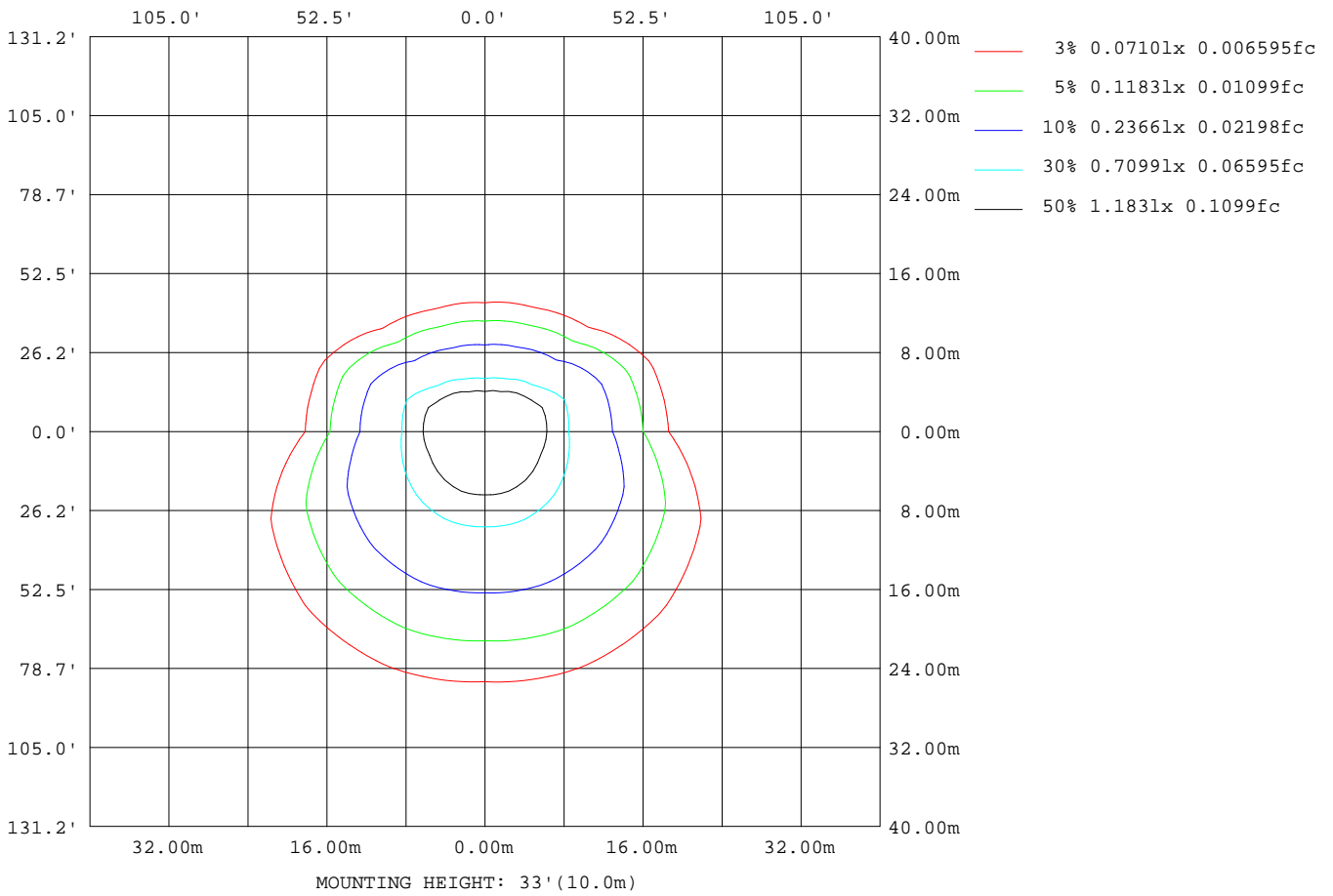
Note:The Curves indicate the illuminated area and the average illumination when the luminaire is at different distance.

C Range: 0 - 360DEG  
 C Interval: 22.5DEG  
 Test Speed: HIGH  
 Temperature:25.1DEG  
 Operators:Evan  
 Test Date:2022-11-29

γ Range: 0 - 180DEG  
 γ Interval: 1.0DEG  
 Test System:EVERFINE GO-R5000\_V2 SYSTEM V2.0.351  
 Humidity:42%  
 Test Distance:2.532m [K=1.0000]  
 Remarks:

**ISOLUX DIAGRAM**

Test:U:120.1V I:0.1237A P:14.54W PF:0.9791 Lamp Flux:834.257x1 lm		
NAME: LED luminaires	TYPE:N/A	WEIGHT:N/A
SPEC.:ASD-LVF24M-3D15CC-BK 4000K	DIM.: N/A	SERIAL No.:N/A
MFR.: ASD Lighting corp	SUR.:N/A	Shielding Angle:N/A



C Range: 0 - 360DEG  
 C Interval: 22.5DEG  
 Test Speed: HIGH  
 Temperature:25.1DEG  
 Operators:Evan  
 Test Date:2022-11-29

γ Range: 0 - 180DEG  
 γ Interval: 1.0DEG  
 Test System:EVERFINE GO-R5000\_V2 SYSTEM V2.0.351  
 Humidity:42%  
 Test Distance:2.532m [K=1.0000]  
 Remarks:

**LED Avg.L Report**

Test:U:120.1V I:0.1237A P:14.54W PF:0.9791 Lamp Flux:834.257x1 lm		
NAME: LED luminaires	TYPE:N/A	WEIGHT:N/A
SPEC.:ASD-LVF24M-3D15CC-BK 4000K	DIM.: N/A	SERIAL No.:N/A
MFR.:ASD Lighting corp	SUR.:N/A	Shielding Angle:N/A

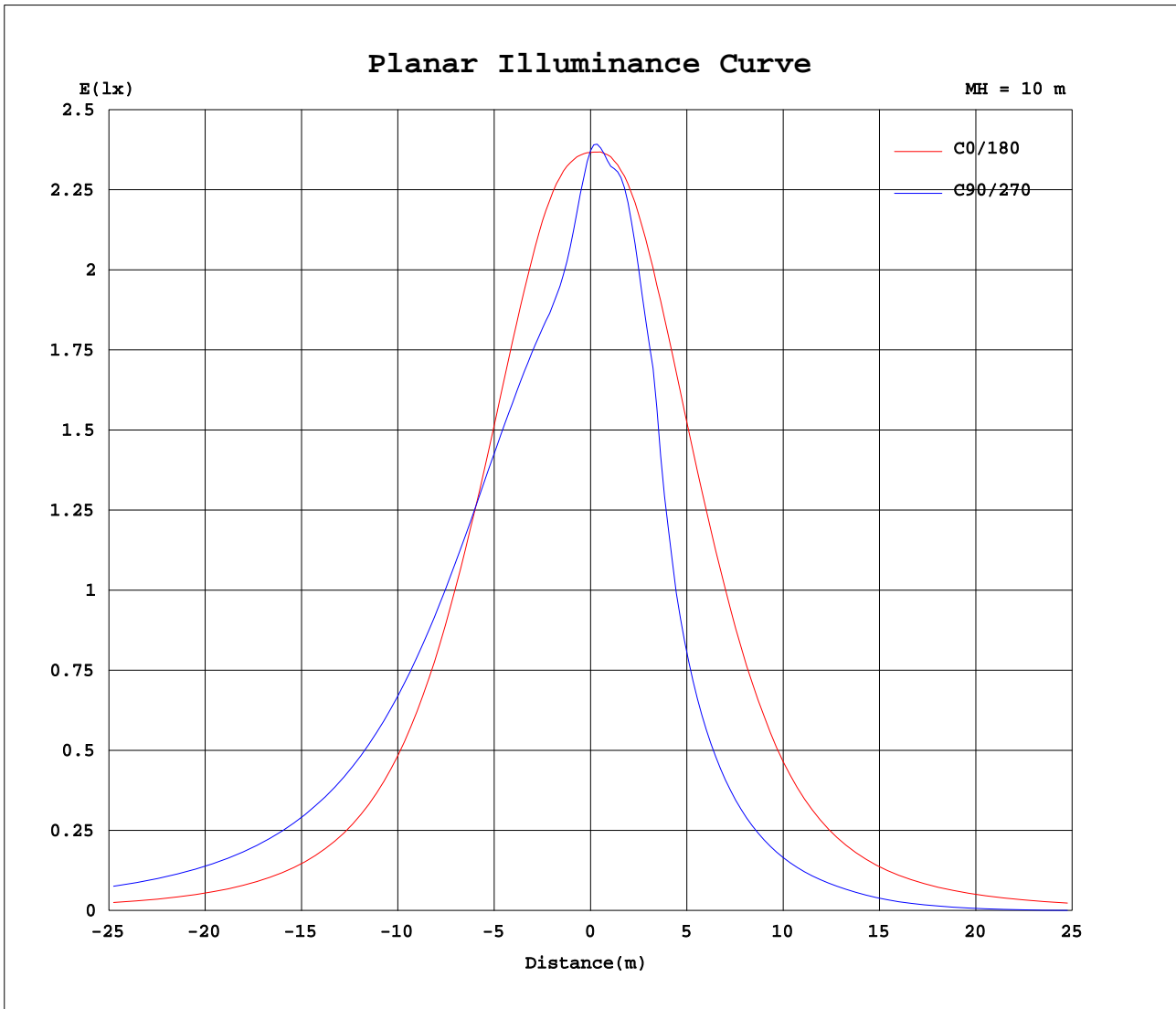
AvgL	cd/m2
L_0~180(65)av	1549
L_0~180(75)av	1455
L_0~180(85)av	2469
L_90~270(65)av	2229
L_90~270(75)av	2983
L_90~270(85)av	7544
L_45(65)av	2451
L_45(75)av	3101
L_45(85)av	7720

Standard: GB/T 29293-2012

C Range: 0 - 360DEG  
 C Interval: 22.5DEG  
 Test Speed: HIGH  
 Temperature:25.1DEG  
 Operators:Evan  
 Test Date:2022-11-29

γ Range: 0 - 180DEG  
 γ Interval: 1.0DEG  
 Test System:EVERFINE GO-R5000\_V2 SYSTEM V2.0.351  
 Humidity:42%  
 Test Distance:2.532m [K=1.0000]  
 Remarks:

Planar Illuminance Curve



C Range: 0 - 360DEG  
 C Interval: 22.5DEG  
 Test Speed: HIGH  
 Temperature: 25.1DEG  
 Operators: Evan  
 Test Date: 2022-11-29

γ Range: 0 - 180DEG  
 γ Interval: 1.0DEG  
 Test System: EVERFINE GO-R5000\_V2 SYSTEM V2.0.351  
 Humidity: 42%  
 Test Distance: 2.532m [K=1.0000]  
 Remarks:

LUMINOUS DISTRIBUTION INTENSITY DATA

Test:U:120.1V I:0.1237A P:14.54W PF:0.9791 Lamp Flux:834.257x1 lm		
NAME: LED luminaires	TYPE:N/A	WEIGHT:N/A
SPEC.:ASD-LVF24M-3D15CC-BK 4000K	DIM.: N/A	SERIAL No.:N/A
MFR.: ASD Lighting corp	SUR.:N/A	Shielding Angle:N/A

Table--1

UNIT: cd

C( DEG) γ (DEG)	0	22.5	45	67.5	90	112.5	135	157.5	180	202.5	225	247.5	270	292.5	315	337.5			
0	237	237	237	237	237	237	237	237	237	237	237	237	237	237	237	237			
5	238	230	222	217	215	217	223	232	239	241	240	238	237	237	239	240			
10	238	222	209	203	201	203	210	225	240	241	240	239	236	237	237	239			
15	235	214	204	200	199	201	204	216	238	237	237	222	213	221	235	233			
20	228	207	203	201	199	201	202	208	230	231	218	195	171	195	219	228			
25	216	200	201	201	199	201	200	200	218	220	197	139	123	140	199	218			
30	202	193	199	201	199	201	197	192	202	202	149	105	94.1	107	152	203			
35	184	185	196	200	198	200	194	183	183	183	114	82.0	74.2	83.4	117	186			
40	161	176	192	198	194	197	190	174	159	165	88.1	64.7	59.0	66.0	90.7	169			
45	137	167	187	193	189	192	184	164	132	132	69.0	51.0	46.8	52.3	71.0	138			
50	113	157	180	187	182	186	178	154	107	105	54.1	39.7	36.5	40.9	55.6	110			
55	91.4	147	172	179	173	178	170	144	85.5	81.6	41.9	29.4	25.7	30.6	43.1	85.9			
60	72.5	136	163	169	163	168	161	133	67.4	63.9	31.4	17.4	14.5	18.6	32.4	66.9			
65	56.4	125	154	159	151	158	151	122	52.5	50.0	19.2	7.39	5.37	8.44	20.5	52.1			
70	43.4	114	143	147	140	146	141	111	39.8	38.6	8.52	0.16	0.11	0.59	9.41	40.1			
75	32.3	103	133	136	128	135	130	99.9	30.3	26.7	2.68	0.12	0.13	0.13	1.60	28.6			
80	24.0	92.3	122	125	117	124	119	89.1	23.5	17.1	2.27	0.13	0.14	0.14	1.23	17.5			
85	17.9	81.6	111	116	109	116	110	78.8	17.9	12.8	1.67	0.16	0.17	0.17	0.89	10.9			
90	13.2	73.6	104	110	103	109	103	71.9	14.7	7.54	1.27	0.18	0.19	0.19	0.77	7.17			
95	12.6	67.0	97.3	103	97.4	103	96.3	65.5	13.8	8.19	1.19	0.20	0.21	0.21	0.79	7.67			
100	11.8	60.3	90.6	97.2	92.1	96.8	89.7	59.1	12.5	7.84	1.07	0.21	0.21	0.21	0.74	7.29			
105	10.9	54.2	84.1	91.3	87.1	90.9	83.2	53.1	11.3	7.65	0.90	0.18	0.19	0.19	0.65	7.26			
110	10.1	48.1	77.5	85.4	82.0	85.1	76.8	47.3	10.3	8.47	0.69	0.16	0.17	0.17	0.55	7.96			
115	9.14	42.3	70.9	79.4	76.8	79.0	70.3	41.6	9.27	8.36	0.56	0.15	0.15	0.15	0.42	7.82			
120	8.60	36.7	64.2	73.0	71.2	72.6	63.5	36.4	8.84	7.50	0.40	0.14	0.14	0.14	0.28	7.03			
125	8.66	31.5	56.9	66.3	65.1	65.9	56.5	31.4	9.22	7.07	0.18	0.14	0.14	0.14	0.19	6.52			
130	9.07	26.4	49.9	58.8	58.3	58.4	49.4	26.3	9.47	6.89	0.13	0.14	0.14	0.14	0.14	6.43			
135	9.28	21.2	42.7	51.3	51.3	50.8	42.3	21.2	9.59	6.72	0.14	0.13	0.14	0.14	0.14	6.34			
140	9.36	16.4	35.4	43.4	43.9	43.0	35.0	16.5	9.52	6.56	0.27	0.14	0.14	0.14	0.19	5.98			
145	9.28	12.3	28.1	35.2	36.1	34.9	27.7	12.4	9.31	6.66	0.58	0.14	0.14	0.15	0.31	5.23			
150	9.09	9.12	20.8	27.0	28.0	26.7	20.5	9.19	9.00	7.06	0.99	0.22	0.16	0.17	0.61	4.09			
155	8.65	7.32	13.7	18.8	20.0	18.6	13.5	7.00	8.24	7.35	1.55	0.39	0.19	0.20	0.47	2.45			
160	6.77	5.40	7.19	10.9	12.1	10.8	7.01	4.33	6.14	6.22	2.65	0.80	0.22	0.22	0.62	1.56			
165	4.58	3.78	2.71	3.88	4.77	3.80	2.37	3.50	3.60	3.89	2.89	1.03	0.31	0.25	0.62	1.08			
170	1.49	2.19	1.47	0.83	0.52	0.71	1.27	1.94	1.06	1.07	0.82	0.40	0.26	0.27	0.30	0.57			
175	0.53	0.51	0.72	0.56	0.44	0.47	0.44	0.45	0.35	0.36	0.32	0.30	0.31	0.31	0.32	0.32			
180	0.33	0.35	0.36	0.35	0.37	0.36	0.37	0.37	0.35	0.34	0.35	0.35	0.36	0.36	0.37	0.37			

C Range: 0 - 360DEG  
 C Interval: 22.5DEG  
 Test Speed: HIGH  
 Temperature:25.1DEG  
 Operators:Evan  
 Test Date:2022-11-29

γ Range: 0 - 180DEG  
 γ Interval: 1.0DEG  
 Test System:EVERFINE GO-R5000\_V2 SYSTEM V2.0.351  
 Humidity:42%  
 Test Distance:2.532m [K=1.0000]  
 Remarks: